

THE PARISH PUMP

MAY 2026
ISSUE 530



Congratulations to the Easter basket competition winners, with prizes presented by the Easter Bunny – and to all our little egg hunters who followed the trail and found the golden eggs!

DISCLAIMER

The articles appearing in this magazine do not necessarily represent the views of the Parish Council nor of the Parish Pump Editor.

Parish Councillors

Marlene Carr	01579 362 919	Marlene.Carr@st-ive-parishcouncil.gov.uk
Tony Hodson	079 7353 6964	Tony.Hodson@st-ive-parishcouncil.gov.uk
Martin Corney	01579 382 450	Martin.Corney@st-ive-parishcouncil.gov.uk
Alan Moss	01579 362 064	Alan.Moss@st-ive-parishcouncil.gov.uk
Rosemary Farley	01579 384 810	Rosemary.Farley@st-ive-parishcouncil.gov.uk
Nigel Libby	079 6889 1814	Nigel.Libby@st-ive-parishcouncil.gov.uk
Freddie Southcott	01579 364 083	Freddie.Southcott@st-ive-parishcouncil.gov.uk
Charlotte Whitehead	079 4689 5190	Charlotte.Whitehead@st-ive-parishcouncil.gov.uk
Vickie Bishop	07889 713119	Vickie.Bishop@st-ive-parishcouncil.gov.uk
James Bruce	074 1119 2645	James.Bruce@st-ive-parishcouncil.gov.uk
Steve Willis (chairman)	Not disclosed	Steve.Willis@st-ive-parishcouncil.gov.uk
Paul Mann (vice chair)	Not disclosed	Paul.Mann@st-ive-parishcouncil.gov.uk
Patricia Steer	Not disclosed	Patricia.Steer@st-ive-parishcouncil.gov.uk

Your Cornwall Councillor is Jim Gale - 07974786066; cllr.jim.gale@cornwall.gov.uk

Meetings of St Ive Parish Council

Meetings are usually held on the second Monday of every month, except August and December when no meeting is held. Please see the website or notice board for meeting dates, agendas, and minutes.

<https://st-ive-parishcouncil.gov.uk/minutes-agendas/>



Police Community Neighbourhood Office

Your Community Support Officer is PCSO Steve Edser 30173

Email: **NPS-Liskeard@devonandcornwall.police.uk**

In an emergency call **999**

To report a crime call **101** or go to **www.devon-cornwall.police.uk**

Contact Details for St Ive Parish Council and Millennium House

Address for correspondence:
Millennium House, Century Square, Pensilva PL14 5NF

General Parish matters should be raised initially with the Parish Clerk,
Jenny Hoskin, who will present them to the Parish Council
01579 363096, email: clerk@st-ive-parishcouncil.gov.uk

For Millennium House enquiries and reservations, please call
01579 363096

Parish Pump Submissions

Via email only to stiveparishpump@gmail.com

The deadline for submissions is the 18th of the month. Please email your text submissions directly in the email body, and attach any images. Full, half, or quarter page poster designs can be sent as JPG, PNG, or PDF files.

Advertising Costs

Please note that new advertisers must pay prior to publication. Purchasing an annual block gives you two months free.

Quarter page: £10 per month, or £100 for 12 months

Half page: £20 per month, or £200 for 12 months

Full page: £33 per month, or £330 for 12 months

(All prices are inclusive of VAT)

Report a Pothole!

Just google "cornwall council report pothole"; the URL is too long to print here. Or scan the QR code on the right.



Letter from The Editor

Since the world is so messed up right now and I really don't want to think about it, I'm going completely off topic this month with something I built, in the loosest possible sense, because it made me happy, though it might also serve as a warning for the future.

I'm a big LEGO fan. Some of you may even have seen me on Cornwall Live at some point: the crazy guy with a shed in the garden just for LEGO. I love buying old bargain bulk boxes and figuring out what sets were mixed in there. But finding the right bits to rebuild those sets can be tedious, especially when there are 5kg of bricks to wade through. So one Saturday evening, I decided to make a web-based tool to help me find the pieces I need: something where I could enter a set number, see all the parts, and use a dead-simple tick-box interface to check them off, ideally with a satisfying sound. It's not a radical idea. It's basically like photocopying the last page of the manual, but interactive, with bigger pictures so the parts are easier to spot. Either way, no such tool existed.

So... I asked my ChatGPT agent to make it for me. Within fifteen minutes, it had built a working prototype. Less than an hour later, I'd bought a domain name and uploaded the first version. It was rough, and it didn't work for larger sets yet, but the proof of concept was there, and it was already useful. By Sunday morning, I'd added new features, fixed bugs, and made sure it could scale for massive sets. Then I added a way to save your progress without ever needing to log in, so no sensitive user data is stored. And it all just... worked. Maybe it'll help you too, so give it a try if you have a LEGO fan in the house. It's completely free, needs no login, and collects no data. You'll find it at:



BrickBacklog.com

Despite two decades of experience as a web developer and programmer, it would have taken me several months to build that on my own through trial and error, and if I'm honest, I probably would have given up halfway through as soon as the next random idea took hold. A year ago, AI struggled with coding complete projects. It was like an apprentice who needed constant babysitting: steering in the right direction, endless nudging, and circular debugging when things broke. I was still the senior coder, at least. Now it feels more like I've become a project manager, directing my crack team of AI coders and letting them work out the detail. They make a plan, implement the features, and come back with a finished product, ready for the next round. That's the reality for many entry-level computing jobs right now: the AI is simply faster, better, and infinitely cheaper. In a year's time? I may not be needed at all. The agent will be scouring the web for minor frustrations it can solve autonomously. If you have children or grandchildren thinking about a career in programming, web development, or writing, it may be worth pointing them in another direction. Physical skills will be in demand for a while yet.

Oh, hey ChatGPT, could you fix the world, please?

James

Chairman's Column

As I write this in mid-April, we are "enjoying" typically seasonal weather – one minute sunny, the next it's "Grab your umbrella!!!" Still, it's a far cry from the atrocious wet and windy weather we endured during January and February. By the time you read this, hopefully the weather will have improved even further.

There are a couple of notable dates coming up in May – the Parish Council AGM, for one. Incredibly it's now two years since I took over the reins and began haranguing you all with these monthly ramblings – so who knows – are you reading my very last report or will my fellow councillors want to put up with another twelve months of yours truly? Only time will tell.

These last twelve months have certainly been eventful for the Parish what with the launch of the Neighbourhood Development Plan out for consultation and the lively meetings when we hosted the residents of St Ive Keason and the appalling situation with their sewerage system. Then there were the meetings with concerned residents over the proposed development on the St Ive Road. Never a dull moment on the Parish Council!!

In tandem with the AGM, we'll be hosting our annual Parish Open Meeting which, this year will be entirely different and hopefully far more interactive for residents. It is being held on Saturday 30th May between 10.30am and 12.30pm in the function room at Millennium House. We are hoping to invite a good number of local groups to set up shop and for residents to come and meet with them to find out what they get up to! The Parish Council will be in attendance to answer any questions, to discuss any issues or to simply have a chat. Refreshments (sadly not the cheese and wine, as suggested by our esteemed Editor!!) will be provided so there's no excuse for you not to come along and find out more about your village and what goes on there.

Talking of Millennium House we hope to be able to give the building a well-deserved facelift, to re-coat the cladding and paint the bottom half (the blockwork) in a toning colour. This should really cheer it up and make it an attractive building to look at for many years to come. I just hope you'll like our choice of colours!!

That's about it for this month but please remember to pop along on the 30th – we look forward to meeting everyone!!

Steve

What's on at Millennium House?

MAY SPECIAL EVENTS

SATURDAY 2nd: Tess Tea party 2pm - 4pm. Admission £3

SUNDAY 3rd: Market Day 11am - 2pm. Featuring local crafts and tasty treats.

WEDNESDAY 13th: Pensilva W.I. Monthly Meeting from 7pm.

FRIDAY 15th: Pensilva Film Club: showing The Choral - Doors 7pm / Film starts 7.30pm.

WEDNESDAY 20th: Bingo with Colleen & Ruth. Eyes down at 7:30pm. (Every 3rd Wednesday).

WEDNESDAY 27th: M2 Meal Night - Turkish theme (Chicken Shish and Lamb Adana Kebabs. Vegetarian option is Falafel)
- Doors 5:30pm / Served 6pm. £20pp.
Please book by the 22nd.

THE WEEKLY TIMETABLE

☆ = Term time only activity. Check dates!

MONDAY

- 🕒 10.30am: Mims Gentle Exercise
- 🕒 5:30pm: Yoga (with Laura Louise Yoga)
- 🕒 7.30pm: Pensilva Badminton

TUESDAY

- 🕒 10am: Singing for Wellbeing (with Clare)
- 🕒 7.30pm: Pensilva Badminton
- 🕒 7.30pm: Westernairs

WEDNESDAY

-
- 🕒 9.40am: Kixx (Ages 2-4 with Coach James)
 - 🕒 10.15am: Sing & Sign (with Natalie) ☆

THURSDAY

-
- 🕒 9.15am: Baby & Toddler (with Tammy) - until 11:15am ☆
 - 🕒 4.00pm: Ladies Walking Netball
 - 🕒 7.00pm: Country Dancing (Every 2nd and 4th Thursday only)
 - 🕒 7.30pm: Aikido

FRIDAY

-
- 🕒 10am: Penmill Art Group
 - 🕒 Varies: Table Tennis (Most Fridays - please check the Pump)
 - 🕒 5.30pm: Slimming World (with Hayley)

SATURDAY

-
- 🕒 8am/9.30am: Slimming World (with Hayley)

SUNDAY

-
- 🕒 9am: Kixx (until 11:00am)

THE MEL BAR OPENING HOURS:

Tuesdays to Saturdays from 5pm; Sundays from 12pm.

COFFEE SHOP OPENING HOURS:

Mondays 10-3pm (Post Office not open); Tuesdays, Wednesday, Friday 9-1pm (with the Post Office open until 11:30am)

WANT YOUR EVENT AT MILLENNIUM HOUSE LISTED? Make sure you email

Hui

Pensilva WI Meeting Report

This month, memberships were due and everyone was busy renewing for the busy year ahead, as well as enrolling new members. We also welcomed Jane Edwards – a trustee for CFWI – to the meeting as she is visiting many WIs.

Paul Ford, one of the 318 volunteers (ground crew) with Cornwall Air Ambulance, gave us a fascinating insight into all aspects of this amazing local resource. Being the first in the UK, it will celebrate its 40th birthday next year. From just one leased craft in 1987, there are now two fully owned helicopters housed at the state-of-the-art base at Newquay airport. Around 1,000 missions each year are taken on, providing critical care to the most seriously injured or ill people in Cornwall. Reaching speeds of up to 160 mph and anywhere in Cornwall/Isles of Scilly within 20 minutes, there are no barriers to where it can land – “bear paws” stop

it sinking in the sand or bogs, night vision cameras can be worn by the crew, and it can even float! They work closely with other services we are lucky to have, like blood bikes, coastguards, RNLi, and NHS, ensuring that from the moment the 999 call is received in Exeter, the patient receives help as quickly as possible. The helicopter can fly patients easily to Bristol, Wales or

Southampton for specialist care as well as to local hospitals. Film clips were shown of grateful patients who had survived thanks to this service. With 6 pilots, 12 highly trained paramedics (who are also technical crew), 14 doctors on call, and 57 charity staff, this is an amazing resource – fully funded by donations to the charity. This can include visiting one of their shops, leaving a gift in a will, playing their lottery, donating, or hosting an event. There were many questions including some from Ian Varndell who had been observing as a trainee speaker (we wish him well!) Many Pensilva WI members knew of someone who had been

helped by the Air Ambulance and are proud that we have this in Cornwall.

Birthday posies for those with an April birthday were given to Trish Thomas, Sue Turpin, Sue Hill, Hilary Clatworthy, and Pauline Caffery. **Competition winners:** *Flower of the month:* 1st Ann Houlston; 2nd Jill Pascoe; 3rd Irene Elliott. *A Helicopter in any medium:* 1st Mary Yates; 2nd Jenny Rendle; 3rd Rosie Drake.

Next meeting: Wednesday 13th May, 7.15pm:

Pensilva WI AGM and speaker Helen Searle (former WI member) on setting up a School of Nursing in St. Helena.

Contact us with any enquiries at pensilva@cornwallwi.org.uk

Update on Aid for Ukraine

What a busy month it has been for us. We have been holding car boot sales every week at the Truro Cattle Market and One at Lanreath Village Hall in Looe and I am pleased to tell you that we have collected another £1,000. So, our running total to date for this year is now £3,000. A massive thank you for your car boot donations. Without your support we simply could not make this happen.



So moved by the documentary, I realised that I had to do something. And now here we all are, playing our part in something good that is spreading light into a country that is suffering and needs our help. I met a lady at the last car boot sale in Truro who is a friend of Chris Parry's mum Christine. She told me that Christine is currently out in Ukraine delivering aid,

continuing her sons' legacy and supporting the country, which she said now would be in their hearts forever. What an inspirational family.

This means that our team will be able to take this vehicle out to Ukraine on Tuesday 5th of May, packed with medical aid, where it will be driven to the frontline and used as an emergency transportation vehicle, to evacuate those in need to hospitals and areas of safety.



In the end we all share the same planet and in the end all that is real in the world is the love that we share and the kindness that we offer to each other. Everything that is material doesn't matter in the end.

I have been volunteering now with Nightingales UK for approximately two years and I am reminded about how I first came to volunteer with the team. It all started when I watched an award-winning documentary about Chris Parry on BBC 2 called Hell-Jumper (2024). He was a 28-year-old Truro man who along with a group of volunteers helped to evacuate civilians on the front line in Ukraine and saved hundreds of people before being killed alongside another British volunteer Andrew Bagshaw in January 2023. It was extremely moving.

Plymouth Ukraine Medical Aid (PUMA), a non-profit organisation that also delivers medical supplies and clothing have asked if we can collect WHITE plastic milk bottle tops which are used to repair drones. They must be WHITE NOT GREEN. Thank you for your donations.

As a group we are promoting the message that we need high spec medical aid and donations, ensuring that we can buy the very specific medical equipment needed to save lives on the front line. Therefore, if you would like to make a cash donation, please go to

gofundme.com/f/Nightingales-UK

If you would like to donate a long wheel base

4 x 4 vehicle, please email

nightingalesuk@gmail.com

The need for unused and in date medication is as great as ever. If you have any medication that you no longer need or use, please consider donating it to Ukraine. All identification labels are removed and medication is checked by medical staff, prior to transportation. We are also appealing for Paracetamol and Ibuprofen, as well as men's toiletries such as wet wipes, shower gel, deodorant etc.

Please continue to support us where you can.

There is a pink dustbin by the wooden box on the drive, outside my house where you can place your unwanted/donated items. For those of you who don't know where I live, our house is Rivendale PL14 5PG, located next to the Pensilva Medical Centre. If you would like me to collect any items, please contact me on Mobile 07808663749. Once again, thank you for all your kind donations and support.

My wish for the world and for all of you, is that everyone may find peace in their hearts and that humanity can learn to live together in harmony. As the Beatles sang, "*All you need is love*", John Lennon "*Imagined*", a better world for us all and Micheal Jackson sang about "*healing the world and making it a better place for you and me and the entire human race*". All it takes is one step. God bless.

Janey

Nightingales UK are currently asking for donations of the following aid supplies:

Over-the-counter medicines

- Paracetamol
- Ibuprofen
- Cold and cough Medicine
- Antihistamines
- Immodium

Prescribed in date medicines

- Antibiotics
- Painkillers, (no Codeine or controlled drugs)

- Blood Pressure and heart pills
- Asthma and COPD inhalers
- Prednisolone

Nursing Equipment

- Dressings/bandages
- Tape
- Dressing packs
- Antiseptic wipes and fluid
- Scissors
- Sutures
- Steristrips
- Eye wash and dressings

Surgical Equipment

- Urinary Catheters/bags etc
- Colostomy stoma care and bags etc
- Splints, slings, orthopaedic kits, scalpels and basic surgical kits.

Medical Equipment

- Stethoscopes
- Blood Pressure Machines
- Blood Sugar Monitoring
- Peak flow meters etc
- Pulse oximeters

Humanitarian Aid

- Children's nappies, formula milk, bottles
- Adult continence pads
- Wet wipes, toothpaste, toothbrushes, deodorant, shower gel, mens toiletries.
- Nutritional drinks
- Torches, batteries

Please do not send

- Clothes, blankets, food, crutches, disability walkers and wheelchairs.

Thank you.

SIXTEEN+ YEARS OF WILDLIFE WATCHING IN THE PARISH OF ST. IVE

Since moving to the Parish at the end of 2009, I have been photographing and recording the wildlife which I see at my home on the edge of Pensilva on a daily basis. This month I am looking at a bird which is frequently seen and heard above our homes, but never yet seen landing on our patch, the...

...HERRING GULL



Gulls are a frequent sight and a particularly noisy inhabitant of our skies, often hassling our buzzards. However, it is not often easy to establish which gull species it is, let alone photograph it. I have once seen one swooping low enough to see its back and so identify it. Herring gulls are also the most likely gull to travel inland (though there may well be others in the mix as well). The photos I have used here were taken on a recent stay in the Scillies.



Herring Gull's natural nesting sites are in colonies, on cliffs and sometimes dunes, but they have also adapted to using buildings. We have not had a nest here, but I would not be surprised if some of you have done. This can lead to problems as Herring Gulls are fiercely protective of their young and may attack anyone who gets too close. (even if it is *your* house they are on!) However, permission to remove nests is rare and it is otherwise illegal to do so. I am told that hard hats and umbrellas are the best defence!

A large nest of grasses and seaweed is built on a ledge and a single clutch of 2-4 eggs is laid from February onwards with eggs laid on alternate days, so spreading out the

hatching period. If any of these eggs are lost, they will lay more to replace them. Both parents incubate the eggs for the next 25-27 days. The chicks have a grey and blotchy brown covering of down for camouflage. They are fed by both parents and will tap the red spot on their parent's bill to stimulate them to regurgitate fish for them. After 42 days, the young can fly. Their plumage remains a speckled brown until they are a year old, but the transition to full adult plumage takes several years. Adults have sleek pale grey backs with white edges on the wings. Their wing tips are black with white markings and their undersides white, with pink legs. Their yellow beaks have the afore mentioned red spot.



You may well be surprised to hear that they are on the red list of endangered species due to an ongoing steep population decline. They are clever, resourceful and adaptable in hunting down food, but declines in stocks of their natural diet from the sea over many years, has led them to turn to our homes, bins and waste tips for food. This brings them into conflict with us. Sadly, a study in S Wales showed that birds feeding their young from food scavenged from fish docks were more successful in succeeding to raise their young than those relying on fishing from the sea. Through the winter, they are now found on farmland, wetlands, reservoirs, playing fields and landfill sites as well as on the coast. During the breeding season, they are more likely to be near the coast, but are increasingly nesting well inland.



Herring Gulls are still the commonest of our gull species (contrarily, this includes the Common Gull!). All of them have to deal with the decline in natural food sources which we as humans are responsible for. The Herring Gull is intelligent, feisty and is fighting for its survival. This doesn't always endear them to us, but don't we also share similar traits? We may not be best pleased when they steal our ice-cream or chips, but you have to admire their tenacity. Remember they are turning to our habitat because we have damaged theirs, so (alongside your anger!) admire them even when they are pinching your food or attacking you to protect their young!

HAPPY WILDIFE WATCHING!
Hilary

PENSI LVA

Free
Entry

Featuring local sellers,
craft stalls, indoor car boot,
baked treats, and live plants.
Refreshments available and bar!

Sellers
£5 per
table



←← MILLENNIUM HOUSE PRESENTS →→

PENSILVA MARKET DAY

FIRST SUNDAY OF THE MONTH

SELLERS FROM 10am; BUYERS 11am-2pm

Call Sandy on 01579363096 or email
millenniumhouse@btconnect.com
to book your table or other enquiries

Fancy something spicy for lunch instead of
the usual pasty? Hui will be selling Kimchee
Noodles (and jars of homemade Kimchee and
chilli oil if you want more!)

PRINCESS ROAD, PL14 5NE



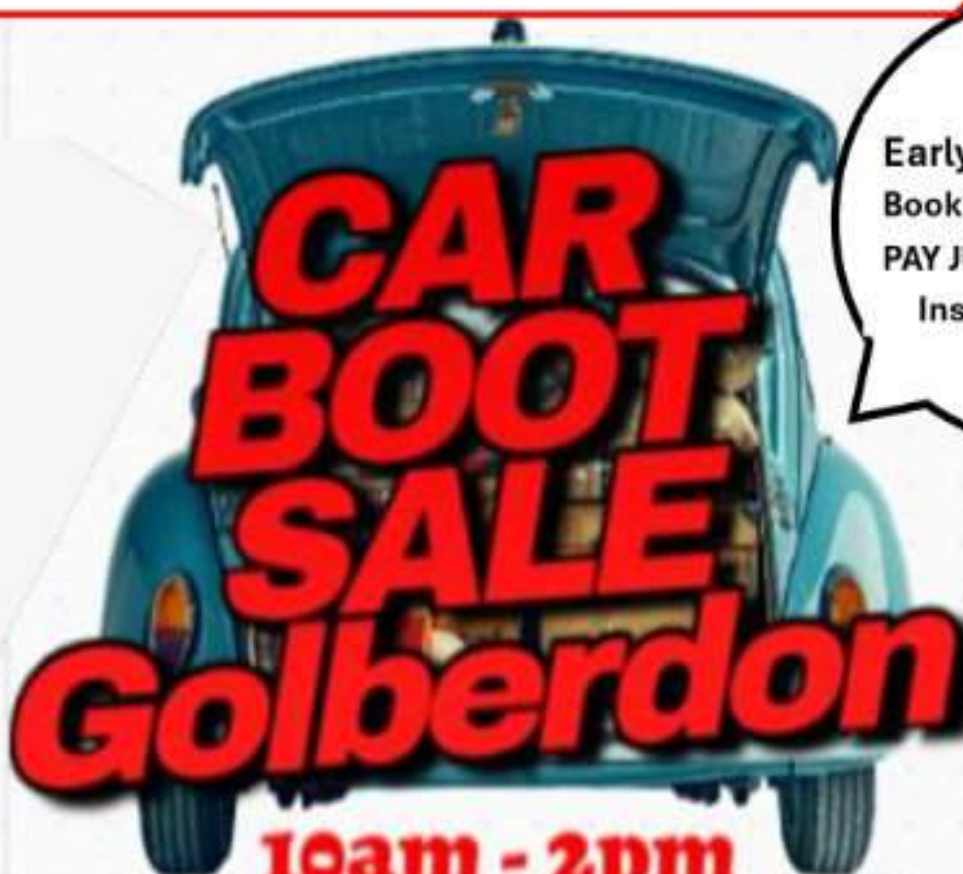
Golberdon CAR BOOT SALE !

Book a space to sell your goods or donate them.

If you have items to donate, The hall committee can sell your treasures to raise funds for our parish hall.

Quality items can be dropped off to Green Meadows from May 26th or by contacting Ali 07305 044049

Most things considered, must be in very good condition.



Golberdon

10am - 2pm

Sat. June 6th

Book your space by email to
CornwallRecycling@outlook.com

Inside or outside spaces. £10 after May 26th

Early Bird Special
Book before May 26th
PAY JUST £5 a SPACE
Inside or outside
the hall.



South Hill Parish Hall in Golberdon PL177ND

Open Rain or Shine

PENSILVA CARNIVAL DAY

AGE OF STEAM



SATURDAY 1ST AUGUST 2026

TIME - MIDDAY ONWARDS

 **COSTUME CONTEST •**

 **DRESS TO IMPRESS •**

 **VINTAGE GAMES •**

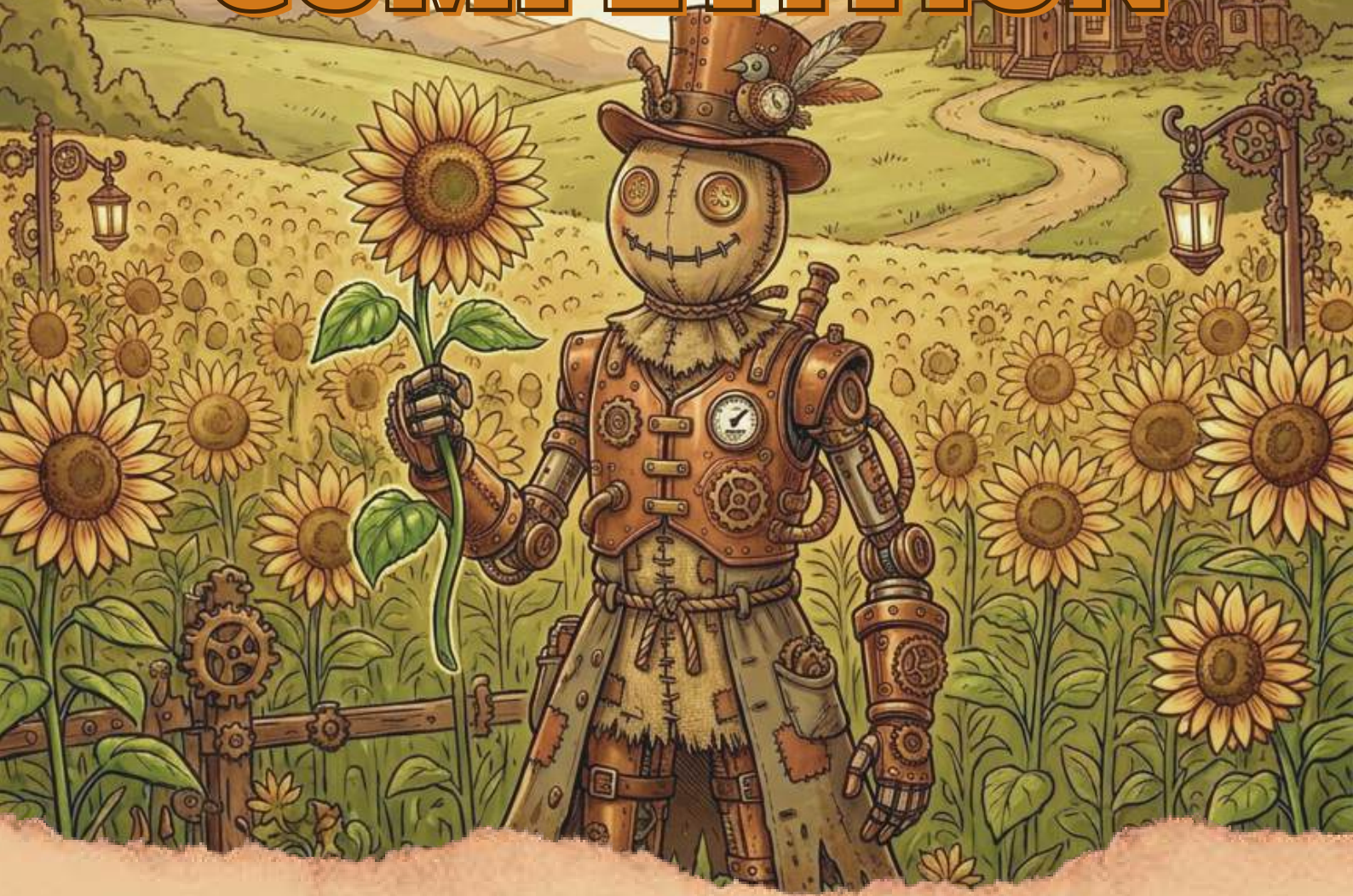
 **STEAM ENGINE DISPLAYS •**

 **HOG ROAST • DOG SHOW •** 

 **FOOD & DRINK**

**DON'T MISS CARNIVAL WEEK
LEADING UP TO THE BIG DAY!**

SCARECROW AND SUNFLOWER COMPETITION



Winners announced on Carnival Day, August 1st.

**Entry forms in the Parish Pump, or Collect from
Millennium House.**

Prizes for:

- ⚙️ Best Steampunk Scarecrow.**
- ⚙️ Tallest Sunflower.**
- ⚙️ Biggest Sunflower.**

**Entries close Sunday
26th July**

Judging: TBC

HIGH WOOD

Summer Fair

Sunday 14th June 2026
11AM TO 4PM

11.00 – 13.30	Willow Weaving
11:30 – 12:30	Guided History Walk
13:00 – 13:30	Qigong Sample Lesson
13:30 – 15:00	'Foraging in Nature' Walk
14:00 – 16:00	Willow Weaving

Why You Should Join Us

- ✓ Meat and Vegan Food
- ✓ Owls and Polecat
- ✓ Stalls and Eco-Crafts
- ✓ Face Painting, Games and Scavenger Hunts



Find Us Here

What3Words:
dignify.udder.capillary

East Gate entrance:
product.ditching.stick

Looe Mills entrance:
louder.reactions.unites

Very limited parking. Walk, bus or cycle if you are able.

Walk North down Venslooe Hill and follow signage

Pensilva Community Association and C-FyIm Present

PENSILVA FILM CLUB



FRIDAY, MAY 15th

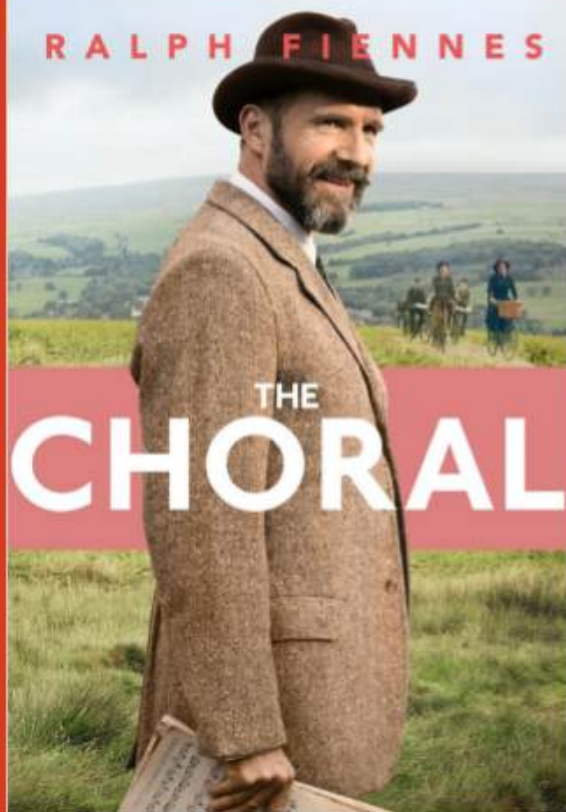
DOORS OPEN 7PM, FILM STARTS 7:30PM

THE CHORAL

£4 for C-FyIm members

Non-members can join on the door for £8, which includes your first film.

RALPH FIENNES



As World War I rages on, Dr. Henry Guthrie takes over a British choral society that's lost most of its men to the army. The community soon discovers that the best response to the chaos of war is to make beautiful music together.

Historical Drama / 12

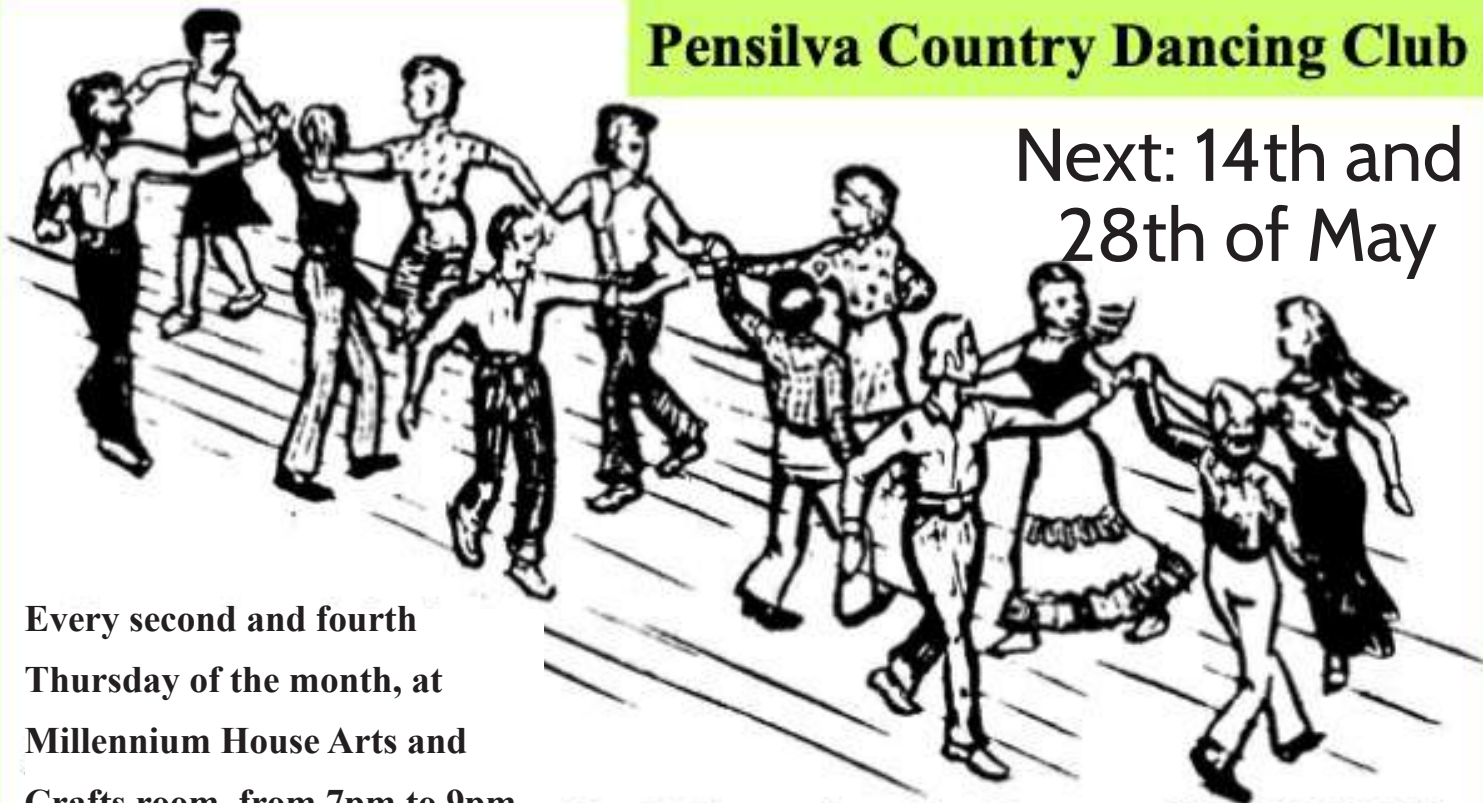
1 hour 53 minutes

SCAN FOR TRAILER ----->



Pensilva Country Dancing Club

**Next: 14th and
28th of May**



**Every second and fourth
Thursday of the month, at
Millennium House Arts and
Crafts room, from 7pm to 9pm.**

For information ring Frances 01579 363718

Badminton at Millennium House

Monday and Tuesday at 5 - 7:30pm - Informal badminton. £10 per hour per court.

Call 01579 363 096

**Mondays and Tuesday from 7:30 - 9:30pm - Pensilva Badminton Club - £5 per
person. Contact Richard 07925 642 938 or Nigel 01579 936594**

Wednesday 5 - 10pm - Informal badminton. £10 per hour per court.

Call 01579 363 096

Please bring your own rackets and shuttles, or you can rent some for a small charge.

WEDNESDAY CLUB, PENSILVA

Meeting in the village hall every 3rd Wednesday of the month. Entry £2.50 which includes raffle and refreshments, 2-4pm. Thank you to all who came to the tabletop sale March, it was very well received!

May 13th - Jane Mann, on being a doctor's wife

June 17th - Pensilva school choir

Everyone Welcome. For further information please contact:

Cherry Woodhouse (Chairperson) 01579 363674

Jane Hall (Secretary) 01579 363379

LADIES WALKING NETBALL GROUP

Fun, friendly, and social!



Every Thursday

4pm - 5pm

Millennium House

Just £2 per session

All abilities welcome. Just turn up!

PENSILVA MEMORY CAFE

If you have memory problems or you are a carer for somebody who does, come and join us at St John's Mission Church for a cuppa and some cake. We'd love to see you and hope that you will enjoy yourself.

Guest Speakers

Activities

Quizzes

Games

2.00 to 4.00 pm

Thursday 28th May

Contact Geoff on 07475 920142



PENSILVA COMMUNITY TABLE TENNIS CLUB

PING PONG FOR EVERYONE!



Most Fridays

5pm - 7pm

Millennium House, Main Hall

Coaching available every session

Contact Andy: 07531482777

All ages & abilities welcome. Join the Aardvarks, Beasties & Chameleons!

MILLENNIUM HOUSE COFFEE SHOP

**RUN BY VOLUNTEERS
OPEN MONDAY 10-3PM, AND
TUESDAY, WEDNESDAY, FRIDAY 9AM TO 1PM***
(*POST OFFICE ALSO OPEN 9AM - 11:30AM)



Come and join us for
coffee and a chat,
tea and a toasted teacake,
freshly baked Cornish pasty,
or sausage roll — and we
even have delicious cakes!



Thank you to everyone
for the support you have
given us over the past 8 years.



St. Ive Village Hall, The Cross PL14 3LZ

HALL HIRE

£5 an hour

Includes use of the kitchen and electric (except wall heaters, which are on a £1 coin meter)

For bookings ring Amanda Eveson

Or 07703393070

Regular Group and Activity Timetable

Gardening Club	1 st Monday monthly 7.30pm	01579 382762
St. Ive Snooker Club	Mondays and Thursdays 7pm	01579 382315 R. Bunkum
Coffee Morning	Wednesday 10.30am – 12	

Fit and Flow Barre, Yoga and Pilate	Monday Evenings 6pm to 8pm (2 nd , 3 rd and 4 th Mondays)	Jayne 07597383171 Facebook@jemfitnesslisheard Instagram jemfitnes_
---	--	---

Methodist Sunday Service	Check timetable in Parish Pump for services	Kathryn or Keith Mutton 01579 382334
--------------------------	---	--



Gardening Club

**St. Ive Village Hall
The Cross, St. Ive
PL14 3LZ**

**1st Monday of the month
7.30pm**

**New members welcome
Email: stivegardeningclub@gmail.com**

St. Ive Village Hall PL14 3LZ Snooker Club



Monday and Thursday Evenings Contact Ray
Bunkum: 01579 382315

St. Ive Village Hall PL14 3LZ COFFEE MORNING



**Every Wednesday Morning
10.30 until 12md
Tea/Coffee and cake**

Small, fun and friendly fitness classes in St Ive

**Join Jem Fitness on Monday evenings at St Ive
Village Hall**

6:15 pm - Fit and Flow

A mix of Barre, Yoga and Pilates inspired movements set to music. This class will help you stretch out any aching muscles.

7:10 pm - Groove-it Fit

A full-body toning dance fitness class in an interval style. This class is great fun and maximises calorie burn.

For further information or to book, contact

Jayne at Jem Fitness

07597 383171

jaynemartin769@gmail.com



Pensilva Table Tennis Club

As the year continues, so does our table tennis provision with the St Ive and Pensilva Parish Council providing financial support to the newly formed Pensilva Community Table Tennis Club, enabling the club to purchase three new competition quality tables to add to our existing provision. We now also will benefit from having our own fully qualified coach. Welcome Martin.



Keen to investigate this new provision? Merely turn up at the Millennium House on almost any Friday between 5pm and 6pm (under 16's) and enjoy the fun that is PING PONG. For those older Pensilvians who also want to discover the joy of exercising through playing table tennis, turn up a bit later, between 6pm and 8pm and see how much fun playing table tennis can bring to your world.

Why play tennis tennis? Read any article about the benefits to be gained from playing table tennis and you will come across the following.

“Playing table tennis offers a wide range of benefits, encompassing physical fitness and social well-being. It is a fun, inclusive and accessible sport for people of all ages and skill”.

“Table tennis is highly inclusive, benefiting all ages and abilities by promoting physical health, mental agility, and social connection. It's affordable, accessible indoors or outdoors, and can be played anytime, fostering joy, laughter, and community. Regular play enhances brain function, reduces stress, and encourages social interaction, making it a versatile, enjoyable sport for personal well-being and social bonding”.

Table Tennis has the potential to enhance every aspect of your life!

So... what's not to like?

Currently we are booked into Millennium House, Pensilva on most Fridays between 5pm and 8pm as indicated above. Specifically, this month, on 6th and 13th March but not on 20th and 27th March. Beyond the month of March, we are booked in as follows.

May 1st, 8th, 15th, 22nd, 29th; June 5th, 12th, 19th, 26th; July 3rd, 10th, 17th, 24th.

Further bookings will be confirmed in the PARISH PUMP as we progress through the coming months.

Looking forward to meeting many more new members over the Spring and Summer as the incessant rain does not prevent us from playing.

Andy

Millennium House Community Transport

Do You Require Transport
for an appointment, shopping or any other?

Our Parish has a number of volunteer drivers who have agreed to help those who do not have transport, by using their own vehicles to help those in need.

Our aim is to connect local communities and reduce social isolation. We do need more volunteer drivers to cope with the demand. If your retired and would like to volunteer please contact us.

or if you require transport to Hospital; Doctors, Vaccination etc, and have mobility issues and are unable to drive to your appointment. The more volunteers we have the less frequent we'll be called upon.

Please contact Marlene on **01579 362919** or **07896 994947** and we will endeavour to help.



millennium house
community centre and dynamic venue

All Being Well

We are still open for three mornings a week. A maximum of six members can now attend at one time.

Opening hours:

Monday, Wednesday and Saturday, 9am to 1pm.

Maximum six members at a time for each of three slots within each session: 9:00 to 10:20, 10:20 to 11:40 and 11:40 to 13:00

Prior booking is essential

To book yourself in or for any enquiries, call in at the gym or telephone on **01579 363890**, during the opening hours listed above.

23 years working in our local community to improve health, fitness and well being.

PENSILVA MEMORY CAFE

If you have memory problems or you are a carer for somebody who does, come and join us at St John's Mission Church for a cuppa and some cake.

We'd love to see you and hope that you will enjoy yourself.

Guest Speakers

Activities

Quizzes

Games

2.00 to 4.00 pm

Thursday 28th May

Contact Geoff on 07475 920142



NEIGHBOURHOOD DEVELOPMENT PLAN FOR ST IVE & PENSILVA



Many residents often ask....Why do we need a Neighbourhood Development Plan?

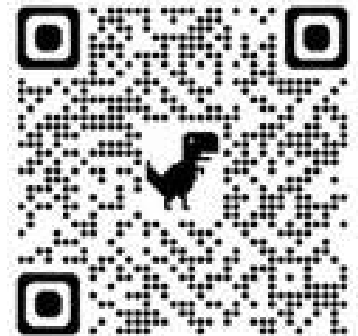
The Neighbourhood Plan directly influences decisions on:

- **Climate Change:** Tackling its causes and effects locally.
- **Housing:** Priorities for affordable and social rent homes.
- **Business & Jobs:** Supporting local businesses, jobs and working from home.
- **Environment:** Protecting our historic environment and countryside.
- **Design:** Ensuring new buildings fit our unique local character.
- **Community Facilities:** Safeguarding and enhancing the key services.

If you would like to view the draft Neighbourhood Plan, use the QR code →

The QR code will take you to our dedicated website:

plan4stive.co.uk



YOUR PARISH

YOUR PLAN

YOUR SAY

NDP Steering Group



Monday to Saturday except for bank holidays

buses towards Liskeard

Service No	74	74	74	74	74	74	74	74	74	74	74	74	74	74
	SD	SSH								SSH	SD			
Callington Community College											1510			
Callington Tesco														1805
Callington New Road		0740	0755	0915		1115		1315		1515	1520		1715	1808
Callington Lansdowne Road		0743	0758	0920		1120		1320		1520	1525		1720	1811
St Ive Butchers Arms		0751	0806	0928		1128		1328		1528	1533		1728	1819
Pensilva The Cross		0759	0812	0935	1035	1135	1235	1335	1435	1535	1540	1645	1735	1825
Crows Nest Crows Nest Inn		0807	0819	0943	1043	1143	1243	1343	1443	1543	1548	1653	1743	1832
St Cleer Market Inn	0722	0817	0829	0952	1052	1152	1252	1352	1452	1552	1557	1702	1752	1842
Tremar Telephone Box	0725	0821	0832	0957	1057	1157	1257	1357	1457	1557	1602	1707	1757	1845
Liskeard Trevecca Cottages	0730	0826	0837	1003	1103	1203	1303	1403	1503	1603	1608	1713	1803	1850
Liskeard School & Community College		0830												
Liskeard Hospital	0733		0840	1007	1107	1207	1307	1407	1507	1607	1612	1717	1807	1853
Liskeard Morrisons	0736		0843	1010	1110	1210	1310	1410	1510	1610	1615	1720	1810	1856
Liskeard Post Office arr	0738	0835	0845	1014	1114	1214	1314	1414	1514	1614	1619	1724	1814	1858
Liskeard Post Office dep	0745			1018	1118	1218	1318	1418	1518	1620	1620	1725	1815	
Liskeard Railway Station	0747			1020	1120	1220	1320	1420	1520	1623	1623	1727	1817	

buses towards Callington

Service No	74	74	74	74	74	74	74	74	74	74	74	74	74	74
	SD	SSH								SSH	SD			
Liskeard Railway Station				0945	1045	1145	1245	1345		1445	1445	1559	1647	1749
Liskeard Lloyds Bank arr				0948	1048	1148	1248	1348		1448	1448	1602	1650	1752
Liskeard Lloyds Bank dep	0715	0715	0855	0955	1055	1155	1255	1355		1455	1515	1605	1705	1800
Liskeard School & Community College											1525			
Liskeard Morrisons	0718	0718	0858	0958	1058	1158	1258	1358		1458		1608	1708	1803
Liskeard Hospital	0721	0721	0901	1001	1101	1201	1301	1401		1501		1611	1711	1806
Liskeard Trevecca Cottages	0725	0725	0905	1005	1105	1205	1305	1405		1505	1530	1615	1716	1810
Tremar Telephone Box	0730	0730	0910	1010	1110	1210	1310	1410		1510	1536	1620	1721	1815
St Cleer Market Inn	0734	0734	0914	1014	1114	1214	1314	1414		1514	1541	1624	1726	1819
Crows Nest Crows Nest Inn	0742	0742	0924	1024	1124	1224	1324	1424		1524	1551	1634	1736	1827
Pensilva The Cross	0750	0750	0932	1032	1132	1232	1332	1432		1532	1600	1642	1745	1835
St Ive Butchers Arms	0755	0755	0939		1139		1339			1539	1606		1751	1840
Callington Westover Road	0803	0803	0947		1147		1347			1547	1614		1759	1848
Callington New Road	0805	0805	0949		1149		1349			1549	1616		1802	1850
Callington Community College	0813													
Callington Tesco														1804

SD Schooldays only

SSH Saturdays and School Holidays only

These sections of journey are operated across by service 73
The full timetable can be found on the previous pages

Monday to Saturday except for bank holidays

Service No	74A	74A	74A	74A	74A	74A
	SSH	NS			SSH	
Callington New Road	0830	0915	1115	1315	1515	1715
Callington Tesco	0833	0918	1118	1318	1518	1717
Ashton Post Box	0839	0924	1124	1324	1524	1723
St Dominick Primary School	0844	0929	1129	1329	1529	1725
Callington Tesco	0854	0939	1139	1339	1539	1733
Callington New Road	0857	0942	1142	1342	1542	1735

SSH Saturdays and School Holidays only

NS Not Saturdays

Up to date times can be found on the Transport for Cornwall website - PLEASE check before travel if timing is critical:

transportforcornwall.co.uk/services/TFCN/74

St John's Mission Church

Refreshments served before and after services

Services for May 2026

Sunday 3rd 11.00 am Morning Worship

Sunday 10th 11.00 am Holy Communion

Sunday 17th No service at St John's

10.30 am St Cleer Parish Church *Thy Kingdom Come* United Worship

Sunday 24th 11.00 am Morning Worship

Sunday 31st No service at St John's

10.30 am Quethiock Parish Church United Benefice Worship

Thursdays 10.00 am Morning Prayer Fellowship

MAY EVENTS *Please see posters for full details*

Thursday 7th 12.00 - 1.30 pm Baked Potato & Pudding Lunch

Wednesday 13th 2.00 - 4.00 pm *Kowetha*

Sunday 17th 3.45 pm Tea Time Church for children & their families

Tuesday 26th 2.00 - 4.00 pm Stitch, Knit & Natter

Thursday 28th 2.00 - 4.00 pm Memory Café



For further details or if you know of any illness or need in the village, please call Geoff, 362698 or Frances, 363718. Please put prayer requests in the box. St John's is open daily 10.00 am - 4.00 pm for personal prayer & reflection.

St John's Mission Church

Princess Road Pensilva PL14 5NF



THE CHURCH
OF ENGLAND

The Tribute Benefice

Contact for Baptisms & Marriages

Reverend Li Selman 07790 272714

revliselman@icloud.com



Church Wardens
Geoff & Carolyn Cox
07475 920142



Baked Potato & Pudding Lunch



St John's Mission Church Pensilva

Thursday 7th May 12.00 to 1.30 pm



christian
aid *Raffle*

Bring & Buy
Stall

Donations for **Christian Aid**
We believe in life before death

**stitch
knit and
natter**

Do you enjoy stitching,
knitting, crocheting?

Join our friendly knit and natter group.
Come and meet new friends and swap tips
and ideas - all ages and abilities welcome!

Drop-in!

There is no charge for this activity but there is a Donation Box if you would like to make a cash contribution.

**Tuesday
26th
May**

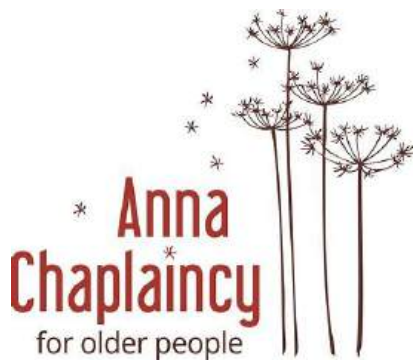
**St John's
Mission Church
Pensilva**

**on the
last Tuesday
of the month**

**2.00
to
4.00 pm**

**Contact Kathleen
01579 363686**

Kowetha



The Tribute Benefice



**Companionship
Friendship**



THE CHURCH
OF ENGLAND

A warm place to drop in

**for
company
and
refreshments**



**St John's Mission Church
Pensilva**

2.00 - 4.00 pm

Wednesday 13th May

The 2nd Wednesday of the month



**Contact: Geoff Cox
07475 920142**

gefferys1963@gmail.com



Teatime Church



For children and their families

Playing Games

Singing and Praying Together

Sharing a Bible Story

3.45 pm
Sunday 17th May
St John's Mission Church
Pensilva

Eating Tea

For more information
contact: Rev Li Selman
revliselman@icloud.com



Liskeard & Looe Foodbank

helping local people
in crisis



St John's Mission Church

Collection Point

Please leave items
on the shelf in the
entrance hall
between

10.00 am & 4.00 pm



Liskeard & Looe
Foodbank
Together with Trussell

Thank you

Unity Methodist Church

Sunday 3rd May 11.15am - United Service at St Ive Parish Church



Sunday 10th May 10.30am - United Service at St Ive Village Hall, led by Rev Stuart Reed with Communion.

Sunday 17th May 11.15am - United Service at St Ive Parish Church

Sunday 24th May 10.30am - United Service at St Ive Village Hall led by Mark Pellow.

Sunday 31st May 10.30am - United Benefice Service (See Church Services for details)

The Chattermakers craft group will meet on alternate Thursdays at 7.30 in the Village Hall. This month those dates are 14th and 28th May. All welcome. More details from Kathryn 01579 382334

St Ive Church

May 3 rd	Morning Service	11:15am in church
May 10 th	Chapel Service	10:30am in village hall
May 17 th	Holy Communion	11:15am in church
May 24 th	Chapel Service	10:30am in Village Hall
May 31 st	Benefice Service	10:30am Quethiock church

Events

We look forward to welcoming back the Polperro Male Voice Choir with the Wreckers on Friday October 2nd.

ADVERTISE HERE

Reach a highly local audience with 1,000 printed copies distributed, plus online downloads.

TWO MONTHS FREE when you purchase a full year (12 issues):

Quarter page - £10 per month, or £100 for a year

Half page (this unit) - £20 per month, or £200 for a year

Full page - £33 per month, or £330 for a year

(All prices are inclusive of VAT. Please note that all new advertisers must pay in advance.)

Contact stiveparishpump@gmail.com to enquire!



Colin Swinburne Electrical Services



All aspects of domestic and commercial electrical work.

Inspection and testing (EICRs), fault finding, new installations, rewires, consumer unit replacement, additional sockets, lighting upgrades, garden power and lighting, extractor fans and more.

Local Electrician in Pensilva. Free advice and quotes.

4.9 ★★★★★ Google reviews



CSES@btinternet.com • 07974 499138

JT Fencing Limited

Commercial & Domestic
Quality Fencing
Expert Installation

JT FENCING LIMITED

- Garden & Boundary Fencing
- Agricultural & Livestock Fencing
- Excavating Services
- Security & Commercial Fencing
- Gates & Custom Installations

Contact Us

01579 58021
office@jtfencing.co.uk
www.jtfencing.co.uk

SHARMANS
EXTERIOR CLEANING

We cover all aspects of exterior cleaning, residential and commercial.

- Driveways
- Patios
- Windows
- Gutters
- Soffits and fascias
- Solar panels
- Roofs
- Brickwalls/Paving
- Soft washing
- Pressure washing

07368 652299

WhatsApp 07368 652299

Info@sharmans-cleaning.co.uk

FB - Sharmans Exterior Cleaning

Fully licensed and insured!






Please get in touch for your free no obligation quote.



FULLY CHARGED CORNWALL

High quality eBike rental



-  eCargo bikes
-  All terrain eBikes
-  Long range batteries
-  Accessories
-  High powered Bosch motors

-  **Daily, weekly and long term hire rates**
-  **Delivery and collection to your home/holiday address**
-  **Group bookings welcome**

Tel: 01579 558879 email: swrental@fullycharged.com

KJ WILDERSCAPES

Garden & Landscape Design

Including

Garden Design · Wildlife Friendly Gardening
Landscaping · Pruning · Maintenance · Advice

Email: kjwilderscapes@gmail.com

Tel: **07939 585375**

www.kjwilderscapes.co.uk

HEEL2TOE

My name is Penny Jordan Dip FH, a Foot Health Practitioner, fully qualified to Diploma level. I am also insured and DBS checked.

If you need toenails cut and filed, you are a Diabetic, have Callus formation (hard skin), fungal infection of your toenails, or anything regarding your feet that worry you.

I can arrange a home visit by appointment so your feet can be looked after in the comfort of your own home.

Please contact me:-

07746 926146



Westwood
Garden
Maintenance

Antony Watts

Grass Cutting, Clearance,
Planting, Weeding, Turfing,
Hedge Cutting.
FREE ESTIMATES

01579 362019

07952 094472

www.westwoodgm.co.uk



Right-on Plumbing & Maintenance



Gareth Haimes

Tel: 07947353682

Personal Will Writing

- Professional will writing service in the comfort of your own home.
- Feel confident your instructions are drafted precisely and confidentially.
- Couples can protect their home from residential care fees.
- Lasting power of attorney.
- Living Wills.

Anita is a member of the
Society of Will Writers
Prices are reasonable (no VAT)



Anita Hutt LL.B(Hons) MSWW
anitahutt@gmail.com
01579 344 433

Window Cleaner Window Cleaner

Also any upvc cleaned
i.e. fascias, gutters, etc.

gutters cleared & unblocked

Please phone Rob
01579 384435
079 9099 6886

Window Cleaner Window Cleaner



Local Accountant offering fixed fee accounting services

With over 25 years experience, I am a fully qualified, friendly, local accountant

- ✓ Annual Accounts for Sole Traders and Partnerships
- ✓ Book Keeping & Payroll
- ✓ Personal Tax Planning
- ✓ Company Accounts
- ✓ Business Support & Advice

- ✓ Self Assessment tax returns
- ✓ iXBRL tax filing
- ✓ Tax investigation Fees Insurance
- ✓ Company Secretarial work
- ✓ Tax calculations for Sole Traders and Partnerships

Kate Vaughnley FCCA - Chartered Certified Accountant

Website : www.kvaccountingsolutions.co.uk or Email : katevaughnley@gmail.com

Telephone : 01579 532622 / 07725 004152

INDEPENDENT FAMILY FUNERAL DIRECTORS

Supporting families to arrange funerals with dignity, compassion and care.

Flexible, caring approach providing funerals to suit all needs and budgets.

Local low cost direct cremations, bespoke life celebrations, green burials.

Transparent affordable pricing. Free estimates. See our website for example costs.

Free bereavement support sessions, on the first Wednesday of the month at 10am.

01579 362358

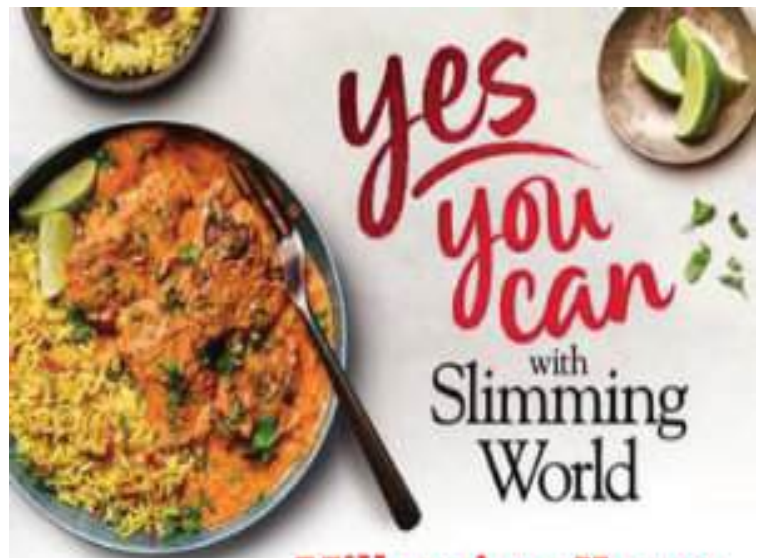
www.fdhallfunerals.co.uk



SEASONED LOGS



Telephone Jonathan
Mobile 07966
070725 or
01579 363157



Millennium House

Friday 5:30pm

Saturday 8am & 9:30am

Hayley 07966370233

slimmingworld.co.uk 

J. J. Child

Plumbing and heating engineer.
Oil appliance service,
repair and breakdowns.

40 years' experience.

Call John:
01579 362336
or
07837 921086



Domestic Electrical
Property Maintenance
Interior & Exterior Work
Carpentry :: Decking
Kitchens :: Bathrooms
Wall & Floor Tiling
General Plumbing

MCCARTHY PROPERTY MAINTENANCE

Electrical Safety
Register

incorporating
ELECTSA  

HIGHLY REGARDED LOCAL BUILDER
COMPETITIVELY PRICED
COVERING THE SOUTH WEST

Contact Dominic

07968 599 675
01579 362 945

info@mccarthypropertymaintenance.co.uk

www.mccarthypropertymaintenance.co.uk

NICOLA GREENE

BSc (hons) Podiatry MChs

HPC Registered Chiropodist/Podiatrist

**Home Visit Practice treating all
your foot care needs:**

- Nail Cutting
- Corns and Calluses
- Thickened Nails
- Dry Cracked Skin
- Verrucae
- Foot Pain
- Diabetic Foot Assessments

M: 07786164205

E: nicki_green@yahoo.com



Demelza's Decor

PAINTING & DECORATING
SERVICES

Interior painting and wallpapering by friendly, reliable mature lady decorator based near Stoke Climsland.

Free quote visits include paint and wallpaper samples.

Contact Cathryn on:

07775 194030

demelzasdecor@gmail.com

www.demelzasdecor.co.uk

Facebook/Demelza's Décor



KERNOW ARCHITECTURAL SERVICES

- Architectural Design
- Planning Permission
- Class Q Specialists
- Building Regulations
- Project Management
- Building Conservation

www.kernowarchitectural.co.uk

enquiries@kernowarchitectural.co.uk

Telephone: 07398736726

Parade House, The Parade, Liskeard, Cornwall PL146AH

PensilvaCars

01579 363516

- ✓ MOTs Class 4
- ✓ Service
- ✓ Repair
- ✓ Tyres
- ✓ FREE Courtesy Car
- ✓ Car & Van Sales
- ✓ Diagnostics
- ✓ Air Conditioning
- ✓ 

We have offered a supply, fit & balance of tyre service for 10 years at competitive prices.

Most of our tyres can be supplied the same day.

LOCAL RECOVERY £45.00

www.pensilvacars.co.uk

pensilvacars@hotmail.co.uk

We can service and repair your car to manufacturer specification, keeping your dealer warranty without main dealer expense.



NC TREE SURGERY

**Expertise
in all kinds of
tree work**



- Tree felling, dismantling & pruning
- Hedge Cutting
- High quality work
- Left clean and tidy
- Full removal and chipping available
- Fully qualified and insured

**Please call or email
Neil Cloake for a quote**

City & Guilds

Qualified and insured local tree surgeon

NPTC
Qualified



07855 461 483



nctreesurgery@yahoo.com



GENERAL GARDEN & HOUSE MAINTENANCE

NO JOB TOO SMALL

Call to discuss your requirements.
NO OBLIGATION quotes given.

One off jobs or regular work catered for.

Here are some examples...

OUTSIDE



MOWING
HEDGE CUTTING
FENCE PAINTING
BOARDER WEEDING
PATIOS & DRIVES
CLEANED

INSIDE



WINDOWS CLEANED
INSIDE & OUT.
PAINTING
CLEANING
SHOPPING
IRONING

CALL ANDREW CARLIN

now on:

07407 323888

Thank you.



Trystan Phillips



Carpentry/Joinery & Property Maintenance



40 Years' Experience

All aspects of Carpentry undertaken including:

Kitchen Installations

Doors, Partitions, Skirtings, Architraves, Shelving

Timber Floors renewed/repaired, Laminate Floors fitted

Timber Doors / Windows repaired including 'Sliding Sash'

Fully insured
(Including Public & Product Liability)

Plus General Property Maintenance:

Painting/Tiling and much more!

07397 153792 trystanphillips carpentry@gmail.com 01579 363150

PAUL ALLEN

PAINTER & DECORATOR

45 years + Experience

City & Guilds Advanced Qualification

Internal & external work

All paint finishes

All types wallpapering

Minor repairs undertaken

Fully insured

No job too small or too large

Quality assured & guaranteed

I provide a professional service at a reasonable cost

Please contact me for a free estimate

Mobile: 07548 941437

Email: paul.allen300@btinternet.com

Muststep Podiatry



Routine Footcare, Nail Reconstruction, Nail Surgery,
Fungal Nail Treatment, Verruca Treatment,
Specialist Biomechanics and Orthotics, Home
Visits/Nursing Homes, Footcare Advice &
Preventative Care for Low-Risk Patients.

Contact **07522 577 012**

West Looe,
PL13 2HA

Looe Ear Care



Clinic £50 both ears, Home visits from £55, Special
rates for Nursing homes. Thorough eardrum and
canal inspection.

Safe microsuction for ear wax removal, ear
irrigation available when suitable. Includes expert
ear health advice.

Contact **07899 548 979**



MENDOLOGY GARAGE DOORS

Whether you're looking for a new garage door or require a repair on an existing one...

Call Dave on 07974 442645

Your LOCAL Garage Door Specialist
★ Based in Callington ★

Installation • Sales • Repairs

www.mendologydoors.co.uk ● E:dave@mendologydoors.co.uk



Group Travel

Day Trips & Coach Holidays

Enterprise Park, Midway Road, Bodmin, Cornwall PL31 2FQ Tel: 01208 77989

Coach Excursions & Tours 2026

12th May	Dartmoor Prison Museum & Tavistock
28th May	Lamorran House Gardens & St Mawes
11th June	Saltram House & Tamar View Nurseries
23rd June	Buckfastleigh, Butterflies & Otters
6th July	River Fal Cruise & Falmouth
16th July	Forde Abbey and Gardens
4th August	Paignton, Kingswear, Dartmouth & Totnes
15th August	RHS Rosemoor Garden Flower Show
4th-6th Sept	Burghley Horse Trials
21st-25th Sept	Autumn Tour - Oxford & The Cotswolds
14th October	Tavistock Goose Fair

Visit our website for all our excursions & tours.

Call: 01208 77989 for bookings and brochure
 website: www.grouptourcoachhire.co.uk
 email: grouptourcornwall@gmail.com

Bodmin MOT Centre

01208 77989


Garage Services
 MOT Testing Station
 Classes 4, 5 & 7
 Servicing & Repairs
 High Vehicles & Motorhomes
 Brake Test & Headlight Alignment
 Pre MOT Inspections
 Annual & Interim Vehicle Servicing
 ~
 Commercial interim inspections available
 including brakes and lights
 ~
 Helping you stay compliant

Bodmin MOT Centre
 Enterprise Park, Midway Road,
 Bodmin, Cornwall PL31 2FQ



FULLY CHARGED CORNWALL

eBike specialists on your door step

-  A wide choice of 'best' in market eBikes
-  All major cycle schemes accepted
-  0% and long term finance available
-  Try before you buy with home demo's



Long-tail eCargo



eMtb



Front-load eCargo



Large range of leisure/commuter eBikes

 cornwall@fullycharged.com

 TEL: 01579 558879

 Open 10 am -4pm
except Wednesday and Sunday



Unit 1, Old topfoto buliding , Barras Place, Liskeard PL14 6AY

TRELOWEN *flowers*

Seasonal bouquets from APRIL-OCTOBER
Send flowers by post
Wedding events • Bridal bouquets
DIY Flower buckets • Funeral arrangements

WORKSHOPS

(Held at Trelowen in Netherton, £45pp)

Living Wreaths — 28 March

Willow Plant Supports — 15 April

Hand-tied Bouquets — 13 & 16 May

Floral Meadows — 15 & 18 July

Secure your place online

07814 820950

INFO@TRELOWENFLOWERS.COM

📷 /trelowenflowers 📺 /trelowenflowers

WWW.TRELOWENFLOWERS.COM



RCL Services
Garden Maintenance
and Carpentry



Honest, Reliable & Hardworking

Pruning

Grass Cutting

Hedge Trimming

Strimming

Recently qualified carpenter

General repairs

Also happy to help out as an extra pair of
hands or farm work



Call Ross on

07483 827009

for more information



Beverley Underwood Complimentary Therapist & Ordained Celebrant

COUNSELLING & HYPNOTHERAPY
SPORTS, DEEP TISSUE & REMEDIAL MASSAGE
ADVANCED REFLEXOLOGY
AROMATHERAPY, THAI & HOT STONE MASSAGE
INDIAN HEAD MASSAGE
NATURAL FACIALS & FACE UP-LIFT MASSAGE
HOPI EAR CANDLING
REIKI HEALING & TEACHING

BESPOKE CEREMONY
WEDDINGS
FUNERAL & MEMORIALS
NAMINGS & BLESSINGS

0777 9961182

beverleyunderwood@sky.com

20
Years
Service

Pensilva Stores

Amazing Value



Premier
a great deal more from your local store
Mon-Sat. 7:00 AM. - 9:30 PM.
Sunday 8.00 AM. - 9:30 PM.

- ✓ Fantastic Special Offers every month!!! (See store leaflets)
- ✓ Come and Check out our great deals on Wine, Beer and Spirits
- ✓ Local Produce: Homemade Butter and Clotted Cream, Meat from our local butcher
- ✓ Cornish Fresh Fruit and Vegetables
- ✓ Fresh Bread, Pasties and Cakes
- ✓ Take Away Coffee, tea and hot chocolate
- ✓ Newspapers and Magazines, Greeting Cards
- ✓ Paypoint, Lottery



* **Free to use ATM** *

* **Card Payment** *

Friendly Staff + Service with a Smile !!!

Pensilva Stores is a family run business who have been serving local people and visitors for more than 21 years.

Higher Road, Pensilva, Liskeard, Cornwall PL14 5NQ
Tel: 01579 362547



Pensilva & St Ive Post Office Service

Pensilva: Through the coffee shop on the 1st floor of Millennium House

Tuesdays: 9 to 11:30am

Wednesdays: 9 to 11:30am

Fridays: 9 to 11:30am

**The Millennium House
coffee shop is also open on
these mornings.**

**Unfortunately, the St Ive Village Hall drop-in
post office has now closed.**