

JANUARY 2025

# THE PARISH PUMP

NEWSLETTER FOR THE PARISH OF PENSILVA AND ST IVE



ISSUE NO.514

We opened on January 2nd, 2000 ...



... and we're still going strong!

We'll be celebrating our 25 years with an OPEN DAY in  
the gym on

Saturday January 4th, 2025

Everybody is very welcome. We'd love to see you!

Full details inside

## DISCLAIMER

The articles appearing in this magazine do not necessarily represent the views of the Parish Council nor of the Parish Pump Editor.

### Parish Councillors Telephone List

Alan Moss	01579 362064	Marlene Carr	01579 362919
Rosemary Farley	01579 384810	Martin Corney	01579 382450
Tony Hodson	079 7353 6964	Nigel Gisby	01579 363096
Paul Mann (vice chair)	01579 363757	Nigel Libby	079 6889 1814
Ivor Vaughan	079 7993 4604	Patricia Steer	01579 363096
James Bruce	074 1119 2645	Craig Vaughley	01579 364083
Steve Willis (chairman)	01579 363096		

Your Cornwall Councillor is Phil Seeva - 07746 815302 [cllr.phil.seeva@cornwall.gov.uk](mailto:cllr.phil.seeva@cornwall.gov.uk)

### Meetings of St Ive Parish Council

Meetings are usually held on the second Monday of every month, except August and December when no meeting is held. Please see the website or notice board for meeting dates, agendas, and minutes.

<https://st-ive-parishcouncil.gov.uk/minutes-agendas/>



## Police Community Neighbourhood Office

Your Community Support Officer is PCSO Steve Edser 30173

Email: [CIOsnbmlst@devonandcornwall.pnn.police.uk](mailto:CIOsnbmlst@devonandcornwall.pnn.police.uk)

To report a crime call 101 or go to [www.devon-cornwall.police.uk](http://www.devon-cornwall.police.uk)  
In an emergency call 999

## Contact Details for St Ive Parish Council and Millennium House

Address for correspondence:  
Millennium House, Century Square, Pensilva PL14 5NF

General Parish matters should be raised initially with the Parish Clerk, Jenny Hoskin, who will present them to the Parish Council 01579 363096, email: [stiveparish@btconnect.com](mailto:stiveparish@btconnect.com)

For finance matters for the Parish and Millennium House, contact John Body  
01579 362102, email: [millenniumhouseadmin@btconnect.com](mailto:millenniumhouseadmin@btconnect.com)

Millennium House enquiries and reservations to Vanessa  
01579 363096 email: [ness.mhouse@gmail.com](mailto:ness.mhouse@gmail.com)

### Parish Pump Submissions

Via email only to [stiveparishpump@gmail.com](mailto:stiveparishpump@gmail.com)

The deadline for submissions is the 18th of the month. Please email your text submissions directly in the email body, and attach any images. Full, half, or quarter page poster designs can be sent as JPG, PNG, or PDF files.

### Advertising Costs

Please note that all advertising must be paid for prior to publication. Two months free when purchasing for a year, and the cost can be spread over quarterly payments.

Quarter page: £10 per month, or £100 for 12 months

Half page: £20 per month, or £200 for 12 months

Full page: £33 per month, or £330 for 12 months

(All prices are inclusive of VAT)

## Letter from The Editor

December was packed full of events, from the fantastic Christmas Market and community lunch, to the New Year's Eve disco and more. I'm knackered, and I think we could all do with a bit of a boring January to recover. It's a light pump this month, because not a lot is going on.

I took over the Parish Pump about a year ago, and started my column talking about Artificial Intelligence and the impact it was going to have on society. This month, I thought I might revisit that, and see where we're at. Then I promise to shut up about AI for at least ten minutes.

At the time, ChatGPT had reached critical mass, as the first AI that could output text indistinguishable from a human. And just like that, homework would never be the same again.

A year on, and the advances being made are truly unbelievable, even to someone deeply embedded in the tech world.

ChatGPT's latest model has passed an IQ test and qualified for MENSA; that ranks it in the smartest 2% of the population. It can reason through problems, thinking about every aspect of it before returning an answer. It even has a voice mode, in which you can talk in a very natural way, interrupting it in mid-sentence, and it responds with emotion and nuance. Initially it could even sing, too, but lawyers put a stop to that feature.

Image generators had just about figured out how to make hands with only four fingers and one thumb. Now Facebook is flooded with bookshelves that look like trees, impossible bunkbeds, and VW conversions. Virtual influencers are an actual thing now, with characters able to maintain consistency, posing anywhere in the world and wearing anything you conceive of. They advertise real products while living a fake life.

But more important than the technical capabilities: how has it impacted our lives? Of course, I can only speak for myself.

As predicted, AI continued to decimate the online publishing industry, with lay-offs from major publications leaving myself and colleagues wondering what was next. It turns out that much of what is written online is merely re-hashed press releases, product summaries, or formulaic noise. You don't need a human for that.

Coding was at least one skill I thought I still had over the AI. It could help me with small, specific issues, but anything beyond a few lines of code just tended to fall apart. Now, when I sit down to do some programming, I open my AI coding assistant, and describe the app I want to make. It lays down the framework, makes a prototype, and spins up a local copy for me to test. If I have a specific visual idea, I sketch it on paper and upload a photo; it makes it a reality. Of course, I still have to iterate, fix bugs, describe features I want to add... but I do that by chatting with my AI assistant, too. I haven't written a single line of code in months, yet I've programmed more apps than in a lifetime. I'm no longer limited by technical skills, but my imagination.

A few months ago I was feeling quite down about my job situation. So I told ChatGPT to act as a therapist, and it was surprisingly helpful at reframing what seemed like a wasted decade of skill development into being a "solutions provider".

Generative video is the next frontier for AI, and it's in an interesting place right now. While western companies have been hampered by fears of regulation and legal action from celebrities, keeping their models locked down and away from the public, Chinese companies have filled the gap with no such qualms. Anyone can register at KlingAI.com and have a go at video generation, and the results are impressive.

While some work will inevitably be done by AI, and there are already job losses on an unfathomable scale, I don't feel so afraid anymore. I feel empowered. And I'll urge those of you still working to learn these incredible new tools...before your coworker does.

*James*

## Chairman's Column

In December, the Parish Council does not hold a meeting so as you can imagine, this report will not stretch very far! What did happen however was a get-together in Millennium House for all the staff and volunteers who keep the whole thing moving. It's quite humbling to see and meet all those who give freely of their time so that Millennium House and the parish in general goes from strength to strength. Volunteering is a very rewarding way of life no matter what your age but particularly for those who are "a little older", shall we say. It gives a purpose to life and an opportunity to meet and in various ways, help fellow residents of the parish. I can thoroughly recommend it!

As I have mentioned before, I write this column weeks before you see and read it so I hope you all had a wonderful Christmas and New Year even though it hasn't happened yet!! There was certainly plenty of events on over the festive period both in Millennium House and round and about. On behalf of the Parish Council though, I do wish you all the very best for 2025.

Yes, there will be challenges, particularly with this particular Labour government but I'm sure with our great community spirit, we can face anything Kier and his cronies throw at us.

Once again, a very Happy New Year *Steve*

## Defibrillator Training (Free & Open to All)

The use of the Defibrillators is not just for the Paramedics, but for the general public to use in case of emergency.

It's important to give aid to a casualty quickly whilst waiting for the Ambulance to arrive—and the training certainly helps to understand how and when to use them. Hopefully they will never have to be used, but they could save the life of a neighbour or family member. This could be a refresher for those who have had training.

We have two Defibrillators, one sited at Millennium House and the other at the Village Hall, St. Ive.

This free training course is free and open to all members of the parish, to be held on Wednesday, January 22<sup>nd</sup> at 7pm in Millennium House.



## Millennium House

Hi Parish Pump Readers, and Happy New Year! I hope that you all had the most wonderful Christmas and New Year! To everyone who joined us here at Millennium House over Christmas and our New Year's Eve Disco, thank you for celebrating with us!

A big thank you to Phyllis and the events team for such a wonderful Social Christmas Lunch! All the prepping, planning and cooking made a great celebration for all, and it would not have happened without the donations from Terry and Vicky from Pensilva Stores, Carolyn and Geoff Fox, and Trefrize Farm.

This January at Millennium House we have ...  
**Wednesday 1st** - the lovely Colleen will be opening Mel Bar from 3pm to 10.30pm! After you have finished your New Year's Day Lunch, pop in for a drink to celebrate the New Year!

**Thursday 2nd** - start the new year with a clear mind on your Yoga mat with Laura Louise Yoga at 10am weekly. Book your spot at [millenniumhouse.org.uk/yoga](http://millenniumhouse.org.uk/yoga). Your other mat may be with Ron at Aikido from 7.30pm weekly.

**Friday 3rd** - Penmill Art Group welcomes you to come along and be creative in your own way. Whether you bring painting, sketching or otherwise, come along from 10.30am weekly. Hayley welcomes you to join Slimming World weekly from 5.30pm.

**Saturday 4th** - if you can't make it on Friday, Slimming World is also on either 8am or 9.30am weekly.

**Monday 6th** - enjoy some gentle exercise with MIMS from 10.30am every Monday. Step onto the mat with Laura Louise Yoga from 5.30pm weekly. Remember to book on the link above and bring your mat along with you. Get ready at the net with Badminton from 7.30pm to 9.30pm weekly.

**Tuesday 7th** - join Clare at Singing for Wellbeing and have a wonderful new year sing along from 10am weekly. Swing into Badminton from 7.30pm weekly.

**Wednesday 8th** - Kixx are back and ready to get all your little ones active! Contact Coach

James to join weekly from 9.40am! ([jamesurie@kixx.org.uk](mailto:jamesurie@kixx.org.uk)). Liskeard Super 1's are back for some Cricket from 5pm weekly. The Pensilva W.I. will be having their open evening from 7.15pm. To book contact Alison on 01579 362 505.

**Thursday 9th** - Tammy and her Baby and Toddler group are back! Join Tammy from 9.15am weekly during term time. Pensilva Folk Dance Group welcome you to come dancing with them from 7pm to 9pm fortnightly (9th & 23rd January)

**Tuesday 14th** - The Westernairs are back and welcome you to join their recreational amateur wind band. They play every Tuesday from 7.30pm, contact Sue for more info or interest in joining [susanne.daniel@btconnect.com](mailto:susanne.daniel@btconnect.com)

**Wednesday 15th** - Sing & Sign with Natalie is back! Book in for your age appropriate session from 0 to 30 months old at [nataliecole@singandsign.co.uk](mailto:nataliecole@singandsign.co.uk). Pensilva School Table Tennis Club will be starting and will run weekly from 3.30pm to 4.15pm. Bingo dabbers at the ready, Colleen and Ruth need you to be eyes down at 7.30pm.

**Friday 17th** - Pensilva Film Club will be showing "Miss Saigon" with doors opening at 7pm and film starting at 7.30pm. new members can join on the door for £6 which includes the film. Members pay £4.

**Saturday 18th** - PT Amy welcomes you to join her weekly Saturday morning Fitness Session with Amy from 9am to 10am!

**Wednesday 22nd** - Do you know how to use a Defibrillator? Or need a refresher? Come along at 7pm for Defibrillator training. It is free to attend and all are welcome!

**Saturday 25th** - Pensilva School needs your support, come along to the Jumble Sale from 10am.

There will be no Pensilva Market Day this month, however you can come along on **Sunday 2nd February 2025** from 11am to 2pm and support the local traders and have a nice hot drink with something warm to eat too!

Have a joyful January

Vanessa

*All Being Well* are holding an  
**Open Day**

in the gym at Millennium House, Pensilva on  
*Saturday January 4<sup>th</sup> 2025*  
to mark 25 years of helping local people to be  
active and healthy.

Everybody is invited and we hope to see as many of you as possible. In particular we would love to see past and present gym members and staff, but we encourage any and all well-wishers to drop by on the day to help us mark the event.

**The event is free to all.**

**Programme:**

The gym will be open as usual for members between 9am and 1pm. Current members may book their slots as usual. We will not be charging session fees that day. Other visitors are very welcome to drop by between these times for a chat.

From 1pm to around 5pm the gym will remain open for social visitors. We will provide free refreshments (tea, coffee and cakes, while stocks last!) for anybody dropping in to say hello, take a look, or just wish us well for the next 25 years!

All welcome but young people must be accompanied, please.

**We hope to see lots of you there on the day!**

## Pensilva and St Ive Food Hub

**Rivendale, School Road, Pensilva PL14 5PG**

The idea of the food hub is to serve as a bridge between supermarkets and the local community, redistributing surplus food that might otherwise go to waste.

Every Wednesday morning from 8.00 am until 5.00 pm the hub is open and food can be collected from the above address.

Donations for food are always welcome and will go towards purchasing more food for the following week.

A pink bin will be placed by the wooden box on the driveway. If you have any surplus in date food and would like to make a donation, please place it here. If you are donating homemade cakes, please list the ingredients used.

If anyone is experiencing financial hardship or would like benefit advice, we can take referrals and signpost you to the local Food Bank in Liskeard.

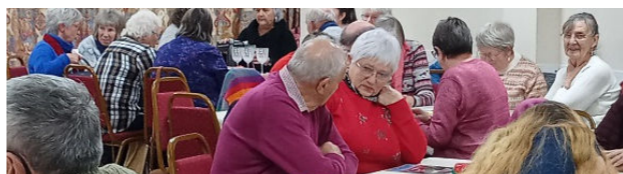
We are currently in the process of creating a Facebook Page to provide more information to the community.

In the meantime, if you know anyone who is vulnerable, or needs support in the Pensilva and St Ive area, please contact Janey Bryson on 078 0866 3749.

Thank you

## Pensilva WI - December Report

A quick bit of business and great feedback from the Christmas meal at Great Trethew and a Craft day at Cowslip got this month's meeting started. Members and their guests were welcomed, then it was straight into table challenges - Festive dingbats, Carol and Hymn anagrams/word puzzles and the alphabet naming Cornish places - apparently the only letter that can't be completed is 'x' - unless you know different?



Posies were given to members celebrating December Birthdays: Pat Bates and Tina Tubby.

Everyone was then ready to tuck into the amazing spread laid on - bring and share is always a wonderful feast in Pensilva! Vol au vents, sandwiches, pinwheels, platters, quiche, sausage rolls - an endless list!

And then dessert - cake, shortbread, meringues, cheesecake...



Once everyone was content and tummies were full, it was time for

Bingo - prizes won for 1 and 2 lines and of course the full house. After the answers were given and totting up of points from the challenges, there was the sound of bells as 2 Elves and Santa arrived to give out handmade gifts to all members and chocolates to the visitors. President, Verna thanked everyone and wished all a very Happy Christmas. The evening was rounded off with a rendition of Auld Lang Syne.



Pensilva WI are **collecting used stamps** for CFWI (Cornwall Federation of WIs) - all money raised will go to events within Cornwall. Please give to any member or put in the collection box at Millennium house. Perfect time to recycle those on Christmas card envelopes. Thank you!

**The January Meeting is a special event open to Everyone: Wednesday 8th January** - an evening with **Tony Rea from Great British Sewing Bee**. £5 for visitors and there will be a raffle for Tony's charity. He will display some of his creations and talk about his time on the show. 7.15pm Millennium House. All welcome!

*Mary*

PENSILVA



Free Entry

Featuring local sellers, craft stalls, indoor carboot, baked treats, and live plants. Refreshments available and bar!

£5 per table



← MILLENNIUM HOUSE PRESENTS →

# PENSILVA MARKET DAY

**FIRST SUNDAY OF THE MONTH;  
NEXT MARKET DAY IS...**

# 2<sup>ND</sup> FEBRUARY

SELLERS FROM 10am; BUYERS 11am-2pm

Call Vanessa on 01579 363096 or email [ness.mhouse@gmail.com](mailto:ness.mhouse@gmail.com) to book your table or other enquiries

Fancy something spicy for lunch instead of the usual pasty? Hui will be selling Kimchee Noodles (and jars of homemade Kimchee and chilli oil if you want more!)

PRINCESS ROAD, PL14 5NF



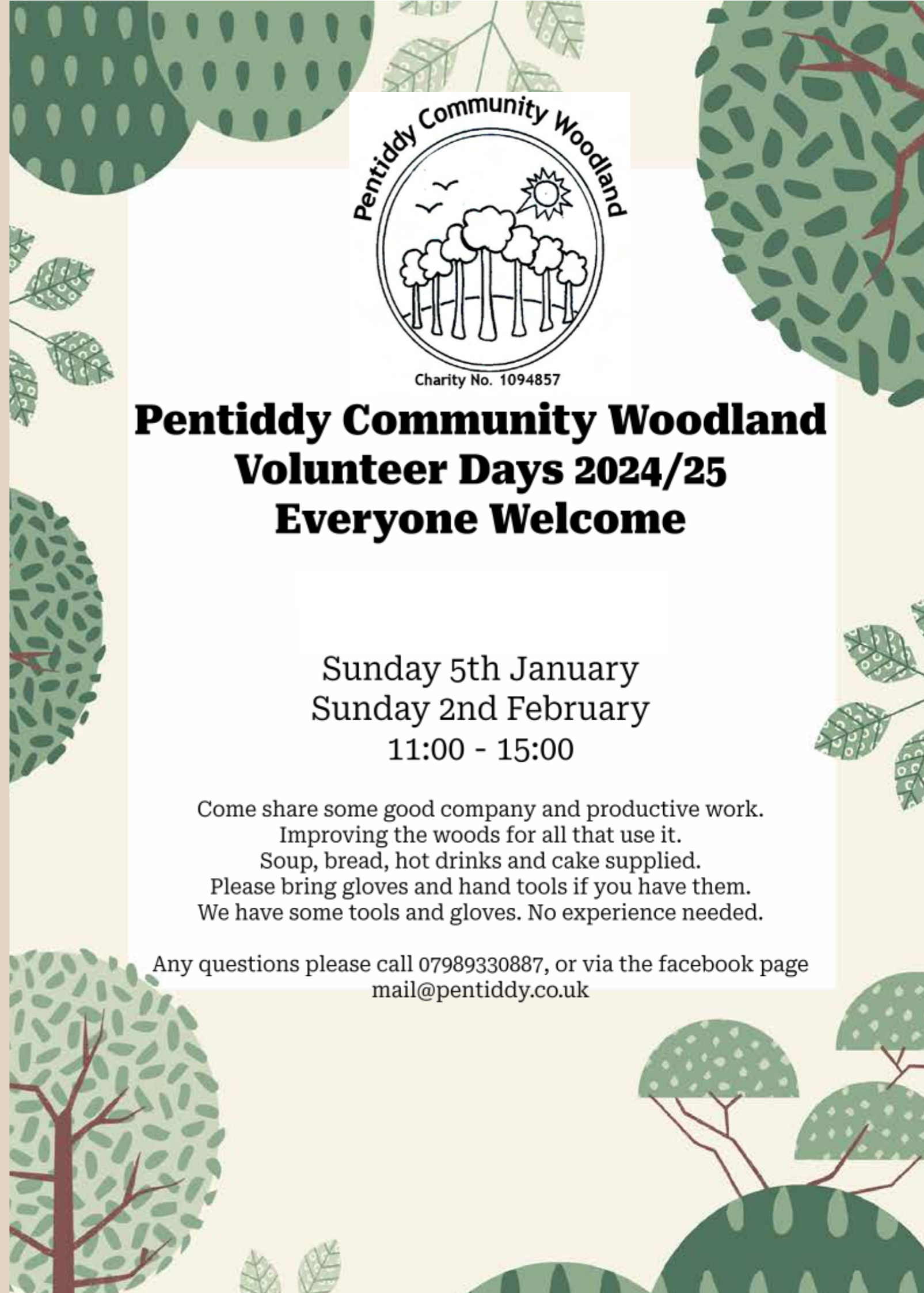
Charity No. 1094857

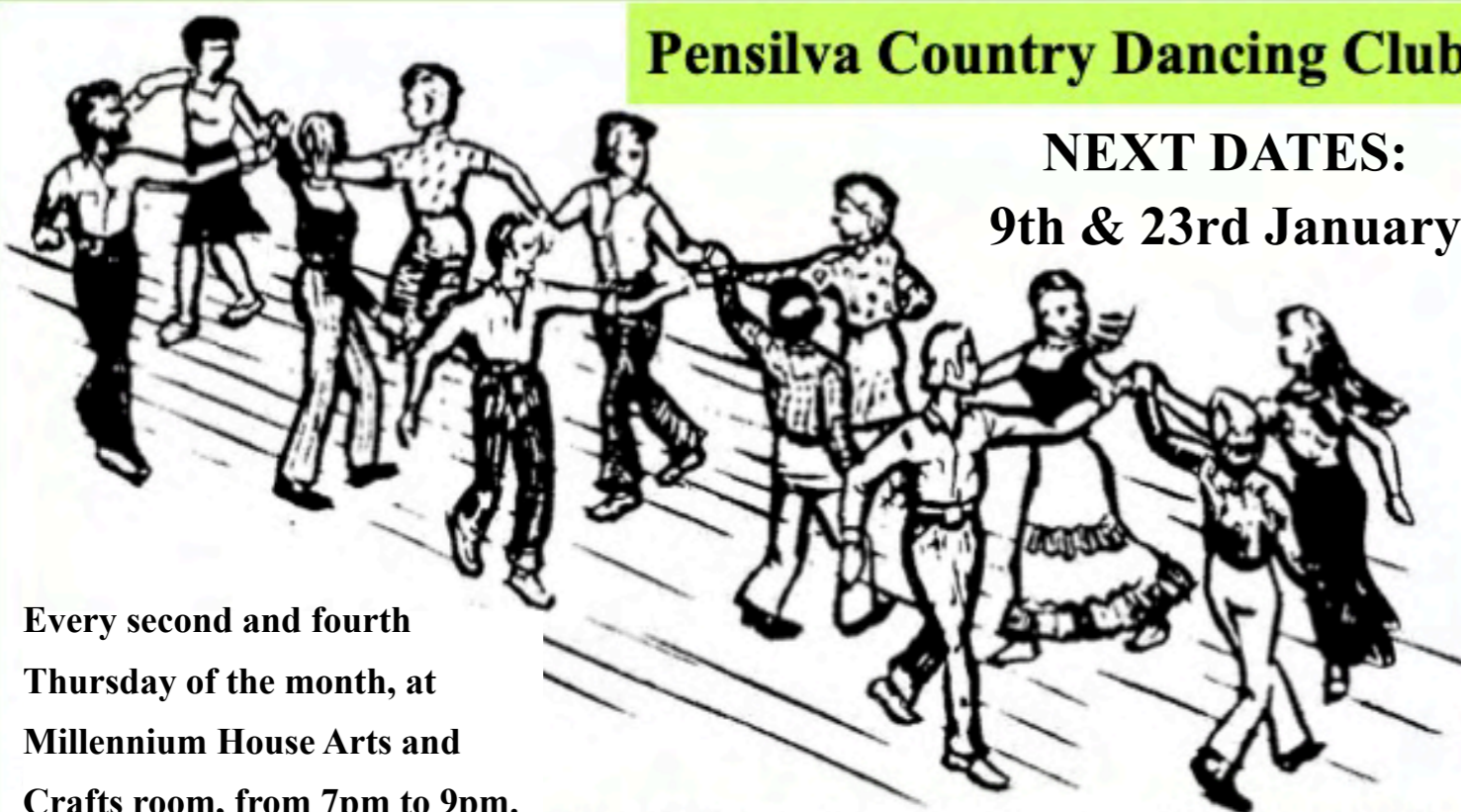
## Pentiddy Community Woodland Volunteer Days 2024/25 Everyone Welcome

Sunday 5th January  
Sunday 2nd February  
11:00 - 15:00

Come share some good company and productive work.  
Improving the woods for all that use it.  
Soup, bread, hot drinks and cake supplied.  
Please bring gloves and hand tools if you have them.  
We have some tools and gloves. No experience needed.

Any questions please call 07989330887, or via the facebook page [mail@pentiddy.co.uk](mailto:mail@pentiddy.co.uk)






**Pensilva Country Dancing Club**

**NEXT DATES:  
9th & 23rd January**

Every second and fourth Thursday of the month, at Millennium House Arts and Crafts room, from 7pm to 9pm.

For information ring Frances 01579 363718



**RVS WEDNESDAY CLUB, PENSILVA**

Meeting in the village hall every 3rd Wednesday of the month. Entry £2 which includes raffle and refreshments, 2-4pm

**February 19<sup>th</sup> - Cornwall Air Ambulance**

**March 19<sup>th</sup> - Ann Hughs playing harp**

Everyone Welcome. For further information please contact:

Cherry Woodhouse (Chairperson) 01579 363674

Jane Hall (Secretary) 01579 363379



**Badminton at Millennium House**

Monday & Tuesday 5pm - 7.30pm - Informal Badminton - £10 per hour per court, call 01579363096

Monday & Tuesday 7.30pm - 9.30pm - Pensilva Badminton Club - £5 per person, contact Richard 01579349324 or Nigel 01579363594

Wednesday 5pm - 10pm - Informal Badminton - £10 per hour per court, call 01579363096

Please bring your own rackets & shuttles or you can rent a racket and shuttles for a small charge.

**MILLENNIUM HOUSE COMMUNITY COFFEE SHOP**

Open **Tuesdays, Wednesdays, and Fridays; 9am to 1pm** (the Post Office is open until 11:30am on these days). We, the volunteers, opened the Coffee Shop in 2017 with the hope of giving something back to the community. The atmosphere is relaxed, making it an ideal place to enjoy meeting up with friends for a cuppa and a chat. A warm welcome is assured. We would like to say a huge "Thank You" for your continued support.

PENSILVA WI would like to invite you to an open evening on

**Wednesday 8th January at 7.15pm**

in the function room of Millennium House when Tony Rea, a contestant on the 2023 series of The Great British Sewing Bee, will be telling us about his time on the programme, and showing us some of the garments he made.

There will be a small charge of £5.00 per person which will include tea/coffee and biscuits, pay on door.

To book your place please contact Alison Willis on 01579 362505 or email gretel1950@gmail.com.



# St. Ive Village Hall, The Cross PL14 3LZ

## HALL HIRE

**£5 an hour**

Includes use of the kitchen and electric (except wall heaters, which are on a £1 coin meter)  
For bookings ring Amanda 077 033 930 70

### Regular Group and Activity Timetable

Group	Date and Time	Contact details
Gardening Club	1 <sup>st</sup> Monday monthly 7.30pm	stivegardeningclub@gmail.com
St. Ive Snooker Club	Mondays and Thursdays 7pm	01579 382315 R. Bunkum
Mobile Post Office	Wednesday 10.30 – 11.30am	
Village Coffee Morning	Wednesday 10.30am – 12	
Methodist Sunday Service	Check timetable in Parish Pump for services	Kathryn or Keith Mutton 01579 382334
Chattermakers Chat and Craft	Thursdays Fortnightly	Kathryn 01579 382334
Fit On the Floor Fitness Class	Tuesdays 7pm to 7.30pm	07597383171 Facebook @jemfitnessliskeard



**St. Ive Village Hall  
The Cross, St. Ive  
PL14 3LZ**

**1st Monday of the month  
7.30pm**

**New members welcome**

Email: [stivegardeningclub@gmail.com](mailto:stivegardeningclub@gmail.com)



St Ive Church would welcome anyone interested in learning to ring the bells.

Practice night every Wednesday  
7:30pm- 8:30pm

Contact:  
Jeanne 363228 or Jenny 389201



## St. Ive Village Hall PL14 3LZ Snooker Club



**Monday and Thursday Evenings**

**7pm**

**Contact Ray Bunkum**

**01579 382315**

### Singing for well-being

Fun singing session All welcome!  
Very simple songs to relax, uplift and connect. No experience needed.

**10-11AM TUESDAYS**

**CRAFT ROOM, MILLENIUM HOUSE  
PENSILVA  
£5/session**



FOR FURTHER INFO, TEL:  
CLARE 01579 382341



# ENERGY ADVICE DROP-IN CORNWALL LOW CARBON ENERGY ADVICE NETWORK



We are a lottery-funded project providing **free, impartial** advice and support for householders across Cornwall who want to improve the energy efficiency of their homes

- We can help with**
- Retrofit & Insulation
  - Solar & Battery Storage
  - Sustainable Heating / Heat Pumps

Chat with our adviser and discover smart, sustainable choices for your home



**Liskeard Library,**  
Barras St, Liskeard PL14 6AB

9:30am - 12:30pm

6 December / 3 January / 7 February / 7  
March / 4 April



Cornwall  
Climate  
Action  
Network



# NEIGHBOURHOOD DEVELOPMENT PLAN FOR ST IVE & PENSILVA



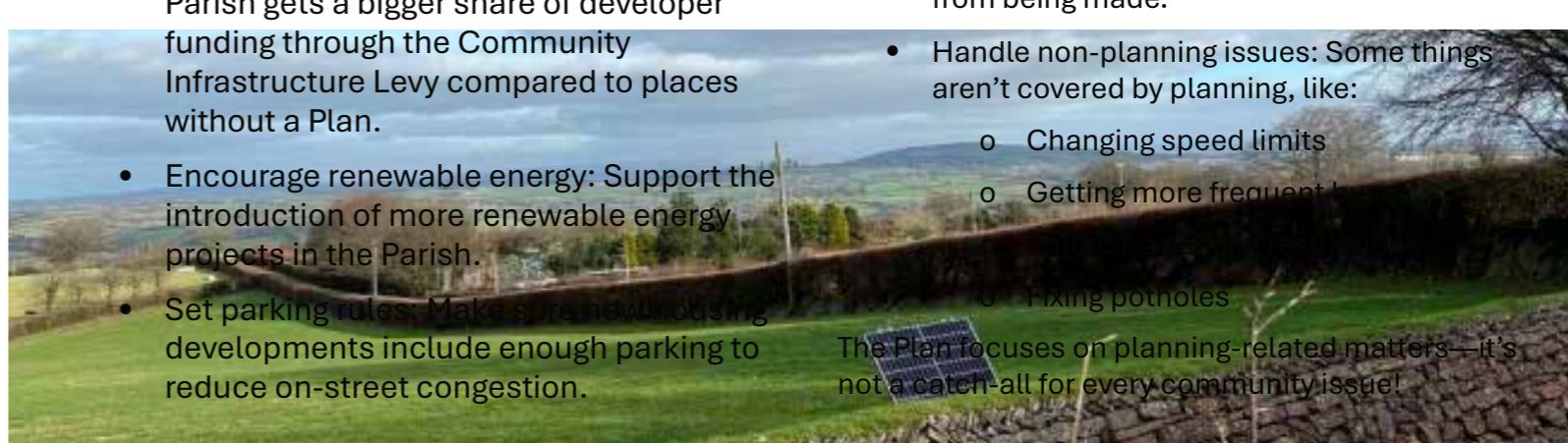
## Online Business Survey and Pensilva Neighbourhood Plan

As we hope you are now all aware, St Ive & Pensilva Parish Council are preparing a Neighbourhood Development Plan for our area. A Neighbourhood Development Plan is a way of giving local people a stronger influence over planning applications decisions as by law the Local Planning Authority (Cornwall Council) will have to take it into account.

We need to ensure that the St Ive & Pensilva Neighbourhood Development Plan represents the interests of the local community, local organisations and local businesses. Therefore, we have been carrying out surveys of local opinion. In the summer of 2024, we collected the opinions of the local community. We now need to have the views of local businesses to help us write planning policies for business and jobs, so a special online business survey has been prepared. It is aimed at anyone who runs a business located in the Parish or who lives in the Parish and runs a business from their home, whether they be a formally registered business or self-employed. So if you fit this criteria very shortly you will receive a letter from us with all the information you need to complete this online business survey for us. We would be very grateful if you could complete this for us, **your views matter.**

- Support housing needs: Help provide new homes, including affordable ones, to meet the community's needs.
- Go against higher-level rules: The Plan has to align with national and Cornwall Council planning policies.
- Shape local planning rules: Create guidelines that reflect the area's unique character, like how new developments should look.
- Protect community treasures: Safeguard important places like Krowij and the playing field that matter to locals.
- Unlock funding opportunities: Help the Parish Council secure money for projects in the Parish.
- Guide housing development: Influence the size, type, and location of new housing in the area.
- Encourage local contributions: Ensure the Parish gets a bigger share of developer funding through the Community Infrastructure Levy compared to places without a Plan.
- Encourage renewable energy: Support the introduction of more renewable energy projects in the Parish.
- Set parking rules: Make sure new housing developments include enough parking to reduce on-street congestion.
- Make impossible demands on developers: It unrealistic or unworkable.
- Change national laws: Things like Building Regulations or Permitted Development Rights are outside its control.
- Repeat existing policies: There's no point duplicating what's already in place.
- Policies - it's about adding local value.
- Reduce housing targets: The number of new homes set by Cornwall Council's Local Plan has to stay as it is.
- Promise specific developments: Unless the Parish Council can pay for them, it can't guarantee that certain projects will happen.
- Handle non-planning issues: Some things aren't covered by planning, like:
  - o Changing speed limits
  - o Getting more frequent bus services
  - o Fixing potholes

## Your Parish Your Plan Your Say!



The Plan focuses on planning-related matters—it's not a catch-all for every community issue!

## Film Club

Our final film of 2024 (can't believe I'm saying that!) was "Last Christmas", an at times funny whilst at other times quite emotional film about Katarina (Kate) who works as an elf in a year-round Christmas store in London. The movie is "Wham packed!" with George Michael inspired music which most of us were probably singing along to. I really enjoyed the film and I hope others did too.

For January we are doing something a bit different. For many living in or near London one of the Christmas/New Year "treats" is to go and see one of the huge London shows, often a musical at this time of year. To join in from afar we are showing the stage musical version of Miss Saigon, a smash hit of many years in the big city. If you can't make it to the theatre itself the next best way of experiencing a show must be by watching on a "big screen" so I hope this will appeal.

Can I remind members that our fees to C-film are increasing as from January and we will need to raise our entrance fee to £4 in order to cover the increase. As yet there is no increase in the renewing membership fee which currently stands at £6. Please check on your membership cards which will indicate when you need to renew.

As usual the Mel bar will be open before and after our film show, buying a drink supports the centre which we all value.

I would like to wish all members a very happy, healthy and prosperous New Year and look forward to seeing you all, and perhaps some new members, during 2025.

For further information, contact Judy: [judy.two@outlook.com](mailto:judy.two@outlook.com) or call 01579 208836 or 078 8817 8739.

**Pensilva Film Club - in association with C-film, part of Creative Kernow**

*Judy*



Pensilva Community Association and C-Film Present



**FRIDAY, JANUARY 17th**  
DOORS OPEN 7PM, FILM STARTS 7:30PM

**MISS SAIGON**

**£4** for C-Film members

Non-members can join on the door for £6, which includes your first film.



Miss Saigon is a sung-through stage musical by Claude-Michel Schönberg and Alain Boublil, with lyrics by Boublil and Richard Maltby Jr. It is based on Giacomo Puccini's 1904 opera Madama Butterfly, and similarly tells the tragic tale of a doomed romance involving an Asian woman abandoned by her American lover.

Musical / Broadway  
2 hours 21 minutes.  
SCAN FOR TRAILER ----->



## FIFTEEN + YEARS OF WILDLIFE WATCHING IN THE PARISH OF ST. IVE

Since moving to the Parish at the end of 2009, I have been photographing and recording the wildlife which I see at my home on the edge of Pensilva on a daily basis. This month I am looking at our commonest owl, which you would have been lucky to see, but may well have heard...

### ...THE TAWNY OWL



Until now, all my articles have only included photos which are our own and taken here. However, for obvious reasons, this bird of the night is difficult to catch without specialist equipment, so I have resorted to using photos from the internet (with appropriate permission of course.) However, I seem to remember a wonderful Pump article by another local resident a few years ago which included photos of young owlets emerging from their nest in a local tree. To illustrate the problem and to prove I have seen them here, the photo to the right shows my attempt to catch a bird at dusk which had turned its back on me!



These owls have brown-grey feathers with large rounded wings which can have a span of up to a metre. The females are larger than the males and weigh approximately the same as a wood pigeon. Because they are usually nocturnal, it is their call which gives away their presence. Theirs is the owl call most closely resembling the "twit twoo" of children's books. The two halves of this call can be quite well separated and are in fact the contact calls of two birds, a male and a female out hunting together. The first half is

the female and the second the male. If you are interested, the British Trust for Ornithology (BTO) web site has some good recordings demonstrating this.

These silent and unseen hunters locate their prey using both their excellent sight *and* excellent hearing. They are able to swoop unheard down onto the woodland floor thanks to the soft edges to their flight feathers which deaden any noise. They feed mainly on mice and voles, but will also take birds, amphibians and even young rabbits. When food is short, they will also eat insects and worms.



Tawny owls usually pair up for life, hunting together and defending their territory of 30 to 50 acres against intruders. They mate in Spring, usually laying two or three eggs in a tree cavity, though they have been observed using old crows' nests or squirrel dreys. It is also possible to buy or make tawny owl boxes which they may choose to use. The eggs hatch about a month later. The young are initially fed in the nest with the parents breaking up the food into increasingly larger pieces as they grow. At about 5 weeks, as the downy first feathers

start to be replaced by adult ones, they will start to explore the area outside the nest in a process known as branching. This is probably the best time to actually see them. As well as the young emerging, the need to keep their young fed during a season of short nights, brings tawny owls out to hunt during the day. By the end of autumn, the owlets will be fully independent and go off to find a mate and a territory of their own.

Tawny owls produce pellets containing all the parts of their prey they have been unable to digest, which they regurgitate. Finding these is a sure sign of a roosting place immediately above it, which may give an indication of where to watch out for them. Although largely woodland birds, tawny owls can also venture into parks and gardens.

Despite being our most common owl, it is estimated that the population of Tawny Owls has fallen by more than a third since the 1970s. The reasons for this are poorly understood and more research is needed, but habitat loss is certainly a factor. As a result of this, in 2015 it was placed on the Amber List of Birds of Conservation Concern.

A couple of weeks ago at dusk, I was lucky enough to hear tawny owl calls very close to the house. Looking out of an upstairs window I saw the caller on the branch of a tree just a few metres away. So keep your eyes and ears open and you will almost certainly hear them and may even be lucky enough to glimpse one!

## The Elder Rider Motorcycle Group (est 2016)

We are first and foremost a social meeting point for older motorcyclists, both male and female, aged 55+ .There are no rules and regulations, subscriptions or AGM`s and you buy your own tea and coffee!



We meet every Wednesday at approx. 1100 hr at the Chequered Flag Cafe alongside the A38, one mile east of Liskeard. Although we meet throughout the year we do not do ice, snow or heavy rain (unless we get caught out on a ride out). We ride for pleasure not pain. There is no requirement to go out on a run. You do what suits you.

We have an association with the MZ Motorcycle Group from St Austell who have a ride out once a month on a Sunday, details of which I will email to the group close to the time.

Our ages range from late 50s to mid 80s, and the bikes from 125 to 1400cc include vintage and modern.

Your privacy will always be respected and any emails I send to the group will be under the cover of "blind carbon copies".

If you would like any further details about the group please feel free to email me at [elderrider@yahoo.com](mailto:elderrider@yahoo.com) or call on 07719 695222. I live in St Ive.

We look forward to meeting you in the near future! Regards,

*John*



## Update on Aid for Ukraine

It has been an exceptional year and a busy month for the Nightingales team, driving their 9th second hand 4 x 4 vehicle filled with aid and Xmas gifts to Ukraine. This does not include the 3 van loads of aid which were driven earlier in the year to Koridor UA; our partners in Prague.

With your help, kindness and support, the team were able to take heartwarming Christmas Gifts to the Malyatko Childrens Rehabilitation Centre in Uzhhorod, where they delivered boxes of donated presents for the children. After leaving the Centre on the 8<sup>th</sup> of December the team then drove the vehicle to a collection point where it was passed on to a medical brigade in Ukraine.

Within hours, the Ukrainian medical teams sent an online video expressing their heartfelt thanks for the vehicle, as it had already been put to good use, saving a wounded soldiers life.

This serves as a raw and powerful reminder of why we pour our hearts into this cause. Seeing the gratitude on the faces of soldiers and medical teams and knowing that our work is making a vital difference, makes every effort worthwhile. It's not just about delivering aid; it's about protecting what is most precious, human life itself.

Our collective community effort continues to make a difference. Your support this year has changed lives and the team would like to express their heartfelt gratitude to you for being part of this journey. Every act of kindness counts and continues to spread hope and faith for a better tomorrow and most importantly save lives.

My heart is filled with gratitude for all the generosity extended to this cause. May the light of grace continue to burn brightly for those in need. Wishing you all a peaceful, healthy and happy New Year. God bless.

*Janey*

**Nightingales UK are currently asking for donations of the following Medical Aid:**

### Equipment

- Collars
- Dressings/Bandages
- Splints
- Syringes
- Crutches
- Eye Wash/Eye Dressings
- Wheelchairs
- Inhalers
- Walking Frames



- Blood Pressure Monitors
- Gauze
- Blood Sugar Testing Kits
- Plasters
- Dressings for Burns/Burns Gel
- Wound Closure Steri-Strips
- Sutures
- Procedure Packs
- First Aid Kits
- Blood Sugar Testing Kits
- Scissors
- Syringes
- Feeding Tubes

### Aid to Support the Paramedics Providing Front Line Response

- Waterproof boots and Winter Jackets
- Torches
- Power banks to charge phones etc
- Metal Detectors

### Any Over the Counter Medicines and Unused In date Medication with the Exception of Controlled Drugs

- Paracetamol
- Ibuprofen
- Immodium/Dioralyte
- Decongestant Nasal Sprays
- Vicks/Strepsils
- Disinfectants
- Antihistamines e.g. Piriton, Loratadine, Cetirizine

### Humanitarian Aid:

- Childrens Nappies
- Baby foods/wet wipes
- Childrens Mixtures i.e. Calpol/Cough medicines
- Infant formula (6 months)
- Childrens Purees (Vegetable, fruit, meat)
- Childrens/Adults Hygiene - Shampoo, Soaps, toothpaste, toothbrushes
- Feeding Bottles
- Dummies/teething rings
- Adult incontinence pads
  - Disposable Nappies
  - Adult Shampoo, Soap, Toothpaste, Toothbrushes
- Washing powder
- Washing up liquid
- Toilet paper
- Sanitary Pads
- Tin Canned Food (Vegetable, Meat, Fruit)
  - Cereals, Pasta, sugar, Tea and Coffee

# St John's Mission Church

Refreshments served before and after services

## Services for January 2025

Sunday	5 <sup>th</sup>	11.00 am	Holy Communion
Sunday	12 <sup>th</sup>	11.00 am	Morning Worship
Sunday	19 <sup>th</sup>	11.00 am	Morning Worship
Sunday	26 <sup>th</sup>	11.00 am	Morning Worship
Thursdays		10.00 am	Morning Prayer Fellowship

## JANUARY EVENTS *Please see posters for full details*

Friday	3 <sup>rd</sup>	2.30 pm	Afternoon Tea at Penharget Cottage, PL14 5RJ Raising funds for <i>St Petrocs &amp; Action for Children</i>
Wednesday	15 <sup>th</sup>	3.00 pm	Good Grief Café
Thursday	23 <sup>rd</sup>	2.00 - 4.00 pm	Memory Café
Tuesday	28 <sup>th</sup>	2.00 - 4.00 pm	Stitch, Knit & Natter

*For further details or if you know of any illness or need in the village, please call Geoff, 362698 or Frances, 363718  
Please put prayer requests in the box. St John's is open daily 10.00am - 3.00pm for personal prayer & reflection*

# AFTERNOON TEA

*Penharget Cottage  
Pensilva PL14 5RJ*



**Friday 3<sup>rd</sup> January**  
**2.30 pm**

**Raising funds for St Petrocs & Action for Children**



**Bring & Buy Stall**  
**Raffle**

# St John's Mission Church Pensilva Good Grief Cafe



We can grieve for many reasons:  
 the death of a friend or relative;  
 the diagnosis of a friend or relative with dementia or a terminal illness;  
 loss of mobility or driving licence;  
 closure of your place of worship;  
 closure of a support group;  
 the loss or illness of a pet;  
 the loss of freedom;  
 the loss of a job;  
 homelessness;  
 the loss of stability in society.

The Good Grief Cafe is for anyone who is grieving for any reason. Come for company, for friendship. Eat cake, drink tea and coffee.

Chat if you want to, or just be there.  
 Everyone is welcome.

**Wednesday 15<sup>th</sup> January**  
**3.00 pm**

*For further information contact Geoff 01579 362698*

# PENSILVA MEMORY CAFE

*If you have memory problems or you are a carer for somebody who does, come and join us at St John's Mission Church for a cuppa and some cake. We'd love to see you and hope that you will enjoy yourself.*

*Guest Speakers*  
*Activities* 2.00 to 4.00 pm  
*Quizzes*  
*Games* **Thursday 23<sup>rd</sup> January**  
 Contact Geoff on 01579 362698



# Unity Methodist Church



Sunday 5th January 11.15am - United Service at St Ive Parish Church.

Sunday 12th January at 4pm - The United Covenant Service will be at St Ive Village Hall led by Rev Stuart Reed with Communion

Sunday 19th January 11.15am - United Service at St Ive Parish.

Sunday 26th January 10.30am - United Service at St Ive Village Hall 10.30am led by Marguerite Smith

The Callington and St Ive Wesley Guild will meet in January at Callington Methodist Church 7.30pm. This month's meeting is on Monday 6th January when the guest speaker will be one of our new Ministers Rev Stuart Reed on "The man behind the collar". Then on Monday 20th January we will be hosting an "any questions" evening. All welcome

The Chattermakers craft group are always ready to welcome new people to come and chat, craft and have a good evening. They resume their meeting on Thursday 9th and then Thursday 23rd January 7.30pm at St Ive Village Hall. For more details please ring Kathryn on 01579 382334

## St Ive Church

Jan 5th	Morning Service	11:15am in Church
Jan 12th	Chapel Service	10:30am in the village hall
Jan 19th	Holy Communion	11:15am in Church
Jan 26th	Chapel Service	10:30am in the village hall

**Tuesday  
28<sup>th</sup>  
January**

**St John's  
Mission Church  
Pensilva**

**on the  
last Tuesday  
of the month**

**2.00  
to  
4.00 pm**

**Contact Kathleen  
01579 363686**

# stitch knit and natter

**Do you enjoy stitching,  
knitting, crocheting?**

Join our friendly knit and natter group.  
Come and meet new friends and swap tips  
and ideas - all ages and abilities welcome!

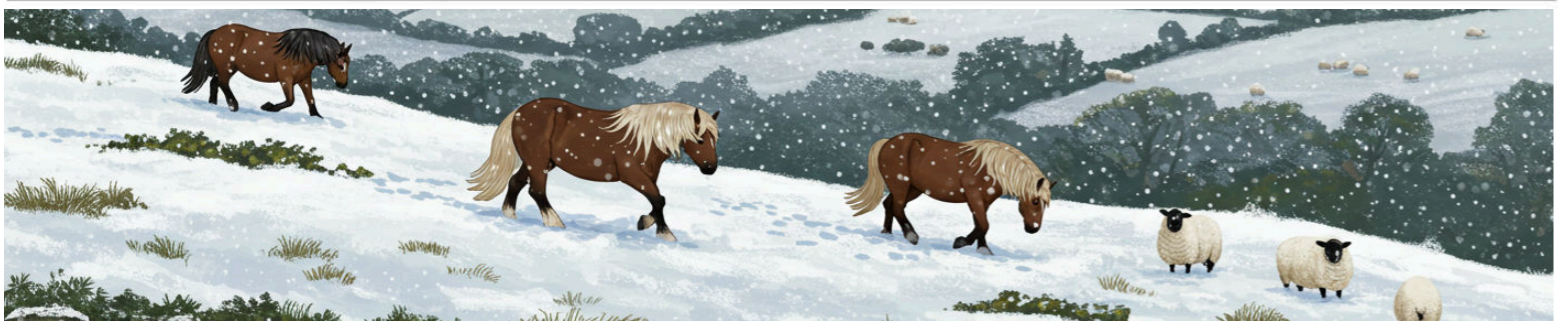
Drop-in!

There is no charge  
for this activity but there  
is a Donation Box if you  
would like to make a  
cash contribution.

## MELODI LISKERRET

- A mixed group, singing a variety of well known numbers including Folk & Cornish songs.
- Local to you!
- Weekly rehearsals in St. Ive – Gorfenna, PL14 3LX
- Friendly informal rehearsals with a tea break and biscuits!!
- **Free one-to-one professional singing tuition within a few weeks of joining!!**

**For more information, please contact Gerald, secretary, on 01579 363881 or email: [charaton@btinternet.com](mailto:charaton@btinternet.com)**





It's Panto time again.

Liskeard Lions present

# "FRANKENSTEIN"

Friday 24<sup>th</sup> January

The Public Hall, Liskeard.

Free to the over 60s.

Free Bus picking up at 6pm from

Glen Park

Pensilva Stores and

The Cross, Pensilva.

Also picking up at 6.10pm from

St Ive Village Car Park.

To book ring,

Jean Hoare 01579 362531 or

07494 894330.



We need your **submissions**: news, announcements, posters for local events, even full articles if you think the community would find it interesting!

We need **photos** for the front cover. Taken a nice photo recently of a local event or somewhere in the parish and happy for us to use it? Email me, please!

We need **advertisers** to pay for the printing. If you're a local business, know that the Parish Pump is the first place most people turn to to find your services!

We need **volunteers** to deliver. If you don't currently have the pump delivered and could spare an hour or so a month, we'd love your help.

Either way, it starts with an email: [stiveparishpump@gmail.com](mailto:stiveparishpump@gmail.com)

Thank you for all your support, especially our advertisers, without whom the Parish Pump would not exist.

## HEEL2TOE

My name is Penny Jordan Dip FH; MCFHP; MAFHP, and a Foot Health Practitioner fully qualified to Diploma level. I am also fully insured and DBS checked.

If you need toenails cut and filed, you are a Diabetic, have Callus formation (hard skin), fungal infection of your toenails or anything regarding your feet that worry you.

I can arrange a home visit by appointment so your feet can be looked after in the comfort of your own home.

Please contact me :-

**07746 926146**



## Westwood Garden Maintenance

*Anthony Watts*

Grass cutting, Clearance,  
Weeding, Turfing, Hedge Cutting,  
Patio Cleaning, Planting  
**FREE ESTIMATES**

01579 362019

07952 094472

[www.westwoodgm.co.uk](http://www.westwoodgm.co.uk)



# PERI PILATES



**New beginners/intermediate mat Pilates class**

Starting Monday February 10<sup>th</sup> at 9.15am,  
Millenium House, Pensilva

**Classes are £7 PAYGbookable weekly**

**Please contact Sarah at [SMJLODGE@HOTMAIL.CO.UK](mailto:SMJLODGE@HOTMAIL.CO.UK)**

You will need a mat, a water bottle and a smile

Facebook PeriPilates

## Colin Swinburne Electrical Services



All aspects of domestic and commercial electrical work.

Inspection and testing (EICRs), fault finding, new installations, rewires, consumer unit replacement, additional sockets, lighting upgrades, garden power and lighting, extractor fans and more.

Local Electrician in Pensilva. Free advice and quotes.

4.9 ★★★★★ Google reviews

[CSES@btinternet.com](mailto:CSES@btinternet.com) • 07974 499138



# Oak Beauty

## By Anya

Massage,  
pedicures, manicures  
including gel polish,  
builder gel,  
eyelash lifts and tints,  
eyebrows  
and much more!



**07944 072902**



## Group Travel

Day Trips & Coach Holidays

Enterprise Park, Midway Road, Bodmin, Cornwall PL312FQ Tel: 01208 77989

### Coach Excursions & Tours 2025

29th March	Stitching & Craft Show, Westpoint
8th April	Geevor Tin Mine & Lands End
6th May	Enys Garden, Bluebells
13th-19th May	Melrose & the Scottish Borders
27th May	Thorpe Park (book early for tickets)
11th June	Marwood Hill Gardens, Barnstaple
24th June	Mount Edgecombe
3rd July	Tiverton Canal Barge Trip
14th-18th July	Visit Chester
29th July	Port Eliot Estate with Kernow Mill
13th August	Plymouth Fireworks Championships

Visit our website for all our excursions & tours.

Call: 01208 77989 for bookings and brochure  
website: [www.grouptravelcoachhire.co.uk](http://www.grouptravelcoachhire.co.uk)  
email: [grouptravelcornwall@btconnect.com](mailto:grouptravelcornwall@btconnect.com)

### Bodmin MOT Centre

01208 77989

- Garage Services
- MOT Testing Station
- Classes 4, 5 & 7
- Servicing & Repairs
- High Vehicles & Motorhomes
- Brake Test & Headlight Alignment
- Pre MOT Inspections
- Annual & Interim Vehicle Servicing
- Commercial interim inspections available including brakes and lights
- Helping you stay compliant

Bodmin MOT Centre  
Enterprise Park, Midway Road,  
Bodmin, Cornwall PL312FQ





**Right-on**   
**Plumbing &**  
**Maintenance**

*Gareth Haimes*

**Tel: 07947353682**



KV Accounting Solutions

ACCA

**Local Accountant offering fixed fee accounting services**

With over 25 years experience, I am a fully qualified, friendly, local accountant

- |   |   |
|---|---|
| <ul style="list-style-type: none"> <li>✓ Annual Accounts for Sole Traders and Partnerships</li> <li>✓ Book Keeping &amp; Payroll</li> <li>✓ Personal Tax Planning</li> <li>✓ Company Accounts</li> <li>✓ Business Support &amp; Advice</li> </ul> | <ul style="list-style-type: none"> <li>✓ Self Assessment tax returns</li> <li>✓ iXBRL tax filing</li> <li>✓ Tax investigation Fees Insurance</li> <li>✓ Company Secretarial work</li> <li>✓ Tax calculations for Sole Traders and Partnerships</li> </ul> |
|---|---|

Kate Vaughnley FCCA - Chartered Certified Accountant  
 Website : [www.kvaccountingsolutions.co.uk](http://www.kvaccountingsolutions.co.uk) or Email : [katevaughnley@gmail.com](mailto:katevaughnley@gmail.com)  
 Telephone : 01579 532622 / 07725 004152

**KILN DRIED  
 FIREWOOD**

MATTHEW  
 07884 112692



**Window Cleaner**

Also any upvc cleaned  
 i.e. fascias, gutters, etc.

**gutters cleared & unblocked**

Please phone Rob  
 01579 384435  
 079 9099 6886

**Window Cleaner**

**Matt's Windows**

**Repair of Windows, Doors  
 & Glass Unit Replacement**

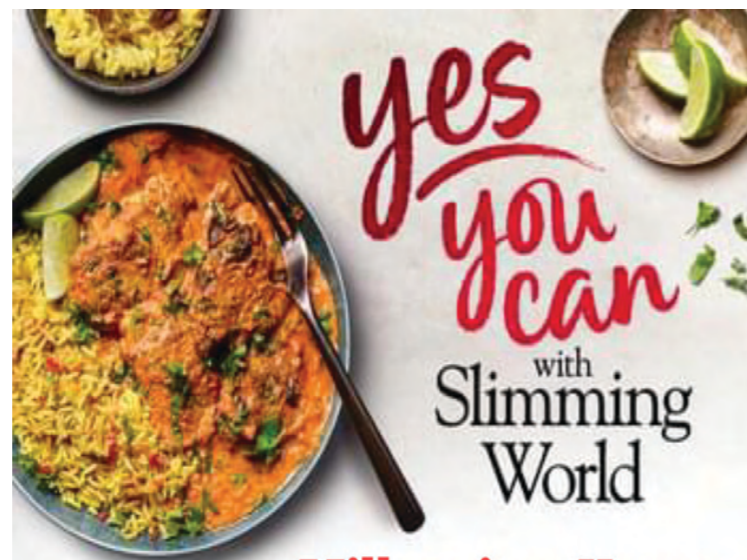
Making draughty windows great again!

**T: 01579 641228**  
**M: 07533 387368**

# SEASONED LOGS



Telephone Jonathan  
Mobile 07966  
070725 or  
01579 363157



**Millennium House**

**Friday 5:30pm**

**Saturday 8am & 9:30am**

**Hayley 07966370233**

slimmingworld.co.uk 

**MPM**  
Domestic Electrical  
Property Maintenance  
Interior & Exterior Work  
Carpentry :: Decking  
Kitchens :: Bathrooms  
Wall & Floor Tiling  
General Plumbing

---

**MCCARTHY PROPERTY MAINTENANCE**

Electrical Safety  
Register  
ELECTSA + ECA  
incorporating  
Certification Ltd

HIGHLY REGARDED LOCAL BUILDER  
COMPETITIVELY PRICED  
COVERING THE SOUTH WEST

Contact Dominic

07968 599 675  
01579 362 945

info@mccarthypropertymaintenance.co.uk

[www.mccarthypropertymaintenance.co.uk](http://www.mccarthypropertymaintenance.co.uk)

## Debbie Hicks - Counselling and Psychotherapy

*Caring, confidential counselling for all.*

*I work in a therapeutic relationship to  
help you understand yourself better.*

*I offer a warm, approachable, relaxed  
environment for you to untangle your  
thoughts and emotions.*

[www.debbiehickscounselling.co.uk](http://www.debbiehickscounselling.co.uk)

Email: [debbiehicks10@gmail.com](mailto:debbiehicks10@gmail.com)

**07851 133782**

More info on my  
website or by  
contacting me.



# J. J. Child

Plumbing and heating engineer.  
Oil appliance service,  
repair and breakdowns.

**40 years' experience.**

Call John:  
01579 362336  
or  
07837 921086



## NICOLA GREENE

BSc (hons) Podiatry MChs

HPC Registered Chiropodist/Podiatrist

**Home Visit Practice treating all  
your foot care needs:**

- Nail Cutting
- Corns and Calluses
- Thickened Nails
- Dry Cracked Skin
- Verrucae
- Foot Pain
- Diabetic Foot Assessments
- Wound Care

T: 01579 590027  
M: 07786164205  
E: [nicki\\_greene@yahoo.com](mailto:nicki_greene@yahoo.com)



## KERNOW ARCHITECTURAL SERVICES

- Architectural Design
- Planning Permission
- Class Q Specialists
- Building Regulations
- Project Management
- Building Conservation


[www.kernowarchitectural.co.uk](http://www.kernowarchitectural.co.uk)  
[enquiries@kernowarchitectural.co.uk](mailto:enquiries@kernowarchitectural.co.uk)

**Telephone: 07398736726**

Parade House, The Parade, Liskeard, Cornwall PL146AH

# PensilvaCars

01579 363516

- ✓ MOTs Class 4
- ✓ Service
- ✓ Repair
- ✓ Tyres
- ✓ FREE Courtesy Car
- ✓ Car & Van Sales
- ✓ Diagnostics
- ✓ Air Conditioning
- ✓ 

We have offered a supply, fit & balance of tyre service for 10 years at competitive prices.

Most of our tyres can be supplied the same day.

LOCAL RECOVERY £45.00  
[www.pensilvacars.co.uk](http://www.pensilvacars.co.uk)  
[pensilvacars@hotmail.co.uk](mailto:pensilvacars@hotmail.co.uk)

We can service and repair your car to manufacturer specification, keeping your dealer warranty without main dealer expense.



## NC TREE SURGERY



Expertise  
in all kinds of  
tree work

- Tree felling, dismantling & pruning
- Hedge Cutting
- High quality work
- Left clean and tidy
- Full removal and chipping available
- Fully qualified and insured

Please call or email  
Neil Cloake for a quote

City & Guilds

Qualified and insured local tree surgeon

NPTC  
Qualified



**07855 461 483**



[nctreesurgery@yahoo.com](mailto:nctreesurgery@yahoo.com)

## Carpentry/Joinery & Property Maintenance



City & Guilds  
Advanced craft  
Qualified



### 35 Years' Experience

All aspects of Carpentry undertaken including:

Bespoke Carpentry & Joinery  
Kitchen Installations

Doors, Partitions, Skirtings, Architraves, Shelving  
Timber Floors renewed/repared, Laminate Floors fitted

Timber Windows repaired including 'Sliding Sash'

Plus General Property Maintenance:

Including Painting/Tiling and much more!

Fully insured  
(Including Public & Product Liability)

07397 153792    trystanphillips carpentry@gmail.com    01579 363150



# GENERAL GARDEN & HOUSE MAINTENANCE

**NO JOB TOO SMALL**

Call to discuss your requirements.  
**NO OBLIGATION** quotes given.

One off jobs or regular work catered for.

Here are some examples...

### OUTSIDE

MOWING

HEDGE CUTTING

FENCE PAINTING

BOARDER WEEDING

PATIOS & DRIVES

CLEANED

### INSIDE

WINDOWS CLEANED  
INSIDE & OUT.

PAINTING

CLEANING

SHOPPING

IRONING

**CALL ANDREW CARLIN**

now on:

**07407 323888**

Thank you.

*PAUL ALLEN*

*PAINTER & DECORATOR*

45 years + Experience

City & Guilds Advanced Qualification

Internal & external work

All paint finishes

All types wallpapering

Minor repairs undertaken

Fully insured

No job too small or too large

Quality assured & guaranteed

I provide a professional service at a reasonable cost

Please contact me for a free estimate

Mobile: 07548 941437

Email: paul.allen300@btinternet.com

## Muststep Podiatry



Routine Footcare, Nail Reconstruction, Nail Surgery,  
Fungal Nail Treatment, Verruca Treatment,  
Specialist Biomechanics and Orthotics, Home  
Visits/Nursing Homes, Footcare Advice &  
Preventative Care for Low-Risk Patients.

Contact **07522 577 012**

West Looe,  
PL13 2HA

## Looe Ear Care



Clinic £50 both ears, Home visits from £55, Special  
rates for Nursing homes. Thorough eardrum and  
canal inspection.

Safe microsuction for ear wax removal, ear  
irrigation available when suitable. Includes expert  
ear health advice.

Contact **07899 548 979**

# Pensilva Stores

**Amazing Value**

**Premier**  
a great deal more from your local store  
Mon-Sat. 7:00 AM. - 9:30 PM.  
Sunday 8.00 AM. - 9:30 PM.

- ✓ Fantastic Special Offers every month!!! (See store leaflets)
- ✓ Come and Check out our great deals on Wine, Beer and Spirits
- ✓ Local Produce: Homemade Butter and Clotted Cream, Meat from our local butcher
- ✓ Cornish Fresh Fruit and Vegetables
- ✓ Fresh Bread, Pasties and Cakes
- ✓ Take Away Coffee, tea and hot chocolate
- ✓ Newspapers and Magazines, Greeting Cards
- ✓ Paypoint, Lottery

**\* Free to use ATM \***  
**\* Card Payment \***

*Friendly Staff + Service with a Smile !!!*

**Pensilva Stores is a family run business who have been serving local people and visitors for more than 21 years.**

Higher Road, Pensilva, Liskeard, Cornwall PL14 5NQ

Tel: 01579 362547



## Pensilva & St Ive Post Office Service

**Pensilva:** Through the coffee shop on the 1<sup>st</sup> floor of Millennium House

**Tuesdays:** 9 to 11:30am

**Wednesdays:** 9 to 11:30am

**Fridays:** 9 to 11:30am

**The Millennium House  
coffee shop is also open on  
these mornings.**

**St Ive:** At St Ive Village Hall

**Wednesdays:** 10:30 to 11:30am

**Coincides with the St Ive  
Village Hall Coffee Morning**