

FEBRUARY 2025

THE PARISH PUMP

NEWSLETTER FOR THE PARISH OF PENSILVA AND ST IVE



ISSUE NO.515



Let it snow, let it snow! Rudy, by the cemetery gates; photo courtesy of Louise Littlewood

DISCLAIMER

The articles appearing in this magazine do not necessarily represent the views of the Parish Council nor of the Parish Pump Editor.

Parish Councillors Telephone List

| | | | |
|-------------------------|---------------|----------------|---------------|
| Alan Moss | 01579 362064 | Marlene Carr | 01579 362919 |
| Rosemary Farley | 01579 384810 | Martin Corney | 01579 382450 |
| Tony Hodson | 079 7353 6964 | Nigel Gisby | 01579 363096 |
| Paul Mann (vice chair) | 01579 363757 | Nigel Libby | 079 6889 1814 |
| Ivor Vaughan | 079 7993 4604 | Patricia Steer | 01579 363096 |
| James Bruce | 074 1119 2645 | Craig Vaughley | 01579 364083 |
| Steve Willis (chairman) | 01579 363096 | | |

Your Cornwall Councillor is Phil Seeva - 07746 815302 cllr.phil.seeva@cornwall.gov.uk

Meetings of St Ive Parish Council

Meetings are usually held on the second Monday of every month, except August and December when no meeting is held. Please see the website or notice board for meeting dates, agendas, and minutes.

<https://st-ive-parishcouncil.gov.uk/minutes-agendas/>



Police Community Neighbourhood Office

Your Community Support Officer is PCSO Steve Edser 30173

Email: CIOSNBMLLST@devonandcornwall.pnn.police.uk

To report a crime call 101 or go to www.devon-cornwall.police.uk
In an emergency call 999

Contact Details for St Ive Parish Council and Millennium House

Address for correspondence:
Millennium House, Century Square, Pensilva PL14 5NF

General Parish matters should be raised initially with the Parish Clerk, Jenny Hoskin, who will present them to the Parish Council 01579 363096, email: stiveparish@btconnect.com

For finance matters for the Parish and Millennium House, contact John Body 01579 362102, email: millenniumhouseadmin@btconnect.com

Millennium House enquiries and reservations to Vanessa 01579 363096 email: ness.mhouse@gmail.com

Parish Pump Submissions

Via email only to stiveparishpump@gmail.com

The deadline for submissions is the 18th of the month. Please email your text submissions directly in the email body, and attach any images. Full, half, or quarter page poster designs can be sent as JPG, PNG, or PDF files.

Advertising Costs

Please note that all advertising must be paid for prior to publication. Two months free when purchasing for a year, and the cost can be spread over quarterly payments.

Quarter page: £10 per month, or £100 for 12 months

Half page: £20 per month, or £200 for 12 months

Full page: £33 per month, or £330 for 12 months

(All prices are inclusive of VAT)

Letter from The Editor

Firstly, apologies for the lateness of last month's pump; a combination of seasonal holidays and staff absences meant we couldn't get it printed on time, and the 25th anniversary event for the All Being Well gym that was featured on the cover came and went before you even had your copy. Hopefully this issue will be with you in time for all the exciting stuff that's happening this month.

It's been a curious start to the year. As snow fell on Pensilva (and as is tradition now, someone crashed on Church Hill), our neighbouring counties flooded, while fires of apocalyptic proportions spread across California. Fires... In winter! The number of deaths was thankfully low, but thousands of homes were destroyed, and the cost of damage is estimated at an eye-watering \$150 billion. Insurance will pay out this time, but they're already seeing fire, flood, and hurricane damage excluded from future policies—or just no coverage offered at all. Here in the UK, we have a re-insurance scheme ("Flood Re") run by the government for flood protection; that means the insurers have to insure themselves against flood risk.

As I write this, we've had a week of glorious spring-like sun, so I took the opportunity to plant some garlic. It's probably the wrong time, but if the last few years have taught me anything it's that there's no longer a right time, and the advice on the back of seed packets belongs in the bin (I do of course mean the *recycling bin*; must do your bit to save the planet!)

We do not have a stable climate anymore.

You probably saw in the news that 2024 was the first to breach the important 1.5C threshold. That threshold was set at the Paris Climate Agreement in 2016, when the average was a mere 1C above the baseline. The world agreed 1.5C was the danger zone, but here we are, already there. Even worse, the warming isn't slowing down—it's speeding up.

What the news might not have told you is that over the past three years, the rate of increase of that average temperature has been 0.16C per

year. 2023 was supposed to be a peak, because of the natural El Nino/La Nino warming and cooling cycles: the rate of increase should now be levelling off again, or even cooling us back to perhaps 1.3C. But it's not, and no one has the slightest clue why.

February might bring snow, or it might bring balmy double digits every day. It's on us to be ready for whatever comes. That's resilience.

Speaking of which: now is a good time to check your emergency plans. What would do you if you were snowed in for a week, unable to leave the house and the village was isolated? What if there was an extended power cut? These kind of emergencies aren't unheard of. Do you have a small battery or solar panel to charge your phone?

At a minimum, it's recommended that you store enough water for your family for three days. That's roughly 5 litres per person, per day. You can refill old cola bottles with tap water, and they'll keep for a few months. Cycle through them to ensure you always have a fresh supply, and keep some purification tablets on hand if you're worried.

And for those of you who are already struggling with the daily essentials, I'd encourage you to reach out to Janey Bryson who now runs the local food hub (amongst many other things, since she's an absolute legend). There's no shame in asking for help when needed.

The truth is that we're always one catastrophic failure away from the end of it all—the bleakness of winter just makes us feel it all the more. Perhaps that's a good thing: it reminds us to appreciate the days we do have.

We may be living in a time of unpredictability, but we're not helpless. Check your supplies, make a plan, and let's look out for each other. These challenges might feel overwhelming, but with resilience, a sense of community, and a dash of Cornish stubbornness, we'll weather whatever comes our way.

James

Chairman's Column

Can you believe it - February already!! It doesn't seem five minutes since we were pulling crackers and wearing silly hats - now it's Valentine's Day next stop. As I write this it's a glorious day and whilst walking the dogs this morning, it would have been easy to think that winter was over and I was enjoying the first day of Spring. Whilst we do not suffer the worst of the weather that others further north must endure (including our poor cousins "across the pond"), no doubt by the time this article appears, the weather may well have taken a turn for the worse and we're back in winter once more.

The Parish Council is now back to work after the Christmas recess and one of the topics discussed recently was gritting for the roads and pavements of both Pensilva and St Ive. As you will be aware, there are a number of salt bins around the villages which are there for localised treatment of problem stretches. However, it was noted that some residents are perhaps unaware of the procedure when it comes to using the grit/salt mixture. The contents of the box are for use on the roads and pavements ONLY and not for use on paths and driveways of individual houses. Residents are welcome to use the grit outside their homes (and those of neighbours should they not be able to manage the job themselves) but the trick is to use the MINIMUM amount to spread over the surface. We heard stories of residents laying it on the surface inches deep which not only uses up resources (which are by no means cheap) but will not do the job any better. So please, if you are availing yourself of the material, just think about others who will need a share and just use it correctly by spreading it sparingly. Although there are a number of bins in the village, the Parish Council have taken the decision to obtain a few more for siting at vulnerable locations including one more for St Ive. Hopefully, we can keep the numbers of accidents caused by slipping to an absolute minimum - as I've said in the past - hospital food is not Cordon Bleu!!

Talking of hospitals, you will have seen no doubt that our electric community transport vehicle is now back from the menders and carrying out its duties effectively once again, taking those who need it to hospital appointments and shopping trips. This is a very well used service so if you know you're going to need it, get yourself booked in as soon as you know your date and time.

Hopefully, by the time you're reading my March report, we will have turned the corner weather-wise and looking forward to some pleasant Spring days. Until then, take care.

Steve

Millennium House

Hi Parish Pump Readers! A few snow days graced us last month and though it looked wonderful and was a joy to play in, it did what it does best and put a halt on activities. Though Spring will not be springing until March, let's hope for a pre-spring feeling this month.

This February at Millennium House we have ...

Saturday 1st - Slimming World with Hayley at either 8am or 9.30am weekly! Pensilva Football club will be kicking off at 2.30pm. Come along and support them and you can pop into the bar from 2pm.

Sunday 2nd - Pensilva Market Day from 11am to 2pm. We will also be joined by a member of Community Energy Plus who will be on hand to give you advice and smart, sustainable choices for your home!

Monday 3rd - MIMS gentle exercise group welcomes you to join them from 10.30am weekly. Laura welcomes you onto the mat with Laura Louise yoga from 5.30pm weekly. Don't forget to book this at millenniumhouse.org.uk/yoga. Pensilva Badminton will be swinging into action from 7.30pm - 9.30pm weekly!

Tuesday 4th - Clare welcomes you to join Singing for Wellbeing weekly from 10am to 11am. For more info contact 01579382341. You can join Pensilva Badminton from 7.30pm or The Westernairs and play a little tune from 7.30pm weekly. They welcome new players. Contact Sue for more info at susanne.daniel@btconnect.com

Wednesday 5th - Coach James will be ready for you to join Kixx and get your little ones super active! Contact jamesurrie@kixx.org.uk for more info or to book. Join Natalie at Sing & Sign weekly during term times with your little ones. For more info or to book contact nataliecole@singandsign.co.uk. NHS Blood Donors will be in attendance today, so expect a busy car park please, people will be driving in to give blood to save lives! We have partnered up with Pensilva School to get a Table Tennis Club going for the children. It is held every Wednesday from 3.30pm to 4.15pm. Please book your child in with Pensilva School!

Thursday 6th - Tammy welcomes you to join the Baby & Toddler group weekly from 9.15am to 11.15am during term time. Laura will be ready for you on the mat for Yoga from 10am to 11am weekly. Don't forget to book on the above link. The ladies of Walking Netball welcome new members to come along and join in the light hearted fun of socialising and keeping active weekly from 4pm, £2 per person! Meet Ron on a different mat for Aikido weekly from 7.30pm.

Friday 7th - get creative weekly with Penmill from 10am to 1.30pm and experience a friendly social

atmosphere where you can share your inner creativity and work with those around you. Currently it works out to be £15 per person per month. The more members they have, the less the fee will be! You are welcome to pop along and poke your head in to see what it is all about. Hayley welcomes you to join Slimming World weekly from 5.30pm.

Monday 10th - NEW Peri Pilates class with Sarah weekly from 9.15am to 10.15am. £7 per class, to book and for more info contact smjlodge@hotmail.co.uk No matter your level, Sarah welcomes you all!

Wednesday 12th - Liskeard Super 1's Cricket will be getting into the game weekly from 5pm to 6pm. Join Pensilva W.I. for their monthly meeting from 7pm.

Thursday 13th - Dance your way around the room with Pensilva Folk Dance Group from 7pm to 9pm every 2nd and 4th Thursday of the month.

Wednesday 19th - Contact Coach James if you would like your child to take part in Kixx's Half term camp! jamesurrie@kixx.org.uk. Colleen & Ruth welcome all the over 18 bingo dabbers to come along and enjoy an evening of Bingo. Eyes down at 7.30pm.

Friday 21st - Pensilva Film Club welcomes you to come along for movie night! This month they're showing "The Critic", starring Sir Ian McKellen. Doors open at 7pm, film starting at 7.30pm.

Saturday 22nd - Pensilva W.I. will be having their Games Afternoon from 1.30pm to 4.30pm!

Sunday 23rd - Tess' Tea Party will be in full swing from 2pm to 4pm. Come along for an afternoon of games, music, raffle and food.

Tuesday 25th - NHS Blood Donors will be here! Are you able to donate blood and save lives!

Wednesday 26th - come along to a delicious Curry Night presented to you by Abi & Natalie from M2 Catering! Book in by Friday 21st February 2025 at Millennium House reception or call in. £20 per person.

There has been a huge demand for PICKLEBALL! First invented on Bainbridge Island, Washington in 1965 by three fathers looking to keep their children entertained. You have enquired and we have answered! We now have Pickleball at Millennium House. To book please call to see when the court is available. It is £10 per court per hour. You can also hire the use of a racket for £2 and a ball for £1 if you do not have your own.

Have a fabulous February

Vanessa

Bev Casban Memorial Charity

Money has recently been raised for charity in memory of Bev Casban.

Ray Southcott yet again put up his amazing Christmas decorations outside his house in Amanda Way, and the charity collection box contained £211.84. The Bev Casban Memorial Charity skittles night held at Millennium House raised £334.

The £545.84 raised has been donated to the British Heart Foundation.

Congratulations to Shirley Mills for winning the skittles competition!

Tamar Valley Male Voice Choir

Enjoy singing? Would you value some camaraderie and fun? Tamar Valley Male Voice Choir welcomes new members.

Think you wouldn't be good enough? You don't need to be able to read music. You'd be surprised at what you can achieve with some friendly support and help.

Don't hesitate - come and give it a go. Men of all ages welcomed.

The Choir has about 25 members and was founded in 2006. It has a full programme of concerts, entertaining audiences in Cornwall and Devon, through which it has helped to raise thousands of pounds for local and national charities.

The music repertoire is wide - including traditional male voice pieces, songs from the shows, folk songs & songs from the "pop" scene. Something for every taste.

Where do we rehearse? - Callington Methodist Church Hall, Tuesday evenings 7.30p.m.

Interested in finding out more? Chat to **Geoff Gunning** - **01752 895102**

or visit the website : www.tamarvalleymvc.com

A warm welcome awaits you !!



PENSILVA AND ST IVE FOOD HUB

At Rivendale, School Road, Pensilva PL14 5PG

The idea of the food hub is to serve as a bridge between supermarkets and the local community, redistributing surplus food that might otherwise go to waste.

Every Wednesday morning from 8.00 am until 5.00 pm the hub is open and food can be collected from the above address.

Donations for food are always welcome and will go towards purchasing more food for the following week.

A pink bin will be placed by the wooden box on the driveway. If you have any surplus in-date food and would like to make a donation, please place it here. If you are donating homemade cakes, please list the ingredients used.

If anyone is experiencing financial hardship or would like benefit advice, we can take referrals and signpost you to the local Food Bank in Liskeard.

We are currently in the process of creating a Facebook Page to provide more information to the community.

In the meantime, if you know anyone who is vulnerable, or needs support in the Pensilva and St Ive area, please contact Janey Bryson on 078 0866 3749.

Thank you

Pensilva WI - January Report

Well - snowy scenes, freezing temperatures and icy roads meant that the January meeting was postponed to next month, so that everyone could stay safe and warm but, in true Pensilva WI style, there was still plenty of action behind the scenes!

Posies were taken, as soon as possible, to members celebrating their Birthday this month - Jean Hoare, Belinda Smith, Jean Cole, Zandra Patten and Di Whittle.

The usual smaller member groups continued to be active during the month - with a creative sewing day, walking netball and the committee all keeping people busy.

Planning also continued for upcoming events:

Marie Curie Afternoon tea on **Saturday 15th March 2.30-4.00pm** at Pensilva Village hall - everybody most welcome for delicious refreshments, raffle and bring and buy.

Members and their families are also invited to the annual skittles afternoon at Millennium House - **22nd February 2.00-4.00pm**

The February Meeting (postponed from January) will be a special event, open to everyone on Wednesday 12th February - an evening with **Tony Rea from Great British Sewing Bee**. £5 to visitors and there will be a raffle for Tony's charity. He will display some of his creations and talk about his time on the show. 7.15pm Millennium House. We hope that you can make this new date. All welcome!

Pensilva WI are still **collecting used stamps** for CFWI (Cornwall Federation of WIs) - all money raised will go to events within the county, including the Royal Cornwall Show tent. Please give to any member or put in the collection boxes at Millennium house. Thank you!



Mary

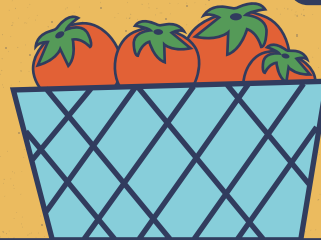
PENSILVA



Free
Entry

Featuring local sellers,
craft stalls, indoor carboot,
baked treats, and live plants.
Refreshments available and bar!

£5 per
table



←← MILLENNIUM HOUSE PRESENTS →→

PENSILVA MARKET DAY

**FIRST SUNDAY OF THE MONTH;
NEXT MARKET DAY IS...**

2ND FEBRUARY

SELLERS FROM 10am; BUYERS 11am-2pm

**Call Vanessa on 01579 363096 or email
ness.mhouse@gmail.com
to book your table or other enquiries**

**Fancy something spicy for lunch instead of the
usual pasty? Hui will be selling Kimchee Noodles
(and jars of homemade Kimchee and chilli oil if
you want more!)**

PRINCESS ROAD, PL14 5NF



I AM MARK

A Daring New Staging of the Gospel of Mark

Performed by Stefan Smart

Directed by Lisa Gilmour

**One Man
One Chair
One Incredible
True Story**

"Sometimes it takes a living voice, like this one, to make you hear the Bible for the first time."

Archbishop Rowan Williams

For more information go to:
www.iam-mark.com

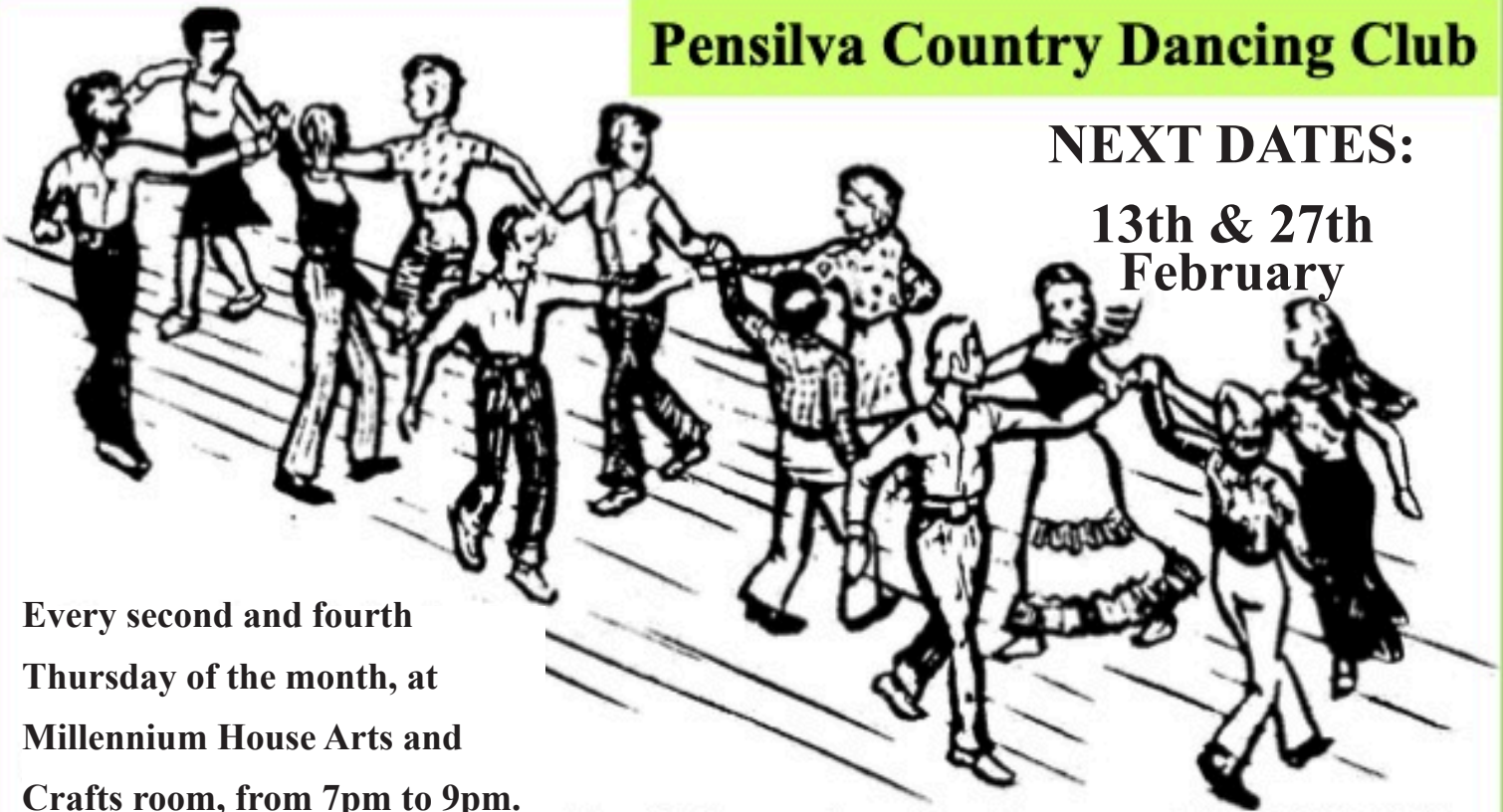
St Ive Parish Church
Saturday 8th March 2025
7:00pm

Tickets £10 each from Brian 077114 53380

Pensilva Country Dancing Club

NEXT DATES:

**13th & 27th
February**



Every second and fourth
Thursday of the month, at
Millennium House Arts and
Crafts room, from 7pm to 9pm.

For information ring Frances 01579 363718

**ROYAL
VOLUNTARY
SERVICE**

RVS WEDNESDAY CLUB, PENSILVA

Meeting in the village hall every 3rd Wednesday of the month. Entry £2 which includes raffle and refreshments, 2-4pm

February 19th - Cornwall Air Ambulance

March 19th - Ann Hughs playing harp

Everyone Welcome. For further information please contact:

Cherry Woodhouse (Chairperson) 01579 363674

Jane Hall (Secretary) 01579 363379

MILLENNIUM HOUSE COMMUNITY COFFEE SHOP

Open **Tuesdays, Wednesdays, and Fridays; 9am to 1pm** (the Post Office is open until 11:30am on these days). We, the volunteers, opened the Coffee Shop in 2017 with the hope of giving something back to the community. The atmosphere is relaxed, making it an ideal place to enjoy meeting up with friends for a cuppa and a chat. A warm welcome is assured. We would like to say a huge "Thank You" for your continued support.

the story of Emily

*taste our
heritage food*



At The Story of Emily, architectural marvel and warm hospitality await you in the Restaurant, where this story's tie between South Africa and the late 1800s is further brought to life through the reimagining of heritage dishes.

We are thrilled to share that our Annual and Neighbour Pass Holders can now bring up to four guests into the Restaurant, without the need for your guests to pay an admission fee.

Throughout December–February the Restaurant is open from 9am–4pm, our full menu is served until 3:00pm, and cakes until 3:30pm. No bookings are required to dine with us.

thestoryofemily.com

St. Ive Village Hall, The Cross PL14 3LZ

HALL HIRE

£5 an hour

Includes use of the kitchen and electric (except wall heaters, which are on a £1 coin meter)

For bookings ring Amanda 077 033 930 70

Regular Group and Activity Timetable

| Group | Date and Time | Contact details |
|--|---|--|
| Gardening Club | 1 st Monday monthly 7.30pm | stivegardeningclub@gmail.com |
| St. Ive Snooker Club | Mondays and Thursdays 7pm | 01579 382315 R. Bunkum |
| Mobile Post Office | Wednesday 10.30 – 11.30am | |
| Village Coffee Morning | Wednesday 10.30am – 12 | |
| Methodist Sunday Service | Check timetable in Parish Pump for services | Kathryn or Keith Mutton 01579 382334 |
| <u>Chattermakers</u> Chat and Craft | Thursdays Fortnightly | Kathryn 01579 382334 |
| Fit On the Floor Fitness Class | Tuesdays 7pm to 7.30pm | 07597383171 Facebook @jemfitnessliskeard |

Gardening Club



**St. Ive Village Hall
The Cross, St. Ive
PL14 3LZ**

**1st Monday of the month
7.30pm**

New members welcome

Email: stivegardeningclub@gmail.com

St. Ive Village Hall PL14 3LZ

Snooker Club



Monday and Thursday Evenings

7pm

Contact Ray Bunkum

01579 382315

Singing for well-being



Fun singing session All welcome!
Very simple songs to relax, uplift and
connect. No experience needed.

10-11AM TUESDAYS

**CRAFT ROOM, MILLENIUM HOUSE
PENSILVA
£5/session**

St Ive Church would welcome
anyone interested in learning to
ring the bells.

Practice night every Wednesday
7:30pm- 8:30pm

Contact:
Jeanne 363228 or Jenny 389201



**FOR FURTHER INFO, TEL:
CLARE 01579 382341**

ENERGY ADVICE CLINIC

CORNWALL LOW CARBON ENERGY ADVICE NETWORK



Supporting St Ive Community Resilience Project

We are a lottery-funded project providing **free, impartial** advice and support for householders across Cornwall who want to improve the energy efficiency of their homes

- We can help with**
- **Retrofit & Insulation**
 - **Solar & Battery Storage**
 - **Sustainable Heating / Heat Pumps**

Chat with our adviser and discover smart, sustainable choices for your home



**Millenium House, Princess Road, Pensilva,
Liskeard PL14 5NF**

Sunday

2 February 2025

11am - 2pm



Cornwall
Climate
Action
Network



Freephone 0800 954 1956



lowcarbon@cep.org.uk



www.cep.org.uk

Neighbourhood Development Plan

Online Business Survey by St Ive & Pensilva Parish Council

Just before Christmas the NDP Committee sent out over 100 letters to local businesses that operate in the St Ive & Pensilva area. The Online Business Survey is aimed at anyone who runs a business located in the Parish, or who lives in the Parish and runs a business from their home, whether they be a formally registered business or self-employed.

If you have received one of these letters then we would be grateful if you could follow the instructions within the letter for access to the online business survey. We need to have the views of local businesses to help us write planning policies for business and jobs.

If you have already completed the Online Business Survey, and many people already have, then we would like to thank you for your contribution, it is very much appreciated.

A Neighbourhood Development Plan is a way of giving local people a stronger influence over planning application decisions, as by law, the Local Planning Authority (Cornwall Council) will have to take it into account.

We need to ensure that the St Ive & Pensilva Neighbourhood Development Plan represents the interests of the local community, local organisations and local businesses.

The Parish Council would like as many people involved as possible to help with the task of formulating the draft Neighbourhood Plan. If you do have some spare time, and would like to volunteer then please contact the Parish Clerk for further details:

stiveparish@btconnect.com

Follow the plan...

IF YOU WANT TO FOLLOW THE PROGRESS OF THE NEIGHBOURHOOD PLAN THEN PLEASE LOOK OUT FOR UPDATES IN THE PARISH PUMP NEWSLETTER, ON FACEBOOK, THE PARISH COUNCIL WEBSITE, AND THE NEIGHBOURHOOD PLAN WEBSITE AT

WWW.PLAN4STIVE.CO.UK



Film Club

Well, several joined me on our January trip to the West End to see *Miss Saigon*—a fairly harrowing portrait of life for both locals and American GIs living in Saigon at the time of the Vietnam war.

Loosely based on the opera by Puccini, *Madame Butterfly*, it follows the story of a young Vietnamese girl falling on hard times and working as a call girl in one of the many seedy bars in the city at that time. This awful war lasted 20 years (1955-75) with a death total of over a million and possibly as many as 3 million—the actual number of civilians was never accurately recorded.

Many of us will remember the exodus of "Vietnamese Boat People"—refugees fleeing the new communist regime once the allied troops had pulled-out. The human cost of this war was massive with those not only affected by combat but also the prolific use of chemical weapons and land mines, both of which continued to plague the countries affected for many years. I could go on!!

Anyway, this month's film, on Friday 21 February, will be *The Critic*. A cast, led by Ian McKellan and including Lesley Manville, tell the story of a powerful theatre critic who lures a struggling actress into a blackmail scheme. Set in London in the 1930s this film is listed as "crime, drama, mystery, thriller"; so there should be something to suit everyone!

As usual, doors open at 7pm for a 7.30 kick-off and the Mel bar will be open before and after the show. Admission is now £4 for members and £6 for those either renewing membership or joining as new members.

For further information, contact Judy: judy.two@outlook.com or call 01579 208836 or 078 8817 8739.

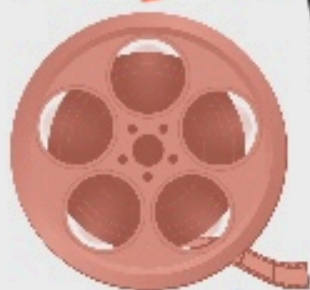
Pensilva Film Club - in association with C-film, part of Creative Kernow

Judy



Pensilva Community Association and C-Fylm Present

PENSILVA FILM CLUB



FRIDAY, FEBRUARY 21st
DOORS OPEN 7PM, FILM STARTS 7:30PM

THE CRITIC

£4 for C-Film members

Non-members can join on the door for £6, which includes your first film.

ACADEMY AWARD NOMINEE IAN MCKELLEN



GENMA ARTERTON MARK STRONG LESLEY MANVILLE
THE CRITIC



Academy Award Nominee Sir Ian McKellen (The Lord of the Rings, The Good Liar) stars as a powerful London theater critic who lures a struggling actress into a blackmail scheme with deadly consequences. A suspenseful thriller co-starring Gemma Arterton (Quantum of Solace), Mark Strong (Tinker Tailor Soldier Spy) and Lesley Manville (Mrs. Harris Goes to Paris).

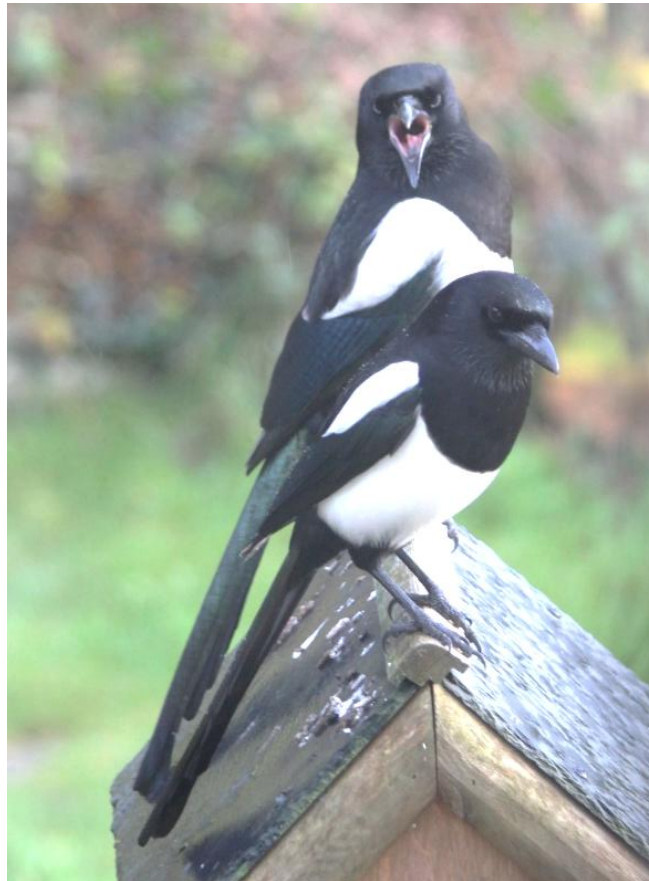
Thriller / crime
1 hour 34 minutes.
SCAN FOR TRAILER ----->



FIFTEEN + YEARS OF WILDLIFE WATCHING IN THE PARISH OF ST. IVE

Since moving to the Parish at the end of 2009, I have been photographing and recording the wildlife which I see at my home on the edge of Pensilva on a daily basis. This month I am looking at one of our year-round visitors to the garden...

...THE MAGPIE



The Eurasian Magpie is a member of the corvid (crow) family and like its relatives, is an intelligent bird. It is a frequent visitor to feeders and particularly to fat balls which they will consume in large quantities. Along with other corvids, but unlike most of our other visitors, they are very aware of you appearing near a window in the house and will fly off - quite useful when you feel they have already had their fair share of what is on offer! Although at first glance they appear black and white, there is an iridescent purplish-blue sheen to their wing feathers and a green one to their tail.

Magpies are both carnivores and scavengers. In spring, they will take both the young and eggs from other birds' nests, though they will also eat fruit, insects, invertebrates and road kill. If a magpie appears in the breeding season, you will hear cacophony of alarm calls from other species who know the danger they present to their chicks. We have to remember, however, that the magpie also has young to feed at this time of year. On the whole, they are largely scavengers for the rest of the year, but their corvid



intelligence allows them to take advantage of any opportunity which arises. Back in 2021 when I was writing about the song thrush, I told about how a magpie watched patiently as a pair of male thrushes had a fierce fight over a female. During this, one thrush fell into our pond and had to flap its way to the side. It then flew out of the garden, just getting enough height to get over the hedge. It then made the mistake of flying back in and landed on the lawn. The magpie knew it would now be exhausted and took it before it could move.

In early April the males will help the females to build a nest by bringing in materials for her to use. They are renowned by using all sorts of things in their nests and seem to be attracted to shiny things to decorate them. Usually, just one clutch of 5 to 9 eggs will be laid, which take 15 to 16 days to incubate. It can take between 22 and 28 days for the young to fully fledge. It is not uncommon for magpies to return to the same nest the following year.

Non breeding birds are often seen in groups, giving rise to the children's rhyme "One for sorrow, two for joy, three for a girl and four for a boy..." etc. I have seen up to 10 birds, their noisy rattling call disturbing the peace as they fly from tree to tree.

In 2023 this magpie with a bare patch on the back of its face (probably caused by an infestation of mites) was a frequent visitor to our garden. It did recover over time, but it also give us a chance to see a part of a bird's anatomy which is usually hidden. The round organ with a cavity just below and behind the eye, is in fact its ear.



Magpies are the subjects of many myths. These range from thinking that it is lucky to see one, to their being in league with the Devil. I have a friend who always has to say "Good morning mister magpie" when she sees one to avert bad luck! One individual (which we later found out had been kept captive for a while and illtreated) was certainly bad luck for my son, then aged two, who had to be rescued when it attacked him in a playground! However, this is not normal behaviour as they are usually quite wary of humans and keep a safe distance from us.

These widespread, intelligent and successful birds are fascinating to watch and serve a useful function in clearing road kill and other dead creatures, so perhaps we should celebrate them more!

HAPPY WILDLIFE WATCHING!

Hilary

Pentiddy Community Woodland

We're nearly at the end of another busy Winter season in the woods and are eagerly awaiting signs of Spring. We're especially keen to see if any of the bluebell bulbs we planted will come up....

There's been a great team of volunteers helping out this Winter but there's always room for more. If you're interested in helping to support the community woodland in any way please get in touch at communitywoodland@pentiddy.co.uk or phone 07421813976. We're always in need of more hands for the physical work as well as needing soup makers and cake bakers to help fuel the volunteers.

The main reason for this little update is to thank three of our longest-standing trustees, Pete and Angie Haines, and Carol Morse. All three were founder members back in 2001, helping to set up the charity before the field was even purchased. At our latest AGM they were finally relieved from their duties. Many, many thanks to all three of you for nearly quarter of a century of incredible support! If it wasn't for you the woodland wouldn't be the beautiful place that it is today.

Photo is from the official opening of the woods in 2002. Peter Blake, Chairman of the Cornwall branch of the International Tree Foundation with Angela Haines then Chair of Pentiddy Community Woodland Charity.



Update on Aid for Ukraine

Happy New Year to everyone.

As of 30th Dec 2024, Russia occupied almost 20% of Ukraine and about 3 to 3.5 million Ukrainians are now estimated to be living under occupation.



As we commence 2025, it is with hope and faith in our hearts that we wish for a peaceful end to the war in Ukraine. It is hard to believe that as we fast approach the month of February, the war will be continuing on, into its third year.

The Nightingales team are currently planning on taking their next vehicle out to the front line within the next few weeks. This vehicle will be stocked with medical aid and supplies and will be taken to the front line, where it will be delivered to medics, to rescue and evacuate wounded soldiers and civilians from the frontline. If you know anyone with a good quality second hand vehicle for sale, please get in touch.

The team are also happy to give local presentations to clubs, groups and organisations on a donation basis to boost much needed funds. As always, we are extremely grateful for donations of any of the following items listed below. If you would like to donate any unwanted items that can be sold at our car boot sales or in the box outside my house, please contact me on mobile 07808663749 for collection. God bless.

Janey

Nightingales UK are currently asking for donations of the following Medical Aid:

Equipment

- Collars
- Dressings/Bandages
- Splints
- Syringes
- Crutches
- Eye Wash/Eye Dressings
- Wheelchairs
- Inhalers
- Walking Frames
- Blood Pressure Monitors
- Gauze

- Blood Sugar Testing Kits
- Plasters
- Dressings for Burns/Burns Gel
- Wound Closure Steri-Strips
- Sutures
- Procedure Packs
- First Aid Kits
- Blood Sugar Testing Kits
- Scissors
- Syringes
- Feeding Tubes

Aid to Support the Paramedics Providing Front Line Response

- Waterproof boots and Winter Jackets
- Torches
- Power banks to charge phones etc
- Metal Detectors

Any Over the Counter Medicines and Unused In date Medication with the Exception of Controlled Drugs

- Paracetamol
- Ibuprofen
- Immodium/Dioralyte
- Decongestant Nasal Sprays
- Vicks/Strepsils
- Disinfectants
- Antihistamines e.g. Piriton, Loratadine, Cetirizine

Humanitarian Aid:

- Childrens Nappies
- Baby foods/wet wipes
- Childrens Mixtures i.e. Calpol/Cough medicines
- Infant formula (6 months)
- Childrens Purees (Vegetable, fruit, meat)
- Childrens/Adults Hygiene - Shampoo, Soaps, toothpaste, toothbrushes
- Feeding Bottles
- Dummies/teething rings
- Adult incontinence pads
- Disposable Nappies
- Adult Shampoo, Soap, Toothpaste, Toothbrushes
- Washing powder
- Washing up liquid
- Toilet paper
- Sanitary Pads
- Tin Canned Food (Vegetable, Meat, Fruit)
- Cereals, Pasta, sugar, Tea and Coffee

St John's Mission Church

Refreshments served before and after services

Services for February 2025

| | | | |
|------------------|------------------|----------|---|
| Sunday | 2 nd | 11.00 am | Holy Communion |
| Sunday | 9 th | 11.00 am | Morning Worship |
| Sunday | 16 th | 11.00 am | Morning Worship |
| Sunday | 23 rd | 10.30 am | Menheniot Parish Church United service with Bishop Hugh No service at St John's |
| Thursdays | | 10.00 am | Morning Prayer Fellowship |

FEBRUARY EVENTS *Please see posters for full details*

| | | | |
|-----------|------------------|------------------|---|
| Thursday | 6 th | 12.00 to 1.30 pm | Baked Potato & Pudding Lunch |
| Sunday | 16 th | 3.45 pm | Tea Time Church for children & their families |
| Wednesday | 19 th | 3.00 pm | Good Grief Café |
| Tuesday | 25 th | 2.00 - 4.00 pm | Stitch, Knit & Natter |
| Thursday | 27 th | 2.00 - 4.00 pm | Memory Café |

*For further details or if you know of any illness or need in the village, please call Geoff, 362698 or Frances, 363718
Please put prayer requests in the box. St John's is open daily 10.00am - 3.00pm for personal prayer & reflection*



THE CHURCH
OF ENGLAND

Princess Road Pensilva PL14 5NF

The Tribute Cluster of Churches

Contact for Baptisms & Marriages

Reverend Li Selman 07790 272714

revliselman@icloud.com



Church Wardens
Geoff & Carolyn Cox
01579 362698



St John's Mission Church Pensilva

Good Grief Cafe



Wednesday 19th February
3.00 pm

We can grieve for many reasons:
the death of a friend or relative;
the diagnosis of a friend or relative
with dementia or a terminal illness;
loss of mobility or driving licence;
closure of your place of worship;
closure of a support group;
the loss or illness of a pet;
the loss of freedom;
the loss of a job;
homelessness;
the loss of stability in society.
The Good Grief Cafe is for anyone
who is grieving for any reason.
Come for company, for friendship.
Eat cake, drink tea and coffee.
Chat if you want to,
or just be there.
Everyone is welcome.

For further information
contact Geoff 01579 362698

PENSILVA MEMORY CAFE

*If you have memory problems or
you are a carer for somebody who does,
come and join us at St John's Mission Church
for a cuppa and some cake.*

*We'd love to see you and hope that
you will enjoy yourself.*

Guest Speakers

Activities

Quizzes

Games

2.00 to 4.00 pm

Thursday 27th February

Contact Geoff on 01579 362698





HELPING LOCAL PEOPLE IN CRISIS



St John's Mission Church
Collection Point

URGENTLY NEEDED ITEMS

- FRUIT JUICE - LONG LIFE
- TINNED SWEETCORN
- TINNED CORNED BEEF
- TINNED CARROTS
- BISCUITS COFFEE
- TINNED HAM
- WASHING POWDER
- WASHING UP LIQUID

GRATEFUL THANKS

to all of you who most generously donate.

Teatime Church



For children and their families
Playing Games
Singing and Praying Together
Sharing a Bible Story



Sunday 16th February
 3.45 pm
 St John's Mission Church
 Pensilva

Eating Tea

For more information
 contact: Rev Li Selman
revliselman@icloud.com





LENT LUNCH

Thursdays 12.00 to 1.30 pm

6th, 13th, 20th March

3rd, 10th, 17th April

Please come & enjoy
a simple meal of homemade soup
with a roll & cheese, coffee or tea.

St John's Mission Church
Pensilva

Lent is the period of six weeks - 40 days not including Sundays - leading up to **Easter**, the most important festival in the Christian calendar.

Lent allows Christians to remember that Jesus went into the desert to fast and pray before beginning his work for God. Jesus was tempted several times, but was able to resist.

Lent is a time for testing self-discipline.

A time for giving things up, such as giving up a full meal.

Lent is not about gloom and abstinence for the sake of it, but a chance to grow in faith, which is something to be cheerful about.

*Donations
in aid of church mission in
our community*

BAKED POTATO & PUDDING Lunch



St John's Mission Church
Pensilva

Thursday 6th February

12.00 to 1.30 pm



BRING & BUY
STALL

Donations in aid of church mission in our community



**Tuesday
25th
February**

**St John's
Mission Church
Pensilva**

**on the
last Tuesday
of the month**

**2.00
to
4.00 pm**

**Contact Kathleen
01579 363686**

MELODI LISKERRET

- A mixed group, singing a variety of well known numbers including Folk & Cornish songs.
- Local to you!
- Weekly rehearsals in St. Ive – Gorfenna, PL14 3LX
- Friendly informal rehearsals with a tea break and biscuits!!
- **Free one-to-one professional singing tuition within a few weeks of joining!!**

For more information, please contact Gerald, secretary, on 01579 363881 or email: charaton@btinternet.com



Unity Methodist Church



Unity
Methodist
Church

Sunday 2nd February 11.15am - United Service at St Ive Parish Church.

Sunday 9th February at 10.30am - The United Service will be at St Ive Village Hall led by David Wenmoth

Sunday 16th February 11.15am - United Service at St Ive Parish; 4pm United section Service at Pelynt MC led by Rev Stuart Reed

Sunday 23rd February 10.30am - United Service at St Ive Village Hall led by Julian Langston

The Callington and St Ive Wesley Guild will only meet in February at Callington Methodist Church 7.30pm. This months meetings on Monday 3rd February when the guest speaker will be Rev Tom White on his Camino de Santiago pilgrimage. Then on Monday 17th February the guest speaker will be Jayne Reed on the work of "Baby Basics"; all welcome.

The Chattermakers craft group are always ready to welcome new people to come and chat, craft and have a good evening. They resume their meeting on Thursday 6th and then Thursday 20th February 7.30pm at St Ive Village Hall.

St Ive Church

| | | | |
|-----------|-----------------|---------|-------------------------------|
| Feb 2nd | Morning Service | 11:15am | In Church |
| Feb 9th | Chapel Service | 10:30am | In village Hall |
| Feb 16th | Holy Communion | 11:15am | In Church |
| Feb 23rd | Chapel Service | 10:30am | In Village Hall |
| March 8th | I Am Mark | 7pm | In Church (See advertisement) |

St Ive Church Notices

A friend and colleague from one of our Cluster Churches was invited by a friend whilst she was on holiday in London to a recital of "I Am Mark". She says "I had no idea what to expect, but it was gripping! I was enthralled with the intimacy of the story and found myself leaning in, expectantly, looking for more. The recital brought 1st century Israel to life and I felt a throbbing energy of his words draw me in. I saw this talented unassuming man who was delighted when I asked if he could bring his recital to Cornwall".

Stefan Smart is a former English and Drama teacher cum actor who specialises in telling stories from the bible. He has taken his recital of I Am Mark across four continents to wide acclaim and has just returned from his 3rd and most successful run at the Edinburg Festival Fringe and a busy tour of UK prisons.

I Am Mark is an attempt to recreate for modern audiences what it must have been like for the first hearers of this some 40 years after the events described. Because there were few books to speak of, people would have been used to storytellers like Stefan not just reciting, but enacting the text as a full bodied drama with all the characters and situations brought startlingly to life.

You will be able to see this for yourselves at St Ive Church on Saturday 8th March at 7pm. Tickets available from Brian 07711453380 or from St Ive and St John's Church.

(See the advertisement for "I Am Mark" elsewhere in the "Pump" for full details)

Badminton at Millennium House

Monday & Tuesday 5pm - 7.30pm - Informal Badminton - £10 per hour per court, call 01579363096

Monday & Tuesday 7.30pm - 9.30pm - Pensilva Badminton Club - £5 per person, contact Richard 01579349324 or Nigel 01579363594

Wednesday 5pm - 10pm - Informal Badminton - £10 per hour per court, call 01579363096

Please bring your own rackets & shuttles or you can rent a racket and shuttles for a small charge.



We need your **submissions**: news, announcements, posters for local events, even full articles if you think the community would find it interesting!

We need **photos** for the front cover. Taken a nice photo recently of a local event or somewhere in the parish and happy for us to use it? Email me, please!

We need **advertisers** to pay for the printing. If you're a local business, know that the Parish Pump is the first place most people turn to to find your services!

We need **volunteers** to deliver. If you don't currently have the pump delivered and could spare an hour or so a month, we'd love your help.

Either way, it starts with an email: stiveparishpump@gmail.com

Thank you for all your support, especially our advertisers, without whom the Parish Pump would not exist.

Colin Swinburne Electrical Services



All aspects of domestic and commercial electrical work.

Inspection and testing (EICRs), fault finding, new installations, rewires, consumer unit replacement, additional sockets, lighting upgrades, garden power and lighting, extractor fans and more.

Local Electrician in Pensilva. Free advice and quotes.



4.9 ★★★★★ Google reviews

CSES@btinternet.com • 07974 499138



FULLY CHARGED CORNWALL

High quality eBike rental



 eCargo bikes

 All terrain eBikes

 Long range batteries

 Accessories

 High powered Bosch motors

 **Daily, weekly and long term hire rates**

 **Delivery and collection to your home/holiday address**

 **Group bookings welcome**

Tel: 01579 558879

email: swrental@fullycharged.com

PAUL SHERBURN

Painting and decorating.

Kitchen and bathroom tiling.

Property maintenance.

30 plus years experience.

Tel. 01579 363808

Mob. 07990644431

M. D. ASSOCIATES:

Architectural Services:

Design.

Building Regulations.

Planning.

Experience + Reliability.

call

Des Morrow.

01579 346043.

01752 840910.

HEEL²TOE

My name is Penny Jordan Dip FH; MCFHP; MAFHP, and a Foot Health Practitioner fully qualified to Diploma level. I am also fully insured and DBS checked.

If you need toenails cut and filed, you are a Diabetic, have Callus formation (hard skin), fungal infection of your toenails or anything regarding your feet that worry you.

I can arrange a home visit by appointment so your feet can be looked after in the comfort of your own home.

Please contact me :-

07746 926146



Westwood Garden Maintenance

Anthony Watts

*Grass cutting, Clearance,
Weeding, Turfing, Hedge Cutting,
Patio Cleaning, Planting
FREE ESTIMATES*

01579 362019

07952 094472

www.westwoodgm.co.uk



Right-on 
Plumbing &
Maintenance

Gareth Haimes

Tel: 07947353682

**KILN DRIED
FIREWOOD**

MATTHEW

07884 112692



Window Cleaner

Also any upvc cleaned

i.e. fascias, gutters, etc.

gutters cleared & unblocked

Please phone Rob

01579 384435

079 9099 6886

Window Cleaner



Local Accountant offering fixed fee accounting services

With over 25 years experience, I am a fully qualified, friendly, local accountant

✓ Annual Accounts for Sole Traders and Partnerships

✓ Book Keeping & Payroll

✓ Personal Tax Planning

✓ Company Accounts

✓ Business Support & Advice

✓ Self Assessment tax returns

✓ iXBRL tax filing

✓ Tax investigation Fees Insurance

✓ Company Secretarial work

✓ Tax calculations for Sole Traders and Partnerships

Kate Vaughnley FCCA - Chartered Certified Accountant

Website : www.kvaccountingsolutions.co.uk or Email : katevaughnley@gmail.com

Telephone : 01579 532622 / 07725 004152

Matt's Windows

Repair of Windows, Doors & Glass Unit Replacement

Making draughty windows great again!

T: 01579 641228

M: 07533 387368

SEASONED LOGS



Telephone Jonathan
Mobile 07966
070725 or
01579 363157

J. J. Child

Plumbing and heating engineer.
Oil appliance service,
repair and breakdowns.

40 years' experience.

Call John:
01579 362336
or
07837 921086



Millennium House

Friday 5:30pm

Saturday 8am & 9:30am

Hayley 07966370233

slimmingworld.co.uk 

NICOLA GREENE

BSc (hons) Podiatry MChs

HPC Registered Chiropodist/Podiatrist

**Home Visit Practice treating all
your foot care needs:**

- Nail Cutting
- Corns and Calluses
- Thickened Nails
- Dry Cracked Skin
- Verrucae
- Foot Pain
- Diabetic Foot Assessments
- Wound Care

T: 01579 590027

M: 07786164205

E: nicki_greene@yahoo.com



Domestic Electrical
Property Maintenance
Interior & Exterior Work
Carpentry :: Decking
Kitchens :: Bathrooms
Wall & Floor Tiling
General Plumbing

MCCARTHY PROPERTY MAINTENANCE



HIGHLY REGARDED LOCAL BUILDER
COMPETITIVELY PRICED
COVERING THE SOUTH WEST

Contact Dominic

07968 599 675
01579 362 945

info@mccarthypropertymaintenance.co.uk

www.mccarthypropertymaintenance.co.uk



Demelza's Decor

PAINTING & DECORATING
SERVICES

Friendly, reliable mature lady decorator
based near Stoke Climsland now taking
bookings for April-June.
Free quote visits available now.

For interior painting & wallpapering

Contact Cathryn on:

07775 194030

demelzasdecor@gmail.com

or message via the website

www.demelzasdecor.co.uk

or the Demelza's Decor Facebook page



KERNOW ARCHITECTURAL SERVICES

- Architectural Design
- Planning Permission
- Class Q Specialists
- Building Regulations
- Project Management
- Building Conservation

www.kernowarchitectural.co.uk


enquiries@kernowarchitectural.co.uk

Telephone: 07398736726

Parade House, The Parade, Liskeard, Cornwall PL146AH

PensilvaCars

01579 363516

- ✓ MOTs Class 4
- ✓ Service
- ✓ Repair
- ✓ Tyres
- ✓ FREE Courtesy Car
- ✓ Car & Van Sales
- ✓ Diagnostics
- ✓ Air Conditioning
- ✓ 

We have offered a supply, fit & balance of tyre service for 10 years at competitive prices.

Most of our tyres can be supplied the same day.

LOCAL RECOVERY £45.00

www.pensilvacars.co.uk

pensilvacars@hotmail.co.uk

We can service and repair your car to manufacturer specification, keeping your dealer warranty without main dealer expense.



NC TREE SURGERY

**Expertise
in all kinds of
tree work**



- Tree felling, dismantling & pruning
- Hedge Cutting
- High quality work
- Left clean and tidy
- Full removal and chipping available
- Fully qualified and insured

**Please call or email
Neil Cloake for a quote**

City & Guilds

Qualified and insured local tree surgeon

NPTC
Qualified



07855 461 483



nctreesurgery@yahoo.com



GENERAL GARDEN & HOUSE MAINTENANCE



NO JOB TOO SMALL

Call to discuss your requirements.
NO OBLIGATION quotes given.

One off jobs or regular work catered for.

Here are some examples...



OUTSIDE

MOWING

HEDGE CUTTING

FENCE PAINTING

BOARDER WEEDING

PATIOS & DRIVES

CLEANED



INSIDE

WINDOWS CLEANED
INSIDE & OUT.

PAINTING

CLEANING

SHOPPING

IRONING



CALL ANDREW CARLIN

now on:

07407 323888

Thank you.

Trystan Phillips

Carpentry/Joinery & Property Maintenance



38 Years' Experience

All aspects of Carpentry undertaken including:

Bespoke Carpentry & Joinery
Kitchen Installations

Doors, Partitions, Skirtings, Architraves, Shelving

Timber Floors renewed/repaired, Laminate Floors fitted

Timber Windows repaired including 'Sliding Sash'

Plus General Property Maintenance:

Including Painting/Tiling and much more!

Fully insured

(Including Public & Product Liability)

07397 153792

trystanphillips carpentry@gmail.com

01579 363150

PAUL ALLEN

PAINTER & DECORATOR

45 years + Experience

City & Guilds Advanced Qualification

Internal & external work

All paint finishes

All types wallpapering

Minor repairs undertaken

Fully insured

No job too small or too large

Quality assured & guaranteed

I provide a professional service at a reasonable cost

Please contact me for a free estimate

Mobile: 07548 941437

Email: paul.allen300@btinternet.com

Muststep Podiatry



Routine Footcare, Nail Reconstruction, Nail Surgery,
Fungal Nail Treatment, Verruca Treatment,
Specialist Biomechanics and Orthotics, Home
Visits/Nursing Homes, Footcare Advice &
Preventative Care for Low-Risk Patients.

Contact 07522 577 012

West Looe,
PL13 2HA

Looe Ear Care



Clinic £50 both ears, Home visits from £55, Special
rates for Nursing homes. Thorough eardrum and
canal inspection.

Safe microsuction for ear wax removal, ear
irrigation available when suitable. Includes expert
ear health advice.

Contact 07899 548 979

Oak Beauty

By Anya

Massage,
pedicures, manicures
including gel polish,
builder gel,
eyelash lifts and tints,
eyebrows
and much more!



07944 072902



Group Travel

Day Trips & Coach Holidays

Enterprise Park, Midway Road, Bodmin, Cornwall PL312FQ Tel: 01208 77989

Coach Excursions & Tours 2025

| | |
|----------------|--------------------------------------|
| 29th March | Stitching & Craft Show, Westpoint |
| 8th April | Geevor Tin Mine & Lands End |
| 6th May | Enys Garden, Bluebells |
| 13th-19th May | Melrose & the Scottish Borders |
| 27th May | Thorpe Park (book early for tickets) |
| 11th June | Marwood Hill Gardens, Barnstaple |
| 24th June | Mount Edgecombe |
| 3rd July | Tiverton Canal Barge Trip |
| 14th-18th July | Visit Chester |
| 29th July | Port Eliot Estate with Kernow Mill |
| 13th August | Plymouth Fireworks Championships |

Visit our website for all our excursions & tours.

Call: 01208 77989 for bookings and brochure
website: www.grouptourtravelcoachhire.co.uk
email: grouptourtravelcornwall@btconnect.com

Bodmin MOT Centre

01208 77989

Garage Services
MOT Testing Station
Classes 4, 5 & 7
Servicing & Repairs
High Vehicles & Motorhomes
Brake Test & Headlight Alignment
Pre MOT Inspections
Annual & Interim Vehicle Servicing

~
Commercial interim inspections available
including brakes and lights





~
Helping you stay compliant

Bodmin MOT Centre
Enterprise Park, Midway Road,
Bodmin, Cornwall PL312FQ



FULLY CHARGED CORNWALL

eBike specialists on your door step

-  A wide choice of 'best' in market eBikes
-  All major cycle schemes accepted
-  0% and long term finance available
-  Try before you buy with home demo's



Long-tail eCargo



eMtb



Front-load eCargo



Large range of leisure/commuter eBikes



 cornwall@fullycharged.com

 TEL: 01579 558879

 Open 10 am -4pm
except Wednesday and Sunday

Unit 1, Old topfoto buliding , Barras Place, Liskeard PL14 6AY

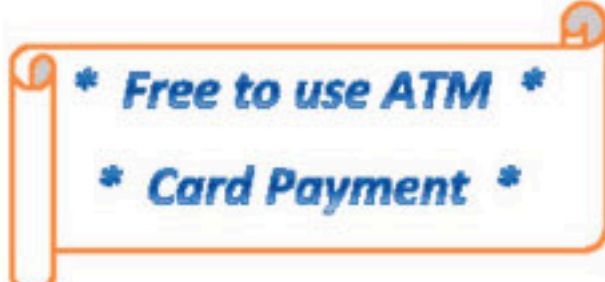
Pensilva Stores

Amazing Value



Premier
a great deal more from your local store
Mon-Sat. 7:00 AM. - 9:30 PM.
Sunday 8.00 AM. - 9:30 PM.

- ✓ Fantastic Special Offers every month!!! (See store leaflets)
- ✓ Come and Check out our great deals on Wine, Beer and Spirits
- ✓ Local Produce: Homemade Butter and Clotted Cream, Meat from our local butcher
- ✓ Cornish Fresh Fruit and Vegetables
- ✓ Fresh Bread, Pasties and Cakes
- ✓ Take Away Coffee, tea and hot chocolate
- ✓ Newspapers and Magazines, Greeting Cards
- ✓ Paypoint, Lottery



*** Free to use ATM ***
*** Card Payment ***

Friendly Staff + Service with a Smile !!!

Pensilva Stores is a family run business who have been serving local people and visitors for more than 21 years.

Higher Road, Pensilva, Liskeard, Cornwall PL14 5NQ
Tel: 01579 362547



Pensilva & St Ives Post Office Service

Pensilva: Through the coffee shop on the 1st floor of Millennium House

Tuesdays: 9 to 11:30am

Wednesdays: 9 to 11:30am

Fridays: 9 to 11:30am

The Millennium House coffee shop is also open on these mornings.

St Ives: At St Ives Village Hall

Wednesdays: 10:30 to 11:30am

Coincides with the St Ives Village Hall Coffee Morning