

OCTOBER, 2024

# THE PARISH PUMP

Newsletter for the Parish of Pensilva and St Ive



**Winnners of the Pensilva WI  
Horticultural Show 2024!**

## DISCLAIMER

The articles appearing in this magazine do not necessarily represent the views of the Parish Council nor of the Parish Pump Editor.

### Parish Councillors Telephone List

Alan Moss	01579 362064	Marlene Carr	01579 362919
Rosemary Farley	01579 384810	Martin Corney	01579 382450
Tony Hodson	079 7353 6964	Nigel Gisby	01579 363096
Paul Mann (vice chair)	01579 363757	Nigel Libby	079 6889 1814
Ivor Vaughan	079 7993 4604	Patricia Steer	01579 363096
James Bruce	074 1119 2645	Craig Vaughley	01579 364083
Steve Willis (chairman)	01579 363096		

Your Cornwall Councillor is **Phil Seeva** - 07746 815302 [cllr.phil.seeva@cornwall.gov.uk](mailto:cllr.phil.seeva@cornwall.gov.uk)

### Meetings of St Ive Parish Council

Meetings are usually held on the second Monday of every month, except August and December when no meeting is held. Please see the website or notice board for meeting dates, agendas, and minutes.

<https://st-ive-parishcouncil.gov.uk/minutes-agendas/>



## Police Community Neighbourhood Office

Your Community Support Officer is PCSO Steve Edser 30173  
Email: [CIOSNBMLLST@devonandcornwall.pnn.police.uk](mailto:CIOSNBMLLST@devonandcornwall.pnn.police.uk)

To report a crime call 101 or go to [www.devon-cornwall.police.uk](http://www.devon-cornwall.police.uk)

In an emergency call 999

## Contact Details for St Ive Parish Council and Millennium House

### Address for correspondence:

Millennium House, Century Square, Pensilva PL14 5NF

General Parish matters should be raised initially with the Parish Clerk, Jenny Hoskin, who will present them to the Parish Council  
01579 363096, email: **stiveparish@btconnect.com**

For finance matters for the Parish and Millennium House, contact  
John Body  
01579 362102, email: **millenniumhouseadmin@btconnect.com**

Millennium House enquiries and reservations to Vanessa  
01579 363096 email: **ness.mhouse@gmail.com**

## Parish Pump Submissions

Via email only to **stiveparishpump@gmail.com**

The deadline for submissions is the 18th of the month. Please email your text submissions directly in the email body, and attach any images. Full, half, or quarter page designs can be sent as JPG, PNG, or PDF files.

## Advertising Costs

Please note that all advertising must be paid for prior to publication.

Two months free when purchasing for a year.

Quarter page: £10 per month, or £100 for 12 months

Half page: £20 per month, or £200 for 12 months

Full page: £33 per month, or £330 for 12 months

*(All prices are inclusive of VAT)*

# Letter from the Editor

Not a day goes by when I don't hear of more online writers losing their jobs to AI. As a writer myself, I've had to diversify more to video, but AI is even starting to infiltrate that.

Despite the risks that AI poses to humanity, and the likelihood that all desk jobs will all be replaced within the decade, the technologist and Star Trek fan in me can't help being excited about it.

I've long been a believer in "Strong AI", or as it's called nowadays... AGI (Artificial General Intelligence). That means it can effectively do everything a human can, but better, and faster.

I'm not religious, so I don't believe there's anything innately special about the human brain. I'm confident it's possible to create an artificial brain, and have it be every bit as "conscious" and creative as a real one.

I recently read about some experiments in the 50s that involved patients who had been treated for epilepsy by having the connective tissue between the two halves of the brain (the "corpus callosum") severed. It revealed some fascinating properties of the mind and deepened our understanding of what consciousness actually is.

One of the experiments showed that the side of the brain ultimately responsible for logic and reasoning would make excuses for the actions of the other half of the brain which it was no longer aware of. In other words, it was prone to "hallucinations", in much the same way as our current AI models are.

I suspect that consciousness simply arises given high enough complexity, but differently levels of consciousness are possible. When you have many "minds" communicating, one naturally takes on the role of overseer. If that is the case, at some point, we'll create an artificial consciousness whether we intend to

or not.

I say all this because we've just taken another giant leap to get there, and it's terrifying and exciting in equal measure: OpenAI just released a new version of their model, dubbed "o1" (oh one).

We already had a superb model capable of generating text accurately in response to any input. It gave the *illusion* of reasoning, but without actually reasoning in the same way that a human might work through a problem. You would get an answer without knowing the why.

The new model adds layers of reasoning inbetween the input from the user and final output. Rather than one single component generating the answer to your query, it'll now spend some time thinking about the query, and what it needs to do to work it out... and then when it has worked it out, it'll check its own answer. You can even expand all of its working to see how it arrived at the conclusion it did, and "show its working". Sometimes it'll take minutes to think about the answer, working through possible options, checking them, then going back and trying other possibilities. You know... like a person does.

It's incredible. It's logical. It's also far better at "Only Connect" than I could ever hope to be.

A few years ago, AI could barely string a sentence together. Now's it's using logical reasoning to work through complex problems.

What do you think it'll be capable of in five, ten years? Will your job, or your child's job, even require a human, with all their emotional issues and HR requirements? Now is the time to consider how we handle this brave new future. The cat is out of the bag, and it ain't going back in, I'm afraid.

James Bruce, Parish Pump Editor

# Chairman's Report

Margaret Thatcher. Marmite. Kier Starmer. All share one common aspect. You either love them or hate them! Whilst the latter has yet to endear himself to me and every other person of a similar age, the other two are well established in our minds under the "Love" or "Hate" category. Without wishing to alienate any reader of this article, it would have to be conceded that Margaret Thatcher did some pretty amazing things during her tenure of Downing Street one way or another depending on your love/hate viewpoint.

One policy she did enact was the "Right to Buy" scheme, where council tenants were able to buy their own property. Whilst this was a noble and worthwhile idea, benefitting many thousands of people, sadly it had one almighty flaw—we now have a desperate shortage of affordable housing whether to rent or buy.

Nowadays, we are used to reading about trees being felled for commercial use on the understanding that at least two others are planted to replace each one felled. It seems to us such an obvious solution but back in the day, this concept was never applied to our housing stock. I doubt there is any country that is thriving to the extent that it can fritter all its affordable housing away because everyone can pay the "going rate".

The replacement of this housing stock is so painfully slow with one or two houses being erected here and there. However, we may be able to address the problem meaningfully here in Pensilva. The Parish Council have recently been approached by a developer who wants to build between 40 and 50 new homes on a site at the edge of the village with half the homes being "social housing" and the other half being part rent/part buy.

Whilst this idea is barely embryonic at the moment, we are looking forward to meeting with the developers this month in order to put more "meat on the bones". As can be imagined, there is so much to discuss in the way of infrastructure including school and medical facilities not to mention the provision of services to the site. That being said, I am sure there would be few people who could object to such a marvellous scheme once all concerns are fully addressed.

Hopefully next month's report can contain further information on this scheme and how you will be able to get involved.

Until then, take care.

**Steve Willis, Parish Council Chairman**

# Pensilva WI - September Meeting

We welcomed an impeccably dressed Pamela Vass, author of several books, including "Reason and Rebellion" (Women's fight for the Vote in North Devon). This was to have been called "Fire in the Belly" until she discovered that a certain Mr. Trump also had a publication under this title!

She told of Devon and Cornwall women suffragettes and suffragists – the two groups had different ways of going about raising the profile of their cause, but both led to success in the end. There was arson in Devonport, an ambush on the Prime minister on his holiday in Clovelly and many tales of women imprisoned and on hunger strike to show their passion for this cause.



Some of the facts were shocking. Suffragettes were blamed for many things including the burning of Hollerday House in Lynton (perhaps they were responsible?!) Along with this were cases of the punishment not fitting the crime, two Cornish women were given sentences and hard labour for smashing a window – yet their resolve simply strengthened. With the information from this talk, WI members felt much respect for the efforts and sacrifices made by these women.

Competitions winners:

**Flower of the month:** 1st Trish Thomas 2nd Cherry Woodhouse 3rd Irene Elliott

**A flower arrangement with purple, white and green (Suffragette colours):** 1st Jenny Rendle 2nd Frances Tucker 3rd Sue Hill

## NEXT MEETING:

Wednesday 9th October, 7.15pm in Millennium House.

**Harvest Bring and Share Supper & Auction.** All welcome.

# WI Horticultural Show Report

It was a beautiful sunny day for the 2024 Pensilva WI Horticultural Show when members and locals had the opportunity of showing off their skills in a variety of classes, including flowers, vegetables, baking, crafts, preserves and fruit. The children especially showed their prowess by sweeping the board with their entries.

The Show was opened by Parish Councillor Alan Moss, ably assisted by his wife Julie who presented the prizes to the worthy winners.

The winners of the cups are as follows:

- Pensilva WI Committee Cup for most points in vegetables, including vegetable collection – Mary Yates
- The Downing Cup for vegetable collection – Rebecca Raine.
- The Tessa Cup for pot plants – Jill Pascoe.
- The F.French-Blake Cup for flowers – joint winners, Cherry Woodhouse, Philip Grimes & Frances Tucker.
- The Albert Moore Cup for Domestic – Cherry Woodhouse.
- The Nicholls Cup for Handicraft – Sue Anderson
- The Les Morcom Cup for best photo – Will Hicks
- The Barnard Cup for most points in photography – Tina Tubby
- The Photography shield for under 15's – Will Hicks
- The Miss Lennon Cup, children 7 & under – Sophie Delbridge
- The Pensilva WI Cup for most outstanding exhibit, children 7 & under – Sophie Delbridge.
- The Parfitt Cup for children 8 & over – Henry Delbridge
- The Harry Cup for most outstanding exhibit, children 8 & over – Will Hicks
- The Pensilva WI Committee Cup for overall winner for most points, omitting vegetables – Cherry Woodhouse
- The Dr. Tregarthen Cup for most points gained in vegetable section – Mary Yates
- The Smerdon Trowel for most outstanding exhibit in pot plants – Trish Thomas
- The Bennett Cup, Opener's choice – Verna Dawe
- The Coombes Cup, Judges choice – Sue Anderson
- Member's Photography Shield – Tina Tubby
- The Gordon Bennett Trophy, most points in preserves – Alison Grimes
- The Mary Gilbert Cup for flower arrangement – Cherry Woodhouse
- The Hogan Ede Cup, most outstanding cookery exhibit – Cherry Woodhouse
- Pensilva WI Plaque, most outstanding handicraft item – Sue Anderson
- The Collins Cup for most entries overall – Cherry Woodhouse.

# Millennium House

Hi Parish Pump Readers. We had some beautiful September Sunshine and I don't know about you but it would be lovely if we could have some more lovely sunny Autumn days this October!

This month at Millennium House we have ...

**Tuesday 1st October** - Singing for Wellbeing with Clare 10am-11am (01579382341). Pensilva Badminton from 7.30pm. Both are weekly groups.

**Wednesday 2nd October** - Coach James from Kixx is calling all 2 & 3 year olds to get their fun, imaginative and active little feet into the sports hall for some active fun from 9.40am weekly book at jamesurie@kixx.org.uk. Your little ones can also join Natalie at Sing & Sign with age appropriate groups from 0 - 30 months old. Book at nataliecole@singandsign.co.uk . Liskeard Super 1's cricket will be starting up from 5pm - 6pm.

**Thursday 3rd October** - join Baby & Toddler Group with Tammy! 9.15am - 11.15am weekly during term time! Keep your eyes peeled for Tammy's school holiday special sessions! Our Lovely Laura will be starting her 1st Thursday Yoga class from 10am -11am weekly. £7. Everyone is welcome, just bring your own mat! Book now at millenniumhouse.org.uk/yoga. Join the wonderful fun at Ladies Walking Netball, weekly at 4pm, £2. Country dancing fortnightly from 7pm and Aikido weekly from 7.30pm with Ron!

**Friday 4th October** - find your creative side with Penmill Art group every Friday from 10am - 1.30pm. Everyone is welcome no matter your level of creative art! Hayley invites you to come along to the fun filled Slimming World Group from 5.30pm or join Hayley's Saturday morning session at 8am or 9.30am weekly!

**Saturday 5th October** - Autumnfest Celebration!!!! from 12 to 4pm. There will be a bouncy castle, music, beer and M2 Catering will tend to your every Sausage need! Come in traditional Bavarian dress or come casual if you like! Just come along for a fun family afternoon. Free entry (bouncy castle paid separately)

**Sunday 6th October** - Pensilva Monthly Market Day - we have crafts, baked goods, table top to farmed produce, meat and more! Free entry from 11am to 2pm. Free parking and refreshments available too! Show your support to local traders! The next monthly market will be on Sunday 10th November 2024 due to the Cornish Marathon being held on the first Sunday in November.

**Monday 7th October** - Mims Gentle Exercise welcomes you weekly from 10.30am! Join Laura's Monday Yoga session weekly from 5.30pm - 6.30pm book at millenniumhouse.org.uk/yoga or swing into Pensilva Badminton from 7.30pm weekly.

**Wednesday 9th October** - join our Pensilva W.I. from 7pm.

**Thursday 10th October** - come along to Anne's Garden Bloomers from 2pm to 4pm.

**Friday 11th October** - NHS Blood Donors will be holding a session with us today, are you booked in?

**Wednesday 16th October** - come along Bingo dabbers to Colleen & Ruth's monthly Bingo. Eyes down 7.30pm. Over 18's only!

**Friday 18th October** - join Pensilva Film Club watching TITLE. Doors open 7pm, film



starts 7.30pm.

**Wednesday 30th October** - Halloween Meal night from 5.30pm with the amazing Abi & Natalie from M2 Catering. Please book by Friday 25th October 2024 with Vanessa at Millennium House. See the poster for the menu! £18 per person.

**Thursday 31st October** - Day of the Dead Kids Halloween Disco!!! Free entry! Free snacks (it's hungry work trick or treating)! Get dressed up, go trick or treating and then head on over to party like you have no school tomorrow! starts 6pm to 8pm. Prize for Best Halloween Costume and Best Day of the Dead Costume! (Adults can come in fancy dress too!) (Warning! Strobe lighting will be used)

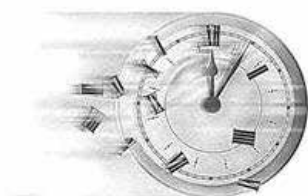
I am also already taking bookings for the Christmas Clay Play Workshop on **Saturday 9th November** 10am to 12noon. It is a family fun event where you can design and make your very own Christmas decoration or ornament or even a gift for a loved one. Paint it and have it blasted. All tools are provided and refreshments will be available on the day. Please pay £35 per person in advance to secure your booking. I am also taking bookings for the Christmas Wreath Making Workshop on **Saturday 7th December** 2pm to 4pm. All tools and foliage provided and refreshments available on the day. You are welcome to bring any foliage or decorations of your own liking. It is recommended that if you have your own secateurs, to bring them along with you. Please pay £30 per person in advance to secure your booking. Both are with the lovely Sian Bush.

For more information or to book into one of the festive fun workshops, please contact me at Millennium House on 01579 363 096 or pop in to the centre.

If you wish to book into any of our future markets the next dates are **6th October, 10th November and 1st December** from 11am to 2pm. The Christmas Market Special Weekend is on **Saturday 14th & Sunday 15th December** from 10am to 3pm. It is £5 per table. Please send me an email to [ness.mhouse@gmail.com](mailto:ness.mhouse@gmail.com) to book with details of what you would like to sell. Spaces are filling up fast! If you are not booking a stall, then come along and support your local traders and crafters! Especially on the run up to Christmas, there are so many wonderful gift ideas!

Have an outstanding October.

**Vanessa**



## St Ive Time Travel Enthusiasts Club

The inaugural meeting will be last  
Wednesday at Millennium House.

MILLENNIUM HOUSE EVENTS  
GROUP AND PENSILVA COMMUNITY  
ASSOCIATION PRESENT...



**DÍA DE  
MUERTOS  
KIDS  
HALLOWEEN  
DISCO**

**31st OCTOBER AT MILLENNIUM  
HOUSE, PENSILVA from 6pm till 8**

**FREE ENTRY + FREE SNACKS**

**COME IN FANCY DRESS AFTER TRICK  
OR TREATING...**

**PRIZE FOR BEST HALLOWEEN  
COSTUME and BEST DAY OF THE DEAD  
COSTUME**

**WARNING: STROBE LIGHTING WILL BE USED**



AT THE CHRISTMAS  
MARKET

DECEMBER  
14+15

*Pensilva*  
**CHRISTMAS  
BAKE OFF  
COMPETITION**



KIDS: 3 GINGERBREAD MEN

ADULTS: CHRISTMASSY CAKE

PLEASE BRING YOUR CREATIONS  
TO CHRISTMAS MARKET AT 10am  
ON THE 14th DECEMBER AT  
MILLENNIUM HOUSE



# Autumnfest Celebration

 **SAT** **5** **OCT** **12-4PM** 

**BEERS, BRATWURST, AND BOUNCY CASTLE...  
COME IN TRADITIONAL BAVARIAN DRESS IF  
YOU LIKE!**

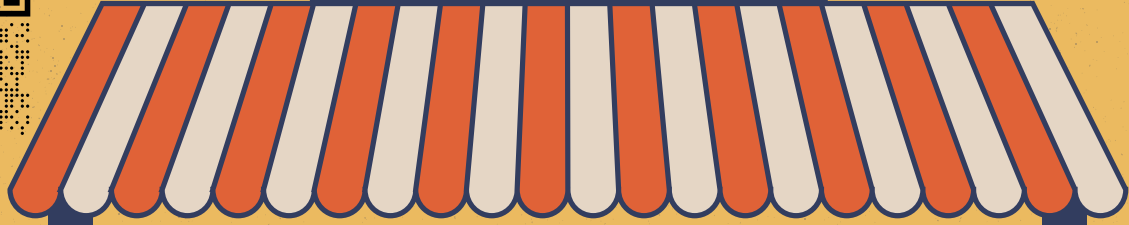
**M<sup>2</sup> CATERING WILL BE  
ATTENDING TO ALL YOUR  
SAUSAGE NEEDS!**

**AT MILLENNIUM HOUSE,  
PENSILVA PL14 5NF**

**FREE ENTRY  
(\*BOUNCY CASTLE PAID SEPARATELY)**

**FUN FOR ALL  
THE FAMILY!**

PENSILVA



Free  
Entry

Featuring local sellers,  
craft stalls, indoor carboot,  
baked treats, and live plants.  
Refreshments available and bar!

£5 per  
table



←← MILLENNIUM HOUSE PRESENTS →→

# PENSILVA MARKET DAY

**FIRST SUNDAY OF THE MONTH;  
NEXT MARKET DAY IS...**

# 6th October

**SELLERS FROM 10am; BUYERS 11am-2pm**

Call Vanessa on 01579 363096 or email  
[ness.mhouse@gmail.com](mailto:ness.mhouse@gmail.com)  
to book your table or other enquiries

Fancy something spicy for lunch instead of the usual pasty? Hui will be selling Kimchee Noodles (and jars of homemade Kimchee and chilli oil if you want more!)

**PRINCESS ROAD, PL14 5NF**



# Film Club

A good number of us turned-out last night for our September film: *The Miracle Club*. Starring the marvellous Maggie Smith, this followed the story of four ladies from Dublin in the 1960s who followed their dreams to visit Lourdes, each seeking their own "miracle".

The film gradually revealed their secrets and hurts, some of which went back many years. A lesson to us all to deal with today's problems today and not let them fester!

For October (18th) we have something slightly different: **And Then Come The Nightjars**. Our film clubs have been asked to particularly support British/locally made films and this one fits the bill being filmed in Devon (well, nearly local!). It is of particular interest to rural communities as it follows the unlikely friendship formed between a Dartmoor farmer and the vet in charge of culling his precious herd during the last Foot & Mouth outbreak.

Do come if you can - doors open at 7 for 7.30 start with The Mel bar open before and after the show. £3 for current members and £6 for renewing and new members. I know many of our regular audience need to renew their membership in October as this is the 3rd anniversary of us re-starting Film Club after the Covid pandemic.

For further information please contact Judy: [judy.two@outlook.com](mailto:judy.two@outlook.com)  
01579 208836

Judy

**Pensilva Film Club in association with C-film, part of Creative Kernow**



Pensilva Community Association and C-Fylm Present

# **PENSILVA** **FILM** **CLUB**



**FRIDAY, OCTOBER 18th**  
DOORS OPEN 7PM, FILM STARTS 7:30PM  
**AND THEN COME**  
**THE NIGHTJARS**

**£3** for C-Fylm members

Non-members can join on the door for £6, which includes your first film.



Adapted for the screen from Bea Roberts' multi-award-winning stage play, *And Then Come the Nightjars* tells the story of an unlikely friendship between a Devon farmer and the vet who is assigned to cull his precious herd..

Drama -  
1 hour 21 minutes.  
SCAN FOR TRAILER ----->



# NEIGHBOURHOOD DEVELOPMENT PLAN FOR ST IVE & PENSILVA



Many of you may have met Francis & Hannah from when attending our NDP events at Millennium House. They look after the Cornwall Historic Environment Record for Cornwall & The Isle of Scilly. It's a really great resource and interesting to look at the heritage of our area...

## Recording, Sharing and Protecting Your Heritage

Are you interested in learning more about Cornwall's heritage and helping to protect it for future generations? We are the Strategic Historic Environment Service. We look after The Cornwall and Isles of Scilly Historic Environment Record. You can use this to access information online about the archaeology and heritage of your local area, including historical maps and aerial photos, all completely free, using our online mapping website:

[https://map.cornwall.gov.uk/website/ccmap/?wsName=CIOS\\_historic\\_environment](https://map.cornwall.gov.uk/website/ccmap/?wsName=CIOS_historic_environment)



---

Here you can also review "Designations" in your area, such as Listed Buildings and Scheduled Monuments, as well as "Buildings, Sites and Monuments" which include non-designated assets. There are 45 Listed Buildings in St Ive parish, 4 Scheduled Monuments, and over 150 non-designated assets currently recorded. These non-designated sites are considered by our team to be just as important to record as the nationally designated ones. They tend to be at a higher risk of being lost and can be greatly valued by the community, adding to its sense of identity and distinctiveness. Our data is used by a wide variety of people. From those with a general interest in their local area to academics looking to study certain site types and time periods. It is also used by Planning Officers when reviewing Planning decisions.

We really want to hear from you. Our data is only as good as the information that is given to us and we rely so much on local knowledge. There are so many sites missing from our "Buildings, Sites and Monuments" map, so if you come across any that you think should be recorded, please get in touch!

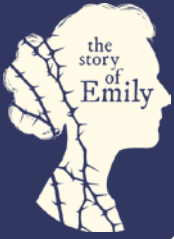
You can report a site using our Lets Talk Cornwall map insert which will provide you with a form to fill out about the site:

Don't feel put-off if you aren't entirely sure on the history of the site or any of the technical terms – what we really need is a location, a small description of what it is (if you know) and preferably a picture. We can then review this and hopefully add it to our record of heritage in your area.

We also keep a record of the condition of heritage sites so if there are any that you want to highlight to us as being at risk, you can do this on the same website. Just select "Survey" instead of "Map" on our website and a form will be generated that you can fill out with as much information as you have.

It's very rewarding and worthwhile adding sites onto the record that really mean something to the people who live there. The sharing of knowledge of these sites benefits us all so we can all understand better the places in which we live. Please get in touch!





# Neighbours Go Free

Immediate neighbours within a 2.5 mile radius of The Story of Emily, as the crow flies, will be granted free access for any day we are open in the 2024 calendar year.

Journey back in time with us and discover how one woman from this Cornish village shaped events a world away. Here, an untold chapter of UK history is brought to life.

Find out more and to book [thestoryofemily.com](https://www.thestoryofemily.com)



## Badminton at Millennium House

Monday & Tuesday 5pm - 7.30pm - Informal Badminton - £10 per hour per court, call 01579363096

Monday & Tuesday 7.30pm - 9.30pm - Pensilva Badminton Club - £5 per person, contact Richard 01579349324 or Nigel 01579363594

Wednesday 5pm - 10pm - Informal Badminton - £10 per hour per court, call 01579363096

Please bring your own rackets & shuttles or you can rent a racket and shuttles for a small charge.

### BABY AND TODDLER GROUP WITH TAMMY

Millennium House - Function Room

£2 per family

Every Thursday  
9.15am to 11.15am  
Term Time only

- ★ MAKING FRIENDS
- ★ FUN EDUCATIONAL ACTIVITIES
- ★ SNACK



### MILLENNIUM HOUSE COMMUNITY COFFEE SHOP

**Open Tuesdays,  
Wednesdays, and Fridays  
9am to 1pm (the Post Office  
is open until 11:30am on  
these days)**

We, the volunteers, opened the Coffee Shop in 2017 with the hope of giving something back to the community. The atmosphere is relaxed, making it an ideal place to enjoy meeting up with friends for a cuppa and a chat. A warm welcome is assured. We would like to say a huge "Thank You" for your continued support.

# Update on Aid for Ukraine

It has been a busy month for Nightingales UK and I am pleased to inform you that their feast night, held on the 7th September at Uphill Farm, Yelverton, raised an amazing £5,593.00.

This money helps to purchase vehicles as seen in the picture below and provides transportation to evacuate civilians to safe areas, pick up the wounded and take medical teams to the front line where they are needed. It is hard to believe that people are living below such ruins in basements with all their worldly belongings in carrier bags.

A big thankyou to all those of you who live locally or in surrounding areas, (especially a big thankyou to Mavis and church friends from Dobwalls), that have supported my car boot and table top sales.

With your help we have raised a further £1,000 to support the team and an aid drop took place on the 18th of September. The team asked if I would like to go and I felt privileged that they should ask me. As I am



writing this article prior to departure, I will let you know how the trip went in October's article.

As a way to say thank you for the enduring support that Pensilva residents have given to Nightingales UK, they have designed a sticker to put on the side of the van saying "Sponsored by the Pensilva Community in Cornwall". So, you will all be travelling with me in spirit, as we commence the four-day trip from Dover to France, driving through Belgium, Netherlands, Germany and onto the Czech Republic and Prague. The aid is dropped off here into a warehouse operated by our Koridor UA partners, who then distribute and transport the aid immediately to the front line and surrounding areas in Ukraine.

If you would like to donate medical aid or humanitarian aid, please drop off your items to the Millenium House or contact Janey Bryson for collection on Mobile: 07808663749. It should be stressed that Nightingales can only deliver items that have specifically been asked for on the list. We are now however, able to accept a wide variety of medicines as long as they are not controlled drugs. Usually, restricted controlled drugs have CD written in red on the packaging and are items such as morphine. The list of aid required is given below.



If you would like to donate money please go to: <https://gofund.me/bfe0368f>.

If you would like to donate a long wheel base 4 x 4 vehicle, please email [nightingalesuk@gmail.com](mailto:nightingalesuk@gmail.com)

The resilience and strength of the Ukrainian people despite the hardships is inspiring to say the least. In the crossfire of war, there are always innocent victims. One of our team wrote, *"Kindness knows no borders and love for our fellow man, speaks a universal language. Together we can paint a tapestry of compassion and unity that transcends miles and cultures"*. I think that just about sums it up. God bless.

**Janey Bryson**

Nightingales UK are currently asking for donations of the following Medical Aid:

#### **Equipment**

- Collars
- Dressings/Bandages
- Splints
- Syringes
- Crutches
- Eye Wash/Eye Dressings
- Wheelchairs
- Inhalers
- Walking Frames
- Blood Pressure Monitors
- Gauze
- Blood Sugar Testing Kits
- Plasters
- Dressings for Burns/Burns Gel
- Wound Closure Steri-Strips
- Sutures
- Procedure Packs
- First Aid Kits
- Blood Sugar Testing Kits
- Scissors
- Syringes
- Feeding Tubes

#### **Aid to Support the Paramedics Providing Front Line Response**

- Waterproof boots and Winter Jackets
- Torches
- Power banks to charge phones etc
- Metal Detectors

#### **Over the Counter Medicines and Unused In-Date Medication with the Exception of Controlled Drugs**

- Paracetamol
- Ibuprofen
- Immodium/Dioralyte
- Decongestant Nasal Sprays
- Vicks/Strepsils
- Disinfectants
- Antihistamines e.g. Piriton, Loratadine, Cetirizine

#### **Humanitarian Aid**

- Childrens Nappies
- Baby foods/wet wipes
- Childrens Mixtures i.e. Calpol/Cough medicines
- Infant formula (6 months)
- Childrens Purees (Vegetable, fruit, meat)
- Childrens/Adults Hygiene – Shampoo, Soaps, toothpaste, toothbrushes
- Feeding Bottles
- Dummies/teething rings
- Adult incontinence pads (S, M, L)
- Disposable Nappies
- Adult Shampoo, Soap, Toothpaste, Toothbrushes
- Washing powder
- Washing up liquid
- Toilet paper
- Sanitary Pads
- Tin Canned Food (Vegetable, Meat, Fruit)
- Cereals, Pasta, sugar
- Tea/Coffee

Thank you all.

# Unity Methodist Church



Unity  
Methodist  
Church

Sunday 6th October 11.15am - United Service at Parish Church.

Sunday 13th October 10.30am - United Service at Village Hall led by Norman Rowe. Joint Macmillan Coffee and cake afternoon at Parish Church 2-4pm. All Welcome

Sunday 20th October 11.15am - United Service at Parish Church. 6pm United Sankey evening at Bealbury.

Sunday 27th October 10.30am - United Service at Village Hall led by Linda Eastlake.

Chattermakers craft group will meet at Village Hall on Thursday evenings once a fortnight, For more details please contact Kathryn on 01579 382334.

PENSILVA WI would like to invite you to an open evening on

**Wednesday 8th January at 7.15pm**

in the function room of Millennium House when Tony Rea, a contestant on the 2023 series of The Great British Sewing Bee, will be telling us about his time on the programme, and showing us some of the garments he made.

There will be a small charge of £5.00 per person which will include tea/coffee and biscuits, pay on door.

To book your place please contact Alison Willis on 01579 362505 or email [gretel1950@gmail.com](mailto:gretel1950@gmail.com).



# St Ive Church

October 6 <sup>th</sup>	Morning service	11:15am in church
October 13 <sup>th</sup>	Chapel service	10:30am in village hall
October 20 <sup>th</sup>	Holy communion	11:15am in the church
October 27 <sup>th</sup>	Chapel service	10:30am in village hall

## Other events:

October 13 <sup>th</sup>	MacMillan coffee morning in the afternoon 2-4pm all welcome. Tea, coffee, and delicious cakes
--------------------------	---

A date for your diaries: Johnny Cowling will be returning to the church for a "Christmas with Cowling" on Friday 20th December.

First time back with us since the pandemic. Always an enjoyable night and a good way to start Christmas. Tickets available soon.

We are delighted to see "The Story of Emily" opposite the Church now fully open and don't forget if you live within 2.5 miles you can visit for free as many times as you like right up to the end of the year. You just need to show proof of address.

# St John's Mission Church

## Services for October 2024

Sunday	6 <sup>th</sup>	11.00 am	Holy Communion
Sunday	13 <sup>th</sup>	11.00 am	Morning Worship
Sunday	20 <sup>th</sup>	11.00 am	Harvest Festival
Sunday	27 <sup>th</sup>	11.00 am	Morning Worship

**Thursdays** 10.00 am Morning Prayer Fellowship

### **OCTOBER EVENTS** Please see posters for full details

Thursday	3 <sup>rd</sup>	12.00 - 1.30 pm	Baked Potato Lunch
Wednesday	16 <sup>th</sup>	3.00 - 5.00 pm	Good Grief Café
Sunday	20 <sup>th</sup>	3.45 - 5.00 pm	Tea Time Church for Families
Thursday	24 <sup>th</sup>	2.00 - 4.00 pm	Memory Cafe
Tuesday	29 <sup>th</sup>	2.00 - 4.00 pm	Stitch, Knit & Natter
Thursday	31 <sup>st</sup>	6.00 - 7.30 pm	Light Party

*For further details, to arrange transport or if you know of any illness or need in the village, please call Geoff, 362698 or Frances, 363718*

# St John's Mission Church

Princess Road Pensilva PL14 5NF



THE CHURCH  
OF ENGLAND

## The Tribute Cluster of Churches

**Contact for Baptisms & Marriages**

**Reverend Li Selman 07790 272714**

[revliselman@gmail.com](mailto:revliselman@gmail.com)



**Church Wardens**  
**Geoff & Carolyn Cox**  
**01579 362698**





**Tuesday  
29<sup>th</sup>  
October**

**St John's  
Mission Church  
Pensilva**

**on the  
last Tuesday  
of the month**

**2.00**

**to**

**4.00 pm**

**Contact Kathleen  
01579 363686**



**stitch  
knit and  
natter**

**Do you enjoy stitching,  
knitting, crocheting?**

Join our friendly knit and natter group.  
Come and meet new friends and swap tips  
and ideas – all ages and abilities welcome!

Drop-in!

There is no charge  
for this activity but there  
is a Donation Box if you  
would like to make a  
cash contribution.

**Pensilva**



**MemoryCafé**

**Thursday 24<sup>th</sup> October  
2.00 to 4.00 pm**

If you have  
memory problems  
or  
you are a carer  
for somebody  
who does  
and  
would like to  
meet others  
who understand  
your situation  
then join us at  
St John's Church

**Contact Geoff 01579 362698**

# Teatime Church



For children and their families  
**Playing Games**  
**Singing and Praying Together**  
**Sharing a Bible Story**



**Sunday 20<sup>th</sup> October**  
**3.45 pm**  
**St John's Mission Church**  
**Pensilva**

## Eating Tea

For more information  
contact: Rev Li Selman  
[revliselman@gmail.com](mailto:revliselman@gmail.com)

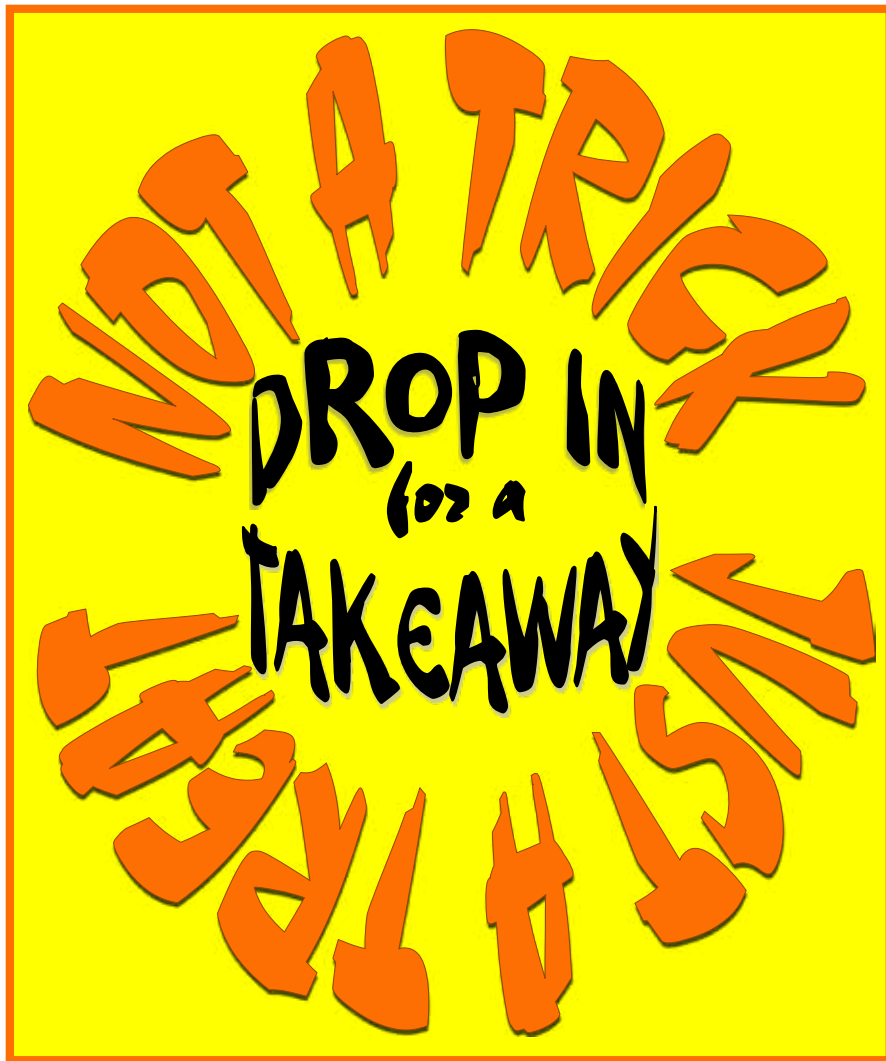


*For the fruits of His creation, thanks be to God*

*St John's Mission Church Pensilva*  
*Harvest Festival*



*Sunday 20<sup>th</sup> October 11.00 am*



St John's Mission Church  
Pensilva  
Thursday 31<sup>st</sup> October  
6.00 pm to 7.30 pm

Games  
Craft Activities  
Family Funtime  
Hot chocolate drinks  
and marshmallows

Celebrate God's  
light in our lives

Everyone  
welcome



## BAKED POTATO



## LUNCH

BRING and BUY STALL  
St John's Mission Church  
Pensilva

Thursday 3<sup>rd</sup> October  
12.00 to 1.30 pm

Donations in aid of church work in our community

Pensilva W.I  
MacMillan  
Coffee



and Cake Morning.

Saturday 5<sup>th</sup> Oct.

10.30.am to 12

The Village Hall, Pensilva.

Bring and Buy.

Raffle.

£4.00 entry to include coffee and cakes.

All welcome.

# Gardening Club Report

On Monday 2nd September we welcomed Liam Shoemsmith from Radio Cornwall. Liam began by telling us about his Podcast which is, unsurprisingly about gardening! It's called "Now You're Gardening" I would certainly recommend giving it a listen.

Liam said his talk was gardening for nature and wildlife...with a bit of waffle in between. I can tell you now, there wasn't any "waffle" - it was a magnificent, informative & thoroughly enjoyable talk.

Liam took us back 10 years ago when he moved house. He cleared conifers, brambles and lots of vegetation so he could make a garden out of the area that was known as "the garden". After cleaning he saw the soil was nothing more than sub soil. So he got some sheep dung, mixed it into the sub soil and before long the soil was good soil - all it took was some organic matter! After this the "no nature garden" transformed into a nature loving garden.

We thought that was the end of the "past" but Liam went even further back to the time of Henry VIII - we didn't realise he had much to do with gardening but we listened intently. It turned out the connection was trees, oak trees to be exact. Henry VIII used oak tress to built his fleet of ships & his palaces. In an oak tree there are 650 different animals, 3,500 different forms of life ranging from bugs to fungi to squirrels and much more in between. So, with the huge felling of oak trees 3,500 different forms of life had a decreasing habit at a very rapid rate. Luckily for them different forms of materials were discovered.

Liam was keen to show us how gardeners have a (sometimes unknown) positive impact on nature & wildlife. In the 1950s there were 30 million hedgehogs, in 2019 this number was only 1 million. Hedgehogs like mess; they like the verges of woodland. There is now more awareness of this so gardeners aren't being so neat and tidy for which the hedgehog population are very pleased.

In the Victorian era goldfinches were second on the concerned list. This was largely due to the popularity of having the stunning looking bird in cages in homes. However, the goldfinch had a resurgence when the popularity died down. Then came the cutting down of crops earlier in the year. For a seed eater the goldfinch struggled again and numbers decreased. Again they were on the concerned list. Thanks to gardeners the goldfinch started to increase again. Gardeners leave teasels, sunflowers, and other seeding flowers to go to seed. The love of having dry teasels means the goldfinch can get the seeds. Between 2002-2012 the goldfinch population increased by 80%, which is believed to be down to gardeners.

As we heard earlier good soil creates a nature loving home in a garden. Liam explained that it is the place to start for a wildlife friendly garden. For example good, healthy soil means plentiful worms and bugs. Worms and bugs are food for a lot of wildlife so they will encourage them to visit. Pollinators love flowers, the longer they can be around the better. Plants with flowers which repeat are a favourite like verbena and fuchsia. Colder months flowering plants such as thistle, anemone and hellebore are extremely important as bees and butterflies wake up if the temperature rises so they will need to eat. As these types of plant become more popular so the bees and butterflies are supported by gardeners.

This talk was fascinating and a great insight to how gardeners are important to nature and wildlife.

Next meeting  
**Monday 7th October**

A talk by Rai from Plant One Cornwall - tree planting in Cornwall

St Ive Village Hall (PL14 3LZ) at 7:30pm  
We welcome visitors!

**[stivegardeningclub@gmail.com](mailto:stivegardeningclub@gmail.com)**

---

## FOURTEEN+ YEARS OF WILDLIFE WATCHING IN THE PARISH OF ST. IVE

Since moving to the Parish at the end of 2009, I have been photographing and recording the wildlife which I see at my home on the edge of Pensilva on a daily basis. This month I am sharing with you my excitement at seeing a bird I had never seen before and will probably never see again...

...THE WRYNECK.



In my haste to get some photos, I took a number of blurry images! The one above was the only sharp one, but does not have its head turned in my direction, despite being a bird which can turn its head through almost 360 degrees. It does however show the wonderful pattern in greys and browns on its back. My apologies for the quality of the other photo inserts, though they do show it's stance. This relative of the woodpeckers has a less strong beak than the rest of the family and is smaller than a blackbird with the literature describing it as 'sparrow sized'.

Wrynecks used to be a common bird in Great Britain, but a decline their numbers began in the mid 19<sup>th</sup> century. By the late 2070s / early 80s, there were no remaining breeding pairs. Although there was a brief return in Scotland, this was not sustained. With very rare individual reports of nesting it is now classified as a non-breeding species here. As a rarely seen visitor when on migration in spring and autumn, it has protected status. Most recorded sightings are on the south and east coasts. There are thought to be less than 300 wrynecks passing through the country each year.

Their preferred habitats are open woodland and orchards. Wrynecks perch in trees, but do not climb the trunks looking for grubs like their cousins. Their favourite food is ants and their larvae, which they usually forage for on the ground, collecting them on their sticky tongues which are long enough to probe into crevices and ant nests.



Like other woodpeckers they nest in holes, but with their less strong beaks do not usually excavate them themselves. They will use abandoned holes left by other birds and will also happily use bird boxes. Whilst they are very noisy during courtship, wrynecks will fall silent once the eggs are laid. Leaving their chosen cavity unlined, they will lay between 7 and 10 white eggs which will take 12 to 14 days to hatch. The young birds will fledge 18 to 22 days later. It is not uncommon for wrynecks to raise a second brood.

Although no longer resident here, the wryneck still does well in eastern and southern Europe and on into Asia where it is found as far afield as Japan. They tend to nest at higher altitudes across both continents. However, a similar decline to the one seen here is being observed in western and central Europe. Many of those seen in the UK are thought to come from Scandinavia. It is not clear whether the declines are related to changes in land usage here, or to problems in Africa.

European wrynecks winter in Africa and return north in the spring at about the same time as the cuckoo. In times past when they were common here, this gave them the nickname 'cuckoo's mate' or 'cuckoo's messenger'. The facts that it can turn its head so far and that it can hiss like a snake when disturbed, led to more ancient names such as 'twister', 'writhe neck' and 'snake bird'.

I wonder if my wryneck visited any other gardens in the area? If so, I'd love to hear about it, so do send me an e-mail via the editor. In the meantime, there is so much to learn and enjoy from the regulars visiting our gardens, farmland and moorland. It's too easy to take them for granted, so...



HAPPY WILDLIFE WATCHING!

Hilary

**St. Ive Village Hall, The Cross  
PL14 3LZ**

# HALL HIRE

**£5 an hour**

Includes use of the kitchen and electric (except wall heaters, which are on a £1 coin meter)

For bookings ring Amanda 077 033 930 70

## Regular Group and Activity Timetable

Group	Date and Time	Contact details
Gardening Club	1 <sup>st</sup> Monday monthly 7.30pm	stivegardeningclub@gmail.com
St. Ive Snooker Club	Mondays and Thursdays 7pm	01579 382315 R. Bunkum
Mobile Post Office	Wednesday 10.30 - 11.30am	
Village Coffee Morning	Wednesday 10.30am - 12	
Methodist Sunday Service	Check timetable in Parish Pump for services	Kathryn or Keith Mutton 01579 382334
Chattermakers Chat and Craft	Thursdays Fortnightly	Kathryn 01579 382334
Fit On the Floor Fitness Class	Tuesdays 7pm to 7.30pm	07597383171 Facebook @jemfitnessliskeard

**St. Ive Village Hall, The Cross**

Liskeard PL14 3LZ

## Tea with Santa



Meet Santa, stay for tea, a story, and a selection box from Santa.

**Saturday 7<sup>th</sup> December £10 Per Child. Must be booked: Amanda Eveson 07703393070**

**St. Ive Village Hall  
The Cross PL14 3LY**



**Christmas Carols in the Hall**

**Date: Friday 13<sup>th</sup> December**

**Time: 7.00pm**

**Mince pies and refreshments**



## St. Ive Village Hall

The cross Liskeard PL14 3LZ

**FAMILY SPOOKY HALLOWEEN  
SLEEPOVER IN THE HALL.**

GAMES, SUPPER, MUSIC

BRING YOUR CAMP BEDS AND BEDDING

Date: Fri 25<sup>th</sup> Oct Time: 8pm til 8am Cost: £10 pc

Children must be accompanied by an adult.

Bookings: Amanda 07703393070





**St. Ive Village Hall  
The Cross, St. Ive  
PL14 3LZ**

**1st Monday of the month  
7.30pm**

**New members welcome**

**Email: [stivegardeningclub@gmail.com](mailto:stivegardeningclub@gmail.com)**



St Ive Church would welcome anyone interested in learning to ring the bells.

Practice night every Wednesday  
7:30pm- 8:30pm

Contact:  
Jeanne 363228 or Jenny 389201



## St. Ive Village Hall PL14 3LZ Snooker Club



**Monday and Thursday Evenings**

**7pm**

**Contact Ray Bunkum**

**01579 382315**

## Singing for well-being

Fun singing session All welcome!  
Very simple songs to relax, uplift and connect. No experience needed.

**10-11AM TUESDAYS**

**CRAFT ROOM, MILLENIUM HOUSE  
PENSILVA  
£5/session**



**FOR FURTHER INFO, TEL:  
CLARE 01579 382341**

# Coming Up at the CAVe

**ALERT:** The good things in life don't come free, and it looks as if the monthly CAVe films might become a thing of the past. Audience numbers were very healthy until the Covid pandemic, since when they have not really recovered to an extent where the showings are viable: film hire, licence fees and hall hire all need to be met and any shortfall has to be covered from the Callington Community Arts budget. All our films are chosen as being highly acclaimed at the major award ceremonies or having received national box office success; the Council Chamber is an ideal venue which provides a cosy and intimate space to enjoy great films with other cinema-lovers. See our website [callingtoncave.weebly.com](http://callingtoncave.weebly.com) for more details.

THE 4<sup>th</sup> THURSDAY IN THE MONTH IS FILM NIGHT IN CALLINGTON

Join us in October for:

## “THE LOBSTER”

*Running Time: 1hr 58 mins*

*Oscar Nomination for Best Original Screenplay*

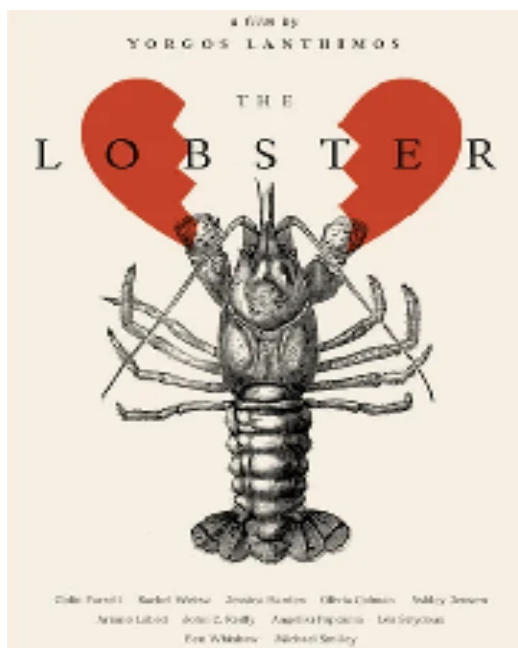
**Comedy**

**Thriller**

**Drama**

**Romance**

**Sci-Fi**



In a dystopian near future, according to the laws of The City, single people are taken to The Hotel, where they are obliged to find a romantic partner in 45 days or they're transformed into beasts and sent off into The Woods.

*“The Lobster is an uncanny and bizarre cinematic experience. Lanthimos may prove to be one of the most original directors of the twenty-first century.”*

*“‘The Lobster’ is one of the most unique films I’ve seen in a decade. The premise is not only bizarre, but it features some wonderful irony about the absurdity of relationships.”*

*“Unique and refreshingly original both in concept and style.”*

*“Colin Farrell is paunchy and hilarious in a surreal, unpredictable comedy...”*

**Thursday 24<sup>th</sup> October**

**7.30pm**

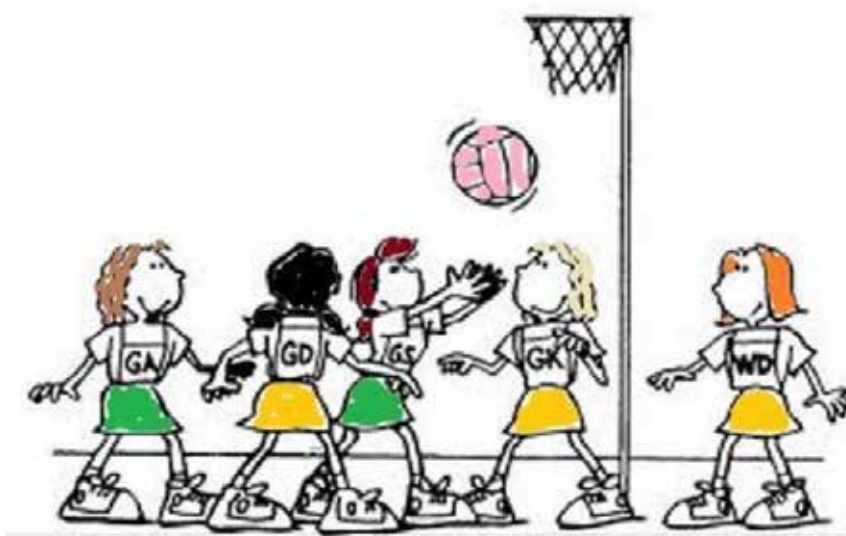
**Callington Town Hall Council Chamber**

Doors open at 7.15pm for membership registration

**Members' entrance: Adults: £4 U18s: £3**

**Ever tried...  
Ladies Walking Netball?**

**Come along to Millennium House, Pensilva**



**Thursdays  
4.00pm - 5.00pm**

**£2 per session**

**For further info contact [rosemaryfarley@gmail.com](mailto:rosemaryfarley@gmail.com)  
or Tel. No. 01579 384810**

***All Being Well***

**We are still open for three mornings a week. A maximum of six members can now attend at one time.**

**Opening hours:**

Monday, Wednesday and Saturday, 9am to 1pm.

Maximum six members at a time for each of three slots within each session: 9:00 to 10:20, 10:20 to 11:40 and 11:40 to 13:00

**Prior booking is essential**

To book yourself in or for any enquiries, call in at the gym or telephone on **01579 363890**, during the opening hours listed above.

**23 years working in our local community to improve health, fitness and well being.**

# THE MEL BAR OPENING HOURS

**Monday: Closed**

**Tuesday-Saturday: Open 5 - 10:30pm**

**Sunday: 12 - 5pm**

Under 18s are welcome in the bar with an accompanying adult until 9pm.

Pool table available most nights.

Dogs also welcome.

**ROYAL  
VOLUNTARY  
SERVICE**

## **RVS WEDNESDAY CLUB, PENSILVA**

Meeting in the village hall every 3rd Wednesday of the month. Entry £2 which includes raffle and refreshments, 2pm to 4pm.

**Wednesday 16th October - Harvest auction**

**Wednesday 20th November - Alison Willis on China**

Everyone Welcome. For further information please contact:

**Cherry Woodhouse (Chairperson) 01579 363674**

**Jane Hall (Secretary) 01579 363379**



## **Struggling with Sight Loss?**

iSight Cornwall offers practical help to people living with sight loss in Cornwall including:

Low Vision: Advice for low vision aids

Assistive Technology: Advice on products

Benefits Advice: Assistance to claim entitlements

Equipment Demonstration: Advice on gadgets

Social Clubs & Activities: Links to clubs & activities in the county

For more details Telephone 01872 261110 or visit

[www.isightcornwall.org.uk](http://www.isightcornwall.org.uk)

## MELODI LISKERRET

- A mixed group, singing a variety of well known numbers including Folk & Cornish songs.
- Local to you!
- Weekly rehearsals in St. Ives – Gorfenna, PL14 3LX
- Friendly informal rehearsals with a tea break and biscuits!!
- **Free one-to-one professional singing tuition within a few weeks of joining!!**

For more information, please contact Gerald, secretary, on 01579 363881 or email: [charaton@btinternet.com](mailto:charaton@btinternet.com)

## PENSILVA VILLAGE HALL

We are now open and back in business!

Anyone wishing to book the hall for meetings, birthday parties or fundraisers, please contact Peter or Jackie Browning on **01579 363212** or email [peterpensilva@gmail.com](mailto:peterpensilva@gmail.com)



Please note that as well as hall rent there is a coin meter for heating at 60p/hr.

## MOBILE LIBRARY SERVICE

Next visit to Pensilva is  
**FRIDAY OCTOBER 18<sup>th</sup> 10:25-10:45**  
outside Victoria Inn

The county library services visits every four weeks on Friday. You can browse the shelves, or pre-order books using the link (scan the QR code on the right):



<https://www.cornwall.gov.uk/libraries-museums-and-archives/libraries/mobile-library/>

# NC TREE SURGERY



## Expertise in all kinds of tree work

- Tree felling, dismantling & pruning
- Hedge Cutting
- High quality work
- Left clean and tidy
- Full removal and chipping available
- Fully qualified and insured

Please call or email  
Neil Cloake for a quote

**City & Guilds**

Qualified and insured local tree surgeon

**NPTC**  
Qualified



**07855 461 483**



**nctreesurgery@yahoo.com**



# CASTLE VETS

Local independent veterinary practice

Pets & Farm

**NOW OPEN**

Monday - Friday

8.45am - 6pm

6B Heathlands Road, Liskeard, PL14 4DH



[liskeard@castlevets.org](mailto:liskeard@castlevets.org)  
**01579 208072**





# Group Travel

Day Trips & Coach Holidays

## BODMIN MOT CENTRE

Enterprise Park, Midway Road, Bodmin, Cornwall PL31 2FQ Tel: 01208 77989

### Coach Excursions & Tours 2024

9th October	Goosey Fair, Tavistock
2nd November	Bridgwater Carnival
16th November	Longleat Festival of Light
<b>22nd - 25th Nov</b>	<b>Turkey &amp; Tinsel - Bournemouth</b>
30th November	Bath Christmas Market
7th December	Exeter Shopper & Christmas Market
15th December	Cornish Christmas Lights

Call: 01208 77989 for bookings & brochure  
website: [www.grouptourcoachhire.co.uk](http://www.grouptourcoachhire.co.uk)



### Bodmin MOT Centre



Call: 01208 77989 to book appointment  
website: [www.bodminmotcentre.co.uk](http://www.bodminmotcentre.co.uk)

Garage Services & MOT Testing Station  
Classes 4, 5 & 7  
Servicing & Repairs  
High Vehicles & Motorhomes  
Brake Test & Headlight Alignment  
Wheel Alignment & Tracking  
Pre MOT Inspections  
Annual & Interim Vehicle Servicing  
Commercial interim inspections

## Trystan Phillips

### Carpentry/Joinery & Property Maintenance



Advanced craft  
Qualified



37 years' experience

All aspects of Carpentry undertaken including:

Bespoke Carpentry & Joinery  
Kitchen Installations

Doors, Partitions, Skirtings, Architraves, Shelving  
Timber Floors renewed/repaired, Laminate Floors fitted  
Timber Windows repaired including 'Sliding Sash'

Plus General Property Maintenance:  
Including Painting/Tiling and much more!

**Fully insured**  
(Including Public & Product Liability)

07397 153792    [trystanphillips carpentry@gmail.com](mailto:trystanphillips carpentry@gmail.com)    01579 363150





# GENERAL GARDEN & HOUSE MAINTENANCE



**NO JOB TOO SMALL**

Call to discuss your requirements.  
**NO OBLIGATION** quotes given.

One off jobs or regular work catered for.

Here are some examples...

**OUTSIDE**

**MOWING**

**HEDGE CUTTING**

**FENCE PAINTING**

**BOARDER WEEDING**

**PATIOS & DRIVES**

**CLEANED**

**INSIDE**

**WINDOWS CLEANED  
INSIDE & OUT.**

**PAINTING**

**CLEANING**

**SHOPPING**

**IRONING**

**CALL ANDREW CARLIN**

**now on:**

**07407 323888**

*Thank you.*



# Colin Swinburne Electrical Services



All aspects of domestic and commercial electrical work.

Inspection and testing (EICRs), fault finding, new installations, rewires, consumer unit replacement, additional sockets, lighting upgrades, garden power and lighting, extractor fans and more.

**Local Electrician in Pensilva. Free advice and quotes.**



4.9 ★★★★★ Google reviews

**CSES@btinternet.com • 07974 499138**

## J. J. Child

**Plumbing and heating engineer.**  
Oil appliance service,  
repair and breakdowns.

**40 years' experience.**

**Call John:**  
**01579 362336**  
or  
**07837 921086**



## PENROSS

Rosecraddoc Lodge Holiday Bungalows  
(Between Pensilva & Liskeard)  
Perfect for family & friends coming to visit!



Sleeps 4  
Sorry no pets or smoking  
Tel: Julie 01579 362221  
Email: penhargetfarm@gmail.com



**R**ight-on   
**P**lumbing &  
**M**aintenance

*Gareth Haimes*

**Tel: 07947353682**

**KILN DRIED  
FIREWOD**

**MATTHEW**

**07884 112692**



**Window Cleaner**

**Window Cleaner**

**Also any upvc cleaned**

**i.e. fascias, gutters, etc.**

**gutters cleared & unblocked**

**Please phone Rob**

**01579 384435**

**079 9099 6886**

**Window Cleaner**

**Window Cleaner**



## Local Accountant offering fixed fee accounting services

With over 25 years experience, I am a fully qualified, friendly, local accountant

- ✓ Annual Accounts for Sole Traders and Partnerships
- ✓ Book Keeping & Payroll
- ✓ Personal Tax Planning
- ✓ Company Accounts
- ✓ Business Support & Advice

- ✓ Self Assessment tax returns
- ✓ iXBRL tax filing
- ✓ Tax investigation Fees Insurance
- ✓ Company Secretarial work
- ✓ Tax calculations for Sole Traders and Partnerships

Kate Vaughnley FCCA - Chartered Certified Accountant

Website : [www.kvaccountingsolutions.co.uk](http://www.kvaccountingsolutions.co.uk) or Email : [katevaughnley@gmail.com](mailto:katevaughnley@gmail.com)

Telephone : 01579 532622 / 07725 004152

# Matt's Windows

## Repair of Windows, Doors & Glass Unit Replacement

Making draughty windows great again!

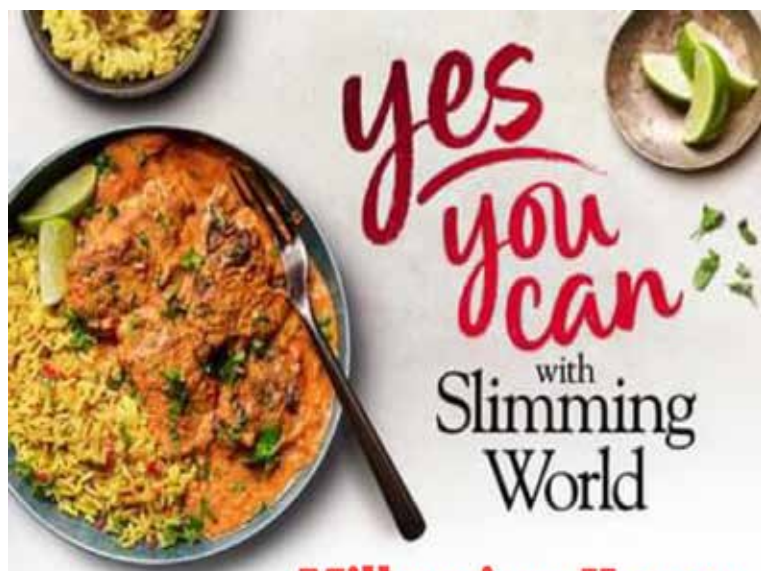
**T: 01579 641228**

**M: 07533 387368**

# SEASONED LOGS



Telephone Jonathan  
Mobile 07966 070725  
or  
01579 363157



**Millennium House**

**Friday 5:30pm**

**Saturday 8am & 9:30am**

**Hayley 07966370233**

slimmingworld.co.uk 



## Charlotte Louise Nails Liskeard

Check out my social media  
for the latest promotions  
and inspiration

07 435 706 183

charlottelouisenails@hotmail.com



@charlotte.louise.nails



@Charlotte Louise Nails

10% discount when using  
code NLP10  
Book Now using this QR code



## NICOLA GREENE

BSc (hons) Podiatry MChs

HPC Registered Chiropodist/Podiatrist

**Home Visit Practice treating all  
your foot care needs:**

- Nail Cutting
- Corns and Calluses
- Thickened Nails
- Dry Cracked Skin
- Verrucae
- Foot Pain
- Diabetic Foot Assessments
- Wound Care

**T: 01579 590027**

**M: 07786164205**

**E: nicki\_greene@yahoo.com**



Domestic Electrical  
Property Maintenance  
Interior & Exterior Work  
Carpentry :: Decking  
Kitchens :: Bathrooms  
Wall & Floor Tiling  
General Plumbing

**MCCARTHY PROPERTY MAINTENANCE**

**Electrical Safety Register**  
incorporating  
ELECTSA + ECA  
Certification Ltd

HIGHLY REGARDED LOCAL BUILDER  
COMPETITIVELY PRICED  
COVERING THE SOUTH WEST

Contact Dominic

07968 599 675

01579 362 945

[info@mccarthypropertymaintenance.co.uk](mailto:info@mccarthypropertymaintenance.co.uk)

[www.mccarthypropertymaintenance.co.uk](http://www.mccarthypropertymaintenance.co.uk)

## Debbie Hicks - Counselling and Psychotherapy

*Caring, confidential counselling for all.*

*I work in a therapeutic relationship to help you understand yourself better.*

*I offer a warm, approachable, relaxed environment for you to untangle your thoughts and emotions.*

[www.debbiehickscounselling.co.uk](http://www.debbiehickscounselling.co.uk)

Email: [debbiehicks10@gmail.com](mailto:debbiehicks10@gmail.com)

**07851 133782**

*More info on my website or by contacting me.*



**KERNOW ARCHITECTURAL SERVICES**

- Architectural Design
- Planning Permission
- Class Q Specialists
- Building Regulations
- Project Management
- Building Conservation

[www.kernowarchitectural.co.uk](http://www.kernowarchitectural.co.uk)


[enquiries@kernowarchitectural.co.uk](mailto:enquiries@kernowarchitectural.co.uk)

**Telephone: 07398736726**

Parade House, The Parade, Liskeard, Cornwall PL146AH

# PensilvaCars

01579 363516

- ✓ MOTs Class 4
- ✓ Service
- ✓ Repair
- ✓ Tyres
- ✓ FREE Courtesy Car
- ✓ Car & Van Sales
- ✓ Diagnostics
- ✓ Air Conditioning
- ✓ 

**We have offered a supply, fit & balance of tyre service for 10 years at competitive prices.**

**Most of our tyres can be supplied the same day.**

**LOCAL RECOVERY £45.00**

**[www.pensilvacars.co.uk](http://www.pensilvacars.co.uk)**

**[pensilvacars@hotmail.co.uk](mailto:pensilvacars@hotmail.co.uk)**

We can service and repair your car to manufacturer specification, keeping your dealer warranty without main dealer expense.





# Pensilva & St Ive Post Office Service

**Pensilva:** Through the coffee shop on the 1<sup>st</sup> floor of Millennium House

**Tuesdays:** 9 to 11:30am

**Wednesdays:** 9 to 11:30am

**Fridays:** 9 to 11:30am

**The Millennium House  
coffee shop is also open on  
these mornings.**

.....  
**St Ive:** At St Ive Village Hall

**Wednesdays:** 10:30 to 11:30am

**Coincides with the St Ive  
Village Hall Coffee Morning**

# Pensilva Stores

## Amazing Value



- ✓ Fantastic Special Offers every month!!! (See store leaflets)
- ✓ Come and Check out our great deals on Wine, Beer and Spirits
- ✓ Local Produce: Homemade Butter and Clotted Cream, Meat from our local butcher
- ✓ Cornish Fresh Fruit and Vegetables
- ✓ Fresh Bread, Pasties and Cakes
- ✓ Take Away Coffee, tea and hot chocolate
- ✓ Newspapers and Magazines, Greeting Cards
- ✓ Paypoint, Lottery

**Friendly Staff + Service with a Smile !!!**

**Pensilva Stores is a family run business who have been serving local people and visitors for more than 21 years.**

Higher Road, Pensilva, Liskeard, Cornwall PL14 5NQ

Tel: 01579 362547

