

MAY, 2024

THE PARISH PUMP

Newsletter for the Parish of Pensilva and St Ive



© Susie Dickinson - NMM23 Participant



Let it grow



Join Plantlife's No Mow May movement

Visit plantlife.org.uk/nomowmay

DISCLAIMER

The articles appearing in this magazine do not necessarily represent the views of the Parish Council nor of the Parish Pump Editor.

Parish Councillors Telephone List

Alan Moss (chair)	01579 362064	Marlene Carr	01579 362919
Rosemary Farley	01579 384810	Martin Corney	01579 382450
Tony Hodson	079 7353 6964	Nigel Gisby	01579 363096
Paul Mann	01579 363757	Nigel Libby	079 6889 1814
Ivor Vaughan (vice chair)	079 7993 4604	Patricia Steer	01579 363096
James Bruce	074 1119 2645	Craig Vaughley	01579 364083
Steve Willis	01579 363096		

Your Cornwall Councillor is **Sharon Daw** - 078 3737 9305 cllr.sharon.daw@cornwall.gov.uk

Meetings of St Ive Parish Council

Meetings are held on the second Monday of every month, except August and December when no meeting is held. Please see the website for meeting dates, agendas, and minutes.

<https://st-ive-parishcouncil.gov.uk/minutes-agendas/>



Devon & Cornwall
POLICE

Police Community Neighbourhood Office

Your Community Support Officer is PCSO Steve Edser 30173
Email: CIOsnbmlst@devonandcornwall.pnn.police.uk

To report a crime call 101 or go to www.devon-cornwall.police.uk

In an emergency call 999

Contact Details for St Ive Parish Council and Millennium House

Address for correspondence:

Millennium House, Century Square, Pensilva PL14 5NF

General Parish matters should be raised initially with the Parish Clerk, Jenny Hoskin, who will present them to the Parish Council
01579 363096, email: **stiveparish@btconnect.com**

For finance matters for the Parish and Millennium House, contact
John Body
01579 362102, email: **millenniumhouseadmin@btconnect.com**

Millennium House enquiries and reservations to Vanessa
01579 363096 email: **ness.mhouse@gmail.com**

Parish Pump Submissions

Via email only to **stiveparishpump@gmail.com**

The deadline for submissions is the 18th of the month. Please email your text submissions directly in the email body, and attach any images. Full, half, or quarter page designs can be sent as JPG, PNG, or PDF files.

Advertising Costs

Please note that all advertising must be paid for prior to publication.

Two months free when purchasing for a year.

Quarter page: £10 per month, or £100 for 12 months

Half page: £20 per month, or £200 for 12 months

Full page: £33 per month, or £330 for 12 months

(All prices are inclusive of VAT)

Letter from the Editor

This month is “No Mow May”, in which we’re all encouraged to leave those lawns alone for a month to benefit the wildlife, and particularly, pollinators—without whom we wouldn’t have anything to eat, which sounds quite important. Personally, I do a “No Mow Year”, but that’s mostly out of sheer laziness. We cut paths to the places we need to get to, and everything else can do as it wishes.

Did you know that the concept of a grass lawn only came about in 17th century England? It was a way for rich folk to show just how rich they were that they could waste their vast acreage of land, and even pay someone to cut it for them! It was the ultimate display of opulence. Meanwhile everyone else needed every square inch of valuable growing space to feed themselves.

Change is coming—likely far sooner than any of us expect. With the breadbasket of Europe still embroiled in war, and crop harvests the world over threatened by an increasingly chaotic climate, food prices will only go up. In just the past few years, the cost of my own weekly shop has doubled. Well, it would have, if it weren't for the fact that like many of you, we cut our food shop back drastically. Doesn't cost double if you only buy half as much, eh?

But why has food especially got so expensive? Why are the shelves more frequently empty?

You can blame the lingering effects of Covid, perhaps some Brexit supply chain disruption, and throw in a bit of good ol' corporate greed (we all know the line must continue to go up, after all)—but a big chunk of that rising cost comes from the worsening climate and the havoc it wreaks upon crop harvests.

We've just come out of the warmest and wettest winter on record for the UK. And we'll soon go straight into the hottest ever summer (and you can bet anything that we'll have another hose pipe ban). And this is happening almost every year now. Every single one of the past 11 months

was the hottest average on record for the earth.

Last month, the National Farmer's Union warned that it would be the first year without a harvest since World War II, because fields across the country are still flooded. I would say let's swap to growing rice, but then there would be a drought in summer and that would fail, too.

Sure—one bad harvest isn't exactly going to kill us, but you don't need much imagination to work out what happens if there's a bad harvest every year. A warming climate holds more water and more energy, making it less predictable and more extreme. That's a serious problem for agriculture, which relies on on stability and predictability, neither of which we now have.

We may not technically be at war with another nation (yet, and I do hope this is still true in the week that it takes between sending this off to print and distribution), but perhaps it's time for another "Dig for Victory" campaign. All you need is a patch of ground and a little leg work. Grow your way to resilience!

Now is the point in most articles about climate change that I'm supposed to say *"don't worry, if we can all just pull together and make some monumental changes to our lifestyles and power structures the world over, we might still have a chance to avert the worst of it!"*

I'm afraid that part isn't coming, though. Sorry. We've been perpetually told that there's ten, twenty more years to avert the climate crisis for the past forty years, and now, well... now there isn't. Climate change is not a problem; in the sense problems have solutions. This is a predicament—one that will fall upon us to endure.

"I wish it need not have happened in my time," said Frodo. "So do I," said Gandalf, "and so do all who live to see such times. But that is not for them to decide. All we have to decide is what to do with the time that is given us."

James Bruce, Parish Pump Editor

Chairman's Report

On Wednesday 22nd May at 7 pm, there will be an opportunity to meet the current Council and ask questions about the administration of the Parish and any future plans.

The majority of the current 13 councillors, with only a couple of changes, have been members of St Ive Parish Council for eight years by 2025 when the next Local Parish Elections will be held.

Personally, I have been involved as a councillor for the last ten years, and Chairman for just over three years, a post I had the privilege to hold.

I would encourage anyone who is interested in local government and is interested in joining the Parish Council to come along on the 22nd May, or thereafter and get more information.

Earlier in the year we finally had the opportunity to replace the two aging boilers which have been keeping Millennium House warm for over 25 years. The new boilers are smaller and more efficient which will reduce our heating costs.

Pot holes can be a danger and cause damage to suspension, tyres etc, and as a motorcyclist I've caught a hole at the last moment giving me a "wobble". There are two ways to report pot holes, one being the Cornwall Council website, or one I use is **www.fixmystreet.com**. Holes are usually filled in a couple of days.

Stay safe!

Alan Moss – Chairman of the Parish Council



Pensilva WI

The speaker for the April meeting was David Parker who told us about the National Coast Watch Institution. This is a voluntary organisation providing a visual watch along the UK's coast. There are over 60 national coast watch stations operated by over 2,600 volunteers in the British Isles. David gave us a wonderful insight into the valuable work they do, by not only monitoring radio channels for shipping, but also for walkers who might need help walking the coastal paths. He was warmly thanked by Verna Dawe for his informative talk and also for the very valuable work so many volunteers undertake.

Dates for our Diary's:

- The Resolution Road Show at Millennium House. Wednesday 24th April.
- Coffee with the Chair 11th May. Shire House Suite, Bodmin.
- Litter pick around the Village, Saturday 11th May.
- Pensilva W.I Birthday Dinner at The Wheal Tor, Saturday 18th May.

Birthday posies and cards were presented to four birthday girls this month: Trish Thomas, Sue Turpin, Sue Hill, Hilary Clatworthy.

Competition winners for a Photo of the Coast: 1st Verna Dawe. 2nd Mary Yates. 3rd Jean Hoare. **Flower of the Month:** 1st Alison Willis. 2nd Jo Hodgkinson. 3rd Jean Hoare.

The next meeting of Pensilva W.I will be **Wednesday 8th May at 7.15pm** at the Millennium House. The speaker for the evening will be Daniela Barnard who will tell us about the work of Emily Hobhouse. Competitions, if you wish to enter: a Victorian Artefact, and the flower of the month.

Please come along as a visitor or you might decide to become a member. We are a friendly bunch of ladies and you will be made very welcome.

Millennium House

Hi Parish Pump Readers,

What a delightful April! Yes there was rain but how beautiful was the sun when it was shining? It was wonderful to see, let's hope May is full of more sunny days!

This month at Millennium House we have ...

Wednesday 1st May - the beautiful singing with Natalie from Sing & Sign! Book your age appropriate group from 0 to 30 months old with nataliecole@singandsign.co.uk This is every Wednesday during school term time. Get your little 2 & 3 year olds active with Coach James from Kixx every Wednesday 9.40am to 10.20am!

Thursday 2nd May - Stay and Play group from 10am, Walking Netball from 4pm, Country Dancing (fortnightly group) from 7pm or Aikido from 7.30pm. All these groups are weekly and welcome everyone. You can also join the Cake, cuppa and company morning in the coffee shop from 10.30am to 12.30pm every Thursday. Note, it is also **Polling Day in the Function room!**

Friday 3rd May - get creative with Penmill art group from 10am weekly or have a great time with Hayley at Slimming World from 5.30pm every week!

Saturday 4th May - join Hayley at Slimming World either at 8am or 9.30am!

Sunday 5th May - our monthly Pensilva Market Day is on! There are stalls with sweets, crafts, bric a brac, baked goods and more. Please come along and support the local sellers. Free parking, free entry into the market and refreshments available to purchase on the day.

Monday 6th May - enjoy a little gentle exercise with Mims every Monday from 10.30am, or leave everything at the door and get on the mat with Yoga with Laura Louise Yoga from 5.30pm weekly. Get swinging into Badminton from 7.30pm weekly and Tuesdays weekly too!

Wednesday 8th May - join the Pensilva W.I. ladies for an evening from 7pm.

Thursday 9th May - join Millennium House events meeting at 7pm and help plan and organise events for the community!

Saturday 11th May - Lego Club for all the big and little Lego fanatics from 9.30am, or come and join us for an afternoon of fun at Tess's Tea Party from 2pm for tea, a lovely

lunch, raffle and a little game of bingo! If you are looking for an evening out, come along to watch Mind Your Manners Band!

Sunday 12th May - the bar will be open until late, come along and support the pool team!

Wednesday 15th May - come along Bingo dabbers to our monthly bingo every 3rd Wednesday of the month! Doors open 7pm, eyes down 7.30pm!

Friday 17th May - enjoy this months film with Mothering Sunday. Doors open 7pm and the film starts at 7.30pm.

Sunday 26th May - Antiques Fair from 9am until 3pm. The Pool Cup final will be held at Millennium house, come along and watch the final and enjoy a drink too!

Wednesday 29th May - come along and enjoy another delectable dinner from Abi & Natalie from M2 Catering! Please book your tickets in advance to ensure you get your seat at the table and so the ladies know numbers!

Carnival preparation is in full swing! Keep your eyes peeled for more info on our Facebook page, noticeboards and next month's pump! Don't forget, Carnival Day is *Saturday 20th July 2024!* We have a day of fun planned from 12 noon to 5pm and a disco dancing evening from 7.30pm! There will also be a scarecrow competition - you can find the entry form on the next page.

Have a mesmerising May!

Vanessa

THE SEARCH IS ON: PENSILVA CARNIVAL KING, QUEEN, AND ATTENDANTS NEEDED

Would you like to be crowned our carnival King or Queen for 2024? Or perhaps be a royal attendant? Please let Vanessa know at Millennium House, or email:
ness.mhouse@gmail.com



PENSILVA CARNIVAL SCARECROW COMPETITION ENTRY FORM

**Scarecrow must be on display from Sunday 14th July to end of Carnival Day.
Please return entry form to Millennium House reception before carnival week.**

Winners will be determined by a public vote on the day of Carnival!

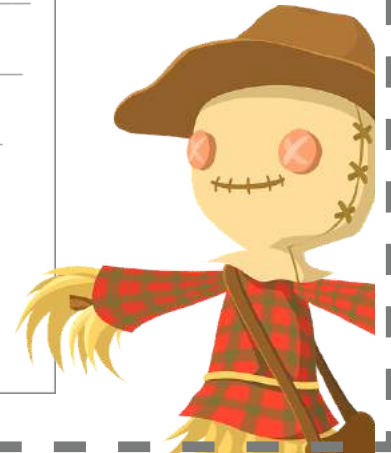
Name: _____

Address: _____

Postcode: _____ - _____

Telephone: _____

Email: _____



Film Club

What a great turn-out for last night's film: Greenfingers. Not only many of our regular members but also some visitors from neighbouring C-film clubs (Upton Cross and Callington). Don't forget that our members can attend any C-film club upon payment of that particular club's entrance price (usually £4).

I really enjoyed Greenfingers as, I think, did our audience. Helen Mirren always steals the show but a great cast - including a very young Danny Dyer. I also very much enjoy movies that are based on true facts, albeit with due "artistic licence".

Our next offering, on 17 May is "Mothering Sunday" - think Downton Abbey meets

Upstairs, Downstairs (for those who can remember that!) Set between the two world wars the film follows the life of Jane, a maid, who is having a forbidden love affair with a wealthy neighbour. The film jumps to various stages in her life revealing incidents that helped shape her future as an award-winning writer. Hope to see you there - doors open at 7pm for a 7.30 start. The Mel Bar will be open before and after the showing.

C-film membership is £6 for a year, which includes the first film, after which there is a charge of £3 per film. Any inquiries to - **judy.two@outlook.com** or 01579 208836 Pensilva Film Club, in Association with C-film, part of Creative Kernow

Pensilva Community Association and C-Fylm Present

PENSILVA FILM CLUB



FRIDAY, MAY 17th

DOORS OPEN 7PM, FILM STARTS 7:30PM

MOTHERING SUNDAY

£3 for C-Fylm members

Non-members can join on the door for £6, which includes your first film.



The story takes place on Mother's Day in 1924. Fir Mr. and Mrs. Evan give their housekeeper, Jane Fairchild (Odessa Young), the day off, as the couple are set to go to their neighbour's house to celebrate his engagement. The truth is Jane and the neighbour, Paul, have been having an affair for many years.

Rated R. Romance/Drama -
1h50m. SCAN FOR TRAILER ----->



PENSILVA



Free
Entry

Featuring local sellers,
craft stalls, indoor carboot,
baked treats, and live plants.
Refreshments available and bar!

£5 per
table



←← MILLENNIUM HOUSE PRESENTS →→

PENSILVA MARKET DAY

**FIRST SUNDAY OF THE MONTH;
NEXT MARKET DAY IS...**

May 5th

SELLERS FROM 10am; BUYERS 11am-2pm

**Call Vanessa on 01579 363096 or email
ness.mhouse@gmail.com
to book your table or other enquiries**

**Fancy something spicy for lunch instead of the
usual pasty? Hui will be selling Kimchee Noodles
(and jars of homemade Kimchee and chilli oil if
you want more!)**

PRINCESS ROAD, PL14 5NF





Managing Your Grassland for Biodiversity & Climate Resilience

with

ST IVE COMMUNITY GARDEN &
WESTCOUNTRY RIVERS TRUST
at St Ive Church, St Ive, Liskeard

SATURDAY 11 MAY
2PM- 4PM

BOOK YOUR FREE PLACE TODAY VIA
WRT.ORG.UK/EVENTS

or use your smartphone to scan the code

**FARM
NET
ZERO**



SCAN ME

Pensilva School PSA
Presents

Family Bingo

Family Bingo - £5 per book
Cash flyer (over 18's only) -
£1 per game

Saturday 8th June - Arrive
6pm - Eyes Down 6:30pm

Millennium House, Pensilva

Raffle - Tea and Coffee - Cake

Community News and Comments

Would like to say thank you to staff and friends who helped our wedding blessing go well in the function room at Millennium House. It was a joyful day and evening. Thank you who helped set up and clean up. And the band for lovely music.

Mr & Mrs Reilly

Pensilva and St Ive Annual Parish Meeting

Everyone is invited to come along and meet the parish councillors, ask questions about the parish, Millennium House, or finances.

**Wednesday 22nd May,
7pm at Millennium House**



St. Ive Village Hall

The Cross, St. Ive

PL14 3LZ

1st Monday of the month

7.30pm

New members welcome

St. Ive Village Hall PL14 3LZ

Snooker Club



Monday and Thursday Evenings

7pm

Contact Ray Bunkum

01579 382315



Millennium House Community Transport

Do You Require Transport to and from the Doctors or Hospital?

Our Parish has a number of volunteer drivers who have agreed to continue to help those who do not have transport, by using their own vehicles to help those in need.

Millennium House Community Transport's aim is to connect local communities and reduce social isolation.

If you would like to volunteer as a driver, or if you require transport to Hospital; Doctors or Vaccination and have mobility issues, unable to drive to your appointment.

Please contact Marlene on 01579 362919 or 07896994947 and we will endeavour to help.

PENSILVA WOMENS' INSTITUTE
HORTICULTURAL SHOW

To be held in

Millennium House, Pensilva

On

Saturday 14th September 2023

To be opened at 2.15pm

By

ST.IVE PARISH COUNCILLOR

ALAN MOSS & JULIE MOSS

Please return cups awarded in 2023
to either Trish Thomas or Alison Willis
by Monday 19th August 2023.

HANDICRAFTS

SECTION 5 - OPEN

CLASS

62. Knitted or crocheted item
63. Item of needlework
64. Painting (any medium)
65. Item of sugarcraft or porcelain
66. Any other handicraft, not included in the above classes.
67. Any hand-made bag, any medium.

PHOTOGRAPHY

SECTION 6 – OPEN

CLASS

- | | | |
|-----|---|-------|
| 68. | Any sporting photo | Print |
| 69. | An unusual sky | Print |
| 70. | A humorous photo, with caption | Print |
| 71. | 'Young & old' | Print |
| 72. | Own Choice | Print |
| 73. | A digitally enhanced photograph of one of the above classes | Print |

SECTION 7 – OPEN JUNIOR UNDER 15

CLASS

- | | | |
|-----|--------------------|-------|
| 74. | Any sporting photo | Print |
| 75. | A funny photo | Print |
| 76. | Own choice | Print |

PRINTS MAY BE COLOUR OR BLACK & WHITE, NO LARGER THAN 7" X 5"/18 X 13CMS, MOUNTED ON WHITE CARD 8" X 6"/20 X 15CMS.

PENSILVA COMMUNITY ASSOCIATION
AND GORFENNA COMMUNITY
INVITE YOU TO

CAKE, CUPPA, & COMPANY

EVERY
THURSDAY

10:30 AM
TO
12:30 PM



AT THE COFFEE SHOP,
MILLENNIUM HOUSE

• Come along and enjoy homemade
cake, a cup of tea/ coffee, and good
company.

• EVERYONE welcome. •

Singing for well-being

Fun singing session All welcome!
Very simple songs to relax, uplift and
connect. No experience needed.

10-11AM TUESDAYS

CRAFT ROOM, MILLENIUM HOUSE

PENSILVA

£5/session

**FOR FURTHER INFO, TEL:
CLARE 01579 382341**



Warning: Lookout for Asian Hornets!

A destructive, and potentially dangerous, invasive insect has made its way to the UK

First discovered in the UK in 2016, the insect has travelled to our shores from western Europe, where there are now over half a million nests annually in France alone.

By 2022, just 16 Asian Hornet nests had been discovered in this country. But in 2023, this increased dramatically to 72 nests in 56 different locations – more than in the previous six years combined.

They have the capacity to wreak havoc on our wildlife in the UK, through their destruction of pollinators. Just one nest of hornets can consume up to around 11kg of insects in a year.

For more information, including the latest updates and ways in which you can help share awareness, take a look at the British Beekeeper's Association website at

bbka.org.uk

Identifying the yellow legged Asian Hornet

- Does it look very black?
- Has it got a wide orange stripe on 4th segment of abdomen?
- Do its legs look as if they have been dipped in yellow paint?

It is important for everyone to be actively looking for it. If you spot an Asian Hornet, please report it by using the Asian Hornet Watch app available free on both Android and iPhone. If you suspect you have seen an Asian hornet you can also report it using the alert email address with a location (and photo if possible):

alertnonnative@ceh.ac.uk





Version 5.0. Produced by Lucy Cornwell, Olaf Booy (NNSS), Gay Marris, Mike Brown (National Bee Unit) with assistance from Colette O'Flynn (National Biodiversity Data Centre Ireland) Stuart Roberts (BWARS)

Asian Hornet

Alert!

Report sightings of this species:

- with the iPhone and Android recording app: **Asian Hornet Watch**
- online at: www.nonnativespecies.org/alerts/asianhornet
- by email: alertnonnative@ceh.ac.uk

Species Description

Scientific name: *Vespa velutina*

AKA: Yellow-legged Hornet

Native to: Asia

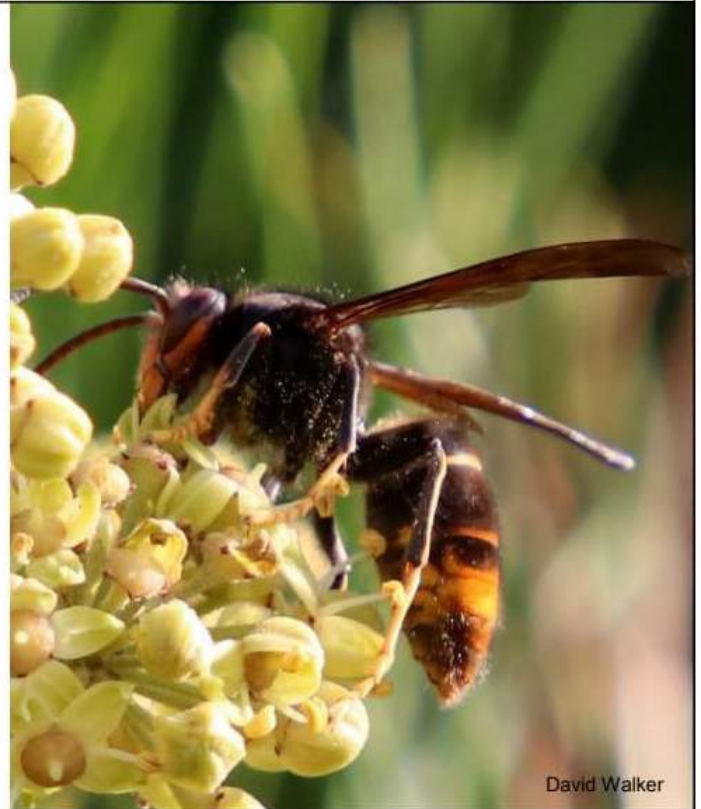
Habitat: Nests usually high in trees and man made structures, sometimes closer to the ground; hunts honey bees, other insects and also feeds on fruit and flowers.

Not easily confused with any other species. Dark brown or black velvety body. Characteristically dark abdomen and yellow tipped legs. Smaller than the native European Hornet.

Introduced to France in 2004 where it has spread rapidly. A number of sightings have been recorded in the UK since 2016. High possibility of introduction through, for example, soil associated with imported plants, cut flowers, fruit, garden items (furniture, plant pots), freight containers, in vehicles, or in/on untreated timber. The possibility that it could fly across the Channel has not been ruled out.

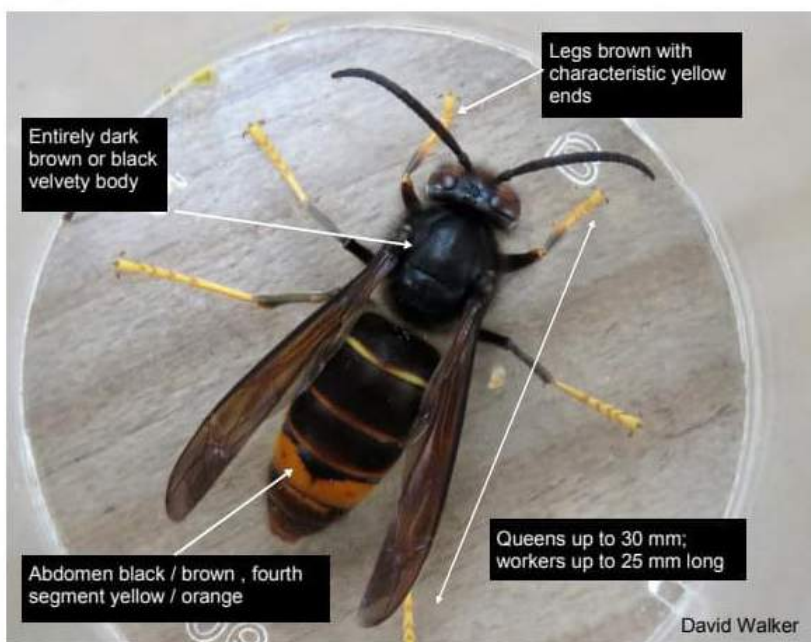
A highly aggressive predator of native insects. Poses a significant threat to honey bees and other pollinators.

Do not disturb an active nest. Members of the public who suspect they have found an Asian Hornet should report it with a photo using the details provided in the red box at the top of this ID sheet.



David Walker

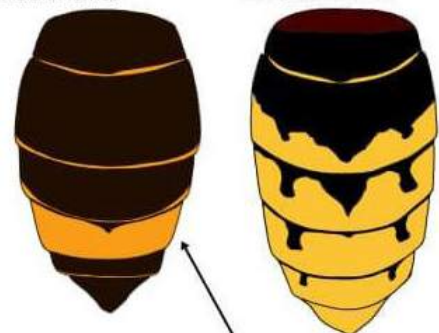
Key ID Features



David Walker

Asian Hornet

European Hornet



Asian Hornet abdomen is almost entirely dark except for 4th abdominal segment.



J. Haxaire

Nightingales Ukraine Appeal

A big thank you to all who contributed to the Aid for Ukraine. The aid was collected from the Millennium House on April the 5th by Tracey Halton and her female colleague and taken by Nightingales UK to Tavistock.

The response was truly humbling and the van well stocked. It just shows that when we all come together for a common cause, our combined effort can make a huge difference to the lives of others.

I am happy to announce that both ladies successfully achieved an aid drop to their partners in Prague, who have continued to take the aid onto Ukraine.

Sadly, it appears that with all the other conflicts occurring throughout the world, Ukraine has dropped off the news headlines but continued aid is vital and needed now more than ever. Ironically, Ukraine is one of the leading manufacturers of medicines and the impact of the war is creating a shortage of some drugs throughout Europe.

Although these are worrying and troubled times, we can ALL make a difference by doing something. Even if it is buying a 25p toothbrush for a stranger. Sometimes it feels as though our world problems are so big that we can't make a difference. Trust me, the 4,000 vulnerable, disabled and elderly families that are stuck in a no-mans-land situation in Ukraine, who are hungry and fearful, will be mightily glad of the aid that we have sent. The last update I received from Nightingales was that 7 ambulances had been blown up in a week. Nightingales not only take aid out to Ukraine but also drive donated 4 x 4 vehicles, that they take over on a one way journey, to be left in Ukraine and used for medical evacuation/ambulances and other humanitarian purposes. To date they have delivered 4 vehicles with high end, lifesaving medical aid into Ukraine, saving many lives.

I will leave you with this thought. Although our country is by no means perfect, I am thankful for my freedom and my caring community. I am thankful for Pensilva and Oaktree medical centres for their tireless continued hard work, serving our community. I am grateful for the medication I can collect from these organisations even if I have to wait. I am thankful for the Millennium House staff who work hard and give their time to support our village. I am grateful for the food in my cupboards and the nature that surrounds me. Take comfort in the little things, for we are far richer than we think and let kindness be our new currency. God Bless.

If anyone would like to make a cash donation to Nightingales UK, please go to <https://gofund.me/d206a476> where you will find a go fund me page - Nightingales UK - Aid for Ukraine. One trip to the borders costs approximately £1,000 for insurance, ferries and fuel. If anyone would like to donate a Long Wheel Base 4 x 4 with a few months MOT left but able to be driven a few thousand miles, please contact <https://www.facebook.com/profile.php?id=100094108534387> or contact me Janey Bryson on 078 0866 3749. Thank you.



MEDICAL ITEMS NEEDED THAT YOU MAY HAVE OR CAN BUY OVER THE COUNTER

DRESSINGS, ETC

(SEALED PACKS ONLY PLEASE)

CELOX (stops bleeding)
Tourniquets
Trauma Bandages
Gauze
Plasters
Procedure Packs
Dressings for Burns
Steri Strips
Eye Dressings
Sutures

EQUIPMENT

First Aid Kits
Blood Sugar Testing Kits
Pulse Oxygen Readers
Peak Flow Meters
Gloves
Scissors
Syringes
Feeding Tubes
Spacer Devices
Forceps
Scalpels
Crutches
Collars
Splints
Walking Frames
Wheel Chairs
Torches
Power Banks
Metal Detectors
Mini Portable Gas Stoves
Waterproof Boots
Clean Winter jackets

Medication

Antihistamines (Eg, Piriton)
Burns Gel
Eye Wash
Paracetamol
Ibuprofen
Imodium
Dioralyte
Decongestant Sprays (Eg, Vicks)
Strepsils
Toothpaste
Tooth Brushes
Tooth Repair Kits
Disinfectants
Nutritional Drinks (Eg Complan)

PLEASE NOTE:

NOTHING CONTAINING CODEINE, THANK YOU

IF YOU ARE ABLE TO DONATE ANY OF THE ABOVE ITEMS, PLEASE BRING THEM TO THE MILLENNIUM HOUSE IN PENSILVA OR CONTACT JANEY BRYSON ON MOBILE: 07808663749 FOR COLLECTION - THANK YOU

HUMANITARIAN AID NOW COLLECTING

- Children's Nappies
- Feeding Bottles
- Dummies/Pacifiers
- Baby Foods
- Disposable Nappies
- Wet Wipes
- Toilet Paper
- Childrens and Adults Shampoos, Soaps, Toothpastes, Toothbrushes
- Adult incontinence pads
- Washing Powders
- Tinned Foods
- Pet Foods
- Infant Formula
- Sanitary Pads
- Washing Up Liquids
- Cereal
- Pasta
- Animal Feed
- Sugar, Tea, Coffee





BRING YOUR CREATIONS TO MILLENNIUM HOUSE ON THE DAY BEFORE (OR BEFORE 12PM) OF CARNIVAL DAY. IT COULD BE A DRAWING, OR A PHYSICAL ART PIECE YOU'VE BUILT.

CATEGORIES: 4 AND UNDER, 5-7, 8-11, AND OVER 11

PENSILVA CARNIVAL BAKE OFF!

ADULT CATEGORIES

- Victoria sponge
- Showstopper

CHILDREN

- Three cupcakes

To be judged on carnival day on 20th July. Please bring your creations to Millennium House before noon, and fill in an entry form there.

Unity Methodist Church

Sunday 5th May 11.15am - United Service at St Ive Parish Church.

Sunday 12th May 10.30am - United Service at St Ive Village Hall led by Rev Jonathan Budd with communion.

Sunday 19 May 11.15am - United Service at St Ive Parish Church.
6pm United Greenshoots Service hosted by Bluntsand led by Noel Morgan.

Sunday 26th May 10.30am - United Service at St Ive Village Hall led by Bernard Melling.

The Chattermakers craft group will meet in the Village Hall on Thursday 2nd, Thursday 16th and Thursday 30th May at 7.30pm.. For more details please contact Kathryn on 01579 382334.

All welcome.



Unity
Methodist
Church

Quethiock Village Horticultural Show

Date: Saturday July 20th

to be held in Quethiock Village Hall

Dying Matters Event

Sunday 12th May.

1:30 - 4:30pm



Dying
Matters



Pentiddy Natural Burial Site
Pensilva, Near Liskeard

Free event - Everyone welcome!

It gives us great pleasure to invite you to an open day as part of Hospice UK's Dying Matters Awareness Week. The afternoon will be an opportunity for us to explore together our choices around death and dying with the hope of bringing death back into the heart of our communities and empowering us to make the most of our (finite) lives. Talking about death also won't bring it closer, and lots of families find it's a relief to have the conversation and get everything into the open. It can help you and your loved ones cope better with the emotional and practical impact of death.

- 1:30pm **A tour of Pentiddy Natural Burial Site** with Ele and Anthony Waters
- 2:30pm **Information and chat.** In the glade by the roundhouse there will be a wide variety of related information, professionals to talk to and examples of locally crafted sustainable coffins, shrouds and floristry. There will also be a space set aside for quiet reflection.
- 3pm - 4:30pm **Death Cafe.** In the roundhouse, hosted by Confortia*. An informal and safe space (with tea and cake!) to chat about our own experiences and feelings around death and dying and to ask questions that are hard to ask. It will be led by volunteers who themselves have been actively involved in different ways with death or the dying process.... in both a personal and a professional way.



Pentiddy Natural Burials: www.pentiddynaturalburials.co.uk 01579 362430

Dogs on leads welcome. For directions visit www.pentiddy.co.uk/find-us/
To find out more you can email Ele at burials@pentiddy.co.uk



© Hospice UK 2023. Company limited by guarantee.
Registered in England and Wales No. 2751549.
Charity registered in England and Wales No. 1014851, and
in Scotland No. SC041112. VAT No 731 304476



*Confortia is a developing group that aims to comfort, support and inform all who wish to talk about and be better informed about death and dying.

NEIGHBOURHOOD DEVELOPMENT PLAN FOR ST IVE & PENSILVA



Thank you so much to all the people who came along to Millennium House and St Ive Parish Hall to find out more about the Neighbourhood Development Plan on the 26th & 27th April.

And a big thank you to Francis Shepherd & Hannah Curnow, from The Cornwall & Isles of Scilly Historic Environment Record.

For those of you who couldn't attend the drop in event, please visit www.plan4stive.co.uk You can find out more on this dedicated website, and also there is a link to the new survey that we would love everybody to complete.

The Plan will provide a local framework for planning policy in the Parish until at least 2030.

If you don't have internet access then paper copies of the survey are available from the parish council office in Millennium House.

YOUR PARISH

YOUR PLAN

YOUR SAY!

This QR code will take you directly to the online survey. Please use it as the more you say the better this Plan for the future development of your parish will be. – Open in Browser for best performance.



Patricia Steer for St Ive and Pensilva Parish NDP Working Group

St. Ive Village Hall, The Cross PL14 3LZ

HALL HIRE

£5 an hour

Includes use of the kitchen and electric (except wall heaters, which are on a £1 coin meter)
For bookings ring Amanda 07703393070

Regular Group and Activity Timetable

Gardening Club	1 st Monday monthly 7.30pm	01579 382762
St. Ive Snooker Club	Mondays and Thursdays 7pm	01579 382315 R. Bunkum
Mobile Post Office	Wednesday 10.30am – 11.30am	
Coffee Morning	Wednesday 10.30am – 12	

Methodist Sunday Service	Check timetable in Parish Pump for services	Kathryn or Keith Mutton 01579 382334
--------------------------	---	--

Chattermakers Chat and Craft	Thursdays Fortnightly	Kathryn 01579 382334
---------------------------------	--------------------------	-------------------------

St John's Mission Church Pensilva Good Grief Cafe



Wednesday 15th May
3.00 pm

We can grieve for many reasons:
the death of a friend or relative;
the diagnosis of a friend or relative
with dementia or a terminal illness;
loss of mobility or driving licence;
closure of your place of worship;
closure of a support group;
the loss or illness of a pet;
the loss of freedom;
the loss of a job;
homelessness;
the loss of stability in society.

The Good Grief Cafe is for anyone
who is grieving for any reason.
Come for company, for friendship.

Eat cake, drink tea and coffee.

Chat if you want to,
or just be there.

Everyone is welcome.

For further information
contact Geoff 01579 362698

Pensilva



MemoryCafé

Thursday 23rd May
2.00 to 4.00 pm

If you have
memory problems
or
you are a carer
for somebody
who does
and
would like to
meet others
who understand
your situation
then join us at
St John's Church

Contact Geoff 01579 362698

BAKED POTATO & PUDDING Lunch



St John's Mission Church
Pensilva



Thursday 2nd May
12.00 to 1.30 pm

BRING & BUY
STALL

Donations in aid of church work in our community



Tuesday 7th May
Leaving from
Penharget Cottage
Pensilva PL14 5RJ
at 6.30 pm



Pasty Supper
Bring & Buy
Raffle



St John's Mission Church

Services for May 2024

Sunday	5 th	11.00 am	Morning Worship
Sunday	12 th	11.00 am	Morning Worship
Sunday	19 th	11.00 am	Holy Communion
		3.45 pm	Tea Time Church for children & their families
Sunday	26 th	11.00 am	Morning Worship
Thursdays		10.00 am	Morning Prayer Fellowship

MAY EVENTS Please see posters for full details

Thursday	2 nd	12.00 - 1.30 pm	Baked Potato & Pudding Lunch
Tuesday	7 th	6.30 pm	Bluebell Walk & Pasty Supper for <i>Myeloma UK</i>
Wednesday	15 th	3.00 pm	Good Grief Café
Thursday	23 rd	2.00 - 4.00 pm	Memory Café
Tuesday	28 th	2.00 - 4.00 pm	Stitch, Knit & Natter

For further details, to arrange transport or if you know of any illness or need in the village, please call Geoff, 362698 or Frances, 363718

MILLENNIUM HOUSE COMMUNITY COFFEE SHOP

**Open Tuesdays, Wednesdays, and Fridays
9am to 1pm (to coincide with the Post Office)**

We, the volunteers, opened the Coffee Shop in 2017 with the hope of giving something back to the community. The atmosphere is relaxed, making it an ideal place to enjoy meeting up with friends for a cuppa and a chat. A warm welcome is assured. We would like to say a huge "Thank You" for your continued support.

**Tuesday
28th
May**

**St John's
Mission Church
Pensilva**

**on the
last Tuesday
of the month**

**2.00
to
4.00 pm**

**Contact Kathleen
01579 363686**



Teatime Church



For children and their families

Playing Games

Singing and Praying Together

Sharing a Bible Story



Sunday 19th May

3.45 pm

**St John's Mission Church
Pensilva**

Eating Tea

For more information
contact: Rev Becca Bell
revbeccabell@gmail.com



Gardening Club Report

After a postponed visit due to stormy weather our first outdoor visit of the calendar year was to Trevina House near St Neot on Monday 15th April. Although we missed the storm by a week the wind was swirling around us when we arrived.

Sue and Kevin greeted us with warm, friendly smiles saying that we would be glad we didn't visit the week before -the weather was awful with both the garden and woodland saturated in water.

Sue began by telling us that the place is south facing and was a farm settlement and part of Lanhydrock Estate. Research by their son, Edmund, has shown that it goes back to around 1230!

As we walked towards the house and the front garden the trees creaked as the wind followed us around. We stopped by the lawn area, known as the "shade garden" although the evening sun provided a beautiful backdrop beaming onto the side of the house. When Sue and Kevin viewed the property they fell in love with the earth, rock and rubble – their imagination could see the area would one day become a flat lawn of emerald grass surrounded by tall trees providing shade on a sunny day. So much so that Kevin, with his talent for drawing, had drawn a map to show the plans.

Moving around to the front of the house the family dogs gave us an equally warm welcome through the window of the house as Sue and Kevin had upon our arrival!

The front of the house has a semi circle creation underfoot of stone and very much-loved alpine plants. Again, the area was a slope of rubble and sand but more was visualised at the viewing – so much so that Sue and Kevin bought the property without ever going inside the house! Turning around from the 33 year old alpine bed by our walking shoes and wellies were the early signs of the little crocus.

Sue explained that they are planted in a semi-circle, the idea was for them to be a rainbow but as some of you will know crocuses have a habit of not wanting to be the colour you expect and equally only coming out in bloom when they want to so the rainbow doesn't always fully appear but then again, it is unusual to ever see a full one so maybe it reflects the real thing after all.

In a more water friendly part of the garden there is an iris bed, due to the battering weather of the previous week and the high winds sadly, most of the iris which had been out were looking rather sad expect one little one who had the idea of only growing a few centimetres – he was still going strong! Sue explained that the area was covered in bamboo – they decided to clear it which was a great idea until it wasn't! One piece took all day to move!

Sue and Kevin are currently working on a "gold and silver" area, with the gardening fork standing proud in the ground it was clear to see they had been very hard at work.

As we made our way down a cobbled path with many "watch your step" to each other we passed what I can only think is the oldest plant I have ever seen – a pink rose which they have been told is from 12th – 14th Century! I can only imagine what it has seen in its time!

We crossed the road, or rather very narrow lane, into the woodland. Sue described how the woodland had had many life times; sand pits, towers, tree house, trampolines – many a happy hour with children and grandchildren. For anyone who loves the outdoors pretending to be peter pan or a pirate or a woodland fairy this would be the place to be.

Some trees had been recently felled to make way for sunlight to the magnolia who was losing a battle for sunlight. A few steps and we entered an orchard of 110 trees – mostly fruit trees. Yes, Sue and Kevin have apples all year around for apple juice, cider, apple sauce, dry apples and to eat. Many different varieties, even mixed varieties to make new ones.

Back around we had a glimpse of the kitchen garden as we entered what was originally a Victorian vine house, but had collapsed beyond

repair so there is only one original wall remaining. Once inside, it is sheltered, even cosy. Sue and Kevin use it for cuttings, potting up, planting on and the home of the 33 year old grape vine. A place where someone could spend hours, days in the gardening world without being disturbed.

We then entered the kitchen garden. Sue explained that the cut grass is placed on the potato tops to protect them from the elements. Some of the grass is place on beds to breakdown into the soil – or rather it is made into a comfy home for mice, snakes or frogs!

Well, what a fabulous place – no the tour continues down a path known as "hydrangea walk"; many different colours of hydrangea boarder the path which winds beside the woodland and comes out onto another lawn. Kevin explained the deer in the area love their woodland and orchard but they can be destructive.

We saw where we had returned to where we had parked – must be the end now. But there was one more section to see: a rather large pond home to trout, frogs, toads, ducks with ducklings, and a popular spot for otters and herons. We were lucky, the sun as just setting as we looked across



the water, ripples of the trout breaking the tranquil, flat, reflective surface. At the back of the pond a backdrop of old Christmas trees highlighting the family life at the heart of Trevina House. A small, private piece of decking with a Jack and Jill couple seat looking out over the pond.

A short walk back up the lawn we entered a secret wooded area with vibrant yellow daffodils proudly standing in organised lines. When asked if they were a special kind Sue simply said "no, they are late daffodils who always seem very at home here but everyone comments on their bright colour". Wild strawberries were growing in the natural beds boarded by old branches. A rhododendron towered big and strong, Sue proudly told us it had been grown from seed year 25 years ago.

This enclosed area home to a nightingale and a fire crest bird – what a treat it would have been to see or even hear them!

This time it was time to go back to the house for homemade refreshments and what a delight they

were too.

This place has been given a heart by Sue & Kevin, it's been created out of love of the outdoors, family, creativity and most of all imagination.

Trevina House is part of the National Garden Scheme. We highly recommend a visit:

findagarden.ngs.org.uk

Next visit: Monday 13th May 2024

Exclusive visit to Antony Woodland Garden - an introduction talk & walk around the gardens

antonywoodlandgarden.com

Meet St Ive Playing Field car park at 6:30pm

- Members of gardening club: £8.50
- Non gardening club members: £13.50 (if you join gardening club you will get your £5 membership back!)

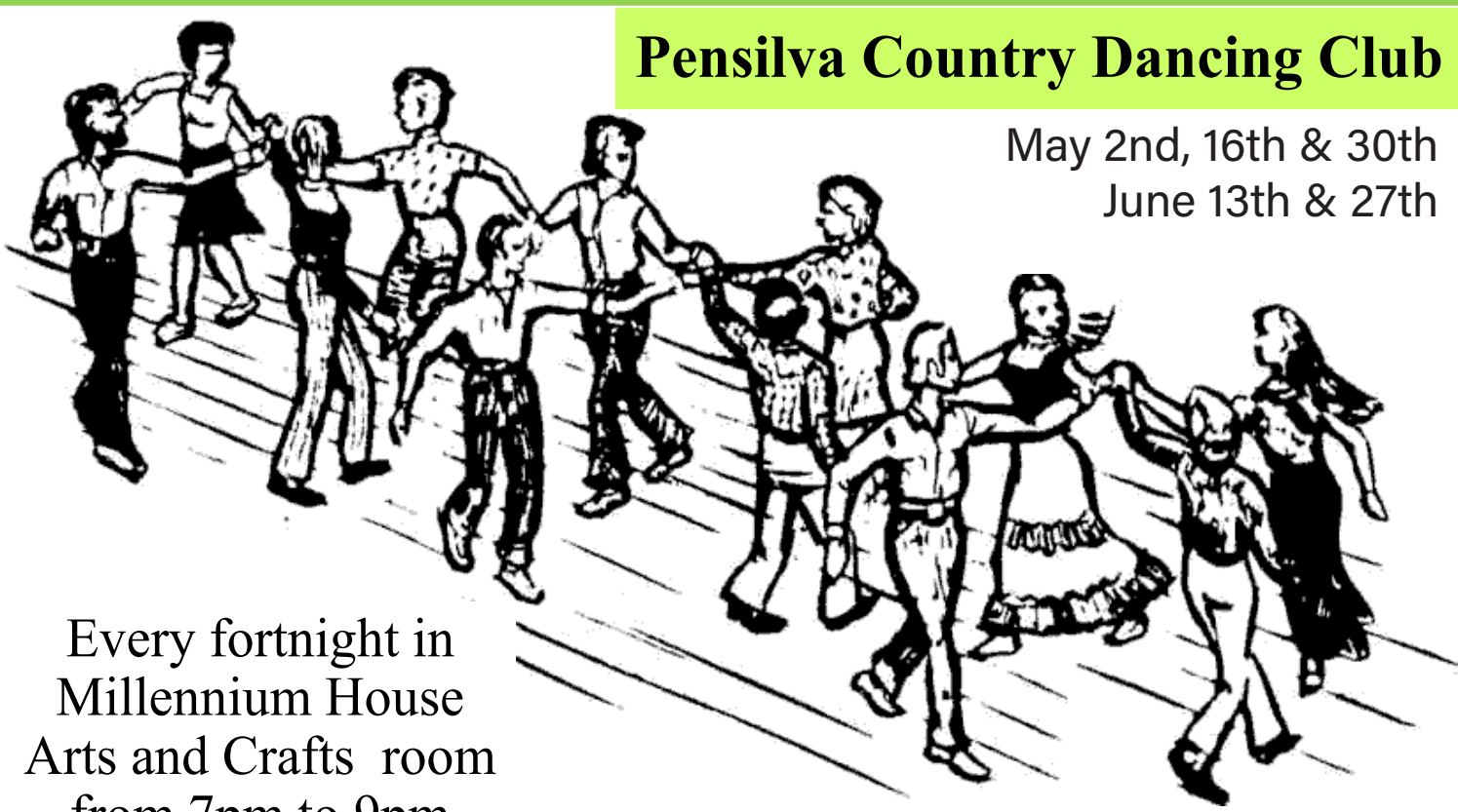


St Ive Church

May 5 th	Morning Service	11:15am in Church
May 12 th	Chapel Service	10:30am In Village Hall
May 19 th	Holy Communion	11:15am In Church
May 26 th	Chapel Service	10:30am In Village Hall

EVENTS

May 18th **Concert by Valley Voices** **7pm**
Tea, coffee, and homemade cakes



Pensilva Country Dancing Club

May 2nd, 16th & 30th
June 13th & 27th

Every fortnight in
Millennium House
Arts and Crafts room
from 7pm to 9pm

For information ring Frances 01579 363718

Total Triage



Accurx Patient Triage is an online form to contact the practice about your health. Our surgery will be moving to a Total Triage system from Thursday 5th October. The model is as follows:

All patients submit an AccuRX patient triage from their smart phone or computer, the link for which is on our website. If you do not have a smart phone or are unable to do the online form you can call the practice and the reception team will complete the form on your behalf.



All clinical patient triages are reviewed by a GP. All triages will be looked at the same day and responded to within 72 hours, unless deemed urgent.



Upon review the team will contact you with an appointment or will signpost you to the correct service



**Ever tried...
Ladies Walking Netball?**

Come along to Millennium House, Pensilva



**Thursdays
4.00pm - 5.00pm**

£2 per session

**For further info contact rosemaryfarley@gmail.com
or Tel. No. 01579 384810**

All Being Well

We are still open for three mornings a week. A maximum of six members can now attend at one time.

Opening hours:

Monday, Wednesday and Saturday, 9am to 1pm.

Maximum six members at a time for each of three slots within each session: 9:00 to 10:20, 10:20 to 11:40 and 11:40 to 13:00

Prior booking is essential

To book yourself in or for any enquiries, call in at the gym or telephone on **01579 363890**, during the opening hours listed above.

23 years working in our local community to improve health, fitness and well being.

THE MEL BAR OPENING HOURS

Monday: Closed

Tuesday-Saturday: Open 5 - 10:30pm

Sunday: 12 - 5pm

Under 18s are welcome in the bar with an accompanying adult until 9pm.

Pool table available most nights.

Dogs also welcome.

RVS WEDNESDAY CLUB, PENSILVA

ROYAL
VOLUNTARY
SERVICE

Meeting in the village hall every 3rd Wednesday of the month.

Entry £2 which includes raffle and refreshments, 2pm to 4pm.

Wednesday 15th May: Alison Willis, visit to Russia

Wednesday 19th June: Cats Protection - learn how to understand their behaviour and welfare needs

Everyone Welcome. For further information please contact:

Cherry Woodhouse (Chairperson) 01579 363674

Jane Hall (Secretary) 01579 363379

MELODI LISKERRET

- A mixed group, singing a variety of well known numbers including Folk & Cornish songs.
- Local to you!
- Weekly rehearsals in St. Ive – Gorfenna, PL14 3LX
- Friendly informal rehearsals with a tea break and biscuits!!
- **Free one-to-one professional singing tuition within a few weeks of joining!!**

For more information, please contact Gerald, secretary, on 01579 363881 or email: charaton@btinternet.com

PENSILVA VILLAGE HALL

We are now open and back in business!

Anyone wishing to book the hall for meetings, birthday parties or fundraisers, please contact Peter or Jackie Browning on **01579 363212** or email **peterpensilva@gmail.com**



Please note that as well as hall rent there is a coin meter for heating at 60p/hr.



Struggling with Sight Loss?

iSight Cornwall offers practical help to people living with sight loss in Cornwall including:

Low Vision: Advice for low vision aids

Assistive Technology: Advice on products

Benefits Advice: Assistance to claim entitlements

Equipment Demonstration: Advice on gadgets

Social Clubs & Activities: Links to clubs & activities in the county

For more details Telephone 01872 261110 or visit

www.isightcornwall.org.uk

MOBILE LIBRARY SERVICE

**Next visit to Pensilva is
FRIDAY 3rd MAY 10:25-10:45
outside Victoria Inn**

The county library services visits every four weeks on Friday. You can browse the shelves, or pre-order books using the link (scan the QR code on the right):



<https://www.cornwall.gov.uk/libraries-museums-and-archives/libraries/mobile-library/>



Group Travel

Day Trips & Coach Holidays

Enterprise Park, Midway Road, Bodmin, Cornwall PL31 2FQ Tel: 01208 77989

Coach Excursions & Tours 2024

21st May	South Devon Railway & Rare Breeds Farm
25th June	Bicton Park Botanical Gardens
10th July	Jurassic Coast World Heritage Site Cruise
30th July	Meaders Lavender Farm & Cream Tea
17th - 21st July	Visit Eastbourne
13th Aug	Pecorama & picturesque Beer Village
6th - 8th Sept	Burghley Horse Trials
10th Sept	Widcombe Fair
16th - 20th Sept	Carmarthen & South Wales
9th October	Goosey Fair, Tavistock
2nd November	Bridgwater Carnival

Visit our website for all our excursions & tours.

Call: Dawn or Robin on 01208 77989 for bookings and brochure

website: www.grouptourtravelcoachhire.co.uk

email: grouptourtravelcornwall@btconnect.com

Bodmin MOT Centre

01208 77989

Garage Services
 MOT Testing Station
 Classes 4, 5 & 7
 Servicing & Repairs
 High Vehicles & Motorhomes
 Brake Test & Headlight Alignment
 Pre MOT Inspections
 Annual & Interim Vehicle Servicing
 ~
 Commercial interim inspections available
 including brakes and lights
 ~
 Helping you stay compliant

Bodmin MOT Centre
 Enterprise Park, Midway Road,
 Bodmin, Cornwall PL31 2FQ

Trystan Phillips

Carpentry/Joinery & Property Maintenance



37 years' experience

All aspects of Carpentry undertaken including:

Bespoke Carpentry & Joinery
 Kitchen Installations

Doors, Partitions, Skirtings, Architraves, Shelving
 Timber Floors renewed/repaired, Laminate Floors fitted
 Timber Windows repaired including 'Sliding Sash'

Plus General Property Maintenance:

Including Painting/Tiling and much more!

Fully insured
(Including Public & Product Liability)

07397 153792 trystanphillips carpentry@gmail.com 01579 363150



GENERAL GARDEN & HOUSE MAINTENANCE

NO JOB TOO SMALL

Call to discuss your requirements.
NO OBLIGATION quotes given.

One off jobs or regular work catered for.

Here are some examples...

OUTSIDE



**MOWING
HEDGE CUTTING
FENCE PAINTING
BOARDER WEEDING
PATIOS & DRIVES
CLEANED**

INSIDE




**WINDOWS CLEANED
INSIDE & OUT.
PAINTING
CLEANING
SHOPPING
IRONING**

CALL ANDREW CARLIN

now on:

07407 323888

Thank you.



Colin Swinburne Electrical Services



All aspects of domestic and commercial electrical work.

Inspection and testing (EICRs), fault finding, new installations, rewires, consumer unit replacement, additional sockets, lighting upgrades, garden power and lighting, extractor fans and more.

Electrician in Pensilva. Free advice and quotes.



CSES@btinternet.com 07974499138



J. J. Child

Plumbing and heating engineer.
Oil appliance service,
repair and breakdowns.

40 years' experience.

Call John:
01579 362336
or
07837 921086



PENROSS

Rosecraddoc Lodge Holiday Bungalows
(Between Pensilva & Liskeard)
Perfect for family & friends coming to visit!

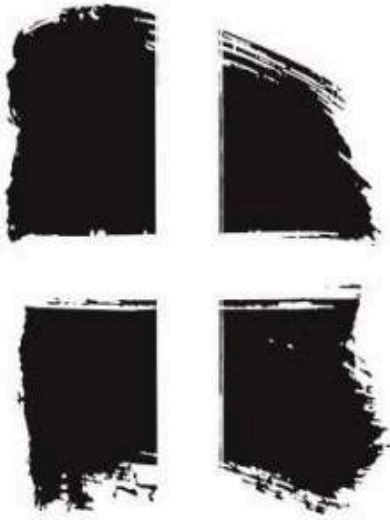


Sleeps 4

Sorry no pets or smoking

Tel: Julie 01579 362221

Email: penhargetfarm@gmail.com



Right-on 
Plumbing &
Maintenance

Gareth Haimes

Tel: 07947353682

**KILN DRIED
FIREWOOD**

MATTHEW

07884 112692



Heel 2 Toe Footcare

Tired Aching feet.

Corns, Hard skin, Verruca.

Fungal infected toe nails, or toe nails
require cutting.

Diabetic feet also treated and
regularly checked.

I can help to keep your feet looking
and feeling good.

I am a trained Foot Health Practitioner
to Diploma Level, fully insured & DBS
checked.

I can do home visits via an
appointment.

**Call Penny: 07746 926146 for
further information.**



Local Accountant offering fixed fee accounting services

With over 25 years experience, I am a fully qualified, friendly, local accountant

- ✓ Annual Accounts for Sole Traders and Partnerships
- ✓ Book Keeping & Payroll
- ✓ Personal Tax Planning
- ✓ Company Accounts
- ✓ Business Support & Advice

- ✓ Self Assessment tax returns
- ✓ iXBRL tax filing
- ✓ Tax investigation Fees Insurance
- ✓ Company Secretarial work
- ✓ Tax calculations for Sole Traders and Partnerships

Kate Vaughnley FCCA - Chartered Certified Accountant

Website : www.kvaccountingsolutions.co.uk or Email : katevaughnley@gmail.com

Telephone : 01579 532622 / 07725 004152

Matt's Windows

Repair of Windows, Doors & Glass Unit Replacement

Making draughty windows great again!

T: 01579 641228

M: 07533 387368



Millennium House

Friday 5:30pm

Saturday 8am & 9:30am

Hayley 07966370233

slimmingworld.co.uk 

SEASONED LOGS



Telephone Jonathan
Mobile 07966 070725

or

01579 363157



Charlotte Louise Nails Liskeard

Check out my social media
for the latest promotions
and inspiration

07 435 706 183

charlottelouisenails@hotmail.com



@charlotte.louise.nails



@Charlotte Louise Nails

10% discount when using
code NLP10

Book Now using this QR code



NICOLA GREENE

BSc (hons) Podiatry MChs

HPC Registered Chiropodist/Podiatrist

**Home Visit Practice treating all
your foot care needs:**

- Nail Cutting
- Corns and Calluses
- Thickened Nails
- Dry Cracked Skin
- Verrucae
- Foot Pain
- Diabetic Foot Assessments
- Wound Care

T: 01579 590027

M: 07786164205

E: nicki_greene@yahoo.com



Fencing
Paths & Steps
Turf & Astro turf
Driveways
Retaining walls
Digger work
Footings & foundations

Patios
Rendering
Decking

And more

Free no obligation quotes

Call Rob on:

**07518246666 or
01579 641802**

Debbie Hicks - Counselling and Psychotherapy

Caring, confidential counselling for all.

I work in a therapeutic relationship to help you understand yourself better.

I offer a warm, approachable, relaxed environment for you to untangle your thoughts and emotions.

www.debbiehickscounselling.co.uk

Email: debbiehicks10@gmail.com

07851 133782

More info on my website or by contacting me.



Window Cleaner Window Cleaner

Also any upvc cleaned

i.e. fascias, gutters, etc.

gutters cleared & unblocked

Please phone Rob

01579 384435

079 9099 6886

Window Cleaner Window Cleaner



**Kiln Dried Firewood
Kindling & Firelighters
Eco Heatlogs
LPG Bottled Gas
Patio, BBQ & Camping Gas
Coal & Smokeless Fuel**




0800 8021 223

sales@loganslogs.co.uk

www.loganslogs.co.uk

PensilvaCars

01579 363516

- ✓ MOTs Class 4
- ✓ Service
- ✓ Repair
- ✓ Tyres
- ✓ FREE Courtesy Car
- ✓ Car & Van Sales
- ✓ Diagnostics
- ✓ Air Conditioning
- ✓ 

We have offered a supply, fit & balance of tyre service for 10 years at competitive prices.

Most of our tyres can be supplied the same day.

LOCAL RECOVERY £45.00

www.pensilvacars.co.uk

pensilvacars@hotmail.co.uk

We can service and repair your car to manufacturer specification, keeping your dealer warranty without main dealer expense.

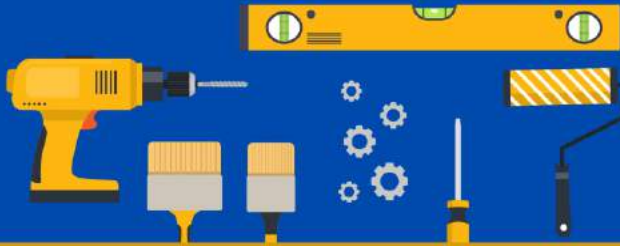


TOOL LIBRARY

& Hire Hub!



Unit 2, Barras Place, Liskeard PL14 6AY



Tools, DIY, Garden, Camping & Kitchen Equipment, Homeware & many more items available to hire. Book online or visit us at Community Treasure Chest. Annual membership £20. Hire fees from only £1!

Why buy when you can borrow!

£5 OFF
Membership
Quote
'Parish Pump'

Call 01579 344597 for details
www.communitytreasurechestcic.com

Liskeard Community Fridge

Opening hours vary

Share More

...an innovative resource for everyone in the community, with the aim to make use of food that would otherwise go to waste.

LCF is easy to use... Bring a bag... Take only the food that you will use... Saving good food from going to landfill

Waste Less

£24 Annual Membership
£2 off quote "Parish Pump"

01579 344597

Situated on the ground floor at Community Treasure Chest. Members can visit the fridge on selected days of the week

www.communitytreasurechestcic.com
Unit 2, Barras Place, Liskeard PL14 6AY

COMMUNITY TREASURE CHEST

Your Old is Someone's Gold!

Discover the future of affordable, sustainable fashion, furniture & homeware!

Swap Shop & Thrift Events too!

Preloved & upcycled furniture

Antiques and collectables

Reworked, Vintage clothing & new life fashion

COMMUNITY RECYCLING HUB

Donations welcome. Please call us to book a drop off/ collection slot!

Opening Hours

Mon	Closed	Fri	9 - 3
Tues	9 - 5	Sat	9 - 3
Wed	9 - 5	Sun	Closed
Thur	9 - 6		

01579 344597

Unit 2 Barras Place Liskeard PL14 6AY
www.communitytreasurechestcic.com

£2 Voucher
T&C's apply. See website for details

Scrapperdashery

DO YOU HAVE A CREATIVE IDEA BUT DON'T HAVE THE MATERIALS, SKILLS OR TOOLS TO DO IT ?

MAYBE YOU NEED INSPIRATION TO FINISH THAT LONG OVERDUE PROJECT!

A SAFE WORKSPACE FOR ALL THE COMMUNITY TO CREATE & COME TOGETHER!

Visit our Scrapperdashery full of multi media materials & tools. Just book your workspace for £3 per hour. Open every Thurs 9am - 6pm & Sat 9am - 3pm. Free tool hire to members!

COMMUNITY TREASURE CHEST

Tel: 01579 344597
Unit 2 Barras Place
Liskeard PL14 6AY

www.communitytreasurechestcic.com

1 hour FREE!
Quote 'Parish Pump'



CASTLE VETS

Local independent veterinary practice

Pets & Farm

NOW OPEN

Monday - Friday

8.45am - 6pm

6B Heathlands Road, Liskeard, PL14 4DH



liskeard@castlevets.org
01579 208072





Pensilva & St Ive Post Office Service

Pensilva: Through the coffee shop on the 1st floor of Millennium House

Tuesdays: 9am to 1pm.

Wednesdays: 9am to 12 noon.

Fridays: 9am to 12 noon

**The Millennium House
coffee shop is also open on
these mornings.**

.....
St Ive: At St Ive Village Hall

Wednesdays: 10:30 to 11:30am

**Coincides with the St Ive
Village Hall Coffee Morning**

Pensilva Stores

Amazing Value



- ✓ Fantastic Special Offers every month!!! (See store leaflets)
- ✓ Come and Check out our great deals on Wine, Beer and Spirits
- ✓ Local Produce: Homemade Butter and Clotted Cream, Meat from our local butcher
- ✓ Cornish Fresh Fruit and Vegetables
- ✓ Fresh Bread, Pasties and Cakes
- ✓ Take Away Coffee, tea and hot chocolate
- ✓ Newspapers and Magazines, Greeting Cards
- ✓ Paypoint, Lottery

Friendly Staff + Service with a Smile !!!

Pensilva Stores is a family run business who have been serving local people and visitors for more than 21 years.

Higher Road, Pensilva, Liskeard, Cornwall PL14 5NQ

Tel: 01579 362547

