



Just some of the 81 different displays for the Nativity event held at St Ive Parish Church - more inside!

DISCLAIMER

The articles appearing in this magazine do not necessarily represent the views of the Parish Council nor of the Parish Pump Editor.

Parish Councillors Telephone List

Alan Moss (chair)	01579 362064	Marlene Carr	01579 362919
Rosemary Farley	01579 384810	Martin Corney	01579 382450
Tony Hodson	079 7353 6964	Nigel Gisby	01579 363096
Paul Mann	01579 363757	Nigel Libby	079 6889 1814
Ivor Vaughan (vice chair)	079 7993 4604	Patricia Steer	01579 363096
James Bruce	074 1119 2645	Craig Vaughley	01579 364083
Steve Willis	01579 363096		

Your Cornwall Councillor is **Sharon Daw** - 078 3737 9305 cllr.sharon.daw@cornwall.gov.uk

Meetings of St Ive Parish Council

Meetings are held on the second Monday of every month, except August and December when no meeting is held. Please see the website for meeting dates, agendas, and minutes.

<https://st-ive-parishcouncil.gov.uk/minutes-agendas/>



Police Community Neighbourhood Office

Your Community Support Officer is PCSO Steve Edser 30173
Email: CIOSNBMLLST@devonandcornwall.pnn.police.uk

To report a crime call 101 or go to www.devon-cornwall.police.uk

In an emergency call 999

Contact Details for St Ive Parish Council and Millennium House

Address for correspondence:

Millennium House, Century Square, Pensilva PL14 5NF

General Parish matters should be raised initially with the Parish Clerk, Jenny Hoskin, who will present them to the Parish Council
01579 363096, email: **stiveparish@btconnect.com**

For finance matters for the Parish and Millennium House, contact
John Body
01579 362102, email: **millenniumhouseadmin@btconnect.com**

Millennium House enquiries and reservations to Vanessa
01579 363096 email: **ness.mhouse@gmail.com**

Parish Pump Submissions

Via email only to **stiveparishpump@gmail.com**

The deadline for submissions is the 18th of the month. Please email your text submissions directly in the email body, and attach any images. Full, half, or quarter page designs can be sent as JPG, PNG, or PDF files.

Advertising Costs

Please note that all advertising must be paid for prior to publication.

Two months free when purchasing for a year.

Quarter page: £10 per month, or £100 for 12 months

Half page: £20 per month, or £200 for 12 months

Full page: £33 per month, or £330 for 12 months

(All prices are inclusive of VAT)

Letter from the Editor

Change is all around us at the moment and it feels like we're all just trying to muddle through and hope this year is better than the last; that there won't be another thing to add to the list of polycriseses. Our defence secretary is warning of war within five years. COVID is now endemic. The seasons are weird; gardeners will know that the flowers just don't know what to do lately. The climate is changing faster than we can adapt to it, and the one in a hundred year events that caused massive change to those living through them will now happen every decade—or worse. So, there's that.

But as a technology journalist, those topics aren't my expertise. AI is.

It's thought that AI will make 40% of us jobless within a few years. As someone involved in all levels of technology for nearly three decades, this feels like a pivotal moment, one of those profound technologies that will change everything, forever... like the internet, or the iPhone.

Some people hate AI because it makes a mockery of human creativity. We were promised a techno-utopia where robots do the boring stuff. Instead, they're drawing pictures and writing poetry while we do the hard manual work!

Is AI-generated art even art? Is it "original" given its had to be trained on hundreds of thousands of other artists? Well, consider how many human artists have never looked upon another piece of art and learned from it. If a human was kept in a box their whole life, would they be able to produce a meaningful piece of artwork? I've hidden a drawing made by AI somewhere in this issue—see if you can find it. It's an original piece that doesn't exist anywhere else. AI doesn't just copy and store things in memory for later retrieval, like Google. It figures out how to replicate the very essence of what it's been trained on. It learns, in just the same way a human might having studied a particular painter their whole life. The difference is that AI is terrifyingly good at it.

The latest ChatGPT models are already better at a lot of tasks than most

of us. If you haven't already, I'd urge you to go and try out some of the latest AI models. You can try any of these for free:

- bard.google.com
- bing.com/copilot
- chat.openai.com

I use a premium version of ChatGPT every day. I use it to learn new programming languages, to check my code for errors. I ask it to generate comprehension and vocabulary tests for my son, using topics he's actually motivated to read. I use it to summarise or edit my own creative writing, or just to help me write more. I make copyright-free images for use in blog posts. It's already made me many times more productive than I was last year.

AI feels like a superpower.

So what's all the worry about? You might have heard of an "AGI", and it's rumored that OpenAI is close. An "Artificial General Intelligence" would have the reasoning and self-learning capabilities of a human, able to be set a task, then work out how to achieve that goal—all on its own. The fear is that given internet access (which all these AI models already have), it might come up with novel solutions that we couldn't possibly have protected against.

Some think that AI will destroy us. It sounds a bit far fetched, but I suspect they're worried because they know how we treat "less intelligent" lifeforms. We destroy their habitat, we crush them, we experiment on them, and we eat them. It's no surprise we're worried about how an AI will treat us once it's *surpassed* our intelligence level. It's learnt from the most ruthless of species, after all.

Whatever comes our way this year—and I know AI will come for my job eventually—my own plan is simple. I'm embracing AI as much as I can now, because the first jobs to go will almost certainly be from people who aren't using AI already. Things are accelerating now at an exponential pace: don't get left behind.

James Bruce (Parish Pump Editor)

Community News

Bev Casban Memorial Charity: Money has recently been raised for charity in memory of Bev Casban. Ray Southcott yet again put up his amazing Christmas decorations outside his house in Amanda Way and the charity collection box contained £240. The Bev Casban Memorial Skittles night held at Millennium House raised £260. The £500 raised has been donated to the British Heart Foundation.

Congratulations to Alison Berry for winning the skittles competition for the 4th time.

Sent by Andy Hassam

NIGHTINGALES are a new West Devon based organisation delivering medical and humanitarian aid to Ukraine.

The medical aid that they are currently collecting is: collars, splints, crutches, wheelchairs, walking frames, gauze, plasters, wound closure steri strips, dressings, syringes, eye wash, eye dressings, inhalers, blood pressure monitors, blood sugar testing kits, aid to support Paramedics providing Front Line response, waterproof boots, winter jackets, torches, power banks to charge phones etc, metal detectors.

Also, over the counter medicine e.g. Paracetamol, Ibuprofen, Immodium, decongestant nasal spray, Antihistamines e.g. Piriton, Loratadine, Cetirizine



Donations can be dropped off at the Millennium centre for collection. If you are unable to drop items off, please contact Janey Bryson on 07808663749 to arrange collection. *THANK YOU*

200 Club December

1st No 171 Miss K. Restorick
 2nd No 103 Mr B. Barnard
 3rd No 83 Mrs J. Rendle
 Thank you

Pensilva WI

We had a good turnout of members on a bitterly cold evening for our first meeting of the new year. And what a treat we had in store, when the speaker for the evening Fiona Hammon gave a demonstration of flower arrangements for the winter. Who would have thought such stunning arrangements could be produced using just a few bits of sewn wood, spice jars and a charity shop bowl. We came away with lots of ideas of how to produce winter arrangements at very little cost. Four members were lucky enough to each win one of these in the raffle. She was warmly thanked by Sue Turpin.

We are reminded of the skittle afternoon with a bring and share tea on **Saturday 17th February 2-4pm**. No charge but a raffle prize would be appreciated. Family and friends are welcome to join us.

Horticultural Show schedule meeting on **Monday 26th February at 7pm**.

Spring at the Eden Project, **Thursday 21st March at 10am**. Closing date for applications 22nd Feb.

Five birthday girls this month. Posies and cards were presented to Jean Hoare, Belinda Smith, Zandra Patten, Jean Cole, & Di Whittle. Thank you to Verna for once again making the lovely posies.

Competition winners this month: A small hedgerow arrangement. 1st Frances Tucker, 2nd Jenny Rendle 3rd Irene Elliott. Flower of the month. 1st Jenny Rendle, 2nd Frances Tucker, 3rd Verna Dawe.

Our next meeting is Wednesday 14th February 7.15pm at Millennium House, Pensilva, when we shall be Easter Crafting with Alison Willis. Competitions. A Homemade Valentines Card and the Flower of the month. Visitors and new members welcome.



Millennium House

Hi Parish Pump Readers,

What a chilly January we have had! I hope you have all managed to keep warm?! I have seen a few of you keeping warm and enjoying a bowl of soup and a bread roll for a donation at the warm space available in Millennium House. I know there have been some delicious cakes and hot drinks too! For anyone interested, it is a Warm Space held on Thursdays until the end of March in the coffee shop from 10.30am until 2.30pm. Everyone is welcome!

This month we have ...

Thursday 1st February 2024 - a new addition to Millennium House with the Stay 'n' Play Toddler group from 10am to 11.45am every Thursday. Organised by a local Mum for toddlers to play, get creative and socialise.

Walking Netball **every Thursday** from 4pm to 5pm. Followed by Aikido kicking off from 7.30pm, also every Thursday with Ron!

Friday 2nd February 2024 - our weekly Friday events of Penmill Art group in the morning. Followed by Slimming World and Youth Club in the evening!

Saturday 3rd February 2024 - Slimming World, every Saturday morning with a fun group of people at 8am & 9.30am.

Sunday 4th February 2024 - Pensilva Market Day, from 11am to 2pm with plenty of sellers, refreshments and a little craft station for kiddies to make a keepsake or gift for £1 each.

Monday 5th February 2024 - you can join Mims gentle exercise group every Monday morning 10.30am to 12 noon. Yoga for everyone from 5.30pm with Laura! Finishing off with Badminton every Monday and Tuesday evening from 7.30pm.

Wednesday 7th February 2024 - learn to Sing & Sign with Natalie. There are 3 age appropriate groups from 0 to 30 months.

Thursday 8 th February 2024 - Come and dance with the Country Dancing group fortnightly from 7pm.

Sunday 11th February 2024 - Wedding Fair from 11am to 3pm. Free entry! Refreshments available on the day too!

Thursday 15th February 2024 - Foot care drop in with Naomi Turner from 9.30am to 2.30pm. Please contact Naomi for more details on 07809690385.

Saturday 17th February 2024 - W.I. games afternoon from 2pm to 4pm.

Sunday 18th February 2024 - come along to Tess' Tea Party from 2pm to 4pm for a little bingo, raffle and some lunch!

Wednesday 21st February 2024 - doors open for Bingo at 7pm and eyes down at 7.30pm. This is every 3rd Wednesday of the month!

Friday 23rd February 2024 - doors open at 7pm for Pensilva Film Club and The Great Escaper starts at 7.30pm.

Saturday 24th February 2023 - Family Bingo from 2pm all are welcome! Our Kid's Christmas bingo was such a hit and we would like to continue it. £2 a book, refreshments available and plenty of fun for the little ones and adults too!

Sunday 25th February 2024 - get antiquing from 9am to 3pm at the Antiques Fair every last Sunday of the month!

We have many birthdays, anniversaries and weddings booked in this year already! If you would like to get yours booked in please email mhouse@gmail.com or call 01579 363 096 to get the date you would like before it goes! Have a Fun Filled February!

Vanessa

Film Club

Well, what can I say—great audience numbers for January's offering of "Elvis" despite having to sit for 2.5 hours! The film shed light on the exploitation of Elvis by his "manager" which I fear is a tale too often heard when it comes to such situations. The toll of "celebrity" that Elvis carried certainly contributed significantly not only to the breakdown of his marriage but also, eventually, to his very sad and premature death. Again, a story all too often heard about those in the music business.

Our next film is "The Great Escaper" starring Michael Caine (not my favourite actor I have to admit) playing the part of Bernard Jordan who, in 2014, absconded from his care home in Sussex in order to attend an event in France to mark the 70th anniversary of the D-day landings. Significantly Michael announced his retirement at the premiere of the movie and Glenda Jackson, who plays his wife, died before the film was on general release. Quite a swan song for these two.

As I mentioned previously, the dates of our films will be "a moveable feast" for much of this year and just to give you advance notice that the March showing will be on Fri 8th.

As always, thanks for your continued support.

Enquiries to - **judy.two@outlook.com** or 01579 208836
Pensilva Film Club, in Association with C-film, part of Creative Kernow



Pensilva Community Association and C-Fylm Present

PENSILVA FILM CLUB



FRIDAY, FEBRUARY 23rd
DOORS OPEN 7PM, FILM STARTS 7:30PM
THE GREAT ESCAPER

£3 for C-Fylm members

Non-members can join on the door for £6, which includes your first film.



Based on a true story, The Great Escaper follows a World War II veteran who sneaks out of his care home in the summer of 2014, to France, to attend the 70th anniversary commemoration of the D-Day landings in Normandy.

DRAMA - 1h36m

SCAN FOR TRAILER ----->



PENSILVA



Free
Entry

Featuring local sellers,
craft stalls, indoor carboot,
baked treats, and live plants.
Refreshments available and bar!

£5 per
table



←← MILLENNIUM HOUSE PRESENTS →→

PENSILVA MARKET DAY

**FIRST SUNDAY OF THE MONTH;
NEXT MARKET DAY IS...**

FEBRUARY 4TH

SELLERS FROM 10am; BUYERS 11am–2pm

Call Vanessa on 01579 363096 or email
ness.mhouse@gmail.com
to book your table or other enquiries

PRINCESS ROAD, PL14 5NF

SCAN TO FIND
MILLENNIUM HOUSE
ON GOOGLE MAPS





Sponsored by Pensilva Community Association

At Millennium House

Coffee Shop



Soup & Roll
WARM SPACE

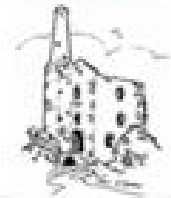


Thursdays, starting 4th January
10:30am to 2:30pm

Join us for a soup and roll.
Tea, coffee, and hot chocolate.
A warm welcome to everyone!



Total Triage



Accurx Patient Triage is an online form to contact the practice about your health. Our surgery will be moving to a Total Triage system from Thursday 5th October. The model is as follows:

All patients submit an AccuRX patient triage from their smart phone or computer, the link for which is on our website. If you do not have a smart phone or are unable to do the online form you can call the practice and the reception team will complete the form on your behalf.



All clinical patient triages are reviewed by a GP.
All triages will be looked at the same day and responded to within 72 hours, unless deemed urgent.



Upon review the team will contact you with an appointment or will signpost you to the correct service



THE MILLENNIUM HOUSE
CRAFT ROOM, UPSTAIRS



SPONSORED BY
PENSILVA
COMMUNITY
ASSOCIATION

PENSILVA

STAY 'N' PLAY TODDLER GROUP

£3 PER CHILD
SIBLINGS £2

THURSDAYS

10AM - 11.45AM

GREAT TOYS
SENSORY PLAY
CRAFTS
AND MORE...

ADULT AREA
TEAS, COFFEES &
BISCUITS

SNACK INCLUDED



St Ive & District Gardening* Club



We would like some new friends

*The title isn't all as it seems...it's not **all** about gardening! In the winter months we have speakers who give amazing talks on all kinds of subjects, in the past we have had:

A bee keeper, a hedgehog helper, a CoastWatch volunteer, Cornish Clotted Cream legend & an historian.

In the summer months we visit local places (ok this is usually gardens!) & have a private tour.

All year around there are refreshments & a raffle!

It is an informal, relaxing & friendly...we would really love to share this with some new people.

If you would like to join us our next get together is:

Monday 5th February at 7:30pm in St Ive Village Hall (PL14 3LZ)

We look forward to welcoming you!

**St. Ive Village Hall, The Cross PL14
3LZ**

Monthly Hall Programme

**Family Prize BINGO
Saturday 24th February**

7PM – 7.30PM (eyes down)

Refreshments available, or bring your own bottle.
Raffle

**Lasagne Supper and Skittles
Saturday 23rd March**

7pm

Refreshments available, or bring your own bottle
Raffle

Bookings: Beth 01579 382066/07476 156659
Text, or leave a message

St. Ive Village Hall, The Cross, PL14 3LZ

HALL HIRE

£5 an hour

Includes use of the kitchen and electric (except wall heaters, which are on a £1 coin meter)

For bookings ring Beth: 01579 382066

Or 07476156659

Regular Group and Activity Timetable

Gardening Club	1st Monday monthly 7.30pm	01579 382762
St. Ive Snooker Club	Mondays and Thursdays 7pm	01579 382315 R. Bunkum
Mobile Post Office	Wednesday 10.30am – 11.30am	
Coffee Morning	Wednesday 10.30am – 12md	

Methodist Sunday Service	Check timetable in Parish Pump for services	Kathryn or Keith Mutton 01579 382334
---------------------------------	--	---

St. Ive Institute and Village
Hall Committee

A.G.M.

To be held in St. Ive Village Hall,
The Cross PL14 3LZ

Date: Tuesday February 20th

Time: 7pm



SATURDAY 24TH FEBRUARY

7pm – 7.30pm (eyes down)

**Raffle and Refreshments Available, or Bring
Your Own Bottle**

£5.00 a book £1.50 a flyer



**St. Ive Village Hall
The Cross, St. Ive
PL14 3LZ**

1st Monday of the month

7.30pm

New members welcome

St. Ive Village Hall PL14 3LZ

Snooker Club



Monday and Thursday Evenings

7pm

Contact Ray Bunkum

01579 382315

Community Speed Watch



Community Speed Watch aims to encourage safer driving, to reduce accidents, and to eliminate deaths – *Vision Zero*.

The Liskeard CSW Group operates at: East Taphouse, Dobwalls, Doublebois, Liskeard (3), St Ive (2), Pensilva (3), Fore Down (2), Widegates, and Upton Cross.

Other groups operate throughout the county / country. To increase the frequency of observations, and to cover additional locations, a requirement exists for more team members – there could be a site within walking distance.

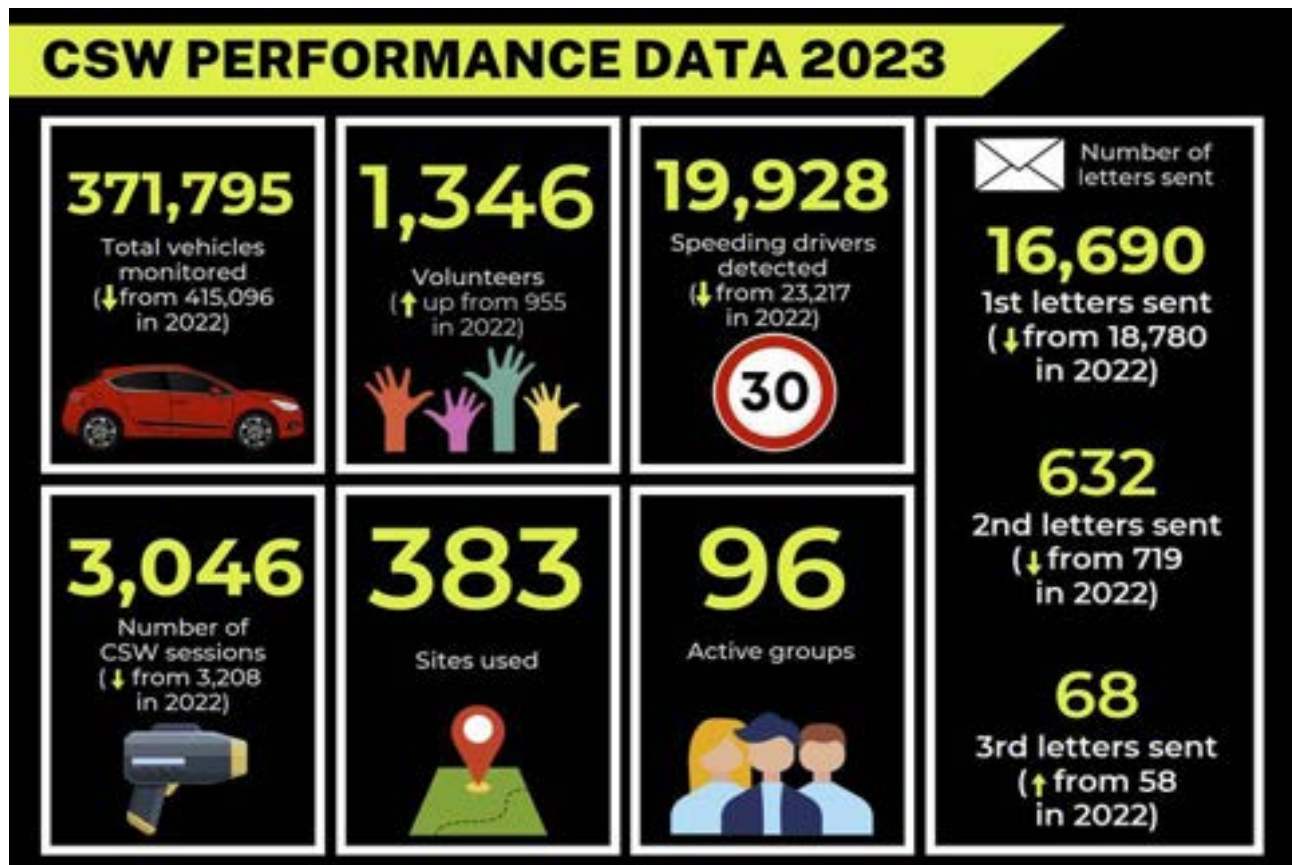
Full details of how Community Speed Watch operates can be found at:
<https://www.communityspeedwatch.org>

Registration is simple, with online theory training, and following successful completion, members are contacted, to take part in practical training (speed monitoring), including equipment use.

Each observation (which only takes place in dry weather conditions) lasts for one hour, with a full team briefing / debriefing, and agreement reached on next activity date and time. Individuals can choose frequency of involvement, which ideally would be at least six times per year. Teams are made up of a minimum of two members (preferably three, and no more than four).

This is an opportunity for individuals to contribute to the safety of their community.a

Contributed by Andrew Collins






MILLENNIUM HOUSE PRESENTS

FAMILY

Games fun & prizes

BINGO

11	18	39	57	75
 37		55	6	
25	47	64		8
10	26	36	57	75

SATURDAY, FEBRUARY 24TH
FROM 2PM

At Millennium House

FOURTEEN + YEARS OF WILDLIFE WATCHING
IN THE PARISH OF ST. IVE

Since moving to the Parish at the end of 2009, I have been photographing and recording the wildlife which I see at my home on the edge of Pensilva on a daily basis. This month I will tell you about one of the most common of birds...

...**THE WOOD PIGEON**



The wood pigeon must be one of the most common birds of the countryside. So familiar, that we almost forget to notice it! It is a large bird and the white patch on its neck is probably the most useful feature in distinguishing it from other pigeons. Its dipping flight pattern is also distinctive. If not seen, it is often heard with its 'COOO coo coo-coo coo' rhythmic call and the noisy flapping of its wings as it takes off from a tree. The one above was flying low across our patio with a wall behind it rather camouflaging it, so I have removed the background.

Pigeons are frequent visitors under the feeders, helping to clear the ground below them of seeds rejected by other birds. Although much bigger than the other birds on or under the feeders, their neighbours are happy to feed alongside them. They will eat almost



any seeds, berries and green vegetables, making them something of a pest in a vegetable patch or farmer's field! Their method of drinking is thought to be unique among birds. They suck up water, using their beak as a 'straw'. I once observed this looking down from an upstairs window on leaves which each held a drop or two of water. A pigeon went from leaf to leaf dipping its beak into the water which disappeared as I watched.

Wood pigeons prefer to nest in wooded areas. They can breed at any time of year, but usually do so in the summer months. Pairing for life, both parents build a rather messy twig nest, into which the female lays two white eggs. If the eggs fall prey to predators or are damaged, they will lay another clutch, but they never lay more than two at a time. The young (squabs) are fed on what is known as 'pigeon milk'. This is actually a milk like secretion from the bird's crop, which allows them to extract enough protein from their vegetarian diet for the growing hatchlings. Other garden birds will feed insects to their young even if the adults are not insectivorous.

The breeding population of UK wood pigeons is thought to be about 5 million pairs. This remains fairly steady throughout the year. There is some movement throughout Europe, with birds from Scandinavia going to the Iberian Peninsula over winter. Some may stop off here and a few probably remain, but this does not seem to be well understood.

Wood pigeons appear to be quite clumsy birds and occasionally fly into a window. One bird (which survived the experience) left this amazing pattern of printed feathers on our kitchen window.



Pigeons are prone to predation. We have seen them taken by sparrowhawks on a several occasions. One memorable time, alerted by a sudden large cloud of feathers

exploding across the garden, we looked out to see a pigeon struggling to get free from a sparrowhawk. However, over the next few hours, the sparrowhawk returned several times looking in and around the pond where the pigeon was caught. Both we and the sparrowhawk scoured the area to try to find the pigeon (or its remains) but it seems we all failed. We assume the pigeon escaped, but how it managed without all those feathers, I will never know!



The Big Garden Birdwatch shows that woodpigeon numbers are increasing. It is thought that this may be connected to recent changes to farming practices, particularly the move from spring-sown to autumn-sown grain and increased production of oil seed rape.

The wood pigeon - a common bird with some unique features!

Unity Methodist Church

Sunday 4th February- 11.15am. United Service at St Ive Parish Church.

Sunday 11th February - 10.30am United Service at St Ive Village Hall, led by Rev Jonathan Budd.

Sunday 18th February - 11.15am United Service at St Ive Parish Church. 6pm Greenshoots United Service at Blunts MC led by Mrs Anita Nicholson.

Sunday 25th February - 10.30am United Service at St Ive Village Hall led by Keith Mutton.

A warm welcome awaits at all the above meetings.

The Chattermakers craft group will meet at the St Ive Village Hall on Thursday 8th and Thursday 22nd February at 7.30pm. A chance to catch up on that craft you have been meaning to get back to whilst having a chat with others over a cup of tea.

All welcome. For more details or to be added to the WhatsApp reminder list, contact Kathryn on 01579 382334.



The Nativity Display Event that was held at St Ive Parish Church on the weekend of 6th/7th January was very much enjoyed, by the several people who kindly loaned their Nativity scenes, and the visitors who came to see it.

A total of 81 different sizes of displays. From wooden, knitted, cross stitch, fabric banners, soft toys, candles, stone, ceramic and many more. Thank you to everyone who helped in anyway to support this Event.



St John's Mission Church Pensilva Good Grief Cafe



Wednesday 21st February
3.00 pm

We can grieve for many reasons:
the death of a friend or relative;
the diagnosis of a friend or relative
with dementia or a terminal illness;
loss of mobility or driving licence;
closure of your place of worship;
closure of a support group;
the loss or illness of a pet;
the loss of freedom;
the loss of a job;
homelessness;
the loss of stability in society.

The Good Grief Cafe is for anyone
who is grieving for any reason.
Come for company, for friendship.
Eat cake, drink tea and coffee.

Chat if you want to,
or just be there.

Everyone is welcome.

For further information
contact Geoff 01579 362698

Pensilva



MemoryCafé

Thursday 22nd February
2.00 to 4.00 pm

If you have
memory problems
or
you are a carer
for somebody
who does
and
would like to
meet others
who understand
your situation
then join us at
St John's Church

Contact Geoff 01579 362698

Neighbourhood Development Plan

The NDP Committee are currently working hard to create a plan for our Parish. We have engaged the services of an expert, and he will be formulating and guiding us through the production of this very important document for our Village. It will affect the future development and growth of our area.

Over the next couple of months there will be an opportunity for you all to complete a new survey. Details of how to take part in the survey will be published in the Parish Pump in the coming months.

You will also be able to keep up to date with how things are progress by going to the Neighbourhood Plan website:-

plan4stive.co.uk

We also hope to hold an event at Millenium House and the St Ive Village Hall. Here the whole community will be able to come along and find out how we are progressing with the NDP, and have the opportunity to ask questions and share views.

The Parish Council want as many people involved as possible to help with this task. So if you do have some spare time, and would like to volunteer then please contact the Parish Clerk:

stiveparish@btconnect.com

***NDP Committee
St Ive & Pensilva Parish Council***

St John's Mission Church

A united congregation of the Church of England & the Methodist Church

Services for February 2024

Sunday	4 th	11.00 am	Geoff Cox
Sunday	11 th	11.00 am	Barry Hocking & Carol Morse
Sunday	18 th	11.00 am	Rev Martin Sellix <i>Holy Communion</i>
		3.45 pm	Tea Time Church for children & their families
Sunday	25 th	11.00 am	Rev David Moss <i>Holy Communion</i>
Thursdays		10.00 am	Morning Prayer Fellowship

FEBRUARY EVENTS Please see posters for full details

Sunday	18 th	3.45 pm	Tea Time Church for children & their families
Wednesday	21 st	3.00 pm	Good Grief Café
Thursday	22 nd	2.00 - 4.00 pm	Memory Café
Tuesday	27 th	2.00 - 4.00 pm	Stitch, Knit & Natter

For further details or if you know of any illness or need in the village, please call Geoff, 362698 or Frances, 363718

MILLENNIUM HOUSE COMMUNITY COFFEE SHOP

**Open Tuesdays, Wednesdays, and Fridays
9am to 1pm (to coincide with the Post Office)**

We, the volunteers, opened the Coffee Shop in 2017 with the hope of giving something back to the community. The atmosphere is relaxed, making it an ideal place to enjoy meeting up with friends for a cuppa and a chat. A warm welcome is assured. We would like to say a huge "Thank You" for your continued support.

**Tuesday
29th
February**

**St John's
Mission Church
Pensilva**

**on the
last Tuesday
of the month**

**2.00
to
4.00 pm**

**Contact Kathleen
01579 363686**



**stitch
knit and
natter**

Do you enjoy stitching,
knitting, crocheting?

Join our friendly knit and natter group.
Come and meet new friends and swap tips
and ideas – all ages and abilities welcome!

Drop-in!

There is no charge
for this activity but there
is a donation box if you
would like to make a
cash contribution.

Teatime Church



For children and their families

Playing Games

Singing and Praying Together

Sharing a Bible Story



Sunday 18th February

3.45 pm

**St John's Mission Church
Pensilva**

Eating Tea

For more information
contact: Rev Becca Bell
revbeccabell@gmail.com



ST JOHN'S MISSION CHURCH

PENSILVA



**Thank you to everyone who donated to our
Christmas collections for children's charities.**

£324

**was raised and will be shared between
Action for Children
&
The Children's Society**



Charity No. 1094857

Pentiddy Community Woodland Volunteer Days 2023/24 Everyone Welcome

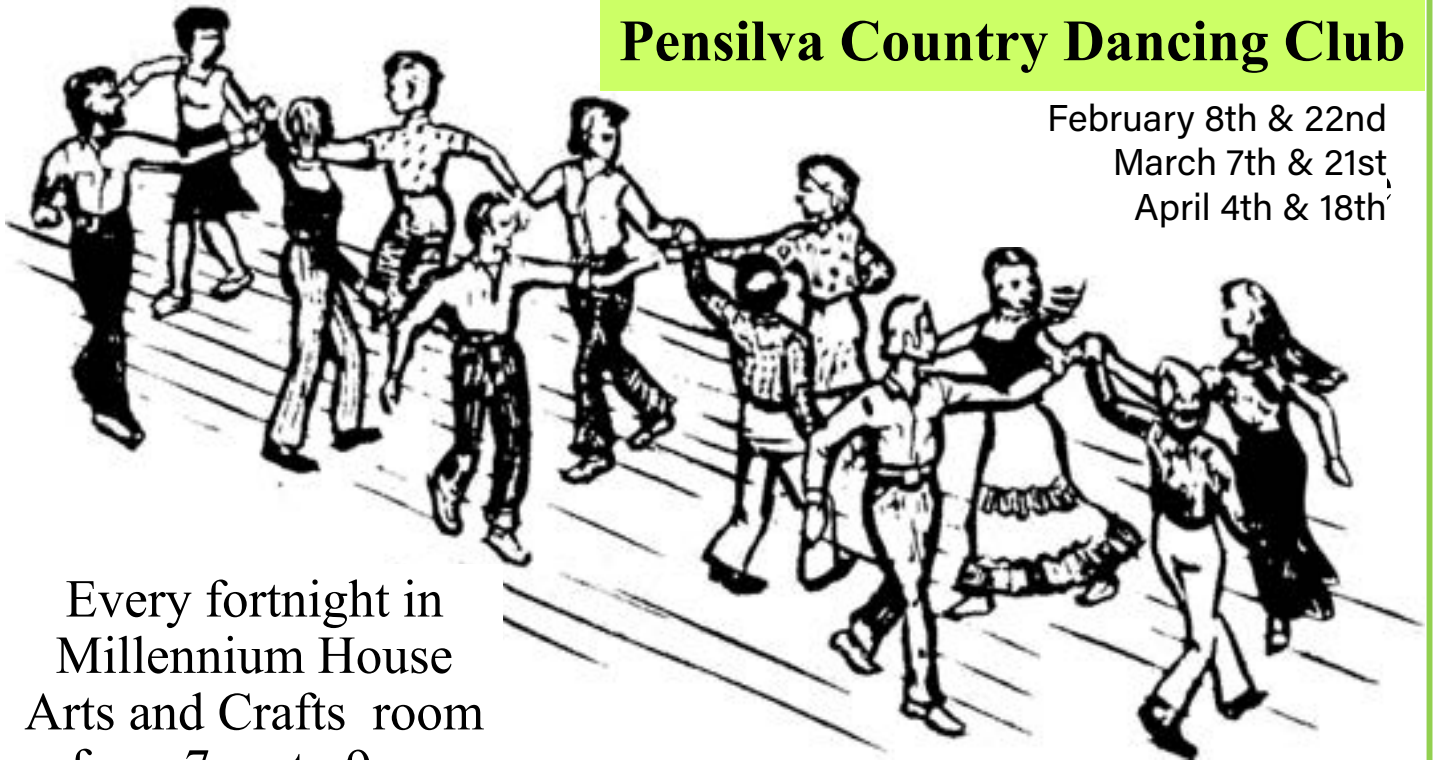
Sunday 25th February
Sunday 24th March
11:00 - 15:00

Come share some good company and productive work.
Improving the woods for all that use it.
Soup, bread, hot drinks and cake supplied.
Please bring gloves and hand tools if you have them.
We have some tools and gloves. No experience needed.

Any questions please call 07989330887, or via the facebook page
mail@pentiddy.co.uk

Pensilva Country Dancing Club

February 8th & 22nd
March 7th & 21st
April 4th & 18th



Every fortnight in
Millennium House
Arts and Crafts room
from 7pm to 9pm

For information ring Frances 01579 363718

 **YOUTH GROUP**
FOR 11-19 YEAR OLDS
UP TO 25 YEAR OLD WITH SEND.



EVERY FRIDAY 5:00 TO 7:00 PM

FREE OF CHARGE & OPEN TO ALL

VENUE: MILLENNIUM HOUSE, PENSILVA, LISKEARD PL14 5NF

ACTIVITIES, DRINKS/SNACKS, & A CHANCE TO HELP BUILD A YOUTH LEAD GROUP IN YOUR AREA.

FIND OUT ABOUT US @:
WWW.SERVICES.ACTIONFORCHILDREN.ORG.UK/KERNOWCONNECT

Ever tried... **Ladies Walking Netball?**

Come along to Millennium House, Pensilva



**Thursdays
4.00pm - 5.00pm**

£2 per session

**For further info contact rosemaryfarley@gmail.com
or Tel. No. 01579 384810**

All Being Well

We are still open for three mornings a week. A maximum of six members can now attend at one time.

Opening hours:

Monday, Wednesday and Saturday, 9am to 1pm.

Maximum six members at a time for each of three slots within each session: 9:00 to 10:20, 10:20 to 11:40 and 11:40 to 13:00

Prior booking is essential

To book yourself in or for any enquiries, call in at the gym or telephone on **01579 363890**, during the opening hours listed above.

23 years working in our local community to improve health, fitness and well being.



Positive + Resilient + Together

Thinking about car sharing?

Save money and reduce your carbon footprint, in one easy move.

A local resident got in touch with us to tell us how combining with a “Buddi” to share car journeys had saved them both “an absolute fortune”. Initial contact was via the site Liftshare, <https://liftshare.com/uk>. There’s no obligation, just enter details of a journey, regular or infrequent, that you would be interested to share, and see what comes up. You can accept or decline a potential Buddi.

Simple things like this make us more resilient as a community and as a society. If you are interested in joining our group and helping to make our area a better place to live, in whatever way, big or small, please contact us via email posicrp@gmail.com or phone 07768 130520. **Follow Us:** Intagram: togetherproject2022

**ROYAL
VOLUNTARY
SERVICE**

RVS WEDNESDAY CLUB, PENSILVA

Meetings are held every 3rd Wednesday of the month (not August) from 2 - 4.p.m. at Pensilva Village Hall. Entry fee £2 which includes Raffle and light refreshment.

21st February: Speaker and demonstration of Oakhouse foods.

20th March: All Recycling

17th April: Health and safety in the house

Everyone Welcome. For further Information please contact:

Cherry Woodhouse (Chairperson) 01579 363874

Marlene Carr (Secretary) 01579 362919

MELODI LISKERRET

- A mixed group, singing a variety of well known numbers including Folk & Cornish songs.
- Local to you!
- Weekly rehearsals in St. Ive – Gorfenna, PL14 3LX
- Friendly informal rehearsals with a tea break and biscuits!!
- **Free one-to-one professional singing tuition within a few weeks of joining!!**

For more information, please contact Gerald, secretary, on 01579 363881 or email: charaton@btinternet.com

PENSILVA VILLAGE HALL

We are now open and back in business!

Anyone wishing to book the hall for meetings, birthday parties or fundraisers, please contact Peter or Jackie Browning on **01579 363212** or email **peterpensilva@gmail.com**



Please note that as well as hall rent there is a coin meter for heating at 60p/hr.



Struggling with Sight Loss?

iSight Cornwall offers practical help to people living with sight loss in Cornwall including:

Low Vision: Advice for low vision aids

Assistive Technology: Advice on products

Benefits Advice: Assistance to claim entitlements

Equipment Demonstration: Advice on gadgets

Social Clubs & Activities: Links to clubs & activities in the county

For more details Telephone 01872 261110 or visit

www.isightcornwall.org.uk

MOBILE LIBRARY SERVICE

**Next visit to Pensilva is
FRIDAY 9th FEBRUARY 10:25-10:45
outside Victoria Inn**

The county library services visits every four weeks on Friday. You can browse the shelves, or pre-order books using the link (scan the QR code on the right):



<https://www.cornwall.gov.uk/libraries-museums-and-archives/libraries/mobile-library/>

Liskeard Repair Café

"If you can carry it, we'll do our best to mend it!"

What is a Repair Café?

We are a friendly group of volunteers, with repair skills in all kinds of fields, who come together once a month to help people make repairs to a variety of items, including clothes, furniture, electrical equipment and appliances, bicycles, crockery, toys, etc., etc. Also, if you like, you can sit with our repairers and learn new skills or simply get some expert advice. Alternatively you can spend time chatting with others whilst enjoying a free tea or coffee and cake or one of Ian's amazing toasties.

We are part of a nationwide network of Repair Cafes whose aim it is to create a more sustainable future and avoid the unnecessary disposal of items that with a simple repair will give them a new lease of life. But most of all, the Repair Café is a place for people to come together and see how easy and how much fun it is to repair things.

Repairs and refreshments are free, however any donations are gratefully received to help maintain the ongoing costs of running the Repair Café.

Where and when can you find us?

We meet on the 2nd Saturday of each month from 1pm – 4pm at the Liskerrett Community Centre, Varley Lane, Liskeard, PL14 4AP. There is a small amount of disabled parking at the Centre and plenty of other parking at The Cattle Market pay & display car park adjacent to the Centre.



More Information

You can find out more about us and updates before each Repair Café of what skills are likely to be available on the day on our FaceBook Page, just search for "Liskeard Repair Café."

Want to volunteer?

There is always room for more volunteer repairers. If you would like to join us either drop into one of our sessions, send us a message via our FaceBook Page or email liskeardrepaircafe@outlook.com

Dates of the next 2023 Repair Café:
(all from 1pm – 4pm)

Saturday 13th January

We look forward to seeing you.



Tamar Area Prostate Support (TAPS)



DON'T IGNORE THE SIGNS

- A need to urinate frequently especially at night
- Difficulty in starting to pee
- Weak flow
- Feeling that your bladder has not emptied fully

If you are concerned about any of the above symptoms
Please contact your Doctor

If you would like to know more about us please contact one
of the steering group listed below or email
tapsinfo555@gmail.com

**Come and join us on the Second Tuesday of the Month
10.00 at the Compton Park Engine House
Callington for a friendly chat and a coffee.**



Paul Mansell 01822 832179 - Harry Lawson 01579 383258

John Stewart 01822 833343 - Stephen Williams 07735 389883

Albert Doidge – 01822 832471

MILLENNIUM HOUSE

COMMUNITY CENTRE, AND DYNAMIC EVENT VENUE IN THE HEART OF EAST CORNWALL



Conferencing

We have four meeting rooms for all your corporate needs.



Function Room

For parties, discos, or just larger events; with adjoining kitchen and bar.

Our Facilities

Sports Hall

For sports or larger events requiring a stage, the sports hall is our biggest venue.



Coffee Shop

Providing tea, coffee and cake. And for something stronger, there's the Mel, a licensed bar.



**Enquire today:
01579 363096**

What Do We Do?

From wedding to wakes, kids or adults, corporate or community, we can host and cater your event. If you have an idea that's not covered here, get in touch and see if we're the right venue for you.

We're also home to:

- ✓ The Mel bar
- ✓ All Being Well Fitness Centre
- ✓ Post Office
- ✓ Sunflower Park kids playground
- ✓ Extensive playing fields
- ✓ Community Library

www.millenniumhouse.org.uk
PRINCESS ROAD, PENSILVA, PL14 5NF

ADVERTISING

A huge thank you to all our advertisers that support the Parish Pump each month: **without you we wouldn't be able to publish this valuable local resource.**

Please note that all advertising must be paid for in advance.
TWO MONTHS FREE when purchasing for a year.

Quarter page: £10 per month, or £100 for 12 months
Half page (this unit): £20 per month, or £200 for 12 months
Full page: £33 per month, or £330 for 12 months

(All prices are inclusive of VAT)

Contact stiveparishpump@gmail.com to enquire

THE MEL BAR OPENING HOURS

Monday: Closed
Tuesday-Saturday: Open 5 - 10:30pm
Sunday: 12 - 5pm

Under 18s are welcome in the bar with an accompanying adult until 9pm.
Dogs also welcome.





Group Travel

Day Trips & Coach Holidays

Enterprise Park, Midway Road, Bodmin, Cornwall PL31 2FQ Tel: 01208 77989

Coach Excursions & Tours 2024

7th - 12th April	Derbyshire & The Peak District
21st May	South Devon Railway & Rare Breeds Farm
25th June	Bicton Park Botanical Gardens
30th July	Meaders Lavender Farm & Cream Tea
17th - 21st July	Visit Eastbourne
13th Aug	Pecorama & picturesque Beer Village
10th Sept	Widcombe Fair
9th October	Goosey Fair, Tavistock
2nd November	Bridgwater Carnival
16th November	Longleat Festival of Light

Visit our website for all our excursions & tours.

Call: Dawn or Robin on 01208 77989 for bookings and brochure
website: www.grouptravelcoachhire.co.uk
email: grouptravelcornwall@btconnect.com

Bodmin MOT Centre

01208 77989

Garage Services
 MOT Testing Station
 Classes 4, 5 & 7
 Servicing & Repairs
 High Vehicles & Motorhomes
 Brake Test & Headlight Alignment
 Pre MOT Inspections
 Annual & Interim Vehicle Servicing
 ~
 Commercial interim inspections available
 including brakes and lights
 ~
 Helping you stay compliant

Bodmin MOT Centre
Enterprise Park, Midway Road,
Bodmin, Cornwall PL31 2FQ

Trystan Phillips

Carpentry/Joinery & Property Maintenance



35 Years' Experience

All aspects of Carpentry undertaken including:

Bespoke Carpentry & Joinery
Kitchen Installations

Doors, Partitions, Skirtings, Architraves, Shelving
Timber Floors renewed/repared, Laminate Floors fitted

Timber Windows repaired including 'Sliding Sash'

Plus General Property Maintenance:

Including Painting/Tiling and much more!

Fully insured
(Including Public & Product Liability)

07397 153792 trystanphillips carpentry@gmail.com **01579 363150**



GENERAL GARDEN & HOUSE MAINTENANCE

NO JOB TOO SMALL

Call to discuss your requirements.
NO OBLIGATION quotes given.

One off jobs or regular work catered for.

Here are some examples...

OUTSIDE



**MOWING
HEDGE CUTTING
FENCE PAINTING
BOARDER WEEDING
PATIOS & DRIVES
CLEANED**

INSIDE




**WINDOWS CLEANED
INSIDE & OUT.
PAINTING
CLEANING
SHOPPING
IRONING**

CALL ANDREW CARLIN

now on:

07407 323888

Thank you.





THE HOME OF WOOD

BULK DISCOUNTS AVAILABLE ON OUR 30 YEAR SERVICE LIFE POSTS



OUR GOLD TREATED STAKES AND POSTS ARE THE ONLY ONES AVAILABLE IN THE UK THAT ARE APPROVED BY THE WPA BENCHMARK FOR 30 YEAR SERVICE LIFE

For more information please contact one of our team



Bond Timber, Bake Sawmill, Trerulefoot, Saltash, Cornwall,
PL12 5BW
01503 240 308 stacy@whbond.co.uk



Right-on Plumbing & Maintenance



Gareth Haimes

Tel: 07947353682



Domestic Electrical
Property Maintenance
Interior & Exterior Work
Carpentry :: Decking
Kitchens :: Bathrooms
Wall & Floor Tiling
General Plumbing

MCCARTHY PROPERTY MAINTENANCE

Electrical Safety
Register incorporating
ELECTSA  ECA Electrical Contractors Association Ltd

HIGHLY REGARDED LOCAL BUILDER
COMPETITIVELY PRICED
COVERING THE SOUTH WEST

Contact Dominic

07968 599 675
01579 362 945

info@mccarthypropertymaintenance.co.uk

www.mccarthypropertymaintenance.co.uk

Heel 2 Toe Footcare

Tired Aching feet.

Corns, Hard skin, Verruca.

Fungal infected toe nails, or toe nails
require cutting.

Diabetic feet also treated and
regularly checked.

I can help to keep your feet looking
and feeling good.

I am a trained Foot Health Practitioner
to Diploma Level, fully insured & DBS
checked.

I can do home visits via an
appointment.

**Call Penny: 07746 926146 for
further information.**



Local Accountant offering fixed fee accounting services

With over 25 years experience, I am a fully qualified, friendly, local accountant

- ✓ Annual Accounts for Sole Traders and Partnerships
- ✓ Book Keeping & Payroll
- ✓ Personal Tax Planning
- ✓ Company Accounts
- ✓ Business Support & Advice

- ✓ Self Assessment tax returns
- ✓ iXBRL tax filing
- ✓ Tax investigation Fees Insurance
- ✓ Company Secretarial work
- ✓ Tax calculations for Sole Traders and Partnerships

Kate Vaughnley FCCA - Chartered Certified Accountant

Website : www.kvaccountingsolutions.co.uk or Email : katevaughnley@gmail.com

Telephone : 01579 532622 / 07725 004152

Matt's Windows

Repair of Windows, Doors & Glass Unit Replacement

Making draughty windows great again!

T: 01579 641228

M: 07533 387368



yes
you
can

with
Slimming
World

Millennium House

Friday 5:30pm

Saturday 8am & 9:30am

Hayley 07966370233

slimmingworld.co.uk 

SEASONED LOGS



Telephone Jonathan
Mobile 07966 070725
or
01579 363157



Charlotte Louise Nails
Liskeard

Check out my social media
for the latest promotions
and inspiration

07 435 706 183

charlottelouisenails@hotmail.com



@charlotte.louise.nails



@Charlotte Louise Nails

10% discount when using
code NLP10
Book Now using this QR code



NICOLA GREENE

BSc (hons) Podiatry MChs

HPC Registered Chiropodist/Podiatrist

**Home Visit Practice treating all
your foot care needs:**

- Nail Cutting
- Corns and Calluses
- Thickened Nails
- Dry Cracked Skin
- Verrucae
- Foot Pain
- Diabetic Foot Assessments
- Wound Care

T: 01579 590027

M: 07786164205

E: nicki_greene@yahoo.com



Fencing
Paths & Steps
Turf & Astro turf
Driveways
Retaining walls
Digger work
Footings & foundations

Patios
Rendering
Decking

And more

Free no obligation quotes

**Call Rob on:
07518246666 or
01579 641802**

Debbie Hicks - Counselling and Psychotherapy

Caring, confidential counselling for all.

I work in a therapeutic relationship to help you understand yourself better.

I offer a warm, approachable, relaxed environment for you to untangle your thoughts and emotions.

www.debbiehickscounselling.co.uk

Email: debbiehicks10@gmail.com

07851 133782

More info on my
website or by
contacting me.



Window Cleaner
Window Cleaner

Also any upvc cleaned

i.e. fascias, gutters, etc.

gutters cleared & unblocked

Please phone Rob

07709 053464

Window Cleaner
Window Cleaner

Logan's Logs **FLO GAS**

Kiln Dried Firewood
Kindling & Firelighters
Eco Heatlogs
LPG Bottled Gas
Patio, BBQ & Camping Gas
Coal & Smokeless Fuel




0800 8021 223

sales@loganslogs.co.uk

www.loganslogs.co.uk

PensilvaCars

01579 363516

- ✓ MOTs Class 4
- ✓ Service
- ✓ Repair
- ✓ Tyres
- ✓ FREE Courtesy Car
- ✓ Car & Van Sales
- ✓ Diagnostics
- ✓ Air Conditioning
- ✓ 

We have offered a supply, fit & balance of tyre service for 10 years at competitive prices.

Most of our tyres can be supplied the same day.

LOCAL RECOVERY £45.00

www.pensilvacars.co.uk

pensilvacars@hotmail.co.uk

We can service and repair your car to manufacturer specification, keeping your dealer warranty without main dealer expense.





Pensilva & St Ive Post Office Service

Pensilva: Through the coffee shop on the 1st floor of Millennium House

Tuesdays: 9am to 1pm.

Wednesdays: 9am to 12 noon.

Fridays: 9am to 12 noon

**The Millennium House
coffee shop is also open on
these mornings.**

.....
St Ive: At St Ive Village Hall

Wednesdays: 10:30 to 11:30am

**Coincides with the St Ive
Village Hall Coffee Morning**

Pensilva Stores

Amazing Value

Premier
a great deal more from your local store
Mon-Sat. 7:00 AM. - 9:30 PM.
Sunday 8.00 AM. - 9:30 PM.

- ✓ Fantastic Special Offers every month!!! (See store leaflets)
- ✓ Come and Check out our great deals on Wine, Beer and Spirits
- ✓ Local Produce: Homemade Butter and Clotted Cream, Meat from our local butcher
- ✓ Cornish Fresh Fruit and Vegetables
- ✓ Fresh Bread, Pasties and Cakes
- ✓ Take Away Coffee, tea and hot chocolate
- ✓ Newspapers and Magazines, Greeting Cards
- ✓ Paypoint, Lottery

*** Free to use ATM ***
*** Card Payment ***

Friendly Staff + Service with a Smile !!!

Pensilva Stores is a family run business who have been serving local people and visitors for more than 21 years.

Higher Road, Pensilva, Liskeard, Cornwall PL14 5NQ

Tel: 01579 362547