

# THE PARISH PUMP



July 2023. Edition

\*\*\*\*\*500\*\*\*\*\*



**The Newsletter for the Parish of St Ives**

## THE PARISH PUMP



February 2014  
Edition 387



**The Newsletter for the Parish of St Ives**



## Disclaimer

The articles appearing in this magazine do not necessarily reflect the views of the Parish Council nor of the Parish Pump Editor.

## Parish Councillors Telephone List

Alan Moss (chair)	01579 362064	Marlene Carr (vice-chair)	01579 362919
James Bruce	07411 192645	Martin Corney	01579 382450
Rosemary Farley	01579 384810	Nigel Gisby	01579 363096
Tony Hodson	07973 536964	Nigel Libby	07968 891814
Paul Mann	01579 363757	Patricia Steer	01579 363096
Ivor Vaughan	07979 934604	Craig Vaughnley	01579 364083
Sharon Daw (Cornwall Councillor) 07837 379305 slash.dash.daw@gmail.com			

## Meetings of St Ive Parish Council

Meetings are now being held on the 2nd Monday of the month except August and December when no meetings are held. Please see the Parish Council website for meeting dates, agendas and minutes.

<http://st-ive-parishcouncil.gov.uk/minutes-agendas/>



Devon & Cornwall Police  
Building safer communities together

 **101**

Minicom 18001 101

## Police Community Neighbourhood Office

Your Community Support Officer is PCSO Steve Edser 30173.

email: CIOSNBMLLST@devonandcornwall.pnn.police.uk

To report a crime call 101 or go to [www.devon-cornwall.police.uk](http://www.devon-cornwall.police.uk)

In an emergency call 999

## Contact details for St. Ive Parish Council and for Millennium House

Address for correspondence: Millennium House, Century Square, Pensilva PL14 5NF

General Parish matters should be raised initially with the Parish Clerk, Jenny Hoskin, who will present them to the Parish Council.

Telephone: 01579 363096, email: [stiveparish@btconnect.com](mailto:stiveparish@btconnect.com)

For accounts matters for the Parish and for Millennium House contact John Body, Finance Officer: 01579 362102, email: [millenniumhouseadmin@btconnect.com](mailto:millenniumhouseadmin@btconnect.com)

Millennium House enquiries and reservations: 01579 363096

email: [millenniumhouse@btconnect.com](mailto:millenniumhouse@btconnect.com).

On the web: Millennium House Website: [www.cornwallvenue.com](http://www.cornwallvenue.com)

Parish website: [st-ive-parishcouncil.gov.uk](http://st-ive-parishcouncil.gov.uk) Facebook: [facebook.com/stiveparishcouncil](https://facebook.com/stiveparishcouncil)

## PARISH PUMP ADVERTISING COSTS

The prices for advertising in the Parish Pump are as follows:

The below prices include VAT at 20%:

**Quarter page: £10:00 per month or £100:00 for 12 months.**

**Half Page: £20:00 per month or £200:00 for 12 months.**

**Full Page: £33:00 per month or £330:00 for 12 months.**

## Parish Pump Information and Contact Details

To contact the editor please email: [parishpump@btconnect.com](mailto:parishpump@btconnect.com)  
or phone the Parish office: **01579 363096**.

Hardcopy submissions by post or by hand to the Parish office, Millennium House, or Millennium House reception.

Softcopy submissions: By email to the editor in MS Word, MS Publisher, pdf, Tiff or jpeg. Please use A4 pages and minimum 16 point font as the Pump is initially produced in A4 size and reduced to an A5 booklet at the printing stage. If in doubt please contact the editor.

Bargain Corner free ads by email to the editor or drop off at the Parish Office.

Deadline for the Parish Pump is STRICTLY 15th of every month

## **Chairman's Report July 2023**

I'd like to thank Joe for his nine and a half years of editing the Parish Pump. His attention to detail has made it the magazine it is today, with stories and messages from all areas of the community. There is a position open for a new editor and the possibility of remuneration depending on the experience of the applicant. I'm sure Joe would help with the transition.

Someone else who will be leaving us at the end of June is Brenda Bolton, who'll be retiring. You'll probably know her better as 'Brenda in the post office'. Brenda has become a part of this community although she doesn't live here. I'd like to thank her for her service to our community and I hope she will come back and visit sometimes. The post office days will remain the same.

Please check out 'what's on at the MEL' in this pump.

Alan Moss

## **Parish Council (Pensilva Ward)**

**A vacancy exists on the Parish Council, Pensilva Ward,** following the resignation of Cllr. Sandra Doe.

Please see notice boards for further information.

If you are interested in giving up some volunteer time and becoming a parish councillor, please contact the parish clerk for details.

Jenny Hoskin

Clerk

St Ive Parish Council

Email: [stiveparish@btconnect.com](mailto:stiveparish@btconnect.com)

## From the Editor

Welcome to this, the 500th edition of the Parish Pump!!! I hope you enjoy it.

The time has come for my final sign-off as editor of your newsletter. It has been a privilege and a pleasure to have been involved with it Here's why...

Not long ago, a gentleman who writes for the Cornish Times, and is an occasional contributor here, said in an email to me: "I think your Parish Pump is way above any other newsletter." That made me proud, for myself, a bit, of course, but especially for our community, because (at the risk of disagreeing with Alan's item opposite) it's not the editor that makes the publication, it's the contributors. And what a wonderful set of contributors we have here in our Parish! I want to thank everyone of you, past and present, for making it easy for editors, past and present, to put together a half-decent publication.

Sincere thanks also to everybody else involved in the monthly task of bringing the Parish Pump to you. That includes the Production Team in Truro (unfailing patience, professionalism and preparedness to pull out all the stops when required) and our wonderful team of distributors, including Pensilva Stores, who ensure that 1000 copies a month find their way into your hands.

For my final cover, I have reproduced my first cover, from February 2014. At that time, the Parish was in a turmoil over what to do about Millennium House. Every month seemed to produce a new drama on the Parish Council: regular rows and resignations and intransigence everywhere you looked. I became involved in trying to give the community a say in what went on, first through the Millennium House Forum, then through Pensilva Community Association, and finally through the Platform for Change initiative. While the first two were not a conspicuous success, the third (which arose from an idea of the late Ruth Wilson) did ultimately lead to a Council which has managed to bring sense and stability to our local decision-making. In my opinion, our communities are much the better as a consequence.

But that work is never done! And that is why I felt that my final message here should be the same as the first: "**Let's work together!**" It's not easy! Often it feels that the hardest thing in the World is to find common ground with someone with whom you profoundly disagree. But you have to persevere, because the alternatives never end well for anybody. If we can't find ways to work together with our friends and neighbours at the local level, what chance is there that we will ever find solutions to any of the really big problems (not to say crises) that face us on the national, regional and global stages?

That's it! Keep well, keep smiling and, one last time, thank you all.

Joe

**COMMUNITY COFFEE SHOP  
MILLENNIUM HOUSE PENSILVA  
COMMUNITY COFFEE SHOP  
MILLENNIUM HOUSE, PENSILVA**

**We are open Tuesdays, Wednesdays and Fridays  
9.a.m. to 1.p.m. (to coincide with the Post Office).**

**We, the volunteers, opened the Coffee Shop in 2017 with the hope of giving something back to the community. The atmosphere is relaxed, making it an ideal place to enjoy meeting up with friends for a cuppa and a chat. A warm welcome is assured.**

**We would like to say a huge 'Thank You' for your continued support.**

**Opening times for the Mel Bar at Millennium House**

<b>Monday</b>	<b>Closed</b>		
<b>Tuesday</b>	<b>5-11 pm</b>	<b>Wednesday</b>	<b>5-11 pm</b>
<b>Thursday</b>	<b>5-11 pm</b>	<b>Friday</b>	<b>5-11 pm</b>
<b>Saturday</b>	<b>5-11 pm</b>	<b>Sunday</b>	<b>12 pm -5 pm</b>

Please note: under 18s are welcome in the bar, with an accompanying adult, until 9pm.

Dogs Welcome

## From the Millennium House manager.

**Hi Parish Pump Readers.** We have had such wonderful sunshine throughout June, I hope you were all able to enjoy some of it!

I would like to thank Joe who edits the Parish Pump for all the time and effort he has put into editing the pump. I hope he enjoys all the free time he will have on his hands! I would also like to thank him for preparing the questions for our quiz night! It was well attended and I am happy to announce we raised £76 from the raffle tickets which is all going towards Blood Bikes. So thank you to all who attended and for the money raised, it was a brilliant evening had by all! If anyone is interested in helping us with future quiz nights, please let me know. We are looking for someone who can write out the quiz questions and/or be the quiz master!

Speaking of brilliant evenings, we will have a Barn Dance held here on Thursday 3rd August 2023 from 6pm to 10pm. Presented and produced by Theatre Royal Plymouth, featuring Freedom Fields Ceilidh Band and we are one of the fortunate venues to be selected! You can purchase tickets online, or if you would prefer, I will have a limited number of tickets at Millennium House. I'm sure you will have seen the flyer along with your Parish Pump, it will be a great night had by all! Get your tickets in advance rather than on the door.

This coming month we have the following for you!

Saturday 8th July - Lego Club - 9.30am to 11.30am

Wednesday 19th July - Bingo - 7pm

Thursday 20th July - Film Club - 7pm

Friday 21st July - Film Club - 7pm

Sunday 23rd July - Table top sale - 11am to 2pm

Saturday 29th July - Kiribati Independence Celebration

Sunday 30th July - Antiques Fair - 9am to 3pm

Don't forget we also have Yoga every Monday at 5.30pm with Laura and every Wednesday at 6.30pm with Alexis!

Mims exercise session every Monday from 10.30am to 12pm.

Badminton every Monday and Tuesday evening from 7.30 to 9.30pm with Nigel.

Ladies Walking Netball every Thursday from 4pm to 5pm with Rosemary.

Aikido every Thursday evening from 7.30pm with Ron.

Youth Club every Friday evening from 5pm to 7pm for 11-19 year olds, with Sam.

Slimming World is still every Friday evening at 5.30pm and every Saturday morning at 8am and 9.30am, with Hayley.

I am currently arranging dance classes for children and grown ups too, keep your eye out for September and I should hopefully have some good news for you all!

If there is a club or group you would like us to hold here at Millennium House, please let me know and I can see what can be done! Call on 01579363096 or email [ness.mhouse@gmail.com](mailto:ness.mhouse@gmail.com)

Have a jolly July - Vanessa



## A response to last month's letter to the editor: "A good walk spoiled!"

I often take my dogs to Pentiddy Woods and I have to say how grateful I am to have such a lovely place to visit, but I have also had two of my walks spoiled by uncontrolled dogs. The offending dogs not only continuously jumped at me but also harassed one of my dogs.

No apologies were forthcoming, in fact, when asked to control the dogs, the response was offensive to say the least. It is such a pity that there always "has to be one". I shall continue to enjoy Pentiddy Woods and walk my dogs with the hope of not encountering such uncontrolled dogs.

## **RVS Wednesday Club, Pensilva**

**Meetings are held every 3<sup>rd</sup> Wednesday of the month (not August) from 1 to 3.p.m. at Pensilva Village Hall. Entry fee £2 which includes light refreshment and Raffle. At our next meeting on the 19<sup>th</sup> July we will have a representative from "HEARING DOGS" which should prove to be very interesting. New members are very welcome. For further information, please contact:**

**Cherry Woodhouse (Chairperson) 01579 363674**

**Marlene Carr (Secretary) 01579 362919**

## **MELODI LISKERRET**

- A mixed group, singing a variety of well known numbers including Folk & Cornish songs.
- Local to you!
- Weekly rehearsals in St. Ive – Gorfenna, PL14 3LX
- Friendly informal rehearsals with a tea break and biscuits!!
- **Free one-to-one professional singing tuition within a few weeks of joining!!**

**For more information, please contact Gerald, secretary, on 01579 363881 or email: [charaton@btinternet.com](mailto:charaton@btinternet.com)**



**PENSILVA  
MILLENNIUM  
HOUSE**

# **UPCOMING EVENTS**

**JULY 23**

**TABLETOP SALE**

11AM-2PM. £5 PER TABLE

**AUG 19**

**MIND YOUR MANNERS**

ROCK/METAL COVERS BAND

**SEPT 30**

**BARN DANCE**

FEATURING DARTMOOR PIXIES

**OCT 31**

**HALLOWEEN PARTY**

DISCO AND PRIZES FOR BEST COSTUME

**NOV 25**

**POLPERRO FISHERMANS  
CHOIR**

FURTHER INFORMATION WILL BE AVAILABLE CLOSER TO THE TIME OF THE  
EVENT - KEEP AN EYE OUT FOR POSTERS AND IN THE PARISH PUMP

# St. Ive Village Hall PL14 3LZ

## HALL HIRE - £5 an hour

Includes the use of kitchen and electric  
(except wall heaters which are on a coin meter).

For bookings ring Beth: 01579 382066 or 07476 156659

## Regular Group and Activity Timetable

Gardening Club	1st Monday monthly 7:30pm	01579 382762
St Ive Snooker Club	Mondays & Thursdays 7:00pm	01579 382315 R Bunkum
Mobile Post Office	Wednesday 10:30 - 11:30 am	
Coffee Morning	Wednesday 10:30 - noon	
Parent and Baby drop in	Thursdays (term time only) 10am to midday	Beth: 01579 382066 or Amanda: 07703 393070
Methodist Church Sunday Service	Check timetable in Parish Pump for services	Kathryn or Keith Mutton 01579 382334

## St Ive Village Hall. Programme

### St. Ive Village Horticultural Show. Fri/Sat 1st/2nd Sept.

Cups & Rosettes. 50p per entry. Free for children. Refreshments and raffle. See details & schedule.

### Spooky Hall Family overnight camp-in. Saturday 21st Oct.

Games, children's bingo, supper, hot chocolate and breakfast included. Children must be accompanied by a parent. 8pm to 8am. £5 per person.

### Christmas Wreath Making. Saturday 25th Nov.

Was very popular last year. Bookings taken. Refreshments included. £20.

### Supper with Santa. Saturday 2nd December 3pm to 5pm.

Santa stops for tea, reads a story to the children and answers questions. Individual time for photos and a selection box from Santa.

Very popular, so there will be limited spaces. Date yet to be confirmed).

To book places or for more info, call Beth:  
01579 382066 or (mobile) 07476 156659

All at St Ive Village Hall, The Cross,  
St Ive, PL14 3LZ

Monday and Thursday  
evenings at 7pm



Contact Ray Bunkum  
01579 382315



1st Monday of the month

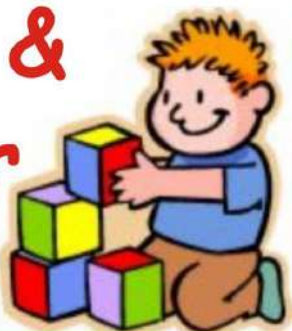
7.30pm

New members welcome

**CHANGE OF DAY.**

NOW THURSDAY MORNINGS  
FROM THE 1<sup>ST</sup> WEEK IN JUNE.

**Parent &  
Toddler  
Group**



Running weekly (Term time Only)  
10am to 12midday.

Tea, biscuits and company.

Make new friends

Cost £3.00 per adult

**Wednesday mornings**

**POST  
OFFICE**

® Travelling post  
office

10:30 - 11:30 am

Coffee Morning

10:30am - midday



**Sundays**

Methodist Sunday Service

Check chapel notice for details.

## Pensilva Film Club

In response to requests for a “more cheery film next time please” tonight’s movie, *The Love Punch*, (from which I have just returned) proved to be 1.5 hours of pure amusement and escapism giving rise to much laughter from our lovely audience. Lacking, for sure, the “depth” of our last two films, it more than fitted the bill of providing an evening of enjoyable light entertainment, and most left with a smile on their face. We are very much a community cinema club, and welcome feedback as well as requests/recommendations for films our members would like to see. It is our broad aim to appeal to as many as possible by offering different genres of films whenever possible. Some movies are not covered by the C-fylm licence, and we are, therefore, unable to show those, unfortunately.



Our next club evening is to be July 21st when we will be showing *Allelujah*. This stars, amongst others, David Bradley, Judi Dench, Derek Jacobi and Jennifer Saunders and follows the all-too familiar, these days, story of threatened closure of the geriatric ward in a small Yorkshire hospital. The local community decide to fight back by inviting a news crew to cover their story.

It’s lovely and very encouraging to see film club member numbers grow and we look forward to seeing you next month. As usual, £3 for members and £6 for those wishing to join or renew membership on the night. Cash only please. The Mel Bar will be open before and after the showing.

For any enquiries please contact Judy, 01579 208836 or [judy.two@outlook.com](mailto:judy.two@outlook.com)

**Pensilva Film Club – in association with C-fylm, part of Creative Kernow**



# STRAWBERRY TEA



Donations in support of church work in our community

Friday 7th July  
St John's Church  
Pensilva  
3.00 pm

## Teatime Church



For children and their families  
**Playing Games**  
**Singing and Praying Together**  
**Sharing a Bible Story**

Sunday 2<sup>nd</sup> July 3.45pm  
St Cleer Parish Church

## Eating Tea

For more information  
contact: Rev Li Selman  
[revliselman@icloud.com](mailto:revliselman@icloud.com)

Sunday 16<sup>th</sup> July 3.45pm  
St John's Church Pensilva





# Liskeard Show

## Sat 8th July

The Showground, Merrymeet from 9am



PL14 3LE

[www.liskeardshow.org](http://www.liskeardshow.org)

**Cattle, Sheep, Horses, Dog Show, Over 140 trade stands, Cornish Food & Drink, Craft & Community and Small Business Marquees, Main Ring Entertainment, Countryside Area, Live Music, Farming Discovery Area, Classic Cars, Bubble Football, Children's Pop Up Play Village, Fun Fair, Bouncy Castle and Public Bar**

**Adults £12, Children (5-15yrs) £4 , Under 5's Free, Family (2+2) £28**



**Free Car Parking, Free Bus from Liskeard  
Dogs welcome on retractable leads**



**Email; [info@liskeardshow.org](mailto:info@liskeardshow.org) Tel: 07894 456 099**

Photo courtesy of Jon Harris Photography. Registered charity No. 1170999



# St John's Church Pensilva Good Grief Cafe



Wednesday 19<sup>th</sup> July  
3.00 to 5.00 pm

We can grieve for many reasons:  
the death of a friend or relative;  
the diagnosis of a friend or relative  
with dementia or a terminal illness;  
loss of mobility or driving licence;  
closure of your place of worship;  
closure of a support group;  
the loss or illness of a pet;  
the loss of freedom;  
the loss of a job;  
homelessness;  
the loss of stability in society.  
The Good Grief Cafe is for anyone  
who is grieving for any reason.  
Come for company, for friendship.  
Eat cake, drink tea and coffee.  
Chat if you want to,  
or just be there.  
Everyone is welcome.

For further information  
contact Geoff 01579 362698



FOOD for  
THOUGHT



SUNDAY

23<sup>rd</sup>

July

5.00 PM

St John's Church  
Pensilva

A time of fellowship  
and informal worship  
with a shared afternoon tea



For further information  
& to arrange transport:  
Geoff 01579 362698



---

# TABLETOP

Sale



# SUNDAY 23RD JULY 11AM - 2PM

---

## MILLENNIUM HOUSE, PENSILVA

Refreshments available. Contact Vanessa to book in  
your table on 01579363096 or email  
[ness.mhouse@gmail.com](mailto:ness.mhouse@gmail.com)  
4ft tables are £5 or 6ft tables are £8.



**Tuesday  
25<sup>th</sup>  
July**

**St John's  
Church  
Pensilva  
on the  
last Tuesday  
of the month**

**2.00  
to  
4.00 pm**

**Contact Kathleen  
01579 363686**

**Pensilva**



**MemoryCafé**

**Thursday 27<sup>th</sup> July**

**2.00 to 4.00 pm**

If you have  
memory problems  
or  
you are a carer  
for somebody  
who does  
and  
would like to  
meet others  
who understand  
your situation  
then join us at  
St John's Church  
Pensilva

**Contact Geoff 01579 362698**



# St Ive Parish Church



## Afternoon cream tea

Sunday 6<sup>th</sup> August

Come along from 2:00pm

Join us for an afternoon of delicious homemade scones with jam & cream & a cup of tea (or coffee, or water or juice)



All proceeds for Church funds



# An evening with...

**JOHNNY  
COWLING**

Supporting  
children's hospice  
**SOUTH WEST**



Registered Charity No. 1003314



**ELIOT HOUSE, LISKEARD**

**FRIDAY 29TH SEPTEMBER 2023**

**AT 7.30PM**

**TICKET ONLY EVENT**

**£15.00 Including Pasty Supper**

**Contact Pat**

**On—01579 362959 or**

**07436438567**



## 13+ YEARS OF WILDLIFE WATCHING IN THE PARISH OF ST IVE.

Since moving to the Parish at the end of 2009, I have been photographing and recording the wildlife which I see at my home on the edge of Pensilva on a daily basis. This month I will tell you a bit about an erratic but fairly frequent visitor to my bird feeders...

### ...THE GOLDFINCH

As you can see from the photo, goldfinches are distinctively marked birds, with red faces, gold patches on their wings and distinctive wing and tail feathers which are black with white spots. (go to the on-line pump for a coloured version)

They are sociable birds, often feeding and breeding in groups. They are largely seed eaters and have beaks adapted to enable them to access seeds from thistles and teasels. I also

frequently see them feeding on gorse seeds in an area of scrub outside the garden. They may also take insects in the summer. They come to our feeders often, being seen frequently for a while before moving on for a bit. This visitor's pose gives a good view of the black and white wing and tail feathers.



Goldfinches will look for thick cover, usually several metres above ground, in which to build their nests. The nests are made from grasses, moss, roots and lichens interwoven with wool and hair. I have also seen them collecting fine feathers during the nest making season as can be seen in the photo on the facing page.



The nests are neatly made, with a particularly deep cup in relation to width, in which to lay their eggs. Usually they lay about 5 eggs in June, and the young hatch about two weeks later. They will remain in the nest for two more weeks before fledging. During this time, the parents feed them on insects to promote quick growth. The young are initially duller than their parents. Goldfinches can

go on to have several broods, depending on the weather conditions and the availability of food.

Although we have goldfinches all year round, some do migrate to mainland Europe in winter, some heading as far as Spain. They use a wide range of habitats, but are less common in the uplands. They are more common farther south - so we are well placed to see them.

Historically, goldfinches were commonly kept as caged song birds. Widespread persecution until the 1930s would have limited their numbers and the ending of such practices almost certainly helps to explain the rise in their population since then.

A few years ago during an open studios event, we came across an artist painting a chapel wall in Gunnislake and noticed that he had included several goldfinches in the religious scene he was working on. He explained that they have historically been included in Christian imagery as a symbol of Christ's passion. This may also explain the collective noun for a group of goldfinches, which is a 'charm'.

Goldfinches are categorised as green (not endangered) in the list of endangered species. However, they are considered to be vulnerable to any future loss of habitat, particularly scrub, heathland, trees and woodland.

If you want to see goldfinches, I understand that they are particularly partial to niger seeds. These are not on the menu here, but perhaps that is why they are not more regular attenders!

HAPPY WILDLIFE WATCHING - Hilary

CONGRATULATIONS TO 'THE PUMP' ON ITS 500th EDITION!

Thank you to Joe for your much appreciated help and support in my time writing these wildlife articles . Your editorial skills will be missed.



*The vision is for a small, abundant farm and gathering space that has the health and well-being of the local community, the land and its wildlife at the heart. A place where we will connect, learn and work together to discover what it is we each have to offer to help build a better, fairer world for generations to come.*

### **What have we been up to?**

Most of what we've been doing recently has been behind the scenes.

- Preparing for the community share offer so that Tregovenek can become fully community owned. This involves a significant amount of work producing a business plan and financial model but we hope to have it ready by the end of the year.
- Preparing the bungalow for rental: re-wiring, decorating, rental documents, etc
- 12 more people have completed introduction to sociocracy training; learning new and effective ways of forming proposals, making decisions and working together.
- Ecological surveying of the hedges and meadow.
- Dismantling and moving to the farm a large polytunnel donated by a local school.
- Presentation of the first iteration of the farm design (April).
- Policy writing galore!
- Visiting Fordhall Farm in Shropshire – England's first community-owned farm. One of our mentors, from Fordhall, Charlotte, is helping us to put the share offer together. It was an incredibly inspiring and helpful visit ([www.fordhallfarm.com](http://www.fordhallfarm.com)).

Community garden tidying : garden beds have been adopted by local people who wanted a bit more growing space. Compost bins have been made, paths cleared and bushes pruned.

### **What's coming up?**

Tours: Sat 5th and Sun 27th August 3-5pm. A chance to look around Tregovenek and the off-grid straw house, gardens and woods at Pentiddy Woods next door. To book your free place contact [ele@tregovenek.org.uk](mailto:ele@tregovenek.org.uk). Donations for Tregovenek will be very welcome. The next 2 **work parties** are on July 8th and August 4th (10am – 1pm, including shared lunch). All welcome to join in.

**Details of all our events are on the newsletter which you can read on the website or subscribe via the website to make sure you hear the news first!**

### **What do we need help with?**

Tregovenek needs you! This is the beginning of a wonderful adventure and to create the vision a whole lot of wisdom, energy and enthusiasm is required. We work in circles, small groups of people working on specific aspects of the project, many of which could do with some additional support.

Right now, we are looking for people to fill some specific roles, described on the next page:



**Finance person extraordinaire.** We need help with: financial reporting, fundraising, managing day-to-day accounts and financial modelling in preparation for our community share offer. We have legal obligations to meet as a Community Benefit Society (such as producing our annual report) and we are currently developing simple policies to help the project get off the ground. Experience in accountancy for non-profits, funding applications and the accounting software Xero would be wonderful, or at least the willingness to spend time getting your head around it all!

You will become part of the Finance Working Circle (currently 3 people), who generally meet every 2-4 weeks. Our financial end of year is 31 March. This is initially an unpaid position, with the potential for a paid position if you can help source appropriate funding!

**Social media/communications/storytelling.** Our Community Engagement Working Circle is a bit thin on the ground. We really need someone who can raise awareness and encourage participation through social media. We currently have an Instagram and a Facebook account. It's important to tell the story, to document and record what is happening at Tregovenek as it progresses – for funding applications, for the community share offer, to get people involved, to be replicated elsewhere and so much more. So if social media is easy for you, or you have experience in website design and copy writing, film making, marketing, communications or engagement, please get in touch.

You will become part of the Community Engagement Working Circle (currently 2 people who are wonderful at planning events and connecting with people but aren't friends with technology!). The circle generally meets monthly or as need requires. This is initially an unpaid position, with the potential for a paid position if funding can be sourced.



**We are also looking for people with skills in any of these areas:** general administration, health and safety policy writing, business planning, regenerative agriculture.

If any of these opportunities interest you, **please contact [jemma@tregovenek.org.uk](mailto:jemma@tregovenek.org.uk) or call 07582 450640 to arrange a conversation.** We'd love to hear from you!

We're also on the look-out for general gardening tools. If you have any in your shed that need a new home please get in touch.

This is such an amazing thing to have happening in Pensilva, and it's a lot of work. Thank you to all those who have found a way to show support to our incredible team of volunteers. There's something for everyone so please make contact to see how you could contribute.

**[www.tregovenek.org.uk](http://www.tregovenek.org.uk)   [mail@tregovenek.org.uk](mailto:mail@tregovenek.org.uk)**

## St Ive & District Gardening Club Report June 2023

On Monday 5<sup>th</sup> June we visited a private garden which is usually open for the National Garden Scheme. It belongs to Ginny & Giles at their home: Trethew, near Lanlivery.

In our usual convoy of cars we made our way down Cornish lanes. Turning onto a stoney track, we wound our way down, past a couple of fields, round bends, wondering if we were at the right place. Around the last corner we came to a stop & parked by a rather large shed covered in pretty pink roses. A gorgeous, trailing rose wound it's way around the wooden structure, matching the winding track we had just finished.

Ginny & her dog greeted us & led us down a path towards the house. On the way she explained the original area was land, a farm house & a mill. The house had been extremely derelict, but while it was owned by an architect; they completed a lot of work on it & on the surrounding land. Ginny & her husband Giles have lived there for 40 years. Ginny tends to the garden on her own (with the exception of an external gardener for a couple of hours fortnightly) and Giles cuts the grass. When they arrived there wasn't a garden, it was all fields. Their children enjoyed owning, riding & caring for ponies, then after the children left home Ginny had some animals: ducks, geese, sheep. Ginny then decided she wanted a garden so the work began. A familiar story about the start of a garden life, but little did we know what was around the corners.

We walked under an archway to see the most delightful, symmetrical, country house with a stone archway, front porch covered in delicate foliage, tiny pink flowers at the base & trailing deep red roses climbing up the wall to the roof. At the front of the house, a weed-free lawn outlined by an array of colour, shades of green, dark copper, pale pinks, purples, yellows, blues. Varying heights of trees, low level ground covering shrubs hugging the lawn. An old, lichen covered garden chair sitting comfortably enjoying the summer evening sun. Suddenly it felt like we were standing in a picture of a country garden for a puzzle.



We follow Ginny down 3 stone steps to the back of the house, turn the corner and the view can be seen; a never-ending view of a patchwork of fields, meeting the clear blue sky stretching into the distance. Standing on the gravel path, to the right an arch of pure white roses flowing like a wave over an open gateway, to the left, over the low hedge a neatly cut lawn with garden beds. The beds, blankets of green highlighted by white flowers providing a pop of bright colour. In the corner, a stylish, cushioned garden arbour looking out towards the beds & the setting sun through the trees.

*(Continued on facing page...)*

## **St Ive & District Gardening Club Report.** (Continued from previous page.)

At this point we all comment what a lovely English garden, a peaceful place with many different colours & plants to enjoy. However, this was nowhere near all there was to see!

Opening a gate Ginny leads us along a grass path surrounded by long grass & apple trees – a delightful orchard home to some hedgehogs too, Ginny tells us. The setting sun is perfectly placed, glowing through the apple trees. At the end of the path we are greeted by 2 white geese, that are deciding if we are going to be allowed to stay; they decide that we can, but not too close - a hiss or two gives us our instructions.

Beyond the orchard & goose home is a perfectly rectangular lawn, green, weed free. Loved by Ginny's dog, who shows us the best thing to do here...run, run & run! So, again, we all comment on what we have seen, what a wonderful job Ginny has done in creating the space. Ginny informs us the stone for the steps up the slope is local stone to ensure they were in keeping with the house & other garden features. Next to the lawn is a fence, we all assume it is a neighbour's land but no, what was over the fence was a feast for the senses!

Opening the gate, like opening the door to the secret garden. A wild undisturbed hedge & wall, foxgloves standing proud waiting for the bees to pay them attention, ferns uncurling to show off their leaves, wild grasses allowed to grow but not to encroach on the grass paths. Following the path past a rainbow of rhododendrons we arrive at a pond, but not just a pond, one which has a path around it, a bridge with an island, a rowing boat & a swing seat on one side. Water plants, irises a-plenty, living their best life. A charming & tranquil oasis encompassed in nature.

Walking back to house, words didn't seem enough to describe or praise; wow, amazing, delightful, magnificent...no one was able to use sentences, we were all stunned.

Just before we reached the house there was a little path going behind an outbuilding, following others we ventured along. In front of us was the most exquisite sight. A white, fully flowering wisteria, flowing down, engulfing the wooden arch it had climbed. Now, even the one word expressions were lost, just gasps & open mouths remained. This garden is a must visit, it is simply unbelievable.

**Next visit:** Mon 3<sup>rd</sup> July to Meaders Lavender Field, near Kelly Bray. Entry: £3 (including refreshments). Meet at St Ive Park car park to leave 7:00pm – PL14 3LZ. Car share: £2.

**We are a friendly bunch who would love to have new members. Feel free to come along to the visit with no obligation to join – we'd be pleased to welcome you.**



See the pictures in colour at <http://st-ive-parishcouncil.gov.uk/parish-pump/>



## **Pensilva W.I report of June meeting.**

**The inequality of Women through the ages.** Mike Hayward gave a fascinating talk and presentation on this subject.

Mike started his talk with this quote. "If you want to understand about today you must learn about yesterday." Pearl. M Buck (1892-1973) . Mike's talk certainly gave us a lot to think about. Who realised that women could not open a bank account in their own name before 1975 or have a mortgage or credit card without the signature of a male guarantor? A fascinating subject and made us all realise how far we have come, although we still do not always have equal pay for women. Lots of questions followed. Mike was warmly thanked by Verna.

### **Dates for our diaries.**

Visit to Deer Park Farm, Callington. Farming for the future. Organized by C.F.W.I.

The walking group have an afternoon walk to Tregarrick Tor.

Members can also look forward to Croquet on the lawn and picnic at Cotehele.

Chynoweth, our headquarters at Truro, have a 20th birthday cream tea.

Lots for members to look forward to.

We are also reminded the schedules for our Horticultural Show on Saturday 9th September are now available.

Just two birthday girls this month. Birthday posies and cards were presented to Alison Willis our secretary and new member Olive Davis.

Competition winners for this month: A poem about a female historical figure: 1st Jenny Rendle, 2nd Frances Tucker, 3rd Mary Yates.

Flower of the month: 1st Mary Yates, 2nd Liz Evans, 3rd Jenny Rendle.

The next meeting. Wednesday 12th July at 7.15pm, Millennium House when the speaker will be, "Mrs Marvellous" Joanna Shepherd. She will talk and demonstrate her craft work.

Competitions: Any hand-sewn item and flower of the month.

We look forward to welcoming visitors and new members.

**Recycling for Charity.**  
**Recycle your OLD reusable Water Bottles**



**and make money for our charities**



**[www.south-hill.co.uk/charity-recycling](http://www.south-hill.co.uk/charity-recycling)**

The Recycling project trailer will be by St Johns church  
on **MONDAY** July 10<sup>th</sup> at 12noon  
so you can drop off **all** our items.

## **200 CLUB** Draw Results for May 2023

**1st No. 100**  
**Mrs S. Wherley**

**2nd No. 126**  
**Mrs V. McCarthy**

**3rd No. 71**  
**Mr J. Blackler**

**Thank you**

# ST JOHN'S CHURCH, PENSILVA

A united congregation of the Church of England & the Methodist Church

## Services for July 2023

Sunday 2<sup>nd</sup> 11.00 am Rev Martin Sellix *Holy Communion*

Sunday 9<sup>th</sup> 11.00 am Mr Patrick Clark *Methodist Local Preacher*

Sunday 16<sup>th</sup> 11.00 am Mr Geoff Cox *Anglican Reader*

Sunday 23<sup>rd</sup> 11.00 am Rev Andy Day *Holy Communion*

5.00 pm Food for Thought

Sunday 30<sup>th</sup> *No service at St John's, please come to:*

10.30 am Cluster service at St Cleer Parish Church

**Thursdays** 10.00 am Morning Prayer Fellowship

**JULY EVENTS** Please see posters on other pages for full details

Friday 7<sup>th</sup> 3.00 pm Strawberry Tea

Sunday 16<sup>th</sup> 3.45 pm Tea Time Church for children & families

Wednesday 19<sup>th</sup> 3.00 - 5.00 pm Good Grief Café

Tuesday 25<sup>th</sup> 2.00 - 4.00 pm Stitch, Knit & Natter

Thursday 27<sup>th</sup> 2.00 - 4.00 pm Memory Café

Sunday 30<sup>th</sup> 6.00 pm Farewell service for Rev Andy & Sarah Day

*Liskeard Methodist Church*

*For further details of the services and events at St John's, or if you know of any illness or need in the village, please call Geoff, 362698 or Frances, 363718*

## **Unity Methodist Church St Ive with Bealbury and Blunts**

Meetings at St Ive Village Hall unless stated otherwise

### ***Services for July 2023***

<b>Sun 2<sup>nd</sup> July</b>	11:15 am	United Anglican Service at St Ive Parish Church
<b>Sun 9<sup>th</sup> July</b>	10:30am	United Methodist Service at St Ive Village Hall. Mrs Helen Burke.
<b>Sun 16<sup>th</sup> July</b>	11.15am	United Anglican Service at St Ive Parish Church
	6.00pm	United Greenshoots Service at Bealbury Methodist Church. Mr Mark Haydon.
<b>Sun 23<sup>rd</sup> July</b>	10.30am	United Methodist Service at St Ive Village Hall with Mr Julian Langston
<b>Sun 30<sup>th</sup> July</b>	10:30am	Methodist Service at St Ive Village Hall. Judith Allen

Thursday nights, once a fortnight at St Ive Village Hall 7:30pm, the Chattermakers craft group meets for a time of crafting and chatter (mainly the latter). All welcome. For more details please ring Kathryn on 01579 382334.



## **Liskeard Repair Café “If you can carry it, we’ll do our best to mend it!”**

We are a friendly group of volunteers, with repair skills in all kinds of fields. We come together once a month to help people by repairing clothes, furniture, electrical equipment and appliances, bicycles, crockery, toys, etc. You can sit with our repairers and learn new skills and get some expert advice, or you can spend time chatting with others whilst enjoying a free tea or coffee and cake.



We are part of a nationwide network of Repair Cafes aiming to create a more sustainable future by avoiding unnecessary disposal of items that can receive a new lease of life with a simple repair. Best of all, the Repair Café is a place for people to come together and see how much fun it is to repair things.

Repairs are free, but donations are gratefully received to cover costs.

Second Saturday of each month, at the Liskerrett Community Centre, Varley Lane, Liskeard, PL14 4AP. There is a some disabled parking at the Centre and plenty of other parking at the Cattle Market Car Park by the Centre.

Find out more on our FaceBook Page, just search for Liskeard Repair Café.

There is always room for more volunteer repairers: drop into one of our sessions, send us a message via our FaceBook Page or email [liskeardrepaircafe@outlook.com](mailto:liskeardrepaircafe@outlook.com)

**Upcoming Repair Cafés 2023: 1pm – 4pm on June 10th and July 8th.**



**Positive + Resilient + Together**

### **Thinking about car sharing?**

**Save money and reduce your carbon footprint, in one easy move.**

A local resident got in touch with us to tell us how combining with a “Buddi” to share car journeys had saved them both “an absolute fortune”. Initial contact was via the site Liftshare, <https://liftshare.com/uk>. There’s no obligation, just enter details of a journey, regular or infrequent, that you would be interested to share, and see what comes up. You can accept or decline a potential Buddi.

Simple things like this make us more resilient as a community and as a society. If you are interested in joining our group and helping to make our area a better place to live, in whatever way, big or small, please contact us via email [posicrp@gmail.com](mailto:posicrp@gmail.com) or phone 07768 130520. **Follow Us:** Intagram: togetherproject2022



# MILLENNIUM HOUSE



# YOGA FOR EVERYONE

At Millennium  
House,  
Pensilva.  
tel. 01579 363096

MONDAYS FROM **5:30pm** with Laura,  
And WEDNESDAYS from **6:30pm** with Alexis.  
**£7 per class. Must bring your own yoga mat.**



## Tamar Area Prostate Support (TAPS)

### DON'T IGNORE THE SIGNS

- A need to urinate frequently especially at night
- Difficulty in starting to pee
- Weak flow
- Feeling that your bladder has not emptied fully

**Come and join us on the first Tuesday of the Month  
10.00 at the Compton Park Engine House Callington  
for a friendly chat and a coffee.**



Paul Mansell 01822 832179 Harry Lawson 01579 383258 John Stewart 01822 833343  
Stephen Williams 07735 389883 Albert Doidge 01822 832471  
Or email [tapsinfo555@gmail.com](mailto:tapsinfo555@gmail.com)

# MILLENNIUM HOUSE

COMMUNITY CENTRE, AND DYNAMIC EVENT  
VENUE IN THE HEART OF EAST CORNWALL



#### Conferencing

We have four meeting rooms for all your corporate needs.



#### Function Room

For parties, discos, or just larger events; with adjoining kitchen and bar.

### Our Facilities

#### Sports Hall

For sports or larger events requiring a stage, the sports hall is our biggest venue.



#### Coffee Shop

Providing tea, coffee and cake. And for something stronger, there's the Mel, a licensed bar.



**Enquire today:**  
**01579 363096**

[www.millenniumhouse.org.uk](http://www.millenniumhouse.org.uk)  
PRINCESS ROAD, PENSILVA, PL14 5NF

## What Do We Do?

From wedding to wakes, kids or adults, corporate or community, we can host and cater your event. If you have an idea that's not covered here, get in touch and see if we're the right venue for you.

#### We're also home to:

- ✓ The Mel bar
- ✓ All Being Well Fitness Centre
- ✓ Post Office
- ✓ Sunflower Park kids playground
- ✓ Extensive playing fields
- ✓ Community Library



### **Millennium House Community Transport**

#### **Do you require transport to and from the doctor's or hospital?**

Our Parish has a number of volunteer drivers who have agreed to continue to help those who do not have transport, by using their own vehicles to help those in need.

Millennium House Community Transport's aim is to connect local communities and reduce social isolation.

If you would like to volunteer as a driver, or if you require transport to hospital, doctor's or vaccination, and have mobility issues, or are unable to drive to your appointment: **please contact Marlene on 01579 362919 or 07896 994947** and we will endeavour to help.

### **Badminton at Millennium House**

Come and join our relaxed and friendly group.

**Mon & Tue 7:30 - 9:30pm**

For further info phone Nigel or Carol on 01579 363594 or 07885 798370



## **PENSILVA VILLAGE HALL**

**We are now open and back in business!**

Anyone wishing to book the hall for meetings, birthday parties or fundraisers, please contact Peter or Jackie Browning on **01579 363212** or email **[peterpensilva@gmail.com](mailto:peterpensilva@gmail.com)**



Please note that as well as hall rent there is a coin meter for heating at 60p/hr.

## **MOBILE LIBRARY**



**The County Mobile Library** visits our area every four weeks, always on a Friday. You can now browse the shelves again, but you can still pre-order books if you prefer.

Next visits: 28th July, 25th August.

Stops at The Victoria Inn, Pensilva from 10.25 to 10.45am; and Quethiock bus stop from 11.00 to 11.25am.



## **Struggling with Sight Loss?**

iSight Cornwall offers practical help to people living with sight loss in Cornwall including:

Low Vision: Advice for low vision aids

Assistive Technology: Advice on products

Benefits Advice: Assistance to claim entitlements

Equipment Demonstration: Advice on gadgets

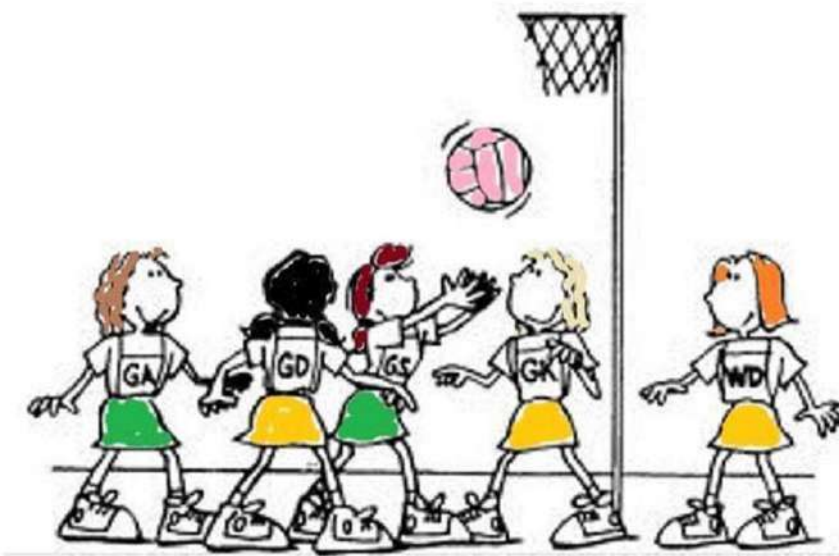
Social Clubs & Activities: Links to clubs & activities in the county

For more details Telephone 01872 261110 or visit

[www.isightcornwall.org.uk](http://www.isightcornwall.org.uk)

**Ever tried...**  
**Ladies Walking Netball?**

**Come along to Millennium House, Pensilva**



**Thursdays**  
**4.00pm - 5.00pm**

**£2 per session**

**For further info contact [rosemaryfarley@gmail.com](mailto:rosemaryfarley@gmail.com)  
or Tel. No. 01579 384810**

***All Being Well***

**We are still open for three mornings a week. A maximum of six members can now attend at one time.**

**Opening hours:**

Monday, Wednesday and Saturday, 9am to 1pm.

Maximum six members at a time for each of three slots within each session: 9:00 to 10:20, 10:20 to 11:40 and 11:40 to 13:00

**Prior booking is essential**

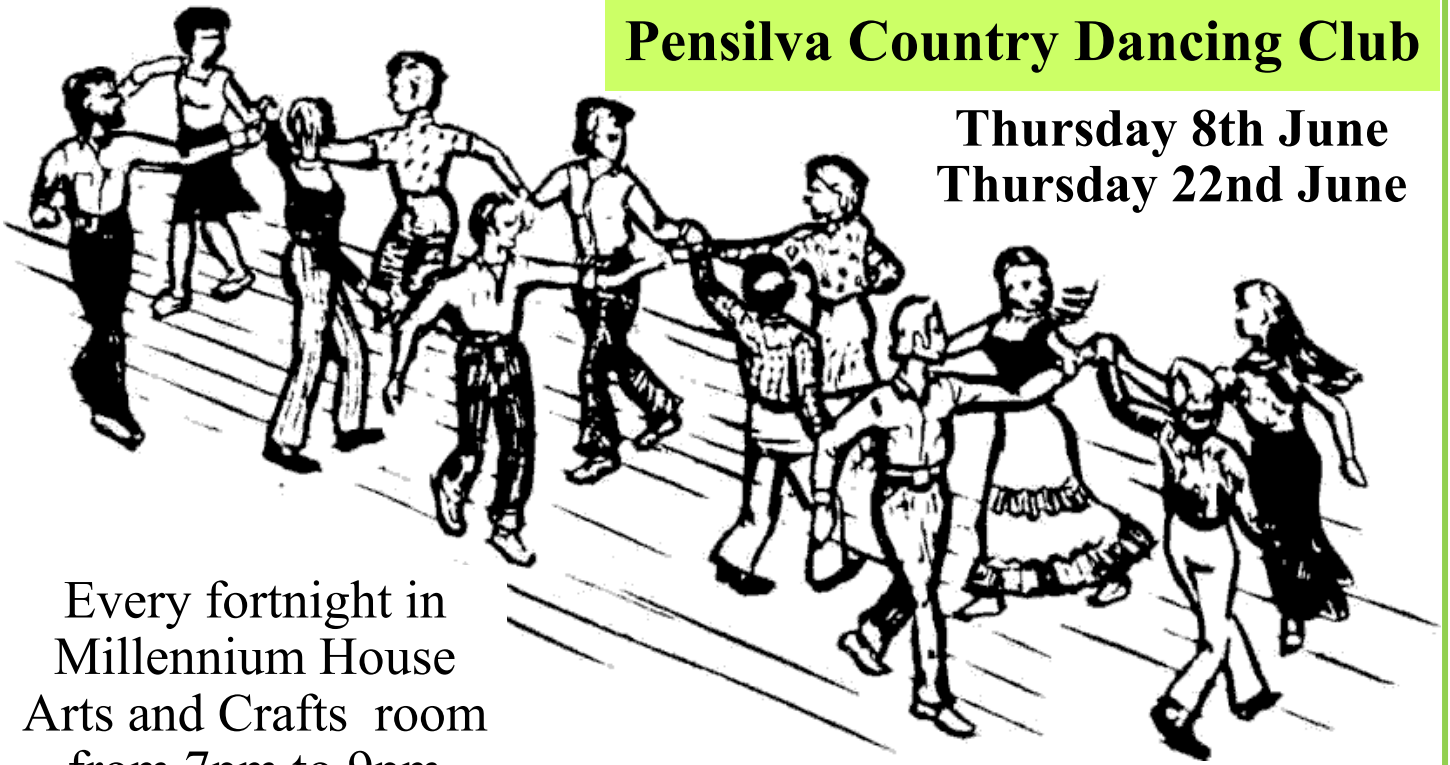
To book yourself in or for any enquiries, call in at the gym or telephone on **01579 363890**, during the opening hours listed above.

**23 years working in our local community to improve health, fitness and well being.**



# Pensilva Country Dancing Club

Thursday 8th June  
Thursday 22nd June



Every fortnight in  
Millennium House  
Arts and Crafts room  
from 7pm to 9pm

For information ring Frances 01579 363718

Action for  
Children

YOUTH GROUP  
FOR 11-19 YEAR OLDS  
UP TO 25 YEAR OLD WITH SEND.



**EVERY FRIDAY 5:00 TO 7:00 PM**

FREE OF CHARGE & OPEN TO ALL

VENUE: MILLENNIUM HOUSE, PENSILVA, LISKEARD PL14 5NF

ACTIVITIES, DRINKS/SNACKS, & A CHANCE TO HELP BUILD A  
YOUTH LEAD GROUP IN YOUR AREA.

FIND OUT ABOUT US @:

[WWW.SERVICES.ACTIONFORCHILDREN.ORG.UK/KERNOWCONNECT](http://WWW.SERVICES.ACTIONFORCHILDREN.ORG.UK/KERNOWCONNECT)

# Bargain Corner Free Ads up to £50

Ads are free for items up to £50. £5 charge for items over £50. Please leave a note at Millennium House reception, ring the Parish Office on **01579 363096**, or email **parishpump@btconnect.com**.

**\*\*\* Please let us know when your item has sold \*\*\***

As new, Kingcamp Avellino pop-up **Beach Tent** in bag. Wind & rain proof, UPF50+ UV prot'n. For up to 4 ppl. **£50..**  
**07523407015** For more details see [www.amazon.co.uk/dp/B08X47Z7MK](http://www.amazon.co.uk/dp/B08X47Z7MK)

**Childs Car Seat.** GRACO Nautilus Groups 1, 2 and 3. To fit ages 9 months to 12 years. VGC. Occasional use only. Complete w/ Owners Manual. **£35.**  
**Tel 01579 362164**

**Cat litter tray** with food feeder & plastic playground fun toy, new, boxed, **£10.** **Dog cooling bowl & antibac chewbone** new, **£5.** Lumie **SAD therapy lamp** boxed, tried once to check, **£25.** Kids **rollerblades** size 4 w/ carrycase knee & elbow pads. VGC. **£5.** Kids **rollerskates** size 2, Dalmation design, w/ carrycase knee & elbow pads. VGC. **£5.** **Nintendo DS**, black with stylus, case, charger, 6 games, VGC, **£20.** **Auntie certificate** w/ fridge magnet & tealight candle holder, ideal gift set for special Auntie, new, **£5.** Black & White with white flower detail, pencil pleat **curtains**, unlined 66x72, new, packaged, **£5.** Two sets **9ct gold necklace** w/ heart or teardrop crystal & matching pierced **earings**, new, boxed, **£5 each.** Dragon dsgn **satin cushion**, **£5.** Ladies **flipflops** size 5, black with red. **£5.**  
**07368 528398.**

Brand new, never used, **temporary spare wheel.** T115/70 R16 92<sup>M</sup>. 17 inch, 4 holes, **£50.** **01579 362846.**

**Stretched canvases on wood frames.** No longer needed.: Two, 120x150cm **£20 each.** Four, in orig. shrinkwrap, 100x80cm **£15 each.** Suitable for Acrylic or Oils. Offers considered.  
07887 787202 Pensilva..

**ABBA albums, £3 each.**  
**Box set Rolling Stones albums, £20.**  
**01579 363363**

**Kirsty exercise bike. £50 o.n.o** (in aid of charity). Can deliver in Pensilva area.  
**01579 363833**

Winter Warm down flow **fan heater.** Model WWDF20. **£18.**  
Epson Stylist **printer.** Model SX130. **£12.**  
**01579 347403.**

**Snooker Table**, 5ft x 2ft 6ins, incl. 2 cues & chalk, full set of snooker balls, scoreboard, & table brush. G.C.  
**£30 ono. 01579 362594**

Axminster 2 speed **drill**, GWO **£10** & **Power Planer** PPL800 800W GWO, new blade needed **£10. £15** for both items.  
**2 Empty Dewalt Tool Cases**, 1 tool box & free Dewalt cordless drill no battery. **£30.**  
New 12'x3'1" good quality hard **vinyl flooring**, light/med brown wood effect **£15.**  
**01579 384658** (Safe Distancing if reqd.)

**Portable gas fire** + full gas bottle. **£40.**  
**Electric hedge trimmer** **£15.** **Oil-filled radiator** **£10.** **Sack truck** **£10.** **Ratchet tree lopper** **£10.** **New drain rods** **£15.**  
**All for sale due to downsizing.**  
Phone Les on **07926 627291** Pensilva.



# ADVERTISING SECTION

**TO OUR ADVERTISERS:** Firstly, thank you for advertising in the St Ive Parish Pump. Your support enables us to provide a much-valued monthly newsletter to our parishioners, while also giving businesses in our area affordable access to a sizeable local market of grateful consumers.

New advertisers are asked to pay in advance. Advertisers who are behind with their payments will have their adverts removed from subsequent editions until payments are brought up to date.

Advertising prices:	<u>Net of VAT</u>		<u>Including VAT</u>	
	<u>1 month</u>	<u>12 months</u>	<u>1 month</u>	<u>12 months</u>
<b>Quarter Page:</b>	£ 8.33	£83.33	£10.00	£100.00
<b>Half Page:</b>	£ 16.67	£167.67	£20.00	£200.00
<b>Full Page:</b>	£ 27.50	£275.00	£33.00	£330.00

Thank you, once again, for advertising in our newsletter. We hope that you will continue to do so, and we wish you every success with your business.



## Group Travel

Day Trips & Coach Holidays

Enterprise Park, Midway Road, Bodmin, Cornwall PL31 2FQ Tel: 01208 77989

### Coach Excursions & Tours 2023

Tue 11th July	Exmouth & River Cruise to Exeter
17th - 21st July	Visit Bournemouth
18th August	RHS Rosemoor Gardens Flower Show
1st - 3rd Sept	Burghley Horse Trials
24th - 30th Sept	Cairngorms, Scotland
11th October	Goosey Fair, Tavistock
4th November	Bridgwater Carnival
24th - 27th Nov	Turkey & Tinsel, Ilfracombe, North Devon
2nd December	Clarks Shopping Village
9th December	Exeter Shopper & Christmas Market
16th or 17th Dec	Cornish Christmas Lights

**Visit our website for all our excursions & tours.**

**Call: Dawn or Robin on 01208 77989 for bookings and brochure**  
**website: [www.grouptravelcoachhire.co.uk](http://www.grouptravelcoachhire.co.uk)**  
**email: [grouptravelcornwall@btconnect.com](mailto:grouptravelcornwall@btconnect.com)**

### Bodmin MOT Centre

**01208 77989**

Garage Services  
MOT Testing Station  
Classes 4, 5 & 7  
Servicing & Repairs  
High Vehicles & Motorhomes  
Brake Test & Headlight Alignment  
Pre MOT Inspections  
Annual & Interim Vehicle Servicing

Commercial interim inspections available  
including brakes and lights

Helping you stay compliant

**Bodmin MOT Centre**  
at Group Travel  
Enterprise Park, Midway Road,  
Bodmin, Cornwall PL31 2FQ





KV Accounting Solutions



## Local Accountant offering fixed fee accounting services

With over 20 years experience, I am a fully qualified, friendly, local accountant

- |   |  |
|---|--|
| ✓ Annual Accounts for Sole Traders and Partnerships | ✓ Self Assessment tax returns                        |
| ✓ Book Keeping & Payroll                            | ✓ iXBRL tax filing                                   |
| ✓ Personal Tax Planning                             | ✓ Tax investigation Fees Insurance                   |
| ✓ Company Accounts                                  | ✓ Company Secretarial work                           |
| ✓ Business Support & Advice                         | ✓ Tax calculations for Sole Traders and Partnerships |

Kate Vaughnley FCCA - Chartered Certified Accountant  
Website : [www.kvaccountingsolutions.co.uk](http://www.kvaccountingsolutions.co.uk) or Email : [katevaughnley@gmail.com](mailto:katevaughnley@gmail.com)  
Telephone : 01579 364083

# Matt's Windows

## Repair of Windows, Doors & Glass Unit Replacement

Making draughty windows great again!

**T: 01579 641228**

**M: 07533 387368**





# GENERAL GARDEN & HOUSE MAINTENANCE

**NO JOB TOO SMALL**

Call to discuss your requirements.  
NO OBLIGATION quotes given.

One off jobs or regular work catered for.

Here are some examples...

## OUTSIDE

MOWING

HEDGE CUTTING

FENCE PAINTING

BOARDER WEEDING

PATIOS & DRIVES

CLEANED

## INSIDE

WINDOWS CLEANED  
INSIDE & OUT.

PAINTING

CLEANING

SHOPPING

IRONING

**CALL ANDREW CARLIN**

now on:

**07407 323888**

Thank you.



**Colin Swinburne**  
**Electrical Services**



All aspects of domestic and commercial electrical work.

Inspection and testing (EICRs), fault finding, new installations, rewires, consumer unit replacement, additional sockets, lighting upgrades, garden power and lighting, extractor fans and more.

Electrician in Pensilva. Free advice and quotes.



CSES@btinternet.com 07974499138



**Right-on**   
**Plumbing &**  
**Maintenance**

*Gareth Haimes*

**Tel: 07947353682**



# Trystan Phillips



## Carpentry/Joinery & Property Maintenance



### 35 Years' Experience

Fully Insured Including Public and Product Liability

All aspects of Carpentry undertaken including:

Bespoke Carpentry & Joinery , Kitchen Installations, Doors, Partitions, Skirtings, Architraves, Shelving, Timber Floors renewed & repaired, Laminate Floors fitted, Timber Windows repaired including 'Sliding Sash'. Plus General Property Maintenance, including Painting/Tiling & much more!

07397 153792    [trystanphillips carpentry@gmail.com](mailto:trystanphillips carpentry@gmail.com)    01579 363150

### Debbie's Care Services

**Tel. 0777 948 3230**

Hello, my name is Debbie. I am a local lady who has been working in the community for over 30 years.

I provide the following services and more!

- Assisting bathing / showering
- Preparation of meals
- Cleaning / Shopping / Ironing
- Companionship / Friendship and emotional support
- Assisting with mobility
- Day, Evening and Night Care

New, High-Quality, Local  
Decorating Service

### EDEN SERVICES



Interior / exterior decorating, including spraying

All work fully insured and guaranteed

References available

High quality work at sensible prices

Over 25 years experience

Call Julian for a free, no obligation quote

**Mobile 07775 515036    Office 01579 641129**

Find us online:  
fresh\_prop.co.uk



Top quality carpet, upholstery & hard floor  
cleaning services based in Callington

Long-established cleaning professional

Domestic & commercial

NCCA qualified & member

Steam cleaning & dry carpet cleaning

Tile & grout + natural stone clean & seal

Vinyl & LVT including Amtico & Karndean

Call 0800 3893393 or 07905 188459

Or email [nevil\\_fresh@msn.com](mailto:nevil_fresh@msn.com)

## TRADITIONAL STONE SERVICES

CLASSIC & TIMELESS  
STONE MASONRY  
AND LETTERING

MEMORIAL CLEANING

COMMISSIONS TAKEN

**01579 363693**

OR

**07507 782282**



Domestic Electrical  
Property Maintenance  
Interior & Exterior Work  
Carpentry :: Decking  
Kitchens :: Bathrooms  
Wall & Floor Tiling  
General Plumbing

**MCCARTHY PROPERTY MAINTENANCE**

**Electrical Safety  
Register**

incorporating  
ELECTSA + ECA  
Certification Ltd

HIGHLY REGARDED LOCAL BUILDER  
COMPETITIVELY PRICED  
COVERING THE SOUTH WEST

Contact Dominic

07968 599 675

01579 362 945

[info@mccarthypropertymaintenance.co.uk](mailto:info@mccarthypropertymaintenance.co.uk)

[www.mccarthypropertymaintenance.co.uk](http://www.mccarthypropertymaintenance.co.uk)



Maintaining and preserving our  
countryside for the benefit of all

Dry Stone Walls

Cobblestoning

Stone faced walls

Hedgelaying/steeping

Land management

All aspects of Landscaping

Mobile: 07539 296799 or

Email: [info@just-in-stone.co.uk](mailto:info@just-in-stone.co.uk)



# Westwood Garden Maintenance



*Antony Watts*

*Grass Cutting, Clearance*

*Weeding, Turfing*

*Hedge Cutting*

*Patio Cleaning, Planting*

*Regular Visits / One-off Contracts*

*Residential & Commercial*

*FREE ESTIMATES*

01579 362019 [www.westwoodgm.co.uk](http://www.westwoodgm.co.uk) 07952 094472

## JPH Plastering and Rendering

Internal plastering

Internal and external rendering

Internal/external painting & decorating

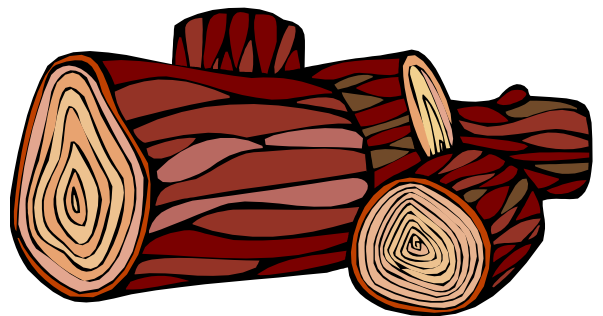
Property maintenance

Landscaping and land management

For estimates and no obligation quotes  
contact Justin on:

**07539 296799** or  
[info@just-in-stone.co.uk](mailto:info@just-in-stone.co.uk)

## SEASONED LOGS



**MIXED LOAD**

or

**HARDWOOD**

Tel. Jonathan

Mobile 07966 070725

or

01579 363157



## PENROSS

Rosecraddock Lodge Holiday Bungalows

(Between Pensilva & Liskeard)

Perfect for family & friends coming to visit!



Sleeps 4

Sorry no pets or smoking

Tel: Julie 01579 362221

Email: penhargetfarm@gmail.com

## NICOLA GREENE

BSc (hons) Podiatry MChs

HPC Registered Chiropodist/Podiatrist

**Home Visit Practice treating all  
your foot care needs:**

- Nail Cutting
- Corns and Calluses
- Thickened Nails
- Dry Cracked Skin
- Verrucae
- Foot Pain
- Diabetic Foot Assessments
- Wound Care

T: 01579 590027

M: 07786164205

E: nicki\_greene@yahoo.com

# ADVERTISE HERE!

This box for just **£20 per month** incl. VAT (£16.67 Net)

**2 MONTHS FREE** for a 12 month order.

i.e. **£16.67 per month** incl VAT for 12 months (£13.89 net)

See the full tariff on page 3

**One thousand copies per month** distributed free of

charge to households in the Parish of St Ive.



Kiln Dried Firewood  
Kindling & Firelighters  
Eco Heatlogs  
LPG Bottled Gas  
Patio, BBQ & Camping Gas  
Coal & Smokeless Fuel



**0800 8021 223**  
sales@loganslogs.co.uk  
www.loganslogs.co.uk

## Heel 2 Toe Footcare

Tired Aching feet.

Corns, Hard skin, Verruca.  
Fungal infected toe nails, or  
toe nails require cutting.

Diabetic feet also treated and  
regularly checked.

I can help to keep your feet  
looking and feeling good.

I am a trained Foot Health  
Practitioner to Diploma Level, fully  
insured & DBS checked.

I can do home visits via an  
appointment.

Call Penny: **07746 926146** for  
further information. **Please note**  
**new number May 2021.**

# J. J. Child

Plumbing and heating engineer.

Oil appliance service, repair and breakdowns.

Over 30 years experience

Call John: 01579 362336 or 07837 921086



## PMB Book Keeping

Friendly Book Keeping Services:

Purchase and Sales Ledger  
Bank Reconciliations  
VAT returns - Making Tax Digital  
Self Assessment Tax Returns  
And More

Fully Qualified, Insured and  
Licenced

T: 01579 683624

E: pmboutsourcing@outlook.com



Fencing  
Paths & Steps  
Turf & Astro turf  
Driveways  
Retaining walls  
Digger work  
Footings & foundations

Patios  
Rendering  
Decking

**And more**

Free no obligation quotes

**Call Rob on:**

**07518246666 or  
01579 641802**

## Debbie Hicks - Counselling and Psychotherapy

*Caring, confidential counselling for all.*

*I work in a therapeutic relationship to  
help you understand yourself better.*

*I offer a warm, approachable, relaxed  
environment for you to untangle your  
thoughts and emotions.*

[www.debbiehickscounselling.co.uk](http://www.debbiehickscounselling.co.uk)

Email: [debbiehicks10@gmail.com](mailto:debbiehicks10@gmail.com)

**07851 133782**

*More info on my  
website or by  
contacting me.*



# Window Cleaner Window Cleaner

**Also any upvc cleaned**

**i.e. fascias, gutters, etc.**

**gutters cleared & unblocked**

**Please phone Rob**

**07709 053464**

# Window Cleaner Window Cleaner



# INDEPENDENT FAMILY FUNERAL DIRECTORS

Supporting families to arrange funerals with sensitivity, dignity and care.

- Flexible, caring approach, tailor-making funerals to suit your needs and budget.
- Open and transparent, affordable pricing.
- Free bereavement support sessions, open to all in our community, first Wednesday of the month, 10am - 12pm.
- Prepayment Funeral Plans available

For details of our services and prices, visit our website.



**01579 362358 | [www.fdhallfunerals.co.uk](http://www.fdhallfunerals.co.uk)**



Avalennek, Caradon Town,  
Upton Cross, Liskeard  
Cornwall PL14 5AR  
Telephone 01579 363598  
Mobile 07901 538132  
[chrisrounsevell@tiscali.co.uk](mailto:chrisrounsevell@tiscali.co.uk)

## HOG ROAST EQUIPMENT HIRE AND MEAT SUPPLY

Hog Roasts For Those Special Occasions  
Self Catering or Hassle Free Service  
Everything done to your special requirements

**CHRIS ROUNSEVELL**  
**TRADITIONAL BUTCHER**

Come and visit our recently updated  
**Tile & Bathroom showroom** in PENSILVA

We offer a generous discount to all Pump Readers

Unit 24 Pensilva Ind Est, St Ive Road, Cornwall PL14 5RE 01579 362264



**CORNWALL TILE**  
CENTRE

Pensilva Showroom

Open Mon - Fri 8.30am - 5pm  
Saturday 9.00am - 1pm

Tiles & Mosaics for:

Bathrooms & Kitchens Living Areas Conservatories  
Patios & External Areas Wet Rooms & Spas Swimming Pools  
& All Commercial Applications

 atlas concorde

[www.cornwalltile.com](http://www.cornwalltile.com)

**OPEN FOR RETAIL, TRADE & COMMERCIAL ENQUIRIES**





THE HOME OF WOOD

## BULK DISCOUNTS AVAILABLE ON OUR 30 YEAR SERVICE LIFE POSTS



OUR GOLD TREATED STAKES AND POSTS ARE THE ONLY ONES AVAILABLE IN THE UK THAT ARE APPROVED BY THE WPA BENCHMARK FOR 30 YEAR SERVICE LIFE

For more information please contact one of our team



Bond Timber, Bake Sawmill, Trerulefoot, Saltash, Cornwall,

PL12 5BW

01503 240 308 [stacy@whbond.co.uk](mailto:stacy@whbond.co.uk)



# Pensilva Stores

**Amazing Value**

**Premier**  
a great deal more from your local store  
Mon-Sat. 7:00 AM. - 9:30 PM.  
Sunday 8.00 AM. - 9:30 PM.

- ✓ Fantastic Special Offers every month!!! (See store leaflets)
- ✓ Come and Check out our great deals on Wine, Beer and Spirits
- ✓ Local Produce: Homemade Butter and Clotted Cream, Meat from our local butcher
- ✓ Cornish Fresh Fruit and Vegetables
- ✓ Fresh Bread, Pasties and Cakes
- ✓ Take Away Coffee, tea and hot chocolate
- ✓ Newspapers and Magazines, Greeting Cards
- ✓ Paypoint, Lottery

\* **Free to use ATM** \*  
\* **Card Payment** \*

*Friendly Staff + Service with a Smile !!!*

**Pensilva Stores is a family run business who have been serving local people and visitors for more than 21 years.**

Higher Road, Pensilva, Liskeard, Cornwall PL14 5NQ

Tel: 01579 362547

# MENDOLOGY

## Garage Door Specialist

- Repairs
- Servicing
- Installations


Out of hours service  
call Dave anytime 07974 442645

**MENDOLOGY** COMMERCIAL DOORS LTD  
www.mendologydoors.co.uk

**01579 363760**

# PensilvaCars

01579 363516

- ✓ MOTs Class 4
- ✓ Service
- ✓ Repair
- ✓ Tyres
- ✓ FREE Courtesy Car
- ✓ Car & Van Sales
- ✓ Diagnostics
- ✓ Air Conditioning
- ✓ 

**We have offered a supply, fit & balance of tyre service for 10 years at competitive prices.**

**Most of our tyres can be supplied the same day.**

**LOCAL RECOVERY £45.00**

**[www.pensilvacars.co.uk](http://www.pensilvacars.co.uk)**

**[pensilvacars@hotmail.co.uk](mailto:pensilvacars@hotmail.co.uk)**

We can service and repair your car to manufacturer specification, keeping your dealer warranty without main dealer expense.





# Pensilva & St Ive Post Office Service

**Pensilva:** Through the coffee shop on the 1<sup>st</sup> floor of Millennium House

**Tuesdays:** 9am to 1pm.

**Wednesdays:** 9am to 12 noon.

**Fridays:** 9am to 12 noon

**The Millennium House  
coffee shop is also open on  
these mornings.**

.....

**St Ive:** At St Ive Village Hall

**Wednesdays:** 10:30 to 11:30am

**Coincides with the St Ive  
Village Hall Coffee Morning**

## Saint Ive Parish tree-planting survey

Please let us know about any trees that you plant within the Parish. We will include them in our own survey and we will notify the Forest for Cornwall on your behalf, if appropriate.

email [posicrp@gmail.com](mailto:posicrp@gmail.com) or message us on Facebook

[www.facebook.com/posicrp](http://www.facebook.com/posicrp) or phone 01579 364016.

Pictures very welcome.

