

THE PARISH PUMP



June 2023
Edition 499



The Newsletter for the Parish of St Ives



Congratulations Pensilva FC under 16s football team who completed the 2022-23 season undefeated!!! They won the under 16s Premier league as well as the Premier League Cup, beating Wadebridge in the final. They are pictured here with their trophies and medals alongside coaches Paul Lambert and Colin Britten.

Disclaimer

The articles appearing in this magazine do not necessarily reflect the views of the Parish Council nor of the Parish Pump Editor.

Parish Councillors Telephone List

Alan Moss (chair)	01579 362064	Marlene Carr (vice-chair)	01579 362919
James Bruce	07411 192645	Martin Corney	01579 382450
Rosemary Farley	01579 384810	Nigel Gisby	01579 363096
Tony Hodson	07973 536964	Nigel Libby	07968 891814
Paul Mann	01579 363757	Patricia Steer	01579 363096
Ivor Vaughan	07979 934604	Craig Vaughnley	01579 364083
Sharon Daw (Cornwall Councillor) 07837 379305 slash.dash.daw@gmail.com			

Meetings of St Ive Parish Council

Meetings are now being held on the 2nd Monday of the month except August and December when no meetings are held. Please see the Parish Council website for meeting dates, agendas and minutes.

<http://st-ive-parishcouncil.gov.uk/minutes-agendas/>



Devon & Cornwall Police
Building safer communities together

 **101**

Minicom 18001 101

Police Community Neighbourhood Office

Your Community Support Officer is PCSO Steve Edser 30173.

email: CIOSNBMLLST@devonandcornwall.pnn.police.uk

To report a crime call 101 or go to www.devon-cornwall.police.uk

In an emergency call 999

Contact details for St. Ive Parish Council and for Millennium House

Address for correspondence: Millennium House, Century Square, Pensilva PL14 5NF

General Parish matters should be raised initially with the Parish Clerk, Jenny Hoskin, who will present them to the Parish Council.

Telephone: 01579 363096, email: stiveparish@btconnect.com

For accounts matters for the Parish and for Millennium House contact John Body, Finance Officer: 01579 362102, email: millenniumhouseadmin@btconnect.com

Millennium House enquiries and reservations: 01579 363096

email: millenniumhouse@btconnect.com.

On the web: Millennium House Website: www.cornwallvenue.com

Parish website: st-ive-parishcouncil.gov.uk Facebook: facebook.com/stiveparishcouncil

PARISH PUMP ADVERTISING COSTS

The prices for advertising in the Parish Pump are as follows:

The below prices include VAT at 20%:

Quarter page: £10:00 per month or £100:00 for 12 months.

Half Page: £20:00 per month or £200:00 for 12 months.

Full Page: £33:00 per month or £330:00 for 12 months.

Parish Pump Information and Contact Details

To contact the editor please email: parishpump@btconnect.com
or phone the Parish office: **01579 363096**.

Hardcopy submissions by post or by hand to the Parish office, Millennium House, or Millennium House reception.

Softcopy submissions: By email to the editor in MS Word, MS Publisher, pdf, Tiff or jpeg. Please use A4 pages and minimum 16 point font as the Pump is initially produced in A4 size and reduced to an A5 booklet at the printing stage. If in doubt please contact the editor.

Bargain Corner free ads by email to the editor or drop off at the Parish Office.

Deadline for the Parish Pump is STRICTLY 15th of every month

Parish Council (Pensilva Ward)

A vacancy exists on the Parish Council, Pensilva Ward, following the resignation of Cllr. Sandra Doe.

Please see notice boards for further information.

If you are interested in giving up some volunteer time and becoming a parish councillor, please contact the parish clerk for details.

Jenny Hoskin

Clerk

St Ive Parish Council

Email: stiveparish@btconnect.com

Vacancy for Parish Pump Editor

The parish council is seeking an editor for the Parish Pump.

If you have editing skills and would like to help with the publication of this monthly parish magazine please get in touch. You will be required to edit reports, liaise with advertisers and monitor the content of information published.

Please contact the parish clerk for further information.

Jenny Hoskin

Clerk

St Ive Parish Council

Email: stiveparish@btconnect.com

Telephone: 01579 363096

From the Editor

You will probably have noticed the advertisement on the facing page for a new Parish Pump editor, so I suppose I should write something about that.

I approached the Parish Council chair earlier this month about giving up the job and, after a brief discussion, we agreed that I would edit the June and July editions, then finish. If a new editor has been appointed in time, then the July edition could be a joint effort and would serve as a handover exercise. In any event, I am prepared to do everything I can to help to make the transition as easy as possible.

It may be that the new editor will feel the Parish Pump needs updating, and I wouldn't disagree. I have felt for some time that the Pump needed a new look, but I didn't seem to have the vision to put that into practice myself. In the nine and a half years that I have been doing the job, our parish - and our world - have seen huge changes in the way that information is shared. While social media was certainly around back when I started the job, many (maybe most) of us still depended on more traditional media for news and information. The balance between new and old media has changed hugely since then, but I have a feeling that our monthly newsletter in print still serves an important purpose in our parish; at least, so people tell me.

I had been thinking for some time about when I might step aside, mainly because I desperately need to free up time for other things! Then I thought, why not make the 500th Parish Pump my last?

I will save the farewells until next month. See you then.

Joe

200 CLUB Draw Results for April 2023

**1st No. 36
Mrs J. Hall**

**2nd No. 136
Mr P. Gibson**

**3rd No. 118
Mrs M. Philp**

Thank you

**COMMUNITY COFFEE SHOP
MILLENNIUM HOUSE PENSILVA
COMMUNITY COFFEE SHOP
MILLENNIUM HOUSE, PENSILVA**

**We are open Tuesdays, Wednesdays and Fridays
9.a.m. to 1.p.m. (to coincide with the Post Office).**

We, the volunteers, opened the Coffee Shop in 2017 with the hope of giving something back to the community. The atmosphere is relaxed, making it an ideal place to enjoy meeting up with friends for a cuppa and a chat. A warm welcome is assured.

We would like to say a huge 'Thank You' for your continued support.

Opening times for the Mel Bar at Millennium House

Monday	Closed		
Tuesday	5-11 pm	Wednesday	5-11 pm
Thursday	5-11 pm	Friday	5-11 pm
Saturday	5-11 pm	Sunday	12 pm -5 pm

Please note: under 18s are welcome in the bar, with an accompanying adult, until 9pm.

Dogs Welcome

From the Millennium House manager.

Hi Parish Pump Readers,

I hope May really was magical for you all and you enjoyed the Coronation celebrations and parties attended; whether you are a royalist or not, I hope you enjoyed all the bank holiday fun that was available to everyone!!? Thank you to those who supported the Coronation celebration here and we hope you enjoyed the Taylor Trio Band! We have many more bands booked up throughout the year, our next band night is Saturday 19th August 2023 with Mind Your Manners!

This coming month we have more packed in for you!

Saturday 3rd June - craft, spiritual and wellbeing market.

Thursday 8th June - Country Dancing - from 7pm to 9pm

Saturday 10th June - Lego Club - from 9.30am to 11.30am

Saturday 10th June - Quiz Night - from 7pm

Wednesday 21st June - Bingo - from 7pm (held 3rd Wednesday of each month)

Thursday 22nd June - Country Dancing from 7pm to 9pm

Friday 23rd June - Film Club - from 7pm

Sunday 25th June - Antiques Fair - from 9am to 3pm

Wednesday 28th June - Pop Up Play Village from 10.30am to 11.45am

Don't forget we also have Yoga every Monday at 5.30pm with Laura and every Wednesday at 6.30pm with Alexis!

Mims exercise session every Monday from 10.30am to 12pm.

Badminton every Monday and Tuesday from 7.30pm to 9.30pm with Nigel.

Ladies Walking Netball every Thursday from 4pm to 5pm with Rosemary.

Aikido every Thursday evening from 7.30pm with Ron.

Youth Club is every Friday from 5pm to 7pm, for 11 - 19 year olds with Sam.

Slimming World every Friday at 5.30pm & Saturday at 8am & 9.30am with Hayley.

We will also be having Clubbercise every Friday evening from 7pm with Jasmine!

We will be having a Barn Dance on Thursday 3rd August 2023 hosted by Theatre Royal Plymouth. Be sure to book your tickets for an evening of family-friendly, toe-tapping fun, with live music from the talented Freedom Fields Ceilidh Band. An unforgettable evening of live music, dancing and delicious beer, cider and pasties! Visit theatreroyal.com/whats-on/barn-dance-pensilva to book your tickets now!!!!

I know there have been a few questions about Gala Day! The Preschool is organising a Gala Day for Saturday 19th August 2023. If you can support this, that would be amazing!

The diary is filling up with weddings, anniversaries, birthdays and more. If you have a function, event or even a group you would like to start up, please contact us via phone on 01579363096 or email ness.mhouse@gmail.com

Have a joyful June

Vanessa

Letter to the editor. A good walk spoiled!

My wife and I woke up today and we decided to go for a walk to Pentiddy. It was glorious! The sun was shining and the temperature was perfect for walking; not too hot or too cold. Pentiddy looked lovely with the trees all at various stages of producing leaves and new growth. We did the usual circuit and sat on the stones looking over the burial ground which is a beautiful view. As we started the last section back towards the village, a group of dogs and their owner appeared walking towards us. Suddenly the dogs started running towards us and jumped up at my wife who found this quite distressing and they kept jumping up and my wife was crying out for them to stop.

It was a few minutes before the owner was able to get control of them as they did not respond to commands. The only comment from the owner was 'didn't know you were there'. Regrettably, there was no apology or concern for my wife or the state of her clothes that were now soiled with mud from the paws of the dogs repeatedly jumping up at her. The dogs were eventually collected and put back on a lead and led to the car and loaded in.

We continued our walk home and took our clothes off and put them in the washing machine.

We both appreciate what a wonderful place Pentiddy is, not just for people but for dogs also. However, it seems to me that if dogs are not under the control of their owners then they should be kept on a lead. Neither my wife nor I have any dislike for dogs. If the dogs had just passed us by, there would not have been any need for me to write this letter and we would all have had an enjoyable walk.

MILLENNIUM HOUSE



YOGA FOR EVERYONE

MONDAYS from 5:30pm with Laura,
AND WEDNESDAYS from 6:30pm with Alexis

**£7 per class. Must bring
your own yoga mat.**

At Millennium House, Pensilva - tel: 01579 363096

**PENSILVA
MILLENNIUM
HOUSE**

UPCOMING EVENTS

JUNE 10

QUIZ NIGHT

TEAMS OF UP TO 8, £2 PP. RAFFLE IN AID
OF BLOOD BIKES

AUG 19

MIND YOUR MANNERS

ROCK/METAL COVERS BAND

SEPT 30

BARN DANCE

FEATURING DARTMOOR PIXIES

OCT 31

HALLOWEEN PARTY

DISCO AND PRIZES FOR BEST COSTUME

NOV 25

POLPERRO FISHERMANS CHOIR

FURTHER INFORMATION WILL BE AVAILABLE CLOSER TO THE TIME OF THE
EVENT - KEEP AN EYE OUT FOR POSTERS AND IN THE PARISH PUMP

St. Ive Village Hall PL14 3LZ

HALL HIRE - £5 an hour

Includes the use of kitchen and electric
(except wall heaters which are on a coin meter).
For bookings ring Beth: 01579 382066 or 07476 156659

Regular Group and Activity Timetable

Gardening Club	1st Monday monthly 7:30pm	01579 382762
St Ive Snooker Club	Mondays & Thursdays 7:00pm	01579 382315 R Bunkum
Mobile Post Office	Wednesday 10:30 - 11:30 am	
Coffee Morning	Wednesday 10:30 - noon	
Parent and Baby drop in	Thursdays (term time only) 10am to midday	Beth: 01579 382066 or Amanda: 07703 393070
Methodist Church Sunday Service	Check timetable in Parish Pump for services	Katherine or Keith Mutton 01579 382334

St Ive Village Hall. Programme

BINGO. CHANGE OF DATE. Friday 30th June. See notice.

St. Ive Village Horticultural Show. Fri/Sat 1st/2nd Sept.
Cups & Rosettes. 50p per entry. Free for children. Refreshments and raffle.
See details & schedule.

Spooky Hall Family overnight camp-in. Saturday 21st Oct.
Games, children's bingo, supper, hot chocolate and breakfast included.
Children must be accompanied by a parent. 8pm to 8am. £5 per person.

Christmas Wreath Making. Saturday 25th Nov.
Was very popular last year. Bookings taken. Refreshments included. £20.

Supper with Santa. Saturday 2nd December 3pm to 5pm.
Santa stops for tea, reads a story to the children and answers questions.
Individual time for photos and a selection box from Santa.

Very popular, so there will be limited spaces. Date yet to be confirmed).

To book places or for more info, call Beth:
01579 382066 or (mobile) 07476 156659

All at St Ive Village Hall, The Cross,
St Ive, PL14 3LZ

Monday and Thursday
evenings at 7pm



Contact Ray Bunkum
01579 382315



1st Monday of the month

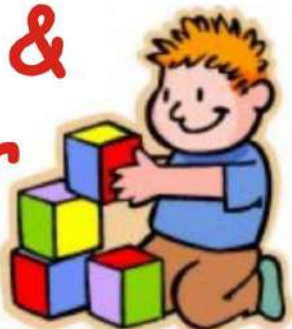
7.30pm

New members welcome

CHANGE OF DAY.

NOW THURSDAY MORNINGS
FROM THE 1ST WEEK IN JUNE.

**Parent &
Toddler
Group**



Running weekly (Term time Only)
10am to 12midday.

Tea, biscuits and company.

Make new friends

Cost £3.00 per adult

Wednesday mornings

**POST
OFFICE**

® Travelling post
office

10:30 - 11:30 am

Coffee Morning

10:30am - midday



Sundays

Methodist Sunday Service

Check chapel notice for details.

St John's
Church
Pensilva



BAKED POTATO LUNCH

BRING and BUY STALL

Thursday 1st June
12.00 to 1.30 pm

Donations to support church work in our community

Teatime
Church



For children and their families
Playing Games
Singing and Praying Together
Sharing a Bible Story

Sunday 4th June 3.45pm
St Cleer Parish Church

Sunday 18th June 3.45pm
St John's Church Pensilva

Eating Tea

For more information
contact: Rev Li Selman
revliselman@icloud.com



MILLENNIUM HOUSE EVENTS GROUP PRESENTS

**£2
PER PERSON;
TEAMS OF
UP TO 8**

QUIZ NIGHT



SATURDAY 10TH JUNE @7PM

**FEATURING A RAFFLE IN AID OF BLOOD BIKES
HOSTED BY QUIZMASTER JOE BICARREGUI
AT MILLENNIUM HOUSE, PENSILVA**

Valley Voices

Summer Concert

a varied selection of sacred and secular music for chamber choir



Saturday 17th June 2023

St Ive Church

near Liskeard

Entry by donation. All proceeds to the Church
Refreshments in the Interval

Artwork by Nicky May www.nickymayart.co.uk nickymayart@gmail.com

PENSILVA RVS WEDNESDAY CLUB

We are happy to announce that the Wednesday Club has re-started: Wednesdays from 1.p.m. to 3.p.m.

Meetings will be held at Pensilva Village Hall - Entry £2.

Looking forward to meeting up with our original members and new members are welcome. For further info, please contact:

Cherry Woodhouse (Chairperson) 01579 363674

OR Marlene Carr (Secretary) 01579 362919

St John's Church Pensilva Good Grief Cafe



Wednesday 21st June
3.00 to 5.00 pm

We can grieve for many reasons:
the death of a friend or relative;
the diagnosis of a friend or relative
with dementia or a terminal illness;
loss of mobility or driving licence;
closure of your place of worship;
closure of a support group;
the loss or illness of a pet;
the loss of freedom;
the loss of a job;
homelessness;
the loss of stability in society.
The Good Grief Cafe is for anyone
who is grieving for any reason.
Come for company, for friendship.
Eat cake, drink tea and coffee.
Chat if you want to,
or just be there.
Everyone is welcome.

For further information
contact Geoff 01579 362698

Pensilva



MemoryCafé

Thursday 22nd June
2.00 to 4.00 pm

If you have
memory problems
or
you are a carer
for somebody
who does
and
would like to
meet others
who understand
your situation
then join us at
St John's Church
Pensilva

Contact Geoff 01579 362698

Pensilva Community Association and C-FyIm Present

PENSILVA FILM CLUB



FRIDAY, JUNE 23rd

DOORS OPEN 7PM, FILM STARTS 7:30PM

THE LOVE PUNCH

£3 for C-FyIm members

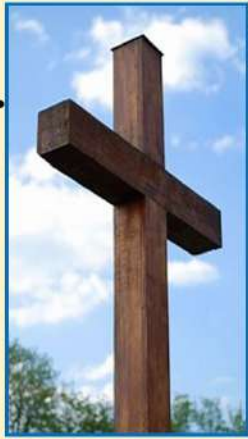
Non-members can join on the door for £6, which includes your first film



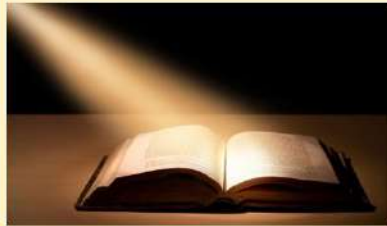
Richard and Kate, a divorced couple, take the help of their neighbours Jerry and Penelope to fight the injustice done to them by a corrupt French businessman.

PG-13 Comedy - 1h34 m
SCAN FOR TRAILER ----->





FOOD for THOUGHT



SUNDAY

25th

5.00 PM

St John's Church
Pensilva

A time of fellowship
and informal worship
with a shared afternoon tea



For further information
& to arrange transport:
Geoff 01579 362698

stitch knit and natter

Do you enjoy stitching,
knitting, crocheting?

Join our friendly knit and natter group.
Come and meet new friends and swap tips
and ideas - all ages and abilities welcome!

Drop-in!

There is no charge
for this activity but there
is a Donation Box if you
would like to make a
cash contribution.

**Tuesday
27th
June**

**St John's
Church
Pensilva
on the
last Tuesday
of the month**

**2.00
to
4.00 pm**

**Contact Kathleen
01579 363686**

BINGO at St Ive Village Hall, The Cross, St Ive, PL14 3LZ



CHANGE OF DATE

FRIDAY 30TH JUNE, 2023

7pm – 7.30pm (eyes down)

**Raffle and Refreshments Available
or Bring Your Own Bottle**



**Friday 30 June 2023
is National
Cream Tea Day!**

To celebrate, each of our hospices are holding cream teas for the families we support. Join us by hosting your own cream tea to help raise vital funds for children and young people living with life-limiting conditions.



Register for your free fundraising pack www.chsw.org.uk/creamtea



Making the most of short and precious lives across the South West
Registered Charity No. 1003314



ST. IVE VILLAGE HALL, PL14 3LZ

ANNUAL VILLAGE SHOW

SATURDAY 2nd SEPTEMBER 2pm

Any enquiries to Beth Sheldrake

email: bethsheldrake9@gmail.com

or Rosemary Farley 01579 384810

HANDICRAFTS

- | | | |
|---|---|--|
| 1 | HANDMADE CARD | Any medium, any size, any celebration. |
| 2 | SOMETHING NEW FROM SOMETHING OLD | Create, sew, change anything! |
| 3 | KNITTING/CROCHET | Any item. |
| 4 | CROSS STITCH/EMBROIDERY/TAPESTRY | Any item. |
| 5 | FRAMED PICTURE OR PAINTING | Any medium. |
| 6 | HOMEMADE HANDICRAFT (not included in the above classes) | |

PHOTOGRAPHY

- | | | |
|----|--------------------|-------|
| 45 | CORONATION | Print |
| 46 | OWN CHOICE | Print |
| 47 | KEEPING ACTIVE | Print |
| 48 | FUNNY/MOST AMUSING | Print |

PHOTOGRAPHY UNDER 15

- | | | |
|----|--------------------------|-------|
| 57 | ON THE FARM | Print |
| 58 | OWN CHOICE | Print |
| 59 | FUNGUS | Print |
| 60 | THE GREAT BRITISH SUMMER | Print |
| 61 | WEEDS | Print |

There was a bit of space to fill in this edition, so here is a wonderful photograph of a steam engine puffing away on a lovely May morning in Slade Park Road, Pensilva. Thanks to Martin Sellix for sending it in. If you'd like to see the picture in colour, take a look at the Parish Pump online version: <http://st-ive-parishcouncil.gov.uk/parish-pump/>



THIRTEEN+ YEARS OF WILDLIFE WATCHING IN THE PARISH OF ST. IVE

Since moving to the Parish at the end of 2009, I have been photographing and recording the wildlife which I see at my home on the edge of Pensilva on a daily basis. This month I will tell you a bit about a large bird which is currently intent on destroying my bird feeders (!)

... THE CARRION CROW



The carrion crow is the second largest British member of the crow family. Only the Raven (which we sometimes see on Caradon Hill) is larger. It is all black with a black beak and no grey hood. Although the Raven is much bigger, they are very similar otherwise and distinguishing them can be difficult if you have nothing to gauge size against. However, if you get a view of the tail, the crow's is squared off, whilst the raven's has a V-shaped end.



The crow is one of the cleverest and most adaptable of British birds, as we have found to our cost. For the second time we are waging a battle over the fat balls with them! They have worked out how to lift the fat ball holder off the frame and drop it to the ground so as to be better able to lift the lid to



give easy access to the goodies. We have wired it on, but they quickly

worked out how to feed it around the hook rather than just lifting it. As in 2021, we are now having to come up with ever more complex wiring in order to save something for the other birds! Unfortunately, this time, they have also lifted off the seed feeder which smashed onto the steps below. Luckily we have a spare. Although fearless birds, they are wary of man, and unlike many birds are aware of you inside the house. Our crows have learnt to come early in the morning to do their worst before we are up! In addition to our offerings, crows will eat insects, worms, seeds, fruit, eggs and (as their full name suggests) carrion. As well as eating almost anything, they can be found almost anywhere.

Unlike rooks, crows are usually seen either alone or in a pair. We once had 4 in the garden, but they were probably fledglings which were still moving around together. Crows are monogamous and often pair for life. Pairs will build a solitary nest, using twigs, bones, rags and anything else they can find, siting the nest in tall bushes. They lay between 4 and 6 brown eggs with blue speckles, between March and June. The female will incubate the eggs for up to 20 days. (It is unusual for birds where male and female look the same, for only the female to sit on the eggs - this may be an indication of how far up the food chain they are and so less vulnerable or perhaps just because black is a less conspicuous colour.) The young birds will fledge about a month after hatching.

Carrion crows commonly live for between 5 and 6 years, but they have few predators and some ringed birds have been found to live for twenty years. As I mentioned in my article about buzzards, crows are frequently seen harassing these much bigger, powerful birds, perhaps sometimes because they have nests nearby or maybe because the



buzzards also eat carrion and are therefore competitors for food. You may also remember that they once evicted a pair of buzzards and took over their nest across the valley from our home.

Unsurprisingly, these amazingly adaptable birds are on the green list as a currently unthreatened species.

HAPPY WILDLIFE WATCHING - Hilary

St Ive & District Gardening Club Report May 2023

On 2nd May we visited Brown's Nurseries in the village of Trewidland. Many of us were saying 'I've never been to Trewidland; I didn't even know this Nursery was here'. As we gathered, it was wonderful to see new faces; 'welcome to the gardening club' & 'hello I'm...' were heard.

Tony & his granddaughter Alisha greeted us. Tony explained he is retired, or rather, meant to be retired! Alisha runs 'Looe Valley Plants.' Tony said they would take us around, & we could ask questions as we went. In the first of an array of polytunnel & greenhouses is Alisha's Looe Valley Plants. The plants are laid out in rows, prices and information tabs in each pot & a fantastic display of Alisha's succulents displays (more about these later). Then we saw a greenhouse where the hanging baskets are produced. There were so many, all carefully made with brightly coloured flowers flowing around & over them. Tony explained their hanging baskets are made with good plants, slow release fertiliser, plant feed & pot ash to encourage the flowers. Making a hanging basket display is a craft; it's not just popping some plants in a basket! The Coronation was early for a lot of flowers to be out, so producing baskets with red, white & blue had been a challenge, but they managed well; that day saw 100 hanging baskets leave for their destination. The next greenhouse was an open greenhouse, the roof was non-existent. Tony said he would be lying if he said it was intentional, but it actually makes a good home for certain plants. This is where the vegetable plants live, mostly for wholesale & hugely popular. They have cabbage, broccoli, turnips, to name but 3! Another was runner beans which they grow from seed. This year they had 20 kilos of seeds; all hand sown. (Alisha later told me she did heaps of these & once you start you can become quite quick!) All grow into plants & only a few remained. We were all impressed; Tony knows his stuff, Alisha gets stuck in & there is passion for the Nurseries. Further down is the biggest greenhouse which is full of plants - a sight to behold! Flowers, leaves, colours, all neatly laid out. Each greenhouses is like a cross between a Tardis & a Labyrinth – bigger on the inside than you think & a total maze, but a good maze to be lost in! We reach the "cold tunnel"; no sides (but there is a roof!). This is home to the alpines, rock plants, succulents. The Nurseries propagate their own, take cuttings, re-plant, nurture & wait. Again, all laid out in neat rows within their own variety and all very organized: information tabs all facing the same way. It was like a nursery of succulents within the Nurseries!

We were shown a machine which fills pots with soil. Tony turns the machine on, with Alisha at the other end, ready for the filled pots. Before you can think, the tray emerges, the next one on its way! Alisha is a pro at this, moving fast but with precision, each filled tray stacked on top of the ones before. The next demo was taking a seedling from its bed without damaging it. Don't touch the stem, only the leaves. Damaged stems can cause disease & can easily kill the plant. Tony explained Nursery life is a guessing game. What will become fashionable? What the public wants changes so quickly. Here they avoid waste as much as they can. Our tour ended at Alisha's shop. It was a lovely Spring evening, the sun setting & a playgroup of swallows making the most of the evening too. While we watched them dive & turn we were given tea, coffee & biscuits. Next to the shop are crafts by local artists, a perfect complement to the nurseries & plant sales. Tony & Alisha are honest,

genuine people and this comes through in the businesses. There is hard work, care & the knowledge is so impressive. At the end of the evening Alisha was animated and passionate as she spoke about succulents. Browns Nurseries & Looe Valley Plants is a place truly worth visiting & supporting. Now we can all say we've been to Trewidland & we certainly know Browns Nurseries exists. Follow Looe Valley Plants on Facebook & Instagram!

Next visit: Mon. 5th June to The garden at Trethew, Lanlivery, Bodmin. £5 entry. Meet at St Ive Park car park to leave at 6:30pm – PL14 3LZ. Car share: £3. We're a friendly bunch who'd love

Pensilva Film Club

May's movie attracted one of our largest audiences to date, including several new members in addition to our regulars. The film split the audience, with some really liking it and others not so much. Perhaps it came a bit too soon after 'A Man Called Otto' the previous month, as both had a similar storyline in many ways. Both came highly recommended, but I personally found them a bit slow and predictable, albeit well-acted.

Pensilva Film Club (Part of C-Fylm, Creative Kernow)

Presents: At Millennium House, Pensilva

The Love Punch

Friday, June 23rd 2023 : 7pm for 7:30 start.

In a complete turn-around (and due to popular demand!) our next couple of films will be much more light-hearted, starting with 'The Love Punch' on Fri 23 June. With a star-studded cast of Pierce Brosnan, Emma Thompson, Timothy Spall and Celia Imrie, this follows the escapade of "Richard" who decides to steal something of worth from his previous employer when he is unable to access his rightful pension entitlement – a bit of light-hearted escapism we can enjoy on a summer's evening.

I would like to thank everybody for their patience at the desk when we are busy. It can get a little chaotic I'm afraid, especially if there are lots of new registrations etc. We have to send attendance details to C-fylm so it is important that we try to keep these records accurate. We also appreciate the correct money when possible, we do not yet have a card payment function available. Looking forward to seeing friends, old and new on the 23rd.

For further details contact Judy on 01579 208836 or judy.two@outlook.com
Pensilva Film Club in association with C-fylm, part of Creative Kernow.

Pensilva W.I May meeting report.

Double celebrations for Pensilva W.I this month. The coronation of King Charles and 75 years since the formation of our W.I.

How very different life must have been in the 1940s just after the war when our first meeting was held. I'm sure even then the ladies would have enjoyed a good party, although food wasn't plentiful and they certainly wouldn't have been greeted with glasses of bubbly. We certainly have a lot to be thankful for.



After Verna our president gave a short business report it was down to partying starting with supper. The tables were beautifully laid with the best china, lace table cloths and cake stands laden with cakes. Gentle party games followed and the beautiful birthday cake made by Cherry Woodhouse cut.

A lovely evening enjoyed by us all.

Forthcoming events: We were reminded of the litter pick around the village on the Saturday, and also the birthday lunch at St Mellion on the Sunday. This coming month will see us visiting Prideaux Place and also an afternoon walk on Caradon. Next month's walk will mean catching the bus from Callington, and then the bus to Bude, to walk the canal. Later in the month we have a visit to Deer Park Farm, Callington for a farm walk. Lots to look forward to.

Competitions results for this month.

Flower of the month: 1st Irene Elliott, 2nd Sue Turpin, 3rd Cherry Woodhouse. A Royal commemorative item. 1st Frances Tucker, 2nd Trish Thomas, 3rd Cherry Woodhouse.

Next Meeting: Wednesday 14th June, 7.15pm at Millennium House. Tamsin Middleton will speak about computers and beyond. Understanding technology today.

Competitions. An old communication item, and flower of the month.

New members and visitors are always very welcome. You really don't have to be a cake baker etc. most of us aren't. Just come along and enjoy the activities on offer, we are a very friendly bunch.



The litter-pickers.

ST JOHN'S CHURCH, PENSILVA

A united congregation of the Church of England & the Methodist Church

SERVICES JUNE 2023

Sunday	4 th	No Service at St John's
	10.30 am	Bishop Hugh at Quethiock Parish Church
Sunday	11 th	11.00 am St John's Worship Team
Sunday	18 th	11.00 am Rev Martin Sellix <i>Holy Communion</i>
Sunday	25 th	11.00 am Mrs Ros O'Connell <i>Methodist Local Preacher</i>
	5.00 pm	Food for Thought
Thursdays	10.00 am	Morning Prayer Fellowship

JUNE EVENTS Please see posters for full details

Thursday	1 st	12.00 - 1.30 pm	Baked Potato Lunch
Sunday	18 th	3.45 pm	Tea Time Church for children and their families
Wednesday	21 st	3.00 - 5.00 pm	Good Grief Café
Thursday	22 nd	2.00 - 4.00 pm	Memory Café
Tuesday	27 th	2.00 - 4.00 pm	Stitch, Knit & Natter

For further details or if you know of any illness or need in the village, please call Geoff, 362698 or Frances, 363718

Unity Methodist Church St Ive with Bealbury and Blunts

Meetings at St Ive Village Hall unless stated otherwise

Services for June 2023

Sun 4th June	10.30 am	Cluster Service at Quethiock, led by the Bishop of Truro.
Sun 11th June	10:30am	United Service at St Ive Village Hall. Keith Mutton.
Sun 18th June	11.15am 6.00pm	United Service at St Ive Parish Church Church Anniversary Service at St Ive Village Hall with Mrs Ruth James
Sun 25th June	10.30am	United Service at St Ive Village Hall with Rev Jonathan Budd

The Chattermakers craft group meets fortnightly at St Ive Village Hall and is open for all to come and join in. Bring your project, bring yourself and share in a time of chat and craft over a cuppa. All welcome. More details from Kathryn on 01579 382334.



Liskeard Repair Café “If you can carry it, we’ll do our best to mend it!”

We are a friendly group of volunteers, with repair skills in all kinds of fields. We come together once a month to help people by repairing clothes, furniture, electrical equipment and appliances, bicycles, crockery, toys, etc. You can sit with our repairers and learn new skills and get some expert advice, or you can spend time chatting with others whilst enjoying a free tea or coffee and cake.



We are part of a nationwide network of Repair Cafes aiming to create a more sustainable future by avoiding unnecessary disposal of items that can receive a new lease of life with a simple repair. Best of all, the Repair Café is a place for people to come together and see how much fun it is to repair things.

Repairs are free, but donations are gratefully received to cover costs.

Second Saturday of each month, at the Liskerrett Community Centre, Varley Lane, Liskeard, PL14 4AP. There is a some disabled parking at the Centre and plenty of other parking at the Cattle Market Car Park by the Centre.

Find out more on our FaceBook Page, just search for Liskeard Repair Café.

There is always room for more volunteer repairers: drop into one of our sessions, send us a message via our FaceBook Page or email liskeardrepaircafe@outlook.com

Upcoming Repair Cafés 2023: 1pm – 4pm on June 10th and July 8th.



Positive + Resilient + Together

Thinking about car sharing?

Save money and reduce your carbon footprint, in one easy move.

A local resident got in touch with us to tell us how combining with a “Buddi” to share car journeys had saved them both “an absolute fortune”. Initial contact was via the site Liftshare, <https://liftshare.com/uk>. There’s no obligation, just enter details of a journey, regular or infrequent, that you would be interested to share, and see what comes up. You can accept or decline a potential Buddi.

Simple things like this make us more resilient as a community and as a society. If you are interested in joining our group and helping to make our area a better place to live, in whatever way, big or small, please contact us via email posicrp@gmail.com or phone 07768 130520. **Follow Us:** Intagram: togetherproject2022

MILLENNIUM HOUSE



YOGA FOR EVERYONE

At Millennium
House,
Pensilva.
tel. 01579 363096

MONDAYS FROM **5:30pm** with Laura,
And WEDNESDAYS from **6:30pm** with Alexis.
£7 per class. Must bring your own yoga mat.



Tamar Area Prostate Support (TAPS)

DON'T IGNORE THE SIGNS

- A need to urinate frequently especially at night
- Difficulty in starting to pee
- Weak flow
- Feeling that your bladder has not emptied fully

**Come and join us on the first Tuesday of the Month
10.00 at the Compton Park Engine House Callington
for a friendly chat and a coffee.**



Paul Mansell 01822 832179 Harry Lawson 01579 383258 John Stewart 01822 833343
Stephen Williams 07735 389883 Albert Doidge 01822 832471
Or email tapsinfo555@gmail.com

MILLENNIUM HOUSE

COMMUNITY CENTRE, AND DYNAMIC EVENT
VENUE IN THE HEART OF EAST CORNWALL



Conferencing

We have four meeting rooms for all your corporate needs.



Function Room

For parties, discos, or just larger events; with adjoining kitchen and bar.

Our Facilities

Sports Hall

For sports or larger events requiring a stage, the sports hall is our biggest venue.



Coffee Shop

Providing tea, coffee and cake. And for something stronger, there's the Mel, a licensed bar.



Enquire today:
01579 363096

www.millenniumhouse.org.uk
PRINCESS ROAD, PENSILVA, PL14 5NF

What Do We Do?

From wedding to wakes, kids or adults, corporate or community, we can host and cater your event. If you have an idea that's not covered here, get in touch and see if we're the right venue for you.

We're also home to:

- ✓ The Mel bar
- ✓ All Being Well Fitness Centre
- ✓ Post Office
- ✓ Sunflower Park kids playground
- ✓ Extensive playing fields
- ✓ Community Library



Millennium House Community Transport

Do you require transport to and from the doctor's or hospital?

Our Parish has a number of volunteer drivers who have agreed to continue to help those who do not have transport, by using their own vehicles to help those in need.

Millennium House Community Transport's aim is to connect local communities and reduce social isolation.

If you would like to volunteer as a driver, or if you require transport to hospital, doctor's or vaccination, and have mobility issues, or are unable to drive to your appointment: **please contact Marlene on 01579 362919 or 07896 994947** and we will endeavour to help.

Badminton at Millennium House

Come and join our relaxed and friendly group.

Mon & Tue 7:30 - 9:30pm

For further info phone Nigel or Carol on 01579 363594 or 07885 798370

PENSILVA VILLAGE HALL

We are now open and back in business!

Anyone wishing to book the hall for meetings, birthday parties or fundraisers, please contact Peter or Jackie Browning on **01579 363212** or email **peterpensilva@gmail.com**



Please note that as well as hall rent there is a coin meter for heating at 60p/hr.

MOBILE LIBRARY



The County Mobile Library visits our area every four weeks, always on a Friday. You can now browse the shelves again, but you can still pre-order books if you prefer.

Next visits: May 5th, 2nd & 30th June, 28th July, 25th August.

Stops at The Victoria Inn, Pensilva from 10.25 to 10.45am; and Quethiock bus stop from 11.00 to 11.25am.



Struggling with Sight Loss?

iSight Cornwall offers practical help to people living with sight loss in Cornwall including:

Low Vision: Advice for low vision aids

Assistive Technology: Advice on products

Benefits Advice: Assistance to claim entitlements

Equipment Demonstration: Advice on gadgets

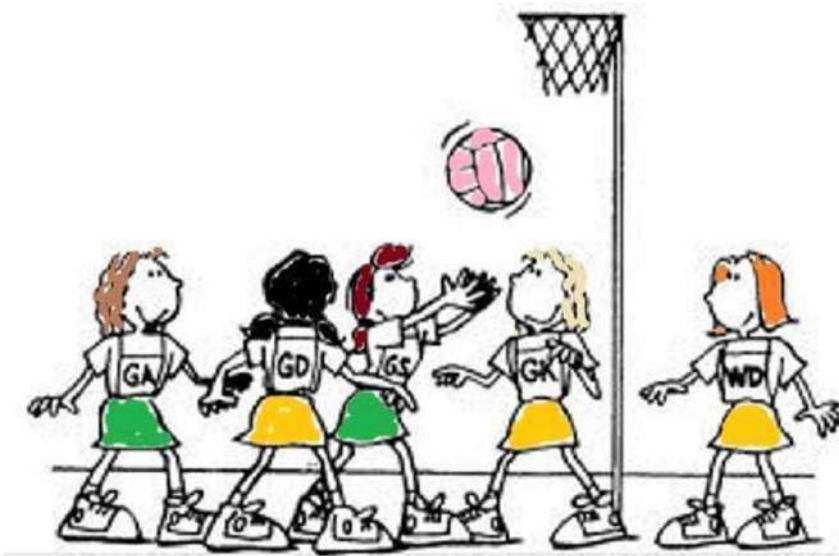
Social Clubs & Activities: Links to clubs & activities in the county

For more details Telephone 01872 261110 or visit

www.isightcornwall.org.uk

Ever tried...
Ladies Walking Netball?

Come along to Millennium House, Pensilva



Thursdays
4.00pm - 5.00pm

£2 per session

**For further info contact rosemaryfarley@gmail.com
or Tel. No. 01579 384810**

All Being Well

We are still open for three mornings a week. A maximum of six members can now attend at one time.

Opening hours:

Monday, Wednesday and Saturday, 9am to 1pm.

Maximum six members at a time for each of three slots within each session: 9:00 to 10:20, 10:20 to 11:40 and 11:40 to 13:00

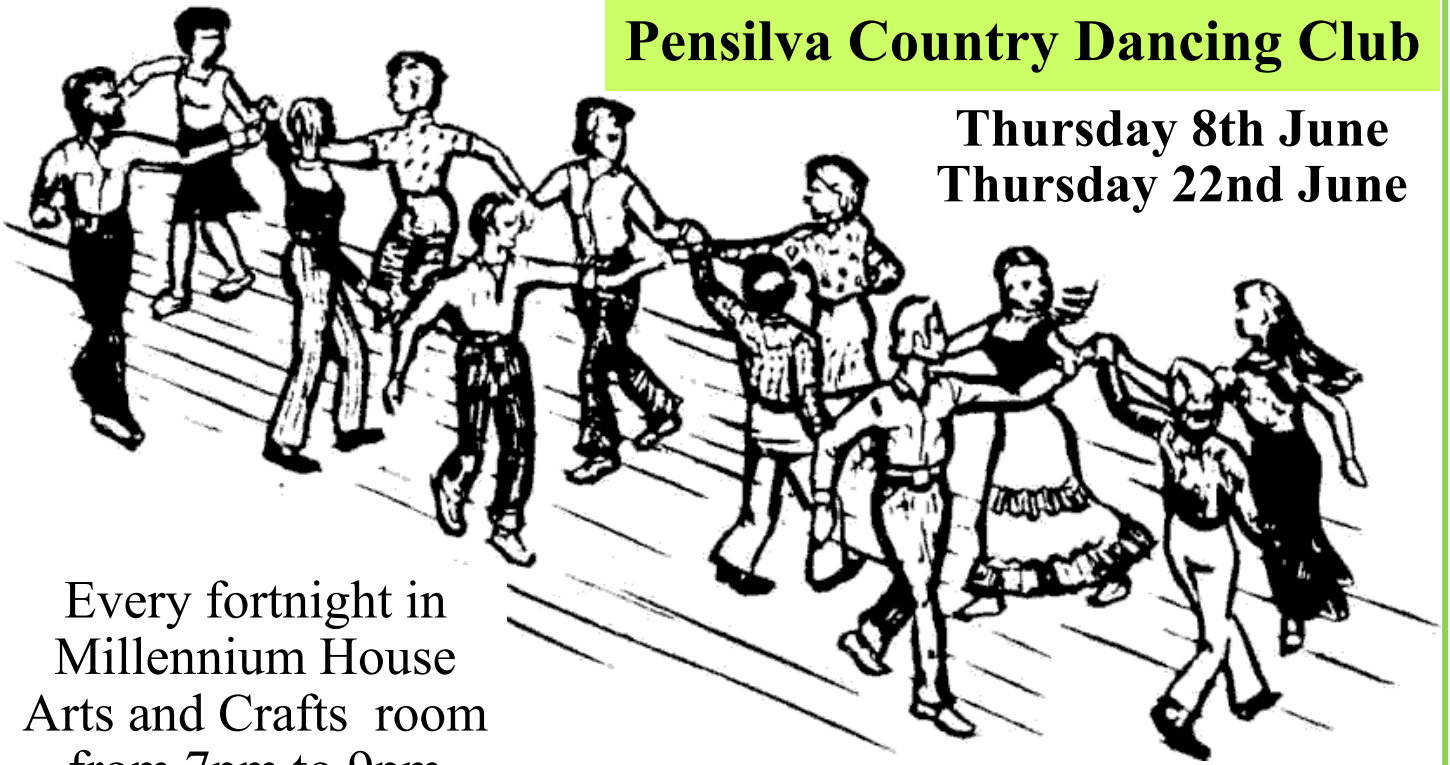
Prior booking is essential

To book yourself in or for any enquiries, call in at the gym or telephone on **01579 363890**, during the opening hours listed above.

22 years working in our local community to improve health, fitness and well being.

Pensilva Country Dancing Club

Thursday 8th June
Thursday 22nd June



Every fortnight in
Millennium House
Arts and Crafts room
from 7pm to 9pm

For information ring Frances 01579 363718

Action for
Children

YOUTH GROUP
FOR 11-19 YEAR OLDS
UP TO 25 YEAR OLD WITH SEND.



EVERY FRIDAY 5:00 TO 7:00 PM

FREE OF CHARGE & OPEN TO ALL

VENUE: MILLENNIUM HOUSE, PENSILVA, LISKEARD PL14 5NF

ACTIVITIES, DRINKS/SNACKS, & A CHANCE TO HELP BUILD A
YOUTH LEAD GROUP IN YOUR AREA.

FIND OUT ABOUT US @:

WWW.SERVICES.ACTIONFORCHILDREN.ORG.UK/KERNOWCONNECT

Bargain Corner Free Ads up to £50

Ads are free for items up to £50. £5 charge for items over £50. Please leave a note at Millennium House reception, ring the Parish Office on **01579 363096**, or email **parishpump@btconnect.com**.

***** Please let us know when your item has sold *****

Brand new, never used, **temporary spare wheel**. T115/70 R16 92^M. 17 inch, 4 holes, **£50. 01579 362846**.

Snooker Table, 5ft x 2ft 6ins, incl. 2 cues & chalk, full set of snooker balls, scoreboard, & table brush. G.C. **£30 ono. 01579 362594**
(Wrong phone no. last month - Sorry!)

Portable gas fire + full gas bottle. **£40**. **Electric hedge trimmer** **£15**. **Oil-filled radiator** **£10**. **Sack truck** **£10**. **Ratchet tree lopper** **£10**. **New drain rods** **£15**. **All for sale due to downsizing**.
Phone Les on **07926 627291** Pensilva.

Childs Car Seat. GRACO Nautilus Groups 1, 2 and 3. To fit ages 9 months to 12 years. VGC. Occasional use only. Complete w/ Owners Manual. **£35**.
Tel 01579 362164

Stretched canvases on wood frames. No longer needed.: Two, 120x150cm **£20 each**. Four, in orig. shrinkwrap, 100x80cm **£15 each**. Suitable for Acrylic or Oils. Offers considered.
07887 787202 Pensilva..

ABBA albums, £3 each.
Box set Rolling Stones albums, £20.
01579 363363

Kirsty exercise bike. £50 o.n.o (in aid of charity). Can deliver in Pensilva area.
01579 363833

Winter Warm down flow **fan heater**. Model WWDF20. **£18**.
Epson Stylist **printer**. Model SX130. **£12**.
01579 347403.

Car roof box. Opens both sides. Only used once. Full instr's. L 2300mm W 820mm H 360mm. **£50. 01579 362217**.

Axminster 2 speed forward and reverse **drill**, in GWO **£10** and a **Power Planer** PPL800 - 800W in GWO requires a new blade **£10** or **£15** for the two items.

2 Empty Dewalt Tool Cases, 1 general tool box with free Dewalt cordless drill no battery. **£30**.

10 wooden **moulding planes** Usable cond. 1 wooden spirit level & scribe. **£50**.

Six coils of **industrial steel cable** now surplus to requirements **£35** the lot.

New 12'x3'1" good quality hard **vinyl flooring**, light/med brown wood effect **£15**.
01579 384658 (Safe Distancing if reqd.)

Ladies Rocketdog wedge **flipflops** black with red and mixed colour beads on material, size 5. still in box as new paid **£10**.
Upton Cross/Minions 07368 528398.

Please let us know when your items have sold.

ADVERTISING SECTION

TO OUR ADVERTISERS: Firstly, thank you for advertising in the St Ive Parish Pump. Your support enables us to provide a much-valued monthly newsletter to our parishioners, while also giving businesses in our area affordable access to a sizeable local market of grateful consumers.

New advertisers are asked to pay in advance. Advertisers who are behind with their payments will have their adverts removed from subsequent editions until payments are brought up to date.

Advertising prices:	<u>Net of VAT</u>		<u>Including VAT</u>	
	<u>1 month</u>	<u>12 months</u>	<u>1 month</u>	<u>12 months</u>
Quarter Page:	£ 8.33	£83.33	£10.00	£100.00
Half Page:	£ 16.67	£167.67	£20.00	£200.00
Full Page:	£ 27.50	£275.00	£33.00	£330.00

Thank you, once again, for advertising in our newsletter. We hope that you will continue to do so, and we wish you every success with your business.



Group Travel

Day Trips & Coach Holidays

Enterprise Park, Midway Road, Bodmin, Cornwall PL31 2FQ Tel: 01208 77989

Coach Excursions & Tours 2023

Tue 13th June	Hestercombe House & Gardens
Tue 27th June	Train from Paignton to Kingswear & Cruise Dartmouth to Totnes
Tue 11th July	Exmouth & River Cruise to Exeter
17th - 21st July	Visit Bournemouth
18th August	RHS Rosemoor Gardens Flower Show
1st - 3rd Sept	Burghley Horse Trials
24th - 30th Sept	Cairngorms, Scotland
11th October	Goosey Fair, Tavistock
4th November	Bridgwater Carnival
24th - 27th Nov	Turkey & Tinsel, Ilfracombe, North Devon
2nd December	Clarks Shopping Village

Visit our website for all our excursions & tours
and download a PDF version of our 2023 brochure.

Call: Dawn or Robin on 01208 77989 for bookings and brochure
website: www.grouptravelcoachhire.co.uk
email: grouptravelcornwall@btconnect.com

Bodmin MOT Centre

01208 77989

Garage Services
MOT Testing Station
Classes 4, 5 & 7
Servicing & Repairs
High Vehicles & Motorhomes
Brake Test & Headlight Alignment
Pre MOT Inspections
Annual & Interim Vehicle Servicing

Commercial interim inspections available
including brakes and lights

Helping you stay compliant

Bodmin MOT Centre
at Group Travel
Enterprise Park, Midway Road,
Bodmin, Cornwall PL31 2FQ

ADVERTISE

HERE!

This box for **just £33 per month** including VAT
(£27.50 net of VAT).

2 MONTHS FREE for a 12 month order.

i.e. **£27.50 per month** incl VAT for 12 months
(£22.92 net of VAT)

See the full tariff on page 3

One thousand copies per month
distributed free of charge to
households in the Parish of St Ive.



GENERAL GARDEN & HOUSE MAINTENANCE

NO JOB TOO SMALL

Call to discuss your requirements.
NO OBLIGATION quotes given.

One off jobs or regular work catered for.

Here are some examples...

OUTSIDE

MOWING

HEDGE CUTTING

FENCE PAINTING

BOARDER WEEDING

PATIOS & DRIVES

CLEANED

INSIDE

WINDOWS CLEANED
INSIDE & OUT.

PAINTING

CLEANING

SHOPPING

IRONING

CALL ANDREW CARLIN

now on:

07407 323888

Thank you.

Colin Swinburne
Electrical Services



All aspects of domestic and commercial electrical work.

Inspection and testing (EICRs), fault finding, new installations, rewires, consumer unit replacement, additional sockets, lighting upgrades, garden power and lighting, extractor fans and more.

Electrician in Pensilva. Free advice and quotes.



CSES@btinternet.com 07974499138



Right-on 
Plumbing &
Maintenance

Gareth Haines

Tel: 07947353682

Trystan Phillips



Carpentry/Joinery & Property Maintenance



35 Years' Experience

Fully Insured Including Public and Product Liability

All aspects of Carpentry undertaken including:

Bespoke Carpentry & Joinery , Kitchen Installations, Doors, Partitions, Skirtings, Architraves, Shelving, Timber Floors renewed & repaired, Laminate Floors fitted, Timber Windows repaired including 'Sliding Sash'. Plus General Property Maintenance, including Painting/Tiling & much more!

07397 153792 trystanphillips carpentry@gmail.com 01579 363150

Debbie's Care Services

Tel. 0777 948 3230

Hello, my name is Debbie. I am a local lady who has been working in the community for over 30 years.

I provide the following services and more!

- Assisting bathing / showering
- Preparation of meals
- Cleaning / Shopping / Ironing
- Companionship / Friendship and emotional support
- Assisting with mobility
- Day, Evening and Night Care

New, High-Quality, Local
Decorating Service

EDEN SERVICES



Interior / exterior decorating, including spraying

All work fully insured and guaranteed

References available

High quality work at sensible prices

Over 25 years experience

Call Julian for a free, no obligation quote

Mobile 07775 515036 Office 01579 641129

Find us online:
fresh_prop.co.uk



Top quality carpet, upholstery & hard floor
cleaning services based in Callington

Long-established cleaning professional

Domestic & commercial

NCCA qualified & member

Steam cleaning & dry carpet cleaning

Tile & grout + natural stone clean & seal

Vinyl & LVT including Amtico & Karndean

Call 0800 3893393 or 07905 188459

Or email nevil_fresh@msn.com

TRADITIONAL STONE SERVICES

CLASSIC & TIMELESS
STONE MASONRY
AND LETTERING

MEMORIAL CLEANING

COMMISSIONS TAKEN

01579 363693

OR

07507 782282



Domestic Electrical
Property Maintenance
Interior & Exterior Work
Carpentry :: Decking
Kitchens :: Bathrooms
Wall & Floor Tiling
General Plumbing

MCCARTHY PROPERTY MAINTENANCE

**Electrical Safety
Register**

incorporating
ELECTSA + ECA
Certification Ltd

HIGHLY REGARDED LOCAL BUILDER
COMPETITIVELY PRICED
COVERING THE SOUTH WEST

Contact Dominic

07968 599 675

01579 362 945

info@mccarthypropertymaintenance.co.uk

www.mccarthypropertymaintenance.co.uk



Maintaining and preserving our
countryside for the benefit of all

Dry Stone Walls

Cobblestoning

Stone faced walls

Hedgelaying/steeping

Land management

All aspects of Landscaping

Mobile: 07539 296799 or

Email: info@just-in-stone.co.uk

Westwood Garden Maintenance



Antony Watts

Grass Cutting, Clearance

Weeding, Turfing

Hedge Cutting

Patio Cleaning, Planting

Regular Visits / One-off Contracts

Residential & Commercial

FREE ESTIMATES

01579 362019 www.westwoodgm.co.uk 07952 094472

JPH Plastering and Rendering

Internal plastering

Internal and external rendering

Internal/external painting & decorating

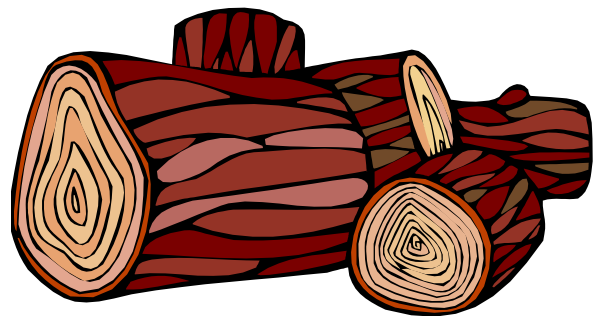
Property maintenance

Landscaping and land management

For estimates and no obligation quotes
contact Justin on:

07539 296799 or
info@just-in-stone.co.uk

SEASONED LOGS



MIXED LOAD

or

HARDWOOD

Tel. Jonathan

Mobile 07966 070725

or

01579 363157

PENROSS

Rosecraddock Lodge Holiday Bungalows

(Between Pensilva & Liskeard)

Perfect for family & friends coming to visit!



Sleeps 4

Sorry no pets or smoking

Tel: Julie 01579 362221

Email: penhargetfarm@gmail.com

NICOLA GREENE

BSc (hons) Podiatry MChs

HPC Registered Chiropodist/Podiatrist

**Home Visit Practice treating all
your foot care needs:**

- Nail Cutting
- Corns and Calluses
- Thickened Nails
- Dry Cracked Skin
- Verrucae
- Foot Pain
- Diabetic Foot Assessments
- Wound Care

T: 01579 590027

M: 07786164205

E: nicki_greene@yahoo.com

Matt's Windows

Repair of Windows, Doors & Glass Unit Replacement

Making draughty windows great again!

T: 01579 641228

M: 07533 387368



KV Accounting Solutions

ACCA

Local Accountant offering fixed fee accounting services

With over 20 years experience, I am a fully qualified, friendly, local accountant

- ✓ Annual Accounts for Sole Traders and Partnerships
- ✓ Book Keeping & Payroll
- ✓ Personal Tax Planning
- ✓ Company Accounts
- ✓ Business Support & Advice
- ✓ Self Assessment tax returns
- ✓ iXBRL tax filing
- ✓ Tax investigation Fees Insurance
- ✓ Company Secretarial work
- ✓ Tax calculations for Sole Traders and Partnerships

Kate Vaughnley FCCA - Chartered Certified Accountant

Website : www.kvaccountingsolutions.co.uk or Email : katevaughnley@gmail.com

Telephone : 01579 364083



BA

Gas Services

NATURAL GAS - LPG - OIL

BOILER INSTALLATION

BOILER SERVICE & REPAIR

LONG WARRANTY FREE QUOTES

07859848288

bagasservices@outlook.com

533335

GAS
safe
REGISTER



Kiln Dried Firewood
Kindling & Firelighters
Eco Heatlogs
LPG Bottled Gas
Patio, BBQ & Camping Gas
Coal & Smokeless Fuel



0800 8021 223
sales@loganslogs.co.uk
www.loganslogs.co.uk

Heel 2 Toe Footcare

Tired Aching feet.

Corns, Hard skin, Verruca.

Fungal infected toe nails, or
toe nails require cutting.

Diabetic feet also treated and
regularly checked.

I can help to keep your feet
looking and feeling good.

I am a trained Foot Health
Practitioner to Diploma Level, fully
insured & DBS checked.

I can do home visits via an
appointment.

Call Penny: **07746 926146** for
further information. **Please note
new number May 2021.**

J. J. Child

Plumbing and heating engineer.

Oil appliance service, repair and breakdowns.

Over 30 years experience

Call John: 01579 362336 or 07837 921086



PMB Book Keeping

Friendly Book Keeping Services:

Purchase and Sales Ledger
Bank Reconciliations
VAT returns - Making Tax Digital
Self Assessment Tax Returns
And More

Fully Qualified, Insured and
Licenced

T: 01579 683624

E: pmboutsourcing@outlook.com



Fencing
Paths & Steps
Turf & Astro turf
Driveways
Retaining walls
Digger work
Footings & foundations

Patios
Rendering
Decking

And more

Free no obligation quotes

Call Rob on:

**07518246666 or
01579 641802**

Debbie Hicks - Counselling and Psychotherapy

Caring, confidential counselling for all.

*I work in a therapeutic relationship to
help you understand yourself better.*

*I offer a warm, approachable, relaxed
environment for you to untangle your
thoughts and emotions.*

www.debbiehickscounselling.co.uk

Email: debbiehicks10@gmail.com

07851 133782

*More info on my
website or by
contacting me.*



Window Cleaner Window Cleaner

Also any upvc cleaned

i.e. fascias, gutters, etc.

gutters cleared & unblocked

Please phone Rob

07709 053464

Window Cleaner Window Cleaner

INDEPENDENT FAMILY FUNERAL DIRECTORS

Supporting families to arrange funerals with sensitivity, dignity and care.

- Flexible, caring approach, tailor-making funerals to suit your needs and budget.
- Open and transparent, affordable pricing.
- Free bereavement support sessions, open to all in our community, first Wednesday of the month, 10am - 12pm.
- Prepayment Funeral Plans available

For details of our services and prices, visit our website.



01579 362358 | www.fdhallfunerals.co.uk



Avalennek, Caradon Town,
Upton Cross, Liskeard
Cornwall PL14 5AR
Telephone 01579 363598
Mobile 07901 538132
chrisrounsevell@tiscali.co.uk

HOG ROAST EQUIPMENT HIRE AND MEAT SUPPLY

Hog Roasts For Those Special Occasions
Self Catering or Hassle Free Service
Everything done to your special requirements

CHRIS ROUNSEVELL
TRADITIONAL BUTCHER

Come and visit our recently updated
Tile & Bathroom showroom in PENSILVA

We offer a generous discount to all Pump Readers

Unit 24 Pensilva Ind Est, St Ive Road, Cornwall PL14 5RE 01579 362264



CORNWALL TILE
CENTRE

Pensilva Showroom

Open Mon - Fri 8.30am - 5pm
Saturday 9.00am - 1pm

Tiles & Mosaics for:

Bathrooms & Kitchens Living Areas Conservatories
Patios & External Areas Wet Rooms & Spas Swimming Pools
& All Commercial Applications

 atlas concorde

www.cornwalltile.com

OPEN FOR RETAIL, TRADE & COMMERCIAL ENQUIRIES



THE HOME OF WOOD

BULK DISCOUNTS AVAILABLE ON OUR 30 YEAR SERVICE LIFE POSTS



OUR GOLD TREATED STAKES AND POSTS ARE THE ONLY ONES AVAILABLE IN THE UK THAT ARE APPROVED BY THE WPA BENCHMARK FOR 30 YEAR SERVICE LIFE

For more information please contact one of our team



Bond Timber, Bake Sawmill, Trerulefoot, Saltash, Cornwall,

PL12 5BW

01503 240 308 stacy@whbond.co.uk

Pensilva Stores

Amazing Value

Premier
a great deal more from your local store
Mon-Sat. 7:00 AM. - 9:30 PM.
Sunday 8.00 AM. - 9:30 PM.

- ✓ Fantastic Special Offers every month!!! (See store leaflets)
- ✓ Come and Check out our great deals on Wine, Beer and Spirits
- ✓ Local Produce: Homemade Butter and Clotted Cream, Meat from our local butcher
- ✓ Cornish Fresh Fruit and Vegetables
- ✓ Fresh Bread, Pasties and Cakes
- ✓ Take Away Coffee, tea and hot chocolate
- ✓ Newspapers and Magazines, Greeting Cards
- ✓ Paypoint, Lottery

* **Free to use ATM** *

* **Card Payment** *

Friendly Staff + Service with a Smile !!!

Pensilva Stores is a family run business who have been serving local people and visitors for more than 21 years.

Higher Road, Pensilva, Liskeard, Cornwall PL14 5NQ

Tel: 01579 362547

MENDOLOGY

Garage Door Specialist

- Repairs
- Servicing
- Installations


Out of hours service
call Dave anytime 07974 442645

MENDOLOGY COMMERCIAL DOORS LTD
www.mendologydoors.co.uk

01579 363760

PensilvaCars

01579 363516

- ✓ MOTs Class 4
- ✓ Service
- ✓ Repair
- ✓ Tyres
- ✓ FREE Courtesy Car
- ✓ Car & Van Sales
- ✓ Diagnostics
- ✓ Air Conditioning
- ✓ 

We have offered a supply, fit & balance of tyre service for 10 years at competitive prices.

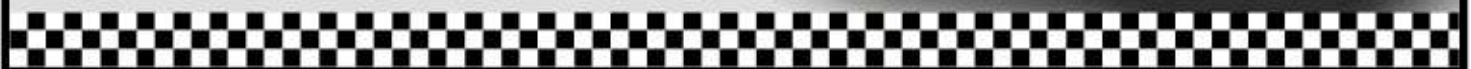
Most of our tyres can be supplied the same day.

LOCAL RECOVERY £45.00

www.pensilvacars.co.uk

pensilvacars@hotmail.co.uk

We can service and repair your car to manufacturer specification, keeping your dealer warranty without main dealer expense.





Pensilva & St Ive Post Office Service

Pensilva: Through the coffee shop on the 1st floor of Millennium House

Tuesdays: 9am to 1pm.

Wednesdays: 9am to 12 noon.

Fridays: 9am to 12 noon

**The Millennium House
coffee shop is also open on
these mornings.**

.....

St Ive: At St Ive Village Hall

Wednesdays: 10:30 to 11:30am

**Coincides with the St Ive
Village Hall Coffee Morning**

Saint Ive Parish tree-planting survey

Please let us know about any trees that you plant within the Parish. We will include them in our own survey and we will notify the Forest for Cornwall on your behalf, if appropriate.

email posicrp@gmail.com or message us on Facebook

www.facebook.com/posicrp or phone 01579 364016.

Pictures very welcome.

