

THE PARISH PUMP



May 2023
Edition 498



The Newsletter for the Parish of St Ives



A work day at the community garden in St Ives.
Feeding the trees with compost generated on-site.

Disclaimer

The articles appearing in this magazine do not necessarily reflect the views of the Parish Council nor of the Parish Pump Editor.

Parish Councillors Telephone List

Alan Moss (chair)	01579 362064	Marlene Carr (vice-chair)	01579 362919
James Bruce	07411 192645	Martin Corney	01579 382450
Sandra Doe	01579 363096	Rosemary Farley	01579 384810
Nigel Gisby	01579 363096	Tony Hodson	07973 536964
Nigel Libby	07968 891814	Paul Mann	01579 363757
Patricia Steer	01579 363096	Ivor Vaughan	07979 934604
Craig Vaughnley	01579 364083		
Sharon Daw (Cornwall Councillor) 07837 379305 slash.dash.daw@gmail.com			

Meetings of St Ive Parish Council

Meetings are now being held on the 2nd Monday of the month except August and December when no meetings are held. Please see the Parish Council website for meeting dates, agendas and minutes.

<http://st-ive-parishcouncil.gov.uk/minutes-agendas/>



Devon & Cornwall Police
Building safer communities together

 **101**

Minicom 18001 101

Police Community Neighbourhood Office

Your Community Support Officer is PCSO Steve Edser 30173.

email: CIOSNBMLLST@devonandcornwall.pnn.police.uk

To report a crime call 101 or go to www.devon-cornwall.police.uk

In an emergency call 999

Contact details for St. Ive Parish Council and for Millennium House

Address for correspondence: Millennium House, Century Square, Pensilva PL14 5NF

General Parish matters should be raised initially with the Parish Clerk, Jenny Hoskin, who will present them to the Parish Council.

Telephone: 01579 363096, email: stiveparish@btconnect.com

For accounts matters for the Parish and for Millennium House contact John Body, Finance Officer: 01579 362102, email: millenniumhouseadmin@btconnect.com

Millennium House enquiries and reservations: 01579 363096

email: millenniumhouse@btconnect.com.

On the web: Millennium House Website: www.cornwallvenue.com

Parish website: st-ive-parishcouncil.gov.uk Facebook: facebook.com/stiveparishcouncil

PARISH PUMP ADVERTISING COSTS

The prices for advertising in the Parish Pump are as follows:

The below prices include VAT at 20%:

Quarter page: £10:00 per month or £100:00 for 12 months.

Half Page: £20:00 per month or £200:00 for 12 months.

Full Page: £33:00 per month or £330:00 for 12 months.

Parish Pump Information and Contact Details

To contact the editor please email: parishpump@btconnect.com

or phone the Parish office: **01579 363096**.

Hardcopy submissions by post or by hand to the Parish office, Millennium House, or Millennium House reception.

Softcopy submissions: By email to the editor in MS Word, MS Publisher, pdf, Tiff or jpeg. Please use A4 pages and minimum 16 point font as the Pump is initially produced in A4 size and reduced to an A5 booklet at the printing stage. If in doubt please contact the editor.

Bargain Corner free ads by email to the editor or drop off at the Parish Office.

From the Editor

The Parish Council planning meeting held on April 4th considered the outline application for 46 new dwellings on land between Amanda Way and Pensilva Industrial estate.

A good number of members of the public filled the Function Room at Millennium House, including the applicant, who attended in person. She explained that, prior to submitting the application, she had consulted with Cornwall Council regarding what type of development would be most appropriate for the needs of the local area. The reply from Truro was that the need was for affordable housing, and the application was then structured to meet that need.

At the April 4th meeting, supporters of the application mostly stressed the point that kids who grow up in Pensilva generally cannot afford to live in Pensilva when they start to look for their own place. The proposed development would help remedy that.

Opposition to the application mainly related to access, and the Chair of the planning committee explained that the majority of the documents under consideration relate to access and, in particular, pedestrian access. Even though changes had been made since the previous application, several members of the public made the point that people making their way on foot from the new development to the school, or surgery, or community centre, would have to cross a dangerous road on a blind bend. Also that, in places, there was no pavement to walk on. While this is also true for current residents of Amanda Way and other houses nearby, an increase in numbers would inevitably imply an increased risk of serious accidents. The Highways Authority had raised an objection along those lines.

In the end, it was decided that the Parish Council would oppose the application on the grounds that the pedestrian access question was not yet fully resolved.

Despite the fact that a lot of people obviously felt strongly about the issues, most of the discussion was conducted in a civilised and reasonable way. I was disappointed that there were one or two who allowed themselves to make disrespectful and personal attacks, but maybe that's just me.

That's it for this month!

Joe

COMMUNITY COFFEE SHOP MILLENNIUM HOUSE PENSILVA COMMUNITY COFFEE SHOP MILLENNIUM HOUSE, PENSILVA

**We are open Tuesdays, Wednesdays and Fridays
9.a.m. to 1.p.m. (to coincide with the Post Office).**

We, the volunteers, opened the Coffee Shop in 2017 with the hope of giving something back to the community. The atmosphere is relaxed, making it an ideal place to enjoy meeting up with friends for a cuppa and a chat. A warm welcome is assured.

We would like to say a huge 'Thank You' for your continued support.

Opening times for the Mel Bar at Millennium House

Sunday	12 Noon-5 pm	Monday	Closed
Tuesday	7-11 pm	Wednesday	5-11 pm
Thursday	5-11 pm	Friday	5-11 pm
Saturday	5-11 pm (from 2pm for Pensilva football 1st team home games)		



Time for a clear out !

We can now accept damaged **TOYS & GAMES** to be broken down & recycled and make money for charity. Dog eared cards and board games, jigsaws, puzzles and colouring books, musical items, odd bits and pieces.

Pull it out and bring to the layby beside St Johns church, Pensilva, when our trailer pulls in on

Friday MAY 7th at 12noon.

Thank you for your support. Ali 07305 044049
www.South-Hill.co.uk/CHARITY-RECYCLING

From the Millennium House manager.

Hi Parish Pump Readers,

Firstly, thank you to everyone for the wedding well wishes and marriage advice! It has been noted :) While we celebrated, I heard you all had a great time at the Golden Oldies Disco, with thanks to DJ Bezzah from Ember Entertainment! We will have more discos throughout the year! Thank you to all who attended our Community Fair, I hope you found it informative and helpful. There is so much in our community and we should be a part of it.

What an amazing performance from the bands we had in April, Dew Barf and Mind Your Manners. Thanks to the Events group for organising! It was a great turn out from everyone and we have more in store for you this month!

The King's Coronation is upon us and we hope you have made yourselves available to join us to celebrate the King's Coronation!

Showing of King's Coronation Live - Saturday 6th May 2023 from 11am

King's Coronation Craft Session - Saturday 6th May 2023 from 11am

Josh Taylor Band - Saturday 6th May 2023 from 8pm

King's Coronation Craft Fair - Sunday 7th May 2023 from 10am to 3pm

King's Coronation Craft Session - Sunday 7th May 2023 from 10am

King's Coronation BIG LUNCH - Sunday 7th May 2023 from 2pm to 4pm

Slimming World has been such a hit on Friday evenings. We will also be holding Saturday morning sessions starting from Saturday 6th May 2023 from 8am for the first meeting and 9.30am for the second meeting.

We have the Lego Club starting on Saturday 13th May 2023 from 9.30am to 11.30am. Let's support the pre-school. They will be holding the Lego Club every 2nd Saturday of the Month at Millennium House, all ages are welcome!

It is Millennium House's 25th Birthday on Monday 1st May 2023! The bar will be open from 12pm to 6pm with games and food to celebrate turning 25! All are welcome.

Dates are getting booked up for functions and events, contact us to get your birthday, anniversary, wedding or any other celebration or event booked in. Call 01579363096 or email ness.mhouse@gmail.com

Have a magical May!

Vanessa

St. Ive Village Hall PL14 3LZ

HALL HIRE - £5 an hour

Includes the use of kitchen and electric
(except wall heaters which are on a coin meter).
For bookings ring Beth: 01579 382066 or 07476 156659

Regular Group and Activity Timetable

Parent and Baby drop in	Mondays (term time only) 10am to midday	Beth: 01579 382066 or Amanda: 07703 393070
Gardening Club	1st Monday monthly 7:30pm	01579 382762
St Ive Snooker Club	Mondays & Thursdays 7:00pm	01579 382315 R Bunkum
Mobile Post Office	Wednesday 10:30 - 11:30 am	
Coffee Morning	Wednesday 10:30 - noon	
Methodist Church Sunday Service	Check timetable in Parish Pump for services	Katherine or Keith Mutton 01579 382334

St Ive Village Hall. Programme

Parent and Baby Drop-in. Mondays 10am to midday

A warm, dry space for parents, childminders and friends to meet up with small children. £3 per adult, incl. drink & biscuit.

King Charles Coronation Celebrations. Sunday May 7th.

3pm to 5pm. Afternoon Barbeque / Tea and cakes. In the village hall and on the patio. Raffle.

BINGO. Saturday July 1st, 7pm for 7:30pm eyes down.

Refreshments available, or bring your own bottle. Raffle.

St. Ive Village Horticultural Show. Fri/Sat 1st/2nd Sept.

Cups & Rosettes. 50p per entry. Free for children. Refreshments and raffle. More details & schedule to follow.

Spooky Hall Family overnight camp-in. Sat. Oct. 21.

8pm to 8am. £5 per person. Games, children's bingo, supper, hot chocolate, breakfast incl. Children must be accompanied.

Christmas Wreath Making. Sat. 25th November. £20.

Bookings taken. Very popular last year. Refreshments incl.

To book places or for more info, call Beth:
01579 382066 or (mobile) 07476 156659

BAKED POTATO



LUNCH

BRING and BUY STALL
St John's Church

Pensilva

Thursday 4th May

12.00 to 1.30 pm

Donations to support church work in our community



Over the last few months you may have heard rumours about a new community farm in Pensilva opposite Pentiddy Community Woodland - they're true and it's all go!

This is our vision: ***A small, abundant farm and gathering space that has the health and well-being of the local community, the land and its wildlife at the heart. A place where we will connect, learn and work together to discover what it is we each have to offer to help build a better, fairer world for generations to come.***

Tregovenek (meaning 'a place of hope' in Cornish) is well under-way although much of the work is still behind the scenes. There is a great team of people working away to create good solid foundations of values, principles and policies to build on to. The design of the land is at the draft stage, funding applications are going in, connections are being made and ideas are forming. Volunteers have also been clearing the land and bring the once-thriving market garden back into production.

We're now feeling ready to welcome more people in to get involved in a whole range of ways. If working with local people to grow food and build a stronger community appeals to you, then please come and say hello! There's a role for everyone. No experience is needed, just a willingness to learn together.

There are a couple of small events coming up which would be a good way to meet people and find out what Tregovenek is about.:

May 5th 7:30 - 9:30pm. A presentation of the draft design. This will be a good chance to hear about the plans for the farm, to input your suggestions and to offer feedback on the design so far.

May 13th and 14th 10am - 1pm. Work parties. Come and work in the garden and generally help out around the land. We will start in the barn at 10am with a short meeting before beginning work, then we'll stop for a shared lunch at 12:30. Please bring food to share and gardening tools if you have them.

If you'd like to be kept up-to-date about what's going on there is a newsletter you can subscribe to from the website which is www.tregovenek.org.uk.

You can also follow us on facebook and instagram @tregovenek (although someone to help with social media is on our wish list so for now there is not much being posted!)

Absolutely Everyone is Welcome!



Coronation Craft Fair

10am-3pm.

Raffle and stalls.

THEN JOIN US FOR




THE BIG LUNCH



2-4pm - bring a picnic.
Tea and coffee available

**Sunday 7th May
at Millennium House**



King Charles Coronation

Let's celebrate

Sunday 7th May, 23

Time 3pm until 5pm

Village Hall, St. Ive, PL14 3LZ

B.B.Q.

Raffle

Everybody Welcome

Teatime Church



For children and their families

Sunday 7th May
3.45 pm
St Cleer
Parish Church

Sunday 21st May
3.45 pm
St John's Church
Pensilva

Sharing a Bible Story

Playing Games

Singing and Praying Together

Eating Tea



For more information contact: Rev Li Selman revliselman@icloud.com

christian
aid

Donations for
Christian Aid
We believe in life before death

Bluebell Walk

Tuesday 16th May
Leaving at 6.30 pm from
Penharget Cottage
Pensilva
PL14 5RJ



Pasty Supper
Raffle
Bring & Buy

We can grieve for many reasons:
the death of a friend or relative;
the diagnosis of a friend or relative
with dementia or a terminal illness;
the loss or illness of a pet;
the loss of a job;
homelessness;
loss of mobility or driving licence;
closure of your Church or Chapel;
loss of freedom;
the closing of a support group;
the loss of stability in society.

Any of these can cause us to
grieve, so the Good Grief Cafe is
for anyone who is grieving in any
of these ways and no doubt
there are others too.

So please feel free to come along
and eat our cake, drink our tea
and just chat if you want to,
or just listen if you don't.

All are welcome.

Please use this as an opportunity
to invite someone to
come with you.

Good Grief Cafe



St Johns Church Pensilva

Wednesday 17th May 3.00 to 5.00 pm

For further information, contact Geoff 01579 362698

Pensilva



MemoryCafé

Thursday 25th May
2.00 to 4.00 pm

If you have memory problems or you are a carer for somebody who does and would like to meet others who understand your situation then join us at St John's Church Pensilva

Contact Geoff 01579 362698

Raising money for families one scone at a time

THE BIG SOUTH WEST
cream tea
children's hospice SOUTH WEST

Thank you

Friday 30 June 2023 is National Cream Tea Day!

To celebrate, each of our hospices are holding cream teas for the families we support. Join us by hosting your own cream tea to help raise vital funds for children and young people living with life-limiting conditions.



Register for your free fundraising pack www.chsw.org.uk/creamtea



Making the most of short and precious lives across the South West
Registered Charity No. 1003314





St Ive & District Gardening Club



Plant sale

Saturday 27th May 2023

1:30pm

Bring any cuttings, seedlings, plants etc from 11:00am

St Ive Village Hall (PL14 3LZ)

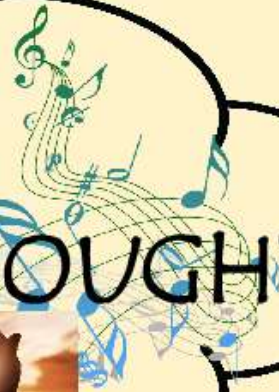
Get your homegrown seedlings, cuttings, vegetable
plants, flowering plants and...

...refreshments





FOOD for THOUGHT



SUNDAY

28th

May

5.00 PM

St John's Church
Pensilva

A time of fellowship
and informal worship
with a shared afternoon tea



For further information
& to arrange transport:
Geoff 01579 362698



stitch knit and natter

Do you enjoy stitching,
knitting, crocheting?

Join our friendly knit and natter group.
Come and meet new friends and swap tips
and ideas – all ages and abilities welcome!

Drop-in!

There is no charge
for this activity but there
is a donation for if you
would like to make a
cash contribution.

St John's
Church
Pensilva
on the
last Tuesday
of the month

2.00

to

4.00 pm

Contact Kathleen
01579 363686

Tuesday
30th
May

MILLENNIUM HOUSE EVENTS GROUP PRESENTS

£2
PER PERSON;
TEAMS OF
UP TO 8

QUIZ NIGHT



SATURDAY 10TH JUNE @7PM

FEATURING A RAFFLE IN AID OF BLOOD BIKES
HOSTED BY QUIZMASTER JOE BICARREGUI
AT MILLENNIUM HOUSE, PENSILVA

THIRTEEN+ YEARS OF WILDLIFE WATCHING IN THE PARISH OF ST. IVE

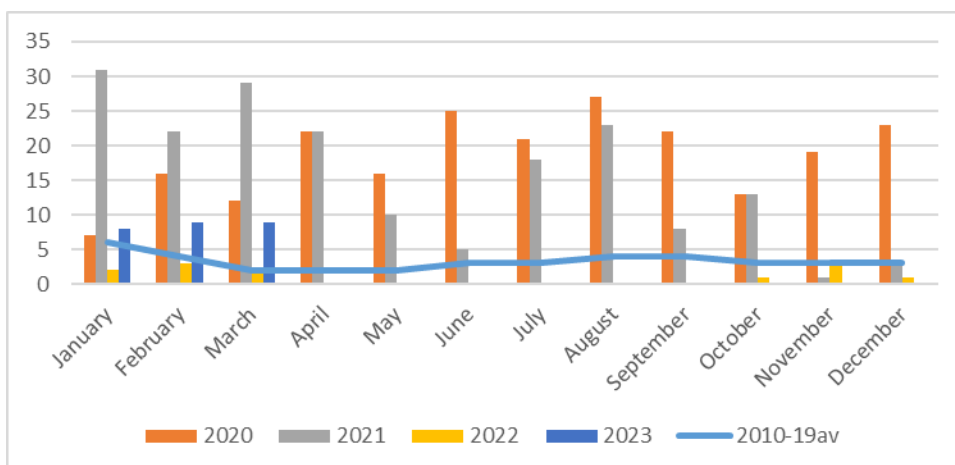
Since moving to the Parish at the end of 2009, I have been photographing and recording the wildlife which I see at my home on the edge of Pensilva on a daily basis. This month I will tell you a bit about a small mammal which comes to mop up the seeds under the bird feeder...

... THE BANK VOLE



I often catch glimpses of a small furry animal dashing across an open bit of ground. Probably most of these are bank voles and I'm convinced that our garden is riddled with their tunnels. However, I know it's them when they appear under the feeders dashing in and out of holes in the ground and walls. Sometimes they will stay out in the open on the steps for some time feeding - occasionally when we are sitting quietly with a cuppa at a little table less than a metre away!

We see bank voles throughout the year but last year we had a six month gap from April to September. But as you can see from the chart below, numbers have been gradually building up again since then.



Graph showing monthly bank vole numbers.



I suspect that sometimes numbers drop because one of them has been taken by either a sparrowhawk or a passing cat at that spot. This may lead to the next broods not being taken there, so leading to generations who do not know about this food-rich area until they stumble across it.

All voles have small eyes a short tail and a rounded snout. Bank voles are a chestnut brown colour and have larger ears than most voles, but smaller than those of a mouse. Their cousins, field voles (also known as short tailed voles), look very similar but have tails $\frac{1}{3}$ the length of their bodies whereas bank vole tails are $\frac{1}{2}$ their body length.

Bank voles live in woods, on farmland and on grassy areas where the grass is long, in fact anywhere which will give them cover from predators such as foxes, birds of prey and cats. They use their larger ears to hear predators coming and putting a bell on your cat will help to protect both rodents and birds. Basically they are a staple at the bottom end of the food chain. They themselves eat vegetation, roots, fungi, fruit, nuts, seeds and small insects.



As with all animals vulnerable to predation, producing as many offspring as possible in their short lives is imperative to the survival of the species. Females reach sexual maturity after 6 weeks, and males after 8. They can produce 3 or 4 litters of 3 to 5 young per year in shallow burrows. The breeding season can extend into the winter when the weather is mild enough. Both males and females are sometimes aggressive to other voles' litters, particularly where their territories overlap. The young are born hairless and blind and will be weaned at about 25 days old. We often see parents with their slightly smaller young under the feeders prior to the young leaving to fend for themselves.

Bank vole populations are deemed to be stable and not under threat. However they are heavily dependent on the right kind of habitat, so preserving and extending woods, hedgerows and rough grass areas is crucial to their continued success.

HAPPY WILDLIFE WATCHING - Hilary



Pensilva Film Club

Hi folks. I'm writing this before our April showing so no review this time, only a bit of a reminder about our film in May which will be "Living". This stars Bill Nighy (some say in one of his best roles) as an over-worked council officer who is given a life-limiting medical diagnosis. A local, vibrant woman makes him re-evaluate and try out new things before he finally sets out on a mission to leave something behind to benefit his local area. The Guardian reviewed this as "deeply felt and beautifully acted". You can make up your own mind by joining us on Fri 12 May – PLEASE NOTE CHANGE OF DATE.

Pensilva Film Club (Part of C-Fylm, Creative Kernow)

Presents: At Millennium House, Pensilva

Living

Friday, May 12th 2023 : 7pm for 7:30 start.

As usual doors open at 7pm for a 7.30 start and the Mel Bar will be open both before and after the showing. £3 entry for C-fylm members and £6 for those either renewing membership or joining (includes cost of this film).

Any questions please contact – Judy, 01579 208836 or judy.two@outlook.com
Pensilva Film Club – in association with C-fylm, part of Creative Kernow

PENSILVA RVS WEDNESDAY CLUB

We are happy to announce that the Wednesday Club will be re-starting as from 17th May 2023, 1.p.m. to 3.p.m.

Meetings will be held at Pensilva Village Hall - Entry £2.

Looking forward to meeting up with our original members and new members are welcome. For further info, please contact:

Cherry Woodhouse (Chairperson) 01579 363674

OR Marlene Carr (Secretary) 01579 362919



IMAGINE - CREATE - INSPIRE

made their roles redundant. Whilst Sterts looked to restructure the organisation, they managed the winter months and into the 2023 with a core of dedicated volunteers.

The charity was fortunate enough to have an incredibly patient and extensive list of creditors who got caught up in the spiral of misfortune that characterised some of last year. Sterts deeply regret the length of time it has taken to repay the debts, and in no small part the forbearance of the creditors has meant that Sterts is still here. It is with great pleasure the Trustees can now report that instructions are going out that they can all be paid fully in the coming days.

The Trustees are therefore delighted to report that the charity is through the worst and now has a very exciting future ahead. What has not been reported formally before now is that the beloved canopied theatre has been condemned and must come down, which is a great sadness, as it is a unique structure. But it has not weathered the storms. However the charity can forge ahead clear of all debt, with all creditors paid, and a sufficiently large sum of money to re-imagine the theatre.

The insurance settlement means that Sterts is in a position to start work on planning for a new theatre, and already work has been going on behind the scenes to see what could be constructed with the funds available, and what Planning at Cornwall Council will support. As the Chair only found out yesterday the nature of the settlement, and as trustees have yet to meet, it would be premature to say anything more. But the team are optimistic that all can get behind a new project which will engage the creativity of all who want to be involved. The Chair and Trustees wish to offer huge thanks to the team who have worked so hard on the insurance claim and to the trades who so swiftly responded to requests for estimates.

It is hoped to organise an autumn programme of performance, probably at venues other than Sterts, and to fundraise through a Supporters Club. Carry on abseiling!

There is a plan to hold an Extraordinary General Meeting as soon as the constitution allows, where the story of the last few months will be shared more fully, the members and Trustees can look at possibilities for the future, and above all, everyone will be asked to bring their imaginations to bear to see what can be done together.

Nick Hart, Chair of Trustees comments; "One of the privileges of being chair during this very turbulent time has been to begin to understand the strength of feeling that the community has towards Sterts. It is a truly vibrant and dynamic group of people, all with a determination to make a success of whatever fate throws in our path. A volunteer office professionally staffed, hugely active trustees, volunteers undertaking all sorts of activity in and around the site, and grounds looking wonderful as spring adds its magic. All is well with the world."

Late last year Sterts reported a cash flow problem which was severely limiting the ability to manage as the charity normally would. With great regret, Sterts had to inform their contracted staff that the charity could no longer afford to pay them, and

PENSILVA WOMENS' INSTITUTE

HORTICULTURAL SHOW

To be held in

Millennium House, Pensilva

On

Saturday 9th September 2023

To be opened at 2.15pm

By

PENSILVA SCHOOL HEADMASTER

MR. M. DAVIES

Please return cups awarded in 2022
to either Trish Thomas or Alison
Willis by Monday 14th August 2023.

Schedule of classes
on facing page.

HANDICRAFTS

SECTION 5 - OPEN

CLASS

62. Knitted or crocheted item
63. Item of needlework
64. Painting (any medium)
65. Item of sugarcraft or porcelain
66. Any other handicraft, not included in the above classes.
67. Any hand-made item incorporating red, white and blue

PHOTOGRAPHY

SECTION 6 – OPEN

CLASS

- | | | |
|-----|--|-------|
| 68. | Reflections in water | Print |
| 69. | An unusual tree | Print |
| 70. | A Royal photograph | Print |
| 71. | A Cornish bridge/viaduct | Print |
| 72. | Own Choice | Print |
| 73. | A digitally enhanced photograph
of one of the above classes | Print |

SECTION 7 – OPEN JUNIOR UNDER 15

CLASS

- | | | |
|-----|------------------|-------|
| 74. | My favourite toy | Print |
| 75. | At the beach | Print |
| 76. | Own choice | Print |

PRINTS MAY BE COLOUR OR BLACK & WHITE, NO LARGER THAN 7" X 5"/18 X 13CMS, MOUNTED ON WHITE CARD 8" X 6"/20 X 15CMS.

St Ive & District Gardening Club Report - April 2023

On Monday 3rd April we visited a private garden in Derrydown, Sparkwell. We were greeted by the owner & his daughter who explained due to the cold evening we would be enjoying our tea & cakes indoors.

As we walked around to the back of the house we saw a stunning view from the garden. The owner explained that he had lived there for 5 years & the garden backed onto a field with a golf course beyond. The garden was a simple, grassed slope. He didn't want to lose the view so he bought the field & extended his garden.

The start of the garden was raised bed made from old pavement slabs. The raised beds are full of fruit, vegetables and herbs. With all they grow, the owners are self sufficient from June to September/October every year. Part of this area was a greenhouse; the owner explained it started life as a conservatory on the house, now it houses strawberries not humans. This is not the only upcycled item in the garden either.

As we walked around the side of the house we saw the full garden, including the water features & pond. All the water in the garden is rainwater, it is collected off the roofs & there are gutters set up to fill the pond & mini stream. The water is even pumped to the toilet upstairs in the house! Very resourceful.

Our gardening club members have seen many gardens, all shapes, sizes, all over the world in fact, but this garden had 3 features not seen before. The first 2 were in the water. The photos I took don't do them justice! They were upside down fish bowls, full with water & fish & tadpoles. They were sublime! They added dimension to the water, a new way to view fish/tadpoles & certainly a talking point.

There were 2 lawns, both circular, one with a path around the edge & bordered with flower beds (free from weeds). The second lawn was in the newly acquired field so was a work in progress when we visited. However, the owner had a unique, time saving way of mowing the area. The petrol mower was attached to a pole in the centre of the lawn, the mower was started & off it went, on its own, cutting the grass in perfect circles! It was a sight to behold & to enjoy – a lawn mower working on its own!

The evening was clear, the sunset was glorious & it was framed perfectly at the end of the garden in a stone structure. This was when I realised there was a theme of the garden: circles. We walked through a set of arches made from wooden pallets back towards the house. Daffodils were provided a bright splash of colour in the spring sunset. An old wooden, free-standing, step ladder provided home for some potted plants. A tall birdfeeder proudly overlooked the 2 lawns. We were welcomed inside to 3 wonderfully set tables, tea pots filled, & a delightful selection of homemade sponges, cakes & scones; all of which were as delicious as they looked.

The garden was full of personality, experiments & the upcycling showed items can be used in different ways not just the one for which it was intended.

Next visit: Tuesday (yes, Tuesday) 2nd May. **Location:** Browns Nurseries, Trewidland

Entry: £2 (including tea & biscuits) Plants will be available to buy

Meeting at St Ive Park car park at 6:20pm – PL14 3LZ. Car share: £2

We are a friendly bunch who would love to have new members. Feel free to come along to the visit with no obligation to join – we'd be pleased to welcome you.

Pensilva W.I April meeting report.

Harp lust – apparently this is something which all harp players get (and some members too by the end of the evening)! Anne Hughes was able to explain how she became captivated by harp music and decided to set herself a challenge to learn. Describing herself as a late starter (in her 50s!). She tried to teach herself and went online to find a harp to buy. Luckily, she found a reputable source and soon became a proud owner of a lever and a folk harp. Realising she would benefit from lessons, she found a local harp teacher and this was the start of many unexpected adventures. Along with the ensemble put together by her teacher, this included playing at a wedding in Sandhurst, going on tour in Denmark, Seattle and Vancouver and busking in Switzerland! She also took part in a concert in Caernarvon and a personal highlight



– at the Minack theatre! Anne even entered the song for Cornwall and won! She played the winning song and we were transported to a relaxing world in Cornish.

Throughout her talk, she played her 2 harps ‘Salvey Ana’ and ‘Dusty Strings’, and we sat and enjoyed the tunes of Ashgrove, The Maid from the Parish of Penderrin, and An Evening of Roses. Members are hoping to go and see her play at the Callington May fest this year.

Birthdays were Trish Thomas, Sue Turpin & Sue Hill.

Competition winners: Flower of the Month: 1st Lynette Pook, 2nd Sue Turpin, 3rd Jen Rendle. A Musical instrument: 1st Mary Yates, 2nd Verna Dawe, 3rd Cherry Woodhouse.

Our next meeting will be Wednesday 10th May 7.15 at Millennium House.

Coronation party and Pensilva WI's 75th Birthday tea. New members and visitors are welcome to come along.

200 CLUB Draw Results for March 2023

**1st No. 73
Mr C Davies**

**2nd No. 106
Mr B Barnard**

**3rd No. 67
Ms T Welch**

Thank you

Valley Voices

Summer Concert

a varied selection of sacred and secular music for chamber choir



Saturday 17th June 2023

St Ive Church

near Liskeard

Entry by donation. All proceeds to the Church

Refreshments in the Interval

Artwork by Nicky May www.nickymayart.co.uk nickymayart@gmail.com

St Ive Church

Services at 11:15am

May 7th Morning Worship Led by John Howard

May 21st Holy Communion Led by Martin Sellix

It is great to be returning to two services a month.

Everyone very welcome. Tea, coffee and biscuits after the service

ST JOHN'S CHURCH, PENSILVA

A united congregation of the Church of England & the Methodist Church

SERVICES MAY 2023

Sunday	7 th	11.00 am	Rev Li Selman	<i>Holy Communion</i>
Sunday	14 th	10.30 am	Biddy Bishop	<i>Methodist Local Preacher</i>
Sunday	21 st	11.00 am	Geoff Cox	<i>Church of England Reader</i>
Sunday	28 th	11.00 am	Martin O'Connell	<i>Methodist Local Preacher</i>
		5.00 pm		Food for Thought

Thursdays 10.00 am Morning Prayer Fellowship

MAY EVENTS

Please see posters for full details

Thursday	4 th	12.00 - 1.30 pm	Baked Potato Lunch
Tuesday	16 th	6.30 pm	Bluebell Walk & Pasty Supper for Christian Aid
Wednesday	17 th	3.00 - 5.00 pm	Good Grief Café
Sunday	21 st	3.45 pm	Tea Time Church for children and their families
Thursday	25 th	2.00 - 4.00 pm	Memory Café
Tuesday	30 th	2.00 - 4.00 pm	Stitch, Knit & Natter

For further details or if you know of any illness or need in the village, please call Geoff, 362698 or Frances, 363718

Unity Methodist Church St Ive with Bealbury and Blunts

Meetings at St Ive Village Hall unless stated otherwise

Services for May 2023

Sun 7th May	11.15 am	United Service at St Ive Parish Church
Sun 14th May	10:30am	United Service at St Ive Village Hall. Led by Mrs Marguerite Smith, with Communion.
Sun 21st May	11.15am 6.00pm	United Service at St Ive Parish Church Greenshoots Service at Blunts MC
Sun 28th May	10.30am 5.pm	United Service at St Ive Village Hall led by Mrs Linda Eastlake United Food4Thought at St John's Pensilva

The Chattermakers craft group meets fortnightly at St Ive Village Hall and is open for all to come and join in. Bring your project, bring yourself and share in a time of chat and craft (mainly the former by all accounts) over a cuppa. All welcome. More details from Kathryn on 01579 382334.



Liskeard Repair Café - “If you can carry it, we’ll do our best to mend it!”.

What is a Repair Café?

We are a friendly group of volunteers, with repair skills in all kinds of fields, who come together once a month to help people make repairs to a variety of items, including clothes, furniture, electrical equipment and appliances, bicycles, crockery, toys, etc., etc. Also, if you like, you can sit with our repairers and learn new skills or simply get some expert advice. Alternatively, you can spend time chatting with others whilst enjoying a free tea or coffee and cake.

We are part of a nationwide network of Repair Cafes whose aim it is to create a more sustainable future and avoid the unnecessary disposal of items that with a simple repair will give them a new lease of life. But most of all, the Repair Café is a place for people to come together and see how easy and how much fun it is to repair things.

Repairs are free, however any donations are gratefully received to help maintain the ongoing costs of running the Repair Café.

Where and when can you find us?

We meet on the 2nd Saturday of each month from 1pm – 4pm at the Liskerrett Community Centre, Varley Lane, Liskeard, PL14 4AP. There is a small amount of disabled parking at the Centre and plenty of other parking at The Cattle Market pay & display car park adjacent to the Centre.

More Information

You can find out more about us and updates before each Repair Café of what skills are likely to be available on the day on our FaceBook Page, just search for Liskeard Repair Café.

Want to volunteer?

There is always room for more volunteer repairers. If you would like to join us either drop into one of our sessions, send us a message via our FaceBook Page or email liskeardrepaircafe@outlook.com

Dates of the next few Repair Cafés 2023 – All from 1pm – 4pm

Saturday 13th May Saturday 10th June Saturday 8th July

We look forward to seeing you.





Positive + Resilient + Together

Car sharing

A local resident got in touch with us to tell us how combining with a “Buddi” to share car journeys had saved them both “an absolute fortune”. The initial contact was made via a site called Liftshare, <https://liftshare.com/uk>. There is no obligation, you just enter the details of a journey, regular or infrequent, that you would be interested to share, and see what comes up. You can choose to accept or decline a potential Buddi.

Think about it! Save money and reduce your carbon footprint, in one easy move.

Simple things like this will make us more resilient as a community and as a society. If you are interested in joining our group and help to make our area a better place to live, in whatever way, big or small, please contact us via email posicrp@gmail.com or phone 07768 130520.

Follow Us: Instagram: togetherproject2022



Tamar Area Prostate Support (TAPS)

DON'T IGNORE THE SIGNS

- A need to urinate frequently especially at night
- Difficulty in starting to pee
- Weak flow
- Feeling that your bladder has not emptied fully

**Come and join us on the first Tuesday of the Month
10.00 at the Compton Park Engine House Callington
for a friendly chat and a coffee.**



Paul Mansell 01822 832179 Harry Lawson 01579 383258 John Stewart 01822 833343
Stephen Williams 07735 389883 Albert Doidge 01822 832471
Or email tapsinfo555@gmail.com

MILLENNIUM HOUSE

COMMUNITY CENTRE, AND DYNAMIC EVENT
VENUE IN THE HEART OF EAST CORNWALL



Conferencing

We have four meeting rooms for all your corporate needs.



Function Room

For parties, discos, or just larger events; with adjoining kitchen and bar.

Our Facilities

Sports Hall

For sports or larger events requiring a stage, the sports hall is our biggest venue.



Coffee Shop

Providing tea, coffee and cake. And for something stronger, there's the Mel, a licensed bar.



Enquire today:
01579 363096

www.millenniumhouse.org.uk
PRINCESS ROAD, PENSILVA, PL14 5NF

What Do We Do?

From wedding to wakes, kids or adults, corporate or community, we can host and cater your event. If you have an idea that's not covered here, get in touch and see if we're the right venue for you.

We're also home to:

- ✓ The Mel bar
- ✓ All Being Well Fitness Centre
- ✓ Post Office
- ✓ Sunflower Park kids playground
- ✓ Extensive playing fields
- ✓ Community Library



Millennium House Community Transport

Do you require transport to and from the doctor's or hospital?

Our Parish has a number of volunteer drivers who have agreed to continue to help those who do not have transport, by using their own vehicles to help those in need.

Millennium House Community Transport's aim is to connect local communities and reduce social isolation.

If you would like to volunteer as a driver, or if you require transport to hospital, doctor's or vaccination, and have mobility issues, or are unable to drive to your appointment: **please contact Marlene on 01579 362919 or 07896 994947** and we will endeavour to help.

Badminton at Millennium House

Come and join our relaxed and friendly group.

Mon & Tue 7:30 - 9:30pm

For further info phone Nigel or Carol on 01579 363594 or 07885 798370

PENSILVA VILLAGE HALL

We are now open and back in business!

Anyone wishing to book the hall for meetings, birthday parties or fundraisers, please contact Peter or Jackie Browning on **01579 363212** or email **peterpensilva@gmail.com**



Please note that as well as hall rent there is a coin meter for heating at 60p/hr.

MOBILE LIBRARY



The County Mobile Library visits our area every four weeks, always on a Friday. You can now browse the shelves again, but you can still pre-order books if you prefer.

Next visits: May 5th, 2nd & 30th June, 28th July, 25th August.

Stops at The Victoria Inn, Pensilva from 10.25 to 10.45am; and Quethiock bus stop from 11.00 to 11.25am.



Struggling with Sight Loss?

iSight Cornwall offers practical help to people living with sight loss in Cornwall including:

Low Vision: Advice for low vision aids

Assistive Technology: Advice on products

Benefits Advice: Assistance to claim entitlements

Equipment Demonstration: Advice on gadgets

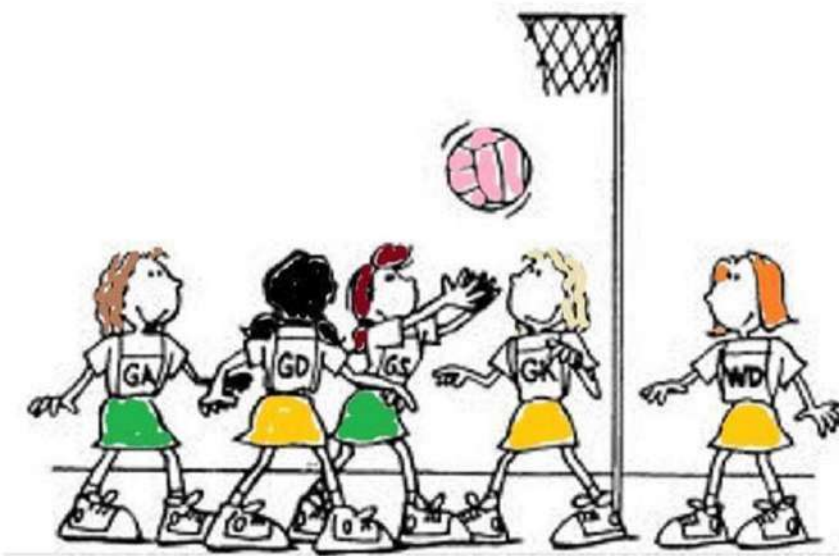
Social Clubs & Activities: Links to clubs & activities in the county

For more details Telephone 01872 261110 or visit

www.isightcornwall.org.uk

Ever tried...
Ladies Walking Netball?

Come along to Millennium House, Pensilva



Thursdays
4.00pm - 5.00pm

£2 per session

**For further info contact rosemaryfarley@gmail.com
or Tel. No. 01579 384810**

All Being Well

We are still open for three mornings a week. A maximum of six members can now attend at one time.

Opening hours:

Monday, Wednesday and Saturday, 9am to 1pm.

Maximum six members at a time for each of three slots within each session: 9:00 to 10:20, 10:20 to 11:40 and 11:40 to 13:00

Prior booking is essential

To book yourself in or for any enquiries, call in at the gym or telephone on **01579 363890**, during the opening hours listed above.

22 years working in our local community to improve health, fitness and well being.



Action for
Children



NEW YOUTH GROUP FOR 11-19 YEAR OLDS

UP TO 25 YEAR OLD WITH SEND

EVERY FRIDAY 5.00-7.00PM

FREE OF CHARGE & OPEN TO ALL.

VENUE: MILLENNIUM HOUSE, PRINCESS RD, PENSILVA,
LISKEARD PL14 5NF

ACTIVITIES, DRINKS/SNACKS & A CHANCE TO HELP BUILD A
YOUTH LEAD GROUP IN YOUR AREA.

FIND OUT ABOUT US @:

WWW.SERVICES.ACTIONFORCHILDREN.ORG.UK/KERNOW-CONNECT

Bargain Corner Free Ads up to £50

Ads are free for items up to £50. £5 charge for items over £50. Please leave a note at Millennium House reception, ring the Parish Office on **01579 363096**, or email **parishpump@btconnect.com**.

***** Please let us know when your item has sold *****

Snooker Table, 5ft x 2ft 6ins, incl. 2 cues & chalk, full set of snooker balls, scoreboard, & table brush. G.C.
£30 ono. 01579 662594

Dehumidifier £25. New drain rods £15. Extension ladders £45. Foot Massager (new) £25.
Phone Les on **07926627291** Pensilva.

Childs Car Seat. GRACO Nautilus Groups 1, 2 and 3. To fit ages 9 months to 12 years. VGC. Occasional use only. Complete w/ Owners Manual. **£35.**
Tel 01579 362164

Stretched canvases on wood frames. No longer needed.: Two, 120x150cm **£20 each.** Four, in orig. shrikwrap, 100x80cm **£15 each.** Suitable for Acrylic or Oils. Offers considered.
07887 787202 Pensilva..

ABBA albums, £3 each.
Box set Rolling Stones albums, £20.
01579 363363

Winter Warm down flow **fan heater.** Model WWDF20. **£18.**
Epson Stylist **printer.** Model SX130. **£12.**
01579 347403.

Kirsty **exercise bike. £50 o.n.o** (in aid of charity). Can deliver in Pensilva area.
01579 363833

Four motor biker jackets at £10 each

1. Red/Black, Frank Thomas, Size 44.
2. Black leather, ladies, Size 12-14.
3. Black leather, Size medium.
4. Black/Red, Size XL.

All in GC. 01579 346986.

Car roof box. Opens both sides. Only used once. Full instr's. L 2300mm W 820mm H 360mm. **£50. 01579 362217.**

Axminster 2 speed forward and reverse **drill**, in GWO **£10** and a **Power Planer PPL800 - 800W** in GWO requires a new blade **£10** or **£15** for the two items.

2 Empty Dewalt Tool Cases, 1 general tool box with free Dewalt cordless drill no battery. **£30.**

10 wooden **moulding planes** Usable cond. 1 wooden spirit level & scribe. **£50.**

Six coils of **industrial steel cable** now surplus to requirements **£35** the lot.

New 12'x3'1" good quality hard **vinyl flooring**, light/med brown wood effect **£15.**
01579 384658 (Safe Distancing if reqd.)

Ladies Rocketdog wedge **flipflops** black with red and mixed colour beads on material, size 5. still in box as new paid **£10.**
Upton Cross/Minions 07368 528398.

Please let us know when your items have sold.

ADVERTISING SECTION

TO OUR ADVERTISERS: Firstly, thank you for advertising in the St Ive Parish Pump. Your support enables us to provide a much-valued monthly newsletter to our parishioners, while also giving businesses in our area affordable access to a sizeable local market of grateful consumers.

New advertisers are asked to pay in advance. Advertisers who are behind with their payments will have their adverts removed from subsequent editions until payments are brought up to date.

Advertising prices:	<u>Net of VAT</u>		<u>Including VAT</u>	
	<u>1 month</u>	<u>12 months</u>	<u>1 month</u>	<u>12 months</u>
Quarter Page:	£ 8.33	£83.33	£10.00	£100.00
Half Page:	£ 16.67	£167.67	£20.00	£200.00
Full Page:	£ 27.50	£275.00	£33.00	£330.00

Thank you, once again, for advertising in our newsletter. We hope that you will continue to do so, and we wish you every success with your business.

ADVERTISE HERE!

This box for **just £20 per month** incl. VAT (£16.67 Net)

2 MONTHS FREE for a 12 month order.

i.e. **£16.67 per month** incl VAT for 12 months (£13.89 net)

See the full tariff on page 3

One thousand copies per month distributed free of charge to households in the Parish of St Ive.



GENERAL GARDEN & HOUSE MAINTENANCE

NO JOB TOO SMALL

Call to discuss your requirements.
NO OBLIGATION quotes given.

One off jobs or regular work catered for.

Here are some examples...

OUTSIDE

MOWING

HEDGE CUTTING

FENCE PAINTING

BOARDER WEEDING

PATIOS & DRIVES

CLEANED

INSIDE

WINDOWS CLEANED
INSIDE & OUT.

PAINTING

CLEANING

SHOPPING

IRONING

CALL ANDREW CARLIN

now on:

07407 323888

Thank you.



MICHAEL HOSKINS

ALL ASPECTS OF DECORATING, INSIDE OR OUT

PROPERTY MAINTENANCE

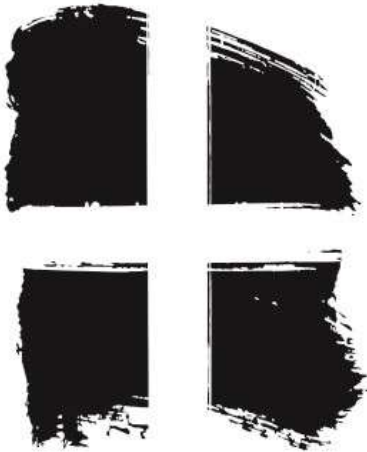
STONEMWORK A SPECIALITY

FIREPLACES AND STONE WALLS

PATIOS AND DECKING

REASONABLE RATES

PHONE MIKE ON 07715 521044



Right-on 
Plumbing &
Maintenance

Gareth Haines

Tel: 07947353682

Colin Swinburne Electrical Services



All aspects of domestic and commercial electrical work.

Inspection and testing (EICRs), fault finding, new installations, rewires, consumer unit replacement, additional sockets, lighting upgrades, garden power and lighting, extractor fans and more.

Electrician in Pensilva. Free advice and quotes.



CSES@btinternet.com 07974499138



Group Travel

Day Trips & Coach Holidays

Enterprise Park, Midway Road, Bodmin, Cornwall PL31 2FQ Tel: 01208 77989

Coach Excursions & Tours 2023

Tue 16th May	Steam Train to Minehead and Lynton & Lynmouth Cliff Railway
Tue 13th June	Hestercombe House & Gardens
Tue 27th June	Train from Paignton to Kingswear & Cruise Dartmouth to Totnes
Tue 11th July	Exmouth & River Cruise to Exeter
17th – 21st July	Visit Bournemouth
18th August	RHS Rosemoor Gardens Flower Show
1st – 3rd Sept	Burghley Horse Trials
24th - 30th Sept	Cairngorms, Scotland
11th October	Goosey Fair, Tavistock

Visit our website for all our excursions & tours and download a PDF version of our 2023 brochure.

Call: Dawn or Robin on 01208 77989 for bookings and brochure
website: www.grouptravelcoachhire.co.uk
email: grouptravelcornwall@btconnect.com

Bodmin MOT Centre

01208 77989

Garage Services
MOT Testing Station
Classes 4, 5 & 7
Servicing & Repairs
High Vehicles & Motorhomes
Brake Test & Headlight Alignment
Pre MOT Inspections
Annual & Interim Vehicle Servicing
~
Commercial interim inspections available
including brakes and lights
~
Helping you stay compliant

Bodmin MOT Centre
at Group Travel
Enterprise Park, Midway Road,
Bodmin, Cornwall PL31 2FQ

Trystan Phillips



Carpentry/Joinery & Property Maintenance



35 Years' Experience

Fully Insured Including Public and Product Liability

All aspects of Carpentry undertaken including:

Bespoke Carpentry & Joinery , Kitchen Installations, Doors, Partitions, Skirtings, Architraves, Shelving, Timber Floors renewed & repaired, Laminate Floors fitted, Timber Windows repaired including 'Sliding Sash'. Plus General Property Maintenance, including Painting/Tiling & much more!

07397 153792 trystanphillips carpentry@gmail.com 01579 363150

Debbie's Care Services

Tel. 0777 948 3230

Hello, my name is Debbie. I am a local lady who has been working in the community for over 30 years.

I provide the following services and more!

- Assisting bathing / showering
- Preparation of meals
- Cleaning / Shopping / Ironing
- Companionship / Friendship and emotional support
- Assisting with mobility
- Day, Evening and Night Care

New, High-Quality, Local
Decorating Service

EDEN SERVICES



Interior / exterior decorating, including spraying

All work fully insured and guaranteed

References available

High quality work at sensible prices

Over 25 years experience

Call Julian for a free, no obligation quote

Mobile 07775 515036 Office 01579 641129

Find us online:
fresh_prop.co.uk



Top quality carpet, upholstery & hard floor
cleaning services based in Callington

Long-established cleaning professional

Domestic & commercial

NCCA qualified & member

Steam cleaning & dry carpet cleaning

Tile & grout + natural stone clean & seal

Vinyl & LVT including Amtico & Karndean

Call 0800 3893393 or 07905 188459

Or email nevil_fresh@msn.com

TRADITIONAL STONE SERVICES

CLASSIC & TIMELESS
STONE MASONRY
AND LETTERING

MEMORIAL CLEANING

COMMISSIONS TAKEN

01579 363693

OR

07507 782282



Domestic Electrical
Property Maintenance
Interior & Exterior Work
Carpentry :: Decking
Kitchens :: Bathrooms
Wall & Floor Tiling
General Plumbing

MCCARTHY PROPERTY MAINTENANCE

**Electrical Safety
Register**

incorporating
ELECTSA + ECA
Certification Ltd

HIGHLY REGARDED LOCAL BUILDER
COMPETITIVELY PRICED
COVERING THE SOUTH WEST

Contact Dominic

07968 599 675

01579 362 945

info@mccarthypropertymaintenance.co.uk

www.mccarthypropertymaintenance.co.uk



Maintaining and preserving our
countryside for the benefit of all

Dry Stone Walls

Cobblestoning

Stone faced walls

Hedgelaying/steeping

Land management

All aspects of Landscaping

Mobile: 07539 296799 or

Email: info@just-in-stone.co.uk

Westwood Garden Maintenance



Antony Watts

Grass Cutting, Clearance

Weeding, Turfing

Hedge Cutting

Patio Cleaning, Planting

Regular Visits / One-off Contracts

Residential & Commercial

FREE ESTIMATES

01579 362019 www.westwoodgm.co.uk 07952 094472

JPH Plastering and Rendering

Internal plastering

Internal and external rendering

Internal/external painting & decorating

Property maintenance

Landscaping and land management

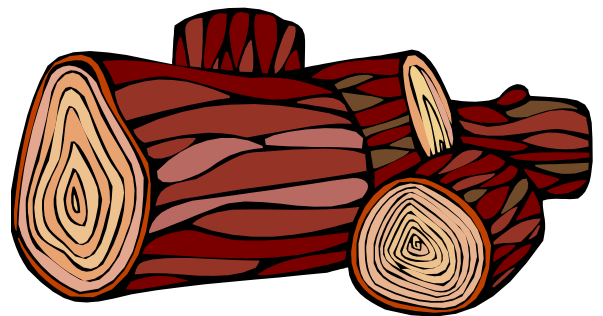
For estimates and no obligation quotes

contact Justin on:

07539 296799 or

info@just-in-stone.co.uk

SEASONED LOGS



MIXED LOAD

or

HARDWOOD

Tel. Jonathan

Mobile 07966 070725

or

01579 363157

PENROSS

Rosecraddoc Lodge Holiday Bungalows
(Between Pensilva & Liskeard)
Perfect for family & friends coming to visit!



Sleeps 4

Sorry no pets or smoking

Tel: Julie 01579 362221

Email: penhargetfarm@gmail.com

NICOLA GREENE

BSc (hons) Podiatry MChs

HPC Registered Chiropodist/Podiatrist

**Home Visit Practice treating all
your foot care needs:**

- Nail Cutting
- Corns and Calluses
- Thickened Nails
- Dry Cracked Skin
- Verrucae
- Foot Pain
- Diabetic Foot Assessments
- Wound Care

T: 01579 590027

M: 07786164205

E: nicki_greene@yahoo.com

Matt's Windows

Repair of Windows, Doors & Glass Unit Replacement

Making draughty windows great again!

T: 01579 641228

M: 07533 387368



KV Accounting Solutions

ACCA

Local Accountant offering fixed fee accounting services

With over 20 years experience, I am a fully qualified, friendly, local accountant

- | | |
|---|--|
| ✓ Annual Accounts for Sole Traders and Partnerships | ✓ Self Assessment tax returns |
| ✓ Book Keeping & Payroll | ✓ iXBRL tax filing |
| ✓ Personal Tax Planning | ✓ Tax investigation Fees Insurance |
| ✓ Company Accounts | ✓ Company Secretarial work |
| ✓ Business Support & Advice | ✓ Tax calculations for Sole Traders and Partnerships |

Kate Vaughnley FCCA - Chartered Certified Accountant

Website : www.kvaccountingsolutions.co.uk or Email : katevaughnley@gmail.com

Telephone : 01579 364083



**NATURAL GAS - LPG - OIL
BOILER INSTALLATION**

BOILER SERVICE & REPAIR

LONG WARRANTY FREE QUOTES

07859848288

bagasservices@outlook.com

533335

**GAS
safe
REGISTER**



Kiln Dried Firewood
Kindling & Firelighters
Eco Heatlogs
LPG Bottled Gas
Patio, BBQ & Camping Gas
Coal & Smokeless Fuel



0800 8021 223
sales@loganslogs.co.uk
www.loganslogs.co.uk

Heel 2 Toe Footcare

Tired Aching feet.

Corns, Hard skin, Verruca.
Fungal infected toe nails, or
toe nails require cutting.

Diabetic feet also treated and
regularly checked.

I can help to keep your feet
looking and feeling good.

I am a trained Foot Health
Practitioner to Diploma Level, fully
insured & DBS checked.

I can do home visits via an
appointment.

Call Penny: **07746 926146** for
further information. **Please note**
new number May 2021.

J. J. Child

Plumbing and heating engineer.

Oil appliance service, repair and breakdowns.

Over 30 years experience

Call John: 01579 362336 or 07837 921086



PMB Book Keeping

Friendly Book Keeping Services:

Purchase and Sales Ledger
Bank Reconciliations
VAT returns - Making Tax Digital
Self Assessment Tax Returns
And More

Fully Qualified, Insured and
Licenced

T: 01579 683624

E: pmboutsourcing@outlook.com



Fencing
Paths & Steps
Turf & Astro turf
Driveways
Retaining walls
Digger work
Footings & foundations

Patios
Rendering
Decking

And more

Free no obligation quotes

Call Rob on:

**07518246666 or
01579 641802**

Debbie Hicks - Counselling and Psychotherapy

Caring, confidential counselling for all.

*I work in a therapeutic relationship to
help you understand yourself better.*

*I offer a warm, approachable, relaxed
environment for you to untangle your
thoughts and emotions.*

www.debbiehickscounselling.co.uk

Email: debbiehicks10@gmail.com

07851 133782

More info on my
website or by
contacting me.



Window Cleaner

Window Cleaner

Also any upvc cleaned

i.e. fascias, gutters, etc.

gutters cleared & unblocked

Please phone Rob

07709 053464

Window Cleaner

Window Cleaner

INDEPENDENT FAMILY FUNERAL DIRECTORS

Supporting families to arrange funerals with sensitivity, dignity and care.

- Flexible, caring approach, tailor-making funerals to suit your needs and budget.
- Open and transparent, affordable pricing.
- Free bereavement support sessions, open to all in our community, first Wednesday of the month, 10am - 12pm.
- Prepayment Funeral Plans available

For details of our services and prices, visit our website.



01579 362358 | www.fdhallfunerals.co.uk



Avalennek, Caradon Town,
Upton Cross, Liskeard
Cornwall PL14 5AR
Telephone 01579 363598
Mobile 07901 538132
chrisrounsevell@tiscali.co.uk

HOG ROAST EQUIPMENT HIRE AND MEAT SUPPLY

Hog Roasts For Those Special Occasions
Self Catering or Hassle Free Service
Everything done to your special requirements

CHRIS ROUNSEVELL
TRADITIONAL BUTCHER

Come and visit our recently updated
Tile & Bathroom showroom in PENSILVA

We offer a generous discount to all Pump Readers

Unit 24 Pensilva Ind Est, St Ive Road, Cornwall PL14 5RE 01579 362264



CORNWALL TILE
CENTRE

Pensilva Showroom

Open Mon - Fri 8.30am - 5pm
Saturday 9.00am - 1pm

Tiles & Mosaics for:

Bathrooms & Kitchens Living Areas Conservatories
Patios & External Areas Wet Rooms & Spas Swimming Pools
& All Commercial Applications

 atlas concorde

www.cornwalltile.com

OPEN FOR RETAIL, TRADE & COMMERCIAL ENQUIRIES



THE HOME OF WOOD

BULK DISCOUNTS AVAILABLE ON OUR 30 YEAR SERVICE LIFE POSTS



OUR GOLD TREATED STAKES AND POSTS ARE THE ONLY ONES AVAILABLE IN THE UK THAT ARE APPROVED BY THE WPA BENCHMARK FOR 30 YEAR SERVICE LIFE

For more information please contact one of our team



Bond Timber, Bake Sawmill, Trerulefoot, Saltash, Cornwall,

PL12 5BW

01503 240 308 stacy@whbond.co.uk

Pensilva Stores

Amazing Value

Premier
a great deal more from your local store
Mon-Sat. 7:00 AM. - 9:30 PM.
Sunday 8.00 AM. - 9:30 PM.

- ✓ Fantastic Special Offers every month!!! (See store leaflets)
- ✓ Come and Check out our great deals on Wine, Beer and Spirits
- ✓ Local Produce: Homemade Butter and Clotted Cream, Meat from our local butcher
- ✓ Cornish Fresh Fruit and Vegetables
- ✓ Fresh Bread, Pasties and Cakes
- ✓ Take Away Coffee, tea and hot chocolate
- ✓ Newspapers and Magazines, Greeting Cards
- ✓ Paypoint, Lottery

* **Free to use ATM** *
* **Card Payment** *

Friendly Staff + Service with a Smile !!!

Pensilva Stores is a family run business who have been serving local people and visitors for more than 21 years.

Higher Road, Pensilva, Liskeard, Cornwall PL14 5NQ

Tel: 01579 362547

MENDOLOGY

Garage Door Specialist

- Repairs
- Servicing
- Installations


Out of hours service
call Dave anytime 07974 442645

MENDOLOGY COMMERCIAL DOORS LTD
www.mendologydoors.co.uk

01579 363760

PensilvaCars

01579 363516

- ✓ MOTs Class 4
- ✓ Service
- ✓ Repair
- ✓ Tyres
- ✓ FREE Courtesy Car
- ✓ Car & Van Sales
- ✓ Diagnostics
- ✓ Air Conditioning
- ✓ 

We have offered a supply, fit & balance of tyre service for 10 years at competitive prices.

Most of our tyres can be supplied the same day.

LOCAL RECOVERY £45.00

www.pensilvacars.co.uk

pensilvacars@hotmail.co.uk

We can service and repair your car to manufacturer specification, keeping your dealer warranty without main dealer expense.





Pensilva & St Ive Post Office Service

Pensilva: Through the coffee shop on the 1st floor of Millennium House

Tuesdays: 9am to 1pm.

Wednesdays: 9am to 12 noon.

Fridays: 9am to 12 noon

.....

St Ive: At St Ive Village Hall

Wednesdays: 10:30 to 11:30am

**The Millennium House
coffee shop is also open on
these mornings.**

**Coincides with the St Ive
Village Hall Coffee Morning**

Saint Ive Parish tree-planting survey

Please let us know about any trees that you plant within the Parish. We will include them in our own survey and we will notify the Forest for Cornwall on your behalf, if appropriate.

email posicrp@gmail.com or message us on Facebook

www.facebook.com/posicrp or phone 01579 364016.

Pictures very welcome.

