

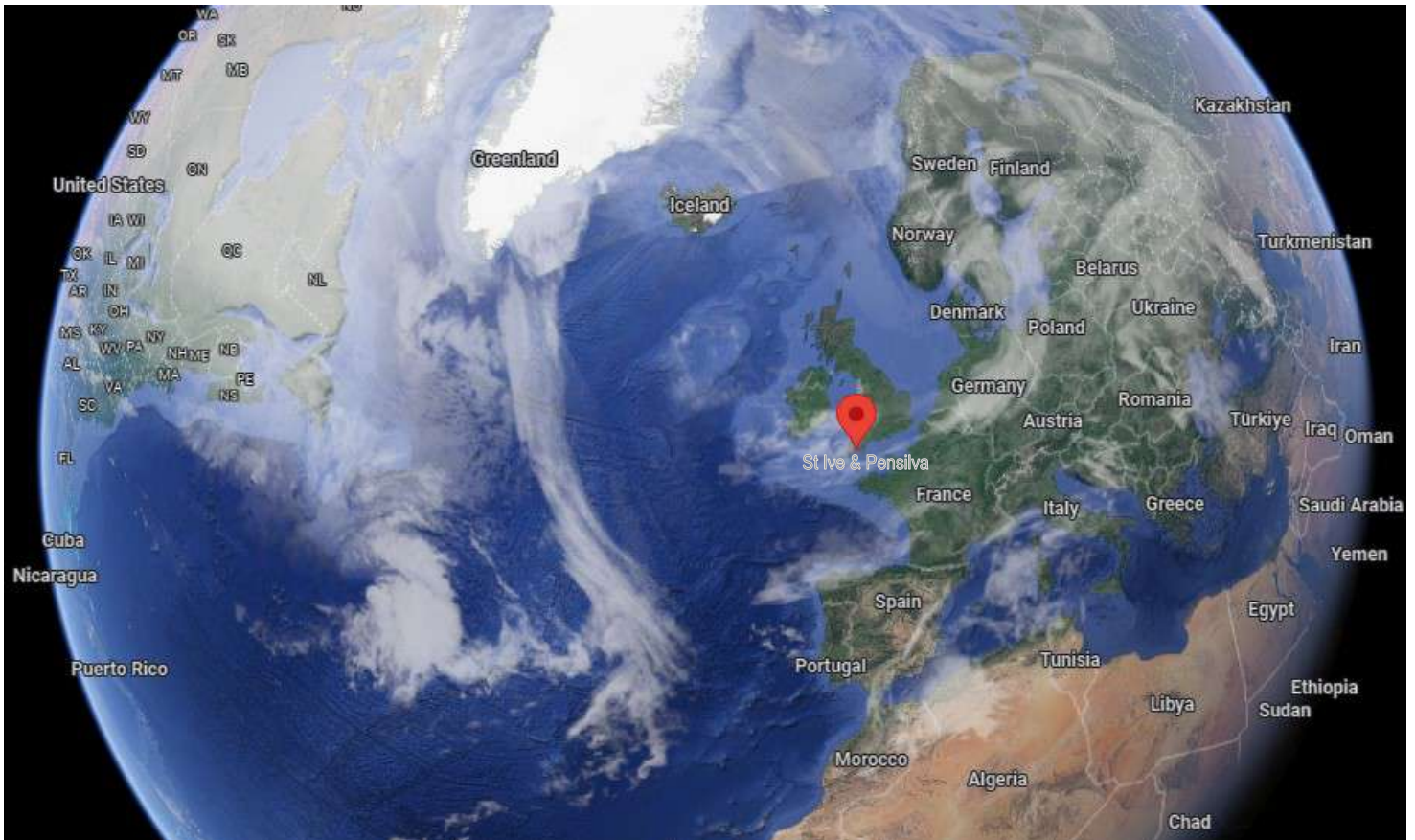
# THE PARISH PUMP



March 2023  
Edition 496



**The Newsletter for the Parish of St Ives**



Your local newsletter,  
but part of the bigger picture!

## Disclaimer

The articles appearing in this magazine do not necessarily reflect the views of the Parish Council nor of the Parish Pump Editor.

### Parish Councillors Telephone List

Alan Moss (chair)	01579 362064	Marlene Carr (vice-chair)	01579 362919
James Bruce	07411 192645	Martin Corney	01579 382450
Sandra Doe	01579 363096	Rosemary Farley	01579 384810
Nigel Gisby	01579 363096	Tony Hodson	07973 536964
Nigel Libby	07968 891814	Paul Mann	01579 363757
Patricia Steer	01579 363096	Ivor Vaughan	07979 934604
Craig Vaughnley	01579 364083		

Sharon Daw (Cornwall Councillor) 07837 379305 slash.dash.daw@gmail.com

### Meetings of St Ive Parish Council

Meetings are now being held on the 2nd Monday of the month except August and December when no meetings are held. Please see the Parish Council website for meeting dates, agendas and minutes.

<http://st-ive-parishcouncil.gov.uk/minutes-agendas/>



Devon & Cornwall Police  
Building safer communities together

 **101**

Minicom 18001 101

### Police Community Neighbourhood Office

Your Community Support Officer is PCSO Steve Edser 30173.

email: CIOSNBMLLST@devonandcornwall.pnn.police.uk

To report a crime call 101 or go to [www.devon-cornwall.police.uk](http://www.devon-cornwall.police.uk)

In an emergency call 999

## Contact details for St. Ive Parish Council and for Millennium House

Address for correspondence: Millennium House, Century Square, Pensilva PL14 5NF

General Parish matters should be raised initially with the Parish Clerk, Jenny Hoskin, who will present them to the Parish Council.

Telephone: 01579 363096, email: stiveparish@btconnect.com

For accounts matters for the Parish and for Millennium House contact John Body, Finance Officer: 01579 362102, email: millenniumhouseadmin@btconnect.com

Millennium House enquiries and reservations: 01579 363096

email: millenniumhouse@btconnect.com.

On the web: Millennium House Website: [www.cornwallvenue.com](http://www.cornwallvenue.com)

Parish website: [st-ive-parishcouncil.gov.uk](http://st-ive-parishcouncil.gov.uk) Facebook: [facebook.com/stiveparishcouncil](https://facebook.com/stiveparishcouncil)

## PARISH PUMP ADVERTISING COSTS

The prices for advertising in the Parish Pump are as follows:

The below prices include VAT at 20%:

**Quarter page: £10:00 per month or £100:00 for 12 months.**

**Half Page: £20:00 per month or £200:00 for 12 months.**

**Full Page: £33:00 per month or £330:00 for 12 months.**

## Parish Pump Information and Contact Details

To contact the editor please email: [parishpump@btconnect.com](mailto:parishpump@btconnect.com)  
or phone the Parish office: **01579 363096**.

Hardcopy submissions by post or by hand to the Parish office, Millennium House, or Millennium House reception.

Softcopy submissions: By email to the editor in MS Word, MS Publisher, pdf, Tiff or jpeg. Please use A4 pages and minimum 16 point font as the Pump is initially produced in A4 size and reduced to an A5 booklet at the printing stage. If in doubt please contact the editor.

Bargain Corner free ads by email to the editor or drop off at the Parish Office.

Deadline for the Parish Pump is STRICTLY 15th of every month

## From the Editor

The Wildanet caravan has reached our part of Pensilva and, while I was negotiating the roadblocks, it occurred to me that the arrival of superfast broadband is just the latest of many national infrastructure projects that, over the centuries, have significantly affected the lives of local residents. Doing a bit of internet research on my not-superfast-but-OK connection, I discovered that Liskeard railway station opened on May 4, 1859, which must have felt like a massive event at the time. Suddenly you could catch a train to London instead of having to rely on the old coaching route (that first appeared on maps in 1675). The A30 to London still mainly follows the same route taken by those horse-drawn coaches.

The exact arrival of the telephone to our area is a bit harder to pinpoint. Although, from as early as 1870, Porthcurno in West Cornwall has been an important landing point for underwater communication cables from all over the World, it seems unlikely that many homes in the county would have had access to a telephone until at least the 1920s. Direct dialling arrived later and the last manual switchboard in the UK didn't close until 1960. Not long after, along came mobile telephony: in the late 1990's 20% of the World's population had a mobile telephone. (That's one each, not one between them!) By 2008 there were more than 4 billion subscribers. The World population has increased by about 16% since then: more than 1 billion extra humans, all on Tic-Toc, apparently.

Soon we'll be able to download a film in fractions of a second, then sit and chat about it with our friends, relatives and robots all over the World, as though they were sitting right there with us. That would be great, probably, but it might lead to more family feuds. Better communications probably won't change the way we are. "Alexa, start a row!"

At some point we will be forced to take account of how all this progress is affecting the planet we rely on to keep us alive. Yes, it would probably be amazing, for example, to go on a cruise in space and look down on our spectacular planet, but I'd prefer to ensure that we can continue to look out from the windows of our own homes, on a bright winter's day like today, and watch the birds as they start to think about the coming breeding season. The birds don't know where human progress will take us next, and we owe it to them to ensure that the choices we make don't wipe out their delicate 'critical infrastructure.'

All the best - Joe

## Chairmans Report March 2023

There was an excellent attendance at the Defibrillator training on the 15<sup>th</sup> February with a great review from those who attended, I hope everyone found the training useful.

Our PCSO Steve Edser and myself will be available at the Millennium House Coffee Shop on the 10<sup>th</sup> March between 10am and 12am if you have any issues or questions for either Steve or myself.

You may have noticed the reappearance of the yellow no parking lines along the road side, this is as a result of the PC contacting CC Highways. The workmen will be returning in the next weeks to complete the job. I've had a number of phone calls asking if the lines could be extended in certain areas to ensure driveways are not blocked. These requests have been passed to Highways, although we at the Parish Council have no influence in their decisions.

There are St. Patrick's day celebrations on 17<sup>th</sup> March at the Mel Bar, and preparations are underway for the Coronation Celebrations too. Spring is on its way!

Stay safe - Alan Moss

### **St Ive Village Hall PL14 3LZ**

### **HALL HIRE - £5 an hour**

Includes the use of kitchen and electric  
(except wall heaters which are on a coin meter).

For bookings ring Amanda or leave a message on 07703 393070

### **Regular Group and Activity Timetable**

Gardening Club	1st Monday monthly 7:30pm	01579 382762
St Ive Snooker Club	Mondays & Thursdays 7:00pm	01579 382315 R Bunkum
Mobile Post Office	Wednesday 10:30 - 11:30 am	
Coffee Morning	Wednesday 10:30 - noon	
Methodist Sunday Service	Check timetable or for services	Katherine or Keith Mutton 01579 382334

**WEEKLY PARENT AND TODDLER GROUP PLANNED TO START  
ON MONDAY 17<sup>TH</sup> APRIL 2023**



**COMMUNITY COFFEE SHOP  
MILLENNIUM HOUSE PENSILVA  
COMMUNITY COFFEE SHOP  
MILLENNIUM HOUSE, PENSILVA**

**We are open Tuesdays, Wednesdays and Fridays  
9.a.m. to 1.p.m. (to coincide with the Post Office).**

**We, the volunteers, opened the Coffee Shop in 2017 with the hope of giving something back to the community. The atmosphere is relaxed, making it an ideal place to enjoy meeting up with friends for a cuppa and a chat. A warm welcome is assured.**

**We would like to say a huge 'Thank You' for your continued support.**

**Opening times for the Mel Bar at Millennium House**

<b>Sunday</b>	12 Noon-5 pm	<b>Monday</b>	Closed
<b>Tuesday</b>	7-11 pm	<b>Wednesday</b>	5-11 pm
<b>Thursday</b>	5-11 pm	<b>Friday</b>	5-11 pm
<b>Saturday</b>	5-11 pm (from 2pm for Pensilva football 1st team home games)		

**St Ive Church**

**Lent Lunches**

**Friday 10th March and Friday 24th March**

**At 12 noon**

**Everyone very welcome**

# Warm Space!

Come and keep warm at Millennium House!

Every Monday to Friday!

9am - 4pm

Games, tea, coffee and company are all here!

Bring a book, knitting or other skill/hobby  
to keep you busy while we keep you warm!

Everybody welcome!

Meet friends  
& family, or  
make new  
friends!

Free Wifi



Stay warm  
and safe

The more,  
the merrier!

*There's tea and coffee and a happy face  
To keep you cosy in a nice warm space!*

## MH Warm Space - volunteer transport

Is lack of transport preventing you from using the warm space? Let us try to help. We are recruiting volunteers to pick you up from your home and drop you back home when you're done. There will be no charge to you.

To make use of this service, please call Millennium House on 01579 363096, or on 01579 362919 if the centre is closed.

### Appeal for volunteer car drivers.

If you have a vehicle and you are going to, or near, Millennium House, can you help by picking someone up on the way? Perhaps you can combine it with the school run, or a trip to the shop, post office or surgery. Or perhaps you just want to help others who are struggling to keep warm this winter, and you don't mind making a special trip. If you might be able to help in some way, please call Millennium House on 01579 363096, or on 01579 363919 if the centre is closed. Thank you!

### **Time to get walking again!**

With Spring on its way we start to think about walking in the beautiful English Countryside again, but where to find new and interesting walks?

'Walking in Cornwall' [www.walkinginengland.co.uk/cornwall](http://www.walkinginengland.co.uk/cornwall) has loads of walks to download and print, free. It also has books of walks, details of all the walking groups in the county and much more. Whether you want to walk on your own or with a group, all the information is there in one place.

John Harris (who maintains the website) said: "There is so much walking information on the web, but it is difficult to find. Walking in Cornwall (part of the Walking in England website) has brought it together in one place, so whether you are walking from home, or away on holiday, you will be able to find a walk suitable for you."

With walks from half a mile long to twelve miles plus, and a note of suitability for pushchairs and wheelchairs, everyone can find a walk to enjoy.

So home or away, check out the websites and get walking!

John Harris - [john@walkinginengland.co.uk](mailto:john@walkinginengland.co.uk) - [www.walkinginengland.co.uk](http://www.walkinginengland.co.uk)





# Liskeard Repair Café - “If you can carry it, we’ll do our best to mend it!”.

## What is a Repair Café?

We are a friendly group of volunteers, with repair skills in all kinds of fields, who come together once a month to help people make repairs to a variety of items, including clothes, furniture, electrical equipment and appliances, bicycles, crockery, toys, etc., etc. Also, if you like, you can sit with our repairers and learn new skills or simply get some expert advice. Alternatively, you can spend time chatting with others whilst enjoying a free tea or coffee and cake.

We are part of a nationwide network of Repair Cafes whose aim it is to create a more sustainable future and avoid the unnecessary disposal of items that with a simple repair will give them a new lease of life. But most of all, the Repair Café is a place for people to come together and see how easy and how much fun it is to repair things.

Repairs are free, however any donations are gratefully received to help maintain the ongoing costs of running the Repair Café.

## Where and when can you find us?

We meet on the 2<sup>nd</sup> Saturday of each month from 1pm – 4pm at the Liskerrett Community Centre, Varley Lane, Liskeard, PL14 4AP. There is a small amount of disabled parking at the Centre and plenty of other parking at The Cattle Market pay & display car park adjacent to the Centre.

## More Information

You can find out more about us and updates before each Repair Café of what skills are likely to be available on the day on our FaceBook Page, just search for Liskeard Repair Café.

## Want to volunteer?

There is always room for more volunteer repairers. If you would like to join us either drop into one of our sessions, send us a message via our FaceBook Page or email [liskeardrepaircafe@outlook.com](mailto:liskeardrepaircafe@outlook.com)

## Dates of the next few Repair Cafés 2023 – All from 1pm – 4pm

Saturday 11<sup>th</sup> March    Saturday 15<sup>th</sup> April (3<sup>rd</sup> Saturday due to Easter)

Saturday 13<sup>th</sup> May    Saturday 10<sup>th</sup> June    Saturday 8<sup>th</sup> July

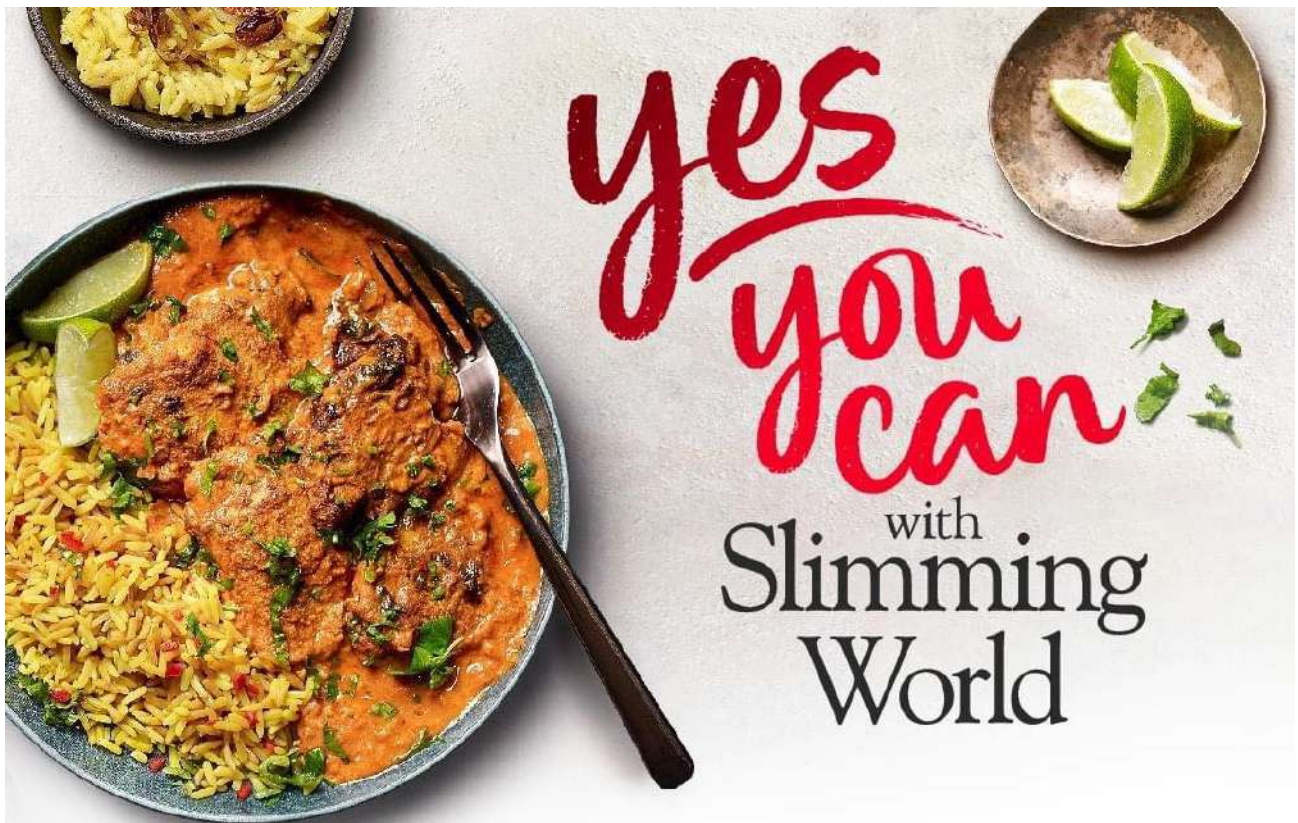
**We look forward to seeing you.**



New Year. New start. New venue.

The Chattermakers craft group is going to regroup and meet at St Ive Village Hall, beginning on Thursday 9th February at 7.30pm.

All welcome to join us to work on your project or just come along for a natter, along with tea, coffee and biscuits.



**Coming back!!**

Millennium House

Pensilva Friday 5:30pm

Hayley 07966370233

3rd March

[slimmingworld.co.uk](http://slimmingworld.co.uk)





## From Pensilva School

It's been a busy half term at Pensilva Primary School. The children have been learning about an incredible assortment of topics. Almost every day I am taught something by the children. I've been taught about moss, the lifecycles of various creatures and even about the 1960s. It really is a joy to see the enthusiasm on children's faces in lessons and when they relay their learning to others.



School is, of course, more than lessons. There have been plenty of opportunities for children to participate and shine in clubs, sports and events. Our cross-country teams have had success in recent races with a number of children improving their finishing places each race. Some of the younger children have had the opportunity to take part in bikeability lessons on their balance bikes – they beamed with pride when they

received their certificates.

A huge thank you goes to Mrs Sissons, Miss Tubby and the Year 6 team who have spent weeks reorganizing the school library. It has been a labour of love, but has been well worth the effort. The library is now a vibrant, inviting space for children to immerse themselves in the world of books.



A final note of thanks goes to the school governors, who show an unwavering support towards the school by giving their time and expertise. Please see the accompanying governors' note for anyone interested in joining the governing body.

Pensilva Primary School's vision is to create a positive and nurturing learning environment where our children can feel happy, safe and respected. Our curriculum emphasises outdoor learning that encompasses our locality between the beautiful moor and stunning coastline with its rich environment and diverse Cornish history. We aim to offer children knowledge, skills, opportunities and experiences to enable them 'to live, to love, to learn'. Good governance is a central component of a successful organization. Being a school governor is a voluntary but vital role in the leadership of a school. We set the strategic vision and direction, approve the budget and hold the senior leadership team to account. It is a rewarding role, working towards a shared goal of providing a high-quality education for children in our community. It also provides an opportunity for personal development, building skills and experience in senior management.

To be an effective governing body we value a broad blend of knowledge, skills, perspectives and backgrounds. Currently we are looking to increase the number of our governors and would welcome interested individuals to contact Headteacher, Mr Matt Davies, to arrange a visit to the school; particularly needed are applicants with expertise in the areas of finance, HR and buildings. Further information can be found on the school website: Pensilva Primary School - Home

National Governance Association video [https://youtu.be/mRqJ\\_bFipHk](https://youtu.be/mRqJ_bFipHk)

Education and Employers Inspiring Governance video [https://youtu.be/llk135a\\_Qpk](https://youtu.be/llk135a_Qpk)



## **Volunteer day at St Ive community garden**

We're having a volunteer work day at St Ive community garden on

**Saturday 18th March at 10.30am until 2pm.**

Access to the community garden is through a gate at the end of St Ive churchyard or through a large metal gate in the field adjacent to the church car park.

We'll be turning compost and adding to the pile, cutting back brambles, clearing under fruit trees, planting a few fruit bushes and working on the dead hedge.

Please wear warm clothes, stout shoes and gardening gloves. If you are able to bring a fork or spade that would help, but don't worry if you can't.

We will be doing some strimming at one end of the field, so any children can assist with jobs away from those areas. Children must be accompanied by an adult.

The church will be open for refreshments. Bring your own sandwiches if you want.

This volunteer day is organised by Parish of St Ive Parish Community Resilience Project, now known as The Together Project. Contact [posicrp@gmail.com](mailto:posicrp@gmail.com) or phone 079339 60113 to let us know if you can come.

# Volunteer Days 2023



Charity No. 1094857

Your chance to get involved with helping to look after your Community woodland.

**Sunday 18th March  
11am - 3pm**

**\*\*\* Includes wholesome home-made soup, bread and cake! \*\*\***

This is a fun and rewarding way to give a little back to a local community project in its 20th year. It's a great opportunity to meet new people, learn new skills, spend time in the woods and have fun!

Come along and bring family and friends. Those that come along and help get the option to take a share of the timber (once we have put aside the few loads for sale to raise funds for the years' insurance.)

Accompanied children (and dogs on leads) very welcome! Bring hand tools and work gloves if you have them i.e. loppers, bill-hooks and bow saws. We will have a small supply available.

No experience necessary. Training given. Work to suit all abilities and ages.

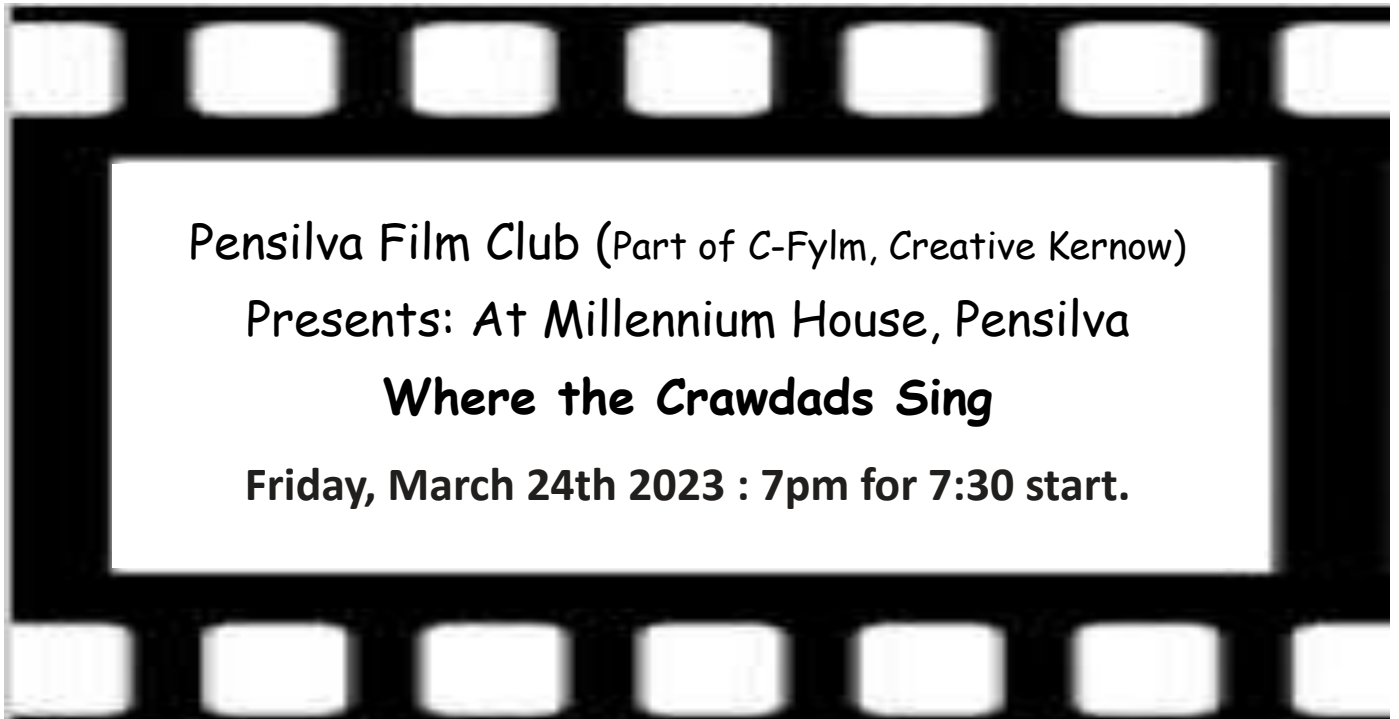
Come and share some good company and productive work, improving the woods for all that use it.

Please contact us if you would like to come along:  
[mail@pentiddy.co.uk](mailto:mail@pentiddy.co.uk)



## Pensilva Film Club

The history buffs amongst us will, no doubt, have enjoyed February's film – The Lost King – which followed the remarkable efforts of one amateur historian to locate the remains of Richard III who died at the battle of Bosworth Field. Hopefully those less interested in historical facts will still have enjoyed this delightful movie which was, at times, humorous as well as informative.



Our next film (Friday 24 March) is very different, in fact quite “outside the box” to those that we often present. “Where The Crawdads Sing” is the gritty story of a young girl who had to survive the perils of an isolated childhood in the American deep South during the 1950s. The much-acclaimed novel was one of the “must reads” during the height of the Covid pandemic and one of the best-selling novels of all time. The genre of this movie is drama/mystery/romance/thriller so expect all sorts!

As usual doors open at 7pm for a 7.30 kick-off. Members price is £3 with new or renewing members paying £6 to include the film. Membership lasts one calendar year. The Mel bar will be open pre-show. Any queries please contact Judy on 01579-208836 or [judy.two@outlook.com](mailto:judy.two@outlook.com). Looking forward to seeing both current and new members as always.

Pensilva Film Club in Association with C-fylm, part of Creative Kernow. Pensilva Film Club – in association with C-Fylm, part of Creative Kernow.



## From the Millennium House manager.

It has been great to have the sun make an appearance through February. It has been a cold snap and continues to be so. Millennium House will continue its Warm space during March. So please come along and make use of the warm space.

I am sure plenty of you have seen the pool table advertised at Millennium House. It has been great to see so many different families and friends come in and play a game of pool whether it be morning, noon or night! We will continue to let you know when the function room is available to come in and play a game of pool!

We have some great additions to Millennium House with the Pop Up Play Village, Sing and sign classes for parents and babies and from Friday 3rd March 2023 we will have Slimming World Back! There are so many other groups here and if there is something we don't have, but you would like please let us know and we will see what we can do for you! We have bands, dances, discos and more planned for Millennium House. Just check in the centre or keep an eye on our Facebook page!

It was a great turn out for the defibrillator training held at Millennium House! Hopefully it will not be needed, but it is comforting to know we have so many in the village who are now trained in how to use the defibrillator. Thank you to those who attended.

Have a marvellous March. - Vanessa

---

## **Report on the volunteer day at Pentiddy Woods on Sun Feb 19.**

The day was well-attended and gifted with good weather. It was good to meet new volunteers and catch up with the others that have been involved over the years. We enjoyed home made soup, sourdough bread, cakes and tea. There was a considerable amount of felled Ash moved and stacked. Brambles bashed to improve the paths. The next volunteer day is on Sunday 19th March at 11.00 hours. This is a community woodland and everyone is welcome. This is a great way of meeting people and making a difference to the woodland.



## Pensilva WI February report

What a sweet treat we enjoyed this month. Matt Shelly from Roly's Fudge explained how the founder's great, great grandmother's recipe is still in use today – just milk, butter and sugar. There are many new flavours, all natural – we tried lemon meringue pie, hot cross bun, sea salt (which is tricky to set in the winter!) and vanilla clotted cream, along with a vegan fudge. Roly's are always exploring new flavours and developing ways to cater to those with dietary needs – the members volunteered to be tasters at any time! From starting in 1987 in Torquay with just 1 shop, there are now around 47 shops in the southwest. The fun for Roly's staff is the theatre demonstrated in the shops, as all of the products are made there, in full view of the public.



The process can take around 1 ½ hours from start to finish and the weather (and even the shop's location) can make a difference to the time it takes to set. Matt answered lots of questions and was careful not to give any secrets of Roly's

fudge away, but was very generous with providing tasters and samples to try and some to take home too. We will all be visiting one of his shops in Looe very soon!

February Birthdays were Rosemary Farley, Margaret Hanger, Julie Gibson, Lynette Pook.

Competition winners: Flower of the Month: 1st Sue Turpin 2nd Jenny Rendle 3rd Verna Dawe. 4 Homemade sweets: 1st Alison Willis, 2nd Sue Hill, 3rd Frances Tucker.

Diary date: Sat 18th March – Marie Curie Tea 2.30-4pm at St. John's Church. Cakes, raffle and bring and buy. All welcome.

Our next meeting will be Wednesday 8th March, Millennium House, 7.15pm. It is our Annual meeting and there will be a talk by Adrian Wilton on 'The Secret Army'. New members and visitors are welcome to come along.

### **200 CLUB Draw Results for January 2022**

**1st No. 132  
Mrs S Cooper**

**2nd No. 41  
Mrs L Clayton**

**3rd No. 122  
Mrs S Prout**

## St Ive & District Gardening Club Report - February 2023

On Monday 6th Feb we were very pleased to welcome a legend of Cornwall, Philip Rodda of Rodda's Dairy. The first thing that comes to mind when you hear the name 'Rodda's' is Cornish Clotted Cream. We all know it's a Cornish delight, a thing of beauty, & you can't have a cream tea without it. But how did the Rodda family name become famous for it?

Go back to 1898 and Fanny Rodda (18 years old) and her family, who welcomed guests from London and enjoyed hosting delicious Cornish cream teas, jam first, of course. The guests couldn't get enough of the cream teas and would moan about not being able to take the cream back to London with them. Fanny thought this was a shame; surely something could be done with the cream to prevent it from going off so quickly. As well as cream, Fanny also made jam for the cream teas. She thought maybe the cream, like the jam, could be stored in glass jars. And that was how Fanny began to create clotted cream as we know it today.

There was no electric, no mains water, none of the technology of today. Cows were milked by hand, the water was rainwater collected from the rooves. To keep the cream cold there was a slab of metal & water (no refrigerators) It was very hard work. When Fanny perfected the process, people were needed to assist with all the tasks & her first stop was to ask (tell!) the family to help and so they did. The birth of Rodda's Creamery.

The Rodda family realised that clotted cream was a product in demand; they could provide it for others to enjoy. In Cornwall, cream was made by many farming families, so William Rodda decided to head further afield to gather interest. William travelled to London. He went around the grocery stores of London & many placed orders, then—and ever since.

One fact you may not know about the Rodda family is that at one point they were also in the turkey business! You might ask 'what do clotted cream & turkey farming have in common?' well it's milk. During the War, the family were banned from selling clotted cream as it was a luxury item. After the War they needed another business to support them. Turkeys can be fed milk (with their usual feed), so the 'waste' milk from making the clotted cream was given to the turkeys. Again Rodda's were a success in the turkey business, though it didn't last as long as the clotted cream business. Now Rodda's sell skimmed & semi skimmed milk to humans instead!

The Rodda family have carried on the same principles the family had before & after Fanny created the global success: honesty, for family & business: 'if you can't pay, you can't have'.

Clotted cream was born out of the kindness of Fanny wanting to give the best hospitality & give friends/family a gift to take away & remember Cornwall. Philip explained to us that while it took a while, Cornish Clotted Cream now has protected status, it must be made in Cornwall to be called "Cornish Clotted Cream".

So, when you are enjoying your Cornish cream tea, with jam first, remember Fanny Rodda, an 18 year old girl with a wish to share a Cornish delight with others.

Next meeting: Monday 6th March 7:00pm \*EARLIER START TIME\* **Annual General Meeting**. We would really like you to join us, you would be welcome. Relax, listen to the speaker below, have a cuppa & a biscuit & win a prize in the raffle if you're lucky.

**Speaker: Terry Faul Topic: The Two Marys.** Refreshments (tea/coffee & biscuits): £1.

St Ive Village Hall – PL14 3LZ We are a friendly bunch who would love to have new members. Feel free to come to the meeting with no obligation to join – we'd be pleased to welcome you.

## TWELVE YEARS OF WILDLIFE WATCHING IN THE PARISH OF ST. IVE

Since moving to the Parish at the end of 2009, I have been photographing and recording the wildlife which I see at my home on the edge of Pensilva on a daily basis. This month I will tell you a bit about a shy bird which we see from time to time, but never on the feeders...

### ... THE WREN



Although the wren is one of our commonest birds, (sometimes hitting the no. 1 spot) it is a shy bird and not the most commonly seen. However, we do see it from time to time in our garden and patch of woodland or down by the stream. Although they do appear on the lawn occasionally they tend to move around the edges and under the cover of plants. I often spot the movement before I spot the bird itself. It is our second smallest bird, with only the goldcrest being smaller. It is most easily identified by its short upward pointing tail, though it does occasionally hold it flatter. It becomes less cautious in the breeding season when the males will perch in the open to sing for the females. I remember coming round the corner of the house one spring and hearing the most wonderful trilling birdsong, before spotting the singer. It really is one of the best I have heard from any bird. Do listen out for it this spring.

Although they are found in a wide range of habitats including farmland, woodland, moorland, coasts, rocky beaches and islands, they are rarer in upland areas - probably because these are likely to be colder in winter. Looking at a distribution map, Cornwall appears to be one of the wrens' strongholds.

Although numerous, (estimated at 11 million breeding territories) wrens are classified with amber rather than green conservation status as their numbers can plummet in very cold winters. Wrens feed largely on spiders and insects and are constantly foraging amongst plants rocks and any likely crevices. They also sometimes eat seeds, berries and occasionally





even tadpoles. However, their main source of nutrition, (the insects and spiders) is much less plentiful in winter and very scarce during particularly cold weather. They maintain territories outside of the breeding season to preserve any local source of food. Despite this, they have been observed to congregate in boxes from dusk to dawn in order to keep warm.

This would usually be just a handful of birds, but on one occasion, 60 were found in a single box! The wren on the left was fluffed up against the cold in our garden, on a winter's day in 2018.

Male wrens establish breeding territories in the spring and build domed nests in trees or sheltered spaces. On several occasions I have also come across their nests in dormouse boxes when fulfilling my role as a licenced monitor. They will fill the available space with their nests which are built solely by the males. He will usually build several nests which he shows the female when she arrives and it is she who chooses which to use. The female will then line the nest with feathers before laying five to eight eggs. The female will then incubate them for 14 - 17 days. After another 15 to 20 days, the young will fledge, with both parents feeding them for a further two weeks.

The unchosen nests may not go to waste as males often install other females in some of them. It is also common for wrens to go on to have a second brood.

In folklore there is a story that tells of all the birds agreeing that the bird who could fly highest would become their king. The wren sat on the back of an eagle as it soared and then flew just a little higher so earning it the crown!



Keep your eyes and ears open for this delightful little bird all year round, but especially listen out for its glorious song in the spring.

HAPPY WILDLIFE WATCHING! Hilary



## Tree planting in the Parish. An update.

Since March 2020 (before the first Covid lockdown!) there has been a little box in the Pump every month encouraging people to let us know what trees they have planted in the Parish.

Three years later, it feels like it's time for a progress report!

In that same month of March 2020, our group (then known as Saint Ive Parish Climate Action Group) planted 90 trees and shrubs at St Ive Recreation Ground. In what may have been the first socially-distanced tree-planting event anywhere in the World, we planted 30 Crab Apples, 15 Rowans, 15 Hazels, 15 Elder shrubs and 15 Dog Rose Shrubs, as reported in the April 2020 Parish Pump.

In April / May 2021 our group was lucky enough to receive 1000 free oak saplings. These trees were going to be pulped because of the impact that the pandemic lockdowns had on tree sales at about that time. An enterprising chap in London managed to crowd-fund the purchase and we were the beneficiaries. Around 600 of these were planted in and around Middle Hill in Pensilva, with another 100 or so finding homes elsewhere in the Parish. The remainder were planted nearby, the most distant being 100 that ended up at Cotehele. We are grateful to everyone who helped in the Great Oak Tree Rescue!

In November 2021 we heard from some residents of Princess Road in Pensilva, who had planted one green and three copper beech saplings, to accompany a Silver Birch and an Acer planted 10 years previously; these two trees have now reached heights of around 9m and 6m respectively!

In March 2022 we were contacted by a lady in Gang who had planted eight fruit trees and was planning to plant several more native trees in the months ahead.

At about the same time our group was planting the St Ive Community Garden by the Church. We planted 14 fruit trees (apple, pear, plum), 3 walnut trees, and a hedge containing 350 mixed hazel, elder, oak, dog rose, beech, birch, hawthorn and rowan, as well as some "extras," 3 alder and a buckthorne.

Another Pensilva resident told us in July last year that, in the previous two years, she had planted a magnolia, a hawthorn, a plum, a cherry, two apples, a fig, a red birch, an acer, two oaks, & a 20 metre mixed hedge of beech, hawthorn and holly.

Most recently, we were advised about the planting in Pensilva of 12 spindles, 12 Scots pines, 2 Monterrey pines, and a single oak that was grown from an acorn collected from the grounds of the White House in Washington DC!

Well done to everybody who has planted trees! We are just entering the 2023 tree-planting season. Please do let us know what you plant!



MILLENNIUM HOUSE EVENTS GROUP PRESENTS

# ST. PATRICK'S PARTY

**MARCH 17**  
2023

**MUSIC FOOD FREE ENTRY**

FROM **7PM** AT  
MILLENNIUM HOUSE, PENSILVA,  
PL14-5NF

FIND US AT  
[MILLENNIUMHOUSE.ORG.UK](http://MILLENNIUMHOUSE.ORG.UK)

**Pensilva W.I**  
**MARIE CURIE**  
**TEA**



Saturday 18<sup>th</sup> March 2.30 pm to 4pm.

At St John's Church Pensilva.

Bring and Buy. Raffle.

£4.00 entry to include tea.

All welcome.

# Yn Poynt Da

We're  
Back  
!

Bring your own drinks and snacks  
Tea and coffee will be served

Tickets £5  
Pay at the door.  
To reserve your place:  
for Upton Cross  
phone  
Louise 01579 364097  
or  
Elaine 01579 370281

for Golberdon  
phone Caroline  
01579 371445  
07896 106781  
or email [caroline@  
wetdogcreative.co.uk](mailto:caroline@wetdogcreative.co.uk)

**RAFFLE**

## Old And Proud

JOIN US IN  
THE PARISH HALL UPTON CROSS  
ON SATURDAY 25TH MARCH  
PERFORMANCES AT 2.30 & 7.30

OR IN THE PARISH HALL GOLBERDON  
ON SATURDAY 1ST APRIL AT 7.30PM





**St. Ive Village Hall PL14 3LZ**  
**Children's Indoor Teddy Bear's Picnic**  
**With music and games**



**Saturday 25<sup>th</sup> March**  
**4pm until 6pm**

**Bring your teddy along for tea**  
**and a cushion to sit on.**

**Bookings please contact**  
**Amanda: 07703393070**

# St Ive Parish Church



*You are invited*

**Maundy Thursday: a shared  
community supper**

**Thursday 6<sup>th</sup> April 2023**

**6:00pm**

If you can bring a plate/bowl/dish of food: lamb based, vegetables, rice, anything of your choice, sweet or savoury to share with others. If you can't, come along & enjoy what others provide

*A time to be together*



## Parish Lift Share

After our article in the November Pump one local resident got in touch to tell us about Liftshare. He says;

*"I joined Liftshare. All I had to do was enter my journeys and travel times, which resulted in one "Buddi", who lived in Callington - we both worked in Torpoint. If I had still been working in Plymouth, there were many possible solutions. We used to meet at St Ive, and on a good week, we both were driving twice a week, saving two journeys each or 90 miles a week. My Buddi only worked half a day on Friday, so there were only four days available to share. If one of us had to use a car during the day, we did the driving. It saved an absolute fortune. The beauty of Liftshare is that you can choose whether to accept or decline a Buddi. This can be used for infrequent or regular journeys, even going shopping, and if individuals do not have computer access, there are options at Millennium House."*

Information about Liftshare can be found here: <https://liftshare.com/uk>

We have also had 2 people step forward to say they are willing to offer lifts: One is offering lifts to Liskeard from Pensilva every weekday morning to get a 6.22am train. Returning after 5pm.

The second person is based in St Ive and is willing to car share on an ad hoc basis, e.g. trips to Callington/Tesco, Liskeard, etc.

If you are interested in carsharing please email [posicrp@gmail.com](mailto:posicrp@gmail.com) or message us on Facebook at posicrp.

### **How to get involved:**

If you would like to be part of the Together Project and /or the Resilience Project, in any way, big or small, please contact: [posicrp@gmail.com](mailto:posicrp@gmail.com) or phone 07768 130520.

**Follow Us:** Intagram: togetherproject2022

Facebook: The Together Project





## ***Our Foodbank needs you!***

In 2021 the local Foodbank helped 2789 people; in 2022 this number leaped to 4124.

All of us are only too familiar with the energy crisis and the escalating cost of living, particularly the cost of food. And this is reflected dramatically in the amount of work done at the Foodbank these days. Over a thousand people were helped during last December alone. Christmas is often a difficult time financially, of course, but last Christmas over three times more people were helped than in December 2021.

Last year, Liskeard & Looe Foodbank moved from its site at Barras Place in Liskeard to new premises. It needed more space to cope with the increasing demand and now has two sites: Client Services, at 21 Dean Street (at the back of the Westbourne car park, on the right of the Co-op); and a warehouse, at Unit 2 Trevecca Industrial Estate (off Culverland Road).

We are immensely grateful to all of you whose generosity has allowed the Foodbank to keep up with this rapid growth in local need, in the face of an economic crisis which affects almost all of us..... *Now we need your time!*

We especially need **volunteers** for:

The warehouse (on Tuesdays and Thursdays);

Van drivers (deliverers work in pairs).

Church liaison.

Social media and website (updating etc.)

Admin (familiar with Word and Excel);

PR & Communications (e.g. giving talks to groups etc.)

Fundraising (e.g. organising events etc.).

If you have a few hours a week to spare, would like to help with this vital community service and can see yourself in one of these roles, please call

**Liskeard & Looe Foodbank at 07512 011452;** or email

**[liskeard.foodbank@gmail.com](mailto:liskeard.foodbank@gmail.com)**.

Thank you, St. Ive Parish!

A message for **Marina**, who left a voicemail for *All Being Well*.

Sorry, but the phone number you left for us to call you back did not record very well, and we haven't been able to make it out.

If you would like to leave us another message, or call by, we would love to speak with you!

Thank you.

## *All Being Well*

**We are still open for three mornings a week. A maximum of six members can now attend at one time.**

### Opening hours:

Monday, Wednesday and Saturday, 9am to 1pm.

Maximum six members at a time for each of three slots within each session: 9:00 to 10:20, 10:20 to 11:40 and 11:40 to 13:00

### **Prior booking is essential**

To book yourself in or for any enquiries, call in at the gym or telephone on **01579 363890**, during the opening hours listed above.

**22 years working in our local community to improve health, fitness and well being.**

## **Badminton at Millennium House**

Come and join our relaxed and friendly group.

**Mon & Tue 7:30 - 9:30pm**

For further info phone Nigel or Carol on 01579 363594 or 07885 798370

# ST JOHN'S CHURCH, PENSILVA

A united congregation of the Church of England & the Methodist Church

## **SERVICES March 2023**

Sunday 5<sup>th</sup> 11.00 am Church of England Holy Communion

Sunday 12<sup>th</sup> 11.00 am Mr N Rowe Methodist Local Preacher

Sunday 19<sup>th</sup> 11.00 am *Mothers' Sunday* Mr G Cox & members of the congregation  
3.45 pm Tea Time Church for children & their families

Sunday 26<sup>th</sup> 11.00 am Mr B Hocking Methodist Worship Leader & members of the congregation  
5.00 pm Food for Thought

**Thursdays** 10.00 am Morning Prayer Fellowship

## **March EVENTS** Please see posters for full details

Thursday 2<sup>nd</sup>, 9<sup>th</sup>, 16<sup>th</sup>, 23<sup>rd</sup>, 30<sup>th</sup> 12.00 - 1.30 pm Lent Lunch

Wednesday 15<sup>th</sup> 3.00 - 5.00 pm Good Grief Café

Sunday 19<sup>th</sup> 3.45 - 5.00 pm Tea Time Church for children & their families

Thursday 23<sup>rd</sup> 2.00 - 4.00 pm Memory Café

Tuesday 28<sup>th</sup> 2.00 - 4.00 pm Knit & Natter

*For further details or if you know of any illness or need in the village, please call Geoff, 362698 or Frances, 363718*

## **Unity Methodist Church St Ive with Bealbury and Blunts**

Meetings at St Ive Village Hall unless stated otherwise

### ***Services for March 2023***

<b>Sun 5<sup>th</sup> Mar.</b>	10.30 am	Keith Mutton
<b>Sun 12<sup>th</sup> Mar.</b>	10.30am	Café Church with Dave and Clare from the Lighthouse Community Centre
<b>Sun 19<sup>th</sup> Mar.</b>	11.15am 6pm	United Service at St Ive Parish Church. Greenshoots United Service at St Ive with Rev Li Selman
<b>Sun 26<sup>th</sup> Mar.</b>	10.30am	Mr Bernard Melling

## Millennium House Community Transport

**Do you need transport to and from the doctor or hospital?**

Millennium House Community Transport's aim is to connect local communities and reduce social isolation.



If you need transport to Hospital, doctors or vaccination and have mobility issues, or are unable to drive to your appointment, please call Millennium House on:

**01579 362919 or 01579 363096**

and we will try to help.

To volunteer as a driver please call Millennium House on

**01579 363096.**



## Tamar Area Prostate Support (TAPS)



### DON'T IGNORE THE SIGNS

- A need to urinate frequently especially at night
- Difficulty in starting to pee
- Weak flow
- Feeling that your bladder has not emptied fully

If you would like to know more about us please contact one of the steering group listed below or email [tapsinfo555@gmail.com](mailto:tapsinfo555@gmail.com)

**Come and join us on the first Tuesday of the Month  
10.00 at the Compton Park Engine House Callington  
for a friendly chat and a coffee.**



**Paul Mansell 01822 832179 - Harry Lawson 01579 383258**

**John Stewart 01822 833343 - Stephen Williams 07735 389883**

**Albert Doidge - 01822 832471**

**Prostate Cancer UK is a registered charity in England and Wales (1005541)  
and in Scotland (SC039332). Registered company 02653887.**

## **PENSILVA VILLAGE HALL**

**We are now open and back in business!**

Anyone wishing to book the hall for meetings, birthday parties or fundraisers, please contact Peter or Jackie Browning on **01579 363212** or email **[peterpensilva@gmail.com](mailto:peterpensilva@gmail.com)**



Please note that as well as hall rent there is a coin meter for

## **MOBILE LIBRARY**



**The County Mobile Library** visits our area every four weeks, always on a Friday. You can now browse the shelves again, but you can still pre-order books if you prefer.

Next visits: **Mar 10 2023.**

Stops at The Victoria Inn, Pensilva from 10.25 to 10.45am; and Quethiock bus stop from 11.00 to 11.25am.



## **Struggling with Sight Loss?**

iSight Cornwall offers practical help to people living with sight loss in Cornwall including:

Low Vision: Advice for low vision aids

Assistive Technology: Advice on products

Benefits Advice: Assistance to claim entitlements

Equipment Demonstration: Advice on gadgets

Social Clubs & Activities: Links to clubs & activities in the county

For more details Telephone 01872 261110 or visit

[www.isightcornwall.org.uk](http://www.isightcornwall.org.uk)



# Ever tried... Ladies Walking Netball?

**Come along to Millennium House, Pensilva**



**Thursdays  
4.00pm - 5.00pm**

**£2 per session**

**For further info contact [rosemaryfarley@gmail.com](mailto:rosemaryfarley@gmail.com)  
or Tel. No. 01579 384810**

**Interested in  
joining a group of  
birdwatchers?**



**Join the  
EAST CORNWALL  
BIRDERS**

All levels of experience welcome, beginners to experts. We learn from each other. Bird Outings on the first Thursday of each month, to coast, estuary or moor etc. We focus on east Cornwall and west Devon, with occasional trips further afield.

**Interested?      Want more information?      Contact: Angus Parker**  
**E-mail: [angusmmparker@gmail.com](mailto:angusmmparker@gmail.com)      Mobile: 07860 109586**

## **CALLING ALL COUNTRY DANCERS AND CALLERS**

Pensilva Country Dancing Club has now started up again and would welcome new members. We would also welcome anyone who would be willing to take a turn at calling for the dances - help can be given for the learning process!

We meet fortnightly in the Art Room at Millennium House, Pensilva for a couple of hours on a Thursday evening from 7pm to 9 pm. If you are interested in joining or calling, please ring Frances on 01579 363718.

# MILLENNIUM HOUSE

COMMUNITY CENTRE, AND DYNAMIC EVENT  
VENUE IN THE HEART OF EAST CORNWALL



#### Conferencing

We have four meeting rooms for all your corporate needs.



#### Function Room

For parties, discos, or just larger events; with adjoining kitchen and bar.

### Our Facilities

#### Sports Hall

For sports or larger events requiring a stage, the sports hall is our biggest venue.



#### Coffee Shop

Providing tea, coffee and cake. And for something stronger, there's the Mel, a licensed bar.



**Enquire today:**  
**01579 363096**

[www.millenniumhouse.org.uk](http://www.millenniumhouse.org.uk)  
PRINCESS ROAD, PENSILVA, PL14 5NF

## What Do We Do?

From wedding to wakes, kids or adults, corporate or community, we can host and cater your event. If you have an idea that's not covered here, get in touch and see if we're the right venue for you.

#### We're also home to:

- ✓ The Mel bar
- ✓ All Being Well Fitness Centre
- ✓ Post Office
- ✓ Sunflower Park kids playground
- ✓ Extensive playing fields
- ✓ Community Library



Action for  
Children



# NEW YOUTH GROUP FOR 11-19 YEAR OLDS

UP TO 25 YEAR OLD WITH SEND

EVERY FRIDAY 5.00-7.00PM

*FREE OF CHARGE & OPEN TO ALL.*

VENUE: MILLENNIUM HOUSE, PRINCESS RD, PENSILVA,  
LISKEARD PL14 5NF

ACTIVITIES, DRINKS/SNACKS & A CHANCE TO HELP BUILD A  
YOUTH LEAD GROUP IN YOUR AREA.

FIND OUT ABOUT US @:

[WWW.SERVICES.ACTIONFORCHILDREN.ORG.UK/KERNOW-CONNECT](http://WWW.SERVICES.ACTIONFORCHILDREN.ORG.UK/KERNOW-CONNECT)





# LENT LUNCHES

Every Thursday during Lent  
From 2<sup>nd</sup> March to 6<sup>th</sup> April  
Between 12.00 and 1.30 pm



Please come & enjoy  
a simple meal of homemade soup  
with a roll & cheese,  
coffee or tea.

*Donations  
in aid of church funds*

We can grieve for many reasons:  
the death of a friend or relative;  
the diagnosis of a friend or relative  
with dementia or a terminal illness;  
the loss or illness of a pet;  
the loss of a job;  
homelessness;  
loss of mobility or driving licence;  
closure of your Church or Chapel;  
loss of freedom;  
the closing of a support group;  
the loss of stability in society.  
Any of these can cause us to  
grieve, so the Good Grief Cafe is  
for anyone who is grieving in any  
of these ways and no doubt  
there are others too.  
So please feel free to come along  
and eat our cake, drink our tea  
and just chat if you want to,  
or just listen if you don't.  
All are welcome.  
Please use this as an opportunity  
to invite someone to  
come with you.

## Good Grief Cafe



*St John's Church*

*Wednesday 15<sup>th</sup> March 3.00 to 5.00 pm*

*For further information, contact Geoff 01579 362698*



# Teatime Church



**For children and their families**

**Sunday 19<sup>th</sup> March**

**3.45pm**

**St John's Church  
Pensilva**

**Sharing a Bible Story**

**Playing Games**

**Singing and Praying Together**

**Eating Tea**



For more information contact: Rev Li Selman [revliselman@icloud.com](mailto:revliselman@icloud.com)



ST JOHN'S  
CHURCH  
PENSILVA



*Sunday  
19<sup>th</sup> March*

*Refreshments  
from 10:30 am*

*11:00 am  
Praise and  
Thanksgiving*

# CELEBRATE

those who care for us on

# MOTHERING SUNDAY

worship for people of all ages

\*\*\*\*\*

Share a gift of flowers  
Come & give thanks

\*\*\*\*\*

Enjoy refreshments before the service

# Pensilva



# MemoryCafé

Thursday 23<sup>rd</sup> March  
2.00 to 4.00 pm

If you have  
memory problems  
or  
you are a carer  
for somebody  
who does  
and  
would like to  
meet others  
who understand  
your situation  
then join us at  
St John's Church

Contact Geoff 01579 362698





# FOOD for THOUGHT



SUNDAY

26<sup>th</sup>

March

5.00 PM

St John's Church  
Pensilva

A time of fellowship  
and informal worship  
with a shared afternoon tea



For further information  
& to arrange transport:  
Geoff 01579 362698



## knit and natter

Do you enjoy stitching,  
knitting, crocheting?

Join our friendly knit and natter group.  
Come and meet new friends and swap tips  
and ideas - all ages and abilities welcome!

Drop-in!

There's no charge  
for this activity but there  
is a Donation Box if you  
would like to make a  
cash contribution

**Tuesday  
28<sup>th</sup>  
March**

**St John's  
Church  
Pensilva  
on the  
last Tuesday  
of the month**

**2.00  
to  
4.00 pm**

**Contact Kathleen  
01579 363686**

# Bargain Corner Free Ads up to £50

Ads are free for items up to £50. £5 charge for items over £50. Please leave a note at Millennium House reception, ring the Parish Office on **01579 363096**, or email **parishpump@btconnect.com**.

**\*\*\* Please let us know when your item has sold \*\*\***

HP Printer Ink. 2 pack, 304, Black & Tri-Colour. **£10. 01579 362066.**

Kirsty **exercise bike. £50 o.n.o** (in aid of charity). Can deliver in Pensilva area.  
**01579 363833**

Addis Rattan 50 litre **Laundry Basket** in Charcoal. Only 6 months old. New and unused. **£10. 01579 363565.**

Daler **canvases for Oils or Acrylics:**  
20"x24" (10); 23"x32"(4); 32"x40"(1)  
**£40 for all the above.**  
(A few larger canvases and a large wooden easel available.)  
**Please call 01579 362574 in afternoon.**

**Two-seater sofa**, Only 6 months old. Greyish in colour. **£150.**  
**01579 347403 or 07890 365598**

**Four motor biker jackets at £10 each**  
1. Red/Black, Frank Thomas, Size 44.  
2. Black leather, ladies, Size 12-14.  
3. Black leather, Size medium.  
4. Black/Red, Size XL.  
**All in good condition**  
**01579 346986.**

**Car roof box.** Opens both sides. Only used once. Full instr's. L 2300mm W 820mm H 360mm. **£50. 01579 362217.**

Axminster 2 speed forward and reverse **drill**, in GWO **£10** and a **Power Planer PPL800 - 800W** in GWO requires a new blade **£10** or **£15** for the two items.

**2 Empty Dewalt Tool Cases**, 1 general tool box with free Dewalt cordless drill no battery. **£30.**

10 wooden **moulding planes** Usable cond. 1 wooden spirit level & scribe. **£50.**

Six coils of **industrial steel cable** now surplus to requirements **£35** the lot.

New 12'x3'1" good quality hard **vinyl flooring**, light/med brown wood effect **£15.**

**01579 384658** (Safe Distancing if reqd.)

Ladies Rocketdog wedge **flipflops** black with red and mixed colour beads on material, size 5. still in box as new paid **£10.**

**Upton Cross/Minions area**  
**07368 528398.**

**Please let us know when your items have sold.**



# ADVERTISING SECTION

**TO OUR ADVERTISERS:** Firstly, thank you for advertising in the St Ive Parish Pump. Your support enables us to provide a much-valued monthly newsletter to our parishioners, while also giving businesses in our area affordable access to a sizeable local market of grateful consumers.

New advertisers are asked to pay in advance. Advertisers who are behind with their payments will have their adverts removed from subsequent editions until payments are brought up to date.

Advertising prices:	<u>Net of VAT</u>		<u>Including VAT</u>	
	<u>1 month</u>	<u>12 months</u>	<u>1 month</u>	<u>12 months</u>
<b>Quarter Page:</b>	£ 8.33	£83.33	£10.00	£100.00
<b>Half Page:</b>	£ 16.67	£167.67	£20.00	£200.00
<b>Full Page:</b>	£ 27.50	£275.00	£33.00	£330.00

Thank you, once again, for advertising in our newsletter. We hope that you will continue to do so, and we wish you every success with your business.



## FOR ALL YOUR CELEBRATION NEEDS

Visit our shop: 12 Fore Street, Callington

Call us on 01579 384386

Find us on Facebook or visit our website:

[www.victoriaeyton.co.uk](http://www.victoriaeyton.co.uk)

- Helium Balloons - Balloon Arches -
- Bespoke Balloon Designs -
- Personalised Balloons - Partyware -
- Huge selection of greetings cards -
- **Weddings, Parties and Corporate events catered for.**

## ADVERTISE HERE!

For just **£10 per month** inc VAT

**2 MONTHS FREE** for a 12 month order. i.e. **£8.33 inc VAT**

per month for 12 mths

See the full tariff on page 3

**One thousand copies per month** distributed free of charge to households in the Parish of St Ive.

## MICHAEL HOSKINS

ALL ASPECTS OF DECORATING, INSIDE OR OUT

PROPERTY MAINTENANCE

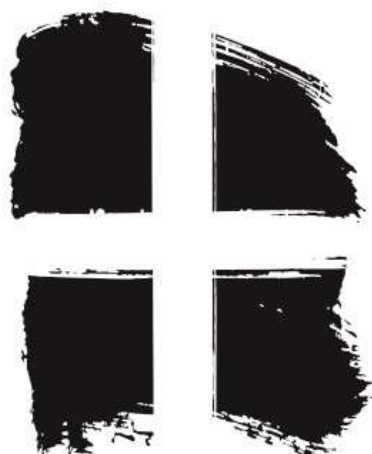
STONEMWORK A SPECIALITY

FIREPLACES AND STONE WALLS

PATIOS AND DECKING

REASONABLE RATES

PHONE MIKE ON 07715 521044



**Right-on**   
**Plumbing &**  
**Maintenance**

*Gareth Haines*

**Tel: 07947353682**



# Colin Swinburne Electrical Services



All aspects of domestic and commercial electrical work.

Inspection and testing (EICRs), fault finding, new installations, rewires, consumer unit replacement, additional sockets, lighting upgrades, garden power and lighting, extractor fans and more.

Electrician in Pensilva. Free advice and quotes.



CSES@btinternet.com 07974499138



## Group Travel

Day Trips & Coach Holidays

Enterprise Park, Midway Road, Bodmin, Cornwall PL31 2FQ Tel: 01208 77989

### Coach Excursions & Tours 2023

24th -29th April	The Lake District, Train, Cruise & Beatrix Potter
Tue 16th May	Steam Train to Minehead and Lynton & Lynmouth Cliff Railway
Tue 13th June	Hestercombe House & Gardens
Tue 27th June	Train from Paignton to Kingswear & Cruise
Tue 11th July	Dartmouth to Totnes
17th – 21st July	Exmouth & River Cruise to Exeter
18th August	Visit Bournemouth
1st – 3rd Sept	RHS Rosemoor Gardens Flower Show
24th - 30th Sept	Burghley Horse Trials
	Cairngorms, Scotland

Visit our website for all our excursions & tours  
and download a PDF version of our 2023 brochure.

Call: Dawn or Robin on 01208 77989 for bookings and brochure  
website: [www.grouptravelcoachhire.co.uk](http://www.grouptravelcoachhire.co.uk)  
email: [grouptravelcornwall@btconnect.com](mailto:grouptravelcornwall@btconnect.com)

### Bodmin MOT Centre

**01208 77989**

Garage Services  
MOT Testing Station  
Classes 4, 5 & 7  
Servicing & Repairs  
High Vehicles & Motorhomes  
Brake Test & Headlight Alignment  
Pre MOT Inspections  
Annual & Interim Vehicle Servicing

Commercial interim inspections available  
including brakes and lights

Helping you stay compliant

Bodmin MOT Centre  
at Group Travel  
Enterprise Park, Midway Road,  
Bodmin, Cornwall PL31 2FQ

# Trystan Phillips



## Carpentry/Joinery & Property Maintenance



### 35 Years' Experience

Fully Insured Including Public and Product Liability

All aspects of Carpentry undertaken including:

Bespoke Carpentry & Joinery , Kitchen Installations, Doors, Partitions, Skirtings, Architraves, Shelving, Timber Floors renewed & repaired, Laminate Floors fitted, Timber Windows repaired including 'Sliding Sash'. Plus General Property Maintenance, including Painting/Tiling & much more!

07397 153792    [trystanphillips carpentry@gmail.com](mailto:trystanphillips carpentry@gmail.com)    01579 363150

### Debbie's Care Services

**Tel. 0777 948 3230**

Hello, my name is Debbie. I am a local lady who has been working in the community for over 30 years.

I provide the following services and more!

- Assisting bathing / showering
- Preparation of meals
- Cleaning / Shopping / Ironing
- Companionship / Friendship and emotional support
- Assisting with mobility
- Day, Evening and Night Care

New, High-Quality, Local  
Decorating Service

### EDEN SERVICES



Interior / exterior decorating, including spraying

All work fully insured and guaranteed

References available

High quality work at sensible prices

Over 25 years experience

Call Julian for a free, no obligation quote

**Mobile 07775 515036    Office 01579 641129**



Find us online:  
fresh\_prop.co.uk



Top quality carpet, upholstery & hard floor  
cleaning services based in Callington

Long-established cleaning professional

Domestic & commercial

NCCA qualified & member

Steam cleaning & dry carpet cleaning

Tile & grout + natural stone clean & seal

Vinyl & LVT including Amtico & Karndean

Call 0800 3893393 or 07905 188459

Or email [nevil\\_fresh@msn.com](mailto:nevil_fresh@msn.com)

## TRADITIONAL STONE SERVICES

CLASSIC & TIMELESS  
STONE MASONRY  
AND LETTERING

MEMORIAL CLEANING

COMMISSIONS TAKEN

**01579 363693**

OR

**07507 782282**



Domestic Electrical  
Property Maintenance  
Interior & Exterior Work  
Carpentry :: Decking  
Kitchens :: Bathrooms  
Wall & Floor Tiling  
General Plumbing

**MCCARTHY PROPERTY MAINTENANCE**

**Electrical Safety  
Register**

incorporating  
ELECTSA + ECA  
Certification Ltd

HIGHLY REGARDED LOCAL BUILDER  
COMPETITIVELY PRICED  
COVERING THE SOUTH WEST

Contact Dominic

07968 599 675

01579 362 945

[info@mccarthypropertymaintenance.co.uk](mailto:info@mccarthypropertymaintenance.co.uk)

[www.mccarthypropertymaintenance.co.uk](http://www.mccarthypropertymaintenance.co.uk)



Maintaining and preserving our  
countryside for the benefit of all

Dry Stone Walls

Cobblestoning

Stone faced walls

Hedgelaying/steeping

Land management

All aspects of Landscaping

Mobile: 07539 296799 or

Email: [info@just-in-stone.co.uk](mailto:info@just-in-stone.co.uk)

# Westwood Garden Maintenance



*Antony Watts*

*Grass Cutting, Clearance*

*Weeding, Turfing*

*Hedge Cutting*

*Patio Cleaning, Planting*

*Regular Visits / One-off Contracts*

*Residential & Commercial*

*FREE ESTIMATES*

01579 362019 [www.westwoodgm.co.uk](http://www.westwoodgm.co.uk) 07952 094472

## JPH Plastering and Rendering

Internal plastering

Internal and external rendering

Internal/external painting & decorating

Property maintenance

Landscaping and land management

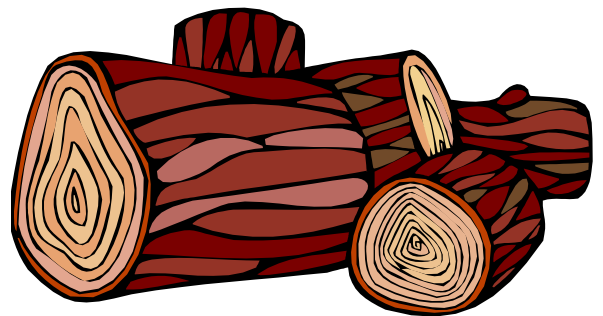
For estimates and no obligation quotes

contact Justin on:

**07539 296799** or

**info@just-in-stone.co.uk**

## SEASONED LOGS



**MIXED LOAD**

or

**HARDWOOD**

**Tel. Jonathan**

**Mobile 07966 070725**

or

**01579 363157**



## **PENROSS**

Rosecraddock Lodge Holiday Bungalows

(Between Pensilva & Liskeard)

Perfect for family & friends coming to visit!



Sleeps 4

Sorry no pets or smoking

Tel: Julie 01579 362221

Email: penhargetfarm@gmail.com

## **NICOLA GREENE**

BSc (hons) Podiatry MChs

HPC Registered Chiropodist/Podiatrist

**Home Visit Practice treating all  
your foot care needs:**

- Nail Cutting
- Corns and Calluses
- Thickened Nails
- Dry Cracked Skin
- Verrucae
- Foot Pain
- Diabetic Foot Assessments
- Wound Care

**T: 01579 590027**

**M: 07786164205**

**E: nicki\_greene@yahoo.com**

# **Matt's Windows**

## **Repair of Windows, Doors & Glass Unit Replacement**

**Making draughty windows great again!**

**T: 01579 641228**

**M: 07533 387368**



KV Accounting Solutions

ACCA

## Local Accountant offering fixed fee accounting services

With over 20 years experience, I am a fully qualified, friendly, local accountant

- |   |  |
|---|--|
| ✓ Annual Accounts for Sole Traders and Partnerships | ✓ Self Assessment tax returns                        |
| ✓ Book Keeping & Payroll                            | ✓ iXBRL tax filing                                   |
| ✓ Personal Tax Planning                             | ✓ Tax investigation Fees Insurance                   |
| ✓ Company Accounts                                  | ✓ Company Secretarial work                           |
| ✓ Business Support & Advice                         | ✓ Tax calculations for Sole Traders and Partnerships |

Kate Vaughnley FCCA - Chartered Certified Accountant

Website : [www.kvaccountingsolutions.co.uk](http://www.kvaccountingsolutions.co.uk) or Email : [katevaughnley@gmail.com](mailto:katevaughnley@gmail.com)

Telephone : 01579 364083



BA

Gas Services

NATURAL GAS - LPG - OIL

BOILER INSTALLATION

BOILER SERVICE & REPAIR

LONG WARRANTY FREE QUOTES

07859848288

[bagasservices@outlook.com](mailto:bagasservices@outlook.com)

533335

GAS  
safe  
REGISTER



Kiln Dried Firewood  
Kindling & Firelighters  
Eco Heatlogs  
LPG Bottled Gas  
Patio, BBQ & Camping Gas  
Coal & Smokeless Fuel



**0800 8021 223**  
sales@loganslogs.co.uk  
www.loganslogs.co.uk

## Heel 2 Toe Footcare

Tired Aching feet.

Corns, Hard skin, Verruca.

Fungal infected toe nails, or  
toe nails require cutting.

Diabetic feet also treated and  
regularly checked.

I can help to keep your feet  
looking and feeling good.

I am a trained Foot Health  
Practitioner to Diploma Level, fully  
insured & DBS checked.

I can do home visits via an  
appointment.

Call Penny: **07746 926146** for  
further information. **Please note  
new number May 2021.**

# J. J. Child

Plumbing and heating engineer.

Oil appliance service, repair and breakdowns.

Over 30 years experience

Call John: 01579 362336 or 07837 921086



## PMB Book Keeping

Friendly Book Keeping Services:

Purchase and Sales Ledger  
Bank Reconciliations  
VAT returns - Making Tax Digital  
Self Assessment Tax Returns  
And More

Fully Qualified, Insured and  
Licenced

T: 01579 683624

E: pmboutsourcing@outlook.com



Fencing  
Paths & Steps  
Turf & Astro turf  
Driveways  
Retaining walls  
Digger work  
Footings & foundations

Patios  
Rendering  
Decking

**And more**

Free no obligation quotes

**Call Rob on:**

**07518246666 or  
01579 641802**

## Debbie Hicks - Counselling and Psychotherapy

*Caring, confidential counselling for all.*

*I work in a therapeutic relationship to  
help you understand yourself better.*

*I offer a warm, approachable, relaxed  
environment for you to untangle your  
thoughts and emotions.*

[www.debbiehickscounselling.co.uk](http://www.debbiehickscounselling.co.uk)

Email: [debbiehicks10@gmail.com](mailto:debbiehicks10@gmail.com)

**07851 133782**

*More info on my  
website or by  
contacting me.*



# Window Cleaner Window Cleaner

**Also any upvc cleaned**

**i.e. fascias, gutters, etc.**

**gutters cleared & unblocked**

**Please phone Rob**

**07709 053464**

# Window Cleaner Window Cleaner



# INDEPENDENT FAMILY FUNERAL DIRECTORS

Supporting families to arrange funerals with sensitivity, dignity and care.

- Flexible, caring approach, tailor-making funerals to suit your needs and budget.
- Open and transparent, affordable pricing.
- Free bereavement support sessions, open to all in our community, first Wednesday of the month, 10am - 12pm.
- Prepayment Funeral Plans available

For details of our services and prices, visit our website.



**01579 362358 | [www.fdhallfunerals.co.uk](http://www.fdhallfunerals.co.uk)**



Avalennek, Caradon Town,  
Upton Cross, Liskeard  
Cornwall PL14 5AR  
Telephone 01579 363598  
Mobile 07901 538132  
[chrisrounsevell@tiscali.co.uk](mailto:chrisrounsevell@tiscali.co.uk)

## HOG ROAST EQUIPMENT HIRE AND MEAT SUPPLY

Hog Roasts For Those Special Occasions  
Self Catering or Hassle Free Service  
Everything done to your special requirements

**CHRIS ROUNSEVELL**  
TRADITIONAL BUTCHER

Come and visit our recently updated  
**Tile & Bathroom showroom** in PENSILVA

We offer a generous discount to all Pump Readers

Unit 24 Pensilva Ind Est, St Ive Road, Cornwall PL14 5RE 01579 362264



**CORNWALL TILE**  
CENTRE

Pensilva Showroom

Open Mon - Fri 8.30am - 5pm  
Saturday 9.00am - 1pm

Tiles & Mosaics for:

Bathrooms & Kitchens Living Areas Conservatories  
Patios & External Areas Wet Rooms & Spas Swimming Pools  
& All Commercial Applications

 atlas concorde

[www.cornwalltile.com](http://www.cornwalltile.com)

**OPEN FOR RETAIL, TRADE & COMMERCIAL ENQUIRIES**





THE HOME OF WOOD

## BULK DISCOUNTS AVAILABLE ON OUR 30 YEAR SERVICE LIFE POSTS



OUR GOLD TREATED STAKES AND POSTS ARE THE ONLY ONES AVAILABLE IN THE UK THAT ARE APPROVED BY THE WPA BENCHMARK FOR 30 YEAR SERVICE LIFE

For more information please contact one of our team



Bond Timber, Bake Sawmill, Trerulefoot, Saltash, Cornwall,

PL12 5BW

01503 240 308 [stacy@whbond.co.uk](mailto:stacy@whbond.co.uk)



# Pensilva Stores

**Amazing Value**

**Premier**  
a great deal more from your local store  
Mon-Sat. 7:00 AM. - 9:30 PM.  
Sunday 8.00 AM. - 9:30 PM.

- ✓ Fantastic Special Offers every month!!! (See store leaflets)
- ✓ Come and Check out our great deals on Wine, Beer and Spirits
- ✓ Local Produce: Homemade Butter and Clotted Cream, Meat from our local butcher
- ✓ Cornish Fresh Fruit and Vegetables
- ✓ Fresh Bread, Pasties and Cakes
- ✓ Take Away Coffee, tea and hot chocolate
- ✓ Newspapers and Magazines, Greeting Cards
- ✓ Paypoint, Lottery

\* **Free to use ATM** \*

\* **Card Payment** \*

*Friendly Staff + Service with a Smile !!!*

**Pensilva Stores is a family run business who have been serving local people and visitors for more than 21 years.**

Higher Road, Pensilva, Liskeard, Cornwall PL14 5NQ

Tel: 01579 362547

# MENDOLOGY

## Garage Door Specialist

- Repairs
- Servicing
- Installations

Out of hours service  
call Dave anytime 07974 442645


**MENDOLOGY** COMMERCIAL DOORS LTD  
www.mendologydoors.co.uk

**01579 363760**



# PensilvaCars

01579 363516

- ✓ MOTs Class 4
- ✓ Service
- ✓ Repair
- ✓ Tyres
- ✓ FREE Courtesy Car
- ✓ Car & Van Sales
- ✓ Diagnostics
- ✓ Air Conditioning
- ✓ 

**We have offered a supply, fit & balance of tyre service for 10 years at competitive prices.**

**Most of our tyres can be supplied the same day.**

**LOCAL RECOVERY £45.00**

**[www.pensilvacars.co.uk](http://www.pensilvacars.co.uk)**

**[pensilvacars@hotmail.co.uk](mailto:pensilvacars@hotmail.co.uk)**

We can service and repair your car to manufacturer specification, keeping your dealer warranty without main dealer expense.





# Pensilva & St Ive Post Office Service

**Pensilva:** Through the coffee shop on the 1<sup>st</sup> floor of Millennium House

**Tuesdays:** 9am to 1pm.

**Wednesdays:** 9am to 12 noon.

**Fridays:** 9am to 12 noon

**The Millennium House  
coffee shop is also open on  
these mornings.**

.....

**St Ive:** At St Ive Village Hall

**Wednesdays:** 10:30 to 11:30am

**Coincides with the St Ive  
Village Hall Coffee Morning**

## Saint Ive Parish tree-planting survey

Please let us know about any trees that you plant within the Parish. We will include them in our own survey and we will notify the Forest for Cornwall on your behalf, if appropriate.

email [posicrp@gmail.com](mailto:posicrp@gmail.com) or message us on Facebook

[www.facebook.com/posicrp](http://www.facebook.com/posicrp) or phone 01579 364016.

Pictures very welcome.

