

THE PARISH PUMP



January 2023
Edition 494



The Newsletter for the Parish of St Ives



Moorland cattle on Caradon Hill were put on standby after threats of Christmas industrial action by Santa's reindeer.

Disclaimer

The articles appearing in this magazine do not necessarily reflect the views of the Parish Council nor of the Parish Pump Editor.

Parish Councillors Telephone List

Alan Moss (chair)	01579 362064	Marlene Carr (vice-chair)	01579 362919
James Bruce	07411 192645	Martin Corney	01579 382450
Sandra Doe	01579 363096	Rosemary Farley	01579 384810
Nigel Gisby	01579 363096	Tony Hodson	07973 536964
Nigel Libby	07968 891814	Paul Mann	01579 363757
Patricia Steer	01579 363096	Ivor Vaughan	07979 934604
Craig Vaughnley	01579 364083		

Sharon Daw (Cornwall Councillor) 07837 379305 slash.dash.daw@gmail.com

Meetings of St Ive Parish Council

Meetings are now being held on the 2nd Monday of the month except August and December when no meetings are held. Please see the Parish Council website for meeting dates, agendas and minutes.

<http://st-ive-parishcouncil.gov.uk/minutes-agendas/>



Devon & Cornwall Police
Building safer communities together

 **101**

Minicom 18001 101

Police Community Neighbourhood Office

Your Community Support Officer is PCSO Steve Edser 30173.

email: CIOSNBMLLST@devonandcornwall.pnn.police.uk

To report a crime call 101 or go to www.devon-cornwall.police.uk

In an emergency call 999

Contact details for St. Ive Parish Council and for Millennium House

Address for correspondence: Millennium House, Century Square, Pensilva PL14 5NF

General Parish matters should be raised initially with the Parish Clerk, Jenny Hoskin, who will present them to the Parish Council.

Telephone: 01579 363096, email: stiveparish@btconnect.com

For accounts matters for the Parish and for Millennium House contact John Body, Finance Officer: 01579 362102, email: millenniumhouseadmin@btconnect.com

Millennium House enquiries and reservations: 01579 363096

email: millenniumhouse@btconnect.com.

On the web: Millennium House Website: www.cornwallvenue.com

Parish website: st-ive-parishcouncil.gov.uk Facebook: facebook.com/stiveparishcouncil

PARISH PUMP ADVERTISING COSTS

The prices for advertising in the Parish Pump are as follows:

The below prices include VAT at 20%:

Quarter page: £10:00 per month or £100:00 for 12 months.

Half Page: £20:00 per month or £200:00 for 12 months.

Full Page: £33:00 per month or £330:00 for 12 months.

Parish Pump Information and Contact Details

To contact the editor please email: parishpump@btconnect.com
or phone the Parish office: **01579 363096**.

Hardcopy submissions by post or by hand to the Parish office, Millennium House, or Millennium House reception.

Softcopy submissions: By email to the editor in MS Word, MS Publisher, pdf, Tiff or jpeg. Please use A4 pages and minimum 16 point font as the Pump is initially produced in A4 size and reduced to an A5 booklet at the printing stage. If in doubt please contact the editor.

Bargain Corner free ads by email to the editor or drop off at the Parish Office.

Deadline for the Parish Pump is STRICTLY 15th of every month

From the Editor

Hello everyone

I've been sitting here, staring at my screen, for the best part of an hour, trying to collect my thoughts and turn them into something worth saying. In the end the only worthwhile thought that I came up with was that if you can't think of anything worthwhile to say then it's probably best to say nothing. So I'm taking my own advice.

Keep well everybody and have a wonderful, happy, 2023.

Joe

St Ive Village Hall PL14 3LZ

HALL HIRE - £5 an hour

Includes the use of kitchen and electric
(except wall heaters which are on a coin meter).

For bookings ring Amanda or leave a message on 07703 393070

Regular Group and Activity Timetable

Gardening Club	1st Monday monthly 7:30pm	01579 382762
St Ive Snooker Club	Mondays & Thursdays 7:00pm	01579 382315 R Bunkum
Mobile Post Office	Wednesday 10:30 - 11:30 am	
Coffee Morning	Wednesday 10:30 - noon	
Methodist Sunday Service	Check timetable or Parish Pump for service dates & times	Katherine or Keith Mutton 01579 382334

Chairmans Report January 2023

Happy New Year, 2023



Every year starts with fresh hopes all unknown to us. All we can do is to reflect on the year past: who was to know at this time last year that we would have a war in Europe, record temperatures, and a change of prime ministers, twice?

I would like to welcome our newest Parish Councillor, Patricia Steer, who will join us in January. The council still has 13 members and we will continue to serve the parish the best way we can.

The recent cold snap that we had a couple of weeks ago certainly caused us problems locally. The yellow salt bins around the Parish are only filled by Cormac once a year and the salt is primarily to keep the roads and pavements clear, not for private drives and paths. Once the bins are empty, they will not be filled by Cornwall Council until next winter.

If you are interested in Defibrillator training, we will be rescheduling the training early this year, please keep an eye out for the dates.

Date of this month's Council Meeting is 16th January

Stay Safe

Alan Moss

Opening times for the Mel Bar at Millennium House

Tuesdays	7 -11 pm but only when Function Room is in use	
Thursdays	5 -11 pm	
Fridays	5 -11 pm	Last orders always half an hour before closing.
Saturdays	5 -11 pm	
Sundays	12 noon - 5 pm	

Warm Space!

Come and keep warm at Millennium House!

Every Monday to Friday!

9am - 4pm

From Monday 21st November 2022

Games, tea, coffee and company are all here!

Bring a book, knitting or other skill/hobby
to keep you busy while we keep you warm!

Everybody welcome!

Meet friends
& family, or
make new
friends!

Free Wifi



Stay warm
and safe

The more,
the merrier!

*There's tea and coffee and a happy face
To keep you cosy in a nice warm space!*

A message from the Millennium House Manager

Hi Parish Pump readers,

The weather is getting colder, come rain or shine! The bills are increasing and money is tighter!

Please come and join us at Millennium House as we open the centre for our Warm Space initiative. Come in and keep warm!

Millennium House will be open for you Monday to Friday, 9am to 4pm as shown opposite. Come alone, with friends or with family. There's a free library where you can read and borrow books, or sit and do a jigsaw. We have a café and other warm spaces with plenty of card and board games!

There's no charge to come in and keep warm in your community centre!

Don't worry if you don't have transport to get you here, see the notice below about the help we can provide. We will all do our utmost to make this work!

We really look forward to seeing you!

Vanessa, Centre Manager

MH Warm Space - volunteer transport

Is lack of transport preventing you from using the warm space? Let us try to help. We are recruiting volunteers to pick you up from your home and drop you back home when you're done. There will be no charge to you.

To make use of this service, please call Millennium House on 01579 363096, or on 01579 362919 if the centre is closed.

Appeal for volunteer car drivers.

If you have a vehicle and you are going to, or near, Millennium House, can you help by picking someone up on the way? Perhaps you can combine it with the school run, or a trip to the shop, post office or surgery. Or perhaps you just want to help others who are struggling to keep warm this winter, and you don't mind making a special trip. If you might be able to help in some way, please call Millennium House on 01579 363096, or on 01579 363919 if the centre is closed. Thank you!

Pensilva WI December report

For many hundreds of years the Yuletide has been known as a time for feasting, so the ladies of Pensilva WI were keeping up the tradition this month when, not once, but twice, wonderful food was eaten.

The Christmas lunch at Trethorne Leisure Park was first, when most of the members and some of their guests enjoyed a lovely meal, followed by the Christmas party a week or so on. Unfortunately the weather was not with us for this event as the temperature plummeted and the roads became really icy, which did mean that the number attending was down somewhat, but those who did attend were again treated to a visit from Mother Christmas and her elves, who handed out goody bags containing lovely gifts made by the Committee. Of course there was food, and games, and quizzes along with plenty of laughter. A good way to celebrate the season.



The January meeting will be on Wednesday 11th January at 7.15pm in Millennium House, when David Thompson will be speaking to us about first aid. Competitions are Flower of the month and an old-fashioned remedy.

Supporting Guiding & Scouting Activities in Pensilva 200 CLUB Draw Results for November 2022

**1st No. 15
Mrs P Cloake**

**2nd No. 122
Mrs S Prout**

**3rd No. 165
Mrs W Leiper**

Thank you for your support

Pensilva Film Club

Huge thanks to the hardy few that braved the elements to attend our December film – Fisherman's Friends One And All. It was good to see one or two of our previous regulars back for this movie which, of course, was bound to go down well in the home county. For those members who didn't manage to get there, Calstock Arts Centre is showing the film in early Jan (the 5th I think) and I'm sure that Callington (CAVE) will put it on quite soon. C-Fylm members can attend either of these showings on production of their membership card and paying the entrance cost (which I think is £4 for both). Keep an eye on the C-film website for more details or ask me and I'll try to find out for you.



During 2023 we should, for the most part, be back to showing our films on the third Friday of each month, January 20th being our next offering of "Mrs Harris Goes To Paris". This stars Lesley Manville as a London cleaning lady who, in the 1950's, falls in love with a couture Dior dress and decides she must have one at all costs. A light-hearted, feel-good movie that will banish all those winter blues. As usual, doors open at 7pm for a 7.30 start. The bar will be open both before and after the film. Just £3 for members or £6 for those renewing membership or coming along for the first time. Please bring your membership cards to show on the door.

Hope to see you on the night – for more information contact Judy on 01579 208836 or judy.two@outlook.com.

A very happy New Year to you all.

Pensilva Film Club – in association with C-Fylm, part of Creative Kernow.

LINKINHORNE PARISH COUNCIL

Tender Opportunities:

Linkinhorne Parish Council is seeking to engage contractors for the following:

Maintenance of the Public footpaths within Linkinhorne Parish.

Maintenance of play areas: Jubilee Field, Upton Cross and Parsons Meadow, Rilla Mill.

Maintenance of Upton Cross Civic Burial Ground.

Cleaning of Minions Public Conveniences and Upton Cross Public Conveniences.

The contractual period will be for one year (1st April 2023 to 31st March 2024), with an option for a further two years by agreement of the Parish Council.

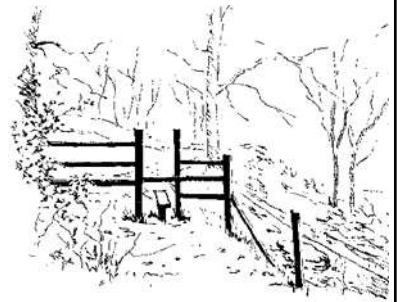
Expressions of interest and requests for full specification details should be submitted to:

Clerk to Linkinhorne Parish Council by email: Clerk@linkinhorneparish.co.uk, or by post:

8 Highbury, Rilla Mill, Callington, Cornwall, PL177PH. or by telephone 07825665838.

Closing date for applications: 5pm on the 1st February 2023.

Linkinhorne Parish Council are not obligated to accept any quotation submitted.



St. Ive Village Hall, The Cross, PL14 3LZ
Monthly Hall Programme January to March 2023

Indoor Table Top / Craft Fair
Saturday January 28th 11am until 1.30pm

Craft stalls, local produce and Tabletop sale

Refreshments available

£5.00 a table

Raffle

Tuck Shop

Skittles and Italian Supper
Saturday 25th February 7pm

Game of skittles

Raffle

Supper: Lasagne/pizza, garlic bread, salad

Refreshments available, or bring your own alcohol

Cost Adults £5.00 Children £2.00

Concessions for large families

Indoor Teddy Bears Picnic
Saturday March 25th 4pm until 6pm

Tea for the children and party games

Raffle

Refreshments available for adults

Cost £5 per child

Concessions for large families

To Book Tickets contact Amanda: 07703393070

TWELVE YEARS OF WILDLIFE WATCHING IN THE PARISH OF ST. IVE

Since moving to the Parish at the end of 2009, I have been photographing and recording the wildlife which I see at my home on the edge of Pensilva on a daily basis. This month I will tell you a bit about one of our local corvids (members of the crow family)...



...THE JACKDAW

The Jackdaw is the smallest of our corvids, distinguished by its black cap on a grey hood and a piercing white eye. Because of its appearance, people sometimes mistakenly think this is a hooded crow. A hooded crow has a different pattern of brown not black markings and is common in Scotland, but would be a very rare visitor here.

The jackdaw can be seen in a wide range of habitats, including alongside human habitation where it is notorious for building nests in chimneys.

Although their breeding season is given as April to July, in this part of the country they have been known to

start nest building as early as January. If you have an unprotected chimney, you may want to get a protective cowl on it sooner rather than later! If you do get a jackdaw nest in your chimney, under the 'Wildlife and Countryside Act 1981', you are not permitted to remove it until after the breeding season has finished.

Jackdaws will nest in holes in trees and cliffs as well as buildings. Nests are typically made of a bed of twigs topped with wool or hair. They mate for life and have been found to stick with the same mate even when they have been unsuccessful in raising young. Couples can be seen side by side preening. They pair up in their first year, but do not breed until the following year, when the female will gradually lay about 6 eggs, which she will incubate for up to 17 days. The eggs hatch one at a time giving the earliest the greatest chance of success. In a bad year when food is scarce, the youngest chick may be abandoned to give the others a better chance of survival. The young will fledge after about 4 weeks. Their parents rarely return to the same nest site the following year.

Jackdaws eat invertebrates, fruit, seeds and carrion. They will sometimes take the eggs or nestlings of smaller birds, but not to the extent where this endangers other species, they will however demolish



species. They will, however, demolish fat balls in no time at all!

Although they only live for about 5 years, jackdaws quite often grow grey in old age. Unlike humans where this is due to lack of pigment, their feather structure changes, so changing the way in which light is reflected, which is more subtle and so not that easy to spot.

Jackdaws are highly sociable birds. As well as breeding in colonies, they also roost and feed together. If one bird finds a good source of food, they will often come back to the roost and encourage the others to follow it to its find. They can be seen and heard in flocks performing acrobatics as they call to each other. I have seen their call described as a 'kya', but I associate it with a raucous chattering which is less harsh than the calls of most other corvids.

As with most corvids, jackdaws are highly intelligent birds capable of learning new tricks in the wild as well as in captivity. A tame jackdaw was once trained by thieves to steal money from cash machines! Jackdaws also seem to be able to identify individual humans, though it is not known how they do it. Only a few members of the animal kingdom (including some other corvids) can do this.

British jackdaws do not usually migrate. They are fairly sedentary birds staying close to their breeding grounds, travelling only a few kilometres to find food. However, they are frequently joined by European Jackdaws from places such as Scandinavia through the winter months.

Over the centuries, jackdaws have become creatures of legends. Perhaps unsurprisingly (given their dark colour and piercing eye) in this country they have been associated with witches and seen as evil indicators of impending doom. A jackdaw on a cathedral is said to predict rain. However, in some other cultures they are regarded more positively and said to predict a new arrival.

The name 'jackdaw' probably comes from 'Jack', meaning rogue (referring to its reputation as a thief) and 'daw' which is another interpretation of its call.

This clever bird is one of the few which is aware of my presence inside the house and will fly away when I think it has taken enough of my bird food and wave at it from my lounge!



HAPPY WILDLIFE WATCHING! Hilary

St Ive & District Gardening Club Report - December 2022.

Before I begin the December report, here are the answers from last month's quiz:

1. Which King created the Hanging Gardens of Babylon? **Nebuchadnezzar II**
2. Who designed the Blue Peter Garden in 1974? **Percy Thrower**
3. Which flower's name comes from the Ancient Greek word for star? **Aster**
4. Which flowers were once known as gillyflowers? **Carnations**
5. What is the national fruit of India, Pakistan, and the Philippines? **Mango**
6. Who is the patron saint of gardeners, horticulture, florists, brides and brewers? **Saint Dorothy**
7. What were brought to Britain from Germany by Sir Charles Isham in 1847 & are banned at the Chelsea Flower Show? **Garden Gnomes**
8. Vanilla flavouring is derived from which flower? **Orchid**
9. Which fruit was cultivated from crossing a blackberry and a raspberry? **Loganberry**
10. What colour is a Welsh poppy? **Yellow**
11. Which charity was founded in Devon in 1972 by farmer Kenneth Watkins? **The Woodland Trust**
12. Which flower is often called the 'winter rose' or 'Christmas rose'? **Hellebore**
13. Which flower inspired the William Wordsworth poem 'I Wandered Lonely as a Cloud'? **Daffodil**
14. Which flower is sometimes called the sword lily? **Gladiolus**
15. Most species of eucalyptus are native to which country? **Australia**

On Monday 5th December our speaker was Sarah Anthony from Newquay Orchard.

Sarah began by telling us how she came to be working at Newquay Orchard. Starting at a bank, she realised desk work was not what she enjoyed so she left & found work at a local nursery, where she discovered her love for horticulture, nature, and the outdoors. Keen to learn the theory as well as the practice, she took various courses over the years to provide her with the knowledge she now has. She eventually ended up at Newquay Orchard as Education Manager. The Orchard started life in 2015 as a non-profit making organisation, weaving nature into everything it does with the goal of being built by the community, for the community. A 7-acre green space, on land leased from the Duchy of Cornwall, in urban surroundings & a 15-minute walk from the town centre; I think most of us expected to learn about a field, some fruit trees & some benches for the community – we were very wrong.

Sarah explained the Orchard is an encompassing place where everyone, no matter their background, situation, experiences, age or ability, can bring something to the Orchard & the Orchard will give them something positive to take away.

The 7 acres boasts an array of facilities, linked together to create a world of learning, sharing & growing (literally & figuratively). As expected there is a garden area with allotment-style kitchen gardens & plants/flowers/bushes & of course an orchard. Community volunteers look after a no-dig garden area; caring for the soil so the soil will, in turn, care for the items which grow from it. Volunteers who know about growing, support those who are less knowledgeable, but it can work both ways: those who know less about growing can impart some knowledge on topics they know about, maybe cooking or building relationships with others, or other life skills.

Continued on next page...

Gardening club report. Continued from previous page.

The food produced in the allotments is used in a variety of ways. An onsite kitchen & café is given some of the produce to come up with the most delightful meals for the staff, volunteers & the public. Sarah commented she never knew how many delicious meals kale could make until she worked at the Orchard! The kitchen equally provides a space for learning how to cook, how to turn food from the garden into nutritious meals, & why it is important. Can the link between looking after the soil, to growing the produce, be extended to looking after the person?

There is a space where students & volunteers can learn or develop woodwork skills. Again there is a link, this time to the wider community, producing the most wonderful wood-based spaces like the newly-fitted shop at The Lost Gardens of Heligan. The team consists of students, volunteers & experts, working together to take the learning from the woodwork space into the world beyond, showing the learners how their skills can be used.

The Orchard runs many programmes to support people with a range of needs. The first programme Sarah told us about was the link with the NHS. The Orchard works with the NHS to provide a safe, kind, accepting place to fulfil social prescriptions; i.e. non-clinical, no medication treatment that addresses a person's needs. For example: a person might be lonely & struggle to socialise, so the NHS can refer this person to Newquay Orchard where they can be supported to meet others & build relationships in one or all of the environments the Orchard has to offer.

The second programme is about education outside of the traditional space. This is for people, young people & adults, who need something different than sitting in a room being spoken to. They are able to express themselves, learn & put the learning into practice as they go. The non-judgemental environment of the Orchard provides a place of calm, a place of ownership for the learners to be proud of, which gives them the confidence they may have lost, so they can grow in the world beyond.

The third programme is an area for local small businesses to use as they require, when they need it & for the time they need it. It is a building with work space for small businesses who share the vision & ethos of The Orchard. In turn, if they can, these businesses offer a workshop or an opportunity for the volunteers & students to work for them – again all linking & giving something back to The Orchard.

As you can see there is a lot to this space, which is nestled in an urban environment. It makes use of the space to give back, share with others, to give assistance and also to accept it.

To learn more go to: www.newquayorchard.co.uk, or pop in to witness the brilliant work they do.

No meeting in January (it's our annual Christmas lunch) so the next one is Monday 6th February, 7:30pm, at St Ive Village Hall – PL14 3LZ. Speaker: Phillip Rodda talking about Rodda's Dairy.

Refreshments (tea/coffee & biscuits): £1. We are a friendly bunch who'd love to have new members. Feel free to come along to the meeting with no obligation to join – we'd be pleased to welcome you.



NEW YOUTH GROUP FOR 11-19 YEAR OLDS

UP TO 25 YEAR OLD WITH SEND

EVERY FRIDAY 5.00-7.00PM

FREE OF CHARGE & OPEN TO ALL.

VENUE: MILLENNIUM HOUSE, PRINCESS RD, PENSILVA,
LISKEARD PL14 5NF

ACTIVITIES, DRINKS/SNACKS & A CHANCE TO HELP BUILD A
YOUTH LEAD GROUP IN YOUR AREA.

FIND OUT ABOUT US @:

WWW.SERVICES.ACTIONFORCHILDREN.ORG.UK/KERNOW-CONNECT

Millennium House Community Transport

Do you need transport to and from the doctor or hospital?

Millennium House Community Transport's aim is to connect local communities and reduce social isolation.



If you need transport to Hospital, doctors or vaccination and have mobility issues, or are unable to drive to your appointment, please call Millennium House on:

01579 362919 or 01579 363096

and we will try to help.

To volunteer as a driver please call Millennium House on

01579 363096.

AFTERNOON TEA

Penharget Cottage
Pensilva PL14 5RJ

Friday 6th January
3.00 pm



Bring & Buy Stall
Donations in aid of
St John's Church

We can grieve for many reasons:
the death of a friend or relative;
the diagnosis of a friend or relative
with dementia or a terminal illness;
the loss or illness of a pet;
the loss of a job;
homelessness;
loss of mobility or driving licence;
closure of your Church or Chapel;
loss of freedom;
the closing of a support group;
the loss of stability in society.
Any of these can cause us to
grieve, so the Good Grief Cafe is
for anyone who is grieving in any
of these ways and no doubt
there are others too.
So please feel free to come along
and eat our cake, drink our tea
and just chat if you want to,
or just listen if you don't.
All are welcome.
Please use this as an opportunity
to invite someone to
come with you.

Good Grief Cafe



St John's Church

Wednesday 18th January 3.00 to 5.00 pm

Contact Geoff on 01579 362698

Teatime Church



For children and their families

Sunday 15th January

3.45pm

St John's Church
Pensilva

Sharing a Bible Story

Playing Games

Singing and Praying Together

Eating Tea



For more information contact: Rev Becca Bell
Rev Li Selman

revbeccabell@gmail.com
revliselman@icloud.com



FOOD for THOUGHT



SUNDAY

22nd

January

5.00 PM

St John's Church
Pensilva

A time of fellowship
and informal worship
with a shared afternoon tea



For further information
& to arrange transport:
Geoff 01579 362698

Pensilva



MemoryCafé

Thursday 26th January

2.00 to 4.00 pm

If you have
memory problems
or
you are a carer
for somebody
who does
and
would like to
meet others
who understand
your situation
then join us at
St John's Church

Contact Geoff 01579 362698

St. Ive Village Hall PL14 3LZ

INDOOR TABLE TOP AND CRAFT FAIR



Sat. 28th January 2023
11am until 1pm

BOOK YOUR TABLES
£5 EACH

Contact Amanda: 07703393070
Refreshments available

A photograph showing several hands engaged in knitting and crocheting. The hands are wearing colorful wristbands. There are various colored yarns (green, yellow, blue, pink, orange) and finished knitted items (a blue and orange sock, a blue and white striped sock) scattered around. The background is white.

knit and natter

Do you enjoy stitching, knitting, crocheting?

Join our friendly knit and natter group. Come and meet new friends and swap tips and ideas – all ages and abilities welcome!

Drop-in!

There is no charge for this activity but there is a Donation Box if you would like to make a cash contribution

Tuesday
31st
January

St John's
Church
Pensilva
on the
last Tuesday
of the month

2.00
to
4.00 pm

Contact Kathleen
01579 363686

St. Ive Village Hall PL14 3LZ
SKITTLES AND ITALIAN SUPPER
Saturday 25th February at 7pm



£5 Adult
Child £2

For Booking contact Amanda: 07703393070

St. Ive Village Hall PL14 3LZ
Children's Indoor Teddy Bear's Picnic
With music and games



Saturday 25th March
4pm until 6pm

Bring your teddy along for tea
and a cushion to sit on.

Bookings please contact
Amanda: 07703393070

ST JOHN'S CHURCH, PENSILVA

A united congregation of the Church of England & the Methodist Church

Services for January 2023

Sunday 1st 10.30 am United Anglican Cluster Service
 Sunday 8th 11.00 am Café Church
 Sunday 15th 11.00 am Anglican Holy Communion
 Sunday 22nd 11.00 am Patrick Clark *Methodist Local Preacher*
 5.00 pm Food for Thought
 Sunday 29th No service at St John's
 10.30 am United Cluster Service at Menheniot Parish Church
Thursdays 10.00 am Morning Prayer Fellowship

JANUARY EVENTS *Please see posters for full details*

Friday 6th 3.00 pm Afternoon Tea at Penharget Cottage, PL14 5RJ
 Sunday 15th 10.00 am Circuit Covenant Service at Liskeard Methodist Church
 Sunday 15th 3.45 - 5.00 pm Tea Time Church for children & their families
 Wednesday 18th 3.00 - 5.00 pm Good Grief Café
 Thursday 26th 2.00 - 4.00 pm Memory Café
 Tuesday 31st 2.00 - 4.00 pm Knit & Natter

For further details or if you know of any illness or need in the village, please call Geoff, 362698 or Frances, 363718

Unity Methodist Church St Ive with Bealbury and Blunts

Meetings at St Ive Village Hall unless stated otherwise

Services for January 2023

Sun 1st Jan.	10.30 am	United Service at St. John's
Sun 8th Jan.	10.30am	Mrs Barbara Snowling
Sun 15th Jan.	11.15am 6pm	United Service at St Ive Parish Church. United Green Shoots at Blunts
Sun 22nd Jan.	10.30am	Judith Allen
Sun 29th Jan.	11.00 am	United Service at Blunts

PENSILVA VILLAGE HALL

We are now open and back in business!

Anyone wishing to book the hall for meetings, birthday parties or fundraisers, please contact Peter or Jackie Browning on **01579 363212** or email **peterpensilva@gmail.com**

Please note that as well as hall rent there is a coin meter for



MOBILE LIBRARY



The County Mobile Library visits our area every four weeks, always on a Friday. You can now browse the shelves again, but you can still pre-order books if you prefer.

Next visits: **Jan 13, Feb 10, & Mar 10 2023.**

Stops at The Victoria Inn, Pensilva from 10.25 to 10.45am; and Quethiock bus stop from 11.00 to 11.20am.



Struggling with Sight Loss?

iSight Cornwall offers practical help to people living with sight loss in Cornwall including:

Low Vision: Advice for low vision aids

Assistive Technology: Advice on products

Benefits Advice: Assistance to claim entitlements

Equipment Demonstration: Advice on gadgets

Social Clubs & Activities: Links to clubs & activities in the county

For more details Telephone 01872 261110 or visit

www.isightcornwall.org.uk



Tamar Area Prostate Support (TAPS)



DON'T IGNORE THE SIGNS

- A need to urinate frequently especially at night
- Difficulty in starting to pee
- Weak flow
- Feeling that your bladder has not emptied fully

If you would like to know more about us please contact one of the steering group listed below or email tapsinfo555@gmail.com

**Come and join us on the first Tuesday of the Month
10.00 at the Compton Park Engine House Callington
for a friendly chat and a coffee.**



Paul Mansell 01822 832179 - Harry Lawson 01579 383258

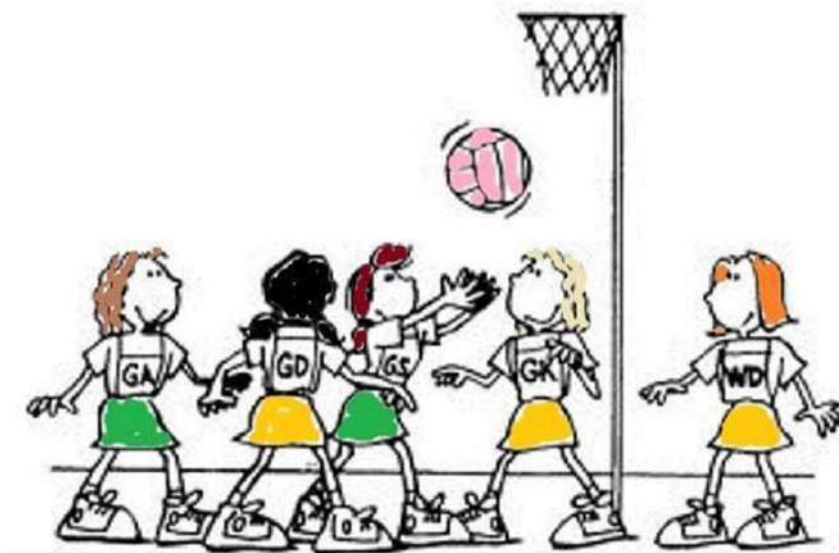
John Stewart 01822 833343 - Stephen Williams 07735 389883

Albert Doidge - 01822 832471

**Prostate Cancer UK is a registered charity in England and Wales (1005541)
and in Scotland (SC039332). Registered company 02653887.**

Ever tried... **Ladies Walking Netball?**

Come along to Millennium House, Pensilva



**Thursdays
4.00pm - 5.00pm**

£2 per session

**For further info contact rosemaryfarley@gmail.com
or Tel. No. 01579 384810**

**Interested in
joining a group of
birdwatchers?**



**Join the
EAST CORNWALL
BIRDERS**

All levels of experience welcome, beginners to experts. We learn from each other. Bird Outings on the first Thursday of each month, to coast, estuary or moor etc. We focus on east Cornwall and west Devon, with occasional trips further afield.

Interested? Want more information? Contact: Angus Parker
E-mail: angusmmparker@gmail.com Mobile: 07860 109586

CALLING ALL COUNTRY DANCERS AND CALLERS

Pensilva Country Dancing Club has now started up again and would welcome new members. We would also welcome anyone who would be willing to take a turn at calling for the dances - help can be given for the learning process!

We meet fortnightly in the Art Room at Millennium House, Pensilva for a couple of hours on a Thursday evening from 7pm to 9 pm. If you are interested in joining or calling, please ring Frances on 01579 363718.

Millennium House Coffee Shop Opening Hours

We are open Tuesdays, Wednesdays and Fridays, 9am to 1pm
(to coincide with Post Office days).

Our intention is to open more days and for more hours as soon as Covid regulations allow.

Covid precautions are in place at all times, providing a safe environment for our customers.

All Being Well

We are still open for three mornings a week. A maximum of six members can now attend at one time.

Opening hours:

Monday, Wednesday and Saturday, 9am to 1pm.

Maximum six members at a time for each of three slots within each session: 9:00 to 10:20, 10:20 to 11:40 and 11:40 to 13:00

Prior booking is essential

To book yourself in or for any enquiries, call in at the gym or telephone on **01579 363890**, during the opening hours listed above.

22 years working in our local community to improve health, fitness and well being.

Badminton at Millennium House

Come and join our relaxed and friendly group.

Mon & Tue 7:30 - 9:30pm

For further info phone Nigel or Carol on 01579 363594 or 07885 798370

MILLENNIUM HOUSE

COMMUNITY CENTRE, AND DYNAMIC EVENT
VENUE IN THE HEART OF EAST CORNWALL



Conferencing

We have four meeting rooms for all your corporate needs.



Function Room

For parties, discos, or just larger events; with adjoining kitchen and bar.

Our Facilities

Sports Hall

For sports or larger events requiring a stage, the sports hall is our biggest venue.



Coffee Shop

Providing tea, coffee and cake. And for something stronger, there's the Mel, a licensed bar.



Enquire today:
01579 363096

www.millenniumhouse.org.uk
PRINCESS ROAD, PENSILVA, PL14 5NF

What Do We Do?

From wedding to wakes, kids or adults, corporate or community, we can host and cater your event. If you have an idea that's not covered here, get in touch and see if we're the right venue for you.

We're also home to:

- ✓ The Mel bar
- ✓ All Being Well Fitness Centre
- ✓ Post Office
- ✓ Sunflower Park kids playground
- ✓ Extensive playing fields
- ✓ Community Library

Bargain Corner Free Ads up to £50

Ads are free for items up to £50. £5 charge for items over £50. Please leave a note at Millennium House reception, ring the Parish Office on **01579 363096**, or email **parishpump@btconnect.com**.

***** Please let us know when your item has sold *****

Two-seater sofa, Only 6 months old. Greyish in colour. **£150**.
01579 347403 or 07890 365598

Massage Couch £40. Lots of **Maths and English fun worksheets** for 6-7 year old child. Good for home-schooling. **FREE**.
07933 960113

Morphy Richards multi-floor **Steam Cleaner**, with instructions. Used twice. **£15 ono. 01579 362788**

Glass top, beech effect **TV & Video table** with drawer. VGC. **£10. 01579 363281**

Four motor biker jackets at £10 each
1. Red/Black, Frank Thomas, Size 44.
2. Black leather, ladies, Size 12-14.
3. Black leather, Size medium.
4. Black/Red, Size XL.
All in good condition
01579 346986.

Prestige 5 ltr high dome **pressure cooker**. As new. **£25**.
Delux Gourmet **stove top grill**. **£10**. As new. **01579 363281**.

Car roof box. Opens both sides. Only used once. Full instr's. L 2300mm W 820mm H 360mm. **£50. 01579 362217**.

Axminster 2 speed forward and reverse **drill**, in GWO **£10** and a **Power Planer PPL800 - 800W** in GWO requires a new blade **£10** or **£15** for the two items.

2 Empty Dewalt Tool Cases, 1 general tool box with free Dewalt cordless drill no battery. **£30**.

10 wooden **moulding planes** Usable cond. 1 wooden spirit level & scribe. **£50**.

Six coils of **industrial steel cable** now surplus to requirements **£35** the lot.

New 12'x3'1" good quality hard **vinyl flooring**, light/med brown wood effect **£15**.
01579 384658 (Safe Distancing if reqd.)

Single bed & headboard. Never used. St. Ive area. **£15 ono. 07522 484979**.

Ladies Rocketdog wedge **flipflops** black with red and mixed colour beads on material, size 5. still in box as new paid **£10**.

Upton Cross/Minions area
07368 528398.

Please let us know when your items have sold.

ADVERTISE HERE!

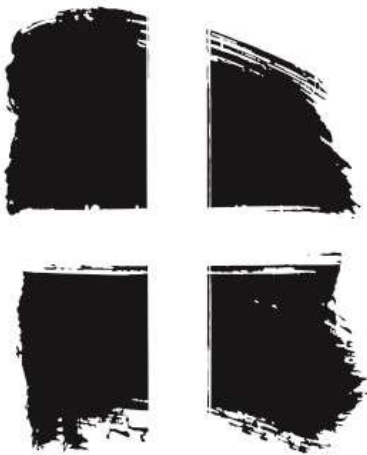
This box for just **£20 per month** incl. VAT (£16.67 Net)

2 MONTHS FREE for a 12 month order.

i.e. **£16.67 per month** incl VAT for 12 months (£13.89 net)

See the full tariff on page 3

One thousand copies per month distributed free of charge to households in the Parish of St Ive.



Right-on 
Plumbing &
Maintenance

Gareth Haines

Tel: 07947353682

Colin Swinburne Electrical Services



All aspects of domestic and commercial electrical work.

Inspection and testing (EICRs), fault finding, new installations, rewires, consumer unit replacement, additional sockets, lighting upgrades, garden power and lighting, extractor fans and more.

Electrician in Pensilva. Free advice and quotes.



CSES@btinternet.com 07974499138



Group Travel

Day Trips & Coach Holidays

Enterprise Park, Midway Road, Bodmin, Cornwall PL31 2FQ Tel: 01208 77989

Coach Excursions & Tours 2023

24th -29th April	The Lake District, Trains, Cruise & Beatrix Potter
Sun 7th May	Badminton Horse Trials
Tue 16th May	Steam Train to Minehead and Lynton & Lynmouth Cliff Railway
Tue 13th June	Hestercombe House & Gardens
Tue 27th June	Train from Paignton to Kingswear & Cruise Dartmouth to Totnes
Tue 11th July	Exmouth & River Cruise to Exeter
17th – 21st July	Visit Bournemouth
18th August	RHS Rosemoor Gardens
1st – 3rd Sept	Burghley Horse Trials
September	Edinburgh, Scotland

Visit our website for all our excursions & tours and download a PDF version of our 2023 brochure.

Call: Dawn or Robin on 01208 77989 for bookings and brochure
website: www.grouptravelcoachhire.co.uk
email: grouptravelcornwall@btconnect.com

Bodmin MOT Centre

01208 77989

Garage Services
MOT Testing Station
Classes 4, 5 & 7
Servicing & Repairs
High Vehicles & Motorhomes
Brake Test & Headlight Alignment
Pre MOT Inspections
Annual & Interim Vehicle Servicing
~
Commercial interim inspections available
including brakes and lights
~
Helping you stay compliant

Bodmin MOT Centre
at Group Travel
Enterprise Park, Midway Road,
Bodmin, Cornwall PL31 2FQ

Trystan Phillips



Carpentry/Joinery & Property Maintenance



35 Years' Experience

Fully Insured Including Public and Product Liability

All aspects of Carpentry undertaken including:

Bespoke Carpentry & Joinery , Kitchen Installations, Doors, Partitions, Skirtings, Architraves, Shelving, Timber Floors renewed & repaired, Laminate Floors fitted, Timber Windows repaired including 'Sliding Sash'. Plus General Property Maintenance, including Painting/Tiling & much more!

07397 153792 trystanphillips carpentry@gmail.com 01579 363150

Debbie's Care Services

Tel. 0777 948 3230

Hello, my name is Debbie. I am a local lady who has been working in the community for over 30 years.

I provide the following services and more!

- Assisting bathing / showering
- Preparation of meals
- Cleaning / Shopping / Ironing
- Companionship / Friendship and emotional support
- Assisting with mobility
- Day, Evening and Night Care

New, High-Quality, Local
Decorating Service

EDEN SERVICES



Interior / exterior decorating, including spraying

All work fully insured and guaranteed

References available

High quality work at sensible prices

Over 25 years experience

Call Julian for a free, no obligation quote

Mobile 07775 515036 Office 01579 641129

Find us online:
fresh_prop.co.uk



Top quality carpet, upholstery & hard floor
cleaning services based in Callington

Long-established cleaning professional

Domestic & commercial

NCCA qualified & member

Steam cleaning & dry carpet cleaning

Tile & grout + natural stone clean & seal

Vinyl & LVT including Amtico & Karndean

Call 0800 3893393 or 07905 188459

Or email nevil_fresh@msn.com

TRADITIONAL STONE SERVICES

CLASSIC & TIMELESS
STONE MASONRY
AND LETTERING

MEMORIAL CLEANING

COMMISSIONS TAKEN

01579 363693

OR

07507 782282



Domestic Electrical
Property Maintenance
Interior & Exterior Work
Carpentry :: Decking
Kitchens :: Bathrooms
Wall & Floor Tiling
General Plumbing

MCCARTHY PROPERTY MAINTENANCE

**Electrical Safety
Register**

incorporating
ELECTSA + ECA
Certification Ltd

HIGHLY REGARDED LOCAL BUILDER
COMPETITIVELY PRICED
COVERING THE SOUTH WEST

Contact Dominic

07968 599 675

01579 362 945

info@mccarthypropertymaintenance.co.uk

www.mccarthypropertymaintenance.co.uk



Maintaining and preserving our
countryside for the benefit of all

Dry Stone Walls

Cobblestoning

Stone faced walls

Hedgelaying/steeping

Land management

All aspects of Landscaping

Mobile: 07539 296799 or

Email: info@just-in-stone.co.uk

Westwood Garden Maintenance



Antony Watts

Grass Cutting, Clearance

Weeding, Turfing

Hedge Cutting

Patio Cleaning, Planting

Regular Visits / One-off Contracts

Residential & Commercial

FREE ESTIMATES

01579 362019 www.westwoodgm.co.uk 07952 094472

JPH Plastering and Rendering

Internal plastering

Internal and external rendering

Internal/external painting & decorating

Property maintenance

Landscaping and land management

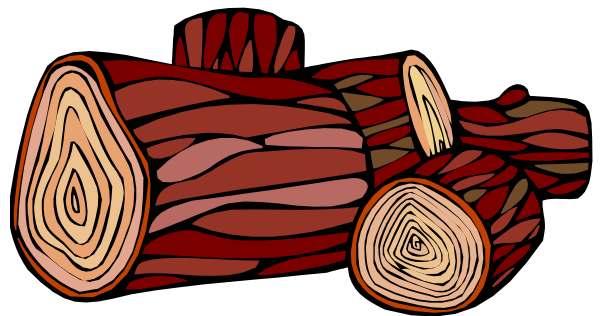
For estimates and no obligation quotes

contact Justin on:

07539 296799 or

info@just-in-stone.co.uk

SEASONED LOGS



MIXED LOAD

or

HARDWOOD

Tel. Jonathan

Mobile 07966 070725

or

01579 363157

PENROSS

Rosecraddock Lodge Holiday Bungalows
(Between Pensilva & Liskeard)
Perfect for family & friends coming to visit!



Sleeps 4

Sorry no pets or smoking

Tel: Julie 01579 362221

Email: penhargetfarm@gmail.com

NICOLA GREENE

BSc (hons) Podiatry MChs

HPC Registered Chiropodist/Podiatrist

**Home Visit Practice treating all
your foot care needs:**

- Nail Cutting
- Corns and Calluses
- Thickened Nails
- Dry Cracked Skin
- Verrucae
- Foot Pain
- Diabetic Foot Assessments
- Wound Care

T: 01579 590027

M: 07786164205

E: nicki_greene@yahoo.com

Matt's Windows

Repair of Windows, Doors & Glass Unit Replacement

Making draughty windows great again!

T: 01579 641228

M: 07533 387368



KV Accounting Solutions

ACCA

Local Accountant offering fixed fee accounting services

With over 20 years experience, I am a fully qualified, friendly, local accountant

- | | |
|---|--|
| ✓ Annual Accounts for Sole Traders and Partnerships | ✓ Self Assessment tax returns |
| ✓ Book Keeping & Payroll | ✓ iXBRL tax filing |
| ✓ Personal Tax Planning | ✓ Tax investigation Fees Insurance |
| ✓ Company Accounts | ✓ Company Secretarial work |
| ✓ Business Support & Advice | ✓ Tax calculations for Sole Traders and Partnerships |

Kate Vaughnley FCCA - Chartered Certified Accountant

Website : www.kvaccountingsolutions.co.uk or Email : katevaughnley@gmail.com
Telephone : 01579 364083



**NATURAL GAS - LPG - OIL
BOILER INSTALLATION**

BOILER SERVICE & REPAIR

LONG WARRANTY FREE QUOTES

07859848288

bagasservices@outlook.com

533335

**GAS
safe
REGISTER**



Kiln Dried Firewood
Kindling & Firelighters
Eco Heatlogs
LPG Bottled Gas
Patio, BBQ & Camping Gas
Coal & Smokeless Fuel



0800 8021 223
sales@loganslogs.co.uk
www.loganslogs.co.uk

Heel 2 Toe Footcare

Tired Aching feet.

Corns, Hard skin, Verruca.

Fungal infected toe nails, or
toe nails require cutting.

Diabetic feet also treated and
regularly checked.

I can help to keep your feet
looking and feeling good.

I am a trained Foot Health
Practitioner to Diploma Level, fully
insured & DBS checked.

I can do home visits via an
appointment.

Call Penny: **07746 926146** for
further information. **Please note
new number May 2021.**

J. J. Child

Plumbing and heating engineer.

Oil appliance service, repair and breakdowns.

Over 30 years experience

Call John: 01579 362336 or 07837 921086



PMB Book Keeping

Friendly Book Keeping Services:

Purchase and Sales Ledger
Bank Reconciliations
VAT returns - Making Tax Digital
Self Assessment Tax Returns
And More

Fully Qualified, Insured and
Licenced

T: 01579 683624

E: pmboutsourcing@outlook.com



Fencing
Paths & Steps
Turf & Astro turf
Driveways
Retaining walls
Digger work
Footings & foundations

Patios
Rendering
Decking

And more

Free no obligation quotes

Call Rob on:

**07518246666 or
01579 641802**

Debbie Hicks - Counselling and Psychotherapy

Caring, confidential counselling for all.

*I work in a therapeutic relationship to
help you understand yourself better.*

*I offer a warm, approachable, relaxed
environment for you to untangle your
thoughts and emotions.*

www.debbiehickscounselling.co.uk

Email: debbiehicks10@gmail.com

07851 133782

*More info on my
website or by
contacting me.*



Window Cleaner

Window Cleaner

Also any upvc cleaned

i.e. fascias, gutters, etc.

gutters cleared & unblocked

Please phone Rob

07709 053464

Window Cleaner

Window Cleaner

INDEPENDENT FAMILY FUNERAL DIRECTORS

Supporting families to arrange funerals with sensitivity, dignity and care.

- Flexible, caring approach, tailor-making funerals to suit your needs and budget.
- Open and transparent, affordable pricing.
- Free bereavement support sessions, open to all in our community, first Wednesday of the month, 10am - 12pm.
- Prepayment Funeral Plans available

For details of our services and prices, visit our website.



01579 362358 | www.fdhallfunerals.co.uk



Avalennek, Caradon Town,
Upton Cross, Liskeard
Cornwall PL14 5AR
Telephone 01579 363598
Mobile 07901 538132
chrisrounsevell@tiscali.co.uk

HOG ROAST EQUIPMENT HIRE AND MEAT SUPPLY

Hog Roasts For Those Special Occasions
Self Catering or Hassle Free Service
Everything done to your special requirements

CHRIS ROUNSEVELL
TRADITIONAL BUTCHER

Come and visit our recently updated
Tile & Bathroom showroom in PENSILVA

We offer a generous discount to all Pump Readers

Unit 24 Pensilva Ind Est, St Ive Road, Cornwall PL14 5RE 01579 362264



CORNWALL TILE
CENTRE

Pensilva Showroom

Open Mon - Fri 8.30am - 5pm
Saturday 9.00am - 1pm

Tiles & Mosaics for:

Bathrooms & Kitchens Living Areas Conservatories
Patios & External Areas Wet Rooms & Spas Swimming Pools
& All Commercial Applications

 atlas concorde

www.cornwalltile.com

OPEN FOR RETAIL, TRADE & COMMERCIAL ENQUIRIES



THE HOME OF WOOD

BULK DISCOUNTS AVAILABLE ON OUR 30 YEAR SERVICE LIFE POSTS



OUR GOLD TREATED STAKES AND POSTS ARE THE ONLY ONES AVAILABLE IN THE UK THAT ARE APPROVED BY THE WPA BENCHMARK FOR 30 YEAR SERVICE LIFE

For more information please contact one of our team



Bond Timber, Bake Sawmill, Trerulefoot, Saltash, Cornwall,

PL12 5BW

01503 240 308 stacy@whbond.co.uk

Pensilva Stores

Amazing Value

Premier
a great deal more from your local store
Mon-Sat. 7:00 AM. - 9:30 PM.
Sunday 8.00 AM. - 9:30 PM.

- ✓ Fantastic Special Offers every month!!! (See store leaflets)
- ✓ Come and Check out our great deals on Wine, Beer and Spirits
- ✓ Local Produce: Homemade Butter and Clotted Cream, Meat from our local butcher
- ✓ Cornish Fresh Fruit and Vegetables
- ✓ Fresh Bread, Pasties and Cakes
- ✓ Take Away Coffee, tea and hot chocolate
- ✓ Newspapers and Magazines, Greeting Cards
- ✓ Paypoint, Lottery

* **Free to use ATM** *
* **Card Payment** *

Friendly Staff + Service with a Smile !!!

Pensilva Stores is a family run business who have been serving local people and visitors for more than 21 years.

Higher Road, Pensilva, Liskeard, Cornwall PL14 5NQ

Tel: 01579 362547

MENDOLOGY

Garage Door Specialist

- Repairs
- Servicing
- Installations


Out of hours service
call Dave anytime 07974 442645

MENDOLOGY COMMERCIAL DOORS LTD
www.mendologydoors.co.uk

01579 363760

PensilvaCars

01579 363516

- ✓ MOTs Class 4
- ✓ Service
- ✓ Repair
- ✓ Tyres
- ✓ FREE Courtesy Car
- ✓ Car & Van Sales
- ✓ Diagnostics
- ✓ Air Conditioning
- ✓ 

We have offered a supply, fit & balance of tyre service for 10 years at competitive prices.

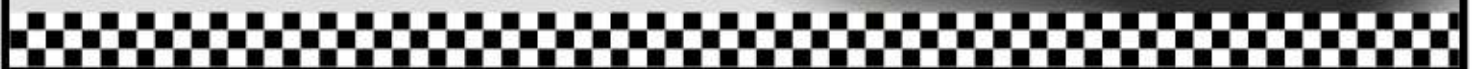
Most of our tyres can be supplied the same day.

LOCAL RECOVERY £45.00

www.pensilvacars.co.uk

pensilvacars@hotmail.co.uk

We can service and repair your car to manufacturer specification, keeping your dealer warranty without main dealer expense.





Pensilva & St Ive Post Office Service

Pensilva: Through the coffee shop on the 1st floor of Millennium House

Tuesdays: 9am to 1pm.

Wednesdays: 9am to 12 noon.

Fridays: 9am to 12 noon

**The Millennium House
coffee shop is also open on
these mornings.**

.....

St Ive: At St Ive Village Hall

Wednesdays: 10:30 to 11:30am

**Coincides with the St Ive
Village Hall Coffee Morning**

Saint Ive Parish tree-planting survey

Please let us know about any trees that you plant within the Parish. We will include them in our own survey and we will notify the Forest for Cornwall on your behalf, if appropriate.

email posicrp@gmail.com or message us on Facebook

www.facebook.com/posicrp or phone 01579 364016.

Pictures very welcome.

