

THE PARISH PUMP



November 2022
Edition 492



The Newsletter for the Parish of St Ives



Many thanks to Ray Roberts who sent in this beautiful picture of a sunrise on Caradon Hill. We offer it as a little something to lift the spirits as we head into the winter months.

Disclaimer

The articles appearing in this magazine do not necessarily reflect the views of the Parish Council nor of the Parish Pump Editor.

Parish Councillors Telephone List

| | | | |
|--|--------------|---------------------------|--------------|
| Alan Moss (chair) | 01579 362064 | Marlene Carr (vice-chair) | 01579 362919 |
| James Bruce | 07411 192645 | Martin Corney | 01579 382450 |
| Sandra Doe | 01579 363096 | Rosemary Farley | 01579 384810 |
| Nigel Gisby | 01579 363096 | Tony Hodson | 07973 536964 |
| Nigel Libby | 07968 891814 | Paul Mann | 01579 363757 |
| Ivor Vaughan | 07979 934604 | Craig Vaughnley | 01579 364083 |
| Sharon Daw (Cornwall Councillor) 07837 379305 slash.dash.daw@gmail.com | | | |

Meetings of St Ive Parish Council

Meetings are now being held on the 2nd Monday of the month except August and December when no meetings are held. Please see the Parish Council website for meeting dates, agendas and minutes.

<http://st-ive-parishcouncil.gov.uk/minutes-agendas/>



Devon & Cornwall Police
Building safer communities together

 **101**

Minicom 18001 101

Police Community Neighbourhood Office

Your Community Support Officer is PCSO Steve Edser 30173.

email: CIOSNBMLLST@devonandcornwall.pnn.police.uk

To report a crime call 101 or go to www.devon-cornwall.police.uk

In an emergency call 999

Contact details for St. Ive Parish Council and for Millennium House

Address for correspondence: Millennium House, Century Square, Pensilva PL14 5NF

General Parish matters should be raised initially with the Parish Clerk, Jenny Hoskin, who will present them to the Parish Council.

Telephone: 01579 363096, email: stiveparish@btconnect.com

For accounts matters for the Parish and for Millennium House contact John Body, Finance Officer: 01579 362102, email: millenniumhouseadmin@btconnect.com

Millennium House enquiries and reservations: 01579 363096

email: millenniumhouse@btconnect.com.

On the web: Millennium House Website: www.cornwallvenue.com

Parish website: st-ive-parishcouncil.gov.uk Facebook: facebook.com/stiveparishcouncil

PARISH PUMP ADVERTISING COSTS

The prices for advertising in the Parish Pump are as follows:

The below prices include VAT at 20%:

Quarter page: £10:00 per month or £100:00 for 12 months.

Half Page: £20:00 per month or £200:00 for 12 months.

Full Page: £33:00 per month or £330:00 for 12 months.

Parish Pump Information and Contact Details

To contact the editor please email: parishpump@btconnect.com
or phone the Parish office: **01579 363096**.

Hardcopy submissions by post or by hand to the Parish office, Millennium House, or Millennium House reception.

Softcopy submissions: By email to the editor in MS Word, MS Publisher, pdf, Tiff or jpeg. Please use A4 pages and minimum 16 point font as the Pump is initially produced in A4 size and reduced to an A5 booklet at the printing stage. If in doubt please contact the editor.

Bargain Corner free ads by email to the editor or drop off at the Parish Office.

Deadline for the Parish Pump is STRICTLY 15th of every month

From the Editor

This month it feels like everything I have to say has been said before, probably by me (and probably in these editorials).

I may be wrong about that, of course, but the things I thought of mentioning sounded very familiar, almost as though I had heard them, or, more likely, written them, in the past, at least once, possibly as recently as when I typed the paragraph above.

It could be worse, though, for example I could have forgotten that I had said those things, (things that I won't drag up again, obviously) and then I would have been typing them all here, so at least I've saved myself and, come to think about it, you, some trouble.

At the risk of repeating myself, I prefer not to repeat myself, so I'll sign off with my usual message...

Keep well everybody - Joe

St Ive Village Hall PL14 3LZ

HALL HIRE - £5 an hour

Includes the use of kitchen and electric
(except wall heaters which are on a coin meter).

For bookings ring Amanda or leave a message on 07703 393070

Regular Group and Activity Timetable

| | | |
|--------------------------|--|---|
| Gardening Club | 1st Monday monthly 7:30pm | 01579 382762 |
| St Ive Snooker Club | Mondays & Thursdays 7:00pm | 01579 382315 R Bunkum |
| Yoga | Tuesday 4:30-6.00pm 7:00-8:30pm | 07947 785554 |
| Mobile Post Office | Wednesday 10:30 - 11:30 am | |
| Coffee Morning | Wednesday 10:30 - noon | |
| Methodist Sunday Service | Check timetable or Parish Pump for service dates & times | Katherine or Keith Mutton 01579 382334 |

Chairman's Report November 2022

For a couple of years, the Parish Council has been trying to get the two wooden bus shelters cleaned and painted by Cornwall Council. A couple of weeks ago they were finally completed and they look good.

Those who use the Mel Bar will know Ross who has managed the Bar for the last 12 months since its reopening after lockdown. Ross is moving on, and we would like to thank him for his efforts and wish him all the best for the future.

Millennium House is a great asset to this Parish, and now with new management. Its facilities are ideal for wedding receptions, and parties.

Don't forget the Youth Club 5 – 7
Friday evenings

Alan Moss - Parish Chairman



Opening times for the Mel Bar at Millennium House

| | | |
|-----------|--|---|
| Tuesdays | 7 -11 pm but only when Function Room is in use | Last orders always half an hour before closing. |
| Thursdays | 5 -11 pm | |
| Fridays | 5 -11 pm | |
| Saturdays | 5 -11 pm | |
| Sundays | 12 noon - 5 pm | |

Pensilva W.I report of the October report.

Some people get left holding the baby, but Pensilva WI President Verna Dawe was left holding the giant marrow at the annual harvest supper and auction. Following the bring and share supper, where as always, the members cook up a treat for everyone, the auction began. There was a vast array of produce, crafts and miscellaneous items on offer and even a free gift to those who spent over £1.50 on an item, with members furiously bidding for the produce they wanted. There was plenty for everyone so no-one went home empty-handed.



The Macmillan Coffee morning produced a whopping £320 so far and everybody was thanked for helping it be a great success.

Members were made aware of the many events coming up – carol service, fashion show, walking netball and of course the Christmas Dinner.

Birthdays this month were Verna Dawe, Carolyn Cox and Liz Evans.

November meeting to be held in Millennium House on Wednesday 9th November at 7.15pm will be making a Christmas bauble from card with Alison Willis. Competitions: Flower of the month and a hand-made Christmas card. All visitors will be made extremely welcome.

Supporting Guiding & Scouting Activities in Pensilva 200 CLUB Draw Results for September 2022

| | | |
|------------------------------------|--------------------------------------|-------------------------------------|
| 1st No. 9 Mrs C Wilding | 2nd No. 189 Mrs C Kirsopp | 3rd No. 22 Mrs J Gilbert |
|------------------------------------|--------------------------------------|-------------------------------------|

Thank you for your support

Pensilva Film Club

Well, our largest audience for many months turned out to watch Timothy Spall in “The Last Bus” which followed the journey made by a widower travelling from John O’Groats to Lands End (although a very different Lands End than I’ve ever seen!) using his senior bus pass. Timothy Spall was certainly made for the part which he carried off to perfection.

Our film on Friday 25th November will be “Operation Mincemeat” which is set during WW2 and loosely follows the course of a true, cunning and successful plan to deceive the enemy by leaking false information about the planned allied liberation of Sicily. Colin Firth heads-up a well-known cast which also includes Matthew Macfadyen, Alex Jennings and Penelope Wilton to name but a few.



Pensilva Film Club (Part of C-Fylm, Creative Kernow)

Presents: At Millennium House, Pensilva

Operation Mincemeat

Fri. 25th Nov: 7pm for 7:30 start.

Advance notice that our December film will be on **Monday 12th** as the centre has another booking on our usual night and is very busy in the run up to Christmas. We are hoping to be able to present the latest Fishermen’s Friends movie which I am sure will attract good numbers. I will confirm this next month.

Just to remind folk that C-Fylm membership runs for 12 months from the date of joining and renewal (or new membership) is £6 including the film on the night. Renewal dates should be written on your membership cards.

Thanks to all for your continued support.

Pensilva Film Club – in association with C-Fylm, part of Creative Kernow.

TWELVE YEARS OF WILDLIFE WATCHING IN THE PARISH OF ST. IVE

Since moving to the Parish at the end of 2009, I have been photographing and recording the wildlife which I see at my home on the edge of Pensilva on a daily basis. This month I will tell you a bit about an erratic visitor to my bird feeders... **THE GREENFINCH**



I've seen a fair bit of my greenfinches recently, but it is not unusual for them to disappear for a month or two before they reappear for a while. The male (above and below) is much brighter than the female though the pattern of their markings is the same. Although called a greenfinch (the overall colouring is of a muted olive green) the bright yellow wing stripe is



its most obvious feature. They are much brighter in Spring and Summer when they are breeding, than after the late Summer/Autumn moult and on through winter. Then the markings (and particularly the distinctive yellow stripe) are much less well defined. Throughout the year, I find the distinctive pattern of their folded wings on their back, one of the easiest ways of spotting them. They are a similar size to house sparrows and have a heavy beak which is typical of members of the finch family. These are perfect for breaking open the seeds which attract them to bird feeders. They also feed on insects. I find that the greenfinches are amongst the messiest of the visitors to my feeders! They know exactly what they want and anything else gets unceremoniously thrown to the floor. (Thank goodness for the ground feeding birds!) Wild seeds such as hawthorn, rose hips stones and brambles are also important to see them through the year.

Although social and largely peaceable birds, greenfinches can also be argumentative with both their own kind and other visitors as they fight for the best perch.

In March, greenfinches will start looking for a nest site. (Research shows this may be earlier when garden feeders are available) This will typically be in dense shrubs, but they may use trees (usually firs) if they provide a dense enough cover at a lower height. They will nest in gardens, but tend to prefer hedgerows. They build well camouflaged nests with moss, grass and twigs. These are fairly sturdy constructions, but made without interweaving the material. Greenfinches often return to the same nesting site, but not usually to the same nest. They typically lay between 2 and 6



eggs and can have up to three broods between April and August. The eggs hatch in 12 to 14 days and the young stay in the nest for about 15 days after they have hatched. However, their parents continue to look after them and feed them for a further 3 weeks. The photo to the left was taken in 2017 when we watched the birds begging for food, and being fed by their parents, in this case the mother.

In the past, greenfinches were birds of the woods and forest edges, rarely moving onto farmland or areas where people lived. In the early 1900s this started to change, perhaps because people started putting food out for birds. Greenfinches are found throughout the UK apart from a few upland areas.

Most greenfinches stay in the same area, seldom moving far. However, a few will travel to Europe or Ireland. Research shows that individuals behave differently in different years. This suggests that migration only occurs when either there is a high density of birds due to a successful breeding season or to food shortages in late summer.

Their population declined sharply in the 70s and 80s, probably due to disease. There was a dramatic recovery in the 90s and in 2005 it was amongst the most common garden birds. However, since then, greenfinch numbers have been decreasing again due to an outbreak of a parasitic infection called trichomonosis, which impairs the bird's ability to feed, leading to a 35% drop in numbers of greenfinch sighted in gardens. This may be due to the spread of the infection at feeding stations, emphasising the need to keep them clean.

I hope you manage to see this little bird 'with attitude' in your gardens too.

HAPPY WILDLIFE WATCHING! Hilary

St Ive & District Gardening Club Report - October 2022

A late replacement for our scheduled speaker on Oct. 3 was Jim Stephens, whose garden in Dobwalls we had visited in August. Jim's 'year in the life' of his garden began with the question 'what makes a good garden?' The answer: it's a matter of personal taste with different people preferring anything from a neat, organised, formal garden, to a wild wilderness. Jim likes a garden which gives interest all year round with as many plants and flowers as possible, to ensure the garden is giving back through the year. After 30 years as a private garden, Jim's garden opened to visitors via the National Garden Scheme. The danger of having an open garden is that the Summer visitors can become the main focus but Jim's focus is on an all-year-round garden.

Jim likes to photograph his garden from different angles. He has a point from which he takes a photo at the same time every month of the year, looking down on the garden from above. This way he can compare the garden year to year, how it's changed, what was doing well one year but not now, & vice versa. A simple thing really. Jim showed us a photo from the day before we visited in August this year. The white daisies had greatly suffered in the extreme heat. In the photo from August 2021 the daisies were beaming away, taking centre stage. Taking us through August to September Jim explained that he likes to grow plants in pots, particularly those which need shielding from the harsh weathers. It means he can plant them in their pots then dig the whole pot out & put it indoors/greenhouse. Another reason goes back to the 'what makes a good garden' question: when a plant has finished looking good/flowering he can easily move it out of the garden, and store it away until its season for looking good again. Fuchsias are a favourite; late-flowering so give colour in October & November, a time when other plants are dulling. Cyclamens are another favourite; hardy plants with bright flowers & extremely good space fillers.

November colours in the garden can be dull but Camellias flower well in Jim's garden, a huge variety of sizes & colours keep dullness at bay. Jim finds grasses provide height and fill otherwise empty spaces. Some are a fabulous bronze or gold & can go right through to February. In the autumn/winter months Jim keeps plants that 'give something' near the house, where he spends most of his time, so he can still enjoy the garden in bad weather.

In December the grasses give the most colour, the metallic leaves shining and glistening in the winter sunlight. Jim had a most striking photo of a tall grass plant, the blades proudly displaying their rich bronze, gold colours like an antique masterpiece. At the end of December, Camelia 'Showgirl' blooms; a stunning pink, flowering for months and living up to its name. At this time of year the various evergreens come into their own; different shapes and sizes complementing each other & providing the garden with the full palette of shades of green.

February sees the flowers awake. More Camellias join their friends in bloom, their scent carrying across the garden. Hellebores reach their full height & open their petals, looking over the ground bearing plants. Primroses peer out of the ground, adding their delicate & familiar yellow face.

For March, Jim gave examples of his priority for 'maximum plants/flowers'. He likes to fill areas with bulbs/plants/flowers which will come up at different points of the year. In March, Spring cyclamens pop up where another plant once was (or rather, still is, waiting its turn underground) their small exquisite flowers providing colour in the dark areas. The wood anemone provides the service, happy to wait its turn & give another its go until later in the year.

April sees bluebells appear, their colour matching the blue spring sky. Jim likes to plant in the same patch so he gets a variety of height between ground-growing and flowering plants.

In May, June & July, Jim's garden is fuller, greener, brighter. The azalea shows off its prettiness & glorious scent. The variety of ferns adds to the green palette of the evergreens. Jim leaves self-seeders to their own devices, providing surprises through the summer. One year a self-seeded orchid appeared, the most stunning, intricate purple flowers neatly covering the stem. July bursting with colour, Californian poppies, lilies, angel wings, Miss Willmott's ghost, so many!

It was inspiring to see Jim's photos & hear how he thinks about his garden 'through the year'.

Next meeting: Mon, Nov 7, 7:30pm. Speaker: Sarah Anthony. Topic: Urban Biodiversity.

St Ive Village Hall, PL14 3LZ. Refreshments (tea/coffee & biscuits): £1. New members welcome.

My name is Emily Welch.

I've recently qualified as a level 2 hairdresser and I'm looking to build up my clientele.

I specialise in hair-ups, braiding, blow-dry cuts & perms. I'm starting work on Mondays at Wellies in St Cleer from October. As I'm just starting up, all services will be at 30% discounted rates.

Please contact me on 07939 509643

Interested in joining a group of birdwatchers?



Join the EAST CORNWALL BIRDERS

All levels of experience welcome, beginners to experts. We learn from each other. Bird Outings on the first Thursday of each month, to coast, estuary or moor etc. We focus on east Cornwall and west Devon, with occasional trips further afield.

Interested? Want more information? Contact: Angus Parker
E-mail: angusmmparker@gmail.com Mobile: 07860 109586

Millennium House Community Transport

Do you need transport to and from the doctor or hospital?

Millennium House Community Transport's aim is to connect local communities and reduce social isolation.



If you need transport to Hospital, doctors or vaccination and have mobility issues, or are unable to drive to your appointment, please contact Millennium House on:

01579 362919 or 01579 363096 and we will try to help.

To volunteer as a driver please call Millennium House on **01579 363096**.

3 'green' events in one great weekend

all at Millennium House Pensilva!

TREGOVENEK – A PLACE OF HOPE

Friday December 2nd, 7pm - 9pm

Introducing Pensilva's brand new community farm.

Come along and hear all about the ideas for the creation of the farm, add your own ideas and find out about opportunities for getting involved.

WHAT NEXT? A COMMUNITY CONVERSATION

Saturday December 3rd, 10am - 2pm

Coming together to create a plan for our future.

Organised by The Together Project.

CELEBRATING 20 YEARS OF PENTIDDY COMMUNITY WOODLAND

November 28th - December 4th

A display in the foyer of Millennium House

Please show your support for these amazing events by coming along and joining in. Absolutely EVERYONE welcome!



20 years of Pentiddy Community Woodland!

Can you believe that 20 years ago Pentiddy Community Woodland was a bare field? Now a rich, diverse habitat, it provides a beautiful sanctuary for wildlife and walkers alike. This is thanks to the dedicated team of trustees and practical volunteers who have been caring for the land over the years. From the planting of the first

of 6,500 trees (4th November 2002!) to the thinning and removal of mature trees, from bramble clearing to litter picking, pruning to path clearing. In sunshine and hail storms people have done their bit. Add to that the setting up of a charity, fundraising, publicity, finances, and you start to get an idea of the work and love that has gone into the woods.

One of our successes is that everyone involved seems to genuinely enjoy our meetings! Despite all that needs to be discussed *our meetings are productive, relaxed, and fun and usually include cake!* Many of the trustees have been with the charity from its creation all those years ago and show no sign of wanting to leave. However, it would be great to mix things up a bit and to welcome in some new helpers. So our 20th anniversary AGM will be a little different....

On the **20th November at 2pm** we will be gathering around a fire in the roundhouse at Pentiddy and would love to share a celebratory mug of mulled juice or mulled cider (and of course a slice of cake) with all of you who enjoy walking in the woods (dogs very welcome). This will be followed by a brief **AGM from 2:30 – 3:30** for which everyone will be welcome to stay to hear how things are going and maybe even to opt in as a trustee or to take on one of the very simple roles needed to keep the woods open, thriving and safe. The long-standing chair, treasurer and secretary are all stepping aside to make way for others to step up. Maybe this is your time!

Please come along and help to take care of this magical place.

During the second half of November there will be a display at the entrance to the woods with photos, newspaper cuttings and a magazine article dating back to the planting of the first tree back in 2002.

Pentiddy Community Woodland (Charity no.1094857)
pentiddycommunitywoodland@gmail.com

Telephone: Ele on 01579 363775



Energy Events at Millennium House

The Together Project would like to extend a huge 'Thank you' to everyone who got involved with our energy events at Millennium House during October. Increased financial pressures, energy costs and energy efficiency

have been at the forefront of our minds, and we are grateful that we have been able to support our community with these pressing issues. We were joined by representatives from Community Energy Plus, an award-winning social enterprise that provides complete energy answers to help householders in Cornwall enjoy warmer, energy efficient homes as part of a more sustainable future. We are also incredibly grateful for the local community members that volunteered to share their own knowledge and experience of DIY house improvements, these provided an inspiring insight into what can be achieved on a low budget.

Travelling Blackboards

The Together Project has sent out blackboards with questions for the people of the parish. The travelling blackboards will continue to be hosted by local groups and businesses in the area. The aim of the boards is to gain insight into what people feel is working well within the parish and what they think would help to create a more positive and sustainable future.

Thank you to everyone who has got involved so far!

Our December Event

Look out for formation about our upcoming event on December 3rd. Everyone is invited to come and help shape a positive future for our parish.

POWER OF THE PARISH Nominations.....

The Together Project has been established not only with the aim of improving our local environment, but also to help strengthen our community. Part of this aim is to recognise and celebrate our already existing strengths.

So with this in mind, we would like to hear from you, please get in touch if you know someone within our community who is making a positive difference to our parish, whether it be social or environmental.

We want to hear from you and celebrate the great things that are happening in our Parish.

How to get involved:

If you would like to be part of the Together Project in any way, big or small, please contact: posicrp@gmail.com or phone 07768 130520

Follow Us: Intagram: togetherproject2022 Facebook: The Together Project

CALLING ALL COUNTRY DANCERS AND CALLERS

Pensilva Country Dancing Club has now started up again and would welcome new members. We would also welcome anyone who would be willing to take a turn at calling for the dances - help can be given for the learning process!

We meet fortnightly in the Art Room at Millennium House, Pensilva for a couple of hours on a Thursday evening from 7pm to 9 pm. If you are interested in joining or calling, please ring Frances on 01579 363718, or just come along to one of our upcoming sessions on 3rd & 17th of November and 1st December.

Whats the point.

SHARE Recycling for Charity project.

Many collect because it's recycling items that can't be recycled elsewhere and we also make money for our charities.

Every box of biscuit wrappers or cheese packets, Pringles or toothpaste tubes we send to TerraCycle gives us points, every 6 months we redeem those points as money for charity.

The manufacturers determine what items we can send to gain points.

Since 2019, we have raised **£8443** for Kicks Count



KICKS COUNT charity is helping to reduce stillbirths

by educating mum's-to-be, about the importance of their baby's kicks. There were 2,597 stillbirths in the UK in 2021. **7 babies are stillborn every day, leaving family and friends completely devastated.**

It's Pregnancy and Infant Loss Awareness Month, if you're feeling strong you should visit Kicks Count web site [Kicks Count](https://www.kickscount.com) or FB page.

www.facebook.com/kickscount

The INK CARTRIDGES we collect are the only item that the project makes any money from. Last year you helped us cover all our project expenses, printing and lots of parcel tape. THANK YOU. Amazing support.

New items now accepted: PP5 Chinese Takeaway tubs, Tupperware and other brands, old lunch boxes, plastic reusable bottles including old baby's bottles.

For a list of items we can collect for our charities and locations you can bring them to, please visit our web site www.south-hill.co.uk/charity-recycling or email SHARE@south-hill.co.uk or you can call/text Ali, project lead, on 07305 044049.



We can Help You, Reduce Your Waste & Help Charities.

MAKE A POINT OF RECYCLING MORE.

REMEMBRANCE SUNDAY is on 13th November this year.



We will be holding the traditional wreath-laying ceremony at the memorial stone outside Millennium House, Pensilva, at 11 am.

This will be followed by the **Remembrance Sunday Service** in St John's Church, Pensilva.

All groups and individuals are invited to lay wreaths of remembrance at the ceremony, and we will gather in preparation at 10.50 am. Geoff Cox.

St Ive Parish Church



Advent Carols Service

Sunday 27th November At 6:00pm

Join us to celebrate the start of





St Ive Parish Church

**Remembrance
Service 2022**

Sunday 13th November
at 10:45am

Everyone welcome



Christmas Fair

Saturday 26th November 2022

10am - 3pm

Millennium House



*Festive treats Christmas Gifts
Santa's Grotto*

*Crafts Stalls Choir
Raffle*



St. Ive Village Hall PL14 3LZ

**Santa is
in for**



**popping
tea!**

Saturday 10th December
4pm until 6pm

Children's buffet tea in a box
Selection box for every child from Santa
Santa will read a story
Refreshments available for adults
Cost £5 per child
Concessions for large families
Maximum 50
Book Tickets Amanda: 07703 393070

**St. Ives Village Hall, The Cross,
St. Ives, PL14 3LZ**

Skittles and Supper – 19th November 7pm

Game of skittles

Raffle

Pasty supper

Refreshments

Cost Adults £5.00 Children £2.00.

Numbers will be limited. For ticket contact

Amanda 07703393070 / Rosemary 01579 384810.

Concessions for large families

Christmas Wreath Making

Saturday 3rd December 10am until 12.30pm

Materials will be supplied.

Workshop run by Beth Sheldrake (qualified florist).

Numbers will be limited, so must be booked in advance.

Book direct mobile: 07708 023750

Cost £15

Refreshments available

Raffle

CALLINGTON TOWN MARKET

6th November 2022

Come and Support Your Local Traders

10.00am until 2.00pm

Pitches start from only £10 each!

Town Hall, Callington

Car parking is FREE in all car parks on Sundays

Access to the market can be gained through the Town Hall

**For more information, or if you are a trader wanting to book a
pitch, please call 01579 384039**

or email market@callington-tc.gov.uk

Future 2022 Markets held on - 4th Dec

**2023 Markets - 5th Feb, 5th March, 2nd April, 7th May, 4th June, 2nd July,
6th Aug, 3rd Sept, 1st Oct, 5th Nov, 3rd Dec**

Heligan's lit paths new location for memory walk

Children's Hospice South West (CHSW) is excited to announce a new location for its annual Moonlight Memory Walk. This year the event will be at The Lost Gardens of Heligan, which is supporting CHSW as its charity of the year.

The Moonlight Memory Walk will give people the opportunity to remember and celebrate the lives of their loved ones by participating in an uplifting memory ceremony before walking 5km in the calm and beauty of Heligan's lit paths. There is also a virtual option for those wishing to take part in their own time and location.

Walkers are encouraged to raise sponsorship in memory of their loved ones, helping to raise funds to ensure children and young people from across Cornwall can access the care and support offered by Little Harbour children's hospice in St Austell.

Anyone over the age of 12 can take part and dogs on leads are welcome.

To get your ticket simply visit www.chsw.org.uk/moonlight or call 01726 871 800 for enquiries.

Sponsored by:

SURF BAY
LEISURE
New & pre-owned holiday caravans & lodges

**children's hospice
SOUTH WEST**

**moonlight
memory walk**

**Walk in memory
of your loved one**

Saturday 12 November 2022

Walk in the calm and beauty of Heligan's lit paths, or join us virtually,
for an uplifting evening whilst supporting local families with every step

Register today www.chsw.org.uk/moonlight

New location!
The Lost Gardens of Heligan

Making the most of short and precious lives across the South West
Registered Charity No. 1003314

The poster features a purple background with a yellow crescent moon and stars. A circular inset shows a group of people in purple raincoats and hats walking at night. Another circular inset shows a path lit with candles. At the bottom right, there is a row of colorful smiley face icons.

BAKED POTATO



LUNCH

BRING and BUY STALL

St John's Church

Pensilva

Thursday 3rd November

12.00 to 1.30 pm

Donations in aid of church funds

Good Grief Cafe

We can grieve for many reasons:
the death of a friend or relative;
the diagnosis of a friend or relative
with dementia or a terminal illness;
the loss or illness of a pet;
the loss of a job;
homelessness;
loss of mobility or driving licence;
closure of your Church or Chapel;
loss of freedom;
the closing of a support group;
the loss of stability in society.
Any of these can cause us to
grieve, so the Good Grief Cafe is
for anyone who is grieving in any
of these ways and no doubt
there are others too.
So please feel free to come along
and eat our cake, drink our tea
and just chat if you want to,
or just listen if you don't.
All are welcome.
Please use this as an opportunity
to invite someone to
come with you.



St John's Church

Wednesday 16th November 3.00 to 5.00 pm

Contact Geoff on 01579 362698

AFTERNOON TEA

Saturday 19th November

CAKE STALL

RAFFLE

Bring & Buy



St John's Church Pensilva

Raising funds for our
work in the community

Teatime Church



For children and their families

Sunday 20th November

3.45pm

St John's Church
Pensilva

Sharing a Bible Story

Playing Games

Singing and Praying Together

Eating Tea



For more information contact: Rev Becca Bell
Rev Li Selman

revbeccabell@gmail.com
revliselman@icloud.com

Pensilva



If you have
memory problems
or
you are a carer
for somebody
who does
and
would like to
meet others
who understand
your situation
then join us at
St John's Church

MemoryCafé

Thursday 24th November
2.00 to 4.00 pm

Contact Geoff 01579 362698

FOOD for
THOUGHT



SUNDAY

27th

November
5.00 PM

St John's Church
Pensilva

A time of fellowship
and informal worship
with a shared afternoon



For further information
& to arrange transport:
Geoff 01579 362698



**Tuesday
29th
November**

**St John's
Church
Pensilva
on the
last Tuesday
of the month**

**2.00
to
4.00 pm**

**Contact Kathleen
01579 363686**

CITIZENS ADVICE CORNWALL - APPEAL FOR VOLUNTEERS.

Citizens Advice Cornwall is appealing for people to come forward as volunteers, to not only help with providing advice and support, but to also help with fundraising and raising awareness.

Like many charities, Citizens Advice Cornwall relies heavily on volunteers to be able to continue its work. As the cost of living and energy crisis deepens, the demand for the charities services across the county is increasing.

Fundraising Ambassadors are needed for a variety of roles including organising and attending fundraising events, talking to groups and organisations, organising collection tins etc. We also need volunteer advisors and administrators.

Last year, Citizens Advice Cornwall helped more than 9,000 people, with almost 40,000 issues, write-off debt worth a total of over £1 million and gain income worth more than £8.1 million.

It costs Citizens Advice Cornwall around £1.5m to run the service each year, a figure that is set to rise as the need for help increases.

Citizens Advice Cornwall provides free, independent, confidential advice on a range of subjects for everyone, including benefits, debt, housing, relationship issues, employment and redundancy, consumer, legal issues and more.

To find out more please email tamsin@citizensadvicecornwall.org.uk

Unity Methodist Church St Ive with Bealbury and Blunts

Meetings at St Ive Village Hall unless stated otherwise

Services for November 2022

| | | |
|---------------------------------|----------|---|
| Sun 6th Nov. | 10.30 am | Mr Noel Morgan |
| Sun 13th Nov. | 10.45am | United Remembrance Service at St Ive Parish Church. |
| Sun 20th Nov. | 11.15am | United Service at St Ive Parish Church |
| Sun 27th Nov. | 10.30 am | Mr Keith Mutton |

ST JOHN'S CHURCH, PENSILVA

A united congregation of the Church of England & the Methodist Church

Services for November 2022

Sunday 6th 11.00 am Rev Andy Day

Sunday 13th 10.45 am Wreath laying at the Village Memorial
followed by a service of Remembrance in St John's Church

Sunday 20th 11.00 am Rev Becca Bell *Holy Communion*

Sunday 27th 11.00 am Mr Martin O'Connell
5.00 pm Food for Thought

Thursdays 10.00 am Morning Prayer Fellowship

NOVEMBER EVENTS Please see posters for full details

Thursday 3rd 12.00 - 1.30 pm Baked Potato Lunch

Wednesday 16th 3.00 - 5.00 pm Good Grief Café

Saturday 19th 3.00 pm Afternoon Tea

Sunday 20th 3.45 - 5.00 pm Tea Time Church for children & their families

Thursday 24th 2.00 - 4.00 pm Memory Café

Tuesday 29th 2.00 - 4.00 pm Knit & Natter

For further details or if you know of any illness or need in the village, please call Geoff, 362698 or Frances, 363718



Action for
Children



NEW YOUTH GROUP FOR 11-19 YEAR OLDS

UP TO 25 YEAR OLD WITH SEND

EVERY FRIDAY 5.00-7.00PM

FREE OF CHARGE & OPEN TO ALL.

VENUE: MILLENNIUM HOUSE, PRINCESS RD, PENSILVA,
LISKEARD PL14 5NF

ACTIVITIES, DRINKS/SNACKS & A CHANCE TO HELP BUILD A
YOUTH LEAD GROUP IN YOUR AREA.

FIND OUT ABOUT US @:

WWW.SERVICES.ACTIONFORCHILDREN.ORG.UK/KERNOW-CONNECT

PENSILVA VILLAGE HALL

We are now open and back in business!

Anyone wishing to book the hall for meetings, birthday parties or fundraisers, please contact Peter or Jackie Browning on **01579 363212** or email **peterpensilva@gmail.com**

Please note that as well as hall rent there is a coin meter for



MOBILE LIBRARY



The County Mobile Library visits our area every four weeks, always on a Friday. You can now browse the shelves again, but you can still pre-order books if you prefer.

Next visits: **Nov 18, Dec 16.**

Stops at The Victoria Inn, Pensilva from 10.25 to 10.45am; and Quethiock bus stop from 11.00 to 11.20am.



Struggling with Sight Loss?

iSight Cornwall offers practical help to people living with sight loss in Cornwall including:

Low Vision: Advice for low vision aids

Assistive Technology: Advice on products

Benefits Advice: Assistance to claim entitlements

Equipment Demonstration: Advice on gadgets

Social Clubs & Activities: Links to clubs & activities in the county

For more details Telephone 01872 261110 or visit

www.isightcornwall.org.uk



Tamar Area Prostate Support (TAPS)



DON'T IGNORE THE SIGNS

- A need to urinate frequently especially at night
- Difficulty in starting to pee
- Weak flow
- Feeling that your bladder has not emptied fully

If you would like to know more about us please contact one of the steering group listed below or email tapsinfo555@gmail.com

**Come and join us on the first Tuesday of the Month
10.00 at the Compton Park Engine House Callington
for a friendly chat and a coffee.**



Paul Mansell 01822 832179 - Harry Lawson 01579 383258

John Stewart 01822 833343 - Stephen Williams 07735 389883

Albert Doidge - 01822 832471

**Prostate Cancer UK is a registered charity in England and Wales (1005541)
and in Scotland (SC039332). Registered company 02653887.**

COMMUNITY SPEED WATCH

Community Speed Watch aims to encourage safe driving, to reduce accidents.

The Liskeard CSW Group operates at a number of sites in South East Cornwall - East Taphouse, Doublebois, Dobwalls, Liskeard, two locations on the A390 in St Ive, and at two locations on Foredown.

Three new sites in Pensilva have recently been added.

To cover the additional sites, and to increase the frequency of observations at other sites, there is a need for additional team members.

Full details of how Community Speed Watch operates can be found at:

<https://www.communityspeedwatch.org>

Registration is simple, and there is online theory training. Following successful completion of the online training, new members will be contacted to take part in equipment training then practical activity (speed monitoring).

Each activity lasts no more than two hours, including travel to site, setting up equipment, team briefing, observation for one hour, taking equipment down, with team debrief, and agreement on next activity date and time.

Teams are made up of a minimum of two members (ideally three, and no more than four).

This is an opportunity for individuals living in Pensilva and St Ive to contribute to the safety of the community.

COMMUNITY SPEED WATCH

Millennium House Coffee Shop Opening Hours

We are open Tuesdays, Wednesdays and Fridays, 9am to 1pm
(to coincide with Post Office days).

Our intention is to open more days and for more hours as soon as Covid regulations allow.

Covid precautions are in place at all times, providing a safe environment for our customers.

All Being Well

We are still open for three mornings a week. A maximum of six members can now attend at one time.

Opening hours:

Monday, Wednesday and Saturday, 9am to 1pm.

Maximum six members at a time for each of three slots within each session: 9:00 to 10:20, 10:20 to 11:40 and 11:40 to 13:00

Prior booking is essential

To book yourself in or for any enquiries, call in at the gym or telephone on **01579 363890**, during the opening hours listed above.

22 years working in our local community to improve health, fitness and well being.

Badminton at Millennium House

Come and join our relaxed and friendly group.

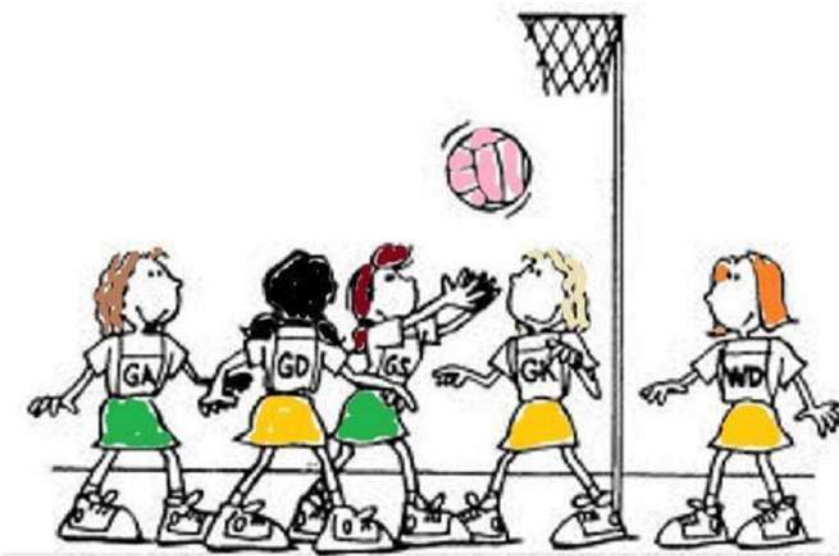
Mon & Tue 7:30 - 9:30pm

For further info phone Nigel or Carol on 01579 363594 or 07885 798370

Ever tried...

Ladies Walking Netball?

Come along to Millennium House, Pensilva

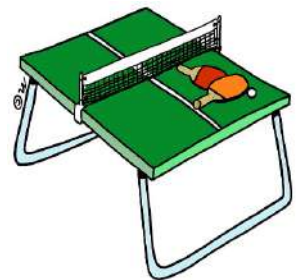


**Thursdays
4.00pm - 5.00pm**

£2 per session

**For further info contact rosemaryfarley@gmail.com
or Tel. No. 01579 384810**

ST. IVE COMMUNITY SOCIAL EVENING



**VILLAGE HALL
FRIDAY NIGHTS 7.30PM**

MILLENNIUM HOUSE

COMMUNITY CENTRE, AND DYNAMIC EVENT
VENUE IN THE HEART OF EAST CORNWALL



Conferencing

We have four meeting rooms for all your corporate needs.



Function Room

For parties, discos, or just larger events; with adjoining kitchen and bar.

Our Facilities

Sports Hall

For sports or larger events requiring a stage, the sports hall is our biggest venue.



Coffee Shop

Providing tea, coffee and cake. And for something stronger, there's the Mel, a licensed bar.



Enquire today:
01579 363096

www.millenniumhouse.org.uk
PRINCESS ROAD, PENSILVA, PL14 5NF

What Do We Do?

From wedding to wakes, kids or adults, corporate or community, we can host and cater your event. If you have an idea that's not covered here, get in touch and see if we're the right venue for you.

We're also home to:

- ✓ The Mel bar
- ✓ All Being Well Fitness Centre
- ✓ Post Office
- ✓ Sunflower Park kids playground
- ✓ Extensive playing fields
- ✓ Community Library

Bargain Corner Free Ads up to £50

Ads are free for items up to £50. £5 charge for items over £50. Please leave a note at Millennium House reception, ring the Parish Office on **01579 363096**, or email **parishpump@btconnect.com**.

***** Please let us know when your item has sold *****

Glass top, beech effect **TV & Video table** with drawer. VGC. **£10. 01579 363281**

Computer desk **£20**. Drop-leaf **table £30**. 2-seat **sofa** with footstool **£45**. All VGC. **07861 083081** Pensilva. NB correct'd No

Electric **Cement Mixer GWO £50**
Elec. **Towel Radiator** 600w x 750h **£40**
Karcher **hard floor cleaner £40**
01579 346893

Bosch Hedge Trimmer £20.
Bosch Plainer £15. **Mult-tool £15**.
Elec Sander £10. All in perfect condition.
07926 627291 (Pensilva)

Four motor biker jackets at £10 each
1. Red/Black, Frank Thomas, Size 44.
2. Black leather, ladies, Size 12-14.
3. Black leather, Size medium.
4. Black/Red, Size XL.
All in good condition
01579 346986.

Prestige 5 ltr high dome **pressure cooker**. As new. **£25**.
Delux Gourmet **stove top grill**. **£10**. As new. **01579 363281**.

Car roof box. Opens both sides. Only used once. Full instr's. L 2300mm W 820mm H 360mm. **£50. 01579 362217**.

Axminster 2 speed forward and reverse **drill**, in GWO **£10** and a **Power Planer PPL800 - 800W** in GWO requires a new blade **£10** or **£15** for the two items.

2 Empty Dewalt Tool Cases, 1 general tool box with free Dewalt cordless drill no battery. **£30**.

10 wooden **moulding planes** Usable cond. 1 wooden spirit level & scribe. **£50**.

Six coils of **industrial steel cable** now surplus to requirements **£35** the lot.

New 12'x3'1" good quality hard **vinyl flooring**, light/med brown wood effect **£15**.
01579 384658 (Safe Distancing if reqd.)

Single bed & headboard. Never used. St. Ive area. **£15 ono. 07522 484979**.

Ladies Rocketdog wedge **flipflops** black with red and mixed colour beads on material, size 5. still in box as new paid **£10**.
Upton Cross/Minions area
07368 528398.

Please let us know when your items have sold.

To Parish Pump advertisers – scammer alert

We have been informed that there may be scammers calling Parish Pump advertisers, offering to carry adverts in other publications but in reality fraudulently seeking to obtain personal details and/or payment. The callers may claim that they are supporting a good cause.

We strongly urge our advertisers to be on the lookout for any suspicious behaviour of this nature. Before committing to anything at all, always check that the offer is bona fide and that the caller really is who they claim to be. If you have the slightest suspicion that it could be a scam, you should contact Action Fraud immediately and before divulging any personal details.

Action Fraud, the UK's national reporting centre for fraud and cybercrime, pass reports from the public to the National Fraud Intelligence Bureau. The telephone number for Action Fraud is 0300 123 2040 and there is a page on their website actionfraud.police.uk/reportscam where you can report your suspicions. Never divulge any of your own private data to cold callers but, if you can manage to obtain the telephone number or email address of the caller, that will always be useful. Never open any link or attachment in an email unless you are certain that it is legitimate.



Group Travel

Day Trips & Coach Holidays

Enterprise Park, Midway Road, Bodmin, Cornwall PL31 2FQ Tel: 01208 77989

Coach Excursions & Tours 2022

| | |
|----------------------|------------------------------------|
| 2nd - 4th September | Burghley Horse Trials |
| 13th September | Widcombe Fair |
| 17th- 21st September | Llandudno, North Wales |
| 8th October | Horse of the Year Show, Birmingham |
| 12th October | Goosey Fair, Tavistock |
| 5th November | Bridgwater Carnival |
| 12th November | Longleat Festival of Light |
| 25th - 28th Nov | Turkey & Tinsel - Torquay |
| 3rd December | Bath Christmas Market |
| 10th December | Exeter Christmas Market |
| 18th December | Cornish Christmas Lights |
| 18th December | London International Horse Show |

Call Dawn or Robin on 01208 77989 for Wedding, Birthday, Christmas Party and all Private Hire transport requirements.

Call: 01208 77989 for bookings and brochure
website: www.grouptravelcoachhire.co.uk

Bodmin MOT Centre

01208 77989

Garage Services
MOT Testing Station
Classes 4, 5 & 7
Servicing & Repairs
High Vehicles & Motorhomes
Brake Test & Headlight Alignment
Pre MOT Inspections
Annual & Interim Vehicle Servicing

Commercial interim inspections available
including brakes and lights

Helping you stay compliant

Bodmin MOT Centre
at Group Travel
Enterprise Park, Midway Road,
Bodmin, Cornwall PL31 2FQ

Colin Swinburne Electrical Services



All aspects of domestic and commercial electrical work.

Inspection and testing (EICRs), fault finding, new installations, rewires, consumer unit replacement, additional sockets, lighting upgrades, garden power and lighting, extractor fans and more.

Electrician in Pensilva. Free advice and quotes.



CSES@btinternet.com 07974499138



Debbie Hicks - Counselling and Psychotherapy

Caring, confidential counselling for all.

I work in a therapeutic relationship to help you understand yourself better.

I offer a warm, approachable, relaxed environment for you to untangle your thoughts and emotions.

www.debbiehickscounselling.co.uk

Email: debbiehicks10@gmail.com

07851 133782

More info on my website or by contacting me.



Naomi's Footcare Service

I provide a personal toenail-cutting service within the comfort of your own home.

To include removal of calluses, corns, hard skin, and reduction in thickening nails.

- ✓ Trained foot health practitioner.
- ✓ Fully insured
- ✓ DBS checked.

naomiturner84@gmail.com

07809 690385

Trystan Phillips



Carpentry/Joinery & Property Maintenance



35 Years' Experience

Fully Insured Including Public and Product Liability

All aspects of Carpentry undertaken including:

Bespoke Carpentry & Joinery , Kitchen Installations, Doors, Partitions, Skirtings, Architraves, Shelving, Timber Floors renewed & repaired, Laminate Floors fitted, Timber Windows repaired including 'Sliding Sash'. Plus General Property Maintenance, including Painting/Tiling & much more!

07397 153792 trystanphillipscarpentry@gmail.com 01579 363150

Debbie's Care Services

Tel. 0777 948 3230

Hello, my name is Debbie. I am a local lady who has been working in the community for over 30 years.

I provide the following services and more!

- Assisting bathing / showering
- Preparation of meals
- Cleaning / Shopping / Ironing
- Companionship / Friendship and emotional support
- Assisting with mobility
- Day, Evening and Night Care

New, High-Quality, Local
Decorating Service

EDEN SERVICES



Interior / exterior decorating, including spraying

All work fully insured and guaranteed

References available

High quality work at sensible prices

Over 25 years experience

Call Julian for a free, no obligation quote

Mobile 07775 515036 Office 01579 641129

Find us online:
fresh_prop.co.uk



Top quality carpet, upholstery & hard floor
cleaning services based in Callington

Long-established cleaning professional

Domestic & commercial

NCCA qualified & member

Steam cleaning & dry carpet cleaning

Tile & grout + natural stone clean & seal

Vinyl & LVT including Amtico & Karndean

Call 0800 3893393 or 07905 188459

Or email nevil_fresh@msn.com

TRADITIONAL STONE SERVICES

CLASSIC & TIMELESS
STONE MASONRY
AND LETTERING

MEMORIAL CLEANING

COMMISSIONS TAKEN

01579 363693

OR

07507 782282



Domestic Electrical
Property Maintenance
Interior & Exterior Work
Carpentry :: Decking
Kitchens :: Bathrooms
Wall & Floor Tiling
General Plumbing

MCCARTHY PROPERTY MAINTENANCE

**Electrical Safety
Register**

incorporating
ELECTSA + ECA
Certification Ltd

HIGHLY REGARDED LOCAL BUILDER
COMPETITIVELY PRICED
COVERING THE SOUTH WEST

Contact Dominic

07968 599 675

01579 362 945

info@mccarthypropertymaintenance.co.uk

www.mccarthypropertymaintenance.co.uk



Maintaining and preserving our
countryside for the benefit of all

Dry Stone Walls

Cobblestoning

Stone faced walls

Hedgelaying/steeping

Land management

All aspects of Landscaping

Mobile: 07539 296799 or

Email: info@just-in-stone.co.uk

Westwood Garden Maintenance



Antony Watts

Grass Cutting, Clearance

Weeding, Turfing

Hedge Cutting

Patio Cleaning, Planting

Regular Visits / One-off Contracts

Residential & Commercial

FREE ESTIMATES

01579 362019 www.westwoodgm.co.uk 07952 094472

JPH Plastering and Rendering

Internal plastering

Internal and external rendering

Internal/external painting & decorating

Property maintenance

Landscaping and land management

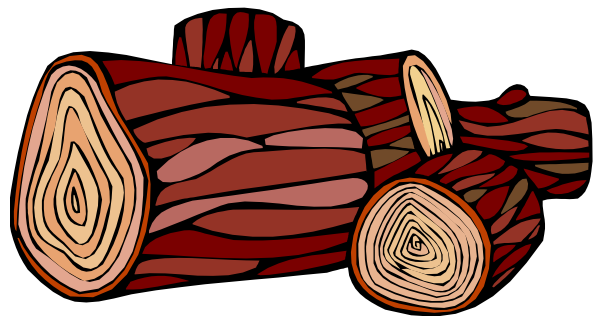
For estimates and no obligation quotes

contact Justin on:

07539 296799 or

info@just-in-stone.co.uk

SEASONED LOGS



MIXED LOAD

or

HARDWOOD

Tel. Jonathan

Mobile 07966 070725

or

01579 363157

PENROSS

Rosecraddoc Lodge Holiday Bungalows

(Between Pensilva & Liskeard)

Perfect for family & friends coming to visit!



Sleeps 4

Sorry no pets or smoking

Tel: Julie 01579 362221

Email: penhargetfarm@gmail.com

NICOLA GREENE

BSc (hons) Podiatry MChs

HPC Registered Chiropodist/Podiatrist

**Home Visit Practice treating all
your foot care needs:**

- Nail Cutting
- Corns and Calluses
- Thickened Nails
- Dry Cracked Skin
- Verrucae
- Foot Pain
- Diabetic Foot Assessments
- Wound Care

T: 01579 590027

M: 07786164205

E: nicki_greene@yahoo.com

Matt's Windows

Repair of Windows, Doors & Glass Unit Replacement

Making draughty windows great again!

T: 01579 641228

M: 07533 387368



KV Accounting Solutions

ACCA

Local Accountant offering fixed fee accounting services

With over 20 years experience, I am a fully qualified, friendly, local accountant

- ✓ Annual Accounts for Sole Traders and Partnerships
- ✓ Book Keeping & Payroll
- ✓ Personal Tax Planning
- ✓ Company Accounts
- ✓ Business Support & Advice

- ✓ Self Assessment tax returns
- ✓ iXBRL tax filing
- ✓ Tax investigation Fees Insurance
- ✓ Company Secretarial work
- ✓ Tax calculations for Sole Traders and Partnerships

Kate Vaughnley FCCA - Chartered Certified Accountant
Website : www.kvaccountingsolutions.co.uk or Email : katevaughnley@gmail.com
Telephone : 01579 364083



**NATURAL GAS - LPG - OIL
BOILER INSTALLATION**

BOILER SERVICE & REPAIR

LONG WARRANTY FREE QUOTES

07859848288

bagasservices@outlook.com

533335

**GAS
safe
REGISTER**



Affordable Counselling

Caring, confidential,
non-judgemental

- Increased confidence and self esteem
- Help to cope better at difficult times
- Improved relationships
- Clarify confused thoughts & feelings
- Assertiveness
- Personal insight
- Improved emotional health
- Available for youth and adults

Isabelle McGarahan BA, PGCE
Dip in Therapeutic Counselling,
Accredited ACC, DBS cleared
www.im-counselling.org email:
isabelle@im-counselling.org
01579 344090/07857326229



P BRADLEY PLUMBING & HEATING

Email: info@pbplumbingheating.co.uk

Web: www.pbplumbingheating.co.uk

Facebook: @PBradleyPlumbingandHeating

NO JOB TOO BIG OR SMALL

24hr Emergency Call Out

Based in Liskeard

Call Today 07598956760

***"The complete bathroom
installation service"***

**New bathrooms fitted,
floor and wall tiling specialist**

General Plumbing including:

- Bathroom makeovers
- Dripping taps and burst pipes
- Pump and cylinder changes
- Radiator upgrades and additions
- Specialist in Leadwork
- No job too small
- No Call out charge



W. Hale
Plumbing

Friendly Service, Quality Work

NO VAT

**City and Guilds Qualified
established 1983**

Call William Hale on

Tel: 01579 362132 Mobile: 07826 699719



Kiln Dried Firewood
Kindling & Firelighters
Eco Heatlogs
LPG Bottled Gas
Patio, BBQ & Camping Gas
Coal & Smokeless Fuel



0800 8021 223
sales@loganslogs.co.uk
www.loganslogs.co.uk

Heel 2 Toe Footcare

Tired Aching feet.

Corns, Hard skin, Verruca.

Fungal infected toe nails, or
toe nails require cutting.

Diabetic feet also treated and
regularly checked.

I can help to keep your feet
looking and feeling good.

I am a trained Foot Health
Practitioner to Diploma Level, fully
insured & DBS checked.

I can do home visits via an
appointment.

Call Penny: **07746 926146** for
further information. **Please note
new number May 2021.**

J. J. Child

Plumbing and heating engineer.

Oil appliance service, repair and breakdowns.

Over 30 years experience

Call John: 01579 362336 or 07837 921086





Fencing
 Paths & Steps
 Turf & Astro turf
 Driveways
 Retaining walls
 Digger work
 Footings & foundations

Patios
 Rendering
 Decking

And more

Free no obligation quotes

Call Rob on:

**07518246666 or
 01579 641802**

Window Cleaner

Window Cleaner

Also any upvc cleaned

i.e. fascias, gutters, etc.

gutters cleared & unblocked

Please phone Rob

07709 053464

Window Cleaner

Window Cleaner

Save Costly Energy!



SOLARTEC Windows & Conservatories Ltd

**'A' Rated WINDOWS & DOORS
 at BEST PRICES EVER!**



Professionally fitted and finished by us with a
 10 year ins. guarantee.
 In all colours



NEW

**FACTORY SHOP
 SUPPLY ONLY**

For all your windows, doors, conservatories,
 fascia, trims, guttering and sealants

**7-10 DAY TURN AROUND ON WINDOWS,
 DOORS and CONSERVATORIES**

TEL: 01579 343425

FAX: 01579 344500

WEBSITE: www.solartecwindows.co.uk

EMAIL: sales@solartecwindows.co.uk

KEEPING JOBS IN CORNWALL

PMB Book Keeping

Friendly Book Keeping Services:

Purchase and Sales Ledger

Bank Reconciliations

VAT returns - Making Tax Digital

Self Assessment Tax Returns

And More

Fully Qualified, Insured and
 Licenced

T: 01579 683624

E: pmboutsourcing@outlook.com

INDEPENDENT FAMILY FUNERAL DIRECTORS

Supporting families to arrange funerals with sensitivity, dignity and care.

- Flexible, caring approach, tailor-making funerals to suit your needs and budget.
- Open and transparent, affordable pricing.
- Free bereavement support sessions, open to all in our community, first Wednesday of the month, 10am - 12pm.
- Prepayment Funeral Plans available

For details of our services and prices, visit our website.



01579 362358 | www.fdhallfunerals.co.uk



Avalennek, Caradon Town,
Upton Cross, Liskeard
Cornwall PL14 5AR
Telephone 01579 363598
Mobile 07901 538132
chrisrounsevell@tiscali.co.uk

HOG ROAST EQUIPMENT HIRE AND MEAT SUPPLY

Hog Roasts For Those Special Occasions
Self Catering or Hassle Free Service
Everything done to your special requirements

CHRIS ROUNSEVELL
TRADITIONAL BUTCHER

Come and visit our recently updated
Tile & Bathroom showroom in PENSILVA

We offer a generous discount to all Pump Readers

Unit 24 Pensilva Ind Est, St Ive Road, Cornwall PL14 5RE 01579 362264



CORNWALL TILE
CENTRE

Pensilva Showroom

Open Mon - Fri 8.30am - 5pm
Saturday 9.00am - 1pm

Tiles & Mosaics for:

Bathrooms & Kitchens Living Areas Conservatories
Patios & External Areas Wet Rooms & Spas Swimming Pools
& All Commercial Applications

 atlas concorde

www.cornwalltile.com

OPEN FOR RETAIL, TRADE & COMMERCIAL ENQUIRIES



THE HOME OF WOOD

BULK DISCOUNTS AVAILABLE ON OUR 30 YEAR SERVICE LIFE POSTS



OUR GOLD TREATED STAKES AND POSTS ARE THE ONLY ONES AVAILABLE IN THE UK THAT ARE APPROVED BY THE WPA BENCHMARK FOR 30 YEAR SERVICE LIFE

For more information please contact one of our team



Bond Timber, Bake Sawmill, Trerulefoot, Saltash, Cornwall,

PL12 5BW

01503 240 308 stacy@whbond.co.uk

Pensilva Stores

Amazing Value

Premier
a great deal more from your local store
Mon-Sat. 7:00 AM. - 9:30 PM.
Sunday 8.00 AM. - 9:30 PM.

- ✓ Fantastic Special Offers every month!!! (See store leaflets)
- ✓ Come and Check out our great deals on Wine, Beer and Spirits
- ✓ Local Produce: Homemade Butter and Clotted Cream, Meat from our local butcher
- ✓ Cornish Fresh Fruit and Vegetables
- ✓ Fresh Bread, Pasties and Cakes
- ✓ Take Away Coffee, tea and hot chocolate
- ✓ Newspapers and Magazines, Greeting Cards
- ✓ Paypoint, Lottery

* **Free to use ATM** *
* **Card Payment** *

Friendly Staff + Service with a Smile !!!

Pensilva Stores is a family run business who have been serving local people and visitors for more than 21 years.

Higher Road, Pensilva, Liskeard, Cornwall PL14 5NQ

Tel: 01579 362547

MENDOLOGY

Garage Door Specialist

- Repairs
- Servicing
- Installations


Out of hours service
call Dave anytime 07974 442645

MENDOLOGY COMMERCIAL DOORS LTD
www.mendologydoors.co.uk

01579 363760

PensilvaCars

01579 363516

- ✓ MOTs Class 4
- ✓ Service
- ✓ Repair
- ✓ Tyres
- ✓ FREE Courtesy Car
- ✓ Car & Van Sales
- ✓ Diagnostics
- ✓ Air Conditioning
- ✓ 

We have offered a supply, fit & balance of tyre service for 10 years at competitive prices.

Most of our tyres can be supplied the same day.

LOCAL RECOVERY £45.00

www.pensilvacars.co.uk

pensilvacars@hotmail.co.uk

We can service and repair your car to manufacturer specification, keeping your dealer warranty without main dealer expense.





Pensilva & St Ive Post Office Service

Pensilva: Through the coffee shop on the 1st floor of Millennium House

Tuesdays: 9am to 1pm.

Wednesdays: 9am to 12 noon.

Fridays: 9am to 12 noon

**The Millennium House
coffee shop is also open on
these mornings.**

.....

St Ive: At St Ive Village Hall

Wednesdays: 10:30 to 11:30am

**Coincides with the St Ive
Village Hall Coffee Morning**

Saint Ive Parish tree-planting survey

Please let us know about any trees that you plant within the Parish. We will include them in our own survey and we will notify the Forest for Cornwall on your behalf, if appropriate.

email posicrp@gmail.com or message us on Facebook

www.facebook.com/posicrp or phone 01579 364016.

Pictures very welcome.

