

THE PARISH PUMP



August 2022
Edition 489



The Newsletter for the Parish of St Ives



Work day at St Ives Community Garden. Volunteers got stuck into constructing a composting area using recycled materials such as old pallets, scaffold boards - and parish councillors :)

Disclaimer

The articles appearing in this magazine do not necessarily reflect the views of the Parish Council nor of the Parish Pump Editor.

Parish Councillors Telephone List

Alan Moss (chair)	01579 362064	Marlene Carr (vice-chair)	01579 362919
James Bruce	07411 192645	Martin Corney	01579 382450
Sandra Doe	01579 363096	Rosemary Farley	01579 384810
Nigel Gisby	01579 363096	Tony Hodson	07973 536964
Nigel Libby	07968 891814	Paul Mann	01579 363757
Ivor Vaughan	07979 934604	Craig Vaughnley	01579 364083
Sharon Daw (Cornwall Councillor) 07837 379305 slash.dash.daw@gmail.com			

Meetings of St Ive Parish Council

Meetings are now being held on the 2nd Monday of the month except August and December when no meetings are held. Please see the Parish Council website for meeting dates, agendas and minutes.

<http://st-ive-parishcouncil.gov.uk/minutes-agendas/>



Devon & Cornwall Police
Building safer communities together

 **101**

Minicom 18001 101

Police Community Neighbourhood Office

Your Community Support Officer is PCSO Steve Edser 30173.

email: CIOSNBMLLST@devonandcornwall.pnn.police.uk

To report a crime call 101 or go to www.devon-cornwall.police.uk

In an emergency call 999

Contact details for St. Ive Parish Council and for Millennium House

Address for correspondence: Millennium House, Century Square, Pensilva PL14 5NF

General Parish matters should be raised initially with the Parish Clerk, Jenny Hoskin, who will present them to the Parish Council.

Telephone: 01579 363096, email: stiveparish@btconnect.com

For accounts matters for the Parish and for Millennium House contact John Body, Finance Officer: 01579 362102, email: millenniumhouseadmin@btconnect.com

Millennium House enquiries and reservations: 01579 363096

email: millenniumhouse@btconnect.com.

On the web: Millennium House Website: www.cornwallvenue.com

Parish website: st-ive-parishcouncil.gov.uk Facebook: facebook.com/stiveparishcouncil

PARISH PUMP ADVERTISING COSTS

The prices for advertising in the Parish Pump are as follows:

The below prices include VAT at 20%:

Quarter page: £10:00 per month or £100:00 for 12 months.

Half Page: £20:00 per month or £200:00 for 12 months.

Full Page: £33:00 per month or £330:00 for 12 months.

Parish Pump Information and Contact Details

To contact the editor please email: parishpump@btconnect.com
or phone the Parish office: **01579 363096**.

Hardcopy submissions by post or by hand to the Parish office, Millennium House, or Millennium House reception.

Softcopy submissions: By email to the editor in MS Word, MS Publisher, pdf, Tiff or jpeg. Please use A4 pages and minimum 16 point font as the Pump is initially produced in A4 size and reduced to an A5 booklet at the printing stage. If in doubt please contact the editor.

Bargain Corner free ads by email to the editor or drop off at the Parish Office.

Deadline for the Parish Pump is STRICTLY 15th of every month

From the Editor

The heat wave in July was a reminder that however hot it gets here, it is usually considerably hotter in other parts of the country. That is the upside of being stuck out into the Atlantic: though we get wilder, windier, rainier weather, the sea tends to regulate temperatures at the extremes. Frankly, I wouldn't swap the Cornwall climate for any other of which I have personal experience. Having said that, we all still need to keep an eye out for neighbours who may be vulnerable to high temperatures.

In the time that I've been editing the Parish Pump (and I'm pretty sure for a long time before that) the newsletter has always carried a full-page advert for Keith Richards' garage on the Pensilva industrial estate. That is, until this month, because Keith is retiring. I understand that the garage will continue, and no doubt we will hear about that in due course. Meanwhile, allow me to say, that Keith has been a great friend to the residents of Pensilva, of this parish and beyond, and I feel that he will continue to be so. Good luck, Keith, in your retirement.

Keep well everybody - Joe

St Ive Village Hall

Gardening Club	1st Monday monthly 7:30pm	01579 382762
St Ive Snooker Club	Monday & Thursday 7:00pm	01579 382315 R Bunkum
Yoga	Tues 4:30-6.00 & 7:00-8:30pm	07947 785554
Post Office	Wednesday 10:30 - 11:30 am	
Coffee Morning	Wednesday 10:30 - 12:00	
Art Group	Fridays 11:00am - 4:00pm	07772 639942
Social Evening	Fridays from 7:30pm	01579 384810 Rosemary

St Ive Village Hall is available for hire, £5.00 per hour. Includes use of the kitchen & electric (except wall heaters which are on a £1 coin meter). Ring Amanda Eveson on 01579 388782

Chairman's Report August 2022

Parish councillor Ron Greenhough has moved away from the parish and has resigned from the council. I would like to thank him, on behalf of all the parish, for his work during his time here. He will be missed.

The Chair of YMCA Plymouth has written to us to say that, with regret, they are unable to proceed with plans for the future management of Millennium House (first announced in the March 2022 Parish Pump). In the light of this decision, the Parish Council is considering other options for the future running of this very valuable community facility.

There are plans for a Youth Club to start up in Millennium House in September. Watch this space!

Alan Moss - Parish Chair.

Opening times for the Mel Bar at Millennium House

Tuesdays	5 -11 pm but only when the Function Room is in use.	
Thursdays	5pm -11 pm	
Fridays	5pm -11 pm	Last orders
Saturdays	5pm -11 pm	always half an
Sundays	12 noon - 5 pm	hour before
		closing.

ST. IVE VILLAGE SHOW

To be held on

SATURDAY 3rd SEPTEMBER 2022

In St Ive Village Hall

To be opened at 2:15 p.m.

Handicraft Classes

Cookery Classes

Horticultural Classes

Photography Classes

Various classes for children

Schedules will be available very soon.

All enquiries please to Rosemary Farley 01579 384810

CALLING ALL COUNTRY DANCERS AND CALLERS

Pensilva Country Dancing Club would like to start up again in September, and would welcome new members. We also need one or two more people who would be willing to take a turn at calling for the dances. We meet fortnightly in the Art Room at Millennium House, Pensilva for a couple of hours, usually on a Thursday evening, and would suggest 7.30 to 9.30pm. If you are interested in joining or calling would you please ring Carolyn on 01579 362698. We look forward to hearing from you.

Neighbourhood Development Plan - Martin Corney



Ron Greenhough, the councillor taking the lead on getting the parish Neighbourhood Development Plan (NDP) going again has unfortunately moved away and resigned from the parish council. So the parish council is looking for volunteers to join the NDP Working Group. You don't have to be a parish councillor, just interested in the future of the parish.

The NDP is very important because it primarily shapes the future of what gets built in our parish. Without an NDP there are very few limits to what gets built and where. Previously the working group met once a month, so commitment of your time is not burdensome.

If interested please contact me or the Parish Clerk in the usual ways.

South Hill Piecemakers are having an Open Day

on August 13th from 10am to 4pm at South Hill Parish Hall in Golberdon.

There will be a display of members' work, from cushions through to quilts. We are happy to teach beginners and inspire you to increase your knowledge on the different techniques used in our craft. Come and have a cup of tea and some cake, we would love to see you.

We meet each month on the 1st & 3rd Monday evening, 7.30-10pm, (except Bank Holidays) and 2nd & 4th Tuesday afternoon, 1.30-4pm, plus a regular full day one Saturday a month.

Contact Elaine 01579 383505 or elaineruthbrewer@hotmail.co.uk

Supporting Guiding & Scouting Activities in Pensilva

200 CLUB Draw Results for June 2022

1st No. 82 Mr T Marshall £75	2nd No. 80 Mrs B Bennett £50	3rd No. 171 Mrs K Restorick £20
---	---	--

Thank you for your support

PENSILVA WI JULY REPORT

Pensilva WI were looking forward to hearing about the manufacture of fudge, and of course trying some, but unfortunately Matt & Shelley from Roly's fudge were so busy keeping up with demand that they were unable to come and speak to us.

However, we were lucky that Carol Horsington, who was due to come to us in February, was able to step into the breach, and we had an enjoyable evening making hearts out of willow. Everybody had a go and there were some really lovely hearts created by the end of the evening. President Verna Dawe thanked Carol for giving us the chance to have a really crafty time.



[Picture: Alison's willow heart transplant.]

Birthdays this month were Barbara Bennett, Evelyn Dwelly, Jane Hall, Maureen Walker and Karan Fowler, who all received cards and posies.

Competition results: Flower of the month 1st Rosie Drake, 2nd Val Jones and 3rd Jenny Rendle. 'An interesting wooden item' 1st Rosie Drake, 2nd Sue Hill and 3rd Trish Thomas.

Pensilva Film Club

Firstly our apologies that last week's film "The Duke" had to be cancelled at short notice. This, as you have probably already heard via Pensilva bush telegraph, was due to an indispensable member of our team having contracted Covid. I am happy to report that all's well and there appear to be none of these horrid long-term side-effects.

As it stands our next regular film club night will be on August 26th (please note that this is the 4th Friday) when we were due to show Death On The Nile but I'm now making enquiries into whether or not we will be able to get Downton Abbey in time. We would also still like to show The Duke so I'm pleased to announce that we will now present that on FRIDAY 5 AUGUST as an extra showing. Our continued thanks to all our supporters –



Doors open at 7pm for a 7.30 start. The charge for C-film members is just £3 with £6 for new members which includes membership for one year. As usual the Mel Bar will be open both before and after the showing.

Pensilva Film Club - In association with C-film, part of Creative Kernow



PENSILVA
PRESCHOOL

GALA DAY

Millennium House

11am-4pm

SATURDAY

13th Aug

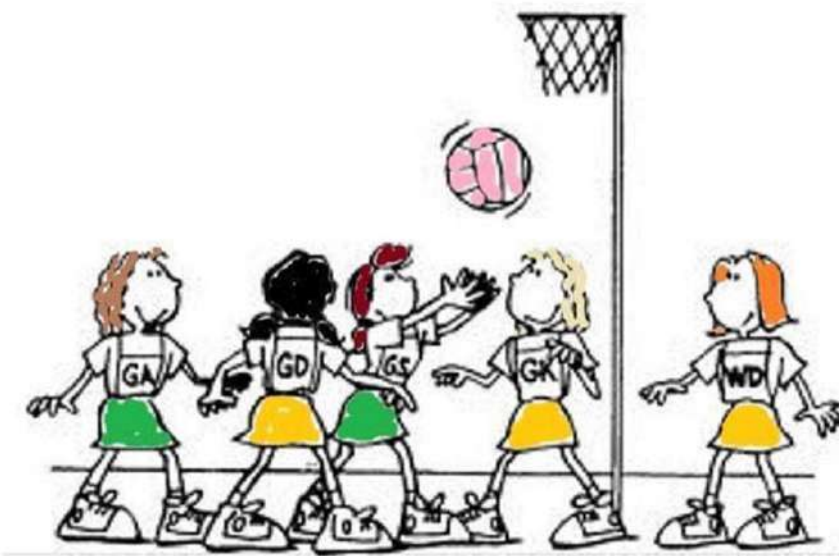
- RAFFLE • GAMES • HOT FOOD • ICE CREAM •
- DOG SHOW • TEDDY BEAR WORKSHOP
- PONY RIDES • INFLATABLES & LOTS MORE!



Ever tried...

Ladies Walking Netball?

Come along to Millennium House, Pensilva

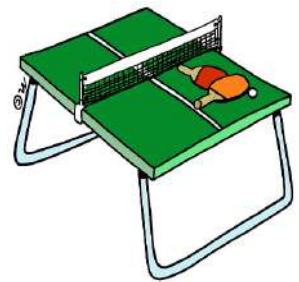


**Thursdays
4.00pm - 5.00pm**

£2 per session

**For further info contact rosemaryfarley@gmail.com
or Tel. No. 01579 384810**

ST. IVE COMMUNITY SOCIAL EVENING



**VILLAGE HALL
FRIDAY NIGHTS 7.30PM**

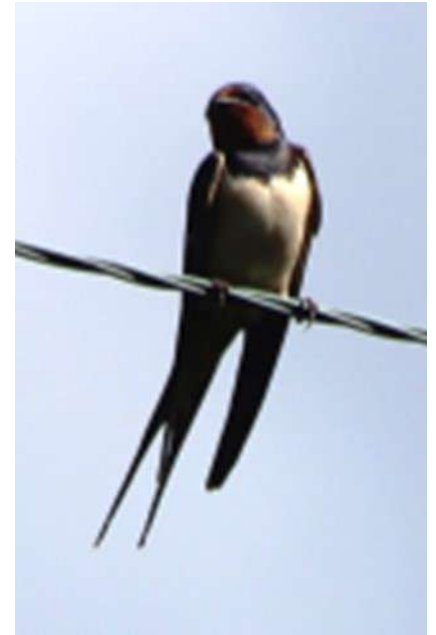
TWELVE YEARS OF WILDLIFE WATCHING IN THE PARISH OF ST. IVE

Since moving to the Parish at the end of 2009, I have been photographing and recording the wildlife which I see at my home on the edge of Pensilva on a daily basis. This month I'm looking at one of our best-known summer visitors...

THE SWALLOW



Swallows regularly appear in the spring, leaving again in September and October. It is a bird which I under-record, as it often flies high up and unless I get a good view, I am not confident in distinguishing the silhouette from those of swifts and martins.



The long, slender V-shaped tail is the easiest feature to confirm a sighting. Closer up, they have distinctive red throats, glossy dark blue backs and pale breasts.

They spend most of their time on the wing, catching a range of small invertebrates as they fly. They can often be seen swooping and feeding over meadows and water. You can tell by their height where most of the insects etc. are concentrated, by the height at which they are flying. Few predators are able to catch these agile and speedy fliers, though they are occasionally taken by sparrowhawks or hobbies. They are most vulnerable when nesting and will sometimes mob birds of prey, magpies, crows and even cats or people if they feel threatened.

Swallows are long distance migrants, spending the winter in sub-Saharan Africa. We were lucky enough to see this one in Kenya, where it is known as a barn swallow. They have a number of different swallow species there and the name is a nod to its favourite nesting places in their winter homes. You couldn't help marvelling at the journey they had made under their own muscle power!

Migrating swallows fly mainly through the daytime, at speeds of 17 to 22 mph. Their top speed is 35 mph. They keep to low altitudes, feeding as they go. Prior to leaving they will fatten up a bit, but even so, many will die of starvation, exhaustion or when caught in a storm.



Although a common and widespread bird in the UK, their populations have fluctuated in the past 30 years with declines across Europe. There are thought to be a number of contributory reasons for this:-

- Swallows need moderate weather with some rain for the mud to build their nests. Weather which is too wet or too dry will reduce the available insects with which to feed their young. Climate change is producing more extreme weather patterns with late frosts or unseasonable heat which may lead to higher chick mortality. Resulting lower insect levels will also impact on the birds' conditions as they depart for Africa.
- Extreme weather events on their migration routes may cause fatalities, but research also shows that birds are arriving at their breeding grounds in a poorer condition and so laying fewer eggs.
- Changes in farming practices in Europe, and particularly the reduction in grazing pastures which attract insects, may also have an impact.



In September and October, look out for groups of swallows like these gathering on wires around the parish as they get ready for their epic journey to Africa. These birds with their shorter tails, less bright throats and still slightly fluffy feathers were probably juveniles

getting ready to make their first migration. I wonder if they made it?

We wish this year's broods and their parents all the best for this long and arduous journey and hope they return to Cornwall next year to herald the start of another summer.

Bon Voyage!



St Ive & District Gardening Club Report - July 2022

On Monday 4th July we visited Gardens Cottage at Prideaux, near St Blazey. The evening started like every other visit; met in the car park, set off, all going well until the Dobwalls by-pass where traffic was at a standstill. This was our 3rd attempt at this visit: was it just not meant to be!? After 15/20 minutes, with delight, we started moving again. We arrived & gathered in a stone seating area by the house surrounded by plants & flowers. Roger and his wife Sue told us their story. Prior to owning Gardens Cottage, they lived in the Cotswolds. Sue worked as an acupuncturist & was an extremely keen gardener. One day Sue announced her wish to swap it around; more time as a gardener, less as an acupuncturist. Roger & Sue set about finding the place for her wish to come true. In 2014, after whittling down the options, they set their heart on Gardens Cottage. Roger explained how there was a cottage (a former B&B) but there wasn't much in the way of a garden, it was more mature trees & lawn. For Sue this was ideal, a blank canvas. Looking around the garden now, you would think it had been designed, but that is not so: the garden worked itself out. The only musts were the orchard & a room for Sue's acupuncture business - with a view of flowers! Being Cornwall there were a lot of granites, which in some cases became features as they were impossible to move! Sue then gave us details about the garden to ensure we didn't miss anything. She declared her love for self-seeders. They are easy, just leave alone & let them do what they do best; they fill gaps & give beautiful flowers. The orchard at the end of the garden was the first area to be planted. Then a formal garden: no self-seeders are allowed there and it's a weed free zone too. As Sue talked I was aware of the loud hum of bees; a wonderful sound on a summers evening. This was soon explained: there is a bee area with hives nestled in the garden by the woodland. The garden also has a woodland area complete with gypsy caravan, wood store & a caravan - Roger & the dog's territory! As we adventured around the garden the words spoken came to life. Flowers of various colours which you might not think would look good together but they do: orange, pink, purple each holding their own & complementing each other. Walking across the lawn, one of the mature trees provides a shaded, rustic area, to which Sue has added a seating area with wood chips, ferns & a model of an engine house. The formal garden came into sight, through a carefully cut hedge, a round arrangement with arches each holding different climbing flowers & one with an apple tree. Walking around the orchard we saw areas of uncut lawn, wild grasses growing well, a heaven for insects. Behind the summerhouse are the beehives, we had to be quiet as it was bedtime for the bees. The woodland of mature trees sectioned with old branches to make pathways, simple but extremely effective. The sun was setting as we walked up to the gypsy caravan, the sun shining through the exquisite colourful stained glass window – what a sight! Beautiful, colourful, authentic, there are so many words that could be used but none would do it justice. A perfect addition to the woodland. Roger's caravan sits on the exit/entrance of the woodland overlooking the start of the garden & the lawn area. A relaxing place to enjoy the peaceful woodland & view the immaculate lawn. Behind the house, the view changed again. Greenhouses & raised beds for the kitchen garden: lettuce, squash, tomatoes, sweet peas, cucumbers, cabbage & many more! This garden had a bit of everything. What struck me the most was the naturalness had been mixed perfectly with additions to enhance the area. Whatever mood you're in the garden has a place for you.

Next visit (& last outdoor visit of the year) Monday 1st August. Gardens at Dove Cottage & 9 Higman Close, Dobwalls. Meet at St Ive car park to leave at 6:30pm
Entry £6 including refreshments.

You are very welcome to join us, you will not be disappointed.

MILLENNIUM HOUSE

COMMUNITY CENTRE, AND DYNAMIC EVENT
VENUE IN THE HEART OF EAST CORNWALL



Conferencing

We have four meeting rooms for all your corporate needs.



Function Room

For parties, discos, or just larger events; with adjoining kitchen and bar.

Our Facilities

Sports Hall

For sports or larger events requiring a stage, the sports hall is our biggest venue.



Coffee Shop

Providing tea, coffee and cake. And for something stronger, there's the Mel, a licensed bar.



Enquire today:
01579 363096

www.millenniumhouse.org.uk
PRINCESS ROAD, PENSILVA, PL14 5NF

What Do We Do?

From wedding to wakes, kids or adults, corporate or community, we can host and cater your event. If you have an idea that's not covered here, get in touch and see if we're the right venue for you.

We're also home to:

- ✓ The Mel bar
- ✓ All Being Well Fitness Centre
- ✓ Post Office
- ✓ Sunflower Park kids playground
- ✓ Extensive playing fields
- ✓ Community Library

Millennium House Community Transport

Do you need transport to and from the doctor or hospital?

Millennium House Community Transport's aim is to connect local communities and reduce social isolation.



If you need transport to Hospital, doctors or vaccination and have mobility issues, or are unable to drive to your appointment, please contact Millennium House on:

01579 362919 or 01579 363096 and we will try to help.

To volunteer as a driver please call Millennium House on **01579 363096**.

CITIZENS ADVICE CORNWALL - APPEAL FOR VOLUNTEERS.

Citizens Advice Cornwall is appealing for people to come forward as volunteers, to not only help with providing advice and support, but to also help with fundraising and raising awareness.

Like many charities, Citizens Advice Cornwall relies heavily on volunteers to be able to continue its work. As the cost of living and energy crisis deepens, the demand for the charities services across the county is increasing.

Fundraising Ambassadors are needed for a variety of roles including organising and attending fundraising events, talking to groups and organisations, organising collection tins etc. We also need volunteer advisors and administrators.

Last year, Citizens Advice Cornwall helped more than 9,000 people, with almost 40,000 issues, write-off debt worth a total of over £1 million and gain income worth more than £8.1 million.

It costs Citizens Advice Cornwall around £1.5m to run the service each year, a figure that is set to rise as the need for help increases.

Citizens Advice Cornwall provides free, independent, confidential advice on a range of subjects for everyone, including benefits, debt, housing, relationship issues, employment and redundancy, consumer, legal issues and more.

To find out more please email tamsin@citizensadvicecornwall.org.uk

Millennium House Coffee Shop Opening Hours

We are open Tuesdays, Wednesdays and Fridays, 9am to 1pm
(to coincide with Post Office days).

Our intention is to open more days and for more hours as soon as Covid regulations allow.

Covid precautions are in place at all times, providing a safe environment for our customers.

All Being Well

We are still open for three mornings a week. A maximum of six members can now attend at one time.

Opening hours:

Monday, Wednesday and Saturday, 9am to 1pm.

Maximum six members at a time for each of three slots within each session: 9:00 to 10:20, 10:20 to 11:40 and 11:40 to 13:00

Prior booking is essential

To book yourself in or for any enquiries, call in at the gym or telephone on **01579 363890**, during the opening hours listed above.

22 years working in our local community to improve health, fitness and well being.

Badminton has restarted at Millennium House

Come and join our relaxed and friendly group.

Mon & Tue 7:30 - 9:30pm

For further info phone Nigel or Carol on 01579 363594 or 07885 798370



Tamar Area Prostate Support (TAPS)



DON'T IGNORE THE SIGNS

- A need to urinate frequently especially at night
- Difficulty in starting to pee
- Weak flow
- Feeling that your bladder has not emptied fully

If you would like to know more about us please contact one of the steering group listed below or email tapsinfo555@gmail.com

**Come and join us on the first Tuesday of the Month
10.00 at the Compton Park Engine House Callington
for a friendly chat and a coffee.**



Paul Mansell 01822 832179 - Harry Lawson 01579 383258

John Stewart 01822 833343 - Stephen Williams 07735 389883

Albert Doidge - 01822 832471

**Prostate Cancer UK is a registered charity in England and Wales (1005541)
and in Scotland (SC039332). Registered company 02653887.**

PENSILVA VILLAGE HALL

We are now open and back in business!

Anyone wishing to book the hall for meetings, birthday parties or fundraisers, please contact Peter or Jackie Browning on **01579 363212** or email **peterpensilva@gmail.com**

Please note that as well as hall rent there is a coin meter for



MOBILE LIBRARY



The County Mobile Library visits our area every four weeks, always on a Friday. You can now browse the shelves again, but you can still pre-order books if you prefer.

Next visits: **Aug 26, Sep 23, Oct 21, Nov 18, Dec 16.**

Stops at The Victoria Inn, Pensilva from 10.25 to 10.45am; and Quethiock bus stop from 11.00 to 11.20am.



Struggling with Sight Loss?

iSight Cornwall offers practical help to people living with sight loss in Cornwall including:

Low Vision: Advice for low vision aids

Assistive Technology: Advice on products

Benefits Advice: Assistance to claim entitlements

Equipment Demonstration: Advice on gadgets

Social Clubs & Activities: Links to clubs & activities in the county

For more details Telephone 01872 261110 or visit

www.isightcornwall.org.uk

CALLINGTON TOWN

MARKET

7th August 2022

Come and Support Your Local Traders

10.00am until 2.00pm

Pitches start from only £10 each!

Pannier Market, Callington

Car parking is **FREE** in all car parks on Sundays

Access to the market can be gained from Fore Street (between Spar and John Smith's Tyres) or through the Town Hall

For more information, or if you are a trader wanting to book a pitch, please call 01579 384039

or email market@callington-tc.gov.uk

Future 2022 Markets held on - 4th Sept, 2nd Oct, 6th Nov, 4th Dec

AFTERNOON TEA

*St John's Church
Pensilva*

*Friday 12th August
3.00 to 5.00 pm*



Bring & Buy Stall

*Donations in aid of
church funds*

Good Grief Cafe

There is no right or wrong way to grieve. We aim to bring the bereaved community together, with time to share experiences and to bring comfort to one another in what can be an isolating and lonely time. There is no agenda, just tea, cake, chat and friendship. All are welcome, and please use this as an opportunity to invite someone.



St John's Church

Wednesday 17th August 3.00 to 5.00 pm

Contact Geoff on 01579 362698

Pensilva



If you have memory problems
or
you are a carer
for somebody
who does
and
would like to
meet others
who understand
your situation
then join us at
St John's Church

MemoryCafé

Thursday 25th August
2.00 to 4.00 pm

Contact Geoff 01579 362698

A large thought bubble graphic with a black outline. Inside the bubble, there are three images: a wooden cross against a blue sky, an open book with light rays emanating from it, and two hands holding a glowing light. To the right of the images, the text 'FOOD for THOUGHT' is written in a stylized font, with musical notes and a treble clef floating around it.

FOOD for THOUGHT

SUNDAY
28th
August
5.00 PM

St John's Church
Pensilva
A time of fellowship
and informal worship
with a shared afternoon tea

A photograph showing a round chocolate cake on a white plate and a tray of various sandwiches on a blue tray.

For further information
& to arrange transport:
Geoff 01579 362698

knit and natter

Do you enjoy stitching, knitting, crocheting?

Join our friendly knit and natter group. Come and meet new friends and swap tips and ideas – all ages and abilities welcome!

Drop-in!

There is no charge for this activity but there is a Donation Box if you would like to make a cash contribution

**Tuesday
30th
August**

**St John's
Church
Pensilva
on the
last Tuesday
of the month**

**2.00
to
4.00 pm**

**Contact Kathleen
01579 363686**

An evening with...

**JOHNNY
COWLING**

**Ticket only event
£15.00 including
Pasty Supper**

**Eliot House, Liskeard
Friday 30th Sept. 2022
at 7:30pm**

Supporting
children's hospice
SOUTH WEST

Registered Charity No. 1003314

Contact Pat On 01579 362959 or 07436 438567

St Ive Methodist Chapel

Services for August 2022

Sun 7th August	10.30 am	United Circuit Service at St Germans for Rev. Iris Bray's farewell.
Sun 14th August	3 pm	Mr Geoff Williams
Sun 21st August	11.15am 6pm	United Service at St Ive Church United Greenshoots Service at Blunts with Prof. Noel Morgan.
Sun 28th August	3 pm	Keth Mutton

ST JOHN'S CHURCH, PENSILVA

A united congregation of the Church of England & the Methodist Church

Services for August 2022

Sunday 7th 11.00 am Mr David Wenmoth

Sunday 14th 11.00 am Café Church Geoff Cox & Carol Morse

Sunday 21st 11.00 am Rev Martin Sellix

United Parish Holy Communion, St Johns with St Ive

Sunday 28th 10.00 am United Circuit Service at Connon Methodist Church

5.00 pm Food for Thought

Thursdays 10.00 am Morning Prayer Fellowship

AUGUST EVENTS Please see posters on other pages for full details

Friday 12th 3.00 - 5.00 pm Afternoon Tea

Wednesday 17th 3.00 - 5.00 pm Good Grief Café

Thursday 25th 2.00 - 4.00 pm Memory Café

Tuesday 30th 2.00 - 4.00 pm Knit & Natter

For further details of the services and events at St John's, or if you know of any illness or need in the village, please call Geoff, 362698 or Frances, 363718

Bargain Corner Free Ads up to £50

Ads are free for items up to £50. £5 charge for items over £50. Please leave a note at Millennium House reception, ring the Parish Office on **01579 363096**, or email **parishpump@btconnect.com**.

***** Please let us know when your item has sold *****

Car roof box. Opens both sides. Only used once. Full instr's. L 2300mm W 820mm H 360mm. **£50. 01579 362217.**

"OASE" Pond Pump. Filtral UVC 9000 multi-function under-water filter. **£25 ono. 01579 363626.**

Axminster 2 speed forward and reverse **drill**, in GWO **£10** and a **Power Planer PPL800** - 800W in GWO requires a new blade **£10** or **£15** for the two items.

2 Empty Dewalt Tool Cases, 1 general tool box with free Dewalt cordless drill no battery. **£30.**

10 wooden **moulding planes** Usable cond. 1 wooden spirit level & scribe. **£50.**

Small **boat anchor** 19" h x 13" w. **£15.**

Six coils of **industrial steel cable** now surplus to requirements **£35** the lot.

01579 384658 (Safe Distancing if reqd.)

Zanussi **Washing Machine.** Load 6kg, Spin 1200. Little used, good working order. Buyer collects (Pensilva), Bargain at **£35. 01579 363281.**

3-piece cane suite. 2-seat settee & two single chairs. Ideal for conservatory / lounge. Washable cover. Fire resistant. In good condition. **£50** the set.
01579 362819.

Andrew James 3 litre **deep fryer**, never used and in VG cond. **£20.**

Bosch Tassimo **coffee machine** used but in VG cond, Plus coffee, tea & creamer pods. **£15.**
07561 559488 - Buyer collects (Pensilva)

Single bed & headboard. Never used. St. Ive area. **£15 ono. 07522 484979.**

Ladies Superdry Jacket. Size Med. Good condition. **£15. 01579 346982.**

Black Beko **fridge freezer** with water dispenser, excellent condition no damages etc. **£50.**

Motorbike jacket (ladies) Raven, black with pink details on it, size 12. VGC no damage or tears etc. **£20.**

Ladies Rocketdog wedge **flipflops** black with red and mixed colour beads on material, size 5. still in box as new paid **£10.**

Upton Cross/Minions area
07368 528398.

Canon IP2700 **Printer. £20**
Computer screen 19" £20.
Epson Perfection v350 **Scanner Photo £20**
Sony Revia 42" **TV. £45.**
All in working order. **01579 363200**

Set of 3 **suitcases**, red, vgc, Antler, **£40 ono. 07770 747353.** Pensilva area

Colin Swinburne
Electrical Services



All aspects of domestic and commercial electrical work.

Inspection and testing (EICRs), fault finding, new installations, rewires, consumer unit replacement, additional sockets, lighting upgrades, garden power and lighting, extractor fans and more.

Electrician in Pensilva. Free advice and quotes.



CSES@btinternet.com 07974499138



ADVERTISE HERE!

This box for **just £20 per month** incl. VAT (£16.67 Net)

2 MONTHS FREE for a 12 month order.

i.e. **£16.67 per month** incl VAT for 12 months (£13.89 net)

See the full tariff on page 3

One thousand copies per month distributed free of charge to households in the Parish of St Ive.

Trystan Phillips



Carpentry/Joinery & Property Maintenance



35 Years' Experience

Fully Insured Including Public and Product Liability

All aspects of Carpentry undertaken including:

Bespoke Carpentry & Joinery , Kitchen Installations, Doors, Partitions, Skirtings, Architraves, Shelving, Timber Floors renewed & repaired, Laminate Floors fitted, Timber Windows repaired including 'Sliding Sash'. Plus General Property Maintenance, including Painting/Tiling & much more!

07397 153792 trystanphillipscarpentry@gmail.com 01579 363150

Debbie's Care Services

Tel. 0777 948 3230

Hello, my name is Debbie. I am a local lady who has been working in the community for over 30 years.

I provide the following services and more!

- Assisting bathing / showering
- Preparation of meals
- Cleaning / Shopping / Ironing
- Companionship / Friendship and emotional support
- Assisting with mobility
- Day, Evening and Night Care

MUST STEP

PODIATRY

**HCPC Registered
podiatrist**

Fully insured

NHS experience

Kind and caring

Home visits

All your footcare needs

Most areas covered

Tel: 07522 577012 or

07561 608296

New, High-Quality, Local Decorating Service

EDEN SERVICES

Mobile

07775 515036



Office

01579 641129

Interior and exterior decorating, including spraying
All work fully insured and guaranteed - References available

High quality work at sensible prices

Over 25 years experience

Call Julian for a free, no obligation quote



R J Gardening & Handyman Services

All aspects of gardening and handyman work undertaken.

- ~Local and Trustworthy
- ~Hard Working
- ~Reliable and Experienced
- ~No job too small
- ~Competitive rates

Contact Raymond on:

07541 229064 or 01579 347622

raymond_pearcegb@yahoo.com

Find us on Facebook

Find us online:
fresh_prop.co.uk



Top quality carpet, upholstery & hard floor
cleaning services based in Callington

Long-established cleaning professional

Domestic & commercial

NCCA qualified & member

Steam cleaning & dry carpet cleaning

Tile & grout + natural stone clean & seal

Vinyl & LVT including Amtico & Karndean

Call 0800 3893393 or 07905 188459

Or email nevil_fresh@msn.com

TRADITIONAL STONE SERVICES

CLASSIC & TIMELESS
STONE MASONRY
AND LETTERING

MEMORIAL CLEANING

COMMISSIONS TAKEN

01579 363693

OR

07507 782282



Domestic Electrical
Property Maintenance
Interior & Exterior Work
Carpentry :: Decking
Kitchens :: Bathrooms
Wall & Floor Tiling
General Plumbing

MCCARTHY PROPERTY MAINTENANCE

**Electrical Safety
Register**

incorporating
ELECTSA + ECA
Certification Ltd

HIGHLY REGARDED LOCAL BUILDER
COMPETITIVELY PRICED
COVERING THE SOUTH WEST

Contact Dominic

07968 599 675

01579 362 945

info@mccarthypropertymaintenance.co.uk

www.mccarthypropertymaintenance.co.uk



Maintaining and preserving our
countryside for the benefit of all

Dry Stone Walls

Cobblestoning

Stone faced walls

Hedgelaying/steeping

Land management

All aspects of Landscaping

Mobile: 07539 296799 or

Email: info@just-in-stone.co.uk

Naomi's Footcare Service

I provide a personal toenail-cutting service within the comfort of your own home.

To include removal of calluses, corns, hard skin, and reduction in thickening nails.

- ✓ Trained foot health practitioner.
- ✓ Fully insured
- ✓ DBS checked.

naomiturner84@gmail.com

07809 690385

Debbie Hicks - Counselling and Psychotherapy

Caring, confidential counselling for all.

I work in a therapeutic relationship to help you understand yourself better.

I offer a warm, approachable, relaxed environment for you to untangle your thoughts and emotions.

www.debbiehickscounselling.co.uk

Email: debbiehicks10@gmail.com

07851 133782

More info on my website or by contacting me.



JP'S FRESH HOT FOODS

HOMECOOKED SPECIALS AND DESSERTS

INCLUDING REGULAR TAKEAWAY MENU

THURSDAYS - 4PM - 7PM, EAST TAPHOUSE HALL CAR PARK

FRIDAYS - 4:30PM - 7:30PM, PRINCESS ROAD PENSILVA

LOCAL FOODS FRESHLY COOKED

CASH OR CARD ACCEPTED - PRE-ORDERS WELCOME

TEL. 07966 994585



JP'S FRESH HOT FOODS

EVENTS TAILOR-MADE AND CATERED FOR WEDDINGS, BIRTHDAYS AND ANY CELEBRATIONS.

PLEASE CALL FOR ANY FURTHER INFORMATION.

Westwood Garden Maintenance



Antony Watts

Grass Cutting, Clearance

Weeding, Turfing

Hedge Cutting

Patio Cleaning, Planting

Regular Visits / One-off Contracts

Residential & Commercial

FREE ESTIMATES

01579 362019 www.westwoodgm.co.uk 07952 094472

JPH Plastering and Rendering

Internal plastering

Internal and external rendering

Internal/external painting & decorating

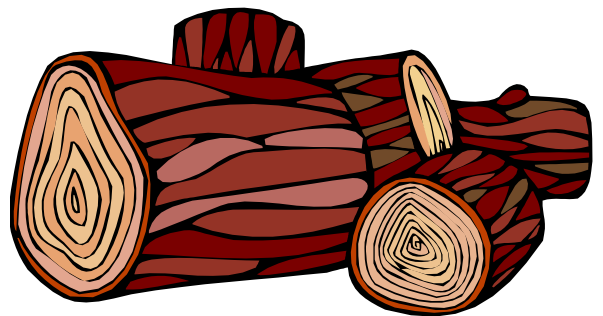
Property maintenance

Landscaping and land management

For estimates and no obligation quotes
contact Justin on:

07539 296799 or
info@just-in-stone.co.uk

SEASONED LOGS



MIXED LOAD

or

HARDWOOD

Tel. Jonathan

Mobile 07966 070725

or

01579 363157

PENROSS

Rosecraddock Lodge Holiday Bungalows

(Between Pensilva & Liskeard)

Perfect for family & friends coming to visit!



Sleeps 4

Sorry no pets or smoking

Tel: Julie 01579 362221

Email: penhargetfarm@gmail.com

NICOLA GREENE

BSc (hons) Podiatry MChs

HPC Registered Chiropodist/Podiatrist

**Home Visit Practice treating all
your foot care needs:**

- Nail Cutting
- Corns and Calluses
- Thickened Nails
- Dry Cracked Skin
- Verrucae
- Foot Pain
- Diabetic Foot Assessments
- Wound Care

T: 01579 590027

M: 07786164205

E: nicki_greene@yahoo.com

Matt's Windows

**Repair of Windows, Doors
& Glass Unit Replacement**

T: 01579 641228

M: 07533 387368



KV Accounting Solutions

ACCA

Local Accountant offering fixed fee accounting services

With over 20 years experience, I am a fully qualified, friendly, local accountant

- | | |
|---|--|
| ✓ Annual Accounts for Sole Traders and Partnerships | ✓ Self Assessment tax returns |
| ✓ Book Keeping & Payroll | ✓ iXBRL tax filing |
| ✓ Personal Tax Planning | ✓ Tax investigation Fees Insurance |
| ✓ Company Accounts | ✓ Company Secretarial work |
| ✓ Business Support & Advice | ✓ Tax calculations for Sole Traders and Partnerships |

Kate Vaughnley FCCA - Chartered Certified Accountant

Website : www.kvaccountingsolutions.co.uk or Email : katevaughnley@gmail.com
Telephone : 01579 364083



**NATURAL GAS - LPG - OIL
BOILER INSTALLATION**

BOILER SERVICE & REPAIR

LONG WARRANTY FREE QUOTES

07859848288

bagasservices@outlook.com

533335

**GAS
safe
REGISTER**



Affordable Counselling

Caring, confidential,
non-judgemental

- Increased confidence and self esteem
- Help to cope better at difficult times
- Improved relationships
- Clarify confused thoughts & feelings
- Assertiveness
- Personal insight
- Improved emotional health
- Available for youth and adults

Isabelle McGarahan BA, PGCE
Dip in Therapeutic Counselling,
Accredited ACC, DBS cleared
www.im-counselling.org email:
isabelle@im-counselling.org
01579 344090/07857326229



P BRADLEY PLUMBING & HEATING

Email: info@pbplumbingheating.co.uk

Web: www.pbplumbingheating.co.uk

Facebook: @PBradleyPlumbingandHeating

NO JOB TOO BIG OR SMALL

24hr Emergency Call Out

Based in Liskeard

Call Today 07598956760

***"The complete bathroom
installation service"***

**New bathrooms fitted,
floor and wall tiling specialist**

General Plumbing including:

- Bathroom makeovers
- Dripping taps and burst pipes
- Pump and cylinder changes
- Radiator upgrades and additions
- Specialist in Leadwork
- No job too small
- No Call out charge



W. Hale
Plumbing

Friendly Service, Quality Work

NO VAT

**City and Guilds Qualified
established 1983**

Call William Hale on

Tel: 01579 362132 Mobile: 07826 699719



Kiln Dried Firewood
Kindling & Firelighters
Eco Heatlogs
LPG Bottled Gas
Patio, BBQ & Camping Gas
Coal & Smokeless Fuel



0800 8021 223
sales@loganslogs.co.uk
www.loganslogs.co.uk

Heel 2 Toe Footcare

Tired Aching feet.

Corns, Hard skin, Verruca.
Fungal infected toe nails, or
toe nails require cutting.

Diabetic feet also treated and
regularly checked.

I can help to keep your feet
looking and feeling good.

I am a trained Foot Health
Practitioner to Diploma Level, fully
insured & DBS checked.

I can do home visits via an
appointment.

Call Penny: **07746 926146** for
further information. **Please note
new number May 2021.**

MARK FITCH CHIMNEY SWEEP

- * BRUSH & VACUUM
- * CLEAN, RELIABLE SERVICE
- * COVERING ALL S.E. CORNWALL
- * DISCOUNT FOR MULTIPLE CHIMNEYS
- * COWLS & GUARDS FITTED
- * STOVES SERVICED



*Call
Mark on:*

01579 350762
07773 462643





Fencing
 Paths & Steps
 Turf & Astro turf
 Driveways
 Retaining walls
 Digger work
 Footings & foundations

Patios
 Rendering
 Decking

And more

Free no obligation quotes

Call Rob on:

**07518246666 or
 01579 641802**

Window Cleaner
 Window Cleaner

Also any upvc cleaned

i.e. fascias, gutters, etc.

gutters cleared & unblocked

Please phone Rob

07709 053464

Window Cleaner
 Window Cleaner

Save Costly Energy!



SOLARTEC Windows & Conservatories Ltd

**'A' Rated WINDOWS & DOORS
 at BEST PRICES EVER!**



Professionally fitted and finished by us with a
 10 year ins. guarantee.
 In all colours



NEW

**FACTORY SHOP
 SUPPLY ONLY**

For all your windows, doors, conservatories,
 fascia, trims, guttering and sealants

**7-10 DAY TURN AROUND ON WINDOWS,
 DOORS and CONSERVATORIES**

TEL: 01579 343425

FAX: 01579 344500

WEBSITE: www.solartecwindows.co.uk

EMAIL: sales@solartecwindows.co.uk

KEEPING JOBS IN CORNWALL

PMB Book Keeping

Friendly Book Keeping Services:

Purchase and Sales Ledger

Bank Reconciliations

VAT returns - Making Tax Digital

Self Assessment Tax Returns

And More

Fully Qualified, Insured and
 Licenced

T: 01579 683624

E: pmboutsourcing@outlook.com



Group Travel

Day Trips & Coach Holidays

Enterprise Park, Midway Road, Bodmin, Cornwall PL31 2FQ Tel: 01208 77989

Coach Excursions & Tours 2022

6th August	Taunton Flower Show
7th August	Magic Millions Festival of Eventing
27th - 28th August	Great Dorset Steam Fair
2nd - 4th September	Burghley Horse Trials
13th September	Widcombe Fair
17th- 21st September	Llandudno, North Wales
8th October	Horse of the Year Show, Birmingham
12th October	Goosey Fair, Tavistock
5th November	Bridgwater Carnival
12th November	Longleat Festival of Light
25th - 28th Nov	Turkey & Tinsel - Torquay
3rd December	Bath Christmas Market
10th December	Exeter Christmas Market
18th December	Cornish Christmas Lights
18th December	London International Horse Show

Bodmin MOT Centre

01208 77989

Garage Services
 MOT Testing Station
 Classes 4, 5 & 7
 Servicing & Repairs
 High Vehicles & Motorhomes
 Brake Test & Headlight Alignment
 Pre MOT Inspections
 Annual & Interim Vehicle Servicing

Commercial interim inspections available including brakes and lights

Helping you stay compliant

**Bodmin MOT Centre
 at Group Travel**
 Enterprise Park, Midway Road,
 Bodmin, Cornwall PL31 2FQ

Call: 01208 77989 for bookings and brochure
 website: www.grouptravelcoachhire.co.uk

Martin Hoare – Local, Reliable, Competitive



WHEEL DIGGER FOR HIRE
 ALSO AVAILABE 'BREAKER'
 AND NEW CONCRETE
 'CRUSHER BUCKET'

ALL AT COMPETITIVE RATES

GROUND WORKS
 DRAINAGE
 NEW DRIVEWAYS
 SEPTIC TANKS &
 'SOAK AWAYS' INSTALLED



LASER LEVEL FOR HIRE
 QUOTES AVAILABLE



Phone 01579 363517

or

Mob 07863 291213



INDEPENDENT FAMILY FUNERAL DIRECTORS

Supporting families to arrange funerals with sensitivity, dignity and care.

- Flexible, caring approach, tailor-making funerals to suit your needs and budget.
- Open and transparent, affordable pricing.
- Free bereavement support sessions, open to all in our community, first Wednesday of the month, 10am - 12pm.
- Prepayment Funeral Plans available

For details of our services and prices, visit our website.



01579 362358 | www.fdhallfunerals.co.uk



Avalennek, Caradon Town,
Upton Cross, Liskeard
Cornwall PL14 5AR
Telephone 01579 363598
Mobile 07901 538132
chrisrounsevell@tiscali.co.uk

HOG ROAST EQUIPMENT HIRE AND MEAT SUPPLY

Hog Roasts For Those Special Occasions
Self Catering or Hassle Free Service
Everything done to your special requirements

CHRIS ROUNSEVELL
TRADITIONAL BUTCHER

Come and visit our recently updated
Tile & Bathroom showroom in PENSILVA

We offer a generous discount to all Pump Readers

Unit 24 Pensilva Ind Est, St Ive Road, Cornwall PL14 5RE 01579 362264



CORNWALL TILE
CENTRE

Pensilva Showroom

Open Mon - Fri 8.30am - 5pm
Saturday 9.00am - 1pm

Tiles & Mosaics for:

Bathrooms & Kitchens Living Areas Conservatories
Patios & External Areas Wet Rooms & Spas Swimming Pools
& All Commercial Applications

 atlas concorde

www.cornwalltile.com

OPEN FOR RETAIL, TRADE & COMMERCIAL ENQUIRIES



THE HOME OF WOOD

BULK DISCOUNTS AVAILABLE ON OUR 30 YEAR SERVICE LIFE POSTS



OUR GOLD TREATED STAKES AND POSTS ARE THE ONLY ONES AVAILABLE IN THE UK THAT ARE APPROVED BY THE WPA BENCHMARK FOR 30 YEAR SERVICE LIFE

For more information please contact one of our team



Bond Timber, Bake Sawmill, Trerulefoot, Saltash, Cornwall,

PL12 5BW

01503 240 308 stacy@whbond.co.uk

Pensilva Stores

Amazing Value

Premier
a great deal more from your local store
Mon-Sat. 7:00 AM. - 9:30 PM.
Sunday 8.00 AM. - 9:30 PM.

- ✓ Fantastic Special Offers every month!!! (See store leaflets)
- ✓ Come and Check out our great deals on Wine, Beer and Spirits
- ✓ Local Produce: Homemade Butter and Clotted Cream, Meat from our local butcher
- ✓ Cornish Fresh Fruit and Vegetables
- ✓ Fresh Bread, Pasties and Cakes
- ✓ Take Away Coffee, tea and hot chocolate
- ✓ Newspapers and Magazines, Greeting Cards
- ✓ Paypoint, Lottery

* **Free to use ATM** *

* **Card Payment** *

Friendly Staff + Service with a Smile !!!

Pensilva Stores is a family run business who have been serving local people and visitors for more than 21 years.

Higher Road, Pensilva, Liskeard, Cornwall PL14 5NQ

Tel: 01579 362547

MENDOLOGY

Garage Door Specialist

- Repairs
- Servicing
- Installations


Out of hours service
call Dave anytime 07974 442645

MENDOLOGY COMMERCIAL DOORS LTD
www.mendologydoors.co.uk

01579 363760

PensilvaCars

01579 363516

- ✓ MOTs Class 4
- ✓ Service
- ✓ Repair
- ✓ Tyres
- ✓ FREE Courtesy Car
- ✓ Car & Van Sales
- ✓ Diagnostics
- ✓ Air Conditioning
- ✓ 

We have offered a supply, fit & balance of tyre service for 10 years at competitive prices.

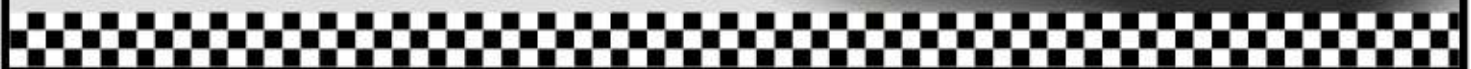
Most of our tyres can be supplied the same day.

LOCAL RECOVERY £45.00

www.pensilvacars.co.uk

pensilvacars@hotmail.co.uk

We can service and repair your car to manufacturer specification, keeping your dealer warranty without main dealer expense.



Wm. Newham & Sons Est. 1835

Proprietor Robbie Savill AWCB

CHIMNEY SWEEPS & BLACKSMITHS



CHIMNEY SWEEPING

BIRD GUARDS, COWLS & POTS FITTED

CCTV INSPECTIONS & SURVEYS

STACK REPAIRS & REBUILDS

RIGID STEEL SYSTEMS ERECTED

STAINLESS STEEL and PUMPED CONCRETE
CHIMNEY LINING

STOVES SUPPLIED, INSTALLED & REPAIRED

FIREPLACE ALTERATIONS & RENOVATIONS

FULL RANGE OF FIREPLACE FURNITURE
made to order

01579 347777

ADVERTISE HERE!

For just **£10** per month incl
VAT.

2 MONTHS FREE for a 12
month order. i.e. **£8.33 incl VAT**
per month for 12 mths

See the full tariff on page 3

**One thousand copies per
month** distributed free of charge
to households in the Parish of St
Ive.

J. J. Child

Plumbing and heating engineer.

Oil appliance service, repair and breakdowns.

Over 30 years experience

Call John: 01579 362336 or 07837 921086





Pensilva & St Ive Post Office Service

Pensilva: Through the coffee shop on the 1st floor of Millennium House

Tuesdays: 9am to 1pm.

Wednesdays: 9am to 12 noon.

Fridays: 9am to 12 noon

**The Millennium House
coffee shop is also open on
these mornings.**

.....

St Ive: At St Ive Village Hall

Wednesdays: 10:30 to 11:30am

**Coincides with the St Ive
Village Hall Coffee Morning**

Saint Ive Parish tree-planting survey

Please let us know about any trees that you plant within the Parish. We will include them in our own survey and we will notify the Forest for Cornwall on your behalf, if appropriate.

email posicrp@gmail.com or message us on Facebook

www.facebook.com/posicrp or phone 01579 364016.

Pictures very welcome.

