

# THE PARISH PUMP



June 2022  
Edition 487



**The Newsletter for the Parish of St Ives**



This month we will see the Platinum Jubilee Celebrations of our country's longest-serving monarch. A lady rightly renowned for her sense of duty AND her sense of humour.

## Disclaimer

The articles appearing in this magazine do not necessarily reflect the views of the Parish Council nor of the Parish Pump Editor.

## Parish Councillors Telephone List

Alan Moss (chair)	01579 362064	Ivor Vaughan (vice-chair)	07979 934604
James Bruce	07411 192645	Marlene Carr	01579 362919
Martin Corney	01579 382450	Sandra Doe	01579 363096
Rosemary Farley	01579 384810	Nigel Gisby	01579 363096
Ron Greenhough	01579 363096	Tony Hodson	07973 536964
Nigel Libby	07968 891814	Paul Mann	01579 363757
Craig Vaughnley	01579 364083		

## Meetings of St Ive Parish Council

Meetings are now being held on the 2nd Monday of the month except August and December when no meetings are held. Please see the Parish Council website for meeting dates, agendas and minutes.

<http://st-ive-parishcouncil.gov.uk/minutes-agendas/>



**Devon & Cornwall Police**  
Building safer communities together

 **101**

Minicom 18001 101

## Police Community Neighbourhood Office

Your Community Support Officer is PCSO Steve Edser 30173.

email: CIOSNBMLLST@devonandcornwall.pnn.police.uk

To report a crime call 101 or go to [www.devon-cornwall.police.uk](http://www.devon-cornwall.police.uk)

In an emergency call 999

## Contact details for St. Ive Parish Council and for Millennium House

Address for correspondence: Millennium House, Century Square, Pensilva PL14 5NF

General Parish matters should be raised initially with the Parish Clerk, Jenny Hoskin, who will present them to the Parish Council.

Telephone: 01579 363096, email: [stiveparish@btconnect.com](mailto:stiveparish@btconnect.com)

For accounts matters for the Parish and for Millennium House contact John Body, Finance Officer: 01579 362102, email: [millenniumhouseadmin@btconnect.com](mailto:millenniumhouseadmin@btconnect.com)

Millennium House enquiries and reservations: 01579 363096

email: [millenniumhouse@btconnect.com](mailto:millenniumhouse@btconnect.com).

On the web: Millennium House Website: [www.cornwallvenue.com](http://www.cornwallvenue.com)

Parish website: [st-ive-parishcouncil.gov.uk](http://st-ive-parishcouncil.gov.uk) Facebook: [facebook.com/stiveparishcouncil](https://facebook.com/stiveparishcouncil)

## PARISH PUMP ADVERTISING COSTS

The prices for advertising in the Parish Pump are as follows:

The below prices include VAT at 20%:

**Quarter page: £10:00 per month or £100:00 for 12 months.**

**Half Page: £20:00 per month or £200:00 for 12 months.**

**Full Page: £33:00 per month or £330:00 for 12 months.**

## Parish Pump Information and Contact Details

To contact the editor please email: [parishpump@btconnect.com](mailto:parishpump@btconnect.com)  
or phone the Parish office: **01579 363096**.

Hardcopy submissions by post or by hand to the Parish office, Millennium House, or Millennium House reception.

Softcopy submissions: By email to the editor in MS Word, MS Publisher, pdf, Tiff or jpeg. Please use A4 pages and minimum 16 point font as the Pump is initially produced in A4 size and reduced to an A5 booklet at the printing stage. If in doubt please contact the editor.

Bargain Corner free ads by email to the editor or drop off at the Parish Office.

Deadline for the Parish Pump is STRICTLY 15th of every month

## From the Editor

It's the last week of May and the World around us is suddenly teaming with new life. Two robin fledgelings in the road a couple of weeks ago. Nine mallard chicks in the pond last week; the mallard mother moved them on and, the next day, three moorhen chicks took their place. The day after that, three became five. A roe deer fawn checking out our garden early in the morning two days ago. A blue tit fledgeling this morning, a little ball of fluff sitting on the window ledge with its beak pressed up to the glass, cheeping its heart out. With every cheep, a tiny spot of condensation formed on the outside of the glass, then quickly disappeared. After a while the little bird flew off, aiming for some branches a few metres away, but the branches were a bit higher than the window ledge and the breeze was unfavourable, making things very tricky for a tiny thing like that, but it made it, eventually. In case anyone thought it might be out of breath after the struggle, it immediately started to tweet again at the top of its voice. A brand-new life in a brand-new body, weighing almost nothing, with the heart of an ox and the pluck of... well, whatever animal has the most pluck, probably a blue tit chick.

It's heart-warming to see the natural World continuing its cycle, no doubt adapting to change in an evolutionary kind of way. The natural World can also be destructive: hurricanes, earthquakes, tsunamis, wildfires and, sadly, we must include human activity, because we too are part of nature.

Keep well - Joe

### St Ive Village Hall

Gardening Club	1st Monday monthly 7:30pm	01579 382762
St Ive Snooker Club	Monday & Thursday 7:00pm	01579 382315 R Bunkum
Yoga	Tues 4:30-6.00 & 7:00-8:30pm	07947 785554
Post Office	Wednesday 10:30 - 11:30 am	
Coffee Morning	Wednesday 10:30 - 12:00	
Art Group	Fridays 11:00am - 4:00pm	07772 639942
Social Evening	Fridays from 7:30pm	01579 384810 Rosemary

**St Ive Village Hall is available for hire, £5.00 per hour. Includes use of the kitchen & electric (except wall heaters which are on a £1 coin meter). Ring Amanda Eveson on 01579 388782**

## **Chairman's Report June 2022**

Flaming June... let's hope so! The Queen's jubilee celebrations, planned by our Jubilee committee, I'm sure will make it a great weekend. Check out the flyers on the next page and pages 22 to 31 of this edition of the Pump. Things like, children's disco and bingo, Family Barn Dance (tickets still available), Saturday Gala Day, including Inflatables; Mark's Arc; a dog show and 'Wacky Wheelbarrow and Wheels Pageant', decorate a wheelbarrow or anything with wheels.

Don't forget to enter the 'Pensilva in Bloom and the 'Scarecrow' competitions too.

Sunday will be the Celebration Lunch. Meet with friends and neighbours, bring a picnic sit on the field or use a table, we have some available, and listen to the music we have planned. I look forward to seeing you all.

Stay Safe

Alan Moss

### **Opening times for the Mel Bar at Millennium House**

Thursdays            5 - 11 pm.

Fridays            5.30 - 11 pm.

Saturdays            5 - 11 pm.

Also Tuesdays        5 - 11pm but only when the Function Room is in use.

These times may change depending upon footfall.

### **Supporting Guiding & Scouting Activities in Pensilva 200 CLUB Draw Results for April 2022**

<b>1st No. 81 Mrs P Walters</b>	<b>2nd No. 187 Mrs B Bennett</b>	<b>3rd No. 166 Mrs S Rowe</b>
-------------------------------------	--------------------------------------	-----------------------------------

**Thank you for your support**



See pages 22 to 31  
for lots relating to  
the Queen's Jubilee  
Celebrations in  
Pensilva

**2-5  
JUNE**



*Queen's*

**PLATINUM JUBILEE**  
**AT MILLENNIUM HOUSE, PENSILVA**

**THURSDAY**

**2ND JUNE**

Children's Disco 4-6pm  
by Pensilva Preschool

**FRIDAY**

**3RD JUNE**

Morning: Tabletop Safari 10-2pm around the village  
Afternoon: Children's Bingo  
Evening: Family barn dance with live Ceilidh band,  
bar & pasties

**SATURDAY**

**4TH JUNE**

Jubilee Celebration Day! Including stalls, Wacky  
Wheelbarrows pageant, dog show, choir, FREE  
bouncy castle & activities

**SUNDAY**

**5TH JUNE**

Big Jubilee Lunch with Live Music from  
Ice'n'Slice and Palm Springs

Enter the Garden in Bloom or the scarecrow competition (see entry forms in Pump)  
Get together with your neighbours to decorate your house, or street.

Enquiries to [parishjubilee619@gmail.com](mailto:parishjubilee619@gmail.com)

## PENSILVA WI MAY REPORT

Due to the speaker being unable to attend, Hayley from Caradon Physiotherapy stepped into the breach at the last moment to tell us about her work. She outlined the problems that many of us face and gave useful advice on how to occasionally alleviate the situation. Of course sometimes it is necessary to seek professional advice and Hayley told us about the facilities they offer at their practice. She ended her talk by getting us on our feet to try a bit of Pilates, which is another service she offers at Caradon Physiotherapy.

The members were informed of the many events which have been organised, particularly the Jubilee celebrations next month.

Competition results – Flower of the month 1<sup>st</sup> Cherry Woodhouse, 2<sup>nd</sup> Alison Willis, 3<sup>rd</sup> Jenny Rendle.

‘A relaxing verse’ 1<sup>st</sup> Jenny Rendle, 2<sup>nd</sup> Sue Hill, 3<sup>rd</sup> Mary Yates. The winning verses were read out and it would appear we have some very talented ladies in our midst.

June meeting will be held at 7.15pm on Wednesday 8<sup>th</sup> June at Millennium House when we will be enjoying a Jubilee (indoor) Garden Party.

Competitions are Flower of the month and a decorated (Royal?) hat.

### ST. IVE COMMUNITY SOCIAL EVENING



### VILLAGE HALL



**FRIDAY NIGHTS 7.30PM**

**Funded by Contributions**

PENSILVA WOMENS' INSTITUTE

**HORTICULTURAL SHOW**

To be held in

**Millennium House, Pensilva**

On

**Saturday 10<sup>th</sup> September 2022**

To be opened at 2.15pm

By

**CFWI CHAIRMAN - HELEN KESTLE**

**CLASSES**

**HANDICRAFTS**

**SECTION 5 - OPEN**

CLASS

- 62. Knitted or crocheted item
- 63. Item of needlework
- 64. Painting (any medium)
- 65. Item of sugarcraft or porcelain
- 66. Any other handicraft, not included in the above classes.
- 67. Something new from something old.

**PHOTOGRAPHY**

**SECTION 6 – OPEN**

CLASS

- 68. Fungus/ Print
- 69. The Great British Summer Print
- 70. Keeping active Print
- 71. Granite milestone Print
- 72. Own Choice Print
- 73. A digitally enhanced photograph of one of the above classes Print

**SECTION 7 – OPEN JUNIOR UNDER 15**

CLASS


- 74. A Farm vehicle Print
- 75. Moorland animal Print
- 76. Own choice Print

**Prints may be colour or black & white, no larger than 7" X 5" (18 x 13 cms.)  
mounted on white card 8" X 6" (20 x 15cms.).**



## Pensilva Film Club

Well we possibly had our largest audience since restarting Film Club last October for the showing of the award-winning movie “Belfast”. This followed the life of a young boy and his family living in Belfast during the times of “trouble” which many of us will remember all too well. It’s not often we see Dame Judi Dench playing “second fiddle” to another actor but this is exactly what happens during this excellent film which stars the 12-year old Jude Hill – a young man I’m sure we will see a lot more of on the silver screen in years to come.



Pensilva Film Club (Part of C-Fylm, Creative Kernow)

Presents: At Millennium House, Pensilva

### **The Father**

**17<sup>th</sup> June at 7pm for 7:30 start.**

Next month’s offering (17th June) is “The Father” starring Olivia Coleman (daughter) and Anthony Hopkins, her father, who is gradually succumbing to dementia. Hopkins, who himself was into his 80s when this film was made, went on to win a “best performance for an actor in a leading role” Oscar last year for his portrayal of Anthony (Father).

As always, doors open at 7pm for a 7.30 kick-off. New members always welcome at a charge of £6 including the first film. Members pay just £3 per film and membership lasts for a year. We are now showing subtitles whenever possible. The Mel bar is open for pre and post show drinks.

Many thanks for your continued support and hope to see lots of members, new and “old”, in June.

Pensilva Film Club - In association with C-fylm, part of Creative Kernow

# The Parish of St Ive Presents...



The Together Project is a year-long project until spring 2023, focusing on local energy, food, social and environmental needs. It has been designed by local people who are part of the Parish of St Ive Community Resilience Project, and it has been funded by the National Lottery Community Fund.

The aim of The Together Project is to build on the strengths of our community, and to pull together to meet future challenges with strength and confidence. Working together, everyone living in the parish of St Ive could benefit from greater community connection, better health and well-being, and more sustainable local food and jobs. The events of the last few years have encouraged us all to recognise the importance of investing in our community. We want to learn from the old ways and be inspired to develop new ways in which we can continue to improve our parish together.

Over the next year we invite you to join us in any way you can and be part of shaping and developing this unique opportunity for our parish.

**This is our community, our environment and our children's future.**

**What do we want that future to be?**

**The year ahead:**

**Where you can find us/ upcoming Events:**

Pensilva Jubilee Celebrations @Millenium House, Pensilva

The Big Father's Day Picnic @St Ive Community Garden on Sunday June 19th, 2022.

Pensilva Preschool Funday @Millenium House Field (date TBC)

**How to get involved:**

If you would like to be part of the Together Project in any way, big or small, please contact:

[posicrp@gmail.com](mailto:posicrp@gmail.com) or phone 07768 130520



## **St Ive & District Gardening Club Report - May 2022**

On Mon, May 9 we visited The Forgotten Garden of Lewtrenchard, on which we had a talk last year. We met in the church car park & I was struck by the birdsong; a lovely greeting. To begin, a volunteer explained the background of the area & the Garden. Lewtrenchard is located by the River Lew. 'Lew' is believed to come from a Celtic word for 'sparkling' & trenchard from the name of a Norman family which lived in the area in the Middle Ages. Next to the Forgotten Garden is the 13th century St Peter's church, rebuilt in the 16th century. Opposite is Lewtrenchard Manor, now an exclusive hotel & restaurant but once home to Sabine Baring-Gould, creator of the Garden, who inherited the house in the 19th century. Sabine was a devout Christian, a Reverend, author & seen by some as an eccentric character. He married Grace in 1868 & they had 15 children, but only 1 made it to adulthood. Grace fell ill with arthritis. Sabine thought being outdoors would be good for her and decided to make a garden for her to enjoy. Sabine oversaw the transformation of the house into the grand Manor it is today, instructing gardeners & designers to plant trees, shrubs & flowers from all over the world. Sadly, Grace died & a heartbroken Sabine never recovered. The garden was lost too. It was re-discovered a few years ago and is now a woodland, very natural, but it clearly started life as a beautiful creation. We walked the carefully crafted paths that wind around the woodland, from where it possible to see everything without missing the highlights.

The first historic item we saw was the lime kiln, which looks like it has been added to over the years. It is a square building, but round inside. Looking towards the entrance, a large tree stump is visible on the roof. It looks like a tree is growing from inside the kiln, but inside, no sign of it! The first hint that Nature had once reclaimed this Garden.

Walking towards the woodland, we passed a now pond; large, full of plants & probably loved by wildlife. I couldn't help but wonder if this pond was created as part of the Garden for Grace or if it was another feature nature had created itself. The next feature we came across was the Holy Well which has its own story. First mentioned in 1830, Sabine rededicated it in 1913. It was rediscovered just 10 years ago by one of the volunteers at the garden. He explained that a lot of time was spent looking for this well using available information. Eventually they looked a little way from the water and found it; a hole in the ground! The surround had not survived so the current 'house' is new, but does it justice. Further up the path, the woodland at this time of year is covered in British bluebells. As I mentioned, the birdsong was incredible, complementing the serene, peaceful & quiet feel of the woodland. Though now a woodland, it is easy to see how it would have made a delightful garden. The bluebells were simply sublime, untouched, growing away, colouring the woodland floor to look more like an ocean view than a woodland. The blueness flowed down the incline as we wound around the path. Coming out of the woodland, the church yard comes back into view. Quite fittingly the place where Sabine & Grace lay.

Our volunteer guides let us into St Peter's Church, formerly St Petroc's. A small church, but what it lacks in size it makes up for in looks. Many stones bear the Baring name. Equally, the ends of some of the pews are original, found by Sabine, with what are probably references to the Baring name, a bear carved into one. The carving in the church cannot be missed; so intricate, detailed, every time I looked at it I saw something new. There is also a painting of Sabine's daughter. Sabine was honoured with an electric light within the church, a grand luxury at the time. We spent a while taking in all that this hugely interesting little church has to offer.

The Forgotten Garden is free for all to enjoy, there are many seats dotted around & dogs are welcome too. I would highly recommend a visit, especially if you're looking for peace & quiet. A real 'made for love, loved by nature' place.

Next visit: Monday 6th June to Tor Garden Plants, Brentor. Leave St Ive park at 6:45pm.

## TWELVE YEARS OF WILDLIFE WATCHING IN THE PARISH OF ST. IVE

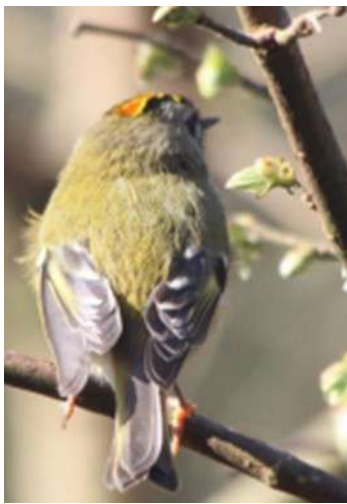
Since moving to the Parish at the end of 2009, I have been photographing and recording the wildlife which I see at my home on the edge of Pensilva on a daily basis. This month I am mourning the loss of a tree which brought this wonderful little bird right up to our house ...

### **THE GOLDCREST**

The last major storm brought down a very large fir which we had (foolishly!) left too near to our house as it brought many birds, but particularly goldcrests, in for a close up view. The branches we had left for the birds cushioned the fall of the tree as it gently leant against the house, so no great damage done.



The goldcrest, along with its cousin the much rarer fire crest, is our smallest bird. It is only 9cm long, with a wingspan of 14 cm and weighs only 6gms! The bright yellow crest which gives it its name is not high, but is very distinctive.



In the breeding season, the male will part this gold band to reveal a red interior when displaying. This can be seen in the photo to the left, although you will need to go to the online version to see the colour. This red area can lead to it being mistaken for a firecrest, but the lack of the firecrest's bold black line running through the eye confirms its identification. During breeding, they make perfectly formed round nests with a cup in the

centre. This is made using mosses and lichens and spiders' webs. I have twice found nests fallen onto the ground under the fir trees in which they prefer to build them. This photo shows one of these nests (now rather dried out). It measures 8cm across in total and the cup is 4 cm across.



Amazingly, 6-8 little eggs are laid, so up to 8 chicks will be raised here as they grow for 18 days before fledging. The nest is flexible enough to expand, but this still seems astonishing.



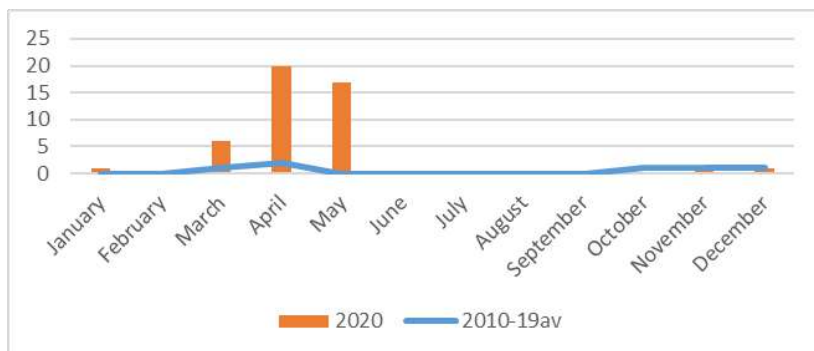
Goldcrests feed on tiny items such as spiderlings, moth eggs and other small items of insect based food. It is this, together with the need for spider's web for nests that brings them to our house. At the end of winter, tiny spiders' nests around the edge of window frames hatch, bringing a plentiful supply of food. 2020 was our year of the goldcrest. Through spring we would hear a tapping on the bathroom window as they came to feed. They did not seem to see us through the glass and we were able to stand only feet away and watch this spectacle. The photo below shows just how close we were able to get. On the negative side, our



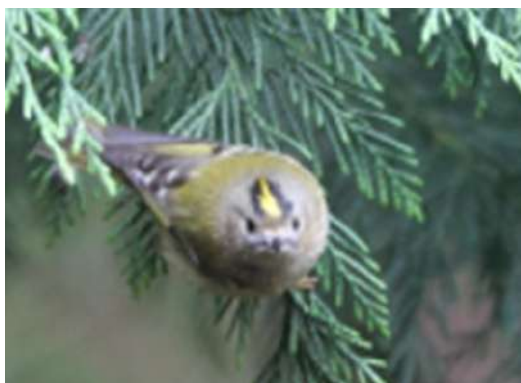
windows did get pretty mucky, and we came to recognise goldcrest poo! It formed a yellowy dribble with a droplet at the bottom containing what looked like a seed within in it. This year we have again seen this on the next window along where the hedging comes out

further and safety is not too far away, so there may be a glimmer of hope that we will see them again. However the chart below shows how lucky we were in 2020 when the number of sightings (represented by the columns) towers above the line showing the average for the previous 10 years. The numbers in 2021 returned to a more normal level.

No. of Days  
Goldcrests Sighted  
per Month in 2020,  
Compared to the 2010  
-2019 Average



Although not of conservation concern, goldcrests are vulnerable to habitat loss, highlighting the need to preserve our woodlands and protect healthy trees whenever we can. Keep your eyes open when you are in woodland, particularly where there are coniferous trees, or even in gardens such as mine with mature trees around, and you may be lucky and see one. They tend to stay near cover and flit about making it difficult to photograph them. Here are a couple more of our better attempts:



HAPPY  
WILDLIFE  
WATCHING!  
HILARY

UK Greenddeal is a company built, owned, and run by family and friends ensuring customers and their homes receive a personalised service with care and integrity at the heart of all we do.

Our aim is to improve people's quality of life and comfort in their own homes by reducing their energy consumption, whilst helping to stabilize our fragile planet. Much of our work comes from referrals from satisfied customers to friends and family, and we take great pride in the service that we provide.

UK Greenddeal is an independent eco-surveying company. We look at all aspects of residential properties looking to improve their carbon footprint and reduce their energy emissions, assisting the government with the mammoth task of bringing all greenhouse gas emissions to net-zero by 2050, whilst avoiding any costs to our customers.

The core of our work is to utilise government ECO3 funding (and soon ECO4 once this is released by the government) to provide free fully funded energy-saving measures to you.

Once we identify possible improvements we will guide you through the funding process from the initial survey, to placing your work with a government-approved national award-winning installation company, to improve your property's energy efficiency, yet not costing you a penny.

Free options available include the following:

- Cavity Wall Insulation (Bonded bead insulation is used NOT blown mineral fibre that is unsuitable for Cornwall – Fully funded )
- External Wall Insulation (solid builds – Fully funded)
- Internal Insulation inc plaster boarding & skimmed finish (solid builds - Fully funded)
- Loft Insulation up to 270mm (Fully funded)
- First Time Heating Systems (Fully funded)
- Electric Heating Upgrades (Fully funded)
- Mains<sub>4</sub> Gas Boiler Replacement (Funded with possible contribution on a case by case basis, boilers will be checked for eligibility during your survey/enquiry.)

## **REDUCE YOUR BILLS AND WARM YOUR HOME.**

All the insulation work we provided comes at no cost to yourself (in fact you have already paid for this through your energy bills) and will come with a 25-year guarantee backed by the governing body of insulation CIGA.

It's estimated that 25% of all heat loss from an uninsulated home is through the roof which makes insulating the roof space one of the most cost-effective solutions. It can save you around £250 a year.

Cavity Wall Insulation with bonded beads is a quick, hassle-free way of insulating your home. 45% of a property's heat can escape through cavity walls and an average property will save £300 a year with cavity insulation.

If your house was built before 1919, it's likely that it was built with solid walls. Twice as much heat escapes from solid walls than cavity walls, so internally or externally insulating solid walls can considerably cut your heating bills – you could have an additional £450 per year in your pocket.

Upgrading your heating to a more modern and energy efficient system or having a first time heating system installed reduces both your energy consumption and bills. Our A-rated boilers are able to save you up to £350 annually, as heating accounts for approximately 60% of annual energy costs.

**If we CAN help  
you, we WILL!!  
Call John your  
local parish  
surveyor today:**



**07462 450184**

We use only the highest quality  
BBA products and we're a Green  
Deal approved installer PAS2030.



UK Greenddeal work within the Ofgem regulated ECO scheme, as well as partnering with numerous local authorities to offer you free\* insulation measures via your local authorities LA Flex Scheme.  
\* Subject to survey - Terms & Conditions apply.

<http://ukgreenddeal.org.uk>



# Ever tried... **Ladies Walking Netball?**

**Come along to Millennium House, Pensilva**



**Thursdays  
4.00pm - 5.00pm**

**£2 per session**

**For further info contact [rosemaryfarley@gmail.com](mailto:rosemaryfarley@gmail.com)  
or Tel. No. 01579 384810**

## **SHARE Recycling for charity project.**

**Due to the road works, there will be NO pick up collection in June at St. Johns.**

**You can drop to The Parish Hall car park Blue Bins in Upton Cross or Liskeard Cattle Market on Saturday June 11<sup>th</sup> from 11 – 12noon**

Remember all those Quality Street, Roses and Celebrations sweet tubs we collected over Christmas, January & February... it was 100's !!

Devon Contract Waste processed them into picnic benches at their Exeter site ... it takes 3,466 tubs per picnic bench.

They also raised ..... **£5,736.28** to be split 50/50 between [Dartmoor Zoological Society](http://www.dartmoor-zoo.co.uk) and [Mind](http://www.mind.org.uk) charity.

SHARE members are planning to visit the site, if interested contact us.

The list of items we can raise money on for charity, is always changing, check here [www.south-hill.co.uk/charity-recycling](http://www.south-hill.co.uk/charity-recycling)

We can now accept **all brands** of coffee plastic bags and sachets.





## **Millennium House Community Transport**

### **Do you need transport to and from the doctor or hospital?**

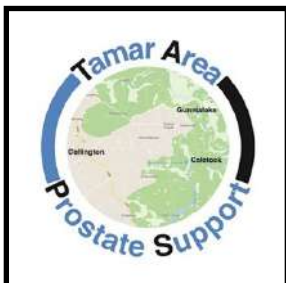
Millennium House Community Transport's aim is to connect local communities and reduce social isolation.



If you need transport to Hospital, doctors or vaccination and have mobility issues, or are unable to drive to your appointment, please contact Millennium House on:

**01579 362919 or 01579 363096** and we will try to help.

To volunteer as a driver please call Millennium House on **01579 363096**.



## **TAPS ARE NOW MOBILE**

**Email: [tapsinfo555@gmail.com](mailto:tapsinfo555@gmail.com)**



Two events we are now booked into are:

**3rd June at Upton Cross Jubilee Field**

**4th June Pensilva Millennium House**

If you or someone close to you has just been diagnosed and would like to chat with someone who is already living well with prostate cancer diagnosis give us a call we are always willing to listen and give support where we can.

If you are involved in running a local show or event and would like our presence, or for us to give a talk to your group, please let us know.

**Paul Mansell 01822 832179    Harry Lawson 01579 383258**

**John Stewart 01822 833343    Stephen Williams 07735 380883**

**Website: <https://www.tamarareaprostatesupport.org>**

# Pentecost Sunday

5<sup>th</sup> June

St John's Church

Pensilva

11.00 am

Come, celebrate & give thanks

Come Holy Spirit

Come.....



Our Faithful  
Queen  
70 years of  
faith & service



**T. Tribute**

**The Tribute Cluster of Churches**

**K. Kids and**

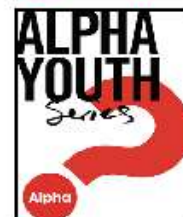
**Sunday 5<sup>th</sup> June**

**Y. Youth**

**Primary aged kids:  
4.30 - 6.00 pm**

**Secondary aged youth:**

**6.00  
to  
7.00 pm**



**at Menheniot Parish Church**

To book a place contact: [revbeccabell@gmail.com](mailto:revbeccabell@gmail.com)



# Teatime Church



For children and their families

Sunday 12<sup>th</sup> June

3.45pm

St John's Church  
Pensilva

Sharing a Bible Story

Playing Games

Singing and Praying Together

Eating Tea



Teatime Church will be held on the 2nd Sunday of each month  
at St John's Church

For more information contact: Rev Becca Bell  
Rev Li Selman

[revbeccabell@gmail.com](mailto:revbeccabell@gmail.com)  
[revliselman@icloud.com](mailto:revliselman@icloud.com)



# Good Grief Cafe

St John's Church

There is no right or wrong way to grieve. We aim to bring the bereaved community together, with time to share experiences and to bring comfort to one another in what can be an isolating and lonely time. There is no agenda, just free tea, cake, chat and friendship. All are welcome, and please use this as an opportunity to invite someone.

*Wednesday 15<sup>th</sup> June 3.00 to 5.00 pm*

*Contact Geoff on 01579 362698*

# PENSILVA MEMORY CAFE

*If you have memory problems or you are a carer for somebody who does, and would like to meet others who understand your situation, then join us at St John's Church*



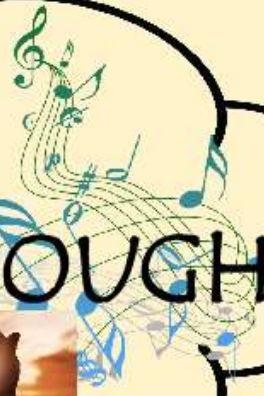
*Thursday 23<sup>rd</sup> June 2.00 to 4.00 pm*

*Contact Geoff on 01579 362698*





# FOOD for THOUGHT



SUNDAY

26<sup>th</sup>

June

5.00 PM

St John's Church  
Pensilva

A time of fellowship  
and informal worship  
with a shared afternoon tea



For further information  
& to arrange transport:  
Geoff 01579 362698

**Tuesday**  
**28<sup>th</sup>**  
**June**

**St John's**  
**Church**  
**Pensilva**  
**on the**  
**last Tuesday**  
**of the month**

**2.00**

**to**

**4.00 pm**

**Contact Kathleen**  
**01579 363686**

## knit and natter

Do you enjoy stitching,  
knitting, crocheting?

Join our friendly knit and natter group.  
Come and meet new friends and swap tips  
and ideas – all ages and abilities welcome!

Drop-in!

There is no charge  
for this activity but there  
is a Donation Box if you  
would like to make a  
cash contribution.

---

# **TABLETOP** **SAFARI**



## **FRIDAY** **3RD JUNE**

**A WALK-AROUND TABLETOP SALE,  
10AM-2PM AROUND THE VILLAGE -**

---

**SELLERS, CONTACT:**  
**SARAH - SM.PENSILVA@GMAIL.COM**  
**OR JUDY - 01579 208836**

---

**June Update:** There will be plenty of stalls to keep us busy walking round the village. The route will run from just above the shop at one end to Amanda Way at the other, with various roads in between. A more detailed list of locations will be available in advance from the shop and Millennium House. If the weather is bad, it will all take place in Millennium House. Hope to see you on the day.





FRIDAY  
JUNE  
3rd

# BARN DANCE

FEATURING SPLANN  
CEILIDH BAND

JUNE 3RD 2022 - DOORS OPEN 7:30PM

TICKETS £5 ADULT / £2.50 CHILD  
ON THE DOOR OR IN ADVANCE FROM  
MILLENNIUM HOUSE RECEPTION  
01579 363096

PASTIES WILL BE AVAILABLE!

MILLENNIUM HOUSE, PRINCESS ROAD,  
PENSILVA, PL14-5NF  
[millenniumhouse.org.uk](http://millenniumhouse.org.uk)

# Family Dog Show



## QUEENS JUBILEE

4<sup>th</sup> of June 2022

13.00 The Millennium House Pensilva PL14 5NF

1. Puppy under 12 months
2. Fastest biscuit eater
3. Prettiest Bitch
4. Handsome Male
5. Best rescue
6. Scruffiest Dog
7. Jubilee themed fancy dress, dog and handler
8. Most appealing eyes
9. Waggiest Tail
10. Dog judge would like to take home
11. Best in show for all 1<sup>st</sup> Places

£1 per class Rosettes to 4<sup>th</sup> place in each class



Sponsored by Charlotte at Fern Lodge Boarding Kennels & Cattery

Charlotte Tel : 07865073157





# VICTORIA INN

The Cross, Pensilva. Tel: 01579 363933

---

**Saturday 4th June, JUBILEE PARTY EXTRAVAGANZA.** Join the fun from 7.30pm. Disco / Karaoke, and “Happy Two Hours.” Food available during the evening 5-9pm with price reductions on all drinks. 10% off all food if eating in. Bookings now being taken, so please call to reserve your table.

---

## Opening Hours

Mon & Tues: Closed  
Wednesday: Lunchtime: Carvery from 12-2pm (see below)  
Evenings: 5pm to 9pm  
Friday: 5pm to 11pm  
Saturday: 2pm to 11pm  
Sunday: 12 noon to 6pm  
Times may vary when we have functions / live music.

---

## Meals on Wheels Service

Wednesday to Sunday (varied menu)

Please give us a call if this may be of interest to you  
or if someone that you know may need our help.

---

**Our full menu is also available for delivery or to eat in.**

Wednesday Evening - Homemade Pie Night (varies weekly)

Also includes a dessert. **£9.95**

Please check our weekly ‘Specials’

Thursday Evening - Curry Night (Eat in or Takeaway) **£6.00**

Friday & Saturday Evening - Fish, Chips & Peas Special

Small **£5.95**, Large **£7.95**. Add a dessert for **£1.00**

Sunday Carvery 12noon to 3pm **£9.50** (Collection, Delivery or Eat in)

---

## Wednesday Lunch

This will be on the first Wednesday of each month. More will be added if necessary. April 6th 12-2pm.

Please phone 01579 363933 to book.

## PENSILVA IN BLOOM ENTRY FORM

**Entry piece must be on display from 28th May to end of Jubilee.  
Return completed form to MH reception or coffee shop.**

Judging will take place during the week commencing Monday 30th June, and the winner will be announced on Jubilee Lunch. Judge's decision is final.

Entry Category (multiple allowed):

☐ Garden    ☐ Hanging Basket    ☐ Tub / Trough

Name: \_\_\_\_\_

Address: \_\_\_\_\_

Postcode: \_\_\_\_\_ - \_\_\_\_\_

Telephone: \_\_\_\_\_

Visiting notes: \_\_\_\_\_

\_\_\_\_\_



## PENSILVA CARNIVAL SCARECROW COMPETITION ENTRY FORM

**Scarecrow must be on display from 29th May to end of Jubilee Weekend.  
Please return entry form to MH house reception before 27th May.**

Photos will be displayed at Millennium House reception during Jubilee Weekend for public to judge.

Name: \_\_\_\_\_

Address: \_\_\_\_\_

\_\_\_\_\_

Postcode: \_\_\_\_\_ - \_\_\_\_\_

Telephone: \_\_\_\_\_

Email: \_\_\_\_\_



# QUEEN ELIZABETH II PLATINUM JUBILEE CELEBRATIONS St Ive Parish 2022



## PULL OUT ITINERARY

## **THURSDAY 2<sup>ND</sup> JUNE**

Children's Disco hosted by Pensilva Pre-School

At Millennium House 4.30pm – 6.30pm

## **FRIDAY 3<sup>RD</sup> JUNE**

**TABLE TOP TRAIL** 10am – 2pm

MAP of trail will be available showing where tables are in the village, some table will be set up on the front lawn of MH.

**CHILDREN'S BINGO** 2.30pm AT MILLENNIUM HOUSE

All children to be accompanied by an adult please.

**FAMILY BARN DANCE** (SPLANN CEILIDH BAND) 7.30pm - LATE

Tickets available at Millennium House Reception:

Adults £5.00, Children £2.50

Pasties available on the night.



**SATURDAY 4<sup>TH</sup> JUNE JUBILEE GALA DAY**  
**from 12 noon**

**To include:**

**WACKY WHEELBARROW AND WHEELS PAGEANT –**

assemble at 12 noon in the carpark for a parade around the football field. Individuals (fancy dress optional) push decorated Wheelbarrows/buggies etc. round the course. We are aiming for 70 to match 70 years of Queen's reign.

**BOUNCING CRAZY INFLATABLES** to entertain the children

**MUSICAL ENTERTAINMENT**

**DOG SHOW**

**STALLS**

**REFRESHMENTS** available

The Millennium House Coffee Shop will be open

# **SUNDAY 5<sup>TH</sup> JUNE JUBILEE GALA DAY**

## **Starting at 12 noon**

Red, White and Blue is the theme, 'Royal' Fancy Dress optional with a 'Decorated Crown' competition.

Some tables and chairs will be available, or bring your own, but if you prefer, picnic on the field.

Decorate your Tables with flags / bunting etc

**The car park will be out of action.**

Musical Entertainment will be provided from 12.15 to 3pm

The Millennium House Coffee Shop will be open



# **PENSILVA IN BLOOM**

**QUEEN'S PLATINUM JUBILEE**

**PRIZES FOR:** BEST GARDEN  
BEST HANGING BASKET  
BEST TROUGH/TUB DISPLAY

**Must be on display from the 28th May to end of Jubilee weekend. Entry forms in the Parish Pump or MH reception.**

**Judging will take place during the week commencing Monday 30th May, and the winner will be announced at the Jubilee Lunch. The Judges' decision is final.**





# THE BIG SOUTH WEST cream tea



children's hospice  
SOUTH WEST

Raising money  
for local  
families one  
scone at a time

Host your own  
Cream Tea to help  
raise vital funds  
for children and  
young people living  
with life-limiting  
conditions.



Register for your  
free fundraising pack  
[www.chsw.org.uk/creamtea](http://www.chsw.org.uk/creamtea)



Making the most of short and precious lives across the South West  
Registered Charity No. 1003314



Sponsored by:



children's hospice  
SOUTH WEST

# rainbow RUN

It's back!  
The brightest fun  
run for everyone

Saturday 18 June 2022 ☺ RAF St Mawgan, Newquay  
Visit [www.chsw.org.uk/rainbow](http://www.chsw.org.uk/rainbow) to sign up

Register early for discounted tickets

You can also take part virtually!



Making the most of short and precious lives across the South West  
Registered Charity No. 1003314



# **St Ive Methodist Chapel**

## ***Services for June 2022***

<b>Sun 5<sup>th</sup> June</b>	- 3 pm	No service (village Jubilee celebrations) Landrake Chapel Anniversary Service
<b>Sun 12<sup>th</sup> June</b>	3 pm	Local arrangement
<b>Sun 19<sup>th</sup> June</b>	11.15am 6pm	United Service at St Ive Church Green Shoots United Service at St Ive Chapel
<b>Sun 26<sup>th</sup> June</b>	3 pm	Rev Jonathan Budd with Communion

## **ST JOHN'S CHURCH, PENSILVA**

A united congregation of the Church of England & the Methodist Church

### ***Services for June 2022***

Sunday 5<sup>th</sup> 11.00 am Pentecost Sunday Queen's Jubilee Service

Sunday 12<sup>th</sup> 11.00 am Café Church Geoff Cox & Carol Morse

Sunday 19<sup>th</sup> *No service at St John's, please come to:*

10.00 am Deanery Open-Air Worship at Looe RNLI Station

Sunday 26<sup>th</sup> 11.00 am Rev Andy Day *Holy Communion*

5.00 pm Food for Thought

**Thursdays** 10.00 am Morning Prayer Fellowship

***JUNE EVENTS*** Please see posters on other pages for full details

Sunday 12<sup>th</sup> 3.45 - 5.00 pm Tea Time Church for children & families

Wednesday 15<sup>th</sup> 3.00 - 5.00 pm Good Grief Café

Thursday 23<sup>rd</sup> 2.00 - 4.00 pm Memory Café

Tuesday 28<sup>th</sup> 2.00 - 4.00 pm Knit & Natter

*For further details of the services and events at St John's, or if you know of any illness or need in the village, please call Geoff, 362698 or Frances, 363718*

# Millennium House Coffee Shop Opening Hours

We are open Tuesdays, Wednesdays and Fridays, 9am to 1pm  
(to coincide with Post Office days).

Our intention is to open more days and for more hours as soon as Covid regulations allow.

Covid precautions are in place at all times, providing a safe environment for our customers.

## *All Being Well*

We are still open for three mornings a week. A maximum of six members can now attend at one time.

### Opening hours:

Monday, Wednesday and Saturday, 9am to 1pm.

Maximum six members at a time for each of three slots within each session: 9:00 to 10:20, 10:20 to 11:40 and 11:40 to 13:00

### **Prior booking is essential**

To book yourself in or for any enquiries, call in at the gym or telephone on **01579 363890**, during the opening hours listed above.

**22 years working in our local community to improve health, fitness and well being.**

# Badminton has restarted at Millennium House

Come and join our relaxed and friendly group.

**Mon & Tue 7:30 - 9:30pm**

For further info phone Nigel or Carol on 01579 363594 or 07885 798370



## **PENSILVA VILLAGE HALL**

**We are now open and back in business!**

Anyone wishing to book the hall for meetings, birthday parties or fundraisers, please contact Peter or Jackie Browning on **01579 363212** or email **[peterpensilva@gmail.com](mailto:peterpensilva@gmail.com)**

Please note that as well as hall rent there is a coin meter for



## **MOBILE LIBRARY**



**The County Mobile Library** visits our area every four weeks, always on a Friday. You can now browse the shelves again, but you can still pre-order books if you prefer.

Next visits: **May 6, May 27 and July 1.**  
(The last two dates have been changed due to the Jubilee weekend.)

Stops at The Victoria Inn, Pensilva from 10.25 to 10.45am; and Quethiock bus stop from 11.00 to 11.20am.



## **Struggling with Sight Loss?**

iSight Cornwall offers practical help to people living with sight loss in Cornwall including:

Low Vision: Advice for low vision aids

Assistive Technology: Advice on products

Benefits Advice: Assistance to claim entitlements

Equipment Demonstration: Advice on gadgets

Social Clubs & Activities: Links to clubs & activities in the county

For more details Telephone 01872 261110 or visit

[www.isightcornwall.org.uk](http://www.isightcornwall.org.uk)

# MILLENNIUM HOUSE

COMMUNITY CENTRE, AND DYNAMIC EVENT  
VENUE IN THE HEART OF EAST CORNWALL



#### Conferencing

We have four meeting rooms for all your corporate needs.



#### Function Room

For parties, discos, or just larger events; with adjoining kitchen and bar.

### Our Facilities

#### Sports Hall

For sports or larger events requiring a stage, the sports hall is our biggest venue.



#### Coffee Shop

Providing tea, coffee and cake. And for something stronger, there's the Mel, a licensed bar.



**Enquire today:**  
**01579 363096**

[www.millenniumhouse.org.uk](http://www.millenniumhouse.org.uk)  
PRINCESS ROAD, PENSILVA, PL14 5NF

## What Do We Do?

From wedding to wakes, kids or adults, corporate or community, we can host and cater your event. If you have an idea that's not covered here, get in touch and see if we're the right venue for you.

#### We're also home to:

- ✓ The Mel bar
- ✓ All Being Well Fitness Centre
- ✓ Post Office
- ✓ Sunflower Park kids playground
- ✓ Extensive playing fields
- ✓ Community Library

# Bargain Corner Free Ads up to £50

Ads are free for items up to £50. £5 charge for items over £50. Please leave a note at Millennium House reception, ring the Parish Office on **01579 363096**, or email **parishpump@btconnect.com**.

**\*\*\* Please let us know when your item has sold \*\*\***

**Single bed** & headboard. Never used. St. Ive area. **£15 ono. 07522 484979.**

**3-piece rattan suite.** 2-seat settee **£25**, 2 single chairs **£15** each, or **£50** the set. Good cond. Washable covers. Fire res. **01579 362819.**

Andrew James 3 litre **deep fryer**, never used and in VG cond. **£20.**  
Bosch Tassimo **coffee machine** used but in VG cond, Plus coffee, tea & creamer pods. **£15.**  
**07561 559448** - Buyer collects (Pensilva)

Black & Decker 18V **cordless drill** and charger in case. Hardly used. **£15.**  
Genuine Wimbledon **seat pad and kneeler** in one. In original packaging. **£10.**  
**25 military pouches** mostly unused so excellent condition. **£45.**  
**10 wooden moulding planes** Usable cond. 1 wooden spirit level & scribe. **£50.**  
Small **boat anchor** 19" h x 13" w. **£15.**  
Six coils of industrial steel cable now surplus to requirements **£35** the lot.  
**01579 384658** (Safe Distancing if reqd.)

Windows 10 Computer Tower, 19" Dell monitor, Mouse & Keyboard, all for **£50.** All in full working order. **07483 832642.**

**Ladies Superdry Jacket.** Size Med. Good condition. **£15. 01579 346982.**

**Black Beko fridge freezer** with water dispenser, excellent condition no damages etc. **£50.**

**Motorbike jacket (ladies)** Raven, black with pink details on it, size 12. VGC no damage or tears etc. **£20.**

Ladies Rocketdog wedge **flipflops** black with red and mixed colour beads on material, size 5. still in box as new paid **£10.**

**Upton Cross/Minions area**  
**07368 528398.**

Wood and cast iron **Patio Set.** 2 chairs, bench seat and table. Buyer collects. **£45**  
**01579 363626.**

**Canon IP2700 Printer. £20**  
**Computer screen 19" £20.**  
**Epson Perfection v350 Scanner Photo £20**  
**Sony Revia 42" TV. £45.**  
All in working order. **01579 363200**

Set of 3 **suitcases**, red, vgc, Antler, **£40** ono. **07770 747353.** Pensilva area

**Please let us  
know when your  
item has sold**



# New, High-Quality, Local Decorating Service

## **EDEN SERVICES**

**Mobile**  
**07775 515036**



**Office**  
**01579 641129**

Interior and exterior decorating, including spraying  
All work fully insured and guaranteed - References available  
High quality work at sensible prices  
Over 25 years experience  
Call Julian for a free, no obligation quote



### **R J Gardening & Handyman Services**

All aspects of gardening and handyman work undertaken.

- ~Local and Trustworthy
- ~Hard Working
- ~Reliable and Experienced
- ~No job too small
- ~Competitive rates

Contact Raymond on:  
07541 229064 or 01579 347622  
[raymond\\_pearcegb@yahoo.com](mailto:raymond_pearcegb@yahoo.com)  
Find us on Facebook

Find us online:  
[fresh\\_prop.co.uk](http://fresh_prop.co.uk)



Top quality carpet, upholstery & hard floor  
cleaning services based in Callington

Long-established cleaning professional

Domestic & commercial

NCCA qualified & member

Steam cleaning & dry carpet cleaning

Tile & grout + natural stone clean & seal

Vinyl & LVT including Amtico & Karndean

Call 0800 3893393 or 07905 188459

Or email [nevil\\_fresh@msn.com](mailto:nevil_fresh@msn.com)

## TRADITIONAL STONE SERVICES

CLASSIC & TIMELESS  
STONE MASONRY  
AND LETTERING

MEMORIAL CLEANING

COMMISSIONS TAKEN

**01579 363693**

OR

**07507 782282**



Domestic Electrical  
Property Maintenance  
Interior & Exterior Work  
Carpentry :: Decking  
Kitchens :: Bathrooms  
Wall & Floor Tiling  
General Plumbing

**MCCARTHY PROPERTY MAINTENANCE**

**Electrical Safety  
Register**

incorporating  
**ELECSA**  **ECA**  
Certification Ltd

HIGHLY REGARDED LOCAL BUILDER  
COMPETITIVELY PRICED  
COVERING THE SOUTH WEST

Contact Dominic

07968 599 675

01579 362 945

[info@mccarthypropertymaintenance.co.uk](mailto:info@mccarthypropertymaintenance.co.uk)

[www.mccarthypropertymaintenance.co.uk](http://www.mccarthypropertymaintenance.co.uk)



Maintaining and preserving our  
countryside for the benefit of all

Dry Stone Walls

Cobblestoning

Stone faced walls

Hedgelaying/steeping

Land management

All aspects of Landscaping

Mobile: 07539 296799 or

Email: [info@just-in-stone.co.uk](mailto:info@just-in-stone.co.uk)



## Naomi's Footcare Service

I provide a personal toenail-cutting service within the comfort of your own home.

To include removal of calluses, corns, hard skin, and reduction in thickening nails.

- ✓ Trained foot health practitioner.
- ✓ Fully insured
- ✓ DBS checked.

naomiturner84@gmail.com

07809 690385

## **Debbie Hicks - Counselling and Psychotherapy**

*Caring, confidential counselling for all.*

*I work in a therapeutic relationship to help you understand yourself better.*

*I offer a warm, approachable, relaxed environment for you to untangle your thoughts and emotions.*

**www.debbiehickscounselling.co.uk**

**Email: debbiehicks10@gmail.com**

**07851 133782**

*More info on my website or by contacting me.*



## **JP'S FRESH HOT FOODS**

**HOME COOKED SPECIALS AND DESSERTS**

**INCLUDING REGULAR TAKEAWAY MENU**

**THURSDAYS - 4PM - 7PM, EAST TAPHOUSE HALL CAR PARK**

**FRIDAYS - 4:30PM - 7:30PM, PRINCESS ROAD PENSILVA**

**LOCAL FOODS FRESHLY COOKED**

**CASH OR CARD ACCEPTED - PRE-ORDERS WELCOME**

**TEL. 07966 994585**



**JP'S FRESH HOT FOODS**

**EVENTS TAILOR-MADE AND CATERED FOR WEDDINGS, BIRTHDAYS AND ANY CELEBRATIONS.**

**PLEASE CALL FOR ANY FURTHER INFORMATION.**



# Westwood Garden Maintenance



*Antony Watts*

*Grass Cutting, Clearance*

*Weeding, Turfing*

*Hedge Cutting*

*Patio Cleaning, Planting*

*Regular Visits / One-off Contracts*

*Residential & Commercial*

**FREE ESTIMATES**

01579 362019   [www.westwoodgm.co.uk](http://www.westwoodgm.co.uk)   07952 094472

## JPH Plastering and Rendering

Internal plastering

Internal and external rendering

Internal/external painting & decorating

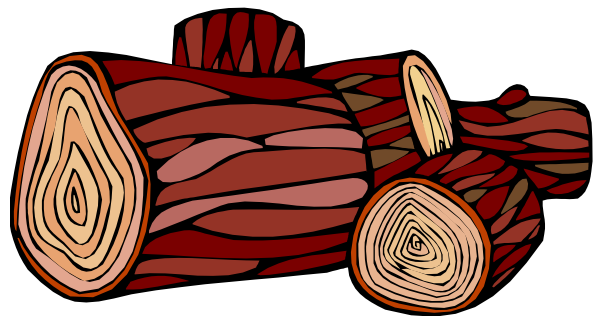
Property maintenance

Landscaping and land management

For estimates and no obligation quotes  
contact Justin on:

**07539 296799** or  
[info@just-in-stone.co.uk](mailto:info@just-in-stone.co.uk)

## SEASONED LOGS



**MIXED LOAD**

or

**HARDWOOD**

**Tel. Jonathan**

**Mobile 07966 070725**

or

**01579 363157**

## **PENROSS**

Rosecraddoc Lodge Holiday Bungalows  
(Between Pensilva & Liskeard)

Ideal for family & friends coming to visit!



Refurbished in 2018. Sleeps 4. Electric, heating, bedding & towels inc in rent. Patio. Free wi-fi. Follow us on Facebook.

Sorry no pets or smoking.

Contact Julie Tucker on 01579 362221 or

email [penhargetfarm@gmail.com](mailto:penhargetfarm@gmail.com)

for 15% discount

## **NICOLA GREENE**

BSc (hons) Podiatry MChs

HPC Registered Chiropodist/Podiatrist

**Home Visit Practice treating all  
your foot care needs:**

- Nail Cutting
- Corns and Calluses
- Thickened Nails
- Dry Cracked Skin
- Verrucae
- Foot Pain
- Diabetic Foot Assessments
- Wound Care

**T: 01579 590027**

**M: 07786164205**

**E: [nicki\\_greene@yahoo.com](mailto:nicki_greene@yahoo.com)**

# **Matt's Windows**

**Repair of Windows, Doors  
& Glass Unit Replacement**

**T: 01579 641228**

**M: 07533 387368**

**Debbie's Care Services**  
**Tel. 0777 948 3230**

Hello, my name is Debbie. I am a local lady who has been working in the community for over 30 years.

I provide the following services and more!

- Assisting bathing / showering
- Preparation of meals
- Cleaning / Shopping / Ironing
- Companionship / Friendship and emotional support
- Assisting with mobility
- Day, Evening and Night Care

**MUST STEP**  
**PODIATRY**  
**HCPC Registered**  
**podiatrist**

Fully insured  
NHS experience

Kind and caring

Home visits

**All your footcare needs**

Most areas covered

**Tel: 07522 577012 or**  
**07561 608296**

**DO YOU NEED A HELPING HAND?**

Reliable, friendly,  
experienced, mature  
local resident offering  
the following services:

**Cleaning      Ironing**

**Shopping      Light Gardening      Dog Walking**

CRB/DBS checked and fully insured.      Competitive rates.

**Contact Jess:** Telephone or text: 07934 764 327.

Email: homeangel77@yahoo.com. Find us on Facebook







KV Accounting Solutions



## Local Accountant offering fixed fee accounting services

With over 20 years experience, I am a fully qualified, friendly, local accountant

- ✓ Annual Accounts for Sole Traders and Partnerships
- ✓ Book Keeping & Payroll
- ✓ Personal Tax Planning
- ✓ Company Accounts
- ✓ Business Support & Advice

- ✓ Self Assessment tax returns
- ✓ iXBRL tax filing
- ✓ Tax investigation Fees Insurance
- ✓ Company Secretarial work
- ✓ Tax calculations for Sole Traders and Partnerships

Kate Vaughnley FCCA - Chartered Certified Accountant

Website : [www.kvaccountingsolutions.co.uk](http://www.kvaccountingsolutions.co.uk) or Email : [katevaughnley@gmail.com](mailto:katevaughnley@gmail.com)  
Telephone : 01579 364083



**Gas Services**

**NATURAL GAS - LPG - OIL**

**BOILER INSTALLATION**

**BOILER SERVICE & REPAIR**

**LONG WARRANTY FREE QUOTES**

**07859848288**

**[bagasservices@outlook.com](mailto:bagasservices@outlook.com)**





## Affordable Counselling

Caring, confidential,  
non-judgemental

- Increased confidence and self esteem
- Help to cope better at difficult times
- Improved relationships
- Clarify confused thoughts & feelings
- Assertiveness
- Personal insight
- Improved emotional health
- Available for youth and adults

**Isabelle McGarahan BA, PGCE**  
**Dip in Therapeutic Counselling,**  
**Accredited ACC, DBS cleared**  
**[www.im-counselling.org](http://www.im-counselling.org) email:**  
**[isabelle@im-counselling.org](mailto:isabelle@im-counselling.org)**  
**01579 344090/07857326229**



## P BRADLEY PLUMBING & HEATING

Email: [info@pbplumbingheating.co.uk](mailto:info@pbplumbingheating.co.uk)

Web: [www.pbplumbingheating.co.uk](http://www.pbplumbingheating.co.uk)

Facebook: @PDBradleyPlumbingandHeating

**NO JOB TOO BIG OR SMALL**

**24hr Emergency Call Out**

**Based in Liskeard**

**Call Today 07598956760**

## ***"The complete bathroom installation service"***

**New bathrooms fitted,  
floor and wall tiling specialist**

**General Plumbing including:**

- Bathroom makeovers
- Dripping taps and burst pipes
- Pump and cylinder changes
- Radiator upgrades and additions
- Specialist in Leadwork
- No job too small
- No Call out charge



# **W. Hale** *Plumbing*

**Friendly Service, Quality Work**

**NO VAT**

**City and Guilds Qualified  
established 1983**

**Call William Hale on**

**Tel: 01579 362132 Mobile: 07826 699719**





Kiln Dried Firewood  
Kindling & Firelighters  
Eco Heatlogs  
LPG Bottled Gas  
Patio, BBQ & Camping Gas  
Coal & Smokeless Fuel



**0800 8021 223**

**sales@loganslogs.co.uk**  
**www.loganslogs.co.uk**

## Heel 2 Toe Footcare

Tired Aching feet.

Corns, Hard skin, Verruca.

Fungal infected toe nails, or  
toe nails require cutting.

Diabetic feet also treated and  
regularly checked.

I can help to keep your feet  
looking and feeling good.

I am a trained Foot Health  
Practitioner to Diploma Level, fully  
insured & DBS checked.

I can do home visits via an  
appointment.

Call Penny: **07746 926146** for  
further information. **Please note**  
**new number May 2021.**

## MARK FITCH CHIMNEY SWEEP

- \* BRUSH & VACUUM
- \* CLEAN, RELIABLE SERVICE
- \* COVERING ALL S.E. CORNWALL
- \* DISCOUNT FOR MULTIPLE CHIMNEYS
- \* COWLS & GUARDS FITTED
- \* STOVES SERVICED



*Call  
Mark on:*

**01579 350762**  
**07773 462643**







**R&C**  
GROUNDWORKS  
& LANDSCAPES



Fencing  
Paths & Steps  
Turf & Astro turf  
Driveways  
Retaining walls  
Digger work  
Footings & foundations

Patios  
Rendering  
Decking

**And more**

Free no obligation quotes

**Call Rob on:**

**07518246666 or  
01579 641802**

Window Cleaner  
**Window Cleaner**

**Also any upvc cleaned**

**i.e. fascias, gutters, etc.**

**gutters cleared & unblocked**

**Please phone Rob**

**07709 053464**

Window Cleaner  
**Window Cleaner**

**Save Costly Energy!**



**SOLARTEC**

Windows &  
Conservatories Ltd

**'A' Rated WINDOWS & DOORS  
at BEST PRICES EVER!**



Professionally fitted and finished by us with a  
10 year ins. guarantee.  
In all colours

FENSA  
REGISTERED



**FACTORY SHOP  
SUPPLY ONLY**

For all your windows, doors, conservatories,  
fascia, trims, guttering and sealants

**7-10 DAY TURN AROUND ON WINDOWS,  
DOORS and CONSERVATORIES**

**TEL: 01579 343425**

**FAX: 01579 344500**

WEBSITE: [www.solartecwindows.co.uk](http://www.solartecwindows.co.uk)

EMAIL: [sales@solartecwindows.co.uk](mailto:sales@solartecwindows.co.uk)

**KEEPING JOBS IN CORNWALL**

**PMB Book Keeping**

**Friendly Book Keeping Services:**

**Purchase and Sales Ledger**

**Bank Reconciliations**

**VAT returns - Making Tax Digital**

**Self Assessment Tax Returns**

**And More**

**Fully Qualified, Insured and  
Licenced**

**T: 01579 683624**

**E: [pmboutsourcing@outlook.com](mailto:pmboutsourcing@outlook.com)**



# Group Travel

Day Trips & Coach Holidays

Enterprise Park, Midway Road, Bodmin, Cornwall PL31 2FQ Tel: 01208 77989

## Coach Excursions & Tours 2022

14th June	Agatha Christies Greenway House
18th June	Falmouth Sea Shanty & Regatta
29th June	Trebah Gds, Falmouth & St Mawes
8th - 9th July	Hampton Court & Kew Gardens
16th July	Broomhill Sculpture Gdns & Barnstaple
22nd July	Exeter Canal Cruise & Dartmoor Line
6th August	Taunton Flower Show
7th August	Magic Millions Festival of Eventing
27th - 28th August	Great Dorset Steam Fair
2nd - 4th September	Burghley Horse Trials
13th September	Widcombe Fair
17th- 21st September	Llandudno, North Wales
8th October	Horse of the Year Show, Birmingham
12th October	Goosey Fair, Tavistock
5th November	Bridgwater Carnival

Call: 01208 77989 for bookings and brochure  
website: [www.grouptravelcoachhire.co.uk](http://www.grouptravelcoachhire.co.uk)

## Bodmin MOT Centre

**01208 77989**

Garage Services  
MOT Testing Station  
Classes 4, 5 & 7  
Servicing & Repairs  
High Vehicles & Motorhomes  
Brake Test & Headlight Alignment  
Pre MOT Inspections  
Annual & Interim Vehicle Servicing  
~  
Commercial interim inspections available  
including brakes and lights  
~  
Helping you stay compliant

Bodmin MOT Centre  
at Group Travel  
Enterprise Park, Midway Road,  
Bodmin, Cornwall PL31 2FQ

## Martin Hoare – Local, Reliable, Competitive



WHEEL DIGGER FOR HIRE  
ALSO AVAILABE 'BREAKER'  
AND NEW CONCRETE  
'CRUSHER BUCKET'

ALL AT COMPETITIVE RATES

GROUND WORKS  
DRAINAGE  
NEW DRIVEWAYS  
SEPTIC TANKS &  
'SOAK AWAYS' INSTALLED



LASER LEVEL FOR HIRE  
QUOTES AVAILABLE



Phone 01579 363517

or

Mob 07863 291213





# INDEPENDENT FAMILY FUNERAL DIRECTORS

Supporting families to arrange funerals with sensitivity, dignity and care.

- Flexible, caring approach, tailor-making funerals to suit your needs and budget.
- Open and transparent, affordable pricing.
- Free bereavement support sessions, open to all in our community, first Wednesday of the month, 10am - 12pm.
- Prepayment Funeral Plans available

For details of our services and prices, visit our website.



**01579 362358 | [www.fdhallfunerals.co.uk](http://www.fdhallfunerals.co.uk)**



Avalennek, Caradon Town,  
Upton Cross, Liskeard  
Cornwall PL14 5AR  
Telephone 01579 363598  
Mobile 07901 538132  
[chrisrounsevell@tiscali.co.uk](mailto:chrisrounsevell@tiscali.co.uk)

## HOG ROAST EQUIPMENT HIRE AND MEAT SUPPLY

Hog Roasts For Those Special Occasions  
Self Catering or Hassle Free Service  
Everything done to your special requirements

**CHRIS ROUNSEVELL**  
**TRADITIONAL BUTCHER**



Come and visit our recently updated  
**Tile & Bathroom showroom** in PENSILVA

We offer a generous discount to all Pump Readers

Unit 24 Pensilva Ind Est, St Ive Road, Cornwall PL14 5RE 01579 362264

**CORNWALL TILE**  
CENTRE

Pensilva Showroom

Open	Mon - Fri	8.30am - 5pm
	Saturday	9.00am - 1pm

Tiles & Mosaics for:

Bathrooms & Kitchens Living Areas Conservatories  
Patios & External Areas Wet Rooms & Spas Swimming Pools  
& All Commercial Applications

 **atlas concorde**

[www.cornwalltile.com](http://www.cornwalltile.com)

**OPEN FOR RETAIL, TRADE & COMMERCIAL ENQUIRIES**





THE HOME OF WOOD

## BULK DISCOUNTS AVAILABLE ON OUR 30 YEAR SERVICE LIFE POSTS



**OUR GOLD TREATED STAKES AND POSTS ARE THE ONLY ONES AVAILABLE IN THE UK THAT ARE APPROVED BY THE WPA BENCHMARK FOR 30 YEAR SERVICE LIFE**

**For more  
informaton please  
contact one of our  
team**



**Bond Timber, Bake Sawmill, Trerulefoot, Saltash, Cornwall,**

**PL12 5BW**

**01503 240 308    [stacy@whbond.co.uk](mailto:stacy@whbond.co.uk)**



# Pensilva Stores

**Amazing Value**

**Premier**  
a great deal more from your local store

Mon-Sat. 7:00 AM. - 9:30 PM.  
Sunday 8.00 AM. - 9:30 PM.

- ✓ Fantastic Special Offers every month!!! (See store leaflets)
- ✓ Come and Check out our great deals on Wine, Beer and Spirits
- ✓ Local Produce: Homemade Butter and Clotted Cream, Meat from our local butcher
- ✓ Cornish Fresh Fruit and Vegetables
- ✓ Fresh Bread, Pasties and Cakes
- ✓ Take Away Coffee, tea and hot chocolate
- ✓ Newspapers and Magazines, Greeting Cards
- ✓ Paypoint, Lottery

**\* Free to use ATM \***

**\* Card Payment \***

**Friendly Staff + Service with a Smile !!!**

**Pensilva Stores is a family run business who have been serving local people and visitors for more than 21 years.**

Higher Road, Pensilva, Liskeard, Cornwall PL14 5NQ

Tel: 01579 362547

# MENDOLOGY

## Garage Door Specialist

- ☐ Repairs
- ☐ Servicing
- ☐ Installations

Out of hours service  
call Dave anytime 07974 442645


**MENDOLOGY** COMMERCIAL DOORS LTD  
www.mendologydoors.co.uk

**01579 363760**



# PensilvaCars

01579 363516

- ✓ MOTs Class 4
- ✓ Service
- ✓ Repair
- ✓ Tyres
- ✓ FREE Courtesy Car
- ✓ Car & Van Sales
- ✓ Diagnostics
- ✓ Air Conditioning
- ✓ 

**We have offered a supply, fit & balance of tyre service for 10 years at competitive prices.**

**Most of our tyres can be supplied the same day.**

**LOCAL RECOVERY £45.00**

**[www.pensilvacars.co.uk](http://www.pensilvacars.co.uk)**

**[pensilvacars@hotmail.co.uk](mailto:pensilvacars@hotmail.co.uk)**

We can service and repair your car to manufacturer specification, keeping your dealer warranty without main dealer expense.





# KEITH RICHARDS

## Motor Body Repair Specialists

A family run business with fully equipped & maintained workshops & a focus on  
Customer Care

- ♦ Motor Body Repair Specialist
- ♦ Mechanical Repairs
- ♦ Servicing to All Makes & Models
- ♦ Computer 4 Wheel Alignment
- ♦ 24 Hour Recovery Service
- ♦ Renovations & Re-sprays
- ♦ Member of RMI (Retail Motor Industry Federation)
- ♦ Latest Diagnostics (including specialists for VW, Audi, Seat,  
Skoda & Vauxhall)

With over 30 years' experience we aim to provide you with:- Value for Money -  
Friendly Service - Professional Approach - Expert Advice that you Can Trust  
(Visit our website for more details)

Pensilva Industrial Estate, St Ive Road, Pensilva, Liskeard, Cornwall PL14 5RE

Tel: 01579 362593

Email: [keith@keithrichardsmotorbody.co.uk](mailto:keith@keithrichardsmotorbody.co.uk)

Fax: 01579 363194

Website: [www.keithrichardsmotorbody.co.uk](http://www.keithrichardsmotorbody.co.uk)

Wm. Newham & Sons *Est. 1895*

Proprietor Robbie Savill AWCB

## CHIMNEY SWEEPS & BLACKSMITHS



CHIMNEY SWEEPING

BIRD GUARDS, COWLS & POTS FITTED

CCTV INSPECTIONS & SURVEYS

STACK REPAIRS & REBUILDS

RIGID STEEL SYSTEMS ERECTED

STAINLESS STEEL and PUMPED CONCRETE  
CHIMNEY LINING

STOVES SUPPLIED, INSTALLED & REPAIRED

FIREPLACE ALTERATIONS & RENOVATIONS

FULL RANGE OF FIREPLACE FURNITURE

made to order

**01579 347777**



### FOR ALL YOUR CELEBRATION NEEDS

Visit our shop: 12 Fore Street, Callington

Call us on 01579 384386

Find us on Facebook or visit our website:

**[www.victoriaeyton.co.uk](http://www.victoriaeyton.co.uk)**

- Helium Balloons - Balloon Arches -
- Bespoke Balloon Designs -
- Personalised Balloons - Partyware -
- Huge selection of greetings cards -
- Weddings, Parties and Corporate events catered for.

# J. J. Child

**Plumbing and heating engineer.**

**Oil appliance service, repair and breakdowns.**

**Over 30 years experience**

**Call John: 01579 362336 or 07837 921086**







# Pensilva & St Ive Post Office Service

**Pensilva:** Through the coffee shop on the 1<sup>st</sup> floor of Millennium House

**Tuesdays:** 9am to 1pm.

**Wednesdays:** 9am to 12 noon.

**Fridays:** 9am to 12 noon

**The Millennium House  
coffee shop is also open on  
these mornings.**

.....

**St Ive:** At St Ive Village Hall

**Wednesdays:** 10:30 to 11:30am

**Coincides with the St Ive  
Village Hall Coffee Morning**

## Saint Ive Parish tree-planting survey

Please let us know about any trees that you plant within the Parish. We will include them in our own survey and we will notify the Forest for Cornwall on your behalf, if appropriate.

email [posicrp@gmail.com](mailto:posicrp@gmail.com) or message us on Facebook

[www.facebook.com/posicrp](https://www.facebook.com/posicrp) or phone 01579 364016.

Pictures very welcome.

