

# THE PARISH PUMP



May 2022  
Edition 486



**The Newsletter for the Parish of St Ives**



The first Tregovenek “Introduction” event on 24th April.  
“Tregovenek,” a “place of hope” in troubled times.

## Disclaimer

The articles appearing in this magazine do not necessarily reflect the views of the Parish Council nor of the Parish Pump Editor.

## Parish Councillors Telephone List

Alan Moss (chair)	01579 362064	Ivor Vaughan (vice-chair)	07979 934604
James Bruce	07411 192645	Marlene Carr	01579 362919
Martin Corney	01579 382450	Sandra Doe	01579 363096
Rosemary Farley	01579 384810	Nigel Gisby	01579 363096
Ron Greenhough	01579 363096	Tony Hodson	07973 536964
Nigel Libby	07968 891814	Paul Mann	01579 363757
Craig Vaughnley	01579 364083		

## Meetings of St Ive Parish Council

**Meetings are now being held when possible. Please see the Parish Council website for meeting dates, agendas and minutes.**

**<http://st-ive-parishcouncil.gov.uk/minutes-agendas/>**



**Devon & Cornwall Police**  
Building safer communities together

 **101**

Minicom 18001 101

## Police Community Neighbourhood Office

Your Community Support Officer is PCSO Steve Edser 30173.

email: CIOSNBMLLST@devonandcornwall.pnn.police.uk

To report a crime call 101 or go to [www.devon-cornwall.police.uk](http://www.devon-cornwall.police.uk)

In an emergency call 999

## Contact details for St. Ive Parish Council and for Millennium House

Address for correspondence: Millennium House, Century Square, Pensilva PL14 5NF

General Parish matters should be raised initially with the Parish Clerk, Jenny Hoskin, who will present them to the Parish Council.

Telephone: 01579 363096, email: [stiveparish@btconnect.com](mailto:stiveparish@btconnect.com)

For accounts matters for the Parish and for Millennium House contact John Body, Finance Officer: 01579 362102, email: [millenniumhouseadmin@btconnect.com](mailto:millenniumhouseadmin@btconnect.com)

Millennium House enquiries and reservations: 01579 363096

email: [millenniumhouse@btconnect.com](mailto:millenniumhouse@btconnect.com).

On the web: Millennium House Website: [www.cornwallvenue.com](http://www.cornwallvenue.com)

Parish website: [st-ive-parishcouncil.gov.uk](http://st-ive-parishcouncil.gov.uk) Facebook: [facebook.com/stiveparishcouncil](https://facebook.com/stiveparishcouncil)

## PARISH PUMP ADVERTISING COSTS

The prices for advertising in the Parish Pump are as follows:

The below prices include VAT at 20%:

**Quarter page: £10:00 per month or £100:00 for 12 months.**

**Half Page: £20:00 per month or £200:00 for 12 months.**

**Full Page: £33:00 per month or £330:00 for 12 months.**

## Parish Pump Information and Contact Details

To contact the editor please email: [parishpump@btconnect.com](mailto:parishpump@btconnect.com)  
or phone the Parish office: **01579 363096**.

Hardcopy submissions by post or by hand to the Parish office, Millennium House, or Millennium House reception.

Softcopy submissions: By email to the editor in MS Word, MS Publisher, pdf, Tiff or jpeg. Please use A4 pages and minimum 16 point font as the Pump is initially produced in A4 size and reduced to an A5 booklet at the printing stage. If in doubt please contact the editor.

Bargain Corner free ads by email to the editor or drop off at the Parish Office.

Deadline for the Parish Pump is STRICTLY 15th of every month

## From the Editor

There's a lot about The Queen's platinum jubilee in this month's edition, including a 4 page pull-put section in the middle pages. Let's hope for magnificent weather for those few days, and for a really good attendance at the various events here over that weekend.

I was born a few years after the coronation, so I am easily old enough to remember the silver jubilee in 1977. It was my "finals" year, so I was a bit busy around June time. Even so, I can well remember the excitement in the country and the unbelievable weather we had! (Not ideal for studying, though.) A short few years later, I found myself working in an office next to Jubilee Gardens on London's south bank, which the Queen had opened on silver jubilee day. The event was commemorated by circular, silvery-steel plaques set in the paving; I must have walked, jogged and run over those plaques many hundreds of times in the ten years or so that I worked there.

The golden jubilee was in 2002, which was my last year of living and working in London, as the following Spring we moved here to Cornwall. I know that the queen visited Cornwall as part of both her silver and gold jubilee celebrations.

The diamond jubilee in 2012 I remember as more low-key, coming just a couple of months or so before the London Olympics. But who could forget the "Queen" arriving at the Olympic Stadium, with James Bond!

And this year? What will we remember about the platinum jubilee? I hope that it will be remembered as a great and fun celebration, perhaps the first for a while that we could all enjoy without having to worry too much about Covid. And for me personally? Well this month's Parish Pump marks a kind of anniversary for me too - my 100th edition as editor! As Her Majesty might say ... it has been a privilege! Keep well - Joe

### St Ive Village Hall

Gardening Club	1st Monday monthly 7:30pm	01579 382762
St Ive Snooker Club	Monday & Thursday 7:00pm	01579 382315 R Bunkum
Yoga	Tues 4:30-6.00 & 7:00-8:30pm	07947 785554
Post Office	Wednesday 10:30 - 11:30 am	
Coffee Morning	Wednesday 10:30 - 12:00	
Art Group	Fridays 11:00am - 4:00pm	07772 639942
Social Evening	Fridays from 7:30pm	01579 384810 Rosemary

**St Ive Village Hall is available for hire, £5.00 per hour. Includes use of the kitchen & electric (except wall heaters which are on a £1 coin meter). Ring Amanda Eveson on 01579 388782**

## **Chairman's Report May 2022**

On Friday 20th May between 09.30 – 11.30 there will be a chance to meet our PCSO Steve Edser. Steve and myself will be at the Coffee Shop to give you a chance to discuss any concerns you may have in the Parish. Come and have a chat.

The Parish Council Annual General Meeting (AGM) will be held on Monday 9th May at 7pm, and an Annual Parish Meeting on Monday 23rd May again at 7pm. This is a chance to meet members of the Parish Council. We can give you an update on the Parish Finances, YMCA and Millennium House.

Over the past few months, the Jubilee Committee members have been working hard planning many events for the Parish for this special weekend. I'd like to thank them for their commitment. Take a look at the flyers in this issue of the pump for more details.

Monday 9th May at 7pm Parish Council AGM

Monday 23rd May at 7pm Annual Parish Meeting

Alan Moss

## **Opening times for the Mel Bar at Millennium House**

Thursdays            5 - 11 pm.

Fridays                5.30 - 11 pm.

Saturdays            5 - 11 pm.

Also Tuesdays       5 - 11pm but only when the Function Room is in use.

These times may change depending upon footfall.





**2-5  
JUNE**



*Queen's*

**PLATINUM JUBILEE**  
**AT MILLENNIUM HOUSE, PENSILVA**

**THURSDAY**  
**2ND JUNE**

Children's Disco 4:30-6:30pm  
by Prensilva Preschool

**FRIDAY**  
**3RD JUNE**

Morning: Tabletop Safari 10-2pm around the village  
Afternoon: Children's Bingo  
Evening: Family barn dance with live Ceilidh band,  
bar & pasties

**SATURDAY**  
**4TH JUNE**

Jubilee Celebration Day! Including stalls, Wacky  
Wheelbarrows pageant, dog show, choir, FREE  
bouncy castle & activities

**SUNDAY**  
**5TH JUNE**

Big Jubilee Lunch with Live Music from  
Ice'n'Slice and Palm Springs

Enter the Garden in Bloom or the scarecrow competition (see entry forms in Pump)  
Get together with your neighbours to decorate your house, or street.

Enquiries to [parishjubilee619@gmail.com](mailto:parishjubilee619@gmail.com)

See centre pages for a 4-page pull-out guide to the festivities.  
Also individual posters for some of the above events. Ed.

## **Tregovenek - Exciting New Community Farm in Pensilva!**

We are a newly formed Community Benefit Society called Tregovenek (meaning Place of Hope). We are setting up a small community farm and gathering space near Pentiddy Community Woods, Pensilva. This will have the health and wellbeing of the local community, the land and its wildlife at its heart.

We would love for more people to get involved! We work in small groups, all connected to a core group. These groups currently cover community engagement, legal and governance, media and communications and ways of working. We specifically need support in business planning, finance, fundraising and communications. Don't expect boring meetings, we are purposefully exploring ways of working that keep us energised, supported and constantly learning. This is a new and different type of project!

We are working with other local groups, including the Parish of St Ive Community Resilience Project, the Growing Project and Pentiddy Woods. It's all about connecting what we have and strengthening connections for the future.

On the 21st/22nd May, we will be offering a free 'Introduction to Permaculture' course for local people who are interested in joining a new design team for the project or in creating their own projects. Permaculture is a design process ensuring that any projects, from food growing to building design, consider people and planet, creating a sustainable, fairer world for us all. This lively and participatory weekend will be taught by local Permaculturalist, Klaudia VanGool and held at Pentiddy Woods, an established permaculture project in Pensilva.

If you are interested in getting involved and possibly contributing to an existing working group, **there is an opportunity to join us on the land for an 'Introduction to Tregovenek' on either Sunday 24th April (1-3pm) or Friday 29th April (1-3pm).**

To book your place on the permaculture course or to let us know you would like to come to the Introduction to Tregovenek, please email [mail@tregovenek.org.uk](mailto:mail@tregovenek.org.uk) or call 01579 363775. We look forward to meeting you!

For further general information, please visit [www.tregovenek.org.uk](http://www.tregovenek.org.uk).

## **St Ive Methodist Chapel - announcement**

It is with deep sadness that at our Church Council meeting on Sat 5th March it was decided that we would start the process of closing the Chapel building as a place of worship after 162 Years.

It does not mean that the Methodist Church at St Ive is ceasing to meet, it just means that we will be looking at other options as to where we hold our Services in the future. The fact is that a building of this age takes a lot of upkeep and maintenance and with the weekly congregation being at present in single digits the cost of this is not only unfeasible but also unethical.

These Churches were built for a purpose in their day, which were mainly to do with people's lack of transport other than walking, so the Churches needed to be close to where the people lived. This is no longer the case and so the decline in weekly congregations has brought us to this point.

As and when solid plans come into being we will let you know where and when our Services will take place, In the meantime please keep an eye out for the upcoming celebrations that we are aiming to hold as we get ready to say goodbye to the building that has been home for so long, and move onto new things. In the meantime if you want to pop in and see what the Chapel looks like from the inside, please contact Keith on 01579 382334.

God bless

Keith Mutton

## **ST. IVE COMMUNITY SOCIAL EVENING**



## **VILLAGE HALL**




**FRIDAY NIGHTS 7.30PM**

**Funded by Contributions**



## Pensilva Film Club

We had a smaller audience for our last movie, *Tracks*, possibly due to subject matter, but those that did attend seemed to enjoy it. The movie, based on a true story, followed the “tracks” of a young Australian woman, who didn’t really feel she fitted into “normal” society and craved solitude, undertaking a solo expedition across the mid and Western Australian deserts. I really enjoy films charting personal achievement and this was no exception although, I have to confess, I found it a little slow-going at times. Saying that, her journey was one of relentless walking in the heat of the desert so I’m not quite sure how the portrayal could have been made any more “exciting”. It certainly gave the viewer a real sense of the fortitude, bravery and stamina needed for such a venture.



**Pensilva Film Club** (Part of C-Fylm, Creative Kernow)  
**Presents: At Millennium House, Pensilva**  
**Belfast**  
**20<sup>th</sup> May at 7pm for 7:30 start.**

Hopefully next month’s film will have a wider appeal. We are pleased to be able to present, on 20th May (and hot off the awards circuit) “Belfast”. This was written and directed by Kenneth Branagh and follows a young boy’s childhood in Belfast during “the troubles”. This multi-award winning movie’s cast is led by Dame Judi Dench which is reason enough to come along on the 20th. As usual doors open at 7pm with the film starting promptly at 7.30pm. New members are welcome at a charge of £6 with current members only £3. The Mel Bar will be open for drinks pre and post show. Hope to see you there.

Pensilva Film Club - In association with C-fylm, part of Creative Kernow

## TWELVE YEARS OF WILDLIFE WATCHING IN THE PARISH OF ST. IVE

Since moving to the Parish at the end of 2009, I have been photographing and recording the wildlife which I see at my home on the edge of Pensilva on a daily basis. This month I thought I would share some observations of one of our relatively newly arrived birds...

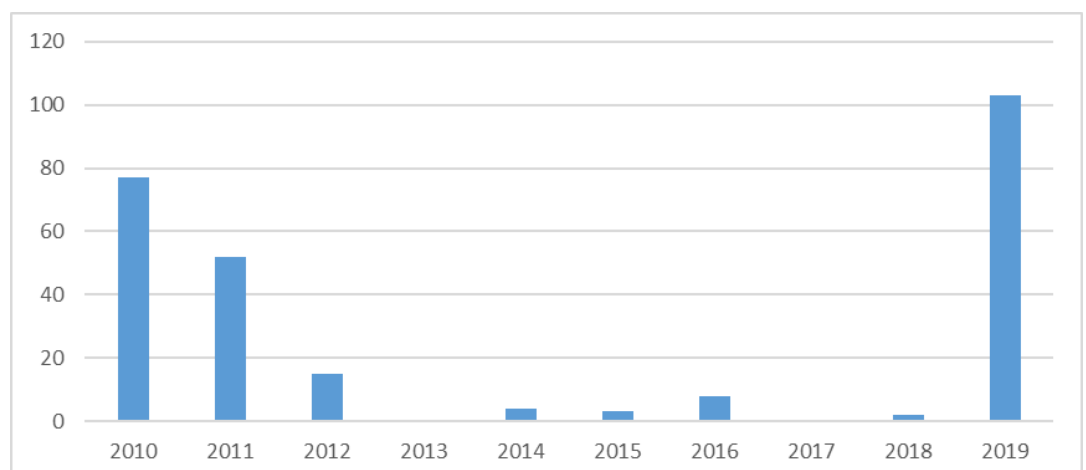
### THE COLLARED DOVE



The collared dove originates from Asia. Up until the 1930s, they had not been seen further west than Turkey and the Balkans. In the next 20 years they spread rapidly across Europe, arriving here in the 1950s, where they bred for the first time in Norfolk in 1955. However, this is not an example of human intervention, but natural colonisation. They have now spread all the way up to the Arctic Circle in Norway. Young birds have been known to travel 600km from where they were born, which does much to explain their recent rate of expansion. However, since 2005, their numbers have started to decline slowly, probably because of competition from wood pigeons, or possibly the disease trichomonosis.

As the chart below shows, they are an erratic visitor to our garden, being seen quite frequently foraging under our feeders for a while and then not being seen at all for a time - sometimes for up to a year. This is very strange, because I frequently see them about 150 metres from our house on my walk up to the village shop.

Total  
number of  
days  
sighted per  
year from  
2010-2019



Slightly smaller and daintier than their cousins, the wood pigeons, they have a partial collar round the back of the neck, (hence their name). They have a rather irritating and persistent call consisting of three even 'oos'. Collared Doves usually appear in pairs and are monogamous. They build a poorly constructed platform of twigs for a nest. When the eggs are laid, the female will incubate the eggs during the day, changing over with the male at dusk who will then do the night shift. Young collared doves do not have a collar. In 2011, we were privileged to watch the story of one young bird close up as it fell out of its poorly built nest prematurely and landed on the slope down to the house where we could watch it from inside without disturbing it. Here are some of the notes I made at the time:-

*March (2011)*

*8<sup>th</sup> - chick seen on lane - at first thought was injured, but then realised had fallen from nest. What I initially interpreted as an injured or deformed tail was just immature. Presses itself to the ground when predators such as cats come by, where it is well camouflaged. Survived with some help from us in moving the cat on!*

*9<sup>th</sup> - saw a parent come to it but not feed it.*

*-pair of doves landed on lane close to chick. It displayed, requesting food but presumably they were not the parents as they ignored it.*

*11<sup>th</sup> - fed by parent following begging behaviour.*

*12<sup>th</sup> - still on lane. Still has only a hint of a collar.*

*13<sup>th</sup> - starting to preen feathers. Being fed by parent(s). Getting stronger - flapped wings and got about 18" off ground.*

*14<sup>th</sup> - Moved just the other side of garden boundary. From location, must have taken a couple of short flights - though still basically grounded and being fed by parents.*

*Not seen again. Probably survived and gone as no signs of feathers etc.*



Next time you see a collared dove you will know what an amazing traveller and adaptable bird it is. Who knows where it may have been hatched!

HAPPY WILDLIFE WATCHING! HILARY



## **St Ive & District Gardening Club Report April 2022**



On Monday 4th April we visited the garden of a 14th century house at North Petherwin. This was our first visit of the year so we were looking forward to having a wander around a garden for some inspiration for the gardening season.

We were greeted by Caroline & Martha the dog who was very happy to welcome us!

Caroline explained that she has been at The Glebe for 15 years. When she arrived the garden was not so much a garden but a field with springs! The backdrop of the garden is the church. Caroline used the church as a feature of the garden as it provided a guide for the avenue of hornbeam trees. These trees liked the wet ground & have thrived well. In comparison, the apple orchard Caroline planted when she first arrived didn't like the wet ground or the rain which fell for the first two years so sadly those trees are no longer in the garden. Like the hornbeam, shrubs enjoy the spring filled ground so Caroline has planted these throughout the garden.

The garden is scattered with in-ground beds which can be walked around in any direction. On our visit, in order to see everything, it was necessary to weave around the beds. This meant we could view the garden from different angles, around each corner there was something new to see:

Double primroses peppered the beds with their beautifully intense colours, pink, purple, white. The stunning petals of the magnolia. My favourite parts of the garden were the, seasonal, topiary rabbits (see the photo) and a sunhouse which was centred in the middle of the garden (see the photo).

Caroline's self-confessed obsession is peonies. Over the hedge, in front of Caroline's pavilion are a set of large in-ground beds full of freshly planted peony plants. It is clear to see that when the peonies flower they are going to look fabulous.

To finish our visit we were treated, in the pavilion, to hot drinks & a selection of lovely homemade cakes.

Our May visit is to the Forgotten Gardens at Lew Trenchard:

Monday 2nd May meeting at St Ive park car park at 6:15pm.

Anyone can attend meetings, you don't have to be a member. If you see a topic one month that you're interested in, you can come along as a guest. Equally new members are always welcome



## Parish of St Ive Community Resilience Project

March was a busy month for us. We began on the 5th with a stall at St Ive Parish Church to show plans for the community garden and talk about what people would like to see there. It was fantastic to get such positive feedback, especially from young families. Later on in the month, volunteers planted over 350 hedging plants; they are small at the moment but in 2 or 3 years they will give the garden some useful wind protection and valuable habitat.

We have an exciting appointment to announce! Sian Bush, who lives in Pensilva, has joined the Parish team as Project Co-ordinator for our year-long Lottery Funded programme of events and activities. The aim of this appointment is to support the local community and create a resilience plan for the parish, setting a pathway for a stronger and more connected community.

Sian is a local artist, mother and environmental enthusiast from Minions, who is as passionate about the community as she is about her Arts. She runs local family-based activities, which focus on being accessible for all and making the most of our local environment. Alongside this, she teaches Art & Crafts, produces and sells her work, runs workshops, and is part of the Liskeard Cattle Market Makers Project; all with sustainability in mind. She is excited to take on this new role. You will hear more from Sian in the months ahead.

At the end of March we had an amazing day at Millennium House in Pensilva. Some 20 people from across the parish and neighbouring areas came



together to develop new creative tools that can help projects, groups, communities and organisations to reach and engage people more effectively.

The Art of Invitation workshop was run by Ruth Ben Tovim, a professional artist who uses the transformational power of the arts

to run creative and engaging events. We then enjoyed lunch, a wonderful feast of local food, celebrating the

best our area can produce. As well as new skills and connections the event has proved really useful in generating ideas and offers for working together.



### Forthcoming Events

**May:** Pentiddy Permaculture Course. **June:** Jubilee Celebrations.

**June:** St Ive Community Garden's Big Picnic.

**Follow Us!!!** Watch our Facebook @posicrp and Instagram pages posi.crp for news of upcoming trips to inspiring places, and local events for all the family.

## Pensilva WI March report

### Pensilva WI April report

The ladies of Pensilva WI along with members of St.Neot and Liskeard W.I.'s and WI Advisor Jane Mills were on their travels this month, but not one single mile was travelled. How can that be you might ask? Well it was because Alison Willis, Secretary of Pensilva WI was taking them on a trip around China from Beijing to Shanghai stopping off at points of interest along the way. The main ones of course were the Terracotta Army and the Great Wall of China. It was good to go on such a long journey without even leaving the comfort of your seat.



Following the talk everybody tucked into the amazing bring and share supper and there wasn't much of the spread left at the end of the evening.

Birthdays this month were Trish Thomas, Sue Turpin and Sue Hill who all received a birthday card and posy along with a resounding rendition of Happy Birthday.

Competition winners were 'Lemon Drizzle cake' 1st Cherry Woodhouse, 2nd Irene Elliott and 3rd Sue Hill. The 'decorated egg' 1st Alison Willis, 2nd Verna Dawe and 3rd Jenny Rendle.

May's meeting will be held at Millennium House Pensilva on Wednesday 11th when we will be doing yoga with Carolyn Harris. Competitions are Flower of the month and 'a relaxing verse'. All visitors will be made most welcome.

## Millennium House Community Transport

**Do you need transport to and from the doctor or hospital?**

Millennium House Community Transport's aim is to connect local communities and reduce social isolation.



If you need transport to Hospital, doctors or vaccination and have mobility issues, or are unable to drive to your appointment, please contact Millennium House on:

**01579 362919 or 01579 363096** and we will try to help.

If you would like to volunteer as a driver please contact Millennium House on **01579 363096**.

### **Supporting Guiding & Scouting Activities in Pensilva 200 CLUB Draw Results for March 2022**

<b>1st No. 63 Mr C Davies</b>	<b>2nd No. 129 Mrs K Hocking</b>	<b>3rd No. 195 Mrs P Doney</b>
-----------------------------------	--------------------------------------	------------------------------------

**Thank you for your support**

UK Greendead is a company built, owned, and run by family and friends ensuring customers and their homes receive a personalised service with care and integrity at the heart of all we do.

Our aim is to improve people's quality of life and comfort in their own homes by reducing their energy consumption, whilst helping to stabilize our fragile planet. Much of our work comes from referrals from satisfied customers to friends and family, and we take great pride in the service that we provide.

UK Greendead is an independent eco-surveying company. We look at all aspects of residential properties looking to improve their carbon footprint and reduce their energy emissions, assisting the government with the mammoth task of bringing all greenhouse gas emissions to net-zero by 2050, whilst avoiding any costs to our customers.

The core of our work is to utilise government ECO3 funding (and soon ECO4 once this is released by the government) to provide free fully funded energy-saving measures to you.

Once we identify possible improvements we will guide you through the funding process from the initial survey, to placing your work with a government-approved national award-winning installation company, to improve your property's energy efficiency, yet not costing you a penny.

Free options available include the following:

- Cavity Wall Insulation (Bonded bead insulation is used NOT blown mineral fibre that is unsuitable for Cornwall – Fully funded )
- External Wall Insulation (solid builds – Fully funded)
- Internal Insulation inc plaster boarding & skimmed finish (solid builds - Fully funded)
- Loft Insulation up to 270mm (Fully funded)
- First Time Heating Systems (Fully funded)
- Electric Heating Upgrades (Fully funded)
- Mains Gas Boiler Replacement (Funded with possible contribution on a case by case basis, boilers will be checked for eligibility during your survey/enquiry.)



## **REDUCE YOUR BILLS AND WARM YOUR HOME.**

All the insulation work we provided comes at no cost to yourself (in fact you have already paid for this through your energy bills) and will come with a 25-year guarantee backed by the governing body of insulation CIGA.

It's estimated that 25% of all heat loss from an uninsulated home is through the roof which makes insulating the roof space one of the most cost-effective solutions. It can save you around £250 a year.

Cavity Wall Insulation with bonded beads is a quick, hassle-free way of insulating your home. 45% of a property's heat can escape through cavity walls and an average property will save £300 a year with cavity insulation.

If your house was built before 1919, it's likely that it was built with solid walls. Twice as much heat escapes from solid walls than cavity walls, so internally or externally insulating solid walls can considerably cut your heating bills – you could have an additional £450 per year in your pocket.

Upgrading your heating to a more modern and energy efficient system or having a first time heating system installed reduces both your energy consumption and bills. Our A-rated boilers are able to save you up to £350 annually, as heating accounts for approximately 60% of annual energy costs.

**If we CAN help  
you, we WILL!!  
Call John your  
local parish  
surveyor today:**



**07462 450184**

We use only the highest quality  
BBA products and we're a Green  
Deal approved installer PAS2030.



UK Greenddeal work within the Ofgem regulated ECO scheme, as well as partnering with numerous local authorities to offer you free\* insulation measures via your local authorities LA Flex Scheme.  
\* Subject to survey - Terms & Conditions apply.

<http://ukgreenddeal.org.uk>



## TAPS ARE NOW MOBILE

On the 31st March we gave our first presentation to a group of seventeen veterans' who are members of Battling-On based at Meryhue Farm St Ive. There was a good response with some members going to seek out a PSA test.

Now in receipt of our Gazebo we had a trial run of putting it up in a member's field at hatches Farm, as a first attempt it went remarkably well as shown below luckily the weather was on our side. Two events we are now booked into are:

**3rd June at Upton Cross Jubilee Field**

**4th June Pensilva Millennium House**



If you are involved in running a local show or event and would like our presence, or for us to give a talk to your group, please let us know through one of the contact avenues below.

If you or someone close to you has just been diagnosed and would like to chat with someone who is already living well with prostate cancer diagnosis give us a call we are always willing to listen and give support where we can.

**Website:**<https://www.tamarareaprostatesupport.org>

**Email:**[tapsinfo555@gmail.com](mailto:tapsinfo555@gmail.com)

**Paul Mansell 01822 832179    Harry Lawson 01579 383258**

**John Stewart 01822 833343    Stephen Williams 07735 380883**

# CALLINGTON TOWN MARKET

**1st May 2022**

**Come and Support Your Local Traders**

**10.00am until 2.00pm**

**Pitches start from only £10 each!**

**Pannier Market, Callington**

Car parking is **FREE** in all car parks on Sundays

Access to the market can be gained from Fore Street (between Spar and John Smith's Tyres) or through the Town Hall

**For more information, or if you are a trader wanting to book a pitch, please call 01579 384039**

**or email [market@callington-tc.gov.uk](mailto:market@callington-tc.gov.uk)**

**Future 2022 Markets held on - 7th Aug, 4th Sept, 2nd Oct, 6th Nov, 4th Dec**



**T. Tribute**  
**K. Kids and**  
**Y. Youth**

**Sundays**

**1<sup>st</sup> May**

**15<sup>th</sup> May**

**29<sup>th</sup> May**

**The  
Tribute  
Cluster  
of  
Churches**



**Primary aged kids:**

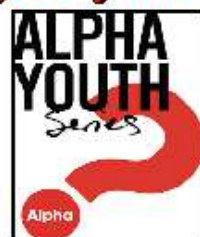
**4.30 - 6.00 pm**

**Secondary aged youth:**

**6.00**

**to**

**7.00 pm**



**at Menheniot Parish Church**

To book a place contact: [revbeccabell@gmail.com](mailto:revbeccabell@gmail.com)

**St John's Church ~ Pensilva**  
**COMMUNITY LUNCH**



**BAKED  
POTATOES**  
**choice of  
toppings**

**Thursday 5<sup>th</sup> May ~ 12.00 to 1.30 pm**

**Bring & Buy Stall**

**Donations in aid of church funds**



# Teatime Church



For children and their families

Sunday 8<sup>th</sup> May

3.45pm

St John's Church  
Pensilva

Sharing a Bible Story

Playing Games

Singing and Praying Together

Eating Tea



Teatime Church will be held on the 2nd Sunday of each month  
at St John's Church

For more information contact: Rev Becca Bell  
Rev Li Selman

[revbeccabell@gmail.com](mailto:revbeccabell@gmail.com)  
[revliselman@icloud.com](mailto:revliselman@icloud.com)



**christian  
aid**

Donations for  
**ChristianAid**  
We believe in life before death

# Bluebell Walk

**Monday 16<sup>th</sup> May**  
Leaving at 6.30 pm from  
Penharget Cottage  
Pensilva  
PL14 5RJ



**Pasty Supper**  
in the garden  
Raffle and Bring & Buy

## Good Grief Cafe

**St John's Church**

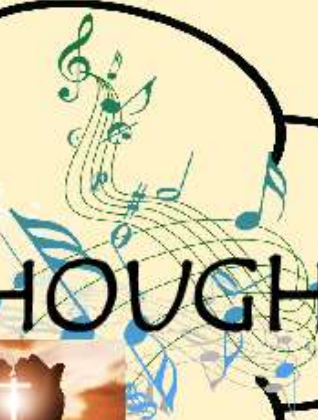
There is no right or wrong way to grieve. We aim to bring the bereaved community together, with time to share experiences and to bring comfort to one another in what can be an isolating and lonely time. There is no agenda, just free tea, cake, chat and friendship. All are welcome, and please use this as an opportunity to invite someone.

*Wednesday 18<sup>th</sup> May      3.00 to 5.00 pm*  
*Contact Geoff on 01579 362698*





# FOOD for THOUGHT



SUNDAY

22<sup>nd</sup>

May

5.00 PM

St John's Church  
Pensilva

A time of fellowship  
and informal worship  
with a shared afternoon tea



For further information  
& to arrange transport:  
Geoff 01579 362698

## PENSILVA MEMORY CAFE

*If you have memory  
problems or you are  
a carer for somebody  
who does, and would  
like to meet others  
who understand  
your situation,  
then join us at  
St John's Church*



Thursday 26<sup>th</sup> May

2.00 to 4.00 pm

Contact Geoff on 01579 362698





# St Ive & District Gardening Club



## Plant sale

Saturday 28<sup>th</sup> May 2022

1:30pm

St Ive Village Hall (PL14 3LZ)

Get your homegrown seedlings, cuttings, vegetable  
plants, flowering plants and...  
...refreshments





**Tuesday  
31<sup>st</sup>  
May**

**St John's  
Church  
Pensilva  
on the  
last Tuesday  
of the month**

**2.00**

**to**

**4.00 pm**

**Contact Kathleen  
01579 363686**



**Pentecost Sunday  
5<sup>th</sup> June**



**St John's Church  
Pensilva**

**11.00 am**

**Come Holy Spirit  
Come .....**



---

# **TABLETOP** **SAFARI**



## **FRIDAY** **3RD JUNE**

**A WALK-AROUND TABLETOP SALE,  
10AM-2PM AROUND THE VILLAGE -  
MAP AVAILABLE CLOSER THE TIME**

---

**SELLERS, CONTACT:**  
**SARAH - SM.PENSILVA@GMAIL.COM**  
**OR JUDY - 01579 208836**

---





FRIDAY  
JUNE  
3rd

# BARN DANCE

FEATURING SPLANN  
CEILIDH BAND

JUNE 3RD 2022 - DOORS OPEN 7:30PM

TICKETS £5 ADULT / £2.50 CHILD  
ON THE DOOR OR IN ADVANCE FROM  
MILLENNIUM HOUSE RECEPTION  
01579 363096

PASTIES WILL BE AVAILABLE!

MILLENNIUM HOUSE, PRINCESS ROAD,  
PENSILVA, PL14-5NF  
[millenniumhouse.org.uk](http://millenniumhouse.org.uk)





# **PENSILVA IN BLOOM**

**QUEEN'S PLATINUM JUBILEE**

**PRIZES FOR:** BEST GARDEN  
BEST HANGING BASKET  
BEST TROUGH/TUB DISPLAY

**Must be on display from the 28th May to end of Jubilee weekend. Entry forms in the Parish Pump or MH reception.**

**Judging will take place during the week commencing Monday 30th May, and the winner will be announced at the Jubilee Lunch.  
The Judges' decision is final.**



QUEEN ELIZABETH II  
PLATINUM JUBILEE  
CELEBRATIONS  
St Ive Parish 2022



PULL OUT ITINERARY

## **THURSDAY 2<sup>ND</sup> JUNE**

Children's Disco hosted by Pensilva Pre-School

At Millennium House 4.30pm – 6.30pm

## **FRIDAY 3<sup>RD</sup> JUNE**

**TABLE TOP TRAIL** 10am – 2pm

MAP of trail will be available showing where tables are in the village, some table will be set up on the front lawn of MH.

**CHILDREN'S BINGO** 2.30pm AT MILLENNIUM HOUSE

All children to be accompanied by an adult please.

**FAMILY BARN DANCE** (SPLANN CEILIDH BAND) 7.30pm - LATE

Tickets available at Millennium House Reception:

Adults £5.00, Children £2.50

Pasties available on the night.

**SATURDAY 4<sup>TH</sup> JUNE JUBILEE GALA DAY**  
**from 12 noon**

**To include:**

**WACKY WHEELBARROW AND WHEELS PAGEANT –**

assemble at 12 noon in the carpark for a parade around the football field. Individuals (fancy dress optional) push decorated Wheelbarrows/buggies etc. round the course. We are aiming for 70 to match 70 years of Queen's reign.

**BOUNCING CRAZY INFLATABLES** to entertain the children

**MUSICAL ENTERTAINMENT**

**DOG SHOW**

**STALLS**

**REFRESHMENTS** available

The Millennium House Coffee Shop will be open

## **SUNDAY 5<sup>TH</sup> JUNE JUBILEE GALA DAY**

### **Starting at 12 noon**

Red, White and Blue is the theme, 'Royal' Fancy Dress optional with a 'Decorated Crown' competition.

Some tables and chairs will be available, or bring your own, but if you prefer, picnic on the field.

Decorate your Tables with flags / bunting etc

**The car park will be out of action.**

Musical Entertainment will be provided from 12.15 to 3pm

The Millennium House Coffee Shop will be open



## PENSILVA IN BLOOM ENTRY FORM

**Entry piece must be on display from 28th May to end of Jubilee.  
Return completed form to MH reception or coffee shop.**

Judging will take place during the week commencing Monday 30th May, and the winner will be announced at the Jubilee Lunch. The Judges' decision is final.

Entry Category (multiple allowed):

☐ Garden    ☐ Hanging Basket    ☐ Tub / Trough

Name: \_\_\_\_\_

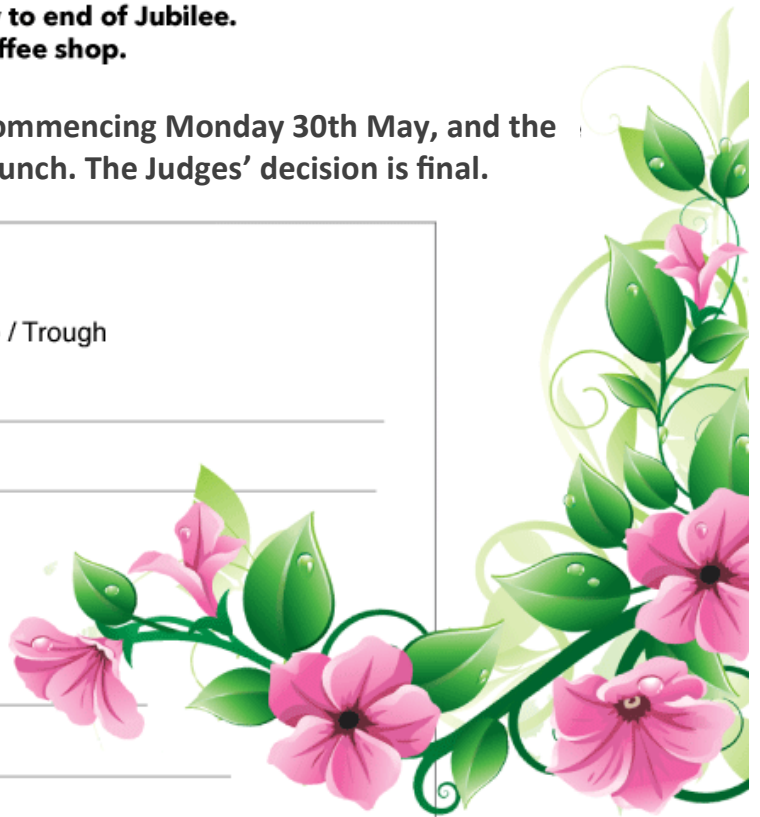
Address: \_\_\_\_\_

Postcode: \_\_\_\_\_ - \_\_\_\_\_

Telephone: \_\_\_\_\_

Visiting notes: \_\_\_\_\_

\_\_\_\_\_



## PENSILVA CARNIVAL SCARECROW COMPETITION ENTRY FORM

**Scarecrow must be on display from 29th May to end of Jubilee Weekend.  
Please return entry form to MH house reception before 27th May.**

Photos will be displayed at Millennium House reception during Jubilee Weekend for public to judge.

Name: \_\_\_\_\_

Address: \_\_\_\_\_

\_\_\_\_\_

Postcode: \_\_\_\_\_ - \_\_\_\_\_

Telephone: \_\_\_\_\_

Email: \_\_\_\_\_



## Gaming for Citizens Advice Cornwall

Gaming for Citizens Advice Cornwall is a challenge to stream yourself playing games and raising money which will help Citizens Advice to continue to provide free advice to everyone who needs it. You can play any game you want and stream on any platform you choose as long as it is age appropriate, although we would prefer games that do not promote gambling or anything that encourages people to get in to debt.

All you need to do is set up your stream and a Just Giving fundraiser and start playing. If you can't take part during our gaming weekend 14<sup>th</sup> and 15<sup>th</sup> May 2022, feel free to take part at a time convenient to you.

If you chose to set yourself a fundraising target, these figures may help you decide what you'd like your target to be:

**£50** could help fund a one to one training session on how to manage your bills.

**£150** could pay for our phone system for a month, enabling us to talk to clients.

**£600** could pay for a laptop for one of our team.

**£1000** could pay for our Text service for clients for a year.

### How do I take Part?

Visit Just Giving and set up a Gaming Fundraiser or follow this link <https://bit.ly/cabgaming>

Decide what game you want to play to stream

Pick a streaming channel such as Twitch

You will also need broadcasting software

Connect to Livestream fundraising on Just Giving

For a full how to visit <https://gaming.justgiving.com/about>

Please also take a look at <https://www.fundraisingregulator.org.uk/more-from-us/resources/online-fundraising-advice-and-guidance-public>

### About Citizens Advice Cornwall

Citizens Advice Cornwall is a charity providing free, independent and confidential advice on a wide range of subjects for everyone in the community. Our vital services include advice on benefits, debt, housing, relationship issues, employment and redundancy, consumer, legal issues and more.

Our services are available at our offices, online, on the phone or by text ensuring we are accessible for everyone who needs us.

Last year we helped almost 9,000 people in Cornwall and the Isles of Scilly writing-off debt worth a total of £1.8 million and gaining income worth £5.3 million.







# THE BIG SOUTH WEST cream tea



children's hospice  
SOUTH WEST

Raising money  
for local  
families one  
scone at a time

Host your own  
Cream Tea to help  
raise vital funds  
for children and  
young people living  
with life-limiting  
conditions.



Register for your  
free fundraising pack  
[www.chsw.org.uk/creamtea](http://www.chsw.org.uk/creamtea)



Making the most of short and precious lives across the South West  
Registered Charity No. 1003314



Sponsored by:



children's hospice  
SOUTH WEST

# rainbow RUN

It's back!  
The brightest fun  
run for everyone

Saturday 18 June 2022 ☺ RAF St Mawgan, Newquay  
Visit [www.chsw.org.uk/rainbow](http://www.chsw.org.uk/rainbow) to sign up

Register early for discounted tickets

You can also take part virtually!



Making the most of short and precious lives across the South West  
Registered Charity No. 1003314



# **St Ive Methodist Chapel**

## ***Services for May 2022***

<b>Sun 1<sup>st</sup> May</b>	3 pm	Rev Jonathan Budd with Communion
<b>Sun 8<sup>th</sup> May</b>	3 pm	Mrs Marguerite Smiith
<b>Sun 15<sup>th</sup> May</b>	11.15am	United Service at St Ive Church
	6 pm	Green Shoots United Service at Blunts MC led by Mrs Helen Burke & Mrs Linda Eastlake
<b>Sun 22<sup>nd</sup> May</b>	3 pm	Mr Brian Weslake
<b>Sun 29<sup>th</sup> May</b>	3 pm	Mrs Fiona Budd

Chattermakers craft and chat group, fortnightly in the Chapel guild room from 7:30pm. All welcome, crafty or not. Please contact Kathryn on 01579 382334 for details.

## **ST JOHN'S CHURCH, PENSILVA**

A united congregation of the Church of England & the Methodist Church

### ***Services for May 2022***

Sunday	1 <sup>st</sup>	10.00 am	Circuit service at Dobwalls United Church
Sunday	8 <sup>th</sup>	11.00 am	Café Church Geoff Cox & Carol Morse
Sunday	15 <sup>th</sup>	11.00 am	Rev Becca Bell
Sunday	22 <sup>nd</sup>	11.00 am	Mr Norman Rowe
		5.00 pm	Food for Thought
Sunday	29 <sup>th</sup>	10.30 am	Cluster service at Quethiock Parish Church
<b>Thursdays</b>		10.00 am	Morning Prayer Fellowship

### ***MAY EVENTS*** Please see posters on other pages for full details

Thursday	5 <sup>th</sup>	12 noon - 1.30 pm	Baked Potato Lunch
Sunday	8 <sup>th</sup>	3.45 - 5.00 pm	Tea Time Church for children & families
Monday	16 <sup>th</sup>	6.30 pm	Bluebell walk for Christian Aid
Wednesday	18 <sup>th</sup>	3.00 - 5.00 pm	Good Grief Café
Thursday	26 <sup>th</sup>	2.00 - 4.00 pm	Memory Café
Tuesday	31 <sup>st</sup>	2.00 - 4.00 pm	Knit & Natter

*For further details of the services and events at St John's, or if you know of any illness or need in the village, please call Geoff, 362698 or Frances, 363718*



# Millennium House Coffee Shop Opening Hours

We are open Tuesdays, Wednesdays and Fridays, 9am to 1pm  
(to coincide with Post Office days).

Our intention is to open more days and for more hours as soon as Covid regulations allow.

Covid precautions are in place at all times, providing a safe environment for our customers.

## *All Being Well*

We are still open for three mornings a week. A maximum of six members can now attend at one time.

### Opening hours:

Monday, Wednesday and Saturday, 9am to 1pm.

Maximum six members at a time for each of three slots within each session: 9:00 to 10:20, 10:20 to 11:40 and 11:40 to 13:00

### **Prior booking is essential**

To book yourself in or for any enquiries, call in at the gym or telephone on **01579 363890**, during the opening hours listed above.

**22 years working in our local community to improve health, fitness and well being.**

# Badminton has restarted at Millennium House

Come and join our relaxed and friendly group.

**Mon & Tue 7:30 - 9:30pm**

For further info phone Nigel or Carol on 01579 363594 or 07885 798370

## **PENSILVA VILLAGE HALL**

**We are now open and back in business!**

Anyone wishing to book the hall for meetings, birthday parties or fundraisers, please contact Peter or Jackie Browning on **01579 363212** or email **peterpensilva@gmail.com**

Please note that as well as hall rent there is a coin meter for



## **MOBILE LIBRARY**



**The County Mobile Library** visits our area every four weeks, always on a Friday. You can now browse the shelves again, but you can still pre-order books if you prefer.

Next visits: **May 6, May 27 and July 1.**  
(The last two dates have been changed due to the Jubilee weekend.)

Stops at The Victoria Inn, Pensilva from 10.25 to 10.45am; and Quethiock bus stop from 11.00 to 11.20am.



## **Struggling with Sight Loss?**

iSight Cornwall offers practical help to people living with sight loss in Cornwall including:

Low Vision: Advice for low vision aids

Assistive Technology: Advice on products

Benefits Advice: Assistance to claim entitlements

Equipment Demonstration: Advice on gadgets

Social Clubs & Activities: Links to clubs & activities in the county

For more details Telephone 01872 261110 or visit

[www.isightcornwall.org.uk](http://www.isightcornwall.org.uk)

# MILLENNIUM HOUSE

COMMUNITY CENTRE, AND DYNAMIC EVENT  
VENUE IN THE HEART OF EAST CORNWALL



#### Conferencing

We have four meeting rooms for all your corporate needs.



#### Function Room

For parties, discos, or just larger events; with adjoining kitchen and bar.

### Our Facilities

#### Sports Hall

For sports or larger events requiring a stage, the sports hall is our biggest venue.



#### Coffee Shop

Providing tea, coffee and cake. And for something stronger, there's the Mel, a licensed bar.



**Enquire today:**  
**01579 363096**

[www.millenniumhouse.org.uk](http://www.millenniumhouse.org.uk)  
PRINCESS ROAD, PENSILVA, PL14 5NF

## What Do We Do?

From wedding to wakes, kids or adults, corporate or community, we can host and cater your event. If you have an idea that's not covered here, get in touch and see if we're the right venue for you.

#### We're also home to:

- ✓ The Mel bar
- ✓ All Being Well Fitness Centre
- ✓ Post Office
- ✓ Sunflower Park kids playground
- ✓ Extensive playing fields
- ✓ Community Library

# Bargain Corner Free Ads up to £50

Ads are free for items up to £50. £5 charge for items over £50. Please leave a note at Millennium House reception, ring the Parish Office on **01579 363096**, or email **parishpump@btconnect.com**.

**\*\*\* Please let us know when your item has sold \*\*\***

Black Beko **fridge freezer** with water dispenser, excellent condition no damages etc. **£50**.

**Motorbike jacket (ladies)** Raven, black with pink details on it, size 12. VGC no damage or tears etc. **£20**.

Ladies Rocketdog wedge **flipflops** black with red and mixed colour beads on material, size 5. still in box as new paid **£10**.

**Upton Cross/Minions area**  
**07368 528398**.

Windows 10 Computer Tower, 19" Dell monitor, Mouse & Keyboard, all for **£50**. All in full working order. **07483 832642**.

Wood and cast iron **Patio Set**. 2 chairs, bench seat and table. Buyer collects. **£45**  
**01579 363626**.

**Ladies Superdry Jacket**. Size Med. Good condition. **£15**. **01579 346982**.

Canon IP2700 **Printer**. **£20**  
**Computer screen** 19" **£20**.  
Epson Perfection v350 **Scanner** Photo **£20**  
Sony Revia 42" **TV**. **£45**.  
All in working order. **01579 363200**

**2 short legged wetsuits**. 1 x 38" chest and 1 x 42" chest. Used once. As new. **£20 each**. **01579 362128**.

**Long handled garden fork** in VGC. Ideal to prevent back strain when digging or removing shrubs. **£15**. Collection Only,  
**2 electric drills** in working order with chuck keys **£15** for the two.

Brand New **Vinyl Flooring** for kitchens, bathrooms or hallways 13ft long x 2ft 11 inches wide. Colour light to mid grey. **£25**.

Early 19C / late 18C **cast iron fireplace faceplate** in GC, 36" high x 24" wide. Ideal as a fire faceplate or ornament. **£35**.

Six coils of industrial steel cable now surplus to requirements **£35** the lot.  
**01579 384658** (Safe Distancing if reqd.)

Set of 3 **suitcases**, red, vgc, Antler, **£40** ono. **07770 747353**. Pensilva area

**Please let us know when  
your item has sold**



# VICTORIA INN

The Cross, Pensilva. Tel: 01579 363933

---

## Opening Hours

Mon & Tues: Closed  
Wednesday: Lunchtime: Carvery from 12-2pm (see below)  
Evenings: 5pm to 9pm  
Friday: 5pm to 11pm  
Saturday: 2pm to 11pm  
Sunday: 12 noon to 6pm  
Times may vary when we have functions / live music.

---

## Meals on Wheels Service

Wednesday to Sunday (varied menu)  
Please give us a call if this may be of interest to you  
or if someone that you know may need our help.

---

## Our full menu is also available for delivery or to eat in.

Wednesday Evening - Homemade Pie Night (varies weekly)

Also includes a dessert. **£9.95**

Please check our weekly 'Specials'

Thursday Evening - Curry Night (Eat in or Takeaway) **£6.00**

Friday & Saturday Evening - Fish, Chips & Peas Special

Small **£5.95**, Large **£7.95**. Add a dessert for **£1.00**

Sunday Carvery 12noon to 3pm **£9.50** (Collection, Delivery or Eat in)

---

## Wednesday Lunch

This will be on the first Wednesday of each month. More will be added if  
necessary. April 6th 12-2pm.

Please phone 01579 363933 to book.

Find us online:  
[fresh\\_prop.co.uk](http://fresh_prop.co.uk)



Top quality carpet, upholstery & hard floor  
cleaning services based in Callington

Long-established cleaning professional

Domestic & commercial

NCCA qualified & member

Steam cleaning & dry carpet cleaning

Tile & grout + natural stone clean & seal

Vinyl & LVT including Amtico & Karndean

Call 0800 3893393 or 07905 188459

Or email [nevil\\_fresh@msn.com](mailto:nevil_fresh@msn.com)

## TRADITIONAL STONE SERVICES

CLASSIC & TIMELESS  
STONE MASONRY  
AND LETTERING

MEMORIAL CLEANING

COMMISSIONS TAKEN

**01579 363693**

OR

**07507 782282**



Domestic Electrical  
Property Maintenance  
Interior & Exterior Work  
Carpentry :: Decking  
Kitchens :: Bathrooms  
Wall & Floor Tiling  
General Plumbing

**MCCARTHY PROPERTY MAINTENANCE**

**Electrical Safety  
Register**

incorporating  
ELECTSA  ECA  
Certification Ltd

HIGHLY REGARDED LOCAL BUILDER  
COMPETITIVELY PRICED  
COVERING THE SOUTH WEST

Contact Dominic

07968 599 675

01579 362 945

[info@mccarthypropertymaintenance.co.uk](mailto:info@mccarthypropertymaintenance.co.uk)

[www.mccarthypropertymaintenance.co.uk](http://www.mccarthypropertymaintenance.co.uk)



Maintaining and preserving our  
countryside for the benefit of all

Dry Stone Walls

Cobblestoning

Stone faced walls

Hedgelaying/steeping

Land management

All aspects of Landscaping

Mobile: 07539 296799 or

Email: [info@just-in-stone.co.uk](mailto:info@just-in-stone.co.uk)

## Naomi's Footcare Service

I provide a personal toenail-cutting service within the comfort of your own home.

To include removal of calluses, corns, hard skin, and reduction in thickening nails.

- ✓ Trained foot health practitioner.
- ✓ Fully insured
- ✓ DBS checked.

naomiturner84@gmail.com

07809 690385

## **Debbie Hicks - Counselling and Psychotherapy**

*Caring, confidential counselling for all.*

*I work in a therapeutic relationship to help you understand yourself better.*

*I offer a warm, approachable, relaxed environment for you to untangle your thoughts and emotions.*

**www.debbiehickscounselling.co.uk**

**Email: debbiehicks10@gmail.com**

**07851 133782**

*More info on my website or by contacting me.*



## **JP'S FRESH HOT FOODS**

**HOME COOKED SPECIALS AND DESSERTS**

**INCLUDING REGULAR TAKEAWAY MENU**

**THURSDAYS - 4PM - 7PM, EAST TAPHOUSE HALL CAR PARK**

**FRIDAYS - 4:30PM - 7:30PM, PRINCESS ROAD PENSILVA**

**LOCAL FOODS FRESHLY COOKED**

**CASH OR CARD ACCEPTED - PRE-ORDERS WELCOME**

**TEL. 07966 994585**



**JP'S FRESH HOT FOODS**

**EVENTS TAILOR-MADE AND CATERED FOR WEDDINGS, BIRTHDAYS AND ANY CELEBRATIONS.**

**PLEASE CALL FOR ANY FURTHER INFORMATION.**



# Westwood Garden Maintenance



*Antony Watts*

*Grass Cutting, Clearance*

*Weeding, Turfing*

*Hedge Cutting*

*Patio Cleaning, Planting*

*Regular Visits / One-off Contracts*

*Residential & Commercial*

**FREE ESTIMATES**

01579 362019 [www.westwoodgm.co.uk](http://www.westwoodgm.co.uk) 07952 094472

## JPH Plastering and Rendering

Internal plastering

Internal and external rendering

Internal/external painting & decorating

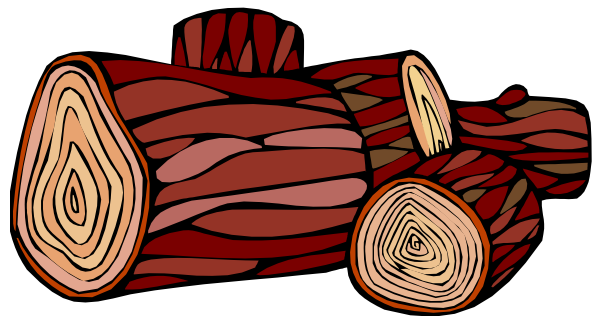
Property maintenance

Landscaping and land management

For estimates and no obligation quotes  
contact Justin on:

**07539 296799 or**  
**[info@just-in-stone.co.uk](mailto:info@just-in-stone.co.uk)**

## SEASONED LOGS



**MIXED LOAD**

or

**HARDWOOD**

**Tel. Jonathan**

**Mobile 07966 070725**

or

**01579 363157**

## **PENROSS**

Rosecraddoc Lodge Holiday Bungalows  
(Between Pensilva & Liskeard)

Ideal for family & friends coming to visit!



Refurbished in 2018. Sleeps 4. Electric, heating, bedding & towels inc in rent. Patio. Free wi-fi. Follow us on Facebook.

Sorry no pets or smoking.

Contact Julie Tucker on 01579 362221 or

email [penhargetfarm@gmail.com](mailto:penhargetfarm@gmail.com)

for 15% discount

## **NICOLA GREENE**

BSc (hons) Podiatry MChs

HPC Registered Chiropodist/Podiatrist

**Home Visit Practice treating all  
your foot care needs:**

- Nail Cutting
- Corns and Calluses
- Thickened Nails
- Dry Cracked Skin
- Verrucae
- Foot Pain
- Diabetic Foot Assessments
- Wound Care

**T: 01579 590027**

**M: 07786164205**

**E: [nicki\\_greene@yahoo.com](mailto:nicki_greene@yahoo.com)**

# **Matt's Windows**

**Repair of Windows, Doors  
& Glass Unit Replacement**

**T: 01579 641228**

**M: 07533 387368**

**Debbie's Care Services**  
**Tel. 0777 948 3230**

Hello, my name is Debbie. I am a local lady who has been working in the community for over 30 years.

I provide the following services and more!

- Assisting bathing / showering
- Preparation of meals
- Cleaning / Shopping / Ironing
- Companionship / Friendship and emotional support
- Assisting with mobility
- Day, Evening and Night Care

**MUST STEP**  
**PODIATRY**  
**HCPC Registered**  
**podiatrist**

Fully insured  
NHS experience

Kind and caring

Home visits

**All your footcare needs**

Most areas covered

**Tel: 07522 577012 or**  
**07561 608296**

**DO YOU NEED A HELPING HAND?**

Reliable, friendly,  
experienced, mature  
local resident offering  
the following services:

**Cleaning      Ironing**

**Shopping      Light Gardening      Dog Walking**

CRB/DBS checked and fully insured.      Competitive rates.

**Contact Jess:** Telephone or text: 07934 764 327.

Email: homeangel77@yahoo.com. Find us on Facebook







KV Accounting Solutions



## Local Accountant offering fixed fee accounting services

With over 20 years experience, I am a fully qualified, friendly, local accountant

- ✓ Annual Accounts for Sole Traders and Partnerships
- ✓ Book Keeping & Payroll
- ✓ Personal Tax Planning
- ✓ Company Accounts
- ✓ Business Support & Advice

- ✓ Self Assessment tax returns
- ✓ iXBRL tax filing
- ✓ Tax investigation Fees Insurance
- ✓ Company Secretarial work
- ✓ Tax calculations for Sole Traders and Partnerships

Kate Vaughnley FCCA - Chartered Certified Accountant  
Website : [www.kvaccountingsolutions.co.uk](http://www.kvaccountingsolutions.co.uk) or Email : [katevaughnley@gmail.com](mailto:katevaughnley@gmail.com)  
Telephone : 01579 364083



**Gas Services**

**NATURAL GAS - LPG - OIL**

**BOILER INSTALLATION**

**BOILER SERVICE & REPAIR**

**LONG WARRANTY FREE QUOTES**

**07859848288**

**[bagasservices@outlook.com](mailto:bagasservices@outlook.com)**





## Affordable Counselling

Caring, confidential,  
non-judgemental

- Increased confidence and self esteem
- Help to cope better at difficult times
- Improved relationships
- Clarify confused thoughts & feelings
- Assertiveness
- Personal insight
- Improved emotional health
- Available for youth and adults

**Isabelle McGarahan BA, PGCE**  
**Dip in Therapeutic Counselling,**  
**Accredited ACC, DBS cleared**  
**[www.im-counselling.org](http://www.im-counselling.org) email:**  
**[isabelle@im-counselling.org](mailto:isabelle@im-counselling.org)**  
**01579 344090/07857326229**



## P BRADLEY PLUMBING & HEATING

Email: [info@pbplumbingheating.co.uk](mailto:info@pbplumbingheating.co.uk)

Web: [www.pbplumbingheating.co.uk](http://www.pbplumbingheating.co.uk)

Facebook: @PDBradleyPlumbingandHeating

**NO JOB TOO BIG OR SMALL**

**24hr Emergency Call Out**

**Based in Liskeard**

**Call Today 07598956760**

## ***"The complete bathroom installation service"***

**New bathrooms fitted,  
floor and wall tiling specialist**

**General Plumbing including:**

- Bathroom makeovers
- Dripping taps and burst pipes
- Pump and cylinder changes
- Radiator upgrades and additions
- Specialist in Leadwork
- No job too small
- No Call out charge



**Friendly Service, Quality Work**

**NO VAT**

**City and Guilds Qualified  
established 1983**

**Call William Hale on**

**Tel: 01579 362132 Mobile: 07826 699719**





Kiln Dried Firewood  
Kindling & Firelighters  
Eco Heatlogs  
LPG Bottled Gas  
Patio, BBQ & Camping Gas  
Coal & Smokeless Fuel



**0800 8021 223**

**sales@loganslogs.co.uk**  
**www.loganslogs.co.uk**

## Heel 2 Toe Footcare

Tired Aching feet.

Corns, Hard skin, Verruca.

Fungal infected toe nails, or  
toe nails require cutting.

Diabetic feet also treated and  
regularly checked.

I can help to keep your feet  
looking and feeling good.

I am a trained Foot Health  
Practitioner to Diploma Level, fully  
insured & DBS checked.

I can do home visits via an  
appointment.

Call Penny: **07746 926146** for  
further information. **Please note**  
**new number May 2021.**

## MARK FITCH CHIMNEY SWEEP

- \* BRUSH & VACUUM
- \* CLEAN, RELIABLE SERVICE
- \* COVERING ALL S.E. CORNWALL
- \* DISCOUNT FOR MULTIPLE CHIMNEYS
- \* COWLS & GUARDS FITTED
- \* STOVES SERVICED



*Call  
Mark on:*

**01579 350762**  
**07773 462643**





# QUALIFIED RAYNOR MASSAGE THERAPIST

## RELAXING AND THERAPEUTIC MASSAGE TREATMENTS

Effective for many different types of chronic pain, sports injury, stress and tension related problems



CBD massage now available

### APPOINTMENTS AVAILABLE AT

LISKEARD THERAPY CENTRE  
LISKEARD PL14 3JB

THE WELLBEING CENTRE  
LISKEARD PL14 6AT

Contact : Tina North  
Phone : 07720 832322

Website : [massage-therapy-cornwall.co.uk](http://massage-therapy-cornwall.co.uk)



## R J Gardening & Handyman Services

All aspects of gardening and handyman work undertaken.

- ~Local and Trustworthy
- ~Hard Working
- ~Reliable and Experienced
- ~No job too small
- ~Competitive rates

Contact Raymond on:

07541 229064 or 01579 347622

[raymond\\_pearcegb@yahoo.com](mailto:raymond_pearcegb@yahoo.com)

Find us on Facebook.





**R&C**  
GROUNDWORKS  
& LANDSCAPES



Fencing  
Paths & Steps  
Turf & Astro turf  
Driveways  
Retaining walls  
Digger work  
Footings & foundations

Patios  
Rendering  
Decking

**And more**

Free no obligation quotes

**Call Rob on:**

**07518246666 or  
01579 641802**

# Window Cleaner

**Also any upvc cleaned**

**i.e. fascias, gutters, etc.**

**gutters cleared & unblocked**

**Please phone Rob**

**07709 053464**

# Window Cleaner

**Save Costly Energy!**



**SOLARTEC**

Windows &  
Conservatories Ltd

**'A' Rated WINDOWS & DOORS  
at BEST PRICES EVER!**



Professionally fitted and finished by us with a  
10 year ins. guarantee.  
In all colours

FENSA  
REGISTERED



**FACTORY SHOP  
SUPPLY ONLY**

For all your windows, doors, conservatories,  
fascia, trims, guttering and sealants

**7-10 DAY TURN AROUND ON WINDOWS,  
DOORS and CONSERVATORIES**

**TEL: 01579 343425**

**FAX: 01579 344500**

WEBSITE: [www.solartecwindows.co.uk](http://www.solartecwindows.co.uk)

EMAIL: [sales@solartecwindows.co.uk](mailto:sales@solartecwindows.co.uk)

**KEEPING JOBS IN CORNWALL**

## PMB Book Keeping

**Friendly Book Keeping Services:**

**Purchase and Sales Ledger**

**Bank Reconciliations**

**VAT returns - Making Tax Digital**

**Self Assessment Tax Returns**

**And More**

**Fully Qualified, Insured and  
Licenced**

**T: 01579 683624**

**E: [pmboutsourcing@outlook.com](mailto:pmboutsourcing@outlook.com)**





# Group Travel

Day Trips & Coach Holidays

Enterprise Park, Midway Road, Bodmin, Cornwall PL31 2FQ

## Coach Excursions & Tours 2022

6th May	Steam Train & Kents Cavern
7th May	Badminton Horse Trials
19th May	Cruise the English Riviera
14th June	Agatha Christies Greenway House
18th June	Falmouth Sea Shanty & Regatta
29th June	Trebah Gds, Falmouth & St Mawes
8th - 9th July	Hampton Court & Kew Gardens
16th July	Broomhill Sculpture Gdns & Barnstaple
22nd July	Exeter Canal Cruise & Dartmoor Line
6th August	Taunton Flower Show
7th August	Magic Millions Festival of Eventing
27th - 28th August	Great Dorset Steam Fair
2nd - 4th September	Burghley Horse Trials
17th- 21st September	Llandudno, North Wales

**Call: 01208 77989 for bookings and brochure**

website: [www.grouptravelcoachhire.co.uk](http://www.grouptravelcoachhire.co.uk)

## Bodmin MOT Centre

**01208 77989**

Garage Services  
MOT Testing Station  
Classes 4, 5 & 7  
Servicing & Repairs  
High Vehicles & Motorhomes  
Brake Test & Headlight Alignment  
Pre MOT Inspections  
Annual & Interim Vehicle Servicing

Commercial interim inspections available  
including brakes and lights

Helping you stay compliant

Bodmin MOT Centre at Group Travel  
Enterprise Park, Midway Road,  
Bodmin, Cornwall PL31 2FQ

## Martin Hoare – Local, Reliable, Competitive



WHEEL DIGGER FOR HIRE  
ALSO AVAILABE 'BREAKER'  
AND NEW CONCRETE  
'CRUSHER BUCKET'

ALL AT COMPETITIVE RATES

GROUND WORKS  
DRAINAGE  
NEW DRIVEWAYS  
SEPTIC TANKS &  
'SOAK AWAYS' INSTALLED



LASER LEVEL FOR HIRE  
QUOTES AVAILABLE



Phone 01579 363517

or

Mob 07863 291213





# INDEPENDENT FAMILY FUNERAL DIRECTORS

Supporting families to arrange funerals with sensitivity, dignity and care.

- Flexible, caring approach, tailor-making funerals to suit your needs and budget.
- Open and transparent, affordable pricing.
- Free bereavement support sessions, open to all in our community, first Wednesday of the month, 10am - 12pm.
- Prepayment Funeral Plans available

For details of our services and prices, visit our website.



**01579 362358 | [www.fdhallfunerals.co.uk](http://www.fdhallfunerals.co.uk)**



Avalennek, Caradon Town,  
Upton Cross, Liskeard  
Cornwall PL14 5AR  
Telephone 01579 363598  
Mobile 07901 538132  
[chrisrounsevell@tiscali.co.uk](mailto:chrisrounsevell@tiscali.co.uk)

## HOG ROAST EQUIPMENT HIRE AND MEAT SUPPLY

Hog Roasts For Those Special Occasions  
Self Catering or Hassle Free Service  
Everything done to your special requirements

**CHRIS ROUNSEVELL**  
**TRADITIONAL BUTCHER**

Come and visit our recently updated  
**Tile & Bathroom showroom** in PENSILVA

We offer a generous discount to all Pump Readers

Unit 24 Pensilva Ind Est, St Ive Road, Cornwall PL14 5RE 01579 362264

**CORNWALL TILE**  
CENTRE

Pensilva Showroom

Open	Mon - Fri	8.30am - 5pm
	Saturday	9.00am - 1pm

Tiles & Mosaics for:

Bathrooms & Kitchens Living Areas Conservatories  
Patios & External Areas Wet Rooms & Spas Swimming Pools  
& All Commercial Applications

 **atlas concorde**

[www.cornwalltile.com](http://www.cornwalltile.com)

**OPEN FOR RETAIL, TRADE & COMMERCIAL ENQUIRIES**





THE HOME OF WOOD

## BULK DISCOUNTS AVAILABLE ON OUR 30 YEAR SERVICE LIFE POSTS



**OUR GOLD TREATED STAKES AND POSTS ARE THE ONLY ONES AVAILABLE IN THE UK THAT ARE APPROVED BY THE WPA BENCHMARK FOR 30 YEAR SERVICE LIFE**

**For more  
informaton please  
contact one of our  
team**



**Bond Timber, Bake Sawmill, Trerulefoot, Saltash, Cornwall,**

**PL12 5BW**

**01503 240 308    [stacy@whbond.co.uk](mailto:stacy@whbond.co.uk)**



# Pensilva Stores

**Amazing Value**

**Premier**  
a great deal more from your local store

Mon-Sat. 7:00 AM. - 9:30 PM.  
Sunday 8.00 AM. - 9:30 PM.

- ✓ Fantastic Special Offers every month!!! (See store leaflets)
- ✓ Come and Check out our great deals on Wine, Beer and Spirits
- ✓ Local Produce: Homemade Butter and Clotted Cream, Meat from our local butcher
- ✓ Cornish Fresh Fruit and Vegetables
- ✓ Fresh Bread, Pasties and Cakes
- ✓ Take Away Coffee, tea and hot chocolate
- ✓ Newspapers and Magazines, Greeting Cards
- ✓ Paypoint, Lottery

**\* Free to use ATM \***

**\* Card Payment \***

**Friendly Staff + Service with a Smile !!!**

**Pensilva Stores is a family run business who have been serving local people and visitors for more than 21 years.**

Higher Road, Pensilva, Liskeard, Cornwall PL14 5NQ

Tel: 01579 362547

# MENDOLOGY

## Garage Door Specialist

- ☐ Repairs
- ☐ Servicing
- ☐ Installations

Out of hours service  
call Dave anytime 07974 442645

**MENDOLOGY** COMMERCIAL DOORS LTD  
www.mendologydoors.co.uk

**01579 363760**

# PensilvaCars

01579 363516

- ✓ MOTs Class 4
- ✓ Service
- ✓ Repair
- ✓ Tyres
- ✓ FREE Courtesy Car

- ✓ Car & Van Sales
- ✓ Diagnostics
- ✓ Air Conditioning



**We have offered a supply, fit & balance of tyre service for 10 years at competitive prices.**

**Most of our tyres can be supplied the same day.**

**LOCAL RECOVERY £45.00**

**[www.pensilvacars.co.uk](http://www.pensilvacars.co.uk)**

**[pensilvacars@hotmail.co.uk](mailto:pensilvacars@hotmail.co.uk)**

We can service and repair your car to manufacturer specification, keeping your dealer warranty without main dealer expense.





# KEITH RICHARDS

## Motor Body Repair Specialists

A family run business with fully equipped & maintained workshops & a focus on  
Customer Care

- ♦ Motor Body Repair Specialist
- ♦ Mechanical Repairs
- ♦ Servicing to All Makes & Models
- ♦ Computer 4 Wheel Alignment
- ♦ 24 Hour Recovery Service
- ♦ Renovations & Re-sprays
- ♦ Member of RMI (Retail Motor Industry Federation)
- ♦ Latest Diagnostics (including specialists for VW, Audi, Seat,  
Skoda & Vauxhall)

With over 30 years' experience we aim to provide you with:- Value for Money -  
Friendly Service - Professional Approach - Expert Advice that you Can Trust  
(Visit our website for more details)

Pensilva Industrial Estate, St Ive Road, Pensilva, Liskeard, Cornwall PL14 5RE

Tel: 01579 362593

Email: [keith@keithrichardsmotorbody.co.uk](mailto:keith@keithrichardsmotorbody.co.uk)

Fax: 01579 363194

Website: [www.keithrichardsmotorbody.co.uk](http://www.keithrichardsmotorbody.co.uk)



Wm. Newham & Sons Est. 1895

Proprietor Robbie Savill AWCB

## CHIMNEY SWEEPS & BLACKSMITHS



CHIMNEY SWEEPING

BIRD GUARDS, COWLS & POTS FITTED

CCTV INSPECTIONS & SURVEYS

STACK REPAIRS & REBUILDS

RIGID STEEL SYSTEMS ERECTED

STAINLESS STEEL and PUMPED CONCRETE  
CHIMNEY LINING

STOVES SUPPLIED, INSTALLED & REPAIRED

FIREPLACE ALTERATIONS & RENOVATIONS

FULL RANGE OF FIREPLACE FURNITURE  
made to order

**01579 347777**

## ADVERTISE HERE!

For just £10 per month incl VAT.

**2 MONTHS FREE** for a 12  
month order. i.e. **£8.33 incl VAT**  
per month for 12 mths

See the full tariff on page 3

**One thousand copies per  
month** distributed free of  
charge to households in the  
Parish of St Ive.

# J. J. Child

**Plumbing and heating engineer.**

**Oil appliance service, repair and breakdowns.**

**Over 30 years experience**

**Call John: 01579 362336 or 07837 921086**





# Pensilva & St Ive Post Office Service

**Pensilva:** Through the coffee shop on the 1<sup>st</sup> floor of Millennium House

**Tuesdays:** 9am to 1pm.

**Wednesdays:** 9am to 12 noon.

**Fridays:** 9am to 12 noon

**The Millennium House  
coffee shop is also open on  
these mornings.**

.....

**St Ive:** At St Ive Village Hall

**Wednesdays:** 10:30 to 11:30am

**Coincides with the St Ive  
Village Hall Coffee Morning**

## Saint Ive Parish tree-planting survey

Please let us know about any trees that you plant within the Parish. We will include them in our own survey and we will notify the Forest for Cornwall on your behalf, if appropriate.

email [posicrp@gmail.com](mailto:posicrp@gmail.com) or message us on Facebook

[www.facebook.com/posicrp](https://www.facebook.com/posicrp) or phone 01579 364016.

Pictures very welcome.

