

# THE PARISH PUMP



April 2022  
Edition 485



**The Newsletter for the Parish of St Ives**



Pensilva WI's Charity Shop Fashion Show at Millennium House. All the clothes were bought from charity shops and are modelled here by the ladies of the WI themselves. Just three short of a calendar?

## Disclaimer

The articles appearing in this magazine do not necessarily reflect the views of the Parish Council nor of the Parish Pump Editor.

## Parish Councillors Telephone List

Alan Moss (chair)	01579 362064	Ivor Vaughan (vice-chair)	07979 934604
James Bruce	07411 192645	Marlene Carr	01579 362919
Martin Corney	01579 382450	Sandra Doe	01579 363096
Rosemary Farley	01579 384810	Nigel Gisby	01579 363096
Ron Greenhough	01579 363096	Tony Hodson	07973 536964
Nigel Libby	07968 891814	Paul Mann	01579 363757
Craig Vaughnley	01579 364083		

## Meetings of St Ive Parish Council

Meetings are now being held when possible. Please see the Parish Council website for meeting dates, agendas and minutes.

<http://st-ive-parishcouncil.gov.uk/minutes-agendas/>



Devon & Cornwall Police  
Building safer communities together

 **101**

Minicom 18001 101

## Police Community Neighbourhood Office

Your Community Support Officer is PCSO Steve Edser 30173.

email: CIOSNBMLLST@devonandcornwall.pnn.police.uk

To report a crime call 101 or go to [www.devon-cornwall.police.uk](http://www.devon-cornwall.police.uk)

In an emergency call 999

## Contact details for St. Ive Parish Council and for Millennium House

Address for correspondence: Millennium House, Century Square, Pensilva PL14 5NF

General Parish matters should be raised initially with the Parish Clerk, Jenny Hoskin, who will present them to the Parish Council.

Telephone: 01579 363096, email: stiveparish@btconnect.com

For accounts matters for the Parish and for Millennium House contact John Body, Finance Officer: 01579 362102, email: millenniumhouseadmin@btconnect.com

Millennium House enquiries and reservations: 01579 363096

email: millenniumhouse@btconnect.com.

On the web: Millennium House Website: [www.cornwallvenue.com](http://www.cornwallvenue.com)

Parish website: [st-ive-parishcouncil.gov.uk](http://st-ive-parishcouncil.gov.uk) Facebook: [facebook.com/stiveparishcouncil](https://facebook.com/stiveparishcouncil)

## PARISH PUMP ADVERTISING COSTS

The prices for advertising in the Parish Pump are as follows:

The below prices include VAT at 20%:

**Quarter page: £10:00 per month or £100:00 for 12 months.**

**Half Page: £20:00 per month or £200:00 for 12 months.**

**Full Page: £33:00 per month or £330:00 for 12 months.**

## Parish Pump Information and Contact Details

To contact the editor please email: [parishpump@btconnect.com](mailto:parishpump@btconnect.com)  
or phone the Parish office: **01579 363096**.

Hardcopy submissions by post or by hand to the Parish office, Millennium House, or Millennium House reception.

Softcopy submissions: By email to the editor in MS Word, MS Publisher, pdf, Tiff or jpeg. Please use A4 pages and minimum 16 point font as the Pump is initially produced in A4 size and reduced to an A5 booklet at the printing stage. If in doubt please contact the editor.

Bargain Corner free ads by email to the editor or drop off at the Parish Office.

Deadline for the Parish Pump is STRICTLY 15th of every month

## From the Editor

With recent increases in energy prices so much in the news, and the likelihood of more rises to come, the advertisement on pgs 14-15 for UK Greendeal comes at an opportune time. If your house is poorly insulated, you should take advantage of this scheme to save money on your heating costs, and help to reduce carbon emissions at the same time.

The energy crisis has sparked a lot of debate about what would be the right way to tackle the problem. There are, essentially, three options: 1) to continue to rely on other countries to supply us with energy, and hope that the regimes in those countries do not exploit our dependence on them; 2) to use the current crisis as a launchpad for the greening of our economy, that has been promised (and delayed) for a long time; 3) to reopen some of our own native sources of hydrocarbons (and push option 2 even further into the future). There are supporters for all three options, and I am not going to take sides here, but what strikes me is this: We humans consider ourselves to be the most intelligent species ever to have lived on this planet, and we could well be right, because we are actually very good at that kind of investigative scientific analysis. But all that really means is - that we are really good at doing what we are really good at. There are other areas where the evidence suggests that we are unbelievably useless. For example, we are rubbish at solving social problems, and we still, as a race, have not found a way to govern ourselves without causing a ridiculous amount of damage in the process. The energy crisis is just one example of that just now. Could do better!

Keep well - Joe

### St Ive Village Hall

Gardening Club	1st Monday monthly 7:30pm	01579 382762
St Ive Snooker Club	Monday & Thursday 7:00pm	01579 382315 R Bunkum
Yoga	Tues 4:30-6.00 & 7:00-8:30pm	07947 785554
Post Office	Wednesday 10:30 - 11:30 am	
Coffee Morning	Wednesday 10:30 - 12:00	
Art Group	Fridays 11:00am - 4:00pm	07772 639942
Social Evening	Fridays from 7:30pm	01579 384810 Rosemary

**St Ive Village Hall is available for hire, £5.00 per hour. Includes use of the kitchen & electric (except wall heaters which are on a £1 coin meter). Ring Amanda Eveson on 01579 388782**

## **Chairman's Report April 2022**

With the invasion of Ukraine by Russia, March 2022 has witnessed the appalling atrocities that one nation can inflict on another, and the suffering of men, woman and children displaced from their homes and facing an unknown future that they are powerless to control.

In our own way, our community has pulled together with people from around the world to help the fleeing refugees. The response to our request for items to send to the countries neighbouring Ukraine was outstanding: within two days we had a room full of clothes, toys, blankets and toiletries. Volunteers sorted the items into boxes ready to be shipped. Thanks go to the donors, the volunteers, to Andy King who provided the boxes and took the filled boxes to Bridgewater for onward shipment, and to Darren's Cars and Liskeard Auction Rooms who also took some of our boxes.

The Coffee and Cake Day on the 12th was another success: £1,066 was raised and passed to the Disaster Emergency Committee (DEC). A thank you goes to the volunteers, those who brought donations and those who supported the Coffee and Cake Day.

In the light of all that, it seems odd to talk about our normal lives, but our Jubilee Committee has been working hard, planning events for the few days from June the 2nd to the 5th. We need your help! Get together with your neighbours to decorate your street. If there is anyone who was born on Accession Day, 6th February 1952, please let me know. Look out for our publicity flyers with further details and see the notice on page 7.

Stay safe - Alan Moss (Parishjubilee619@gmail.com)

### **Opening times for the Mel Bar at Millennium House**

Thursdays            5 - 11 pm.

Fridays                5.30 - 11 pm.

Saturdays            5 - 11 pm.

Also Tuesdays    5 - 11pm but only when the Function Room is in use.

These times may change depending upon footfall.

## **Exciting New Community Farm in Pensilva!**

We are a newly formed Community Benefit Society called Tregovenek (meaning Place of Hope). We are setting up a small community farm and gathering space near Pentiddy Community Woods, Pensilva. This will have the health and wellbeing of the local community, the land and its wildlife at its heart.

We would love for more people to get involved! We work in small groups, all connected to a core group. These groups currently cover community engagement, legal and governance, media and communications and ways of working. We specifically need support in business planning, finance, fundraising and communications. Don't expect boring meetings, we are purposefully exploring ways of working that keep us energised, supported and constantly learning. This is a new and different type of project!

We are working with other local groups, including the Parish of St Ive Community Resilience Project, the Growing Project and Pentiddy Woods. It's all about connecting what we have and strengthening connections for the future.

On the 21st/22nd May, we will be offering a free 'Introduction to Permaculture' course for local people who are interested in joining a new design team for the project or in creating their own projects. Permaculture is a design process ensuring that any projects, from food growing to building design, consider people and planet, creating a sustainable, fairer world for us all. This lively and participatory weekend will be taught by local Permaculturalist, Klaudia VanGool and held at Pentiddy Woods, an established permaculture project in Pensilva.

If you are interested in getting involved and possibly contributing to an existing working group, **there is an opportunity to join us on the land for an 'Introduction to Tregovenek' on either Sunday 24th April (1-3pm) or Friday 29th April (1-3pm).**

To book your place on the permaculture course or to let us know you would like to come to the Introduction to Tregovenek, please email [mail@tregovenek.org.uk](mailto:mail@tregovenek.org.uk) or call 01579 363775. We look forward to meeting you!

For further general information, please visit [www.tregovenek.org.uk](http://www.tregovenek.org.uk).



**2-5 JUNE**



*Queen's*

**PLATINUM JUBILEE**

**THURSDAY** **2ND JUNE** Children's Disco 4:40-6:30pm

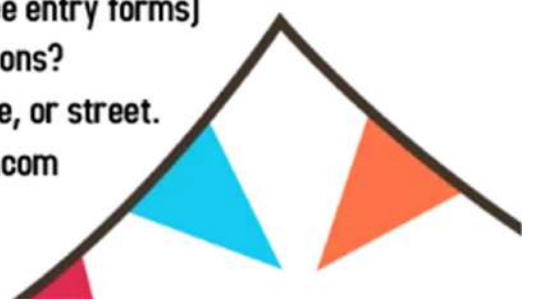
**FRIDAY** **3RD JUNE** Morning: Tabletop sale 10-2pm  
Afternoon: Children's Bingo  
Evening: Family barn dance with live Ceilidh band, bar

**SATURDAY** **4TH JUNE** Jubilee Celebration Day! Including stalls,  
Grand Decorated whellbarrow pageant,  
choir, and bouncy castle

**SUNDAY** **5TH JUNE** **Big Jubilee Lunch**

Complete details to follow - But we need your input and suggestions:

- Do you want to have a stall on the Saturday?
  - Can you recommend entertainments, band or singer?
  - Enter the Garden in Bloom or the scarecrow competition, (see entry forms)
  - Do you have any ideas we can add to the celebrations?
  - Get together with your neighbours to Decorate your house, or street.
- Let us know, send them to [parishjubilee619@gmail.com](mailto:parishjubilee619@gmail.com)



## PENSILVA IN BLOOM ENTRY FORM

**Entry piece must be on display from 28th May to end of Jubilee.  
Return completed form to MH reception or coffee shop.**

Judging will take place during the week commencing Monday 30th May, and the winner will be announced at the Jubilee Lunch. The Judges' decision is final.

Entry Category (multiple allowed):

Garden     Hanging Basket     Tub / Trough

Name: \_\_\_\_\_

Address: \_\_\_\_\_

Postcode: \_\_\_\_\_ - \_\_\_\_\_

Telephone: \_\_\_\_\_

Visiting notes: \_\_\_\_\_

\_\_\_\_\_



## PENSILVA CARNIVAL SCARECROW COMPETITION ENTRY FORM

**Scarecrow must be on display from 29th May to end of Jubilee Weekend.  
Please return entry form to MH house reception before 27th May.**

Photos will be displayed at Millennium House reception during Jubilee Weekend for public to judge.

Name: \_\_\_\_\_

Address: \_\_\_\_\_

\_\_\_\_\_

Postcode: \_\_\_\_\_ - \_\_\_\_\_

Telephone: \_\_\_\_\_


Email: \_\_\_\_\_





## Pensilva Film Club

A good number congregated to watch this month's movie "Amonite". Whether this was due to the subject matter, better weather and lighter evenings, or simply a lack of inspiring TV, I do not know. But I was very glad to see everybody and this is a great encouragement to the small team that organises the film nights. For me personally, I thought the film was a little slow at times with many almost silent scenes, but this did not distract from an outstanding performance by the leading lady, Kate Winslett. I tend to somewhat underestimate this "home grown" actress but I will certainly hold her in higher regard from now onwards.



Pensilva Film Club (Part of C-Fylm, Creative Kernow)  
Presents: At Millennium House, Pensilva  
**Tracks**

**22<sup>nd</sup> April at 7pm for 7:30 start.**

Please note, it's the 4th Friday in April, not the 3rd as usual.

This month's offering is very different. We are pleased to be showing a somewhat lesser-known film called "Tracks", a biopic which follows the journey of a young Australian woman who decides to trek solo across the vast Western Desert to the ocean. One review of this film I've read describes it as "achingly beautiful" so I am expecting great things! The showing is on Friday April 22nd. As usual, doors open at 7pm for a 7.30 start. Price for admission is £3 for C-fylm members and £6 for new members. The bar will be open for drinks both pre and post show. Hope to see lots of "old" and new members alike.

Pensilva Film Club - in association with C-Fylm; part of Creative Kernow

## TWELVE YEARS OF WILDLIFE WATCHING IN THE PARISH OF ST. IVE

Since moving to the Parish at the end of 2009, I have been photographing and recording the wildlife which I see at my home on the edge of Pensilva on a daily basis. This month I thought I would share some observations of one of our most common mammals... **THE FOX**



Although I have kept records throughout the time I have lived here, I have not always had a trail camera. As most of my sightings of foxes are on this camera (including the one above) changes in numbers over the years reflect when I had a remote camera rather than reflecting any changes in the local population. Given that this is definitely not an endangered species, this is not too much of a worry.

Foxes have mastered the art of living alongside man, take advantage of what we throw away, and can be more densely populated in towns and cities than they are in the countryside. However our country foxes tend to be much better looking than their often rather tatty-looking city cousins.



Foxes occasionally come through our garden in broad daylight and have been known to look in through the lounge door! This vixen is marking her territory by urinating at the bottom of a bank about a metre from our kitchen window, from where the photo was taken.

In June 2010 I was able to watch a family of cubs from the back bedroom as they played below the house. On one occasion they were joined by a roe deer and one young cub approached it with a mixture of curiosity and caution, probably never having seen a deer before. The deer took no notice!



In Jan 2016 I was privileged to see two foxes mating in a field next door.



During mating, the tip of the boned penis usually becomes engorged, causing the two to become locked together for anything from a couple of minutes to an hour and a half. This pair were already locked

together when I first spotted them and despite occasional snarling struggles did not part until 20 minutes later. When they did eventually part (with some difficulty) they moved about 30 feet apart from each other to 'lick their wounds'. However, they did then leave together. Indeed, foxes are known to often be monogamous. About 5 minutes later, a pair of foxes were seen sniffing the ground where the mating had taken place. However, I could not tell whether it was the same pair or a different one.

It is in winter (when most breeding occurs) that the characteristic barking and screeching of foxes can most often be heard. Foxes can breed at other times of the year, but most commonly do so in winter. About four or five young are born in an underground maternity den in spring, after a gestation period of 45 - 50 days. They tend to live in a loose family group comprising of a breeding pair and their young. By autumn, the cubs will be self-sufficient and some will leave to establish their own territories, whilst others will remain. Foxes are not long-lived mammals and often only survive in the wild for about three years.

Foxes are resourceful animals, adapting to take advantage of any opportunity. They will eat anything from beetles and birds to rabbits and rats. They may not be too popular with you if they get in amongst your hens, but they do play an important role in keeping the numbers of some other species under control.



HAPPY WILDLIFE WATCHING!  
HILARY

## **St Ive & District Gardening Club Report - March 2022**

Monday 7<sup>th</sup> March was the AGM for our Gardening Club, the first AGM since 2020, due to Covid. Like organisations everywhere, our club was hit by Covid, as was clear from the committee's reports: visits that couldn't take place, meetings not held, events that didn't happen, less people attending... But, unlike some, our club is still around, so visits, meetings, events & people are back! Through the last 2 years Mike (President), Jayne (Treasurer) & Veronica (Secretary) have continued in their posts for which we are all grateful. Mike and Veronica were re-elected, while Jayne stepped down from her post after many, many years. The club thanks her for everything she has done (an incredibly long list!). Judith volunteered to be our treasurer for the coming year.

After the AGM, our guest speaker was Claire Woodbine from the National Garden Scheme (NGS). One of our visits last year was to an NGS garden, but I don't think any of us really knew much about the scheme. Claire explained that it is a charity that has been around since 1927, but the idea goes back to 1859 and a man called William Rathbone. He was a rich man and when his wife became very sick he paid for a private nurse to take care of her at home. When his wife sadly died, William realised that few in the area would have been able to afford this amazing, private nurse and he decided that was not OK. This particular nurse was so good to his wife that he paid for her to become what we would now call a community nurse for the area. William felt strongly that he wanted every community to have this service and realised that training would be needed, so he wrote to Florence Nightingale! She replied, with advice & supported William whilst training for district nurses was set up in Liverpool. William & Florence became friends. The training needed funding, so fundraising for district nurses began. Elise Wagg was a big fundraiser and keen gardener. She saw potential in people paying to visit others gardening, with the money going to the district nurses. George VI supported the idea and the NGS was born. Gardens were opened in 1939 to aid with the war effort. In 1948 the NHS began to pay for nurses' salaries, but it was clear that more support was needed. So, the National Garden Scheme continued: open a garden, charge for entry, with proceeds to good causes, predominantly to the NHS. Claire explained that the NGS includes a vast variety of gardens right across the country: small, big, vegetables, water features, wildlife in abundance. All raise funds for good causes and are a great way to improve mental and physical health. Many gardens in the Scheme open in Cornwall & Devon as well as further afield. Look out for the yellow booklet or visit [ngs.org.uk](http://ngs.org.uk). Many are dog-friendly & refreshments available too.

### **What is St Ive & District Gardening Club?**

At the end of every report I write 'visitors & new members welcome' and 1 or 2 new faces have come along, which is great. For the vast majority of my life I have known about Gardening Club which, I'll admit, I thought was a group of gardeners who knew the names (including the Latin names!) of every plant, tree & shrub in the world! I thought it wouldn't be for someone like me whose idea of gardening is digging a hole in the ground to plant something with pretty flowers, having no idea what the name of the plant is! I wanted to try some new things so I went along to a Gardening Club meeting. Yes, I had misjudged it. This is the reality: In summer, monthly visits to local gardens, usually just our group. What's not to like about warm summers evenings surrounded by beautiful gardens? In winter, guest speakers from a variety of sectors, gardens, wildlife, environment, produce & sometimes nothing to do with gardening! And you don't need to know the Latin name of anything! There is a mini raffle with prizes which might include chocolate, plants with pretty flowers or bird boxes! If you wish to join it's just £5 a year. Garden visits are extra but if we have enough members it could be free again! Or just come along once for a garden visit or guest speaker. We meet on the first Monday of the month. Our first garden visit of the year is on 4<sup>th</sup> April to The Glebe at North Petherwin. Meet: St Ive Park car park. Leaving at: 5:30pm. Entry (with refreshments): £5. Wear good footwear, it might be wet underfoot.

# The Future of St Ive Church.

Many of you will remember that a number of years ago St Ive Parish Church had to close. It needed major repairs and had no money left. A group of dynamic people set to and worked hard to raise money and re-open the church. There have been years of cream teas, table top sales, and lunches that have kept the finances topped up, and brought people together. But now that dynamic group are no longer in their 60's. They are in their 80's and 90's and some are gone to glory!

St Ive again faces a kind of end. The congregation of around a dozen people meet once a month for a communion service as we don't have folk who are able to open up and set up the church more often. At the end of this year the bank account will run out of money. The electoral role have been contacted to give warning of this state of affairs two years ago, and the village was leafleted before Christmas. With no new enthusiasm for the church building or congregation, the PCC have had to take the difficult decision to move toward closure.

This will be a long process, and we will run out of money before we reach the end of it. However we have been strongly supported by Emily Estates who are building the museum to Emily Hobhouse in St Ive. They are keen to take on responsibility for the church building, on the condition that their visitors can visit the church, and the local community can continue to use it as they already do. It is exciting that there is potential for us to "have our cake and eat it"! The congregation could be relieved of the responsibility for the costly (but beautiful) medieval building, whilst being able to continue worshipping, with only the cost of ministry to find. Hopefully everyone will continue to support us through this extended period as we work to find the best solution and secure the Church's future for generations to come.

Churches are facing difficult decisions about their future all over Cornwall, but few have the hope of their building being maintained and remaining as a church. I am grateful that we have such a positive way forward. For those who value the cultural and historical nature of the church, it is going to be safeguarded. And in terms of the Christian mission of sharing God's love with our community, it is good that we will have a base from which to continue.

Rev Becca Bell



A quick thank you to **Pensilva Stores** and **Pensilva Cars** for donations to support the purchase of fabric paints for **Pensilva School** to paint pennants for the Queen's Jubilee weekend.



UK Greendead is a company built, owned, and run by family and friends ensuring customers and their homes receive a personalised service with care and integrity at the heart of all we do.

Our aim is to improve people's quality of life and comfort in their own homes by reducing their energy consumption, whilst helping to stabilize our fragile planet. Much of our work comes from referrals from satisfied customers to friends and family, and we take great pride in the service that we provide.

UK Greendead is an independent eco-surveying company. We look at all aspects of residential properties looking to improve their carbon footprint and reduce their energy emissions, assisting the government with the mammoth task of bringing all greenhouse gas emissions to net-zero by 2050, whilst avoiding any costs to our customers.

The core of our work is to utilise government ECO3 funding (and soon ECO4 once this is released by the government) to provide free fully funded energy-saving measures to you.

Once we identify possible improvements we will guide you through the funding process from the initial survey, to placing your work with a government-approved national award-winning installation company, to improve your property's energy efficiency, yet not costing you a penny.

Free options available include the following:

- Cavity Wall Insulation (Bonded bead insulation is used NOT blown mineral fibre that is unsuitable for Cornwall – Fully funded )
- External Wall Insulation (solid builds – Fully funded)
- Internal Insulation inc plaster boarding & skimmed finish (solid builds - Fully funded)
- Loft Insulation up to 270mm (Fully funded)
- First Time Heating Systems (Fully funded)
- Electric Heating Upgrades (Fully funded)
- Mains Gas Boiler Replacement (Funded with possible contribution on a case by case basis, boilers will be checked for eligibility during your survey/enquiry.)

## **REDUCE YOUR BILLS AND WARM YOUR HOME.**

All the insulation work we provided comes at no cost to yourself (in fact you have already paid for this through your energy bills) and will come with a 25-year guarantee backed by the governing body of insulation CIGA.

It's estimated that 25% of all heat loss from an uninsulated home is through the roof which makes insulating the roof space one of the most cost-effective solutions. It can save you around £250 a year.

Cavity Wall Insulation with bonded beads is a quick, hassle-free way of insulating your home. 45% of a property's heat can escape through cavity walls and an average property will save £300 a year with cavity insulation.

If your house was built before 1919, it's likely that it was built with solid walls. Twice as much heat escapes from solid walls than cavity walls, so internally or externally insulating solid walls can considerably cut your heating bills – you could have an additional £450 per year in your pocket.

Upgrading your heating to a more modern and energy efficient system or having a first time heating system installed reduces both your energy consumption and bills. Our A-rated boilers are able to save you up to £350 annually, as heating accounts for approximately 60% of annual energy costs.

**If we CAN help you, we WILL!!  
Call John your local parish surveyor today:**



**07462 450184**

We use only the highest quality BBA products and we're a Green Deal approved installer PAS2030.



UK Greendead work within the Ofgem regulated ECO scheme, as well as partnering with numerous local authorities to offer you free\* insulation measures via your local authorities LA Flex Scheme. \* Subject to survey - Terms & Conditions apply.

<http://ukgreendead.org.uk>

## Pensilva WI March report

The annual meeting of Pensilva WI came around a little quicker this year, as due to Covid we only had the last one in July 2021, but a large number of members came along this time as part of the programme was a Charity shop fashion show by the Committee. Cherry did an excellent job of being compere and describing the outfits the models were wearing, where they had been purchased and the cost. They were all very different, ranging from the casual to sophisticated and expressing the wearer's personalities well.

New Committee elected: President Verna Dawe, Treasurer Jenny Rendle, Secretary Alison Willis plus Trish Thomas, Irene Elliott, Cherry Woodhouse, Frances Tucker, Jane Hall, Jean Hoare, Mary Yates and Pauline Millar.

There were 8 birthdays this month, Eileen Adgo, Janet Sheer, Elaine Burden, Violet Gold, Jenny Rendle, Mary Yates, Jill Pascoe and Pauline Millar.

Competition results for the year were announced and cups and prizes presented. Flower of the month 1st Mary Yates, 2nd Irene Elliott, 3rd Alison Willis. Monthly competition 1st Alison Willis, 2nd Verna Dawe, equal 3rd Cherry Woodhouse & Jenny Rendle.

Monthly competition results: Flower of the month 1st Sue Hill, 2nd Jean Cole, 3rd Frances Tucker. An old coin 1st Sue Hill, 2nd Sue Turpin, 3rd Rachael Palmer.

Next month's meeting at 7.15pm in Millennium House is the Group meeting with St. Neot and Liskeard joining us for 'a visit to China'. All visitors will be made most welcome.



Showing off their outfits, pictured from left to right: Alison Willis, Irene Elliott, Jenny Rendle, Trish Thomas, Frances Tucker, Cherry Woodhouse, Verna Dawe, Mary Yates and Jean Hoare.



## **PENTIDDY COMMUNITY WOODLAND - THANK YOU VOLUNTEERS!**

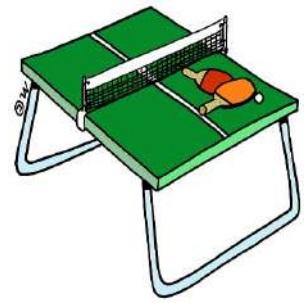
Despite challenging weather conditions over the Winter, the amazing team of volunteers have achieved so much and appear to have enjoyed themselves! The paths are so much clearer from brambles and there have been a large number of diseased Ash trees felled and processed for firewood.



So when you're enjoying a relaxing, peaceful walk at Pentiddy this Spring and Summer, spare a thought of gratitude to everyone who came out to help on the work days and of course to those who provided cake to help us through! THANK YOU!

**CLEANER**  
**JILL HARRIS**  
**£10 per hour**  
**07502 436657**  
**Pensilva area only**

# ST. IVE COMMUNITY SOCIAL EVENING



## VILLAGE HALL



**FRIDAY NIGHTS 7.30PM**

**Funded by Contributions**

## **QUEEN'S JUBILEE - TABLE-TOP SAFARI IN PENSILVA**

**Advance notice to sellers and buyers.**

As part of the village Jubilee weekend celebrations, Sarah (who organised the previous very successful table-top safari) has agreed to arrange another for Thursday June 2<sup>nd</sup>, from 10-2. To this end, she would like to hear from anybody who wishes to participate in order to plan a route which can then be advertised nearer the time. The first such sale was incredibly popular and attracted lots of sellers and buyers alike. Most of the tables were located between East Park and The Vic, which made for an easy walk between them. If, however, there is anybody who would like to be involved, but lives further afield, tables will be welcome on the grass at the front of Millennium House. Should the weather prove less favourable than previously, the sports' hall will be made available.

So – take the opportunity of having a good clear-out, whatever you've got to sell will be most welcome. Sarah can be contacted on – [sm.pensilva@gmail.com](mailto:sm.pensilva@gmail.com) or via Judy on 01579 208836. See you there.



## The Growing Project is looking for volunteers!



The Growing Project is on the lookout for volunteers to help with practical work and to take on management roles.

Becky Payne runs the day-to-day operations, along with five regular volunteers but, with the spring growing season just around the

corner, she is looking for some extra help with sowing, planting, harvesting and packing, as well as for anyone with DIY skills, or the expertise needed to run a Community Interest Company (CIC).

A number of innovations are planned for the coming months, including a full upgrade of the site's utilities and facilities.

“We are a happy, hard-working team and we grow a large variety of organic crops,” said Becky. “But with spring coming, we could do with a few more pairs of hands. An hour a week would be a huge help. As well as knowing they're helping a worthwhile community cause, volunteers also find working on the land can be highly therapeutic for their own lives.



“Being outdoors, and active, eating fresh produce and working as part of a caring team, whilst benefiting the community is what we are all about. We are looking for volunteers for numerous jobs, but if you just want to come along for some relief from the stresses of life, you are more than welcome.”



Anyone interested in volunteering, or in finding out more about The Growing Project can contact Becky on 07854 353865 or via the Growing Project Facebook page.

**“Grow vegetables and grow people.”** Ruth Wilson, Growing Project founder.

## Millennium House Community Transport

**Do You Require Transport to and from the Doctors or Hospital?**



Although we have lost the use of the AGEUK vehicle, the volunteer drivers have agreed to continue to use their own vehicles to continue to help those in need.

Millennium House Community Transport's aim is to connect local communities and reduce social isolation.

If you would like to volunteer as a driver please contact Millennium House on **01579 363096**.

If you require transport to Hospital; Doctors or Vaccination and have mobility issues, or are unable to drive to your appointment, please contact Millennium House on:

**01579 362919 or 01579 363096** and we will endeavour to help.



## TAPS RELAUNCH



Covid 19 has disrupted many groups and organisation. The Steering group has worked tirelessly to provide support to members through zoom meetings, newsletters and one to one telephone calls, but with regret this has not retained our members.

But, as they say, when one door closes another one opens, the fight against prostate cancer will go on through a different programme of awareness. Following the AGM meeting it was decided to promote the message by providing a presence at local shows and events, by giving talks to local organisations and groups. and through leaflets, posters and articles in local newsletters.

Can you help us defeat this cancer, if you are involved in running a local show or events and would like our presence or to give a talk to your group please let us know through one of the contact avenues below.

If you or someone close to you has just been diagnosed and would like to chat with someone who is already living well with prostate cancer diagnosis give us a call we are always willing to listen and give support where we can.

**Website:**<https://www.tamarareaprostatesupport.org>

**Email:**[tapsinfo555@gmail.com](mailto:tapsinfo555@gmail.com)

**Paul Mansell 01822 832179 Harry Lawson 01579 383258**

**John Stewart 01822 833343 Stephen Williams 07735 380883**

### **Supporting Guiding & Scouting Activities in Pensilva 200 CLUB Draw Results for February 2022**

**1st No. 153  
Mrs J Mann**

**2nd No. 157  
Mrs C Torpy**

**3rd No. 46  
Ms M Ede**

**Thank you for your support**



**T. Tribute**  
**K. Kids and**  
**Y. Youth**

**Sunday**  
**3<sup>rd</sup>**  
**April**

**The**  
**Tribute**  
**Cluster**  
**of**  
**Churches**



**Primary aged kids:**  
**4.30 - 6.00 pm**

**Secondary aged youth:**  
**6.00 - 7.00 pm**

**at**

**Menheniot Parish Church**

To book a place contact: [revbeccabell@gmail.com](mailto:revbeccabell@gmail.com)



## **LENT LUNCH**

Please come & enjoy a simple meal of homemade soup with a roll & cheese, coffee or tea



**DELICIOUS**  
**HOMEMADE SOUPS**

**St John's**  
**Pensilva**

**Thursday 7<sup>th</sup> April**

**12 noon**  
**to 1.30 pm**

Liskeard Lions present

On Friday 8th April

at The Public Hall,  
Liskeard



# Cinderella

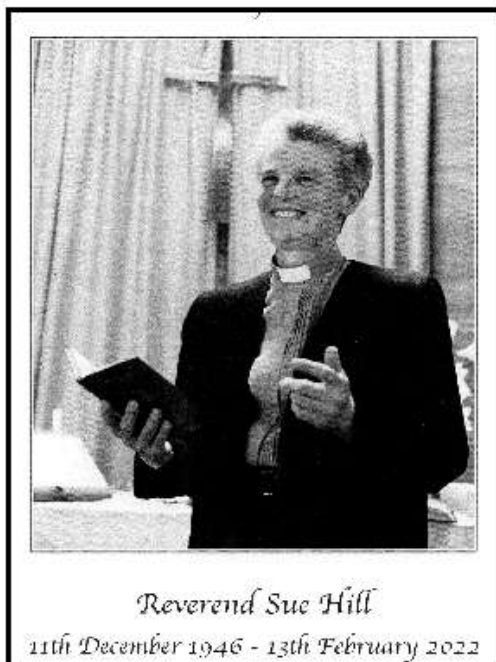
Free to the over 60s (Friday only).

**Leaving 6.00pm from The Cross, Pensilva.**

Also picking up at 6.10pm from St Ive Village car park.

**Please book as soon as possible as only a limited number of seats are available.**

To book, please ring Jean Hoare 01579 362531



Reverend Sue Hill

11th December 1946 - 13th February 2022

## *St John's Pensilva* *Sunday 10<sup>th</sup> April*

**11.00 am**

*A time of worship, praise  
and thanksgiving  
in celebration of the life of  
the Reverend Sue Hill*

*World Wide Missionary ~ State Registered Nurse ~ Midwife  
Methodist Minister ~ Hospital Chaplain ~ Pensilva & St Ive Pastoral Visitor*

*Readings from her journal ~ illustrated with displays  
of her photographs and films*

*All welcome*



# Teatime Church



For children and their families

Sunday 10<sup>th</sup> April

3.45pm

St John's Church

Pensilva

Sharing a Bible Story

Playing Games

Singing and Praying Together

Eating Tea



Teatime Church will be held on the 2nd Sunday of each month  
at St John's Church

For more information contact: Rev Becca Bell  
Rev Li Selman

[revbeccabell@gmail.com](mailto:revbeccabell@gmail.com)  
[revliselman@icloud.com](mailto:revliselman@icloud.com)



# Good Grief Cafe

St John's Church

There is no right or wrong way to grieve. We aim to bring the bereaved community together, with time to share experiences and to bring comfort to one another in what can be an isolating and lonely time. There is no agenda, just free tea, cake, chat and friendship. All are welcome, and please use this as an opportunity to invite someone.

Wednesday 20<sup>th</sup> April 3.00 to 5.00 pm  
Contact Geoff on 01579 362698



FOOD for  
THOUGHT



SUNDAY

24<sup>th</sup>

APRIL  
5.00 PM

St John's Church  
Pensilva  
A time of fellowship  
and informal worship  
with a shared afternoon tea



For further information  
& to arrange transport:  
Geoff 01579 362698



**Tuesday  
26<sup>th</sup>  
April**

**St John's  
Church  
Pensilva  
on the  
last Tuesday  
of the month**

**2.00  
To  
4.00 pm**

**Contact Kathleen  
01579 363686**



# **PENSILVA MEMORY CAFE**

*If you have memory problems or you are a carer for somebody who does, and would like to meet others who understand your situation, then join us at St John's Church*



**Thursday 28<sup>th</sup> April**

**2.00 to 4.00 pm**

**Contact Geoff on 01579 362698**



## Colourful Rainbow Run returns to Cornwall this summer

One of the UK's most colourful fundraising fun runs returns to Cornwall this summer. Rainbow Run is making a return to RAF St Mawgan near Newquay on June 18 after a two-year break due to the pandemic. Anyone over the age of five can take part and participants will get covered in powder paint as they walk, jog or run through different coloured paint stations along the 5km route.

Around 1,500 people took part in the 2019 event, raising £80,000 for Children's Hospice South West (CHSW) who run the Little Harbour children's hospice in St Austell. Rainbow Run is sponsored by Ann's Cottage.

Children's Hospice SW event fundraiser Kiley Pearce says: "Rainbow Run is the brightest fun for everyone and we cannot describe how much we are looking forward to bringing the event back to the people of Cornwall. It is such a fun event, and to see people reunited with friends and family, having fun and helping to raise vital funds will just be fantastic. If everyone could raise just £20 in sponsorship that could help fund one hour of care for children at Little Harbour."

Covid safety measures will be in place but there is also an option to take part in a virtual Rainbow Run at home. Early bird discount tickets at a 25% discount, £15 for adults and £10.50 for children, for a limited time only. Capacity for this event is limited and tickets must be booked in advance at [www.chsw.org.uk/rainbow](http://www.chsw.org.uk/rainbow)

A vibrant promotional poster for the Rainbow Run event. The background is a colorful, abstract splash of paint in shades of pink, purple, blue, yellow, and green. In the top left corner, it says 'Sponsored by:' followed by the logo for 'ANN'S COTTAGE SURF SHOPS CORNWALL'. In the top right corner, there is a logo for 'children's hospice SOUTH WEST' featuring silhouettes of people. The central text 'rainbow RUN' is written in a large, blue, stylized font. Below this, the text reads 'It's back! The brightest fun run for everyone'. Further down, it says 'Saturday 18 June 2022 ☺ RAF St Mawgan, Newquay' and 'Visit [www.chsw.org.uk/rainbow](http://www.chsw.org.uk/rainbow) to sign up'. Below that, it says 'Register early for discounted tickets' and 'You can also take part virtually!'. In the bottom left corner, there is a logo with a smiley face and the text 'Making the most of short and precious lives across the South West' and 'Registered Charity No. 1003314'. In the bottom right corner, there is a row of colorful smiley faces. A circular inset photo in the lower right shows a group of people, including a child, smiling and wearing paint-covered clothing.

## St. Ive Church

**Sunday 17th April    Easter Sunday Service    10:30 am**

We will be delighted to welcome congregations from our outer Cluster Churches  
Please note the earlier start time.

## St Ive Methodist Chapel

### *Services for April 2022*

<b>Sun 3<sup>rd</sup> Apr</b>	3 pm	Mr Bernard Melling
<b>Sun 10<sup>th</sup> Apr</b>	3 pm	Keith Mutton
<b>Sun 17<sup>th</sup> Apr</b>	11:15am	United Service at St Ive Church
	6.00 pm	Green Shoots, United Service at Bealbury Methodist Chapel
<b>Sun 24<sup>th</sup> Apr</b>	3 pm	Mrs Barbara Snowling

Chattermakers craft / chin wag group meet at Chapel fortnightly from 7:30pm. All are welcome - in fact, the more the merrier! For more details, please ring Kathryn on 01579 382334.

## **ST JOHN'S CHURCH, PENSILVA**

A united congregation of the Church of England & the Methodist Church

### ***Services for April 2022***

Sunday	3 <sup>rd</sup>	11.00 am	Rev Andy Day
Sunday	10 <sup>th</sup>	11.00 am	A Celebration of the life of the Rev Sue Hill
Sunday	17 <sup>th</sup>	10.30 am	Easter Day united service at St Ive Parish Church
Sunday	24 <sup>th</sup>	11.00 am	Mr David Wenmoth
		5.00 pm	Food for Thought
<b>Thursdays</b>		10.00 am	Morning Prayer Fellowship

### ***APRIL EVENTS***

Thursday	7 <sup>th</sup>	12 noon - 1.30 pm	Lent Lunch
Sunday	10 <sup>th</sup>	3.45 - 5.00 pm	Tea Time Church for children & families
Wednesday	20 <sup>th</sup>	3.00 - 5.00 pm	Good Grief Café
Tuesday	26 <sup>th</sup>	2.00 - 4.00 pm	Knit & Natter
Thursday	28 <sup>th</sup>	2.00 - 4.00 pm	Memory Café

*For further details of the services and events at St John's, or if you know of any illness or need in the village, please call Geoff, 362698 or Frances, 363718*

# Millennium House Coffee Shop Opening Hours

We are open Tuesdays, Wednesdays and Fridays, 9am to 1pm  
(to coincide with Post Office days).

Our intention is to open more days and for more hours as soon as Covid regulations allow.

Covid precautions are in place at all times, providing a safe environment for our customers.

## *All Being Well*

We are still open for three mornings a week. A maximum of six members can now attend at one time.

### Opening hours:

Monday, Wednesday and Saturday, 9am to 1pm.

Maximum six members at a time for each of three slots within each session: 9:00 to 10:20, 10:20 to 11:40 and 11:40 to 13:00

### **Prior booking is essential**

To book yourself in or for any enquiries, call in at the gym or telephone on **01579 363890**, during the opening hours listed above.

**22 years working in our local community to improve health, fitness and well being.**

# Badminton has restarted at Millennium House

Come and join our relaxed and friendly group.

**Mon & Tue 7:30 - 9:30pm**

For further info phone Nigel or Carol on 01579 363594 or 07885 798370



## **PENSILVA VILLAGE HALL**

**We are now open and back in business!**

Anyone wishing to book the hall for meetings, birthday parties or fundraisers, please contact Peter or Jackie Browning on **01579 363212** or email **peterpensilva@gmail.com**

Please note that as well as hall rent there is a coin meter for



## **MOBILE LIBRARY**



**The County Mobile Library** visits our area every four weeks, always on a Friday. You can now browse the shelves again, but you can still pre-order books if you prefer.

Next visits: **April 8, May 6, May 27 and July 1.** (The last two dates have been changed due to the Jubilee weekend.)

Stops at The Victoria Inn, Pensilva from 10.25 to 10.45am; and Quethiock bus stop from 11.00 to 11.20am.



## **Struggling with Sight Loss?**

iSight Cornwall offers practical help to people living with sight loss in Cornwall including:

Low Vision: Advice for low vision aids

Assistive Technology: Advice on products

Benefits Advice: Assistance to claim entitlements

Equipment Demonstration: Advice on gadgets

Social Clubs & Activities: Links to clubs & activities in the county

For more details Telephone 01872 261110 or visit

[www.isightcornwall.org.uk](http://www.isightcornwall.org.uk)

# MILLENNIUM HOUSE

COMMUNITY CENTRE, AND DYNAMIC EVENT  
VENUE IN THE HEART OF EAST CORNWALL



#### Conferencing

We have four meeting rooms for all your corporate needs.



#### Function Room

For parties, discos, or just larger events; with adjoining kitchen and bar.

### Our Facilities

#### Sports Hall

For sports or larger events requiring a stage, the sports hall is our biggest venue.



#### Coffee Shop

Providing tea, coffee and cake. And for something stronger, there's the Mel, a licensed bar.



**Enquire today:**  
**01579 363096**

[www.millenniumhouse.org.uk](http://www.millenniumhouse.org.uk)  
PRINCESS ROAD, PENSILVA, PL14 5NF

## What Do We Do?

From wedding to wakes, kids or adults, corporate or community, we can host and cater your event. If you have an idea that's not covered here, get in touch and see if we're the right venue for you.

#### We're also home to:

- ✓ The Mel bar
- ✓ All Being Well Fitness Centre
- ✓ Post Office
- ✓ Sunflower Park kids playground
- ✓ Extensive playing fields
- ✓ Community Library

# Bargain Corner Free Ads up to £50

Ads are free for items up to £50. £5 charge for items over £50. Please leave a note at Millennium House reception, ring the Parish Office on **01579 363096**, or email **parishpump@btconnect.com**.

**\*\*\* Please let us know when your item has sold \*\*\***

Windows 10 Computer Tower, 19" Dell monitor, Mouse & Keyboard, all for **£50**. All in full working order. **07483 832642**.

**2 short legged wetsuits**. 1 x 38" chest and 1 x 42" chest. Used once. As new. **£20 each**. **01579 362128**.

Pine **Dining Table** with 2 Carver Chairs Excellent Condition. **£75**. **01579 389231**.

**Long handled garden fork** in VGC. Ideal to prevent back strain when digging or removing shrubs. **£15**. Collection Only, **2 electric drills** in working order with chuck keys **£15** for the two.

Panasonic **Electric Typewriter**. **£50**  
Casio **Electric Organ** with stand **£100**  
**01579 363372**.

Brand New **Vinyl Flooring** for kitchens, bathrooms or hallways 13ft long x 2ft 11 inches wide. Colour light to mid grey. **£25**.

Wood and cast iron **Patio Set**. 2 chairs, bench seat and table. Buyer collects. **£45**  
**01579 363626**.

Early 19C / late 18C **cast iron fireplace faceplate** in GC, 36" high x 24" wide. Ideal as a fire faceplate or ornament. **£35**.

**Ladies Superdry Jacket**. Size Med. Good condition. **£15**. **01579 346982**.

Six coils of industrial steel cable now surplus to requirements **£35** the lot.

**01579 384658** (Safe Distancing if reqd.)

Canon IP2700 **Printer**. **£20**  
**Computer screen** 19" **£20**.  
Epson Perfection v350 **Scanner** Photo **£20**  
Sony Revia 42" **TV**. **£45**.  
All in working order. **01579 363200**

Set of 3 **suitcases**, red, vgc, Antler, **£40** ono. **07770 747353**. Pensilva area

Set of **Snow chains**, new and unused. Fit 14" to 19" rims, self adjusting. **£40**  
Pensilva **01579 362207**

**Please let us know when your item has sold**



# VICTORIA INN

The Cross, Pensilva. Tel: 01579 363933

---

## Opening Hours

Mon & Tues: Closed  
Wednesday: Lunchtime: Carvery from 12-2pm (see below)  
Evenings: 5pm to 9pm  
Friday: 5pm to 11pm  
Saturday: 2pm to 11pm  
Sunday: 12 noon to 6pm  
Times may vary when we have functions / live music.

---

## Meals on Wheels Service

Wednesday to Sunday (varied menu)  
Please give us a call if this may be of interest to you  
or if someone that you know may need our help.

---

## Our full menu is also available for delivery or to eat in.

Wednesday Evening - Homemade Pie Night (varies weekly)

Also includes a dessert. **£9.95**

Please check our weekly 'Specials'

Thursday Evening - Curry Night (Eat in or Takeaway) **£6.00**

Friday & Saturday Evening - Fish, Chips & Peas Special

Small **£5.95**, Large **£7.95**. Add a dessert for **£1.00**

Sunday Carvery 12noon to 3pm **£9.50** (Collection, Delivery or Eat in)

---

## Wednesday Lunch

This will be on the first Wednesday of each month. More will be added if  
necessary. April 6th 12-2pm.

Please phone 01579 363933 to book.

## Live Music

Saturday 2nd April - True Collision

Friday 15th April - Black friday

Find us online:  
fresh\_prop.co.uk



Top quality carpet, upholstery & hard floor  
cleaning services based in Callington

Long-established cleaning professional

Domestic & commercial

NCCA qualified & member

Steam cleaning & dry carpet cleaning

Tile & grout + natural stone clean & seal

Vinyl & LVT including Amtico & Karndean

Call 0800 3893393 or 07905 188459

Or email [nevil\\_fresh@msn.com](mailto:nevil_fresh@msn.com)

## TRADITIONAL STONE SERVICES

CLASSIC & TIMELESS  
STONE MASONRY  
AND LETTERING

MEMORIAL CLEANING

COMMISSIONS TAKEN

**01579 363693**

OR

**07507 782282**



Domestic Electrical  
Property Maintenance  
Interior & Exterior Work  
Carpentry :: Decking  
Kitchens :: Bathrooms  
Wall & Floor Tiling  
General Plumbing

**MCCARTHY PROPERTY MAINTENANCE**

**Electrical Safety  
Register**

incorporating  
ELECTSA + ECA  
Certification Ltd

HIGHLY REGARDED LOCAL BUILDER  
COMPETITIVELY PRICED  
COVERING THE SOUTH WEST

Contact Dominic

07968 599 675

01579 362 945

[info@mccarthypropertymaintenance.co.uk](mailto:info@mccarthypropertymaintenance.co.uk)

[www.mccarthypropertymaintenance.co.uk](http://www.mccarthypropertymaintenance.co.uk)



Maintaining and preserving our  
countryside for the benefit of all

Dry Stone Walls

Cobblestoning

Stone faced walls

Hedgelaying/steeping

Land management

All aspects of Landscaping

Mobile: 07539 296799 or

Email: [info@just-in-stone.co.uk](mailto:info@just-in-stone.co.uk)

## Naomi's Footcare Service

I provide a personal toenail-cutting service within the comfort of your own home.

To include removal of calluses, corns, hard skin, and reduction in thickening nails.

- ✓ Trained foot health practitioner.
- ✓ Fully insured
- ✓ DBS checked.

naomiturner84@gmail.com

07809 690385

## **Debbie Hicks - Counselling and Psychotherapy**

*Caring, confidential counselling for all.*

*I work in a therapeutic relationship to help you understand yourself better.*

*I offer a warm, approachable, relaxed environment for you to untangle your thoughts and emotions.*

**www.debbiehickscounselling.co.uk**

**Email: debbiehicks10@gmail.com**

**07851 133782**

*More info on my website or by contacting me.*



## **JP'S FRESH HOT FOODS**

**HOMECOOKED SPECIALS AND DESSERTS**

**INCLUDING REGULAR TAKEAWAY MENU**

**THURSDAYS - 4PM - 7PM, EAST TAPHOUSE HALL CAR PARK**

**FRIDAYS - 4:30PM - 7:30PM, PRINCESS ROAD PENSILVA**

**LOCAL FOODS FRESHLY COOKED**

**CASH OR CARD ACCEPTED - PRE-ORDERS WELCOME**

**TEL. 07966 994585**



**JP'S FRESH HOT FOODS**

**EVENTS TAILOR-MADE AND CATERED FOR WEDDINGS, BIRTHDAYS AND ANY CELEBRATIONS.**

**PLEASE CALL FOR ANY FURTHER INFORMATION.**



# Westwood Garden Maintenance



*Antony Watts*

*Grass Cutting, Clearance*

*Weeding, Turfing*

*Hedge Cutting*

*Patio Cleaning, Planting*

*Regular Visits / One-off Contracts*

*Residential & Commercial*

*FREE ESTIMATES*

01579 362019 [www.westwoodgm.co.uk](http://www.westwoodgm.co.uk) 07952 094472

## JPH Plastering and Rendering

Internal plastering

Internal and external rendering

Internal/external painting & decorating

Property maintenance

Landscaping and land management

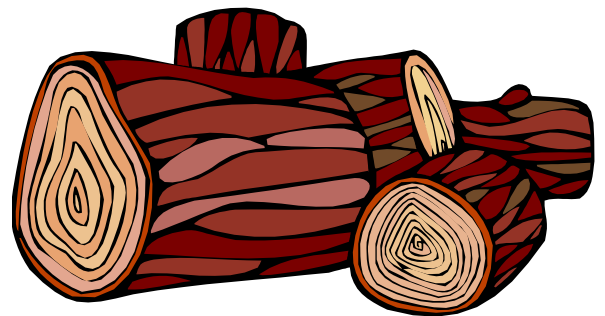
For estimates and no obligation quotes

contact Justin on:

**07539 296799** or

**info@just-in-stone.co.uk**

## SEASONED LOGS



**MIXED LOAD**

or

**HARDWOOD**

**Tel. Jonathan**

**Mobile 07966 070725**

or

**01579 363157**

## PENROSS

Rosecraddock Lodge Holiday Bungalows  
(Between Pensilva & Lisheard)

Ideal for family & friends coming to visit!



Refurbished in 2018. Sleeps 4. Electric, heating, bedding & towels inc in rent. Patio. Free wi-fi. Follow us on Facebook.

Sorry no pets or smoking.

Contact Julie Tucker on 01579 362221 or

email [penhargetfarm@gmail.com](mailto:penhargetfarm@gmail.com)

for 15% discount

## NICOLA GREENE

BSc (hons) Podiatry MChs

HPC Registered Chiropodist/Podiatrist

**Home Visit Practice treating all  
your foot care needs:**

- Nail Cutting
- Corns and Calluses
- Thickened Nails
- Dry Cracked Skin
- Verrucae
- Foot Pain
- Diabetic Foot Assessments
- Wound Care

**T: 01579 590027**

**M: 07786164205**

**E: [nicki\\_greene@yahoo.com](mailto:nicki_greene@yahoo.com)**

# Matt's Windows

**Repair of Windows, Doors  
& Glass Unit Replacement**

**T: 01579 641228**

**M: 07533 387368**

**Debbie's Care Services**  
**Tel. 0777 948 3230**

Hello, my name is Debbie. I am a local lady who has been working in the community for over 30 years.

I provide the following services and more!

- Assisting bathing / showering
- Preparation of meals
- Cleaning / Shopping / Ironing
- Companionship / Friendship and emotional support
- Assisting with mobility
- Day, Evening and Night Care

**MUST STEP**  
**PODIATRY**  
**HCPC Registered**  
**podiatrist**

Fully insured  
NHS experience  
Kind and caring

Home visits

**All your footcare needs**

Most areas covered

**Tel: 07522 577012 or**  
**07561 608296**

## **DO YOU NEED A HELPING HAND?**

Reliable, friendly,  
experienced, mature  
local resident offering  
the following services:

**Cleaning      Ironing**

**Shopping      Light Gardening      Dog Walking**

CRB/DBS checked and fully insured.      Competitive rates.

**Contact Jess:** Telephone or text: 07934 764 327.

Email: [homeangel77@yahoo.com](mailto:homeangel77@yahoo.com). Find us on Facebook







KV Accounting Solutions

ACCA

## Local Accountant offering fixed fee accounting services

With over 20 years experience, I am a fully qualified, friendly, local accountant

- |   |  |
|---|--|
| ✓ Annual Accounts for Sole Traders and Partnerships | ✓ Self Assessment tax returns                        |
| ✓ Book Keeping & Payroll                            | ✓ iXBRL tax filing                                   |
| ✓ Personal Tax Planning                             | ✓ Tax investigation Fees Insurance                   |
| ✓ Company Accounts                                  | ✓ Company Secretarial work                           |
| ✓ Business Support & Advice                         | ✓ Tax calculations for Sole Traders and Partnerships |

Kate Vaughnley FCCA - Chartered Certified Accountant  
Website : [www.kvaccountingsolutions.co.uk](http://www.kvaccountingsolutions.co.uk) or Email : [katevaughnley@gmail.com](mailto:katevaughnley@gmail.com)  
Telephone : 01579 364083



BA

Gas Services

NATURAL GAS - LPG - OIL

BOILER INSTALLATION

BOILER SERVICE & REPAIR

LONG WARRANTY FREE QUOTES

**07859848288**

[bagasservices@outlook.com](mailto:bagasservices@outlook.com)

533335

GAS  
**safe**  
REGISTER



## Affordable Counselling

Caring, confidential,  
non-judgemental

- Increased confidence and self esteem
- Help to cope better at difficult times
- Improved relationships
- Clarify confused thoughts & feelings
- Assertiveness
- Personal insight
- Improved emotional health
- Available for youth and adults

**Isabelle McGarahan BA, PGCE**  
**Dip in Therapeutic Counselling,**  
**Accredited ACC, DBS cleared**  
**[www.im-counselling.org](http://www.im-counselling.org) email:**  
**[isabelle@im-counselling.org](mailto:isabelle@im-counselling.org)**  
**01579 344090/07857326229**



**P BRADLEY PLUMBING & HEATING**

Email: [info@pbplumbingheating.co.uk](mailto:info@pbplumbingheating.co.uk)

Web: [www.pbplumbingheating.co.uk](http://www.pbplumbingheating.co.uk)

Facebook: @PBradleyPlumbingandHeating

**NO JOB TOO BIG OR SMALL**

**24hr Emergency Call Out**

**Based in Liskeard**

**Call Today 07598956760**

***"The complete bathroom  
installation service"***

**New bathrooms fitted,  
floor and wall tiling specialist**

**General Plumbing including:**

- Bathroom makeovers
- Dripping taps and burst pipes
- Pump and cylinder changes
- Radiator upgrades and additions
- Specialist in Leadwork
- No job too small
- No Call out charge



**Friendly Service, Quality Work**

**NO VAT**

**City and Guilds Qualified  
established 1983**

**Call William Hale on**

**Tel: 01579 362132 Mobile: 07826 699719**





Kiln Dried Firewood  
Kindling & Firelighters  
Eco Heatlogs  
LPG Bottled Gas  
Patio, BBQ & Camping Gas  
Coal & Smokeless Fuel



**0800 8021 223**  
sales@loganslogs.co.uk  
www.loganslogs.co.uk

## Heel 2 Toe Footcare

Tired Aching feet.

Corns, Hard skin, Verruca.

Fungal infected toe nails, or  
toe nails require cutting.

Diabetic feet also treated and  
regularly checked.

I can help to keep your feet  
looking and feeling good.

I am a trained Foot Health  
Practitioner to Diploma Level, fully  
insured & DBS checked.

I can do home visits via an  
appointment.

Call Penny: **07746 926146** for  
further information. **Please note  
new number May 2021.**

## MARK FITCH CHIMNEY SWEEP

- \* BRUSH & VACUUM
- \* CLEAN, RELIABLE SERVICE
- \* COVERING ALL S.E. CORNWALL
- \* DISCOUNT FOR MULTIPLE CHIMNEYS
- \* COWLS & GUARDS FITTED
- \* STOVES SERVICED



*Call  
Mark on:*

01579 350762  
07773 462643





# QUALIFIED RAYNOR MASSAGE THERAPIST

## RELAXING AND THERAPEUTIC MASSAGE TREATMENTS

Effective for many different types of chronic pain, sports injury, stress and tension related problems



CBD massage now available

APPOINTMENTS AVAILABLE AT

LISKEARD THERAPY CENTRE  
LISKEARD PL14 3JB

THE WELLBEING CENTRE  
LISKEARD PL14 6AT

Contact : Tina North

Phone : 07720 832322



Website : [massage-therapy-cornwall.co.uk](http://massage-therapy-cornwall.co.uk)



## R J Gardening & Handyman Services

All aspects of gardening and handyman work undertaken.

- ~Local and Trustworthy
- ~Hard Working
- ~Reliable and Experienced
- ~No job too small
- ~Competitive rates

Contact Raymond on:

07541 229064 or 01579 347622

[raymond\\_pearcegb@yahoo.com](mailto:raymond_pearcegb@yahoo.com)

Find us on Facebook.



Fencing  
 Paths & Steps  
 Turf & Astro turf  
 Driveways  
 Retaining walls  
 Digger work  
 Footings & foundations

Patios  
 Rendering  
 Decking

**And more**

Free no obligation quotes

**Call Rob on:**

**07518246666 or  
 01579 641802**

# Window Cleaner

Also any upvc cleaned

i.e. fascias, gutters, etc.

gutters cleared & unblocked

Please phone Rob

**07709 053464**

# Window Cleaner

**Save Costly Energy!**



**SOLARTEC** Windows & Conservatories Ltd

**'A' Rated WINDOWS & DOORS  
 at BEST PRICES EVER!**



Professionally fitted and finished by us with a  
 10 year ins. guarantee.  
 In all colours



**NEW**

**FACTORY SHOP  
 SUPPLY ONLY**

For all your windows, doors, conservatories,  
 fascia, trims, guttering and sealants

**7-10 DAY TURN AROUND ON WINDOWS,  
 DOORS and CONSERVATORIES**

**TEL: 01579 343425**

**FAX: 01579 344500**

WEBSITE: [www.solartecwindows.co.uk](http://www.solartecwindows.co.uk)

EMAIL: [sales@solartecwindows.co.uk](mailto:sales@solartecwindows.co.uk)

**KEEPING JOBS IN CORNWALL**

## PMB Book Keeping

Friendly Book Keeping Services:

Purchase and Sales Ledger

Bank Reconciliations

VAT returns - Making Tax Digital

Self Assessment Tax Returns

And More

Fully Qualified, Insured and  
 Licenced

T: 01579 683624

E: [pmboutsourcing@outlook.com](mailto:pmboutsourcing@outlook.com)





# Group Travel

Day Trips & Coach Holidays

Enterprise Park, Midway Road, Bodmin, Cornwall PL31 2FQ

## Coach Excursions & Tours 2022

24th - 29th April 2022	Chester, Liverpool & the Beatles
30th April 2022	Tobys Garden Festival, Powderham
6th May 2022	Steam Train & Kents Cavern
19th May 2022	Cruise the English Riviera
14th June 2022	Agatha Christie's Greenway House
8th - 9th July 2022	Hampton Court & Kew Gardens
17th - 21st Sept 2022	Llandudno, North Wales



Visit our website for all our excursions & tours and download a PDF version of our 2022 brochure.

Call: 01208 77989  
for bookings and brochure

website: [grouptravelcoachhire.co.uk](http://grouptravelcoachhire.co.uk)  
email: [grouptravelcornwall@btconnect.com](mailto:grouptravelcornwall@btconnect.com)  
facebook: [facebook.com/grouptravelcwill](https://www.facebook.com/grouptravelcwill)

## Bodmin MOT Centre

**01208 77989**

Garage Services  
 MOT Testing Station  
 Classes 4, 5 & 7  
 Servicing & Repairs  
 High Vehicles & Motorhomes  
 Brake Test & Headlight Alignment  
 Pre MOT Inspections  
 Annual & Interim Vehicle Servicing

Commercial interim inspections available including brakes and lights

Helping you stay compliant

Bodmin MOT Centre at Group Travel  
Enterprise Park, Midway Road,  
Bodmin, Cornwall PL31 2FQ

## Martin Hoare – Local, Reliable, Competitive



WHEEL DIGGER FOR HIRE  
ALSO AVAILABE 'BREAKER'  
AND NEW CONCRETE  
'CRUSHER BUCKET'

ALL AT COMPETITIVE RATES

GROUND WORKS  
DRAINAGE  
NEW DRIVEWAYS  
SEPTIC TANKS &  
'SOAK AWAYS' INSTALLED



LASER LEVEL FOR HIRE  
QUOTES AVAILABLE



Phone 01579 363517

or

Mob 07863 291213





# INDEPENDENT FAMILY FUNERAL DIRECTORS

Supporting families to arrange funerals with sensitivity, dignity and care.

- Flexible, caring approach, tailor-making funerals to suit your needs and budget.
- Open and transparent, affordable pricing.
- Free bereavement support sessions, open to all in our community, first Wednesday of the month, 10am - 12pm.
- Prepayment Funeral Plans available

For details of our services and prices, visit our website.



**01579 362358 | [www.fdhallfunerals.co.uk](http://www.fdhallfunerals.co.uk)**



Avalennek, Caradon Town,  
Upton Cross, Liskeard  
Cornwall PL14 5AR  
Telephone 01579 363598  
Mobile 07901 538132  
[chrisrounsevell@tiscali.co.uk](mailto:chrisrounsevell@tiscali.co.uk)

## HOG ROAST EQUIPMENT HIRE AND MEAT SUPPLY

Hog Roasts For Those Special Occasions  
Self Catering or Hassle Free Service  
Everything done to your special requirements

**CHRIS ROUNSEVELL**  
TRADITIONAL BUTCHER

Come and visit our recently updated  
**Tile & Bathroom showroom** in PENSILVA

We offer a generous discount to all Pump Readers

Unit 24 Pensilva Ind Est, St Ive Road, Cornwall PL14 5RE 01579 362264



**CORNWALL TILE**  
CENTRE

Pensilva Showroom

Open Mon - Fri 8.30am - 5pm  
Saturday 9.00am - 1pm

Tiles & Mosaics for:

Bathrooms & Kitchens Living Areas Conservatories  
Patios & External Areas Wet Rooms & Spas Swimming Pools  
& All Commercial Applications

 **atlas concorde**

[www.cornwalltile.com](http://www.cornwalltile.com)

**OPEN FOR RETAIL, TRADE & COMMERCIAL ENQUIRIES**





THE HOME OF WOOD

## BULK DISCOUNTS AVAILABLE ON OUR 30 YEAR SERVICE LIFE POSTS



OUR GOLD TREATED STAKES AND POSTS ARE THE ONLY ONES AVAILABLE IN THE UK THAT ARE APPROVED BY THE WPA BENCHMARK FOR 30 YEAR SERVICE LIFE

For more information please contact one of our team



Bond Timber, Bake Sawmill, Trerulefoot, Saltash, Cornwall,

PL12 5BW

01503 240 308 [stacy@whbond.co.uk](mailto:stacy@whbond.co.uk)



# Pensilva Stores

**Amazing Value**

**Premier**

a great deal more from your local store

Mon-Sat. 7:00 AM. - 9:30 PM.  
Sunday 8.00 AM. - 9:30 PM.

- ✓ Fantastic Special Offers every month!!! (See store leaflets)
- ✓ Come and Check out our great deals on Wine, Beer and Spirits
- ✓ Local Produce: Homemade Butter and Clotted Cream, Meat from our local butcher
- ✓ Cornish Fresh Fruit and Vegetables
- ✓ Fresh Bread, Pasties and Cakes
- ✓ Take Away Coffee, tea and hot chocolate
- ✓ Newspapers and Magazines, Greeting Cards
- ✓ Paypoint, Lottery

\* **Free to use ATM** \*

\* **Card Payment** \*

*Friendly Staff + Service with a Smile !!!*

**Pensilva Stores is a family run business who have been serving local people and visitors for more than 21 years.**

Higher Road, Pensilva, Liskeard, Cornwall PL14 5NQ

Tel: 01579 362547

# MENDOLOGY

## Garage Door Specialist

- Repairs
- Servicing
- Installations


Out of hours service  
call Dave anytime 07974 442645

**MENDOLOGY** COMMERCIAL DOORS LTD  
www.mendologydoors.co.uk

# 01579 363760

# PensilvaCars

01579 363516

- ✓ MOTs Class 4
- ✓ Service
- ✓ Repair
- ✓ Tyres
- ✓ FREE Courtesy Car
- ✓ Car & Van Sales
- ✓ Diagnostics
- ✓ Air Conditioning
- ✓ 

**We have offered a supply, fit & balance of tyre service for 10 years at competitive prices.**

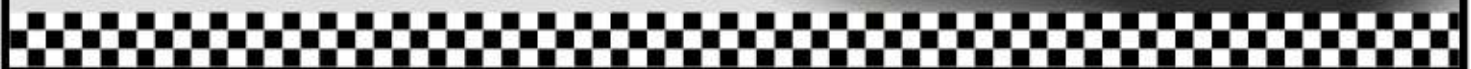
**Most of our tyres can be supplied the same day.**

**LOCAL RECOVERY £45.00**

**[www.pensilvacars.co.uk](http://www.pensilvacars.co.uk)**

**[pensilvacars@hotmail.co.uk](mailto:pensilvacars@hotmail.co.uk)**

We can service and repair your car to manufacturer specification, keeping your dealer warranty without main dealer expense.





# KEITH RICHARDS

## Motor Body Repair Specialists

A family run business with fully equipped & maintained workshops & a focus on  
Customer Care

- ◇ Motor Body Repair Specialist
- ◇ Mechanical Repairs
- ◇ Servicing to All Makes & Models
- ◇ Computer 4 Wheel Alignment
- ◇ 24 Hour Recovery Service
- ◇ Renovations & Re-sprays
- ◇ Member of RMI (Retail Motor Industry Federation)
- ◇ Latest Diagnostics (including specialists for VW, Audi, Seat, Skoda & Vauxhall)

With over 30 years' experience we aim to provide you with:- Value for Money -  
Friendly Service - Professional Approach - Expert Advice that you Can Trust  
(Visit our website for more details)

Pensilva Industrial Estate, St Ive Road, Pensilva, Liskeard, Cornwall PL14 5RE

Tel: 01579 362593

Email: [keith@keithrichardsmotorbody.co.uk](mailto:keith@keithrichardsmotorbody.co.uk)

Fax: 01579 363194

Website: [www.keithrichardsmotorbody.co.uk](http://www.keithrichardsmotorbody.co.uk)



Wm. Newham & Sons Est. 1835

Proprietor Robbie Savill AWCB

## CHIMNEY SWEEPS & BLACKSMITHS



CHIMNEY SWEEPING

BIRD GUARDS, COWLS & POTS FITTED

CCTV INSPECTIONS & SURVEYS

STACK REPAIRS & REBUILDS

RIGID STEEL SYSTEMS ERECTED

STAINLESS STEEL and PUMPED CONCRETE  
CHIMNEY LINING

STOVES SUPPLIED, INSTALLED & REPAIRED

FIREPLACE ALTERATIONS & RENOVATIONS

FULL RANGE OF FIREPLACE FURNITURE  
made to order

**01579 347777**

## ADVERTISE HERE!

For just **£10** per month incl VAT.

**2 MONTHS FREE** for a 12  
month order. i.e. **£8.33 incl VAT**  
per month for 12 mths

See the full tariff on page 3

**One thousand copies per  
month** distributed free of  
charge to households in the  
Parish of St Ive.

# J. J. Child

**Plumbing and heating engineer.**

**Oil appliance service, repair and breakdowns.**

**Over 30 years experience**

**Call John: 01579 362336 or 07837 921086**





# Pensilva & St Ive Post Office Service

**Pensilva:** Through the coffee shop on the 1<sup>st</sup> floor of Millennium House

**Tuesdays:** 9am to 1pm.

**Wednesdays:** 9am to 12 noon.

**Fridays:** 9am to 12 noon

**The Millennium House  
coffee shop is also open on  
these mornings.**

.....

**St Ive:** At St Ive Village Hall

**Wednesdays:** 10:30 to 11:30am

**Coincides with the St Ive  
Village Hall Coffee Morning**

## Saint Ive Parish tree-planting survey

Please let us know about any trees that you plant within the Parish. We will include them in our own survey and we will notify the Forest for Cornwall on your behalf, if appropriate.

email [posicrp@gmail.com](mailto:posicrp@gmail.com) or message us on Facebook

[www.facebook.com/posicrp](http://www.facebook.com/posicrp) or phone 01579 364016.

Pictures very welcome.

