

# THE PARISH PUMP



March 2022  
Edition 484



**The Newsletter for the Parish of St Ives**



Many thanks to Ray Roberts for this lovely photo of Golitha Falls which, he informs us, was taken some time ago. Ray also says that that this was where King Doniert, the last king of Cornwall, drowned. (Also, probably, some time ago.)

## Disclaimer

The articles appearing in this magazine do not necessarily reflect the views of the Parish Council nor of the Parish Pump Editor.

## Parish Councillors Telephone List

Alan Moss (chair)	01579 362064	Ivor Vaughan (vice-chair)	07979 934604
James Bruce	07411 192645	Marlene Carr	01579 362919
Martin Corney	01579 382450	Sandra Doe	01579 363096
Rosemary Farley	01579 384810	Nigel Gisby	01579 363096
Ron Greenhough	01579 363096	Tony Hodson	07973 536964
Nigel Libby	07968 891814	Paul Mann	01579 363757
Craig Vaughnley	01579 364083		

## Meetings of St Ive Parish Council

**Meetings are now being held when possible. Please see the Parish Council website for meeting dates, agendas and minutes.**

**<http://st-ive-parishcouncil.gov.uk/minutes-agendas/>**



**Devon & Cornwall Police**  
Building safer communities together

 **101**

Minicom 18001 101

## Police Community Neighbourhood Office

Your Community Support Officer is PCSO Steve Edser 30173.

email: CIOSNBMLLST@devonandcornwall.pnn.police.uk

To report a crime call 101 or go to [www.devon-cornwall.police.uk](http://www.devon-cornwall.police.uk)

In an emergency call 999

## Contact details for St. Ive Parish Council and for Millennium House

Address for correspondence: Millennium House, Century Square, Pensilva PL14 5NF

General Parish matters should be raised initially with the Parish Clerk, Jenny Hoskin, who will present them to the Parish Council.

Telephone: 01579 363096, email: [stiveparish@btconnect.com](mailto:stiveparish@btconnect.com)

For accounts matters for the Parish and for Millennium House contact John Body, Finance Officer: 01579 362102, email: [millenniumhouseadmin@btconnect.com](mailto:millenniumhouseadmin@btconnect.com)

Millennium House enquiries and reservations: 01579 363096

email: [millenniumhouse@btconnect.com](mailto:millenniumhouse@btconnect.com).

On the web: Millennium House Website: [www.cornwallvenue.com](http://www.cornwallvenue.com)

Parish website: [st-ive-parishcouncil.gov.uk](http://st-ive-parishcouncil.gov.uk) Facebook: [facebook.com/stiveparishcouncil](https://facebook.com/stiveparishcouncil)

## PARISH PUMP ADVERTISING COSTS

The prices for advertising in the Parish Pump are as follows:

The below prices include VAT at 20%:

**Quarter page: £10:00 per month or £100:00 for 12 months.**

**Half Page: £20:00 per month or £200:00 for 12 months.**

**Full Page: £33:00 per month or £330:00 for 12 months.**

## Parish Pump Information and Contact Details

To contact the editor please email: [parishpump@btconnect.com](mailto:parishpump@btconnect.com)  
or phone the Parish office: **01579 363096**.

Hardcopy submissions by post or by hand to the Parish office, Millennium House, or Millennium House reception.

Softcopy submissions: By email to the editor in MS Word, MS Publisher, pdf, Tiff or jpeg. Please use A4 pages and minimum 16 point font as the Pump is initially produced in A4 size and reduced to an A5 booklet at the printing stage. If in doubt please contact the editor.

Bargain Corner free ads by email to the editor or drop off at the Parish Office.

Deadline for the Parish Pump is STRICTLY 15th of every month

## From the Editor

Hello all

After all those named storms that came calling, it's actually starting to look a little bit like Spring as I write this. Who knows what it will look like by the time you read it. Anything could happen!

There is an important and interesting announcement on page six of this month's edition. These are early days in what might turn out to be a lengthy process; we will have to wait and see what emerges.

The plans for the Queen's Platinum Jubilee are also taking shape, as you will see on page seven. What an occasion that should be!

Also taking shape is the St Ive Community Garden. As is the way with gardens, we cannot expect immediate results, but the potential is there for something a bit special in a few years' time. (see pgs 12-13).

Meanwhile, the Growing Project is looking to add to its team of volunteers as they move into their busy time of year. If you enjoy gardening and have some time to spare, why not get involved? Either with the garden or with the organisational side of things (pg 16).

All of the above and the rest of this month's content could be summed up by saying "we are slowly getting back to normal". More going on; more things to do; more chances to mix with people again. Fingers crossed.

Keep well everybody! That's the main thing. Joe.

### St Ive Village Hall

Gardening Club	1st Monday monthly 7:30pm	01579 382762
St Ive Snooker Club	Monday & Thursday 7:00pm	01579 382315 R Bunkum
Yoga	Tues 4:30-6.00 & 7:00-8:30pm	07947 785554
Post Office	Wednesday 10:30 - 11:30 am	
Coffee Morning	Wednesday 10:30 - 12:00	
Art Group	Fridays 11:00am - 4:00pm	07772 639942

**St Ive Village Hall is available for hire, £5.00 per hour.** Includes the use of the kitchen & electric (excluding wall heaters, which are on a £1 coin meter)  
**Contact Amanda Eveson on 01579 388782**



## **Chairman's Report Mar 22**

The Queen's jubilee celebrations will be on the 3rd, 4th and 5th of June. We have a group putting together a number of activities covering the 3 days. Further details in this edition of the Pump.

On the 10th February our parish was visited by HRH the Princess Royal, Princess Anne. She was invited to see the amazing work being carried out at Merryhue Farm. She was then invited to plant an apple tree in memory of her visit.

Millennium House belongs to the community, nobody is excluded from using it. The Parish Council administers the Parish and its finances which includes MH. Some of our achievements so far: three new bus shelters; the dangerous MH carpark was resurfaced and the corroding roof replaced; benches have been refurbished or replaced; and much more.

Setting up youth groups, arranging parties or entertainment, we leave to the experts. The Guides, Rainbows and Cubs have all gone as there was no one to take over from the volunteers who retired.

If these things are wanted in our community, people need to come forward to organise them.

Well, the clocks go forward this month and we're heading into Spring.

Stay safe

Alan Moss

### **Opening times for the Mel Bar at Millennium House**

Thursdays            5 - 11 pm.

Fridays                5.30 - 11 pm.

Saturdays            5 - 11 pm.

Also Tuesdays       5 - 11pm but only when the Function Room is in use.

These times may change depending upon footfall.

## **A STATEMENT FROM ST. IVE PARISH COUNCIL**

A couple of months ago, the CEO of YMCA Plymouth, Tom Lavis, along with two of his managers, were invited by the Directors of the 'All Being Well' gym in Millennium House (MH), to discuss the running of the gym, and to see if they would be interested in taking it on. During discussions, they commented on how impressed they were with MH.

One thing led to another and the Parish Council was approached by Tom Lavis with a view to leasing the whole of MH in order to realise its full potential as a centre for the community and surrounding area. We invited him to give a presentation to the council, explaining his ideas.

Following the presentation, the Council felt that, for a well-known charity, with a wealth of experience in the leisure industry, to manage MH, could be exactly what MH needs to secure its future. So, we have invited them to work with us on a Business Plan for us to evaluate.

No commitment will be made until both parties are happy with the plans and have sought legal advice. We will, of course keep the people of the parish informed at every step, and a public meeting will be arranged for you to meet Tom Lavis and ask questions.

## **A MESSAGE FROM YMCA PLYMOUTH**

The Parish Council has invited YMCA Plymouth to develop a business plan proposal for the management of Millennium House. The agreement in principle follows a number of discussions with the charity about how they can support the facility going forward. A detailed plan will be proposed to the Parish Council in the coming months, along with further discussions about how a potential partnership can work in the interests of local people.

Tom Lavis, CEO of YMCA Plymouth said:

“YMCA Plymouth is delighted to explore how we can work together with St Ive Parish Council to enhance Millennium House, for the benefit of parish residents. As an independent charity, we’re committed to creating thriving and sustainable community hubs that meet the needs of local people. Like Millennium House, our successful centres in Plymouth and Torpoint serve the whole community by providing a range of opportunities, including health & wellbeing, education, and family activities.

“We are looking forward to working with the Parish Council to explore the potential ways we can enhance the centre for everyone in the Pensilva and St Ive community.”



# **PENSILVA CELEBRATIONS**

**Friday 3<sup>rd</sup> June** – Village Tabletop trail, Children's afternoon **Bingo**. Family evening **Barn Dance** with a live band.

**Saturday 4<sup>th</sup> June** – Pensilva **Gala day** (the usual fun of the fair!) plus a Regal wheelbarrow parade.



**Sunday 5<sup>th</sup> June** – **Big Jubilee Lunch**  
12noon – village get together.

Also including - Royal Scarecrow & garden competitions.

**We need you! We are open to all suggestions!**

**Gala day** – would you like to run a stall for your own cause?

Get in touch and we will find you a space!

Do you have any other activity you would like to bring along?

**We need** - white and blue fabric (sheets etc) to make into flags. Drop off at Millennium House.

Scarecrows, gardens and barrows – more details and forms to follow.

**Were you in the village in 1953?** We'd like to hear from you!

Please get in touch with [alanmosspc@gmail.com](mailto:alanmosspc@gmail.com) or drop your details into Millennium House to let us know any way in which you would like to be involved.

St Ive Parish Community Resilience Project CIO is looking for a **part-time Co-ordinator** to work on the projects they organise.

This is a small group of volunteers and the position will report to the chair of the group.

The role will be on a self-employed basis, mainly home-based, and requiring considerable flexibility in the hours worked from week to week. On average the role will be for four hours per week but, depending on upcoming events, significantly more hours may be required in some weeks and none in other weeks.

The rate for the role is £12 per hour worked, (£23,088 pa pro rata).

For more details and for how to apply, email [posicrp@gmail.com](mailto:posicrp@gmail.com).

Closing date for applications: March 11th, 2020.



## **NEW FACEBOOK GROUP FOR ST IVE VILLAGE RESIDENTS**

Join our St Ive Community Facebook group!

Our new Facebook group is the perfect place to find out what's happening in your community. You can discuss local issues, share photos and videos, or just chat with other residents about anything that's on your mind. It's also a great way to get involved in village life – whether it be by helping with events or volunteering for one of our committees. We want this group to be an open space where everyone feels welcome and included. Come join us!

There are lots of ways you can get involved within the St Ive Community Group - from organising events and activities to sharing information and ideas, running for committee positions or simply joining in the conversation online. Whatever you choose, we hope it will help make St Ive even better than it already is! And if there's something we haven't covered yet but would like to know more about please let us know as well so we can add it into our plans going forward. We're always looking for new members who want their say on how things work here too! If that sounds like you then come and join us!

**[www.facebook.com/groups/stivecommunity/](https://www.facebook.com/groups/stivecommunity/)**





## Pensilva Film Club

Well, we had a small (but perfectly formed!) audience who braved the tail-end of storm Eunice for our showing of James Bond, No Time to Die. This film attracted some new members, many of whom were men, so I'm glad we were able to put on something to appeal to a different audience. I hope they will want to return to see some of our other screenings. I can't profess to be a Bond fan but, in



actual fact, rather enjoyed this one and the 2hr 50min flew by. We were rewarded by a dry and bright evening as we left Millennium House.

Our next screening, on Friday 18th March, is the acclaimed movie "Amonite" which follows the story of Mary Anning, a fossil hunter of the 1800s who made some significant finds but was, normal for the times, overlooked due to being a woman. It also charts her relationship with another woman that, in order to make ends meet, she undertakes to care for. Kate Winslet takes the leading role for which she has received many great reviews.

As usual we open at 7pm for the movie at 7.30. Price of admission is £6 for new members and £3 for existing members. We would appreciate it if masks could be worn at the door and until seated.

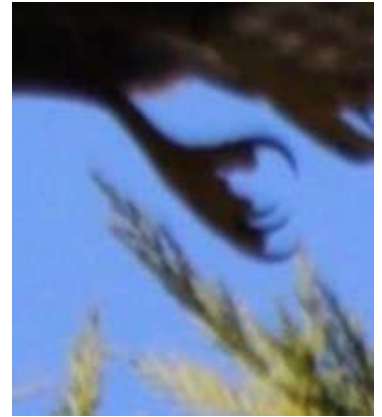
Many thanks for your continued support.

## TWELVE YEARS OF WILDLIFE WATCHING IN THE PARISH OF ST. IVE

Since moving to the Parish at the end of 2009, I have been photographing and recording the wildlife which I see at my home on the edge of Pensilva on a daily basis. This month's choice came to mind when I saw two birds perched next to each other on a telegraph pole, reminding me that the breeding season is just around the corner. It is...



...The Buzzard



This large powerful bird of prey is a scavenger as well as a hunter. The detail from the above photo shows its powerful talons for tearing meat from carcasses as well as catching prey. They have an average wing span of 120cm, the females being slightly heavier than the males. They catch rabbits and smaller mammals and can suffer when rabbit populations are hit by myxomatosis. Unusually for raptors, when food is scarce they will eat beetles, worms and other invertebrates. I have seen a young buzzard hunting for worms in a field by where we live. From my house I can look across to Pentiddy where they nest. In our first year here I was treated to an intimate view of their breeding season. The following are the notes I made then:-

### **March**

Seen with increasing frequency with calling and flying displays over valley as attention gradually focussed on nest first commented on in January. Male (?) would go to nest and try to entice female (?) to join him. For about a month there seemed to be competition with a third bird sitting and calling on a nest further down the valley.

**March 16th** - Seen mating in nesting tree.

**25th** - First confirmed sighting of bird sitting on eggs. (from Pentiddy Woods)

Birds seen and heard less once sitting on nest.

**May 1st** - Both adults seen leaving nest for 1st time since eggs laid - eggs hatched?

**5th** - Carrying twig to nest - repairs or extending?

- Seen less often since eggs laid - partly because tree leaves now covering nest and partly because slipping in and out more quietly than when "courting".

- Although seen returning to nest most days, have never seen prey carried in.

July - From start of month, calls heard from wider area, but nest still in constant use.

27th - first confirmed flights of young bird. Parents flying across valley, roosting and calling youngster to follow.

28th - Flying lessons continued

31st - Youngster appears to be left alone. Seen fly to small tree at edge of paddock. Called but no response. Dropped into ditch below and stayed there for some time, calling only when heard adult in distance. Eventually flew away.

N.B. Juvenile easily identified by higher pitch call.

August 1st - Young buzzard seen whilst out walking on ground in field near moor. Was calling and seemed 'lost'. No response from parents.

20th - Young( ?) buzzard landed on bird feeder!

September - Buzzards gradually seen less. Sightings closer to number pre mating season.

- Call of youngster now no longer easy to distinguish.

Following a drastic drop in numbers in the first half of the 20th century, buzzards are now our commonest bird of prey and can be seen in almost any rural area.

You are most likely to see them soaring above as in the photo to the right or on telegraph poles where they are often sat.

Unusually the one in the photo below has its wings spread to cool off on a hot summer's day. It is not unusual to see buzzards being harassed by crows or

gulls. It always amazes me that they so rarely use their talons to fight back, but seem to just move away. Indeed, in 2015 they were ousted from their nest by crows who took it over, forcing the buzzards to start again further down the valley. Have a look up when you hear particularly noisy gulls or crows - it may be the buzzard they are chasing!



HAPPY WILDLIFE WATCHING!

HILARY



**Positive + Resilient + Together**

## **St Ives Parish charity receives a £10,000 lottery grant - to improve our future!**

Thanks to a lottery grant, Parish of St Ives Community Resilience Project (POSICRP) is launching a year-long programme of action, bringing members of our community together to design a future for our local area that is good for our future, the future of the planet, and all its people.

Over the next year, our small group of local volunteers will be offering events for all ages and interests. There will be social, learning, creative, sharing and practical events, site visits to inspiring projects, and community get-togethers.

By the end of 2022, we will have helped our community create a plan that maps the path to a stronger, more connected community. Events to include:

**A day-long 'The Art of Invitation' workshop**, run by Ruth Ben Tovim, a professional artist who uses the transformational power of the arts to run creative and engaging events. Attendees will learn new creative tools that can help projects, groups, communities and organisations to reach and engage people more effectively. Saturday 26 March, 10am - 5pm, Millennium House, Pensilva. Contact [posicrp@gmail.com](mailto:posicrp@gmail.com) or Tel: 01579 363775.

**A 2 day 'Introduction to Permaculture' course**, by Klaudia Van Gool (in partnership with Tregovenek Community Benefit Society). Permaculture is a design process ensuring any projects, from food-growing to building design, consider people, planet and the creation of a sustainable fairer world for us all. This will be a lively and participatory weekend, forming a collective understanding for future local designs. 21/22nd May, Pentiddy Woods, Pensilva. Contact [tregovenek@gmail.com](mailto:tregovenek@gmail.com) Tel: 01579 363775.

**Volunteer days at the new St Ives community garden.** See report opposite and the POSICRP Facebook page for details or call Fiona on 07768 130520.

Events are open to all who are interested in building community resilience. Where numbers are limited, priority will be given to residents of St Ives Parish.

The grant presents an incredible opportunity for us to come together as a community and to respond, creatively, to the challenges of our times.

We would like to thank Lottery players for making it possible for us to design a future for our local area that is good for our planet and our community. Parish of St Ives Community Resilience Project is one of many organisations that has been supported by The National Lottery Community Fund, the largest funder of community activity in the UK, to deliver vital work tackling climate change.

We intend to appoint a paid coordinator to work with us on this exciting project. Please see the separate notice in this edition of the Parish Pump.



## First Volunteer Day held at St Ive Community Garden

On a rather rainy and blustery day, Saturday 29<sup>th</sup> January, 15 volunteers set to work to build 12 tree enclosures (right) and create a dead hedge as first steps towards creating our community garden behind St Ive Church.

Dead hedges (below right) are piles of branches and twigs arranged to form a barrier. Using surplus branches in this way is good for wildlife - especially for small mammals and birds - because it provides shelter and protection predators, wind and rain. It's also good for insects: dead hedges in effect create a linear eco-pile.



We also installed a new pedestrian gate (above left) to allow access to the garden from the Churchyard.

The day was quite hard work, but everyone worked really well together, had fun, and ate quite a lot of cake!

Our next 2 volunteer days, in February and March, will be to plant the nut and fruit trees and hedging plants to create 2 new hedges. We will announce the dates on FaceBook once the trees arrive. Please come along to help, to provide encouragement, or to eat cake. Contact us via the Facebook page, <https://www.facebook.com/posicrp/> or by email [posicrp@gmail.com](mailto:posicrp@gmail.com) or give Fiona a call on 07768 130520.



**Positive + Resilient + Together**





**UK Greendeal**

# Helping you save money and the environment.

UK Greendeal is an independent eco-surveying company. We look at all aspects of residential properties looking to improve their carbon footprint and reduce their energy emissions, assisting the government with the mammoth task of bringing all greenhouse gas emissions to net zero by 2050, whilst avoiding any costs to our customers.

The core of our work is to utilise government ECO3 funding to provide free fully funded energy saving measures to you. Once we identify possible improvements we will guide you through the funding process from initial survey, to placing your work with a government approved, national award-winning installation company, to improve your properties energy efficiency, yet not costing you a penny.

**If we CAN help you, we WILL. Call John  
your local parish surveyor today:**

**07462 450184**

Free options available include the following:

- Cavity Wall Insulation (Bonded bead insulation is used NOT blown mineral fibre that is unsuitable for Cornwall – Fully funded )
- External Wall Insulation (solid builds – Fully funded)
- Internal Insulation inc plaster boarding & skimmed finish (solid builds - Fully funded)
- Loft Insulation up to 270mm (Fully funded)
- First Time Heating Systems (Fully funded)
- Electric Heating Upgrades (Fully funded)
- Mains Gas Boiler Replacement (Funded with possible contribution on a case by case basis, boilers will be checked for eligibility during your survey or enquiry meeting.)

UK Greendeal work within the Ofgem regulated ECO scheme, as well as partnering with numerous local authorities to offer you free\* insulation measures via your local authorities LA Flex Scheme.  
\* Subject to survey - Terms & Conditions apply.

**[www.ukgreendeal.org.uk](http://www.ukgreendeal.org.uk)**





**UK Greendeal**

# Helping you save money and the environment.

**Reduce your bills and warm your home.**

All the insulation work we provided comes at no cost to yourself (in fact you have already paid for this through your energy bills) and will come with a 25-year guarantee backed by the governing body of insulation CIGA.

It's estimated that 25% of all heat loss from an uninsulated home is through the roof which makes insulating the roof space one of the most cost-effective solutions. It can save you around £250 a year.

Cavity Wall Insulation with bonded beads is a quick, hassle-free way of insulating your home. 45% of a property's heat can escape through cavity walls and an average property will save £300 a year with cavity insulation.

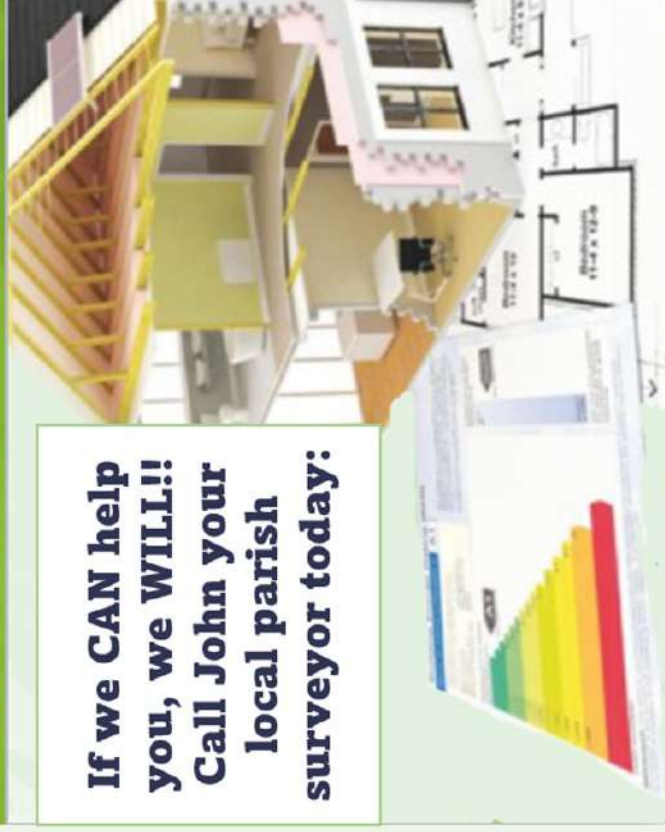
If your house was built before 1919, it's likely that it was built with solid walls. Twice as much heat escapes from solid walls than cavity walls, so internally or externally insulating solid walls can considerably cut your heating bills – you could have an additional £450 per year in your pocket.

Upgrading your heating to a more modern and energy efficient system reduces both your energy consumption and bills.

We use only the highest quality  
BBA products and we're a Green  
Deal approved installer PAS2030.



**If we CAN help  
you, we WILL!!  
Call John your  
local parish  
surveyor today:**



**07462 450184**

**[www.ukgreendeal.org.uk](http://www.ukgreendeal.org.uk)**

UK Greendeal work within the Ofgem regulated ECO scheme, as well as partnering with numerous local authorities to offer you free\* insulation measures via your local authorities LA Flex Scheme.  
\* Subject to survey - Terms & Conditions apply.



## The Growing Project is looking for volunteers!



The Growing Project is on the look-out for volunteers to help with practical work and to take on management roles.

Becky Payne runs the day-to-day operations, along with five regular volunteers but, with the spring growing season just around the

corner, she is looking for some extra help with sowing, planting, harvesting and packing, as well as for anyone with DIY skills, or the expertise needed to run a Community Interest Company (CIC).

A number of innovations are planned for the coming months, including a full upgrade of the site's utilities and facilities.

"We are a happy, hard-working team and we grow a large variety of organic crops," said Becky. "But with spring coming, we could do with a few more pairs of hands. An hour a week would be a huge help. As well as knowing they're helping a worthwhile community cause, volunteers also find working on the land can be highly therapeutic for their own lives.



"Being outdoors, and active, eating fresh produce and working as part of a caring team, whilst benefiting the community is what we are all about. We are looking for volunteers for numerous jobs, but if you just want to come along for some relief from the stresses of life, you are more than welcome."

Anyone interested in volunteering, or in finding out more about The Growing Project can contact Becky on 07854 353865 or via the Growing Project Facebook page.

**"Grow vegetables and grow people."** Ruth Wilson, Growing Project founder.

## Pensilva WI February report

We all know about the Black Death which occurred during the 1300's, but what else was happening at that time? Well, in February Ann Sutcliffe came along to Pensilva WI to talk about 'Women of the Middle ages', particularly Hilaria de Cotehele and the 14<sup>th</sup> century in general. Hilaria (born Eleanor) was born in 1332/3, the daughter of William de Cotehele and Songerunde de Donne and had a brother Ralph. She married William



A medieval costume displayed at the meeting.

Edgecombe in c.1353. At the end of her very interesting talk, Ann told us that while investigating her own ancestry, she discovered that Hilaria was her 12x great grandmother! Wow, I bet we all wish we had famous people in our own family.

Birthday cards and posies were presented to Rosemary Farley, Margaret Hanger, Jacqueline Olver and Julie Gibson.

Competition winners were: Flower – 1<sup>st</sup> Frances Tucker, 2<sup>nd</sup> Alison Willis, 3<sup>rd</sup> Verna Dawe. An historical artefact – 1<sup>st</sup> Verna Dawe, 2<sup>nd</sup> Frances Tucker, 3<sup>rd</sup> Mary Yates.

The March meeting being held on Wednesday 13<sup>th</sup> March at 7.15pm in Millennium House, Pensilva is the A.G.M. and a Charity Shop Fashion Show.

# **St Ive & District Gardening Club Report**

## **February 2022**

On Monday 7th February we welcomed Seth Pascoe from the Cornish Seaberry Company. What is a seaberry? It's not a berry which grows in the sea as the name suggests.

We heard how Seth, whilst trekking in Nepal, suffered severe altitude sickness. The local guides offered a juice, fluorescent orange in colour, Seth, feeling not at all well, drank the juice. Seth said it was sour tasting but not overly unpleasant. The next morning, he felt much better. Curious about this mysterious juice, he learnt about it from the locals. Seaberries come from sea buckthorn, a prickly tree or shrub. It is wind pollinated.

After Seth arrived back in Cornwall, whilst walking on the Cornish coastal path he couldn't believe it when he saw a sea buckthorn shrub growing in the wild. From an agriculture background and a family in the industry Seth wondered if he could combine the two. A lot of research, applying for a scholarship, travel around the world (including India & China) & an international sea buckthorn conference followed. The result...a sea buckthorn field, supported by Duchy of Cornwall, in Cornwall (with some sheep providing a grass-cutting service!)

The Cornish Seaberry Company supplies berries for sorbet, vodka, beer, chocolate & skin care. The berry is high in goodness, vitamins (C & A) & essential fatty oils. You would think this would be a hugely popular business but, unfortunately, it's not the easiest tree/shrub to grow in this part of the world. Seth is learning as he goes, speaking with his fellow growers across the world, trying different techniques. The harvesting (August/September) is a manual process for Seth; cutting the branches with berries on, placing them in a freezer, when frozen knocking the berries off, not an easy process!

The Cornish Seaberry Company now grows enough to produce a seaberry juice. As the berries are sour they are mixed with apple juice and a little lemon, no sugar. Seth brought along some cans, the fluorescent orange juice is not yet available to purchase but we were lucky enough to try some. It is very refreshing, a sour but nice sour, definitely one for a hot day & it must be delicious as a sorbet.

If you'd like to know more the website is [www.cornishseaberry.co.uk](http://www.cornishseaberry.co.uk). The online shop is due to launch the end of February.

Our March meeting is the AGM & a speaker from The National Garden Scheme:

Monday 7th March at the earlier time of 7:00pm

Anyone can attend meetings, you don't have to be a member, if you see a topic one month you're interested in you can come along as a guest. Equally new members are always welcome



## Millennium House Community Transport

**Do You Require Transport to and from the Doctors or Hospital?**



Although we have lost the use of the AGEUK vehicle, the volunteer drivers have agreed to continue to use their own vehicles to continue to help those in need.

Millennium House Community Transport's aim is to connect local communities and reduce social isolation.

If you would like to volunteer as a driver please contact Millennium House on **01579 363096**.

If you require transport to Hospital; Doctors or Vaccination and have mobility issues, or are unable to drive to your appointment, please contact Millennium House on:

**01579 362919 or 01579 363096** and we will endeavour to help.

## News from the Millennium House Library

Happy New Year to you all. We would like you to know that we have recently carried out some reorganisation in the library.



We have extended the fiction sections and reduced the non-fiction section, believing that fiction is generally more popular.

We have also created a children's section (pictured below) to enable parents to encourage their children to read, or to entertain them while selecting their own books.

You will also see that we have an extensive range of jigsaws which you are welcome to borrow / exchange. It would be helpful to us if you would write on the front of the boxes if there are any pieces missing. Do have a go at the puzzle on the table.



We remain grateful for your contributions to the library and ask that you don't leave great quantities of old/brown books. We also welcome any suggestions you may have to make the library more enjoyable and accessible to the users via the Millennium House office.

**Jill, Trish and Norman.**





Charity No. 1094857

## Volunteer Days 2022

Your chance to get  
involved with helping to  
look after your Community  
woodland.

**Sunday 13<sup>th</sup> March**

**11am – 3pm.**

**\*\*\* Includes wholesome home-made soup, bread and cake! \*\*\***

This is a fun and rewarding way to give a little back to a local community project at a time when caring for our environment has never been so important. It's a great opportunity to meet new people, learn new skills, spend time in the woods and have fun!

Come along and bring family and friends. Those that come along and help get the option to take a share of the timber (once we have put aside the few loads for sale to raise funds for the years' insurance.)

Accompanied children (and dogs on leads) very welcome! Bring hand tools and work gloves if you have them i.e. loppers, bill-hooks and bow saws. We will have a small supply available.

No experience necessary. Training given. Work to suit all abilities and ages.

Come and share some good company and wholesome, productive work.

Please contact us if you would like to come along:  
Ele and Anthony Waters: 07421 813976 or [mail@pentiddy.co.uk](mailto:mail@pentiddy.co.uk)

## PoStIve Community Resilience Project

### **Repair Café - Skills needed, you can help!**

A repair café is a community activity that brings together people who have items they need repaired, with people who have the skills to repair them. We just need a team of willing people with the right skills.

A repair café is a fun, social event that values the expertise of volunteer craftspeople and saves people money, while helping to reduce waste and consumption. We would like to set one up for our parish and we need your skills and enthusiasm. Don't be shy! You don't need to be an expert, you just need to know a bit more than the people who bring their stuff in.

Sewing, mending textiles, fixing gadgets, computers, bicycles, or anything else! If you enjoy helping out your friends and neighbours... Join us to do good and have fun in the process! Just a few hours, once a month.

Tool and knife sharpening, garden machinery / equipment repair, sewing, knitting, darning, woodwork, toys, jewellery, electronics, anything!  
email [posicrp@gmail.com](mailto:posicrp@gmail.com) or message us on Facebook <https://www.facebook.com/posicrp> or phone / text 07768 130520.

Parish of St Ive Community Resilience Project CIO



### **The Growing Project Crowdfunder**

The Growing Project is already very well-known to many in our parish, if nothing else from the many articles it has contributed to the Parish Pump over the years. For those who are not so familiar with it, it is a Community Interest Company, founded in 2011 by the late Ruth Wilson, where local volunteers grow and sell organic fruit and veg for the local community. At the same time it provides a safe space for the helpers to enjoy a beautiful, peaceful and healing environment. About three or four years ago, The Growing Project inherited the one-acre site in Pensilva where it is located, but while the facilities there for growing produce are first class, the facilities for the people involved are very basic. So, The Growing Project has launched a crowdfunding initiative to help to finance the provision of electricity, running water, and some toilets. To find out more go to <https://chuffed.org/project/the-growing-project-fundraiser>





## TAPS RELAUNCH



Covid 19 has disrupted many groups and organisation. The Steering group has worked tirelessly to provide support to members through zoom meetings, newsletters and one to one telephone calls, but with regret this has not retained our members.

But, as they say, when one door closes another one opens, the fight against prostate cancer will go on through a different programme of awareness. Following the AGM meeting it was decided to promote the message by providing a presence at local shows and events, by giving talks to local organisations and groups. and through leaflets, posters and articles in local newsletters.

Can you help us defeat this cancer, if you are involved in running a local show or events and would like our presence or to give a talk to your group please let us know through one of the contact avenues below.

If you or someone close to you has just been diagnosed and would like to chat with someone who is already living well with prostate cancer diagnosis give us a call we are always willing to listen and give support where we can.

**Website:**<https://www.tamarareaprostatesupport.org>

**Email:**[tapsinfo555@gmail.com](mailto:tapsinfo555@gmail.com)

**Paul Mansell 01822 832179    Harry Lawson 01579 383258**

**John Stewart 01822 833343    Stephen Williams 07735 380883**

### **Supporting Guiding & Scouting Activities in Pensilva 200 CLUB Draw Results for January 2022**

<b>1st No. 158 Ms R Hambley</b>	<b>2nd No. 59 Mrs C Woodhouse</b>	<b>3rd No. 103 Mr R Barnard</b>
-------------------------------------	---------------------------------------	-------------------------------------

**Thank you for your support**

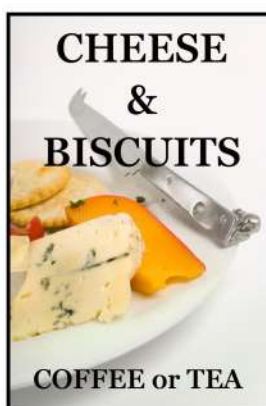


# ST IVE PARISH CHURCH

## LENT LUNCH



DELICIOUS  
HOMEMADE SOUPS



Friday 4<sup>th</sup> March  
12 noon to 2:00 pm  
£4.00  
In aid of church funds



## LENT LUNCHES

Please come & enjoy a simple  
meal of homemade soup  
with a roll & cheese,  
coffee or tea  
for £4.00



Thursdays

10<sup>th</sup>, 17<sup>th</sup>, 24<sup>th</sup>, 31<sup>st</sup> March  
and 7<sup>th</sup> April

12 noon to 1.30 pm

# ST IVE PARISH CHURCH



## TABLE TOP SALE

*Loads of bargains*

*Farm fresh meat  
from Treehill Farm*

*Lots of tables*

*House  
clearance  
items*

*Homemade refreshments*

**Saturday 5<sup>th</sup> March**

**10:30 am to 3:00 pm**

**Ample parking behind church**

**Further information: 07711 453380**



# **T. Tribute** **K. Kids and** **Y. Youth**

**The  
Tribute  
Cluster  
of  
Churches**

**Sunday  
6<sup>th</sup>  
March**

**Sunday  
20<sup>th</sup>  
March**



**Primary aged kids: 4.30 - 6.00 pm**

**Tea for all: 5.30 pm**

**Secondary aged youth: 5.30 - 7.30 pm**

**at**

**Menheniot Parish Church**

To book a place contact: [revbeccabell@gmail.com](mailto:revbeccabell@gmail.com)

# Teatime Church



For children and their families

Sunday 13<sup>th</sup> March

3.45pm

St John's Church  
Pensilva

Sharing a Bible Story

Playing Games

Singing and Praying Together

Eating Tea



Teatime Church will be held on the 2nd Sunday of each month  
at St John's Church

For more information contact: Rev Becca Bell  
Rev Li Selman

[revbeccabell@gmail.com](mailto:revbeccabell@gmail.com)  
[revliselman@icloud.com](mailto:revliselman@icloud.com)



# St John's Church

# Good Grief Cafe

There is no right or wrong way to grieve.  
We aim to bring the bereaved community  
together, with time to share experiences and to  
bring comfort to one another in what can be an  
isolating and lonely time. There is no agenda,  
just free tea, cake, chat and friendship.  
All are welcome, and please use this as an  
opportunity to invite someone.

Wednesday 16<sup>th</sup> March 3.00 to 5.00 pm

Contact Geoff on 01579 362698

# PENSILVA PRIMARY SCHOOL EASTER RAFFLE

**FANTASTIC PRIZES INCLUDING ADMISSION TICKETS, MEALS OUT, VEHICLE  
INTERMITTENT SERVICING, VOUCHERS, SCENTSY AND L'OREAL PRODUCTS AND  
OF COURSE EASTER EGGS!!!**

**£1**

# A TICKET

**DRAW FRIDAY  
1ST APRIL  
TICKETS  
AVAILABLE AT  
RECEPTION**



**PLEASE SUPPORT YOUR LOCAL PRIMARY  
SCHOOL BY DONATING A PRIZE!!  
DONATIONS FROM LOCAL BUSINESSES  
AND RESIDENTS ARE WELCOME!!!**

**GIFTS AND PRIZES CAN BE DONATED AT RECEPTION, FINANCIAL CONTRIBUTIONS CAN BE MADE AT [PayPal.Me/Pensilvapsa](https://www.paypal.com/payto/Pensilvapsa) OR FOR ANY OTHER QUERIES PLEASE CONTACT PIPPA ON: 07891979706**





**St John's Church  
Pensilva**

**on the  
last Tuesday  
of the month**

**2.00**

**To**

**4.00 pm**

**Contact Kathleen  
01579 363686**

**Tuesday  
22<sup>nd</sup>  
March**

# PENSILVA MEMORY CAFE

*If you have memory problems or you are a carer for somebody who does, and would like to meet others who understand your situation, then join us at St John's Church*



**Thursday 24<sup>th</sup> March**

**2.00 to 4.00 pm**

**Contact Geoff on 01579 362698**

**Pensilva W.I**

**MARIE CURIE  
TEA**



**Saturday 26<sup>th</sup> March.**

**2.30 pm to 4pm.**

**At St John's Church  
Pensilva.**

**Bring and Buy.**

**Raffle.**

**£4.00 entry to include tea.**

**All welcome.**

Panto time again.



# Cinderella

Friday 8<sup>th</sup> April

The Public Hall, Liskeard.

Free to the over 60s (Friday only).

**Leaving 6.00pm from The Cross, Pensilva.**

Also picking up at 6.10pm from St Ive Village car park.

**Please book as soon as possible as only a limited number of seats are available due to the restrictions.**

To book, please ring Jean Hoare 01579 362531.



## ST JOHN'S CHURCH, PENSILVA

A united congregation of the Church of England & the Methodist Church

### **Services for March 2022**

Sunday	6 <sup>th</sup>	11.00 am	Revd Andy Day
Sunday	13 <sup>th</sup>	10.30 am	Bishop Philip united Cluster service at St Cleer Parish Church
Sunday	20 <sup>th</sup>	11.00 am	Revd Becca Bell <i>Holy Communion</i>
Sunday	27 <sup>th</sup>	11.00 am	Revd David Hart <i>Mothering Sunday</i>
		5.00 pm	Food for Thought
<b>Thursdays</b>		10.00 am	Morning Prayer Fellowship

### **EVENTS**

Sunday	13 <sup>th</sup>	3.45 - 5.00 pm	Tea Time Church for children & families
Wednesday	16 <sup>th</sup>	3.00 - 5.00 pm	Good Grief Café
Tuesday	22 <sup>nd</sup>	2.00 - 4.00 pm	Knit & Natter
Thursday	24 <sup>th</sup>	2.00 - 4.00 pm	Memory Café
Thursdays	10 <sup>th</sup> , 17 <sup>th</sup> , 24 <sup>th</sup> , 31 <sup>st</sup>	12 noon - 1.30 pm	Lent Lunches

*For further details of the services and events at St John's, or if you know of any illness or need in the village, please call Geoff, 362698 or Frances, 363718*

## **St Ive Methodist Chapel**

### **Services for March 2022**

<b>Sun 6<sup>th</sup> Mar</b>	3 pm	Rev Iris Bray with communion
<b>Sun 13<sup>th</sup> Mar</b>	3 pm	Mr Mark Pellow
<b>Sun 20<sup>th</sup> Mar</b>	11:15am	United Service at St Ive Parish Church
	6.00 pm	At Chapel, Green Shoots, United Service led by Keith Mutton and Rev Andrew Day
<b>Sun 27<sup>th</sup> Mar</b>	3 pm	Rev Jonathan Budd

Chattermakers craft group meet fortnightly and all are welcome. Please ring Kathryn on 01579 382334 for more details.

# Millennium House Coffee Shop Opening Hours

We are open Tuesdays, Wednesdays and Fridays, 9am to 1pm  
(to coincide with Post Office days).

Our intention is to open more days and for more hours as soon as Covid regulations allow.

Covid precautions are in place at all times, providing a safe environment for our customers.

## *All Being Well*

We are still open for three mornings a week. A maximum of six members can now attend at one time.

### Opening hours:

Monday, Wednesday and Saturday, 9am to 1pm.

Maximum six members at a time for each of three slots within each session: 9:00 to 10:20, 10:20 to 11:40 and 11:40 to 13:00

### **Prior booking is essential**

To book yourself in or for any enquiries, call in at the gym or telephone on **01579 363890**, during the opening hours listed above.

**22 years working in our local community to improve health, fitness and well being.**

# Badminton has restarted at Millennium House

Come and join our relaxed and friendly group.

**Mon & Tue 7:30 - 9:30pm**

For further info phone Nigel or Carol on 01579 363594 or 07885 798370

## **PENSILVA VILLAGE HALL**

**We are now open and back in business!**

Anyone wishing to book the hall for meetings, birthday parties or fundraisers, please contact Peter or Jackie Browning on **01579 363212** or email **[peterpensilva@gmail.com](mailto:peterpensilva@gmail.com)**

Please note that as well as hall rent there is a coin meter for



## **MOBILE LIBRARY**



**The County Mobile Library** visits our area every four weeks, always on a Friday. You can now browse the shelves again, but you can still pre-order books if you prefer.

Next visits: **Mar 11, April 8, May 6, May 27 and July 1.** (The last two dates changed due to the Jubilee weekend.)

Stops at The Victoria Inn, Pensilva from 10.25 to 10.45am; and Quethiock bus stop from 11.00 to 11.20am.



## **Struggling with Sight Loss?**

iSight Cornwall offers practical help to people living with sight loss in Cornwall including:

Low Vision: Advice for low vision aids

Assistive Technology: Advice on products

Benefits Advice: Assistance to claim entitlements

Equipment Demonstration: Advice on gadgets

Social Clubs & Activities: Links to clubs & activities in the county

For more details Telephone 01872 261110 or visit

[www.isightcornwall.org.uk](http://www.isightcornwall.org.uk)



# MILLENNIUM HOUSE

COMMUNITY CENTRE, AND DYNAMIC EVENT  
VENUE IN THE HEART OF EAST CORNWALL



#### Conferencing

We have four meeting rooms for all your corporate needs.



#### Function Room

For parties, discos, or just larger events; with adjoining kitchen and bar.

### Our Facilities

#### Sports Hall

For sports or larger events requiring a stage, the sports hall is our biggest venue.



#### Coffee Shop

Providing tea, coffee and cake. And for something stronger, there's the Mel, a licensed bar.



**Enquire today:**  
**01579 363096**

[www.millenniumhouse.org.uk](http://www.millenniumhouse.org.uk)  
PRINCESS ROAD, PENSILVA, PL14 5NF

## What Do We Do?

From wedding to wakes, kids or adults, corporate or community, we can host and cater your event. If you have an idea that's not covered here, get in touch and see if we're the right venue for you.

#### We're also home to:

- ✓ The Mel bar
- ✓ All Being Well Fitness Centre
- ✓ Post Office
- ✓ Sunflower Park kids playground
- ✓ Extensive playing fields
- ✓ Community Library

# Bargain Corner Free Ads up to £50

Ads are free for items up to £50. £5 charge for items over £50. Please leave a note at Millennium House reception, ring the Parish Office on **01579 363096**, or email **parishpump@btconnect.com**.

**\*\*\* Please let us know when your item has sold \*\*\***

Panasonic **Electric Typewriter. £50**  
Casio **Electric Organ** with stand **£100**  
**01579 363372.**

Wood and cast iron **Patio Set.** 2 chairs, bench seat and table. Buyer collects. **£45**  
**01579 363626.**

**Ladies Superdry Jacket.** Size Med. Good condition. **£15. 01579 346982.**

**2 short legged wetsuits.** 1 x 38" chest and 1 x 42" chest. Used once. As new. **£20 each. 01579 362128.**

Canon IP2700 **Printer. £20**  
**Computer screen 19" £20.**  
Epson Perfection v350 **Scanner Photo £20**  
Sony Revia 42" **TV. £45.**  
All in working order. **01579 363200**

**Long handled garden fork** in VGC. Ideal to prevent back strain when digging or removing shrubs. **£15.** Collection Only, **2 electric drills** in working order with chuck keys **£15** for the two.

Brand New **Vinyl Flooring** for kitchens, bathrooms or hallways 13ft long x 2ft 11 inches wide. Colour light to mid grey. **£25.**

Early 19C / late 18C **cast iron fireplace faceplate** in GC, 36" high x 24" wide. Ideal as a fire faceplate or ornament. **£35.**

Six coils of industrial steel cable now surplus to requirements **£35** the lot.

**01579 384658** (Safe Distancing if reqd.)

Set of 3 **suitcases**, red, vgc, Antler, **£40** ono. **07770 747353.** Pensilva area

Set of **Snow chains**, new and unused. Fit 14" to 19" rims, self adjusting. **£40**  
Pensilva **01579 362207**

**Please let us know when  
your item has sold**

# VICTORIA INN

The Cross, Pensilva. Tel: 01579 363933

---

## Opening Hours

Mon & Tues: Closed  
Wednesday: Lunchtime: Carvery from 12-2pm (see below)  
Evenings: 5pm to 9pm  
Friday: 5pm to 11pm  
Saturday: 2pm to 11pm  
Sunday: 12 noon to 6pm

Times may vary when we have functions / live music.

---

## Meals on Wheels Service

Wednesday to Sunday (varied menu)

Please give us a call if this may be of interest to you  
or if someone that you know may need our help.

---

## Our full menu is also available for delivery or to eat in.

Wednesday Evening - Homemade Pie Night (varies weekly)

Also includes a dessert. **£9.95**

Please check our weekly 'Specials'

Thursday Evening - Curry Night (Eat in or Takeaway) **£6.00**

Friday & Saturday Evening - Fish, Chips & Peas Special

Small **£5.95**, Large **£7.95**. Add a dessert for **£1.00**

Sunday Carvery 12noon to 3pm **£9.50** (Collection, Delivery or Eat in)

---

## Wednesday Lunchtime Carvery

Wednesdays, 12-2pm.

Carvery & dessert £9.95 (OAP Special).

Please phone 01579 363933 to book.



Find us online:  
[fresh\\_prop.co.uk](http://fresh_prop.co.uk)



Top quality carpet, upholstery & hard floor  
cleaning services based in Callington

Long-established cleaning professional

Domestic & commercial

NCCA qualified & member

Steam cleaning & dry carpet cleaning

Tile & grout + natural stone clean & seal

Vinyl & LVT including Amtico & Karndean

Call 0800 3893393 or 07905 188459

Or email [nevil\\_fresh@msn.com](mailto:nevil_fresh@msn.com)

## TRADITIONAL STONE SERVICES

CLASSIC & TIMELESS  
STONE MASONRY  
AND LETTERING

MEMORIAL CLEANING

COMMISSIONS TAKEN

**01579 363693**

OR

**07507 782282**



Domestic Electrical  
Property Maintenance  
Interior & Exterior Work  
Carpentry :: Decking  
Kitchens :: Bathrooms  
Wall & Floor Tiling  
General Plumbing

**MCCARTHY PROPERTY MAINTENANCE**

**Electrical Safety  
Register**

incorporating  
ELECTRA  incorporating  
ECA  
Certification Ltd

HIGHLY REGARDED LOCAL BUILDER  
COMPETITIVELY PRICED  
COVERING THE SOUTH WEST

Contact Dominic

07968 599 675

01579 362 945

[info@mccarthypropertymaintenance.co.uk](mailto:info@mccarthypropertymaintenance.co.uk)

[www.mccarthypropertymaintenance.co.uk](http://www.mccarthypropertymaintenance.co.uk)



Maintaining and preserving our  
countryside for the benefit of all

Dry Stone Walls

Cobblestoning

Stone faced walls

Hedgelaying/steeping

Land management

All aspects of Landscaping

Mobile: 07539 296799 or

Email: [info@just-in-stone.co.uk](mailto:info@just-in-stone.co.uk)

## Naomi's Footcare Service

I provide a personal toenail-cutting service within the comfort of your own home.

To include removal of calluses, corns, hard skin, and reduction in thickening nails.

- ✓ Trained foot health practitioner.
- ✓ Fully insured
- ✓ DBS checked.

naomiturner84@gmail.com

07809 690385

## **Debbie Hicks - Counselling and Psychotherapy**

*Caring, confidential counselling for all.*

*I work in a therapeutic relationship to help you understand yourself better.*

*I offer a warm, approachable, relaxed environment for you to untangle your thoughts and emotions.*

**www.debbiehickscounselling.co.uk**

**Email: debbiehicks10@gmail.com**

**07851 133782**

*More info on my website or by contacting me.*



## **JP'S FRESH HOT FOODS**

**HOME COOKED SPECIALS AND DESSERTS**

**INCLUDING REGULAR TAKEAWAY MENU**

**THURSDAYS - 4PM - 7PM, EAST TAPHOUSE HALL CAR PARK**

**FRIDAYS - 4:30PM - 7:30PM, PRINCESS ROAD PENSILVA**

**LOCAL FOODS FRESHLY COOKED**

**CASH OR CARD ACCEPTED - PRE-ORDERS WELCOME**

**TEL. 07966 994585**



**JP'S FRESH HOT FOODS**

**EVENTS TAILOR-MADE AND CATERED FOR WEDDINGS, BIRTHDAYS AND ANY CELEBRATIONS.**

**PLEASE CALL FOR ANY FURTHER INFORMATION.**



# Westwood Garden Maintenance



*Antony Watts*

*Grass Cutting, Clearance*

*Weeding, Turfing*

*Hedge Cutting*

*Patio Cleaning, Planting*

*Regular Visits / One-off Contracts*

*Residential & Commercial*

**FREE ESTIMATES**

01579 362019   [www.westwoodgm.co.uk](http://www.westwoodgm.co.uk)   07952 094472

## JPH Plastering and Rendering

Internal plastering

Internal and external rendering

Internal/external painting & decorating

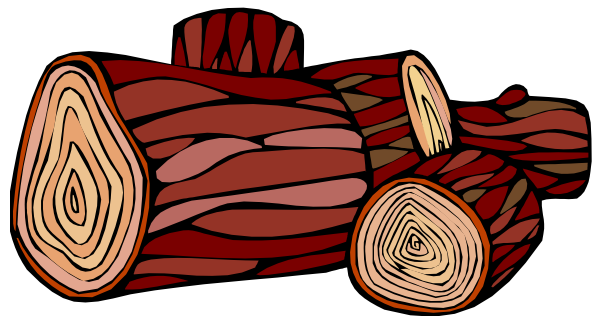
Property maintenance

Landscaping and land management

For estimates and no obligation quotes  
contact Justin on:

**07539 296799** or  
[info@just-in-stone.co.uk](mailto:info@just-in-stone.co.uk)

## SEASONED LOGS



**MIXED LOAD**

or

**HARDWOOD**

**Tel. Jonathan**

**Mobile 07966 070725**

or

**01579 363157**



## **PENROSS**

Rosecraddoc Lodge Holiday Bungalows  
(Between Pensilva & Liskeard)

Ideal for family & friends coming to visit!



Refurbished in 2018. Sleeps 4. Electric, heating, bedding & towels inc in rent. Patio. Free wi-fi. Follow us on Facebook.

Sorry no pets or smoking.

Contact Julie Tucker on 01579 362221 or

email [penhargetfarm@gmail.com](mailto:penhargetfarm@gmail.com)

for 15% discount

## **NICOLA GREENE**

BSc (hons) Podiatry MChs

HPC Registered Chiropodist/Podiatrist

**Home Visit Practice treating all  
your foot care needs:**

- Nail Cutting
- Corns and Calluses
- Thickened Nails
- Dry Cracked Skin
- Verrucae
- Foot Pain
- Diabetic Foot Assessments
- Wound Care

**T: 01579 590027**

**M: 07786164205**

**E: [nicki\\_greene@yahoo.com](mailto:nicki_greene@yahoo.com)**

# **Matt's Windows**

**Repair of Windows, Doors  
& Glass Unit Replacement**

**T: 01579 641228**

**M: 07533 387368**

**Debbie's Care Services**  
**Tel. 0777 948 3230**

Hello, my name is Debbie. I am a local lady who has been working in the community for over 30 years.

I provide the following services and more!

- Assisting bathing / showering
- Preparation of meals
- Cleaning / Shopping / Ironing
- Companionship / Friendship and emotional support
- Assisting with mobility
- Day, Evening and Night Care

**MUST STEP**  
**PODIATRY**  
**HCPC Registered**  
**podiatrist**

Fully insured  
NHS experience

Kind and caring

Home visits

**All your footcare needs**

Most areas covered

**Tel: 07522 577012 or**  
**07561 608296**

**DO YOU NEED A HELPING HAND?**

Reliable, friendly,  
experienced, mature  
local resident offering  
the following services:

**Cleaning      Ironing**

**Shopping      Light Gardening      Dog Walking**

CRB/DBS checked and fully insured.      Competitive rates.

**Contact Jess:** Telephone or text: 07934 764 327.

Email: homeangel77@yahoo.com. Find us on Facebook





KV Accounting Solutions



## Local Accountant offering fixed fee accounting services

With over 20 years experience, I am a fully qualified, friendly, local accountant

- ✓ Annual Accounts for Sole Traders and Partnerships
- ✓ Book Keeping & Payroll
- ✓ Personal Tax Planning
- ✓ Company Accounts
- ✓ Business Support & Advice

- ✓ Self Assessment tax returns
- ✓ iXBRL tax filing
- ✓ Tax investigation Fees Insurance
- ✓ Company Secretarial work
- ✓ Tax calculations for Sole Traders and Partnerships

Kate Vaughnley FCCA - Chartered Certified Accountant

Website : [www.kvaccountingsolutions.co.uk](http://www.kvaccountingsolutions.co.uk) or Email : [katevaughnley@gmail.com](mailto:katevaughnley@gmail.com)

Telephone : 01579 364083



**Gas Services**

**NATURAL GAS - LPG - OIL**

**BOILER INSTALLATION**

**BOILER SERVICE & REPAIR**

**LONG WARRANTY FREE QUOTES**

**07859848288**

**[bagasservices@outlook.com](mailto:bagasservices@outlook.com)**







## Affordable Counselling

Caring, confidential,  
non-judgemental

- Increased confidence and self esteem
- Help to cope better at difficult times
- Improved relationships
- Clarify confused thoughts & feelings
- Assertiveness
- Personal insight
- Improved emotional health
- Available for youth and adults

**Isabelle McGarahan BA, PGCE**  
**Dip in Therapeutic Counselling,**  
**Accredited ACC, DBS cleared**  
**[www.im-counselling.org](http://www.im-counselling.org) email:**  
**[isabelle@im-counselling.org](mailto:isabelle@im-counselling.org)**  
**01579 344090/07857326229**



## P BRADLEY PLUMBING & HEATING

Email: [info@pbplumbingheating.co.uk](mailto:info@pbplumbingheating.co.uk)

Web: [www.pbplumbingheating.co.uk](http://www.pbplumbingheating.co.uk)

Facebook: @PDBradleyPlumbingandHeating

**NO JOB TOO BIG OR SMALL**

**24hr Emergency Call Out**

**Based in Liskeard**

**Call Today 07598956760**

## ***"The complete bathroom installation service"***

**New bathrooms fitted,  
floor and wall tiling specialist**

**General Plumbing including:**

- Bathroom makeovers
- Dripping taps and burst pipes
- Pump and cylinder changes
- Radiator upgrades and additions
- Specialist in Leadwork
- No job too small
- No Call out charge



# **W. Hale** *Plumbing*

**Friendly Service, Quality Work**

**NO VAT**

**City and Guilds Qualified  
established 1983**

**Call William Hale on**

**Tel: 01579 362132   Mobile: 07826 699719**



Kiln Dried Firewood  
Kindling & Firelighters  
Eco Heatlogs  
LPG Bottled Gas  
Patio, BBQ & Camping Gas  
Coal & Smokeless Fuel



**0800 8021 223**

**sales@loganslogs.co.uk**  
**www.loganslogs.co.uk**

## Heel 2 Toe Footcare

Tired Aching feet.

Corns, Hard skin, Verruca.

Fungal infected toe nails, or  
toe nails require cutting.

Diabetic feet also treated and  
regularly checked.

I can help to keep your feet  
looking and feeling good.

I am a trained Foot Health  
Practitioner to Diploma Level, fully  
insured & DBS checked.

I can do home visits via an  
appointment.

Call Penny: **07746 926146** for  
further information. **Please note**  
**new number May 2021.**

## MARK FITCH CHIMNEY SWEEP

- \* BRUSH & VACUUM
- \* CLEAN, RELIABLE SERVICE
- \* COVERING ALL S.E. CORNWALL
- \* DISCOUNT FOR MULTIPLE CHIMNEYS
- \* COWLS & GUARDS FITTED
- \* STOVES SERVICED



*Call  
Mark on:*

**01579 350762**  
**07773 462643**





# QUALIFIED RAYNOR MASSAGE THERAPIST

## RELAXING AND THERAPEUTIC MASSAGE TREATMENTS

Effective for many different types of chronic pain, sports injury, stress and tension related problems



CBD massage now available

### APPOINTMENTS AVAILABLE AT

LISKEARD THERAPY CENTRE  
LISKEARD PL14 3JB

THE WELLBEING CENTRE  
LISKEARD PL14 6AT

Contact : Tina North  
Phone : 07720 832322

Website : [massage-therapy-cornwall.co.uk](http://massage-therapy-cornwall.co.uk)



## R J Gardening & Handyman Services

All aspects of gardening and handyman work undertaken.

- ~Local and Trustworthy
- ~Hard Working
- ~Reliable and Experienced
- ~No job too small
- ~Competitive rates

Contact Raymond on:

07541 229064 or 01579 347622

[raymond\\_pearcegb@yahoo.com](mailto:raymond_pearcegb@yahoo.com)

Find us on Facebook.







**R&C**  
GROUNDWORKS  
& LANDSCAPES



Fencing  
Paths & Steps  
Turf & Astro turf  
Driveways  
Retaining walls  
Digger work  
Footings & foundations

Patios  
Rendering  
Decking

**And more**

Free no obligation quotes

**Call Rob on:**

**07518246666 or  
01579 641802**

## Window Cleaner

Also any upvc cleaned

i.e. fascias, gutters, etc.

gutters cleared & unblocked

Please phone Rob

**07709 053464**

## Window Cleaner

**Save Costly Energy!**



**SOLARTEC** Windows & Conservatories Ltd

**'A' Rated WINDOWS & DOORS  
at BEST PRICES EVER!**



Professionally fitted and finished by us with a  
10 year ins. guarantee.  
In all colours

FENSA  
REGISTERED

**NEW**

**FACTORY SHOP  
SUPPLY ONLY**

For all your windows, doors, conservatories,  
fascia, trims, guttering and sealants

**7-10 DAY TURN AROUND ON WINDOWS,  
DOORS and CONSERVATORIES**

**TEL: 01579 343425**

**FAX: 01579 344500**



WEBSITE: [www.solartecwindows.co.uk](http://www.solartecwindows.co.uk)

EMAIL: [sales@solartecwindows.co.uk](mailto:sales@solartecwindows.co.uk)

**KEEPING JOBS IN CORNWALL**

*PJR Garden Services*

**Phil Rule**

**All aspects of garden  
work - grass / hedge  
cutting, patios, fencing  
etc.**

**Mobile 07387 449004**



# Group Travel

Day Trips & Coach Holidays

Enterprise Park, Midway Road, Bodmin, Cornwall PL31 2FQ

## Coach Excursions & Tours 2022

24th - 29th April	Chester, Liverpool & the Beatles
30th April	Tobys Garden Festival, Powderham
6th May	Steam Train & Kents Cavern
7th May	Badminton Horse Trials
19th May	Cruise the English Riviera
14th June	Agatha Christies Greenway House
18th June	Falmouth Sea Shanty & Regatta
29th June	Trebah Gds, Falmouth & St Mawes
8th - 9th July	Hampton Court & Kew Gardens
16th July	Broomhill Sculpture Gdns & Barnstaple
22nd July	Exeter Canal Cruise & Dartmoor Line
6th August	Taunton Flower Show
7th August	Magic Millions Festival of Eventing
27th - 28th August	Great Dorset Steam Fair

Call: 01208 77989 for bookings and brochure  
website: [www.grouptravelcoachhire.co.uk](http://www.grouptravelcoachhire.co.uk)

## Bodmin MOT Centre

**01208 77989**

Garage Services  
MOT Testing Station  
Classes 4, 5 & 7  
Servicing & Repairs  
High Vehicles & Motorhomes  
Brake Test & Headlight Alignment  
Pre MOT Inspections  
Annual & Interim Vehicle Servicing  
~  
Commercial interim inspections available  
including brakes and lights  
~  
Helping you stay compliant

Bodmin MOT Centre at Group Travel  
Enterprise Park, Midway Road,  
Bodmin, Cornwall PL31 2FQ

## Martin Hoare – Local, Reliable, Competitive



WHEEL DIGGER FOR HIRE  
ALSO AVAILABE 'BREAKER'  
AND NEW CONCRETE  
'CRUSHER BUCKET'

ALL AT COMPETITIVE RATES

GROUND WORKS  
DRAINAGE  
NEW DRIVEWAYS  
SEPTIC TANKS &  
'SOAK AWAYS' INSTALLED



LASER LEVEL FOR HIRE  
QUOTES AVAILABLE



Phone 01579 363517

or

Mob 07863 291213





# INDEPENDENT FAMILY FUNERAL DIRECTORS

Supporting families to arrange funerals with sensitivity, dignity and care.

- Flexible, caring approach, tailor-making funerals to suit your needs and budget.
- Open and transparent, affordable pricing.
- Free bereavement support sessions, open to all in our community, first Wednesday of the month, 10am - 12pm.
- Prepayment Funeral Plans available

For details of our services and prices, visit our website.



**01579 362358 | [www.fdhallfunerals.co.uk](http://www.fdhallfunerals.co.uk)**



Avalennek, Caradon Town,  
Upton Cross, Liskeard  
Cornwall PL14 5AR  
Telephone 01579 363598  
Mobile 07901 538132  
[chrisrounsevell@tiscali.co.uk](mailto:chrisrounsevell@tiscali.co.uk)

## HOG ROAST EQUIPMENT HIRE AND MEAT SUPPLY

Hog Roasts For Those Special Occasions  
Self Catering or Hassle Free Service  
Everything done to your special requirements

**CHRIS ROUNSEVELL**  
**TRADITIONAL BUTCHER**



Come and visit our recently updated  
**Tile & Bathroom showroom** in PENSILVA

We offer a generous discount to all Pump Readers

Unit 24 Pensilva Ind Est, St Ive Road, Cornwall PL14 5RE 01579 362264

**CORNWALL TILE**  
CENTRE

Pensilva Showroom

Open	Mon - Fri	8.30am - 5pm
	Saturday	9.00am - 1pm

Tiles & Mosaics for:

Bathrooms & Kitchens Living Areas Conservatories  
Patios & External Areas Wet Rooms & Spas Swimming Pools  
& All Commercial Applications

 **atlas concorde**

[www.cornwalltile.com](http://www.cornwalltile.com)

**OPEN FOR RETAIL, TRADE & COMMERCIAL ENQUIRIES**





THE HOME OF WOOD

## BULK DISCOUNTS AVAILABLE ON OUR 30 YEAR SERVICE LIFE POSTS



**OUR GOLD TREATED STAKES AND POSTS ARE THE ONLY ONES AVAILABLE IN THE UK THAT ARE APPROVED BY THE WPA BENCHMARK FOR 30 YEAR SERVICE LIFE**

**For more  
information please  
contact one of our  
team**



**Bond Timber, Bake Sawmill, Trerulefoot, Saltash, Cornwall,**

**PL12 5BW**

**01503 240 308    [stacy@whbond.co.uk](mailto:stacy@whbond.co.uk)**



# Pensilva Stores

**Amazing Value**

**Premier**  
a great deal more from your local store

Mon-Sat. 7:00 AM. - 9:30 PM.  
Sunday 8.00 AM. - 9:30 PM.

- ✓ Fantastic Special Offers every month!!! (See store leaflets)
- ✓ Come and Check out our great deals on Wine, Beer and Spirits
- ✓ Local Produce: Homemade Butter and Clotted Cream, Meat from our local butcher
- ✓ Cornish Fresh Fruit and Vegetables
- ✓ Fresh Bread, Pasties and Cakes
- ✓ Take Away Coffee, tea and hot chocolate
- ✓ Newspapers and Magazines, Greeting Cards
- ✓ Paypoint, Lottery

**\* Free to use ATM \***

**\* Card Payment \***

**Friendly Staff + Service with a Smile !!!**

**Pensilva Stores is a family run business who have been serving local people and visitors for more than 21 years.**

Higher Road, Pensilva, Liskeard, Cornwall PL14 5NQ

Tel: 01579 362547

# MENDOLOGY

## Garage Door Specialist

- ☐ Repairs
- ☐ Servicing
- ☐ Installations

Out of hours service  
call Dave anytime 07974 442645

**MENDOLOGY** COMMERCIAL DOORS LTD  
www.mendologydoors.co.uk

**01579 363760**



# PensilvaCars

01579 363516

- ✓ MOTs Class 4
- ✓ Service
- ✓ Repair
- ✓ Tyres
- ✓ FREE Courtesy Car

- ✓ Car & Van Sales
- ✓ Diagnostics
- ✓ Air Conditioning



**We have offered a supply, fit & balance of tyre service for 10 years at competitive prices.**

**Most of our tyres can be supplied the same day.**

**LOCAL RECOVERY £45.00**

**[www.pensilvacars.co.uk](http://www.pensilvacars.co.uk)**

**[pensilvacars@hotmail.co.uk](mailto:pensilvacars@hotmail.co.uk)**

We can service and repair your car to manufacturer specification, keeping your dealer warranty without main dealer expense.





# KEITH RICHARDS

## Motor Body Repair Specialists

A family run business with fully equipped & maintained workshops & a focus on  
Customer Care

- ♦ Motor Body Repair Specialist
- ♦ Mechanical Repairs
- ♦ Servicing to All Makes & Models
- ♦ Computer 4 Wheel Alignment
- ♦ 24 Hour Recovery Service
- ♦ Renovations & Re-sprays
- ♦ Member of RMI (Retail Motor Industry Federation)
- ♦ Latest Diagnostics (including specialists for VW, Audi, Seat,  
Skoda & Vauxhall)

With over 30 years' experience we aim to provide you with:- Value for Money -  
Friendly Service - Professional Approach - Expert Advice that you Can Trust  
(Visit our website for more details)

Pensilva Industrial Estate, St Ive Road, Pensilva, Liskeard, Cornwall PL14 5RE

Tel: 01579 362593

Email: [keith@keithrichardsmotorbody.co.uk](mailto:keith@keithrichardsmotorbody.co.uk)

Fax: 01579 363194

Website: [www.keithrichardsmotorbody.co.uk](http://www.keithrichardsmotorbody.co.uk)

Wm. Newham & Sons *Est. 1895*

Proprietor Robbie Savill AWCB

## CHIMNEY SWEEPS & BLACKSMITHS



CHIMNEY SWEEPING

BIRD GUARDS, COWLS & POTS FITTED

CCTV INSPECTIONS & SURVEYS

STACK REPAIRS & REBUILDS

RIGID STEEL SYSTEMS ERECTED

STAINLESS STEEL and PUMPED CONCRETE  
CHIMNEY LINING

STOVES SUPPLIED, INSTALLED & REPAIRED

FIREPLACE ALTERATIONS & RENOVATIONS

FULL RANGE OF FIREPLACE FURNITURE

made to order

**01579 347777**



### FOR ALL YOUR CELEBRATION NEEDS

Visit our shop: 12 Fore Street, Callington

Call us on 01579 384386

Find us on Facebook or visit our website:

**[www.victoriaeyton.co.uk](http://www.victoriaeyton.co.uk)**

- Helium Balloons - Balloon Arches -
- Bespoke Balloon Designs -
- Personalised Balloons - Partyware -
- Huge selection of greetings cards -
- Weddings, Parties and Corporate events catered for.

# J. J. Child

**Plumbing and heating engineer.**

**Oil appliance service, repair and breakdowns.**

**Over 30 years experience**

**Call John: 01579 362336 or 07837 921086**







# Pensilva & St Ive Post Office Service

**Pensilva:** Through the coffee shop on the 1<sup>st</sup> floor of Millennium House

**Tuesdays:** 9am to 1pm.

**Wednesdays:** 9am to 12 noon.

**Fridays:** 9am to 12 noon

**The Millennium House  
coffee shop is also open on  
these mornings.**

.....  
**St Ive:** At St Ive Village Hall

**Wednesdays:** 10:30 to 11:30am

**Coincides with the St Ive  
Village Hall Coffee Morning**

## Saint Ive Parish tree-planting survey

Please let us know about any trees that you plant within the Parish. We will include them in our own survey and we will notify the Forest for Cornwall on your behalf, if appropriate.

email [posicrp@gmail.com](mailto:posicrp@gmail.com) or message us on Facebook

[www.facebook.com/posicrp](https://www.facebook.com/posicrp) or phone 01579 364016.

Pictures very welcome.

