

THE PARISH PUMP



February 2022
Edition 483



The Newsletter for the Parish of St Ives



**The old mine chimney on Kit Hill, now
“repurposed” as a mobile phone mast.**

Photograph by Martin Sellix.

Disclaimer

The articles appearing in this magazine do not necessarily reflect the views of the Parish Council nor of the Parish Pump Editor.

Parish Councillors Telephone List

Alan Moss (chair)	01579 362064	Ivor Vaughan (vice-chair)	07979 934604
James Bruce	07411 192645	Marlene Carr	01579 362919
Martin Corney	01579 382450	Sandra Doe	01579 363096
Rosemary Farley	01579 384810	Nigel Gisby	01579 363096
Ron Greenhough	01579 363096	Tony Hodson	07973 536964
Nigel Libby	07968 891814	Paul Mann	01579 363757
Craig Vaughnley	01579 364083		

Meetings of St Ive Parish Council

Meetings are now being held when possible. Please see the Parish Council website for meeting dates, agendas and minutes.

<http://st-ive-parishcouncil.gov.uk/minutes-agendas/>



Devon & Cornwall Police
Building safer communities together

 **101**

Minicom 18001 101

Police Community Neighbourhood Office

Your Community Support Officer is PCSO Steve Edser 30173.

email: CIOSNBMLiskeard@devonandcornwall.pnn.police.uk

To report a crime call 101 or go to www.devon-cornwall.police.uk

In an emergency call 999

Contact details for St. Ive Parish Council and for Millennium House

Address for correspondence: Millennium House, Century Square, Pensilva PL14 5NF

General Parish matters should be raised initially with the Parish Clerk, Jenny Hoskin, who will present them to the Parish Council.

Telephone: 01579 363096, email: stiveparish@btconnect.com

For accounts matters for the Parish and for Millennium House contact John Body, Finance Officer: 01579 362102, email: millenniumhouseadmin@btconnect.com

Millennium House enquiries and reservations: 01579 363096

email: millenniumhouse@btconnect.com.

On the web: Millennium House Website: www.cornwallvenue.com

Parish website: st-ive-parishcouncil.gov.uk Facebook: facebook.com/stiveparishcouncil

PARISH PUMP ADVERTISING COSTS - NOTICE OF INCREASE.

The prices for advertising in the Parish Pump have increased with effect from the January 2022 edition, the first increase since December 2012.

The new prices (including VAT at 20%) will be as follows:

Quarter page: £10:00 per month or £100:00 for 12 months.

Half Page: £20:00 per month or £200:00 for 12 months.

Full Page: £33:00 per month or £330:00 for 12 months.

Parish Pump Information and Contact Details

To contact the editor please email: parishpump@btconnect.com

or phone the Parish office: **01579 363096.**

Hardcopy submissions by post or by hand to the Parish office, Millennium House.

Softcopy submissions: By email to the editor in MS Word, MS Publisher, pdf, Tiff or jpeg. Please use A4 pages and minimum 16 point font as the Pump is initially produced in A4 size and reduced to an A5 booklet at the printing stage. If in doubt please contact the editor.

Current Advertising Prices including VAT at 20%

Per issue: Quarter Page £ 10 Half Page £ 20 Full Page £ 33

12 months: Quarter Page £100 Half Page £200 Full Page £330

Bargain Corner free ads by email to the editor or drop off at the Parish Office.

Deadline for the Parish Pump is STRICTLY 15th of every month

From the Editor

As I write this, COVID restrictions have been relaxed, because the Omicron Covid variant is in decline. Well, in London it is, around here it seems we are behind the London curve and are still on the upslope before the peak. As has happened in similar situations earlier in the pandemic, everyone will make up their own minds about how far they want to drop their guard. That is surely a good thing.

I have found, in the last few months, that I don't have much to say to you in these editorial pieces; perhaps because I am mixing with far fewer people and I've lost track of the issues that are exercising the community locally. So I'm just going to say, to anybody who is struggling... there is help out there! Don't feel that you can't ask for it. Everybody is struggling to some extent and most people feel good if they can help those who are struggling more than they are.

Also, write and tell me your pandemic stories. There ought to be some sort of chronicle of how people in our Parish have been living for the last two years. Of course, everything you say will be treated in the strictest confidence. If enough people write in, perhaps we can put together a document of some sort that can be stored as a primary source archive for future generations.

Thanks. Joe

St Ive Village Hall

Gardening Club	1st Monday monthly 7:30pm	01579 382762
St Ive Snooker Club	Monday & Thursday 7:00pm	01579 382315 R Bunkum
Yoga	Tues 4:30-6.00 & 7:00-8:30pm	07947 785554
Post Office	Wednesday 10:30 - 11:30 am	
Coffee Morning	Wednesday 10:30 - 12:00	

St Ive Village Hall is available for hire, £3.50 per hour. Includes the use of the kitchen & electric (excluding wall heaters, which are on a £1 coin meter)

Contact Sue Sedgwick on 01579 383291

Hall meetings are now held quarterly on the third Monday of the month in January, April (includes the AGM at 7pm) July and October at 7.30.

Chairman's Report Feb 22

On a Saturday in January, a group of volunteers cleared the land at the end of Slade Park Road. This will allow the young trees and wild flowers to see the sun and we should start to see the results in the next couple of months. Thanks to those who gave up their time.

Millennium House continues to recover with bookings coming in daily, and although we no longer have the AGEUK vehicle, the volunteer drivers we had are committed to continue serving our community using their own cars. If you need transport to hospital, doctors etc contact Millennium House.

Keep an eye out for a group called 'Mind Your Manners' coming soon to a venue near you!

Alan Moss Parish Council Chair

Opening times for the Mel Bar at Millennium House

Thursdays 5 - 11 pm.

Fridays 5.30 - 11 pm.

Saturdays 5 - 1 pm.

Also Tuesdays 5 - 11pm but only when the Function Room is in use.

These times may change depending upon footfall.

Millennium House Community Transport

Do You Require Transport to and from the Doctors or Hospital?



Although we have lost the use of the AGEUK vehicle, the volunteer drivers have agreed to continue to use their own vehicles to continue to help those in need.

Millennium House Community Transport's aim is to connect local communities and reduce social isolation.

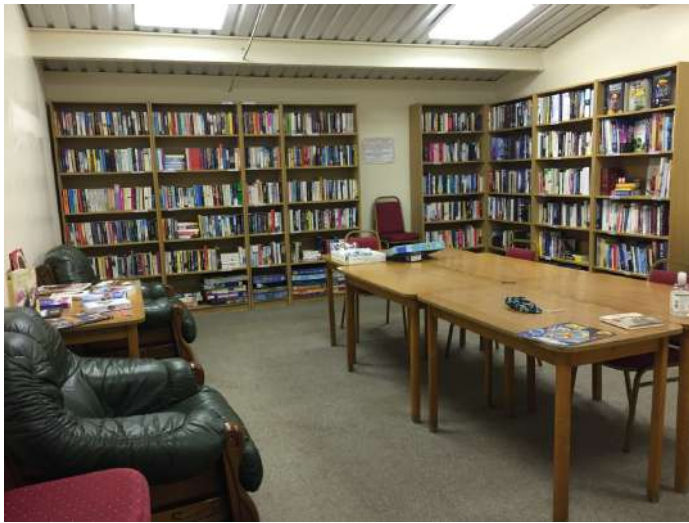
If you would like to volunteer as a driver please contact Millennium House on **01579 363096**.

If you require transport to Hospital; Doctors or Vaccination and have mobility issues, or are unable to drive to your appointment, please contact Millennium House on:

01579 362919 or 01579 363096 and we will endeavour to help.

News from the Millennium House Library

Happy New Year to you all. We would like you to know that we have recently carried out some reorganisation in the library.



We have extended the fiction sections and reduced the non-fiction section, believing that fiction is generally more popular.

We have also created a children's section (pictured below) to enable parents to encourage their children to read, or to entertain them while selecting their own books.

You will also see that we have an extensive range of jigsaws which you are welcome to borrow / exchange. It would be helpful to us if you would write on the front of the boxes if there are any pieces missing. Do have a go at the puzzle on the table.



We remain grateful for your contributions to the library and ask that you don't leave great quantities of old/brown books. We also welcome any suggestions you may have to make the library more enjoyable and accessible to the users via the Millennium House office.

Jill, Trish and Norman.

NEW FACEBOOK GROUP FOR ST IVE VILLAGE RESIDENTS

Join our St Ive Community Facebook group!

Our new Facebook group is the perfect place to find out what's happening in your community. You can discuss local issues, share photos and videos, or just chat with other residents about anything that's on your mind. It's also a great way to get involved in village life – whether it be by helping with events or volunteering for one of our committees. We want this group to be an open space where everyone feels welcome and included. So come join us!

There are lots of ways you can get involved within the St Ive Community Group - from organising events and activities to sharing information and ideas, running for committee positions or simply joining in the conversation online. Whatever you choose, we hope it will help make St Ive even better than it already is! And if there's something we haven't covered yet but would like to know more about please let us know as well so we can add it into our plans going forward. We're always looking for new members who want their say on how things work here too! If that sounds like you then come and join us!

Join the group today by visiting

www.facebook.com/groups/stivecommunity/



Bev Casban Memorial Charity: Fundraising

Money has recently been received for charity, in memory of Bev Casban.

Ray Southcott yet again put up amazing Christmas decorations outside his house in Amanda Way and the charity box raised £213.15.

The Bev Casban Memorial Skittles night held at Millennium House raised £200. Congratulations to Bill Batten for winning the event, narrowly beating Dan Hassam by one pin with the last throw.

As a result of the above, £413.15 has been given to The Friends of Pensilva Health Centre. Many thanks to all who donated.

Pensilva Film Club

A great turn-out for our last film night including some previous members who renewed as well as completely new members. I think the movie was well-received with a great performance by Sheila Hancock, an actress I don't really think we see enough of these days. As I write, our choices for the next 3 months haven't been confirmed by C-film, but we hope to show the following films:

Pensilva Film Club (Part of C-Fylm, Creative Kernow)

Presents: At Millennium House, Pensilva

18 Feb. – No Time To Die.

18 Mar. – Amonite.

22 Apr. – Tracks

Please note, it's the 4th Friday in April, not the 3rd as usual.

We are trying to mix-up the genres of films we show in order to appeal to the widest audience possible, so I hope you will bear with us if it's not quite to your taste sometimes. It's still a good, social evening to come out and see friends and "try something new"! We are open to suggestions for movies if there's something you particularly want to see, although, of course, it will depend on whether or not it's available through the C-fylm library.

Cost per movie is £3 for current members and £6 for new/renewing members (which includes the film on that night). Membership is valid at all C-fylm venues throughout Cornwall for one year. Doors open at 7pm with the film starting at 7.30. I would recommend new members coming by 7.15 in order to complete the necessary registration form. The Mel bar is open for drinks before and after the film. Face coverings will cease to be mandatory before the February film but we would kindly ask if people would continue to wear one on entry.

Many thanks for your continued support.

TWELVE YEARS OF WILDLIFE WATCHING IN THE PARISH OF ST. IVE

Since moving to the Parish at the end of 2009, I've been photographing and recording the wildlife I see at my home on the edge of Pensilva on a daily basis. This month I thought I would talk about a bird which I do not see often, but which regularly visits to my bird feeders at this time...

The Blackcap



The blackcap is a warbler which was once considered to be a summer visitor only. Whilst there are about 1,200,000 breeding pairs in the summer, there are only about 3,000 individual birds which overwinter in the U.K. It is a small bird, about the size of a robin. The one above is a male and was photographed in 2020. Its body is grey and it displays the black cap from which the species gets its name. My current visitor is a female and so has a brown cap.



During the summer when food is plentiful, blackcaps are usually only seen in the shrubs around the edge of the garden and are quite hard to spot. As with my current visitor, the feeders become a more attractive proposition in winter. Indeed, it is believed that (alongside *Global Warming*) a primary reason for the increase in overwintering blackcaps is the increasing number of people putting out food for birds, so helping them to survive the colder weather.

Research has shown that, for the most part, the birds we see in the summer are not the same as those we see in the winter. It has been found that our winter visitors return to central Europe to pair up and breed in the spring. Martin Schaefer, a researcher in Germany, has found that they have breeding birds which overwintered here as well as ones which overwintered in Spain or North Africa. Intriguingly, DNA analysis has identified differences between the two groups, which may mean that they are on the way to becoming two separate species! Birds overwintering here have slightly longer thinner beaks which may be an adaptation to using feeders.

Currently most of the birds who come here to breed in spring, overwinter around the western Mediterranean. It is thought that as our weather continues to warm, these too may start stay to breed here.

The blackcap's natural diet is mostly made up of insects and caterpillars. Unusually for warblers, they also enjoy eating berries, with a particular liking for mistletoe.

The blackcap has a beautifully clear and attractive song and is sometimes called the 'northern nightingale'. Recordings can easily be found online if you would like to hear it.

Blackcaps prefer woodland habitats but come into gardens with plenty of shrubs and this fits in with where I sometimes see them in the summer months when they do not usually come to the feeders.

We are lucky to live in the part of the UK with the mildest winters and so have the bulk of the overwintering blackcaps.



Keep a lookout on your feeders and you may well be lucky!

HAPPY WILDLIFE WATCHING!

HILARY

Pensilva WI January Report

We all like it, some more than others, but Pooh Bear loves it! What is it? It's honey of course, and somebody who not only likes to eat honey but produce it came along to Pensilva WI to talk about the honeybee.



Dale Wood was full of interesting facts about the honeybee, bumblebee and the solitary bee. We learned about their lifespan, who does what in the colony and how many bees it takes to make a jar of honey. A honeybee only makes about 1/12 teaspoon of honey in its life so you'd have to be a mathematical genius to work out how many have contributed to the jar.

He also explained how we can all help the bees by providing the right kind of flowers in our garden or even a bee hotel. A garden pond with stones in it is also good so the bee can take a little rest and have a drink in between its collection of nectar. Dale had brought jars of honey for the ladies to buy and they certainly didn't last long.



The birthday girls this month were Jean Hoare, Zandra Patten, Belinda Smith & Jean Cole who all received lovely posies and a card.

The winners of the competitions were – Flower of the month 1st Jenny Kelly, 2nd Mary Yates & 3rd Verna Dawe. The item of cookery containing honey 1st Alison Willis, 2nd Jenny Rendle & 3rd Verna Dawe.

Wednesday 9th February, 7.15pm at Millennium House is the date of the February meeting when Ann Sutcliffe will be talking about 'Women in the Middle ages'. Competitions are flower of the month and an historical artifact.



Volunteer Days 2022

Your chance to get involved with helping to look after your Community woodland.

Sunday 13th February
Sunday 13th March

11am – 3pm.

***** Includes wholesome home-made soup, bread and cake! *****

This is a fun and rewarding way to give a little back to a local community project at a time when caring for our environment has never been so important. It's a great opportunity to meet new people, learn new skills, spend time in the woods and have fun!

Come along and bring family and friends. Those that come along and help get the option to take a share of the timber (once we have put aside the few loads for sale to raise funds for the years' insurance.)

Accompanied children (and dogs on leads) very welcome! Bring hand tools and work gloves if you have them i.e. loppers, bill-hooks and bow saws. We will have a small supply available.

No experience necessary. Training given. Work to suit all abilities and ages.

Come and share some good company and wholesome, productive work.

Please contact us if you would like to come along:
Ele and Anthony Waters: 07421 813976 or mail@pentiddy.co.uk

CITIZENS ADVICE CORNWALL

Citizens Advice has been helping people find solutions to their problems for 83 years and the service has evolved over time as people's needs have changed.

Originally established as a network of local organisations to help people through the maze of wartime regulations, the emphasis has shifted until, today, Citizens Advice Cornwall provides a vital lifeline to many people with various problems such as benefits, debt, employment, housing, relationship breakdowns, discrimination and consumer issues. The coronavirus outbreak has added another new challenge for many people and in the last year, we helped 9,000 people from across the county.

Our advice is free, independent and confidential. We're non-political and non-religious and we help everyone regardless of race, class, income or background.

As a local charity we're embedded in the local community and rely on volunteers across the county as the backbone of our service.

Volunteers come from all sectors of society and can help out by becoming frontline advisers, joining our fundraising team, working as admin assistants, becoming a trustee or working for our research and campaigns section. No previous experience is necessary for our volunteer roles because full and thorough training is provided.

Volunteer adviser, Chloe, said: "What I enjoy most is the rewarding feeling that comes from helping someone find a way forward and knowing we've helped make a difference, no matter how big or small." Another volunteer, Maureen, said: "As well as knowing you've helped someone, you'll also make great new friends."

Citizens Advice also runs projects in Cornwall to help tackle the root causes of common problems. These include advice programmes aimed at people with mental health issues, victims of crime and domestic abuse, those at risk of homelessness, and victims of loan sharks. We also run a specialist advice service for people with a cancer diagnosis, in conjunction with the Macmillan cancer charity.

Citizens Advice has also launched successful education schemes to improve people's financial health and awareness and improve their prospects in life. These include courses to help young, unemployed people understand budgeting and saving; helping vulnerable people with their energy costs and helping new tenants understand their rights and responsibilities when renting a home for the first time.

If you'd like to help others in your community as a volunteer, we'd love to hear from you. For further information go to www.citizensadvicecornwall.org.uk or email volunteer@citizensadvicecornwall.org.uk

If you need help or advice yourself, please contact our team by texting the word **ADVICE** to 78866 and we'll call you back within 48 hours (excluding weekends) or you can call us on 0800-144-8848 Mon-Fri 10am-4pm.



PoSITIVE Community Resilience Project

Repair Café - Skills needed, you can help!

A repair café is a community activity that brings together people who have items they need repaired, with people who have the skills to repair them. We just need a team of willing people with the right skills.

A repair café is a fun, social event that values the expertise of volunteer craftspeople and saves people money, while helping to reduce waste and consumption. We would like to set one up for our parish and we need your skills and enthusiasm. Don't be shy! You don't need to be an expert, you just need to know a bit more than the people who bring their stuff in.

Sewing, mending textiles, fixing gadgets, computers, bicycles, or anything else! If you enjoy helping out your friends and neighbours... Join us to do good and have fun in the process! Just a few hours, once a month.

Tool and knife sharpening, garden machinery / equipment repair, sewing, knitting, darning, woodwork, toys, jewellery, electronics, anything!

email posicrp@gmail.com or message us on Facebook [https://](https://www.facebook.com/posicrp)

www.facebook.com/posicrp or phone / text 07768 130520.

Parish of St Ive Community Resilience Project CIO



News from The Growing Project

The Growing Project is already very well-known to many in our parish, if nothing else from the many articles it has contributed to the Parish Pump over the years. For those who are not so familiar with it, it is a Community Interest Company, founded in 2011 by the late Ruth Wilson, where local volunteers grow and sell organic fruit and veg for the local community. At the same time it provides a safe space for the helpers to enjoy a beautiful, peaceful and healing environment. About three or four years ago, The Growing Project inherited the one-acre site in Pensilva where it is located, but while the facilities there for growing produce are first class, the facilities for the people involved are very basic. So, The Growing Project has launched a crowdfunding initiative to help to finance the provision of electricity, running water, and some toilets. To find out more go to <https://chuffed.org/project/the-growing-project-fundraiser>

SHARE Recycling for Charity project

Continues to grow, Thanks to our enthusiastic volunteers that help monitor collection bins, pick up, sort into boxes and send the vast amount of items to Terracycle every month. By saving these otherwise hard to recycle items from being incinerated, we are generating funds for charities.

SPOTLIGHT THIS MONTH is **SWEET TUBS** (Roses, Celebrations, Heros, Quality Street etc) as well as saving the sweet wrappers we are also collecting tubs for Devon Contract Waste to make garden furniture, raising funds for DARTMOOR ZOO and MIND charity.



ALL tubs need to be dropped to us by **February 28th 2022**

Plus **FERRERO ROCHER** all size boxes, trays & sweet wrappers (no brown paper cases please)

Where to drop your items !

The Recycling project trailer will be out at these locations during **February Thurs. 10th** Launceston TESCO 10:15- 11:15am . South Petherwin by the school 11:30am & Coads Green old phone box 12 noon

Sat. 12th Liskeard Cattle Market 11-12noon &

Pensilva by St John church 12:22 -12:30

Plus we have collection bins at Tamar Valley Country stores Kelly Bray, Stoke Climsland old school car park, Green Meadows Golberdon, Parish Hall Upton Cross, Chybroath North Hill, Horizon Farm shop Tremar, Cheery Buys shop Liskeard and many other places you can drop off.

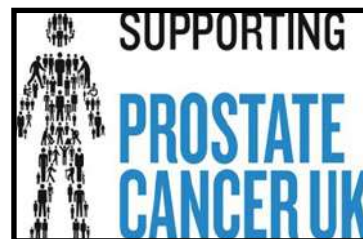
If you'd like more information check our web page www.south-hill.co.uk/charity-recycling join our active FB group <https://www.facebook.com/groups/recycling.for.charity> or you can email SHARE@south-hill.co.uk if all else fails text/call Ali 07305 044049

If you would like to be more involved and would like to learn more about what we do, please contact us or join us when we box up on **Saturday 12th from 12:45pm** at Green Meadows Golberdon, we are located 200 meters from Golberdon crossroads on the South Hill Rd. just around the corner from Keadeen B&B. We'd love to see you there, or another time.. let us know.

THANK YOU FOR THE AMAZING SUPPORT.



TAPS RELAUNCH



Covid 19 has disrupted many groups and organisation. The Steering group has worked tirelessly to provide support to members through zoom meetings, newsletters and one to one telephone calls, but with regret this has not retained our members.

But, as they say, when one door closes another one opens, the fight against prostate cancer will go on through a different programme of awareness. Following the AGM meeting it was decided to promote the message by providing a presence at local shows and events, by giving talks to local organisations and groups. and through leaflets, posters and articles in local newsletters.

Can you help us defeat this cancer, if you are involved in running a local show or events and would like our presence or to give a talk to your group please let us know through one of the contact avenues below.

If you or someone close to you has just been diagnosed and would like to chat with someone who is already living well with prostate cancer diagnosis give us a call we are always willing to listen and give support where we can.

Website:<https://www.tamarareaprostatesupport.org>

Email:tapsinfo555@gmail.com

Paul Mansell 01822 832179 Harry Lawson 01579 383258

John Stewart 01822 833343 Stephen Williams 07735 380883

Supporting Guiding & Scouting Activities in Pensilva 200 CLUB Draw Results for December 2021

**1st No. 160
Ms J Gilbert £75**

**2nd No. 107
Mrs C Perrett £50**

**3rd No. 99
Mrs S Evans £20**

Thank you for your support

VICTORIA INN

The Cross, Pensilva. Tel: 01579 363933

Opening Hours

Mon & Tues: Closed
Wednesday: Lunchtime: Carvery from 12-2pm (see below)
Evenings: 5pm to 9pm
Friday: 5pm to 11pm
Saturday: 2pm to 11pm
Sunday: 12 noon to 6pm
Times may vary when we have functions / live music.

Meals on Wheels Service

Wednesday to Sunday (varied menu)

Please give us a call if this may be of interest to you
or if someone that you know may need our help.

Our full menu is also available for delivery or to eat in.

Wednesday Evening - Homemade Pie Night (varies weekly)

Also includes a dessert. **£9.95**

Please check our weekly 'Specials'

Thursday Evening - Curry Night (Eat in or Takeaway) **£6.00**

Friday & Saturday Evening - Fish, Chips & Peas Special

Small **£5.95**, Large **£7.95**. Add a dessert for **£1.00**

Sunday Carvery 12noon to 3pm **£9.50** (Collection, Delivery or Eat in)

Wednesday Lunchtime Carvery will be starting on

2nd February: 12-2pm.

Carvery & dessert £9.95 (OAP Special).

Please phone 01579 363933 to book.

Teatime Church



For pre-schoolers and their families

Sunday 13th February

3.45pm

St John's Church
Pensilva

Sharing a Bible Story

Playing Games

Singing and Praying Together

Eating Tea



Teatime Church will be held on the 2nd Sunday of each month
at St John's Church

For more information contact: Rev Becca Bell
Rev Li Selman

revbeccabell@gmail.com
revliselman@icloud.com

St John's Church Christmas 2021 Charity Fund Raising

*Thank you to everyone
who donated*

These charities have
benefitted from the
donations so
generously given:

*The Children's Society
£110*

*Action for Children
£110*

*St Petroc's
£75*

*STERTS
£50*



Thank you, Sue & Graham
for the crib scene: £115 donated

St John's Church Good Grief Cafe

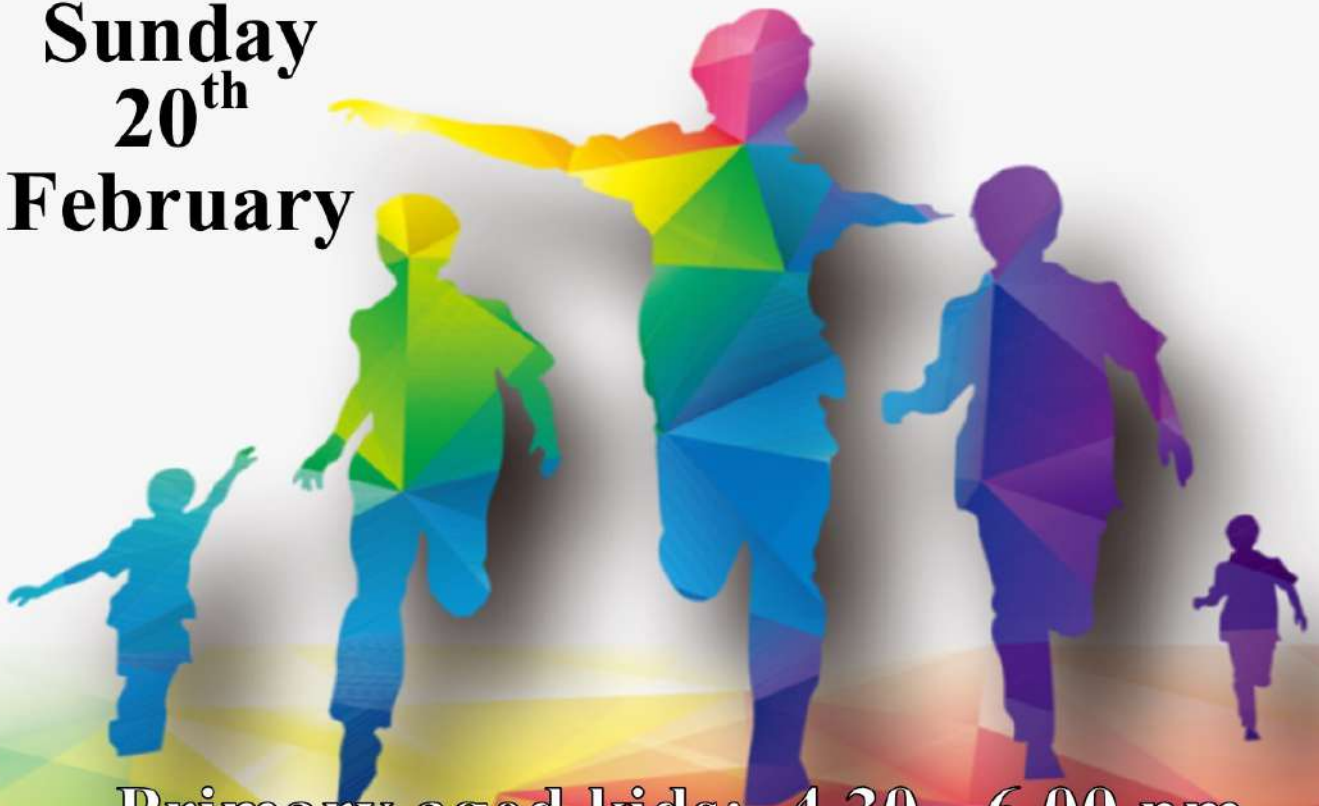
There is no right or wrong way to grieve.
We aim to bring the bereaved community
together, with time to share experiences and to
bring comfort to one another in what can be an
isolating and lonely time. There is no agenda,
just free tea, cake, chat and friendship.
All are welcome, and please use this as an
opportunity to invite someone.

Wednesday 16th February 3.00 to 5.00 pm
Contact Geoff on 01579 362698

T. Tribute
K. Kids and
Y. Youth

**The
Tribute
Cluster
of
Churches**

**Sunday
20th
February**



Primary aged kids: 4.30 - 6.00 pm

Tea for all: 5.30 pm

Secondary aged youth: 5.30 - 7.30 pm

at

Menheniot Parish Church

To book a place contact: revbeccabell@gmail.com



**St John's Church
Pensilva**

**on the
last Tuesday
of the month**

2.00

To

4.00 pm

**Contact Kathleen
01579 363686**

**Tuesday
22nd
February**

PENSILVA MEMORY CAFE

If you have memory problems or you are a carer for somebody who does, and would like to meet others who understand your situation, then join us at St John's Church



Thursday 24th February 2.00 to 4.00 pm

Contact Geoff on 01579 362698

ST JOHN'S CHURCH, PENSILVA

A united congregation of the Church of England & the Methodist Church

Services for February 2022

Sunday 6th 11.00 am Revd Andy Day *Holy Communion*
 Sunday 13th 11.00 am Café Church
 Sunday 20th 11.00 am Revd Martin Sellix *Holy Communion*
 Sunday 27th 11.00 am Revd Sue Hill
 5.00 pm Food for Thought

Thursdays 10.00 am Morning Prayer Fellowship

EVENTS

Sunday 13th 3.45 - 5.00 pm Tea Time Church for families
 Wednesday 16th 3.00 - 5.00 pm Good Grief Café
 Tuesday 22nd 2.00 - 4.00 pm Knit & Natter
 Thursday 24th 2.00 - 4.00 pm Memory Café

For further details of the services and events at St John's, or if you know of any illness or need in the village, please call Geoff, 362698 or Frances, 363718

St Ive Methodist Chapel

Services for February 2022

Sun 6th Feb	3 pm	Rev Jonathan Budd with communion
Sun 13th Feb	3 pm	Locally arranged service
Sun 20th Feb	11:15am	United Service at St Ive Parish Church
Sat 27th Feb	3 pm	Keith Mutton

Millennium House Coffee Shop Opening Hours

We are open Tuesdays, Wednesdays and Fridays, 9am to 1pm
(to coincide with Post Office days).

Our intention is to open more days and for more hours as soon as Covid regulations allow.

Covid precautions are in place at all times, providing a safe environment for our customers.

All Being Well

We are still open for three mornings a week. A maximum of six members can now attend at one time.

Opening hours:

Monday, Wednesday and Saturday, 9am to 1pm.

Maximum six members at a time for each of three slots within each session: 9:00 to 10:20, 10:20 to 11:40 and 11:40 to 13:00

Prior booking is essential

To book yourself in or for any enquiries, call in at the gym or telephone on **01579 363890**, during the opening hours listed above.

22 years working in our local community to improve health, fitness and well being.

Badminton has restarted at Millennium House

Come and join our relaxed and friendly group.

Mon & Tue 7:30 - 9:30pm

For further info phone Nigel or Carol on 01579 363594 or 07885 798370

PENSILVA VILLAGE HALL

We are now open and back in business!

Anyone wishing to book the hall for meetings, birthday parties or fundraisers, please contact Peter or Jackie Browning on **01579 363212** or email **peterpensilva@gmail.com**



Please note that as well as hall rent there is a coin meter for

MOBILE LIBRARY

The County Mobile Library is back. It visits our area once a month on Fridays of "week 3" (not necessarily the 3rd Friday of the month).

Next visits: **Feb 11, Mar 11**

Stops at The Victoria Inn, Pensilva, 10.25-10.45am; Quethiock bus stop 11.00 to 11.20am.



Struggling with Sight Loss?

iSight Cornwall offers practical help to people living with sight loss in Cornwall including:

Low Vision: Advice for low vision aids

Assistive Technology: Advice on products

Benefits Advice: Assistance to claim entitlements

Equipment Demonstration: Advice on gadgets

Social Clubs & Activities: Links to clubs & activities in the county

For more details Telephone 01872 261110 or visit

www.isightcornwall.org.uk

MILLENNIUM HOUSE

COMMUNITY CENTRE, AND DYNAMIC EVENT
VENUE IN THE HEART OF EAST CORNWALL



Conferencing

We have four meeting rooms for all your corporate needs.



Function Room

For parties, discos, or just larger events; with adjoining kitchen and bar.

Our Facilities

Sports Hall

For sports or larger events requiring a stage, the sports hall is our biggest venue.



Coffee Shop

Providing tea, coffee and cake. And for something stronger, there's the Mel, a licensed bar.



Enquire today:
01579 363096

www.millenniumhouse.org.uk
PRINCESS ROAD, PENSILVA, PL14 5NF

What Do We Do?

From wedding to wakes, kids or adults, corporate or community, we can host and cater your event. If you have an idea that's not covered here, get in touch and see if we're the right venue for you.

We're also home to:

- ✓ The Mel bar
- ✓ All Being Well Fitness Centre
- ✓ Post Office
- ✓ Sunflower Park kids playground
- ✓ Extensive playing fields
- ✓ Community Library



Looe & South East Cornwall

Looe office number: 01503 770752, or mobile: 07443 277074
or email cornwallskills@wrecltd.co.uk

Traineeships: Age 16 – 24 - Maths & English Functional Skills, Digital Skills, 1:1 support, 70 hour work placement and more.

We pay £6pp per day travel costs, £5pp per day lunch costs and £35 per day childcare costs.

COMPASS: Age 16-24 - 1:1 tailored support with next steps. Build your CV or Upskill your qualifications. Get support with confidence, motivation or life skills.

Vocational courses: Age 16+ (no upper age limit)

Many of these courses can be delivered in locations across Cornwall:

CSCS Training

Introduction to Customer Service with Level 2 Food Safety & Catering

Introduction to Working with Children - Level 2 Safeguarding

Health & Safety in the Workplace Level 2

First Aid Level 3

***All of our programmes offer the unique opportunity to spend 2 weeks in Spain on a work placement with all costs covered**



Bargain Corner Free Ads up to £50

Ads are free for items up to £50. £5 charge for items over £50. Please ring the Parish Office on **01579 363096** or leave a note at Millennium House reception or email **parishpump@btconnect.com**.

*****Please let us know when your item has sold*****

Commode in very good condition. Free for anyone to pick up here in Pensilva.
01579 362719

Wood and cast iron **Patio Set**. 2 chairs, bench seat and table. Buyer collects. **£45**
01579 363626.

Electronic, arm-type **Blood Pressure Monitor**, used once. Not suitable for those with a pacemaker. **£15**.
01579 362698.

Ladies Superdry Jacket. Size Med. Good condition. **£15**. **01579 346982**.

Gazaco **Child's Car Booster Seat** used once only. Brand new car seat protector for above. **£30**.

Exercise bike with program booklet **£50**.

Bayliss **automatic greenhouse window opener**. Brand new, never used. **£15**.

01579 362688

Please let us know when your item has sold

Long handled garden fork in VGC. Ideal to prevent back strain when digging or removing shrubs. **£15**. Collection Only, **2 electric drills** in working order with chuck keys **£15** for the two.

Brand New **Vinyl Flooring** for kitchens, bathrooms or hallways 13ft long x 2ft 11 inches wide. Colour light to mid grey. **£25**.

Early 19C / late 18C **cast iron fireplace faceplate** in GC, 36" high x 24" wide. Ideal as a fire faceplate or ornament. **£35**.

Six coils of industrial steel cable now surplus to requirements **£35** the lot.

01579 384658 (Safe Distancing if reqd.)

2 short legged wetsuits. 1 x 38" chest and 1 x 42" chest. Used once. As new. **£20 each**. **01579 362128**.

Canon IP2700 **Printer**. **£20**

Computer screen 19" **£20**.

Epson Perfection v350 **Scanner** Photo **£20**

Sony Revia 42" **TV**. **£45**.

All in working order. **01579 363200**

Set of 3 **suitcases**, red, vgc, Antler, **£40** ono. **07770 747353**. Pensilva area

Set of **Snow chains**, new and unused. Fit 14" to 19" rims, self adjusting. **£40**

Pensilva **01579 362207**

ADVERTISING SECTION

TO OUR ADVERTISERS: Firstly, thank you for advertising in the St Ive Parish Pump. Your support enables us to provide a much-valued monthly newsletter to our parishioners, while also giving businesses in our area affordable access to a sizeable local market of grateful consumers.

New advertisers will be asked to pay in advance and their advertisements will not be included until the edition following the 15th day of the month in which payment is received. Advertisers who are behind with their payments will have their adverts removed from subsequent editions until payments are brought up to date. To make it easier for you, we are adding a facility to pay by card over the phone.

Advertising prices:	Net of VAT		Including VAT	
	1 month	12 months	1 month	12 months
Quarter Page:	£ 8.33	£83.33	£10.00	£100.00
Half Page:	£ 16.67	£167.67	£20.00	£200.00
Full Page:	£ 27.50	£275.00	£33.00	£330.00

Thank you, once again, for advertising in our newsletter. We hope that you will continue to do so, and we wish you every success with your business.

Debbie Hicks - Counselling and Psychotherapy

Caring, confidential counselling for all.

I work in a therapeutic relationship to help you understand yourself better.

I offer a warm, approachable, relaxed environment for you to untangle your thoughts and emotions.

More info on my website or by contacting me.

www.debbiehickscounselling.co.uk

Email: debbiehicks10@gmail.com

07851 133782



TRADITIONAL STONE SERVICES

CLASSIC & TIMELESS STONE MASONRY AND LETTERING

MEMORIAL CLEANING

COMMISSIONS TAKEN

01579 363693 OR 07507 782282

Find us online:
fresh_prop.co.uk



Top quality carpet, upholstery & hard floor
cleaning services based in Callington
Long-established cleaning professional
Domestic & commercial
NCCA qualified & member
Steam cleaning & dry carpet cleaning
Tile & grout + natural stone clean & seal
Vinyl & LVT including Amtico & Karndean
Call 0800 3893393 or 07905 188459
Or email nevil_fresh@msn.com

ADVERTISE HERE!

For just **£10 per month incl**
VAT.

2 MONTHS FREE for a
12 month order. i.e. **£6.94 incl**
VAT per month for 12 mths

See the full tariff on page 3

One thousand copies per
month distributed free of
charge to households in the
Parish of St Ive.



Domestic Electrical
Property Maintenance
Interior & Exterior Work
Carpentry :: Decking
Kitchens :: Bathrooms
Wall & Floor Tiling
General Plumbing

MCCARTHY PROPERTY MAINTENANCE

**Electrical Safety
Register** incorporating
ELECTSA  ECA
Certification Ltd

HIGHLY REGARDED LOCAL BUILDER
COMPETITIVELY PRICED
COVERING THE SOUTH WEST

Contact Dominic

07968 599 675
01579 362 945

info@mccarthypropertymaintenance.co.uk

www.mccarthypropertymaintenance.co.uk



Maintaining and preserving our
countryside for the benefit of all

Dry Stone Walls

Cobblestoning

Stone faced walls

Hedgelaying/steeping

Land management

All aspects of Landscaping

Mobile: 07539 296799 or

Email: info@just-in-stone.co.uk

Naomi's Footcare Service

I provide a personal toenail-cutting service within the comfort of your own home.

To include removal of calluses, corns, hard skin, and reduction in thickening nails.

- ✓ Trained foot health practitioner.
- ✓ Fully insured
- ✓ DBS checked.

naomiturner84@gmail.com

07809 690385



JJ MOSS

THE MILKMAN ON YOUR DOORSTEP

01579 349093 - 07882 618 488

JJMOSSMILK@GMAIL.COM

WE ARE A FAMILY RUN BUSINESS BASED OUT OF LISKEARD.

FRESH FRUIT & VEG, BAKERY GOODS, BUTCHER MEATS & POULTRY, FRESH FISH, FREE RANGE EGGS, ALL DAIRY GOODS, PRESERVES & JAMS, HOUSEHOLD ITEMS, ALL

WITH NO DELIVERY CHARGE

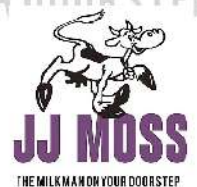
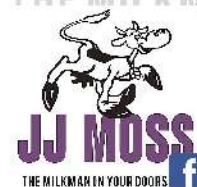
WE CURRENTLY DELIVER IN YOUR AREA ON MONDAY / WEDNESDAY / FRIDAY.

WE ALSO OFFER DELIVERY OF NEWSPAPERS & MAGAZINES MONDAY - FRIDAY

PLEASE FEEL FREE TO PHONE / EMAIL WITH YOUR ORDER / ENQUIRY.

THANK YOU FOR YOUR SUPPORT!

JJ & EVE



JP'S FRESH HOT FOODS

HOMECOOKED SPECIALS AND DESSERTS

INCLUDING REGULAR TAKEAWAY MENU

THURSDAYS - 4PM - 7PM, EAST TAPHOUSE HALL CAR PARK

FRIDAYS - 4:30PM - 7:30PM, PRINCESS ROAD PENSILVA

LOCAL FOODS FRESHLY COOKED

CASH OR CARD ACCEPTED - PRE-ORDERS WELCOME

TEL. 07966 994585



JP'S FRESH HOT FOODS

EVENTS TAILOR-MADE AND CATERED FOR WEDDINGS, BIRTHDAYS AND ANY CELEBRATIONS.

PLEASE CALL FOR ANY FURTHER INFORMATION.

Westwood Garden Maintenance



Antony Watts

Grass Cutting, Clearance

Weeding, Turfing

Hedge Cutting

Patio Cleaning, Planting

Regular Visits / One-off Contracts

Residential & Commercial

FREE ESTIMATES

01579 362019 www.westwoodgm.co.uk 07952 094472

JPH Plastering and Rendering

Internal plastering

Internal and external rendering

Internal/external painting & decorating

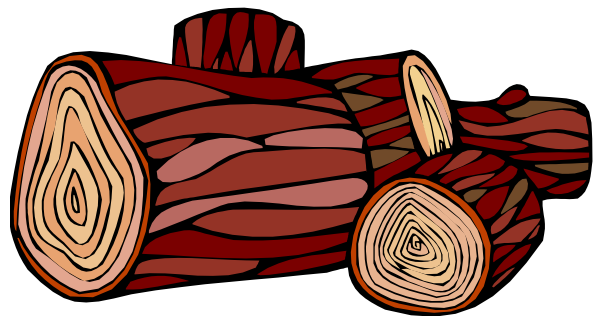
Property maintenance

Landscaping and land management

For estimates and no obligation quotes
contact Justin on:

07539 296799 or
info@just-in-stone.co.uk

SEASONED LOGS



MIXED LOAD

or

HARDWOOD

Tel. Jonathan

Mobile 07966 070725

or

01579 363157

PENROSS

Rosecraddoc Lodge Holiday Bungalows
(Between Pensilva & Lisheard)

Ideal for family & friends coming to visit!



Refurbished in 2018. Sleeps 4. Electric, heating, bedding & towels inc in rent. Patio. Free wi-fi. Follow us on Facebook.

Sorry no pets or smoking.

Contact Julie Tucker on 01579 362221 or

email penhargetfarm@gmail.com

for 15% discount

NICOLA GREENE

BSc (hons) Podiatry MChs

HPC Registered Chiropodist/Podiatrist

**Home Visit Practice treating all
your foot care needs:**

- Nail Cutting
- Corns and Calluses
- Thickened Nails
- Dry Cracked Skin
- Verrucae
- Foot Pain
- Diabetic Foot Assessments
- Wound Care

T: 01579 590027

M: 07786164205

E: nicki_greene@yahoo.com

Matt's Windows

**Repair of Windows, Doors
& Glass Unit Replacement**

T: 01579 641228

M: 07533 387368

Debbie's Care Services
Tel. 0777 948 3230

Hello, my name is Debbie. I am a local lady who has been working in the community for over 30 years.

I provide the following services and more!

- Assisting bathing / showering
- Preparation of meals
- Cleaning / Shopping / Ironing
- Companionship / Friendship and emotional support
- Assisting with mobility
- Day, Evening and Night Care

MUST STEP
PODIATRY
HCPC Registered
podiatrist

Fully insured
NHS experience
Kind and caring
Home visits

All your footcare needs
Most areas covered
Tel: 07522 577012 or
07561 608296

DO YOU NEED A HELPING HAND?

Reliable, friendly,
experienced, mature
local resident offering
the following services:

Cleaning Ironing

Shopping Light Gardening Dog Walking

CRB/DBS checked and fully insured. Competitive rates.

Contact Jess: Telephone or text: 07934 764 327.

Email: homeangel77@yahoo.com. Find us on Facebook





KV Accounting Solutions

ACCA

Local Accountant offering fixed fee accounting services

With over 20 years experience, I am a fully qualified, friendly, local accountant

- | | |
|---|--|
| ✓ Annual Accounts for Sole Traders and Partnerships | ✓ Self Assessment tax returns |
| ✓ Book Keeping & Payroll | ✓ iXBRL tax filing |
| ✓ Personal Tax Planning | ✓ Tax investigation Fees Insurance |
| ✓ Company Accounts | ✓ Company Secretarial work |
| ✓ Business Support & Advice | ✓ Tax calculations for Sole Traders and Partnerships |

Kate Vaughnley FCCA - Chartered Certified Accountant
Website : www.kvaccountingsolutions.co.uk or Email : katevaughnley@gmail.com
Telephone : 01579 364083



Gas Services
NATURAL GAS - LPG - OIL
BOILER INSTALLATION
BOILER SERVICE & REPAIR
LONG WARRANTY FREE QUOTES
07859848288
bagasservices@outlook.com





Affordable Counselling

Caring, confidential,
non-judgemental

- Increased confidence and self esteem
- Help to cope better at difficult times
- Improved relationships
- Clarify confused thoughts & feelings
- Assertiveness
- Personal insight
- Improved emotional health
- Available for youth and adults

Isabelle McGarahan BA, PGCE
Dip in Therapeutic Counselling,
Accredited ACC, DBS cleared
www.im-counselling.org email:
isabelle@im-counselling.org
01579 344090/07857326229



P BRADLEY PLUMBING & HEATING

Email: info@pbplumbingheating.co.uk

Web: www.pbplumbingheating.co.uk

Facebook: @PBradleyPlumbingandHeating

NO JOB TOO BIG OR SMALL

24hr Emergency Call Out

Based in Liskeard

Call Today 07598956760

***"The complete bathroom
installation service"***

**New bathrooms fitted,
floor and wall tiling specialist**

General Plumbing including:

- Bathroom makeovers
- Dripping taps and burst pipes
- Pump and cylinder changes
- Radiator upgrades and additions
- Specialist in Leadwork
- No job too small
- No Call out charge



Friendly Service, Quality Work

NO VAT

**City and Guilds Qualified
established 1983**

Call William Hale on

Tel: 01579 362132 Mobile: 07826 699719



Kiln Dried Firewood
Kindling & Firelighters
Eco Heatlogs
LPG Bottled Gas
Patio, BBQ & Camping Gas
Coal & Smokeless Fuel



0800 8021 223
sales@loganslogs.co.uk
www.loganslogs.co.uk

Heel 2 Toe Footcare

Tired Aching feet.

Corns, Hard skin, Verruca.
Fungal infected toe nails, or
toe nails require cutting.

Diabetic feet also treated and
regularly checked.

I can help to keep your feet
looking and feeling good.

I am a trained Foot Health
Practitioner to Diploma Level, fully
insured & DBS checked.

I can do home visits via an
appointment.

Call Penny: **07746 926146** for
further information. **Please note
new number May 2021.**

MARK FITCH CHIMNEY SWEEP

- * BRUSH & VACUUM
- * CLEAN, RELIABLE SERVICE
- * COVERING ALL S.E. CORNWALL
- * DISCOUNT FOR MULTIPLE CHIMNEYS
- * COWLS & GUARDS FITTED
- * STOVES SERVICED



*Call
Mark on:*

01579 350762
07773 462643



QUALIFIED RAYNOR MASSAGE THERAPIST

RELAXING AND THERAPEUTIC MASSAGE TREATMENTS

Effective for many different types of chronic pain, sports injury, stress and tension related problems



CBD massage now available

APPOINTMENTS AVAILABLE AT

LISKEARD THERAPY CENTRE
LISKEARD PL14 3JB

THE WELLBEING CENTRE
LISKEARD PL14 6AT

Contact : Tina North

Phone : 07720 832322



Website : massage-therapy-cornwall.co.uk



R J Gardening & Handyman Services

All aspects of gardening and handyman work undertaken.

- ~Local and Trustworthy
- ~Hard Working
- ~Reliable and Experienced
- ~No job too small
- ~Competitive rates

Contact Raymond on:

07541 229064 or 01579 347622

raymond_pearcegb@yahoo.com

Find us on Facebook.



Fencing
 Paths & Steps
 Turf & Astro turf
 Driveways
 Retaining walls
 Digger work
 Footings & foundations

Patios
 Rendering
 Decking

And more

Free no obligation quotes

Call Rob on:

**07518246666 or
 01579 641802**

Window Cleaner
Window Cleaner

Also any upvc cleaned

i.e. fascias, gutters, etc.

gutters cleared & unblocked

Please phone Rob

07709 053464

Window Cleaner
Window Cleaner

Save Costly Energy!



SOLARTEC Windows & Conservatories Ltd

**'A' Rated WINDOWS & DOORS
 at BEST PRICES EVER!**



Professionally fitted and finished by us with a
 10 year ins. guarantee.
 In all colours



NEW

**FACTORY SHOP
 SUPPLY ONLY**

For all your windows, doors, conservatories,
 fascia, trims, guttering and sealants

**7-10 DAY TURN AROUND ON WINDOWS,
 DOORS and CONSERVATORIES**

TEL: 01579 343425

FAX: 01579 344500

WEBSITE: www.solartecwindows.co.uk

EMAIL: sales@solartecwindows.co.uk

KEEPING JOBS IN CORNWALL

PJR Garden Services

Phil Rule

All aspects of garden work - grass / hedge cutting, patios, fencing etc.

Mobile 07387 449004



Group Travel

Day Trips & Coach Holidays

Enterprise Park, Midway Road, Bodmin, Cornwall PL31 2FQ

Coach Excursions & Tours 2022

12th March 2022
24th - 29th April 2022
30th April 2022
6th May 2022
19th May 2022
8th - 9th July 2022
17th - 21st Sept 2022

Crufts, The Worlds Greatest Dog Show
Chester, Liverpool & the Beatles
Tobys Garden Festival, Powderham
Steam Train & Kents Cavern
Cruise the English Riiviera
Hampton Court & Kew Gardens
Llandudno, North Wales



Visit our website for all our excursions & tours and download a PDF version of our 2022 brochure.

Call: 01208 77989
for bookings and brochure

website: grouptravelcoachhire.co.uk
email: grouptravelcornwall@btconnect.com
facebook: [facebook.com/grouptravelcwl](https://www.facebook.com/grouptravelcwl)

Bodmin MOT Centre

01208 77989

Garage Services
MOT Testing Station
Classes 4, 5 & 7
Servicing & Repairs
High Vehicles & Motorhomes
Brake Test & Headlight Alignment
Pre MOT Inspections
Annual & Interim Vehicle Servicing
~
Commercial interim inspections available
including brakes and lights
~
Helping you stay compliant

Bodmin MOT Centre at Group Travel
Enterprise Park, Midway Road,
Bodmin, Cornwall PL31 2FQ

Martin Hoare – Local, Reliable, Competitive



WHEEL DIGGER FOR HIRE
ALSO AVAILABE 'BREAKER'
AND NEW CONCRETE
'CRUSHER BUCKET'

ALL AT COMPETITIVE RATES

GROUND WORKS
DRAINAGE
NEW DRIVEWAYS
SEPTIC TANKS &
'SOAK AWAYS' INSTALLED



LASER LEVEL FOR HIRE
QUOTES AVAILABLE



Phone 01579 363517

or

Mob 07863 291213



INDEPENDENT FAMILY FUNERAL DIRECTORS

Supporting families to arrange funerals with sensitivity, dignity and care.

- Flexible, caring approach, tailor-making funerals to suit your needs and budget.
- Open and transparent, affordable pricing.
- Free bereavement support sessions, open to all in our community, first Wednesday of the month, 10am - 12pm.
- Prepayment Funeral Plans available

For details of our services and prices, visit our website.



01579 362358 | www.fdhallfunerals.co.uk



Avalennek, Caradon Town,
Upton Cross, Liskeard
Cornwall PL14 5AR
Telephone 01579 363598
Mobile 07901 538132
chrisrounsevell@tiscali.co.uk

HOG ROAST EQUIPMENT HIRE AND MEAT SUPPLY

Hog Roasts For Those Special Occasions
Self Catering or Hassle Free Service
Everything done to your special requirements

CHRIS ROUNSEVELL
TRADITIONAL BUTCHER

Come and visit our recently updated
Tile & Bathroom showroom in PENSILVA

We offer a generous discount to all Pump Readers

Unit 24 Pensilva Ind Est, St Ive Road, Cornwall PL14 5RE 01579 362264



CORNWALL TILE
CENTRE

Pensilva Showroom

Open Mon - Fri 8.30am - 5pm
Saturday 9.00am - 1pm

Tiles & Mosaics for:

Bathrooms & Kitchens Living Areas Conservatories
Patios & External Areas Wet Rooms & Spas Swimming Pools
& All Commercial Applications

 atlas concorde

www.cornwalltile.com

OPEN FOR RETAIL, TRADE & COMMERCIAL ENQUIRIES



THE HOME OF WOOD

BULK DISCOUNTS AVAILABLE ON OUR 30 YEAR SERVICE LIFE POSTS



OUR GOLD TREATED STAKES AND POSTS ARE THE ONLY ONES AVAILABLE IN THE UK THAT ARE APPROVED BY THE WPA BENCHMARK FOR 30 YEAR SERVICE LIFE

For more information please contact one of our team



Bond Timber, Bake Sawmill, Trerulefoot, Saltash, Cornwall,

PL12 5BW

01503 240 308 stacy@whbond.co.uk

Pensilva Stores

Amazing Value

Premier
a great deal more from your local store
Mon-Sat. 7:00 AM. - 9:30 PM.
Sunday 8.00 AM. - 9:30 PM.

- ✓ Fantastic Special Offers every month!!! (See store leaflets)
- ✓ Come and Check out our great deals on Wine, Beer and Spirits
- ✓ Local Produce: Homemade Butter and Clotted Cream, Meat from our local butcher
- ✓ Cornish Fresh Fruit and Vegetables
- ✓ Fresh Bread, Pasties and Cakes
- ✓ Take Away Coffee, tea and hot chocolate
- ✓ Newspapers and Magazines, Greeting Cards
- ✓ Paypoint, Lottery

* **Free to use ATM** *

* **Card Payment** *

Friendly Staff + Service with a Smile !!!

Pensilva Stores is a family run business who have been serving local people and visitors for more than 21 years.

Higher Road, Pensilva, Liskeard, Cornwall PL14 5NQ

Tel: 01579 362547

MENDOLOGY

Garage Door Specialist

- Repairs
- Servicing
- Installations


Out of hours service
call Dave anytime 07974 442645

MENDOLOGY COMMERCIAL DOORS LTD
www.mendologydoors.co.uk

01579 363760

PensilvaCars

01579 363516

- ✓ MOTs Class 4
- ✓ Service
- ✓ Repair
- ✓ Tyres
- ✓ FREE Courtesy Car
- ✓ Car & Van Sales
- ✓ Diagnostics
- ✓ Air Conditioning
- ✓ 

We have offered a supply, fit & balance of tyre service for 10 years at competitive prices.

Most of our tyres can be supplied the same day.

LOCAL RECOVERY £45.00

www.pensilvacars.co.uk

pensilvacars@hotmail.co.uk

We can service and repair your car to manufacturer specification, keeping your dealer warranty without main dealer expense.





KEITH RICHARDS

Motor Body Repair Specialists

A family run business with fully equipped & maintained workshops & a focus on
Customer Care

- ◇ Motor Body Repair Specialist
- ◇ Mechanical Repairs
- ◇ Servicing to All Makes & Models
- ◇ Computer 4 Wheel Alignment
- ◇ 24 Hour Recovery Service
- ◇ Renovations & Re-sprays
- ◇ Member of RMI (Retail Motor Industry Federation)
- ◇ Latest Diagnostics (including specialists for VW, Audi, Seat, Skoda & Vauxhall)

With over 30 years' experience we aim to provide you with:- Value for Money -
Friendly Service - Professional Approach - Expert Advice that you Can Trust
(Visit our website for more details)

Pensilva Industrial Estate, St Ive Road, Pensilva, Liskeard, Cornwall PL14 5RE

Tel: 01579 362593

Email: keith@keithrichardsmotorbody.co.uk

Fax: 01579 363194

Website: www.keithrichardsmotorbody.co.uk

Wm. Newham & Sons ^{Est. 1835}

Proprietor Robbie Savill AWCB

**CHIMNEY SWEEPS
& BLACKSMITHS**



CHIMNEY SWEEPING

BIRD GUARDS, COWLS & POTS FITTED

CCTV INSPECTIONS & SURVEYS

STACK REPAIRS & REBUILDS

RIGID STEEL SYSTEMS ERECTED

STAINLESS STEEL and PUMPED CONCRETE
CHIMNEY LINING

STOVES SUPPLIED, INSTALLED & REPAIRED

FIREPLACE ALTERATIONS & RENOVATIONS

FULL RANGE OF FIREPLACE FURNITURE
made to order

01579 347777

need somewhere to stay ?
between homes ?
family/friends visiting ?

Cutkive Wood

Holiday Lodges

ideal for Pensilva
& St.Ive

please call Jackie on
01579 362216

J. J. Child

Plumbing and heating engineer.

Oil appliance service, repair and breakdowns.

Over 30 years experience

Call John: 01579 362336 or 07837 921086





Pensilva & St Ive Post Office Service

Pensilva: Through the Café on the 1st floor of Millennium House

Tuesdays: 9am to 1pm.

Wednesdays: 9am to 12 noon.

Fridays: 9am to 12 noon

**The Millennium House
coffee shop is also open on
these mornings.**

.....

St Ive: At St Ive Village Hall

Wednesdays: 10:30 to 11:30am

**Coincides with the St Ive
Village Hall Coffee Morning**

Saint Ive Parish tree-planting survey

Please let us know about any trees that you plant within the Parish. We will include them in our own survey and we will notify the Forest for Cornwall on your behalf, if appropriate.

email posicrp@gmail.com or message us on Facebook

www.facebook.com/posicrp or phone 01579 364016.

Pictures very welcome.

