

THE PARISH PUMP



January 2021
Edition 482



The Newsletter for the Parish of St Ives



Whoops-A-Daisy Angel at Pensilva Primary School.
(Report inside)

Disclaimer

The articles appearing in this magazine do not necessarily reflect the views of the Parish Council nor of the Parish Pump Editor.

Parish Councillors Telephone List

Alan Moss (chair)	01579 362064	Ivor Vaughan (vice-chair)	07979 934604
James Bruce	07411 192645	Marlene Carr	01579 362919
Martin Corney	01579 382450	Sandra Doe	01579 363096
Rosemary Farley	01579 384810	Nigel Gisby	01579 363096
Ron Greenhough	01579 363096	Tony Hodson	07973 536964
Nigel Libby	07968 891814	Paul Mann	01579 363757
Craig Vaughnley	01579 364083		

Meetings of St Ive Parish Council

Meetings are now being held when possible. Please see the Parish Council website for meeting dates, agendas and minutes.

<http://st-ive-parishcouncil.gov.uk/minutes-agendas/>



Devon & Cornwall Police
Building safer communities together

 **101**

Minicom 18001 101

Police Community Neighbourhood Office

Your Community Support Officer is PCSO Steve Edser 30173.

email: CIOSNBMLiskeard@devonandcornwall.pnn.police.uk

To report a crime call 101 or go to www.devon-cornwall.police.uk

In an emergency call 999

Contact details for St. Ive Parish Council and for Millennium House

Address for correspondence: Millennium House, Century Square, Pensilva PL14 5NF

General Parish matters should be raised initially with the Parish Clerk, Jenny Hoskin, who will present them to the Parish Council.

Telephone: 01579 363096, email: stiveparish@btconnect.com

For accounts matters for the Parish and for Millennium House contact John Body, Finance Officer: 01579 362102, email: millenniumhouseadmin@btconnect.com

Millennium House enquiries and reservations: 01579 363096

email: millenniumhouse@btconnect.com.

On the web: Millennium House Website: www.cornwallvenue.com

Parish website: st-ive-parishcouncil.gov.uk Facebook: facebook.com/stiveparishcouncil

PARISH PUMP ADVERTISING COSTS - NOTICE OF INCREASE.

The prices for advertising in the Parish Pump have increased with effect from the January 2022 edition, the first increase since December 2012.

The new prices (including VAT at 20%) will be as follows:

Quarter page: £10:00 per month or £100:00 for 12 months.

Half Page: £20:00 per month or £200:00 for 12 months.

Full Page: £33:00 per month or £330:00 for 12 months.

Parish Pump Information and Contact Details

To contact the editor please email: parishpump@btconnect.com

or phone the Parish office: **01579 363096.**

Hardcopy submissions by post or by hand to the Parish office, Millennium House.

Softcopy submissions: By email to the editor in MS Word, MS Publisher, pdf, Tiff or jpeg. Please use A4 pages and minimum 16 point font as the Pump is initially produced in A4 size and reduced to an A5 booklet at the printing stage. If in doubt please contact the editor.

Current Advertising Prices including VAT at 20%

Per issue: Quarter Page £ 10 Half Page £ 20 Full Page £ 33

12 months: Quarter Page £100 Half Page £200 Full Page £330

Bargain Corner free ads by email to the editor or drop off at the Parish Office.

Deadline for the Parish Pump is STRICTLY 15th of every month

From the Editor

I'm up against it for time and, for once, I haven't got much to say. So I'm going to spare you an editorial this month, just

Happy New Year Everybody!

And leave it at that.

Keep safe and well.

Joe

St Ive Village Hall

Gardening Club	1st Monday monthly 7:30pm	01579 382762
St Ive Snooker Club	Monday & Thursday 7:00pm	01579 382315 R Bunkum
Yoga	Tues 4:30-6.00 & 7:00-8:30pm	07947 785554
Post Office	Wednesday 10:30 - 11:30 am	
Coffee Morning	Wednesday 10:30 - 12:00	

St Ive Village Hall is available for hire, £3.50 per hour. Includes the use of the kitchen & electric (excluding wall heaters, which are on a £1 coin meter)

Contact Sue Sedgwick on 01579 383291

Hall meetings are now held quarterly on the third Monday of the month in January, April (includes the AGM at 7pm) July and October at 7.30.

CHAIRMAN'S REPORT - JANUARY 2022

I hope you all had a good Christmas and new year, it's still a bit strange with the uncertainties of COVID restrictions.

The Booster Vaccinations continue, but dates are somewhat intermittent.

The new flooring in the function room of the Mel is a success, with the two skittle alleys now in use.

We don't know what the next year has in store, but we will continue, and look forward to the spring and summer.

Alan Moss

Millennium House Vacancies

We have a requirement for:

Two Evening Receptionists / General Assistants to support our bar staff as and when required on a zero-hour contract.

Casual bar staff required to help with functions and holidays, if you have experience and would like to apply, please contact MH 01579 363096.

We are looking for casual bar staff to help with functions and holidays, if you have experience and would like to apply, call MH 01579 363096.

PARISH DEFIBRILATORS

Please make yourselves familiar with the location of the two defibrillators, one at Millennium House main entrance, the other at the Village Hall St Ive. They may save the life of a neighbour, friend, or family member.



MILLENNIUM HOUSE PENSILVA



ST IVE VILLAGE HALL

TEN PLUS YEARS OF WILDLIFE WATCHING

IN THE PARISH OF ST. IVE

Since moving to the Parish at the end of 2009, I have been photographing and recording the wildlife I see at my home on the edge of Pensilva, on a daily basis. This month I thought I would talk about one of our winter visitors the ...

REDWING



Redwings migrate to the U.K. from Iceland, the Faroes, Russia and Scandinavia between October and November, arriving in flocks overnight.

People who have lived all their lives under redwing migration routes talk fondly of hearing their calls as they arrive. Sadly I am

not one who can do this, though you can find recordings on line. They stay until Spring, with only about 20 remaining to breed in this country, making them a red list species. It is thought that climate change is likely to wipe out this tiny breeding population. Unlike most migrating birds, redwings rarely return to the same place each year, so the birds you may have seen last year may not be the ones you see this year.

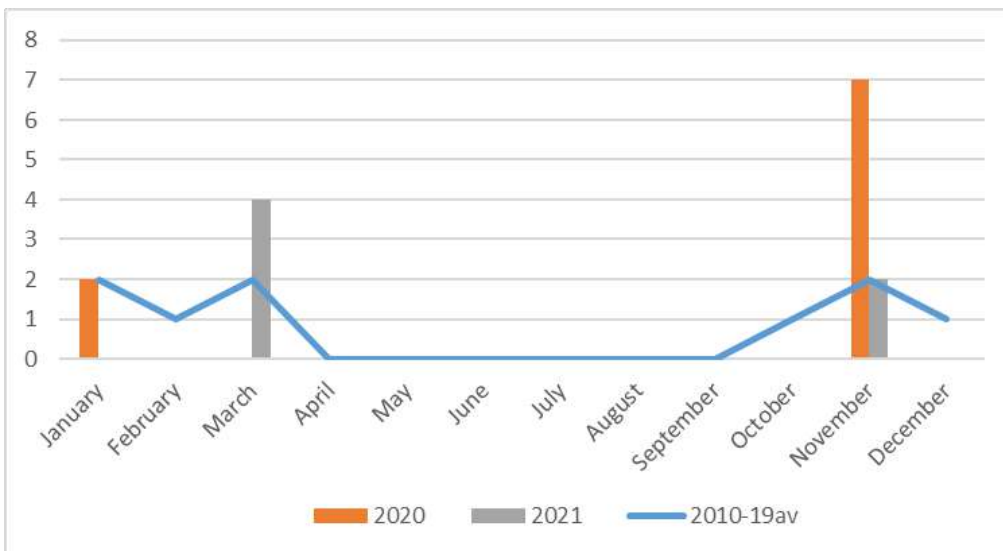


Chart showing my first 10 years' average monthly observations of redwings (the line), compared with the two most recent years (the columns).

While here, redwings spend most of their time in the fields and hedgerows, visiting gardens only when the weather is harsh or to access holly or hawthorn berries. The photo at the top is of one bathing in our pond, where we quite often see them. They also come onto our lawn and into the wood below us, where they can be seen turning leaves over, looking for worms and other invertebrates.



My best sightings tend to be in a hawthorn and a holly tree close to the house where they feast on berries. A group of them can clear a tree in a few days!



Redwings are our smallest member of the thrush family and get their name from the red patch under their wings (see the internet for a colour picture if you are reading the paper version of The Pump - or try the version on the Parish website). However, this red patch is not always easy to see, but if you spot a smallish thrush with a strong stripe above its eye, a redwing is almost certainly what you are looking at.

HAPPY WILDLIFE WATCHING!

HILARY

PENSILVA PRIMARY SCHOOL KS1 CHRISTMAS PRODUCTION

For the last few weeks, KS1 at Pensilva Primary School have been practising hard for their Christmas production 'Whoops-A-Daisy Angel'. On Wednesday 15th and Thursday 16th December they did their



performance in front of their families.

It was lovely to be able to invite parents and family members in for the first time in ages!

The children did a fantastic job of remembering their lines

and positions on stage and they all looked amazing in their costumes.

Thank you to all the children for putting on a great show and also to the parents and grandparents that took the time to make some really excellent costumes.

The KS1 teachers would like to thank all the TA's that also helped to bring the

production together from music to props and the task of getting all the children into their costumes!



Opening times for the Mel Bar at Millennium House

Thursdays 5 - 11 pm.

Fridays 5.30 - 11 pm.

Saturdays 5 - 1 pm.

Also Tuesdays 5 - 11pm but only when the Function Room is in use.

These times may change depending upon footfall.

Pensilva WI December Report

Early December is when one's mind turns to preparing for Christmas and what better way of starting off the festivities than a Christmas lunch and a party. Pensilva WI did just that with a wonderful lunch at Trethorne Leisure Park and then a few days later the Christmas party, where a very special visitor, Mother Christmas and two of her elves, distributed goody bags to members, containing items lovingly made by the Committee. We also had entertainment by Bob Wade who led us all in singing carols. A wonderful evening full of fun and laughter.



There was only one birthday this month and we all sang Happy Birthday to Pat Bates.

The next meeting will be at Millennium House on Wednesday 12th January 2022 at 7.15pm, when Dale Wood will be telling us all about the honeybee. The competition will be an item of cookery containing honey. All welcome.

TEARFUND BIG QUIZ

The wonderful sum of **£213** was raised this year, despite the lowest attendance to date! Possibly having to revert to Zoom at the last minute did not help. So, many thanks to those who came and those who gave. Please keep the date for next year, Tearfund seems to like the third Saturday in November. - Maxine Browne

St Ive & District Gardening Club

Our meeting on Dec 6th was on the subject of bees. The speaker was Tim Payne from City Bees. City Bees is a voluntary, non-profit organisation based in Plymouth, however, the bees are kept in many different locations.

As gardeners, we see bees in our gardens regularly and we know how fundamental they are to growing food. But, we found out that the life of a bee is not quiet, relaxing or simple. Bees have 6 legs, 5 eyes, 2 stomachs, 4 wings and no ears – they hear through their legs. They can count to 4 and they can recognise human faces.

Honeybees are wild and undomesticated. They are all girls and right from the day they hatch they work. Some of the tasks include feeding larvae, serving in the queen bee's court, fanning the nectar to aid in the production of honey, and carrying out cleaning and mortuary duties. So, they don't just visit pretty-looking flowers when it's hot and sunny!

Most people are familiar with 'elephants don't forget,' well, as we learnt, bees don't forget either! Bees sleep and, when they do, they 'unpack' their short term memories and 'place' them in their long term memory. This means that when a bee visits a particular flower or flowerbed, for example, it will remember its location day after day!

It was eye-opening to learn the amount of products made by bees and, also, the uses honey has for humans. Bees also make: wax, royal jelly, silk, scents, propolis & sting venom. Honey can be used for: wound dressing, ulcer treatment, drug resistant bacteria, anti fungal, immune system builder, and cancer and heart disease prevention.

Very sadly, bees are declining rapidly; they need wildflowers, hedgerows and less harmful chemicals. The weather and pests also threaten them.

As mentioned above, bees play an integral part in the growing of food for human consumption. The list of foods (& non-foods e.g. cotton) is so long it was easier for Tim to tell us which foods bees don't assist in growing.

As you can see the bee might be small but they have a big file of facts!

City Bees have a website, www.citybees.org.uk, if you'd like to see some more on them.

The January meeting is our Gardening Club Christmas Dinner.

Our next meeting is on Monday 7th February at 7:30pm in St Ive Village Hall with Seth Pascoe who will talk about sea buckthorn, its berries and health benefits.

Visitors are always welcome as are new members.

VICTORIA INN

The Cross, Pensilva. Tel: 01579 363933

Opening Hours

Mon & Tues: Closed
Wednesday: 5pm to 9pm
Friday: 5pm to 11pm
Saturday: 2pm to 11pm
Sunday: 12 noon to 6pm

Times may vary when we have functions / live music.

Meals on Wheels Service

Wednesday to Sunday (varied menu)

Please give us a call if this may be of interest to you
or if someone that you know may need our help.

Our full menu is also available for delivery or to eat in.

Wednesday Evening - Homemade Pie Night (varies weekly)

Also includes a dessert. **£9.95**

Please check our weekly 'Specials'

Thursday Evening - Curry Night (Eat in or Takeaway) **£6.00**

Friday & Saturday Evening - Fish, Chips & Peas Special

Small **£5.95**, Large **£7.95**. Add a dessert for **£1.00**

Sunday Carvery 12noon to 3pm **£9.50** (Collection, Delivery or Eat in)

Live Music

New Years Eve The Flying Sorcerers



Volunteer Days

Your chance to get involved with helping to look after your
Community woodland.

Sunday 9th January

Sunday 13th February

Sunday 13th March

11am – 3pm.

This is a fun and rewarding way to give a little back to a local community project at a time when caring for our environment has never been so important. This is a great opportunity to meet new people, learn new skills, spend time in the woods and have fun!

Come along and bring family and friends. Those that come along and help get the option to take a share of the timber (once we have put aside the few loads for sale to raise funds for the year's insurance.)

Accompanied children (and dogs on leads) very welcome! Bring hand tools and work gloves if you have them i.e. loppers, bill-hooks and bow saws. We will have a small supply available.

No experience necessary. Training given. Work to suit all abilities and ages.

Come and share some good company and wholesome, productive work

Please contact us if you would like to come along:

ST IVE METHODIST CHURCH

PLEASE COME ALONG AND SHARE WITH US IN OUR
CHRISTMAS MUSIC DISPLAY

ORGANISED FOR US BY MR JULIAN LANGSTON

SAT 8TH AND SUNDAY 9TH JANUARY

TIMES :-

SAT 8TH 10AM – 12 NOON & 2 – 4PM

SUNDAY 3 – 6PM

WE WILL END THE EVENT WITH A CAROL SERVICE

STARTING AT 6PM ON THE SUNDAY.

ALL WELCOME. FREE ENTRY,

FREEWILL DONATIONS FOR ST PETROC'S

AND CHURCH FUNDS



PoStIve Community Resilience Project

St Ive Community Garden

Our first Volunteering Day

for the garden will be on

Sat. 29th of Jan. between 10am and 3pm.



PoStIve + Resilient + Together

We'll be planting & preparing the Glebe Fields site behind St Ive Church.

There will be free hot drinks and cake and we'd love you to join us! No experience necessary. If you don't want to garden, just come and join us for a cuppa and to offer encouragement.

If you would like to come, or bake a cake, email posicrp@gmail.com or message us on Facebook <https://www.facebook.com/posicrp> or phone / text 07768 130520.

Parish of St Ive Community Resilience Project CIO

Pensilva Film Club


Many thanks to those of you who attended our latest movie – The Personal History of David Copperfield. A very “different” film to those previously shown, following the life of David growing up, often in not such happy circumstances. After the film, we heard that some in the audience were cold, so apologies for that. We thought to keep the hall ventilated due to the current Covid situation, but we certainly don’t want folk to be uncomfortable. Please don’t hesitate to speak to us during the film with any concerns – we could have closed the doors no problem. Please note that current government guidelines require masks to be worn at all times in cinemas (except when drinking or eating).

Covid restrictions allowing, we have our next movie on Friday 21st January. The film choice is “Edie” which I think will be enjoyed by our regular members. It stars Sheila Hancock who, as a somewhat “grumpy” Edie, decides that life is not over at the grand old age of 83 and is determined to climb a Scottish mountain she intended to visit with her father some 30 years earlier. Sheila Hancock is perfect for the role in this film which is both funny and moving.

If further Covid restrictions come into force in the meantime please check at Millennium House during the days preceding the movie. New membership available on the night for £6 (valid for 12 months) and £3 for members.

Wishing you all Happy New Year and hoping to see you on the January 21st.

In association with C-Fylm; Kernow Creative Arts.



Pensilva Film Club
Part of C-Fylm, Creative Kernow
Presents on Fri. 21st January 2022 at 7:30pm
A screening of
Edie
At Millennium House, Pensilva
See additional details above



Walk (or run) 26.2 miles this January and raise funds for Citizens Advice Cornwall

For details email

**Tamsin.chapman-gunner@citizensadvicecornwall.org.uk
or download a pack from our website**

Photo by Jeffrey Grospe on Unsplash

Charity Number 1096193

Citizens Advice Cornwall is issuing a challenge to the public to shed Christmas calories by walking or running the distance of a marathon over January while raising money to help their local community.

People can walk or run 26.2 miles over the month – bit by bit or in one go.

Last year Citizens Advice helped almost 9,000 people in Cornwall and the Isles of Scilly, writing-off debt worth a total of £1.8 million, and gaining income worth £5.3 million. In our latest survey, 96% of the people we helped in Cornwall said they had a positive or very positive experience with Citizens Advice.

Members of the public can sign-up for the January Challenge by visiting www.justgiving.com/citizensadvicecornwall and selecting the “fundraise” option, by emailing Tamsin.chapman-gunner@citizensadvicecornwall.org.uk or by downloading a pack from www.citizensadvicecornwall.org.uk



PoStIve Community Resilience Project

Repair Café - Skills needed, you can help!

A repair café is a community activity that brings together people who have items they need repaired, with people who have the skills to repair them. We just need a team of willing people with the right skills.

A repair café is a fun, social event that values the expertise of volunteer craftspeople and saves people money, while helping to reduce waste and consumption. We would like to set one up for our parish and we need your skills and enthusiasm. Don't be shy! You don't need to be an expert, you just need to know a bit more than the people who bring their stuff in.

Sewing, mending textiles, fixing gadgets, computers, bicycles, or anything else! If you enjoy helping out your friends and neighbours... Join us to do good and have fun in the process! Just a few hours, once a month.

Tool and knife sharpening, garden machinery / equipment repair, sewing, knitting, darning, woodwork, toys, jewellery, electronics, anything!

email posicrp@gmail.com or message us on Facebook [https://](https://www.facebook.com/posicrp)

www.facebook.com/posicrp or phone / text 07768 130520.

Parish of St Ive Community Resilience Project CIO



News from The Growing Project

The Growing Project is already very well-known to many in our parish, if nothing else from the many articles it has contributed to the Parish Pump over the years. For those who are not so familiar with it, it is a Community Interest Company, founded in 2011 by the late Ruth Wilson, where local volunteers grow and sell organic fruit and veg for the local community. At the same time it provides a safe space for the helpers to enjoy a beautiful, peaceful and healing environment. About three or four years ago, The Growing Project inherited the one-acre site in Pensilva where it is located, but while the facilities there for growing produce are first class, the facilities for the people involved are very basic. So, The Growing Project has launched a crowdfunding initiative to help to finance the provision of electricity, running water, and some toilets. To find out more go to <https://chuffed.org/project/the-growing-project-fundraiser>

Good glean fun

The Gleaning Network is a network of groups, organisations, farmers, charities and keen volunteers who are all working to reduce farm-level food waste - and now it's jumping into action also in SE Cornwall!
Our aim is to harvest unwanted and surplus vegetables from fields that are about to get ploughed-in, and distribute said veg to food banks and community kitchens where it is needed the most. Food banks are crying out for fresh produce, with many users suffering from malnutrition. We need volunteers on the ground, friendly farmers and transportation links to make this happen... And that is where you come in - come glean with us! We're not only looking in SE Cornwall, it's Cornwall-wide and now splurging into Devon. All volunteers, transporters, food hub spaces, and farmers from wherever you hail are most welcome, needed and appreciated. To connect with the SE Cornwall crew, please check out our Facebook page by searching "Gleaning Network SE Cornwall" and for more info on what is happening across the county visit <https://gleaningcornwall.org.uk>



Matt's Windows

Repair of Windows, Doors
& Glass Unit Replacement

T: 01579 641228

M: 07533 387368



TAPS RELAUNCH



Covid 19 has disrupted many groups and organisation. The Steering group has worked tirelessly to provide support to members through zoom meetings, newsletters and one to one telephone calls, but with regret this has not retained our members.

But, as they say, when one door closes another one opens, the fight against prostate cancer will go on through a different programme of awareness. Following the AGM meeting it was decided to promote the message by providing a presence at local shows and events, by giving talks to local organisations and groups. and through leaflets, posters and articles in local newsletters.

Can you help us defeat this cancer, if you are involved in running a local show or events and would like our presence or to give a talk to your group please let us know through one of the contact avenues below.

If you or someone close to you has just been diagnosed and would like to chat with someone who is already living well with prostate cancer diagnosis give us a call we are always willing to listen and give support where we can.

Website:<https://www.tamarareaprostatesupport.org>

Email:tapsinfo555@gmail.com

Paul Mansell 01822 832179 Harry Lawson 01579 383258

John Stewart 01822 833343 Stephen Williams 07735 380883

Supporting Guiding & Scouting Activities in Pensilva 200 CLUB Draw Results for November 2021

**1st No. 44
Mr R. Rendle**

**2nd No. 28
Mr S. Gilbert**

**3rd No. 167
Mrs D. Upton**

Thank you for your support

St John's Church Pensilva



St Petrocs

Working to end
homelessness
in Cornwall



Safe and happy
childhoods

Community Charity Lunch

£5.00

Thursday 6th January

12.00 to 1.30 pm

Bring and Buy Stall

St John's Church

Good Grief Cafe

There is no right or wrong way to grieve.

We aim to bring the bereaved community together, with time to share experiences and to bring comfort to one another in what can be an isolating and lonely time. There is no agenda, just free tea, cake, chat and friendship.

All are welcome, and please use this as an opportunity to invite someone.

Wednesday 19th January 3.00 to 5.00 pm

Contact Geoff on 01579 362698

Teatime Church



For pre-schoolers and their families

Sunday 9th January

3.45pm

St John's Church
Pensilva

Sharing a Bible Story

Playing Games

Singing and Praying Together

Eating Tea



Teatime Church will be held on the 2nd Sunday of each month
at St John's Church

For more information contact: Rev Becca Bell
Rev Li Selman

revbeccabell@gmail.com
revliselman@icloud.com

T. Tribute
K. Kids and
Y. Youth

The
Tribute
Cluster
of
Churches

Sunday
16th
January



Primary aged kids: 4.30 - 6.00 pm

Tea for all: 5.30 pm

Secondary aged youth: 5.30 - 7.30 pm

at

St Ive Parish Church

To book a place contact: revbeccabell@gmail.com



knit and natter

Do you enjoy stitching,
knitting, crocheting?

Join our friendly knit and natter group.
Come and meet new friends and swap tips
and ideas - all ages and abilities welcome!

Drop-in!

There is no charge
for this activity but there
is a Donation Box if you
would like to make a
cash contribution.

St John's Church
Pensilva
on the
last Tuesday
of the month
2.00
To
4.00 pm
Contact Kathleen
01579 363686

Tuesday
25th January

PENSILVA MEMORY CAFE

If you have memory problems or you are a carer for somebody who does, and would like to meet others who understand your situation, then join us at St John's Church



Thursday 27th January 2.00 to 4.00 pm

Contact Geoff on 01579 362698

ST JOHN'S CHURCH, PENSILVA

A united congregation of the Church of England & the Methodist Church

Services for January 2022

Sunday	2 nd	11.00 am	Revd Sue Hill	<i>Holy Communion</i>
Sunday	9 th	11.00 am	Café Church	Revd Li Selman
Sunday	16 th	11.00 am	Revd Martin Sellix	<i>Holy Communion</i>
Sunday	23 rd	10.00 am	Covenant Service at Liskeard Methodist Church	
		5.00 pm	Food for Thought	
Sunday	30 th	10.30 am	Tribute Cluster service at Menheniot Parish Church	

EVENTS

Thursday	6 th	10.00 - 11.30 am	Prayers for our community and nation Everyone is welcome
		12.00 - 1.30 pm	Charity Lunch (<i>St Petrocs & Action for Children</i>)
Sunday	9 th	3.45 - 5.00 pm	Tea Time Church for families
Wednesday	19 th	3.00 - 5.00 pm	Good Grief Café
Tuesday	25 th	2.00 - 4.00 pm	Knit & Natter
Thursday	27 th	2.00 - 4.00 pm	Memory Café

For further details of the services and events at St John's, or if you know of any illness or need in the village, please call Geoff, 362698 or Frances, 363718

St Ive Methodist Chapel

Services for January 2022

Sun 2nd Jan	3 pm	Rev Jonathan Budd
Sat 8th and Sun 9th Jan	10am to Noon & 2 to 4pm 3 to 6pm	Christmas Music Display, ending on Sunday at 6pm with a Carol Service
Sun 16th Jan	11:15am	United Service at St Ive Church
Sat 23rd Jan	3 pm	Keith Mutton
Sun 30th Jan	3pm	Rev Iris Bray. Covenant Service.

Millennium House Coffee Shop Opening Hours

**We are open Tuesdays, Wednesdays and Fridays, 9am to 1pm
(to coincide with Post Office days).**

**Our intention is to open more days and for more hours as
soon as Covid regulations allow.**

**Covid precautions are in place at all times, providing a safe
environment for our customers.**

All Being Well

**We are still open for three mornings a week. A maximum of six
members can now attend at one time.**

Opening hours:

Monday, Wednesday and Saturday, 9am to 1pm.

**Maximum six members at a time for each of three slots within
each session: 9:00 to 10:20, 10:20 to 11:40 and 11:40 to 13:00**

Prior booking is essential

**To book yourself in or for any enquiries, call in at the gym or telephone on
01579 363890, during the opening hours listed above.**

**22 years working in our local community to improve
health, fitness and well being.**

Badminton has restarted at Millennium House

Come and join our relaxed and friendly group.

Mon & Tue 7:30 - 9:30pm

For further info phone Nigel or Carol on 01579 363594 or 07885 798370

PENSILVA VILLAGE HALL

We are now open and back in business!

Anyone wishing to book the hall for meetings, birthday parties or fundraisers, please contact Peter or Jackie Browning on **01579 363212** or email **peterpensilva@gmail.com**



Please note that as well as hall rent there is a coin meter for

MOBILE LIBRARY

The County Mobile Library is back. It visits our area once a month on Fridays of "week 3" (not necessarily the 3rd Friday of the month).

Next visits: **Jan 14, Feb 11, Mar 11**

Stops at The Victoria Inn, Pensilva, 10.25-10.45am; Quethiock bus stop 11.00 to 11.20am.



Struggling with Sight Loss?

iSight Cornwall offers practical help to people living with sight loss in Cornwall including:

Low Vision: Advice for low vision aids

Assistive Technology: Advice on products

Benefits Advice: Assistance to claim entitlements

Equipment Demonstration: Advice on gadgets

Social Clubs & Activities: Links to clubs & activities in the county

For more details Telephone 01872 261110 or visit

www.isightcornwall.org.uk

MILLENNIUM HOUSE

COMMUNITY CENTRE, AND DYNAMIC EVENT
VENUE IN THE HEART OF EAST CORNWALL



Conferencing

We have four meeting rooms for all your corporate needs.



Function Room

For parties, discos, or just larger events; with adjoining kitchen and bar.

Our Facilities

Sports Hall

For sports or larger events requiring a stage, the sports hall is our biggest venue.



Coffee Shop

Providing tea, coffee and cake. And for something stronger, there's the Mel, a licensed bar.



Enquire today:
01579 363096

www.millenniumhouse.org.uk
PRINCESS ROAD, PENSILVA, PL14 5NF

What Do We Do?

From wedding to wakes, kids or adults, corporate or community, we can host and cater your event. If you have an idea that's not covered here, get in touch and see if we're the right venue for you.

We're also home to:

- ✓ The Mel bar
- ✓ All Being Well Fitness Centre
- ✓ Post Office
- ✓ Sunflower Park kids playground
- ✓ Extensive playing fields
- ✓ Community Library



Looe & South East Cornwall

Looe office number: 01503 770752, or mobile: 07443 277074
or email cornwallskills@wrecltd.co.uk

Traineeships: Age 16 – 24 - Maths & English Functional Skills, Digital Skills, 1:1 support, 70 hour work placement and more.

We pay £6pp per day travel costs, £5pp per day lunch costs and £35 per day childcare costs.

COMPASS: Age 16-24 - 1:1 tailored support with next steps. Build your CV or Upskill your qualifications. Get support with confidence, motivation or life skills.

Vocational courses: Age 16+ (no upper age limit)

Many of these courses can be delivered in locations across Cornwall:

CSCS Training

Introduction to Customer Service with Level 2 Food Safety & Catering

Introduction to Working with Children - Level 2 Safeguarding

Health & Safety in the Workplace Level 2

First Aid Level 3

***All of our programmes offer the unique opportunity to spend 2 weeks in Spain on a work placement with all costs covered**



Bargain Corner Free Ads up to £50

Ads are free for items up to £50. £5 charge for items over £50. Please ring the Parish Office on **01579 363096** or leave a note at Millennium House reception or email **parishpump@btconnect.com**.

*****Please let us know when your item has sold*****

Electronic, arm-type **Blood Pressure Monitor**, used once. Not suitable for those with a pacemaker. **£15**.
01579 362698.

Ladies Superdry Jacket. Size Med. Good condition. **£15**. **01579 346982**.

Gazaco **Child's Car Booster Seat** used once only. Brand new car seat protector for above. **£30**.

Exercise bike with program booklet **£50**.
Bayliss automatic greenhouse window opener. Brand new, never used. **£15**.
01579 362688

Petrol lawn mower, approx 19 ins, in working order. **£30**
Crockpot slow cooker, hardly used, excellent condition. **£10**
01579 363573

Long handled garden fork in VGC. Ideal to prevent back strain when digging or removing shrubs. **£15**. Collection Only,
2 electric drills in working order with chuck keys **£15** for the two.
Brand New **Vinyl Flooring** for kitchens, bathrooms or hallways 13ft long x 2ft 11 inches wide. Colour light to mid grey. **£25**.
Early 19C / late 18C **cast iron fireplace faceplate** in GC, 36" high x 24" wide. Ideal as a fire faceplate or ornament. **£35**..
Six coils of industrial steel cable now surplus to requirements **£35** the lot.
01579 384658 (Safe Distancing if reqd.)

2 short legged wetsuits. 1 x 38" chest and 1 x 42" chest. Used once. As new. **£20 each**. **01579 362128**.

Canon IP2700 **Printer**. **£20**
Computer screen 19" **£20**.
Epson Perfection v350 **Scanner** Photo **£20**
Sony Revia 42" **TV**. **£45**.
All in working order. **01579 363200**

Set of 3 **suitcases**, red, vgc, Antler, **£40** ono. **07770 747353**. Pensilva area

Set of **Snow chains**, new and unused fit 14" to 19" rims, self adjusting. **£40**
Pensilva **01579 362207**

Please let us know when your item has sold

ADVERTISING SECTION

TO OUR ADVERTISERS: Firstly, thank you for advertising in the St Ive Parish Pump. Your support enables us to provide a much-valued monthly newsletter to our parishioners, while also giving businesses in our area affordable access to a sizeable local market of grateful consumers.

New advertisers will be asked to pay in advance and their advertisements will not be included until the edition following the 15th day of the month in which payment is received. Advertisers who are behind with their payments will have their adverts removed from subsequent editions until payments are brought up to date. To make it easier for you, we are adding a facility to pay by card over the phone.

Advertising prices:	Net of VAT		Including VAT	
	1 month	12 months	1 month	12 months
Quarter Page:	£ 8.33	£83.33	£10.00	£100.00
Half Page:	£ 16.67	£167.67	£20.00	£200.00
Full Page:	£ 27.50	£275.00	£33.00	£330.00

Thank you, once again, for advertising in our newsletter. We hope that you will continue to do so, and we wish you every success with your business.

Debbie Hicks - Counselling and Psychotherapy

Caring, confidential counselling for all.

I work in a therapeutic relationship to help you understand yourself better.

I offer a warm, approachable, relaxed environment for you to untangle your thoughts and emotions.

More info on my website or by contacting me.

www.debbiehickscounselling.co.uk

Email:debbiehicks10@gmail.com

07851 133782



TRADITIONAL STONE SERVICES

CLASSIC & TIMELESS STONE MASONRY AND LETTERING

MEMORIAL CLEANING

COMMISSIONS TAKEN

01579 363693 OR 07507 782282

Find us online:
fresh_prop.co.uk



**Top quality carpet, upholstery & hard floor
cleaning services based in Callington**
Long-established cleaning professional
Domestic & commercial
NCCA qualified & member
Steam cleaning & dry carpet cleaning
Tile & grout + natural stone clean & seal
Vinyl & LVT including Amtico & Karndean
Call 0800 3893393 or 07905 188459
Or email nevil_fresh@msn.com



FOR ALL YOUR CELEBRATION NEEDS

Visit our shop: 12 Fore Street, Callington

Call us on 01579 384386

Find us on Facebook or visit our website:

www.victoriaeyton.co.uk

- Helium Balloons - Balloon Arches -
- Bespoke Balloon Designs -
- Personalised Balloons - Partyware -
- Huge selection of greetings cards -
- **Weddings, Parties and Corporate events catered for.**



Domestic Electrical
Property Maintenance
Interior & Exterior Work
Carpentry :: Decking
Kitchens :: Bathrooms
Wall & Floor Tiling
General Plumbing

MCCARTHY PROPERTY MAINTENANCE

Electrical Safety Register
incorporating
ELECSA   ECA
Certification Ltd

HIGHLY REGARDED LOCAL BUILDER
COMPETITIVELY PRICED
COVERING THE SOUTH WEST

Contact Dominic

07968 599 675

01579 362 945

info@mccarthypropertymaintenance.co.uk

www.mccarthypropertymaintenance.co.uk



Maintaining and preserving our
countryside for the benefit of all

Dry Stone Walls

Cobblestoning

Stone faced walls

Hedgelaying/steeping

Land management

All aspects of Landscaping

Mobile: 07539 296799 or

Email: info@just-in-stone.co.uk



JJ MOSS

THE MILKMAN ON YOUR DOORSTEP

01579 349093 - 07882 618488

JJMOSSMILK@GMAIL.COM

WE ARE A FAMILY RUN BUSINESS BASED OUT OF LISKEARD.

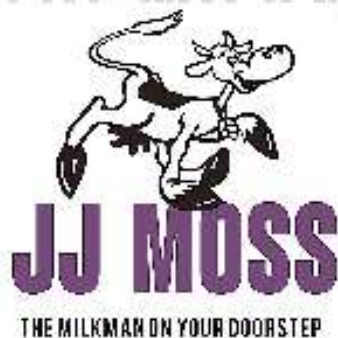
FRESH FRUIT & VEG, BUTCHER MEATS & POULTRY, FRESH FISH, BAKERY GOODS, FREE RANGE EGGS, ALL DAIRY GOODS, PRESERVES & JAMS, HOUSEHOLD ITEMS, NEWSPAPERS & MAGAZINES.

ALL WITH NO DELIVERY CHARGE.

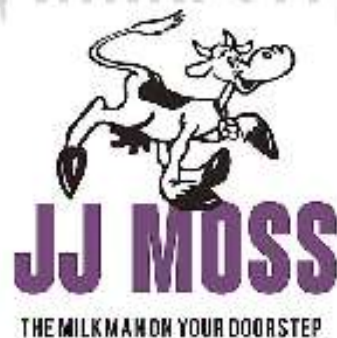
WE CURRENTLY DELIVER IN YOUR AREA ON MONDAY / WEDNESDAY / FRIDAY.

PLEASE FEEL FREE TO PHONE / EMAIL WITH YOUR ORDER / ENQUIRY.

THANK YOU FOR YOUR SUPPORT!



JJ & EVE



Westwood Garden Maintenance



Antony Watts

Grass Cutting, Clearance

Weeding, Turfing

Hedge Cutting

Patio Cleaning, Planting

Regular Visits / One-off Contracts

Residential & Commercial

FREE ESTIMATES

01579 362019 www.westwoodgm.co.uk 07952 094472

JPH Plastering and Rendering

Internal plastering

Internal and external rendering

Internal/external painting & decorating

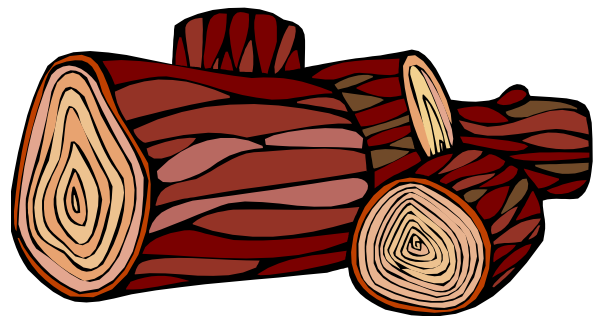
Property maintenance

Landscaping and land management

For estimates and no obligation quotes
contact Justin on:

07539 296799 or
info@just-in-stone.co.uk

SEASONED LOGS



MIXED LOAD

or

HARDWOOD

Tel. Jonathan

Mobile **07966 070725**

or

01579 363157

PENROSS

Rosecraddoc Lodge Holiday Bungalows
(Between Pensilva & Liskeard)

Ideal for family & friends coming to visit!



Refurbished in 2018. Sleeps 4. Electric, heating, bedding & towels inc in rent. Patio. Free wi-fi. Follow us on Facebook.

Sorry no pets or smoking.

Contact Julie Tucker on 01579 362221 or

email penhargetfarm@gmail.com

for 15% discount

NICOLA GREENE

BSc (hons) Podiatry MChs

HPC Registered Chiropodist/Podiatrist

Home Visit Practice treating all your foot care needs:

- Nail Cutting
- Corns and Calluses
- Thickened Nails
- Dry Cracked Skin
- Verrucae
- Foot Pain
- Diabetic Foot Assessments
- Wound Care

T: 01579 590027

M: 07786164205

E: nicki_greene@yahoo.com

ADVERTISE HERE!

This box for **just £20 per month** incl. VAT (£16.67 Net)

2 MONTHS FREE for a 12 month order.

i.e. **£16.67 per month** incl VAT for 12 months (£13.89 net)

See the full tariff on page 3

One thousand copies per month distributed free of

charge to households in the Parish of St Ive.

Debbie's Care Services
Tel. 0777 948 3230

Hello, my name is Debbie. I am a local lady who has been working in the community for over 30 years.

I provide the following services and more!

- Assisting bathing / showering
- Preparation of meals
- Cleaning / Shopping / Ironing
- Companionship / Friendship and emotional support
- Assisting with mobility
- Day, Evening and Night Care

MUST STEP
PODIATRY
HCPC Registered
podiatrist

Fully insured
NHS experience
Kind and caring

Home visits

All your footcare needs

Most areas covered

Tel: 07522 577012 or
07561 608296

DO YOU NEED A HELPING HAND?

Reliable, friendly,
experienced, mature
local resident offering
the following services:

Cleaning Ironing

Shopping Light Gardening Dog Walking

CRB/DBS checked and fully insured. Competitive rates.

Contact Jess: Telephone or text: 07934 764 327.

Email: homeangel77@yahoo.com. Find us on Facebook





KV Accounting Solutions

ACCA

Local Accountant offering fixed fee accounting services

With over 20 years experience, I am a fully qualified, friendly, local accountant

- | | |
|---|--|
| ✓ Annual Accounts for Sole Traders and Partnerships | ✓ Self Assessment tax returns |
| ✓ Book Keeping & Payroll | ✓ iXBRL tax filing |
| ✓ Personal Tax Planning | ✓ Tax investigation Fees Insurance |
| ✓ Company Accounts | ✓ Company Secretarial work |
| ✓ Business Support & Advice | ✓ Tax calculations for Sole Traders and Partnerships |

Kate Vaughnley FCCA - Chartered Certified Accountant
Website : www.kvaccountingsolutions.co.uk or Email : katevaughnley@gmail.com
Telephone : 01579 364083



Gas Services
NATURAL GAS - LPG - OIL
BOILER INSTALLATION
BOILER SERVICE & REPAIR
LONG WARRANTY FREE QUOTES
07859848288
bagasservices@outlook.com





Affordable Counselling

Caring, confidential,
non-judgemental

- Increased confidence and self esteem
- Help to cope better at difficult times
- Improved relationships
- Clarify confused thoughts & feelings
- Assertiveness
- Personal insight
- Improved emotional health
- Available for youth and adults

Isabelle McGarahan BA, PGCE
Dip in Therapeutic Counselling,
Accredited ACC, DBS cleared
www.im-counselling.org email:
isabelle@im-counselling.org
01579 344090/07857326229



P BRADLEY PLUMBING & HEATING

Email: info@pbplumbingheating.co.uk

Web: www.pbplumbingheating.co.uk

Facebook: @PBradleyPlumbingandHeating

NO JOB TOO BIG OR SMALL

24hr Emergency Call Out

Based in Liskeard

Call Today 07598956760

***"The complete bathroom
installation service"***

**New bathrooms fitted,
floor and wall tiling specialist**

General Plumbing including:

- Bathroom makeovers
- Dripping taps and burst pipes
- Pump and cylinder changes
- Radiator upgrades and additions
- Specialist in Leadwork
- No job too small
- No Call out charge



Friendly Service, Quality Work

NO VAT

**City and Guilds Qualified
established 1983**

Call William Hale on

Tel: 01579 362132 Mobile: 07826 699719



Kiln Dried Firewood
Kindling & Firelighters
Eco Heatlogs
LPG Bottled Gas
Patio, BBQ & Camping Gas
Coal & Smokeless Fuel



0800 8021 223
sales@loganslogs.co.uk
www.loganslogs.co.uk

Heel 2 Toe Footcare

Tired Aching feet.

Corns, Hard skin, Verruca.

Fungal infected toe nails, or
toe nails require cutting.

Diabetic feet also treated and
regularly checked.

I can help to keep your feet
looking and feeling good.

I am a trained Foot Health
Practitioner to Diploma Level, fully
insured & DBS checked.

I can do home visits via an
appointment.

Call Penny: **07746 926146** for
further information. **Please note
new number May 2021.**

MARK FITCH CHIMNEY SWEEP

- * BRUSH & VACUUM
- * CLEAN, RELIABLE SERVICE
- * COVERING ALL S.E. CORNWALL
- * DISCOUNT FOR MULTIPLE CHIMNEYS
- * COWLS & GUARDS FITTED
- * STOVES SERVICED



*Call
Mark on:*

01579 350762
07773 462643



QUALIFIED RAYNOR MASSAGE THERAPIST

RELAXING AND THERAPEUTIC MASSAGE TREATMENTS

Effective for many different types of chronic pain, sports injury, stress and tension related problems



CBD massage now available

APPOINTMENTS AVAILABLE AT

LISKEARD THERAPY CENTRE
LISKEARD PL14 3JB

THE WELLBEING CENTRE
LISKEARD PL14 6AT

Contact : Tina North

Phone : 07720 832322



Website : massage-therapy-cornwall.co.uk



R J Gardening & Handyman Services

All aspects of gardening and handyman work undertaken.

- ~Local and Trustworthy
- ~Hard Working
- ~Reliable and Experienced
- ~No job too small
- ~Competitive rates

Contact Raymond on:

07541 229064 or 01579 347622

raymond_pearcegb@yahoo.com

Find us on Facebook.



Fencing
 Paths & Steps
 Turf & Astro turf
 Driveways
 Retaining walls
 Digger work
 Footings & foundations

Patios
 Rendering
 Decking

And more

Free no obligation quotes

Call Rob on:

**07518246666 or
 01579 641802**

Window Cleaner
Window Cleaner

Also any upvc cleaned

i.e. fascias, gutters, etc.

gutters cleared & unblocked

Please phone Rob

07709 053464

Window Cleaner
Window Cleaner

Save Costly Energy!



SOLARTEC Windows & Conservatories Ltd

**'A' Rated WINDOWS & DOORS
 at BEST PRICES EVER!**



Professionally fitted and finished by us with a
 10 year ins. guarantee.
 In all colours



NEW

**FACTORY SHOP
 SUPPLY ONLY**

For all your windows, doors, conservatories,
 fascia, trims, guttering and sealants

**7-10 DAY TURN AROUND ON WINDOWS,
 DOORS and CONSERVATORIES**

TEL: 01579 343425

FAX: 01579 344500

WEBSITE: www.solartecwindows.co.uk

EMAIL: sales@solartecwindows.co.uk

KEEPING JOBS IN CORNWALL

PJR Garden Services

Phil Rule

All aspects of garden work - grass / hedge cutting, patios, fencing etc.

Mobile 07387 449004



Group Travel

Day Trips & Coach Holidays

Enterprise Park, Midway Road, Bodmin, Cornwall PL31 2FQ

Coach Excursions & Tours 2022

12th March 2022	Crufts, The Worlds Greatest Dog Show
24th - 29th April 2022	Chester, Liverpool & the Beatles
30th April 2022	Tobys Garden Festival, Powderham
6th May 2022	Steam Train & Kents Cavern
19th May 2022	Cruise the English Riviera
8th - 9th July 2022	Hampton Court & Kew Gardens
17th - 21st Sept 2022	Llandudno, North Wales



Visit our website for all our excursions & tours and download a PDF version of our 2022 brochure.

Call: 01208 77989
for bookings and brochure

website: grouptravelcoachhire.co.uk
email: grouptravelcornwall@btconnect.com
facebook: [facebook.com/grouptravelcwl](https://www.facebook.com/grouptravelcwl)

Bodmin MOT Centre

01208 77989

Garage Services
 MOT Testing Station
 Classes 4, 5 & 7
 Servicing & Repairs
 High Vehicles & Motorhomes
 Brake Test & Headlight Alignment
 Pre MOT Inspections
 Annual & Interim Vehicle Servicing
 ~
 Commercial interim inspections available
 including brakes and lights
 ~
 Helping you stay compliant

Bodmin MOT Centre at Group Travel
Enterprise Park, Midway Road,
Bodmin, Cornwall PL31 2FQ

Martin Hoare – Local, Reliable, Competitive



WHEEL DIGGER FOR HIRE
ALSO AVAILABE 'BREAKER'
AND NEW CONCRETE
'CRUSHER BUCKET'

ALL AT COMPETITIVE RATES

GROUND WORKS
DRAINAGE
NEW DRIVEWAYS
SEPTIC TANKS &
'SOAK AWAYS' INSTALLED



LASER LEVEL FOR HIRE
QUOTES AVAILABLE



Phone 01579 363517

or

Mob 07863 291213



INDEPENDENT FAMILY FUNERAL DIRECTORS

Supporting families to arrange funerals with sensitivity, dignity and care.

- Flexible, caring approach, tailor-making funerals to suit your needs and budget.
- Open and transparent, affordable pricing.
- Free bereavement support sessions, open to all in our community, first Wednesday of the month, 10am - 12pm.
- Prepayment Funeral Plans available

For details of our services and prices, visit our website.



01579 362358 | www.fdhallfunerals.co.uk



Avalennek, Caradon Town,
Upton Cross, Liskeard
Cornwall PL14 5AR
Telephone 01579 363598
Mobile 07901 538132
chrisrounsevell@tiscali.co.uk

HOG ROAST EQUIPMENT HIRE AND MEAT SUPPLY

Hog Roasts For Those Special Occasions
Self Catering or Hassle Free Service
Everything done to your special requirements

CHRIS ROUNSEVELL
TRADITIONAL BUTCHER

Come and visit our recently updated
Tile & Bathroom showroom in PENSILVA

We offer a generous discount to all Pump Readers

Unit 24 Pensilva Ind Est, St Ive Road, Cornwall PL14 5RE 01579 362264



CORNWALL TILE
CENTRE

Pensilva Showroom

Open Mon - Fri 8.30am - 5pm
Saturday 9.00am - 1pm

Tiles & Mosaics for:

Bathrooms & Kitchens Living Areas Conservatories
Patios & External Areas Wet Rooms & Spas Swimming Pools
& All Commercial Applications

 atlas concorde

www.cornwalltile.com

OPEN FOR RETAIL, TRADE & COMMERCIAL ENQUIRIES



THE HOME OF WOOD

BULK DISCOUNTS AVAILABLE ON OUR 30 YEAR SERVICE LIFE POSTS



OUR GOLD TREATED STAKES AND POSTS ARE THE ONLY ONES AVAILABLE IN THE UK THAT ARE APPROVED BY THE WPA BENCHMARK FOR 30 YEAR SERVICE LIFE

For more information please contact one of our team



Bond Timber, Bake Sawmill, Trerulefoot, Saltash, Cornwall,

PL12 5BW

01503 240 308 stacy@whbond.co.uk

Pensilva Stores

Amazing Value

Premier
a great deal more from your local store
Mon-Sat. 7:00 AM. - 9:30 PM.
Sunday 8.00 AM. - 9:30 PM.

- ✓ Fantastic Special Offers every month!!! (See store leaflets)
- ✓ Come and Check out our great deals on Wine, Beer and Spirits
- ✓ Local Produce: Homemade Butter and Clotted Cream, Meat from our local butcher
- ✓ Cornish Fresh Fruit and Vegetables
- ✓ Fresh Bread, Pasties and Cakes
- ✓ Take Away Coffee, tea and hot chocolate
- ✓ Newspapers and Magazines, Greeting Cards
- ✓ Paypoint, Lottery

* **Free to use ATM** *
* **Card Payment** *

Friendly Staff + Service with a Smile !!!

Pensilva Stores is a family run business who have been serving local people and visitors for more than 21 years.

Higher Road, Pensilva, Liskeard, Cornwall PL14 5NQ

Tel: 01579 362547

MENDOLOGY

Garage Door Specialist

- Repairs
- Servicing
- Installations


Out of hours service
call Dave anytime 07974 442645

MENDOLOGY COMMERCIAL DOORS LTD
www.mendologydoors.co.uk

01579 363760

PensilvaCars

01579 363516

- ✓ MOTs Class 4
- ✓ Service
- ✓ Repair
- ✓ Tyres
- ✓ FREE Courtesy Car
- ✓ Car & Van Sales
- ✓ Diagnostics
- ✓ Air Conditioning
- ✓ 

We have offered a supply, fit & balance of tyre service for 10 years at competitive prices.

Most of our tyres can be supplied the same day.

LOCAL RECOVERY £45.00

www.pensilvacars.co.uk

pensilvacars@hotmail.co.uk

We can service and repair your car to manufacturer specification, keeping your dealer warranty without main dealer expense.





KEITH RICHARDS

Motor Body Repair Specialists

A family run business with fully equipped & maintained workshops & a focus on
Customer Care

- ◇ Motor Body Repair Specialist
- ◇ Mechanical Repairs
- ◇ Servicing to All Makes & Models
- ◇ Computer 4 Wheel Alignment
- ◇ 24 Hour Recovery Service
- ◇ Renovations & Re-sprays
- ◇ Member of RMI (Retail Motor Industry Federation)
- ◇ Latest Diagnostics (including specialists for VW, Audi, Seat,
Skoda & Vauxhall)

With over 30 years' experience we aim to provide you with:- Value for Money -
Friendly Service - Professional Approach - Expert Advice that you Can Trust
(Visit our website for more details)

Pensilva Industrial Estate, St Ive Road, Pensilva, Liskeard, Cornwall PL14 5RE

Tel: 01579 362593

Email: keith@keithrichardsmotorbody.co.uk

Fax: 01579 363194

Website: www.keithrichardsmotorbody.co.uk

Wm. Newham & Sons ^{Est. 1835}

Proprietor Robbie Savill AWCB

**CHIMNEY SWEEPS
& BLACKSMITHS**



CHIMNEY SWEEPING

BIRD GUARDS, COWLS & POTS FITTED

CCTV INSPECTIONS & SURVEYS

STACK REPAIRS & REBUILDS

RIGID STEEL SYSTEMS ERECTED

STAINLESS STEEL and PUMPED CONCRETE
CHIMNEY LINING

STOVES SUPPLIED, INSTALLED & REPAIRED

FIREPLACE ALTERATIONS & RENOVATIONS

FULL RANGE OF FIREPLACE FURNITURE
made to order

01579 347777

need somewhere to stay ?
between homes ?
family/friends visiting ?

Cutkive Wood

Holiday Lodges

ideal for Pensilva
& St.Ive

please call Jackie on
01579 362216

J. J. Child

Plumbing and heating engineer.

Oil appliance service, repair and breakdowns.

Over 30 years experience

Call John: 01579 362336 or 07837 921086





Pensilva & St Ive Post Office Service

Pensilva: Through the Café on the 1st floor of Millennium House

Tuesdays: 9am to 1pm.

Wednesdays: 9am to 12 noon.

Fridays: 9am to 12 noon

.....

**The Millennium House
coffee shop is also open on
these mornings.**

St Ive: At St Ive Village Hall

Wednesdays: 10:30 to 11:30am

**Coincides with the St Ive
Village Hall Coffee Morning**

Saint Ive Parish tree-planting survey

Please let us know about any trees that you plant within the Parish. We will include them in our own survey and we will notify the Forest for Cornwall on your behalf, if appropriate.

email posicrp@gmail.com or message us on Facebook

www.facebook.com/posicrp or phone 01579 364016.

Pictures very welcome.

