

# THE PARISH PUMP



December 2021  
Edition 481



## The Newsletter for the Parish of St Ives



Happy Christmas to everybody. Here are some winter bird scenes to remind us of the wonders of nature.

See them in colour in the online version here: [st-ive-parishcouncil.gov.uk/parish-pump/](http://st-ive-parishcouncil.gov.uk/parish-pump/)

Sincere thanks to Harry Rule-Hodson for supplying these beautiful pictures of his, on demand, and at very short notice!

## Disclaimer

The articles appearing in this magazine do not necessarily reflect the views of the Parish Council nor of the Parish Pump Editor.

## Parish Councillors Telephone List

Alan Moss (chair)	01579 362064	Ivor Vaughan (vice-chair)	07979 934604
James Bruce	07411 192645	Marlene Carr	01579 362919
Martin Corney	01579 382450	Sandra Doe	01579 363096
Rosemary Farley	01579 384810	Nigel Gisby	01579 363096
Ron Greenhough	01579 363096	Tony Hodson	07973 536964
Nigel Libby	07968 891814	Paul Mann	01579 363757
Craig Vaughnley	01579 364083		

## Meetings of St Ive Parish Council

**Meetings are now being held when possible. Please see the Parish Council website for meeting dates, agendas and minutes.**

**<http://st-ive-parishcouncil.gov.uk/minutes-agendas/>**



**Devon & Cornwall Police**  
Building safer communities together

 **101**

Minicom 18001 101

## Police Community Neighbourhood Office

Your Community Support Officer is PCSO Steve Edser 30173.

email: CIOsnbmliskeard@devonandcornwall.pnn.police.uk

To report a crime call 101 or go to [www.devon-cornwall.police.uk](http://www.devon-cornwall.police.uk)

In an emergency call 999

## Contact details for St. Ive Parish Council and for Millennium House

Address for correspondence: Millennium House, Century Square, Pensilva PL14 5NF

General Parish matters should be raised initially with the Parish Clerk, Jenny Hoskin, who will present them to the Parish Council.

Telephone: 01579 363096, email: stiveparish@btconnect.com

For accounts matters for the Parish and for Millennium House contact John Body, Finance Officer: 01579 362102, email: millenniumhouseadmin@btconnect.com

Millennium House enquiries and reservations: 01579 363096

email: millenniumhouse@btconnect.com.

On the web: Millennium House Website: [www.cornwallvenue.com](http://www.cornwallvenue.com)

Parish website: [st-ive-parishcouncil.gov.uk](http://st-ive-parishcouncil.gov.uk) Facebook: [facebook.com/stiveparishcouncil](https://facebook.com/stiveparishcouncil)

### **PARISH PUMP ADVERTISING COSTS - NOTICE OF INCREASE.**

The prices for advertising in the Parish Pump will be increasing with effect from the January 2022 edition, the first increase since December 2012.

Orders placed before December 1, 2021 will be charged at the old prices.

**Advertisers - please read the notice on page 29.**

The new prices (including VAT at 20%) will be as follows:

**Quarter page: £10:00 per month or £100:00 for 12 months.**

**Half Page: £20:00 per month or £200:00 for 12 months.**

**Full Page: £33:00 per month or £330:00 for 12 months.**

### **Parish Pump Information and Contact Details**

To contact the editor please email: [parishpump@btconnect.com](mailto:parishpump@btconnect.com)

or phone the Parish office: **01579 363096.**

Hardcopy submissions by post or by hand to the Parish office, Millennium House.

Softcopy submissions: By email to the editor in MS Word, MS Publisher, pdf, Tiff or jpeg. Please use A4 pages and minimum 16 point font as the Pump is initially produced in A4 size and reduced to an A5 booklet at the printing stage. If in doubt please contact the editor.

**Current Advertising Prices including VAT at 20%**

Per issue:      Quarter Page £7.50      Half Page £15.00      Full Page £25.00

10% discount for 12 months paid in advance.

Bargain Corner free ads by email to the editor or drop off at the Parish Office.

**Deadline for the Parish Pump is STRICTLY 15th of every month**

## From the Editor

I suppose by now just about everybody knows what is the fifteenth letter of the Greek alphabet. If we didn't know before (I didn't) then we do now. It's Omicron, and it is, as I'm sure you've heard, the latest Coronavirus variant. My reaction to the news (once I had looked up 'Omicron') was: "Are we really up to fifteen already?" The last one I had heard of was the Delta variant, and Delta is just the fourth Greek letter! It makes you realise how much work must be going on behind the scenes in the world of virology. It must be almost as difficult as trying to keep up with Government advice on what to do and what not to do in a pandemic! I am writing this immediately before sending this edition off to the printers. It should have gone yesterday but there were a lot of last minute changes. If I had sent it yesterday, my attempted explanation of the latest guidance (page 6) would have been wrong, because yesterday evening there was an announcement! As it is, I have made some hasty changes, but it wouldn't surprise me if it was all out of date by the time you read this. I'm not even going to think about what the rules are if you need to travel to another country, or even to another part of our own country!

Keep well, everyone, we will get through this, and happy Christmas. Joe

St Ive Village Hall		
Gardening Club	1st Monday monthly 7:30pm	01579 382762
St Ive Snooker Club	Monday & Thursday 7:00pm	01579 382315 R Bunkum
Yoga	Tues 4:30-6.00 & 7:00-8:30pm	07947 785554
Post Office	Wednesday 10:30 - 11:30 am	
Coffee Morning	Wednesday 10:30 - 12:00	
<b>St Ive Village Hall is available for hire, £3.50 per hour.</b> Includes the use of the kitchen & electric (excluding wall heaters, which are on a £1 coin meter) <b>Contact Sue Sedgwick on 01579 383291</b> Hall meetings are now held quarterly on the third Monday of the month in January, April (includes the AGM at 7pm) July and October at 7.30.		

## **CHAIRMAN'S REPORT - DECEMBER 2021**

As I reported last month, the Electric Vehicle has been relocated by AGEUK. We have however, identified a need to transfer those in the community, with no transport, or with mobility issues, to and from hospital, doctors, vaccination or other appointments. So, we are going to continue to provide this service with the support of our brilliant volunteer drivers whilst sourcing grant funding for our own EV. We could still benefit from some more volunteer drivers. If you require an appointment or would like to offer your services as a volunteer driver, please contact Millennium House on 01579 363096.

On Saturday 11th December we would like some Volunteers to come along and help clean the items in the Playpark, refreshments will be provided. See notice later in the Pump.

By the time this issue of the pump goes to out, the Function Room flooring will have been replaced with a hardwood floor incorporating two skittle alleys. This will make a significant difference to the facilities of Millennium House.

A number of benches have been repaired or refurbished in the Parish, and the cemetery gates repainted, this should give them a new lease of life.

Finally, the Parish Council would like to wish all in the Parish a very merry Christmas and a happy New Year.

Alan Moss

### **Opening times for the Mel Bar at Millennium House**

Thursdays            5 - 11 pm.

Fridays                5.30 - 11 pm.

Saturdays            5 - 1 pm.

Also Tuesdays        5 - 11pm but only when the Function Room is in use.

These times may change depending upon footfall.

## From the editor: Covid19 - Lateral Flow testing and other precautions.

The guidance in England for Lateral Flow Testing etc. was updated late in November, but you could be excused for missing it as the Government messaging has been confusing and, so far, not much has been done to spread the word.

In certain environments, such as schools and workplaces, the organisations concerned should be giving you guidance on what to do. For the rest of us, the guidance on testing is now as follows:

### **When to take a rapid lateral flow test.**

In England, you should take a rapid lateral flow test:

- if you will be in a high risk situation that day.
- before you visit people who are at higher risk of severe illness if they get COVID-19

‘High risk situations’ include:

Crowded and enclosed spaces

And spaces where there is limited fresh air

You can find this advice on this web page, where you can order lateral flow tests:

<https://www.gov.uk/order-coronavirus-rapid-lateral-flow-tests>

**Lateral Flow Test kits are available online, or from any pharmacy, free of charge, and are easy and quick to perform.**

There are other situations where it makes sense to take a test. For example, take a lateral flow test if you have what feel like general winter cold symptoms, because cold symptoms are very like mild Covid symptoms, such as might be experienced by somebody who is fully vaccinated but infected. In this case, it is sensible to make sure that you are not spreading the infection to others who might not be so lucky with the symptoms.

If you have more severe symptoms, that more clearly suggest that you have Covid, you must isolate and take a PCR test. You can only leave the house to collect your test or to visit a PCR testing centre.

STOP PRESS. The guidance the guidance for wearing face coverings has just changed from SHOULD wear face coverings on public transport and in shops, to MUST wear them. This is to try and slow down the current rise in infection numbers. And we should all, out of good manners, follow whatever instructions are issued by those in charge at any place we might visit. If you don't like the instructions, don't visit.

## Millennium House Vacancies

We have a requirement for:

**Two Evening Receptionists / General Assistants** to support our bar staff as and when required on a zero-hour contract.

**Casual bar staff** required to help with functions and holidays, if you have experience and would like to apply, please contact MH 01579 363096.

### Mel Bar Christmas opening times.

Christmas Eve                      5 pm - 11 pm

Christmas Day                    12 noon - 3 pm

New Year's Eve                   5 pm - 1 am

### Millennium House Christmas Opening Times

Millennium House closes on the 24<sup>th</sup> December 2021 and re-opens on the 3<sup>rd</sup> January 2022.

We are looking for casual bar staff to help with functions and holidays, if you have experience and would like to apply, call MH 01579 363096.

## **PARISH DEFIBRILATORS**

Please make yourselves familiar with the location of the two defibrillators, one at Millennium House main entrance, the other at the Village Hall St Ive. They may save the life of a neighbour, friend, or family member.



MILLENNIUM HOUSE PENSILVA



ST IVE VILLAGE HALL

A reminder that this is the season for cutting back hedges that overhang pavements or highways. It is the responsibility of the owner or occupier of the land the hedges are on to carry out the necessary work. **St. Ive Parish Council.**

## TEN PLUS YEARS OF WILDLIFE WATCHING

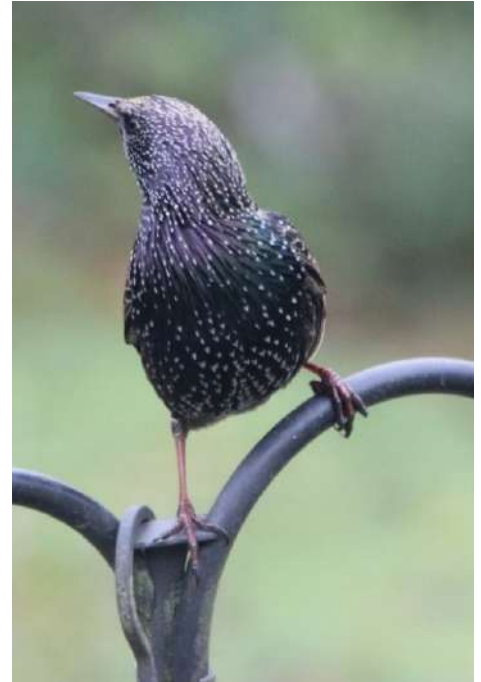
### IN THE PARISH OF ST. IVE

Since moving to the Parish at the end of 2009, I have been photographing and recording the wildlife I see at my home on the edge of Pensilva on a daily basis. This month I thought I would talk about...

#### Starlings.



Photographs  
taken in  
2017

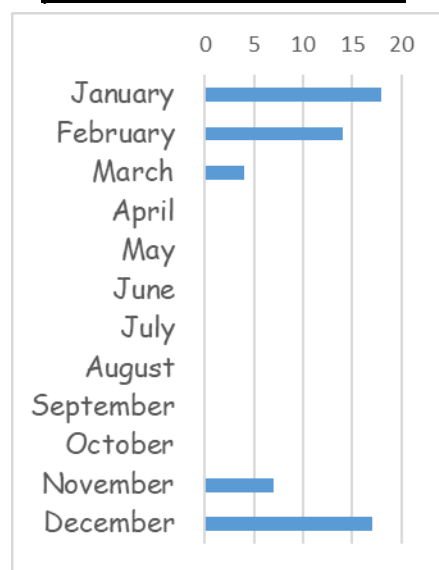


Starling numbers at my bird feeders increased gradually at first, as more of them found what was on offer. Since then they have been steadily declining and the last one recorded in my garden was in January 2020! This combined with the fact that numbers nationally and across Europe have declined by 80% in recent years is an obvious cause for concern and they are now red listed as a bird of high conservation concern. The reasons are unclear, but it is likely that both land usage and climate change have a part to play. Starlings depend on soil invertebrates such as earthworms and leather jackets for food. Soil deterioration due to intensive use coupled with dry summers making the soil impregnable may be at least part of the problem.

Starlings look black from a distance, but close up they are covered in lighter spots and have iridescent colours when the light hits them. There is a dark patch round their eyes which I always feel gives them a slightly sinister look! When they came to the feeders it was usually in groups and (despite being social birds) they were always very argumentative, competing fiercely with each other for their place at table. Their arrival was never boring!

The chart illustrates their highly seasonal presence in the garden. Definitely winter visitors. However, there are starlings resident all year, though their numbers are boosted by winter visitors from the continent. It may be that during the summer food is more readily available elsewhere. As these photos show, they fed on both seeds and fat balls.

Average number of sightings per month from 2010-19



Starlings move around in relatively small groups during the day, gathering into larger and larger ones towards dusk as they head for their night roost. Many of our local birds are likely to head for the Rough Tor area where, if you are lucky (and I never have been!) you may see a murmuration. This is where, in winter, thousands of starlings flock together and swirl about forming amazing, ever changing patterns in the air. They will do this for some time before, at a seemingly agreed moment, they all drop down to their chosen roost area. The exact spot can vary from night to night. How this is coordinated is difficult to understand, but this mass gathering gives safety in numbers and changing venues mean that their predators can't be sure where they will be. These huge gatherings also make it difficult to believe how vulnerable this species is. However these gatherings are getting smaller and fewer. They used to be common over large towns and cities, where they are now almost never seen.



This last photo is of an individual which came to a more natural end in the talons of a sparrow hawk (see my July '21 item). It was very much nature in the raw, just outside my kitchen door, but part of the cycle of life. You can't enjoy the variety of wildlife species without it.

HAPPY WILDLIFE WATCHING!

HILARY

# **News from the Parish of St Ive Community Resilience Project**

## **Community Garden**

Plans for our community garden in St Ive are really moving forward. All the fruit and nut trees and hedging plants are ordered and, thanks to a grant from Forest for Cornwall, we will be able to buy materials for tree protection and other practical items. The proposed garden layout is shown opposite.

Our first volunteer day will be on Sat. 29th of Jan. between 10am and 3pm. We'll be planting and doing some site preparation. The site is on the Glebe Fields behind St Ive Church. We'll provide free hot drinks and cake and we'd love you to join us! No experience necessary. If you don't want to garden, just come and join us for a cuppa and offer encouragement.

if you would like to come, or bake a cake, please email [posicrp@gmail.com](mailto:posicrp@gmail.com), or message us on Facebook <https://www.facebook.com/posicrp>, or phone or text 07768 130520.

## **Repair Cafe - Skills needed, you can help!**

A repair café is a community activity that brings together people who have items they need repaired, with people who have the skills to repair them. At this stage, we are looking for a team of people with a range of skills who might be prepared to help. A repair café is a fun, social event that values the expertise of volunteer craftspeople and saves people money, while helping to reduce waste and consumption. We would like to set one up for our parish and we need your skills and enthusiasm. Don't be shy! You don't need to be the World's leading expert; you just need to know a bit more than the people who bring their stuff in.

If you can sew and mend textiles, or you are good at repairing things, or you can fix gadgets, computers, or anything else, AND you enjoy helping out your friends and neighbours... here is a great opportunity to do good and have fun in the process! Just a few hours, once a month.

It could be: tool and knife sharpening, garden machinery and equipment repair, textiles (sewing, knitting, darning), woodwork, toys, jewellery, electronics, anything!

## **Please get in touch:**

email [posicrp@gmail.com](mailto:posicrp@gmail.com), or message us on Facebook <https://www.facebook.com/posicrp>, or phone or text 07768 130520



PoStIve + Resilient + Together

# St Ive Church Community Gardens Project – Map of Gardens

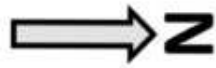
- Apple: 8m spread, 9m height
- Pear: 4m spread, 6m height
- Plum: 4m spread, 4m height
- Walnut: 10m spread, 7m height
- Hazel: 5m spread, 7m height

- Roundhouse: 10m diameter
- 3 Compost bins: 1m x 1.25m
- 2 Vegetable beds: 10m x 1.5m with 1m mown grass paths between.

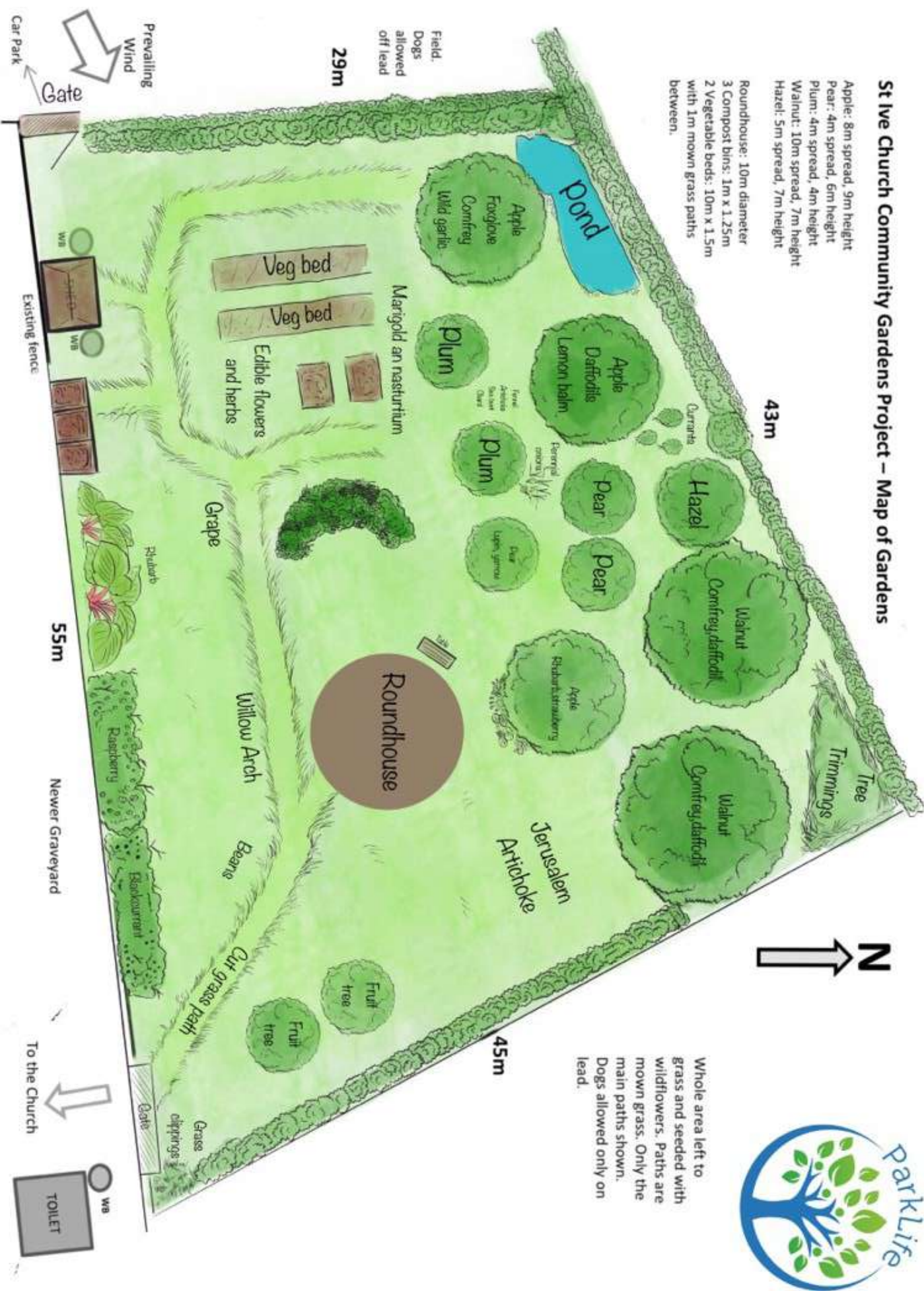
43m

45m

29m



Whole area left to grass and seeded with wildflowers. Paths are mown grass. Only the main paths shown. Dogs allowed only on lead.





CALLING ALL MUMS, DADS AND KIDS,

**PENSILVA PLAYPARK CLEANING DAY**

SATURDAY 11<sup>TH</sup> DECEMBER 10AM - 2PM

BRING ALONG A BUCKET AND SRUBBING BRUSH.

TEA, COFFEE AND CAKE PROVIDED



## Pensilva WI November Report

### Fishy Tales at Pensilva!

Who would have thought that lobsters have teeth in their tummy? This was among the facts in a really engaging talk by Angela Harrison, local fish trade expert. She spoke of the long family history in the industry, how two women helped to build on this amazing local business and how time, politics and challenges have changed fishing in Cornwall so much. Her passion for all things fishy was infectious; members wanted to know how they could help – advice was to buy local for the best, freshest choice.

Birthday ladies this month were Mavis Phelp, Janthia Luter, Lorna Truscott and Rosie Drake.

The competition – ‘A fishy limerick’ displayed a range of poetic talent (humorous and thoughtful) and was won by Jenny Rendle with Mary Yates 2nd and Cherry Woodhouse 3rd. The results of the flower of the month competition were, 1st Jenny Rendle, 2nd Mary Yates and 3rd Cherry Woodhouse.

Our next meeting will be the annual Christmas Party on Dec 8th at 7.15pm. in Millennium House.

### **ART GROUP AT NORTH HILL**

Our art group at present meets fortnightly and our next meeting is on December 14th from 2 pm until 4.30pm in North Hill Village Hall.

We have a tea break midway. We are a very friendly group, a social club as well as an art group. We have a very exciting programme planned for next year: from January we will meet weekly instead of fortnightly.

We have four workshops, so far, planned for next year: Silk Painting, Mixed Media, Chinese Brush Painting and a lesson from a favourite demonstrator on how to paint water in our works of art. We plan one or two trips out as well as one or two outdoor sessions, weather permitting.

We pay £3 subscription each time we attend. New members are asked to pay a joining fee of £10.

If you would like to find out more about us, simply come along, or you can phone me on 01579 352970. Phyllis Harrison ( Chairman).

## Pensilva Film Club

We had another great turnout for this month's movie "Summerland" – a story set in Kent during WW2 following the life of a young evacuee from London placed in a none too-welcoming home! However, "all's well that ends well" and lasting friendships were forged that endured many years. Aahh!! Great performances by a couple of up-and-coming young actors who I'm sure we will be seeing a lot of in the future.

Our next film night is scheduled for Friday 17 December and will feature "The Personal History of David Copperfield" which is a drama/comedy based on the Dickens character that we all know. It stars Dev Patel of Slumdog Millionaire fame taking the part of David in this modern take of a classic tale. Something a bit different for Pensilva film club as we try to vary the genre of films we show. We have had a couple of enquiries about using subtitles during our showings and we will trial this in December as we would like the club to be as inclusive as possible. We also welcome suggestions for films to show in the future.

Looking forward to see you again on the 17th.

**Please wear face-masks when entering and at least until you take your seats.**

Pensilva Film Club – part of Cfylm, Creative Kernow.



# VICTORIA INN

The Cross, Pensilva. Tel: 01579 363933

---

## Opening Hours

Mon & Tues: Closed

Wednesday: 5pm to 9pm

Friday: 5pm to 11pm

Saturday: 2pm to 11pm

Sunday: 12 noon to 6pm

Times may vary when we have functions / live music.

---

## Meals on Wheels Service

Wednesday to Sunday (varied menu)

Please give us a call if this may be of interest to you  
or if someone that you know may need our help.

---

## Our full menu is also available for delivery or to eat in.

Wednesday Evening - Homemade Pie Night (varies weekly)

Also includes a dessert. **£9.95**

Please check our weekly 'Specials'

Thursday Evening - Curry Night (Eat in or Takeaway) **£6.00**

Friday & Saturday Evening - Fish, Chips & Peas Special

Small **£5.95**, Large **£7.95**. Add a dessert for **£1.00**

Sunday Carvery 12noon to 3pm **£9.50** (Collection, Delivery or Eat in)

---

December: Christmas Party Nights - Friday or Saturday

Christmas Eve Lunchtime - Christmas Dinner

## Live Music

December 17th Josh Taylor

December 18th Disco

New Years Eve The Flying Sorcerers

# ST JOHN'S CHURCH LIGHT PARTY



80 cups of hot chocolate & Bags of Hope were given to those who visited the church & enjoyed craft activities.



## **St Ive and District Gardening Association**

Who would have thought that the bucket of twigs that George Kestell brought along to our November meeting would be the basis for such an interesting and entertaining talk on hedges? Quiz time followed, with all asked to identify the hedging plants and a discussion on their virtues and problems in use. The salt tolerant ones (a necessity in many Cornish locations) might not be happy in a damp, soggy, heavy soil, and sharp prickly ones a definite misfit for a child-friendly garden but great to keep the neighbour's sheep out.

The speaker for our next meeting will be Tim Payne who will talk about the work of city bees. He will also be bringing some honey for sale.

That evening we will be taking bookings (and collecting deposits) for our annual lunch on Saturday 8<sup>th</sup> January 2022, to be held at The Rifle Volunteer in St Anne's Chapel.

Our meetings are held in St Ive village hall, starting at 7.30pm and visitors are always welcome to join us.



### **News from The Growing Project**

The Growing Project is already very well-known to many in our parish, if nothing else from the many articles it has contributed to the Parish Pump over the years. For those who are not so familiar with it, it is a Community Interest Company, founded in 2011 by the late Ruth Wilson, where local volunteers grow and sell organic fruit and veg for the local community. At the same time it provides a safe space for the helpers to enjoy a beautiful, peaceful and healing environment. About three or four years ago, The Growing Project inherited the one-acre site in Pensilva where it is located, but while the facilities there for growing produce are first class, the facilities for the people involved are very basic. So, The Growing Project has launched a crowdfunding initiative to help to finance the provision of electricity, running water, and some toilets. To find out more go to <https://chuffed.org/project/the-growing-project-fundraiser>

## Good glean fun

The Gleaning Network is a network of groups, organisations, farmers, charities and keen volunteers who are all working to reduce farm-level food waste - and now it's jumping into action also in South East Cornwall!

Our aim is to harvest unwanted and surplus vegetables from fields that are about to get ploughed-in, and distribute said veg to food banks and community kitchens where it is needed the most. Food banks are crying out for fresh produce, with many users suffering from malnutrition.

We need volunteers on the ground, friendly farmers and transportation links to make this happen... And that is where you come in - come glean with us! We're not only looking in South East Cornwall, it's Cornwall-wide and now splurging into Devon, and all volunteers, transporters, food hub spaces, and farmers from wherever you hail are most welcome, needed and appreciated. To connect with the SE Cornwall crew, please check out our Facebook page by searching "Gleaning Network SE Cornwall" and for more info on what is happening across the county visit <https://gleaningcornwall.org.uk>



## Supporting Guiding & Scouting Activities in Pensilva 200 CLUB Draw Results for October 2021

<b>1st No. 176</b> <b>Mr P Robinson</b>	<b>2nd No. 10</b> <b>Mrs F Tucker</b>	<b>3rd No. 46</b> <b>Ms M Ede</b>
--------------------------------------------	------------------------------------------	--------------------------------------

**Thank you for your support**

# THE Growing Project PENSILVA

## OUR NEWS

It is the time of the year when the harvest is rich of colourful vegetables and fruit. Look at our recent box which , we are pleased to say, more customers are enjoying. From the project you will find: an exciting range of squashes, courgettes, peppers, salad, kale and our delicious Cornish apples and exotic physalis also known as the Cape gooseberry. The physalis are grown in one of our tunnels.

Onions, garlic, salad have been planted.

The vegetable beds have been mulched and will be left to rest for the winter.

At Callington country market we have been successful in selling some of our vegetables.

We are pleased that some new people have joined our volunteer team.



## PICK UP A VEG BOX BUY FROM THE STALL

All of our organic vegetables are either grown at The Growing Project in Pensilva or supplied by local organic growers.

You can buy directly from our outside stall, 7 days a week 24 hours a day - money in the letter box.

Or order a box from us: large box £11, or smaller box £8.50.

If ordering, please place your order by midday Monday.

Collect your box on Wednesdays, 1 pm to 1.30 pm, or we can deliver within 5 miles, £2 donation

## Volunteers welcome!

We are looking at increasing our group of volunteers.

Do you have half a day to spare, to join a happy team, contribute your skills, learn new ones. Pop in on a Wednesday between 10 and 2 pm and find out more.

To order your box or  
for more info



07854353865



@thegrowingprojectpensilva

**Visit the Growing Project:** Higher Road, Pensilva, PL14 5NH

Regional sponsor:  
 **The Exeter**



children's hospice  
SOUTH WEST

Celebrating  
**30**  
years



# Santas on the Run goes freestyle

eden project

Join us at  
the Eden Project on  
Sunday 5 December 2021

Sign up today  
[www.chsw.org.uk/santas](http://www.chsw.org.uk/santas)

Or take part virtually, anywhere!



Raise festive  
cheer in your  
Christmas  
gear!



Making the most of short and precious lives across the South West  
Registered Charity No. 1003314



ST IVE RESIDENTS CHRISTMAS GET TOGETHER

# SKITTLES NIGHT

**FREE EVENT**

**BUFFET**

**RAFFLE**



**MUSIC**

**FOOD**

**SELECTION BOXES FOR THE CHILDREN**

**DATE SATURDAY 11<sup>TH</sup> DECEMBER**

**TIME 7PM TO 10PM**

**ST. IVE VILLAGE HALL**

**R.S.V.P. Amanda 07703393070**

Yn Poynt Da  
present

AGATHA CRUSTY  
and  
THE VILLAGE  
HALL

MURDERS

By Derek Webb



on

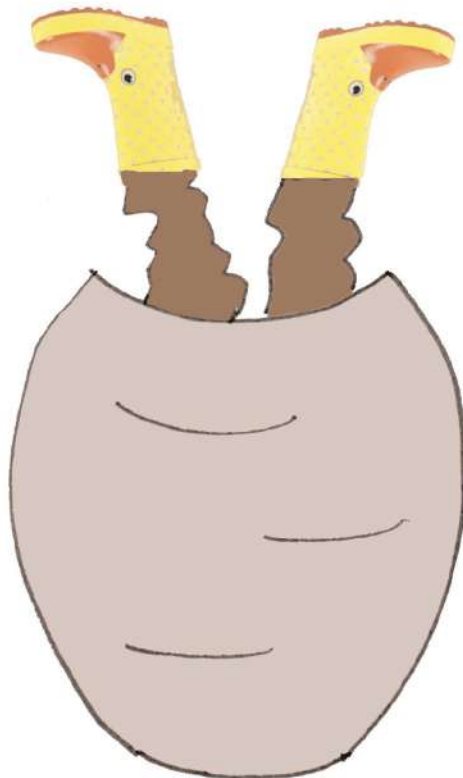
Saturday  
11th December

in

Millennium House  
Pensilva

at 7.30pm

£5 entry  
pay at the door



'An amateur production  
by arrangement with  
Stagescripts Ltd'

**CAROLS IN THE CAR PARK!**

**AT 7PM, TUESDAY 14<sup>TH</sup> DECEMBER.**



**ST IVE CARPARK  
(BY THE PLAYGROUND)  
COME AND SING!**

**BE GONE GLOOM AND DOOM!**

**WELCOME SPARKLE AND VILLAGE CHEER!**

**IF YOU WOULD LIKE TO BRING A DRINK AND CHANGE  
FOR DONATIONS TO CHARITY, PLEASE DO.**

## St John's Church Good Grief Cafe

There is no right or wrong way to grieve.

We aim to bring the bereaved community together, with time to share experiences and to bring comfort to one another in what can be an isolating and lonely time. There is no agenda, just free tea, cake, chat and friendship.

All are welcome, and please use this as an opportunity to invite someone.

*Wednesday 15th December 3.00 to 5.00 pm*

*Contact Geoff on 01579 362698*

## PENSILVA MEMORY CAFE

*If you have memory problems or you are a carer for somebody who does, and would like to meet others who understand your*



*situation, then join us at St John's Church*

**Thursday 16<sup>th</sup> December 2.00 to 4.00 pm**

*Contact Geoff on 01579 362698*

# **BRITISH HEART FOUNDATION**

---

## **CHRISTMAS BINGO**

**MILLENNIUM HOUSE SPORTS HALL**

**THURSDAY 16<sup>TH</sup> DECEMBER**

**EYES DOWN 7.30 PM**

**GREAT FESTIVE PRIZES**

## **T.K.Y.**

**Tribute Kids and Youth**

To book a place contact: [revbeccabell@gmail.com](mailto:revbeccabell@gmail.com)

## **Next Meetings**

**Sunday 5th and 19th December**

**Primary aged kids: 4.30 pm - 6.00 pm**

**Tea for all: 5.30 pm**

**Secondary aged youth: 5.30 pm - 7.30 pm**

**at**

**Menheniot Parish Church**

**The Tribute Cluster of Churches**

# St John's Church

Pensilva

## COMMUNITY LUNCHEES

### Thursday 2<sup>nd</sup> December



12.00 to 1.30 pm

# BAKED POTATOES

Donations in aid of church funds



## Saturday 18<sup>th</sup> December

12.00 to 1.30 pm

# Christmas Charity Lunch



Soup &  
Dessert

# £5

Helping  
local people  
in crisis

Liskeard &  
Looe

# foodbank

*Bring and Buy Stall*

# ST IVE PARISH CHURCH

## CAROL SERVICE

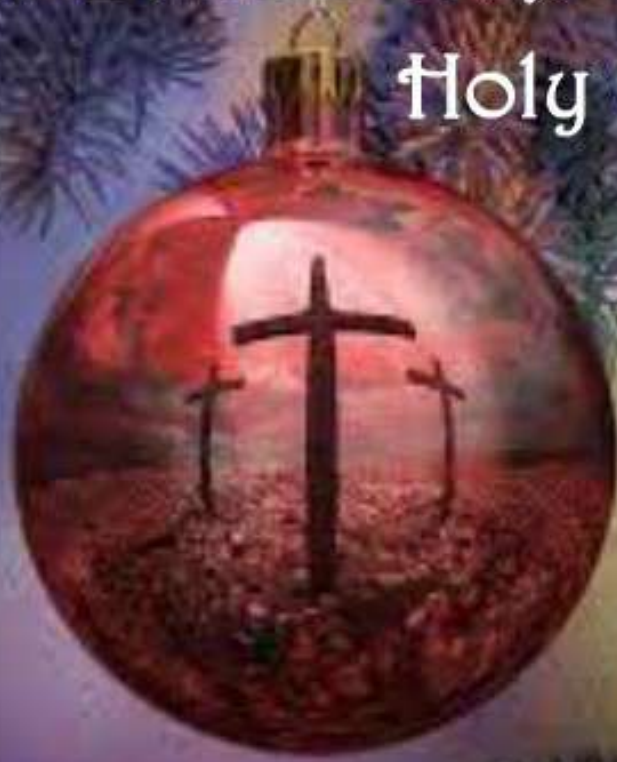
Sunday  
19<sup>th</sup> December  
11.00 am



Please send your carol choices to Brian Dwelly: [btdwelly@aol.com](mailto:btdwelly@aol.com)

## Christmas Eve Holy Communion

Friday  
24<sup>th</sup> December  
9.00 pm  
at  
St Ives  
Parish Church



# Christingle

Sunday 19<sup>th</sup> December

6.00 pm

**STERTS Theatre**  
**Upton Cross**

Presented by St John's Church, Pensilva

**Come and join the celebration**



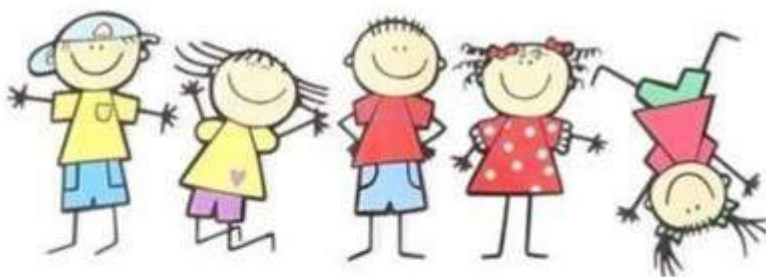
Everyone will be welcome at the St John's Christingle Celebration. Doors will open at 5.30 pm. Entry is free but you must book in advance. This can be done by emailing [gefferys1963@gmail.com](mailto:gefferys1963@gmail.com) or phoning 01579 362698 between 4.00 and 6.00 pm. When booking you will need to give your contact name, the number in your party and two points of contact, e.g. your phone number and email address. Your party booking will be checked at entry. A retiring collection will be made for local charities.

***We have to ask everybody to make and bring their own Christingle.***

Fasten a piece of red sticky tape or ribbon around the middle of an orange. Cut a small cross in the top of the orange and lay a 75mm square of silver foil over the cross. Place a candle on top & wedge it firmly into the orange. Load four cocktail sticks with raisins, sultanas, cherries or soft sweets and insert them into the orange around the candle.

***No lighted candle flames will be allowed at STERTS.*** Light sticks will be given out on the night, to be activated when we sing the Christingle song.

**Come to our Christingle Celebration  
and learn what the Christingle represents.**



**Sunday Dec. 19<sup>th</sup>**

**10:30am – 2:30pm**

**Children's Toys,  
Games, Books @  
The Parish Hall,  
Golberdon  
PL17 7ND**



**Don't buy new this Christmas, just swap what you don't use!**

Stuffed animals, cars and trucks, dolls and dollhouses, building toys, books, games and puzzles, outdoor toys, bikes, video games and DVDs.

All toys should be in good clean condition so other kids will enjoy playing with them.

To drop off items before the event call 07305 044049

or email [SHARE@south-hill.co.uk](mailto:SHARE@south-hill.co.uk)

Nothing to swap? From 1pm all items can be purchased.



**Tea, Coffee, Squash, Snacks & Cakes**



# ST JOHN'S CHURCH, PENSILVA

## CHRISTMAS 2021

### Carol Service



**Sunday  
19th December  
11.00 am**



### Christingle

**Sunday 19<sup>th</sup> December**

**6.00 pm**

**STERTS Theatre  
Upton Cross**



**See separate advertisement**

**BLUE CHRISTMAS SERVICE  
Tuesday 21st December 2.30 pm**



**A service of healing and  
hope for those who are  
hurting this Christmas**

**Christmas Eve  
Friday 24th December  
6.00 pm  
Carols around the Crib**



**MERRY  
CHRIS + MAS**

**Christmas Day  
10.30 am  
Family Worship**

**Bring & show your presents**



# ST JOHN'S CHURCH, PENSILVA

A united Church of England & Methodist Church congregation

## Services for December 2021

Sunday	5 <sup>th</sup>	11.00 am	Ros & Martin O'Connell
Sunday	12 <sup>th</sup>	11.00 am	Café Church Geoff Cox & Carol Morse
Sunday	19 <sup>th</sup>	11.00 am	Carol Service
		6.00 pm	Christingle at STERTS <i>see separate notice</i>
Tuesday	21 <sup>st</sup>	2.30 pm	Blue Christmas Service Geoff Cox
Saturday	25 <sup>th</sup>	10.30 am	Christmas Day Celebration Geoff Cox
Sunday	26 <sup>th</sup>	No service at St John's 10.00 am Cluster service at Merrymeet PC	

## EVENTS

Thursday	2 <sup>nd</sup>	12.00—1.30 pm	Baked Potato Community Lunch
Wednesday	15 <sup>th</sup>	3.00—5.00 pm	Good Grief Café
Thursday	16 <sup>th</sup>	2.00—4.00 pm	Memory Café
Saturday	18 <sup>th</sup>	12.00—1.30 pm	Charity Lunch for Liskeard & Looe Foodbank
Friday	24 <sup>th</sup>	6.00 pm	Carols around the crib scene outside the church

*For further details of the services and events at St John's, or if you know of any illness or need in the village, please call Geoff, 362698 or Frances, 363718.*

## **St Ive Methodist Chapel**

### ***Services for December 2021***

<b>Sun 5<sup>th</sup> Dec</b>	3 pm	Keith Mutton
<b>Sun 12<sup>th</sup> Dec</b>	3 pm	Rev. Iris Bray with Baptisms
<b>Sun 19<sup>th</sup> Dec</b>	11:15am 2:30pm	United Service at Anglican Church Cornish Language Carol Service
<b>Sat 25<sup>th</sup> Dec</b>	9:30am	Rev. Iris Bray
<b>Sun 26<sup>th</sup> Dec</b>		No service

The Chattermakers group continues to meet on every other Thursday in the kitchen room of the Chapel. If you're not into craft but would like a chance to meet new people or just get out for the evening to chat, please contact Kathryn on 01579 382334 for more details and the date of the next meeting. All welcome.

# Millennium House Coffee Shop Opening Hours

We are open Tuesdays, Wednesdays and Fridays, 9am to 1pm  
(to coincide with Post Office days).

Our intention is to open more days and for more hours as soon as Covid regulations allow.

Covid precautions are in place at all times, providing a safe environment for our customers.

## *All Being Well*

We are still open for three mornings a week. A maximum of six members can now attend at one time.

### Opening hours:

Monday, Wednesday and Saturday, 9am to 1pm.

Maximum six members at a time for each of three slots within each session: 9:00 to 10:20, 10:20 to 11:40 and 11:40 to 13:00

### **Prior booking is essential**

To book yourself in or for any enquiries, call in at the gym or telephone on **01579 363890**, during the opening hours listed above.

**Over 20 years working in our local community to improve health, fitness and well being.**

# Badminton has restarted at Millennium House

Come and join our relaxed and friendly group.

**Mon & Tue 7:30 - 9:30pm**

For further info phone Nigel or Carol on 01579 363594 or 07885 798370

## **PENSILVA VILLAGE HALL**

**We are now open and back in business!**

Anyone wishing to book the hall for meetings, birthday parties or fundraisers, please contact Peter or Jackie

Browning on **01579 363212** or email **peterpensilva@gmail.com**

Please note that as well as hall rent there is a coin meter for



## **MOBILE LIBRARY**



**The County Mobile Library is back.**

It visits our area once a month on Fridays of "week 3" (not necessarily the 3rd Friday of the month).

Next visits: **Dec 12.**

Stops at The Victoria Inn, Pensilva, 10.25-10.45am; Quethiock bus stop 11.00 to 11.20am.



## **Struggling with Sight Loss?**

iSight Cornwall offers practical help to people living with sight loss in Cornwall including:

Low Vision: Advice for low vision aids

Assistive Technology: Advice on products

Benefits Advice: Assistance to claim entitlements

Equipment Demonstration: Advice on gadgets

Social Clubs & Activities: Links to clubs & activities in the county

For more details Telephone 01872 261110 or visit

[www.isightcornwall.org.uk](http://www.isightcornwall.org.uk)

# MILLENNIUM HOUSE

COMMUNITY CENTRE, AND DYNAMIC EVENT  
VENUE IN THE HEART OF EAST CORNWALL



#### Conferencing

We have four meeting rooms for all your corporate needs.



#### Function Room

For parties, discos, or just larger events; with adjoining kitchen and bar.

### Our Facilities

#### Sports Hall

For sports or larger events requiring a stage, the sports hall is our biggest venue.



#### Coffee Shop

Providing tea, coffee and cake. And for something stronger, there's the Mel, a licensed bar.



**Enquire today:**  
**01579 363096**

[www.millenniumhouse.org.uk](http://www.millenniumhouse.org.uk)  
PRINCESS ROAD, PENSILVA, PL14 5NF

## What Do We Do?

From wedding to wakes, kids or adults, corporate or community, we can host and cater your event. If you have an idea that's not covered here, get in touch and see if we're the right venue for you.

#### We're also home to:

- ✓ The Mel bar
- ✓ All Being Well Fitness Centre
- ✓ Post Office
- ✓ Sunflower Park kids playground
- ✓ Extensive playing fields
- ✓ Community Library



## SHARE Recycling for Charity

will be by St Johns church

Saturday Dec. 11<sup>th</sup> at 12:30

Drop off your items at the recycling project trailer  
We will also be collecting sweet tubs and milk bottle tops for Dartmoor Zoo and Mind charity during January & February, so save the sweet wrappers & tubs.

For a full list of items we collect from crisps packets to toothpaste tubes visit our web page

[www.south-hill.co.uk/charity-recycling](http://www.south-hill.co.uk/charity-recycling)



## Recycle & Raise

Recycle your plastic containers & Raise money for charity

### We are collecting:

Confectionery tubs  
Ice cream tubs  
Cracker tubs  
Milk bottle tops  
Takeaway containers

Must be  
500g or more  
500g plastic  
Look for this logo

Drop them off to your local collection point!



Organised by:



Proudly supporting



Please visit [www.south-hill.co.uk/charity-recycling](http://www.south-hill.co.uk/charity-recycling) or email [info@south-hill.co.uk](mailto:info@south-hill.co.uk) for more information.  
Charity No 260898000 Charity Number 104022 - Mind (ing) 2608980000

Thank You for the amazing support  
for our project, you have helped us raise  
over £5400 for Kicks Count charity by  
donating your "rubbish"!

### Coins & Currency

Banknotes & Coins  
Any currency UK or foreign  
of any age/unchangeable  
currency



### Mobile Phones, Cameras & Gadgets

Mobile Phones, Video Cameras  
Old Film Cameras, Digital  
Cameras, Sat Navs  
Game Consoles, Games &  
Accessories, iPods, MP3 Players  
Laptops, Tablet Computers



### Jewellery

Unwanted gold & silver  
including damaged items  
Costume jewellery  
Watches



### Pre Christmas Declutter !

We also accept all the above  
items plus used postage stamps  
(leave a good paper edge  
around them) for the local Hill  
Pony Resources charity, plus  
DVD's and CD's in cases help  
Animal Free Research charity.  
Keep On Recycling !!





## **Looe & South East Cornwall**

**Traineeships: Age 16 – 24** - Maths & English Functional Skills, Digital Skills, 1:1 support, 70 hour work placement and more.

We pay £6pp per day travel costs, £5pp per day lunch costs and £35 per day childcare costs.

**COMPASS: Age 16-24** - 1:1 tailored support with next steps. Build your CV or Upskill your qualifications. Get support with confidence, motivation or life skills.

### **Vocational courses: Age 16+ (no upper age limit)**

**Many of these courses can be delivered in locations across Cornwall:**

CSCS Training

Introduction to Customer Service with Level 2 Food Safety & Catering

Introduction to Working with Children - Level 2 Safeguarding

Health & Safety in the Workplace Level 2

First Aid Level 3

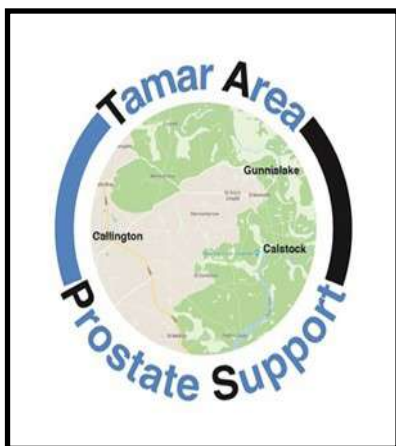
**\*All of our programmes offer the unique opportunity to spend 2 weeks in Spain on a work placement with all costs covered**



Enabling Business  
Inspiring People



Education & Skills  
Funding Agency



As with all local groups who meet regularly, COVID-19 knocked our plans sideways and we resorted to using Zoom. But with light finally on the horizon (better than at the end of the tunnel) we are hoping to restart our face-to-face meetings later this year, at Callington Town Hall.

In the meantime, we have created a new website which carries news of our Zoom meeting dates, speakers, copies of all editions of our newsletter “The Faucet”, and how to make contact with the TAPS team, as well as other useful information.

If you are recently diagnosed and just want to have a chat about your treatment or your options, we encourage you to get in touch.

Find us at: -

Website: <https://www.tamarareaprostatesupport.org/>

Email: [tapsinfo555@gmail.com](mailto:tapsinfo555@gmail.com)

Phone: Chris on 01822-834797

# Bargain Corner Free Ads up to £50

Ads are free for items up to £50. £5 charge for items over £50. Please ring the Parish Office on **01579 363096** or leave a note at Millennium House reception or email **parishpump@btconnect.com**.

**\*\*\*Please let us know when your item has sold\*\*\***

**Ladies Superdry Jacket.** Size Med. Good condition. **01579 346982.**

**2 short legged wetsuits.** 1 x 38" chest and 1 x 42" chest. Used once. As new. **£20 each. 01579 362128.**

**Gazaco Child's Car Booster Seat** used once only. Brand new car seat protector for above. **£30.**

**Exercise bike** with program booklet **£50.**  
**Bayliss automatic greenhouse window opener.** Brand new, never used. **£15.**

**01579 362688**

**Canon IP2700 Printer. £20**  
**Computer screen 19" £20.**  
**Epson Perfection v350 Scanner Photo £20**  
**Sony Revia 42" TV. £45.**  
All in working order. **01579 363200**

**Petrol lawn mower,** approx 19 ins, in working order. **£30**

**Crockpot slow cooker,** hardly used, excellent condition. **£10**

**01579 363573**

Set of 3 **suitcases**, red, vgc, Antler, **£40** ono. **07770 747353.** Pensilva area

Set of **Snow chains**, new and unused fit 14" to 19" rims, self adjusting. **£40**  
Pensilva **01579 362207**

**Long handled garden fork** in VGC. Ideal to prevent back strain when digging or removing shrubs. **£15.** Collection Only,  
**2 electric drills** in working order with chuck keys **£15** for the two.

Brand New **Vinyl Flooring** for kitchens, bathrooms or hallways 13ft long x 2ft 11 inches wide. Colour light to mid grey. **£25.**

Early 19C / late 18C **cast iron fireplace faceplate** in GC, 36" high x 24" wide. Ideal as a fire faceplate or ornament. **£35..**

Six coils of industrial steel cable now surplus to requirements **£35** the lot.

**01579 384658** (Safe Distancing if reqd.)

**Please let us  
know when  
your item has  
sold**

# ADVERTISING SECTION

**TO OUR ADVERTISERS:** Firstly, thank you for advertising in the St Ive Parish Pump. Your support enables us to provide a much-valued monthly newsletter to our parishioners, while also giving businesses in our area affordable access to a sizeable local market of grateful consumers.

New advertisers will be asked to pay in advance and their advertisements will not be included until the edition following the 15<sup>th</sup> day of the month in which payment is received. Advertisers who are behind with their payments will have their adverts removed from subsequent editions until payments are brought up to date. To make it easier for you, we are adding a facility to pay by card over the phone.

Advertising prices:	<u>Net of VAT</u>		<u>Including VAT</u>	
	<u>1 month</u>	<u>12 months</u>	<u>1 month</u>	<u>12 months</u>
<b>Quarter Page:</b>	£ 8.33	£83.33	£10.00	£100.00
<b>Half Page:</b>	£ 16.67	£167.67	£20.00	£200.00
<b>Full Page:</b>	£ 27.50	£275.00	£33.00	£330.00

Thank you, once again, for advertising in our newsletter. We hope that you will continue to do so, and we wish you every success with your business.

## **Debbie Hicks - Counselling and Psychotherapy**

*Caring, confidential counselling for all.*

*I work in a therapeutic relationship to help you understand yourself better.*

*I offer a warm, approachable, relaxed environment for you to untangle your thoughts and emotions.*

*More info on my website or by contacting me.*

**www.debbiehickscounselling.co.uk**

**Email:debbiehicks10@gmail.com**

**07851 133782**



## **TRADITIONAL STONE SERVICES**

**CLASSIC & TIMELESS STONE MASONRY AND LETTERING**

**MEMORIAL CLEANING**

**COMMISSIONS TAKEN**

**01579 363693 OR 07507 782282**

Find us online:  
[fresh\\_prop.co.uk](http://fresh_prop.co.uk)



**Top quality carpet, upholstery & hard floor  
cleaning services based in Callington**  
**Long-established cleaning professional**  
**Domestic & commercial**  
**NCCA qualified & member**  
**Steam cleaning & dry carpet cleaning**  
**Tile & grout + natural stone clean & seal**  
**Vinyl & LVT including Amtico & Karndean**  
**Call 0800 3893393 or 07905 188459**  
**Or email [nevil\\_fresh@msn.com](mailto:nevil_fresh@msn.com)**



## **FOR ALL YOUR CELEBRATION NEEDS**

Visit our shop: 12 Fore Street, Callington

Call us on 01579 384386

Find us on Facebook or visit our website:

**[www.victoriaeyton.co.uk](http://www.victoriaeyton.co.uk)**

- Helium Balloons - Balloon Arches -
- Bespoke Balloon Designs -
- Personalised Balloons - Partyware -
- Huge selection of greetings cards -
- Weddings, Parties and Corporate events catered for.

## **ADVERTISE HERE!**

**£10.00 per month inc VAT**

**OR**

**£100 inc VAT for 12 months**

**One thousand copies per  
month** distributed free of  
charge to households in the  
Parish of St Ive.



Domestic Electrical  
Property Maintenance  
Interior & Exterior Work  
Carpentry :: Decking  
Kitchens :: Bathrooms  
Wall & Floor Tiling  
General Plumbing

**MCCARTHY PROPERTY MAINTENANCE**

**Electrical Safety  
Register** incorporating  
ELECTSA  ECA  
Certification Ltd

**HIGHLY REGARDED LOCAL BUILDER  
COMPETITIVELY PRICED  
COVERING THE SOUTH WEST**

Contact Dominic

07968 599 675

01579 362 945

[info@mccarthypropertymaintenance.co.uk](mailto:info@mccarthypropertymaintenance.co.uk)

**[www.mccarthypropertymaintenance.co.uk](http://www.mccarthypropertymaintenance.co.uk)**



# JJ MOSS

THE MILKMAN ON YOUR DOORSTEP

01579 349093 - 07882 618488

JJMOSSMILK@GMAIL.COM

**WE ARE A FAMILY RUN BUSINESS BASED OUT OF LISKEARD.**

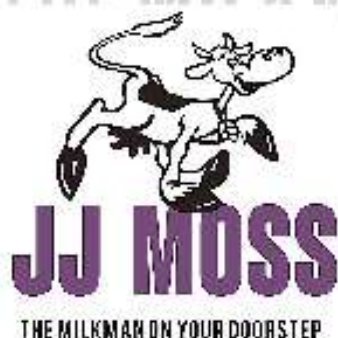
**FRESH FRUIT & VEG, BUTCHER MEATS &  
POULTRY, FRESH FISH, BAKERY GOODS,  
FREE RANGE EGGS, ALL DAIRY GOODS,  
PRESERVES & JAMS, HOUSEHOLD ITEMS,  
NEWSPAPERS & MAGAZINES.**

**ALL WITH NO DELIVERY CHARGE.**

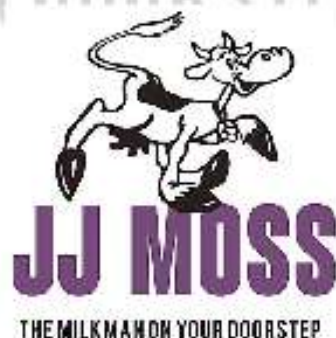
**WE CURRENTLY DELIVER IN YOUR AREA ON MONDAY/  
WEDNESDAY/ FRIDAY.**

**PLEASE FEEL FREE TO PHONE / EMAIL WITH YOUR ORDER / ENQUIRY.**

**THANK YOU FOR YOUR SUPPORT!**



**JJ & EVE**



# **ADVERTISE HERE!**

This box for **just £33 per month** including VAT  
OR

£330 including VAT for a 12 month order.

i.e. **£27.50** (£22.92 net) per month

See the full tariff on page 3

One thousand copies per month  
distributed free of charge to  
households in the Parish of St Ive.

# Westwood Garden Maintenance



*Antony Watts*

*Grass Cutting, Clearance*

*Weeding, Turfing*

*Hedge Cutting*

*Patio Cleaning, Planting*

*Regular Visits / One-off Contracts*

*Residential & Commercial*

**FREE ESTIMATES**

01579 362019 [www.westwoodgm.co.uk](http://www.westwoodgm.co.uk) 07952 094472

## JPH Plastering and Rendering

Internal plastering

Internal and external rendering

Internal/external painting & decorating

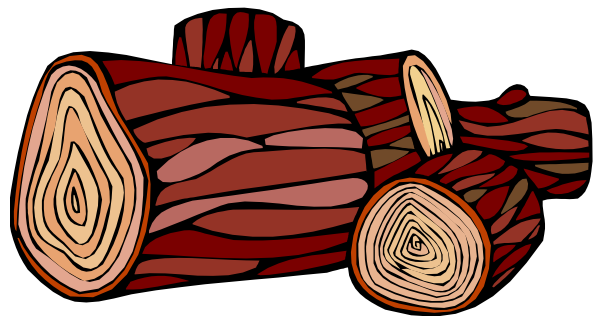
Property maintenance

Landscaping and land management

For estimates and no obligation quotes  
contact Justin on:

**07539 296799 or**  
**info@just-in-stone.co.uk**

## SEASONED LOGS



**MIXED LOAD**

or

**HARDWOOD**

**Tel. Jonathan**

**Mobile 07966 070725**

or

**01579 363157**

## PENROSS

Rosecraddoc Lodge Holiday Bungalows  
(Between Pensilva & Liskeard)

Ideal for family & friends coming to visit!



Refurbished in 2018. Sleeps 4. Electric, heating, bedding & towels inc in rent. Patio. Free wi-fi. Follow us on Facebook.

Sorry no pets or smoking.

Contact Julie Tucker on 01579 362221 or

email [penhargetfarm@gmail.com](mailto:penhargetfarm@gmail.com)

for 15% discount

## NICOLA GREENE

BSc (hons) Podiatry MChs

HPC Registered Chiropodist/Podiatrist

**Home Visit Practice treating all  
your foot care needs:**

- Nail Cutting
- Corns and Calluses
- Thickened Nails
- Dry Cracked Skin
- Verrucae
- Foot Pain
- Diabetic Foot Assessments
- Wound Care

**T: 01579 590027**

**M: 07786164205**

**E: [nicki\\_greene@yahoo.com](mailto:nicki_greene@yahoo.com)**



Maintaining and preserving our  
countryside for the benefit of all

Dry Stone Walls

Cobblestoning

Stone faced walls

Hedgelaying/steeping

Land management

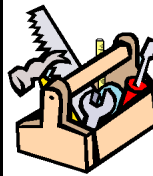
All aspects of Landscaping

**Mobile: 07539 296799 or**

**Email: [info@just-in-stone.co.uk](mailto:info@just-in-stone.co.uk)**

## KEEP IT TIDY

General Property Maintenance  
including Decorating, plus Electrical



**HONEST PRICE  
for  
QUALITY WORK.**



**No Job Too Small**

**Kit Rickard**

18 Higher Glen Park  
Pensilva

**Phone: 01579 363378**

**Mobile: 07855 699071**

**Email: [KITKeepItTidy@hotmail.com](mailto:KITKeepItTidy@hotmail.com)**

**Debbie's Care Services**  
**Tel. 0777 948 3230**

Hello, my name is Debbie. I am a local lady who has been working in the community for over 30 years.

I provide the following services and more!

- Assisting bathing / showering
- Preparation of meals
- Cleaning / Shopping / Ironing
- Companionship / Friendship and emotional support
- Assisting with mobility
- Day, Evening and Night Care

**MUST STEP**  
**PODIATRY**  
**HCPC Registered**  
**podiatrist**

Fully insured  
NHS experience

Kind and caring

Home visits

**All your footcare needs**

Most areas covered

**Tel: 07522 577012 or**  
**07561 608296**

**DO YOU NEED A HELPING HAND?**

Reliable, friendly,  
experienced, mature  
local resident offering  
the following services:

**Cleaning      Ironing**

**Shopping      Light Gardening      Dog Walking**

CRB/DBS checked and fully insured.      Competitive rates.

**Contact Jess:** Telephone or text: 07934 764 327.

Email: homeangel77@yahoo.com. Find us on Facebook



# **Matt's Windows**

**Repair of Windows, Doors  
& Glass Unit Replacement**

**T: 01579 641228**

**M: 07533 387368**



## **PENSILVA GARDENER**

**20 years experience in Garden  
and Countryside skills.**

**All garden work undertaken.**

**Call Chris on 01579 383047  
or 07792 936413**



KV Accounting Solutions



## Local Accountant offering fixed fee accounting services

With over 20 years experience, I am a fully qualified, friendly, local accountant

- ✓ Annual Accounts for Sole Traders and Partnerships
- ✓ Book Keeping & Payroll
- ✓ Personal Tax Planning
- ✓ Company Accounts
- ✓ Business Support & Advice

- ✓ Self Assessment tax returns
- ✓ iXBRL tax filing
- ✓ Tax investigation Fees Insurance
- ✓ Company Secretarial work
- ✓ Tax calculations for Sole Traders and Partnerships

Kate Vaughnley FCCA - Chartered Certified Accountant

Website : [www.kvaccountingsolutions.co.uk](http://www.kvaccountingsolutions.co.uk) or Email : [katevaughnley@gmail.com](mailto:katevaughnley@gmail.com)  
Telephone : 01579 364083



**Gas Services**

**NATURAL GAS - LPG - OIL**

**BOILER INSTALLATION**

**BOILER SERVICE & REPAIR**

**LONG WARRANTY FREE QUOTES**

**07859848288**

**[bagasservices@outlook.com](mailto:bagasservices@outlook.com)**





## Affordable Counselling

Caring, confidential,  
non-judgemental

- Increased confidence and self esteem
- Help to cope better at difficult times
- Improved relationships
- Clarify confused thoughts & feelings
- Assertiveness
- Personal insight
- Improved emotional health
- Available for youth and adults

**Isabelle McGarahan BA, PGCE**  
**Dip in Therapeutic Counselling,**  
**Accredited ACC, DBS cleared**  
**[www.im-counselling.org](http://www.im-counselling.org) email:**  
**[isabelle@im-counselling.org](mailto:isabelle@im-counselling.org)**  
**01579 344090/07857326229**



## P BRADLEY PLUMBING & HEATING

Email: [info@pbplumbingheating.co.uk](mailto:info@pbplumbingheating.co.uk)

Web: [www.pbplumbingheating.co.uk](http://www.pbplumbingheating.co.uk)

Facebook: @PDBradleyPlumbingandHeating

**NO JOB TOO BIG OR SMALL**

**24hr Emergency Call Out**

**Based in Liskeard**

**Call Today 07598956760**

## ***"The complete bathroom installation service"***

**New bathrooms fitted,  
floor and wall tiling specialist**

**General Plumbing including:**

- Bathroom makeovers
- Dripping taps and burst pipes
- Pump and cylinder changes
- Radiator upgrades and additions
- Specialist in Leadwork
- No job too small
- No Call out charge



**Friendly Service, Quality Work**

**NO VAT**

**City and Guilds Qualified  
established 1983**

**Call William Hale on**

**Tel: 01579 362132 Mobile: 07826 699719**



Kiln Dried Firewood  
Kindling & Firelighters  
Eco Heatlogs  
LPG Bottled Gas  
Patio, BBQ & Camping Gas  
Coal & Smokeless Fuel



**0800 8021 223**

**sales@loganslogs.co.uk**  
**www.loganslogs.co.uk**

## Heel 2 Toe Footcare

Tired Aching feet.

Corns, Hard skin, Verruca.

Fungal infected toe nails, or  
toe nails require cutting.

Diabetic feet also treated and  
regularly checked.

I can help to keep your feet  
looking and feeling good.

I am a trained Foot Health  
Practitioner to Diploma Level, fully  
insured & DBS checked.

I can do home visits via an  
appointment.

Call Penny: **07746 926146** for  
further information. **Please note**  
**new number May 2021.**

## MARK FITCH CHIMNEY SWEEP

- \* BRUSH & VACUUM
- \* CLEAN, RELIABLE SERVICE
- \* COVERING ALL S.E. CORNWALL
- \* DISCOUNT FOR MULTIPLE CHIMNEYS
- \* COWLS & GUARDS FITTED
- \* STOVES SERVICED



*Call  
Mark on:*

**01579 350762**  
**07773 462643**



# QUALIFIED RAYNOR MASSAGE THERAPIST

## RELAXING AND THERAPEUTIC MASSAGE TREATMENTS

Effective for many different types of chronic pain, sports injury, stress and tension related problems



CBD massage now available

### APPOINTMENTS AVAILABLE AT

LISKEARD THERAPY CENTRE  
LISKEARD PL14 3JB

THE WELLBEING CENTRE  
LISKEARD PL14 6AT

Contact : Tina North  
Phone : 07720 832322

Website : [massage-therapy-cornwall.co.uk](http://massage-therapy-cornwall.co.uk)



## R J Gardening & Handyman Services

All aspects of gardening and handyman work undertaken.

- ~Local and Trustworthy
- ~Hard Working
- ~Reliable and Experienced
- ~No job too small
- ~Competitive rates

Contact Raymond on:

07541 229064 or 01579 347622

[raymond\\_pearcegb@yahoo.com](mailto:raymond_pearcegb@yahoo.com)

Find us on Facebook.





**R&C**  
GROUNDWORKS  
& LANDSCAPES



Fencing  
Paths & Steps  
Turf & Astro turf  
Driveways  
Retaining walls  
Digger work  
Footings & foundations

Patios  
Rendering  
Decking

**And more**

Free no obligation quotes

**Call Rob on:**

**07518246666 or  
01579 641802**

## Window Cleaner

Also any upvc cleaned

i.e. fascias, gutters, etc.

gutters cleared & unblocked

Please phone Rob

**07709 053464**

## Window Cleaner

**Save Costly Energy!**



**SOLARTEC** Windows & Conservatories Ltd

**'A' Rated WINDOWS & DOORS  
at BEST PRICES EVER!**



Professionally fitted and finished by us with a  
10 year ins. guarantee.  
In all colours

FENSA  
REGISTERED

**NEW**

**FACTORY SHOP  
SUPPLY ONLY**

For all your windows, doors, conservatories,  
fascia, trims, guttering and sealants

**7-10 DAY TURN AROUND ON WINDOWS,  
DOORS and CONSERVATORIES**

**TEL: 01579 343425**

**FAX: 01579 344500**



WEBSITE: [www.solartecwindows.co.uk](http://www.solartecwindows.co.uk)

EMAIL: [sales@solartecwindows.co.uk](mailto:sales@solartecwindows.co.uk)

**KEEPING JOBS IN CORNWALL**

*PJR Garden Services*

**Phil Rule**

**All aspects of garden  
work - grass / hedge  
cutting, patios, fencing  
etc.**

**Mobile 07387 449004**



# Group Travel

Day Trips & Coach Holidays

Enterprise Park, Midway Road, Bodmin, Cornwall PL31 2FQ

## Coach Excursions & Tours 2022

12th March 2022  
24th - 29th April 2022  
30th April 2022  
6th May 2022  
19th May 2022  
8th - 9th July 2022  
17th - 21st Sept 2022

Crufts, The Worlds Greatest Dog Show  
Chester, Liverpool & the Beatles  
Tobys Garden Festival, Powderham  
Steam Train & Kents Cavern  
Cruise the English Riviera  
Hampton Court & Kew Gardens  
Llandudno, North Wales



Visit our website for all our  
excursions & tours and download a  
PDF version of our 2022 brochure.

Call: 01208 77989  
for bookings and brochure

website: [grouptravelcoachhire.co.uk](http://grouptravelcoachhire.co.uk)  
email: [grouptravelcornwall@btconnect.com](mailto:grouptravelcornwall@btconnect.com)  
facebook: [facebook.com/grouptravelcwl](https://www.facebook.com/grouptravelcwl)

## Bodmin MOT Centre

**01208 77989**

Garage Services  
MOT Testing Station  
Classes 4, 5 & 7  
Servicing & Repairs  
High Vehicles & Motorhomes  
Brake Test & Headlight Alignment  
Pre MOT Inspections  
Annual & Interim Vehicle Servicing  
~  
Commercial interim inspections available  
including brakes and lights  
~  
Helping you stay compliant

Bodmin MOT Centre at Group Travel  
Enterprise Park, Midway Road,  
Bodmin, Cornwall PL31 2FQ

## Martin Hoare – Local, Reliable, Competitive



WHEEL DIGGER FOR HIRE  
ALSO AVAILABE 'BREAKER'  
AND NEW CONCRETE  
'CRUSHER BUCKET'

ALL AT COMPETITIVE RATES

GROUND WORKS  
DRAINAGE  
NEW DRIVEWAYS  
SEPTIC TANKS &  
'SOAK AWAYS' INSTALLED



LASER LEVEL FOR HIRE  
QUOTES AVAILABLE



Phone 01579 363517

or

Mob 07863 291213



# INDEPENDENT FAMILY FUNERAL DIRECTORS

Supporting families to arrange funerals with sensitivity, dignity and care.

- Flexible, caring approach, tailor-making funerals to suit your needs and budget.
- Open and transparent, affordable pricing.
- Free bereavement support sessions, open to all in our community, first Wednesday of the month, 10am - 12pm.
- Prepayment Funeral Plans available

For details of our services and prices, visit our website.



**01579 362358 | [www.fdhallfunerals.co.uk](http://www.fdhallfunerals.co.uk)**



Avalennek, Caradon Town,  
Upton Cross, Liskeard  
Cornwall PL14 5AR  
Telephone 01579 363598  
Mobile 07901 538132  
[chrisrounsevell@tiscali.co.uk](mailto:chrisrounsevell@tiscali.co.uk)

## HOG ROAST EQUIPMENT HIRE AND MEAT SUPPLY

Hog Roasts For Those Special Occasions  
Self Catering or Hassle Free Service  
Everything done to your special requirements

**CHRIS ROUNSEVELL**  
**TRADITIONAL BUTCHER**

Come and visit our recently updated  
**Tile & Bathroom showroom** in PENSILVA

We offer a generous discount to all Pump Readers

Unit 24 Pensilva Ind Est, St Ive Road, Cornwall PL14 5RE 01579 362264

**CORNWALL TILE**  
CENTRE

Pensilva Showroom

Open	Mon - Fri	8.30am - 5pm
	Saturday	9.00am - 1pm

Tiles & Mosaics for:

Bathrooms & Kitchens Living Areas Conservatories  
Patios & External Areas Wet Rooms & Spas Swimming Pools  
& All Commercial Applications

 **atlas concorde**

[www.cornwalltile.com](http://www.cornwalltile.com)

**OPEN FOR RETAIL, TRADE & COMMERCIAL ENQUIRIES**



THE HOME OF WOOD

## BULK DISCOUNTS AVAILABLE ON OUR 30 YEAR SERVICE LIFE POSTS



**OUR GOLD TREATED STAKES AND POSTS ARE THE ONLY ONES AVAILABLE IN THE UK THAT ARE APPROVED BY THE WPA BENCHMARK FOR 30 YEAR SERVICE LIFE**

**For more  
informaton please  
contact one of our  
team**



**Bond Timber, Bake Sawmill, Trerulefoot, Saltash, Cornwall,**

**PL12 5BW**

**01503 240 308    [stacy@whbond.co.uk](mailto:stacy@whbond.co.uk)**

# Pensilva Stores

**Amazing Value**

**Premier**  
a great deal more from your local store

Mon-Sat. 7:00 AM. - 9:30 PM.  
Sunday 8.00 AM. - 9:30 PM.

- ✓ Fantastic Special Offers every month!!! (See store leaflets)
- ✓ Come and Check out our great deals on Wine, Beer and Spirits
- ✓ Local Produce: Homemade Butter and Clotted Cream, Meat from our local butcher
- ✓ Cornish Fresh Fruit and Vegetables
- ✓ Fresh Bread, Pasties and Cakes
- ✓ Take Away Coffee, tea and hot chocolate
- ✓ Newspapers and Magazines, Greeting Cards
- ✓ Paypoint, Lottery

**\* Free to use ATM \***

**\* Card Payment \***

**Friendly Staff + Service with a Smile !!!**

**Pensilva Stores is a family run business who have been serving local people and visitors for more than 21 years.**

Higher Road, Pensilva, Liskeard, Cornwall PL14 5NQ

Tel: 01579 362547

# MENDOLOGY

## Garage Door Specialist

- ☐ Repairs
- ☐ Servicing
- ☐ Installations


Out of hours service  
call Dave anytime 07974 442645

**MENDOLOGY** COMMERCIAL DOORS LTD  
www.mendologydoors.co.uk

**01579 363760**

# PensilvaCars

01579 363516

- ✓ MOTs Class 4
- ✓ Service
- ✓ Repair
- ✓ Tyres
- ✓ FREE Courtesy Car
- ✓ Car & Van Sales
- ✓ Diagnostics
- ✓ Air Conditioning
- ✓ 

**We have offered a supply, fit & balance of tyre service for 10 years at competitive prices.**

**Most of our tyres can be supplied the same day.**

**LOCAL RECOVERY £45.00**

**[www.pensilvacars.co.uk](http://www.pensilvacars.co.uk)**

**[pensilvacars@hotmail.co.uk](mailto:pensilvacars@hotmail.co.uk)**

We can service and repair your car to manufacturer specification, keeping your dealer warranty without main dealer expense.





# KEITH RICHARDS

## Motor Body Repair Specialists

A family run business with fully equipped & maintained workshops & a focus on  
Customer Care

- ♦ Motor Body Repair Specialist
- ♦ Mechanical Repairs
- ♦ Servicing to All Makes & Models
- ♦ Computer 4 Wheel Alignment
- ♦ 24 Hour Recovery Service
- ♦ Renovations & Re-sprays
- ♦ Member of RMI (Retail Motor Industry Federation)
- ♦ Latest Diagnostics (including specialists for VW, Audi, Seat, Skoda & Vauxhall)

With over 30 years' experience we aim to provide you with:- Value for Money -  
Friendly Service - Professional Approach - Expert Advice that you Can Trust  
(Visit our website for more details)

Pensilva Industrial Estate, St Ive Road, Pensilva, Liskeard, Cornwall PL14 5RE

Tel: 01579 362593

Email: [keith@keithrichardsmotorbody.co.uk](mailto:keith@keithrichardsmotorbody.co.uk)

Fax: 01579 363194

Website: [www.keithrichardsmotorbody.co.uk](http://www.keithrichardsmotorbody.co.uk)

Wm. Newham & Sons Est. 1835

Proprietor Robbie Savill AWCB

## **CHIMNEY SWEEPS & BLACKSMITHS**



**CHIMNEY SWEEPING**

**BIRD GUARDS, COWLS & POTS FITTED**

**CCTV INSPECTIONS & SURVEYS**

**STACK REPAIRS & REBUILDS**

**RIGID STEEL SYSTEMS ERECTED**

**STAINLESS STEEL and PUMPED CONCRETE  
CHIMNEY LINING**

**STOVES SUPPLIED, INSTALLED & REPAIRED**

**FIREPLACE ALTERATIONS & RENOVATIONS**

**FULL RANGE OF FIREPLACE FURNITURE  
made to order**

**01579 347777**

**need somewhere to stay ?  
between homes ?  
family/friends visiting ?**



**ideal for Pensilva  
& St.Ive**

**please call Jackie on  
01579 362216**

# **J. J. Child**

**Plumbing and heating engineer.**

**Oil appliance service, repair and breakdowns.**

**Over 30 years experience**

**Call John: 01579 362336 or 07837 921086**





# Pensilva & St Ive Post Office Service

**Pensilva:** Through the Café on the 1<sup>st</sup> floor of Millennium House

**Tuesdays:** 9am to 1pm.

**Wednesdays:** 9am to 12 noon.

**Fridays:** 9am to 12 noon

**The Millennium House  
coffee shop is also open on  
these mornings.**

.....  
**St Ive:** At St Ive Village Hall

**Wednesdays:** 10:30 to 11:30am

**Coincides with the St Ive  
Village Hall Coffee Morning**

## Saint Ive Parish tree-planting survey

Please let us know about any trees that you plant within the Parish. We will include them in our own survey and we will notify the Forest for Cornwall on your behalf, if appropriate.

Contact us by phone: 01579 383967, or by email:

parishpump@btconnect.com, or via the Saint Ive Parish

Climate Action Group Facebook page. Pictures very welcome.

