

Edition 480



**3-5
JUNE**



Queen's
**PLATINUM
JUBILEE**

The Parish Council would like to invite members of the community to an open meeting on
Thursday 4th November, 6:30pm at Millennium House
to help plan a weekend of activities, culminating in a Big Jubilee lunch on Sunday 5th June 2022. A carnival atmosphere for kids and adults to remember for years to come.

Disclaimer

The articles appearing in this magazine do not necessarily reflect the views of the Parish Council nor of the Parish Pump Editor.

Parish Councillors Telephone List

Alan Moss (chair)	01579 362064	Ivor Vaughan (vice-chair)	07979 934604
James Bruce	07411 192645	Marlene Carr	01579 362919
Martin Corney	01579 382450	Sandra Doe	01579 363096
Rosemary Farley	01579 384810	Nigel Gisby	01579 363096
Ron Greenhough	01579 363096	Tony Hodson	07973 536964
Nigel Libby	07968 891814	Paul Mann	01579 363757
Craig Vaughnley	01579 364083		

Meetings of St Ive Parish Council

Meetings are now being held when possible. Please see the Parish Council website for meeting dates, agendas and minutes.

<http://st-ive-parishcouncil.gov.uk/minutes-agendas/>



Devon & Cornwall Police
Building safer communities together

 **101**

Minicom 18001 101

Police Community Neighbourhood Office

Your Community Support Officer is PCSO Steve Edser 30173.

email: CIOsnbmliskeard@devonandcornwall.pnn.police.uk

To report a crime call 101 or go to www.devon-cornwall.police.uk

In an emergency call 999

Contact details for St. Ive Parish Council and for Millennium House

Address for correspondence: Millennium House, Century Square, Pensilva PL14 5NF

General Parish matters should be raised initially with the Parish Clerk, Jenny Hoskin, who will present them to the Parish Council.

Telephone: 01579 363096, email: stiveparish@btconnect.com

For accounts matters for the Parish and for Millennium House contact John Body, Finance Officer: 01579 362102, email: millenniumhouseadmin@btconnect.com

Millennium House enquiries and reservations: 01579 363096

email: millenniumhouse@btconnect.com.

On the web: Millennium House Website: www.cornwallvenue.com

Parish website: st-ive-parishcouncil.gov.uk Facebook: facebook.com/stiveparishcouncil

PARISH PUMP ADVERTISING COSTS - NOTICE OF INCREASE.

The prices for advertising in the Parish Pump will be increasing with effect from the January 2022 edition, the first increase since December 2012.

Orders placed before December 1, 2021 will be charged at the old prices.

Advertisers - please read the notice on page 29.

The new prices (including VAT at 20%) will be as follows:

Quarter page: £10:00 per month or £100:00 for 12 months.

Half Page: £20:00 per month or £200:00 for 12 months.

Full Page: £33:00 per month or £330:00 for 12 months.

Parish Pump Information and Contact Details

To contact the editor please email: parishpump@btconnect.com

or phone the Parish office: **01579 363096**.

Hardcopy submissions by post or by hand to the Parish office, Millennium House.

Softcopy submissions: By email to the editor in MS Word, MS Publisher, pdf, Tiff or jpeg. Please use A4 pages and minimum 16 point font as the Pump is initially produced in A4 size and reduced to an A5 booklet at the printing stage. If in doubt please contact the editor.

Current Advertising Prices including VAT at 20%

Per issue: Quarter Page £7.50 Half Page £15.00 Full Page £25.00

10% discount for 12 months paid in advance.

Bargain Corner free ads by email to the editor or drop off at the Parish Office.

Deadline for the Parish Pump is STRICTLY 15th of every month

From the Editor

I was very happy to hear that the Pensilva Village Hall is open again and accepting bookings. (More on pg 27.) Good luck to all concerned!

Reading the St Ive Gardening Club's report about the Forgotten Garden of Lewtrenchard (pg 12) got me wondering: what it is about Cornwall that makes it so neglectful of its old gardens? If we're not losing them, we're forgetting where we left them! We really ought to be more careful, I thought. But then the old cynic in me started wondering whether this was just a clever piece of marketing. Perhaps if a garden is lost, or forgotten, that makes potential visitors feel like intrepid pioneers, reclaiming a jewel that's lain hidden for generations.

Then... that got me thinking: could we use that idea to promote our own area? Not just one overgrown garden, but a whole series of them, clinging on desperately at the cliff-edge of existence! Travellers from far-flung places could walk the St Ive Parish Neglected Garden Trail. Wow! Who could resist that? The Abandoned Allotments of Attwood; The Bedraggled Backyards of Bicton; The Crumpled Cold-frame of Cutkive; The Decaying Decking of Dwellamill Wood; The Eroded Enclosures of East Park; The Forsaken Forecourts of Ford Close; The Gutted Gazebos of Gang; The Hidden Hanging-baskets of Haye; The Missing Meadows of Merryhue; The Potholed Patios of Parkfield; The Swampy Smallholdings of Slade; The Tangled Terraces of Tokenbury and the Weedy Window-boxes of Woolston. Just think, no more gardening! Let it all go to rack and ruin and the visitors will flock, at £20 a head! Call it 'rewilding' and it's even good for the planet!

Keep well - Joe

St Ive Village Hall

Gardening Club	1st Monday monthly 7:30pm	01579 382762
St Ive Snooker Club	Monday & Thursday 7:00pm	01579 382315 R Bunkum
Yoga	Tues 4:30-6.00 & 7:00-8:30pm	07947 785554
Post Office	Wednesday 10:30 - 11:30 am	
Coffee Morning	Wednesday 10:30 - 12:00	

St Ive Village Hall is available for hire, £3.50 per hour. Includes the use of the kitchen & electric (excluding wall heaters, which are on a £1 coin meter)

Contact Sue Sedgwick on 01579 383291

Hall meetings are now held quarterly on the third Monday of the month in January, April (includes the AGM at 7pm) July and October at 7.30.

CHAIRMAN'S REPORT - NOVEMBER 2021

In 2019 our Parish was given the use of an Electric Vehicle by AGEUK. With a slow start and the COVID restrictions, we finally got the support of volunteer drivers who, this year, drove people to their vaccination, doctor and hospital appointments. Recently, AGEUK informed us that they intend to redeploy the EV to an area with a greater need at the end of October.

The EV has shown over the last six months that there is a need for a transport system for those in our Parish who have mobility issues or who can no longer drive. With this in mind, the Parish Council has agreed to look into getting our own vehicle. For now, our volunteer drivers have agreed to continue using their own cars to transport those in need. I'd like to extend my thanks to them for their support. If you require transport, call Millennium House on 01579 363096.

In June next year, HRH Queen Elizabeth will celebrate her Platinum Jubilee. The Parish Council is inviting ideas from members of the Parish at an open meeting on the 4th November. See the flyer in this edition of the Pump.

We've had reports of children climbing onto the roof of Millennium House. This is extremely dangerous and I urge parents to talk to their children and explain the consequences if they were to fall.

'Plant a tree for Jubilee.' If there is anyone in our parish who has a spare field or plot of land, it would be nice for the children of the parish to plant a tree to commemorate the Queens Platinum Jubilee next year. They could monitor its progress over the years.

With bonfire night coming up, please stay safe and consider neighbours and animals who are nervous of the big bangs.

Alan Moss Parish Chairman

A reminder that this is the season for cutting back hedges that overhang pavements or highways. It is the responsibility of the owner or occupier of the land the hedges are on to carry out the necessary work. **St. Ive Parish Council.**

PARISH DEFIBRILATORS

Please make yourselves familiar with the location of the two defibrillators, one at Millennium House main entrance, the other at the Village Hall St Ive. They may save the life of a neighbour, friend, or family member.



MILLENNIUM HOUSE PENSILVA



ST IVE VILLAGE HALL

Opening times for the Mel Bar at Millennium House

Thursdays 5 pm – 11 pm, Fridays 5.30 pm – 11 pm, Saturdays 5 pm – 11pm
These times may change depending upon footfall.

We are looking for casual bar staff to help with functions and holidays, if you have experience and would like to apply, please contact MH 01579 363096.

Asmani Beads.co.uk



UNIQUE HANDMADE GLASS JEWELLERY
CREATED IN CORNWALL
GWEDDER MOR HA TEUDH - GLASS SEA & MOLTEN

Delivered in time
for Xmas.



Earrings - Pendants - Bracelets - Beads

made in Pensilva



<https://www.facebook.com/asmanibeadsglasslampwork/>

my shop is at: www.etsy.com/uk/shop/AsmaniBeads

Digital Community Hubs – Do You Need Them?

I've applied to set up a Digital Community Hub in St Ive Village Hall to overcome digital isolation in the village.

This will not only put WiFi into the Village Hall, but also provide free broadband internet access for community use - with laptops provided.

I know that not everyone has an internet connection at home and many people don't know how to use the internet, but would like to email friends and relatives or even talk to them with video, if only they had help. I plan to help you learn, if you'd like.

Other things that can potentially be done are:-

- Shop online
- Apply for jobs online
- Set up and manage your bank accounts online
- Order repeat prescriptions online
- Sign on to Universal Credit online
- Access online training to improve your skills
- Obtain online advice from Citizens Advice
- Get online support from your GP or medical specialist

Maybe we also need a Digital Community Hub in Millennium House? If so then we will need to find someone willing to give their time.

I need to know if there is a demand for Digital Community Hubs, so please contact me if you want to use this service and suggest the best times. I'll be at the Wednesday coffee mornings 10:30 to 12:00 in St Ive Village Hall or write me a note left at Millennium House. For those on the internet I'm all over Facebook and my email is martin.corney@btinternet.com.

Councillor Martin Corney

TEN PLUS YEARS OF WILDLIFE WATCHING

IN THE PARISH OF ST. IVE

Since moving to the Parish at the end of 2009, I have been photographing and recording the wildlife I see at my home on the edge of Pensilva on a daily basis. This month I thought I would talk about...

...the NUTHATCH



The nuthatch is a frequent, but not regular visitor to my feeders. Looking back over my records for the last 11 years, some months (like during the last few weeks) it is seen most days, and others not at all. It is seen less frequently over the summer when food is more plentiful. It is a striking bird, with its blue-grey upper body, pinky-buff underparts and a strong black stripe running in a straight line from its pointed beak and on through its eye. You are most likely to get nuthatches in your garden if you live close to woodland, or you may see them when out walking in our local woods. They are omnivores, feeding on insects, seeds and nuts. The following photos show nuthatches on both my seed and peanut feeders. They can be fairly aggressive, warning off other feeders and the other slightly smaller birds which are equipped with less pointed beaks will often perch on top waiting for them to finish before feeding themselves.



2015
On the
seed
feeder



2010
On the
peanut
feeder

As you can see in the second photo, nuthatches are very happy to be upside down and will happily run both up and down tree trunks. They get their name from the way in which they open hazel nuts. They will wedge a nut in a nook between branches and use their beak to hammer on it in the same spot until they crack it open. If you find a cracked hazel nutshell with a small v shaped notch along the cracked edge, it is likely to have been made by the beak of a nuthatch. When you are near trees in the hazel season, you may hear their steady tapping (not drumming like a woodpecker) on a nut. If you are lucky you may be able to follow the sound and see the nuthatch in action!


Nuthatches will use appropriately sized nest boxes, but usually nest in tree cavities or old woodpecker nests. They have been known to use mud to narrow the entrance to their nest, so improving protection from predators. Studies have shown that nuthatches rarely move far from the site where they were hatched.

The nuthatch population has been doing well since the 1970s, growing by an estimated 250%. However, unless the loss of woodland habitat is reversed, there could be problems in the future for this handsome bird.




HAPPY WILDLIFE WATCHING!

HILARY



Pentiddy Community Woodland Big Bramble Bash!

Sunday 14th November. 11am – 1pm




Despite regular use by people and dogs and efforts by some kind walkers to clear the brambles, the paths have been getting gradually narrower! So come armed with scythes, secateurs and strong gloves and help us to re-find the paths.

Some tools and gloves can be provided.
Supervised children very welcome. No dogs please.



Our regular workdays will follow in the new year.



Pensilva WI October Report

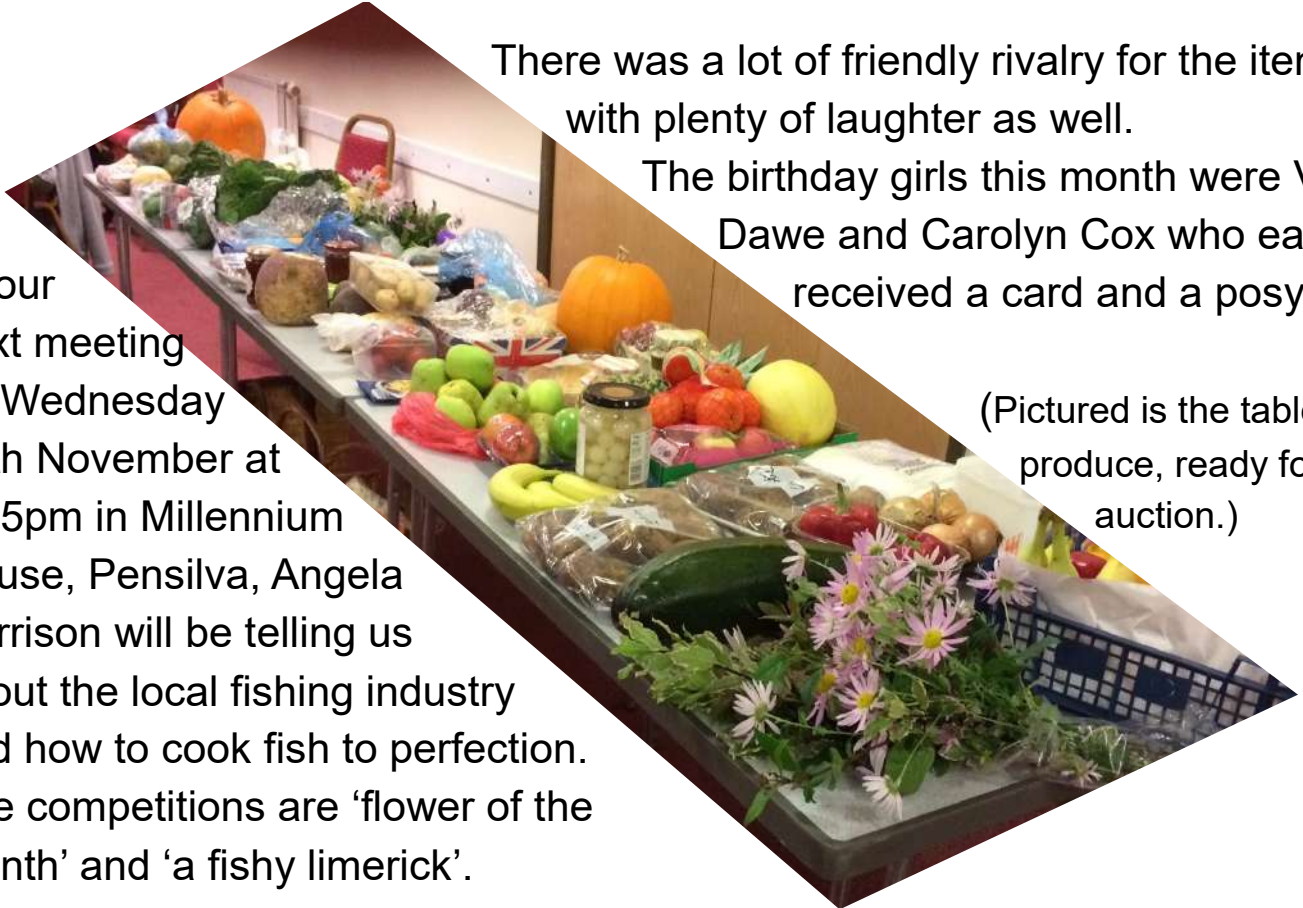
October already! But members of Pensilva WI don't dread the onset of Autumn and Winter, as it means they have the annual Harvest Supper and sale of produce to look forward to. The bring and share supper went down well as usual, and it was time for our auctioneer extraordinaire Verna to start the sale.

There was a lot of friendly rivalry for the items, with plenty of laughter as well.

The birthday girls this month were Verna Dawe and Carolyn Cox who each received a card and a posy.

At our next meeting on Wednesday 10th November at 7:15pm in Millennium House, Pensilva, Angela Harrison will be telling us about the local fishing industry and how to cook fish to perfection. The competitions are 'flower of the month' and 'a fishy limerick'.

(Pictured is the table of produce, ready for the auction.)



Debbie Hicks - Counselling and Psychotherapy

Caring, confidential counselling for all.

I work in a therapeutic relationship to help you understand yourself better.

I offer a warm, approachable, relaxed environment for you to untangle your thoughts and emotions.

More info on my website or by contacting me.

www.debbiehickscounselling.co.uk

Email: debbiehicks10@gmail.com

07851 133782



St Ive Gardening Club
Monday 4th October 2021

For the first time since the start of the pandemic we had our first indoor meeting and what a delight it was. The speaker for the evening was Terry Faull, a landscape historian, but the subject was a love story about a garden lost in time. The Forgotten Garden of Lewtrenchard, at Lewtrenchard Estate, was created by Sabine Baring-Gould for his wife Grace to encourage her to exercise when she developed rheumatoid arthritis. We heard how Sabine Baring-Gould appointed himself vicar of Lewtrenchard, had 15 children with Grace & was the most popular author in the country. Sabine travelled a lot in his life; he took inspiration from his travels & brought back many plants/trees to the garden. Sabine employed gardeners but they were called up at the start of WW1 & sadly Grace died in 1916. Sabine was so distraught he had no interest in anything & neglected the garden so it became overgrown. In 1919 Edward & Marian Baring-Gould (son & daughter in law of Sabine) moved into the Estate. Sabine died in 1954 & the garden, made out of love, was forgotten. In 1957 Edward Baring-Gould died, all his children live in USA. In 2006 a local group in Lewtrenchard found remains of the formal garden. Since 2006 many plants, shrubs & trees have been discovered; each year a new one is found by the volunteers. Some of these are uncommon, ancient varieties & one cannot even be identified by the experts at Kew Gardens.

The talk was a little different from the usual we have but it was fascinating to learn about a once forgotten garden, steeped in history, which is very much alive in the plants still thriving there.

If you'd like to know more visit forgottengarden.co.uk

Our next meeting is on Monday 1st November at 7:30pm in St Ive Village Hall with George Kestell about popular hedging plants.

Visitors are always welcome as are new members.

And finally ... Sam Cardew writes: "A very big thank you to Veronica for the many Gardening Club write-ups in the past. I certainly have a high standard to achieve."

Supporting Guiding & Scouting Activities in Pensilva
200 CLUB Draw Results for September 2021

1st No. 126 Mrs V McCarthey	2nd No. 49 Mrs J Phillips	3rd No. 90 Mrs P McCaig
--	--	--

Thank you for your support

Parish of St Ive Community Resilience Project becomes a charity.

We are now a registered charity. This means that we can apply for funds to take projects forward in our Parish. We already have some funding and donations pledged and will shortly apply for Lottery funding to run events and workshops next year.

We are just beginning, but we have big plans and would love for you to get involved and shape what we do. We aim to:

- create woodlands, community orchards and gardens
- create wildlife habitats to increase biodiversity
- provide information and offer training on sustainable living and community resilience
- bring people together to make our community stronger, happier and healthier.

Our next big project, thanks to the support of St Ive Parish Church, is to create a community garden in the Glebe Fields behind the Church. We are planning our first working party event for later this autumn. Look out for more information soon.

Join Us – Make your voice heard. We need all sorts of people with a wide range of skills and interests. Practical, hands-on people for jobs like tree planting, creating the community garden and setting up a repair cafe.

We need cake bakers to help feed hungry volunteers at our events!

We also need people who are good at event organisation, social media, website development, research and information-gathering, fundraising and finance.

Contact us on Tel 07768 130520 or Email: posicrp@gmail.com

Facebook: <https://www.facebook.com/posicrp>



News from The Growing Project

The Growing Project is already very well-known to many in our parish, if nothing else from the many articles it has contributed to the Parish Pump over the years. For those who are not so familiar with it, it is a Community Interest Company, founded in

2011 by the late Ruth Wilson, where local volunteers grow and sell organic fruit and veg for the local community. At the same time it provides a safe space for the helpers to enjoy a beautiful, peaceful and healing environment. About three or four years ago, The Growing Project inherited the one-acre site in Pensilva where it is located, but while the facilities there for growing produce are first class, the facilities for the people involved are very basic. So, The Growing Project has launched a crowdfunding initiative to help to finance the provision of electricity, running water, and some toilets. To find out more go to <https://chuffed.org/project/the-growing-project-fundraiser>

Pensilva Film Club

Well, what can I say – what a wonderful turnout for our first film after over 18 months. We were delighted to see many of our regulars return plus 9 completely new members. The movie – The Good Liar – was well-received and kept us all guessing with its various twists and turns as the full story revealed itself. Great leading roles by Helen Mirren and Ian McKellan were bound to provide some really good acting which was appreciated by all. Many thanks to those of you who came to support the evening and we look forward to seeing you, plus new members of course, at our next film night which is 19 November when we will be showing Summerland which stars Penelope Wilton and Tom Courtenay as well as younger, excellent actors. Doors open at 7pm for the film at 7.30. New members will need to complete forms on arrival please. Cost is £6 for membership (which includes the movie) or £3 for members. Hopefully the bar will also be open so come in time to buy a drink before we start.

See you there – all the best

Pensilva Film Club – part of Cfylm, Creative Kernow.



THE Growing Project PENSILVA

OUR NEWS

It is the time of the year when the harvest is rich of colourful vegetables and fruit. Look at our recent box which , we are pleased to say, more customers are enjoying. From the project you will find: an exciting range of squashes, courgettes, peppers, salad, kale and our delicious Cornish apples and exotic physalis also known as the Cape gooseberry. The physalis are grown in one of our tunnels.

Onions, garlic, salad have been planted.

The vegetable beds have been mulched and will be left to rest for the winter.

At Callington country market we have been successful in selling some of our vegetables.

We are pleased that some new people have joined our volunteer team.



PICK UP A VEG BOX BUY FROM THE STALL

All of our organic vegetables are either grown at The Growing Project in Pensilva or supplied by local organic growers.

You can buy directly from our outside stall, 7 days a week 24 hours a day - money in the letter box.

Or order a box from us: large box £11, or smaller box £8.50.

If ordering, please place your order by midday Monday.

Collect your box on Wednesdays, 1 pm to 1.30 pm, or we can deliver within 5 miles, £2 donation

Volunteers welcome!

We are looking at increasing our group of volunteers.

Do you have half a day to spare, to join a happy team, contribute your skills, learn new ones. Pop in on a Wednesday between 10 and 2 pm and find out more.

To order your box or
for more info



07854353865



@thegrowingprojectpensilva

Visit the Growing Project: Higher Road, Pensilva, PL14 5NH

BAKED POTATO



LUNCH

BRING and BUY STALL

St John's Church

Pensilva

Thursday 4th November

12.00 to 1.30 pm

Donations in aid of church funds

Need a listening ear?
Had a tough couple of years?



Listening Cafe

A safe place to talk about your thoughts, feelings and concerns

in the Wheal Phoenix Room at
Liskeard Public Hall

Saturday November 13th
from 2.30pm - 4.30pm

Free entry

Free tea, coffee and cake

For more information contact Anne Hughes

confortia.co.uk 01579 362068 annehugstara@gmail.com

T.K.Y.

Tribute Kids and Youth

To book a place contact: revbeccabell@gmail.com

Next Meetings

Sunday 7th & 21st November

Primary aged kids: 4.30 pm - 6.00 pm

Tea for all: 5.30 pm

Secondary aged youth: 5.30 pm - 7.30 pm

at

Menheniot Parish Church

The Tribute Cluster of Churches

ST IVE PARISH CHURCH

REMEMBRANCE SUNDAY

14TH NOVEMBER

10.45 am

2 Minutes Silence

Wreath laying at the memorial in the church



Roll of Honour



Service of Remembrance



Callington Branch

PENSILVA

Remembrance Sunday

14th November

10.45 am

**Wreath laying
and 2 minutes silence
at the village memorial.**



**in the
Millennium
House
Sports Hall**

Traditionally, Remembrance Sunday is an opportunity to remember the service and sacrifice of all those that have defended our freedoms and protected our way of life. We remember the Armed Forces and their families, the vital role played by the emergency services and those that have lost their lives as a result of conflict or terrorism.



Through this time of the pandemic many have given their lives and suffered in service of those who contracted Covid-19: doctors, nurses, NHS workers, the emergency services, care home staff



Key workers enabled life to go on: transport, food, utilities, mail, education

On 14th November, the members of St John's, Pensilva, invite you to remember and give thanks for all of these and loved ones who died.

Our church cannot accommodate the large congregation expected and maintain safe distancing. We are grateful to the Parish Council for generously allowing the use of the Millennium House sports hall for this community Remembrance and Thanksgiving Service.

Enquiries to & further details from Barry Hocking 01579 363686

Teatime Church



For pre-schoolers and their families

Sunday 14th November

3.45pm

St John's Church
Pensilva

Sharing a Bible Story

Playing Games

Singing and Praying Together

Eating Tea



Teatime Church will be held on the 2nd Sunday of each month
at one of the Tribute Cluster Churches

For more information contact: Rev Becca Bell
Rev Li Selman

revbeccabell@gmail.com
revliselman@icloud.com

Good Grief Cafés

Wednesdays 3-5pm

There is no right or wrong way to grieve. These free cafes aim to bring the bereaved community together, with time to share experiences & to bring comfort to one another in what can be an isolating and lonely time. There is no agenda, just free tea, cake, chat and friendship. All are welcome, and please use this as an opportunity to invite someone.

**Meeting at St John's
on
Wednesday 17th November
3.00 to 5.00 pm**

MONTHLY

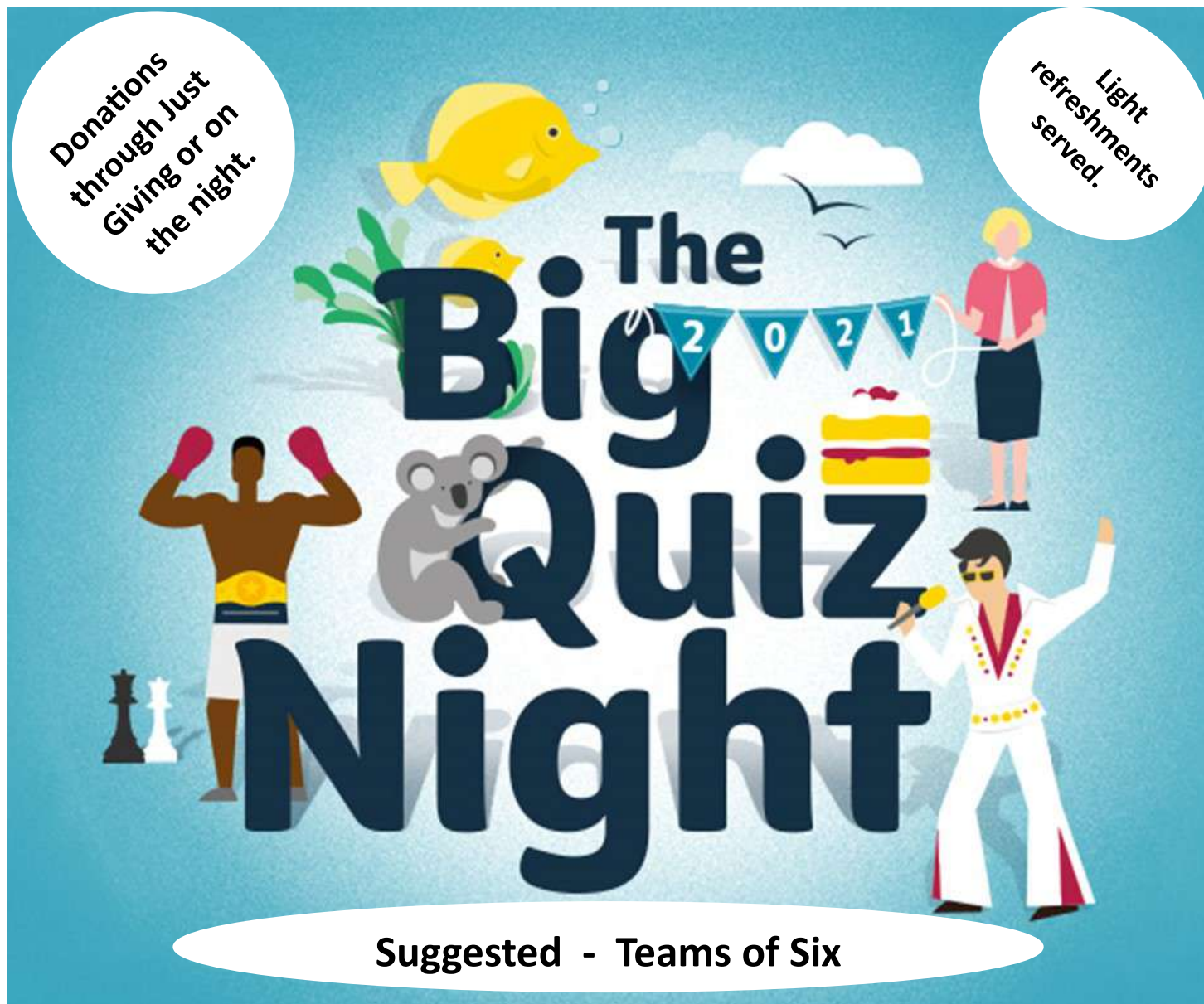
1st Wednesday of the month: St Martin's
Church Hall, Looe

2nd Wednesday Connon Chapel

3rd Wednesday St John's Pensilva

4th Wednesday Liskeard Methodist Church

(If there is a 5th Wednesday, there is no café)



IN AID OF **TEAR FUND** (reg'd charity no 265464)

SATURDAY 20TH NOVEMBER 2021

7.00 FOR 7.30pm FINISHING ABOUT 9PM

At RILLA MILL RETREAT CENTRE, RILLA MILL PL17 7NT

To book, contact Maxine Browne on 01579 362611 or
maxinecbrowne@aol.com

Facemasks and gloves available if required

PENSILVA MEMORY CAFE

Thursday 25th
November
2.00 to 4.00 pm



Contact Geoff
01579 362698

If you have memory problems or are a carer for somebody who does, and would like to meet others who understand your situation, then join us, here at
St John's Church, Pensilva

A photograph showing several hands working on various knitting projects. There are balls of yarn in different colors (yellow, green, blue, pink) and finished knitted items like a sock and a hat. The text 'knit and natter' is prominently displayed in the center.

knit and natter

Do you enjoy stitching, knitting, crocheting?

Join our friendly knit and natter group. Come and meet new friends and swap tips and ideas – all ages and abilities welcome!

Drop-in!

There is no charge for this activity but there is a Donation Box if you would like to make a cash contribution.

St John's Church
Pensilva

on the
last Tuesday
of the month

2.00

To

4.00 pm

Contact Kathleen
01579 363686

Tuesday
30th November

Regional sponsor:
 **The Exeter**



children's hospice
SOUTH WEST

Celebrating
30
years



Santas on the Run goes freestyle

eden project

Join us at
the Eden Project on
Sunday 5 December 2021

Sign up today
www.chsw.org.uk/santas

Or take part virtually, anywhere!



Raise festive
cheer in your
Christmas
gear!



Making the most of short and precious lives across the South West
Registered Charity No. 1003314



ST JOHN'S CHURCH, PENSILVA

Services for November 2021

Sunday 7 th	11am	Own Choice Morning Worship
	4pm	Circuit Service Tea at Polperro Methodist Church
Sunday 14 th	10.45	Remembrance Service, Millennium House Sports Hall
	3-5pm	Teatime Church (welcoming baptismal families)
Sunday 21 st	11am	Anglican Holy Communion
Sunday 28 th	11am	Morning Service with Rev Andy Day
	4pm	Food for Thought

Thur. 4th 12-1.30pm Baked Potato Community Lunch

Wed. 17th 3-5pm Good Grief Café

Thur. 25th 2-4pm Memory Café

Tues. 30th 2-4pm Knit and Natter

For further details of the services held in St John's, or if you know of any illness or need in the village, please ring Geoff Cox on 362698 or Frances on 363718.

St Ive Methodist Chapel

Services for November 2021

Sun 7th Nov	3 pm	Keith Mutton
Sun 14th Nov	10.45 am	United Remembrance Service
Sun 21st Nov	11:15am	United Service at St Ive Church
	3pm	Alan Libby
Sun 28th Nov	3pm	Rev. Iris Bray with Communion

The Chattermakers craft group will meet at the chapel fortnightly on Thursdays at 7:30pm. Contact Kathryn on 01579 382334 for more details.

Millennium House Coffee Shop Opening Hours

We are open Tuesdays, Wednesdays and Fridays, 9am to 1pm
(to coincide with Post Office days).

Our intention is to open more days and for more hours as soon as Covid regulations allow.

Covid precautions are in place at all times, providing a safe environment for our customers.

All Being Well

We are still open for three mornings a week. A maximum of six members can now attend at one time.

Opening hours:

Monday, Wednesday and Saturday, 9am to 1pm.

Maximum six members at a time for each of three slots within each session: 9:00 to 10:20, 10:20 to 11:40 and 11:40 to 13:00

Prior booking is essential

To book yourself in or for any enquiries, call in at the gym or telephone on **01579 363890**, during the opening hours listed above.

Over 20 years working in our local community to improve health, fitness and well being.

Badminton has restarted at Millennium House

Come and join our relaxed and friendly group.

Mon & Tue 7:30 - 9:30pm

For further info phone Nigel or Carol on 01579 363594 or 07885 798370

PENSILVA VILLAGE HALL

We are now open and back in business!

Anyone wishing to book the hall for meetings, birthday parties or fundraisers, please contact Peter or Jackie Browning on **01579 363212** or email **peterpensilva@gmail.com**

Please note that as well as hall rent there is a coin meter for



MOBILE LIBRARY



The County Mobile Library is back. It visits our area once a month on Fridays of "week 3" (not necessarily the 3rd Friday of the month).

Next visits: **Nov 19, Dec 12.**

Stops at The Victoria Inn, Pensilva, 10.25-10.45am; Quethiock bus stop 11.00 to 11.20am.



Struggling with Sight Loss?

iSight Cornwall offers practical help to people living with sight loss in Cornwall including:

Low Vision: Advice for low vision aids

Assistive Technology: Advice on products

Benefits Advice: Assistance to claim entitlements

Equipment Demonstration: Advice on gadgets

Social Clubs & Activities: Links to clubs & activities in the county

For more details Telephone 01872 261110 or visit

www.isightcornwall.org.uk

MILLENNIUM HOUSE

COMMUNITY CENTRE, AND DYNAMIC EVENT
VENUE IN THE HEART OF EAST CORNWALL



Conferencing

We have four meeting rooms for all your corporate needs.



Function Room

For parties, discos, or just larger events; with adjoining kitchen and bar.

Our Facilities

Sports Hall

For sports or larger events requiring a stage, the sports hall is our biggest venue.



Coffee Shop

Providing tea, coffee and cake. And for something stronger, there's the Mel, a licensed bar.



Enquire today:
01579 363096

www.millenniumhouse.org.uk
PRINCESS ROAD, PENSILVA, PL14 5NF

What Do We Do?

From wedding to wakes, kids or adults, corporate or community, we can host and cater your event. If you have an idea that's not covered here, get in touch and see if we're the right venue for you.

We're also home to:

- ✓ The Mel bar
- ✓ All Being Well Fitness Centre
- ✓ Post Office
- ✓ Sunflower Park kids playground
- ✓ Extensive playing fields
- ✓ Community Library

Recycling for Charity project updates.

October has been an extremely busy month, we promoted the project at Duchy College Freshers Fair, Launceston Town Hall Fun Palace, Callington New Outlook group, Delaware Pre School, and have plans for more talks in November. It's great to see all ages recycling more.

We sent Terracycle **43 BOXES this month, that's 462 kg** of mainly crisps & snacks & biscuit packets, Pringles tubes, bread bags, cheese wrappers, sweet packets, toothpaste tubes and brushes diverted from being binned and incinerated, which will now be processed and made into new products like benches, garden furniture, water-buts, kids toys etc. and raising funds for Kicks Count charity who aim to reduce UK still-births.

Plus a car full of CD's & DVD's was sent to Animal Free Research in Bude and we'll soon be sending off unwanted mobile phones, stamps, jewellery for Hill Pony Resources who have rescued ponies at Kelly Bray and around 60 ink jet cartridges which helps our project directly.

From the 1st of November the Pet Food programme is closing. The sponsors are no longer continuing this programme with Terracycle BUT you can take your pet pouches and flexible plastic pet food bags to TESCO stores and they will recycle them with carrier bags and other plastic packaging.



One programme closes and 2 others open. We can now accept Warburton's waxy bread bags and packaging from bread rolls, baps, bagels, crumpets, wraps, pittas, thins, brioche, croissants

The Recycling project trailer will be in **Pensilva** by St Johns church on **SATURDAY November 13th at 12:22 pm** then heading back to **Golberdon** to box up.

If you would like to join us and see the operation in our garage, please come along. Contact Ali for directions 07305 044049 or SHARE@south-hill.co.uk

If this date isn't convenient, arrange another time.

For details of all our locations and items we accept please visit

www.south-hill.co.uk/charity-recycling

THANK YOU FOR YOUR SUPPORT!

These traineeships are also available to young people in the Parish of St Ive.
Contact details in the blue box (bottom right) below.

Traineeships for 19-24 year olds in Looe



Finding it hard to secure a job or an Apprenticeship, but feel you need more guidance and experience? Have you thought of doing a Traineeship?

A Traineeship is a great opportunity for you to build up your skills and experience through a work placement to make you more employable.

Traineeships include Maths and English Functional Skills, Employability Skills and 70 hours voluntary work placement.

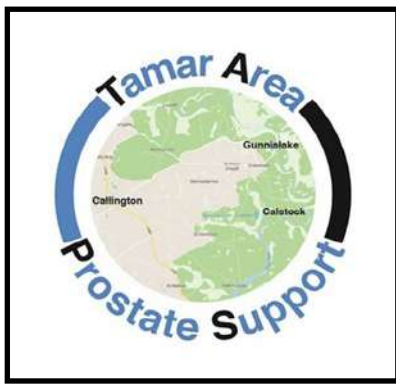
You will spend three days a week in our centre with two days per week on a work placement with a local employer.

The programme is delivered in small groups of up to 6 people in our central Looe learning centre.

To be eligible your highest existing qualifications must be at Level 3 or below.

New for 2021!
Opportunity for a 2 week work placement in Malaga, Spain.

For further information contact us on 01503 770752 or e-mail cornwallskills@wrecitd.co.uk



As with all local groups who meet regularly, COVID-19 knocked our plans sideways and we resorted to using Zoom. But with light finally on the horizon (better than at the end of the tunnel) we are hoping to restart our face-to-face meetings later this year, at Callington Town Hall.

In the meantime, we have created a new website which carries news of our Zoom meeting dates, speakers, copies of all editions of our newsletter "The Faucet", and how to make contact with the TAPS team, as well as other useful information.

If you are recently diagnosed and just want to have a chat about your treatment or your options, we encourage you to get in touch.

Find us at: -

Website: <https://www.tamarareaprostatesupport.org/>

Email: tapsinfo555@gmail.com

Phone: Chris on 01822-834797

TRADITIONAL STONE SERVICES

CLASSIC & TIMELESS STONE MASONRY AND LETTERING

MEMORIAL CLEANING

COMMISSIONS TAKEN

01579 363693 OR 07507 782282

Bargain Corner Free Ads up to £50

Ads are free for items up to £50. £5 charge for items over £50. Please ring the Parish Office on **01579 363096** or leave a note at Millennium House reception or email **parishpump@btconnect.com**.

*****Please let us know when your item has sold*****

Ladies Superdry Jacket. Size Med. Good condition. **01579 346982.**

7ft Christmas Tree. Regency fir style with berries and cones. Hinged branches. Condition as new. **£50. 07974 911685**

Gazaco **Child's Car Booster Seat** used once only. Brand new car seat protector for above. **£30.**

Exercise bike with program booklet **£50.**
Bayliss automatic greenhouse window opener. Brand new, never used. **£15.**
01579 362688

Free to good home, old but working **microwave oven.**
Lovely medium shade, solid wood oval **dining table and 4 chairs.** 5' long by 39" wide. Neutral coloured soft seats. Excellent condition. **£20. 01579 208836.**
Buyer collects from Callington.

Canon MG-2450 **printer.** Free to good home. **01579 347105.**

Villager Woodburner for sale. Width 23", Height 34". Double glass doors. VGC. Buyer collects **£250**
01579 362531 or **07379 588277**

Petrol lawn mower, approx 19 ins, in working order. **£30**
Crockpot slow cooker, hardly used, excellent condition. **£10**
01579 363573

Long handled garden fork in VGC. Ideal to prevent back strain when digging or removing shrubs. **£15.** Collection Only, **2 electric drills** in working order with chuck keys **£15** for the two.

Brand New **Vinyl Flooring** for kitchens, bathrooms or hallways 13ft long x 2ft 11 inches wide. Colour light to mid grey. **£25.**

Early 19C / late 18C **cast iron fireplace faceplate** in GC, 36" high x 24" wide. Ideal as a fire faceplate or ornament. **£35..**

Six coils of industrial steel cable now surplus to requirements **£35** the lot.
01579 384658 (Safe Distancing if reqd.)

2 short legged wetsuits. 1 x 38" chest and 1 x 42" chest. Used once. As new. **£20 each. 01579 362128.**

Canon IP2700 **Printer. £20**
Computer screen 19" £20.
Epson Perfection v350 **Scanner Photo £20**
Sony Revia 42" **TV. £45.**
All in working order. **01579 363200**

Set of 3 **suitcases,** red, vgc, Antler, **£40** ono. **07770 747353.** Pensilva area

Set of **Snow chains,** new and unused fit 14" to 19" rims, self adjusting. **£40**
Pensilva **01579 362207**

Please let us know when your item has sold

ADVERTISING SECTION

NOTICE TO ADVERTISERS

From St Ive Parish Council.

September 2021

Firstly, thank you for advertising in the St Ive Parish Pump. Your support enables us to provide a much-valued monthly newsletter to our parishioners. At the same time, the newsletter gives businesses in our area affordable access to a sizeable local market of grateful consumers.

For fifteen editions, between May 2020 and July 2021, the Pump was only available online, but we have been back in print since the August 2021 edition. We have not charged for adverts in the newsletter during the “online only” period. For advertisers with 12-month orders, we have extended the expiry date of your order by 15 months. For example, if the last month covered by your order was May 2020, we have extended it to August 2021. If the last month of your order was April 2021, we have extended it to July 2022. In short, most of you will have received fifteen months of free online advertising during the time we were not in print.

The Parish Council has revised the conditions for advertising in the Parish Pump. The changes relate to payments and prices:

New advertisers will be asked to pay in advance and their advertisements will not be included until the edition following the 15th day of the month in which payment is received. e.g. Ads paid for by 15th January can be included in the February edition.

Advertisers who are behind with their payments will have their adverts removed from subsequent editions until payments are brought up to date. To make it easier for you, we are adding a facility to pay by card over the phone.

Advertising prices will increase with effect from January 2022 as follows:

Advance notice of new advertising rates taking effect from the **January 2022** edition.

	<u>Net of VAT</u>		<u>Including VAT</u>	
	<u>1 month</u>	<u>12 months</u>	<u>1 month</u>	<u>12 months</u>
Quarter Page:	£ 8.33	£83.33	£10.00	£100.00
Half Page:	£ 16.67	£167.67	£20.00	£200.00
Full Page:	£ 27.50	£275.00	£33.00	£330.00

All advertising orders placed or renewed till the Dec 21 edition will be at the old rates. A few monthly advertisers were mistakenly billed at the higher rate for the Aug and/or Sep editions. The error will be rectified in the billing for the October edition. We apologise for the error, and for delays in billing you since we restarted printing.

Finally, we would like to point out that the last time we increased advertising rates was in December 2012, meaning that it will have been just over nine years since the last price increase. We all know what has happened to prices generally over that period!

Thank you, once again, for advertising in our newsletter. We hope that you will continue to do so, and we wish you every success with your business.

ADVERTISE HERE!

Prices increase from
January 2022

**Your last chance to buy
space at the old prices**

**One thousand copies per
month** distributed free of
charge to households in the
Parish of St Ive.



FOR ALL YOUR CELEBRATION NEEDS

Visit our shop: 12 Fore Street, Callington

Call us on 01579 384386

Find us on Facebook or visit our website:

www.victoriaeyton.co.uk

- Helium Balloons - Balloon Arches -
- Bespoke Balloon Designs -
- Personalised Balloons - Partyware -
- Huge selection of greetings cards -
- **Weddings, Parties and Corporate events catered for.**

DOG GROOMING

40 YEARS EXPERIENCE



**SMALL and MEDIUM Dogs
Groomed to Your Request**

**LISKEARD AREA
Inquiries Welcome**

**Call Patricia: 07517 658862
TO YOU OR TO ME**



Domestic Electrical
Property Maintenance
Interior & Exterior Work
Carpentry :: Decking
Kitchens :: Bathrooms
Wall & Floor Tiling
General Plumbing

MCCARTHY PROPERTY MAINTENANCE

**Electrical Safety
Register** incorporating
ELECTSA  ECA
Certification Ltd

**HIGHLY REGARDED LOCAL BUILDER
COMPETITIVELY PRICED
COVERING THE SOUTH WEST**

Contact Dominic

07968 599 675

01579 362 945

info@mccarthypropertymaintenance.co.uk

www.mccarthypropertymaintenance.co.uk

Westwood Garden Maintenance



Antony Watts

Grass Cutting, Clearance

Weeding, Turfing

Hedge Cutting

Patio Cleaning, Planting

Regular Visits / One-off Contracts

Residential & Commercial

FREE ESTIMATES

01579 362019 www.westwoodgm.co.uk 07952 094472

JPH Plastering and Rendering

Internal plastering

Internal and external rendering

Internal/external painting & decorating

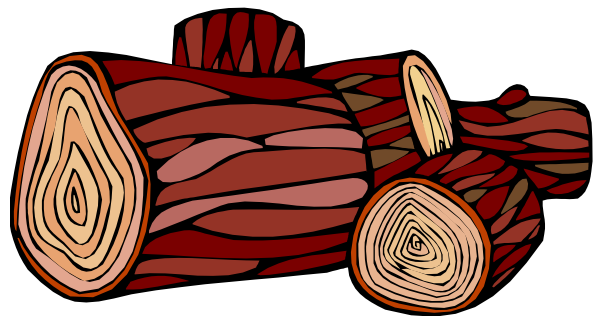
Property maintenance

Landscaping and land management

For estimates and no obligation quotes
contact Justin on:

07539 296799 or
info@just-in-stone.co.uk

SEASONED LOGS



MIXED LOAD

or

HARDWOOD

Tel. Jonathan

Mobile 07966 070725

or

01579 363157

PENROSS

Rosecraddoc Lodge Holiday Bungalows
(Between Pensilva & Liskeard)

Ideal for family & friends coming to visit!



Refurbished in 2018. Sleeps 4. Electric, heating, bedding & towels inc in rent. Patio. Free wi-fi. Follow us on Facebook.

Sorry no pets or smoking.

Contact Julie Tucker on 01579 362221 or

email penhargetfarm@gmail.com

for 15% discount

NICOLA GREENE

BSc (hons) Podiatry MChs

HPC Registered Chiropodist/Podiatrist

**Home Visit Practice treating all
your foot care needs:**

- Nail Cutting
- Corns and Calluses
- Thickened Nails
- Dry Cracked Skin
- Verrucae
- Foot Pain
- Diabetic Foot Assessments
- Wound Care

T: 01579 590027

M: 07786164205

E: nicki_greene@yahoo.com



Maintaining and preserving our
countryside for the benefit of all

Dry Stone Walls

Cobblestoning

Stone faced walls

Hedgelaying/steeping

Land management

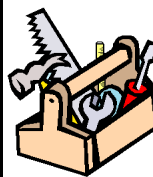
All aspects of Landscaping

Mobile: 07539 296799 or

Email: info@just-in-stone.co.uk

KEEP IT TIDY

General Property Maintenance
including Decorating, plus Electrical



**HONEST PRICE
for
QUALITY WORK.**



No Job Too Small

Kit Rickard

18 Higher Glen Park
Pensilva

Phone: 01579 363378

Mobile: 07855 699071

Email: KITKeepItTidy@hotmail.com

Debbie's Care Services
Tel. 0777 948 3230

Hello, my name is Debbie. I am a local lady who has been working in the community for over 30 years.

I provide the following services and more!

- Assisting bathing / showering
- Preparation of meals
- Cleaning / Shopping / Ironing
- Companionship / Friendship and emotional support
- Assisting with mobility
- Day, Evening and Night Care

MUST STEP
PODIATRY
HCPC Registered
podiatrist

Fully insured
NHS experience

Kind and caring

Home visits

All your footcare needs

Most areas covered

Tel: 07522 577012 or
07561 608296

DO YOU NEED A HELPING HAND?

Reliable, friendly,
experienced, mature
local resident offering
the following services:

Cleaning Ironing

Shopping Light Gardening Dog Walking

CRB/DBS checked and fully insured. Competitive rates.

Contact Jess: Telephone or text: 07934 764 327.

Email: homeangel77@yahoo.com. Find us on Facebook



Matt's Windows

**Repair of Windows, Doors
& Glass Unit Replacement**

T: 01579 641228

M: 07533 387368



PENSILVA GARDENER

**20 years experience in Garden
and Countryside skills.**

All garden work undertaken.

**Call Chris on 01579 383047
or 07792 936413**



KV Accounting Solutions



Local Accountant offering fixed fee accounting services

With over 20 years experience, I am a fully qualified, friendly, local accountant

- ✓ Annual Accounts for Sole Traders and Partnerships
- ✓ Book Keeping & Payroll
- ✓ Personal Tax Planning
- ✓ Company Accounts
- ✓ Business Support & Advice

- ✓ Self Assessment tax returns
- ✓ iXBRL tax filing
- ✓ Tax investigation Fees Insurance
- ✓ Company Secretarial work
- ✓ Tax calculations for Sole Traders and Partnerships

Kate Vaughnley FCCA - Chartered Certified Accountant
Website : www.kvaccountingsolutions.co.uk or Email : katevaughnley@gmail.com
Telephone : 01579 364083



Gas Services

NATURAL GAS - LPG - OIL

BOILER INSTALLATION

BOILER SERVICE & REPAIR

LONG WARRANTY FREE QUOTES

07859848288

bagasservices@outlook.com





Affordable Counselling

Caring, confidential,
non-judgemental

- Increased confidence and self esteem
- Help to cope better at difficult times
- Improved relationships
- Clarify confused thoughts & feelings
- Assertiveness
- Personal insight
- Improved emotional health
- Available for youth and adults

Isabelle McGarahan BA, PGCE
Dip in Therapeutic Counselling,
Accredited ACC, DBS cleared
www.im-counselling.org email:
isabelle@im-counselling.org
01579 344090/07857326229



P BRADLEY PLUMBING & HEATING

Email: info@pbplumbingheating.co.uk

Web: www.pbplumbingheating.co.uk

Facebook: @PDBradleyPlumbingandHeating

NO JOB TOO BIG OR SMALL

24hr Emergency Call Out

Based in Liskeard

Call Today 07598956760

"The complete bathroom installation service"

**New bathrooms fitted,
floor and wall tiling specialist**

General Plumbing including:

- Bathroom makeovers
- Dripping taps and burst pipes
- Pump and cylinder changes
- Radiator upgrades and additions
- Specialist in Leadwork
- No job too small
- No Call out charge



W. Hale *Plumbing*

Friendly Service, Quality Work

NO VAT

**City and Guilds Qualified
established 1983**

Call William Hale on

Tel: 01579 362132 Mobile: 07826 699719



Kiln Dried Firewood
Kindling & Firelighters
Eco Heatlogs
LPG Bottled Gas
Patio, BBQ & Camping Gas
Coal & Smokeless Fuel



0800 8021 223

sales@loganslogs.co.uk
www.loganslogs.co.uk

Heel 2 Toe Footcare

Tired Aching feet.

Corns, Hard skin, Verruca.

Fungal infected toe nails, or
toe nails require cutting.

Diabetic feet also treated and
regularly checked.

I can help to keep your feet
looking and feeling good.

I am a trained Foot Health
Practitioner to Diploma Level, fully
insured & DBS checked.

I can do home visits via an
appointment.

Call Penny: **07746 926146** for
further information. **Please note**
new number May 2021.

MARK FITCH CHIMNEY SWEEP

- * BRUSH & VACUUM
- * CLEAN, RELIABLE SERVICE
- * COVERING ALL S.E. CORNWALL
- * DISCOUNT FOR MULTIPLE CHIMNEYS
- * COWLS & GUARDS FITTED
- * STOVES SERVICED



*Call
Mark on:*

01579 350762
07773 462643



QUALIFIED RAYNOR MASSAGE THERAPIST

RELAXING AND THERAPEUTIC MASSAGE TREATMENTS

Effective for many different types of chronic pain, sports injury, stress and tension related problems



CBD massage now available

APPOINTMENTS AVAILABLE AT

LISKEARD THERAPY CENTRE
LISKEARD PL14 3JB

THE WELLBEING CENTRE
LISKEARD PL14 6AT

Contact : Tina North
Phone : 07720 832322

Website : massage-therapy-cornwall.co.uk



R J Gardening & Handyman Services

All aspects of gardening and handyman work undertaken.

- ~Local and Trustworthy
- ~Hard Working
- ~Reliable and Experienced
- ~No job too small
- ~Competitive rates

Contact Raymond on:

07541 229064 or 01579 347622

raymond_pearcegb@yahoo.com

Find us on Facebook.





R&C
GROUNDWORKS
& LANDSCAPES



Fencing
Paths & Steps
Turf & Astro turf
Driveways
Retaining walls
Digger work
Footings & foundations

Patios
Rendering
Decking

And more

Free no obligation quotes

Call Rob on:

**07518246666 or
01579 641802**

Window Cleaner

Also any upvc cleaned

i.e. fascias, gutters, etc.

gutters cleared & unblocked

Please phone Rob

07709 053464

Window Cleaner

Save Costly Energy!



SOLARTEC Windows & Conservatories Ltd

**'A' Rated WINDOWS & DOORS
at BEST PRICES EVER!**



Professionally fitted and finished by us with a
10 year ins. guarantee.
In all colours

FENSA
REGISTERED

NEW

**FACTORY SHOP
SUPPLY ONLY**

For all your windows, doors, conservatories,
fascia, trims, guttering and sealants

**7-10 DAY TURN AROUND ON WINDOWS,
DOORS and CONSERVATORIES**

TEL: 01579 343425

FAX: 01579 344500



WEBSITE: www.solartecwindows.co.uk

EMAIL: sales@solartecwindows.co.uk

KEEPING JOBS IN CORNWALL

PJR Garden Services

Phil Rule

**All aspects of garden
work - grass / hedge
cutting, patios, fencing
etc.**

Mobile 07387 449004



Group Travel

Day Trips & Coach Holidays

Enterprise Park, Midway Road, Bodmin, Cornwall PL31 2FQ

Coach Excursions & Tours 2021/2022

27th November 2021
19th December 2021
12th March 2022
24th - 29th April 2022
8th - 9th July 2022
17th - 21st Sept 2022

Exeter Christmas Market
Cornish Christmas Lights
Crafts, The Worlds Greatest Dog Show
Chester, Liverpool & the Beatles
Hampton Court & Kew Gardens
Llandudno, North Wales



Visit our website for all our
excursions & tours and download
a PDF version of our brochure.

Call: 01208 77989
for bookings and brochure

website: grouptravelcoachhire.co.uk
email: grouptravelcornwall@btconnect.com
facebook: facebook.com/grouptravelcwl

Bodmin MOT Centre

01208 77989

Garage Services
MOT Testing Station
Classes 4, 5 & 7
Servicing & Repairs
High Vehicles & Motorhomes
Brake Test & Headlight Alignment
Pre MOT Inspections
Annual & Interim Vehicle Servicing
~
Commercial interim inspections available
including brakes and lights
~
Helping you stay compliant

Bodmin MOT Centre at Group Travel
Enterprise Park, Midway Road,
Bodmin, Cornwall PL31 2FQ

Martin Hoare – Local, Reliable, Competitive



WHEEL DIGGER FOR HIRE
ALSO AVAILABE 'BREAKER'
AND NEW CONCRETE
'CRUSHER BUCKET'

ALL AT COMPETITIVE RATES

GROUND WORKS
DRAINAGE
NEW DRIVEWAYS
SEPTIC TANKS &
'SOAK AWAYS' INSTALLED



Phone 01579 363517

or

Mob 07863 291213



LASER LEVEL FOR HIRE
QUOTES AVAILABLE

INDEPENDENT FAMILY FUNERAL DIRECTORS

Supporting families to arrange funerals with sensitivity, dignity and care.

- Flexible, caring approach, tailor-making funerals to suit your needs and budget.
- Open and transparent, affordable pricing.
- Free bereavement support sessions, open to all in our community, first Wednesday of the month, 10am - 12pm.
- Prepayment Funeral Plans available

For details of our services and prices, visit our website.



01579 362358 | www.fdhallfunerals.co.uk



Avalennek, Caradon Town,
Upton Cross, Liskeard
Cornwall PL14 5AR
Telephone 01579 363598
Mobile 07901 538132
chrisrounsevell@tiscali.co.uk

HOG ROAST EQUIPMENT HIRE AND MEAT SUPPLY

Hog Roasts For Those Special Occasions
Self Catering or Hassle Free Service
Everything done to your special requirements

CHRIS ROUNSEVELL
TRADITIONAL BUTCHER

Come and visit our recently updated
Tile & Bathroom showroom in PENSILVA

We offer a generous discount to all Pump Readers

Unit 24 Pensilva Ind Est, St Ive Road, Cornwall PL14 5RE 01579 362264

CORNWALL TILE
CENTRE

Pensilva Showroom

Open	Mon - Fri	8.30am - 5pm
	Saturday	9.00am - 1pm

Tiles & Mosaics for:

Bathrooms & Kitchens Living Areas Conservatories
Patios & External Areas Wet Rooms & Spas Swimming Pools
& All Commercial Applications

 **atlas concorde**

www.cornwalltile.com

OPEN FOR RETAIL, TRADE & COMMERCIAL ENQUIRIES



THE HOME OF WOOD

BULK DISCOUNTS AVAILABLE ON OUR 30 YEAR SERVICE LIFE POSTS



OUR GOLD TREATED STAKES AND POSTS ARE THE ONLY ONES AVAILABLE IN THE UK THAT ARE APPROVED BY THE WPA BENCHMARK FOR 30 YEAR SERVICE LIFE

**For more
informaton please
contact one of our
team**



Bond Timber, Bake Sawmill, Trerulefoot, Saltash, Cornwall,

PL12 5BW

01503 240 308 stacy@whbond.co.uk

Pensilva Stores

Amazing Value

Premier
a great deal more from your local store

Mon-Sat. 7:00 AM. - 9:30 PM.
Sunday 8.00 AM. - 9:30 PM.

- ✓ Fantastic Special Offers every month!!! (See store leaflets)
- ✓ Come and Check out our great deals on Wine, Beer and Spirits
- ✓ Local Produce: Homemade Butter and Clotted Cream, Meat from our local butcher
- ✓ Cornish Fresh Fruit and Vegetables
- ✓ Fresh Bread, Pasties and Cakes
- ✓ Take Away Coffee, tea and hot chocolate
- ✓ Newspapers and Magazines, Greeting Cards
- ✓ Paypoint, Lottery

*** Free to use ATM ***

*** Card Payment ***

Friendly Staff + Service with a Smile !!!

Pensilva Stores is a family run business who have been serving local people and visitors for more than 21 years.

Higher Road, Pensilva, Liskeard, Cornwall PL14 5NQ

Tel: 01579 362547

MENDOLOGY

Garage Door Specialist

- ☐ Repairs
- ☐ Servicing
- ☐ Installations

Out of hours service
call Dave anytime 07974 442645

MENDOLOGY COMMERCIAL DOORS LTD
www.mendologydoors.co.uk

01579 363760

PensilvaCars

01579 363516

- ✓ MOTs Class 4
- ✓ Service
- ✓ Repair
- ✓ Tyres
- ✓ FREE Courtesy Car

- ✓ Car & Van Sales
- ✓ Diagnostics
- ✓ Air Conditioning



We have offered a supply, fit & balance of tyre service for 10 years at competitive prices.

Most of our tyres can be supplied the same day.

LOCAL RECOVERY £45.00

www.pensilvacars.co.uk

pensilvacars@hotmail.co.uk

We can service and repair your car to manufacturer specification, keeping your dealer warranty without main dealer expense.





KEITH RICHARDS

Motor Body Repair Specialists

A family run business with fully equipped & maintained workshops & a focus on
Customer Care

- ♦ **Motor Body Repair Specialist**
- ♦ **Mechanical Repairs**
- ♦ **Servicing to All Makes & Models**
- ♦ **Computer 4 Wheel Alignment**
- ♦ **24 Hour Recovery Service**
- ♦ **Renovations & Re-sprays**
- ♦ **Member of RMI (Retail Motor Industry Federation)**
- ♦ **Latest Diagnostics (including specialists for VW, Audi, Seat, Skoda & Vauxhall)**

With over 30 years' experience we aim to provide you with:- Value for Money -
Friendly Service - Professional Approach - Expert Advice that you Can Trust
(Visit our website for more details)

Pensilva Industrial Estate, St Ive Road, Pensilva, Liskeard, Cornwall PL14 5RE

Tel: 01579 362593

Email: keith@keithrichardsmotorbody.co.uk

Fax: 01579 363194

Website: www.keithrichardsmotorbody.co.uk

Wm. Newham & Sons *Est. 1835*

Proprietor Robbie Savill AWCB

CHIMNEY SWEEPS & BLACKSMITHS



CHIMNEY SWEEPING

BIRD GUARDS, COWLS & POTS FITTED

CCTV INSPECTIONS & SURVEYS

STACK REPAIRS & REBUILDS

RIGID STEEL SYSTEMS ERECTED

**STAINLESS STEEL and PUMPED CONCRETE
CHIMNEY LINING**

STOVES SUPPLIED, INSTALLED & REPAIRED

FIREPLACE ALTERATIONS & RENOVATIONS

**FULL RANGE OF FIREPLACE FURNITURE
made to order**

01579 347777

**need somewhere to stay ?
between homes ?
family/friends visiting ?**



**ideal for Pensilva
& St.Ive**

**please call Jackie on
01579 362216**

J. J. Child

Plumbing and heating engineer.

Oil appliance service, repair and breakdowns.

Over 30 years experience

Call John: 01579 362336 or 07837 921086





Pensilva & St Ive Post Office Service

Pensilva: Through the Café on the 1st floor of Millennium House

Tuesdays: 9am to 1pm.

Wednesdays: 9am to 12 noon.

Fridays: 9am to 12 noon

**The Millennium House
coffee shop is also open on
these mornings.**

.....
St Ive: At St Ive Village Hall

Wednesdays: 10:30 to 11:30am

**Coincides with the St Ive
Village Hall Coffee Morning**

Saint Ive Parish tree-planting survey

Please let us know about any trees that you plant within the Parish. We will include them in our own survey and we will notify the Forest for Cornwall on your behalf, if appropriate.

Contact us by phone: 01579 383967, or by email:

parishpump@btconnect.com, or via the Saint Ive Parish Climate Action Group Facebook page. Pictures very welcome.

