

THE PARISH PUMP



October 2021
Edition 479



The Newsletter for the Parish of St Ives



Flower arrangements created by members of the Pensilva WI, on their return to Millennium House.

Disclaimer

The articles appearing in this magazine do not necessarily reflect the views of the Parish Council nor of the Parish Pump Editor.

Parish Councillors Telephone List

Alan Moss (chair)	01579 362064	Ivor Vaughan (vice-chair)	07979 934604
James Bruce	07411 192645	Marlene Carr	01579 362919
Martin Corney	01579 382450	Sandra Doe	01579 363096
Rosemary Farley	01579 384810	Nigel Gisby	01579 363096
Ron Greenhough	01579 363096	Tony Hodson	07973 536964
Nigel Libby	07968 891814	Paul Mann	01579 363757
Craig Vaughnley	01579 364083		

Meetings of St Ive Parish Council

Meetings are now being held when possible. Please see the Parish Council website for meeting dates, agendas and minutes.

<http://st-ive-parishcouncil.gov.uk/minutes-agendas/>



Devon & Cornwall Police
Building safer communities together

 **101**

Minicom 18001 101

Police Community Neighbourhood Office

Your Community Support Officer is PCSO Steve Edser 30173.

email: CIOSNBMLiskeard@devonandcornwall.pnn.police.uk

To report a crime call 101 or go to www.devon-cornwall.police.uk

In an emergency call 999

Contact details for St. Ive Parish Council and for Millennium House

Address for correspondence: Millennium House, Century Square, Pensilva PL14 5NF

General Parish matters should be raised initially with the Parish Clerk, Jenny Hoskin, who will present them to the Parish Council.

Telephone: 01579 363096, email: stiveparish@btconnect.com

For accounts matters for the Parish and for Millennium House contact John Body, Finance Officer: 01579 362102, email: millenniumhouseadmin@btconnect.com

Millennium House enquiries and reservations: 01579 363096

email: millenniumhouse@btconnect.com.

On the web: Millennium House Website: www.cornwallvenue.com

Parish website: st-ive-parishcouncil.gov.uk Facebook: facebook.com/stiveparishcouncil

PARISH PUMP ADVERTISING COSTS - NOTICE OF INCREASE.

The prices for advertising in the Parish Pump will be increasing with effect from the January 2022 edition, the first increase since December 2012.

Orders placed before December 1, 2021 will be charged at the old prices.

Advertisers - please read the notice on page 29.

The new prices (including VAT at 20% will be as follows:

Quarter page: £10:00 per month or £100:00 for 12 months.

Half Page: £20:00 per month or £200:00 for 12 months.

Full Page: £33:00 per month or £330:00 for 12 months.

Parish Pump Information and Contact Details

To contact the editor please email: parishpump@btconnect.com

or phone the Parish office: **01579 363096.**

Hardcopy submissions by post or by hand to the Parish office, Millennium House.

Softcopy submissions: By email to the editor in MS Word, MS Publisher, pdf, Tiff or jpeg. Please use A4 pages and minimum 16 point font as the Pump is initially produced in A4 size and reduced to an A5 booklet at the printing stage. If in doubt please contact the editor.

Current Advertising Prices including VAT at 20%

Per issue: Quarter Page £7.50 Half Page £15.00 Full Page £25.00

10% discount for 12 months paid in advance.

Bargain Corner free ads by email to the editor or drop off at the Parish Office.

Deadline for the Parish Pump is STRICTLY 15th of every month

From the Editor

The East Cornwall Skittles league is starting up again, after a long layoff due to the pandemic. Several teams have dropped out altogether and we are down to two divisions rather than three (there were four divisions not so long ago). It all feels a bit strange! It wouldn't take much for entire teams to have to miss games because someone has been in contact with a Covid-positive contact. The 2019-20 season was never completed; it was due to finish just a couple or so weeks after the first lockdown happened. I have a feeling that there will be plenty of incident before this 2021-22 season is over! Sorry to go on about skittles, but it isn't just about that, is it? For example, the play Poltroon at Sterts finally managed to complete its run at the end of September, after two false starts. For the foreseeable future, anything from primary school lessons, through trips to the supermarket, to doctor's appointments, are all quite likely to be disrupted. Anyway, from a personal point of view, I'm happy that skittles is back, and at the same time, I'm not getting my hopes up too much.

Keep well - Joe

St Ive Village Hall

Gardening Club	1st Monday monthly 7:30pm	01579 382762
St Ive Snooker Club	Monday & Thursday 7:00pm	01579 382315 R Bunkum
Yoga	Tuesdays 7:00 to 8:30pm	07947 785554
Post Office	Wednesday 10:30 - 11:30 am	
Coffee Morning	Wednesday 10:30 - 12:00	

St Ive Village Hall is available for hire, £3.50 per hour. Includes the use of the kitchen & electric (excluding wall heaters, which are on a £1 coin meter)

Contact Sue Sedgwick on 01579 383291

Hall meetings will now be held quarterly on the second Tuesday of the month in January, April (includes AGM), July and October.

CHAIRMANS REPORT - OCTOBER 2021

As we move into the Autumn, it seems that September has been the warmest for a long time, up by 3 degrees. Walking around Siblyback Lake the other day, remnants of some of the original farm walls have been exposed, I'm sure it will refill over the next few months.

The Millennium House roof is slowly coming to a conclusion and is looking good. MH is getting new life and we can get rid of the buckets which have been catching the rainwater over the years. Bookings are slowly returning to previous levels, also with some new customers and new interests.

The Vaccination Booster Program starts again on the 7th October, using MH. We will endeavour to keep disruption to a minimum using lessons learnt last time. The Parish Council have recently obtained funding to replace the Function Room flooring; obviously work will have to fit in with the Boosters and customers.

I must apologise for the stop-start opening of the Mel Bar. Getting all the ducks in line was more difficult than we had anticipated. After 12 months closed the bar needed a deep clean; I'd like to thank the MH staff and volunteers who got stuck in. Ross Wheddon agreed to become our DPS, (Dedicated Premises Supervisor), and we had to submit his name to Cornwall Council and the police for acceptance, I'd like to thank Ross for coming forward.

The Coffee Shop has grown to be a warm and welcoming hub for the community; its success is down to the volunteers who run it with enthusiasm and dedication. Open Tuesday, Wednesday and Fridays 9 am to 1 pm.

The next Parish Council meeting is on the 11th October, please come along and meet your council. If you have any questions, we'll endeavour to answer them, Don't rely on social media. We don't have horns.

Alan Moss Parish Chairman

Digital Community Hubs – Do You Need Them?

I've applied to set up a Digital Community Hub in St Ive Village Hall to overcome digital isolation in the village.

This will not only put WiFi into the Village Hall, but also provide free broadband internet access for community use - with laptops provided.

I know that not everyone has an internet connection at home and many people don't know how to use the internet, but would like to email friends and relatives or even talk to them with video, if only they had help. I plan to help you learn, if you'd like.

Other things that can potentially be done are:-

- Shop online
- Apply for jobs online
- Set up and manage your bank accounts online
- Order repeat prescriptions online
- Sign on to Universal Credit online
- Access online training to improve your skills
- Obtain online advice from Citizens Advice
- Get online support from your GP or medical specialist

Maybe we also need a Digital Community Hub in Millennium House? If so then we will need to find someone willing to give their time.

I need to know if there is a demand for Digital Community Hubs, so please contact me if you want to use this service and suggest the best times. I'll be at the Wednesday coffee mornings 10:30 to 12:00 in St Ive Village Hall or write me a note left at Millennium House. For those on the internet I'm all over Facebook and my email is martin.corney@btinternet.com.

Councillor Martin Corney

Pensilva WI September Report

For our first meeting in Millennium House in 18 months, a large group of members was shown how to create simple flower arrangements for the home by our very own Cherry, Frances, Jean and Verna. Cherry showed us how to create sugarcraft roses, which could then be used as a display, whilst Frances, Jean and Verna used a variety of flowers and foliage to create stunning arrangements, some using hedgerow items which was very effective. What a talented group Pensilva WI is!

Various events to be held were outlined showing that life is starting to get back to some sort of normality.

There were four birthday girls this month, Rachel Palmer, Irene Elliott, Jennifer Kelly and Mary Lake who all received cards and lovely posies.

Competition results were – Flower of the month 1st Jenny Rendle, 2nd Cherry Woodhouse, 3rd Pauline Miller. Home-made craft item with a floral theme 1st Alison Willis, 2nd Cherry Woodhouse, 3rd Pauline Miller.

The October meeting is our annual Harvest Supper and sale of produce, family and friends most welcome.

St Ive and District Gardening Association

We enjoyed a very interesting and informative evening when we visited Looe Valley Vineyard for our September meeting. Having first told us how he cultivates the different varieties of vine, Charles Boney then let our members loose on his vines, armed with a variety of cutting tools, to try their hand at pruning! The evening concluded with the wine tasting when we learned the five ways to judge a wine before drinking it.



Our next meeting, on Monday 4th October, will be held in St Ive village hall when Terry Faull will give an illustrated talk about The Forgotten Garden at Lewtrenchard. Our meetings start at 7.30pm and visitors are always welcome.

LOCAL ENVIRONMENTAL AND RESILIENCE GROUPS MEET TO DISCUSS CO-OPERATION.

On the evening of September 20th, under a beautiful full moon and around a blazing wood fire, groups from St Ive and Pensilva who are working in different ways to address the climate and ecological emergency and build community resilience, came together to talk. Represented were: the Parish of St Ive Community Resilience Project, the Growing Project, Tregovenek Community Farm*, Pentiddy Woodlands and St Ive Parish Council. After a round of introductions, each group shared the background of their project, their aims, current focus and challenges.

There was a collective will to build community sustainability, resilience and support through bringing people together and improving the wellbeing of people and the environment. Common challenges include reaching and involving enough people.

There were a range of suggestions but the main one that was agreed was a regular gathering of all community groups whose focus is on facing these issues, and interested individuals from the local community. One project could host each gathering which could include practical work, tours and support/design work depending on the needs of each project at the time. The gatherings could include:

- A time for each project to update on their progress/challenges.
- General networking.
- Exploring a particular theme such as agriculture, education, energy...
- A seasonal celebration with seasonal food.

The proposed gatherings are:

Autumn 2021 - The Growing Project work day and solution finding.

Winter 2021 - Pentiddy Community Woodland work day.

Spring 2022 - St Ive Community Garden seed swap and tour.

Summer 2022 - Tregovenek open day.

These gatherings will be open to everyone! Dates and details to be confirmed.

Watch this space!

A big thank you to all who gave their time and energy to the evening. It was wonderful and we are excited about the magic that will happen as we work together! If you would like to get involved in any of the projects listed, we'd love to hear from you:

The Growing Project - growingprojectpensilva@gmail.com

Tregovenek - pensilvacommunityfarm@gmail.com

The Parish of St Ive Community Resilience Project - posicrp@gmail.com

Pentiddy Woods and Pentiddy Community Woodland - mail@pentiddy.co.uk

** (Tregovenek, which means 'Place of Hope' in Cornish, is the new name for the Pensilva Community Farm project, which was introduced in previous editions. Ed.)*

RECYCLING FOR CHARITY



From Nov 1st 2021 the pet programme is closing, so no more pouches or bags from cats, dogs, hamsters, fish. **We can only accept Lily Kitchen brand.**

You can drop off your items to the recycling trailer at:

Liskeard Cattle Market Sat. Oct. 9th 10 -1pm,

Pensilva by St Johns church Sat. Oct. 9th 1:20 pm,

Callington B&M car park Wed. Oct. 6th 11:15 – 12noon, or

anytime at Green Meadows Golberdon or Upton Cross parish hall car park Blue Bins.

For details of other locations and items accepted visit

www.south-hill.co.uk/charity-recycling

Or contact SHARE@south-hill.co.uk or by phone 07305 044 049

THANK YOU for your support, Ali Humphreys, Project Lead

Supporting Guiding & Scouting Activities in Pensilva 200 CLUB Draw Results for August 2021

**1st No. 183
Mrs Jackson**

**2nd No. 143
Ms J Ransley**

**3rd No. 150
Miss C Wildman**

Thank you for your support

Debbie Hicks - Counselling and Psychotherapy

Caring, confidential counselling for all.

I work in a therapeutic relationship to help you understand yourself better.

I offer a warm, approachable, relaxed environment for you to untangle your thoughts and emotions.

More info on my website or by contacting me.

www.debbiehickscounselling.co.uk

Email: debbiehicks10@gmail.com

07851 133782



TEN PLUS YEARS OF WILDLIFE WATCHING IN THE PARISH OF ST. IVE

Since moving to the Parish at the end of 2009, I have been photographing and recording the wildlife I see at my home on the edge of Pensilva on a daily basis. This month I thought I would talk about one of our less common birds...

...the **MARSH TIT**

The marsh tit was a bird I had not been aware of until moving to Pensilva. I first recorded it in October 2010 and suspect that I may have seen it before this, but mistaken it for a coal tit, a bird which I am sure many of you will be familiar with. The most obvious difference is that the coal tit's black cap splits at the back of the neck. Whereas the marsh tit's is solid. More subtly, the marsh tit has a two tone sleek grey body, whilst the slightly fluffier coal tit has lines of white dots on its wings and a buff lower body. The coal tit also has a much larger black bib than the marsh tit.



Marsh
Tit



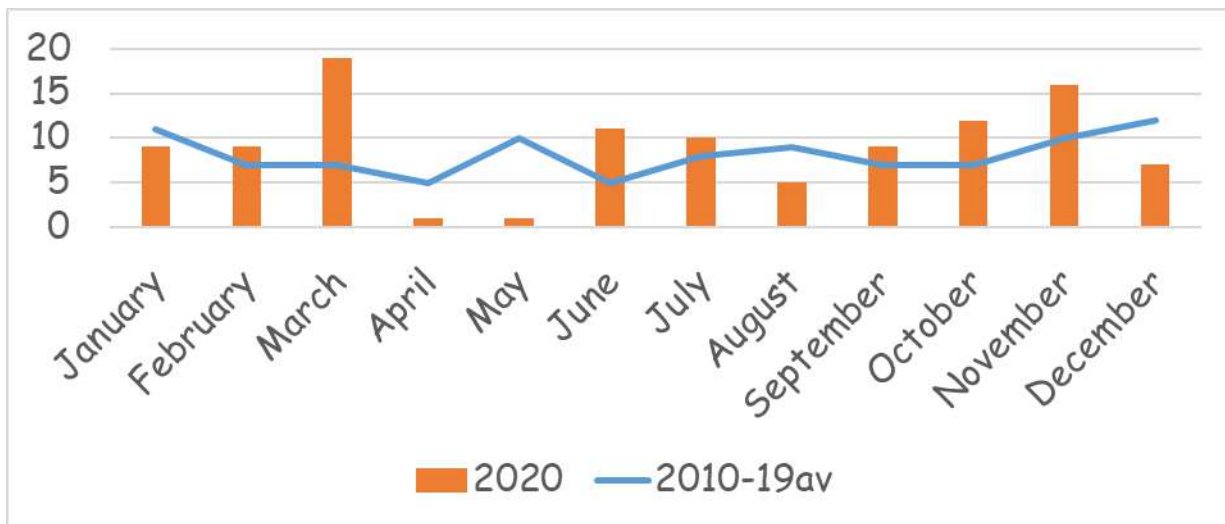
Coal
Tit

To add to my confusion at this early stage, another bird called a willow tit is almost identical and indeed was only fairly recently recognised as a separate species. At first I wavered between the two and still find it impossible to distinguish between them visually. Two things informed me that ours was a marsh tit. Firstly learning from locals with more knowledge than me that this was what to expect in this area. Secondly willow tits make holes in muddy banks to nest in whilst marsh tits nest in tree holes. My work with dormouse

monitoring led me to find our marsh tits nesting in the boxes as were other species of tree hole nesting tits. Additionally, researching the literature indicates that the two species territories rarely overlap.

Overall, the marsh tit is a frequent visitor to both our seed and fat ball feeders. Its appearance is spasmodic with periods when it is seen daily and those when it is absent for several weeks.

No. of Days Sighted Per Month in 2020, Compared to the 2010-2019 Average



However, this year there were no sightings from February to June. It was a relief to see them again in July and there have been some sightings in each month since.

The marsh tit is an efficient feeder, coming in taking a seed and returning quickly to the safety of the shrubs at the edge of the garden. This makes it quite difficult to photograph, but here are a few:-



HAPPY WILDLIFE WATCHING!
HILARY

OUR NEWS

The harvest full moon has brightened our night sky on the Autumn solstice. We hope you have enjoyed it as much as we have.

We have been doing a lot of gathering of vegetables for the boxes and the stall: chard, spinach, salads, leeks, peppers, aubergines, cucumbers, courgettes, tomatoes, and loofah (see picture). The autumn squashes are growing well ready to pick next month.

We are very grateful to Ashley Gilbert Pearce who has very kindly dug trenches where it was needed for our utilities, water and electricity.

Some members of the project attended the positive meeting for the new Community Farm project Pasadema, next door to Pentiddy. The Growing Project is happy to be part of it.



PICK UP A VEG BOX BUY FROM THE STALL

All of our organic vegetables are either grown at The Growing Project in Pensilva or supplied by local organic growers.

You can buy directly from our outside stall, 7 days a week 24 hours a day - money in the letter box.

Or order a box from us: large box £11, or smaller box £8.50.

If ordering, please place your order by midday Monday. Collect your box on Wednesdays, 1 pm to 1.30 pm, or we can deliver within 5 miles, £2 donation

Volunteers welcome!

We are looking at increasing our group of volunteers. Do you have half a day to spare, to join a happy team, contribute your skills, learn new ones. Pop in on a Wednesday between 10 and 2 pm and find out more.

To order your box or for more info



07854353865



@thegrowingprojectpensilva

Visit the Growing Project: Higher Road, Pensilva, PL14 5NH

BAKED POTATO



LUNCH

BRING and BUY STALL

St John's Church

Pensilva

Thursday 7th October

12.00 to 1.30 pm

Donations in aid of church funds

Good Grief Cafés

Wednesdays 3-5pm

There is no right or wrong way to grieve. These free cafes aim to bring the bereaved community together, with time to share experiences & to bring comfort to one another in what can be an isolating and lonely time. There is no agenda, just free tea, cake, chat and friendship. All are welcome, and please use this as an opportunity to invite someone.

**Meeting at St John's
on
Wednesday 20th October
3.00 to 5.00 pm**

MONTHLY

1st Wednesday of the month: St Martin's
Church Hall, Looe

2nd Wednesday Connon Chapel

3rd Wednesday St John's Pensilva

4th Wednesday Liskeard Methodist Church

(If there is a 5th Wednesday, there is no café)

Pensilva Film Club

Finally folks, the news you've obviously all been waiting for, and that is that Film Club restarts this month on 22 October with a showing of *The Good Liar*. As usual, doors will open at 7pm with the film starting at 7.30. We are advising that social distancing guidelines are followed but people are free to move chairs to sit with friends if they feel comfortable. Please, however, respect other people's space. Again, although there is no legal requirement to wear a face covering, we welcome people to continue to do so if that makes them feel safer. It would be appreciated if face coverings could be worn during the signing-in process as distancing will not really be an option at that point.

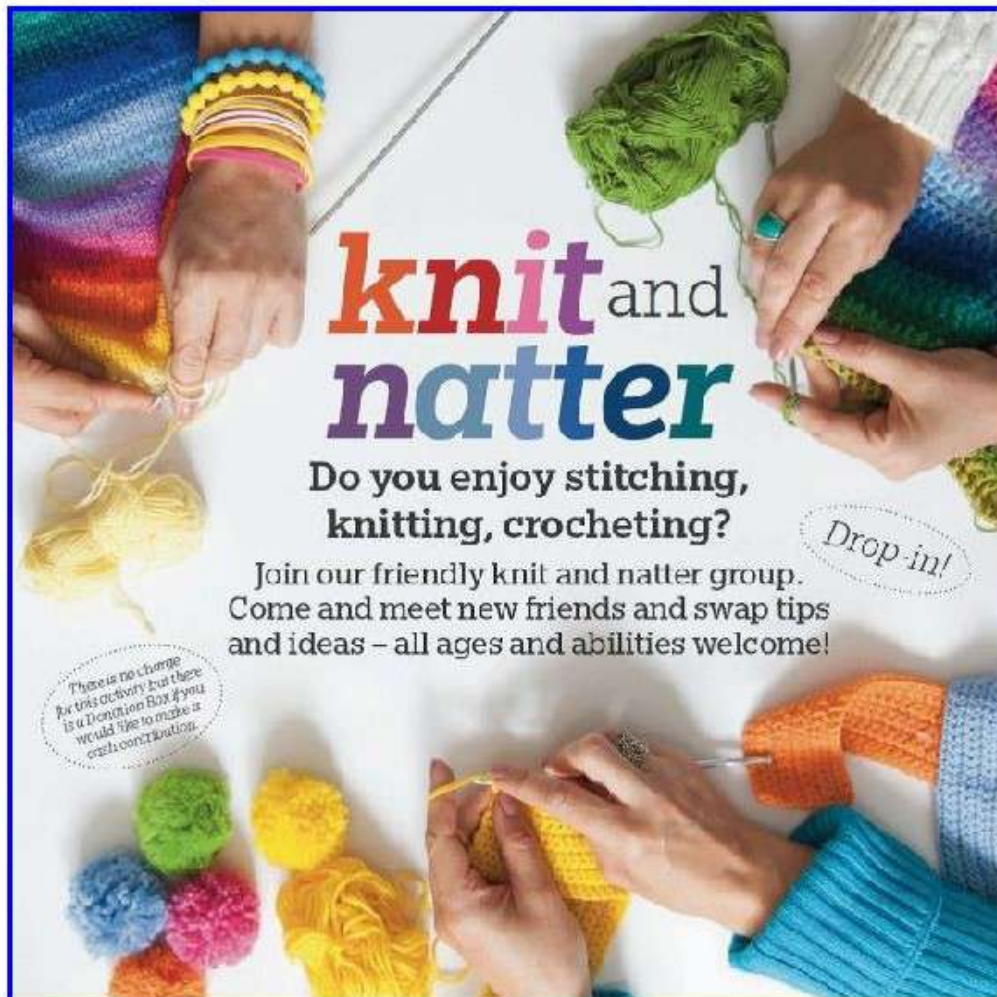
In previous years, membership of C-fylm (the organisation we use to supply us with films) for Parish residents has been met by the Community Association but regrettably this is no longer viable as there was considerable deficit before lockdown. Attendees will be required to join C-fylm at a cost of £6 which includes the cost for the film on that day. Thereafter the cost will be £3 per film payable either on the door or via the on-line booking system. Once a member, which is valid for a year, you can visit other C-fylm venues (such as Callington) and only pay their reduced entry fee.

Looking forward to seeing both our regular and new members alike.

Pensilva Film Club.



Pensilva Film Club presents
On Friday 22nd October at 7:30pm
A screening of
The Good Liar
Starring Helen Mirren & Ian McKellen
At Millennium House, Pensilva
See additional details above



**St John's Church
Pensilva**

**on the
last Tuesday
of the month**

2.00

To

4.00 pm

**Contact Kathleen
01579 363686**

**Next meeting
Tuesday
26th October**

TEARFUND BIG QUIZ - SAVE THE DATE

We have hosted the annual Tearfund Big Quiz here at Rilla Mill Retreat Centre for the past two years, last year on Zoom. This year's Quiz will be on Saturday 20th November, 7 for 7.30pm. We hope it will be possible to hold it in person again this time. There is no registration fee as such but attendees will be encouraged to give a donation to Tearfund, a registered charity. All ages welcome, teams of no more than six please. For more information or to book please contact Maxine Browne on 01579 362611 or maxinecbrowne@aol.com

PENSILVA MEMORY CAFE



*If you have memory problems
or you are a carer for somebody
who does, and would like to
meet others who understand
your situation, then join us here*

at St John's on

Thursday 28th October

2.00 to 4.00 pm

Contact: Geoff 01579 362698

**NOT A TRICK
DROP IN
for a
TAKEAWAY
JUST A TREAT**



**A
takeaway
Bag of Hope
for
every child**

**Hot chocolate drinks
and marshmallows**

**Celebrate God's
light in our lives
Everyone
welcome**



PENSILVA

Remembrance Sunday

14th November

10.45 am

Wreath laying
and 2 minutes silence
at the village memorial.



Followed by a service of remembrance and thanksgiving



in the
Millennium
House
Sports Hall

Traditionally, Remembrance Sunday is an opportunity to remember the service and sacrifice of all those that have defended our freedoms and protected our way of life. We remember the Armed Forces and their families, the vital role played by the emergency services and those that have lost their lives as a result of conflict or terrorism.



Through this time of the pandemic many have given their lives and suffered in service of those who contracted Covid-19: doctors, nurses, NHS workers, the emergency services, care home staff



Key workers enabled life to go on: transport, food, utilities, mail, education

On 14th November, the churches of St John's and St Ive invite you to remember and give thanks for all of these and loved ones who died.

Our churches cannot accommodate the large congregation expected and maintain safe distancing. We are grateful to the Parish Council for generously allowing the use of the Millennium House sports hall for this community Remembrance and Thanksgiving Service.

Enquiries to & further details from Barry Hocking 01579 363686

ST JOHN'S CHURCH, PENSILVA

Services for October 2021

Sunday 3rd	11am	Morning Worship with David Nicholls
Sunday 10th	11am	Café Church with Geoff and Carol
Sunday 17th	11 am	Anglican Holy Communion
Sunday 24th	11am	Morning Service with Mr Norman Rowe
Sunday 31st		United Cluster Service

10 am on Thursdays, a short Cafe Church Act of Worship with Geoff Cox.

Thursday 7th, from noon, Jacket Potato Lunch (see separate poster)

Wednesday 13th, 10:30am Pensilva Methodist Church Council

Wednesday 20th, 3-5pm Good Grief Cafe (see separate poster)

Tuesday 26th - 2-4pm Knit and Natter (see separate poster)

Thursday 28th - 2-4pm Memory Café (see separate poster)

Sunday 31st 6-8pm Light Party (see separate poster).

For further details of the services held in St John's, or if you know of any illness or need in the village, please ring Geoff Cox on 362698 or Frances

St Ive Methodist Chapel

Services for October 2021

Sun 3rd Oct	3 pm	Mr Geoff Williams
Sun 10th Oct	3 pm	Rev Jonathan Budd
Sun 17th Oct	11:15am 3pm	United Service at St Ive Church At Chapel - Rev Iris Bray with Baptism
Sun 24th Oct	3pm	Rev. Iris Bray with Communion
Sun 31st Oct	3pm	Mrs Helen Burke

The Chattermakers group will meet on Thursdays for a time of chat and crafts. For more info please contact Kathryn on 01579 382334.

Millennium House Coffee Shop Opening Hours

**We are open Tuesdays, Wednesdays and Fridays, 9am to 1pm
(to coincide with Post Office days).**

**Our intention is to open more days and for more hours as
soon as Covid regulations allow.**

**Covid precautions are in place at all times, providing a safe
environment for our customers.**

All Being Well

**We are still open for three mornings a week. A maximum of five
members can now attend at one time.**

Opening hours:

Monday, Wednesday and Saturday, 9am to 1pm.

**Maximum five members at a time for each of three slots within
each session: 9:00 to 10:20, 10:20 to 11:40 and 11:40 to 13:00**

Prior booking is essential

**To book yourself in or for any enquiries, call in at the gym or telephone on
01579 363890, during the opening hours listed above.**

**Over 20 years working in our local community to
improve health, fitness and well being.**

Badminton has restarted at Millennium House

Come and join our relaxed and friendly group.

Mon & Tue 7:30 - 9:30pm

For further info phone Nigel or Carol on 01579 363594 or 07885 798370

PENSILVA VILLAGE HALL

Due to the Coronavirus outbreak all activities in the hall are cancelled until further notice.

Anyone wishing to book the hall for future meetings, birthday parties or fundraisers please contact Peter or Jackie Browning on **01579 363212** or email **peterpensilva@gmail.com**

Please note that as well as hall rent there is a coin meter for heating at 60p/hr.



MOBILE LIBRARY

The County Mobile Library is back. It visits our area once a month on Fridays of "week 3" (not necessarily the 3rd Friday of the month).

Next visits: **Oct 22,**
Nov 19, Dec 12.

Stops at The Victoria Inn, Pensilva, 10.25-10.45am; Quethiock bus stop 11.00 to 11.20am.



Struggling with Sight Loss?



iSight Cornwall offers practical help to people living with sight loss in Cornwall including:

Low Vision: Advice for low vision aids

Assistive Technology: Advice on products

Benefits Advice: Assistance to claim entitlements

Equipment Demonstration: Advice on gadgets

Social Clubs & Activities: Links to clubs & activities in the county

For more details Telephone 01872 261110 or visit

www.isightcornwall.org.uk

MILLENNIUM HOUSE

COMMUNITY CENTRE, AND DYNAMIC EVENT
VENUE IN THE HEART OF EAST CORNWALL



Conferencing

We have four meeting rooms for all your corporate needs.



Function Room

For parties, discos, or just larger events; with adjoining kitchen and bar.

Our Facilities

Sports Hall

For sports or larger events requiring a stage, the sports hall is our biggest venue.



Coffee Shop

Providing tea, coffee and cake. And for something stronger, there's the Mel, a licensed bar.



Enquire today:
01579 363096

www.millenniumhouse.org.uk
PRINCESS ROAD, PENSILVA, PL14 5NF

What Do We Do?

From wedding to wakes, kids or adults, corporate or community, we can host and cater your event. If you have an idea that's not covered here, get in touch and see if we're the right venue for you.

We're also home to:

- ✓ The Mel bar
- ✓ All Being Well Fitness Centre
- ✓ Post Office
- ✓ Sunflower Park kids playground
- ✓ Extensive playing fields
- ✓ Community Library



AGEUK Electric Vehicle

Do You Require Transport to and from the Doctors or Hospital?

AGEUK has successfully secured European Regional Development (ERDF) funding to

contribute towards the purchase of 6 fully accessible Electric Vehicles. 6 Electric Vehicles have now been purchased and are ready to be used by local groups & the Cornish community.

Their aim is to connect local communities and reduce social isolation using environmentally-friendly transport solutions. The Vehicle situated at Millennium House Pensilva can be used by individuals or community groups, for hospital visits, outings etc. The vehicle is capable of carrying a wheelchair, and there is a barrier between the driver and rear passengers for COVID isolation.

If you have mobility issues including wheelchair user, or unable to drive to your appointment, please contact Millennium House on 01579 362919 or 01579 363096 and we will endeavour to help.



News from The Growing Project

The Growing Project is already very well-known to many in our parish, if nothing else from the many articles it has contributed to the Parish Pump over the years. For those who are not so familiar with it, it is a

Community Interest Company, founded in

2011 by the late Ruth Wilson, where local volunteers grow and sell organic fruit and veg for the local community. At the same time it provides a safe space for the helpers to enjoy a beautiful, peaceful and healing environment. About three or four years ago, The Growing Project inherited the one-acre site in Pensilva where it is located, but while the facilities there for growing produce are first class, the facilities for the people involved are very basic. So, The Growing Project has launched a crowdfunding initiative to help to finance the provision of electricity, running water, and some toilets. To find out more go to <https://chuffed.org/project/the-growing-project-fundraiser>

Terracycle Recycling

TerraCycle is a company which specializes in recycling “hard-to-recycle” waste. While most waste is technically recyclable, it is not always cost effective through traditional collection methods which is why councils don’t accept many materials.



Crisp packets, make-up, oral care for example are made from a complex mix of materials which require specific machinery and techniques to recycle, making the recycling process itself expensive when compared to the value of the recycled material. This is why waste such as this is not recycled by local councils: the economics simply do not work.

To solve this issue of making the economics work, TerraCycle primarily partners with brands to sponsor free recycling programmes to the public. These brand partners cover the costs of transporting and processing the waste as well as an optional charitable incentive to those members of the public who sign up to the programmes and send their waste to TerraCycle.



The **SHARE Recycling for Charity project** sends items via these free programmes sponsored by Walkers, KP, Pringles, Nestles, McVites, Jacobs, Cathedral Cheese, Hovis, Colgate, Garnier, Burts Bees ... SHARE has set up many local collection points for people to drop off sorted items and has a team of enthusiastic volunteers involved in sending these items to TerraCycle.

To read more please visit our web page www.south-hill.co.uk/charity-recycling If you have questions or you want to be involved in some way please let us know by emailing SHARE@south-hill.co.uk

The **SHARE Recycling for Charity project trailer** will be at Liskeard cattle market on **Saturday October 9th** from 10 – 1pm, stopping outside St Johns church **Pensilva at 1:20pm** before heading home to Golberdon where we welcome you from 1:30 – 3pm to come and see how items are handled and you will appreciate the scale of the operation. Please let us know you intend to visit so we have a good idea of numbers and can give you easy directions. Email SHARE@south-hill.co.uk

Thank you. Ali Humphreys. SHARE Recycling for Charity project lead.

These traineeships are also available to young people in the Parish of St Ive.
Contact details in the blue box (bottom right) below.

Traineeships for 19-24 year olds in Looe



Finding it hard to secure a job or an Apprenticeship, but feel you need more guidance and experience? Have you thought of doing a Traineeship?

A Traineeship is a great opportunity for you to build up your skills and experience through a work placement to make you more employable.

Traineeships include Maths and English Functional Skills, Employability Skills and 70 hours voluntary work placement.

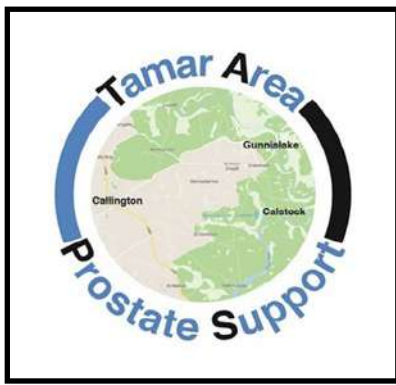
You will spend three days a week in our centre with two days per week on a work placement with a local employer.

The programme is delivered in small groups of up to 6 people in our central Looe learning centre.

To be eligible your highest existing qualifications must be at Level 3 or below.

New for 2021!
Opportunity for a 2 week work placement in Malaga, Spain.

For further information contact us on 01503 770752 or e-mail cornwallskills@wrecitd.co.uk



As with all local groups who meet regularly, COVID-19 knocked our plans sideways and we resorted to using Zoom. But with light finally on the horizon (better than at the end of the tunnel) we are hoping to restart our face-to-face meetings later this year, at Callington Town Hall.

In the meantime, we have created a new website which carries news of our Zoom meeting dates, speakers, copies of all editions of our newsletter "The Faucet", and how to make contact with the TAPS team, as well as other useful information.

If you are recently diagnosed and just want to have a chat about your treatment or your options, we encourage you to get in touch.

Find us at: -

Website: <https://www.tamarareaprostatesupport.org/>

Email: tapsinfo555@gmail.com

Phone: Chris on 01822-834797

TRADITIONAL STONE SERVICES

CLASSIC & TIMELESS STONE MASONRY AND LETTERING

MEMORIAL CLEANING

COMMISSIONS TAKEN

01579 363693 OR 07507 782282

Bargain Corner Free Ads up to £50

Ads are free for items up to £50. £5 charge for items over £50. Please ring the Parish Office on **01579 363096** or leave a note at Millennium House reception or email **parishpump@btconnect.com**.

*****Please let us know when your item has sold*****

Free to good home, old but working **microwave oven**.
Lovely medium shade, solid wood oval **dining table and 4 chairs**. 5' long by 39" wide. Neutral coloured soft seats.
Excellent condition. £20. **01579 208836**.
Buyer collects from Callington.

Canon MG-2450 **printer**. Free to good home. **01579 347105**.

Villager Woodburner for sale. Width 23", Height 34". Double glass doors. VGC. Buyer collects **£250**
01579 362531 or **07379 588277**

Long handled garden fork in VGC. Ideal to prevent back strain when digging or removing shrubs. **£15**. Collection Only,
2 electric drills in working order with chuck keys **£15** for the two.

Brand New **Vinyl Flooring** for kitchens, bathrooms or hallways 13ft long x 2ft 11 inches wide. Colour light to mid grey. **£25**.
Early 19C / late 18C **cast iron fireplace faceplate** in GC, 36" high x 24" wide. Ideal as a fire faceplate or ornament. **£35**.
Six coils of industrial steel cable now surplus to requirements **£35** the lot.
01579-384658 (Safe Distancing if reqd.)

Petrol lawn mower, approx 19 ins, in working order. **£30**
Crockpot slow cooker, hardly used, excellent condition. **£10**
01579 363573

2 short legged wetsuits. 1 x 38" chest and 1 x 42" chest. Used once. As new. **£20 each**. **01579 362128**.

Canon IP2700 **Printer**. **£20**
Computer screen 19" **£20**.
Epson Perfection v350 **Scanner** Photo **£20**
Sony Revia 42" **TV**. **£45**.
All in working order. **01579 363200**

Set of 3 **suitcases**, red, vgc, Antler, **£40** ono. **07770 747353**. Pensilva area

Set of **Snow chains**, new and unused fit 14" to 19" rims, self adjusting. **£40**
Pensilva **01579 362207**

2 x Medium Weight **Car Ramps** **£20**.
Push Mower **£5**. **01579 363199**

Maximuscle **home gym** system **£100** ono.
Black leather **chaise longue**. Excellent condition. **£100** ono.
Scelextric Sport Le Mans set. Still in box. Great condition. **£100**.
Plastering gear: 110v paddle mix with transformer, various trowels, hawk and other bits. Good for DIY etc. **£70** ono.
Easycamp Tour Ligata **6 berth tent**. Used only 3 times. **£100** or offers.
Dark brown **leather chair**. **£50**
07980 380224 - Pensilva area.

Brown speckled **carpet**, 2m x 5m. Brand new (over ordered). **£50**.
Arch design **headboards**. **£20** each or **£35** pair. **01579 362211**

ADVERTISING SECTION

NOTICE TO ADVERTISERS

From St Ive Parish Council.

September 2021

Firstly, thank you for advertising in the St Ive Parish Pump. Your support enables us to provide a much-valued monthly newsletter to our parishioners. At the same time, the newsletter gives businesses in our area affordable access to a sizeable local market of grateful consumers.

For fifteen editions, between May 2020 and July 2021, the Pump was only available online, but we have been back in print since the August 2021 edition. We have not charged for adverts in the newsletter during the “online only” period. For advertisers with 12-month orders, we have extended the expiry date of your order by 15 months. For example, if the last month covered by your order was May 2020, we have extended it to August 2021. If the last month of your order was April 2021, we have extended it to July 2022. In short, most of you will have received fifteen months of free online advertising during the time we were not in print.

The Parish Council has revised the conditions for advertising in the Parish Pump. The changes relate to payments and prices:

New advertisers will be asked to pay in advance and their advertisements will not be included until the edition following the 15th day of the month in which payment is received. e.g. Ads paid for by 15th January can be included in the February edition.

Advertisers who are behind with their payments will have their adverts removed from subsequent editions until payments are brought up to date. To make it easier for you, we are adding a facility to pay by card over the phone.

Advertising prices will increase with effect from January 2022 as follows:

Advance notice of new advertising rates taking effect from the **January 2022** edition.

	<u>Net of VAT</u>		<u>Including VAT</u>	
	<u>1 month</u>	<u>12 months</u>	<u>1 month</u>	<u>12 months</u>
Quarter Page:	£ 8.33	£83.33	£10.00	£100.00
Half Page:	£ 16.67	£167.67	£20.00	£200.00
Full Page:	£ 27.50	£275.00	£33.00	£330.00

All advertising orders placed or renewed till the Dec 21 edition will be at the old rates. A few monthly advertisers were mistakenly billed at the higher rate for the Aug and/or Sep editions. The error will be rectified in the billing for the October edition. We apologise for the error, and for delays in billing you since we restarted printing.

Finally, we would like to point out that the last time we increased advertising rates was in December 2012, meaning that it will have been just over nine years since the last price increase. We all know what has happened to prices generally over that period!

Thank you, once again, for advertising in our newsletter. We hope that you will continue to do so, and we wish you every success with your business.

I'm a **domestic cleaner**
with over 25yrs
experience and I am
looking for local
customers.

DBS checked!

References available on
request!!

Mobile 07818044195

Margaret300gregory@
btinternet.com.



FOR ALL YOUR CELEBRATION NEEDS

Visit our shop: 12 Fore Street, Callington

Call us on 01579 384386

Find us on Facebook or visit our website:

www.victoriaeyton.co.uk

- Helium Balloons - Balloon Arches -
- Bespoke Balloon Designs -
- Personalised Balloons - Partyware -
- Huge selection of greetings cards -
- **Weddings, Parties and Corporate events catered for.**

DOG GROOMING

40 YEARS EXPERIENCE



SMALL and MEDIUM Dogs
Groomed to Your Request

LISKEARD AREA
Inquiries Welcome

Call Patricia: 07517 658862
30 TO YOU OR TO ME



Domestic Electrical
Property Maintenance
Interior & Exterior Work
Carpentry :: Decking
Kitchens :: Bathrooms
Wall & Floor Tiling
General Plumbing

MCCARTHY PROPERTY MAINTENANCE

Electrical Safety Register incorporating
ELECTSA  ECA
Certification Ltd

HIGHLY REGARDED LOCAL BUILDER
COMPETITIVELY PRICED
COVERING THE SOUTH WEST

Contact Dominic

07968 599 675

01579 362 945

info@mccarthypropertymaintenance.co.uk

www.mccarthypropertymaintenance.co.uk

Westwood Garden Maintenance



Antony Watts

Grass Cutting, Clearance

Weeding, Turfing

Hedge Cutting

Patio Cleaning, Planting

Regular Visits / One-off Contracts

Residential & Commercial

FREE ESTIMATES

01579 362019 www.westwoodgm.co.uk 07952 094472

JPH Plastering and Rendering

Internal plastering

Internal and external rendering

Internal/external painting & decorating

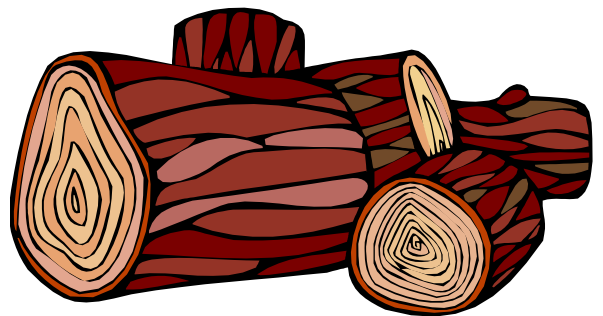
Property maintenance

Landscaping and land management

For estimates and no obligation quotes
contact Justin on:

07539 296799 or
info@just-in-stone.co.uk

SEASONED LOGS



MIXED LOAD

or

HARDWOOD

Tel. Jonathan

Mobile 07966 070725

or

01579 363157

PENROSS

Rosecraddoc Lodge Holiday Bungalows
(Between Pensilva & Lisheard)

Ideal for family & friends coming to visit!



Refurbished in 2018. Sleeps 4. Electric, heating, bedding & towels inc in rent. Patio. Free wi-fi. Follow us on Facebook.

Sorry no pets or smoking.

Contact Julie Tucker on 01579 362221 or

email penhargetfarm@gmail.com

for 15% discount

NICOLA GREENE

BSc (hons) Podiatry MChs

HPC Registered Chiropodist/Podiatrist

**Home Visit Practice treating all
your foot care needs:**

- Nail Cutting
- Corns and Calluses
- Thickened Nails
- Dry Cracked Skin
- Verrucae
- Foot Pain
- Diabetic Foot Assessments
- Wound Care

T: 01579 590027

M: 07786164205

E: nicki_greene@yahoo.com

JUST IN STONE

Maintaining and preserving our
countryside for the benefit of all

Dry Stone Walls

Cobblestoning

Stone faced walls

Hedgelaying/steeping

Land management

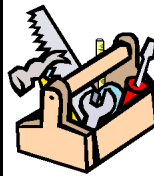
All aspects of Landscaping

Mobile: 07539 296799 or

Email: info@just-in-stone.co.uk

KEEP IT TIDY

General Property Maintenance
including Decorating, plus Electrical



**HONEST PRICE
for
QUALITY WORK.**



No Job Too Small

Kit Rickard

18 Higher Glen Park
Pensilva

Phone: 01579 363378

Mobile: 07855 699071

Email: KITKeepItTidy@hotmail.com

Debbie's Care Services
Tel. 0777 948 3230

Hello, my name is Debbie. I am a local lady who has been working in the community for over 30 years.

I provide the following services and more!

- Assisting bathing / showering
- Preparation of meals
- Cleaning / Shopping / Ironing
- Companionship / Friendship and emotional support
- Assisting with mobility
- Day, Evening and Night Care

MUST STEP
PODIATRY
HCPC Registered
podiatrist

Fully insured
NHS experience
Kind and caring
Home visits

All your footcare needs
Most areas covered
Tel: 07522 577012 or
07561 608296

DO YOU NEED A HELPING HAND?

Reliable, friendly,
experienced, mature
local resident offering
the following services:

Cleaning Ironing

Shopping Light Gardening Dog Walking

CRB/DBS checked and fully insured. Competitive rates.

Contact Jess: Telephone or text: 07934 764 327.

Email: homeangel77@yahoo.com. Find us on Facebook



Matt's Windows

**Repair of Windows, Doors
& Glass Unit Replacement**

T: 01579 641228

M: 07533 387368



PENSILVA GARDENER

**20 years experience in Garden
and Countryside skills.**

All garden work undertaken.

Call Chris on 01579 383047

or 07792 936413



KV Accounting Solutions

ACCA

Local Accountant offering fixed fee accounting services

With over 20 years experience, I am a fully qualified, friendly, local accountant

- | | |
|---|--|
| ✓ Annual Accounts for Sole Traders and Partnerships | ✓ Self Assessment tax returns |
| ✓ Book Keeping & Payroll | ✓ iXBRL tax filing |
| ✓ Personal Tax Planning | ✓ Tax investigation Fees Insurance |
| ✓ Company Accounts | ✓ Company Secretarial work |
| ✓ Business Support & Advice | ✓ Tax calculations for Sole Traders and Partnerships |

Kate Vaughnley FCCA - Chartered Certified Accountant
Website : www.kvaccountingsolutions.co.uk or Email : katevaughnley@gmail.com
Telephone : 01579 364083



BA

Gas Services

NATURAL GAS - LPG - OIL

BOILER INSTALLATION

BOILER SERVICE & REPAIR

LONG WARRANTY FREE QUOTES

07859848288

bagasservices@outlook.com

533335

GAS
safe
REGISTER



Affordable Counselling

Caring, confidential,
non-judgemental

- Increased confidence and self esteem
- Help to cope better at difficult times
- Improved relationships
- Clarify confused thoughts & feelings
- Assertiveness
- Personal insight
- Improved emotional health
- Available for youth and adults

Isabelle McGarahan BA, PGCE
Dip in Therapeutic Counselling,
Accredited ACC, DBS cleared
www.im-counselling.org email:
isabelle@im-counselling.org
01579 344090/07857326229



P BRADLEY PLUMBING & HEATING

Email: info@pbplumbingheating.co.uk

Web: www.pbplumbingheating.co.uk

Facebook: @PBradleyPlumbingandHeating

NO JOB TOO BIG OR SMALL

24hr Emergency Call Out

Based in Liskeard

Call Today 07598956760

***"The complete bathroom
installation service"***

**New bathrooms fitted,
floor and wall tiling specialist**

General Plumbing including:

- Bathroom makeovers
- Dripping taps and burst pipes
- Pump and cylinder changes
- Radiator upgrades and additions
- Specialist in Leadwork
- No job too small
- No Call out charge



W. Hale
Plumbing

Friendly Service, Quality Work

NO VAT

**City and Guilds Qualified
established 1983**

Call William Hale on

Tel: 01579 362132 Mobile: 07826 699719



Kiln Dried Firewood
Kindling & Firelighters
Eco Heatlogs
LPG Bottled Gas
Patio, BBQ & Camping Gas
Coal & Smokeless Fuel



0800 8021 223
sales@loganslogs.co.uk
www.loganslogs.co.uk

Heel 2 Toe Footcare

Tired Aching feet.

Corns, Hard skin, Verruca.

Fungal infected toe nails, or
toe nails require cutting.

Diabetic feet also treated and
regularly checked.

I can help to keep your feet
looking and feeling good.

I am a trained Foot Health
Practitioner to Diploma Level, fully
insured & DBS checked.

I can do home visits via an
appointment.

Call Penny: **07746 926146** for
further information. **Please note
new number May 2021.**

MARK FITCH CHIMNEY SWEEP

- * BRUSH & VACUUM
- * CLEAN, RELIABLE SERVICE
- * COVERING ALL S.E. CORNWALL
- * DISCOUNT FOR MULTIPLE CHIMNEYS
- * COWLS & GUARDS FITTED
- * STOVES SERVICED



*Call
Mark on:*

01579 350762
07773 462643



QUALIFIED RAYNOR MASSAGE THERAPIST

RELAXING AND THERAPEUTIC MASSAGE TREATMENTS

Effective for many different types of chronic pain, sports injury, stress and tension related problems



CBD massage now available

APPOINTMENTS AVAILABLE AT

LISKEARD THERAPY CENTRE
LISKEARD PL14 3JB

THE WELLBEING CENTRE
LISKEARD PL14 6AT

Contact : Tina North

Phone : 07720 832322



Website : massage-therapy-cornwall.co.uk



R J Gardening & Handyman Services

All aspects of gardening and handyman work undertaken.

- ~Local and Trustworthy
- ~Hard Working
- ~Reliable and Experienced
- ~No job too small
- ~Competitive rates

Contact Raymond on:

07541 229064 or 01579 347622

raymond_pearcegb@yahoo.com

Find us on Facebook.



Fencing
 Paths & Steps
 Turf & Astro turf
 Driveways
 Retaining walls
 Digger work
 Footings & foundations

Patios
 Rendering
 Decking

And more

Free no obligation quotes

Call Rob on:

**07518246666 or
 01579 641802**

Window Cleaner Window Cleaner

Also any upvc cleaned

i.e. fascias, gutters, etc.

gutters cleared & unblocked

Please phone Rob

07709 053464

Window Cleaner Window Cleaner

Save Costly Energy!



SOLARTEC

Windows &
 Conservatories Ltd

**'A' Rated WINDOWS & DOORS
 at BEST PRICES EVER!**



Professionally fitted and finished by us with a
 10 year ins. guarantee.
 In all colours



NEW

**FACTORY SHOP
 SUPPLY ONLY**

For all your windows, doors, conservatories,
 fascia, trims, guttering and sealants

**7-10 DAY TURN AROUND ON WINDOWS,
 DOORS and CONSERVATORIES**

TEL: 01579 343425

FAX: 01579 344500

WEBSITE: www.solartecwindows.co.uk

EMAIL: sales@solartecwindows.co.uk

KEEPING JOBS IN CORNWALL

PJR Garden Services

Phil Rule

All aspects of garden
 work - grass / hedge
 cutting, patios, fencing
 etc.

Mobile 07387 449004



Group Travel

Day Trips & Coach Holidays

Enterprise Park, Midway Road, Bodmin, Cornwall PL31 2FQ

Coach Excursions & Tours 2021/2

14th September	Widcombe Fair
19th - 24th September	Visit Yorkshire
4th - 8th October	Visit Blackpool
13th October	Goosey Fair, Tavistock
19th - 22nd November	Turkey & Tinsel: Weston-Super-Mare
27th November	Exeter Christmas Market
4th December	Bath Christmas Market
19th December	Cornish Christmas Lights
19th December	London Int. Horse Show @ ExCel

Early 2022

12th March 2022	Crufts, The Worlds Greatest Dog Show
24th - 29th April 2022	Chester, Liverpool & the Beatles
30th April 2022	Toby's Garden Festival, Powderham
6th May 2022	Steam Train & Kents Cavern
19th May 2022	Cruise the English Riviera
8th - 9th July 2022	Hampton Court & Kew Gardens

Call: 01208 77989

for bookings or brochure

Visit our 2021 / 2022 Excursions Page on our website where you will find a link to download a PDF version of our brochure.



website: grouptravelcoachhire.co.uk

email: grouptravelcornwall@btconnect.com

facebook: facebook.com/grouptravelcwl

Martin Hoare – Local, Reliable, Competitive



WHEEL DIGGER FOR HIRE
ALSO AVAILABE 'BREAKER'
AND NEW CONCRETE
'CRUSHER BUCKET'

ALL AT COMPETITIVE RATES

GROUND WORKS
DRAINAGE
NEW DRIVEWAYS
SEPTIC TANKS &
'SOAK AWAYS' INSTALLED



LASER LEVEL FOR HIRE
QUOTES AVAILABLE



Phone 01579 363517

or

Mob 07863 291213



INDEPENDENT FAMILY FUNERAL DIRECTORS

Supporting families to arrange funerals with sensitivity, dignity and care.

- Flexible, caring approach, tailor-making funerals to suit your needs and budget.
- Open and transparent, affordable pricing.
- Free bereavement support sessions, open to all in our community, first Wednesday of the month, 10am - 12pm.
- Prepayment Funeral Plans available

For details of our services and prices, visit our website.



01579 362358 | www.fdhallfunerals.co.uk



Avalennek, Caradon Town,
Upton Cross, Liskeard
Cornwall PL14 5AR
Telephone 01579 363598
Mobile 07901 538132
chrisrounsevell@tiscali.co.uk

HOG ROAST EQUIPMENT HIRE AND MEAT SUPPLY

Hog Roasts For Those Special Occasions
Self Catering or Hassle Free Service
Everything done to your special requirements

CHRIS ROUNSEVELL
TRADITIONAL BUTCHER

Come and visit our recently updated
Tile & Bathroom showroom in PENSILVA

We offer a generous discount to all Pump Readers

Unit 24 Pensilva Ind Est, St Ive Road, Cornwall PL14 5RE 01579 362264



CORNWALL TILE
CENTRE

Pensilva Showroom

Open Mon - Fri 8.30am - 5pm
Saturday 9.00am - 1pm

Tiles & Mosaics for:

Bathrooms & Kitchens Living Areas Conservatories
Patios & External Areas Wet Rooms & Spas Swimming Pools
& All Commercial Applications

 atlas concorde

www.cornwalltile.com

OPEN FOR RETAIL, TRADE & COMMERCIAL ENQUIRIES



THE HOME OF WOOD

BULK DISCOUNTS AVAILABLE ON OUR 30 YEAR SERVICE LIFE POSTS



OUR GOLD TREATED STAKES AND POSTS ARE THE ONLY ONES AVAILABLE IN THE UK THAT ARE APPROVED BY THE WPA BENCHMARK FOR 30 YEAR SERVICE LIFE

For more information please contact one of our team



Bond Timber, Bake Sawmill, Trerulefoot, Saltash, Cornwall,

PL12 5BW

01503 240 308 stacy@whbond.co.uk

Pensilva Stores

Amazing Value

Premier
a great deal more from your local store
Mon-Sat. 7:00 AM. - 9:30 PM.
Sunday 8.00 AM. - 9:30 PM.

- ✓ Fantastic Special Offers every month!!! (See store leaflets)
- ✓ Come and Check out our great deals on Wine, Beer and Spirits
- ✓ Local Produce: Homemade Butter and Clotted Cream, Meat from our local butcher
- ✓ Cornish Fresh Fruit and Vegetables
- ✓ Fresh Bread, Pasties and Cakes
- ✓ Take Away Coffee, tea and hot chocolate
- ✓ Newspapers and Magazines, Greeting Cards
- ✓ Paypoint, Lottery

*** Free to use ATM ***
*** Card Payment ***

Friendly Staff + Service with a Smile !!!

Pensilva Stores is a family run business who have been serving local people and visitors for more than 21 years.

Higher Road, Pensilva, Liskeard, Cornwall PL14 5NQ

Tel: 01579 362547

MENDOLOGY

Garage Door Specialist

- Repairs
- Servicing
- Installations


Out of hours service
call Dave anytime 07974 442645

MENDOLOGY COMMERCIAL DOORS LTD
www.mendologydoors.co.uk

01579 363760

PensilvaCars

01579 363516

- ✓ MOTs Class 4
- ✓ Service
- ✓ Repair
- ✓ Tyres
- ✓ FREE Courtesy Car
- ✓ Car & Van Sales
- ✓ Diagnostics
- ✓ Air Conditioning
- ✓ 

We have offered a supply, fit & balance of tyre service for 10 years at competitive prices.

Most of our tyres can be supplied the same day.

LOCAL RECOVERY £45.00

www.pensilvacars.co.uk

pensilvacars@hotmail.co.uk

We can service and repair your car to manufacturer specification, keeping your dealer warranty without main dealer expense.





KEITH RICHARDS

Motor Body Repair Specialists

A family run business with fully equipped & maintained workshops & a focus on
Customer Care

- ◇ Motor Body Repair Specialist
- ◇ Mechanical Repairs
- ◇ Servicing to All Makes & Models
- ◇ Computer 4 Wheel Alignment
- ◇ 24 Hour Recovery Service
- ◇ Renovations & Re-sprays
- ◇ Member of RMI (Retail Motor Industry Federation)
- ◇ Latest Diagnostics (including specialists for VW, Audi, Seat,
Skoda & Vauxhall)

With over 30 years' experience we aim to provide you with:- Value for Money -
Friendly Service - Professional Approach - Expert Advice that you Can Trust
(Visit our website for more details)

Pensilva Industrial Estate, St Ive Road, Pensilva, Liskeard, Cornwall PL14 5RE

Tel: 01579 362593

Email: keith@keithrichardsmotorbody.co.uk

Fax: 01579 363194

Website: www.keithrichardsmotorbody.co.uk

Wm. Newham & Sons ^{Est. 1835}

Proprietor Robbie Savill AWCB

**CHIMNEY SWEEPS
& BLACKSMITHS**



CHIMNEY SWEEPING

BIRD GUARDS, COWLS & POTS FITTED

CCTV INSPECTIONS & SURVEYS

STACK REPAIRS & REBUILDS

RIGID STEEL SYSTEMS ERECTED

STAINLESS STEEL and PUMPED CONCRETE
CHIMNEY LINING

STOVES SUPPLIED, INSTALLED & REPAIRED

FIREPLACE ALTERATIONS & RENOVATIONS

FULL RANGE OF FIREPLACE FURNITURE
made to order

01579 347777

need somewhere to stay ?
between homes ?
family/friends visiting ?

Cutkive Wood

Holiday Lodges

ideal for Pensilva
& St.Ive

please call Jackie on
01579 362216

J. J. Child

Plumbing and heating engineer.

Oil appliance service, repair and breakdowns.

Over 30 years experience

Call John: 01579 362336 or 07837 921086





Pensilva & St Ive Post Office Service

Pensilva: Through the Café on the 1st floor of Millennium House

Tuesdays: 9am to 1pm.

Wednesdays: 9am to 12 noon.

Fridays: 9am to 12 noon

**The Millennium House
coffee shop is also open on
these mornings.**

.....

St Ive: At St Ive Village Hall

Wednesdays: 10:30 to 11:30am

**Coincides with the St Ive
Village Hall Coffee Morning**

Saint Ive Parish tree-planting survey

Please let us know about any trees that you plant within the Parish. We will include them in our own survey and we will notify the Forest for Cornwall on your behalf, if appropriate.

Contact us by phone: 01579 383967, or by email:

parishpump@btconnect.com, or via the Saint Ive Parish

Climate Action Group Facebook page. Pictures very welcome.

