

THE PARISH PUMP



August 2021
Edition 477



The Newsletter for the Parish of St Ives

The Parish Pump is back in print! Here's a selection of four Covid-related covers out of the 14 'online only' editions.



June
2021

Covid vaccinations. Well done everyone involved everywhere, and especially at Millennium House!

December
2020

Mingle well, mingle well. Careful how you mix.
Oh! What fun you're sure to have, when you stick to the Rule of Six!

March
2021

Millennium House Pensilva - Covid vaccination hub for South East Cornwall.

EASING OF LOCKDOWN RESTRICTIONS FOR WEDDINGS

July
2020

Disclaimer

The articles appearing in this magazine do not necessarily reflect the views of the Parish Council nor of the Parish Pump Editor.

Parish Councillors Telephone List

Alan Moss (chair)	01579 362064	Ivor Vaughan (vice-chair)	07979 934604
James Bruce	07411 192645	Marlene Carr	01579 362919
Martin Corney	01579 382450	Sandra Doe	01579 363096
Rosemary Farley	01579 384810	Nigel Gisby	01579 363096
Ron Greenhough	01579 363096	Tony Hodson	07973 536964
Nigel Libby	07968 891814	Paul Mann	01579 363757
Craig Vaughnley	01579 364083		

Meetings of St Ive Parish Council

Meetings are now being held when possible. Please see the Parish Council website for meeting dates, agendas and minutes.

<http://st-ive-parishcouncil.gov.uk/minutes-agendas/>



Devon & Cornwall Police
Building safer communities together

 **101**

Minicom 18001 101

Police Community Neighbourhood Office

Your Community Support Officer is PCSO Steve Edser 30173.

email: CIOSNBMLiskeard@devonandcornwall.pnn.police.uk

To report a crime call 101 or go to www.devon-cornwall.police.uk

In an emergency call 999

Contact details for St. Ive Parish Council and for Millennium House

Address for correspondence: Millennium House, Century Square, Pensilva PL14 5NF

General Parish matters should be raised initially with the Parish Clerk, Jenny Hoskin, who will present them to the Parish Council.

Telephone: 01579 363096, email: stiveparish@btconnect.com

For accounts matters for the Parish and for Millennium House contact John Body, Finance Officer: 01579 362102, email: millenniumhouseadmin@btconnect.com

Millennium House enquiries and reservations: 01579 363096

email: millenniumhouse@btconnect.com.

On the web: Millennium House Website: www.cornwallvenue.com

Parish website: st-ive-parishcouncil.gov.uk Facebook: facebook.com/stiveparishcouncil

Parish Pump Information and Contact Details

To contact the editor please email: parishpump@btconnect.com

or phone the Parish office: **01579 363096**.

Hardcopy submissions by post or by hand to the Parish office, Millennium House.

Softcopy submissions: By email to the editor in MS Word, MS Publisher, pdf, Tiff or jpeg. Please use A4 pages and minimum 16 point font as the Pump is initially produced in A4 size and reduced to an A5 booklet at the printing stage. If in doubt please contact the editor.

Current Advertising Prices including VAT at 20%

Per issue: Quarter Page £7.50 Half Page £15.00 Full Page £25.00

10% discount for 12 months paid in advance.

Bargain Corner free ads by email to the editor or drop off at the Parish Office.

Deadline for the Parish Pump is STRICTLY 15th of every month

LOCAL BABYSITTER

Hi, my name is Megan and I live in Pensilva. I'm studying a level 3 childcare course at St. Austell College. I'm 17 years old and I'm available most evenings for child or baby sitting.

I charge £4.50 per hour for hours between 19.00 and 00.00.
After midnight £7.00 per hour.

Phone 07401 295024

From the Editor

The Parish Pump is back in print! As I write this, prior to sending this edition to the printers, we have received enough (we hope!) offers to help with the distribution, but a few more wouldn't go amiss. So if you feel able to help, please let us know. See the notice below.

It's been a long haul! The last printed edition before this one was April 2020, making fourteen editions that have been online only! It hasn't been the same for me, as editor, nor, I imagine, for many readers. Even now there are hardly any events advertised, and many of our groups have not yet started back - as far as I am aware! Could I ask all groups to let me know what you are up to? Have you restarted your activities? If so, are you back to pre-Covid normal or do you have restrictions in place? I hope that the Parish Pump still has a role to play in keeping parishioners informed about what's going on.

Thank you all for your patience! I look forward to hearing from all our former regular contributors in time for the September edition.

Keep well - Joe

Volunteers required to distribute the Parish Pump

Can you spare a bit of time to help distribute the Pump to houses near you? It's just once a month, towards the end of the month, and you can deliver as many or as few as you can cope with. We will call you when the copies are ready at Millennium House. If you will be away, you can arrange for a friend to do your round, or let us know and we'll try to find someone to cover. You can also volunteer to be on a standby list for when other people are unavailable. To volunteer:

Ring Millennium House reception on 01579 363096, or

Call in person at Millennium House reception, or

Email stiveparish@btconnect.com

Thank you

St Ive Parish Council

All Being Well

Your local, friendly gym.

We are open again, for three mornings a week and with limits on the number of members that can attend at one time.

Opening hours:

Monday, Wednesday and Saturday, 9am to 1pm.

Maximum **five** members at a time for each of three slots within each session: 9:00 to 10:20, 10:20 to 11:40 and 11:40 to 13:00

Prior booking is essential

To book yourself in or for any enquiries, call in at the gym or telephone on **01579 363890**, during the opening hours listed above.

Over 20 years working in our local community to improve health, fitness and well being.

Millennium House Coffee Shop Opening Hours

We are open Tuesdays, Wednesdays and Fridays, 9am to 1pm
(to coincide with Post Office days).

Our intention is to open more days and for more hours as soon as Covid regulations allow.

Covid precautions are in place at all times, providing a safe environment for our customers.

Badminton has restarted at Millennium House

Come and join our relaxed and friendly group.

Mon & Tue 7:30 - 9:30pm

Friday 8:00 - 10.00pm

For further info phone Nigel or Carol on 01579 363594 or 07885 798370

MILLENNIUM HOUSE

COMMUNITY CENTRE, AND DYNAMIC EVENT
VENUE IN THE HEART OF EAST CORNWALL



Conferencing

We have four meeting rooms for all your corporate needs.



Function Room

For parties, discos, or just larger events; with adjoining kitchen and bar.

Our Facilities

Sports Hall

For sports or larger events requiring a stage, the sports hall is our biggest venue.



Coffee Shop

Providing tea, coffee and cake. And for something stronger, there's the Mel, a licensed bar.



Enquire today:
01579 363096

www.millenniumhouse.org.uk
PRINCESS ROAD, PENSILVA, PL14 5NF

What Do We Do?

From wedding to wakes, kids or adults, corporate or community, we can host and cater your event. If you have an idea that's not covered here, get in touch and see if we're the right venue for you.

We're also home to:

- ✓ The Mel bar
- ✓ All Being Well Fitness Centre
- ✓ Post Office
- ✓ Sunflower Park kids playground
- ✓ Extensive playing fields
- ✓ Community Library

THE Growing Project

PENSILVA

OUR NEWS

July has been busy, a lot of picking and sowing. We have enjoyed picking lettuces, strawberries, loganberries, rhubarb, blackcurrants, chard, potatoes, onions and not forgetting broad beans, cucumbers, tomatoes and courgettes. We have planted purple sprouting broccoli and the leeks are growing well.

A big thank you to Jenny who lives next to the shop who has raised £500 for our utilities fund by selling her plants outside her house.

Thanks Dave for kindly delivering a large pile of Cyprus woodchip which have good use around the roses and between beds to help keep the weeds and slugs away.

Some volunteers recently enjoyed a barbecue in beautiful evening heat. Great fun!



PICK UP A VEG BOX BUY FROM THE STALL

All of our organic vegetables are either grown at The Growing Project in Pensilva or supplied by local organic growers.

You can buy directly from our outside stall, 7 days a week 24 hours a day - money in the letter box.

Or order a box from us: large box £11, or smaller box £8.50.

If ordering, please place your order by midday Monday.

Collect your box on Wednesdays, 1 pm to 1.30 pm, or we can deliver within 5 miles, £2 donation

Volunteers welcome!

We are looking at increasing our group of volunteers.

Do you have half a day to spare, to join a happy team, contribute your skills, learn new ones. Pop in on a Wednesday between 10 and 2 pm and find out more.

To order your box or for more info



07854353865



@thegrowingprojectpensilva

Visit the Growing Project: Higher Road, Pensilva, PL14 5NH

TEN PLUS YEARS OF WILDLIFE WATCHING IN THE PARISH OF ST. IVE

Since moving to the Parish at the end of 2009, I have been photographing and recording the wildlife I see at my home on the edge of Pensilva on a daily basis. This month I will talk about one of our most familiar birds, but one in steep decline...

...THE HOUSE SPARROW



2017
Female on
fat balls

2020
Male on
feeder



House sparrows are spasmodic visitors to my garden on the edge of Pensilva with times when they are daily visitors and times when they have not been seen at all. I see or often hear them more consistently when walking up into the centre of the village. If you hear loud chattering of what sounds like hundreds of birds in a bush, it is probably sparrows.

Although overall numbers are still comparatively high, the house sparrow population in England has declined by 60% since the 1970s when comprehensive monitoring of numbers began. (Figures from the R.S.P.B.) This decline is continuing at an alarming rate and is reflected across Europe. My own observations have shown numbers fluctuating from year to year. This may be because we have a nest site under our eaves which is sometimes used by sparrows and sometimes by blue tits. Years where numbers are higher tend to be those when the sparrows won the nest site and so stayed close by throughout the breeding season. This year has been a particularly bad one with only 2 days with a sparrow sighting at home since the start of the year!

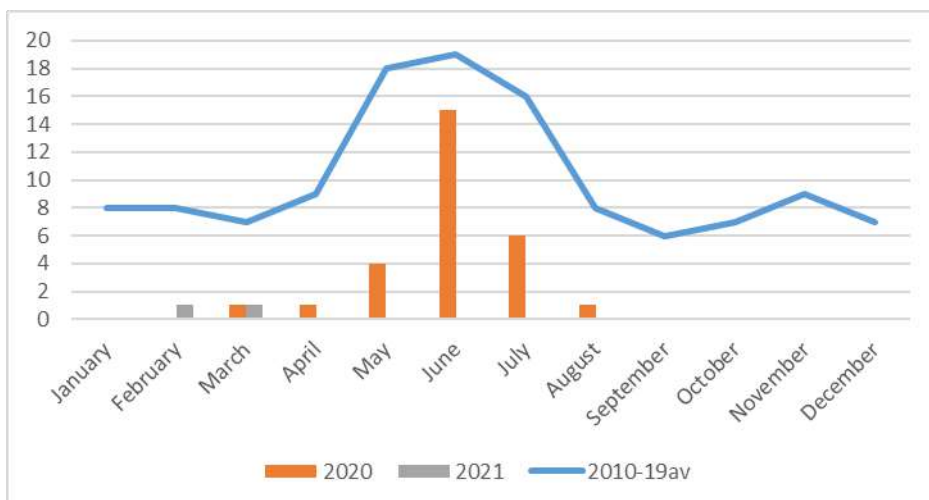


Chart of the number of sightings per month of House Sparrows since 2010

The reasons for the decline are not altogether clear, although changes in agricultural practices have been cited as a possibility. There has also been a decline in the number of young surviving and some studies have shown an improvement when dried mealworms are provided at feeding stations. This might indicate that their decline is linked to the steep decline in insect numbers, which may well be linked to climate change. It also shows a way in which we all might be able to help.

The different markings of the male and female are a sure sign that the better camouflaged female incubates the eggs while the male provides her with food. The male's more striking markings are designed to attract a mate.

When they do come to our garden, sparrows feed mainly from the seed feeder, as well as drinking and bathing in the bird bath or, more often, the pond. In hot dry weather, they have also been observed taking a dust bath on the steep slope beside our house, like this male and female below.



The sparrow is an unassuming little bird which is widely distributed across the world. It's reputation as a common and unspectacular bird (to our eyes!) has made the problems it is obviously facing easy to miss. Interestingly, on visits to The Scillies, we have noticed that the isolated population there is absolutely thriving. Perhaps there is a lesson to be learnt from this?

In the meantime, I will be adding mealworms to the menu in the breeding season in the hope that this will help them. Perhaps you will join me - or perhaps you are a step ahead of me?

HAPPY WILDLIFE
WATCHING!

HILARY



AGEUK Electric Vehicle

Do You Require Transport to and from the Doctors or Hospital?

AGEUK secured European Regional Development (ERDF) funding to contribute towards the purchase of 6 fully accessible Electric Vehicles. These have been purchased and are ready to be used by local groups & the Cornish community. The aim is to connect local communities and reduce social isolation using environmentally-friendly transport solutions. The vehicle situated at Millennium House Pensilva can be used by individuals or community groups, for hospital visits, outings etc. It can carry a wheelchair, and there is a barrier between driver and rear passengers for COVID isolation.

Anyone with mobility issues, including wheelchair users, who is unable to drive to an appointment, can contact Millennium House on 01579 362919 or 01579 363096 and we will endeavour to help.

Are you jam or cream first?

Sponsored by:
30
Celebrating 30 Years
Happy Days
Where Children Shine

Raising money for local families one scone at a time

Celebrate 30 years of caring for local families by hosting a cream tea, and help to raise vital funds for the future.

Register for your free fundraising pack
www.chsw.org.uk/creamtea

THE BIG SOUTH WEST
cream tea
Celebrating 30 years
children's hospice SOUTH WEST

Thank you
Thank you
Thank you

Making the most of short and precious lives across the South West
Registered Charity No. 1003314

mnda

motor neurone disease
association

All proceeds to the
Cornwall Motor Neurone
Disease Association!

mnda

motor neurone disease
association

APPEARING LIVE IN CONCERT

BEACH BOYZ
Tribute Band

PRESENTS

The Beach Boys[®]
Tribute Show

Beach Boys Tribute Band is the gold standard in any way with the original The Beach Boys

“ The Top Tribute of the Year! ”

THE THEATRE TOURIST

OVER 30 BEACH BOYS HITS PERFORMED 100% LIVE

SATURDAY 4th SEPTEMBER 8.00PM. TICKETS £18
CARNGLAZE CAVERNS, LISKEARD. PL14 6HQ

www.carnglaze.com Tel. 01579 320251

In aid of **mnda**
motor neurone disease association

facebook beachboyztributeband
www.beachboyztributeband.co.uk

Book now by calling Carnglaze on 01579 320251 or at www.carnglaze.com

The Cornwall branch of the Motor Neurone Disease Association provides support for people living with MND and their families. We rely on fundraising events to finance this support. This year, we present our Beach Boyz Tribute Band night, rearranged from June of last year to Saturday **4th September 2021**. Join us at Carnglaze Caverns near Liskeard for a night of rock and roll and rich vocal harmony. By the end you'll be on your feet, cheering for more - it happens at all their concerts! Whether you've seen them before or it's your first time, the show is as exhilarating as ever.

Open to all

Permaculture

Regenerative agriculture

Nurture

Inspiring

Wildlife

Education

Connection

Earth Care

Pensilva Community

Local resilience

Future Generations

Farm

Everyone is valued

Whole Community

(Temporary name)

Improved Wellbeing

Would you like to see the creation of a community owned and community run smallholding?

Why? Over the past year an idea for a new project has been forming to grow more local food, local opportunities and a stronger community, with care for each other and our environment at its heart.

Where? Pasadena (Next to Pentiddy Community Woodland at the top of Attwood lane) thanks to kind support from Geoff and Carolyn Cox.

How? Co-creating with individuals and existing community groups, progress being guided at all times by local needs.

There will be plenty of opportunities for discussion and conversation when we are able to gather together, until then you can contact:

pensilvacommunityfarm@gmail.com

News from The Growing Project

The Growing Project is already very well-known to many in our parish, if nothing else from the many articles it has contributed to the Parish Pump over the years. For those who are not so familiar with it, it is a Community Interest Company, founded in 2011 by the late Ruth Wilson, where local volunteers grow and sell organic fruit and veg for the local community. At the same time it provides a safe space for the helpers to enjoy a beautiful, peaceful and healing environment.

About three or four years ago, The Growing Project inherited the one-acre site in Pensilva where it is located, but while the facilities there for growing produce are first class, the facilities for the people involved are very basic. So, The Growing Project has launched a crowdfunding initiative to help to finance the provision of electricity, running water, and some toilets. To find out more go to

<https://chuffed.org/project/the-growing-project-fundraiser>



Please help this 🪓 ground-breaking 🪓 local project!

Update: We have so far raised £1,418 towards our target of £10,000. Thank you to all who have supported us so far!

These traineeships are also available to young people in the Parish of St Ive.
Contact details in the blue box (bottom right) below.

Traineeships for 19-24 year olds in Looe



Finding it hard to secure a job or an Apprenticeship, but feel you need more guidance and experience? Have you thought of doing a Traineeship?

A Traineeship is a great opportunity for you to build up your skills and experience through a work placement to make you more employable.

Traineeships include Maths and English Functional Skills, Employability Skills and 70 hours voluntary work placement.

You will spend three days a week in our centre with two days per week on a work placement with a local employer.

The programme is delivered in small groups of up to 6 people in our central Looe learning centre.

To be eligible your highest existing qualifications must be at Level 3 or below.

New for 2021!
Opportunity for a 2 week work placement in Malaga, Spain.

For further information contact us on 01503 770752 or e-mail cornwallskills@wrecitd.co.uk

ST JOHN'S CHURCH, PENSILVA

Services for August 2021

Sunday 1st	11am	Rev Chloe Jones - Holy Communion
Sunday 8th	11am	Informal Service with Carol and Geoff
Sunday 15th	11 am	Anglican Morning Prayer with Geoff Cox
Sunday 22nd	11am	July recorded service
Sunday 29th		August recorded service

Masks must be worn and social distancing observed at all services.

For further details of the services held in St John's, or if you know of any illness or need in the village, please ring Geoff Cox on 362698 or Frances Tucker on 363718.

The Pensilva Memory Cafe enjoyed another pasty lunch in the barn at Pasadena in July, but have voted for a change to a cream tea in the barn for its August meeting.

MUST STEP PODIATRY

HCPC Registered podiatrist

Fully insured NHS experience

Kind and caring Home visits

All your foot care needs

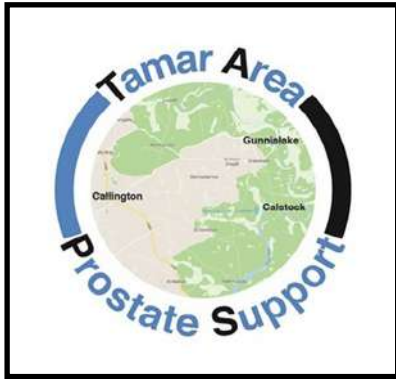
Most areas covered

Tel: 07522 577012 or 07561 608296

PENSILVA MEMORY CAFE

Like many village organisations, Pensilva Memory Cafe is unable to meet at present because of the Covid 19 precautions. We do, however, try to keep in contact with our members through the Sparkle, a news sheet telling of events in the past that happened during that month. It is entertaining and informative and guides thoughts back to those previous years, thus stimulating memories. We deliver a copy each fortnight.

If you have memory problems, or are looking after someone who does, and would like to make contact with this friendly group, call Geoff on 362698.



As with all local groups who meet regularly, COVID-19 knocked our plans sideways and we resorted to using Zoom. But with light finally on the horizon (better than at the end of the tunnel) we are hoping to restart our face-to-face meetings later this year, at Callington Town Hall.

In the meantime, we have created a new website which carries news of our Zoom meeting dates, speakers, copies of all editions of our newsletter "The Faucet", and how to make contact with the TAPS team, as well as other useful information.

If you are recently diagnosed and just want to have a chat about your treatment or your options, we encourage you to get in touch.

Find us at: -

Website: <https://www.tamarareaprostatesupport.org/>

Email: tapsinfo555@gmail.com

Phone: Chris on 01822-834797

PENSILVA VILLAGE HALL

Due to the Coronavirus outbreak all activities in the hall are cancelled until further notice.

Anyone wishing to book the hall for future meetings, birthday parties or fundraisers please contact Peter or Jackie Browning on **01579 363212** or email **peterpensilva@gmail.com**

Please note that as well as hall rent there is a coin meter for heating at 60p/hr.



MOBILE LIBRARY

The County Mobile Library is back. It visits our area once a month on Fridays of "week 3" (not necessarily the 3rd Friday of the month).

Next visits: **Aug 27.**

Stops at The Victoria Inn, Pensilva, 10.25-10.45am; Quethiock bus stop 11.00 to 11.20am.



Struggling with Sight Loss?



iSight Cornwall offers practical help to people living with sight loss in Cornwall including:

Low Vision: Advice for low vision aids

Assistive Technology: Advice on products

Benefits Advice: Assistance to claim entitlements

Equipment Demonstration: Advice on gadgets

Social Clubs & Activities: Links to clubs & activities in the county

For more details Telephone 01872 261110 or visit

www.isightcornwall.org.uk

Bargain Corner Free Ads up to £50

Ads are free for items up to £50. £5 charge for items over £50. Please ring the Parish Office on **01579 363096** or leave a note at Millennium House reception or email parishpump@btconnect.com.

*****Please let us know when your item has sold*****

***** NEW ITEMS *****

Petrol lawn mower, approx 19 ins, in working order. **£30**

Crockpot slow cooker, hardly used, excellent condition. **£10**

01579 363573

Approx. 2,200 **copper disc rivets for fibre cement roof slating**. **£10**.

5 Medium size **Kit Bags** in reasonably good condition (no cords). **£25** the five.

Set of 5 collectable **Meerkats**. VGC with certificates. **£30** the set of 5 or **£10** each.

2 large size lightweight camouflage military jackets **£5** each. **Tel 01579-384658**

Wheel & Tyre. New. Size 195/50 R15. **£50. 01579 383054.**

Canon IP2700 **Printer**. **£20**

Computer screen 19" **£20.**

Epson Perfection v350**Scanner** Photo **£20**

Sony Revia 42" **TV**. **£45.**

All in working order. **01579 363200**

Set of 3 **suitcases**, red, vgc, Antler, **£40** ono. **07770 747353.** Pensilva area

Set of **Snow chains**, new and unused fit 14" to 19" rims, self adjusting. **£40**

Pensilva **01579 362207**

2 x Medium Weight **Car Ramps** **£20.**
Push Mower **£5. 01579 363199**

Maximuscle **home gym** system **£100** ono.
Black leather **chaise longue**. Excellent condition. **£100** ono.

Scelextric Sport Le Mans set. Still in box. Great condition. **£100.**

Plastering gear: 110v paddle mix with transformer, various trowels, hawk and other bits. Good for DIY etc. **£70** ono.

Easycamp Tour Ligata **6 berth tent**. Used only 3 times. **£100** or offers.

Dark brown **leather chair**. **£50**

07980 380224 - Pensilva area.

Brown speckled **carpet**, 2m x 5m. Brand new (over ordered). **£50.**

Arch design **headboards**. **£20** each or **£35** pair. **01579 362211**

PLEASE LET US KNOW WHEN YOUR ITEM HAS SOLD

ADVERTISING SECTION

Please support our advertisers!

Important security message for advertisers:

We have been contacted by an advertiser regarding a hoax caller who had obtained the telephone number from the Parish Pump. The caller claimed to be from the Fire Service and offered to place the same ad seen in the Pump in the Fire Service magazine. Our alert advertiser realised that this was a scam and reported the incident to the Police. Please be aware that fraudsters may be using information from advertisements in local newsletters to defraud advertisers. Thank you.



TRADITIONAL STONE SERVICES
CLASSIC & TIMELESS STONE MASONRY AND LETTERING
MEMORIAL CLEANING
COMMISSIONS TAKEN
01579 363693 OR 07507 782282

Debbie Hicks - Counselling and Psychotherapy

Caring, confidential counselling for all.

I work in a therapeutic relationship to help you understand yourself better.

I offer a warm, approachable, relaxed environment for you to untangle your thoughts and emotions.

More info on my website or by contacting me.

www.debbiehickscounselling.co.uk

Email: debbiehicks10@gmail.com

07851 133782



I'm a domestic cleaner
with over 25yrs
experience and I am
looking for local
customers.

DBS checked!

References available on
request!!

Mobile 07818044195

Margaret300gregory@
btinternet.com.



FOR ALL YOUR CELEBRATION NEEDS

Visit our shop: 12 Fore Street, Callington

Call us on 01579 384386

Find us on Facebook or visit our website:

www.victoriaeyton.co.uk

- Helium Balloons - Balloon Arches -
- Bespoke Balloon Designs -
- Personalised Balloons - Partyware -
- Huge selection of greetings cards -
- **Weddings, Parties and Corporate events catered for.**

DOG GROOMING

40 YEARS EXPERIENCE



**SMALL and MEDIUM Dogs
Groomed to Your Request**

**LISKEARD AREA
Inquiries Welcome**

**Call Patricia: 07517 658862
TO YOU OR TO ME**



Domestic Electrical
Property Maintenance
Interior & Exterior Work
Carpentry :: Decking
Kitchens :: Bathrooms
Wall & Floor Tiling
General Plumbing

MCCARTHY PROPERTY MAINTENANCE

**Electrical Safety
Register** incorporating
ELECTSA  ECA
Certification Ltd

**HIGHLY REGARDED LOCAL BUILDER
COMPETITIVELY PRICED
COVERING THE SOUTH WEST**

Contact Dominic

07968 599 675

01579 362 945

info@mccarthypropertymaintenance.co.uk

www.mccarthypropertymaintenance.co.uk



Liskeard Home Improvements

Complete property refurbishment & building maintenance

- Tiling specialist
- Decorating & wall papering
- Carpentry
- Plastering & dry lining
- Plumbing & electrical
- Bathrooms - wet rooms - kitchens



H: 01579 362006 M: 07889 218710 E: scottberridge@me.com

liskeardhomeimprovements.co.uk

JPH plastering and Rendering

Internal plastering

Internal and external rendering

Internal/external painting & decorating

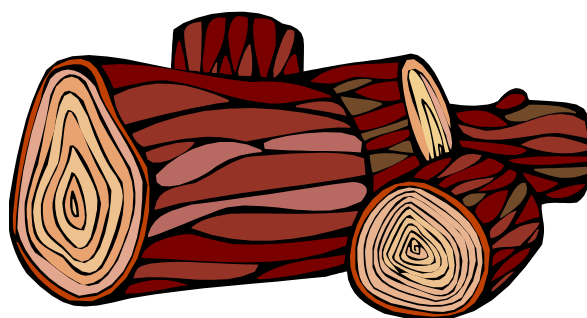
Property maintenance

Landscaping and land management

For estimates and no obligation quotes
contact Justin on:

07539 296799 or @ JPH garden
and home maintenance.

SEASONED LOGS



MIXED LOAD

or

HARDWOOD

Tel. Jonathan

Mobile **07966 070725**

or

PENROSS

Rosecraddock Lodge Holiday Bungalows
(Between Pensilva & Liskeard)

Ideal for family & friends coming to visit!



Refurbished in 2018. Sleeps 4. Electric, heating, bedding & towels inc in rent. Patio. Free wi-fi. Follow us on Facebook.

Sorry no pets or smoking.

Contact Julie Tucker on 01579 362221 or

email penhargetfarm@gmail.com

for 15% discount

NICOLA GREENE

BSc (hons) Podiatry MChs

HPC Registered Chiropodist/Podiatrist

**Home Visit Practice treating all
your foot care needs:**

- Nail Cutting
- Corns and Calluses
- Thickened Nails
- Dry Cracked Skin
- Verrucae
- Foot Pain
- Diabetic Foot Assessments
- Wound Care

T: 01579 590027

M: 07786164205

E: nicki_greene@yahoo.com

JUST IN STONE

Maintaining and preserving our
countryside for the benefit of all

Dry Stone Walls

Cobblestoning

Stone faced walls

Hedgelaying/steeping

Land management

All aspects of Landscaping

Mobile: 07539 296799

Email: just.in.stone@outlook.com

Tom Marshall

TM Plastering

Plasterer and Property Care

07544819284

Tommarshallcornwall@gmail.com

Free estimates

- Internal plastering
- Internal / external rendering
- Damp proofing
- Stud Walls
- Patio laying
- Chimney repairs
- Pointing
- Painting

Debbie's Care Services Recruitment Agency

Tel. 0777 948 3230

Hello, my name is Debbie. I am a local lady who has been working in the community for over 30 years. I run a Care Recruitment Service placing fully trained carers into community care roles.

We provide the following services and more!

- Assisting bathing / showering
- Preparation of meals
- Cleaning / Shopping / Ironing
- Companionship / Friendship and emotional support
- Assisting with mobility
- Day, Evening and Night Care

DO YOU NEED A HELPING HAND?

Reliable, friendly,
experienced, mature
local resident offering
the following services:



Cleaning Ironing

Shopping Light Gardening Dog Walking

CRB/DBS checked and fully insured. Competitive rates.

Contact Jess: Telephone or text: 07934 764 327.



Email: homeangel77@yahoo.com. Find us on Facebook

Matt's Windows

**Repair of Windows, Doors
& Glass Unit Replacement**

T: 01579 641228

M: 07533 387368



PENSILVA GARDENER

**20 years experience in Garden
and Countryside skills.**

All garden work undertaken.

Call Chris on 01579 383047

or 07792 936413



KV Accounting Solutions

ACCA

Local Accountant offering fixed fee accounting services

With over 20 years experience, I am a fully qualified, friendly, local accountant

- | | |
|---|--|
| ✓ Annual Accounts for Sole Traders and Partnerships | ✓ Self Assessment tax returns |
| ✓ Book Keeping & Payroll | ✓ iXBRL tax filing |
| ✓ Personal Tax Planning | ✓ Tax investigation Fees Insurance |
| ✓ Company Accounts | ✓ Company Secretarial work |
| ✓ Business Support & Advice | ✓ Tax calculations for Sole Traders and Partnerships |

Kate Vaughnley FCCA - Chartered Certified Accountant
Website : www.kvaccountingsolutions.co.uk or Email : katevaughnley@gmail.com
Telephone : 01579 364083



Gas Services
NATURAL GAS - LPG - OIL
BOILER INSTALLATION
BOILER SERVICE & REPAIR
LONG WARRANTY FREE QUOTES
07859848288
bagasservices@outlook.com





GENERAL GARDEN & HOUSE MAINTENANCE

NO JOB TOO SMALL

Call to discuss your requirements.
NO OBLIGATION quotes given.

One off jobs or regular work catered for.

Here are some examples...

OUTSIDE

MOWING

HEDGE CUTTING

FENCE PAINTING

BOARDER WEEDING

PATIOS & DRIVES

CLEANED

INSIDE

WINDOWS CLEANED
INSIDE & OUT.

PAINTING

CLEANING

SHOPPING

IRONING

CALL ANDREW CARLIN

now on:

07407 323888

Thank you.



Affordable Counselling

Caring, confidential,
non-judgemental

- Increased confidence and self esteem
- Help to cope better at difficult times
- Improved relationships
- Clarify confused thoughts & feelings
- Assertiveness
- Personal insight
- Improved emotional health
- Available for youth and adults

Isabelle McGarahan BA, PGCE
Dip in Therapeutic Counselling,
Accredited ACC, DBS cleared
www.im-counselling.org email:
isabelle@im-counselling.org
01579 344090/07857326229



P BRADLEY PLUMBING & HEATING

Email: info@pbplumbingheating.co.uk

Web: www.pbplumbingheating.co.uk

Facebook: @PBradleyPlumbingandHeating

NO JOB TOO BIG OR SMALL

24hr Emergency Call Out

Based in Liskeard

Call Today 07598956760

***"The complete bathroom
installation service"***

**New bathrooms fitted,
floor and wall tiling specialist**

General Plumbing including:

- Bathroom makeovers
- Dripping taps and burst pipes
- Pump and cylinder changes
- Radiator upgrades and additions
- Specialist in Leadwork
- No job too small
- No Call out charge



W. Hale
Plumbing

Friendly Service, Quality Work

NO VAT

**City and Guilds Qualified
established 1983**

Call William Hale on

Tel: 01579 362132 Mobile: 07826 699719



Kiln Dried Firewood
Kindling & Firelighters
Eco Heatlogs
LPG Bottled Gas
Patio, BBQ & Camping Gas
Coal & Smokeless Fuel



0800 8021 223
sales@loganslogs.co.uk
www.loganslogs.co.uk

Heel 2 Toe Footcare

Tired Aching feet.

Corns, Hard skin, Verruca.

Fungal infected toe nails, or
toe nails require cutting.

Diabetic feet also treated and
regularly checked.

I can help to keep your feet
looking and feeling good.

I am a trained Foot Health
Practitioner to Diploma Level, fully
insured & DBS checked.

I can do home visits via an
appointment.

Call Penny: **07746 926146** for
further information. **Please note
new number May 2021.**

MARK FITCH CHIMNEY SWEEP

- * BRUSH & VACUUM
- * CLEAN, RELIABLE SERVICE
- * COVERING ALL S.E. CORNWALL
- * DISCOUNT FOR MULTIPLE CHIMNEYS
- * COWLS & GUARDS FITTED
- * STOVES SERVICED



*Call
Mark on:*

01579 350762
07773 462643



QUALIFIED RAYNOR MASSAGE THERAPIST

RELAXING AND THERAPEUTIC MASSAGE TREATMENTS

Effective for many different types of chronic pain, sports injury, stress and tension related problems



CBD massage now available

APPOINTMENTS AVAILABLE AT

LISKEARD THERAPY CENTRE
LISKEARD PL14 3JB

THE WELLBEING CENTRE
LISKEARD PL14 6AT

Contact : Tina North

Phone : 07720 832322



Website : massage-therapy-cornwall.co.uk



R J Gardening & Handyman Services

All aspects of gardening and handyman work undertaken.

- ~Local and Trustworthy
- ~Hard Working
- ~Reliable and Experienced
- ~No job too small
- ~Competitive rates

Contact Raymond on:

07541 229064 or 01579 347622

raymond_pearcegb@yahoo.com

Find us on Facebook.



Fencing
 Paths & Steps
 Turf & Astro turf
 Driveways
 Retaining walls
 Digger work
 Footings & foundations

Patios
 Rendering
 Decking

And more

Free no obligation quotes

Call Rob on:

**07518246666 or
 01579 641802**

Window Cleaner Window Cleaner

Also any upvc cleaned

i.e. fascias, gutters, etc.

gutters cleared & unblocked

Please phone Rob

07709 053464

Window Cleaner Window Cleaner

Save Costly Energy!



SOLARTEC

Windows &
 Conservatories Ltd

**'A' Rated WINDOWS & DOORS
 at BEST PRICES EVER!**



Professionally fitted and finished by us with a
 10 year ins. guarantee.
 In all colours



NEW

**FACTORY SHOP
 SUPPLY ONLY**

For all your windows, doors, conservatories,
 fascia, trims, guttering and sealants

**7-10 DAY TURN AROUND ON WINDOWS,
 DOORS and CONSERVATORIES**

TEL: 01579 343425

FAX: 01579 344500

WEBSITE: www.solartecwindows.co.uk

EMAIL: sales@solartecwindows.co.uk

KEEPING JOBS IN CORNWALL

PJR Garden Services

Phil Rule

All aspects of garden
 work - grass / hedge
 cutting, patios, fencing
 etc.

Mobile 07387 449004



Group Travel

Day Trips & Coach Holidays

Enterprise Park, Midway Road, Bodmin, Cornwall PL31 2FQ

Coach Excursions & Tours 2021/2

14th September	Widcombe Fair
19th - 24th September	Visit Yorkshire
4th - 8th October	Visit Blackpool
13th October	Goosey Fair, Tavistock
19th - 22nd November	Turkey & Tinsel: Weston-Super-Mare
27th November	Exeter Christmas Market
4th December	Bath Christmas Market
19th December	Cornish Christmas Lights
19th December	London Int. Horse Show @ ExCel

Early 2022

12th March 2022	Crufts, The Worlds Greatest Dog Show
24th - 29th April 2022	Chester, Liverpool & the Beatles
30th April 2022	Toby's Garden Festival, Powderham
6th May 2022	Steam Train & Kents Cavern
19th May 2022	Cruise the English Riviera
8th - 9th July 2022	Hampton Court & Kew Gardens

Call: 01208 77989

for bookings or brochure

Visit our 2021 / 2022 Excursions Page on our website where you will find a link to download a PDF version of our brochure.



website: grouptravelcoachhire.co.uk

email: grouptravelcornwall@btconnect.com

facebook: facebook.com/grouptravelcwl

Martin Hoare – Local, Reliable, Competitive



WHEEL DIGGER FOR HIRE
ALSO AVAILABE 'BREAKER'
AND NEW CONCRETE
'CRUSHER BUCKET'

ALL AT COMPETITIVE RATES

GROUND WORKS
DRAINAGE
NEW DRIVEWAYS
SEPTIC TANKS &
'SOAK AWAYS' INSTALLED



LASER LEVEL FOR HIRE
QUOTES AVAILABLE



Phone 01579 363517

or

Mob 07863 291213



INDEPENDENT FAMILY FUNERAL DIRECTORS

Supporting families to arrange funerals with sensitivity, dignity and care.

- Flexible, caring approach, tailor-making funerals to suit your needs and budget.
- Open and transparent, affordable pricing.
- Free bereavement support sessions, open to all in our community, first Wednesday of the month, 10am - 12pm.
- Prepayment Funeral Plans available

For details of our services and prices, visit our website.



01579 362358 | www.fdhallfunerals.co.uk



Avalennek, Caradon Town,
Upton Cross, Liskeard
Cornwall PL14 5AR
Telephone 01579 363598
Mobile 07901 538132
chrisrounsevell@tiscali.co.uk

HOG ROAST EQUIPMENT HIRE AND MEAT SUPPLY

Hog Roasts For Those Special Occasions
Self Catering or Hassle Free Service
Everything done to your special requirements

CHRIS ROUNSEVELL
TRADITIONAL BUTCHER

Come and visit our recently updated
Tile & Bathroom showroom in PENSILVA

We offer a generous discount to all Pump Readers

Unit 24 Pensilva Ind Est, St Ive Road, Cornwall PL14 5RE 01579 362264



CORNWALL TILE
CENTRE

Pensilva Showroom

Open Mon - Fri 8.30am - 5pm
Saturday 9.00am - 1pm

Tiles & Mosaics for:

Bathrooms & Kitchens Living Areas Conservatories
Patios & External Areas Wet Rooms & Spas Swimming Pools
& All Commercial Applications

 atlas concorde

www.cornwalltile.com

OPEN FOR RETAIL, TRADE & COMMERCIAL ENQUIRIES

D.J.A. BUILDING SERVICES

ALL ASPECTS OF PROPERTY MAINTENANCE BUILDING & REFURBISHMENT

- * Bespoke Furniture and Kitchens
- * Wardrobes and Bookcases
- * Garden Sheds, Poultry Houses & Small Animal Shelters
- * Over 30 years' experience
- * Fully insured
- * References available
- * Free estimates
- * No VAT

Call David on 01579 364050 / 07767662635

Chiropodist

Fully qualified, experienced and insured Chiropodist/Podiatrist

- Nail cutting, corns/callus, diabetic foot care etc
- Personal home visits, groups and residential homes

**Contact Clare:
07757973709**



Westwood Garden Maintenance



Antony Watts

Grass Cutting, Clearance

Weeding, Turfing

Hedge Cutting

Patio Cleaning, Planting

Regular Visits / One-off Contracts

Residential & Commercial

FREE ESTIMATES

01579 362019 www.westwoodgm.co.uk 07952 094472



THE HOME OF WOOD

BULK DISCOUNTS AVAILABLE ON OUR 30 YEAR SERVICE LIFE POSTS



OUR GOLD TREATED STAKES AND POSTS ARE THE ONLY ONES AVAILABLE IN THE UK THAT ARE APPROVED BY THE WPA BENCHMARK FOR 30 YEAR SERVICE LIFE

For more information please contact one of our team



Bond Timber, Bake Sawmill, Trerulefoot, Saltash, Cornwall,

PL12 5BW

01503 240 308 stacy@whbond.co.uk

Pensilva Stores

Amazing Value

Premier
a great deal more from your local store
Mon-Sat. 7:00 AM. - 9:30 PM.
Sunday 8.00 AM. - 9:30 PM.

- ✓ Fantastic Special Offers every month!!! (See store leaflets)
- ✓ Come and Check out our great deals on Wine, Beer and Spirits
- ✓ Local Produce: Homemade Butter and Clotted Cream, Meat from our local butcher
- ✓ Cornish Fresh Fruit and Vegetables
- ✓ Fresh Bread, Pasties and Cakes
- ✓ Take Away Coffee, tea and hot chocolate
- ✓ Newspapers and Magazines, Greeting Cards
- ✓ Paypoint, Lottery

* **Free to use ATM** *

* **Card Payment** *

Friendly Staff + Service with a Smile !!!

Pensilva Stores is a family run business who have been serving local people and visitors for more than 21 years.

Higher Road, Pensilva, Liskeard, Cornwall PL14 5NQ

Tel: 01579 362547

MENDOLOGY

Garage Door Specialist

- Repairs
- Servicing
- Installations


Out of hours service
call Dave anytime 07974 442645

MENDOLOGY COMMERCIAL DOORS LTD
www.mendologydoors.co.uk

01579 363760

PensilvaCars

01579 363516

- ✓ MOTs Class 4
- ✓ Service
- ✓ Repair
- ✓ Tyres
- ✓ FREE Courtesy Car
- ✓ Car & Van Sales
- ✓ Diagnostics
- ✓ Air Conditioning
- ✓ 

We have offered a supply, fit & balance of tyre service for 10 years at competitive prices.

Most of our tyres can be supplied the same day.

LOCAL RECOVERY £45.00

www.pensilvacars.co.uk

pensilvacars@hotmail.co.uk

We can service and repair your car to manufacturer specification, keeping your dealer warranty without main dealer expense.





KEITH RICHARDS

Motor Body Repair Specialists

A family run business with fully equipped & maintained workshops & a focus on
Customer Care

- ◇ Motor Body Repair Specialist
- ◇ Mechanical Repairs
- ◇ Servicing to All Makes & Models
- ◇ Computer 4 Wheel Alignment
- ◇ 24 Hour Recovery Service
- ◇ Renovations & Re-sprays
- ◇ Member of RMI (Retail Motor Industry Federation)
- ◇ Latest Diagnostics (including specialists for VW, Audi, Seat,
Skoda & Vauxhall)

With over 30 years' experience we aim to provide you with:- Value for Money -
Friendly Service - Professional Approach - Expert Advice that you Can Trust
(Visit our website for more details)

Pensilva Industrial Estate, St Ive Road, Pensilva, Liskeard, Cornwall PL14 5RE

Tel: 01579 362593

Email: keith@keithrichardsmotorbody.co.uk

Fax: 01579 363194

Website: www.keithrichardsmotorbody.co.uk

Wm. Newham & Sons ^{Est. 1835}

Proprietor Robbie Savill AWCB

**CHIMNEY SWEEPS
& BLACKSMITHS**



CHIMNEY SWEEPING

BIRD GUARDS, COWLS & POTS FITTED

CCTV INSPECTIONS & SURVEYS

STACK REPAIRS & REBUILDS

RIGID STEEL SYSTEMS ERECTED

STAINLESS STEEL and PUMPED CONCRETE
CHIMNEY LINING

STOVES SUPPLIED, INSTALLED & REPAIRED

FIREPLACE ALTERATIONS & RENOVATIONS

FULL RANGE OF FIREPLACE FURNITURE
made to order

01579 347777

need somewhere to stay ?
between homes ?
family/friends visiting ?

Cutkive Wood

Holiday Lodges

ideal for Pensilva
& St.Ive

please call Jackie on
01579 362216

J. J. Child

Plumbing and heating engineer.

Oil appliance service, repair and breakdowns.

Over 30 years experience

Call John: 01579 362336 or 07837 921086



Pensilva Post Office

Located through the Café on the 1st floor of Millennium House



Opening times during lockdown:

Tuesday - 9am to 1pm

Wednesday - 9am to 12 noon

Friday - 9am to 12 noon

Note - The Millennium House coffee shop also open on these mornings.

The travelling post office at St Ive Institute is open on Wednesdays, 10:30-12 noon.

Saint Ive Parish tree-planting survey

Please let us know about any trees that you plant within the Parish. We will include them in our own survey and we will notify the Forest for Cornwall on your behalf, if appropriate.

Contact us by phone: 01579 383967, or by email:

parishpump@btconnect.com, or via the Saint Ive Parish

Climate Action Group Facebook page. Pictures very welcome.

