

# THE PARISH PUMP



June 2021  
Edition 475



## The Newsletter for the Parish of St Ives

Sorry, but the Parish Pump is online only, until further notice.



Covid vaccinations. Well done everyone involved everywhere, and especially at Millennium House!

## Disclaimer

The articles appearing in this magazine do not necessarily reflect the views of the Parish Council nor of the Parish Pump Editor.

## Parish Councillors Telephone List

Alan Moss (chair)	01579 362064	Ivor Vaughan (vice-chair)	07979 934604
James Bruce	07411 192645	Marlene Carr	01579 362919
Martin Corney	01579 382450	Sandra Doe	01579 363096
Rosemary Farley	01579 384810	Ron Greenhough	01579 363096
Tony Hodson	07973 536964	Nigel Libby	07968 891814
Paul Mann	01579 363757	Craig Vaughnley	01579 364083
Sharon Daw (Cornwall Councillor) 07837 379305 slash.dash.daw@gmail.com			

## Meetings of St Ive Parish Council

Meetings are now being held when possible. Please see the Parish Council website for meeting dates, agendas and minutes.

<http://st-ive-parishcouncil.gov.uk/minutes-agendas/>



Devon & Cornwall Police  
Building safer communities together

 **101**

Minicom 18001 101

## Police Community Neighbourhood Office

Your Community Support Officer is PCSO Steve Edser 30173.

email: CIOSNBMLiskeard@devonandcornwall.pnn.police.uk

To report a crime call 101 or go to [www.devon-cornwall.police.uk](http://www.devon-cornwall.police.uk)

In an emergency call 999

## Contact details for St. Ive Parish Council and for Millennium House

Address for correspondence: Millennium House, Century Square, Pensilva PL14 5NF

General Parish matters should be raised initially with the Parish Clerk, Jenny Hoskin, who will present them to the Parish Council.

Telephone: 01579 363096, email: [stiveparish@btconnect.com](mailto:stiveparish@btconnect.com)

For accounts matters for the Parish and for Millennium House contact John Body, Finance Officer: 01579 362102, email: [millenniumhouseadmin@btconnect.com](mailto:millenniumhouseadmin@btconnect.com)

Millennium House enquiries and reservations: 01579 363096  
email: [millenniumhouse@btconnect.com](mailto:millenniumhouse@btconnect.com).

On the web: Millennium House Website: [www.cornwallvenue.com](http://www.cornwallvenue.com)

Parish website: [st-ive-parishcouncil.gov.uk](http://st-ive-parishcouncil.gov.uk) Facebook: [facebook.com/stiveparishcouncil](https://facebook.com/stiveparishcouncil)

## Parish Pump Information and Contact Details

To contact the editor please email: [parishpump@btconnect.com](mailto:parishpump@btconnect.com)  
or phone the Parish office: **01579 363096**.

Hardcopy submissions by post or by hand to the Parish office, Millennium House.

Softcopy submissions: By email to the editor in MS Word, MS Publisher, pdf, Tiff or jpeg. Please use A4 pages and minimum 16 point font as the Pump is initially produced in A4 size and reduced to an A5 booklet at the printing stage. If in doubt please contact the editor.

**Current Advertising Prices** including VAT at 20%

Per issue:     Quarter Page £7.50             Half Page £15.00             Full Page £25.00

10% discount for 12 months paid in advance.

Bargain Corner free ads by email to the editor or drop off at the Parish Office.

**Deadline for the Parish Pump is STRICTLY 15th of every month**

## LOCAL BABYSITTER

Hi, my name is Megan and I live in Pensilva. I'm studying a level 3 childcare course at St. Austell College. I'm 17 years old and I'm available most evenings for child or baby sitting.

I charge £4.50 per hour for hours between 19.00 and 00.00.  
After midnight £7.00 per hour.

**Phone 07401 295024**

## From the Editor

If the state of the Covid epidemic can be measured in terms of the number of parish events that are reported on or advertised in the Parish Pump, then the dramatic increase in the number of such events this month must be an indication of something or other!

Let's see: Pentiddy Woods are doing a guided tour on the evening of June 8th, following hot on the heels of the Millennium House Café's grand reopening earlier the same day. There's a report on Pensilva Memory Café's pasty lunch last month, with a promised revisit this month. Children's Hospice SW are running their 'Rainbow Run Your Way' fundraiser mid-month, an individual challenge rather than their usual mass event, but I'm counting it. And advertised for July we have the Trevallicks Weekender on July 3rd and 4th, and Poltroon at Starts from July 6th to 10th. That may not be a particularly impressive list compared to pre-Covid days, when many pages were filled with notices and reports, but it feels to me like a dramatic increase compared to mainly nothing at all going on for more than a year.

Keep well - Joe

## *All Being Well*

Your local, friendly gym.

**We are open again, for three mornings a week and with limits on the number of members that can attend at one time.**

### Opening hours:

Monday, Wednesday and Saturday, 9am to 1pm.

Maximum four members at a time for each of three slots within each session: 9:00 to 10:20, 10:20 to 11:40 and 11:40 to 13:00

### **Prior booking is essential**

To book yourself in or for any enquiries, call in at the gym or telephone on **01579 363890**, during the opening hours listed above.

**Over 20 years working in our local community to improve health, fitness and well being.**

## Chairman's Report

On the 6<sup>th</sup> May a new Parish Council of 12 was elected unopposed and at our first meeting I had the honour of being re-elected as Chairman. On behalf of the Council and the community, I would like to thank Pete and Angie Haines and Kath Parkes for their contribution as councillors over the past four years, and to welcome three new councillors, Paul Mann, Ron Greenhough and Sandra Doe.

There are currently 12 Council positions filled which means there is one vacancy in the Pensilva Ward. Anyone wishing to apply for this position can apply in writing to the Parish Clerk at Millennium House, see details elsewhere in the Pump.

With the vaccinations at Millennium House now over I'd like to say, on behalf of the community and the Millennium House Management Committee (MHMC) how proud we are to have been able to support the NHS in their vital role by making available the Pensilva Community Centre 'Millennium House' and its staff.

We have received many messages of appreciation from members of the public, voicing their positive experience and their surprise at the facilities that Millennium House offers. Thank you also to the local community for their tolerance dealing with the increased traffic.

I have seen the comments regarding the concerns on Fore Street with vehicles exiting Middle Hill; Lower Middle Hill and Shute Lane. The previous council did discuss the situation with Cormac a few years ago without any commitment. We will however revisit the issue with them.

Alan Moss

Chairman, St Ive Parish Council

# St Ive Parish Council

Date: 10<sup>th</sup> May 2021

## **PARISH COUNCILLOR VACANCY – PENSILVA WARD**

A vacancy on the St Ive Parish Council (Pensilva Ward) has arisen due to insufficient candidates at the May elections.

The Parish Council now intends to fill this vacancy by co-option at its meeting to be held on the 14<sup>th</sup> June 2021.

For further information about the role of Parish Councillor and the co-option process please contact:

Mrs Jenny Hoskin

Parish Clerk

Email: [stiveparish@btconnect.com](mailto:stiveparish@btconnect.com)

Telephone: 01579 363096

## **MUST STEP PODIATRY**

### **HCPC Registered podiatrist**

Fully insured      NHS experience

Kind and caring      Home visits

### **All your foot care needs**

Most areas covered

**Tel: 07522 577012 or 07561 608296**

## TEN YEARS PLUS OF WILDLIFE WATCHING IN THE PARISH OF ST. IVE

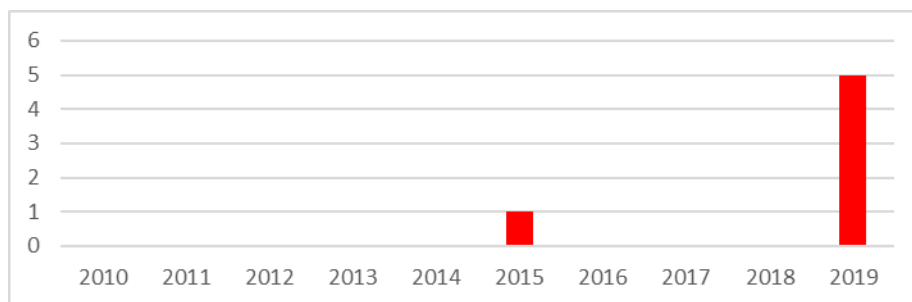
Since moving to the Parish at the end of 2009, I have been photographing and recording the wildlife I see on a daily basis. This month I thought I would talk about one of my rare mammal visitors:-

### THE HEDGEHOG



In my youth and into my children's childhood, hedgehogs were a common sight. Indeed there was a rather macabre running joke about the number of dead hedgehogs at the side of the roads as they would try to cross at night. At the time their numbers were so buoyant that this was not seen as a great problem. However, as you will probably have seen on television, they have gone from being one of our most common mammals to one of our most endangered in an alarmingly short time. With a house on the edge of the village bordering on woodland I thought I would be likely to see one, but as the chart below shows, I had to wait 5 years before seeing one at all, and the six sightings recorded below remain the only I have had. Indeed, surveys around the country have indicated that hedgehogs in towns and on housing estates seem to be doing better than those in the country. Therefore, those of you living further into the village may well have more luck than I have had.

#### Total number of days sighted per year from 2010 - 2019



The reasons for the rapid decline in hedgehog numbers is not clear and is probably due to a combination of factors. Obviously the road deaths did not help. Badgers too will predate hedgehogs and may in part account for their greater decline in the countryside. However the badgers have always been there and in the past did not do more than contribute to keeping their numbers in check.

countryside. However the badgers have always been there and in the past did not do more than contribute to keeping their numbers in check.

Hedgehogs hibernate in winter when the weather is bad, but may emerge during milder spells. They are also nocturnal, so should only be seen at the start and end of days. If you see one in the middle of the day, this is likely to mean that it is in trouble and needs to look for food instead of resting.

Our tendency to want to maintain neat gardens with neat borders can also be a problem for hedgehogs. They need large territories to flourish and fences which fit tightly to the ground, limit the area they can access. As an animal which eats slugs, they are definitely one worth the keen gardener encouraging! They also eat beetles and their droppings can look quite sparkly as they include the brightly coloured and shiny fragments of the wing cases of their last meal.

#### How can we help?

I am sure you will have seen programmes about "hedgehog friendly" streets and estates, where people have either provided tunnels under their fences or cut out hedgehog sized squares at the base. The Parish of St. Ive Community Resilience Project has been looking at what we might do here in Pensilva and St Ive. We know from local residents that there are some hedgehogs in the area and a good way to start would be to map where they are. As they are active at night, there may be more. One of the best ways to find out would be to conduct a survey. The best way to do this would be with mammal survey tunnels. These tunnels have paper lining the base and ink pads at either end. Dog or cat food is placed in the middle. This allows footprints on the paper to be interpreted with the help of a guide so that we can know whether a hedgehog has passed through. With this knowledge we could see where hedgehog 'doorways' in fences might help them to spread out their territories. In addition, we could identify where they are absent and where (if we create enough linked habitat) introductions could be considered with the help of a local hedgehog sanctuary.

#### So where do YOU come in?

1. Let us know if you have seen a hedgehog in the past 12 months.
2. If you have not seen them but would like to know if they are in your garden at night, get in touch and we can loan you a tunnel for up to a month or until a hedgehog is detected.
3. To make your garden more hedgehog friendly, talk to your neighbours and ensure that there is a suitable link between your gardens. Spread the word along your street!
4. If you want to put out food for them, put out dog or cat food (but not fish based), and water, but NEVER milk or bread.



#### **IF YOU WOULD LIKE TO HELP, PLEASE CONTACT:**

Barbara on 07933 960113 or 01579 383967 if you live in St Ive ...

... or Hilary on 01579 362539 if you live in Pensilva

**HAPPY WILDLIFE  
WATCHING!**

Hilary



## PENSILVA MEMORY CAFÉ

At last, with great joy, on a beautiful day, the Pensilva Memory Café met for the first time for well over a year. Thirty of us met for a Pasty Lunch with drinks and desserts out of sealed containers.

The Government guidelines were followed with sanitising and safe distancing observed. The meeting was in an open-fronted barn so, apart from a roof in case of rain, it was out in the open.

The traditional reading of the "Sparkle", the Memory Cafe newssheet, and a number of verbal quizzes took place after the consumption of our pasties, providing some well-needed social interaction for all. We now look forward to our next meeting in June, when we plan to do it all again!.



# THE Growing Project PENSILVA

## GROWING PROJECT NEWS

Three new beds are being prepared to be filled with squash, pumpkins and brassica. Strawberries are in flower, so have the soft fruit shrubs and the Cornish apple trees. Onions and spring onions have been planted and are growing well. The two tunnels keep surprising us with their amazing growth - tomatoes, peppers and the first broad beans have been picked. Peas will soon be delighting our palates. Tasty salad leaves, kale, spinach have been available in the veg. boxes and in the outside stall. The physalis has a dozen fruits!

**Volunteers are very welcome!** Want to find out whether joining the happy team is for you? Just pop in, we'll show you around and tell you about what it involves.



## PICK UP A VEG BOX

All of our organic vegetables are either grown at The Growing Project in Pensilva or supplied by local organic growers.

You can buy directly from our outside stall, 7 days a week 24 hours a day - money in the letter box.

Or order a box from us: large box £11, or smaller box £8.50.

If ordering, please place your order by midday Monday.

Collect your box on Wednesdays, 1 pm to 1.30 pm, or we can deliver within 5 miles, £2 donation appreciated.

## WANTED

An enthusiastic craftsperson happy to give his/her skills and time to build a new outside stall in great need of renovation. Materials provided.

To order your box or for more info



07854353865



@thegrowingprojectpensilva

**Visit the Growing Project:** Higher Road, Pensilva, PL14 5NH



## Rev Becca Bell

This is a very exciting month because this is the month we receive our new curate!!! Li wrote an article a few months back introducing herself but in case you missed it...

Li has been a primary school teach and is also a musician, cricket fan, mum, and wife. She is to be ordained deacon at the end of June in Truro Cathedral. Sadly we can't all pile down to watch her because of covid limiting numbers, but there will be a link to watch it on line and I know she'd appreciate your support.

Curacy in the church of England is a bit like being a newly qualified teacher. You have various practical things to do (like weddings and sermons and chiring PCC meetings), and also lots of reflective learning to do. At the centre of all of this is prayer. What a curate is NOT is an extra pair of hands!! Gone are the days when the curate is given the jobs no one else will do like running the youth group (actually that's one of my favourite jobs!!) or tidying up after the raucous pensioners tea!!

Curacy is about taking time to get used to the dog collar and inhabiting a very public ministry. It's actually quite hard having a role where you know folk have opinions of you that may be completely unfair and unfounded... but that is a part of the reality of being a parish priest. As are the expectations that are often rooted in an outdated view of ministry; like assuming that the priest should be at all public engagements and gatherings. These days, with 6 churches across 4 parishes, it is not physically possible to be present in the way a parish priest once was. One of the things curates begin to learn is how to manage these expectations and respond to them.

I have no doubt that Li will be an amazing gift to us. She comes with a deep rootedness in prayer, and fab sense of humour, and is a great listener... but actually the way that curacy works is that we need to be a gift to her. We need to give her a loving and supportive context in which to grow and flourish in her ministry.

We need to pray for her. We need to support her when she leads events or groups. We need to give her family privacy (only approach the vicarage by appointment, or to leave gifts like cake on the doorstep!!).

We are really lucky that Li comes to us with years of experience in ministry already, and having spent a placement with us, we know she fits right in! Over the first few months she will spend most of her time meeting people and listening to get to know our 6 communities. I remember how exhausting yet how lovely it was for me... and that was without clotted cream featuring regularly!

So please do welcome her warmly (as I know you will!), and invite her to join groups and activities to get to know people but don't be surprised if she has to say no!! 6 gardening clubs, 4 schools, 6 churches, 3 village shops, 5 pubs, a snooker club, several book groups, loads of community halls with knit and natter groups, toddler groups, pre schools.... there's a lot to get to know and even I haven't managed it all in nearly 2 and a half years!! (although over a year of that has been in lockdowns). But the invite is much appreciated and makes it far easier to turn up and meet a group of strangers.

Li is going to be living in the vicarage in Menheniot, but because of extensive work needed to bring the interior up to date this won't be until after she starts work. However, I am hoping we can put together a lovely big hamper of luxury food and drink for her and the family when they do move in. Please feel free to smuggle items into church when we meet on Sundays and I'll start collecting it together. We'll leave it in the vicarage ready for when she moves in!

It seems wonderful that, just as we emerge from a challenging year, and have more challenges to face in terms of discerning our future as a cluster and as individual parishes, we also have Li arriving amongst us. It really is a time of new beginnings and lots of hope.

*Open to all*

*Permaculture*

*Regenerative agriculture*

*Nurture*

*Inspiring*

*Wildlife*

*Education*

*Connection*

*Earth Care*

# Pensilva Community

*Local resilience*

*Future Generations*

# Farm

*Everyone is valued*

*Whole Community*

*(Temporary name)*

*Improved Wellbeing*

## Would you like to see the creation of a community owned and community run smallholding?

**Why?** Over the past year an idea for a new project has been forming to grow more local food, local opportunities and a stronger community, with care for each other and our environment at its heart.

**Where?** Pasadena (Next to Pentiddy Community Woodland at the top of Attwood lane) thanks to kind support from Geoff and Carolyn Cox.

**How?** Co-creating with individuals and existing community groups, progress being guided at all times by local needs.

There will be plenty of opportunities for discussion and conversation when we are able to gather together, until then you can contact:

**[pensilvacommunityfarm@gmail.com](mailto:pensilvacommunityfarm@gmail.com)**

## A guided tour of Pentiddy Woods

Tuesday the 8th June, 7- 9pm.

To include all aspects of our lifestyle as we try to live with the well-being of people and planet at the heart of all we do. From off-grid living, to food growing and fermenting, cheesemaking to green building, coppicing and charcoal burning.

The tour will also include the natural burial site and the potential new community farm idea on the neighbouring land. At the end of the tour there will be an opportunity to sit round a campfire at the roundhouse and chat. You would be very welcome to bring your own drink.



Donations for the setting up of the new project would be gratefully received. Places are limited so please book by contacting us on [info@pentiddy.co.uk](mailto:info@pentiddy.co.uk).

## ST JOHN'S CHURCH, PENSILVA

*Services for June 2021*

Sunday 6th 11am Rev Sue Hill

Sunday 13th 11am Informal Service with Geoff Cox

Sunday 20th 11 am Rev Becca Bell

Sunday 27th 11am Rev Sue Hill

Thursdays at 10am there will be an informal time of worship and prayer.

All welcome.

**Masks must be worn and social distancing observed at all services.**

For further details of the services held in St John's, or if you know of any illness or need in the village, please ring Geoff Cox on 362698 or Frances Tucker on 363718.

**MILLENNIUM HOUSE COFFEE SHOP**

**GRAND REOPENING.**

**TUESDAY 8<sup>TH</sup> JUNE**

**INITIALLY OPEN POST-OFFICE DAYS,  
TUESDAYS; WEDNESDAYS AND FRIDAYS.**

**9 AM – 1 PM**



**COMPLIMENTARY HOT DRINK AND CAKE TO  
WELCOME YOU BACK.**



Sponsored by:

The Exeter

ANN'S  
COTTAGE  
300, HOPES  
CORNWALL  
annscottage.com



children's hospice  
SOUTH WEST

Celebrating

30  
years

rainbow  
RUN  
your way

Children's Hospice South West (CHSW) is excited to announce plans for its Rainbow Run Your Way fundraiser on 19 – 20 June 2021.

Rainbow Run has become an event synonymous with sunny days and explosions of colour across three different locations in the south west including RAF St Mawgan in Newquay. Last year due to COVID restrictions the event went virtual and still raised £100,000 for the charity. This year participants will be encouraged, once again, to take on the Rainbow Run in their own way.

Open to absolutely anyone, CHSW is encouraging participants to pick a route of any distance and complete it however they wish. It will be a chance to don a bright outfit and complete your distance by running, skipping, walking, skating or riding and have fun along the way. The aim will be to raise £30,000 for each of the charity's three children's hospices, including Little Harbour in St Austell. A poignant target to reach for the charity's 30<sup>th</sup> anniversary year.

This free, fun and very colourful fundraiser is kindly being sponsored by Ann's Cottage and The Exeter, and is a fantastic way to show your support for CHSW in its Anniversary year. It will also mark the start of national Children's Hospice Week. Kiley Pearce, Event Fundraiser at CHSW's Little Harbour said; "We were overwhelmed by the amount of people that got involved last year. We could see from social media that everyone really embraced the fun and colour that Rainbow Runs are all about. To be able to raise £30,000 for each of our hospices in our 30<sup>th</sup> anniversary year really would help us to ensure that local children and families can continue to receive the vital care they so desperately need now and in the future." It is free to take part in this event but CHSW encourages everyone to register on its website to ensure they have access to event information and free resources. If participants raise £15 or more in sponsorship they will be sent a 30<sup>th</sup> anniversary commemorative medal after the event.

For more information and to register visit [www.chsw.org.uk/rainbow](http://www.chsw.org.uk/rainbow)



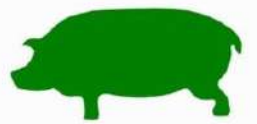
Making the most of short and precious lives across the South West  
[www.chsw.org.uk](http://www.chsw.org.uk)

Registered Charity No. 1003314





# THE TREVALICK'S



## WEEKENDER

### 3RD & 4TH JULY



### VINTAGE TRACTORS



### & CARS



### LIVE MUSIC BOTH DAYS



### BIG GREEN EGG BBQ



### TREVALICK'S BAR



### FUSION CYCLE'S ELECTRIC

### BIKES



### FACE PAINTING



### CRAFT STALLS



### GIN TASTINGS

### ANIMAL CORNER

NO ENTRANCE FEE, PARKING CHARGES DONATED TO CHARITY.

EXTRA PARKING WILL BE AVAILABLE

FOR STALL ENQUIRY'S PLEASE CONTACT

TREVALICKSEVENTS@GMAIL.COM





the arc presents

# Poltroon

a play by simon parker  
directed by ellic mcraflane



from the team that brought you *third light* and *gonamena*  
a bittersweet cornish story of lasting male friendship  
july 6 7 8 9 (7.30pm) 10 (2pm + 7.30pm)  
food and drink and live music from 6.30pm  
book your tickets by calling starts on 01579-362382  
or visit [www.starts.co.uk](http://www.starts.co.uk) facebook: @poltroon

## Starts - July 2021



national lottery  
ARTS COUNCIL  
ENGLAND

graciously supported by



# News from The Growing Project

The Growing Project is already very well-known to many in our parish, if nothing else from the many articles it has contributed to the Parish Pump over the years. For those who are not so familiar with it, it is a Community Interest Company, founded in 2011 by the late Ruth Wilson, where local volunteers grow and sell organic fruit and veg for the local community. At the same time it provides a safe space for the helpers to enjoy a beautiful, peaceful and healing environment.

About three or four years ago, The Growing Project inherited the one-acre site in Pensilva where it is located, but while the facilities there for growing produce are first class, the facilities for the people involved are very basic. So, The Growing Project has launched a crowdfunding initiative to help to finance the provision of electricity, running water, and some toilets. To find out more go to

<https://chuffed.org/project/the-growing-project-fundraiser>



Please help this 🪓 ground-breaking 🪓 local project!

**Update: We have so far raised £1,418 towards our target of £10,000. Thank you to all who have supported us so far!**

**These traineeships are also available to young people in the Parish of St Ive.**  
Contact details in the blue box (bottom right) below.

## Traineeships for 19-24 year olds in Looe



Finding it hard to secure a job or an Apprenticeship, but feel you need more guidance and experience? Have you thought of doing a Traineeship?

A Traineeship is a great opportunity for you to build up your skills and experience through a work placement to make you more employable.

Traineeships include Maths and English Functional Skills, Employability Skills and 70 hours voluntary work placement.

You will spend three days a week in our centre with two days per week on a work placement with a local employer.

The programme is delivered in small groups of up to 6 people in our central Looe learning centre.

To be eligible your highest existing qualifications must be at Level 3 or below.

**New for 2021!**  
Opportunity for a 2 week work placement in Malaga, Spain.

For further information contact us on 01503 770752 or e-mail [cornwallskills@wrecitd.co.uk](mailto:cornwallskills@wrecitd.co.uk)

## WHERE to RECYCLE Your PLASTICS



### *Recycling for Charity*

Recycling household items that our council don't collect, we send these items to be recycled and raise money for our charities.

- Medicine blister packs
  - Bread loaf bags that are stretchy
  - Cheese packets & Baby Bel nets & wax
  - Crisps & all snacks packets
  - Baby food and washed Pet food pouches
  - Biscuit, cracker and cake wrappers
  - Sweet & chocolate wrappers
  - Toothbrushes & toothpaste tubes, soft tubes and pots of creams, gels, ointments.
  - Trigger sprays, hand pumps, roll on deodorants, LATEX style gloves & Marigolds
  - Cleaning wipes and dishwasher tablet packets & tubs, plastic air fresheners
- Used pens, felt tips and inkjet cartridges, mobile phones & plastic cases, cameras....



For a full list of what can be accepted visit [www.south-hill.co.uk/charity-recycling](http://www.south-hill.co.uk/charity-recycling) and see where your nearest collection point is and regular updates on [Facebook](#)

**The Recycling for Charity** trailer will be in **Pensilva** parked by St. Johns church on **May 8<sup>th</sup>** at **12noon until 12:20**

Thank you for your support Ali [SHARE@south-hill.co.uk](mailto:SHARE@south-hill.co.uk) 07305 044049

Helping to reduce your "rubbish" and helping our charities and planet.

TESCO stores in the SW including Launceston have added an extra in store collection alongside their carrier bags recycling cage. The additional cage is for "soft" plastics, ie not hard/rigid plastic, so this includes crinkly plastic from:

- some fruits n veg, salad items, peppers, tomatoes, celery, spinach, apples
  - film off punnets of fruit and trays of veg & meat, the tray can go in your kerbside recycling
  - sleeves and film lids off yoghurt pots, the pots can go in your kerbside recycling
  - packets from sauces, coffee, tea, noodles, rice & pasta
  - cereals, muesli, granola & oats, dried fruit, sugar in plastic bags
  - bread bags that aren't stretchy, bread rolls, crumpets, thins & naan packaging
- pretty much all the food packaging that **RECYCLING FOR CHARITY** cannot take...

The cages are located in the lobby just before the exit in the Launceston store

Stretchy plastic can be recycled with carrier bags and include

shrink wrap from cans  
bubblewrap,  
postal bags  
frozen chips and peas packets  
spuds and some fruits and vegetables bags  
nets from fruit and garlic  
carrier bags.



*Tesco's director of quality, said: "Reducing and recycling plastics is such an important issue for us, for customers and for the future of our planet. That's why we are working hard to reduce the amount of packaging in our stores and have committed that all remaining packaging will be recyclable by 2025."*

## Could you or someone you know benefit from this Electric Vehicle?



**Age UK Cornwall and the Isles of Scilly** has generously provided an Electric Vehicle for use by people in South East Cornwall who have trouble getting around. The vehicle can be used by the public, not just for essential trips to doctors or hospitals, but also for shopping trips or even just for a day out.

### **This is how the scheme works.**

The electric vehicle (pictured) is based at Millennium House, Pensilva, where charging points have been installed, powered by Millennium House's photovoltaic roof panels. The vehicle is wheelchair friendly.

The vehicle can be used by individuals or by groups, such as doctors' surgeries, churches, charities, clubs or societies. Prospective users would need to register with Age UK: this costs £18 per year for individuals and £36 per year for groups.

Once registered, the group or individual can book the vehicle at very reasonable rates: £40 for a full day (9 hours). £25 for half a day (4 hours). Or 50p per mile for short trips, like visits to the doctor or dentist or local shopping trips. These contributions are donations to support the running and ongoing maintenance of the electric vehicle. The rates compare very favourably with the cost of taking a taxi. Users will not even need to pay for fuel and the range of the vehicle is such that recharging would not be necessary except for a very long trip. You just need to make sure that you plug back into the charging point on your return.

The person driving the vehicle on behalf of the registered individual or group must hold a valid UK driving licence. Age UK will provide a short training exercise covering wheelchair accessibility and vehicle familiarisation at a location to suit the volunteer. Electric vehicles are very easy and safe to drive. Five similar vehicles are based elsewhere in Cornwall.

More information, including terms and conditions and registration forms, can be obtained from Age UK on 01872 266388 or [email@ageukcornwall.org.uk](mailto:email@ageukcornwall.org.uk); ask to speak to Lee Davies or Ann Lewis.



Millennium House itself will be registering as a group and is looking for volunteer drivers who could spare some time to help others. Other parish or town councils in the area can do the same. To join the Millennium House volunteer drivers group, contact Millennium House on 01579 363096 or [stiveparish@btconnect.com](mailto:stiveparish@btconnect.com)

## PENSILVA MEMORY CAFE

Like many village organisations, Pensilva Memory Cafe is unable to meet at present because of the Covid 19 precautions. We do, however, try to keep in contact with our members through the Sparkle, a news sheet telling of events in the past that happened during that month. It is entertaining and informative and guides thoughts back to those previous years, thus stimulating memories. We deliver a copy each fortnight.

If you have memory problems, or are looking after someone who does, and would like to make contact with this friendly group, call Geoff on 362698.



As with all local groups who meet regularly, COVID-19 knocked our plans sideways and we resorted to using Zoom. But with light finally on the horizon (better than at the end of the tunnel) we are hoping to restart our face-to-face meetings later this year, at Callington Town Hall.

In the meantime, we have created a new website which carries news of our Zoom meeting dates, speakers, copies of all editions of our newsletter "The Faucet", and how to make contact with the TAPS team, as well as other useful information.

If you are recently diagnosed and just want to have a chat about your treatment or your options, we encourage you to get in touch.

Find us at: -

Website: <https://www.tamarareaprostatesupport.org/>

Email: [tapsinfo555@gmail.com](mailto:tapsinfo555@gmail.com)

Phone: Chris on 01822-834797

# Pensilva Post Office

Located through the Café on the 1<sup>st</sup> floor of Millennium House



## Opening times during lockdown:

**Tuesday - 9am to 1pm**

**Wednesday - 9am to 12 noon**

**Friday - 9am to 12 noon**

**Note - Back open on Wednesdays**

**The travelling post office at St Ive Institute is open on Wednesdays, 10:30-12 noon.**

## Saint Ive Parish tree-planting survey

Please let us know about any trees that you plant within the Parish. We will include them in our own survey and we will notify the Forest for Cornwall on your behalf, if appropriate.

Contact us by phone: 01579 383967, or by email:

[parishpump@btconnect.com](mailto:parishpump@btconnect.com), or via the Saint Ive Parish

Climate Action Group Facebook page. Pictures very welcome.



# Bargain Corner Free Ads up to £50

Ads are free for items up to £50. £5 charge for items over £50. Please ring the Parish Office on **01579 363096** or leave a note at Millennium House reception or email [parishpump@btconnect.com](mailto:parishpump@btconnect.com).

**\*\*\*Please let us know when your item has sold\*\*\***

## \*\*\*\*\* NEW ITEMS \*\*\*\*\*

**Petrol lawn mower**, approx 19 ins, in working order. **£30**

**Crockpot slow cooker**, hardly used, excellent condition. **£10**

**01579 363573**

\*\*\*\*\*

Approx. 2,200 **copper disc rivets for fibre cement roof slating. £10.**

5 Medium size **Kit Bags** in reasonably good condition (no cords). **£25** the five.

Set of 5 collectable **Meerkats**. VGC with certificates. **£30** the set of 5 or **£10** each.

2 large size lightweight camouflage military jackets **£5** each. **Tel 01579-384658**

**Wheel & Tyre**. New. Size 195/50 R15. **£50. 01579 383054.**

Canon IP2700 **Printer. £20**

**Computer screen 19" £20.**

Epson Perfection v350**Scanner Photo £20**

Sony Revia 42" **TV. £45.**

All in working order. **01579 363200**

Set of 3 **suitcases**, red, vgc, Antler, **£40 ono. 07770 747353.** Pensilva area

Set of **Snow chains**, new and unused fit 14" to 19" rims, self adjusting. **£40**

Pensilva **01579 362207**

2 x Medium Weight **Car Ramps £20.**  
**Push Mower £5. 01579 363199**

Maximuscle **home gym system £100** ono.  
Black leather **chaise longue**. Excellent condition. **£100** ono.

**Scelextric Sport Le Mans set**. Still in box. Great condition. **£100.**

**Plastering gear**: 110v paddle mix with transformer, various trowels, hawk and other bits. Good for DIY etc. **£70** ono.

Easycamp Tour Ligata **6 berth tent**. Used only 3 times. **£100** or offers.

Dark brown **leather chair. £50**

**07980 380224 - Pensilva area.**

Brown speckled **carpet**, 2m x 5m. Brand new (over ordered). **£50.**

Arch design **headboards. £20** each or **£35** pair. **01579 362211**

**PLEASE LET US KNOW WHEN YOUR ITEM HAS SOLD**



## **PENSILVA VILLAGE HALL**

Due to the Coronavirus outbreak all activities in the hall are cancelled until further notice.

Anyone wishing to book the hall for future meetings, birthday parties or fundraisers please contact Peter or Jackie Browning on **01579 363212** or email **peterpensilva@gmail.com**

Please note that as well as hall rent there is a coin meter for heating at 60p/hr.



## **MOBILE LIBRARY**

**The County Mobile Library is back.** It visits our area once a month on Fridays of "week 3" (not necessarily the 3rd Friday of the month).

Next visits: **June 4, July 2, July 30, Aug 27.**

Stops at The Victoria Inn, Pensilva, 10.25-10.45am; Quethiock bus stop 11.00 to 11.20am.



## **Struggling with Sight Loss?**



iSight Cornwall offers practical help to people living with sight loss in Cornwall including:

Low Vision: Advice for low vision aids

Assistive Technology: Advice on products

Benefits Advice: Assistance to claim entitlements

Equipment Demonstration: Advice on gadgets

Social Clubs & Activities: Links to clubs & activities in the county

For more details Telephone 01872 261110 or visit

[www.isightcornwall.org.uk](http://www.isightcornwall.org.uk)

# ADVERTISING SECTION

## Please support our advertisers!

### Advertisers please note:

Due to restrictions in place as a result of the COVID19 outbreak, the Parish Pump is currently being published online only. For as long as this situation persists, we will continue to run the ads placed by our regular advertisers FREE OF CHARGE. For those of you that have paid in advance, the end date of your advertising run will be extended accordingly.

New and occasional advertisers, please call the editor on 01579 364016 to discuss. Many thanks.

## TRADITIONAL STONE SERVICES

CLASSIC & TIMELESS STONE MASONRY AND LETTERING

MEMORIAL CLEANING

COMMISSIONS TAKEN

**01579 363693 OR 07507 782282**

### Debbie Hicks - Counselling and Psychotherapy

*Caring, confidential counselling for all.*

*I work in a therapeutic relationship to help you understand yourself better.*

*I offer a warm, approachable, relaxed environment for you to untangle your thoughts and emotions.*

*More info on my website or by contacting me.*

[www.debbiehickscounselling.co.uk](http://www.debbiehickscounselling.co.uk)

Email: [debbiehicks10@gmail.com](mailto:debbiehicks10@gmail.com)

07851 133782





Find me on  
Facebook!

01579  
362999

*Welcome to TMS*

Offering competitive vehicle repairs

Cars, light commercials & 4x4s

Servicing MOT Work

Diagonostics Welding

Friendly family run business

*Pop in and see us or give us a call*

*No job too big or too small*

Terry Northey TMS - 01579 362999

The garage, Upton Cross, PL14 5AX



**FOR ALL YOUR CELEBRATION NEEDS**

Visit our shop: 12 Fore Street, Callington

Call us on 01579 384386

Find us on Facebook or visit our website:

**[www.victoriaeyton.co.uk](http://www.victoriaeyton.co.uk)**

- Helium Balloons - Balloon Arches -
- Bespoke Balloon Designs -
- Personalised Balloons - Partyware -
- Huge selection of greetings cards -
- **Weddings, Parties and Corporate events catered for.**

## **DOG GROOMING**

**40 YEARS EXPERIENCE**



**SMALL and MEDIUM Dogs  
Groomed to Your Request**

**LISKEARD AREA  
Inquiries Welcome**

**Call Patricia: 07517 658862  
TO YOU OR TO ME**



Domestic Electrical  
Property Maintenance  
Interior & Exterior Work  
Carpentry :: Decking  
Kitchens :: Bathrooms  
Wall & Floor Tiling  
General Plumbing

**MCCARTHY PROPERTY MAINTENANCE**

**Electrical Safety  
Register** incorporating  
ELECTSA  ECA  
Certification Ltd

**HIGHLY REGARDED LOCAL BUILDER  
COMPETITIVELY PRICED  
COVERING THE SOUTH WEST**

Contact Dominic

07968 599 675

01579 362 945

[info@mccarthypropertymaintenance.co.uk](mailto:info@mccarthypropertymaintenance.co.uk)

**[www.mccarthypropertymaintenance.co.uk](http://www.mccarthypropertymaintenance.co.uk)**



# Liskeard Home Improvements

*Complete property refurbishment & building maintenance*

- Tiling specialist
- Decorating & wall papering
- Carpentry
- Plastering & dry lining
- Plumbing & electrical
- Bathrooms - wet rooms - kitchens



H: 01579 362006 M: 07889 218710 E: [scottberridge@me.com](mailto:scottberridge@me.com)

[liskeardhomeimprovements.co.uk](http://liskeardhomeimprovements.co.uk)

## JPH plastering and Rendering

Internal plastering

Internal and external rendering

Internal/external painting & decorating

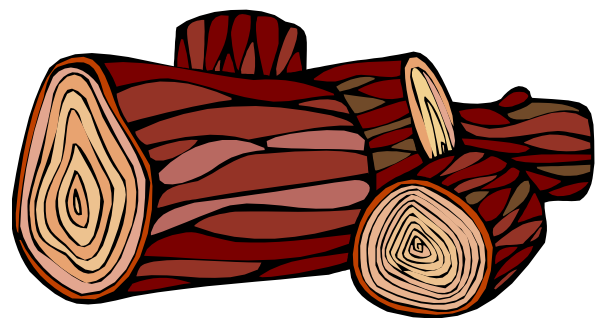
Property maintenance

Landscaping and land management

For estimates and no obligation quotes  
contact Justin on:

**07539 296799** or @ JPH garden  
and home maintenance.

## SEASONED LOGS



**MIXED LOAD**

or

**HARDWOOD**

Tel. Jonathan

Mobile **07966 070725**

or

## PENROSS

Rosecraddock Lodge Holiday Bungalows  
(Between Pensilva & Liskeard)

Ideal for family & friends coming to visit!



Refurbished in 2018. Sleeps 4. Electric, heating, bedding & towels inc in rent. Patio. Free wi-fi. Follow us on Facebook.

Sorry no pets or smoking.

Contact Julie Tucker on 01579 362221 or

email [penhargetfarm@gmail.com](mailto:penhargetfarm@gmail.com)

for 15% discount

## NICOLA GREENE

BSc (hons) Podiatry MChs

HPC Registered Chiropodist/Podiatrist

**Home Visit Practice treating all your foot care needs:**

- Nail Cutting
- Corns and Calluses
- Thickened Nails
- Dry Cracked Skin
- Verrucae
- Foot Pain
- Diabetic Foot Assessments
- Wound Care

**T: 01579 590027**

**M: 07786164205**

**E: [nicki\\_greene@yahoo.com](mailto:nicki_greene@yahoo.com)**

## JUST IN STONE

Maintaining and preserving our countryside for the benefit of all

Dry Stone Walls

Cobblestoning

Stone faced walls

Hedgelaying/steeping

Land management

All aspects of Landscaping

**Mobile: 07539 296799**

Email: [just.in.stone@outlook.com](mailto:just.in.stone@outlook.com)

## Tom Marshall

### TM Plastering

Plasterer and Property Care

**07544819284**

[Tommarshallcornwall@gmail.com](mailto:Tommarshallcornwall@gmail.com)

**Free estimates**

- Internal plastering
- Internal / external rendering
- Damp proofing
- Stud Walls
- Patio laying
- Chimney repairs
- Pointing
- Painting

# Debbie's Care Services Recruitment Agency

**Tel. 0777 948 3230**

Hello, my name is Debbie. I am a local lady who has been working in the community for over 30 years. I run a Care Recruitment Service placing fully trained carers into community care roles.

We provide the following services and more!

- Assisting bathing / showering
- Preparation of meals
- Cleaning / Shopping / Ironing
- Companionship / Friendship and emotional support
- Assisting with mobility
- Day, Evening and Night Care

## **DO YOU NEED A HELPING HAND?**

Reliable, friendly,  
experienced, mature  
local resident offering  
the following services:



**Cleaning      Ironing**

**Shopping      Light Gardening      Dog Walking**

CRB/DBS checked and fully insured.      Competitive rates.

**Contact Jess:** Telephone or text: 07934 764 327.



Email: [homeangel77@yahoo.com](mailto:homeangel77@yahoo.com). Find us on Facebook

# **Matt's Windows**

**Repair of Windows, Doors  
& Glass Unit Replacement**

**T: 01579 641228**

**M: 07533 387368**



## **PENSILVA GARDENER**

**20 years experience in Garden  
and Countryside skills.**

**All garden work undertaken.**

**Call Chris on 01579 383047**

**or 07792 936413**



KV Accounting Solutions

ACCA

## Local Accountant offering fixed fee accounting services

With over 20 years experience, I am a fully qualified, friendly, local accountant

- |   |  |
|---|--|
| ✓ Annual Accounts for Sole Traders and Partnerships | ✓ Self Assessment tax returns                        |
| ✓ Book Keeping & Payroll                            | ✓ iXBRL tax filing                                   |
| ✓ Personal Tax Planning                             | ✓ Tax investigation Fees Insurance                   |
| ✓ Company Accounts                                  | ✓ Company Secretarial work                           |
| ✓ Business Support & Advice                         | ✓ Tax calculations for Sole Traders and Partnerships |

Kate Vaughnley FCCA - Chartered Certified Accountant

Website : [www.kvaccountingsolutions.co.uk](http://www.kvaccountingsolutions.co.uk) or Email : [katevaughnley@gmail.com](mailto:katevaughnley@gmail.com)  
Telephone : 01579 364083



BA

Gas Services

NATURAL GAS - LPG - OIL

BOILER INSTALLATION

BOILER SERVICE & REPAIR

LONG WARRANTY FREE QUOTES

**07859848288**

[bagasservices@outlook.com](mailto:bagasservices@outlook.com)

533335

GAS  
**safe**  
REGISTER





# GENERAL GARDEN & HOUSE MAINTENANCE

**NO JOB TOO SMALL**

Call to discuss your requirements.  
NO OBLIGATION quotes given.

One off jobs or regular work catered for.

Here are some examples...

## OUTSIDE

MOWING

HEDGE CUTTING

FENCE PAINTING

BOARDER WEEDING

PATIOS & DRIVES

CLEANED

## INSIDE

WINDOWS CLEANED  
INSIDE & OUT.

PAINTING

CLEANING

SHOPPING

IRONING

**CALL ANDREW CARLIN**

now on:

**07407 323888**

Thank you.



## Affordable Counselling

Caring, confidential,  
non-judgemental

- Increased confidence and self esteem
- Help to cope better at difficult times
- Improved relationships
- Clarify confused thoughts & feelings
- Assertiveness
- Personal insight
- Improved emotional health
- Available for youth and adults

**Isabelle McGarahan BA, PGCE**  
**Dip in Therapeutic Counselling,**  
**Accredited ACC, DBS cleared**  
**[www.im-counselling.org](http://www.im-counselling.org) email:**  
**[isabelle@im-counselling.org](mailto:isabelle@im-counselling.org)**  
**01579 344090/07857326229**



**P BRADLEY PLUMBING & HEATING**

Email: [info@pbplumbingheating.co.uk](mailto:info@pbplumbingheating.co.uk)

Web: [www.pbplumbingheating.co.uk](http://www.pbplumbingheating.co.uk)

Facebook: @PBradleyPlumbingandHeating

**NO JOB TOO BIG OR SMALL**

**24hr Emergency Call Out**

**Based in Liskeard**

**Call Today 07598956760**

***"The complete bathroom  
installation service"***

**New bathrooms fitted,  
floor and wall tiling specialist**

**General Plumbing including:**

- Bathroom makeovers
- Dripping taps and burst pipes
- Pump and cylinder changes
- Radiator upgrades and additions
- Specialist in Leadwork
- No job too small
- No Call out charge



**Friendly Service, Quality Work**

**NO VAT**

**City and Guilds Qualified  
established 1983**

**Call William Hale on**

**Tel: 01579 362132 Mobile: 07826 699719**



Kiln Dried Firewood  
Kindling & Firelighters  
Eco Heatlogs  
LPG Bottled Gas  
Patio, BBQ & Camping Gas  
Coal & Smokeless Fuel



**0800 8021 223**  
sales@loganslogs.co.uk  
www.loganslogs.co.uk

## Heel 2 Toe Footcare

Tired Aching feet.

Corns, Hard skin, Verruca.  
Fungal infected toe nails, or  
toe nails require cutting.

Diabetic feet also treated and  
regularly checked.

I can help to keep your feet  
looking and feeling good.

I am a trained Foot Health  
Practitioner to Diploma Level, fully  
insured & DBS checked.

I can do home visits via an  
appointment.

Call Penny: **07746 926146** for  
further information. **Please note  
new number May 2021.**

## MARK FITCH CHIMNEY SWEEP

- \* BRUSH & VACUUM
- \* CLEAN, RELIABLE SERVICE
- \* COVERING ALL S.E. CORNWALL
- \* DISCOUNT FOR MULTIPLE CHIMNEYS
- \* COWLS & GUARDS FITTED
- \* STOVES SERVICED



*Call  
Mark on:*

01579 350762  
07773 462643



# QUALIFIED RAYNOR MASSAGE THERAPIST

RELAXING AND THERAPEUTIC MASSAGE TREATMENTS

Effective for many different types of chronic pain, sports injury, stress and tension related problems



CBD massage now available

APPOINTMENTS AVAILABLE AT

LISKEARD THERAPY CENTRE  
LISKEARD PL14 3JB

THE WELLBEING CENTRE  
LISKEARD PL14 6AT

Contact : Tina North

Phone : 07720 832322



Website : [massage-therapy-cornwall.co.uk](http://massage-therapy-cornwall.co.uk)



## R J Gardening & Handyman Services

All aspects of gardening and handyman work undertaken.

- ~Local and Trustworthy
- ~Hard Working
- ~Reliable and Experienced
- ~No job too small
- ~Competitive rates

Contact Raymond on:

07541 229064 or 01579 347622

[raymond\\_pearcegb@yahoo.com](mailto:raymond_pearcegb@yahoo.com)

Find us on Facebook.



Fencing  
 Paths & Steps  
 Turf & Astro turf  
 Driveways  
 Retaining walls  
 Digger work  
 Footings & foundations

Patios  
 Rendering  
 Decking

**And more**

Free no obligation quotes

**Call Rob on:**

**07518246666 or  
 01579 641802**

Window Cleaner  
**Window Cleaner**

Also any upvc cleaned

i.e. fascias, gutters, etc.

gutters cleared & unblocked

Please phone Rob

**07709 053464**

Window Cleaner  
**Window Cleaner**

**Save Costly Energy!**



**SOLARTEC**

Windows &  
 Conservatories Ltd

**'A' Rated WINDOWS & DOORS  
 at BEST PRICES EVER!**



Professionally fitted and finished by us with a  
 10 year ins. guarantee.  
 In all colours



**NEW**

**FACTORY SHOP  
 SUPPLY ONLY**

For all your windows, doors, conservatories,  
 fascia, trims, guttering and sealants

**7-10 DAY TURN AROUND ON WINDOWS,  
 DOORS and CONSERVATORIES**

**TEL: 01579 343425**

**FAX: 01579 344500**

WEBSITE: [www.solartecwindows.co.uk](http://www.solartecwindows.co.uk)

EMAIL: [sales@solartecwindows.co.uk](mailto:sales@solartecwindows.co.uk)

**KEEPING JOBS IN CORNWALL**

*PJR Garden Services*

**Phil Rule**

All aspects of garden  
 work - grass / hedge  
 cutting, patios, fencing  
 etc.

**Mobile 07387 449004**



# Group Travel

Day Trips & Coach Holidays

Enterprise Park, Midway Road, Bodmin, Cornwall PL31 2FQ

## Coach Excursions & Tours 2021

10th July	Dartmoor, Inside and Out
14th September	Widcombe Fair
19th - 24th September	Visit Yorkshire
4th - 8th October	Visit Blackpool
13th October	Goosey Fair, Tavistock
19th - 22nd November	Turkey & Tinsel: Weston-Super-Mare
27th November	Exeter Christmas Market
4th December	Bath Christmas Market
19th December	Cornish Christmas Lights
19th December	London Int. Horse Show @ ExCel

### Early 2022

12th March 2022	Crufts, The Worlds Greatest Dog Show
24th - 29th April 2022	Chester, Liverpool & the Beatles
30th April 2022	Toby's Garden Festival, Powderham
6th May 2022	Steam Train & Kents Cavern
8th - 9th July 2022	Hampton Court & Kew Gardens

**Call: 01208 77989**  
for bookings or brochure

Visit our 2021 / 2022 Excursions Page on our website where you will find a link to download a PDF version of our brochure.



website: [grouptravelcoachhire.co.uk](http://grouptravelcoachhire.co.uk)  
email: [grouptravelcornwall@btconnect.com](mailto:grouptravelcornwall@btconnect.com)  
facebook: [facebook.com/grouptravelcwl](https://www.facebook.com/grouptravelcwl)

## Martin Hoare – Local, Reliable, Competitive



WHEEL DIGGER FOR HIRE  
ALSO AVAILABE 'BREAKER'  
AND NEW CONCRETE  
'CRUSHER BUCKET'

ALL AT COMPETITIVE RATES

GROUND WORKS  
DRAINAGE  
NEW DRIVEWAYS  
SEPTIC TANKS &  
'SOAK AWAYS' INSTALLED



LASER LEVEL FOR HIRE  
QUOTES AVAILABLE



Phone 01579 363517

or

Mob 07863 291213



# INDEPENDENT FAMILY FUNERAL DIRECTORS

Supporting families to arrange funerals with sensitivity, dignity and care.

- Flexible, caring approach, tailor-making funerals to suit your needs and budget.
- Open and transparent, affordable pricing.
- Free bereavement support sessions, open to all in our community, first Wednesday of the month, 10am - 12pm.
- Prepayment Funeral Plans available

For details of our services and prices, visit our website.



**01579 362358 | [www.fdhallfunerals.co.uk](http://www.fdhallfunerals.co.uk)**



Avalennek, Caradon Town,  
Upton Cross, Liskeard  
Cornwall PL14 5AR  
Telephone 01579 363598  
Mobile 07901 538132  
[chrisrounsevell@tiscali.co.uk](mailto:chrisrounsevell@tiscali.co.uk)

## HOG ROAST EQUIPMENT HIRE AND MEAT SUPPLY

Hog Roasts For Those Special Occasions  
Self Catering or Hassle Free Service  
Everything done to your special requirements

**CHRIS ROUNSEVELL**  
**TRADITIONAL BUTCHER**

Come and visit our recently updated  
**Tile & Bathroom showroom** in PENSILVA

We offer a generous discount to all Pump Readers

Unit 24 Pensilva Ind Est, St Ive Road, Cornwall PL14 5RE 01579 362264



**CORNWALL TILE**  
CENTRE

Pensilva Showroom

Open Mon - Fri 8.30am - 5pm  
Saturday 9.00am - 1pm

Tiles & Mosaics for:

Bathrooms & Kitchens Living Areas Conservatories  
Patios & External Areas Wet Rooms & Spas Swimming Pools  
& All Commercial Applications

 **atlas concorde**

[www.cornwalltile.com](http://www.cornwalltile.com)

**OPEN FOR RETAIL, TRADE & COMMERCIAL ENQUIRIES**



## D.J.A. BUILDING SERVICES

ALL ASPECTS OF PROPERTY MAINTENANCE BUILDING & REFURBISHMENT

- \* Bespoke Furniture and Kitchens
- \* Wardrobes and Bookcases
- \* Garden Sheds, Poultry Houses & Small Animal Shelters
- \* Over 30 years' experience
- \* Fully insured
- \* References available
- \* Free estimates
- \* No VAT

**Call David on 01579 364050 / 07767662635**

## Chiropodist

Fully qualified, experienced and insured Chiropodist/Podiatrist

- Nail cutting, corns/callus, diabetic foot care etc
- Personal home visits, groups and residential homes

**Contact Clare:  
07757973709**



## Westwood Garden Maintenance



*Antony Watts*

*Grass Cutting, Clearance*

*Weeding, Turfing*

*Hedge Cutting*

*Patio Cleaning, Planting*

*Regular Visits / One-off Contracts*

*Residential & Commercial*

**FREE ESTIMATES**

01579 362019    [www.westwoodgm.co.uk](http://www.westwoodgm.co.uk)    07952 094472



THE HOME OF WOOD

## BULK DISCOUNTS AVAILABLE ON OUR 30 YEAR SERVICE LIFE POSTS



OUR GOLD TREATED STAKES AND POSTS ARE THE ONLY ONES AVAILABLE IN THE UK THAT ARE APPROVED BY THE WPA BENCHMARK FOR 30 YEAR SERVICE LIFE

For more information please contact one of our team



Bond Timber, Bake Sawmill, Trerulefoot, Saltash, Cornwall,

PL12 5BW

01503 240 308 [stacy@whbond.co.uk](mailto:stacy@whbond.co.uk)

# Pensilva Stores

**Amazing Value**

**Premier**  
a great deal more from your local store  
Mon-Sat. 7:00 AM. - 9:30 PM.  
Sunday 8.00 AM. - 9:30 PM.

- ✓ Fantastic Special Offers every month!!! (See store leaflets)
- ✓ Come and Check out our great deals on Wine, Beer and Spirits
- ✓ Local Produce: Homemade Butter and Clotted Cream, Meat from our local butcher
- ✓ Cornish Fresh Fruit and Vegetables
- ✓ Fresh Bread, Pasties and Cakes
- ✓ Take Away Coffee, tea and hot chocolate
- ✓ Newspapers and Magazines, Greeting Cards
- ✓ Paypoint, Lottery

\* **Free to use ATM** \*  
\* **Card Payment** \*

*Friendly Staff + Service with a Smile !!!*

**Pensilva Stores is a family run business who have been serving local people and visitors for more than 21 years.**

Higher Road, Pensilva, Liskeard, Cornwall PL14 5NQ

Tel: 01579 362547

# MENDOLOGY

## Garage Door Specialist

- Repairs
- Servicing
- Installations


Out of hours service  
call Dave anytime 07974 442645

**MENDOLOGY** COMMERCIAL DOORS LTD  
www.mendologydoors.co.uk

**01579 363760**

# PensilvaCars

01579 363516

- ✓ MOTs Class 4
- ✓ Service
- ✓ Repair
- ✓ Tyres
- ✓ FREE Courtesy Car
- ✓ Car & Van Sales
- ✓ Diagnostics
- ✓ Air Conditioning
- ✓ 

**We have offered a supply, fit & balance of tyre service for 10 years at competitive prices.**

**Most of our tyres can be supplied the same day.**

**LOCAL RECOVERY £45.00**

**[www.pensilvacars.co.uk](http://www.pensilvacars.co.uk)**

**[pensilvacars@hotmail.co.uk](mailto:pensilvacars@hotmail.co.uk)**

We can service and repair your car to manufacturer specification, keeping your dealer warranty without main dealer expense.





# KEITH RICHARDS

## Motor Body Repair Specialists

A family run business with fully equipped & maintained workshops & a focus on  
Customer Care

- ◇ Motor Body Repair Specialist
- ◇ Mechanical Repairs
- ◇ Servicing to All Makes & Models
- ◇ Computer 4 Wheel Alignment
- ◇ 24 Hour Recovery Service
- ◇ Renovations & Re-sprays
- ◇ Member of RMI (Retail Motor Industry Federation)
- ◇ Latest Diagnostics (including specialists for VW, Audi, Seat, Skoda & Vauxhall)

With over 30 years' experience we aim to provide you with:- Value for Money -  
Friendly Service - Professional Approach - Expert Advice that you Can Trust  
(Visit our website for more details)

Pensilva Industrial Estate, St Ive Road, Pensilva, Liskeard, Cornwall PL14 5RE

Tel: 01579 362593

Email: [keith@keithrichardsmotorbody.co.uk](mailto:keith@keithrichardsmotorbody.co.uk)

Fax: 01579 363194

Website: [www.keithrichardsmotorbody.co.uk](http://www.keithrichardsmotorbody.co.uk)

Wm. Newham & Sons <sup>Est. 1835</sup>

Proprietor Robbie Savill AWCB

**CHIMNEY SWEEPS  
& BLACKSMITHS**



CHIMNEY SWEEPING

BIRD GUARDS, COWLS & POTS FITTED

CCTV INSPECTIONS & SURVEYS

STACK REPAIRS & REBUILDS

RIGID STEEL SYSTEMS ERECTED

STAINLESS STEEL and PUMPED CONCRETE  
CHIMNEY LINING

STOVES SUPPLIED, INSTALLED & REPAIRED

FIREPLACE ALTERATIONS & RENOVATIONS

FULL RANGE OF FIREPLACE FURNITURE  
made to order

**01579 347777**

need somewhere to stay ?  
between homes ?  
family/friends visiting ?

**Cutkive Wood**  
  
**Holiday Lodges**

ideal for Pensilva  
& St.Ive

please call Jackie on  
01579 362216

# J. J. Child

Plumbing and heating engineer.

Oil appliance service, repair and breakdowns.

Over 30 years experience

Call John: 01579 362336 or 07837 921086

