

THE PARISH PUMP



January 2021
Edition 470



The Newsletter for the Parish of St Ives

Sorry, but the Parish Pump is online only, until further notice.



The Christmas tree outside Millennium House, decorated by the children of Pensilva School.

Disclaimer

The articles appearing in this magazine do not necessarily reflect the views of the Parish Council nor of the Parish Pump Editor.

Parish Councillors Telephone List

Alan Moss (chair)	01579 362064	Ivor Vaughan (vice-chair)	07979 934604
James Bruce	07411 192645	Marlene Carr	01579 362919
Martin Corney	01579 382450	Rosemary Farley	01579 384810
Angie Haines	01579 362459	Peter Haines	01579 362459
Tony Hodson	07973 536964	Nigel Libby	07968 891814
Kath Parkes	01579 362005	Craig Vaughnley	01579 364083
Samantha Reilly	via Parish Office	01579 363096	
Sharon Daw (Cornwall Councillor) 07837 379305 slash.dash.daw@gmail.com			

Meetings of St Ive Parish Council

Meetings are now being held when possible.

Please see the Parish Council website for meeting dates, agendas and minutes.

<http://st-ive-parishcouncil.gov.uk/minutes-agendas/>

Contact details for St. Ive Parish Council and for Millennium House

Address for correspondence: Millennium House, Century Square, Pensilva PL14 5NF

General Parish matters should be raised initially with the Parish Clerk, Jenny Hoskin, who will present them to the Parish Council.

Telephone: 01579 363096, email: stiveparish@btconnect.com

For accounts matters for the Parish and for Millennium House contact John Body, Finance Officer: 01579 362102, email: millenniumhouseadmin@btconnect.com

Millennium House enquiries and reservations: 01579 363096

email: millenniumhouse@btconnect.com.

On the web: Millennium House Website: www.cornwallvenue.com

Parish website: st-ive-parishcouncil.gov.uk Facebook: facebook.com/stiveparishcouncil



Devon & Cornwall Police
Building safer communities together



101

Minicom 18001 101

Police Community Neighbourhood Office

Your Community Support Officer is PCSO Steve Edser 30173.

email: CIOSNBMLiskeard@devonandcornwall.pnn.police.uk

To report a crime call 101 or go to www.devon-cornwall.police.uk

In an emergency call 999

LOCAL BABYSITTER

Hi, my name is Megan and I live in Pensilva. I'm studying a level 3 childcare course at St. Austell College. I'm 17 years old and I'm available most evenings for child or baby sitting.

I charge £4.50 per hour for hours between 19.00 and 00.00.
After midnight £7.00 per hour.

Phone 07401 295024

From the Editor

A HAPPY NEW YEAR TO
ALL PARISH PUMP
READERS.
EVERYONE STAY SAFE
AND WELL DURING 2021 !

Parish Pump Information and Contact Details

To contact the editor please email: parishpump@btconnect.com
or phone the Parish office: **01579 363096**.

Hardcopy submissions by post or by hand to the Parish office, Millennium House.
Softcopy submissions: By email to the editor in MS Word, MS Publisher, pdf, Tiff or jpeg. Please use A4 pages and minimum 16 point font as the Pump is initially produced in A4 size and reduced to an A5 booklet at the printing stage. If in doubt please contact the editor.

Current Advertising Prices including VAT at 20%

Per issue: Quarter Page £7.50 Half Page £15.00 Full Page £25.00

10% discount for 12 months paid in advance.

Bargain Corner free ads by email to the editor or drop off at the Parish Office.

Deadline for the Parish Pump is STRICTLY 15th of every month

WANTED

OLD TOOLS - ANY TRADE AND WOODEN TOOL BOXES
OLD BICYCLES, PARTS & ACCESSORIES - OLDER THE BETTER
OLD TOYS AND GAMES PRE-1980. OBSOLETE CAR PARTS
OLD BOOKS, COMICS, MAGAZINES, PRE-DECIMAL.

CASH ON COLLECTION - 07492 866255

CHAIRMAN'S REPORT

Happy New Year to you all – let's hope things will be better in 2021 and restrictions on family gatherings will ease.

Sam Reilly, one of our Parish Councillors, will be moving away from our Parish and so has tendered her resignation from the Council. Sam was a lifeline for some during the first lockdown when she volunteered to be on the end of the phone for those who had self-isolated and were unable to get shopping or prescriptions. Along with other volunteers she stepped forward to help. Her contribution to the Council and the Parish is much appreciated. She will be missed and we wish her all the best for the future,

I must also recognise one of our other Councillors, Marlene Carr, who has been in talks with the staff of Oak Tree Surgery for several weeks about using Millennium House as the Covid vaccination centre for the population of South East Cornwall. We can now confirm that Millennium House will be used within the next few weeks to administer the Vaccine. Our thanks go to Marlene for her efforts.

The waste ground at the end of Slade Park Road has been cleared by a few of volunteers. The granite slabs have been moved to create seating, and over 100 trees have been planted. It's a bit mucky at the moment, but we hope you will enjoy the area and the views in the spring.

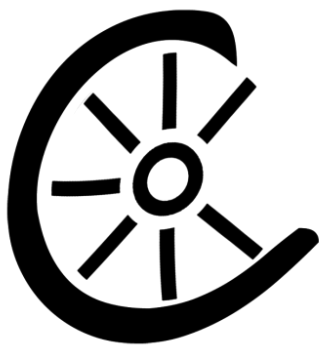
Alan Moss

News from the St Ive Parish Climate Action Group

The group is applying to become a Charitable Incorporated Organisation (CIO), which will allow us to undertake more ambitious projects within our parish. At the same time, the group voted on a change of name and will now be known as:

Parish of Saint Ive Community Resilience Project

For more information or if you would like to join the group, please contact Paul Wiscombe on 01579 382341 or pmwiscombe@hotmail.com



Cartwheels Craft Centre
Penhawger Farm, Merrymeet,
Liskeard PL14 3LW

Patchwork and quilting supplies and gifts

If you are staying at home during the current pandemic, shop all fabric now at www.cartwheelscraftcentre.co.uk. Local delivery available.

Also Longarm Quilting now at Cartwheels

Phone to book a time to come and discuss any longarm quilting requirements

Tel: 01579 340026 / 343675

TEN YEARS PLUS OF WILDLIFE WATCHING IN THE PARISH OF ST. IVE

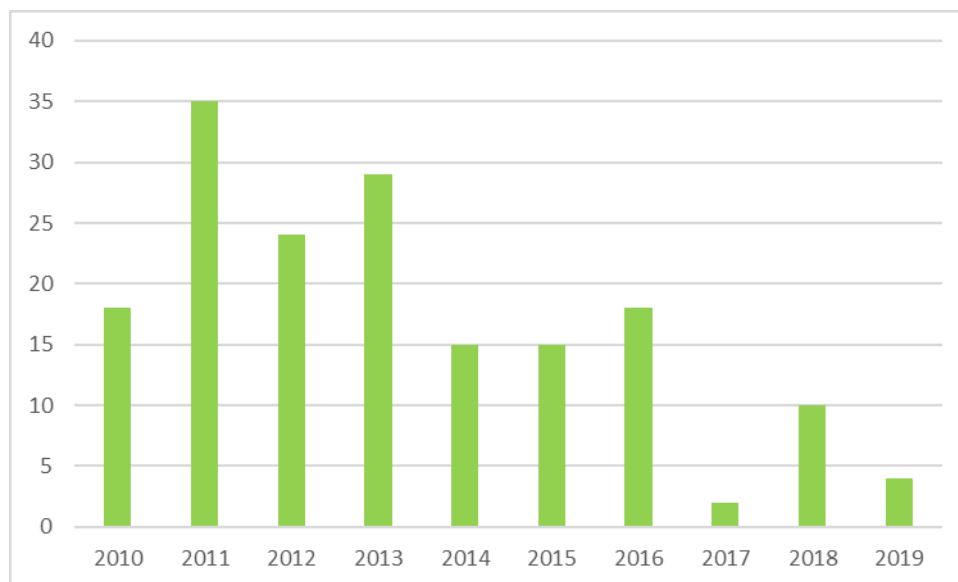
Since moving to the Parish at the end of 2009, I have been photographing and recording the wildlife I see on a daily basis. This month I thought I would share some of my observations of the common frog as we are coming up to the time of year for spawning. Global warming means that this now sometimes starts in January, but the peak is always in February.

THE COMMON FROG



Male frog during the breeding season

As you can see from the chart below, when we first arrived the frogs in our pond seemed to be doing really well, with larger clumps of spawn appearing year on year.



Total number of days sighted per year from 2010 - 2019

Whilst my sightings of frogs may sometimes be affected by visits to family in the short period of spawning, the amount of frogspawn in the pond is a fairly accurate indicator of the health of the population. Over the last three years, that has reduced drastically. Given a global decline in amphibian species and the fact that ranavirus was found in the SE of England in the 1980s and has been spreading across the country since then (the amphibians own pandemic), in many ways Cornwall has been lucky to escape this as long as it has.

This nasty disease kills common frogs either by causing sores and blisters on the animal's skin, or by causing their internal organs to bleed. Last year we had a very emaciated frog in the garden for a few days before it died. I suspect most crawl away under cover and are never seen.

Until recently, there would have been a week of activity in the pond with 40+ individuals in view at any one time. Although disturbed by us coming out and so bobbing below the surface, I found that if I took a chair and stayed as still as possible, I could observe and take photographs without affecting their behaviour.



As well as seeing pairs coupling up, the pond would be dotted with the male's white throats as they endeavoured to attract a mate with their extended throats and loud croaking. The louder the croak, the more likely he is to be successful.

At the end of the week there were large patches of spawn around the edge of the pond. They tend to all lay on top of existing spawn and only move somewhere else when there is no more room. There is safety in numbers for the developing tadpoles, although the spawn on the top of the heap is vulnerable to frosts.



In 2015 we watched a very strange behaviour during breeding. Frogs were pairing up in the main pond as usual, but then many of them proceeded to travel (still coupled with the male on the females back) all the way up to the small feeder pond above it. This is a distance of about 10ft, but very steep and even precipitous in places.

A pair of frogs starting their journey up to the feeder

We watched as they toppled back down some of the most difficult parts, only to go back and try again. The feeder pond is not more than 2ft across, so it was difficult to see why they were so determined to lay there. This behaviour has not been observed again.

Although Frogs are mainly sighted during the breeding season, they can be seen at almost any time of the year. Despite living solitary lives for the rest of the year, they can be seen in summer amongst the pond plants patiently waiting for their insect prey to come close enough to feed on. Even in winter, though rarely seen other than when breeding, they can be heard gently croaking.

Strangely, we have found that frogs up on Caradon Hill spawn earlier than down here where it is more sheltered. They also tend to spawn in temporary puddles which will almost certainly dry out before the tadpoles hatch. Despite all this, they have been very prolific. We need to watch and see if ranavirus is spreading there too.

WHAT CAN WE DO TO HELP OUR STRUGGLING FROGS?

1. In the past we all remember donating or receiving spawn from friends' ponds, but this may inadvertently assisted the spread of the disease. I note that this advice no longer seems to be given. However:-

SHARE FROGSPAWN CAUSIOUSLY AND NEVER MOVE ADULT FROGS!

2. There will hopefully be frogs which are immune from ranavirus and will form the basis of a new and resistant population. If you already have a pond:-

KEEP YOUR POND MAINTAINED AND HEALTHY FOR THEIR RECOVERY.

3. If you don't have a pond but have somewhere to put one:-

PUT A POND IN YOUR GARDEN.

It doesn't have to be big (an old washing up bowl will do), but make sure that there is a slope to enable the young frogs to leave the pond when they are ready. Don't worry about where the frogs will come from. They will find you!

A pond will provide so much interest. Dragonflies, damsel flies and other insects will hatch from it. Animals and birds will drink from it and bathe in it. There is plenty of advice on line if you want to find out more.



A juvenile frog feeding amongst the duck weed in summer

HAPPY WILDLIFE WATCHING!

Hilary T



Again in 2020,
another fun
display on
Slade Park
Road, Pensilva.
Thank you for
keeping us
smiling!

ALLOTMENTS ANYBODY?

We are investigating the possibility of providing allotments within the Parish for people who would like to grow their own fruit and veg but do not have enough space of their own.

If you think you might be interested, please call Paul Wiscombe on 01579 382341 or email pmwiscombe@hotmail.com

Parish of Saint Ive Community Resilience Project



Volunteer Days

Your chance to get involved with helping to look after your Community woodland.

Sunday 24th January

Sunday 21st February

11am-3pm

This is a fun and rewarding way to give a little back to a local community project at a time when caring for woodlands has never been so important. It's a great opportunity to meet new people, learn new skills, spend time in the woods and have fun!

Drinks, soup, bread and cake provided (Covid permitting!). Come along and bring family and friends. Those that come along and help get a share of some of the timber (once we have put aside the few loads for sale to raise funds for the years' insurance.)

Accompanied children (and dogs on leads) very welcome. Bring hand tools and work gloves if you have them i.e. loppers, bill-hooks and bow saws. We will have a small supply available.

No experience necessary. Training given. Work to suit all abilities and ages.

Come and share some good company, wholesome, productive work and delicious food!

Please [contact us](#) if you would like to come along so that we can make adjustments for social distancing in smaller work groups if need be. Ele and Anthony Waters: 01579 363775 or 07421224422.

News from The Growing Project

The Growing Project is already very well-known to many in our parish, if nothing else from the many articles it has contributed to the Parish Pump over the years. For those who are not so familiar with it, it is a Community Interest Company, founded in 2011 by the late Ruth Wilson, where local volunteers grow and sell organic fruit and veg for the local community. At the same time it provides a safe space for the helpers to enjoy a beautiful, peaceful and healing environment.

About three or four years ago, The Growing Project inherited the one-acre site in Pensilva where it is located, but while the facilities there for growing produce are first class, the facilities for the people involved are very basic. So, The Growing Project has launched a crowdfunding initiative to help to finance the provision of electricity, running water, and some toilets. To find out more go to

<https://chuffed.org/project/the-growing-project-fundraiser>



Please help this 🛠️ ground-breaking 🛠️ local project!

HELP FOR VULNERABLE PEOPLE IN COLD, DAMP ACCOMODATION.

Residents from households that have never had central heating, who are in poor health, or at risk of poor health, are being urged to apply to make sure their home is warm in the coming winter months.



A scheme that has already helped over a thousand households in Cornwall that have never had central heating stay warm and well, is now open for new applications.

Cornwall Council, supported by Inclusion Cornwall, Community Energy Plus, SSE and other partners, has secured a new 'Warm Homes Fund' programme to help another 400 households - whether privately rented or privately owned.

Are you or someone you know in poor health or at risk of ill health, or with underlying health issues? Are you caring for a vulnerable person and / or worried about your home being cold or damp? Is it affecting your health? If so, then Winter Wellbeing can help.

For advice and access to services provided by over 30 partner organisations, call Freephone 0800 954 1956 or email to advice@cep.org.uk to see if you qualify for this scheme or would like independent energy advice.

The £150m Warm Homes Fund was established in 2017 by National Grid and Community Interest Company, Affordable Warmth Solutions, who administer the fund on behalf of National Grid. To date, the Fund has supported more than 10,500 first time central heating installations across England, Scotland and Wales.

More information is available on [Cornwall Council's website](#)

Apply now to have a warmer home this winter



Could you or someone you know benefit from this Electric Vehicle?



Age UK Cornwall and the Isles of Scilly has generously provided an Electric Vehicle for use by people in South East Cornwall who have trouble getting around. The vehicle can be used by the public, not just for essential trips to doctors or hospitals, but also for shopping trips or even just for a day out.

This is how the scheme works.

The electric vehicle (pictured) is based at Millennium House, Pensilva, where charging points have been installed, powered by Millennium House's photovoltaic roof panels. The vehicle is wheelchair friendly.

The vehicle can be used by individuals or by groups, such as doctors' surgeries, churches, charities, clubs or societies. Prospective users would need to register with Age UK: this costs £18 per year for individuals and £36 per year for groups.

Once registered, the group or individual can book the vehicle at very reasonable rates: £40 for a full day (9 hours). £25 for half a day (4 hours). Or 50p per mile for short trips, like visits to the doctor or dentist or local shopping trips. These contributions are donations to support the running and ongoing maintenance of the electric vehicle. The rates compare very favourably with the cost of taking a taxi. Users will not even need to pay for fuel and the range of the vehicle is such that recharging would not be necessary except for a very long trip. You just need to make sure that you plug back into the charging point on your return.

The person driving the vehicle on behalf of the registered individual or group must hold a valid UK driving licence. Age UK will provide a short training exercise covering wheelchair accessibility and vehicle familiarisation at a location to suit the volunteer. Electric vehicles are very easy and safe to drive. Five similar vehicles are based elsewhere in Cornwall.

More information, including terms and conditions and registration forms, can be obtained from Age UK on 01872 266388 or email@ageukcornwall.org.uk; ask to speak to Lee Davies or Ann Lewis.



Millennium House itself will be registering as a group and is looking for volunteer drivers who could spare some time to help others. Other parish or town councils in the area can do the same. To join the Millennium House volunteer drivers group, contact Millennium House on 01579 363096 or stiveparish@btconnect.com

PENSILVA MEMORY CAFE

Like many village organisations, Pensilva Memory Cafe is unable to meet at present because of the Covid 19 precautions. We do, however, try to keep in contact with our members through the Sparkle, a news sheet telling of events in the past that happened during that month. It is entertaining and informative and guides thoughts back to those previous years, thus stimulating memories. We deliver a copy each fortnight.

If you have memory problems, or are looking after someone who does, and would like to make contact with this friendly group, call Geoff on 362698.



As a result of COVID-19 our monthly meetings are postponed until further notice. We are still available to support anyone who needs us during this period and have members who have experience of various surgical procedures, radiotherapy, and hormone therapy. If you are recently diagnosed and just want to have a chat about your treatment or your options, don't hesitate to make contact.

TAPS membership is free and open to men and their partners. For more information on TAPS please contact Chris Greensted by phone on 01822 834797 or by email to tapsinfo555@gmail.com.

Other excellent sources of support are: -

Prostate Cancer UK (PCUK): 0800 074 8383

Tackle Prostate Cancer (UK): 0800 035 5302

The Chestnut Appeal: 01752 792736

(Derriford Hospital)

The Mustard Tree Centre: 01752 430060

(Macmillan Cancer Support)

Pensilva Post Office

Located through the Café on the 1st floor of Millennium House



Opening times during lockdown:

Tuesday - 9am to 1pm

Wednesday - 9am to 12 noon

Friday - 9am to 12 noon

Note - Back open on Wednesdays

The travelling post office at St Ive Institute is open on Wednesdays, 10:30-12 noon.

Saint Ive Parish tree-planting survey

Please let us know about any trees that you plant within the Parish. We will include them in our own survey and we will notify the Forest for Cornwall on your behalf, if appropriate.

Contact us by phone: 01579 383967, or by email:

parishpump@btconnect.com, or via the Saint Ive Parish

Climate Action Group Facebook page. Pictures very welcome.



Bargain Corner Free Ads up to £50

Ads are free for items up to £50. £5 charge for items over £50. Please ring the Parish Office on **01579 363096** or leave a note at Millennium House reception or email **parishpump@btconnect.com**.

*****Please let us know when your item has sold*****

Baby things. Job lot free to anyone struggling to make ends meet. Unused for over 1 year. Items used infrequently at Nanas house. All in good condition. Car seat for newborn. Travel cot and travel stairgate. Changing mat. Baby bedding. Back rest for bath.
Barbara 01579383967 or 07933960113

Approx. 2,200 **copper disc rivets for fibre cement roof slating. £10.**
5 Medium size **Kit Bags** in reasonably good condition (no cords). **£25** the five.
Set of 5 collectable **Meerkats**. VGC with certificates. **£30** the set of 5 or **£10** each.
2 large size lightweight camouflage military jackets **£5** each. **Tel 01579-384658**

Wheel & Tyre. New. Size 195/50 R15. **£50. 01579 383054.**

2 x Medium Weight **Car Ramps** **£20.**
Push Mower **£5. 01579 363199**

Canon IP2700 **Printer. £20**
Computer screen 19" £20.
Epson Perfection v350 **Scanner Photo £20**
Sony Revia 42" **TV. £45.**
All in working order. **01579 363200**

Maximuscle **home gym system £100** ono.
Black leather **chaise longue**. Excellent condition. **£100** ono.

Set of 3 **suitcases**, red, vgc, Antler, **£40** ono. **07770 747353.** Pensilva area

Scelextric Sport Le Mans set. Still in box. Great condition. **£100.**

Toshiba **sewing machine £30.** New **pond liner 5m x 5m £30.** Five **Crittall windows 900mm x 1000mm** approx. Suitable for shed or greenhouse. **Free. 01579 363573**

Plastering gear: 110v paddle mix with transformer, various trowels, hawk and other bits. Good for DIY etc. **£70** ono.
Easycamp Tour Ligata 6 berth tent. Used only 3 times. **£100** or offers.

Dark brown **leather chair. £50**

07980 380224 - Pensilva area.

Set of **Snow chains**, new and unused fit 14" to 19" rims, self adjusting. **£40**
Pensilva **01579 362207**

Brown speckled **carpet**, 2m x 5m. Brand new (over ordered). **£50.**

Arch design **headboards. £20** each or **£35** pair. **01579 362211**

PLEASE LET US KNOW WHEN YOUR ITEM HAS SOLD

PENSILVA VILLAGE HALL

Due to the Coronavirus outbreak all activities in the hall are cancelled until further notice.

Anyone wishing to book the hall for future meetings, birthday parties or fundraisers please contact Peter or Jackie Browning on **01579 363212** or email **peterpensilva@gmail.com**

Please note that as well as hall rent there is a coin meter for heating at 60p/hr.



MOBILE LIBRARY

The County Mobile Library is back. It visits our area once a month on Fridays of "week 3" (not necessarily the 3rd Friday of the month).

Next visits: **15th Jan.**

Stops at The Victoria Inn, Pensilva, 10.25-10.45am; Quethiock bus stop 11.00 to 11.20am.



Struggling with Sight Loss?



iSight Cornwall offers practical help to people living with sight loss in Cornwall including:

Low Vision: Advice for low vision aids

Assistive Technology: Advice on products

Benefits Advice: Assistance to claim entitlements

Equipment Demonstration: Advice on gadgets

Social Clubs & Activities: Links to clubs & activities in the county

For more details Telephone 01872 261110 or visit

www.isightcornwall.org.uk

ADVERTISING SECTION

Please support our advertisers!

Advertisers please note:

Due to restrictions in place as a result of the COVID19 outbreak, the Parish Pump is currently being published online only. For as long as this situation persists, we will continue to run the ads placed by our regular advertisers FREE OF CHARGE. For those of you that have paid in advance, the end date of your advertising run will be extended accordingly.

New and occasional advertisers, please call the editor on 01579 364016 to discuss. Many thanks.

TRADITIONAL STONE SERVICES

CLASSIC & TIMELESS STONE MASONRY AND LETTERING

MEMORIAL CLEANING

COMMISSIONS TAKEN

01579 363693 OR 07507 782282

Debbie Hicks - Counselling and Psychotherapy

Caring, confidential counselling for all.

I work in a therapeutic relationship to help you understand yourself better.

I offer a warm, approachable, relaxed environment for you to untangle your thoughts and emotions.

More info on my website or by contacting me.

www.debbiehickscounselling.co.uk

Email: debbiehicks10@gmail.com

07851 133782





Liskeard Home Improvements

Complete property refurbishment & building maintenance

- Tiling specialist
- Decorating & wall papering
- Carpentry
- Plastering & dry lining
- Plumbing & electrical
- Bathrooms - wet rooms - kitchens



H: 01579 362006 M: 07889 218710 E: scottberridge@me.com

liskeardhomeimprovements.co.uk

JPH plastering and Rendering

Internal plastering

Internal and external rendering

Internal/external painting & decorating

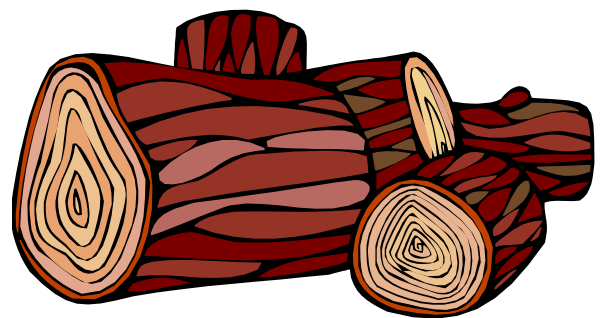
Property maintenance

Landscaping and land management

For estimates and no obligation quotes
contact Justin on:

07539 296799 or @ JPH garden
and home maintenance.

SEASONED LOGS



MIXED LOAD

or

HARDWOOD

Tel. Jonathan

Mobile **07966 070725**

or

PENROSS

Rosecraddock Lodge Holiday Bungalows
(Between Pensilva & Liskeard)

Ideal for family & friends coming to visit!



Refurbished in 2018. Sleeps 4. Electric, heating, bedding & towels inc in rent. Patio. Free wi-fi. Follow us on Facebook.

Sorry no pets or smoking.

Contact Julie Tucker on 01579 362221 or

email penhargetfarm@gmail.com

for 15% discount

NICOLA GREENE

BSc (hons) Podiatry MChs

HPC Registered Chiropodist/Podiatrist

**Home Visit Practice treating all
your foot care needs:**

- Nail Cutting
- Corns and Calluses
- Thickened Nails
- Dry Cracked Skin
- Verrucae
- Foot Pain
- Diabetic Foot Assessments
- Wound Care

T: 01579 590027

M: 07786164205

E: nicki_greene@yahoo.com

JUST IN STONE

Maintaining and preserving our
countryside for the benefit of all

Dry Stone Walls

Cobblestoning

Stone faced walls

Hedgelaying/steeping

Land management

All aspects of Landscaping

Mobile: 07539 296799

Email: just.in.stone@outlook.com

Tom Marshall

TM Plastering

Plasterer and Property Care

07544819284

Tommarshallcornwall@gmail.com

Free estimates

- Internal plastering
- Internal / external rendering
- Damp proofing
- Stud Walls
- Patio laying
- Chimney repairs
- Pointing
- Painting

Debbie's Care Services Recruitment Agency

Tel. 0777 948 3230

Hello, my name is Debbie. I am a local lady who has been working in the community for over 30 years. I run a Care Recruitment Service placing fully trained carers into community care roles.

We provide the following services and more!

- Assisting bathing / showering
- Preparation of meals
- Cleaning / Shopping / Ironing
- Companionship / Friendship and emotional support
- Assisting with mobility
- Day, Evening and Night Care

DO YOU NEED A HELPING HAND?

Reliable, friendly,
experienced, mature
local resident offering
the following services:



Cleaning Ironing

Shopping Light Gardening Dog Walking

CRB/DBS checked and fully insured. Competitive rates.

Contact Jess: Telephone or text: 07934 764 327.



Email: homeangel77@yahoo.com. Find us on Facebook

Matt's Windows

**Repair of Windows, Doors
& Glass Unit Replacement**

T: 01579 641228

M: 07533 387368



PENSILVA GARDENER

**20 years experience in Garden
and Countryside skills.**

All garden work undertaken.

Call Chris on 01579 383047

or 07792 936413



KV Accounting Solutions

ACCA

Local Accountant offering fixed fee accounting services

With over 20 years experience, I am a fully qualified, friendly, local accountant

- | | |
|---|--|
| ✓ Annual Accounts for Sole Traders and Partnerships | ✓ Self Assessment tax returns |
| ✓ Book Keeping & Payroll | ✓ iXBRL tax filing |
| ✓ Personal Tax Planning | ✓ Tax investigation Fees Insurance |
| ✓ Company Accounts | ✓ Company Secretarial work |
| ✓ Business Support & Advice | ✓ Tax calculations for Sole Traders and Partnerships |

Kate Vaughnley FCCA - Chartered Certified Accountant

Website : www.kvaccountingsolutions.co.uk or Email : katevaughnley@gmail.com
Telephone : 01579 364083



**NATURAL GAS - LPG - OIL
BOILER INSTALLATION**

BOILER SERVICE & REPAIR

LONG WARRANTY FREE QUOTES

07859848288

bagasservices@outlook.com

533335

**GAS
safe
REGISTER**

**PLEASE
SUPPORT
LOCAL
BUSINESSES
THAT
ADVERTISE IN
THE ST IVE
PARISH PUMP**



FOR ALL YOUR CELEBRATION NEEDS

Visit our shop: 12 Fore Street, Callington

Call us on 01579 384386

Find us on Facebook or visit our website:

www.victoriaeyton.co.uk

- Helium Balloons - Balloon Arches -
- Bespoke Balloon Designs -
- Personalised Balloons - Partyware -
- Huge selection of greetings cards -
- **Weddings, Parties and Corporate events catered for.**

DOG GROOMING

40 YEARS EXPERIENCE



**SMALL and MEDIUM Dogs
Groomed to Your Request**

**LISKEARD AREA
Inquiries Welcome**

**Call Patricia: 07517 658862
TO YOU OR TO ME**



Domestic Electrical
Property Maintenance
Interior & Exterior Work
Carpentry :: Decking
Kitchens :: Bathrooms
Wall & Floor Tiling
General Plumbing

MCCARTHY PROPERTY MAINTENANCE

**Electrical Safety
Register** incorporating
ELECTSA  ECA
Certification Ltd

**HIGHLY REGARDED LOCAL BUILDER
COMPETITIVELY PRICED
COVERING THE SOUTH WEST**

Contact Dominic

07968 599 675

01579 362 945

info@mccarthypropertymaintenance.co.uk

www.mccarthypropertymaintenance.co.uk



GENERAL GARDEN & HOUSE MAINTENANCE

NO JOB TOO SMALL

Call to discuss your requirements.
NO OBLIGATION quotes given.

One off jobs or regular work catered for.

Here are some examples...

OUTSIDE

MOWING

HEDGE CUTTING

FENCE PAINTING

BOARDER WEEDING

PATIOS & DRIVES

CLEANED

INSIDE

WINDOWS CLEANED
INSIDE & OUT.

PAINTING

CLEANING

SHOPPING

IRONING

CALL ANDREW CARLIN

now on:

07407 323888

Thank you.



Affordable Counselling

Caring, confidential,
non-judgemental

- Increased confidence and self esteem
- Help to cope better at difficult times
- Improved relationships
- Clarify confused thoughts & feelings
- Assertiveness
- Personal insight
- Improved emotional health
- Available for youth and adults

Isabelle McGarahan BA, PGCE
Dip in Therapeutic Counselling,
Accredited ACC, DBS cleared
www.im-counselling.org email:
isabelle@im-counselling.org
01579 344090/07857326229



P BRADLEY PLUMBING & HEATING

Email: info@pbplumbingheating.co.uk

Web: www.pbplumbingheating.co.uk

Facebook: @PBradleyPlumbingandHeating

NO JOB TOO BIG OR SMALL

24hr Emergency Call Out

Based in Liskeard

Call Today 07598956760

***"The complete bathroom
installation service"***

**New bathrooms fitted,
floor and wall tiling specialist**

General Plumbing including:

- Bathroom makeovers
- Dripping taps and burst pipes
- Pump and cylinder changes
- Radiator upgrades and additions
- Specialist in Leadwork
- No job too small
- No Call out charge



Friendly Service, Quality Work

NO VAT

**City and Guilds Qualified
established 1983**

Call William Hale on

Tel: 01579 362132 Mobile: 07826 699719



LPG Bottled Gas
 Patio, BBQ & Camping Gas
 Kiln Dried Firewood
 Coal & Smokeless Fuel
 Eco Heatlogs
 No Contracts
FREE DELIVERY



01208 816827

sales@loganslogs.com
 www.loganslogs.com



- Commercial Gases
- Welding & Cutting Gases
- Food & Drink Gases
- Balloon Gases



Heel 2 Toe Footcare

Tired Aching feet.

Corns, Hard skin, Verruca.

Fungal infected toe nails, or
 toe nails require cutting.

Diabetic feet also treated and
 regularly checked.

I can help to keep your feet
 looking and feeling good.

I am a trained Foot Health
 Practitioner to Diploma Level, fully
 insured & DBS checked.

I can do home visits via an
 appointment.

Call Penny: **07459 060709** for
 further information

MARK FITCH CHIMNEY SWEEP

- * BRUSH & VACUUM
- * CLEAN, RELIABLE SERVICE
- * COVERING ALL S.E. CORNWALL
- * DISCOUNT FOR MULTIPLE CHIMNEYS
- * COWLS & GUARDS FITTED
- * STOVES SERVICED



*Call
 Mark on:*

01579 350762
 07773 462643



QUALIFIED RAYNOR MASSAGE THERAPIST

RELAXING AND THERAPEUTIC MASSAGE TREATMENTS

Effective for many different types of chronic pain, sports injury, stress and tension related problems



CBD massage now available

APPOINTMENTS AVAILABLE AT

LISKEARD THERAPY CENTRE
LISKEARD PL14 3JB

THE WELLBEING CENTRE
LISKEARD PL14 6AT

Contact : Tina North

Phone : 07720 832322



Website : massage-therapy-cornwall.co.uk



R J Gardening & Handyman Services

All aspects of gardening and handyman work undertaken.

- ~Local and Trustworthy
- ~Hard Working
- ~Reliable and Experienced
- ~No job too small
- ~Competitive rates

Contact Raymond on:

07541 229064 or 01579 347622

raymond_pearcegb@yahoo.com

Find us on Facebook.



Fencing
 Paths & Steps
 Turf & Astro turf
 Driveways
 Retaining walls
 Digger work
 Footings & foundations

Patios
 Rendering
 Decking

And more

Free no obligation quotes

Call Rob on:

**07518246666 or
 01579 641802**

Window Cleaner
Window Cleaner

Also any upvc cleaned

i.e. fascias, gutters, etc.

gutters cleared & unblocked

Please phone Rob

07709 053464

Window Cleaner
Window Cleaner

Save Costly Energy!



**'A' Rated WINDOWS & DOORS
 at BEST PRICES EVER!**



Professionally fitted and finished by us with a
 10 year ins. guarantee.
 In all colours



NEW
**FACTORY SHOP
 SUPPLY ONLY**

For all your windows, doors, conservatories,
 fascia, trims, guttering and sealants

**7-10 DAY TURN AROUND ON WINDOWS,
 DOORS and CONSERVATORIES**

TEL: 01579 343425

FAX: 01579 344500

WEBSITE: www.solartecwindows.co.uk

EMAIL: sales@solartecwindows.co.uk

KEEPING JOBS IN CORNWALL

PJR Garden Services

Phil Rule

All aspects of garden
 work - grass / hedge
 cutting, patios, fencing
 etc.

Mobile 07387 449004



Group Travel

Enterprise Park,
Midway Road, Bodmin, Cornwall
PL31 2FQ
Tel: 01208 77989



COACH EXCURSIONS & TOURS

2021 PROVISIONAL DATES:

- 18th - 23rd APRIL - THE CHESTER ADVENTURE
- 1st MAY - TOBY'S GARDEN FESTIVAL
- 8th MAY - BADMINTON HORSE TRIALS
- 12th JUNE - FALMOUTH REGATTA/ SEA SHANTY
- 9th - 10th JULY - HAMPTON COURT & KEW GARDENS
- 8th AUG - GATCOMBE FESTIVAL OF EVENTING
- 28th - 29th AUG - GREAT DORSET STEAM FAIR
- 3rd - 4th SEPT - BURGHLEY HORSE TRIALS
- 19th - 24th SEPT - YORKSHIRE TOUR

GARAGE



- MOT TESTING CLASS 4, 5 & 7
- LIGHT / HEAVY COMMERCIAL INTERIM
- INSPECTIONS MINISTRY STANDARD BRAKE
- LIGHT & EMISSION TESTS
- REPAIRS UNDERTAKEN

FOR BOOKINGS AND A BROCHURE PLEASE CALL
01208 77989 / 01208 72669

Website: grouptravelcoachhire.com Email: grouptravelcornwall@btconnect.com

Martin Hoare – Local, Reliable, Competitive



WHEEL DIGGER FOR HIRE
ALSO AVAILABE 'BREAKER'
AND NEW CONCRETE
'CRUSHER BUCKET'

ALL AT COMPETITIVE RATES

GROUND WORKS
DRAINAGE
NEW DRIVEWAYS
SEPTIC TANKS &
'SOAK AWAYS' INSTALLED



LASER LEVEL FOR HIRE
QUOTES AVAILABLE



Phone 01579 363517

or

Mob 07863 291213



INDEPENDENT FAMILY FUNERAL DIRECTORS

Supporting families to arrange funerals with sensitivity, dignity and care.

- Flexible, caring approach, tailor-making funerals to suit your needs and budget.
- Open and transparent, affordable pricing.
- Free bereavement support sessions, open to all in our community, first Wednesday of the month, 10am - 12pm.
- Prepayment Funeral Plans available

For details of our services and prices, visit our website.



01579 362358 | www.fdhallfunerals.co.uk



Avalennek, Caradon Town,
Upton Cross, Liskeard
Cornwall PL14 5AR
Telephone 01579 363598
Mobile 07901 538132
chrisrounsevell@tiscali.co.uk

HOG ROAST EQUIPMENT HIRE AND MEAT SUPPLY

Hog Roasts For Those Special Occasions
Self Catering or Hassle Free Service
Everything done to your special requirements

CHRIS ROUNSEVELL
TRADITIONAL BUTCHER

Come and visit our recently updated
Tile & Bathroom showroom in PENSILVA

We offer a generous discount to all Pump Readers

Unit 24 Pensilva Ind Est, St Ive Road, Cornwall PL14 5RE 01579 362264



CORNWALL TILE
CENTRE

Pensilva Showroom

Open Mon - Fri 8.30am - 5pm
Saturday 9.00am - 1pm

Tiles & Mosaics for:

Bathrooms & Kitchens Living Areas Conservatories
Patios & External Areas Wet Rooms & Spas Swimming Pools
& All Commercial Applications

 atlas concorde

www.cornwalltile.com

OPEN FOR RETAIL, TRADE & COMMERCIAL ENQUIRIES

D.J.A. BUILDING SERVICES

ALL ASPECTS OF PROPERTY MAINTENANCE BUILDING & REFURBISHMENT

- * Bespoke Furniture and Kitchens
- * Wardrobes and Bookcases
- * Garden Sheds, Poultry Houses & Small Animal Shelters
- * Over 30 years' experience
- * Fully insured
- * References available
- * Free estimates
- * No VAT

Call David on 01579 364050 / 07767662635

Chiropodist

Fully qualified, experienced and insured Chiropodist/Podiatrist

- Nail cutting, corns/callus, diabetic foot care etc
- Personal home visits, groups and residential homes

**Contact Clare:
07757973709**



Westwood Garden Maintenance



Antony Watts

Grass Cutting, Clearance

Weeding, Turfing

Hedge Cutting

Patio Cleaning, Planting

Regular Visits / One-off Contracts

Residential & Commercial

FREE ESTIMATES

01579 362019 www.westwoodgm.co.uk 07952 094472



THE HOME OF WOOD

BULK DISCOUNTS AVAILABLE ON OUR 30 YEAR SERVICE LIFE POSTS



OUR GOLD TREATED STAKES AND POSTS ARE THE ONLY ONES AVAILABLE IN THE UK THAT ARE APPROVED BY THE WPA BENCHMARK FOR 30 YEAR SERVICE LIFE

For more information please contact one of our team



Bond Timber, Bake Sawmill, Trerulefoot, Saltash, Cornwall,

PL12 5BW

01503 240 308 stacy@whbond.co.uk

Pensilva Stores

Amazing Value

Premier
a great deal more from your local store
Mon-Sat. 7:30 AM. - 9:30 PM.
Sunday 8.00 AM. - 9:30 PM.

- ✓ Fantastic Special Offers every month!!! (See store leaflets)
- ✓ Come and Check out our great deals on Wine, Beer and Spirits
- ✓ Local Produce: Homemade Butter and Clotted Cream, Meat from our local butcher
- ✓ Cornish Fresh Fruit and Vegetables
- ✓ Fresh Bread, Pasties and Cakes
- ✓ Take Away Coffee, tea and hot chocolate
- ✓ Newspapers and Magazines, Greeting Cards
- ✓ Paypoint, Lottery

* **Free to use ATM** *
* **Card Payment** *

Friendly Staff + Service with a Smile !!!

Pensilva Stores is a family run business who have been serving local people and visitors for more than 21 years.

Higher Road, Pensilva, Liskeard, Cornwall PL14 5NQ

Tel: 01579 362547

MENDOLOGY

Garage Door Specialist

- Repairs
- Servicing
- Installations


Out of hours service
call Dave anytime 07974 442645

MENDOLOGY COMMERCIAL DOORS LTD
www.mendologydoors.co.uk

01579 363760

PensilvaCars

01579 363516

- ✓ MOTs Class 4
- ✓ Service
- ✓ Repair
- ✓ Tyres
- ✓ FREE Courtesy Car
- ✓ Car & Van Sales
- ✓ Diagnostics
- ✓ Air Conditioning
- ✓ 

We have offered a supply, fit & balance of tyre service for 10 years at competitive prices.

Most of our tyres can be supplied the same day.

LOCAL RECOVERY £45.00

www.pensilvacars.co.uk

pensilvacars@hotmail.co.uk

We can service and repair your car to manufacturer specification, keeping your dealer warranty without main dealer expense.





KEITH RICHARDS

Motor Body Repair Specialists

A family run business with fully equipped & maintained workshops & a focus on
Customer Care

- ◇ Motor Body Repair Specialist
- ◇ Mechanical Repairs
- ◇ Servicing to All Makes & Models
- ◇ Computer 4 Wheel Alignment
- ◇ 24 Hour Recovery Service
- ◇ Renovations & Re-sprays
- ◇ Member of RMI (Retail Motor Industry Federation)
- ◇ Latest Diagnostics (including specialists for VW, Audi, Seat, Skoda & Vauxhall)

With over 30 years' experience we aim to provide you with:- Value for Money -
Friendly Service - Professional Approach - Expert Advice that you Can Trust
(Visit our website for more details)

Pensilva Industrial Estate, St Ive Road, Pensilva, Liskeard, Cornwall PL14 5RE

Tel: 01579 362593

Email: keith@keithrichardsmotorbody.co.uk

Fax: 01579 363194

Website: www.keithrichardsmotorbody.co.uk

Wm. Newham & Sons ^{Est. 1835}

Proprietor Robbie Savill AWCB

**CHIMNEY SWEEPS
& BLACKSMITHS**



CHIMNEY SWEEPING

BIRD GUARDS, COWLS & POTS FITTED

CCTV INSPECTIONS & SURVEYS

STACK REPAIRS & REBUILDS

RIGID STEEL SYSTEMS ERECTED

STAINLESS STEEL and PUMPED CONCRETE
CHIMNEY LINING

STOVES SUPPLIED, INSTALLED & REPAIRED

FIREPLACE ALTERATIONS & RENOVATIONS

FULL RANGE OF FIREPLACE FURNITURE
made to order

01579 347777

need somewhere to stay ?
between homes ?
family/friends visiting ?

Cutkive Wood

Holiday Lodges

ideal for Pensilva
& St.Ive

please call Jackie on
01579 362216

J. J. Child

Plumbing and heating engineer.

Oil appliance service, repair and breakdowns.

Over 30 years experience

Call John: 01579 362336 or 07837 921086

