

# THE PARISH PUMP



August 2020  
Edition 465



## The Newsletter for the Parish of St Ives

Sorry, but the Parish Pump is online only, until further notice.



## Watching sport, 2020-style.

Cardboard cutout “fans” at a football match in Germany

## Disclaimer

The articles appearing in this magazine do not necessarily reflect the views of the Parish Council nor of the Parish Pump Editor.

## Parish Councillors Telephone List

Peter Haines (chair)	01579 362459	Alan Moss (vice-chair)	01579 362064
James Bruce	07411 192645	Marlene Carr	01579 362919
Martin Corney	01579 382450	Angie Haines	01579 362459
Rosemary Farley	01579 384810	Tony Hodson	07973 536964
Nigel Libby	07968 891814	Kath Parkes	01579 362005
Ivor Vaughan	07979 934604	Craig Vaughnley	01579 364083
Samantha Reilly	via Parish Office	01579 363096	
Sharon Daw (Cornwall Councillor)	07837 379305 slash.dash.daw@gmail.com		

## Meetings of St Ive Parish Council

**Physical meetings are discontinued for the time being.**

**Councillors will use other methods of communication so that important decisions affecting our parish can be taken democratically and in good time.**



**Devon & Cornwall Police**  
Building safer communities together

 **101**

Minicom 18001 101

### Police Community Neighbourhood Office

Your Community Support Officer is PCSO Steve Edser 30173.

email: CIOSNBMLiskeard@devonandcornwall.pnn.police.uk

To report a crime call 101 or go to [www.devon-cornwall.police.uk](http://www.devon-cornwall.police.uk)

In an emergency call 999

## **News about The Mel Bar and Millennium House**

After careful consideration and discussion with the Millennium House Staff, the Parish Council has decided **not** to open the Mel Bar for the time being. This decision will be reviewed at the end of July.

Millennium House is still closed but the council is looking at gradually re-opening. Please see social media for updates.

If you need to contact the Parish Council or Millennium House, you can leave messages in our **letter box** at the front of the building or call our volunteer help line on **01579 363096**. We will reply to emails sent to the **stiveparish@btconnect.com** as soon as we can.

### **Contact details for St. Ive Parish Council and for Millennium House**

Address for correspondence: Millennium House, Century Square, Pensilva PL14 5NF

General Parish matters should be raised initially with the Parish Clerk, Jenny Hoskin, who will present them to the Parish Council.

Telephone: 01579 363096, email: [stiveparish@btconnect.com](mailto:stiveparish@btconnect.com)

For accounts matters for the Parish and for Millennium House contact John Body, Finance Officer: 01579 362102, email: [millenniumhouseadmin@btconnect.com](mailto:millenniumhouseadmin@btconnect.com)

Millennium House enquiries and reservations: 01579 363096

email: [millenniumhouse@btconnect.com](mailto:millenniumhouse@btconnect.com).

On the web: Millennium House Website: [www.cornwallvenue.com](http://www.cornwallvenue.com)

Parish website: [st-ive-parishcouncil.gov.uk](http://st-ive-parishcouncil.gov.uk) Facebook: [facebook.com/stiveparishcouncil](https://facebook.com/stiveparishcouncil)

### **Parish Pump Information and Contact Details**

To contact the editor please email: [parishpump@btconnect.com](mailto:parishpump@btconnect.com)

or phone the Parish office: **01579 363096**.

Hardcopy submissions by post or by hand to the Parish office, Millennium House.

Softcopy submissions: By email to the editor in MS Word, MS Publisher, pdf, Tiff or jpeg. Please use A4 pages and minimum 16 point font as the Pump is initially produced in A4 size and reduced to an A5 booklet at the printing stage. If in doubt please contact the editor.

**Current Advertising Prices** including VAT at 20%

Per issue:    Quarter Page £7.50            Half Page £15.00            Full Page £25.00

10% discount for 12 months paid in advance.

Bargain Corner free ads by email to the editor or drop off at the Parish Office.

**Deadline for the Parish Pump is STRICTLY 15th of every month**

## From the Editor

For me, the last part of July was dominated by the preparations for the reopening of the All Being Well gym. I am grateful to Cornwall Council who provided a very useful online “webinar” explaining what measures we needed to take to ensure the safety of staff and clients. Amongst other things (including lots of cleaning) we have eliminated old processes that involved several different people handling the same bits of paper. This made me think about the Parish Pump and the matter of whether or not we go back to the paper version. The answer, for the moment, is “not yet”. Apart from the understandable reluctance of most of the distributors, it is likely that many residents of the Parish would not welcome receiving a newsletter through their door. So it’s “online” only again this month, I’m afraid, while we await developments.

Is it just me, or is the emergence from lockdown even more problematic than the lockdown itself? You knew where you were with total lockdown! Now I find myself constantly asking myself what is OK and what isn’t. It probably is just me; as I think I said last month, the range of different experiences of lockdown has been a real eye-opener!

Keep well. Joe.

## *All Being Well*

**is delighted to announce that the gym is reopening  
at 9am on Monday, August 3rd, 2020**

**Please note that, due to restrictions during the pandemic:-**

- **Maximum 4 members at a time, so advance bookings only.**
- **Please observe government social distancing guidelines.**
- **Other restrictions will be explained when you arrive.**

**Call 01579 363890 for more information  
or to book yourself in.**

## CHAIRMAN'S COLUMN

Well here we are in August and things are gradually opening up, but we must carry on with hand washing and distancing if we are not to risk another rise in the corona virus numbers.

At a council meeting in July it was agreed to keep Millennium House closed for a few weeks more until the next council meeting in August, when an opening date will be decided. However Millennium House will be available for health-related bookings, e.g. blood transfusion sessions and some fitness activities.

It was brought to the Council's attention that a considerable amount of litter and glass is being left on the recreation ground in Pensilva. The volunteers that in the past have kept this charity ground tidy have been unable to do so due to lock down and being shielded, so I would call on those that are dropping the litter to stop doing so. If anyone sees litter in the field, please pick it up and put in the bins provided. Hopefully we will get back to normal in the next few months!

We also have been informed by Age U.K that the community electric car is not being used, and if we do not increase the car's use then we may lose it! If anyone wants more details on how to use it please contact councillor Alan Moss. I know lock down has restricted travel but please as we start going out again, don't forget the car is there to be used.

It was nice hear that Kieth Richards (who does a lot of work in the community ) is home following his operation and we all wish him a speedy recovery.

I hope we now have a nice spell of weather so that we can all get out in the fresh air and enjoy ourselves. I must say a big thank you to all of you that are looking after neighbours and the elderly during these times, and please keep up the good work. Keep safe everyone.

Pete Haimes.

## MILLENNIUM HOUSE ELECTRIC VEHICLE

**USE IT OR LOOSE IT**.....We have had the AGEUK Electric Vehicle (EV) at Millennium House for about 12 months now, and it has only been used two or three times. AGE UK have indicated that, because of the infrequent use, they are considering moving it away from Pensilva.

The EV was considered by the Parish Council to be an asset to the People of this Parish and surrounding area. It is to help those who are unable to get about easily, e.g. those with mobility issues, to go to doctors' or hospital appointments, shopping, or for a day out, perhaps to an attraction in Cornwall.

Group Membership fee £36 / year  
Individual Membership Fee £18 / year

**Mileage rates:**

½ day rate = £25 (4 hours)

full day rate = £40 (9 hours)

Local Trips; Doctors/ Shopping /  
Hospital etc 50 pence per mile

Membership fees include VAT.

\*All mileage fees are donations &  
support the running & ongoing  
maintenance of the electric vehicle\*

Cheques to be made payable  
To AGE UK Cornwall and The Isles  
of Scilly and sent to:  
AGE UK Cornwall  
Boscawen House  
Chapel Hill  
Truro  
TR1 3BN  
or by Bank Transfer  
Sort Code: 30 98 76  
a/c: 00819611

**The Parish Council are looking for Volunteer Drivers for the Parish, to be called on to use the vehicle for those in the community who are unable to get transport, like relatives or neighbours, to appointments, or get to the shops. Please contact our Parish Clerk to register your interest, and we would encourage neighbouring Parishes to advertise this facility. Please make use of this unique facility.**

**To contact St Ive Parish Clerk email [stiveparish@btconnect.com](mailto:stiveparish@btconnect.com)  
or call 01579 363096**



## **PUBLIC CONSULTATION**

### **ON THE REPLACEMENT OF THE MILLENNIUM HOUSE ROOF**

Many of you who use Millennium House will be aware that the roof is in very poor condition. There are leaks and the metal is starting to corrode. It needs urgent action.

With this in mind, the Parish Council intends to apply for a Public Works Loan of £48,000, to be repaid over 20 years, to pay for the replacement of the roof panels.

We are inviting comments from parishioners on this project. Please send your comments in writing to the Parish Clerk at Millennium House or by email to [stiveparish@btconnect.com](mailto:stiveparish@btconnect.com).

**St. Ive Parish Council**

**Are you or your kids bored at home?**

**Want something to do? Well here's an idea!**

Send us your pictures, plus a caption, or more words if there is a story behind them. Or send us your stories, with pictures if there's a picture that goes with it. The Parish Pump will publish some or all of them next time.

There is no particular theme, just anything that you think would be suitable for, or interesting and/or helpful to other Parish Pump readers; something that will help others to pass a pleasant few moments during lockdown. Pictures can be photographs or original artwork.

This is not a competition, there are no prizes, it's just something that you might like to do!

You can send by email to [parishpump@btconnect.com](mailto:parishpump@btconnect.com), or deliver by hand or post to Parish Pump Editor, Brook House, Lower Middle Hill, Pensilva, PL14 5QF.



## Why Make Compost?

There are many reasons why. If you have a garden, making your own compost is a great idea!

Apart from the small initial investment in creating a container for the compost heap it saves you money over time.

It's better for the environment. It avoids the fossil fuels used to produce, package and transport bought compost to your garden. Composting at home for just one year can save global warming gases equivalent to all the CO<sub>2</sub> your kettle produces annually, or your washing machine produces in three months?

Unlike Cornwall Council's garden waste collection service, you can put raw plant material from your kitchen in your compost heap and waste soil from your garden (in small amounts).

It's good for the soil. It can help to improve the structure of your soil, maintain moisture levels and maintain a healthy soil pH. You will also be helping maintain a healthy community of soil flora and fauna such as the good old earth worm.

Feeding your plants with compost helps them stay healthy and be less susceptible to disease. And don't forget, grass is also a plant so don't forget to feed your lawn!

Adding well-rotted compost to your soil is like giving your plants a bag of sweets. They will love it – and it shows you love your plants too!

Composting is nature's way of recycling plant material. Being more aligned to nature's way of doing things has got to be more beneficial for us and the environment.

It's a great hands-on educational tool for children. It can teach them about recycling in nature, how to care for plants and the types of organisms that live on and in the ground.

### Compost Heap Containers.

You can either buy one ready-made or make your own. To buy one, follow the link on Cornwall Council's "Reducing your garden waste" page. Prices start at £19. They are currently offering 'buy one get one half price'.

Alternatively, if you have the time and inclination, you can build your own. There are several cheap and easy to build designs ranging from 4 stakes in the ground surrounded by chicken wire, to constructing walls from free waste pallets. If you want something a bit posher, you can buy some wood from the timber merchant instead. In all cases, there are plenty of how to instructions and videos, tips and advice on the internet.

A container just keeps the compost in a tidy space (and if you are adding kitchen waste helps keep rodents out). If you have the space and are happy for the compost heap to spread out a bit, you don't need a container. Just pile the garden waste in a heap and leave Mother Nature to do her work!



### Looking After Your Compost.

In a natural environment like woodland, the ground is the compost heap where leaves, twigs, dead plants, etc, create naturally rich and nutritious compost which automatically feeds the plants in the wood. In our gardens, to obtain healthy compost, we have to try and mimic nature's methodology. Again, there is a lot of information on the Internet on how best to do this, e.g. <https://www.recyclenow.com/reduce-waste/composting> .

So, give it a go! If you have a very small garden so aren't going to accumulate much garden waste, think about sharing a compost bit with one or more neighbours in a similar situation.



## **The new Anglican curate for our area introduces herself.**

To the Communities in St Ive, St Cleer, Pensilva, Quethiock, Merrymeet and Menheniot, Grace mercy and Peace from God our Father and the Lord Jesus Christ be with you!

What a pleasure to be asked to introduce myself via this letter to the Tribute cluster. After meetings with Becca and others in the diocese I received a letter from Bishop Philip confirming a curacy and I was delighted. Having had a placement with you all between Christmas and Easter this year, I look forward to serving you in Christ and becoming part of the team. I have been studying with South West Ministry Training Course over the last three years and have one final year left before ordination, God willing. This being completed, I will join you at the end of July 2021. I would appreciate your prayers, and I assure you of my prayers for you over the next year as we all prepare for the next exciting steps in our adventurous faith.

My personal journey, in a nutshell, brought me to Tavistock in 1998. I worshipped with the Methodist Church for many years where I felt a very strong calling on my life. Eventually I moved to Calstock, to the Anglican Church. Here I began to discern, with the local congregation and then the diocese, a calling to ordained ministry. It has been a very happy and blessed walk, trusting God to give me the strength to take the next steps (and complete the essays), working far more hours than I ought to have. I juggled study alongside a part time job as a primary school teacher and a commitment to my local church.

Most importantly, I am a mother of five wonderful young people and wife to Jonathan. Our youngest, Kerenza, is in Year 11 at Callington College and the other four, Jacob, Freyja, Megan and Esme are now grown up, living in Edinburgh, Bangkok and London. I know that one day Cornwall will call them home! They certainly appreciate filling their lungs with fresh air when they visit. As a family we enjoy the simple things, long walks, hearty home cooked food and lively debate.

Originally, I came from Yorkshire, from a small mining town. Yes, my Dad was a coal miner, all part of my heritage. Tin? Coal? Mining be in my blood! I made my way to York University to study. I continued living in that beautiful city until I found myself moving South, something I had vowed never to do but have never regretted. It is warmer down here but you mustn't get me into a debate about whether Cornwall or Yorkshire is 'God's own country'. My heart would be torn. On the upside, I do know that jam comes first and I can make both Yorkshire Puddings and Cornish pasties with equal skill.

So, I look forward to next year, to being a part of your church family, sharing prayer and study and helping to bring the good news of Jesus Christ to our communities. For us all, I pray, 'Lord, set our hearts on fire with love for you'.

Every Blessing, - Li Selman



From Rev. Becca Bell.

### **Lessons of Lockdown!!**

Hopefully most of us are beginning to enjoy some of the benefits of coming out of lockdown. I know for some of us we are still shielding or choosing to continue to do so... although there is less risk of catching CV-19, the effects of doing so should we be unlucky would be no less devastating than last month. But for the majority we have been able to see family again, we've found it easier to go for walks, and even enjoy a cheeky ice cream or two.

There's no doubt that for many, there is relief that we are finding a little of "normal" again. Some of what we gave up for lockdown (and those things that shielders are still missing) were not healthy for us to go without. This morning I had breakfast with a friend at Clifford's in St. Cleer. We have boys at school together and both needed to talk some things through with a friend. Both of us commented on how we had never realised how often we process things or get things off our chest in short conversations at the school gate or over coffee from time to time. And our mental health has suffered as a result. It has been far harder to think through difficult situations, or find solutions, or to approach things with a positive mindset without our usual, ordinary human interactions and routines. It felt good to talk things out this morning and to find ourselves feeling more positive just from a conversation and a good coffee (that someone else made and subsequently washed up!!!).

But despite the difficulties of lockdown, most of us have also rediscovered some real pleasures and a healthier blend to life. Last night I was beginning to get stressed about the prospect of getting children to two different places with one car (my work car is off the road currently) and rationalising that the cost of taxing and insuring it for one evening a week was ridiculous. Suddenly we are beginning to feel stretched as we begin to make room for the old routines and pressures of work, kids clubs, and generally fitting life in!! I want to push back on that. During lockdown many people have spent more time walking, in their gardens, reading, and even those of us who have torn our hair out trying to keep up with work and engage our kids just a little with their daily school work have hugely appreciated the extra time with our family. I don't want to lose what we have found. I know that the life we were living before was unsustainable. I remember driving up to St. Cleer for the umpteenth time one week and thinking "Oh God, how much more?!" Life was feeling full on and pressured with the pull between taxiing boys to their much loved clubs, the school run, keeping up with work, and trying to find time for the things that keep me feeling like me. I know many people were feeling similarly in their varying contexts and time of life.

Continued on next page

## Lessons of Lockdown!! ...continued from previous page

One of the reasons I have been so cautious about going back to worship in buildings (aside from the fact it won't look anything like we are used to and will take a lot of thought and work which I'm simply too tired to countenance at the moment) is that I do not want to go back to what was. Sundays were lovely but it was a struggle to populate rotas, and across most of our churches the congregation was diminishing with little growth. There are exceptions to this but not significantly so. If we are going to be brutally honest, I think we would struggle to see a future beyond ten or fifteen years. I would love us to use this opportunity not only to be cautious about responding to the pandemic in our choices but to consider the opportunity for change. I have asked folk to fill in a questionnaire and at the heart of it I want to ask two questions. Firstly, what really sustains us in our faith and enables us to grow. Not stay the same, but grow as a church and as individuals? Secondly, what gives us opportunities to grow in our mission to our community, both in terms of practical service and of sharing our faith.

The church is an organisation that should exist more for the sake of those outside of its core membership than for those within it. All of us as Christians have a calling to share our God's love with those around us, it's not an optional extra for the really keen ones!! We all of us have a responsibility to grow in our faith and to grow in relationship with God and each other. I think that the Church's failure to really grasp and invest in this has led to much of my generation falling away from church as soon as real life issues hit, and the faith they had been taught as children failed to withstand the reality of failed friendships, loss, and grief. My deepest longing is to see the churches I serve rediscover the reality of being church; of being God's people. Some of that is enabled by our rituals and traditions, and I want us to hold onto that and cherish it. But I also see that at times we have served the ritual and tradition rather than the ritual and tradition enabling God's people to be.

As we come out of lockdown I hope that we can pin point those things that enable us to be; those things that bring us real joy and make us excited to get to church. I hope that we can return to something that is irresistible to us and that that we can't wait to share with our friends and neighbours. I hope that we can invest in activities that really feed us and that those outside our church community at this time see as intriguing and attractive.

The church will always seem a bit odd to most people. After all it is made up by us! Like any family it is weird, slightly dysfunctional, and imperfect. But it should be a place and a group where all are genuinely welcome, where faith is central, and where God's love is expressed fully.

We couldn't keep going as we were; we were running out of money and people, and were not far away from crisis. But it is important to take forwards the routines, rituals, and traditions that make us who we really are, and serve us in growing in faith and in number.

I wonder what it is going to look like in a couple of years time?!

Received from Geoff Cox

### **Fear not. Matthew 14, 22-33.**

I'm told that the words "Fear not", or in some translations "Do not be afraid", feature 365 times in the bible. I haven't attempted to count them myself, however I do know they feature often in our bible readings.

The reading about Jesus walking on water is one where Jesus uses those words. The disciples are in the middle of the sea of Galilee caught in a storm, terrified of drowning, then they see the figure of Jesus walking towards them on the water, which would be frightening in itself, and Jesus greets them with the words "Do not be afraid".

When Jesus appeared to the disciples after his death and resurrection his first words were "do not be afraid".

The world seems to be caught up in a storm-like crisis caused by the Covid 19 virus. We are buffeted about by the chaos caused by the disease throwing society into confusion.

It's right that we take all the precautions we can for ourselves and for those around us. Social separation, hand washing and face coverings if necessary, but we should not be paralysed by fear. As Jesus would say, "fear not".

Jesu also said that he came to bring abundant life. John 10,10 says He wants us to have a full and enjoyable life. Not a life full of fear.

While in the Navy, when we were about to enter stormy weather we would batten down the hatches, tie all the loose furniture down and, if required to go on deck, we would wear lifejackets. Sensible precautions but it didn't stop the normal activities of the ship; we carried on the process of everyday life.

The media repeatedly comes up with dire predictions of a second wave and of tens of thousands of deaths. It's only when you look further to hear the whole story that it is only if we take no precautions. It's by no means certain that there will be a second wave.

It is thought that we may have to live with the virus for years to come. The word I focused on was live; do we hide behind locked doors, do we refrain from seeing friends and families, do we stop the life that Jesus wants us to live? "Do not be afraid"

Much has been gained by our experience of lockdown. We do have a stronger sense of community, knowledge of the vulnerable within our community, we are conscious of the isolated and lonely. These things need to be valued and used to enhance our lives together. To live abundantly and not be afraid.

We have got to learn to live with the virus or the life we have will be without joy.

## **Rev. Becca Bell explains what has been going on at Merrymeet Church, and the implications for other Anglican churches in our area.**

It had been known since 2007 that there were issues with Merrymeet Church roof. The quinquennial inspection in 2017 confirmed that the nail rot problem required action. The previous year it had been discovered that the flèche (the tower/spire) needed extensive work.

Over the following two years the Parochial Church Council (PCC) worked hard to find solutions. The roof required a complete rebuild and the flèche would be included in the work. Last summer an intermediary repair was done to ensure that it was at least safe for the coming winter storms.

Meanwhile a small team made up of Merrymeet congregation members and residents, headed up by PCC member Bryan Bradbeer, began work on a proposal to the National Lottery Heritage Fund for a community scheme grant that would include putting the roof right. Other funding options were not open as the church doesn't quite meet the criteria either for heritage alone, or for community use alone.

The short story is that the funding possibility closed down and the PCC were faced with a bill for the roof which was unattainable. Therefore, the only reasonable and responsible option was to "move toward closure". In Church of England parlance, this opens up a process which includes community consultation. Unfortunately lockdown has meant that diocese lawyers have been unable to access documents to inform what sort of process this should be. It's been incredibly frustrating and has given rise to lots of unpleasant rumours and accusations. The fact remains that the PCC took the decision because they didn't have the means to fix the roof, and they needed to act before the roof deteriorated much further and became unsafe.

It may be that this decision will evoke enough support to fix the roof and ensure the congregation can be financially self sufficient for the foreseeable future. We don't know firm figures for this, but a review done in 2016 estimated around £150,000 including the flèche and professional fees. This will need to be checked with proper quotes. This would be wonderful! We have already seen a generous pledge to help patch the roof to buy us some more time. I hope that in that time the PCC, congregation, and wider community can come to a decision that results from exploring all options together.

On **September 14th** we will have a public meeting at St. Martin's Church, Liskeard (so we can fit as many in as possible!) to explain more fully how we have arrived at this difficult decision and to look at possible ways forward. My hope is that we may also may know the status of the building and so have a clearer idea of what is required of the PCC, but since it sounds like accessing the documents is like accessing the restricted library section at Hogwarts, this may not be happen.

All of this has underlined the necessity for communities to recognise how vulnerable their church buildings are. Most are now running out of reserves and all the churches in our cluster run the risk of running into similar difficulties in the future, including St Lalluw's, Menheniot. In all of this I want to urge folk to consider that our buildings should serve the people, not the other way round.

It remains to be seen what the outcome of the situation at Merrymeet will be, but prayers are ongoing, and I hope that folk will work together to find a solution, and seek to discern the mission of the congregation and the church moving forwards.



## Remember loved ones by moonlight and support Children's Hospice SW.

Children's Hospice South West (CHSW) has had to adapt many things over the last few months including the care and support it offers to children, as well as its fundraising events which help to fund the vital support it offers to local families.

CHSW's 11th annual Moonlight Memory Walk was due to take place in Falmouth in March and would have seen hundreds of people completing the 5 mile sponsored walk around the town in memory of loved ones. The event was postponed to 26th September however the charity has decided to use this opportunity to adapt the event and open it up to people across the south west and beyond.

The charity is inviting people to remember and celebrate the life of a loved one and raise vital funds through its new Memories by Moonlight event which will include some elements of the annual Moonlight Memory Walk but with the flexibility for people to be involved however they wish.

Instead of being held on the Moor a Memories by Moonlight ceremony will be broadcast live on Facebook from CHSW's Little Harbour children's hospice in St Austell at 9pm on Saturday, September 26, giving people the opportunity to light a candle and join together virtually for a special evening of reflection.

The poignant and uplifting ceremony will feature readings from all three of the charity's children's hospices – Little Harbour, Charlton Farm near Bristol and Little Bridge House near Barnstaple. It will also include music, poems and a two-minute applause to celebrate loved ones whose names will appear on the screen.

Kiley Pearce, Events Fundraiser for CHSW said: "We are obviously sad not to be able to bring the Moonlight Memory Walk to Falmouth this year as it is such a special evening, however we are delighted to have this alternative option."

To register to join the Memories by Moonlight ceremony simply visit [www.chsw.org.uk/moonlight](http://www.chsw.org.uk/moonlight). Registration is just £10 and a memory pack, along with details of how to access the Memory Ceremony, will be sent in the post. For more information about the event, call the CHSW Fundraising Team on 01726 871800.



Making the most of short and precious lives across the South West

[www.chsw.org.uk](http://www.chsw.org.uk)

Registered Charity No. 1003314



## **HELP FOR PEOPLE SELF-ISOLATING DUE TO CORONAVIRUS.**

With the current Coronavirus outbreak, the Government requires certain groups of people to self-isolate at home.

St Ive Parish Council has set up a hub for anybody needing help during the Coronavirus outbreak and especially those who are self-isolating. The hub will be staffed by volunteers and can be accessed via the Millennium House reception number (01579) 363096.

If you are self-isolating, please let the volunteers at Millennium House know by calling (01579) 363096. The volunteers will do what they can to help you with shopping, prescriptions, etc., and will try to provide up to date information when needed. Just call (01579) 363096.

At the time of writing, the groups being asked to self-isolate include:

- People that have been in contact with anyone who has been confirmed to have the virus.
- People over 70 years old.
- People with 'underlying conditions'.
- Anybody who receives a letter from the NHS recommending self-isolation.

If you belong to any of these groups of people, you must follow the Government and NHS guidelines which are available online. If you cannot access the information you need, please ring the Millennium House volunteers on (01579) 363096 and they will try to help.

Any volunteers who would like to help, please call (01579) 363096. If you are already helping someone who is self-isolating, please call (01579) 363096, simply to let us know.

**SAINT IVE PARISH COUNCIL**

# **CORONAVIRUS**

We at PENSILVA STORES are very concerned for some villagers that may have to “self-isolate” and the plight and vulnerability of the more mature villager that cannot get to the shop for their needs. We will endeavour to get a FREE DELIVERY system operating so that we can try to alleviate the situation. We will hopefully achieve this best by recruiting some volunteers that can help.

Any person that can help please leave their Name & Number at the counter. We are looking at different ways to assist customers.

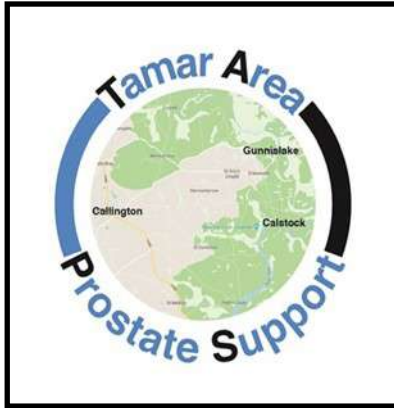
**START DATE TUES 24<sup>TH</sup> MARCH 2020**

PENSILVA STORES will close to the general public for an hour on every Tuesday & Friday between 1PM -2PM. It would be an opportunity for the more mature customers to shop.

**01579 362547**

**PLEASE BE AWARE THAT THIS COULD  
CHANGE AT VERY SHORT NOTICE & IS  
SUBJECT TO GOVT DIRECTIVES.**





As a result of COVID-19 our monthly meetings are postponed until further notice. We are still available to support anyone who needs us during this period and have members who have experience of various surgical procedures, radiotherapy, and hormone therapy. If you are recently diagnosed and just want to have a chat about your treatment or your options, don't hesitate to make contact.

TAPS membership is free and open to men and their partners. For more information on TAPS please contact Chris Greensted by phone on 01822 834797 or by email to [tapsinfo555@gmail.com](mailto:tapsinfo555@gmail.com).

Other excellent sources of support are: -

Prostate Cancer UK (PCUK): 0800 074 8383

Tackle Prostate Cancer (UK): 0800 035 5302

The Chestnut Appeal: 01752 792736

(Derriford Hospital)

The Mustard Tree Centre: 01752 430060

(Macmillan Cancer Support)

Reverend Becca Bell has asked us to mention the St John's Church Facebook page where she will occasionally be uploading live videos and other content. You can find it here:

<https://www.facebook.com/St-Johns-Church-Pensilva-690472271346237>

# WANTED

OLD TOOLS - ANY TRADE AND WOODEN TOOL BOXES  
OLD BICYCLES, PARTS & ACCESSORIES - OLDER THE BETTER  
OLD TOYS AND GAMES PRE-1980  
OBSOLETE CAR PARTS  
OLD BOOKS, COMICS, MAGAZINES, PRE-DECIMAL.  
**CASH ON COLLECTION - 07492 866255**

## *All Being Well*

Your local, friendly gym.

**Due to the COVID 19 outbreak we have been obliged to close until further notice. We are doing everything we can to ensure that we are ready to reopen as soon as it is safe to do so.**

**Term memberships will be carried over until we reopen.**

If you have any questions please call Joe on 01579 364016 or email [abwgym@gmail.com](mailto:abwgym@gmail.com) or visit our website [www.abwgym.co.uk](http://www.abwgym.co.uk)

Over 20 years working in our local community to improve health, fitness and well being.

## **Debbie Hicks - Counselling and Psychotherapy**

*Caring, confidential counselling for all.*

*I work in a therapeutic relationship to help you understand yourself better.*

*I offer a warm, approachable, relaxed environment for you to untangle your thoughts and emotions.*

*More info on my website or by contacting me.*

**[www.debbiehickscounselling.co.uk](http://www.debbiehickscounselling.co.uk)**

**Email: [debbiehicks10@gmail.com](mailto:debbiehicks10@gmail.com)**

**07851 133782**



# Pensilva Post Office

Located through the Café on the 1<sup>st</sup> floor of Millennium House



## Opening times during lockdown:

Tuesday - 9am to 1pm

Wednesday - 9am to 12 noon

Friday - 9am to 12 noon

**Note - Back open on Wednesdays**

**The travelling post office at St Ive Institute is open on Wednesdays, 10:30-12 noon.**

## Saint Ive Parish tree-planting survey

Please let us know about any trees that you plant within the Parish. We will include them in our own survey and we will notify the Forest for Cornwall on your behalf, if appropriate.

Contact us by phone: 01579 383967, or by email:

[parishpump@btconnect.com](mailto:parishpump@btconnect.com), or via the Saint Ive Parish

Climate Action Group Facebook page. Pictures very welcome.



# Bargain Corner Free Ads up to £50

Ads are free for items up to £50. £5 charge for items over £50. Please ring the Parish Office on **01579 363096** or leave a note at Millennium House reception or email [parishpump@btconnect.com](mailto:parishpump@btconnect.com).

**\*\*\*Please let us know when your item has sold\*\*\***

**Wheel & Tyre.** New. Size 195/50 R15. **£50. 01579 383054.**

**Canon IP2700 Printer. £20**  
**Computer screen 19" £20.**  
Epson Perfection v350Scanner Photo **£20**  
Sony Revia 42" TV. **£45.**  
All in working order. **01579 363200**

Set of 3 **suitcases**, red, vgc, Antler, **£40** ono. **07770 747353.** Pensilva area

**Car seat.** Fisher Price FP2000 Safe Voyage seat used from birth. Good condition. Used about 5 times as extra seat at Nana's house. **£10.**  
**01579 383967 or 07933 960113 - St Ive**

Toshiba **sewing machine £30.** New **pond liner 5m x 5m £30.** Five **Crittall windows 900mm x 1000mm approx.** Suitable for shed or greenhouse. **Free. 01579 363573**

Set of **Snow chains**, new and unused fit 14" to 19" rims, self adjusting. **£40**  
Pensilva **01579 362207**

Approx. 2,200 **copper disc rivets for fibre cement roof slating. £10.**

5 Medium size **Kit Bags** in reasonably good condition (no cords). **£25** the five. Set of 5 collectible **Meerkats.** VGC with certificates. **£30** the set of 5 or **£10** each. 2 large size lightweight camouflage military jackets **£5** each. **Tel 01579-384658**

2 x Medium Weight **Car Ramps £20.**  
**Push Mower £5. 01579 363199**

**Maximuscle home gym system £100** ono. Black leather **chaise longue.** Excellent condition. **£100** ono.

**Scelextric Sport Le Mans set.** Still in box. Great condition. **£100.**

**Plastering gear:** 110v paddle mix with transformer, various trowels, hawk and other bits. Good for DIY etc. **£70** ono.

Easycamp Tour Ligata **6 berth tent.** Used only 3 times. **£100** or offers.

Dark brown **leather chair. £50**

**07980 380224 - Pensilva area.**

Brown speckled **carpet**, 2m x 5m. Brand new (over ordered). **£50.**

Arch design **headboards. £20** each or **£35** pair. **01579 362211**

**PLEASE LET US KNOW WHEN YOUR ITEM HAS SOLD**

## **PENSILVA VILLAGE HALL**

Due to the Coronavirus outbreak all activities in the hall are cancelled until further notice.

Anyone wishing to book the hall for future meetings, birthday parties or fundraisers please contact Peter or Jackie Browning on **01579 363212** or email **peterpensilva@gmail.com**

Please note that as well as hall rent there is a coin meter for heating at 60p/hr.



## **MOBILE LIBRARY—Suspended**



The mobile library and all Cornwall Council library services have been stood down with effect from March 23, 2020.

The information service continues at Luxstowe House, Liskeard.

Cornwall Library Members can access a

wealth of online reading- ebooks, Audiobooks, newspapers and magazines, comics and eGraphic novels. Details on the Cornwall Council website.

All subject to ongoing Government advice.



## **Struggling with Sight Loss?**

iSight Cornwall offers practical help to people living with sight loss in Cornwall including:

Low Vision: Advice for low vision aids

Assistive Technology: Advice on products

Benefits Advice: Assistance to claim entitlements

Equipment Demonstration: Advice on gadgets

Social Clubs & Activities: Links to clubs & activities in the county

For more details Telephone 01872 261110 or visit

[www.isightcornwall.org.uk](http://www.isightcornwall.org.uk)

# ADVERTISING SECTION

## Please support our advertisers!

### Advertisers please note:

Due to restrictions in place as a result of the COVID19 outbreak, the Parish Pump is currently being published online only. For as long as this situation persists, we will continue to run the ads placed by our regular advertisers FREE OF CHARGE. For those of you that have paid in advance, the end date of your advertising run will be extended accordingly.

New and occasional advertisers, please call the editor on 01579 364016 to discuss. Many thanks.

### **TRADITIONAL STONE SERVICES**

**CLASSIC & TIMELESS STONE MASONRY AND LETTERING**

**MEMORIAL CLEANING**

**COMMISSIONS TAKEN**

**01579 363693 OR 07507 782282**

### **Alford Joinery - For all your joinery needs**

Specialists in bespoke doors, windows, staircases, conservatories, etc.

- 20 years experience
- Large or small jobs
- All joinery hand-crafted
- Top quality FSC certified timbers
- All joinery can be fitted if required.

01208 873444 or 07757 666460

[info@alfordjoinery.com](mailto:info@alfordjoinery.com)

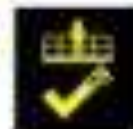
[www.alfordjoinery.com](http://www.alfordjoinery.com)



# Liskeard Home Improvements

*Complete property refurbishment & building maintenance*

- Tiling specialist
- Decorating & wall papering
- Carpentry
- Plastering & dry lining
- Plumbing & electrical
- Bathrooms - wet rooms - kitchens



H: 01579 362006 M: 07889 218710 E: scottberridge@me.com

[liskeardhomeimprovements.co.uk](http://liskeardhomeimprovements.co.uk)

## **ADVERTISE HERE!**

This box for **just £15 per month** including VAT.

**10% discount** for a 12 month order.

i.e. **£11.25 + VAT** per month for 12 months

See the full tariff on page 3

Place an advertising order now and  
you may qualify for free advertising  
during the Covid19 Lockdown<sup>3</sup>

## **PENROSS**

Rosecraddoc Lodge Holiday Bungalows  
(Between Pensilva & Lisheard)

Ideal for family & friends coming to visit!



Refurbished in 2018. Sleeps 4. Electric, heating, bedding & towels inc in rent. Patio. Free wi-fi. Follow us on Facebook.

Sorry no pets or smoking.

Contact Julie Tucker on 01579 362221 or

email [penhargetfarm@gmail.com](mailto:penhargetfarm@gmail.com)

for 15% discount

## **NICOLA GREENE**

BSc (hons) Podiatry MChs

HPC Registered Chiropodist/Podiatrist

**Home Visit Practice treating all  
your foot care needs:**

- Nail Cutting
- Corns and Calluses
- Thickened Nails
- Dry Cracked Skin
- Verrucae
- Foot Pain
- Diabetic Foot Assessments
- Wound Care

**T: 01579 590027**

**M: 07786164205**

**E: nicki\_greene@yahoo.com**

# **JPH**

## **plastering and Rendering**

**Internal plastering**

**Internal and external rendering**

**Internal and external painting and decorating**

**Property maintenance**

**Landscaping and land management**

**For estimates and no obligation quotes contact Justin on;**

**07539 296799 or @ JPH garden and home maintenance.**



# Debbie's Care Services Recruitment Agency

**Tel. 0777 948 3230**

Hello, my name is Debbie. I am a local lady who has been working in the community for over 30 years. I run a Care Recruitment Service placing fully trained carers into community care roles.

We provide the following services and more!

- Assisting bathing / showering
- Preparation of meals
- Cleaning / Shopping / Ironing
- Companionship / Friendship and emotional support
- Assisting with mobility
- Day, Evening and Night Care

## **DO YOU NEED A HELPING HAND?**

Reliable, friendly,  
experienced, mature  
local resident offering  
the following services:



**Cleaning      Ironing**

**Shopping      Light Gardening      Dog Walking**

CRB/DBS checked and fully insured.      Competitive rates.

**Contact Jess:** Telephone or text: 07934 764 327.



Email: [homeangel77@yahoo.com](mailto:homeangel77@yahoo.com). Find us on Facebook

# **Matt's Windows**

**Repair of Windows, Doors  
& Glass Unit Replacement**

**T: 01579 641228**

**M: 07533 387368**



## **PENSILVA GARDENER**

**20 years experience in Garden  
and Countryside skills.**

**All garden work undertaken.**

**Call Chris on 01579 383047**

**or 07792 936413**



KV Accounting Solutions

ACCA

## Local Accountant offering fixed fee accounting services

With over 20 years experience, I am a fully qualified, friendly, local accountant

- |   |  |
|---|--|
| ✓ Annual Accounts for Sole Traders and Partnerships | ✓ Self Assessment tax returns                        |
| ✓ Book Keeping & Payroll                            | ✓ iXBRL tax filing                                   |
| ✓ Personal Tax Planning                             | ✓ Tax investigation Fees Insurance                   |
| ✓ Company Accounts                                  | ✓ Company Secretarial work                           |
| ✓ Business Support & Advice                         | ✓ Tax calculations for Sole Traders and Partnerships |

Kate Vaughnley FCCA - Chartered Certified Accountant  
Website : [www.kvaccountingsolutions.co.uk](http://www.kvaccountingsolutions.co.uk) or Email : [katevaughnley@gmail.com](mailto:katevaughnley@gmail.com)  
Telephone : 01579 364083

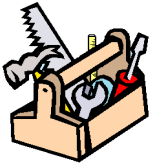


**Gas Services**  
NATURAL GAS - LPG - OIL  
BOILER INSTALLATION  
BOILER SERVICE & REPAIR  
LONG WARRANTY FREE QUOTES  
**07859848288**  
[bagasservices@outlook.com](mailto:bagasservices@outlook.com)



# KEEP IT TIDY

General Property Maintenance  
including Decorating, plus Electrical



**HONEST PRICE**  
for  
**QUALITY WORK.**



**No Job Too Small**

**Kit Rickard**

18 Higher Glen Park  
Pensilva

**Phone:** 01579 363378

**Mobile:** 07855 699071

**Email:** [KITKeepItTidy@hotmail.com](mailto:KITKeepItTidy@hotmail.com)



**FOR ALL YOUR CELEBRATION NEEDS**

Visit our shop: 12 Fore Street, Callington

Call us on 01579 384386

Find us on Facebook or visit our website:

**[www.victoriaeyton.co.uk](http://www.victoriaeyton.co.uk)**

- Helium Balloons - Balloon Arches -
- Bespoke Balloon Designs -
- Personalised Balloons - Partyware -
- Huge selection of greetings cards -
- **Weddings, Parties and Corporate events catered for.**

## **DOG GROOMING**

**40 YEARS EXPERIENCE**



**SMALL and MEDIUM Dogs**  
Groomed to Your Request

**LISKEARD AREA**  
Inquiries Welcome

**Call Patricia: 07517 658862**

28 TO YOU OR TO ME



Domestic Electrical  
Property Maintenance  
Interior & Exterior Work  
Carpentry :: Decking  
Kitchens :: Bathrooms  
Wall & Floor Tiling  
General Plumbing

**MCCARTHY PROPERTY MAINTENANCE**

**Electrical Safety Register** incorporating  
ELECTSA  ECA  
Certification Ltd

**HIGHLY REGARDED LOCAL BUILDER**  
**COMPETITIVELY PRICED**  
**COVERING THE SOUTH WEST**

Contact Dominic

07968 599 675

01579 362 945

[info@mccarthypropertymaintenance.co.uk](mailto:info@mccarthypropertymaintenance.co.uk)

**[www.mccarthypropertymaintenance.co.uk](http://www.mccarthypropertymaintenance.co.uk)**

**Tom Marshall**

**TM Plastering**

Plasterer and Property Care

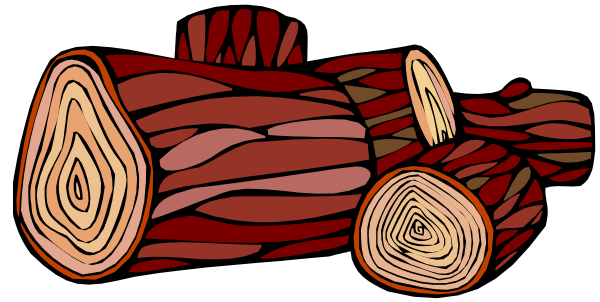
**07544819284**

Tommarshallcornwall@gmail.com

**Free estimates**

- Internal plastering
- Internal / external rendering
- Damp proofing
- Stud Walls
- Patio laying
- Chimney repairs
- Pointing
- Painting

**SEASONED LOGS**



**MIXED LOAD**

or

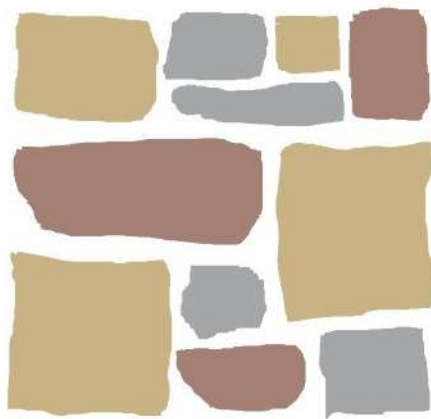
**HARDWOOD**

**Tel. Jonathan**

**Mobile 07966 070725**

or

**01579 363157**



**JUST IN**

**STONE**

Maintaining and preserving our countryside for the benefit of all

**Dry Stone Walls**

**Cobblestoning**

**Stoned faced walls**

**Hedgelaying/steeping**

**Land management**

**All aspects of Landscaping**

**Mobile: 07539 296799**

**Email: just.in.stone@outlook.com**



# GENERAL GARDEN & HOUSE MAINTENANCE

**NO JOB TOO SMALL**

Call to discuss your requirements.  
NO OBLIGATION quotes given.

One off jobs or regular work catered for.

Here are some examples...

## OUTSIDE

MOWING

HEDGE CUTTING

FENCE PAINTING

BOARDER WEEDING

PATIOS & DRIVES

CLEANED

## INSIDE

WINDOWS CLEANED  
INSIDE & OUT.

PAINTING

CLEANING

SHOPPING

IRONING

**CALL ANDREW CARLIN**

now on:

**07407 323888**

Thank you.



## Affordable Counselling

Caring, confidential,  
non-judgemental

- Increased confidence and self esteem
- Help to cope better at difficult times
- Improved relationships
- Clarify confused thoughts & feelings
- Assertiveness
- Personal insight
- Improved emotional health
- Available for youth and adults

**Isabelle McGarahan BA, PGCE**  
**Dip in Therapeutic Counselling,**  
**Accredited ACC, DBS cleared**  
**[www.im-counselling.org](http://www.im-counselling.org) email:**  
**[isabelle@im-counselling.org](mailto:isabelle@im-counselling.org)**  
**01579 344090/07857326229**



**P BRADLEY PLUMBING & HEATING**

Email: [info@pbplumbingheating.co.uk](mailto:info@pbplumbingheating.co.uk)

Web: [www.pbplumbingheating.co.uk](http://www.pbplumbingheating.co.uk)

Facebook: @PBradleyPlumbingandHeating

**NO JOB TOO BIG OR SMALL**

**24hr Emergency Call Out**

**Based in Liskeard**

**Call Today 07598956760**

***"The complete bathroom  
installation service"***

**New bathrooms fitted,  
floor and wall tiling specialist**

**General Plumbing including:**

- Bathroom makeovers
- Dripping taps and burst pipes
- Pump and cylinder changes
- Radiator upgrades and additions
- Specialist in Leadwork
- No job too small
- No Call out charge



**Friendly Service, Quality Work**

**NO VAT**

**City and Guilds Qualified  
established 1983**

**Call William Hale on**

**Tel: 01579 362132 Mobile: 07826 699719**



LPG Bottled Gas  
 Patio, BBQ & Camping Gas  
 Kiln Dried Firewood  
 Coal & Smokeless Fuel  
 Eco Heatlogs  
 No Contracts  
**FREE DELIVERY**



**01208 816827**

sales@loganslogs.com  
 www.loganslogs.com



- Commercial Gases
- Welding & Cutting Gases
- Food & Drink Gases
- Balloon Gases



## Heel 2 Toe Footcare

Tired Aching feet.

Corns, Hard skin, Verruca.

Fungal infected toe nails, or  
 toe nails require cutting.

Diabetic feet also treated and  
 regularly checked.

I can help to keep your feet  
 looking and feeling good.

I am a trained Foot Health  
 Practitioner to Diploma Level, fully  
 insured & DBS checked.

I can do home visits via an  
 appointment.

Call Penny: **07459 060709** for  
 further information

## MARK FITCH CHIMNEY SWEEP

- \* BRUSH & VACUUM
- \* CLEAN, RELIABLE SERVICE
- \* COVERING ALL S.E. CORNWALL
- \* DISCOUNT FOR MULTIPLE CHIMNEYS
- \* COWLS & GUARDS FITTED
- \* STOVES SERVICED



*Call  
 Mark on:*

01579 350762  
 07773 462643





# QUALIFIED RAYNOR MASSAGE THERAPIST

RELAXING AND THERAPEUTIC MASSAGE TREATMENTS

Effective for many different types of chronic pain, sports injury, stress and tension related problems



CBD massage now available

APPOINTMENTS AVAILABLE AT

LISKEARD THERAPY CENTRE  
LISKEARD PL14 3JB

THE WELLBEING CENTRE  
LISKEARD PL14 6AT

Contact : Tina North

Phone : 07720 832322



Website : [massage-therapy-cornwall.co.uk](http://massage-therapy-cornwall.co.uk)



## R J Gardening & Handyman Services

All aspects of gardening and handyman work undertaken.

- ~Local and Trustworthy
- ~Hard Working
- ~Reliable and Experienced
- ~No job too small
- ~Competitive rates

Contact Raymond on:

07541 229064 or 01579 347622

[raymond\\_pearcegb@yahoo.com](mailto:raymond_pearcegb@yahoo.com)

Find us on Facebook.



Fencing  
 Paths & Steps  
 Turf & Astro turf  
 Driveways  
 Retaining walls  
 Digger work  
 Footings & foundations

Patios  
 Rendering  
 Decking

**And more**

Free no obligation quotes

**Call Rob on:**

**07518246666 or  
 01579 641802**

Window Cleaner  
**Window Cleaner**

Also any upvc cleaned

i.e. fascias, gutters, etc.

gutters cleared & unblocked

Please phone Rob

**07709 053464**

Window Cleaner  
**Window Cleaner**

**Save Costly Energy!**



**SOLARTEC**

Windows &  
 Conservatories Ltd

**'A' Rated WINDOWS & DOORS  
 at BEST PRICES EVER!**



Professionally fitted and finished by us with a  
 10 year ins. guarantee.  
 In all colours



**NEW**

**FACTORY SHOP  
 SUPPLY ONLY**

For all your windows, doors, conservatories,  
 fascia, trims, guttering and sealants

**7-10 DAY TURN AROUND ON WINDOWS,  
 DOORS and CONSERVATORIES**

**TEL: 01579 343425**

**FAX: 01579 344500**

WEBSITE: [www.solartecwindows.co.uk](http://www.solartecwindows.co.uk)

EMAIL: [sales@solartecwindows.co.uk](mailto:sales@solartecwindows.co.uk)

**KEEPING JOBS IN CORNWALL**

*PJR Garden Services*

**Phil Rule**

All aspects of garden  
 work - grass / hedge  
 cutting, patios, fencing  
 etc.

**Mobile 07387 449004**



# Group Travel

Enterprise Park,  
Midway Road,  
Bodmin, Cornwall  
PL31 2FQ  
Tel: 01208 77989



## COACH EXCURSIONS & TOURS

- 28th SEP VISIT KENT (5 days & 4 nights)
- 14th NOV LONGLEAT FESTIVAL OF LIGHT
- 20th NOV TURKEY & TINSEL (4 days & 3 nights)
- 5th DEC BATH CHRISTMAS MARKET
- 12th DEC EXETER CHRISTMAS SHOPPER & MKT
- 20th DEC TOUR OF CORNISH CHRISTMAS LIGHTS
- 20th DEC OLYMPIA HORSE SHOW

## GARAGE



- SERVICES, REPAIRS & HEALTH CHECKS
- LIGHT / HEAVY COMMERCIAL INTERIM
- INSPECTIONS / MINISTRY STANDARD
- BRAKE LIGHT & EMISSION TESTS
- REPAIRS UNDERTAKEN

FOR BOOKINGS AND A BROCHURE PLEASE CALL

01208 77989 / 01208 72669

Website: [grouptourcoachhire.com](http://grouptourcoachhire.com) Email: [grouptourcornwall@btconnect.com](mailto:grouptourcornwall@btconnect.com)

## Martin Hoare – Local, Reliable, Competitive



WHEEL DIGGER FOR HIRE  
ALSO AVAILABE 'BREAKER'  
AND NEW CONCRETE  
'CRUSHER BUCKET'

ALL AT COMPETITIVE RATES

GROUND WORKS  
DRAINAGE  
NEW DRIVEWAYS  
SEPTIC TANKS &  
'SOAK AWAYS' INSTALLED



LASER LEVEL FOR HIRE  
QUOTES AVAILABLE



Phone 01579 363517

or

Mob 07863 291213



# INDEPENDENT FAMILY FUNERAL DIRECTORS

Supporting families to arrange funerals with sensitivity, dignity and care.

- Flexible, caring approach, tailor-making funerals to suit your needs and budget.
- Open and transparent, affordable pricing.
- Free bereavement support sessions, open to all in our community, first Wednesday of the month, 10am - 12pm.
- Prepayment Funeral Plans available

For details of our services and prices, visit our website.



**01579 362358 | [www.fdhallfunerals.co.uk](http://www.fdhallfunerals.co.uk)**



Avalennek, Caradon Town,  
Upton Cross, Liskeard  
Cornwall PL14 5AR  
Telephone 01579 363598  
Mobile 07901 538132  
[chrisrounsevell@tiscali.co.uk](mailto:chrisrounsevell@tiscali.co.uk)

## HOG ROAST EQUIPMENT HIRE AND MEAT SUPPLY

Hog Roasts For Those Special Occasions  
Self Catering or Hassle Free Service  
Everything done to your special requirements

**CHRIS ROUNSEVELL**  
TRADITIONAL BUTCHER

Come and visit our recently updated  
**Tile & Bathroom showroom** in PENSILVA

We offer a generous discount to all Pump Readers

Unit 24 Pensilva Ind Est, St Ive Road, Cornwall PL14 5RE 01579 362264



**CORNWALL TILE**  
CENTRE

Pensilva Showroom

Open Mon - Fri 8.30am - 5pm  
Saturday 9.00am - 1pm

Tiles & Mosaics for:

Bathrooms & Kitchens Living Areas Conservatories  
Patios & External Areas Wet Rooms & Spas Swimming Pools  
& All Commercial Applications

 atlas concorde

[www.cornwalltile.com](http://www.cornwalltile.com)

**OPEN FOR RETAIL, TRADE & COMMERCIAL ENQUIRIES**



*The*  
**RACEHORSE  
INN**



*Gastro Pub*

---

**Head Chef Phillip Bradshaw**

---



Ray and Flori welcome you to  
the Racehorse INN

A fine food experience in a convivial  
atmosphere

Our superb Sunday lunch is one to be tried

Open Every Day for Lunch and Dinner

[info@racehorseinn.co.uk](mailto:info@racehorseinn.co.uk)  
[www.racehorseinn.co.uk](http://www.racehorseinn.co.uk)

Take-out: Pizzas & Fish'n'Chips now available



**North Hill Village, Cornwall, PL15 7PG**

**01566 786 916**

## D.J.A. BUILDING SERVICES

ALL ASPECTS OF PROPERTY  
MAINTENANCE BUILDING &  
REFURBISHMENT

- \* Bespoke Furniture and Kitchens
- \* Wardrobes and Bookcases
- \* Garden Sheds, Poultry Houses & Small Animal Shelters
- \* Over 30 years' experience
- \* Fully insured
- \* References available
- \* Free estimates
- \* No VAT

**Call David on 01579  
364050 / 07767662635**

## **ADVERTISE HERE!**

This box for just **£7.50 per month** including VAT.

**10% discount** for a 12 month order. i.e. **£5.63 + VAT** per month for 12 mths

See the full tariff on page 3

**One thousand copies per month** distributed free of charge to households in the Parish of St Ive.

# Westwood Garden Maintenance



*Antony Watts*

*Grass Cutting, Clearance*

*Weeding, Turfing*

*Hedge Cutting*

*Patio Cleaning, Planting*

*Regular Visits / One-off Contracts*

*Residential & Commercial*

**FREE ESTIMATES**

01579 362019 [www.westwoodgm.co.uk](http://www.westwoodgm.co.uk) 07952 094472



THE HOME OF WOOD

## BULK DISCOUNTS AVAILABLE ON OUR 30 YEAR SERVICE LIFE POSTS



OUR GOLD TREATED STAKES AND POSTS ARE THE ONLY ONES AVAILABLE IN THE UK THAT ARE APPROVED BY THE WPA BENCHMARK FOR 30 YEAR SERVICE LIFE

For more information please contact one of our team



Bond Timber, Bake Sawmill, Trerulefoot, Saltash, Cornwall,

PL12 5BW

01503 240 308 [stacy@whbond.co.uk](mailto:stacy@whbond.co.uk)



# Pensilva Stores

**Amazing Value**

**Premier**  
a great deal more from your local store  
**Mon-Sat. 7:00 AM. – 9:30 PM.**  
**Sunday 8:00 AM. – 9:30 PM.**

- ✓ Fantastic Special Offers every month!!! (See store leaflets)
- ✓ Come and Check out our great deals on Wine, Beer and Spirits
- ✓ Local Produce: Homemade Butter and Clotted Cream, Meat from our local butcher
- ✓ Cornish Fresh Fruit and Vegetables
- ✓ Fresh Bread, Pasties and Cakes
- ✓ Take Away Coffee, tea and hot chocolate
- ✓ Newspapers and Magazines, Greeting Cards
- ✓ Paypoint, Lottery

**\* Free to use ATM \***  
**\* Card Payment \***

**Friendly Staff + Service with a Smile !!!**

**Pensilva Stores is a family run business who have been serving local people and visitors for more than 21 years.**

Higher Road, Pensilva, Liskeard, Cornwall PL14 5NQ

Tel: 01579 362547

## MENDOLOGY Garage Door Specialist

- Repairs
- Servicing
- Installations


Out of hours service  
call Dave anytime 07974 442645

**MENDOLOGY** COMMERCIAL DOORS LTD  
www.mendologydoors.co.uk

**01579 363760**

# PensilvaCars

01579 363516

- ✓ MOTs Class 4
- ✓ Service
- ✓ Repair
- ✓ Tyres
- ✓ FREE Courtesy Car
- ✓ Car & Van Sales
- ✓ Diagnostics
- ✓ Air Conditioning
- ✓ 

**We have offered a supply, fit & balance of tyre service for 10 years at competitive prices.**

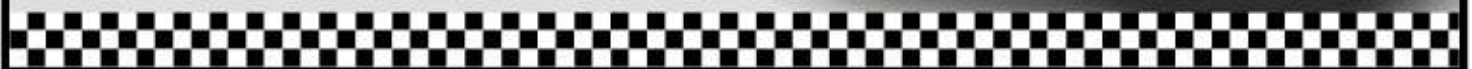
**Most of our tyres can be supplied the same day.**

**LOCAL RECOVERY £45.00**

**[www.pensilvacars.co.uk](http://www.pensilvacars.co.uk)**

**[pensilvacars@hotmail.co.uk](mailto:pensilvacars@hotmail.co.uk)**

We can service and repair your car to manufacturer specification, keeping your dealer warranty without main dealer expense.





# KEITH RICHARDS

## Motor Body Repair Specialists

A family run business with fully equipped & maintained workshops & a focus on  
Customer Care

- ◇ Motor Body Repair Specialist
- ◇ Mechanical Repairs
- ◇ Servicing to All Makes & Models
- ◇ Computer 4 Wheel Alignment
- ◇ 24 Hour Recovery Service
- ◇ Renovations & Re-sprays
- ◇ Member of RMI (Retail Motor Industry Federation)
- ◇ Latest Diagnostics (including specialists for VW, Audi, Seat,  
Skoda & Vauxhall)

With over 30 years' experience we aim to provide you with:- Value for Money -  
Friendly Service - Professional Approach - Expert Advice that you Can Trust  
(Visit our website for more details)

Pensilva Industrial Estate, St Ive Road, Pensilva, Liskeard, Cornwall PL14 5RE

Tel: 01579 362593

Email: [keith@keithrichardsmotorbody.co.uk](mailto:keith@keithrichardsmotorbody.co.uk)

Fax: 01579 363194

Website: [www.keithrichardsmotorbody.co.uk](http://www.keithrichardsmotorbody.co.uk)

Wm. Newham & Sons <sup>Est. 1835</sup>

Proprietor Robbie Savill AWCB

**CHIMNEY SWEEPS  
& BLACKSMITHS**



CHIMNEY SWEEPING

BIRD GUARDS, COWLS & POTS FITTED

CCTV INSPECTIONS & SURVEYS

STACK REPAIRS & REBUILDS

RIGID STEEL SYSTEMS ERECTED

STAINLESS STEEL and PUMPED CONCRETE  
CHIMNEY LINING

STOVES SUPPLIED, INSTALLED & REPAIRED

FIREPLACE ALTERATIONS & RENOVATIONS

FULL RANGE OF FIREPLACE FURNITURE  
made to order

**01579 347777**

need somewhere to stay ?  
between homes ?  
family/friends visiting ?

**Cutkive Wood**  
A colorful illustration of a holiday lodge with a sun, trees, and a house.  
**Holiday Lodges**

ideal for Pensilva  
& St.Ive

please call Jackie on  
01579 362216

# J. J. Child

Plumbing and heating engineer.

Oil appliance service, repair and breakdowns.

Over 30 years experience

Call John: 01579 362336 or 07837 921086

