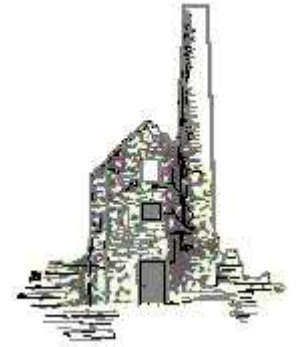


THE PARISH PUMP



May 2020
Edition 462



The Newsletter for the Parish of St Ives



From this edition, and until further notice, the Parish Pump will be online only. This is necessary due to the COVID 19 outbreak. Sorry for any inconvenience.

Disclaimer

The articles appearing in this magazine do not necessarily reflect the views of the Parish Council nor of the Parish Pump Editor.

Parish Councillors Telephone List

Peter Haines (chair)	01579 362459	Alan Moss (vice-chair)	01579 362064
James Bruce	07411 192645	Marlene Carr	01579 362919
Martin Corney	01579 382450	Angie Haines	01579 362459
Rosemary Farley	01579 384810	Tony Hodson	07973 536964
Nigel Libby	07968 891814	Kath Parkes	01579 362005
Ivor Vaughan	07979 934604	Craig Vaughnley	01579 364083
Samantha Reilly	via Parish Office	01579 363096	
Sharon Daw (Cornwall Councillor)	07837 379305 slash.dash.daw@gmail.com		

Meetings of St Ive Parish Council

Physical meetings are discontinued for the time being.

Councillors will use other methods of communication so that important decisions affecting our parish can be taken democratically and in good time.



Devon & Cornwall Police
Building safer communities together

 **101**

Minicom 18001 101

Police Community Neighbourhood Office

Your Community Support Officer is PCSO Steve Edser 30173.

email: CIOSNBMLiskeard@devonandcornwall.pnn.police.uk

To report a crime call 101 or go to www.devon-cornwall.police.uk

In an emergency call 999

Contact details for St. Ive Parish Council and for Millennium House

Address for correspondence: Millennium House, Century Square, Pensilva PL14 5NF

General Parish matters should be raised initially with the Parish Clerk, Jenny Hoskin, who will present them to the Parish Council.

Telephone: 01579 363096, email: stiveparish@btconnect.com

For accounts matters for the Parish and for Millennium House contact John Body, Finance Officer: 01579 362102, email: millenniumhouseadmin@btconnect.com

Millennium House enquiries and reservations: 01579 363096

email: millenniumhouse@btconnect.com.

On the web: Millennium House Website: www.cornwallvenue.com

Parish website: st-ive-parishcouncil.gov.uk Facebook: facebook.com/stiveparishcouncil

Parish Pump Information and Contact Details

To contact the editor please email: parishpump@btconnect.com

or phone the Parish office: **01579 363096**.

Hardcopy submissions by post or by hand to the Parish office, Millennium House.

Softcopy submissions: By email to the editor in MS Word, MS Publisher, pdf, Tiff or jpeg. Please use A4 pages and minimum 16 point font as the Pump is initially produced in A4 size and reduced to an A5 booklet at the printing stage. If in doubt please contact the editor.

Current Advertising Prices including VAT at 20%

Per issue: Quarter Page £7.50 Half Page £15.00 Full Page £25.00

10% discount for 12 months paid in advance.

Bargain Corner free ads by email to the editor or drop off at the Parish Office.

Deadline for the Parish Pump is STRICTLY 15th of every month

Due to the Coronavirus outbreak, Millennium

House is closed until further notice.

You can leave messages in our **letter box** at the front of the building or call our volunteer help line on **01579 363096**. We will reply to emails sent to the stiveparish@btconnect.com as soon as we can.

From the Editor

As far as I know, this is the first edition ever of the Parish Pump that will not be printed as a hardcopy. Usually we print 1000 copies of the A5 booklet for distribution around the Parish, but this month the Pump will be available only online. It will be interesting to see how that works out. On the plus side, everybody who reads it will read it in colour! On the minus side, some people who normally read it, will not see it at all. If you are reading this, please try to spread the word that it is available from the St Ive Parish Council website. I will do what I can to try to ensure that the message goes out on social media, but I'm not very active on social media, for example I don't do Twitter, so if you do, please share the link, or whatever.

My apologies also to those who did not receive their usual copy in April. Some of our usual distributors are self-isolating and could not do their rounds. Those of us that remained did our best, but we could not reach everybody.

Going into May, it looks like lockdown will continue for a while longer, maybe a long while longer. For some of us, who spend a lot of time at home anyway, routines have not changed very much, while for others among us, who usually spend a lot of their time away from their home, it feels very strange to be at home with the family all day every day. Perhaps those who find it hardest are those who are used to living alone at home, but who have suddenly been deprived of their regular activities outside of the home. The loneliness they were maybe feeling already has suddenly become even worse. We all know somebody like that and each of us must support where we can.

I wonder whether at the end of all this people will be talking about whether they had "a good pandemic" or a "difficult pandemic" like after WWII.

Keep well. Joe.

CHAIRMAN'S COLUMN

Well we are living through strange times at the moment. I hope you are all keeping well, and managing to make the most of the weather. I would like to take this opportunity to thank all the volunteers around the Parish that are doing their best to help those that are shielding themselves, through age or infirmity, also the village shop for organizing special shopping times for the elderly, and the Victoria Inn for delivering meals to those that can't get out. For those that don't know, Chris Rounsevell and the Farm shop are also making deliveries. While we are under lock down conditions there will be no normal Parish Council meetings, we are looking into virtual meetings, so watch this space for details. We are awaiting more details from Cornwall Council on how to conduct such meetings! Well that's it for this month, please stick to the instructions on social distancing and hand washing and we will get through this situation. Finally a big thank you to all those that work in the NHS, social care services and the emergency services for keeping us safe.

Pete Haines.

COLLECTION FOR PENSILVA STORES STAFF



THANK YOU

Pensilva resident Gareth Ford has started a collection on Facebook, to thank the staff of Pensilva Stores for the extra hours they've been putting in, and for continuing to work in the current difficult circumstances.

If you are not on Facebook and would like to donate, you can deliver your donation in a sealed envelope to one of the addresses below; please write "Pensilva Shop Staff Donation" on the envelope, and who the donation is from, so we can let them know who has said thank you. If you cannot get out, but live locally, call one of the mobile numbers below and we will arrange to collect it.
Gareth Ford: 27 Higher Glen Park, Pensilva. Mob. 07989 970899
Jude Kitt: 36 Amanda Way, Pensilva, Mob. 07900 086439

HELP FOR PEOPLE SELF-ISOLATING DUE TO CORONAVIRUS.

With the current Coronavirus outbreak, the Government requires certain groups of people to self-isolate at home.

St Ive Parish Council has set up a hub for anybody needing help during the Coronavirus outbreak and especially those who are self-isolating. The hub will be staffed by volunteers and can be accessed via the Millennium House reception number (01579) 363096.

If you are self-isolating, please let the volunteers at Millennium House know by calling (01579) 363096. The volunteers will do what they can to help you with shopping, prescriptions, etc., and will try to provide up to date information when needed. Just call (01579) 363096.

At the time of writing, the groups being asked to self-isolate include:

- People that have been in contact with anyone who has been confirmed to have the virus.
- People over 70 years old.
- People with 'underlying conditions'.
- Anybody who receives a letter from the NHS recommending self-isolation.

If you belong to any of these groups of people, you must follow the Government and NHS guidelines which are available online. If you cannot access the information you need, please ring the Millennium House volunteers on (01579) 363096 and they will try to help.

Any volunteers who would like to help, please call (01579) 363096. If you are already helping someone who is self-isolating, please call (01579) 363096, simply to let us know.

SAINT IVE PARISH COUNCIL

CORONAVIRUS

We at PENSILVA STORES are very concerned for some villagers that may have to “self-isolate” and the plight and vulnerability of the more mature villager that cannot get to the shop for their needs. We will endeavour to get a FREE DELIVERY system operating so that we can try to alleviate the situation. We will hopefully achieve this best by recruiting some volunteers that can help.

Any person that can help please leave their Name & Number at the counter. We are looking at different ways to assist customers.

START DATE TUES 24TH MARCH 2020

PENSILVA STORES will close to the general public for an hour on every Tuesday & Friday between 1PM -2PM. It would be an opportunity for the more mature customers to shop.

01579 362547

**PLEASE BE AWARE THAT THIS COULD
CHANGE AT VERY SHORT NOTICE & IS
SUBJECT TO GOVT DIRECTIVES.**

Recycling for Charity updates.

Every 6 months **SHARE** cash in points for items sent to **Terracycle**. Over the last 6 months we've raised **£1798** compared to the previous 6 months of £768 a whopping **£1000 increase** and that's **A LOT** of "rubbish" saved from going to waste and now helping **KICKS COUNT** charity.

When we can start collecting again changes will have to be enforced. I'm imagining mountains to sort and that CAN NOT happen. We don't want to touch your items any more than we have to, I think this is understandable. We need everyone to **sort your items into the programs** listed below. If it's not on the list, we don't accept it, so don't leave it.

To separate your items, ideally use bags you already have like bread bags, cereal bags etc. **Keep crisps packets flat**, never tie, knot, scrunch up, put inside the outer multipacks if possible.

If you have a large quantity of any program you'd like gone, contact me and we'll see if it's possible to arrange something. I know some of you must be bursting or chucking.

Pet care items, pouches must be clean and dry and bagged alone. Terracycle restrict the number of collectors for this program, and I have never been able to sign up, but have been teaming up with other Kicks Count collectors to send off shipments, unfortunately they have stopped now, **but** I have now teamed up with "**Clean our Patch**" based in Plymouth who are doing marvelous work not just litter picking but have been shopping and delivering food boxes to key workers and those in need across Plymouth, so a worthwhile group of volunteers I feel.

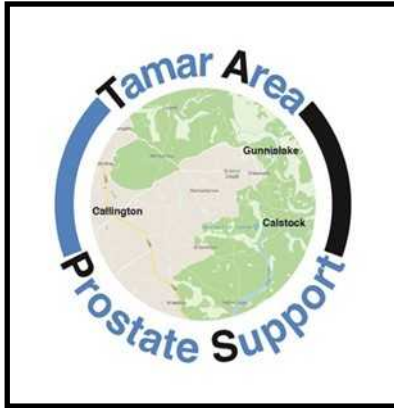
As always if you have any questions, suggestions, ideas, please let me know.



Here the list of programs

1. Empty Crisps & Snacks packets, all brands, all size bags. Quavers, Doritos, Wotsits...
2. Popcorn, pretzels, nuts, pork scratching packets, Bombay mix, any snacks that aren't a crisp
3. Pringles brand only, tubes can be flattened included plastic and foil lids
4. All sweets & chocolates, all brands, individual & multipacks, no foil, trays or paper/cardboard
5. Kinder products all packaging including the plastic egg
6. All biscuits, crackers & cakes wrappers. Mini Cheddars, Soreen, Ryvita, individual & multipks
7. Baby food pouches + lids & Ella's, Kiddilious, Goodies snacks wrappers
8. Used toothbrushes, electric heads & plastic packaging plus all brands, sizes of toothpaste tube + dental floss packaging
9. Triggers & hand pumps off bottles, all plastic in hair dye kits, roll on deodorants, disposable latex style gloves
10. Flexible packs from cleaning products, refill packs, wipes, stain remover, dishwasher tablets, salt, plastic air fresheners.
11. Soft tubes from lotions, gels, creams, ointments, plus lipsticks, gloss, lip balm, mascaras, eye shadow compacts
12. Clean, dry, bagged pet food pouches, plastic bags from biscuits & treats. All pets

Ali 07305 044049 Email SHARE@south-hill.co.uk
www.south-hill.co.uk/charity-recycling



As a result of COVID-19 our monthly meetings are postponed until further notice. We are still available to support anyone who needs us during this period and have members who have experience of various surgical procedures, radiotherapy, and hormone therapy. If you are recently diagnosed and just want to have a chat about your treatment or your options, don't hesitate to make contact.

TAPS membership is free and open to men and their partners. For more information on TAPS please contact Chris Greensted by phone on 01822 834797 or by email to tapsinfo555@gmail.com.

Other excellent sources of support are: -

Prostate Cancer UK (PCUK): 0800 074 8383

Tackle Prostate Cancer (UK): 0800 035 5302

The Chestnut Appeal: 01752 792736

(Derriford Hospital)

The Mustard Tree Centre: 01752 430060

(Macmillan Cancer Support)

Reverend Becca Bell has asked us to mention the St John's Church Facebook page where she will occasionally be uploading live videos and other content. You can find it here:

<https://www.facebook.com/St-Johns-Church-Pensilva-690472271346237>

These are strange times indeed but we've been feeling inspired by all the amazing community efforts that are happening around Cornwall (and the rest of the Earth!) as people work together to support their local communities. So, we decided to do our bit and have been busily sowing vegetable seeds for the residents of Pensilva!

Our hope is that those of you with unexpected extra time to spend in your gardens may fancy having a go at growing your own vegetables. Some of you are already doing it but may be struggling to get hold of plants. Either way we hope we can help.



Starting on May 2nd, we will be giving away vegetable plants at the entrance to the Community Woodland every Saturday between 10am and 12pm. We also have bundles of bean poles available from our coppice. There are even experienced gardeners available on the end of the phone to help out. All this for free!!

So, get your beds dug and ready and come along each Saturday to see what plants we have and get growing! It's such a great activity for all ages and will provide your family (and neighbours!) with fresh produce in the Summer and Autumn.

If you are self-isolating you can still give us a ring on the numbers below and we can sort out delivery of your plants to your door.

Pentiddy Community Woodland Main Gate, Saturday May 2nd

Then every Saturday 10am – 12pm.

For vegetable growing advice call: Ele 07421813976 or Chris 07792936413.



I am still putting up a weekly activity on the welcome boards in the Community Woodland so have a read if you come over this way for your daily exercise. When visiting the woods please remember to follow the government guidelines which we have printed and put next to the gates.

So enjoy the woods, enjoy your gardens and stay safe.

Ele Waters, Pentiddy Woods

Are you or your kids bored at home? Want something do? Well here's an idea!

Send us your pictures, plus a caption, or more words if there is a story behind them. Or send us your stories, with pictures if there's a picture that goes with it. The Parish Pump will publish some or all of them next time. There is no particular theme, just anything that you think would be suitable for, or interesting and/or helpful to other Parish Pump readers; something that will help others to pass a pleasant few moments during lockdown. Pictures can be photographs or original artwork.

This is not a competition, there are no prizes, it's just something that you might like to do!

You can send by email to parishpump@btconnect.com, or deliver by hand or post to Parish Pump Editor, Brook House , Lower Middle Hill, Pensilva, PL14 5QF.

Please try to keep your contributions quite short, so that they fit on a double page at the most!



The Saw-Horses of the Apocalypse

The 43rd St Ive Village Show

Saturday 5th September 2020

opens at 2.30pm in the village hall

Entries open to all

**Adult classes for Flower Arranging, Cookery, Vegetables,
Cut flowers, Houseplants, Handicrafts, Photography, and Art**

Young people's classes (up to 16yrs)

Entries to be submitted between 6.00 pm and 8.00pm on
Thursday 3rd September or in advance

Schedules available from the end of April

by email from Sally at sales@keasonplantservices.com

from Coffee Morning 10.30 to 12.00 on Wednesdays in the village hall

or from Jayne (382512) Veronica (382762) Katherine (382334)

St Ive and District Gardening Association

St Ive Village Show

Young Peoples Topics

Up to 7 years:

1. Lego or Duplo masterpiece
2. The biggest dock leaf
3. Colour the picture
4. 4 Chocolate crispies
5. A home made cat toy
6. A photo you have taken yourself.

8 to 16 years:

7. Lego masterpiece
8. An arrangement of leaves
9. Hand writing, text supplied
10. 4 Chocolate brownies
11. Picture or poster of a sunflower
12. A photo you have taken yourself

WANTED

OLD TOOLS - ANY TRADE AND WOODEN TOOL BOXES
OLD BICYCLES, PARTS & ACCESSORIES - OLDER THE BETTER
OLD TOYS AND GAMES PRE-1980
OBSOLETE CAR PARTS
OLD BOOKS, COMICS, MAGAZINES, PRE-DECIMAL.
CASH ON COLLECTION - 07492 866255

All Being Well

Your local, friendly gym.

Due to the COVID 19 outbreak we have been obliged to close until further notice. We are doing everything we can to ensure that we are ready to reopen as soon as it is safe to do so.

Term memberships will be carried over until we reopen.

If you have any questions please call Joe on 01579 364016 or email abwgym@gmail.com or visit our website www.abwgym.co.uk

Over 20 years working in our local community to improve health, fitness and well being.

Debbie Hicks - Counselling and Psychotherapy

Caring, confidential counselling for all.

I work in a therapeutic relationship to help you understand yourself better.

I offer a warm, approachable, relaxed environment for you to untangle your thoughts and emotions.

More info on my website or by contacting me.

www.debbiehickscounselling.co.uk

Email: debbiehicks10@gmail.com

07851 133782



Pensilva Post Office

Located through the Café on the 1st floor of Millennium House



Opening times during lockdown:

Tuesday - 9am to 1pm

Friday - 9am to 12 noon

We WILL BE OPEN on Friday May 8th, which is a Bank Holiday.

The travelling post office at St Ive Institute is open on Wednesdays, 10:30-12 noon.

Saint Ive Parish tree-planting survey

Please let us know about any trees that you plant within the Parish. We will include them in our own survey and we will notify the Forest for Cornwall on your behalf, if appropriate.

Contact us by phone: 01579 383967, or by email: parishpump@btconnect.com, or via the Saint Ive Parish Climate Action Group Facebook page. Pictures very welcome.

Trees planted in our Parish so far this year (that we know of):

At St Ive Recreation Ground: 30 Crab Apple, 15 Rowan, 15 Hazel, 15 Elder, 15 Dog Rose. Total 90.

Other St Ive: 2 Plum trees, plus 3 other trees, unspecified.

Pensilva: 1 Beech, 1 Dogwood, 4 Cherry, 6 Chestnut, 9 Crab Apple, 1 Liquidambar, 1 Oak.

Total 118.

What should our target be for the whole year?

Bargain Corner Free Ads up to £50

Ads are free for items up to £50. £5 charge for items over £50. Please ring the Parish Office on **01579 363096** or leave a note at Millennium House reception or email **parishpump@btconnect.com**.

*****Please let us know when your item has sold*****

Wheel & Tyre. New. Size 195/50 R15. **£50. 01579 383054.**

Canon IP2700 Printer. £20
Computer screen 19" £20.
Epson Perfection v350Scanner Photo £20
Sony Revia 42" TV. £45.
All in working order. **01579 363200**

Set of 3 **suitcases**, red, vgc, Antler, **£40**
ono. 07770 747353. Pensilva area

Car seat. Fisher Price FP2000 Safe Voyage seat used from birth. Good condition. Used about 5 times as extra seat at Nana's house. **£10.**
01579 383967 or 07933 960113 - St Ive

PANASONIC 32" LCD TV. Built-in Freeview. Hardly used. As New. Surplus to requirements. **£50.**
07891 849603

Toshiba sewing machine £30. New **pond liner 5m x 5m £30.** Five **Crittall windows 900mm x 1000mm approx.** Suitable for shed or greenhouse. **Free. 01579 363573**

Set of **Snow chains**, new and unused fit 14" to 19" rims, self adjusting. **£40**
Pensilva **01579 362207**

Approx. 2,200 **copper disc rivets for fibre cement roof slating. £10.**
5 Medium size **Kit Bags** in reasonably good condition (no cords). **£25** the five.
Set of 5 collectible **Meerkats.** VGC with certificates. **£30** the set of 5 or **£10** each.
2 large size lightweight camouflage military jackets **£5** each. **Tel 01579-384658**

2 x Medium Weight **Car Ramps £20.**
Push Mower £5. 01579 363199

Maximuscle home gym system £100 ono.
Black leather chaise longue. Excellent condition. **£100** ono.
Scelextric Sport Le Mans set. Still in box. Great condition. **£100.**
Plastering gear: 110v paddle mix with transformer, various trowels, hawk and other bits. Good for DIY etc. **£70** ono.
Easycamp Tour Ligata 6 berth tent. Used only 3 times. **£100** or offers.
Dark brown leather chair. £50
07980 380224 - Pensilva area.

Brown speckled **carpet**, 2m x 5m. Brand new (over ordered). **£50.**
Arch design headboards. £20 each or £35 pair. 01579 362211

PLEASE LET US KNOW WHEN YOUR ITEM HAS SOLD

ADVERTISING SECTION

Please support our advertisers!

Advertisers please note:

Due to restrictions in place as a result of the COVID19 outbreak, the Parish Pump is currently being published online only. For as long as this situation persists, we will continue to run the ads placed by our regular advertisers FREE OF CHARGE. For those of you that have paid in advance, the end date of your advertising run will be extended accordingly.

New and occasional advertisers, please call the editor on 01579 364016 to discuss. Many thanks.

TRADITIONAL STONE SERVICES

CLASSIC & TIMELESS STONE MASONRY AND LETTERING

MEMORIAL CLEANING

COMMISSIONS TAKEN

01579 363693 OR 07507 782282

Alford Joinery - For all your joinery needs

Specialists in bespoke doors, windows, staircases, conservatories, etc.

- 20 years experience
 - Large or small jobs
 - All joinery hand-crafted
 - Top quality FSC certified timbers
 - All joinery can be fitted if required.
- 01208 873444 or 07757 666460
info@alfordjoinery.com
www.alfordjoinery.com

PENSILVA VILLAGE HALL

Due to the Coronavirus outbreak all activities in the hall are cancelled until further notice.

Anyone wishing to book the hall for future meetings, birthday parties or fundraisers please contact Peter or Jackie Browning on **01579 363212** or email **peterpensilva@gmail.com**

Please note that as well as hall rent there is a coin meter for heating at 60p/hr.



MOBILE LIBRARY—Suspended

The mobile library and all Cornwall Council library services have been stood down with effect from March 23, 2020.

The information service continues at Luxstowe House, Liskeard.

Cornwall Library Members can access a

wealth of online reading- ebooks, Audiobooks, newspapers and magazines, comics and eGraphic novels. Details on the Cornwall Council website.

All subject to ongoing Government advice.



Struggling with Sight Loss?



iSight Cornwall offers practical help to people living with sight loss in Cornwall including:

Low Vision: Advice for low vision aids

Assistive Technology: Advice on products

Benefits Advice: Assistance to claim entitlements

Equipment Demonstration: Advice on gadgets

Social Clubs & Activities: Links to clubs & activities in the county

For more details Telephone 01872 261110 or visit

www.isightcornwall.org.uk

PENROSS

Rosecraddoc Lodge Holiday Bungalows
(Between Pensilva & Lisheard)

Ideal for family & friends coming to visit!



Refurbished in 2018. Sleeps 4. Electric, heating, bedding & towels inc in rent. Patio. Free wi-fi. Follow us on Facebook.

Sorry no pets or smoking.

Contact Julie Tucker on 01579 362221 or

email penhargetfarm@gmail.com

for 15% discount

NICOLA GREENE

BSc (hons) Podiatry MChs

HPC Registered Chiropodist/Podiatrist

**Home Visit Practice treating all
your foot care needs:**

- Nail Cutting
- Corns and Calluses
- Thickened Nails
- Dry Cracked Skin
- Verrucae
- Foot Pain
- Diabetic Foot Assessments
- Wound Care

T: 01579 590027

T: 01752 291565

M: 07786164205

E: nicki_greene@yahoo.com

JPH

plastering and Rendering

Internal plastering

Internal and external rendering

Internal and external painting and decorating

Property maintenance

Landscaping and land management

For estimates and no obligation quotes contact Justin on;

07539 296799 or @ JPH garden and home maintenance.

Debbie's Care Services Recruitment Agency

Tel. 0777 948 3230

Hello, my name is Debbie. I am a local lady who has been working in the community for over 30 years. I run a Care Recruitment Service placing fully trained carers into community care roles.

We provide the following services and more!

- Assisting bathing / showering
- Preparation of meals
- Cleaning / Shopping / Ironing
- Companionship / Friendship and emotional support
- Assisting with mobility
- Day, Evening and Night Care

DO YOU NEED A HELPING HAND?

Reliable, friendly,
experienced, mature
local resident offering
the following services:



Cleaning Ironing

Shopping Light Gardening Dog Walking

CRB/DBS checked and fully insured. Competitive rates.

Contact Jess: Telephone or text: 07934 764 327.



Email: homeangel77@yahoo.com. Find us on Facebook

Matt's Windows

**Repair of Windows, Doors
& Glass Unit Replacement**

T: 01579 641228

M: 07533 387368



PENSILVA GARDENER

**20 years experience in Garden
and Countryside skills.**

All garden work undertaken.

Call Chris on 01579 383047

or 07792 936413



KV Accounting Solutions

ACCA

Local Accountant offering fixed fee accounting services

With over 20 years experience, I am a fully qualified, friendly, local accountant

- | | |
|---|--|
| ✓ Annual Accounts for Sole Traders and Partnerships | ✓ Self Assessment tax returns |
| ✓ Book Keeping & Payroll | ✓ iXBRL tax filing |
| ✓ Personal Tax Planning | ✓ Tax investigation Fees Insurance |
| ✓ Company Accounts | ✓ Company Secretarial work |
| ✓ Business Support & Advice | ✓ Tax calculations for Sole Traders and Partnerships |

Kate Vaughnley FCCA - Chartered Certified Accountant

Website : www.kvaccountingsolutions.co.uk or Email : katevaughnley@gmail.com
Telephone : 01579 364083



**NATURAL GAS - LPG - OIL
BOILER INSTALLATION**

BOILER SERVICE & REPAIR

LONG WARRANTY FREE QUOTES

07859848288

bagasservices@outlook.com

533335

**GAS
safe
REGISTER**

KEEP IT TIDY

General Property Maintenance
including Decorating, plus Electrical

HONEST PRICE
for
QUALITY WORK.

No Job Too Small

Kit Rickard

18 Higher Glen Park
Pensilva

Phone: 01579 363378

Mobile: 07855 699071

Email: KITKeepItTidy@hotmail.com



FOR ALL YOUR CELEBRATION NEEDS

Visit our shop: 12 Fore Street, Callington

Call us on 01579 384386

Find us on Facebook or visit our website:

www.victoriaeyton.co.uk

- Helium Balloons - Balloon Arches -
- Bespoke Balloon Designs -
- Personalised Balloons - Partyware -
- Huge selection of greetings cards -
- **Weddings, Parties and Corporate events catered for.**

DOG GROOMING

40 YEARS EXPERIENCE



**SMALL and MEDIUM Dogs
Groomed to Your Request**

**LISKEARD AREA
Inquiries Welcome**

Call Patricia: 07517 658862

22 TO YOU OR TO ME



Domestic Electrical
Property Maintenance
Interior & Exterior Work
Carpentry :: Decking
Kitchens :: Bathrooms
Wall & Floor Tiling
General Plumbing

MCCARTHY PROPERTY MAINTENANCE

**Electrical Safety
Register** incorporating
ELECTRA  ECA
Certification Ltd

**HIGHLY REGARDED LOCAL BUILDER
COMPETITIVELY PRICED
COVERING THE SOUTH WEST**

Contact Dominic

07968 599 675

01579 362 945

info@mccarthypropertymaintenance.co.uk

www.mccarthypropertymaintenance.co.uk

Tom Marshall

TM Plastering

Plasterer and Property Care

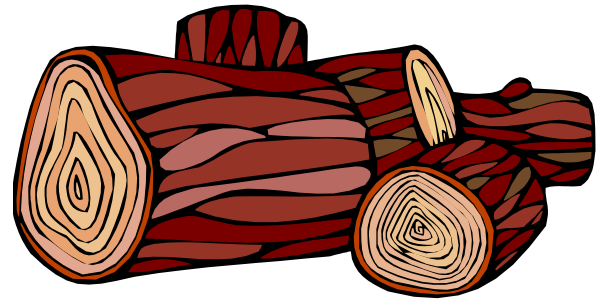
07544819284

Tommarshallcornwall@gmail.com

Free estimates

- Internal plastering
- Internal / external rendering
- Damp proofing
- Stud Walls
- Patio laying
- Chimney repairs
- Pointing
- Painting

SEASONED LOGS



MIXED LOAD

or

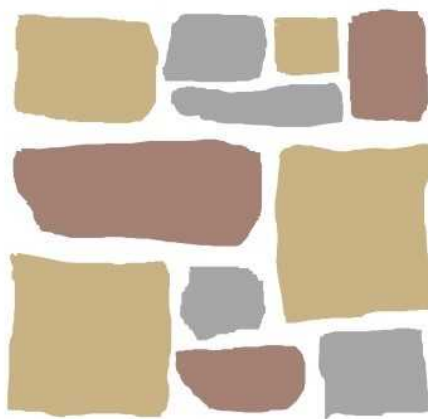
HARDWOOD

Tel. Jonathan

Mobile 07966 070725

or

01579 363157



JUST IN

STONE

Maintaining and preserving our countryside for the benefit of all

Dry Stone Walls

Cobblestoning

Stoned faced walls

Hedgelaying/steeping

Land management

All aspects of Landscaping

Mobile: 07539 296799

Email: just.in.stone@outlook.com



GENERAL GARDEN & HOUSE MAINTENANCE



NO JOB TOO SMALL

Call to discuss your requirements.
NO OBLIGATION quotes given.

One off jobs or regular work catered for.

Here are some examples...



OUTSIDE

MOWING

HEDGE CUTTING

FENCE PAINTING

BOARDER WEEDING

PATIOS & DRIVES

CLEANED



INSIDE

WINDOWS CLEANED
INSIDE & OUT.

PAINTING

CLEANING

SHOPPING

IRONING



CALL ANDREW CARLIN

now on:

07407 323888

Thank you.



Affordable Counselling

Caring, confidential,
non-judgemental

- Increased confidence and self esteem
- Help to cope better at difficult times
- Improved relationships
- Clarify confused thoughts & feelings
- Assertiveness
- Personal insight
- Improved emotional health
- Available for youth and adults

Isabelle McGarahan BA, PGCE
Dip in Therapeutic Counselling,
Accredited ACC, DBS cleared
www.im-counselling.org email:
isabelle@im-counselling.org
01579 344090/07857326229



P BRADLEY PLUMBING & HEATING

Email: info@pbplumbingheating.co.uk

Web: www.pbplumbingheating.co.uk

Facebook: @PBradleyPlumbingandHeating

NO JOB TOO BIG OR SMALL

24hr Emergency Call Out

Based in Liskeard

Call Today 07598956760

***"The complete bathroom
installation service"***

**New bathrooms fitted,
floor and wall tiling specialist**

General Plumbing including:

- Bathroom makeovers
- Dripping taps and burst pipes
- Pump and cylinder changes
- Radiator upgrades and additions
- Specialist in Leadwork
- No job too small
- No Call out charge



W. Hale
Plumbing

Friendly Service, Quality Work

NO VAT

**City and Guilds Qualified
established 1983**

Call William Hale on

Tel: 01579 362132 Mobile: 07826 699719



LPG Bottled Gas
 Patio, BBQ & Camping Gas
 Kiln Dried Firewood
 Coal & Smokeless Fuel
 Eco Heatlogs
 No Contracts
FREE DELIVERY



01208 816827

sales@loganslogs.com
 www.loganslogs.com



- Commercial Gases
- Welding & Cutting Gases
- Food & Drink Gases
- Balloon Gases



Heel 2 Toe Footcare

Tired Aching feet.

Corns, Hard skin, Verruca.

Fungal infected toe nails, or
 toe nails require cutting.

Diabetic feet also treated and
 regularly checked.

I can help to keep your feet
 looking and feeling good.

I am a trained Foot Health
 Practitioner to Diploma Level, fully
 insured & DBS checked.

I can do home visits via an
 appointment.

Call Penny: **07459 060709** for
 further information

MARK FITCH CHIMNEY SWEEP

- * BRUSH & VACUUM
- * CLEAN, RELIABLE SERVICE
- * COVERING ALL S.E. CORNWALL
- * DISCOUNT FOR MULTIPLE CHIMNEYS
- * COWLS & GUARDS FITTED
- * STOVES SERVICED



*Call
 Mark on:*

01579 350762
 07773 462643



QUALIFIED RAYNOR MASSAGE THERAPIST

RELAXING AND THERAPEUTIC MASSAGE TREATMENTS

Effective for many different types of chronic pain, sports injury, stress and tension related problems



CBD massage now available

APPOINTMENTS AVAILABLE AT

LISKEARD THERAPY CENTRE
LISKEARD PL14 3JB

THE WELLBEING CENTRE
LISKEARD PL14 6AT

Contact : Tina North

Phone : 07720 832322



Website : massage-therapy-cornwall.co.uk



R J Gardening & Handyman Services

All aspects of gardening and handyman work undertaken.

- ~Local and Trustworthy
- ~Hard Working
- ~Reliable and Experienced
- ~No job too small
- ~Competitive rates

Contact Raymond on:

07541 229064 or 01579 347622

raymond_pearcegb@yahoo.com

Find us on Facebook.



Fencing
 Paths & Steps
 Turf & Astro turf
 Driveways
 Retaining walls
 Digger work
 Footings & foundations

Patios
 Rendering
 Decking

And more

Free no obligation quotes

Call Rob on:

**07518246666 or
 01579 641802**

Window Cleaner
 Window Cleaner

Also any upvc cleaned

i.e. fascias, gutters, etc.

gutters cleared & unblocked

Please phone Rob

07709 053464

Window Cleaner
 Window Cleaner

Save Costly Energy!



**'A' Rated WINDOWS & DOORS
 at BEST PRICES EVER!**



Professionally fitted and finished by us with a
 10 year ins. guarantee.
 In all colours



NEW
**FACTORY SHOP
 SUPPLY ONLY**

For all your windows, doors, conservatories,
 fascia, trims, guttering and sealants

**7-10 DAY TURN AROUND ON WINDOWS,
 DOORS and CONSERVATORIES**

TEL: 01579 343425

FAX: 01579 344500

WEBSITE: www.solartecwindows.co.uk

EMAIL: sales@solartecwindows.co.uk

KEEPING JOBS IN CORNWALL



PJR Garden Services

Phil Rule

**All aspects of garden
 work - grass / hedge
 cutting, patios, fencing
 etc.**

Mobile 07387 449004



Group Travel

Enterprise Park, Midway Road,
Bodmin, Cornwall
PL31 2FQ
Tel: 01208 77989



COACH EXCURSIONS & TOURS

1st JULY	TREBAH GDNS & RIVER CRUISE
10th JULY	HAMPTON CT & KEW GDNS (2 days 1 night)
17th JULY	BROOMHILL GDNS & BARNSTAPLE MKT
8th AUG	TAUNTON FLOWER SHOW
9th AUG	GATCOMBE
29th AUG	GREAT DORSET STEAM FAIR (2 days 1 night)
4th SEP	BURGHLEY HORSE TRIALS (3 days 2 nights)
8th SEP	WIDECOMBE COUNTRY FAIR
18th SEP	BLenheim PALACE HORSE TRIALS
19th SEP	PLYMOUTH MAYFLOWER MUSTER
28th SEP	VISIT KENT (5 days & 4 nights)
7th NOV	Bridgwater Guy Fawkes Carnival
20th NOV	TURKEY & TINSEL (4 days & 3 nights)

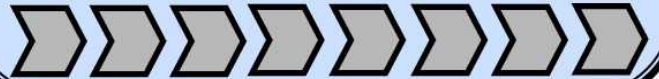
GARAGE

OPEN

MOT TESTING

CAR REPAIRS

COMMERCIAL REPAIRS



FOR BOOKINGS AND A BROCHURE PLEASE CALL
01208 77989 / 01208 72669

Website: grouptravelcoachhire.com Email: grouptravelcornwall@btconnect.com

Martin Hoare – Local, Reliable, Competitive



WHEEL DIGGER FOR HIRE
ALSO AVAILABE 'BREAKER'
AND NEW CONCRETE
'CRUSHER BUCKET'

ALL AT COMPETITIVE RATES

GROUND WORKS
DRAINAGE
NEW DRIVEWAYS
SEPTIC TANKS &
'SOAK AWAYS' INSTALLED



LASER LEVEL FOR HIRE
QUOTES AVAILABLE



Phone 01579 363517

or

Mob 07863 291213



INDEPENDENT FAMILY FUNERAL DIRECTORS

Supporting families to arrange funerals with sensitivity, dignity and care.

- Flexible, caring approach, tailor-making funerals to suit your needs and budget.
- Open and transparent, affordable pricing.
- Free bereavement support sessions, open to all in our community, first Wednesday of the month, 10am - 12pm.
- Prepayment Funeral Plans available

For details of our services and prices, visit our website.



01579 362358 | www.fdhallfunerals.co.uk



Avalennek, Caradon Town,
Upton Cross, Liskeard
Cornwall PL14 5AR
Telephone 01579 363598
Mobile 07901 538132
chrisrounsevell@tiscali.co.uk

HOG ROAST EQUIPMENT HIRE AND MEAT SUPPLY

Hog Roasts For Those Special Occasions
Self Catering or Hassle Free Service
Everything done to your special requirements

CHRIS ROUNSEVELL
TRADITIONAL BUTCHER

Come and visit our recently updated
Tile & Bathroom showroom in PENSILVA

We offer a generous discount to all Pump Readers

Unit 24 Pensilva Ind Est, St Ive Road, Cornwall PL14 5RE 01579 362264



CORNWALL TILE
CENTRE

Pensilva Showroom

Open Mon - Fri 8.30am - 5pm
Saturday 9.00am - 1pm

Tiles & Mosaics for:

Bathrooms & Kitchens Living Areas Conservatories
Patios & External Areas Wet Rooms & Spas Swimming Pools
& All Commercial Applications

 atlas concorde

www.cornwalltile.com

OPEN FOR RETAIL, TRADE & COMMERCIAL ENQUIRIES



The
**RACEHORSE
INN**



Gastro Pub

Head Chef Phillip Bradshaw

Ray and Flori welcome you to
the Racehorse INN

A fine food experience in a convivial
atmosphere

Our superb Sunday lunch is one to be tried

Open Every Day for Lunch and Dinner

info@racehorseinn.co.uk
www.racehorseinn.co.uk

Take-out: Pizzas & Fish'n'Chips now available



North Hill Village, Cornwall, PL15 7PG

01566 786 916

J. H. Simmons

Painting & Decorating



No Job Too Small

For more information
Please call John
01579 362688

7 East Park, Pensilva

D.J.A. BUILDING SERVICES

ALL ASPECTS OF PROPERTY
MAINTENANCE BUILDING &
REFURBISHMENT

- * Bespoke Furniture and Kitchens
- * Wardrobes and Bookcases
- * Garden Sheds, Poultry Houses & Small Animal Shelters
- * Over 30 years' experience
- * Fully insured
- * References available
- * Free estimates
- * No VAT

**Call David on 01579
364050 / 07767662635**

Westwood Garden Maintenance



Antony Watts

Grass Cutting, Clearance

Weeding, Turfing

Hedge Cutting

Patio Cleaning, Planting

Regular Visits / One-off Contracts

Residential & Commercial

FREE ESTIMATES

01579 362019 www.westwoodgm.co.uk 07952 094472



THE HOME OF WOOD

BULK DISCOUNTS AVAILABLE ON OUR 30 YEAR SERVICE LIFE POSTS



OUR GOLD TREATED STAKES AND POSTS ARE THE ONLY ONES AVAILABLE IN THE UK THAT ARE APPROVED BY THE WPA BENCHMARK FOR 30 YEAR SERVICE LIFE

For more information please contact one of our team



Bond Timber, Bake Sawmill, Trerulefoot, Saltash, Cornwall,

PL12 5BW

01503 240 308 stacy@whbond.co.uk

Pensilva Stores

Amazing Value

Premier
a great deal more from your local store
Mon-Sat. 7:00 AM. – 9:30 PM.
Sunday 8:00 AM. – 9:30 PM.

- ✓ Fantastic Special Offers every month!!! (See store leaflets)
- ✓ Come and Check out our great deals on Wine, Beer and Spirits
- ✓ Local Produce: Homemade Butter and Clotted Cream, Meat from our local butcher
- ✓ Cornish Fresh Fruit and Vegetables
- ✓ Fresh Bread, Pasties and Cakes
- ✓ Take Away Coffee, tea and hot chocolate
- ✓ Newspapers and Magazines, Greeting Cards
- ✓ Paypoint, Lottery

*** Free to use ATM ***
*** Card Payment ***

Friendly Staff + Service with a Smile !!!

Pensilva Stores is a family run business who have been serving local people and visitors for more than 21 years.

Higher Road, Pensilva, Liskeard, Cornwall PL14 5NQ

Tel: 01579 362547

MENDOLOGY Garage Door Specialist

- Repairs
- Servicing
- Installations


Out of hours service
call Dave anytime 07974 442645

MENDOLOGY COMMERCIAL DOORS LTD
www.mendologydoors.co.uk

01579 363760

PensilvaCars

01579 363516

- ✓ MOTs Class 4
- ✓ Service
- ✓ Repair
- ✓ Tyres
- ✓ FREE Courtesy Car
- ✓ Car & Van Sales
- ✓ Diagnostics
- ✓ Air Conditioning
- ✓ 

We have offered a supply, fit & balance of tyre service for 10 years at competitive prices.

Most of our tyres can be supplied the same day.

LOCAL RECOVERY £45.00

www.pensilvacars.co.uk

pensilvacars@hotmail.co.uk

We can service and repair your car to manufacturer specification, keeping your dealer warranty without main dealer expense.





KEITH RICHARDS

Motor Body Repair Specialists

A family run business with fully equipped & maintained workshops & a focus on
Customer Care

- ◇ Motor Body Repair Specialist
- ◇ Mechanical Repairs
- ◇ Servicing to All Makes & Models
- ◇ Computer 4 Wheel Alignment
- ◇ 24 Hour Recovery Service
- ◇ Renovations & Re-sprays
- ◇ Member of RMI (Retail Motor Industry Federation)
- ◇ Latest Diagnostics (including specialists for VW, Audi, Seat, Skoda & Vauxhall)

With over 30 years' experience we aim to provide you with:- Value for Money -
Friendly Service - Professional Approach - Expert Advice that you Can Trust

(Visit our website for more details)

Pensilva Industrial Estate, St Ive Road, Pensilva, Liskeard, Cornwall PL14 5RE

Tel: 01579 362593

Email: keith@keithrichardsmotorbody.co.uk

Fax: 01579 363194

Website: www.keithrichardsmotorbody.co.uk

Wm. Newham & Sons Est. 1835

Proprietor Robbie Savill AWCB

**CHIMNEY SWEEPS
& BLACKSMITHS**



CHIMNEY SWEEPING

BIRD GUARDS, COWLS & POTS FITTED

CCTV INSPECTIONS & SURVEYS

STACK REPAIRS & REBUILDS

RIGID STEEL SYSTEMS ERECTED

STAINLESS STEEL and PUMPED CONCRETE
CHIMNEY LINING

STOVES SUPPLIED, INSTALLED & REPAIRED

FIREPLACE ALTERATIONS & RENOVATIONS

FULL RANGE OF FIREPLACE FURNITURE
made to order

01579 347777

need somewhere to stay ?
between homes ?
family/friends visiting ?

Cutkive Wood

Holiday Lodges

ideal for Pensilva
& St.Ive

please call Jackie on
01579 362216

J. J. Child

Plumbing and heating engineer.

Oil appliance service, repair and breakdowns.

Over 30 years experience

Call John: 01579 362336 or 07837 921086

