

THE PARISH PUMP



April 2020
Edition 461



The Newsletter for the Parish of St Ives



The Hurlers standing stones at Minions have been complying with 'social distancing' guidelines for about five thousand years.

Photograph (and humour) courtesy of Martin Sellix

Disclaimer

The articles appearing in this magazine do not necessarily reflect the views of the Parish Council nor of the Parish Pump Editor.

Parish Councillors Telephone List

Peter Haines (chair)	01579 362459	Alan Moss (vice-chair)	01579 362064
James Bruce	07411 192645	Marlene Carr	01579 362919
Martin Corney	01579 382450	Angie Haines	01579 362459
Rosemary Farley	01579 384810	Tony Hodson	07973 536964
Nigel Libby	07968 891814	Kath Parkes	01579 362005
Ivor Vaughan	07979 934604	Craig Vaughnley	01579 364083
Samantha Reilly	via Parish Office	01579 363096	
Sharon Daw (Cornwall Councillor)	07837 379305 slash.dash.daw@gmail.com		

Meetings of St Ive Parish Council

Physical meetings are discontinued for the time being.

Councillors will use other methods of communication so that important decisions affecting our parish can be taken democratically and in good time.



Devon & Cornwall Police
Building safer communities together

 **101**

Minicom 18001 101

Police Community Neighbourhood Office

Your Community Support Officer is PCSO Steve Edser 30173.

email: CIOsnbmliskeard@devonandcornwall.pnn.police.uk

To report a crime call 101 or go to www.devon-cornwall.police.uk

In an emergency call 999

Contact details for St. Ive Parish Council and for Millennium House

Address for correspondence: Millennium House, Century Square, Pensilva PL14 5NF

General Parish matters should be raised initially with the Parish Clerk, Jenny Hoskin, who will present them to the Parish Council.

Telephone: 01579 363096, email: stiveparish@btconnect.com

For accounts matters for the Parish and for Millennium House contact John Body, Finance Officer: 01579 362102, email: millenniumhouseadmin@btconnect.com

Millennium House enquiries and reservations: 01579 363096

email: millenniumhouse@btconnect.com.

On the web: Millennium House Website: www.cornwallvenue.com

Parish website: st-ive-parishcouncil.gov.uk Facebook: facebook.com/stiveparishcouncil

Parish Pump Information and Contact Details

To contact the editor please email: parishpump@btconnect.com

or phone the Parish office: **01579 363096**.

Hardcopy submissions by post or by hand to the Parish office, Millennium House.

Softcopy submissions: By email to the editor in MS Word, MS Publisher, pdf, Tiff or jpeg. Please use A4 pages and minimum 16 point font as the Pump is initially produced in A4 size and reduced to an A5 booklet at the printing stage. If in doubt please contact the editor.

Current Advertising Prices including VAT at 20%

Per issue: Quarter Page £7.50 Half Page £15.00 Full Page £25.00

10% discount for 12 months paid in advance.

Bargain Corner free ads by email to the editor or drop off at the Parish Office.

Deadline for the Parish Pump is STRICTLY 15th of every month

Due to the Coronavirus outbreak, Millennium

House is closed until further notice.

You can leave messages in our **letter box** at the front of the building or call our volunteer help line on **01579 363096**. We will reply to emails sent to the stiveparish@btconnect.com as soon as we can.

From the Editor

When I started work on this month's edition I thought it would be the quickest and easiest yet because, I thought, everything was cancelled so there would be nothing to do. How wrong I was! What I failed to take into account was that, when things are changing fast, it's very hard to know what is really happening. As it is, I'm sure that this month's newsletter will be out of date before you even receive it, but I promise that I've done the very best I can. If in doubt, please check before going anywhere to make sure that whatever you intend to do can still be done. And let me know where I failed so I can correct it for next time.

I must say that I have been really impressed with how our community has responded to the Covid 19 emergency. The great majority of people have followed the Government advice and regulations to the letter, volunteers have appeared from everywhere ready to help those in greater need than themselves, and people in critical occupations have worked incredibly hard to keep us safe, and in some cases have gone back to work after retirement, often at considerable personal risk. And it has all been done out of a sense of duty and without any fuss. Well done everybody.

So please don't think that I'm being in any way cynical with the front and back cover pictures and captions. It doesn't hurt us to try to raise a smile at things, even when those things, as in this case, are as serious and frightening as you can get. I suppose I'm assuming that everybody who is having to grapple with the niceties of social distancing is finding it as weird as I have found it, but of course it has to be done; though part of me is hoping that we never really get used to it!

Anyway, this month, my usual sign-off is more relevant than ever!

Keep well. Joe.

**Due to the temporary unavailability of some of our distributors,
WE NEED VOLUNTEERS TO DISTRIBUTE THE PARISH PUMP
DURING THE CORONAVIRUS OUTBREAK.**

If you are able to help please call:

Sue and Shaun Hill on 01579 363631 or 07481 133343

Or email: parishpump@btconnect.com

Thanks!

CHAIRMAN'S COLUMN

Well here we are in April already. Hopefully the weather will be better, but our way of life is going to change for a while and I don't think anyone knows for how long. Most events around have now been cancelled, so it's time to think of other things to do that don't involve crowds.

Millennium House is now closed including the bar. However the Post Office will still be open with it's full range of services (on its normal days, keep watching this space!) Although Millennium House is closed for events/clubs etc., the staff, with the help of volunteers, are going to man the reception phone line (9 am to 6pm hopefully) to coordinate any requests for help. These will be passed to a wonderful team of volunteers that have come forward to help with shopping, collecting prescriptions etc. (See details elsewhere in the Pump).

Terry and Vicky at Pensilva Stores are also organising two time slots a week when the shop will be closed, surfaces cleaned and then opened for the more mature parishioners. (See notice elsewhere in the Pump).

I would ask everyone to check on their neighbours, to see they are OK, but please be sure to keep a 2 metre separation if you are delivering anything to them. I would also ask all those that are self isolating to be very careful of any unknown callers, and certainly do not give out any bank details / cards, however credible they may seem. (If in any doubt check with a friend).

Finally keep washing your hands, keep your distance from each other, and if you have a persistent dry cough or fever, call the NHS on 111 and follow their advice. I know its not a cheerful report this month but it was nice to see the community came together so quickly to form a band of volunteers to help out.

STAY SAFE AND KEEP YOUR SPIRITS UP. We will get through this. Pete Haines.

Status of events and services publicised in the Parish Pump

Open as usual (at the time of going to press)

Pensilva Post Office (See back cover)

Traveling Post Office at St Ive Institute (See back cover).

Pensilva Stores (see notice on page 8)

Pentiddy Community Woodland (see notice on page 9)

Advertised events now cancelled

Millennium House Table Top Sale (April 18th)

Lent Lunches

Caradon Orchard Group Blossom Fair (May 17th)

Facilities – closed until further notice

St Ive Village Hall and Millennium House except for Post Office as above

Pensilva Village Hall

The MEL BAR

MH Coffee shop

All Being Well gym

Wesley Online Centre

St Ive Church services & meetings

St Ive Chapel services & meetings

St John's services & meetings

Regular meetings, activities and services - Closed until further notice

Film Club (C-Fylm)

Sew Knit and Natter

St Ive Gardening Association meetings

Ruth And Colleen's Bingo

Pensilva Wednesday Club

Art Classes with Yvette

Walking Netball

Pensioners Lunches

Memory Café

Badminton (Millennium House)

Penmill Art Group

Pensilva Village Hall (all activities)

Pensilva Breathers

TAPS

Patient Participation Group meetings

Carers & Bereavement Group

WI Meetings (county and local)

Pensilva Antiques Fair

MIMS

Millennium House Events Group

East Cornwall Skittles

All Being Well Quizzes

Pensilva Country Dance Club

Slimming World meetings

Foodbank Collection Point at St John's

HELP FOR PEOPLE SELF-ISOLATING DUE TO CORONAVIRUS.

With the current Coronavirus outbreak, the Government requires certain groups of people to self-isolate at home.

St Ive Parish Council has set up a hub for anybody needing help during the Coronavirus outbreak and especially those who are self-isolating. The hub will be staffed by volunteers and can be accessed via the Millennium House reception number (01579) 363096.

If you are self-isolating, please let the volunteers at Millennium House know by calling (01579) 363096. The volunteers will do what they can to help you with shopping, prescriptions, etc., and will try to provide up to date information when needed. Just call (01579) 363096.

At the time of writing, the groups being asked to self-isolate include:

- People that have been in contact with anyone who has been confirmed to have the virus.
- People over 70 years old.
- People with 'underlying conditions'.
- Anybody who receives a letter from the NHS recommending self-isolation.

If you belong to any of these groups of people, you must follow the Government and NHS guidelines which are available online. If you cannot access the information you need, please ring the Millennium House volunteers on (01579) 363096 and they will try to help.

Any volunteers who would like to help, please call (01579) 363096. If you are already helping someone who is self-isolating, please call (01579) 363096, simply to let us know.

SAINT IVE PARISH COUNCIL

CORONAVIRUS

We at PENSILVA STORES are very concerned for some villagers that may have to “self-isolate” and the plight and vulnerability of the more mature villager that cannot get to the shop for their needs. We will endeavour to get a FREE DELIVERY system operating so that we can try to alleviate the situation. We will hopefully achieve this best by recruiting some volunteers that can help.

Any person that can help please leave their Name & Number at the counter. We are looking at different ways to assist customers.

START DATE TUES 24TH MARCH 2020

PENSILVA STORES will close to the general public for an hour on every Tuesday & Friday between 1PM -2PM. It would be an opportunity for the more mature customers to shop.

01579 362547

**PLEASE BE AWARE THAT THIS COULD
CHANGE AT VERY SHORT NOTICE & IS
SUBJECT TO GOVT DIRECTIVES.**



Spring has finally come! The woods will be remaining open for people to enjoy. Pentiddy is a great place to get some exercise whilst immersing yourself in all the goodness that nature provides at this magical time of year.

The folk from Pentiddy will be providing a weekly activity idea for families to do when they visit the woods during the next few months. There will be a notice board at the main entrance on which there will be printed instructions for an activity to help everyone (regardless of age!) to feel more connected to nature. Our plan is to change the activity before each weekend.

Anyone who has visited the Community Coppice over the last few months will have witnessed a large area of Sweet Chestnut being cut and brought into rotation to provide a local resource of timber in the years to come. This area has just been planted with bluebells and we hope that some of them will manage to flower this Spring.

So venture outdoors with a hot flask or even a picnic to have in the woods or at the roundhouse and soak up Spring!

Ele

A MESSAGE FROM THE MEMORY CAFÉ

In line with most other community interactions, for the health of the members of the Memory Café, there will be no meetings until further notice.

When this changes, we will contact all of our members individually, in the meantime we will endeavour to keep in touch by phone. If you wish to contact us please ring Pat (01579 363461) or Carolyn and Geoff (01579 362698).

A MESSAGE FROM ST IVE CHURCH

in common with all places of worship, St Ive Church is closed until further notice. We look forward to welcoming everyone back to Services, Lunches and Produce Market once this is all behind us. Difficult times.

A MESSAGE FROM KEITH MUTTON, ST IVE METHODIST CHAPEL

All Services and meetings are cancelled or postponed at St Ive Chapel until further notice. The Facebook page St Ive Methodist Church is keeping going and any updates will be found on there. In the meantime:

If you are internet-savvie, services can be found from all around the country, and the World for that matter, for us to join in. For those who don't do the internet, I am aiming to get a reading service out each week. Anyone who would like one, let me know on 01579 382334 and I'll get it to you.

Dear Lord in this time of real world crisis, remind us daily of your love for each and every one. Be with those who grieve, with those who worry, for those who work caring for others, for those who serve us and bring us the food to eat.

Hold this world in your loving arms. God bless. Amen

ST. IVE PARISH CLIMATE ACTION GROUP

Physical meetings are suspended for the time. being We will try to arrange a way to "meet" remotely in the near future. Meanwhile, if you would like to get involved please contact pwwiscombe@hotmail.com.

From the Reverend Becca Bell

Hello there,

How are you doing? It's weird isn't it? Everything feels weird. I dropped my younger two at school this morning (18th March) and the playground was half empty. I'm sure by the time you read this the schools will probably be closed.

I have to say I am torn about this idea of having to shut away during this outbreak. On the one hand I feel quite excited at finally getting on top of the mess in my bedroom, and I might even paint the rest of the dining room. I have a huge "to read" pile I could conquer and I can knit lots! That's in-between trying to support people down the phone; I don't intend this should be a holiday!!

The other half of me is worried. I have an asthmatic son and husband, a vulnerable sister, and plenty of church folk who I love dearly who are in the "at risk" category. I am worried I might end up doing some of their funerals. I worry about whether the country will hold it together, about whether food really will get to us, and what happens if hospitals really do become overwhelmed.

I know some are really upset that church is no longer gathering. I have to say that the way I relate to God means that I don't need to be in a building, or to celebrate eucharist. One of the reasons I don't bow to the sacrament or to the altar is that I strongly believe that if God really is everywhere, omnipresent, then we need to honour all places and people as if Christ were there. Because Christ is there. And this is the hope we can carry at this time. No matter how alone you feel, or how down you feel, or if you are actually quite enjoying the peace and quiet, Jesus is with you. Whether you feel it or not, he is there. And any of us can talk with him at any time, with any words. During this weird season I want to offer hope. That despite the challenges and the anxieties we all have, that we would draw near to Jesus, and discover his presence in a way that we've not known before, in a way that might have been drowned out by the world before. If you want anything to help you pray, please give me a call. I can drop a service sheet round to you, or pray with you on the phone.

I have stacks of fab books, so if you fancy a read, give me a call and I'll drop one on your doorstep. There are also loads of great online resources if you have the facilities.

If you are unsure how to get food, medicine, books, DVD's, crosswords... call me. I shall try to help (with the support of the wonderful church family). Don't go without or worry alone.

Be good. Follow the advice given. Make sure you are phoning friends and neighbours. Keep a routine. Pray often. Give thanks for all the good things in your life. And in all things, praise God who is our maker and redeemer.

Pensilva WI March report

The myths and truths about the Pilgrim Fathers' sailing on the Mayflower to their new home in 1620 were explained to the members of Pensilva WI when Mike Harwood (a very accomplished artist as well as historian) came to give us a talk. He enlightened the ladies regarding the many stories about this event, some of which were eye-opening. We all knew a lot more about what happened in the 1600's by the end of the evening. President Jean Hoare thanked Mike for his very interesting and informative talk.

Members were told of forthcoming events including a visit to Lukeland Garden, our Birthday dinner, an evening walk around Liskeard and a visit to Sterts to see Guys & Dolls.

Eileen Adgo, Elaine Burden, Violet Ann Gold, Jenny Rendle, Mary Yates, Jill Pascoe, Pauline Millar, Sheila Wherly and Denise Morgan all had birthdays this month. Happy Birthday ladies.

Competitions: Flower of the month 1st Mary Yates, 2nd Jean Cole, 3rd Alison Willis. Boat related item: 1st Alison Willis, 2nd Frances Tucker, 3rd Cherry Woodhouse.

St Ive and District Gardening Association

At our March meeting Iain Rowe, from Kresen Kernow, gave us a brief history of the Caradon mines. Iain has extensive knowledge of the area having spent several years working on the Caradon Hill Area Heritage Project. The background of the mining in the early eighteen-hundreds, with the railway line built to Looe for the export of ores and import of coal, showed a very different side to the countryside and port that we see now. At our AGM preceding the talk the current committee were re-elected *en bloc*.

Due to the Coronavirus outbreak, we have had to cancel the planned outings in May and June and also the Plant Sale in May.

Supporting Guiding & Scouting Activities in Pensilva 200 CLUB Draw Results for January 2020

1st No. 10 Mrs F Tucker	2nd No. 181 Mr G Weston	3rd No. 52 Mr K Richards
------------------------------------	------------------------------------	-------------------------------------

Thank you for your support

St Ive Parish Climate Action Group, Tree-planting event at St Ive Recreation Ground on Saturday March 21st

Nine enthusiastic volunteers assembled in the far corner of the recreation ground on a chilly morning. In no time at all we had planted 30 Crab Apple, 15 Rowan, 15 Hazel, 15 Elder shrubs and 15 Dog Rose shrubs; 90 trees in total. It felt strange having to keep two metres apart for the duration, but it all worked out well and we can all now look forward to seeing the trees and shrubs mature in the coming months and years.

Missing from the photographs is James Bruce, who was behind the camera.



Saint Ive Parish tree-planting survey

Please let us know about any trees that you plant within the Parish. We will include them in our own survey and we will notify the Forest for Cornwall on your behalf, if appropriate.

Contact us by phone: 01579 383967, or by email:

parishpump@btconnect.com, or via the Saint Ive Parish Climate Action Group Facebook page. Pictures very welcome.

The 43rd St Ive Village Show

Saturday 5th September 2020

opens at 2.30pm in the village hall

Entries open to all

**Adult classes for Flower Arranging, Cookery, Vegetables,
Cut flowers, Houseplants, Handicrafts, Photography, and Art**

Young people's classes (up to 16yrs)

Entries to be submitted between 6.00 pm and 8.00pm on
Thursday 3rd September or in advance

Schedules available from the end of April

by email from Sally at sales@keasonplantservices.com

from Coffee Morning 10.30 to 12.00 on Wednesdays in the village hall

or from Jayne (382512) Veronica (382762) Katherine (382334)

St Ive and District Gardening Association

St Ive Village Show

Young Peoples Topics

Up to 7 years:

1. Lego or Duplo masterpiece
2. The biggest dock leaf
3. Colour the picture
4. 4 Chocolate crispies
5. A home made cat toy
6. A photo you have taken yourself.

8 to 16 years:

7. Lego masterpiece
8. An arrangement of leaves
9. Hand writing, text supplied
10. 4 Chocolate brownies
11. Picture or poster of a sunflower
12. A photo you have taken yourself

WANTED

OLD TOOLS - ANY TRADE AND WOODEN TOOL BOXES
OLD BICYCLES, PARTS & ACCESSORIES - OLDER THE BETTER
OLD TOYS AND GAMES PRE-1980
OBSOLETE CAR PARTS
OLD BOOKS, COMICS, MAGAZINES, PRE-DECIMAL.
CASH ON COLLECTION - 07492 866255

All Being Well

Your local, friendly gym.

Due to the COVID 19 outbreak we have been obliged to close until further notice. We are doing everything we can to ensure that we are ready to reopen as soon as it is safe to do so.

Term memberships will be carried over until we reopen.

If you have any questions please call Joe on 01579 364016 or email abwgym@gmail.com or visit our website www.abwgym.co.uk

Over 20 years working in our local community to improve health, fitness and well being.

Debbie Hicks - Counselling and Psychotherapy

Caring, confidential counselling for all.

I work in a therapeutic relationship to help you understand yourself better.

I offer a warm, approachable, relaxed environment for you to untangle your thoughts and emotions.

More info on my website or by contacting me.

www.debbiehickscounselling.co.uk

Email: debbiehicks10@gmail.com

07851 133782



PENSILVA VILLAGE HALL

Due to the Coronavirus outbreak all activities in the hall are cancelled until further notice.

Anyone wishing to book the hall for future meetings, birthday parties or fundraisers please contact Peter or Jackie Browning on **01579 363212** or email **peterpensilva@gmail.com**

Please note that as well as hall rent there is a coin meter for heating at 60p/hr.



SUPPORTING

**PROSTATE
CANCER UK**

April meeting cancelled due to Covid 19 outbreak. More news next month.

TAPS membership is free and open to men and their partners. For more information on TAPS please contact Chris Greensted by phone on 01822 834797 or by email to tapsinfo555@gmail.com.

TRADITIONAL STONE SERVICES

CLASSIC & TIMELESS STONE MASONRY AND LETTERING

MEMORIAL CLEANING

COMMISSIONS TAKEN

01579 363693 OR 07507 782282

Debbie's Care Services Recruitment Agency

Tel. 0777 948 3230

Hello, my name is Debbie. I am a local lady who has been working in the community for over 30 years. I run a Care Recruitment Service placing fully trained carers into community care roles.

We provide the following services and more!

- Assisting bathing / showering
- Preparation of meals
- Cleaning / Shopping / Ironing
- Companionship / Friendship and emotional support
- Assisting with mobility
- Day, Evening and Night Care

DO YOU NEED A HELPING HAND?

Reliable, friendly,
experienced, mature
local resident offering
the following services:



Cleaning Ironing

Shopping Light Gardening Dog Walking

CRB/DBS checked and fully insured. Competitive rates.

Contact Jess: Telephone or text: 07934 764 327.



Email: homeangel77@yahoo.com. Find us on Facebook

Alford Joinery - For all your joinery needs

Specialists in bespoke doors, windows, staircases, conservatories, etc.

- 20 years experience
 - Large or small jobs
 - All joinery hand-crafted
 - Top quality FSC certified timbers
 - All joinery can be fitted if required.
- 01208 873444 or 07757 666460
info@alfordjoinery.com
www.alfordjoinery.com

MOBILE LIBRARY—Suspended



The mobile library and all Cornwall Council library services have been stood down with effect from March 23, 2020.

The information service continues at Luxstowe House, Liskeard.

Cornwall Library Members can access a wealth of online reading- ebooks,

Audiobooks, newspapers and magazines, comics and eGraphic novels. Details on the Cornwall Council website.

All subject to ongoing Government advice.



Struggling with Sight Loss?

iSight Cornwall offers practical help to people living with sight loss in Cornwall including:

Low Vision: Advice for low vision aids

Assistive Technology: Advice on products

Benefits Advice: Assistance to claim entitlements

Equipment Demonstration: Advice on gadgets

Social Clubs & Activities: Links to clubs & activities in the county

For more details Telephone 01872 261110 or visit

www.isightcornwall.org.uk

PENROSS

Rosecraddoc Lodge Holiday Bungalows
(Between Pensilva & Lisheard)

Ideal for family & friends coming to visit!



Refurbished in 2018. Sleeps 4. Electric, heating, bedding & towels inc in rent. Patio. Free wi-fi. Follow us on Facebook.

Sorry no pets or smoking.

Contact Julie Tucker on 01579 362221 or

email penhargetfarm@gmail.com

for 15% discount

NICOLA GREENE

BSc (hons) Podiatry MChs

HPC Registered Chiropodist/Podiatrist

**Home Visit Practice treating all
your foot care needs:**

- Nail Cutting
- Corns and Calluses
- Thickened Nails
- Dry Cracked Skin
- Verrucae
- Foot Pain
- Diabetic Foot Assessments
- Wound Care

T: 01579 590027

T: 01752 291565

M: 07786164205

E: nicki_greene@yahoo.com

JPH

plastering and Rendering

Internal plastering

Internal and external rendering

Internal and external painting and decorating

Property maintenance

Landscaping and land management

For estimates and no obligation quotes contact Justin on;

07539 296799 or @ JPH garden and home maintenance.

Matt's Windows

**Repair of Windows, Doors
& Glass Unit Replacement**

T: 01579 641228

M: 07533 387368



PENSILVA GARDENER

**20 years experience in Garden
and Countryside skills.**

All garden work undertaken.

Call Chris on 01579 383047

or 07792 936413



KV Accounting Solutions

ACCA

Local Accountant offering fixed fee accounting services

With over 20 years experience, I am a fully qualified, friendly, local accountant

- ✓ Annual Accounts for Sole Traders and Partnerships
- ✓ Book Keeping & Payroll
- ✓ Personal Tax Planning
- ✓ Company Accounts
- ✓ Business Support & Advice

- ✓ Self Assessment tax returns
- ✓ iXBRL tax filing
- ✓ Tax investigation Fees Insurance
- ✓ Company Secretarial work
- ✓ Tax calculations for Sole Traders and Partnerships

Kate Vaughnley FCCA - Chartered Certified Accountant
Website : www.kvaccountingsolutions.co.uk or Email : katevaughnley@gmail.com
Telephone : 01579 364083



**NATURAL GAS - LPG - OIL
BOILER INSTALLATION**

BOILER SERVICE & REPAIR

LONG WARRANTY FREE QUOTES

07859848288

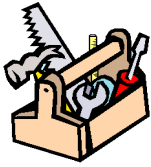
bagasservices@outlook.com

533335

**GAS
safe
REGISTER**

KEEP IT TIDY

General Property Maintenance
including Decorating, plus Electrical



HONEST PRICE
for
QUALITY WORK.



No Job Too Small

Kit Rickard

18 Higher Glen Park
Pensilva

Phone: 01579 363378

Mobile: 07855 699071

Email: KITKeepItTidy@hotmail.com



FOR ALL YOUR CELEBRATION NEEDS

Visit our shop: 12 Fore Street, Callington

Call us on 01579 384386

Find us on Facebook or visit our website:

www.victoriaeyton.co.uk

- Helium Balloons - Balloon Arches -
- Bespoke Balloon Designs -
- Personalised Balloons - Partyware -
- Huge selection of greetings cards -
- **Weddings, Parties and Corporate events catered for.**

DOG GROOMING

40 YEARS EXPERIENCE



SMALL and MEDIUM Dogs
Groomed to Your Request

LISKEARD AREA
Inquiries Welcome

Call Patricia: 07517 658862

22 TO YOU OR TO ME



Domestic Electrical
Property Maintenance
Interior & Exterior Work
Carpentry :: Decking
Kitchens :: Bathrooms
Wall & Floor Tiling
General Plumbing

MCCARTHY PROPERTY MAINTENANCE

Electrical Safety Register
incorporating
ELECTSA  ECA
Certification Ltd

HIGHLY REGARDED LOCAL BUILDER
COMPETITIVELY PRICED
COVERING THE SOUTH WEST

Contact Dominic

07968 599 675

01579 362 945

info@mccarthypropertymaintenance.co.uk

www.mccarthypropertymaintenance.co.uk

Tom Marshall

TM Plastering

Plasterer and Property Care

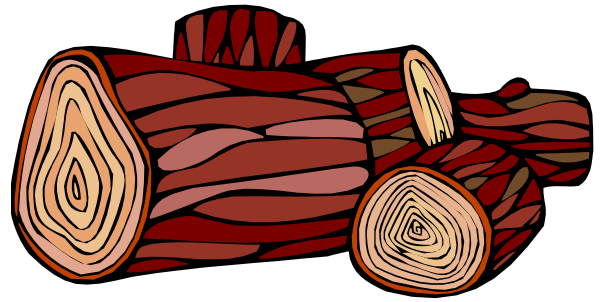
07544819284

Tommarshallcornwall@gmail.com

Free estimates

- Internal plastering
- Internal / external rendering
- Damp proofing
- Stud Walls
- Patio laying
- Chimney repairs
- Pointing
- Painting

SEASONED LOGS



MIXED LOAD

or

HARDWOOD

Tel. Jonathan

Mobile 07966 070725

or

01579 363157



Maintaining and preserving our countryside for the benefit of all

Dry Stone Walls

Cobblestoning

Stoned faced walls

Hedgelaying/steeping

Land management

All aspects of Landscaping

Mobile: 07539 296799

Email: just.in.stone@outlook.com



GENERAL GARDEN & HOUSE MAINTENANCE

NO JOB TOO SMALL

Call to discuss your requirements.
NO OBLIGATION quotes given.

One off jobs or regular work catered for.

Here are some examples...

OUTSIDE

MOWING

HEDGE CUTTING

FENCE PAINTING

BOARDER WEEDING

PATIOS & DRIVES

CLEANED

INSIDE

WINDOWS CLEANED
INSIDE & OUT.

PAINTING

CLEANING

SHOPPING

IRONING

CALL ANDREW CARLIN

now on:

07407 323888

Thank you.



Affordable Counselling

Caring, confidential,
non-judgemental

- Increased confidence and self esteem
- Help to cope better at difficult times
- Improved relationships
- Clarify confused thoughts & feelings
- Assertiveness
- Personal insight
- Improved emotional health
- Available for youth and adults

Isabelle McGarahan BA, PGCE
Dip in Therapeutic Counselling,
Accredited ACC, DBS cleared
www.im-counselling.org email:
isabelle@im-counselling.org
01579 344090/07857326229



P BRADLEY PLUMBING & HEATING

Email: info@pbplumbingheating.co.uk

Web: www.pbplumbingheating.co.uk

Facebook: @PBradleyPlumbingandHeating

NO JOB TOO BIG OR SMALL

24hr Emergency Call Out

Based in Liskeard

Call Today 07598956760

***"The complete bathroom
installation service"***

**New bathrooms fitted,
floor and wall tiling specialist**

General Plumbing including:

- Bathroom makeovers
- Dripping taps and burst pipes
- Pump and cylinder changes
- Radiator upgrades and additions
- Specialist in Leadwork
- No job too small
- No Call out charge



W. Hale
Plumbing

Friendly Service, Quality Work

NO VAT

**City and Guilds Qualified
established 1983**

Call William Hale on

Tel: 01579 362132 Mobile: 07826 699719



LPG Bottled Gas
 Patio, BBQ & Camping Gas
 Kiln Dried Firewood
 Coal & Smokeless Fuel
 Eco Heatlogs
 No Contracts
FREE DELIVERY



01208 816827

sales@loganslogs.com
 www.loganslogs.com



- Commercial Gases
- Welding & Cutting Gases
- Food & Drink Gases
- Balloon Gases



Heel 2 Toe Footcare

Tired Aching feet.

Corns, Hard skin, Verruca.

Fungal infected toe nails, or
 toe nails require cutting.

Diabetic feet also treated and
 regularly checked.

I can help to keep your feet
 looking and feeling good.

I am a trained Foot Health
 Practitioner to Diploma Level, fully
 insured & DBS checked.

I can do home visits via an
 appointment.

Call Penny: **07459 060709** for
 further information

MARK FITCH CHIMNEY SWEEP

- * BRUSH & VACUUM
- * CLEAN, RELIABLE SERVICE
- * COVERING ALL S.E. CORNWALL
- * DISCOUNT FOR MULTIPLE CHIMNEYS
- * COWLS & GUARDS FITTED
- * STOVES SERVICED



*Call
 Mark on:*

01579 350762
 07773 462643



QUALIFIED RAYNOR MASSAGE THERAPIST

RELAXING AND THERAPEUTIC MASSAGE TREATMENTS

Effective for many different types of chronic pain, sports injury, stress and tension related problems



CBD massage now available

APPOINTMENTS AVAILABLE AT

LISKEARD THERAPY CENTRE
LISKEARD PL14 3JB

THE WELLBEING CENTRE
LISKEARD PL14 6AT

Contact : Tina North

Phone : 07720 832322



Website : massage-therapy-cornwall.co.uk



R J Gardening & Handyman Services

All aspects of gardening and handyman work undertaken.

- ~Local and Trustworthy
- ~Hard Working
- ~Reliable and Experienced
- ~No job too small
- ~Competitive rates

Contact Raymond on:

07541 229064 or 01579 347622

raymond_pearcegb@yahoo.com

Find us on Facebook.



Fencing
 Paths & Steps
 Turf & Astro turf
 Driveways
 Retaining walls
 Digger work
 Footings & foundations

Patios
 Rendering
 Decking

And more

Free no obligation quotes

Call Rob on:

**07518246666 or
 01579 641802**

Window Cleaner
Window Cleaner

Also any upvc cleaned

i.e. fascias, gutters, etc.

gutters cleared & unblocked

Please phone Rob

07709 053464

Window Cleaner
Window Cleaner

Save Costly Energy!



SOLARTEC

Windows &
 Conservatories Ltd

**'A' Rated WINDOWS & DOORS
 at BEST PRICES EVER!**



Professionally fitted and finished by us with a
 10 year ins. guarantee.
 In all colours



NEW

**FACTORY SHOP
 SUPPLY ONLY**

For all your windows, doors, conservatories,
 fascia, trims, guttering and sealants

**7-10 DAY TURN AROUND ON WINDOWS,
 DOORS and CONSERVATORIES**

TEL: 01579 343425

FAX: 01579 344500

WEBSITE: www.solartecwindows.co.uk

EMAIL: sales@solartecwindows.co.uk

KEEPING JOBS IN CORNWALL

PJR Garden Services

Phil Rule

All aspects of garden
 work - grass / hedge
 cutting, patios, fencing
 etc.

Mobile 07387 449004

Group Travel

Enterprise Park, Midway Road,
Bodmin, Cornwall
PL31 2FQ
Tel: 01208 77989



BODMIN M.O.T. CENTRE at Group Travel

Class 4, 5 and 7. Trade enquiries available upon request. Tel: 01208 77989

COACH EXCURSIONS & TOURS

3rd APR	KENTS CAVERN & STEAM TRAIN	1st JULY	TREBAH GDNS & RIVER CRUISE
10th APR	CHER TRIBUTE, EXMOUTH	10th JULY	HAMPTON CT & KEW GDNS (2 days 1 night)
17th APR	EXETER RACES & '80 MUSIC NIGHT	17th JULY	BROOMHILL GDNS & BARNSTAPLE MKT
20th APR	EDINBURGH & DURHAM TOUR (7 days & 6 nights)	8th AUG	TAUNTON FLOWER SHOW
26th APR	PAR MARKET	9th AUG	GATCOMBE
2nd MAY	TOBY'S GARDEN FESTIVAL	29th AUG	GREAT DORSET STEAM FAIR (2 days 1 night)
9th MAY	BADMINTON HORSE TRIALS	4th SEP	BURGHLEY HORSE TRIALS (3 days 2 nights)
28th MAY	EXMOUTH-TORQUAY/BRIXHAM CRUISE	8th SEP	WIDECOMBE COUNTRY FAIR
3rd JUNE	AGATHA CHRISTIE'S GREENWAY HSE	18th SEP	BLenheim PALACE HORSE TRIALS
13th JUNE	FALMOUTH INT SEA SHANTY & REGATTA	19th SEP	PLYMOUTH MAYFLOWER MUSTER
20th JUNE	CORNWALL @ WAR & RAF MUSEUM	28th SEP	VISIT KENT (5 days & 4 nights)

FOR BOOKINGS AND A BROCHURE PLEASE CALL
01208 77989 / 01208 72669

Website: grouptravelcoachhire.com Email: grouptravelcomwall@btconnect.com

Martin Hoare – Local, Reliable, Competitive



WHEEL DIGGER FOR HIRE
ALSO AVAILABE 'BREAKER'
AND NEW CONCRETE
'CRUSHER BUCKET'

ALL AT COMPETITIVE RATES

GROUND WORKS
DRAINAGE
NEW DRIVEWAYS
SEPTIC TANKS &
'SOAK AWAYS' INSTALLED



LASER LEVEL FOR HIRE
QUOTES AVAILABLE



Phone 01579 363517

or

Mob 07863 291213



INDEPENDENT FAMILY FUNERAL DIRECTORS

Supporting families to arrange funerals with sensitivity, dignity and care.

- Flexible, caring approach, tailor-making funerals to suit your needs and budget.
- Open and transparent, affordable pricing.
- Free bereavement support sessions, open to all in our community, first Wednesday of the month, 10am - 12pm.
- Prepayment Funeral Plans available

For details of our services and prices, visit our website.



01579 362358 | www.fdhallfunerals.co.uk



Avalennek, Caradon Town,
Upton Cross, Liskeard
Cornwall PL14 5AR
Telephone 01579 363598
Mobile 07901 538132
chrisrounsevell@tiscali.co.uk

HOG ROAST EQUIPMENT HIRE AND MEAT SUPPLY

Hog Roasts For Those Special Occasions
Self Catering or Hassle Free Service
Everything done to your special requirements

CHRIS ROUNSEVELL
TRADITIONAL BUTCHER

Come and visit our recently updated
Tile & Bathroom showroom in PENSILVA

We offer a generous discount to all Pump Readers

Unit 24 Pensilva Ind Est, St Ive Road, Cornwall PL14 5RE 01579 362264



CORNWALL TILE
CENTRE

Pensilva Showroom

Open Mon - Fri 8.30am - 5pm
Saturday 9.00am - 1pm

Tiles & Mosaics for:

Bathrooms & Kitchens Living Areas Conservatories
Patios & External Areas Wet Rooms & Spas Swimming Pools
& All Commercial Applications

 atlas concorde

www.cornwalltile.com

OPEN FOR RETAIL, TRADE & COMMERCIAL ENQUIRIES



The
**RACEHORSE
INN**



Gastro Pub

Head Chef Phillip Bradshaw

Ray and Flori welcome you to
the Racehorse INN

A fine food experience in a convivial
atmosphere

Our superb Sunday lunch is one to be tried

Open Every Day for Lunch and Dinner

info@racehorseinn.co.uk
www.racehorseinn.co.uk

Take-out: Pizzas & Fish'n'Chips now available



North Hill Village, Cornwall, PL15 7PG

01566 786 916

J. H. Simmons

Painting & Decorating



No Job Too Small

For more information
Please call John
01579 362688

7 East Park, Pensilva

D.J.A. BUILDING SERVICES

ALL ASPECTS OF PROPERTY
MAINTENANCE BUILDING &
REFURBISHMENT

- * Bespoke Furniture and Kitchens
- * Wardrobes and Bookcases
- * Garden Sheds, Poultry Houses & Small Animal Shelters
- * Over 30 years' experience
- * Fully insured
- * References available
- * Free estimates
- * No VAT

**Call David on 01579
364050 / 07767662635**

Westwood Garden Maintenance



Antony Watts

Grass Cutting, Clearance

Weeding, Turfing

Hedge Cutting

Patio Cleaning, Planting

Regular Visits / One-off Contracts

Residential & Commercial

FREE ESTIMATES

01579 362019 www.westwoodgm.co.uk 07952 094472



THE HOME OF WOOD

BULK DISCOUNTS AVAILABLE ON OUR 30 YEAR SERVICE LIFE POSTS



OUR GOLD TREATED STAKES AND POSTS ARE THE ONLY ONES AVAILABLE IN THE UK THAT ARE APPROVED BY THE WPA BENCHMARK FOR 30 YEAR SERVICE LIFE

For more information please contact one of our team



Bond Timber, Bake Sawmill, Trerulefoot, Saltash, Cornwall,

PL12 5BW

01503 240 308 stacy@whbond.co.uk

Pensilva Stores

Amazing Value

Premier
a great deal more from your local store
Mon-Sat. 7:00 AM. – 9:30 PM.
Sunday 8:00 AM. – 9:30 PM.

- ✓ Fantastic Special Offers every month!!! (See store leaflets)
- ✓ Come and Check out our great deals on Wine, Beer and Spirits
- ✓ Local Produce: Homemade Butter and Clotted Cream, Meat from our local butcher
- ✓ Cornish Fresh Fruit and Vegetables
- ✓ Fresh Bread, Pasties and Cakes
- ✓ Take Away Coffee, tea and hot chocolate
- ✓ Newspapers and Magazines, Greeting Cards
- ✓ Paypoint, Lottery

*** Free to use ATM ***
*** Card Payment ***

Friendly Staff + Service with a Smile !!!

Pensilva Stores is a family run business who have been serving local people and visitors for more than 21 years.

Higher Road, Pensilva, Liskeard, Cornwall PL14 5NQ

Tel: 01579 362547

MENDOLOGY Garage Door Specialist

- Repairs
- Servicing
- Installations


Out of hours service
call Dave anytime 07974 442645

MENDOLOGY COMMERCIAL DOORS LTD
www.mendologydoors.co.uk

01579 363760

PensilvaCars

01579 363516

- ✓ MOTs Class 4
- ✓ Service
- ✓ Repair
- ✓ Tyres
- ✓ FREE Courtesy Car
- ✓ Car & Van Sales
- ✓ Diagnostics
- ✓ Air Conditioning
- ✓ 

We have offered a supply, fit & balance of tyre service for 10 years at competitive prices.

Most of our tyres can be supplied the same day.

LOCAL RECOVERY £45.00

www.pensilvacars.co.uk

pensilvacars@hotmail.co.uk

We can service and repair your car to manufacturer specification, keeping your dealer warranty without main dealer expense.





KEITH RICHARDS

Motor Body Repair Specialists

A family run business with fully equipped & maintained workshops & a focus on
Customer Care

- ◇ Motor Body Repair Specialist
- ◇ Mechanical Repairs
- ◇ Servicing to All Makes & Models
- ◇ Computer 4 Wheel Alignment
- ◇ 24 Hour Recovery Service
- ◇ Renovations & Re-sprays
- ◇ Member of RMI (Retail Motor Industry Federation)
- ◇ Latest Diagnostics (including specialists for VW, Audi, Seat,
Skoda & Vauxhall)

With over 30 years' experience we aim to provide you with:- Value for Money -
Friendly Service - Professional Approach - Expert Advice that you Can Trust
(Visit our website for more details)

Pensilva Industrial Estate, St Ive Road, Pensilva, Liskeard, Cornwall PL14 5RE

Tel: 01579 362593

Email: keith@keithrichardsmotorbody.co.uk

Fax: 01579 363194

Website: www.keithrichardsmotorbody.co.uk

Wm. Newham & Sons ^{Est. 1835}

Proprietor Robbie Savill AWCB

**CHIMNEY SWEEPS
& BLACKSMITHS**



CHIMNEY SWEEPING

BIRD GUARDS, COWLS & POTS FITTED

CCTV INSPECTIONS & SURVEYS

STACK REPAIRS & REBUILDS

RIGID STEEL SYSTEMS ERECTED

STAINLESS STEEL and PUMPED CONCRETE
CHIMNEY LINING

STOVES SUPPLIED, INSTALLED & REPAIRED

FIREPLACE ALTERATIONS & RENOVATIONS

FULL RANGE OF FIREPLACE FURNITURE
made to order

01579 347777

need somewhere to stay ?
between homes ?
family/friends visiting ?

Cutkive Wood
A colorful illustration of a holiday lodge with a sun, trees, and a house.
Holiday Lodges

ideal for Pensilva
& St.Ive

please call Jackie on
01579 362216

J. J. Child

Plumbing and heating engineer.

Oil appliance service, repair and breakdowns.

Over 30 years experience

Call John: 01579 362336 or 07837 921086



Bargain Corner Free Ads up to £50

Ads are free for items up to £50. £5 charge for items over £50. Please ring the Parish Office on **01579 363096** or leave a note at Millennium House reception or email **parishpump@btconnect.com**.

*****Please let us know when your item has sold*****

Wheel & Tyre. New. Size 195/50 R15. **£50. 01579 383054.**

Canon IP2700 **Printer. £20**
Computer screen 19" **£20.**
Epson Perfection v350 **Scanner Photo £20**
Sony Revia 42" **TV. £45.**
All in working order. **01579 363200**

Cross stitch work frame and stand, folds away into canvas carry case, no need to remove work. Cost £50 new. Offers in the region of **£15.**
Remington **foot spa,** very little used, with some oils etc. **£5.**
Pensilva **01579 363521**

Set of 3 **suitcases,** red, vgc, Antler, **£40 ono. 07770 747353.** Pensilva area

Car seat. Fisher Price FP2000 Safe Voyage seat used from birth. Good condition. Used about 5 times as extra seat at Nana's house. **£10.**
01579 383967 or 07933 960113 - St Ive

PANASONIC 32" **LCD TV.** Built-in Freeview. Hardly used. As New. Surplus to requirements. **£50.**
07891 849603

Toshiba **sewing machine £30.** New **pond liner 5m x 5m £30.** Five **Crittall windows 900mm x 1000mm approx.** Suitable for shed or greenhouse. **Free. 01579 363573**

Set of **Snow chains,** new and unused fit 14" to 19" rims, self adjusting. **£40**
Pensilva **01579 362207**

Approx. 2,200 **copper disc rivets for fibre cement roof slating. £10.**
5 Medium size **Kit Bags** in reasonably good condition (no cords). **£25** the five.
Set of 5 collectible **Meerkats.** VGC with certificates. **£30** the set of 5 or **£10** each.
2 large size lightweight camouflage military jackets **£5** each. **Tel 01579-384658**

2 x Medium Weight **Car Ramps £20.**
Push Mower £5. 01579 363199

Maximuscle **home gym system £100** ono.
Black leather **chaise longue.** Excellent condition. **£100** ono.

Scelextric Sport Le Mans set. Still in box. Great condition. **£100.**

Plastering gear: 110v paddle mix with transformer, various trowels, hawk and other bits. Good for DIY etc. **£70** ono.

Easycamp Tour Ligata **6 berth tent.** Used only 3 times. **£100** or offers.

Dark brown **leather chair. £50**

07980 380224 - Pensilva area.

Brown speckled **carpet,** 2m x 5m. Brand new (over ordered). **£50.**

Arch design **headboards. £20 each or £35 pair. 01579 362211**

Pensilva Post Office

Located through the Café on the 1st floor of Millennium House



Opening times:

- Tuesday - 9am to 1pm
- Wednesday - 9am to 12 noon
- Friday - 9am to 12 noon

Also at St Ive Institute, Wednesdays 10:30-12 noon.



Many thanks to the intrepid team that defeated the brambles and associated rubbish at the top corner of Slade Park Road, Pensilva. (Please note that this happened before social distancing was a thing).