

THE PARISH PUMP



March 2020
Edition 460



The Newsletter for the Parish of St Ives



Pensilva Youth FC under eights, who play in the East Cornwall Youth Football League.

Many thanks to sponsors Pensilva Stores for the kit and Martin Perry Associates for the jackets. Players are Dexter, Leo, Logan, Zack, Ollie, Trinity, Thomas, Noah and Cody.

Disclaimer

The articles appearing in this magazine do not necessarily reflect the views of the Parish Council nor of the Parish Pump Editor.

Parish Councillors Telephone List

| | | | |
|--|--------------------------------|------------------------|--------------|
| Peter Haimes (chair) | 01579 362459 | Alan Moss (vice-chair) | 01579 362064 |
| James Bruce | 07411 192645 | Marlene Carr | 01579 362919 |
| Martin Corney | 01579 382450 | Angie Haimes | 01579 362459 |
| Rosemary Farley | 01579 384810 | Tony Hodson | 07973 536964 |
| Nigel Libby | 07968 891814 | Kath Parkes | 01579 362005 |
| Ivor Vaughan | 07979 934604 | Craig Vaughnley | 01579 364083 |
| Samantha Reilly | via Parish Office 01579 363096 | | |
| Sharon Daw (Cornwall Councillor) 07837 379305 slash.dash.daw@gmail.com | | | |

Meetings of St Ive Parish Council

2nd Monday monthly: Parish Council Meeting, alternating between St Ive Village Hall and Millennium House (please refer to notice boards for the agenda showing start time and venue each month). Any changes to the regular dates (i.e. Bank Holidays etc.) will be publicised accordingly.

4th Monday Monthly: Parish Council Planning Committee Meeting, 7 pm at Millennium House Pensilva, followed by the Parish Council Finance & Administration Committee Meeting commencing at 7.30 in the same venue.

Date of Next Parish Council Meeting

Monday 9th March, 2020



Devon & Cornwall Police
Building safer communities together



101

Minicom 18001 101

Police Community Neighbourhood Office

Your Community Support Officer is PCSO Steve Edser 30173.

email: CIOsnbmliskeard@devonandcornwall.pnn.police.uk

To report a crime call 101 or go to www.devon-cornwall.police.uk

In an emergency call 999

Contact details for St. Ives Parish Council and for Millennium House

Address for correspondence: Millennium House, Century Square, Pensilva PL14 5NF

General Parish matters should be raised initially with the Parish Clerk, Jenny Hoskin, who will present them to the Parish Council.

Telephone: 01579 363096, email: stiveparish@btconnect.com

For accounts matters for the Parish and for Millennium House contact John Body, Finance Officer: 01579 362102, email: millenniumhouseadmin@btconnect.com

Millennium House enquiries and reservations: 01579 363096

email: millenniumhouse@btconnect.com.

On the web: Millennium House Website: www.cornwallvenue.com

Parish website: st-ive-parishcouncil.gov.uk Facebook: facebook.com/stiveparishcouncil

Parish Pump Information and Contact Details

To contact the editor please email: parishpump@btconnect.com

or phone the Parish office: **01579 363096**.

Hardcopy submissions by post or by hand to the Parish office, Millennium House.

Softcopy submissions: By email to the editor in MS Word, MS Publisher, pdf, Tiff or jpeg. Please use A4 pages and minimum 16 point font as the Pump is initially produced in A4 size and reduced to an A5 booklet at the printing stage. If in doubt please contact the editor.

Current Advertising Prices including VAT at 20%

Per issue: Quarter Page £7.50 Half Page £15.00 Full Page £25.00

10% discount for 12 months paid in advance.

Bargain Corner free ads by email to the editor or drop off at the Parish Office.

Deadline for the Parish Pump is STRICTLY 15th of every month

THE MEL BAR

Relax and wind down
at the Mel Bar, Millennium House



From the Editor

Well, the way 2020's going, we'll be up to 'Storm Zebedee' before we get any warm, dry weather! It's an honour, though, for our parish, to have been chosen to host **H₂O2020**, the Association of Water Molecules' global convention; by the time February is over, every single water molecule on planet Earth will have passed through St Ives Parish on its way to cause mischief somewhere else. As far as I've heard, though, we have so far got off lightly in terms of damage, compared to other, less fortunate places.

I must draw your attention to the notice on page 8 about the Age UK electric vehicle based at Millennium House. It is available for anybody to drive, free of charge, provided that it is used to help an elderly person to attend appointments, or access services, or to do whatever they need. But it does require somebody to drive it, so we need volunteers to register. Electric vehicles are easy to drive, as you'll find out if you read Tony Hill's article on the subject on page 11.

Keep well - Joe. (P.S. It's probably not true about the water molecules!)

VOLUNTEER NEEDED

TO DISTRIBUTE THE PARISH PUMP IN GLEN PARK, PENSILVA

If you are able to help please call:

Sue and Shaun Hill on 01579 363631 or 07481 133343

Or email: parishpump@btconnect.com

The round takes about one hour for one person, once a month.

Thanks!

Millennium House Opening Hours

Reception

9am till 2.30pm Monday to Friday

If no-one is available please leave a message in our **letter box** at the front of the building or on our answer phone by calling **01579 363096**.

Community Coffee Shop

Please see separate notice on the next page

Bar

5pm till 11pm
12am till 11pm

Monday to Friday
Saturday and Sunday

COMMUNITY COFFEE SHOP
MILLENNIUM HOUSE, PENSILVA
OPENING HOURS

| | |
|------------------|--------------------------|
| Monday | 10.a.m. to 1.p.m. |
| Tuesday | 9.a.m. to 1.p.m. |
| Wednesday | 9.a.m. to 1.p.m. |
| Thursday | 9.a.m. to 1.p.m. |
| Friday | 9.a.m. to 1.p.m. |

Open to small groups (pre booked) for Cream Teas - Buffet - Lunch Bites

The Coffee Shop is run by volunteers who aim to offer a cheery, relaxed atmosphere for you to sit and enjoy a cuppa. We adapt our service in response to feedback from members of the public, whose support we rely on to continue. We would like to offer our sincere thanks for your support of the Coffee Shop.

RESIDENTS OF ST. IVE

Did you know we have a reasonably large, well appointed Village Hall at St. Ive Cross? It is currently being used for:-

| | | |
|--------------------|--|-----------------|
| Childrens Parties, | Wedding receptions, | Wakes, |
| General Events, | Line Dancing, | Gardening Club, |
| Snooker Club, | Singing Group, | Games Nights, |
| Coffee Mornings, | Post Office (Wednesdays 10.30am - 12.00) | |

The Hall is run by a Committee of Volunteers who could do with some help at times. If you fancy coming to a Committee Meeting to see how it all works, you would be made very welcome.

The next meeting is on Tuesday 14th. April, with the AGM at 7pm, followed immediately by the quarterly meeting.

If you want somewhere as a venue for hire, try it!! Very reasonable rates!

Contact the Booking Officer..... Suzy on 01579 383291

CHAIRMAN'S COLUMN

I have a few things to pass on this month. Firstly, I would like to say sorry to customers at Millennium House for a shortage of hot water in many areas, (showers especially). We have had a major problem with the hot water boiler, and after considerable effort by our gas service contractor, they have been unable to source the spares to repair our obsolete boiler, so a new boiler has been sourced and installation should be completed by the beginning of March. This is also why part of the pergola is missing by the front door, it has had to be removed to allow for scaffolding to be erected. This in turn has highlighted considerable deterioration in the pergola woodwork, which may mean it has to be removed completely for safety reasons.

A couple of dates for your diary now, on March 21st the theatre is once again coming to Pensilva, with the staging of "Agatha Crusty and the Village Hall Murder" by YN PONT DA (see advert elsewhere in the Pump). The other diary date is May 8th when Millennium House will be combining its anniversary party with the 75th anniversary of VE day (including the 3pm national toast to the fallen). This will consist of a street party, either in the sports hall or outside depending on the weather!

I would like to thank those who have volunteered to help clear the triangle of brambles at the end of Slade Park Road, in preparation for tree planting. So far, the weather has been against us in February, but hopefully we can crack on in early March and get the trees planted later in March.

Lastly, I have to let you know that the recycling of crisp packets etc at Millennium House has stopped at the end of it's trial period. This is as a result of several problems with the collection, sorting and growth in the size of the operation from the agreed two boxes, which made the reception area look untidy. It is sad we had to remove this facility, but it is still available at Pensilva school and Tesco's at Callington. That's all for this month.

Pete Haimes

FILM CLUB REPORT

About fifty people watched the screening of Downton Abbey at Millennium House on Valentine's Day, and they thoroughly enjoyed it, judging by the audible chuckles throughout.

On March 13th we will be showing Green Book (see separate notice). The San Francisco Chronicle's reviewer wrote of this film:

"...there's something so deeply right about this movie, so true to the time depicted and so welcome in this moment; so light in its touch, so properly respectful of its characters, and so big in its spirit, that the movie acquires a glow. It achieves that glow slowly, but by the middle and certainly by the end, it's there, the sense of something magical happening, on screen and within the audience."

Doors open, as usual, at 7pm with the movie starting at 7.30.

MOBILE LIBRARY

The County Mobile Library visits our area once a month on Fridays of "Week 3" (NOTE: not necessarily the 3rd Friday of the month).



**Next visits: 14th Feb, 13th Mar,
3rd Apr TBC, 8th May, 5th Jun**
**Stops at: The Victoria Inn, Pensilva, 10.25-
10.45am; Quethiock bus stop. 11.00 to 11.20am.**

Supporting Guiding & Scouting Activities in Pensilva 200 CLUB Draw Results for January 2020

| | | |
|------------------------------------|--------------------------------------|----------------------------------|
| 1st No. 38 Mrs M Dymond | 2nd No. 43 Mrs P Mitchell | 3rd No. 48 Mrs J Wise |
|------------------------------------|--------------------------------------|----------------------------------|

Thank you for your support



AGEUK Helpline
on 01872 266388 or
email@ageukcornwall.org.uk
Lee Davies or Ann Lewis

Age UK Electric Vehicle at Millennium House

AGEUK has successfully secured European Regional Development (ERDF) funding to contribute towards the purchase of 6 fully accessible Electric Vehicles. 6 Electric Vehicles have now been purchased and are ready to be used by local groups & the Cornish community.

Their aim is to connect local communities and reduce social isolation using environmentally-friendly transport solutions. The Vehicle situated at Millennium House can be used by individuals or community groups, for hospital visits, outings etc. The vehicle is capable of carrying a wheelchair.

Individuals and groups will have to register with AGEUK, bookings are also carried out through AGE UK for a fee. Application forms can be obtained from Millennium House Reception.

The Parish Council are looking for Volunteer Drivers for the Parish, to be called on to use the vehicle for those in the community who are unable to get transport to appointments, or get to the shops. Please contact our Parish Clerk on 01579 363096 to register your interest



SEW, KNIT AND NATTER.
WHY NOT JOIN US ON
THE LAST TUESDAY OF EACH MONTH
for sewing, knitting or just for a chat and a
cup of tea or coffee and cake.

We meet at ST JOHN'S CHURCH, PENSILVA from 2pm to 4pm.

TRADITIONAL STONE SERVICES

CLASSIC & TIMELESS STONE MASONRY AND LETTERING

MEMORIAL CLEANING

COMMISSIONS TAKEN

01579 363693 OR 07507 782282

PENSILVA W.I. FEBRUARY MEETING REPORT

Wildlife, we all love looking at pictures of animals in their own habitat, so Pensilva WI were in for a treat when Colin Sargent came to show us a selection of the truly awe-inspiring photos he had taken. President Jean Hoare warmly thanked Colin (and his wife) for coming along and showing them to us.

Reminder: Saturday 22nd February, Skittles afternoon, Millennium House, Pensilva, 2.00pm.

Horticultural Show meeting, Monday 24th February, 7.00pm at Jean's.

Birthdays of the month: Rosemary Farley, Julie Thorpe, Jacqueline Olver and Margaret Hangar were presented with a card and posies.

Our annual meeting was held with President and Committee being elected and prizes awarded for the competitions held throughout the year. Flowers:

1st Jill Pascoe, 2nd Mary Yates, joint 3rd Verna Dawe and Alison Willis.

Crafts: 1st Verna Dawe, 2nd Cherry Woodhouse, joint 3rd Frances Tucker and Alison Willis.

Monthly competition: Flower 1st Irene Elliot, 2nd Maureen Walker, 3rd Alison Willis. Craft 1st Alison Willis, 2nd Verna Dawe, 3rd Irene Elliot.

Next meeting Wednesday 11th March at 7.15m in Millennium House, Pensilva will be Mike Harwood talking about 'the sailing of the Mayflower'. Competition will be 'a boat related item'.

St Ive and District Gardening Association

At our first meeting of the new year, Michael Stephens came along to give us some tips for growing the best onions and some interesting facts about them. Did you know onions only grow wild in the Northern Hemisphere?

He also covered their decorative relatives, the alliums, with ideas for choosing the right ones to fill those gaps in our borders.

Next month on 2nd March, Iain Rowe, Secretary of Caradon Archaeology, will talk about Caradon Mines and Miners. We meet at 7.30pm in St Ive Village Hall and visitors are always welcome to join us.

This talk will follow our AGM which will start at 7.00pm.

Tree Planting Event at St Ive

On **Saturday 21st March**, the St Ive Parish Climate Action Group will be holding a tree-planting event in St Ive recreation park. Please meet in St Ive Village Hall at 10.00am ready for tree planting at 10.30am. You can take the No 74 bus from Pensilva at 9.48am arriving in St Ive at 9.56am. The bus goes back to Pensilva at 12.30 and 14.30pm. There is also a car park near the recreation ground. Bring your children and a spade or hand tools if you have them. Come in your wellies or boots and wrap up warm. There will be hot and cold drinks supplied after the trees are planted.

Bring your own sandwiches if you wish. No dogs allowed in the park.

The trees, supplied by The Woodland Trust, will be elder, rowan, crab-apple and hazel. Please tell your children that the trees are very small when they are planted. There may be a few bigger plum and apple trees to plant. We have chosen trees that give food for humans and wildlife.

The trees planted will be counted for our tree-planting survey and for the Forest for Cornwall.

In future, **St. Ive Parish Climate Action Group** meetings will be held on the first Thursday of each month at 7pm. The March meeting will be on March 5th, 2020, at Millennium House, Pensilva, usually in the upstairs gallery. Anybody who would like to get involved please come and join us or for more information contact pwwiscombe@hotmail.com.

Saint Ive Parish tree-planting survey

Please let us know about any trees that you plant within the Parish. We will include them in our own survey and we will notify the Forest for Cornwall on your behalf, if appropriate.

Contact us by phone: 01579 383967, or by email:

parishpump@btconnect.com, or via the Saint Ive Parish Climate Action Group Facebook page. Pictures very welcome.

Electric Cars – The Pros and Cons Tony Hill, Golberdon Road, Pensilva

We have owned a Nissan Leaf, since October 2017. We bought it second hand by trading in our previous vehicle. We took out finance to pay for it which costs £160 per month. The price includes the cost of the battery, but some electric cars have a leasing arrangement for the battery.

The Pros:

- Charging at home we can make return journeys to anywhere up to about 40 miles away without having to find a charging point. That's roughly Truro and back or Totnes and back. A larger range is possible on flatter roads, and newer models have a greater range.
- We have photovoltaics at home, so charging on good, sunny days is free.
- There is no road tax to pay and city congestion charges do not apply.
- Driving costs when charging at a service station are about 6.25pence per mile, which is nearly half the cost of driving with petrol or diesel.
- We are on an electric vehicle tariff with our energy supplier (Good Energy) which saves us about £80 per year.
- It's easy to drive. It's just like driving any other automatic car, only quieter. The dashboard displays a monitor of your driving energy use, so you can easily learn to drive at maximum efficiency. It also displays how many miles you have enough energy for.
- The car does not produce any exhaust pollution.
- All motorway service stations have fast charging points. We have never had to wait for one to become free.
- Servicing the vehicle is cheaper, no oil changes, etc.
- A grant is available to install a home charging point which is twice as fast as charging using a domestic 13amp socket.
- When braking and when going downhill, the car is charging itself.
- Overall, even with the finance costs, I believe we are financially better off than when we ran a petrol car which had no regular finance costs.

The Cons:

- Long journeys may require more planning to find charging stations.
- A smartphone is necessary with charging company apps to make payments and Zapmap to locate the points.
- The most efficient speed is 55-60 miles per hour, so motorway journeys take longer.
- When using the car heater you lose 2 or 3 miles off the overall distance available.
- Very cold weather reduces the battery efficiency so you have slightly fewer miles available.
- The fastest chargers, currently 50kW CHAdeMO, take about 45 minutes for a full charge. More powerful chargers are anticipated soon, which will reduce the charging time.
- Different companies have different paying methods. Hopefully this will change in the near future and become easier.

Ruth and Colleen's Monthly

BINGO

At Millennium House

on Tuesday March 3rd

Eyes down at 7:30pm

Over 18's only

£££ CASH PRIZES £££

St Ive Church

Table Top Sale

Sat 7th March 10:30 to 3pm

Lots of Tables

Loads of Bargains

House clearance Items

Farm Fresh Meat from Trehill Farm

Homemade Refreshments

Ample parking behind the Church

6 NATIONS

LIVE

MILLENNIUM HOUSE

BIG SCREEN PROJECTOR

Sunday 8th March

15:00 Scotland v France

Saturday 14th March

14.15 Wales v Scotland

16:45 Italy v England

15:00 France v Ireland

The following matches will be shown in the Mel Bar

Saturday 7th March

14:15 Italy v Ireland

16:45 Wales v England

MEAL DEAL PINT AND PASTY £5

Pensilva Community Association and C-Fylm Present

PENSILVA FILM CLUB



FRIDAY, MARCH 13th 2020

AND EVERY SECOND FRIDAY OF THE MONTH AFTER THAT!

DOORS OPEN 7PM, FILM STARTS 7:30PM

£2.50
for C-Fylm
members*

JOIN FOR FREE ON
THE DOOR



Dr Don Shirley is a world-class African-American pianist, who is about to embark on a concert tour in the Deep South in 1962. In need of a driver and protection, Shirley recruits Tony Lip, a tough-talking bouncer from an Italian-American neighbourhood in the Bronx. Despite their differences, the two men soon develop an unexpected bond while confronting racism and danger in an era of segregation.



PENSILVA W.I. will be holding an

AFTERNOON TEA

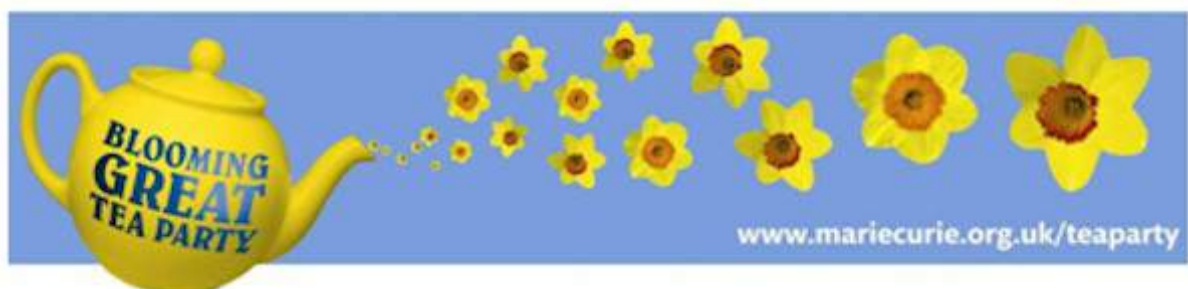
IN AID MARIE CURIE CANCER CARE

At PENSILVA VILLAGE HALL

On SATURDAY 14TH MARCH at 2.30pm.

RAFFLE AND BRING AND BUY.

Entry £3.00 to include tea and cakes.



Yn Poynt Da
present

**AGATHA CRUSTY
and
THE VILLAGE
HALL**

MURDERS

By Derek Webb

on

Saturday 21st March

in

**Millennium House
Pensilva**

at 7.30pm

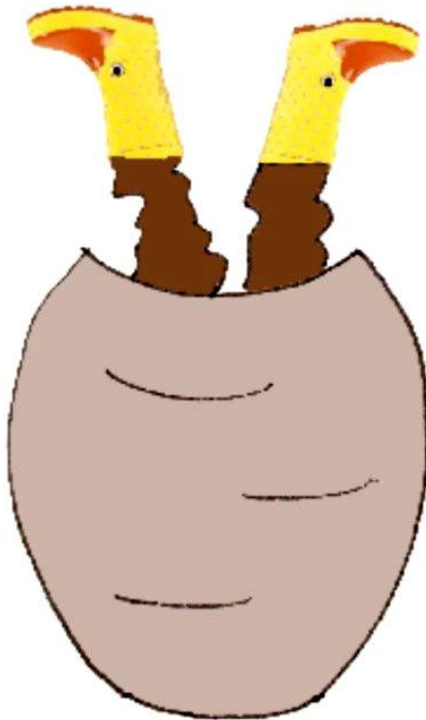
Refreshments

available

Tickets - price £5

obtainable from

**Millennium House
reception**



'An amateur production
by arrangement with
Stagescripts Ltd'

MILLENNIUM HOUSE EVENTS PRESENTS

EARLY EASTER



GAMES FUN PRIZES

**MONDAY MARCH 23RD
EYES DOWN 7:30PM
AT MILLENNIUM HOUSE, PENSILVA**

millenniumhouse.org.uk

Princess Rd, Pensilva, Liskeard PL14 5NF



TABLETOP

Sale



SATURDAY APRIL 18TH

BUYERS: 10AM - 1PM, FREE ENTRY

**SELLERS: SETUP FROM 9AM, £5
PER TABLE. PLEASE CALL OR DROP
IN TO BOOK A TABLE.**

**MILLENNIUM HOUSE
01579 363096**

PENSILVA WEDNESDAY CLUB

**The Wednesday Club now meets at Millennium House,
Pensilva 2 - 4p.m on alternate Wednesdays. Next
meetings: March 4th & 18th, April 1st, 15th & 29th**

All adults welcome to join

£2 per meeting including refreshments.

Information: Sheila Wherly 362832 (Chair)

Marlene Carr 362919 (Secretary)

Art Classes *with Yvette*

Millennium Centre, Pensilva.

*If you have always wanted to Sketch or Paint 'Why Wait'??
Come and Join one of my classes, they are fully structured,
suitable for both beginners and improvers.*

Kick start your hobby in a 'friendly and relaxed' atmosphere, aimed at 'enjoyment'.

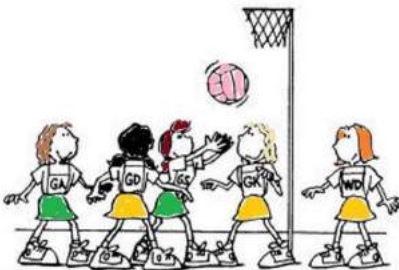
Drawing Class - Wednesday Mornings 9.30am to 12.30pm

Watercolour Art Class - Wednesday Afternoon 1.30 to 4.30pm

Other Classes & One day workshops or demonstrations also available.

Contact Yvette on 07886 343621 or

email: yvettewiltshire@sky.com website: www.artwithyvette.com



Ever tried...

Walking Netball?

**Come along to Millennium House, Pensilva
Every Thursday 4.45-5.45pm - £2 per session**

Info from rosemaryfarley@gmail.com or

Irene Elliott 01579362069

Victoria Inn

The Cross, Pensilva, Liskeard, Cornwall. PL14 5NB

Tel : 01579 363933

Website : www.thevictoriainnpensilva.co.uk

Opening Times

Monday 5pm – 11pm (Food 5.30pm – 8.30pm)

Tuesday 5pm – 11pm (Food 5.30pm – 8.30pm)

Wednesday 12–3pm, 5pm–11pm (Food 12–3pm & 5.30–8.30pm)

Thursday 5pm – 11pm (Food 5.30pm – 8.30pm)

Friday 9.30am – 11pm (Food available 9.30am – 8.30pm)

Saturday 12 – 11pm (Food 12 – 8.30pm)

Sunday 12 – 11pm (Food 12 - 7pm)

Food available 7 days a week

New Menu from 1st February 2020

Eat In or Takeaway

**Monday, Tuesday and Thursday Evening £5 Special
(Separate menu available)**

OAP Carvery every Wednesday 12 – 3pm

Sunday Carvery 12 – 4pm

MOTHERS DAY

We are taking bookings for our Mothers Day Carvery

There will be two sittings 12-2pm and 3pm-5pm

Please book early to avoid disappointment

DEFIB FUNDRAISING

A huge thank you to everyone who attended our Valentines Evening and all the locals in the pub for their contributions so far. The raffle will take place on the 1st March when we are hosting a Motorcycle Rideout, starting at the pub at 10am and returning again at around 3pm.

Please contact us on 01579 363933 for more details of the ride or if you wish to donate money or a raffle prize

Pensioners Lunch

2 Course Meal plus Tea or Coffee

Only £6.00

Every Tuesday here at Millennium House

Speak to our reception or

telephone Millennium House on 01579 363096



So why not join us for good food and good company, all on the day you collect your pension?

All Being Well

Your local, friendly gym.

Over 20 years working in our local community to improve health, fitness and well being. Call **01579 363890**, drop in at Millennium House, Pensilva, email abwgym@gmail.com or visit our website **www.abwgym.co.uk**

Debbie Hicks - Counselling and Psychotherapy

Caring, confidential counselling for all.

I work in a therapeutic relationship to help you understand yourself better.

I offer a warm, approachable, relaxed environment for you to untangle your thoughts and emotions.

More info on my website or by contacting me.

www.debbiehickscounselling.co.uk

Email: debbiehicks10@gmail.com

07851 133782



MEMORY PROBLEMS?

If you have memory problems, whether mild, moderate or severe, you can feel a bit isolated or lonely. If you care for someone with this problem, we know how hard it can be. Our Café offers the opportunity for you to relax for a couple of hours now and then.

We have a varied programme throughout the year with some interesting speakers, musicians, crafts, games and occasional outings. You would be very welcome to come and join us for some reminiscences, music, fun and laughter.

PENSILVA MEMORY CAFÉ

Social activities and refreshments in a friendly and informal setting. We'd love to see you. We meet on the 4th Thursday of each month at St John's Church from 2pm to 4pm. Tea/coffee and cakes always provided.

Free entry but donations of £1 per person are

much appreciated.

For more info phone Pat 01579 363461 or Carolyn 01579 362698



LENT LUNCHES

Every Thursday from
5th March to 9th April
12.00 noon to 1.30 pm



Please come & enjoy a simple
meal of homemade soup
with a roll & cheese
and coffee or tea.

Suggested donation: £3.50

Badminton?

Come and join our relaxed and friendly group at Pensilva Millennium House

Mon & Tue 7.30 - 9.30pm

Friday 8.00 - 10.00pm

For further info phone

Nigel or Carol on

01579 363594 or

07885 798370

PENMILL ART GROUP

We are a small, friendly group using all art mediums. If you paint we would love you to join us.

We meet at Millennium House **10-2 every Friday**. Please come & see us or phone Pam on **01579 363441**.

Wesley Online CENTRE

Computers, Internet & Support - FREE!

Opening Times:

Tuesday: 7-9pm

Wednesday: 10am-1pm

Friday: 2-5pm;

Saturday: 10am-12pm



PC access and advice in a friendly and supportive setting.

For Everyone:

Whether you're a complete computer novice and would like to learn some basics, want access and information to help with JobSearch or UC, the WOC is here to support you with it's PC suite – all for free!

Liskeard Methodist Church, Barn Street, Liskeard PL14 4BL

For more info: call 01579 276877 or email online@liskeardmethodist.org.uk

PENSILVA VILLAGE HALL

Anyone wishing to book the hall for meetings, birthday parties or fundraisers please contact Peter or Jackie Browning on **01579 363212** or email **peterpensilva@gmail.com**



Please note that as well as hall rent there is a coin meter for heating at 60p/hr.

We hold a Hall a users and committee meeting on the fourth Monday of every 2nd month starting in January at 7.00pm. Please feel free to come along and support us.

Organisations that meet in Pensilva Village Hall

| Meeting Times | Organisation | Contact Person | Telephone |
|---------------------|--------------|----------------------|--------------|
| Mon. 4:00 - 6:00 | Brownies | Mrs Martha Oliver | 01579 362239 |
| Wed. 7:00 & various | Snooker Club | Mr Philip Bond | 01579 362091 |
| Thu. 6:00 - 8:00 | Guides | Miss Caroline Hambly | 01579 363228 |
| Fri. 1:00 - 3:00 | MIMS | Chris | 01579 343702 |
| Fri. 4:00 - 5:00 | Rainbows | Mrs Lynne Bond | 01579 362091 |

St Ive Institute & Village Hall

| | | |
|-------------------------|--|--|
| Every Wednesday | 10:30am to 12 noon 10:30am to 11:30am | Coffee morning Travelling Post Office |
| First Monday | 7:30pm | St Ive Gardening Club |
| Every Monday & Thursday | 7:00pm | St Ive Snooker Club |

Debbie's Care Services Recruitment Agency

Tel. 0777 948 3230

Hello, my name is Debbie. I am a local lady who has been working in the community for over 30 years. I run a Care Recruitment Service placing fully trained carers into community care roles.

We provide the following services and more!

- Assisting bathing / showering
- Preparation of meals
- Cleaning / Shopping / Ironing
- Companionship / Friendship and emotional support
- Assisting with mobility
- Day, Evening and Night Care



Registered

*Supported by
local Doctors*



Started by PATIENTS Run by PATIENTS For the PATIENTS
with COPD and long term conditions

Are you living with COPD or another long term lung condition?

Why not join our friendly group for company, light exercise & support?

We meet upstairs in Millennium House, Pensilva, Mondays 12.30 - 2.30

First week FREE. Thereafter £3 per week. Refreshments provided.

If you would like more information please call us

Pauline: 01579 532467

Jeanette: 01579 363691



SUPPORTING
**PROSTATE
CANCER UK**

On March 25th, Dr David Harris from Tamar Valley Health will be our guest speaker to talk about “Recent developments in the management of side effects resulting from prostate cancer and treatment.” As medical research continues to improve, Dr Harris’ talk will be of interest to anyone diagnosed with prostate cancer.

It has recently been reported that prostate cancer is now the most frequently diagnosed cancer in the UK, overtaking breast cancer. The reasons are complex, e.g. ageing population, better testing, but is also due to men being more open to considering their long-term health, helped also by a number of male celebrities revealing their own conditions. TAPS exists not only to support men already with prostate cancer but also to raise awareness so that more men may discover their condition in time to improve their life expectancy.

Our meetings take place on the fourth Wednesday of each month and are held in the

Council Chamber in Callington Town Hall at 6pm

TAPS membership is free and open to men and their partners. For more information on TAPS please contact Chris Greensted by phone on 01822 834797 or by email to tapsinfo555@gmail.com.

PATIENT PARTICIPATION GROUP

We are a group of patients who meet every other month with Pensilva Health Centre for discussion, comments and suggestions about your surgery. We also support the flu clinic sessions and are available to offer assistance as and when required.

We also organise a 'Walking for Health' group and a 'Carer & Bereavement Group'.

For information contact Marlene Carr 362919 (Chair)

Alford Joinery - For all your joinery needs

Specialists in bespoke doors, windows, staircases, conservatories, etc.

- 20 years experience
 - Large or small jobs
 - All joinery hand-crafted
 - Top quality FSC certified timbers
 - All joinery can be fitted if required.
- 01208 873444 or 07757 666460**
info@alfordjoinery.com
www.alfordjoinery.com

PENSILVA HEALTH CENTRE CARERS AND BEREAVEMENT GROUP

Are you a carer, bereaved or lonely? Then come along and join our Group. Tea, Coffee and plenty of friendly chat and, when possible, local trips to various venues.

**Meetings are held every third Thursday of each month at 11.30.a.m.
Meet in Millennium House car park.**

For any information please contact Dot Napier 01579 362001



Struggling with Sight Loss?

iSight Cornwall offers practical help to people living with sight loss in Cornwall including:

Low Vision: Advice for low vision aids

Assistive Technology: Advice on products

Benefits Advice: Assistance to claim entitlements

Equipment Demonstration: Advice on gadgets

Social Clubs & Activities: Links to clubs & activities in the county

For more details Telephone 01872 261110 or visit

www.isightcornwall.org.uk

St Ive Church

Services

| | | | |
|----------|-----------------------------|----------------|---|
| Mar 1st | Morning Worship | John Howard | 11.15am |
| Mar 8th | Service at Chapel | | 11am |
| Mar 15th | Holy Communion | Rev Becca Bell | 11.15am <i>Followed by lunch</i> |
| Mar 22nd | Service at Chapel | | 11am |
| Mar 29th | Cluster Service at St Cleer | | 10:30am |

Other March Events

Fri 6th Produce Market and Lent Lunch 10:30am

Home made cakes etc. Fresh veg. Locally made pasties. Pickles, jams and much more.
Refreshments and delicious soups. Plus **Farm fresh meat from Trehill Farm Produce.**

Sat 7th March Table Top Sale 10:30 to 3pm

Lots of tables. Homemade refreshments. Locally made pasties. Loads of bargains.
Farm fresh meat. Ample parking behind the church.

Fri 13th & Fri 27th Lent lunch in the Chapel 12:00

Sun 15th Lunch on Church 12:45pm All welcome. Only £7 for 2 courses.

Fri 20th Lent Lunch 12:00. Delicious homemade soups with crusty bread.

Priest in Charge Revd Becca Bell **07899 363458** revbeccabell@gmail.com

Church Wardens Brian Dwelly **01579 364010** btdwelly@aol.com

Richard Connell **01579 363833**

Please let the Churchwardens know of anyone requiring a home or hospital visit.

Donations for Liskeard Food Bank can be left in the Church each day 10am to 4pm.

Pensilva Country Dance Club

We are a small, friendly group that meets once a fortnight in Millennium House, Thursdays, 7.30pm to 9.30pm. If you would like to join us to try country dancing, we would give you a warm welcome. No previous experience needed!

For more information ring Jill 362819 or Liz 340942.

St Ive Methodist Chapel

Services for March 2020

| | | |
|---------------------|-------------|---|
| Sun 1st Mar | 11.15 am | United Service at St Ive Church |
| Sun 8th Mar | 11 am | Mr Julian Langston |
| Sun 15th Mar | 11:15am | United Service at St Ive Church |
| Sun 22nd Mar | 11am 5pm | Rev. Iris Bray with Communion Food for Thought at Pensilva |
| Sun Mar 29th | 11am | Mrs Linda Eastlake |

The Chattermakers craft group will meet in the Guild room on Thu 5th & 19th Mar from 7:30 pm. All welcome.

The Village prayer group will meet on Wed 11th and 25th March at 7:30pm. All welcome. Please ring 01579 382334 to make sure the meeting is going ahead.



Maintaining and preserving our countryside for the benefit of all.

Dry stone walls

Hedgelaying / Hedgestepping

Stone faced walls

Cobblestoning

Land management

All aspects of landscaping

**For commissions, advice, guidance and no obligation quotes,
please contact us on:**

Mobile: 07539 296799 & just.in.stone@outlook.com

ST JOHN'S CHURCH, PENSILVA

Services for March 2020

Anglicans and Methodists share services at 11 am each Sunday, coffee served before service

Sunday 1st 11am Mrs Kathy Lang

6pm Liskeard Methodist Church

Sunday 8th 11am Café Church

Sunday 15th 11 am Anglican Service

Sunday 22nd 11am Rev. Sue Hill, Holy Communion.

5pm Food for Thought

Sunday 29th 11am Menhenniot Church, United Cluster Service

Café Style Church at 10am each Thursday followed by coffee, discussion & chat.
Everyone very welcome.

The church is open daily 10am to 4pm for private prayer or meditation or just a cup of tea or coffee.

Afternoon Tea Friday 6th March, 3pm at St John's. Everyone very welcome.

Lent Lunches. Thu. 5, 12, 19 & 26th March. 12 noon - 1:30pm, at St John's Church.

Lent Course. Fri. at 7:30pm on 6, 13, 20 & 27th March. Contact Carolyn on 362698 for further details.

Sew Knit and Natter, Tuesday 31st March from 2-4pm, everyone very welcome to join this friendly group.

Memory Café Thu 26th Mar, 2-4pm for those with memory loss and their carers.

Prayer Group: 2pm Fri 13th & 27th March. Please ring Eileen on 362580 or Carolyn on 362698 if you would like prayer for yourself or someone else.

For further details of the Services held in St John's, if you know of any illness or need in the village or if you would like your wedding or baptism in the church, please contact: Geoff Cox, 362698 or Frances Tucker, 363718.



Collection point open every day, 10am to 4pm in St John's Church, Pensilva.

PENROSS

Rosecraddoc Lodge Holiday Bungalows
(Between Pensilva & Liskeard)

Ideal for family & friends coming to visit!



Refurbished in 2018. Sleeps 4. Electric, heating, bedding & towels inc in rent. Patio. Free wi-fi. Follow us on Facebook.

Sorry no pets or smoking.

Contact Julie Tucker on 01579 362221 or

email penhargetfarm@gmail.com

for 15% discount

NICOLA GREENE

BSc (hons) Podiatry MChs

HPC Registered Chiropodist/Podiatrist

**Home Visit Practice treating all
your foot care needs:**

- Nail Cutting
- Corns and Calluses
- Thickened Nails
- Dry Cracked Skin
- Verrucae
- Foot Pain
- Diabetic Foot Assessments
- Wound Care

T: 01579 590027

T: 01752 291565

M: 07786164205

E: nicki_greene@yahoo.com

JPH plastering and rendering

Internal plastering

Internal and external rendering

Internal and external painting and decorating

Property maintenance

Landscaping and land management

**For estimates and no obligation quotes contact Justin on:
07530 296799 or @JPH garden and home maintenance**

Matt's Windows

**Repair of Windows, Doors
& Glass Unit Replacement**

T: 01579 641228

M: 07533 387368



PENSILVA GARDENER

**20 years experience in Garden
and Countryside skills.**

All garden work undertaken.

**Call Chris on 01579 383047
or 07792 936413**



KV Accounting Solutions



Local Accountant offering fixed fee accounting services

With over 20 years experience, I am a fully qualified, friendly, local accountant

- ✓ Annual Accounts for Sole Traders and Partnerships
- ✓ Book Keeping & Payroll
- ✓ Personal Tax Planning
- ✓ Company Accounts
- ✓ Business Support & Advice

- ✓ Self Assessment tax returns
- ✓ iXBRL tax filing
- ✓ Tax investigation Fees Insurance
- ✓ Company Secretarial work
- ✓ Tax calculations for Sole Traders and Partnerships

Kate Vaughnley FCCA - Chartered Certified Accountant

Website : www.kvaccountingsolutions.co.uk or Email : katevaughnley@gmail.com
Telephone : 01579 364083



LPG AND MAINS GAS ENGINEER

COMBI BOILER INSTALLATION

LONG WARRANTIES FREE QUOTES

BOILER SERVICE & REPAIRS

RADIATORS

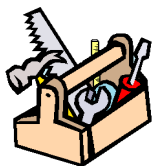
07859848288

bagasservices@outlook.com



KEEP IT TIDY

General Property Maintenance
including Decorating, plus Electrical



**HONEST PRICE
for
QUALITY WORK.**



No Job Too Small

Kit Rickard

18 Higher Glen Park
Pensilva

Phone: 01579 363378

Mobile: 07855 699071

Email: KITKeepItTidy@hotmail.com



FOR ALL YOUR CELEBRATION NEEDS

Visit our shop: 12 Fore Street, Callington

Call us on 01579 384386

Find us on Facebook or visit our website:

www.victoriaeyton.co.uk

- Helium Balloons - Balloon Arches -
- Bespoke Balloon Designs -
- Personalised Balloons - Partyware -
- Huge selection of greetings cards -
- **Weddings, Parties and Corporate events catered for.**

DOG GROOMING

40 YEARS EXPERIENCE



**SMALL and MEDIUM Dogs
Groomed to Your Request**

**LISKEARD AREA
Inquiries Welcome**

Call Patricia: 07517 658862

34 TO YOU OR TO ME



Domestic Electrical
Property Maintenance
Interior & Exterior Work
Carpentry :: Decking
Kitchens :: Bathrooms
Wall & Floor Tiling
General Plumbing

MCCARTHY PROPERTY MAINTENANCE

**Electrical Safety
Register** incorporating
ELECTSA  ECA
Certification Ltd

**HIGHLY REGARDED LOCAL BUILDER
COMPETITIVELY PRICED
COVERING THE SOUTH WEST**

Contact Dominic

07968 599 675

01579 362 945

info@mccarthypropertymaintenance.co.uk

www.mccarthypropertymaintenance.co.uk

be inspired
with
Slimming World®

CONTACT HAYLEY

07966 370233

The Pensilva Group meets in
Millennium House on
Mondays at 10:00am, 5:30pm
and 7:30pm .

A Wednesday morning group
meets at 09:30am in the
Sports club, Liskeard



slimmingworld.co.uk



DO YOU NEED A HELPING HAND?

Reliable, friendly,
experienced, mature
local resident offering
the following services:

Cleaning Ironing

Shopping Light Gardening Dog Walking



CRB/DBS checked and fully insured. Competitive rates.

Contact Jess: Telephone or text: 07934 764 327.

Email: homeangel77@yahoo.com. Find us on Facebook





GENERAL GARDEN & HOUSE MAINTENANCE

NO JOB TOO SMALL

Call to discuss your requirements.
NO OBLIGATION quotes given.

One off jobs or regular work catered for.

Here are some examples...

OUTSIDE

MOWING

HEDGE CUTTING

FENCE PAINTING

BOARDER WEEDING

PATIOS & DRIVES

CLEANED

INSIDE

WINDOWS CLEANED
INSIDE & OUT.

PAINTING

CLEANING

SHOPPING

IRONING

CALL ANDREW CARLIN
now on:

07407 323888

Thank you.



Affordable Counselling

Caring, confidential,
non-judgemental

- Increased confidence and self esteem
- Help to cope better at difficult times
- Improved relationships
- Clarify confused thoughts & feelings
- Assertiveness
- Personal insight
- Improved emotional health
- Available for youth and adults

Isabelle McGarahan BA, PGCE
Dip in Therapeutic Counselling,
Accredited ACC, DBS cleared
www.im-counselling.org email:
isabelle@im-counselling.org
01579 344090/07857326229



P BRADLEY PLUMBING & HEATING

Email: info@pbplumbingheating.co.uk

Web: www.pbplumbingheating.co.uk

Facebook: @PDBradleyPlumbingandHeating

NO JOB TOO BIG OR SMALL

24hr Emergency Call Out

Based in Liskeard

Call Today 07598956760

"The complete bathroom installation service"

**New bathrooms fitted,
floor and wall tiling specialist**

General Plumbing including:

- Bathroom makeovers
- Dripping taps and burst pipes
- Pump and cylinder changes
- Radiator upgrades and additions
- Specialist in Leadwork
- No job too small
- No Call out charge



W. Hale
Plumbing

Friendly Service, Quality Work

NO VAT

**City and Guilds Qualified
established 1983**

Call William Hale on

Tel: 01579 362132 Mobile: 07826 699719



FLO GAS

**LPG Bottled Gas
Patio, BBQ & Camping Gas
Kiln Dried Firewood
Coal & Smokeless Fuel
Eco Heatlogs
No Contracts
FREE DELIVERY**



01208 816827

**sales@loganslogs.com
www.loganslogs.com**

AIR PRODUCTS
Cylinder Gas Agent

- Commercial Gases
- Welding & Cutting Gases
- Food & Drink Gases
- Balloon Gases



The Treatment Barn

2 Briston Orchard, St Mellion, PL12 6RQ

www.thetreatmentbarn.co.uk

www.facebook.com/thetreatmentbarnstmellion

Treatments include:

Animal Communication & Healing,
Bowen Therapy, Child Psychology,
Colour Therapy, Crystal Therapy,
Crystal readings/insights, Ear Candle Therapy,
Functional Nutrition, Hypnotherapy,
Wide Range of Massage Therapy,
Reflexology, Reiki

Training, including:

Crystal Therapy - various levels
Reiki Therapy - all levels

Call **01579 351568** for more information



MARK FITCH CHIMNEY SWEEP

- * BRUSH & VACUUM
- * CLEAN, RELIABLE SERVICE
- * COVERING ALL S.E. CORNWALL
- * DISCOUNT FOR MULTIPLE CHIMNEYS
- * COWLS & GUARDS FITTED
- * STOVES SERVICED



*Call
Mark on:*

**01579 350762
07773 462643**



QUALIFIED RAYNOR MASSAGE THERAPIST

RELAXING AND THERAPEUTIC MASSAGE TREATMENTS

Effective for many different types of chronic pain, sports injury, stress and tension related problems



CBD massage now available

APPOINTMENTS AVAILABLE AT

LISKEARD THERAPY CENTRE
LISKEARD PL14 3JB

THE WELLBEING CENTRE
LISKEARD PL14 6AT

Contact : Tina North
Phone : 07720 832322

Website : massage-therapy-cornwall.co.uk



R J Gardening & Handyman Services

All aspects of gardening and handyman work undertaken.

- ~Local and Trustworthy
- ~Hard Working
- ~Reliable and Experienced
- ~No job too small
- ~Competitive rates

Contact Raymond on:

07541 229064 or 01579 347622

raymond_pearcegb@yahoo.com

Find us on Facebook.





R&C
GROUNDWORKS
& LANDSCAPES



Fencing
Paths & Steps
Turf & Astro turf
Driveways
Retaining walls
Digger work
Footings & foundations

Patios
Rendering
Decking

And more

Free no obligation quotes

Call Rob on:

**07518246666 or
01579 641802**

Window Cleaner

Also any upvc cleaned

i.e. fascias, gutters, etc.

gutters cleared & unblocked

Please phone Rob

07709 053464

Window Cleaner

Save Costly Energy!



SOLARTEC Windows &
Conservatories Ltd

**'A' Rated WINDOWS & DOORS
at BEST PRICES EVER!**



Professionally fitted and finished by us with a
10 year ins. guarantee.
In all colours

FENSA
REGISTERED

NEW

**FACTORY SHOP
SUPPLY ONLY**

For all your windows, doors, conservatories,
fascia, trims, guttering and sealants

**7-10 DAY TURN AROUND ON WINDOWS,
DOORS and CONSERVATORIES**

TEL: 01579 343425

FAX: 01579 344500

WEBSITE: www.solartecwindows.co.uk

EMAIL: sales@solartecwindows.co.uk

KEEPING JOBS IN CORNWALL



PJR Garden Services

Phil Rule

**All aspects of garden
work - grass / hedge
cutting, patios, fencing
etc.**

Mobile 07387 449004

Tom Marshall

TM Plastering

Plasterer and Property Care

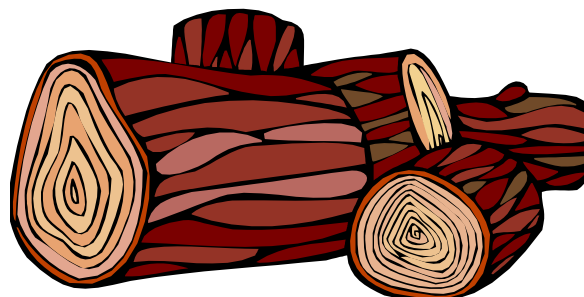
07544819284

Tommarshallcornwall@gmail.com

Free estimates

- Internal plastering
- Internal / external rendering
- Damp proofing
- Stud Walls
- Patio laying
- Chimney repairs
- Pointing
- Painting

SEASONED LOGS



MIXED LOAD

or

HARDWOOD

Tel. Jonathan

Mobile 07966 070725

or

01579 363157

Heel **2** Toe Footcare

Tired Aching feet.

Corns, Hard skin, Verruca.

Fungal infected toe nails, or
toe nails require cutting.

Diabetic feet also treated and
regularly checked.

I can help to keep your feet
looking and feeling good.

I am a trained Foot Health
Practitioner to Diploma Level, fully
insured & DBS checked.

I can do home visits via an
appointment.

Call Penny: **07459 060709** for
further information

ADVERTISE HERE!

This box for **just £7.50**
per month including VAT.

10% discount for a 12
month order = **£5.63 +**
VAT per month.

See full tariff on page 3

One thousand copies per
month distributed free of
charge to households in
the Parish of St Ives.

Alphaplas Limited t/a
Trims&Windows

www.trimsandwindows.co.uk

Double Glazed uPVC
Windows-Doors-Conservatories
'Conservation' vertical sliders a speciality



Supply only to Trade & DIY or
Full installation registered with

FENSA inc
10yr insurance backed guarantee



Email: alphaplas@btconnect.com

01752 840078

Installation team based in
Pensilva, Looe & Torpoint

Group Travel

Enterprise Park, Midway Road,
Bodmin, Cornwall

PL31 2FQ

Tel: 01208 77989



BODMIN M.O.T. CENTRE at Group Travel

Class 4, 5 and 7. Trade enquiries available upon request. Tel: 01208 77989

COACH EXCURSIONS & TOURS

| | | | |
|----------|---|-----------|-----------------------------------|
| 28th MAR | TELEGRAPH MUSEUM PORTHCURNO | 2nd MAY | TOBY'S GARDEN FESTIVAL |
| 3rd APR | KENT CAVERN, TORQUAY | 9th MAY | BADMINTON HORSE TRIALS |
| 10th APR | CHER TRIBUTE IN EXMOUTH | 28th MAY | EXMOUTH—TORQUAY/BRIXHAM CRUISE |
| 17th APR | EXETER RACES & '80 MUSIC NIGHT | 3rd JUNE | AGATHA CHRISTIE'S GREENWAY HOUSE |
| 20th APR | EDINBURGH & DURHAM TOUR (7 days & 6 nights) | 13th JUNE | FALMOUTH INT SEA SHANTY & REGATTA |
| 26th APR | PAR MARKET | 28th SEP | KENT TOUR (5 days & 4 nights) |

16 TO 70 SEAT COACHES AVAILABLE FOR PRIVATE HIRE. CORPORATE/ VIP, EVENTS & CONFERENCES, WEDDINGS (CAN INCLUDE STAG & HEN PARTY PACKAGE), HOLIDAY TRANSFERS, FUNERALS, DAYS OUT, GROUP TOURS, GOLFING HOLIDAYS & SPORTING EVENTS.

FOR BOOKINGS AND A BROCHURE PLEASE CALL
01208 77989 / 01208 72669

Website: grouptravelcoachhire.com Email: grouptravelcomwall@btconnect.com

Martin Hoare – Local, Reliable, Competitive



WHEEL DIGGER FOR HIRE
ALSO AVAILABE 'BREAKER'
AND NEW CONCRETE
'CRUSHER BUCKET'

ALL AT COMPETITIVE RATES

GROUND WORKS
DRAINAGE
NEW DRIVEWAYS
SEPTIC TANKS &
'SOAK AWAYS' INSTALLED



LASER LEVEL FOR HIRE
QUOTES AVAILABLE



Phone 01579 363517

or

Mob 07863 291213





INDEPENDENT FUNERAL DIRECTORS

Supporting families to arrange funerals with dignity, compassion and care.

Cremation, with full service, at Glynn Valley, Bodmin from £3060

Unattended direct cremation from £2323

Traditional burial, inclusive of church service from £2866

Green burial at Pentiddy, Pensilva from £3018

Prepayment Funeral Plans available

Prices correct as at July 2019. For detailed breakdown of costs, visit our website



01579 362358 | www.fdhallfunerals.co.uk



Avalennek, Caradon Town,
Upton Cross, Liskeard
Cornwall PL14 5AR
Telephone 01579 363598
Mobile 07901 538132
chrisrounsevell@tiscali.co.uk

HOG ROAST EQUIPMENT HIRE AND MEAT SUPPLY

Hog Roasts For Those Special Occasions
Self Catering or Hassle Free Service
Everything done to your special requirements

CHRIS ROUNSEVELL
TRADITIONAL BUTCHER

Come and visit our recently updated
Tile & Bathroom showroom in PENSILVA

We offer a generous discount to all Pump Readers

Unit 24 Pensilva Ind Est, St Ive Road, Cornwall PL14 5RE 01579 362264

CORNWALL TILE
CENTRE

Pensilva Showroom

| | | |
|------|-----------|--------------|
| Open | Mon - Fri | 8.30am - 5pm |
| | Saturday | 9.00am - 1pm |

Tiles & Mosaics for:

Bathrooms & Kitchens Living Areas Conservatories
Patios & External Areas Wet Rooms & Spas Swimming Pools
& All Commercial Applications

 **atlas concorde**

www.cornwalltile.com

OPEN FOR RETAIL, TRADE & COMMERCIAL ENQUIRIES



The RACEHORSE INN



Gastro Pub

Head Chef Phillip Bradshaw

Ray and Flori welcome you to
the Racehorse INN

A fine food experience in a convivial
atmosphere

Our superb Sunday lunch is one to be tried

Open Every Day for Lunch and Dinner

info@racehorseinn.co.uk
www.racehorseinn.co.uk

Take-out: Pizzas & Fish'n'Chips now available



North Hill Village, Cornwall, PL15 7PG

01566 786 916

J. H. Simmons

Painting & Decorating



No Job Too Small

For more information
Please call John
01579 362688

7 East Park, Pensilva

D.J.A. BUILDING SERVICES

ALL ASPECTS OF PROPERTY
MAINTENANCE BUILDING &
REFURBISHMENT

- * Bespoke Furniture and Kitchens
- * Wardrobes and Bookcases
- * Garden Sheds, Poultry Houses & Small Animal Shelters
- * Over 30 years' experience
- * Fully insured
- * References available
- * Free estimates
- * No VAT

**Call David on 01579
364050 / 07767662635**

Westwood Garden Maintenance



Antony Watts

Grass Cutting, Clearance

Weeding, Turfing

Hedge Cutting

Patio Cleaning, Planting

Regular Visits / One-off Contracts

Residential & Commercial

FREE ESTIMATES

01579 362019 www.westwoodgm.co.uk 07952 094472



THE HOME OF WOOD

BULK DISCOUNTS AVAILABLE ON OUR 30 YEAR SERVICE LIFE POSTS



OUR GOLD TREATED STAKES AND POSTS ARE THE ONLY ONES AVAILABLE IN THE UK THAT ARE APPROVED BY THE WPA BENCHMARK FOR 30 YEAR SERVICE LIFE

For more information please contact one of our team



Bond Timber, Bake Sawmill, Trerulefoot, Saltash, Cornwall,

PL12 5BW

01503 240 308 stacy@whbond.co.uk

Pensilva Stores

Amazing Value

Premier
a great deal more from your local store
Mon-Sat. 7:00 AM. – 9:30 PM.
Sunday 8:00 AM. – 9:30 PM.

- ✓ Fantastic Special Offers every month!!! (See store leaflets)
- ✓ Come and Check out our great deals on Wine, Beer and Spirits
- ✓ Local Produce: Homemade Butter and Clotted Cream, Meat from our local butcher
- ✓ Cornish Fresh Fruit and Vegetables
- ✓ Fresh Bread, Pasties and Cakes
- ✓ Take Away Coffee, tea and hot chocolate
- ✓ Newspapers and Magazines, Greeting Cards
- ✓ Paypoint, Lottery

*** Free to use ATM ***

*** Card Payment ***

Friendly Staff + Service with a Smile !!!

Pensilva Stores is a family run business who have been serving local people and visitors for more than 21 years.

Higher Road, Pensilva, Liskeard, Cornwall PL14 5NQ

Tel: 01579 362547

MENDOLOGY

Garage Door Specialist

- ☐ Repairs
- ☐ Servicing
- ☐ Installations


Out of hours service
call Dave anytime 07974 442645

MENDOLOGY COMMERCIAL DOORS LTD
www.mendologydoors.co.uk

01579 363760

PensilvaCars

01579 363516

- ✓ MOTs Class 4
- ✓ Service
- ✓ Repair
- ✓ Tyres
- ✓ FREE Courtesy Car
- ✓ Car & Van Sales
- ✓ Diagnostics
- ✓ Air Conditioning
- ✓ 

We have offered a supply, fit & balance of tyre service for 10 years at competitive prices.

Most of our tyres can be supplied the same day.

LOCAL RECOVERY £45.00

www.pensilvacars.co.uk

pensilvacars@hotmail.co.uk

We can service and repair your car to manufacturer specification, keeping your dealer warranty without main dealer expense.





KEITH RICHARDS

Motor Body Repair Specialists

A family run business with fully equipped & maintained workshops & a focus on
Customer Care

- ♦ Motor Body Repair Specialist
- ♦ Mechanical Repairs
- ♦ Servicing to All Makes & Models
- ♦ Computer 4 Wheel Alignment
- ♦ 24 Hour Recovery Service
- ♦ Renovations & Re-sprays
- ♦ Member of RMI (Retail Motor Industry Federation)
- ♦ Latest Diagnostics (including specialists for VW, Audi, Seat,
Skoda & Vauxhall)

With over 30 years' experience we aim to provide you with:- Value for Money -
Friendly Service - Professional Approach - Expert Advice that you Can Trust
(Visit our website for more details)

Pensilva Industrial Estate, St Ive Road, Pensilva, Liskeard, Cornwall PL14 5RE

Tel: 01579 362593

Email: keith@keithrichardsmotorbody.co.uk

Fax: 01579 363194

Website: www.keithrichardsmotorbody.co.uk

Wm. Newham & Sons Est. 1835

Proprietor Robbie Savill AWCB

CHIMNEY SWEEPS & BLACKSMITHS



CHIMNEY SWEEPING

BIRD GUARDS, COWLS & POTS FITTED

CCTV INSPECTIONS & SURVEYS

STACK REPAIRS & REBUILDS

RIGID STEEL SYSTEMS ERECTED

**STAINLESS STEEL and PUMPED CONCRETE
CHIMNEY LINING**

STOVES SUPPLIED, INSTALLED & REPAIRED

FIREPLACE ALTERATIONS & RENOVATIONS

FULL RANGE OF FIREPLACE FURNITURE
made to order

01579 347777

**need somewhere to stay ?
between homes ?
family/friends visiting ?**



**ideal for Pensilva
& St.Ive**

**please call Jackie on
01579 362216**

J. J. Child

Plumbing and heating engineer.

Oil appliance service, repair and breakdowns.

Over 30 years experience

Call John: 01579 362336 or 07837 921086



Bargain Corner Free Ads up to £50

Ads are free for items up to £50. £5 charge for items over £50. Please ring the Parish Office on **01579 363096** or leave a note at Millennium House reception or email **parishpump@btconnect.com**.

*****Please let us know when your item has sold*****

Canon IP2700 **Printer. £20**
Computer screen 19" £20.
Epson Perfection v350 **Scanner Photo £20**
Sony Revia 42" **TV. £45.**
All in working order. **01579 363200**

Cross stitch work frame and stand, folds away into canvas carry case, no need to remove work. Cost £50 new. Offers in the region of **£15.**
Remington **foot spa**, very little used, with some oils etc. **£5.**
Pensilva **01579 363521**

Ladies Reebok **bike**, white, with accessories, **£40 ono. 07770 747353**
Set of 3 **suitcases**, red, vgc, Antler, **£40 ono. 07770 747353.** Pensilva area

Car seat. Fisher Price FP2000 Safe Voyage seat used from birth. Good condition. Used about 5 times as extra seat at Nana's house. **£10.**
01579 383967 or 07933 960113 - St Ive

PANASONIC 32" **LCD TV.** Built-in Freeview. Hardly used. As New. Surplus to requirements. **£50.**
07891 849603

Toshiba **sewing machine £30.** New **pond liner 5m x 5m £30.** Five **Crittall windows 900mm x 1000mm approx.** Suitable for shed or greenhouse. **Free. 01579 363573**

Set of **Snow chains**, new and unused fit 14" to 19" rims, self adjusting. **£40**
Pensilva **01579 362207**

Approx. 2,200 **copper disc rivets for fibre cement roof slating. £10.**
5 Medium size **Kit Bags** in reasonably good condition (no cords). **£25** the five.
Set of 5 collectible **Meerkats.** VGC with certificates. **£30** the set of 5 or **£10** each.
2 large size lightweight camouflage military jackets **£5** each. **Tel 01579-384658**

Pile of old interesting newspapers (1950s King's death / coronation, 1980s hurricane / Tianamen Sq., & more) **FREE.**
Porch awning for caravan £40.
Useful size **chest of drawers** H42½" x W29½" x D15½" 5 long & 2 short drawers. Also matching **Small chest** with 3 drawers H30" x W15½" x D15". Light colour. **£22.**
Tel 01579-362643

2 x Medium Weight **Car Ramps £20.**
Push Mower £5. 01579 363199

Maximuscle **home gym system £100** ono.
Black leather **chaise longue.** Excellent condition. **£100** ono.
Scelextric Sport Le Mans set. Still in box. Great condition. **£100.**
Plastering gear: 110v paddle mix with transformer, various trowels, hawk and other bits. Good for DIY etc. **£70** ono.
Easycamp Tour Ligata **6 berth tent.** Used only 3 times. **£100** or offers.
Dark brown **leather chair. £50**
07980 380224 - Pensilva area.

Brown speckled **carpet**, 2m x 5m. Brand new (over ordered). **£50.**
Arch design **headboards. £20 each or £35 pair. 01579 362211**

What's on in St Ive Parish ?

| WHAT'S ON | WHEN | CONTACT DETAILS |
|------------------------------|--|---|
| MILLENNIUM HOUSE | | |
| Aikido | Thursday 7:00pm | |
| Antique & Collectors Fair | 4th Sunday Monthly 10:00 - 4:00 | |
| Badminton Club | Mon & Tues 7:30pm. Fr. 8.00pm | 01579 363594 (Carol & Nigel) |
| Book Exchange | Daily | 01579 363096 |
| Pensilva Breathers | Monday 12.30pm - 2.30pm | 01579 532467 Pauline |
| Country Dancing | Alternate Thursdays 8.00 - 10.00pm | 01579 382402 Ray Buckingham |
| Drawing Class | Wednesdays 09.30am - 12.30pm | 07886 343621 (Yvette Wiltshire) |
| | | |
| Ladies Netball | Friday 09.15 - 10:15am | 07985 387472 |
| Penmill Art Group | Friday 10am - 2pm | 01579 363441 |
| Pensilva Wednesday Club | Alternate Wednesdays 2:00pm | 01579 362832 Sheila |
| Pensioners Lunches | Tuesday 12:00 - 2:00pm | 01579 363096 |
| Short Mat Bowls | Thursday 7:00pm | 01579 208528 |
| Watercolour Art Class | Wednesdays 1.30pm - 4.30pm | 07886 343621 (Yvette Wiltshire) |
| Wildlife Group | Quarterly | 01579 362539 (Hilary) |
| Woman's Institute | 2nd Wed Monthly 7:15pm | 01579 362531 (Jean Hoare) |
| Yoga | Wednesday 7:00pm | 01579 344464 |
| PENSILVA VILLAGE HALL | | |
| Brownies | Monday 4:00 - 6:00pm | 01579 362239 Martha Oliver |
| Pensilva Snooker Club | Wed 7:00pm + Various times | 01579 362091 Phillip Bond |
| Guides | Thursday 6:00 - 8:00pm | 01579 363228 Caroline Hambly |
| MIMS | Friday 1.00 - 3.00pm | 01579 343702 (Chris) |
| Rainbows | Friday 4:00 - 5:00pm | 01579 362091 Lynne Bond |
| Rangers | For Info | 01579 362982 Kirsty Oliver |
| PENSILVA PRE-SCHOOL | | |
| Pensilva Pre-School | Monday-Fridays 9:00 - 3:15 (session times available) | 07890 023924 Mrs Suzanne Kinsman (Manager) |
| Tiny Tots Toddler group | Friday 9:15 - 11:15am | 07890 023924 Mrs Suzanne Kinsman (Manager) |

ST IVE INSTITUTE

| | | |
|-----------------------|---------------------------|-----------------------|
| Gardening Club | 1st Monday monthly 7:30pm | 01579 382762 |
| St Ive Snooker Club | Monday & Thursday 7:00pm | 01579 382315 R Bunkum |
| Post Office | Wednesday 10:30 - 12 noon | |
| Coffee Morning | Wednesday 10:30 - 12:00 | |
| St. Ive Singing Group | Thursday 4.00 - 5:30pm | 01579 382341 (Clare) |

St Ive Institute available for hire, £3.50 per hour. This includes the use of the kitchen & electric (excluding wall heaters, which are on a £1 coin meter)

Contact Sue Sedgewick on 01579 383291

Hall meetings will now be held quarterly on the second Tuesday of the month in January, April (includes AGM), July and October.

ST IVE & DISTRICT GARDENING ASSOCIATION

Meetings in St Ive Village Hall 1st Monday in the month at 7.30pm

Monday 2nd March 7pm Annual General Meeting . Then at

7.30pm Iain Rowe will talk to us about **Caradon Mines and Miners**

Monday 30th March A visit to **Calamazag Nursery, St Martins, Looe, PL13 1NX**
Assemble in St Ive car park to leave at 6.15 pm. Car share £1.50
Plants for sale

Visitors and new members are always welcome to join us.

St Ive Games Evenings

Board Games, Card Games and Table Tennis

The next Games Evenings will be on

Friday March 6th, at 7pm

For further details contact Maggie or Wendy on:

01579 208572

or email: **wendycarr21@gmail.com**

Pensilva Post Office

Located through the Café on the 1st floor of Millennium House



Opening times:

| | | |
|-----------|---|----------------|
| Tuesday | - | 9am to 1pm |
| Wednesday | - | 9am to 12 noon |
| Friday | - | 9am to 12 noon |

Also at St Ive Institute, Wednesdays 10:30-12 noon.

THE MEL BAR ***MILLENNIUM HOUSE*** ***Licensed Free House***

GUEST ALES - LAGERS - CIDERS - WINES - SPIRITS

Opening Hours

| | | |
|-----------|---|------------------|
| Mon - Fri | - | 5 pm to 11 pm |
| Sat / Sun | - | 12 noon to 11 pm |

01579 363096