

# THE PARISH PUMP



December 2019  
Edition 457



**The Newsletter for the Parish of St Ives**

## **CAROLS IN THE CAR PARK**



**AT 7PM ON  
WEDNESDAY 18TH  
DECEMBER  
IN ST IVE CAR  
PARK  
(BY THE PLAYGROUND)**

**COME AND SING WITH ST IVE SINGING GROUP, THEN  
ON TO ST IVE VILLAGE HALL FOR MINCE PIES AND HOT DRINKS.**

**BRING A TORCH - WORDS PROVIDED**

**IF RAINING, MEET AT ST IVE VILLAGE HALL**

**IF YOU'D LIKE TO BRING A BOTTLE & CHANGE FOR DONATIONS, PLEASE DO**

**HAPPY CHRISTMAS EVERYBODY!**

## Disclaimer

The articles appearing in this magazine do not necessarily reflect the views of the Parish Council nor of the Parish Pump Editor.

## Parish Councillors Telephone List

Peter Haimes (chair)	01579 362459	Alan Moss (vice-chair)	01579 362064
James Bruce	07411 192645	Marlene Carr	01579 362919
Martin Corney	01579 382450	Angie Haimes	01579 362459
Rosemary Farley	01579 384810	Tony Hodson	07973 536964
Nigel Libby	07968 891814	Kath Parkes	01579 362005
Ivor Vaughan	07979 934604	Craig Vaughnley	01579 364083
Samantha Reilly	via Parish Office 01579 363096		
Sharon Daw (Cornwall Councillor) 07837 379305 slash.dash.daw@gmail.com			

## Meetings of St Ive Parish Council

**2nd Monday monthly:** Parish Council Meeting, alternating between St Ive Village Hall and Millennium House (please refer to notice boards for the agenda showing start time and venue each month). Any changes to the regular dates (i.e. Bank Holidays etc.) will be publicised accordingly.

**4th Tuesday Monthly:** Parish Council Planning Committee Meeting, 7 pm at Millennium House Pensilva, followed by the Parish Council Finance & Administration Committee Meeting commencing at 7.30 in the same venue.

## Date of Next Parish Council Meeting

**Monday 9th December, 2019**



**Devon & Cornwall Police**  
Building safer communities together



**101**

Minicom 18001 101

## Police Community Neighbourhood Office

Your Community Support Officer is PCSO Steve Edser 30173.

email: CIOsnbmliskeard@devonandcornwall.pnn.police.uk

To report a crime call 101 or go to [www.devon-cornwall.police.uk](http://www.devon-cornwall.police.uk)

In an emergency call 999

## Contact details for St. Ives Parish Council and for Millennium House

Address for correspondence: Millennium House, Century Square, Pensilva PL14 5NF

General Parish matters should be raised initially with the Parish Clerk, Jenny Hoskin, who will present them to the Parish Council.

Telephone: 01579 363096, email: [stiveparish@btconnect.com](mailto:stiveparish@btconnect.com)

For accounts matters for the Parish and for Millennium House contact John Body, Finance Officer: 01579 362102, email: [millenniumhouseadmin@btconnect.com](mailto:millenniumhouseadmin@btconnect.com)

Millennium House enquiries and reservations: 01579 363096

email: [millenniumhouse@btconnect.com](mailto:millenniumhouse@btconnect.com).

On the web: Millennium House Website: [www.cornwallvenue.com](http://www.cornwallvenue.com)

Parish website: [st-ive-parishcouncil.gov.uk](http://st-ive-parishcouncil.gov.uk) Facebook: [facebook.com/stiveparishcouncil](https://facebook.com/stiveparishcouncil)

## Parish Pump Information and Contact Details

To contact the editor please email: [parishpump@btconnect.com](mailto:parishpump@btconnect.com)

or phone the Parish office: **01579 363096**.

Hardcopy submissions by post or by hand to the Parish office, Millennium House.

Softcopy submissions: By email to the editor in MS Word, MS Publisher, pdf, Tiff or jpeg. Please use A4 pages and minimum 16 point font as the Pump is initially produced in A4 size and reduced to an A5 booklet at the printing stage. If in doubt please contact the editor.

**Current Advertising Prices** including VAT at 20%

Per issue:      Quarter Page £7.50      Half Page £15.00      Full Page £25.00

10% discount for 12 months paid in advance.

Bargain Corner free ads by email to the editor or drop off at the Parish Office.

**Deadline for the Parish Pump is STRICTLY 15th of every month**

## THE MEL BAR

Relax and wind down  
at the Mel Bar, Millennium House



## From the Editor

It's like the proverbial London buses: you wait all year for a Christmas Carol concert or service and then six come along at once. Actually there could be a reason for that, but anyway, in the interests of fairness, you can find a complete list, here, of ALL the carol events taking place in St Ives Parish between the election and Christmas. If you like singing carols you're going to be busy!

12th 11am at St Ives Church - Gorfenna annual Carol service

15th 11am at St John's Pensilva - Carol Service (with communion)

15th 3pm at St Ives Methodist Chapel - Cornish language carols

18th 7pm at St Ives, Carols in the Car Park (see front cover)

22nd 5pm at St Ives Methodist Chapel - Christingle and Carols

24th 6pm at St John's, Pensilva - Christingle and Carols

I hope I haven't missed any! There are also lots and lots of other things going on during the festive season, for all ages and all tastes, so have a good look through this month's bumper edition! The one that caught my attention was the Blue Christmas event at St John's (pg. 37), for those that don't find Christmas a joyful occasion; how thoughtful! Don't forget to register your interest for the parish council's children's and seniors parties at Millennium House. Talk to your friends and get a group together!

Finally, don't miss some hints on reducing waste at Xmas, plus the latest instalment of the Climate Emergency series on the centre pages (31-33).

I hope you all have a wonderful time this Christmas. Joe.

## Millennium House Opening Hours

### Reception

9am till 2.30pm Monday to Friday

If no-one is available please leave a message in our **letter box** at the front of the building or on our answer phone by calling **01579 363096**.

### Community Coffee Shop

Please see separate notice on the next page

### Bar

5pm till 11pm Monday to Friday

12am till 11pm Saturday and Sunday

**Christmas: Dec 24, 4pm-11pm. Dec 25, noon-2pm. Dec 26, noon-11pm.**

**New Year's Eve: 5pm to 2am. New Year's Day 3pm to 10pm.**

# *COMMUNITY COFFEE SHOP*

## *MILLENNIUM HOUSE, PENSILVA*

### **OPENING HOURS**

<b>Monday</b>	<b>10.a.m. to 1.p.m.</b>
<b>Tuesday</b>	<b>9.a.m. to 1.p.m.</b>
<b>Wednesday</b>	<b>9.a.m. to 1.p.m.</b>
<b>Thursday</b>	<b>9.a.m. to 1.p.m.</b>
<b>Friday</b>	<b>9.a.m. to 1.p.m.</b>

**Open to small groups (pre booked) for Cream Teas - Buffet - Lunch Bites**

The Coffee Shop is run by volunteers who aim to offer a cheery, relaxed atmosphere for you to sit and enjoy a cuppa. We adapt our service in response to feedback from members of the public, whose support we rely on to continue. We would like to offer our sincere thanks for your support of the Coffee Shop.

### **CHAIRMAN'S COLUMN**

Well it's December already, where has the year gone? Elsewhere in the Pump are details of dates and times of Christmas parties and the Christmas dinner for Pensioners, so don't forget to put your name down if you want to attend any of them. With the weather getting colder and the days getting very short, I would ask you all to look out for elderly neighbours. Please just drop in and see that they are OK and if they need anything, (shopping or prescriptions picking up etc) see if you can help. If you can't please let someone at Millennium House know and we will try to help.

Many roads around the Parish are very slippery with fallen leaves and possibly ice soon. So please **slow down and keep a good look out for pedestrians walking in the dark**. Let's not have any accidents in the holiday season.

While on the subject of Christmas, why not buy a set of lights for your child's bike? (Not very exciting perhaps, but it may save a trip to casualty, or maybe worse!!). Even Santa has a reindeer with a red nose, so he can be seen.

It only leaves me now, on behalf of the Parish Council, to wish you all a

**MERRY CHRISTMAS AND A HAPPY NEW YEAR**

Pete Haimes

From a Parish resident, concerning plastic items left on the Moor.

Dear Editor

I wonder if you could point out the problems of pollution on Foredown and the adjoining area on Caradon Hill. The issue of plastic and its degradation into micro-plastic elements, which end up in our oceans, is well documented. Another problem concerns drinks bottles and cans; the sugar deposits in these attract small mammals that get trapped inside and die a lingering death.

Also, dog owners leave plastic dog-poo bags on the moor. Far better to leave the droppings on the ground, where they will eventually nourish the soil, obviously after moving them away from areas where people walk, so as not to contaminate footwear.

I have approached our Parish Council about providing dustbins in the parking areas, but Foredown and Caradon Hill are outside of their jurisdiction, in St Cleer Parish.

**Nikki Welch**, special Olympian from Pensilva, recently won 3 gold medals at the regional badminton event held in Wrexham, and a further 3 gold medals playing for England in the Welsh four-nation badminton challenge in Cardiff, without losing any games. Nikki has now won a total of 34 gold, 13 silver and 2 bronze medals since she started playing in 2014.

Nikki practises at Millennium House, Pensilva, and trains at the Better Leisure Centre in Liskeard with the Liskeard Junior badminton club, on Monday evenings, with the Special Olympic coaches. She then continues playing in the pay and play session afterwards. Nikki also plays on Wednesdays in the Better Leisure Centre with the Mental Health & Wellbeing Session in association with Rethink, then continues in the pay & play session afterward. Thanks must go to Tammy Haines for supporting Nikki with her activities in the Better Leisure Centre, to Nikki's coaches Nigel, Claire and Jess from Liskeard Junior Badminton Club, and to GLL Sport Foundation who sponsor Nikki with Better Leisure Centre membership.

Nikki would also like to thank everyone that sponsored her when she completed the 10 mile "Tor to Tor Tour" trek, climbing Rough Tor, Brown Willy and finishing at Jamaica Inn, supported by Claire and Alan Reed. Nikki raised £209.50 which will help pay towards the Special Olympic 2021 National games entry in Liverpool.



## Pensilva WI November Report

Living in an area renowned for mining, it was interesting to the ladies of Pensilva WI when Colin Buck came to tell us more about industrial mining in the locality. He showed us pictures of maps of the area from 1833 to the 1990's which clearly outlined the mines, shafts and lodes and also told us that Pensilva was relatively 'modern' and was known as Bodminland previously. President Jean Hoare warmly thanked Colin for coming along and telling us all about our village's history.

Dates for your diary:

Christmas lunch, Eliot House Hotel, Sunday 15<sup>th</sup> December

Mavis Phelp, Janthia Luter and Lorna Truscott all celebrated birthdays this month.

Competitions: Flower of the month, 1<sup>st</sup> Mary Y, 2<sup>nd</sup> Verna Dawe, 3<sup>rd</sup> Maureen Walker. Precious gem, 1<sup>st</sup> Verna Dawe, 2<sup>nd</sup> Jill Pascoe, 3<sup>rd</sup> Mary Y

December meeting is our Christmas party, friends and family welcome.

The Committee and members of Pensilva WI wish everybody a very Merry Christmas and a Happy New Year.

## Film Club

I think it's fair to say that "you could hear a pin drop" at the end of October's movie - Journey's End - a superb, highly emotive film following just 4 days in the life of a WW1 battalion. This powerful movie focussed on the emotional and psychological pressure of being in a front-line trench in the days leading up to a German attack. The audience was transported to the trench and began to understand just how it must have been to undergo duty there. I think that "to a man" we were all shell-shocked into silence—a very thought-provoking way to kick off the Remembrance weekend.

To lighten the mood our next movie on Friday 13 December will be The Greatest Showman. If you have seen this film at home on the small screen I would recommend coming along to experience it in a bigger way. As usual Hugh Jackman puts in an excellent performance and I'm sure we will all enjoy the music, much of which has become very well known to us following the general release of the film last year. See you there.

## **Supporting Guiding & Scouting Activities in Pensilva 200 CLUB Draw Results for September 2019**

<b>1st No. 86 Mrs K Snowdon</b>	<b>2nd No. 110 Mrs S Webb</b>	<b>3rd No. 164 Mrs D Solomon</b>
-------------------------------------	-----------------------------------	--------------------------------------

**Thank you for your support**

## **A Christmas message from Rev Becca Bell**

Christmas is coming! The vicar is getting unreasonably tired and busy but she loves it!! There's cake to make, presents to buy (actually I've bought most because I really don't stand a chance in December!) and decorations to put up. Then there are treats with the family to arrange and time to meet friends to book in. I love it!

But there is also something about Christmas that can make us feeling like things are scarce: Christmas feels expensive and so money is scarce. Christmas can be busy so time feels scarce. Christmas can highlight our sense of loss where loved ones are no longer with us so joy can feel scarce. We all know it shouldn't be this way, but most of us struggle to keep our priorities healthy at Christmas, and life doesn't stop being hard just because it's December.

In recent years I've been aware of a narrative that "Christmas is about love, and peace, and being together". It's not surprising that people have moved away from including Jesus; there seems to be a huge misunderstanding around what Jesus being born is all about! But the clue is in the title and Christmas is unashamedly about Jesus Christ. It may well have been slapped onto a pagan festival (Yule) and we may not really have any clear idea when Jesus was born, but as we celebrate Christmas today, we are celebrating God wrapping himself in human flesh and being born as a refugee child to a teenaged mum in ambiguous circumstances. God gave himself wholly and completely to humanity with all the risk and scandal that being human entails.

I love our beautiful crib scenes and school nativities, but let's not ignore the reality that our scenes represent; the risk of child birth in an animal shed, far from family and support, while genocide threatened, as Herod heard that a "baby king" had been born.

God poured himself out with abundant generosity because that is the base line of living that God has for us all. God is generous; he gave his son, gave us this world, gave us life, gives us love, and gives us each other. And God made us to be generous. It is when our fear of scarcity causes us to gather our time, resources, and relationships to ourselves that we begin to tiptoe into greed and selfishness and lose sight of how God created us to be. And I think that is what we are so often guilty of at Christmas: In our attempt to create a perfect Christmas or lovely memories or even just to celebrate without being open handed we lose sight completely of the generous and joyful heart that reached out to us in that baby born to reconnect humanity with the Almighty God.

So bake with joy, sing with gusto, drink (with responsibility!) and give with open hearts and hands (from what you have, not what you don't have!)? And do it all because God first loved us. God loves us so much he was born as that vulnerable human baby in an occupied country with an uncertain future. Keep generosity of time, self, money, home, and heart at the centre of all you do and celebrate and look at the story of Christ's birth as the greatest act of generosity in history. Even when we rejected God, and decided that we could manage on our own, that was when God came to us as one of us.



## **St Ive and District Gardening Association**

Last Monday night Chris Jones introduced us to Trevor. Trevor was wearing a thick coat which when touched felt surprisingly soft and silky. Trevor is a beaver. There followed an interesting talk about beavers and how they could contribute to flood control all over the country as they are in fact now doing in Ladock where Chris has a family of beavers on his farm. Chris's beavers and their effect on the area are being scientifically monitored and it seems the benefits outweigh the disadvantages. The idea that beavers could to some extent balance the effects of climate change certainly gives food for thought.

Next month, on 2<sup>nd</sup> December, we are back to thinking about our gardens when Shaun Poland will tell us how to make our gardens attractive to butterflies. We will also be taking bookings for our annual lunch which will be held on 11<sup>th</sup> January at the Cheesewring Hotel. Meetings are held at 7.30pm in St Ive village hall. Visitors always welcome.

### **Attention Parish Groups who advertise free of charge in the Pump!**

In the last couple of months, I have had more contributions than I could easily fit in the newsletter. In November we went to 64 pages for the first time that I know of, and this month I was up to 69 pages at one point before I shrunk and whittled to get it down to last month's record of 64 pages.

I fear that I will have to ask voluntary groups etc, who do not pay for their advertising of regular, well-known and well-established events, to limit their entries to a quarter page under normal circumstances. Some of you may find that your item has already miraculously shrunk: others may be hearing from me soon! I hope you will all understand the reason why. Thanks. Joe (editor).

## **TRADITIONAL STONE SERVICES**

**CLASSIC & TIMELESS STONE MASONRY AND LETTERING**

**MEMORIAL CLEANING**

**COMMISSIONS TAKEN**

**01579 363693 OR 07507 782282**

## Festivals and Celebrations in Daymer Class.

This half term, Daymer class have been learning about different Festivals of Light, so far Halloween, Bonfire Night and Diwali.

We have had fun with lots of sensory activities, such as feeling the insides of a pumpkin and creating revolting witch's potions with porridge oats, glitter, different coloured water and lots of creepy crawlies! From this, the children were inspired to write fabulous potion recipes & spells.

For Bonfire Night, we used our senses to taste toffee apples, smell and see sparklers and listen to fireworks going BANG! This activity helped the children think of describing words to create a class poem. Alongside this, they played with a small world bonfire & fire engine and pretended to be firefighters, making up their own fire rescue stories. They have also created fabulous fireworks paintings using lots of glitter and paint.

For Diwali, the Hindu Festival of Light, the children have enjoyed lots of activities and learnt the story of Rama and Sita. We noticed Diwali has many similarities to some Christian celebrations, especially Christmas.

The children made beautiful Rangoli patterns using collage materials, Mehendi henna tattoos on paper hands and clay Diva lamps.

We hope you enjoy the pictures of the fun things we have been doing!





## October has been a busy month at Merryhue Farm.



Our students and staff have all been making scarecrows as a fun way to learn about Health & Safety, with some of the scarecrows experiencing nasty “accidents”. The competition got quite heated, and with none of the management team wanting to pick a winner it was down to the Deputy Lord Lieutenant of Devon, Sir Andrew Ridgway to make the decision – and here is the winner! (left)

On Wednesday 30<sup>th</sup> Merryhue Farm hosted approximately 80 children from Stoke Climsland and Quethiock primary schools for a Remembrance Day event. The children and their teachers were undeterred by the wet weather and had a fantastic day learning about the armed forces and why Remembrance Day is important in our community. Activities included meeting the animals, exploring a replica WW1 trench and WW2 Anderson shelter, making poppies and badges, dressing up, a pop-up museum, building shelters in the woods and tasting trench food cooked on our field kitchen!



The day ended with everyone getting together for a short silence, broken by staff reading the names of local people who died in WW1 and WW2.

If you would like your primary school to take part in this FREE activity day next year, please get in touch: Phone 01579 384798 or Email [helena@transferableskillstraining.com](mailto:helena@transferableskillstraining.com)





On 4<sup>th</sup> of December **Simon Francis**, Wellbeing Lead at Nuffield Health, will advise us on how we can all live longer and achieve a better quality of life. This may interest anyone who has suffered serious illness.

Our first meeting next year will be on 5<sup>th</sup> February and we are in the process of finalising the details which will be published next month.

Remember, our meetings are open to anyone with prostate cancer and their family and friends and start at 6:30pm at the Callington Health Centre. They are free to attend and with tea/coffee provided.

For more information please contact:

Chris Greensted on 01822 834797 or email [tapsinfo555@gmail.com](mailto:tapsinfo555@gmail.com)

Meanwhile we wish everyone a very Merry Christmas and Happy New Year.

### NEWS FROM PENSILVA GUIDING

After 30 years Guiding, working as a team, weekly meetings and taking units away on pack holidays, canal holidays and Guide camp, Jackie, Lynne and Martha wish to retire. The fun and camaraderie has been brilliant we have made friends with other Guiders in Cornwall, Britain and the world. We would like four new leaders two for Brownies and two for Rainbows. There is training from Cornwall Girlguiding and we are willing to help with the transition to new leaders. The times and days of unit meetings can be changed to suit the new leaders. Anyone who is interested please contact Jackie by email at [jackiepensilva@gmail.com](mailto:jackiepensilva@gmail.com)

## **JP's Fresh Hot Food**

### **at the Millennium House Bar, Pensilva**

Every Friday and Saturday evening 5pm-9pm ish

Now open Sundays 3pm-8pm for homemade pizzas, potato wedges & burgers only.

Friday film night 8th Nov, open 3-7pm  
(order by 6.30pm), then 9.45pm onwards.

All our food is  
top quality,  
fresh & locally  
-sourced!

Vegetarian  
options ✓

Food allergies  
catered for ✓

**Takeaway or eat in! 07966 994585**

## CHRISTMAS PARTIES AT MILLENNIUM HOUSE

### Children's Party

The Parish Council would like to invite the Children of the parish to the annual Bouncy Castle Christmas Party on **Saturday 21<sup>st</sup> December, 3 – 5pm**. Please contact the Parish Clerk to register your Child's attendance by Friday 13<sup>th</sup> December. Children must be accompanied by a parent.

### Senior Party

The Senior Members of the parish are invited to attend a full three course Christmas Lunch with entertainment, served by members of the Parish Council on **Tuesday 17<sup>th</sup> December** at 1pm, for the reduced fee of £5. Please contact the Parish Clerk to register your interest by Friday 13<sup>th</sup> December.

**Parish Clerk contact details: 01579 363069**

**stiveparish@btconnect.com**

**Ruth and Colleen's Monthly**

**BINGO**

**At Millennium House**

**on Tuesday December 3rd**

**Eyes down at 7:30pm**

**Over 18's only**

**£££ CASH PRIZES £££**



Pensilva Community Association and C-Fylm Present

# PENSILVA FILM CLUB

**FRIDAY DEC 13th**

AND EVERY SECOND FRIDAY OF THE MONTH AFTER THAT!

**DOORS OPEN 7PM, FILM STARTS 7:30PM**

**£2.50**  
for C-Fylm  
members\*

JOIN FOR FREE ON  
THE DOOR



Growing up in the early 1800s, P.T. Barnum displays a natural talent for publicity and promotion, selling lottery tickets by age 12. After trying his hands at various jobs, P.T. turns to show business to indulge his limitless imagination, rising from nothing to create the Barnum & Bailey circus. Featuring catchy musical numbers, exotic performers and daring acrobatic feats, Barnum's mesmerizing spectacle soon takes the world by storm to become the greatest show on Earth.

# **Jacket Potato and Dessert Lunch**

**St John's Church Pensilva**

**Saturday 14th December**

**12 noon to 2 pm**

**Suggested donation £5**

## **QUIZZES AT MILLENNIUM HOUSE**

**OUR NEXT QUIZ IS ON**

**SATURDAY DECEMBER 14, 7:30PM**

**Organised by and raising funds for**

***All Being Well***

**Improving the health of our community**





MILLENNIUM HOUSE EVENTS GROUP  
PRESENTS

**CRIMBO**  
**BINGO**

GREAT CHANCES TO WIN!

---

**EYES DOWN 7:30PM**  
**MONDAY, DECEMBER 16TH 2019**  
**@ MILLENNIUM HOUSE**

---

**St Ive Church**  
*Is Pleased to Present*  
**Johnny Cowling**  
**Christmas Special**

*on*

**Sunday 15<sup>th</sup> December 7pm**

**Tickets £10**

**To include a pasty supper**

**Tickets available from:**

**Pat 362959, Brian 364010, Dennis 383054**

**Christingle**

**Tuesday 24<sup>th</sup> December**

**6.00 pm**

**St John's Church**

**Pensilva**

**Come and join the celebration**







*Millennium  
House Events  
Presents*

# *Christmas Mingle*

**24TH DECEMBER 4-6PM FREE ENTRY**  
**COME ALONG AND MEET YOUR NEIGHBOURS,**  
**MULLED WINE AND MINCE PIES BEING**  
**SERVED.**



**MILLENNIUM HOUSE**

# **GREASE**

***New Year's Eve  
Family Disco  
and light buffet***

**7.30PM TILL LATE**

**£10 ADULTS / £5 CHILDREN (2-16)**

**TICKETS IN ADVANCE ONLY**

**CONTACT KAREN 362196**

**ONLY DRINKS PURCHASED ON PREMISES TO BE CONSUMED**

## **Pantomime Time Again**

for the over 60's.

**Liskeard Lions present.**

## **MOTHER GOOSE**

**Friday 24<sup>th</sup> January, The Public Hall, Liskeard.**

A bus will pick up from **Glen Park**, the **Shop**, and **The Cross, Pensilva**, at **6.00 pm**, and from **St Ive Village Car Park** at **6.15 pm**.

To book please ring: Ivor & Jean Hoare on 362531  
by the 18<sup>th</sup> January.

**Free to senior citizens.**



## **VOLUNTEER DAYS AT PENTIDDY**

Your chance to get involved in looking after your  
Community woodland

**Sunday 26th January & Sunday 23rd February 10am-3pm**

A fun and rewarding way to give a little back to a local community project at a time when caring for woodlands has never been so important. It's a great way to meet new people, learn new skills, enjoy the woods and have fun!

Drinks, soup, bread & cake provided. Come along and bring family & friends. Those that come along and help get a share of some of the timber (once we have put aside the few loads for sale to raise funds for the years' insurance.) Accompanied children (and dogs on leads) very welcome! Bring hand tools and work gloves if you have them i.e. loppers, bill-hooks & bow saws. We will have a small supply available.

No experience necessary. Training given. Work to suit all abilities and ages. Share some good company, wholesome, productive work and delicious food! Please contact us if you'd like to come (so we know how much cake to make!) Ele and Anthony Waters: 01579 363775 or 07765 103504



## PENSILVA WEDNESDAY CLUB RVS

Meet in Pensilva Village Hall at 2.30pm on alternate Wednesdays

All adults welcome to join - Refreshments - various activities

Entertainment - Coach Trips - Raffle etc...

We to have a coach trip to Truro on November 27th so why not join us  
for perhaps last-minute Christmas shopping.

Contact Jane Mann on 01579 362960 for details

## Art Classes *with Yvette*

Millennium Centre, Pensilva.

*If you have always wanted to Sketch or Paint 'Why Wait'??*

*Come and Join one of my classes, they are fully structured,  
suitable for both beginners and improvers.*

*Kick start your hobby in a 'friendly and relaxed' atmosphere, aimed at 'enjoyment'.*

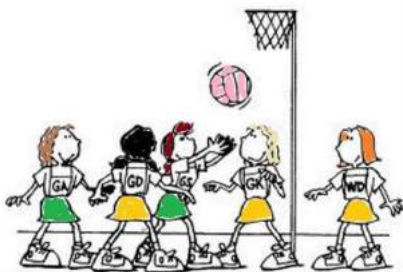
**Drawing Class - Wednesday Mornings 9.30am to 12.30pm**

**Watercolour Art Class - Wednesday Afternoon 1.30 to 4.30pm**

*Other Classes & One day workshops or demonstrations also available.*

*Contact Yvette on 07886 343621 or*

*email: yvettewiltshire@sky.com website: www.artwithyvette.com*



**Ever tried...**

## **Walking Netball?**

**Come along to Millennium House, Pensilva  
Every Thursday 4.45-5.45pm - £2 per session**

**Info from [rosemaryfarley@gmail.com](mailto:rosemaryfarley@gmail.com) or**

**Irene Elliott 01579362069**



# LISKERRETT

## NURSERY AND PRESCHOOL

WE WELCOME CHILDREN FROM 12 MONTHS TO 5 YEARS

*Located in the heart of Liskeard, we have been established for over 30 years and embrace an outdoor-based learning ethos to provide high quality care and education.*



- SPACIOUS, SECURE INDOOR AND OUTDOOR AREAS
- FREE PARKING PERMITS AVAILABLE
- VERY REASONABLE FEES
- 8:45AM - 3PM, EXTENDED HOURS BY REQUEST
- GOVERNMENT FUNDING ACCEPTED



Advert  
sponsored  
by

**R&C**  
GROUNDWORKS  
& LANDSCAPES

CALL: 01579 346194 OR EMAIL: [ADMIN@LISKERRETPRESCHOOL.CO.UK](mailto:ADMIN@LISKERRETPRESCHOOL.CO.UK)





# VICTORIA INN



Takeaway menu available. English, Chinese & Indian food, plus various bottles of alcohol & soft drinks. Available Tues - Sun from 5.30. Free delivery Fri/Sat on orders > £10. Meal deals also available: details to follow.

**Bookings now being taken for Christmas Day Lunch and Party Bookings. Party bookings can be lunch or evenings. Please contact Wendy for more details.**

**Check out our new menu including “Healthy options.”**

**LIVE MUSIC EVERY MONTH**



**CALL – 01579 363933**



Opening Hours

Monday			5pm to 11pm
Tuesday			5pm to 11pm
Wednesday	12pm to 3pm &		5pm to 11pm
Thursday			5pm to 11pm
Friday	9.30am	to	11pm
Sat/Sun	12pm	to	11pm

**Free Pool on Mondays**



**NO EXPERIENCE NEEDED. ALL WELCOME**

PLEASE CONTACT CLARE 01579 382341

**OR EMAIL:** [CONTACT@CLARENORRISH.COM](mailto:CONTACT@CLARENORRISH.COM)

WEBSITE: [clarenorrish.com](http://clarenorrish.com)

**EVERY THURSDAY 4-5.30PM, ST IVE VILLAGE HALL**  
FROM POP TO CORNISH SONGS. WE ONLY SING IT IF IT'S FUN!

### **Pensilva Country Dance Club**

We are a small, friendly group that meets once a fortnight in Millennium House, Thursdays, 7.30pm to 9.30pm. If you would like to join us to try country dancing, we would give you a warm welcome. No previous experience needed!

For more information ring Jill 362819 or Liz 340942.



### **Tropic Skincare**

I am an ambassador for this amazing ethical company.

All products are natural, containing Plants, Fruits, Flowers or their derivatives, including essential oils.

As well as placing your made to order products, as your ambassador, I help you to host a Pamper Experience with family and friends, or give a free 1 to 1 consultation including mini facial.

Contact: Toni Styles Phone: 07745394245

Email: [tonisty@aol.com](mailto:tonisty@aol.com)

[www.tropicskincare.com/tonistyles](http://www.tropicskincare.com/tonistyles)



### **Debbie Hicks - Counselling and Psychotherapy**

*Caring, confidential counselling for all.*

*I work in a therapeutic relationship to help you understand yourself better.*

*I offer a warm, approachable, relaxed environment for you to untangle your thoughts and emotions.*

*More info on my website or by contacting me.*

**[www.debbiehickscounselling.co.uk](http://www.debbiehickscounselling.co.uk)**

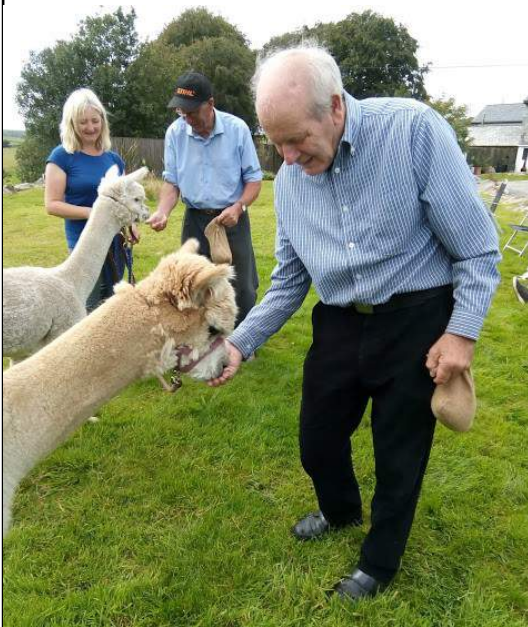
**Email: [debbiehicks10@gmail.com](mailto:debbiehicks10@gmail.com)**

**07851 133782**



## **MEMORY PROBLEMS?**

If you have memory problems, whether mild, moderate or severe, you can feel a bit isolated or lonely. If you care for someone with this problem, we know how hard it can be. Our Café offers the opportunity for you to relax for a couple of hours now and then.



We have a varied programme throughout the year with some interesting speakers, musicians, crafts, games and occasional outings. You would be very welcome to come and join us for some reminiscences, music, fun and laughter.

### **PENSILVA MEMORY CAFÉ**

Social activities and refreshments in a friendly and informal setting. We'd love to see you. We meet on the 4th Thursday of each month at St John's Church from 2pm to 4pm. Tea/coffee and cakes always provided.

Free entry but donations of £1 per person are much appreciated.

For more info phone Pat 01579 363461 or Carolyn 01579 362698

**A big thank you to the Lions of Liskeard** who recently very kindly donated a cheque for £200 to help us to continue running the Cafe and arranging outings and activities.

## **Pensioners Lunch**

**2 Course Meal plus Tea or Coffee  
Only £6.00**

**Every Tuesday here at Millennium House  
Speak to our reception or  
telephone Millennium House on 01579 363096**



**So why not join us for Good  
Food and Good Company, all on  
the day you collect your  
pension?**

## **MOBILE LIBRARY**

The County Mobile Library visits our area once a month on Fridays of "Week 3" (NOTE: not necessarily the 3rd Friday of the month).

**Next visits: 20th Dec. 17th Jan.**



**Stops at:**

**The Victoria Inn, Pensilva, 10.25- 10.45am;  
Quethiock bus stop. 11.00 to 11.20am.**

**07460 476619**



**openarms@uymail.com**

**OpenArms Fitness and Massage**

### **Purestretch flexibility and core classes**

Gentle group exercise classes to increase general mobility, flexibility and core strength. I am able to tailor the class to your own specific needs, ensuring it is achievable for all.

**Classes at : Pensilva Millennium Centre, 10am on Tuesdays  
and Menheniot Parish Hall, 10am on Wednesdays,**

**Other therapies: Warm Bamboo Massage and Sports Massage.  
Please call or email for details.**



**SEW, KNIT AND NATTER.**

**WHY NOT JOIN US ON**

**THE LAST TUESDAY OF EACH MONTH**

**for sewing, knitting or just for a chat and a  
cup of tea or coffee and cake.**

**We meet at ST JOHN'S CHURCH, PENSILVA from 2pm to 4pm.**



# Wesley Online Centre

## Computers, Internet & Support - FREE!

### Opening Times:

Tuesday: 7-9pm

Wednesday: 10am-1pm

Friday: 2-5pm;

Saturday: 10am-12pm

PC access and advice in a friendly and supportive setting.



### For Everyone:

Whether you're a complete computer novice and would like to learn some basics, want access and information to help with JobSearch or UC, the WOC is here to support you with it's PC suite – all for free!

**Liskeard Methodist Church, Barn Street, Liskeard PL14 4BL**

For more info: call 01579 276877 or email [online@liskeardmethodist.org.uk](mailto:online@liskeardmethodist.org.uk)



**£350 ono**

Range on full charge on flat ground 21 km/16miles max  
Turning radius 122cm / 4x230mm  
Solid tyres  
Max. speed 6.4km/h / 4mph  
Complete with basket/arm rests/  
Manual / adjustable seat  
Can be dismantled for transport  
Buyer collects  
Tel: **07765 492 416**

## Heel 2 Toe Footcare

Tired Aching feet.

Corns, Hard skin, Verruca.

Fungal infected toe nails, or  
toe nails require cutting.

Diabetic feet also treated and  
regularly checked.

I can help to keep your feet  
looking and feeling good.

I am a trained Foot Health  
Practitioner to Diploma Level, fully  
insured & DBS checked.

I can do home visits via an  
appointment.

Call Penny: **07459 060709** for  
further information

# ***Badminton?***

Come and join our relaxed and friendly group at Pensilva Millennium House

**Mon & Tue 7.30 - 9.30pm**

**Friday 8.00 - 10.00pm**

**For further info phone**

**Nigel or Carol on**

**01579 363594 or**

**07885 798370**

# ***All Being Well***

Your local, friendly gym.

Over 18 years working in our local community to improve health, fitness and well being.

Call **01579 363890**, drop in at Millennium House, Pensilva, or email [abwgym@gmail.com](mailto:abwgym@gmail.com)

## Opening hours:

Mon/Fri 10am-3pm & 5pm-9pm

Wed 10am to 3pm

Tues/Thur 9am to 1pm

Saturday 10am to 1pm

**Ask about GP exercise referrals!**

# ***PENMILL ART GROUP***

We are a small, friendly group using all art mediums. If you paint we would love you to join us.

We meet at Millennium House

**10-2 every Friday.**

Please come & see us or phone Pam on

**01579 363441.**

# ***Face Yoga***

**Now at Millennium House, Pensilva**



**Mondays 10:30am**

Get a more youthful look  
with facial exercises, relaxation,  
massage with essential oils,  
facial acupressure.  
A feeling of Well Being

## PENSILVA VILLAGE HALL

Anyone wishing to book the hall for meetings, birthday parties or fundraisers please contact Peter or Jackie

Browning on **01579 363212** or email **peterpensilva@gmail.com**



Please note that as well as hall rent there is a coin meter for heating at 60p/hr.

We hold a Hall a users and committee meeting on the fourth Monday of every 2nd month starting in January at 7.00pm. Please feel free to come along and support us.

### Organisations that meet in Pensilva Village Hall

Meeting Times	Organisation	Contact Person	Telephone
Mon. 4:00 - 6:00	Brownies	Mrs Martha Oliver	01579 362239
Alternate Wed. 2:30 - 4:00	Wednesday Club	Mrs Jean Conner	01579 363221
Wed. 7:00 & various	Snooker Club	Mr Philip Bond	01579 362091
Thu. 6:00 - 8:00	Guides	Miss Caroline Hambly	01579 363228
Fri. 1:00 - 3:00	MIMS	Chris	01579 343702
Fri. 4:00 - 5:00	Rainbows	Mrs Lynne Bond	01579 362091

### St Ive Institute & Village Hall

Every Wednesday	10:30am to 12 noon 10:30am to 11:30am	Coffee morning Travelling Post Office
First Monday	7:30pm	St Ive Gardening Club
Every Monday & Thursday	7:00pm	St Ive Snooker Club



# Debbie's Care Services Recruitment Agency

## Tel. 0777 948 3230

Hello, my name is Debbie. I am a local lady who has been working in the community for over 30 years. I run a Care Recruitment Service placing fully trained carers into community care roles.

We provide the following services and more!

- Assisting bathing / showering
- Preparation of meals
- Cleaning / Shopping / Ironing
- Companionship / Friendship and emotional support
- Assisting with mobility
- Day, Evening and Night Care



Registered

*Supported by  
local Doctors*



**Started by PATIENTS Run by PATIENTS For the PATIENTS**  
with COPD and long term conditions

**Are you living with COPD or another long term lung condition?**

Why not join our friendly group for company, light exercise & support?

We meet upstairs in Millennium House, Pensilva, Mondays 12.30 - 2.30

First week FREE. Thereafter £3 per week. Refreshments provided.

*If you would like more information please call us*

**Pauline: 01579 532467**

**Jeanette: 01579 363691**

## **Ideas from Cornwall Council To Reduce Your Waste This Christmas**

### **1. Reduce food waste**

Does anyone in your family actually like sprouts? Be honest. Rather than bin them, don't buy them. You won't be arrested by the Christmas Police. Christmas is not an apocalypse scenario – resist the urge to stockpile in case of 'emergencies'. Rather than over-buying food then binning it, plan your meals, make a list, stick to it, exercise portion control, plate, cover and use your leftovers (e.g. brilliantly British bubble and squeak).

### **2. Give experiences not things**

Does your loved one really need more stuff? Are you buying something for the sake of it? Make memories not more waste by giving experiences and your time instead: a meal out, an ice skating trip, a theatre visit, a day at an amusement park, pottery making or a gym membership.

### **3. Be proud to buy second hand at Christmas**

By going second hand, you're not going second rate. Charity shops are bulging with high quality toys, stocking fillers, second-hand clothes and even tech gadgets. You're not just saving money, you're helping to save the planet, supporting the charity and helping protect Cornwall's unique natural environment too.

### **4. Cut down the plastic**

From old-fashioned gifts like Lego, to the latest tech gadgets, glossy gift wrap & sticky tape to tinsel on the tree - plastic is everywhere at Xmas. You can resist that glittery roll of wrapping. Use charity shop fabric or a scarf, decorate some brown paper, use newspaper, paper bags, old calendars or maps instead.

Forego that plastic novelty gift that will go in the bin come 1 January. Choose the wooden toy over the plastic tat. Buy from a bricks-and-mortar store rather than online so you can refuse the plastic wrapping at the till. When replacing Christmas decorations, go for natural ones.

### **5. Recycle**

Cornwall Council collect Christmas trees for composting. The service is free but you do need to book. See their website to register.

You can recycle non-shiny wrapping paper that's not coated with foil or plastic by putting it out for kerbside collection in your paper recycling bag. Please remove any sticky tape, string or ribbons. Check you wrapping is recyclable by scrunching it in your hand. If it stays crunched we can recycle it, if it unfolds we can't.

Lastly, how about giving a battery charger & some rechargeable batteries as a Christmas present for all your electrical toys and technical gadgets!

## What Does a Climate Emergency Mean? Page 1 of 2

The now widely used term 'Climate Emergency' has been coined largely due to the 2014 and 2018 IPCC reports mentioned in last month's Parish Pump article. They clearly identified that real urgency was required to achieve 'net zero' CO<sub>2</sub> levels by 2050.

(Extinction Rebellion is pushing for 2025; Cornwall Council & St Ives Parish Council opted for 2030; the UK Committee on Climate Change and the UK government for 2050).

'Net zero' CO<sub>2</sub> means the amount of CO<sub>2</sub> released into the atmosphere is equal to the amount absorbed by human activity, plants and animals. Currently humans do next to nothing to absorb CO<sub>2</sub> (we are relying on plants to do most of that) so the main task is to massively reduce the amount of CO<sub>2</sub> humanity produces.

Why CO<sub>2</sub>? The 3 gases produced by human activity primarily responsible for global warming are carbon dioxide, methane & nitrous oxide. These and a few others are referred to as greenhouse gases (GHGs) and CO<sub>2</sub> is the most abundant at about 78%.

Human activity produces GHGs primarily through the burning of fossil fuels (oil, coal and gas). The following are the main contributors to GHG production globally:

**Heating** (responsible for about 25% of global GHG emissions). Includes any building that requires heating using fossil fuels. Also electricity for heating if not generated from renewable sources such as wind and solar.

**Industry** (~21%). Manufacturing processes where one material is mined or made and turned into another material, requires energy. Many chemical processes also emit GHGs. Roughly two-thirds of the UK's industrial carbon emissions come from the manufacture of cement, ceramics, chemicals, food & drink, glass, iron & steel, oil refining, pulp and paper. The finger has also been pointed at the fashion industry for its high GHG emissions, high product turnover and low reuse. Food production involves the manufacture of fertiliser, pesticides, herbicides & animal feeds, as well as food processing and the manufacture of food packaging (plastic being the worst).

**Agriculture/Farming/Other Land Use** (~24%). Methane and nitrous oxide from fertiliser and manure breakdown and methane from livestock (mainly ruminants farting and burping!). A third factor is massive deforestation to create farm land, especially for palm oil, including manmade forest and grassland fires.

**Transport** (~14%). Cars, vans, trucks, buses, trains, planes, ships, tractors & plant almost all need fossil fuels, as do daily commuting, transport of food and other products, holidays and business travel. All of these produce GHGs unless powered by renewable sources of energy such as wind and solar. (Doesn't include bicycles!)

**Buildings** (~6.4%). Electricity for homes, offices, consumer electronics & lighting if not generated from renewable sources. GHG emissions from fridges, aerosols, etc.

**Other** (~9.6%). Includes waste management and treatment, e.g. landfill, sewage, waste incineration and other smaller contributors.

As you can see, GHG emissions are produced everywhere, deeply embedded in the lives we lead. How much is released is completely dependent on the choices we make about

what and how much we individually buy and do. That also means population size is a key factor in the volume of GHG emissions.

The IPCC says we are currently on a trajectory to increase mean global temperature by 3.7°C to 4.8°C by the end of the century and that in order to minimise the effects of climate change we must limit temperature rise to 1.5°C by 2050. The science says a rise of 1.5°C will be bad enough: 3.7°C to 4.8°C would be catastrophic.

The rising temperature will mean increasingly more extreme weather events as the climate gets hotter and wetter, e.g. more frequent and more severe droughts, heat waves, floods, storms, hurricanes, dust storms and wildfires. Our news media are already reporting it. All parts of the globe are at risk, especially the poles and equator. According to the Met Office, the top ten warmest years for the UK since 1884 have occurred since 2002, with the highest summer temperature on record in July this year. They also say both summers and winters are getting wetter. They predict that, if things stay as they are, by 2070 average UK temperatures will increase by between 0.9 °C and 5.4 °C in summer and between 0.7 °C and 4.2 °C in winter. Also, average rainfall may change by -47% to +2% in summer and -1% to +35% in winter.

What other effects could this have on the global human population? More frequent crop failures leading to food shortages and higher prices. Large population migrations due to drought, famine and war. Increased damage to buildings and other infrastructure. Spread of disease carrying organisms and pests as they increase their habitat range, affecting human, animal and crop health in new areas.

What about our planet's plants and animals? IPCC says a 1.5°C average rise would put 20-30% of species at risk of extinction. If the planet warms by more than 2°C, the extinctions will be higher and most ecosystems will struggle. Some plants and animals have already been observed to change their habitat range due to climate change.

The IPCC say a 1.5 °C target is achievable but only if we make rapid and unprecedented changes in all aspects of our society. That means drastic changes in our use of energy, land, transport, buildings & industrial systems leading to deep GHG emission reductions in all of the above sectors. We need to think & behave very differently.

Even doing that, the IPCC has said that many aspects of climate change and its associated impacts will continue for centuries. Our children, grandchildren and several generations beyond will have to cope with the impacts and the rising costs they imply. The IPCC reports make it very clear that we are not doing nearly enough on a personal, business or community level, nor at local and governmental level, to ensure the net zero CO<sub>2</sub> emission target is met. Will the parties we vote for this month do enough?

Want to help our parish work towards achieving carbon neutrality by 2030? Contact the St Ives Parish Climate Action Group by emailing [pmwiscombe@hotmail.com](mailto:pmwiscombe@hotmail.com)

Feedback. Let us know what you think of the climate change items we have been putting into the Pump this year, good or bad. Please use the email above.

In the next Parish Pump: Things you can do to reduce your carbon footprint.

## **PENSILVA HEALTH CENTRE - PATIENT PARTICIPATION GROUP**

We are a group of patients who meet regularly with the Health Centre to bring forward for discussion ideas, comments and suggestions about your surgery. In the past we have held open days, helped at the flu clinics and participated in a trial People's Commissioning Board Project.

We also organise a Carer's and bereavement group (see below) and a 'Walking for Health' group

**(Contact Marlene Carr 362919 ).**

You can contact us directly or through the Health Centre.

## **PENSILVA HEALTH CENTRE CARERS AND BEREAVEMENT GROUP**

**Are you a carer, bereaved or lonely? Then come along and join our Group. Tea, Coffee and plenty of friendly chat and, when possible, local trips to various venues.**

**Meetings are held every third Thursday of each month at 11.30.a.m.  
Meet in Millennium House car park.**

**For any information please contact Jean Connor 01579 363221**



## **Struggling with Sight Loss?**

iSight Cornwall offers practical help to people living with sight loss in Cornwall including:

Low Vision: Advice for low vision aids

Assistive Technology: Advice on products

Benefits Advice: Assistance to claim entitlements

Equipment Demonstration: Advice on gadgets

Social Clubs & Activities: Links to clubs & activities in the county

For more details Telephone 01872 261110 or visit

[www.isightcornwall.org.uk](http://www.isightcornwall.org.uk)

# **St Ive Methodist Chapel**

## ***Services for December 2019***

<b>Sun 1st Dec</b>	11.15 am -	United Service at St Ive Parish Church No evening service
<b>Sun 8th Dec</b>	11 am 6pm	Mrs Margaret Halls-Falconer Green Shoots Carol Service at Bealbury Chapel, led by Rev. Jonathan Budd
<b>Sun 15th Dec</b>	11.15 am 3pm 6.30pm	United Service at St Ive Parish Church Cornish Language Carol Service United Contemporary Service at Callington MC. Mrs Geraldine Parkyn.
<b>Sun 22nd Dec</b>	11am 5pm	No Morning Service Christingle & Carol Service with Mr Geoff Williams. Mince Pies to follow.
<b>Christmas Day</b>	9.30am	Christmas Celebration with Alan Libby. All welcome.
<b>Sun 29th Dec</b>	11am	Rev Iris Bray

The Chattermakers craft group will meet on Thurs. 11th Dec, in the Guildroom from 7.30pm. This is a group open to anyone who likes to do craft and would like to share with others of a like mind (hence the 'Chatter'!). Details from Kathryn on 01579 382334. All welcome.

The Village Church Prayer meeting will also be held at St Ive Chapel on Thurs. 4th & 18th Dec, from 7:30pm. All welcome.

Reminder of our Nativity Scene exhibition on Fri. 3rd Jan & Sat. 4th Jan, 10am-12pm & 2-4pm, and Sun. 5th Jan 3-5pm, finishing with Carol Singing in the Chapel. All welcome. (Also, if anyone has a Nativity Scene that they would like to loan for this event, please contact Keith or Kathryn on 01579 382334.

# St Ive Church

## Services

Dec 1st	Morning Worship	11.15am
Dec 8th	Service at Chapel	11am
Dec 12th	Gorfenna Annual Carol Service	11am
	Everyone welcome. Please come and enjoy	
Dec 15th	Holy Communion	11:15am
Dec 22nd	Chapel Christingle Carol Service	5pm
Dec 24th	Christmas Eve Holy Communion	9pm
Dec 29th	Together at ten at <b>Merrymeet</b>	10am

---

## Other December Events

### **Fri 6th      Produce Market and Bric-a-brac 10:30am**

Home made cakes etc, fresh vegetables, locally made pasties, pickles, jams and much more. Farm fresh meat from Trehill Farm Produce.

### **Sun 8th      Christmas Lunch in Church 12.45pm** All welcome.

### **Sun 15th    Johnny Cowling Christmas Special 7pm**

Tickets £10 includes a pasty supper from: Pat 362959, Brian 364010, Dennis 383054.

Priest in Charge      Revd Becca Bell **07899 363458**      revbeccabell@gmail.com

Church Wardens      Brian Dwelly      **01579 364010**      btdwelly@aol.com

Richard Connell **01579 363833**

Donations for Food Bank can be left in the Church each day between 10am and 4pm.

## **Alford Joinery - For all your joinery needs**

**Specialists in bespoke doors, windows, staircases, conservatories, etc.**

- 20 years experience
  - Large or small jobs
  - All joinery hand-crafted
  - Top quality FSC certified timbers
  - All joinery can be fitted if required.
- 01208 873444 or 07757 666460**  
**info@alfordjoinery.com**  
**www.alfordjoinery.com**



# ST JOHN'S CHURCH, PENSILVA

## Services for December 2019

*Anglicans and Methodists share services at 11 am each Sunday, coffee served before service*

Sunday 1st	11am	Rev Sue Hill, Holy Communion
Sunday 8th	11am	Café Church
Sunday 15th	11 am	<b>Carol Service</b> Rev. Martin Sellix. Holy Communion
Sunday 22nd	11 am	Mr Geoff Cox
Sunday 29th	<b>10am</b>	United Cluster Service at Merrymeet

**Café Style Church** at 10am each Thursday (not Boxing Day) followed by coffee, discussion & chat. Everyone very welcome. **The church is open daily** 10am to 4pm for private prayer or meditation or just a cup of tea or coffee.

**No Afternoon Tea** in December

**Christmas Memory Café** Thu 12th 2-4pm with Carols by Pensilva School Choir.

**Jacket Potato & Desert Lunch** Sat 14th noon-2pm in the church. All very welcome.

**Blue Christmas** Tue 17th at 2pm (for those who don't find Christmas joyful).

**Christingle Service** for all the family. Tue 17th at 6pm.

**Prayer Group:** Fri 6th at 2pm. Please ring Eileen on 362580 or Carolyn on 362698 if you would like prayer for yourself or someone else.

*For further details of the Services held in St John's, if you know of any illness or need in the village or if you would like your wedding or baptism in the church, please ring: Geoff Cox, 362698 or Frances Tucker, 363718.*



**Collection point  
open every day,  
10am to 4pm in St  
John's Church,  
Pensilva.**

# **ADVERTISE HERE!**

This box for **just £15 per month** incl. VAT.

**10% discount** for a 12 month order.

i.e. **£11.25 + VAT** per month for 12 months

See the full tariff on page 3

**One thousand copies per month**

distributed free of charge to households in  
the Parish of St Ive.



**PENSILVA GARDENER**

**20 years experience in Garden  
and Countryside skills.**

**All garden work undertaken.**

**Call Chris on 01579 383047  
or 07792 936413**



KV Accounting Solutions



## Local Accountant offering fixed fee accounting services

With over 20 years experience, I am a fully qualified, friendly, local accountant

- ✓ Annual Accounts for Sole Traders and Partnerships
- ✓ Book Keeping & Payroll
- ✓ Personal Tax Planning
- ✓ Company Accounts
- ✓ Business Support & Advice

- ✓ Self Assessment tax returns
- ✓ iXBRL tax filing
- ✓ Tax investigation Fees Insurance
- ✓ Company Secretarial work
- ✓ Tax calculations for Sole Traders and Partnerships

Kate Vaughnley FCCA - Chartered Certified Accountant

Website : [www.kvaccountingsolutions.co.uk](http://www.kvaccountingsolutions.co.uk) or Email : [katevaughnley@gmail.com](mailto:katevaughnley@gmail.com)  
Telephone : 01579 364083



## COMBI BOILER INSTALLATION

LONG WARRANTIES FREE QUOTES

BOILER SERVICE & REPAIRS

RADIATORS

**07859848288**

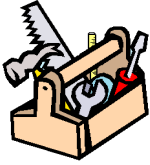
[bagasservices@outlook.com](mailto:bagasservices@outlook.com)





# KEEP IT TIDY

General Property Maintenance  
including Decorating, plus Electrical



**HONEST PRICE  
for  
QUALITY WORK.**



**No Job Too Small**

**Kit Rickard**

18 Higher Glen Park  
Pensilva

**Phone:** 01579 363378

**Mobile:** 07855 699071

**Email:** [KITKeepItTidy@hotmail.com](mailto:KITKeepItTidy@hotmail.com)



**FOR ALL YOUR CELEBRATION NEEDS**

Visit our shop: 12 Fore Street, Callington

Call us on 01579 384386

Find us on Facebook or visit our website:

**[www.victoriaeyton.co.uk](http://www.victoriaeyton.co.uk)**

- Helium Balloons - Balloon Arches -
- Bespoke Balloon Designs -
- Personalised Balloons - Partyware -
- Huge selection of greetings cards -
- **Weddings, Parties and Corporate events catered for.**

## DOG GROOMING

**40 YEARS EXPERIENCE**



**SMALL and MEDIUM Dogs  
Groomed to Your Request**

**LISKEARD AREA  
Inquiries Welcome**

**Call Patricia: 07517 658862**

**40 TO YOU OR TO ME**



Domestic Electrical  
Property Maintenance  
Interior & Exterior Work  
Carpentry :: Decking  
Kitchens :: Bathrooms  
Wall & Floor Tiling  
General Plumbing

**MCCARTHY PROPERTY MAINTENANCE**

**Electrical Safety  
Register** incorporating  
ELECTSA  ECA  
Certification Ltd

**HIGHLY REGARDED LOCAL BUILDER  
COMPETITIVELY PRICED  
COVERING THE SOUTH WEST**

Contact Dominic

**07968 599 675**

**01579 362 945**

[info@mccarthypropertymaintenance.co.uk](mailto:info@mccarthypropertymaintenance.co.uk)

**[www.mccarthypropertymaintenance.co.uk](http://www.mccarthypropertymaintenance.co.uk)**





**Waxing & Tinting  
Acrylics  
Classic Lashes  
Spray Tan  
Gel Polish**



**Skinbase Microdermabrasion**

**CHRISTMAS  
SHOPPING WITH  
LOCAL SELLERS -  
5TH DECEMBER 2-  
8PM  
MULLED WINE &  
MINCE PIES,  
MINI TREATMENTS**

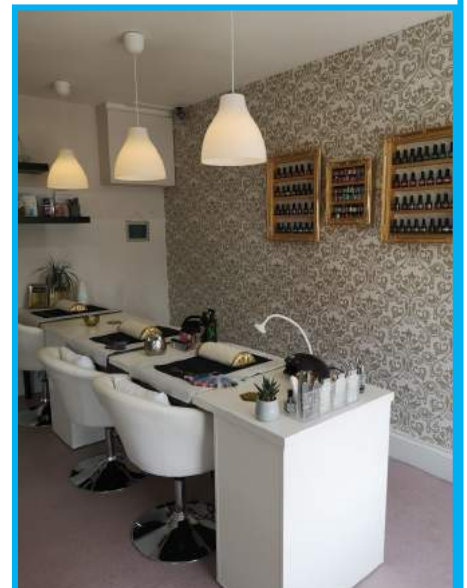
*Sculpt  
& Glow*  
BEAUTY &  
AESTHETICS

**We're at New Road,  
Callington PL17  
7BE.  
Tel: 01579 384473  
Check us out on  
Facebook &  
Instagram  
(Website under**

**Bespoke, advanced Facials**



**Fat Freezing  
Dermaplaning  
Microneedling  
Sun Shower  
& lots more!**



be inspired  
with  
Slimming World®

**CONTACT HAYLEY**

**07966 370233**

The Pensilva Group meets in Millennium House on Mondays at 10:00am, 5:30pm and 7:30pm .

A Wednesday morning group meets at 09:30am in the Sports club, Liskeard



[slimmingworld.co.uk](http://slimmingworld.co.uk)



## **DO YOU NEED A HELPING HAND?**

Reliable, friendly,  
experienced, mature  
local resident offering  
the following services:



**Cleaning     Ironing**

**Shopping     Light Gardening     Dog Walking**

CRB/DBS checked and fully insured.     Competitive rates.

**Contact Jess:** Telephone or text: 07934 764 327.

Email: [homeangel77@yahoo.com](mailto:homeangel77@yahoo.com). Find us on Facebook







# GENERAL GARDEN & HOUSE MAINTENANCE

**NO JOB TOO SMALL**

Call to discuss your requirements.  
NO OBLIGATION quotes given.

One off jobs or regular work catered for.

Here are some examples...

## OUTSIDE

MOWING

HEDGE CUTTING

FENCE PAINTING

BOARDER WEEDING

PATIOS & DRIVES

CLEANED

## INSIDE

WINDOWS CLEANED  
INSIDE & OUT.

PAINTING

CLEANING

SHOPPING

IRONING

**CALL ANDREW CARLIN**  
now on:

**07407 323888**

*Thank you.*





## Affordable Counselling

Caring, confidential,  
non-judgemental

- Increased confidence and self esteem
- Help to cope better at difficult times
- Improved relationships
- Clarify confused thoughts & feelings
- Assertiveness
- Personal insight
- Improved emotional health
- Available for youth and adults

**Isabelle McGarahan BA, PGCE**  
**Dip in Therapeutic Counselling,**  
**Accredited ACC, DBS cleared**  
**[www.im-counselling.org](http://www.im-counselling.org) email:**  
**[isabelle@im-counselling.org](mailto:isabelle@im-counselling.org)**  
**01579 344090/07857326229**



## P BRADLEY PLUMBING & HEATING

Email: [info@pbplumbingheating.co.uk](mailto:info@pbplumbingheating.co.uk)

Web: [www.pbplumbingheating.co.uk](http://www.pbplumbingheating.co.uk)

Facebook: @PDBradleyPlumbingandHeating

**NO JOB TOO BIG OR SMALL**

**24hr Emergency Call Out**

**Based in Liskeard**

**Call Today 07598956760**

## ***"The complete bathroom installation service"***

**New bathrooms fitted,  
floor and wall tiling specialist**

**General Plumbing including:**

- Bathroom makeovers
- Dripping taps and burst pipes
- Pump and cylinder changes
- Radiator upgrades and additions
- Specialist in Leadwork
- No job too small
- No Call out charge



**W. Hale**  
*Plumbing*

**Friendly Service, Quality Work**

**NO VAT**

**City and Guilds Qualified  
established 1983**

**Call William Hale on**

**Tel: 01579 362132 Mobile: 07826 699719**





**FLO GAS**

**LPG Bottled Gas  
Patio, BBQ & Camping Gas  
Kiln Dried Firewood  
Coal & Smokeless Fuel  
Eco Heatlogs  
No Contracts  
FREE DELIVERY**



**01208 816827**

**sales@loganslogs.com  
www.loganslogs.com**

**AIR PRODUCTS**  
Cylinder Gas Agent

- Commercial Gases
- Welding & Cutting Gases
- Food & Drink Gases
- Balloon Gases



## *The Treatment Barn*

2 Briston Orchard, St Mellion, PL12 6RQ

[www.thetreatmentbarn.co.uk](http://www.thetreatmentbarn.co.uk)

[www.facebook.com/thetreatmentbarnstmellion](https://www.facebook.com/thetreatmentbarnstmellion)

### **Treatments include:**

Animal Communication & Healing,  
Bowen Therapy, Child Psychology,  
Colour Therapy, Crystal Therapy,  
Crystal readings/insights, Ear Candle Therapy,  
Functional Nutrition, Hypnotherapy,  
Wide Range of Massage Therapy,  
Reflexology, Reiki

### **Training, including:**

Crystal Therapy - various levels  
Reiki Therapy - all levels  
Call **01579 351568** for more information



## **MARK FITCH CHIMNEY SWEEP**

- \* BRUSH & VACUUM
- \* CLEAN, RELIABLE SERVICE
- \* COVERING ALL S.E. CORNWALL
- \* DISCOUNT FOR MULTIPLE CHIMNEYS
- \* COWLS & GUARDS FITTED
- \* STOVES SERVICED



*Call  
Mark on:*

**01579 350762  
07773 462643**

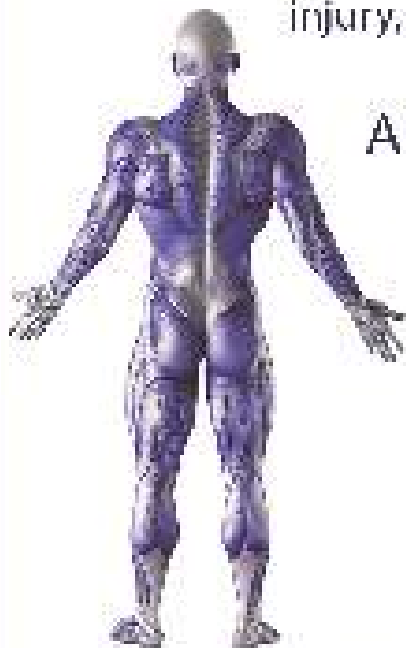




## QUALIFIED RAYNOR MASSAGE THERAPIST

RELAXING AND THERAPEUTIC DEEP TISSUE MASSAGE TREATMENTS

Effective for many different types of chronic pain, sports injury, stress and tension related problems



### APPOINTMENTS AVAILABLE AT

THE WELLBEING CENTRE  
LISKEARD 01579 344090

THE NATURAL WAY  
LISKEARD 01579 345300

Contact : Tina North  
Phone : 07720 832322

[tina-north@massage-therapy-cornwall.co.uk](mailto:tina-north@massage-therapy-cornwall.co.uk)



## R J Gardening & Handyman Services

All aspects of gardening and handyman work undertaken.

- ~Local and Trustworthy
- ~Hard Working
- ~Reliable and Experienced
- ~No job too small
- ~Competitive rates

Contact Raymond on:

07541 229064 or 01579 347622

[raymond\\_pearcegb@yahoo.com](mailto:raymond_pearcegb@yahoo.com)

Find us on Facebook.



# SCOTT BERRIDGE

Complete Property Refurbishment & Building Maintenance

**INTERNAL & EXTERNAL DECORATING  
PAPER HANGING • TILING SPECIALISTS  
PLASTERING • PLUMBING • CARPENTRY  
FENCING • DECKING • PATIOS**

---

- Local Pensilva • 25 years experience in Cornwall.
- Proper job • Clean & Tidy • Good references
- Trustworthy • Excellent prices. • Free estimates.

**scottberridge@me.com**

**07889 218 710 (Daytime)    01579 362 006 (evenings)**

## PENROSS

Rosecraddoc Lodge Holiday Bungalows  
(Between Pensilva & Liskeard)

Ideal for family & friends coming to visit!



Refurbished in 2018. Sleeps 4. Electric, heating, bedding & towels inc in rent. Patio. Free wi-fi. Follow us on Facebook.

Sorry no pets or smoking.

Contact Julie Tucker on 01579 362221 or

email [penhargetfarm@gmail.com](mailto:penhargetfarm@gmail.com)

for 15% discount

## NICOLA GREENE

BSc (hons) Podiatry MChs

HPC Registered Chiropodist/Podiatrist

**Home Visit Practice treating all  
your foot care needs:**

- Nail Cutting
- Corns and Calluses
- Thickened Nails
- Dry Cracked Skin
- Verrucae
- Foot Pain
- Diabetic Foot Assessments
- Wound Care

**T: 01579 590027**

**T: 01752 291565**

**M: 07786164205**

**E: [nicki\\_greene@yahoo4com](mailto:nicki_greene@yahoo4com)**





**R&C**  
GROUNDWORKS  
& LANDSCAPES



Fencing  
Paths & Steps  
Turf & Astro turf  
Driveways  
Retaining walls  
Digger work  
Footings & foundations

Patios  
Rendering  
Decking

**And more**

Free no obligation quotes

**Call Rob on:**

**07518246666 or  
01579 641802**

## Window Cleaner

Also any upvc cleaned

i.e. fascias, gutters, etc.

gutters cleared & unblocked

Please phone Rob

**07709 053464**

## Window Cleaner

**Save Costly Energy!**



**SOLARTEC** Windows & Conservatories Ltd

**'A' Rated WINDOWS & DOORS  
at BEST PRICES EVER!**



Professionally fitted and finished by us with a  
10 year ins. guarantee.  
In all colours

FENSA  
REGISTERED

**NEW**

**FACTORY SHOP  
SUPPLY ONLY**

For all your windows, doors, conservatories,  
fascia, trims, guttering and sealants

**7-10 DAY TURN AROUND ON WINDOWS,  
DOORS and CONSERVATORIES**

**TEL: 01579 343425**

**FAX: 01579 344500**

WEBSITE: [www.solartecwindows.co.uk](http://www.solartecwindows.co.uk)

EMAIL: [sales@solartecwindows.co.uk](mailto:sales@solartecwindows.co.uk)

**KEEPING JOBS IN CORNWALL**



*PJR Garden Services*

**Phil Rule**

**All aspects of garden  
work - grass / hedge  
cutting, patios, fencing  
etc.**

**Mobile 07387 449004**



# **Tom Marshall**

## **TM Plastering**

Plasterer and Property Care

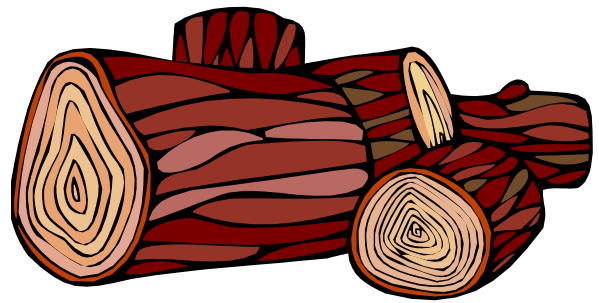
**07544819284**

Tommarshallcornwall@gmail.com

**Free estimates**

- Internal plastering
- Internal / external rendering
- Damp proofing
- Stud Walls
- Patio laying
- Chimney repairs
- Pointing
- Painting

## **SEASONED LOGS**



**MIXED LOAD**

**or**

**HARDWOOD**

**Tel. Jonathan**

**Mobile 07966 070725**

**or**

**01579 363157**

# **DAVID HEWETT GARDEN SERVICES**

**For all aspects of garden care:**

**lawn mowing, grass cutting,  
strimming, hedge cutting,  
clearance, and more.**

**25 years experience.  
Fully insured.**

**01579 363796**

Alphaplas Limited t/a  
**Trims&Windows**

[www.trimsandwindows.co.uk](http://www.trimsandwindows.co.uk)

**Double Glazed uPVC  
Windows-Doors-Conservatories**

'Conservation' vertical sliders a speciality



Supply only to Trade & DIY or  
Full installation registered with

**FENSA inc**  
10yr insurance backed guarantee



Email: [alphaplas@btconnect.com](mailto:alphaplas@btconnect.com)

**01752 840078**

Installation team based in  
Pensilva, Looe & Torpoint



# Group Travel

Enterprise Park, Midway Road,  
Bodmin, Cornwall

PL31 2FQ

Tel: 01208 77989



## BODMIN M.O.T. CENTRE at Group Travel

Class 4, 5 and 7. Trade enquiries available upon request. Tel: 01208 77989

### COACH EXCURSIONS & TOURS

#### 2019

7 <sup>th</sup> DEC	BATH CHRISTMAS MARKET
15 <sup>th</sup> DEC	TOUR OF CORNISH CHRISTMAS LIGHTS
21 <sup>st</sup> DEC	SNOW WHITE @ THE EXETER CORN EXCHANGE
7 <sup>th</sup> JAN 2020	CINDERELLA @ THEATRE ROYAL, PLYMOUTH

#### 2020

MARCH	VISIT BRISTOL 2 DAYS & 1 NIGHT
APRIL	VISIT EDINBURGH TOUR
17TH APRIL	EXETER RACES & '80 MUSIC NIGHT
AUTUMN	VISIT KENT TOUR

16 TO 70 SEAT COACHES AVAILABLE FOR PRIVATE HIRE. CORPORATE/ VIP, EVENTS & CONFERENCES, WEDDINGS (CAN INCLUDE STAG & HEN PARTY PACKAGE), HOLIDAY TRANSFERS, FUNERALS, DAYS OUT, GROUP TOURS, GOLFING HOLIDAYS & SPORTING EVENTS.

FOR BOOKINGS AND A BROCHURE PLEASE CALL

01208 77989 / 01208 72669

Website: [grouptravelcoachhire.com](http://grouptravelcoachhire.com) Email: [grouptravelcomwall@btconnect.com](mailto:grouptravelcomwall@btconnect.com)

## Martin Hoare – Local, Reliable, Competitive



WHEEL DIGGER FOR HIRE  
ALSO AVAILABE 'BREAKER'  
AND NEW CONCRETE  
'CRUSHER BUCKET'

ALL AT COMPETITIVE RATES

GROUND WORKS  
DRAINAGE  
NEW DRIVEWAYS  
SEPTIC TANKS &  
'SOAK AWAYS' INSTALLED



Phone 01579 363517

or

Mob 07863 291213



LASER LEVEL FOR HIRE  
QUOTES AVAILABLE



## INDEPENDENT FUNERAL DIRECTORS

Supporting families to arrange funerals with dignity, compassion and care.

Cremation, with full service, at Glynn Valley, Bodmin from £3060

Unattended direct cremation from £2323

Traditional burial, inclusive of church service from £2866

Green burial at Pentiddy, Pensilva from £3018

Prepayment Funeral Plans available

Prices correct as at July 2019. For detailed breakdown of costs, visit our website



**01579 362358 | [www.fdhallfunerals.co.uk](http://www.fdhallfunerals.co.uk)**



Avalennek, Caradon Town,  
Upton Cross, Liskeard  
Cornwall PL14 5AR  
Telephone 01579 363598  
Mobile 07901 538132  
[chrisrounsevell@tiscali.co.uk](mailto:chrisrounsevell@tiscali.co.uk)

### HOG ROAST EQUIPMENT HIRE AND MEAT SUPPLY

Hog Roasts For Those Special Occasions  
Self Catering or Hassle Free Service  
Everything done to your special requirements

**CHRIS ROUNSEVELL**  
**TRADITIONAL BUTCHER**



Come and visit our recently updated  
**Tile & Bathroom showroom** in PENSILVA

We offer a generous discount to all Pump Readers

Unit 24 Pensilva Ind Est, St Ive Road, Cornwall PL14 5RE 01579 362264

**CORNWALL TILE**  
CENTRE

Pensilva Showroom

Open	Mon - Fri	8.30am - 5pm
	Saturday	9.00am - 1pm

Tiles & Mosaics for:

Bathrooms & Kitchens Living Areas Conservatories  
Patios & External Areas Wet Rooms & Spas Swimming Pools  
& All Commercial Applications

 **atlas concorde**

[www.cornwalltile.com](http://www.cornwalltile.com)

**OPEN FOR RETAIL, TRADE & COMMERCIAL ENQUIRIES**



# *The* RACEHORSE INN



## *Gastro Pub*

**Head Chef Phillip Bradshaw**

Ray and Flori welcome you to  
the Racehorse INN

A fine food experience in a convivial  
atmosphere

Our superb Sunday lunch is one to be tried

Open Every Day for Lunch and Dinner

[info@racehorseinn.co.uk](mailto:info@racehorseinn.co.uk)  
[www.racehorseinn.co.uk](http://www.racehorseinn.co.uk)

Take-out: Pizzas & Fish'n'Chips now available



North Hill Village, Cornwall, PL15 7PG

01566 786 916



## J. H. Simmons

Painting & Decorating



**No Job Too Small**

For more information  
Please call John  
01579 362688

7 East Park, Pensilva

## D.J.A. BUILDING SERVICES

ALL ASPECTS OF PROPERTY  
MAINTENANCE BUILDING &  
REFURBISHMENT

- \* Bespoke Furniture and Kitchens
- \* Wardrobes and Bookcases
- \* Garden Sheds, Poultry Houses & Small Animal Shelters
- \* Over 30 years' experience
- \* Fully insured
- \* References available
- \* Free estimates
- \* No VAT

**Call David on 01579  
364050 / 07767662635**

## Westwood Garden Maintenance



*Antony Watts*

*Grass Cutting, Clearance*

*Weeding, Turfing*

*Hedge Cutting*

*Patio Cleaning, Planting*

*Regular Visits / One-off Contracts*

*Residential & Commercial*

**FREE ESTIMATES**

01579 362019    [www.westwoodgm.co.uk](http://www.westwoodgm.co.uk)    07952 094472





THE HOME OF WOOD

## BULK DISCOUNTS AVAILABLE ON OUR 30 YEAR SERVICE LIFE POSTS



**OUR GOLD TREATED STAKES AND POSTS ARE THE ONLY ONES AVAILABLE IN THE UK THAT ARE APPROVED BY THE WPA BENCHMARK FOR 30 YEAR SERVICE LIFE**

**For more information please contact one of our team**



**Bond Timber, Bake Sawmill, Trerulefoot, Saltash, Cornwall,**

**PL12 5BW**

**01503 240 308    [stacy@whbond.co.uk](mailto:stacy@whbond.co.uk)**



# Pensilva Stores

**Amazing Value**

**Premier**  
a great deal more from your local store  
**Mon-Sat. 7:00 AM. – 9:30 PM.**  
**Sunday 8:00 AM. – 9:30 PM.**

- ✓ Fantastic Special Offers every month!!! (See store leaflets)
- ✓ Come and Check out our great deals on Wine, Beer and Spirits
- ✓ Local Produce: Homemade Butter and Clotted Cream, Meat from our local butcher
- ✓ Cornish Fresh Fruit and Vegetables
- ✓ Fresh Bread, Pasties and Cakes
- ✓ Take Away Coffee, tea and hot chocolate
- ✓ Newspapers and Magazines, Greeting Cards
- ✓ Paypoint, Lottery

**\* Free to use ATM \***

**\* Card Payment \***

**Friendly Staff + Service with a Smile !!!**

**Pensilva Stores is a family run business who have been serving local people and visitors for more than 21 years.**

Higher Road, Pensilva, Liskeard, Cornwall PL14 5NQ

Tel: 01579 362547

# MENDOLOGY

## Garage Door Specialist

- ☐ Repairs
- ☐ Servicing
- ☐ Installations

Out of hours service  
call Dave anytime 07974 442645

**MENDOLOGY** COMMERCIAL DOORS LTD  
[www.mendologydoors.co.uk](http://www.mendologydoors.co.uk)

**01579 363760**

# PensilvaCars

01579 363516

- ✓ MOTs Class 4
- ✓ Service
- ✓ Repair
- ✓ Tyres
- ✓ FREE Courtesy Car

- ✓ Car & Van Sales
- ✓ Diagnostics
- ✓ Air Conditioning



**We have offered a supply, fit & balance of tyre service for 10 years at competitive prices.**

**Most of our tyres can be supplied the same day.**

**LOCAL RECOVERY £45.00**

**[www.pensilvacars.co.uk](http://www.pensilvacars.co.uk)**

**[pensilvacars@hotmail.co.uk](mailto:pensilvacars@hotmail.co.uk)**

We can service and repair your car to manufacturer specification, keeping your dealer warranty without main dealer expense.







# KEITH RICHARDS

## Motor Body Repair Specialists

A family run business with fully equipped & maintained workshops & a focus on  
Customer Care

- ♦ Motor Body Repair Specialist
- ♦ Mechanical Repairs
- ♦ Servicing to All Makes & Models
- ♦ Computer 4 Wheel Alignment
- ♦ 24 Hour Recovery Service
- ♦ Renovations & Re-sprays
- ♦ Member of RMI (Retail Motor Industry Federation)
- ♦ Latest Diagnostics (including specialists for VW, Audi, Seat, Skoda & Vauxhall)

With over 30 years' experience we aim to provide you with:- Value for Money -  
Friendly Service - Professional Approach - Expert Advice that you Can Trust  
(Visit our website for more details)

Pensilva Industrial Estate, St Ive Road, Pensilva, Liskeard, Cornwall PL14 5RE

Tel: 01579 362593

Email: [keith@keithrichardsmotorbody.co.uk](mailto:keith@keithrichardsmotorbody.co.uk)

Fax: 01579 363194

Website: [www.keithrichardsmotorbody.co.uk](http://www.keithrichardsmotorbody.co.uk)

Wm. Newham & Sons Est. 1835

Proprietor Robbie Savill AWCB

## **CHIMNEY SWEEPS & BLACKSMITHS**



**CHIMNEY SWEEPING**

**BIRD GUARDS, COWLS & POTS FITTED**

**CCTV INSPECTIONS & SURVEYS**

**STACK REPAIRS & REBUILDS**

**RIGID STEEL SYSTEMS ERECTED**

**STAINLESS STEEL and PUMPED CONCRETE  
CHIMNEY LINING**

**STOVES SUPPLIED, INSTALLED & REPAIRED**

**FIREPLACE ALTERATIONS & RENOVATIONS**

**FULL RANGE OF FIREPLACE FURNITURE**  
made to order

**01579 347777**

**need somewhere to stay ?  
between homes ?  
family/friends visiting ?**



**ideal for Pensilva  
& St.Ive**

**please call Jackie on  
01579 362216**

# **J. J. Child**

**Plumbing and heating engineer.**

**Oil appliance service, repair and breakdowns.**

**Over 30 years experience**

**Call John: 01579 362336 or 07837 921086**



# Bargain Corner Free Ads up to £50

Ads are free for items up to £50. £5 charge for items over £50. Please ring the Parish Office on **01579 363096** or leave a note at Millennium House reception or email **parishpump@btconnect.com**.

**\*\*\*Please let us know when your item has sold\*\*\***

Double **Orthopaedic Electric bed** with 4 drawers underneath & headboard. No mattress. Excellent condition. Viewing possible up to midday each day. **£1200**. Cost £4000 new. Contact Mrs. Symons **01579 362688**.

Hotpoint '**fridge** 600x600x900mm. Good working order. **£20** ono. Pensilva. **01579 362788**

Solid **pine side table** with central drawer, 24 ½" high x 24" wide x 13" deep (can email a photo) **£35**  
Unopened Unicom **Laser Level** ideal for small building projects **£15**.  
**Cider Jar/Flagon** used for supplying harvest workers with Cider or water during harvesting up to the 1970's. 13" high x 7 1/4" wide. A true piece of folk art ready to display. No makers name. Blemishes possibly from rough scrumpy. **£6**.  
2 large size lightweight **camouflage military jackets**. **£10 each or £15 both**.  
**01579 384658**

Of interest to beekeepers. Approx 30 Hoffman brood frames. Any offer considered. **01579 320401**.

2 x Medium Weight **Car Ramps** **£20**.  
**Push Mower** **£5**.  
**01579 363199**

2 x 225/45 r17 **used tyres**, good tread. **£20** the pair.  
Set of **Snow chains**, new and unused fit 14" to 19" rims, self adjusting. **£40**  
Pensilva **01579 362207**

Maximuscle **home gym** system **£100** ono.  
Black leather **chaise longue**. Excellent condition. **£100** ono.

**Scelextric** Sport Le Mans set. Still in box. Great condition. **£100**.

**Plastering gear**: 110v paddle mix with transformer, various trowels, hawk and other bits. Good for DIY etc. **£70** ono.  
**Easycamp** Tour Ligata **6 berth tent**. Used only 3 times. **£100** or offers.

Dark brown **leather chair**. **£50**  
**07980 380224 - Pensilva area**.

**Door Canopy**. Brand new still in box. Black sides, white roof. **£15**.  
Wooden **hall seat** with cushion. Two-door opening for shoes. **£15**  
Call **07856 534691** for more details.

Brown speckled **carpet**, 2m x 5m. Brand new (over ordered). **£50**.  
Arch design **headboards**. **£20 each or £35 pair**.  
**01579 362211**

Brand new, never worn, **motor bike helmet**, with visor and inside sun visor, red, grey & white. Size medium. Paid £90, will accept **£30** or nearest offer.  
**07980 284002**

Wood-framed **mirror** 2'6" x 3'7". **£10**.  
**01579 363812**



## What's on in St Ive Parish ?

WHAT'S ON	WHEN	CONTACT DETAILS
<b>MILLENNIUM HOUSE</b>		
Aikido	Thursday 7:00pm	
Antique & Collectors Fair	4th Sunday Monthly 10:00 - 4:00	
Badminton Club	Mon & Tues 7:30pm. Fr. 8.00pm	01579 363594 (Carol & Nigel)
Book Exchange	Daily	01579 363096
Pensilva Breathers	Monday 12.30pm - 2.30pm	01579 532467 Pauline
Country Dancing	Alternate Thursdays 8.00 - 10.00pm	01579 382402 Ray Buckingham
Drawing Class	Wednesdays 09.30am - 12.30pm	07886 343621 (Yvette Wiltshire)
Face Yoga	Monday from 10:30am.	lilianjones@hotmail.co.uk
Ladies Netball	Friday 09.15 - 10:15am	07985 387472
Penmill Art Group	Friday 10am - 2pm	01579 363441
Pensioners Lunches	Tuesday 12:00 - 2:00pm	01579 363096
Short Mat Bowls	Thursday 7:00pm	01579 208528
Watercolour Art Class	Wednesdays 1.30pm - 4.30pm	07886 343621 (Yvette Wiltshire)
Wildlife Group	Quarterly	01579 362539 ( Hilary)
Woman's Institute	2nd Wed Monthly 7:15pm	01579 362531 (Jean Hoare)
Yoga	Wednesday 7:00pm	01579 344464
<b>PENSILVA VILLAGE HALL</b>		
Brownies	Monday 4:00 - 6:00pm	01579 362239 Martha Oliver
Pensilva Wednesday Club	Wednesday 2:30pm	01579 363221 Mrs Jean Conner
Pensilva Snooker Club	Wed 7:00pm + Various times	01579 362091 Phillip Bond
Guides	Thursday 6:00 - 8:00pm	01579 363228 Caroline Hambly
MIMS	Friday 1.00 - 3.00pm	01579 343702 (Chris)
Rainbows	Friday 4:00 - 5:00pm	01579 362091 Lynne Bond
Rangers	For Info	01579 362982 Kirsty Oliver
<b>PENSILVA PRE-SCHOOL</b>		
Pensilva Pre-School	Monday-Fridays 9:00 - 3:15 (session times available)	07890 023924 Mrs Suzanne Kinsman (Manager)
Tiny Tots Toddler group	Friday 9:15 - 11:15am	07890 023924 Mrs Suzanne Kinsman (Manager)

## ST IVE INSTITUTE

Gardening Club	1st Monday monthly 7:30pm	01579 382762
St Ive Snooker Club	Monday & Thursday 7:00pm	01579 382315 R Bunkum
Post Office	Wednesday 10:30 - 12 noon	
Coffee Morning	Wednesday 10:30 - 12:00	
St. Ive Singing Group	Thursday 4.00 - 5:30pm	01579 382341 (Clare)

**St Ive Institute available for hire, £3.50 per hour.** This includes the use of the kitchen & electric (excluding wall heaters, which are on a £1 coin meter)

**Contact Sue Sedgewick on 01579 383291**

Hall meetings will now be held quarterly on the second Tuesday of the month in January, April (includes AGM), July and October.

## ST IVE & DISTRICT GARDENING ASSOCIATION

**Meetings in St Ive Village Hall 1st Monday in the month at 7.30pm**

**Monday 2<sup>nd</sup> December**     **Shaun Poland** , with ideas for **Gardens for Butterflies**

**Saturday 11<sup>th</sup> January**     **Annual Lunch** details tbc

**Monday 3<sup>rd</sup> February**     **Michael Stephens**, with **Know your onions**

**Monday 2<sup>nd</sup> March**     **7pm Annual General Meeting . Then at 7.30pm Iain Rowe** will talk to us about **Caradon Mines and Miners**

*Visitors and new members are always welcome to join us.*

## St Ive Games Evenings

**Board Games, Card Games and Table Tennis**

**The next Games Evenings will be on**

**Friday January 3rd, 2020 at 7pm**

For further details contact Maggie or Wendy on:

**01579 208572**

or email: **wendycarr21@gmail.com**

# Pensilva Post Office

Located through the Café on the 1<sup>st</sup> floor of Millennium House



## Opening times:

Tuesday	-	9am to 1pm
Wednesday	-	9am to 12 noon
Friday	-	9am to 12 noon

## ***THE MEL BAR*** ***MILLENNIUM HOUSE*** ***Licensed Free House***

**GUEST ALES - LAGERS - CIDERS - WINES - SPIRITS**

### **Opening Hours**

Mon - Fri	-	5 pm to 11 pm
Sat / Sun	-	12 noon to 11 pm

### **Christmas and New Year Opening Hours:**

Dec 24, 4pm-11pm: Dec 25, noon-2pm: Dec 26, noon-11pm:  
New Year's Eve, 5pm to 2am: New Year's Day, 3pm to 10pm.

**PLEASE NOTE AMENDED OPENING HOURS**