

# THE PARISH PUMP



July 2019  
Edition 452



**The Newsletter for the Parish of St Ives**



**Some new arrivals...**



**... and a prize-winning “Peacock”...**

**... all at Merryhue Farm. (Story on page 8)**

## Disclaimer

The articles appearing in this magazine do not necessarily reflect the views of the Parish Council nor of the Parish Pump Editor.

## Parish Councillors Telephone List

Peter Haines (chair)	01579 362459	Alan Moss (vice-chair)	01579 362064
James Bruce	07411 192645	Marlene Carr	01579 362919
Martin Corney	01579 382450	Angie Haines	01579 362459
Rosemary Farley	01579 384810	Tony Hodson	07973 536964
Nigel Libby	07968 891814	Kath Parkes	01579 362005
Ivor Vaughan	07979 934604	Craig Vaughnley	01579 364083
Samantha Reilly	via Parish Office 01579 363096		
Sharon Daw (Cornwall Councillor) 07837 379305 slash.dash.daw@gmail.com			

## Meetings of St Ive Parish Council

**2nd Monday monthly:** Parish Council Meeting, alternating between St Ive Village Hall and Millennium House (please refer to notice boards for the agenda showing start time and venue each month). Any changes to the regular dates (i.e. Bank Holidays etc.) will be publicised accordingly.

**4th Tuesday Monthly:** Parish Council Planning Committee Meeting, 7 pm at Millennium House Pensilva, followed by the Parish Council Finance & Administration Committee Meeting commencing at 7.30 in the same venue.

## Date of Next Parish Council Meeting

**Monday, July 8th, 2019**



**Devon & Cornwall Police**  
Building safer communities together



**101**

Minicom 18001 101

## Police Community Neighbourhood Office

Your Community Support Officer is PCSO Steve Edser 30173.

email: CIOsnbmliskeard@devonandcornwall.pnn.police.uk

To report a crime call 101 or go to [www.devon-cornwall.police.uk](http://www.devon-cornwall.police.uk)

In an emergency call 999

## Contact details for St. Ive Parish Council and for Millennium House

Address for correspondence: Millennium House, Century Square, Pensilva PL14 5NF

General Parish matters should be raised initially with the Parish Clerk, Jenny Hoskin, who will present them to the Parish Council.

Telephone: 01579 363096, email: [stiveparish@btconnect.com](mailto:stiveparish@btconnect.com)

For accounts matters for the Parish and for Millennium House contact John Body, Finance Officer: 01579 362102, email: [millenniumhouseadmin@btconnect.com](mailto:millenniumhouseadmin@btconnect.com)

Millennium House enquiries and reservations: 01579 363096

email: [millenniumhouse@btconnect.com](mailto:millenniumhouse@btconnect.com).

On the web: Millennium House Website: [www.cornwallvenue.com](http://www.cornwallvenue.com)

Parish website: [st-ive-parishcouncil.gov.uk](http://st-ive-parishcouncil.gov.uk) Facebook: [facebook.com/stiveparishcouncil](https://facebook.com/stiveparishcouncil)

## Parish Pump Information and Contact Details

To contact the editor please email: [parishpump@btconnect.com](mailto:parishpump@btconnect.com)

or phone the Parish office: **01579 363096**.

Hardcopy submissions by post or by hand to the Parish office, Millennium House.

Softcopy submissions: By email to the editor in MS Word, MS Publisher, pdf, Tiff or jpeg. Please use A4 pages and minimum 16 point font as the Pump is initially produced in A4 size and reduced to an A5 booklet at the printing stage. If in doubt please contact the editor.

### Current Advertising Prices including VAT at 20%

Per issue:      Quarter Page £7.50      Half Page £15.00      Full Page £25.00

10% discount for 12 months paid in advance.

Bargain Corner free ads by email to the editor or drop off at the Parish Office.

**Deadline for the Parish Pump is STRICTLY 15th of every month**

## THE MEL BAR

Relax and wind down  
at the Mel Bar, Millennium House



## From the Editor

Pensilva Carnival is upon us once again. Let's hope for some nice weather during the week and especially on Carnival Day, Saturday July 6th. The Events Group has done a great organising job once again: please reward them by thanking any of the organisers you come across. All that work is for the good of us, the community, and the least they deserve is to receive a few words of thanks. But they would probably agree that a better reward still would be to see loads of people enjoying the various events and milling about on the big day.

So, if you are one of the many residents of Pensilva and the surrounding area who does not normally bother with Carnival, give it a go! You might be surprised to find that you live in a more lively and vibrant village than you had previously imagined. There'll never be a better opportunity to get out and meet your neighbours and, for families with children, it's a must!

Take care - Joe

## Millennium House Opening Hours

### Reception

9am till 2.30pm Monday to Friday

### Community Coffee Shop

See separate notice on next page

### Bar

5pm till 10pm Monday to Thursday

3pm till 10pm Friday

12am till 11pm Saturday and Sunday

If no-one is available please leave a message in our **letter box** at the front<sup>4</sup> of the building or on our answer phone by calling **01579 363096**.



# *COMMUNITY COFFEE SHOP*

## *MILLENNIUM HOUSE, PENSILVA*

### **OPENING HOURS**

<b>Monday</b>	<b>10.a.m. to 1.p.m.</b>
<b>Tuesday</b>	<b>9.a.m. to 1.p.m.</b>
<b>Wednesday</b>	<b>9.a.m. to 1.p.m.</b>
<b>Thursday</b>	<b>9.a.m. to 1.p.m.</b>
<b>Friday</b>	<b>9.a.m. to 1.p.m.</b>

**Open to small groups (pre booked) for Cream Teas - Buffet - Lunch Bites**

The Coffee Shop is run by volunteers who aim to offer a cheery, relaxed atmosphere for you to sit and enjoy a cuppa. We adapt our service in response to feedback from members of the public, whose support we rely on to continue. We would like to offer our sincere thanks for your support of the Coffee Shop.

### **BEWARE OF SCAMMERS & UNSCRUPULOUS TRADERS**

The Parish Pump has received a report of unscrupulous roofers thought to be working in South East Cornwall. They may be targeting areas with a high proportion of elderly residents. Don't let anybody convince you that you need a new roof, or other work, without asking for a second opinion from someone you trust. If you are suspicious or need help, call the Citizens Advice Helpline on 03454 04 05 06 or Trading Standards on 0300 1234 191.

You may also be interested in "The Little Book of Big Scams" which is available, free of charge, here:

[https://www.cornwall.gov.uk/media/6917183/little\\_book\\_scam.pdf](https://www.cornwall.gov.uk/media/6917183/little_book_scam.pdf)

### **PROSTATE CANCER SUPPORT GROUP**

The Tamar Valley Health Patients' Group runs a support group called Tamar Area Prostate Support (TAPS). Anyone worried about Prostate Cancer or interested is welcome to join the group. Call Chris Greensted 01822 834797 or email [c.greensted@plymouth.ac.uk](mailto:c.greensted@plymouth.ac.uk)

## **CHAIRMAN'S COLUMN**

Well here we are in mid summer, I hope the weather stays fair. We start the month with Pensilva Carnival week, with lots of events during the week (starting 30th June). Please support the groups putting on these functions, its good fund raising for them and fun for you. It all culminates with Carnival day (Sat 6th July), which is a great day out, with lots to see and do. So please come along and enjoy yourselves. In mid July The Events Group will be holding their first FILM CLUB NIGHT, more details elsewhere in the Pump. This sounds like a good thing for the Parish, and a much easier way to go to the cinema. During the school summer holidays, the council and St Johns church are joining forces to put on activities for children at Millennium House for two days a week. see details elsewhere in the Pump. Finally I hope you all get a chance to enjoy the summer, but please think of others and keep any outdoor music to a reasonable level.

Pete Haimes.

### **SUMMER SCHOOL HOLIDAY ACTIVITIES FOR CHILDREN**

During the school summer holidays, the Council and St Johns Church, will be hosting activities in Millennium House for school children, on two days a week. One day of art/craft workshops, plus one day of bouncy castles, ball pools etc., in the sports hall at a small charge. Also, we will be providing a free meal for any children in receipt of free school meals, on Monday, Wednesday and Friday of each week. To this end we would ask any parents whose children are in receipt of free school meals and would like to take advantage of this, to contact the council (in confidence on 363096, or drop in to Millennium House and leave your details) so that we will know how many to cater for. Note:- all children will need to be accompanied by a parent or guardian. We are also looking for more volunteers to help with meals or activities. If you can help in any way, please leave your details at Millennium House or ring 363096 and we will get back to you.

**SEE POSTERS FOR MORE DETAILS AND DATES.**

## Things We Can All Do To Reduce Our Carbon Footprint

**Install LED or Low Energy light bulbs.** They use much less electricity, last much longer and work out much cheaper in the long run than conventional bulbs.

**Switch to a renewable energy supplier.** There are some very competitive 100% renewable energy suppliers on the market.

**Buy fresh, locally sourced food.** Less fuel was burnt in transporting the produce around and benefits the local economy. Also, using the local greengrocer and butcher reduces the amount of single use plastic that supermarkets use to wrap fresh food.

**Use shared transport as much as possible (cars, buses, trains).** Using shared transport for getting to work or the school run will reduce the amount of CO<sub>2</sub> and nitrous gases being sent into the atmosphere. There is also the Carshare Cornwall scheme.

**Cycle and walk more.** Fresh air, no fossil fuel burning, healthy – what more could you want! Don't forget a crash helmet and hi-vis clothing.

**Reduce, Reuse, Recycle.** What isn't reduced, reused or recycled goes to landfill or incineration. Landfill produces decomposition gases (mostly methane and CO<sub>2</sub>) that affect global warming. Incineration produces mainly CO<sub>2</sub> and nitrous oxide; both are greenhouse gases.

**Cut back on buying new clothes.** The fast turnover fashion industry is the largest emitter of greenhouse gases created in the production and distribution of clothes. Instead of click-buy-wear-bin, aim to buy clothes locally and wear clothes for years and not just once.

**Cut down on business trips and holidays abroad.** Planes and ships are the second biggest emitters of greenhouse gases. Take less holidays abroad to reduce the emissions from these modes of transport. More holidays in the UK will also boost the local economy – and the UK might need that if there is no deal over Brexit! Use the Internet for business calls and meetings with people abroad.

**Demand that Government, businesses and public organisations do more to reduce their carbon emissions and help you to reduce yours.** Cornwall Council declared a climate emergency in Jan 19 and aims to be carbon neutral by 2030. Our Parish Council followed suit in April. Hold them to account. The Government has not yet done so. Tell your MP, Sheryll Murray, that you care and you want her to care too. (sheryll.murray.mp@parliament.uk) Is your employer or school doing enough to reduce their carbon footprint?

**Provided by the St Ive Parish Climate Action Group.**

**Tel: 01579 382341 or find us on Facebook!**

## **News from Merryhue Farm, home to Transferable Skills Training (TST), Battling On and Work Skills South West.**

**Awards.** TST is delighted to announce that it won the Private Education & Development's Best Vocational Education & Training Centre Award, South West Region, 2019. This award was given in recognition of the high quality of teaching and pastoral support students receive at TST, resulting in some of the highest college retention and pass rates in the South West. In a joint project between TST, Dementia Adventure and MayFest a giant peacock was created out of willow and papier-mâché for the MayFest parade. The peacock was created by young people with learning difficulties, adults with mental health disorders and those suffering with dementia: a truly cross-generational cross-community project. The peacock also won first prize in its category at the Royal Cornwall Show.

**Film at Merryhue Farm.** Hamish Marshall from BBC Spotlight visited Merryhue Farm to film an initiative between TST, Turning the Cogs and Bad Wolf Horizon, who teamed up to demonstrate the power modern technology can have in opening up the countryside to individuals with life limiting illnesses or disabilities. Bad Wolf Horizon flew drones along the woodland and lakeside walks around the farm, beaming live footage straight back to headsets worn by students with learning difficulties and disabilities. This allowed them to experience first-hand the joy of seeing spectacular scenery and connect with nature in a truly unique way.

**New Arrivals.** Merryhue's range of unusual animals includes alpacas, Swiss Valais black-nosed sheep, and giant and miniature donkeys. We are now happy to announce the arrival of Hamish, Nessie, Frazier and Bonnie, our four highland calves. The gentle Highland cattle have already proved a huge hit at Merryhue, where animal-based therapy helps individuals develop confidence and coping strategies to deal with mental health issues, learning difficulties, disabilities and life-limiting illnesses. We are also happy to welcome the birth of three unexpected kids, two female and one male, from our rescue angora goats, all of whom are fairly well aged and had come to Merryhue to retire.

We provide a wide range of programmes, short courses and volunteering opportunities through the three organisations based at Merryhue Farm, TST, Battling On and Work Skills South West. For info please contact us on 01579 384798. Remember, we are here to serve our local community and if you want support with a local project please call.

### **Police notice about dog-walking on Bodmin Moor**

Please remember that from March 1st to July 31st all dogs must be kept on leads less than 2 metres long at all times while on the moor,



## PENSILVA WI JUNE MEETING

If the old saying 'if you want to get ahead, get a hat' is true, then the members of Pensilva WI will be forging ahead, as Pauline Millar came to tell us the history of hat-making and showing us how to make our own fascinators. Soon, many ladies were folding and ruching ribbon and attaching them to the base material to make very attractive hair adornments. There was much hilarity and 'sharing' of ideas and everybody went home with a really lovely fascinator. President Jean Hoare thanked Pauline for a very entertaining evening.



Fascinating! The ladies of Pensilva WI with Pauline Millar.

### **Dates for your diary:**

Mon 1<sup>st</sup> Jul – Ladies Night, 7.00pm Millennium House

Thu 4<sup>th</sup> Jul – Cream teas at the Victoria Inn, 2-4 pm.

Sat 6<sup>th</sup> Jul – Pensilva Gala Day.

Sun 7<sup>th</sup> July – CFWI Centenary Garden Party, Boconnoc 2-5 pm.

Tue 23<sup>rd</sup> Jul – A walk in Charlestown. Meet at Cuddra WI Hall, 10.30am

Wed 31<sup>st</sup> July – Calendar Girls, Theatre Royal, Plymouth. 2.30pm

**Birthdays this month:** Amanda Smee, Kay Price & Alison Willis who all received cards and lovely posies.

**Competition winners:** Flower of the month, 1<sup>st</sup> Verna Dawe, 2<sup>nd</sup> Alison Willis, 3<sup>rd</sup> Cherry Woodhouse. Decorated hat, 1<sup>st</sup> Jenny Rendle, 2<sup>nd</sup> Verna Dawe, 3<sup>rd</sup> Irene Elliot.

Eric Distin, auctioneer will be the speaker at our July meeting which will be held at 7.15pm on Wednesday 10<sup>th</sup> July at Millennium House. Competitions will be Flower of the month and an item of antique/old jewellery. This should be a very interesting evening so why not come along and join in the fun.

NB. Pensilva 2019 Horticultural Show schedules are now available at Millennium House.

## **St Ive and District Gardening Association**

Our trip across the Tamar to a garden in Yelverton was well worth the traffic. Links Lodge is as delightful as it is extensive, with many specimen trees and unusual plants among the beds and borders. The garden stretches from the manicured lawn by the house, winding down the slope past flower beds and water features, to the dell at the bottom where the fruit and vegetables are flourishing.

Our plant sale at the end of May was very successful with a wide range of plants for sale. Many thanks to all those who supported the day. Our next meeting will be to the garden at Dye Cottage, St Neot on 1<sup>st</sup> July, Leaving St Ive car park at 6.50pm.

We are always happy to welcome visitors and new members.

## **Pensilva Wednesday Club RVS**

Meet in Pensilva Village Hall at 2.30.p.m. on alternate Wednesdays.

All Adults welcome to join - £1 per meeting - Refreshments -

Various Activities - Entertainment - Raffle

**Coach Trips planned for the year – also open to non-members**

July 10th ..... Coach trip to Atlantic Village

July 24th ..... Hearing Dogs

**AUGUST ..... NO MEETINGS IN AUGUST**

**To book coach trip, please contact Jane Mann on 01579 362960**

For general enquiries please contact Jean Connor on 01579 363221

## **Pensilva Country Dance Club**

We are a small, friendly group that meets once a fortnight in Millennium House, Thursdays, 7.30pm to 9.30pm. If you would like to join us to try country dancing, we would give you a warm welcome. No previous experience needed!

For more information ring Jill 362819 or Liz 340942.

## **MEMORY CHOIR**

After the TV programme on the Dementia Choir recently, we were delighted when so many decided to come along to the new Memory Choir in Liskeard, which started during June and is led by Musical Director Heather Taylor.

The Memory Choir has been set up for people living with dementia or those experiencing social isolation. If you, or anyone you know, would enjoy an afternoon of fun and singing, then please come along to the Wesley Church in Liskeard on Tuesday afternoons between 2 and 4 pm.

For more information, please contact Gorfenna Community on 01579 384810 or email: [community@gorfenna.co.uk](mailto:community@gorfenna.co.uk).



**NO  
EXPERIENCE  
NEEDED  
ALL WELCOME**

PLEASE  
CONTACT CLARE:  
01579 382341

**OR EMAIL:**

[CONTACT@CLARENORRISH.COM](mailto:CONTACT@CLARENORRISH.COM)

WEBSITE: [clarenorrish.com](http://clarenorrish.com)

**EVERY THURSDAY 4-5.30PM, ST IVE VILLAGE HALL**  
FROM POP TO CORNISH SONGS. WE ONLY SING IT IF IT'S FUN!

## **Supporting Guiding & Scouting Activities in Pensilva 200 CLUB Draw Results for May 2019**

<b>1st No. 56 Mrs Jane Gilbert</b>	<b>2nd No 166 Mrs S Rowe</b>	<b>3rd No 50 Mr B Henderson</b>
--	----------------------------------	-------------------------------------

**Thank you for your support**



MILLENNIUM HOUSE EVENTS GROUP PRESENTS

# PENSILVA

# CARNIVAL

**SATURDAY 6TH JULY 2019**

**LIVE**

**ENTERTAINMENT**

Tavistock Twirlers will be performing, as well as no less than THREE live singers and the carnival procession - taking the longer route around the village by popular demand!

**COMPETITIONS**

Fancy dress contest, Dog show, Baby show, Raffle prize draw, and the winners of Pensilva in Bloom and Scarecrow contest will be announced (Entry forms in the pump or at Millennium House)

**FOR THE KIDS**

Professor Goodvibes Punch and Judy, Bouncy castles, Sumo Wrestling, and be sure to get a hands-on experience with the wild animals at Marks Ark!

**CARNIVAL WEEK**

We've got tons of events in the week leading up to carnival: Euchre and board games night, film night, free dance classes. Find the carnival week flyer elsewhere!

**JULY 6TH 12PM**

**BBQ & PASTIES**

FREE ENTRY. Find us at Millennium House, PL14 5NF.  
Carnival Week starts 30th June.  
Carnival Day is on the 6th July.  
Rosettes sponsored by WBM Groundworks.





# PENSILVA

## CARNIVAL WEEK

30TH JUNE TO 5TH JULY 2019

**SUNDAY**

**30TH**

- \* Preschool walking treasure hunt, registration 10:30-11:30am in the arts and crafts room. £3/adult, £2/child - includes lunch!
- \* Car treasure hunt from 3pm, hosted by Pensilva School Association. (£5 per car, assemble at Millennium House)

**MONDAY**

**1ST**

- \* Ladies Night @ 7pm Millennium House, donations on the door in aid of Relay for Life.

**TUESDAY**

**2ND**

- \* Kid's board games from 6pm
- \* Euchre night in the Mel bar from 7:30pm (in aid of Relay for Life)

**WEDNESDAY**

**3RD**

- \* Free Dance workshop (School years 4-6 @ 3:45-4:45pm; Years 7-13+ @ 5-6pm - registration form at MH reception and Pensilva school, workshop will be at Millennium House)
- \* All Being Well Quiz @ 7:30pm, Millennium House

**THURSDAY**

**4TH**

- \* Cream teas @ the Victoria Inn 2-4pm
- \* Bingo Night, eyes down 8pm @ MH (for British Heart Foundation)

**FRIDAY**

**5TH**

- \* Family Film Night 3:30pm venue TBD (PSA)
- \* Adult Film Night 8pm @ MH ("A Star is Born")

St John's Church is also hosting a family fun day on Wednesday 3rd July, 3:30pm-6pm.  
AND DON'T FORGET CARNIVAL ON SATURDAY 6th JULY!





# **PENSILVA** **IN BLOOM**

**CARNIVAL WEEK 2019**

**PRIZES FOR:** BEST GARDEN  
BEST HANGING BASKET  
BEST TROUGH/TUB DISPLAY

Must be on display from 30th June to 6th July. Entry forms in the Parish Pump or MH reception.

**FOR KIDS:** BEST GARDEN DESIGN ON A TRAY

Must be brought to display at Millennium House, date TBA





## WALKING TREASURE HUNT

Sunday 30<sup>th</sup> June 2019

Millenium House, Pensilva PL14 5NF

10.30 -11.30 registration

(in the arts & Crafts room)

Cost: £3 per adult, £2 per child

Price includes: Activity sheet, participation certificate  
and badge

Plus a picnic lunch (children) and jacket potato (adults)

Tea, coffee and squash available to purchase

Event being run by Pensilva Pre-school (charity number  
1026118) and any monies raised will go to our  
outstanding pre-school

Any queries contact Pensilva Pre-school on 07890 023924







ADULTS ONLY  
**EUCHRE**  
**NIGHT**

**TUESDAY 2ND JULY**

**7:30PM AT THE MEL BAR, MILLENNIUM HOUSE**



**£5 a pair**

**Organized by Relay for Life.**

**Board games for kids will  
also be available in the  
function room from 6PM.**

**Ruth and Colleen's Monthly**

**BINGO**

**At Millennium House**

**on Tuesday July 2nd**

**Then on August 6th**

**Eyes down at 7:30pm**

**Over 18's only**

**£££ CASH PRIZES £££**

**QUIZZES AT MILLENNIUM HOUSE**

**OUR NEXT QUIZ IS THE CARNIVAL QUIZ ON**

**WEDNESDAY JULY 3RD, 7:30PM**

**Then Aug 31, Oct 26, Dec 14.**

**Organised by and raising funds for**

***All Being Well***

**Improving the health of our community**



# VICTORIA INN



For Pensilva Carnival on Thursday July 4th.

**Cream tea, coffee and cake afternoon, including  
Morris Dancers. Proceeds to Air Ambulance.**

## FOOD

**Tuesday Curry night and full menu.**

**Carvery every Wednesday 12-3pm and Sunday 12-5pm**

**Brunch Fridays from 9.30am – 11.30am**

**Fish and Chip Friday Special!**

**Sunday evening food 5pm - 8pm**

**Two for £12 - Tuesday to Thursday**

**Tuesday to Thursday night 2 for £12**

**Check out our new menu including “Healthy options.”**



**LIVE MUSIC EVERY MONTH**



**Saturday 6th July - Leon Harvey from 9pm**

**CALL – 01579 363933**

Opening Hours - \*\*\* Please note changes from July 1st \*\*\*

Monday			5pm to 11pm
Tuesday			5pm to 11pm
Wednesday	12pm to 3pm	&	5pm to 11pm
Thursday			5pm to 11pm
Friday	9.30am	to	11pm
Sat/Sun	12pm	to	11pm

**Free Pool on Mondays**



PENSILVA SCHOOL  
ASSOCIATION  
PRESENTS

# MOVIE NIGHT (FOR ADULTS)

FRIDAY  
JULY  
5TH

AT MILLENNIUM  
HOUSE

MOVIE  
STARTS 8PM

FEATURED  
MOVIE:

A STAR  
IS BORN  
£2 ON THE DOOR



# PENSILVA

## CARNIVAL

### SCHEDULE OF EVENTS

**12:00**

Fancy dress registration. Free entry: 5 and under, 6-11, 12+, pairs, groups, and floats

**12:30**

Fancy dress judging and presentations

**1:00**

Parade begins (around town route), followed by official opening

**1:30**

Dog show - £1 entry per class (main arena).

**2:00**

Baby show (inside Millennium House in the craft room) - free entry: 0-6, 7-12, 13-18 months

**2:30**

Tavistock Twirlers (main arena)

**3:00**

Professor Goodvibes Punch & Judy show

**4:15**

Raffle Prize draw

**7:30**

Disco @ Millennium House, £1 entry

**TILL LATE**



**6th July 2019 at PENSILVA CARNIVAL**



# **FAMILY DOG SHOW**

- 1. Best Junior Handler  
under 16**
- 2. Puppy under 12 months**
- 3. Fastest biscuit eater**
- 4. Prettiest bitch**
- 5. Handsome Male**
- 6. Best rescue**
- 7. Scruffiest dog**
- 8. Most appealing eyes**
- 9. Waggiest tail**
- 10. Dog judge would like to  
take home**
- 11. Best in show for all 1st  
places**

**£1 entry per class**

**Rosettes to 4th place  
in each class.**

**Judge TBC**



**1:30pm Millennium House, Pensilva Carnival main arena**

**For more info call Charlotte on 078 6507 3157**



Pensilva Community Association and C-Fylm Present

# PENSILVA FILM CLUB



**FRIDAY JULY 12th**

DOORS OPEN 7PM, FILM STARTS 7:30PM  
AND EVERY SECOND FRIDAY OF THE MONTH AFTER THAT!

**£2.50**  
for C-Fylm  
members \*

## OPENING NIGHT FILM:



In 1940, a married woman (Gemma Arterton) and a screenwriter (Sam Claflin) develop a growing attraction while working together on a propaganda film about the evacuation of Allied troops from Dunkirk, France.

**TEA / COFFEE / ALCOHOL AT THE BAR**

\* Pensilva residents attending will automatically become a CFYLM member on the night, with the usual joining fee paid for by PCA. Existing C-Fylm members are welcome to attend, but new members from outside the parish will need to pay a £6 joining fee (with the first movie free). Membership runs until the end of the year.

# Liskeard Show

at Merrymeet, from 8am

## Saturday 13th July

Main Ring Attractions, Horses,  
Cattle, Sheep, Donkeys,  
Dog Show, Trade Stands,  
Live Music, Shopping/Craft,  
Cornish Food and Homes  
& Gardens Marquees, Pet's  
Corner, Countryside Area,  
Children's Entertainment, Fun  
Fair, Classic Cars, Vintage  
Tractors, Bubble Football,  
Dog Agility, Bar and  
Bouncy Castle



**A GREAT FAMILY  
DAY OUT**

**[www.liskeardshow.org](http://www.liskeardshow.org)**

Adults £10, Children (5-15yrs) £4, Under 5's free  
Family (2&2) £22 Free Car Parking

Dogs permitted on leads

Email: [info@liskeardshow.org](mailto:info@liskeardshow.org)

Tel: 07894 456 099 Registered Charity No. 1170999





**LIGHTHOUSE**  
**COMMUNITY CENTRE**

**PENSILVA**  
**MILLENNIUM HOUSE**

Sports Hall

**Indoor**  
**Inflatable**  
**Party!**

26th July, 2nd Aug, 16th Aug & 23rd Aug  
11-3pm - £2 per hour session

.....

Further details from  
Millennium House 01579 363096



**PENSILVA WILDLIFE GROUP**

**INVITE YOU TO A TALK FROM**

**THE CORNWALL BEAVER PROJECT**

**PART OF THE CORNWALL WILDLIFE TRUST**

**MILLENNIUM HOUSE**

**PENSILVA**

**TUESDAY 30th JULY**

**7.30PM**

**EVERYONE WELCOME**





CHARITY BAND NIGHT  
In aid of Motor Neurone Disease

Featuring

**The Lost Cousins**

MILLENNIUM HOUSE

PENSILVA PL14 5NF

**SATURDAY 17th AUGUST**

**8.00pm**

**FREE ENTRY**

DONATIONS WELCOME



On the weekend 7/8 Sept  
Emma Durrant & Sue  
Horler are taking on the  
Thames Walk Challenge,  
raising money for

**MNDA**

This is 100Km [63Miles]  
from Fulham - Henley





# ***42nd St Ive Show!***

## ***Saturday 7th September 2019***



**At St Ive Village Hall**  
**At 2.30pm**  
**All welcome!!**

# LET'S MEET (chat and eat!)



## @Gorfenna

St. Ive, PL14 3LX



## LUNCH CLUB.

A chance to meet up and socialise. All welcome.



**1<sup>st</sup> Monday of  
every month**

**11.30 – 2pm.**



**£2.50 pay on the day.**

**01579 384810**

Call for information or just come along.

A friendly welcome, a warm lunch and conversation await!

**[www.gorfennacommunity.co.uk](http://www.gorfennacommunity.co.uk)**



ROYAL  
VOLUNTARY  
SERVICE

Social Farms  
& Gardens





## **PENSILVA MEMORY CAFE**

DO YOU HAVE MEMORY PROBLEMS OR CARE FOR SOMEONE WHO DOES? WHETHER IT'S MILD, MODERATE OR SEVERE YOU CAN SOMETIMES FEEL A BIT ISOLATED AND ALONE.



DON'T BE LONELY. KEEP SMILING. THERE ARE MANY OTHERS LIVING WITH THIS CONDITION.

COME AND JOIN US ONCE A MONTH FOR SOME FUN AND LAUGHTER, MUSIC & REMINISCENCES.

WE MEET ON THE FOURTH THURSDAY OF EACH MONTH AT ST JOHN'S CHURCH FROM 2PM – 4PM.

WE ALSO SUPPLY TEA/COFFEE AND CAKES.

DONATIONS OF £1 PER PERSON APPRECIATED

FOR MORE INFO PHONE PAT 01579 363461  
OR CAROLYN 01579 362698

### **Pensioners Lunch**

2 Course Meal plus Tea or Coffee  
**Only £6.00**

Every Tuesday here at Millennium House  
Speak to our reception or  
telephone Millennium House on **01579 363096**



So why not join us for Good  
Food and Good Company, all on  
the day you collect your  
pension?

## **MOBILE LIBRARY**

The County Mobile Library visits our area once a month on Fridays of "Week 3" (NOTE: not necessarily the 3rd Friday of the month).



**Next visits: 5th July, 2nd & 30th Aug, 27th Sept,  
25th Oct, 22nd Nov, 20th Dec.**

**Stops at:**

**The Victoria Inn, Pensilva, 10.25- 10.45am;  
Quethiock bus stop. 11.00 to 11.20am.**

**07460 476619**



**openarms@uymail.com**

**OpenArms Fitness and Massage**

### **Purestretch flexibility and core classes**

Gentle group exercise classes to increase general mobility, flexibility and core strength. I am able to tailor the class to your own specific needs, ensuring it is achievable for all.

Classes at : Pensilva Millennium Centre, 10am on Tuesdays  
and Menheniot Parish Hall, 10am on Wednesdays,

Other therapies: Warm Bamboo Massage and Sports Massage.  
Please call or email for details.



**SEW, KNIT AND NATTER.**

**WHY NOT JOIN US ON**

**THE LAST TUESDAY OF EACH MONTH**

**for sewing, knitting or just for a chat and a  
cup of tea or coffee and cake.**

**We meet at ST JOHN'S CHURCH, PENSILVA from 2pm to 4pm.**

# Wesley Online CENTRE

## Computers, Internet & Support - FREE!

### Opening Times:

Tuesday: 7-9pm

Wednesday: 10am-1pm

Friday: 2-5pm;

Saturday: 10am-12pm

PC access and advice in a friendly and supportive setting.



### For Everyone:

Whether you're a complete computer novice and would like to learn some basics, want access and information to help with JobSearch or UC, the WOC is here to support you with it's PC suite – all for free!

**Liskeard Methodist Church, Barn Street, Liskeard PL14 4BL**

For more info: call 01579 276877 or email [online@liskeardmethodist.org.uk](mailto:online@liskeardmethodist.org.uk)

**NHS**

**Registered**

*Supported by  
local Doctors*



**Started by PATIENTS Run by PATIENTS For the PATIENTS**  
with COPD and long term conditions

**Are you living with COPD or another long term lung condition?**

Why not join our friendly group for company, light exercise & support?

We meet upstairs in Millennium House, Pensilva, Mondays 12.30 - 2.30

First week FREE. Thereafter £3 per week. Refreshments provided.

*If you would like more information please call us*

**Pauline: 01579 532467**

**Jeanette: 01579 363691**



## ***Badminton?***

Come and join our relaxed and friendly group at Pensilva Millennium House

**Mon & Tue 7.30 - 9.30pm**

**Friday 8.00 - 10.00pm**

**For further info phone**

**Nigel or Carol on**

**01579 363594 or**

**07885 798370**

## ***All Being Well***

**Your local, friendly gym.**

Over 18 years working in our local community to improve health, fitness and well being.

Call **01579 363890**, drop in at Millennium House, Pensilva, or email [abwgym@gmail.com](mailto:abwgym@gmail.com)

### Opening hours:

Mon/Fri 10am-3pm & 5pm-9pm

Wed 10am to 3pm

Tues/Thur 9am to 1pm

Saturday 10am to 1pm

**Ask about GP exercise referrals!**

## ***PENMILL ART GROUP***

We are a small, friendly group using all art mediums. If you paint we would love you to join us.

We meet at Millennium House  
**10-2 every Friday.**

Please come & see us or phone Pam on  
**01579 363441.**

## **LISKERRET MALE VOICE CHOIR**

We are currently looking for new members in all sections. No previous experience necessary.

Practice Mondays 7:30pm at the Royal British Legion, Liskeard.

Enquiries to the secretary on

**01579 363881**

Email: [charaton@btinternet.com](mailto:charaton@btinternet.com)

Website: [www.liskerretmvc.org](http://www.liskerretmvc.org)

Charity No. 1120243

## PENSILVA VILLAGE HALL

Anyone wishing to book the hall for meetings, birthday parties or fundraisers please contact Peter or Jackie Browning on **01579 363212** or email **peterpensilva@gmail.com**



Please note that as well as hall rent there is a coin meter for heating at 60p/hr.

We hold a Hall a users and committee meeting on the fourth Monday of every 2nd month starting in January at 7.00pm. Please feel free to come along and support us.

### Organisations that meet in Pensilva Village Hall

Meeting Times	Organisation	Contact Person	Telephone
Mon. 4:00 - 6:00	Brownies	Mrs Martha Oliver	01579 362239
Alternate Wed. 2:30 - 4:00	Wednesday Club	Mrs Jean Conner	01579 363221
Wed. 7:00 & various	Snooker Club	Mr Philip Bond	01579 362091
Thu. 6:00 - 8:00	Guides	Miss Caroline Hambly	01579 363228
Fri. 1:00 - 3:00	MIMS	Chris	01579 343702
Fri. 4:00 - 5:00	Rainbows	Mrs Lynne Bond	01579 362091

### St Ive Institute & Village Hall

Every Wednesday	10:30am to 12 noon 10:30am to 11:30am	Coffee morning Travelling Post Office
First Monday	7:30pm	St Ive Gardening Club
Every Monday & Thursday	7:00pm	St Ive Snooker Club

## **PENSILVA HEALTH CENTRE - PATIENT PARTICIPATION GROUP**

We are a group of patients who meet regularly with the Health Centre to bring forward for discussion ideas, comments and suggestions about your surgery. In the past we have held open days, helped at the flu clinics and participated in a trial People's Commissioning Board Project.

We also organise a Carer's and bereavement group (see below) and a 'Walking for Health' group

**(Contact Marlene Carr 362919 ).**

You can contact us directly or through the Health Centre.

## **PENSILVA HEALTH CENTRE CARERS AND BEREAVEMENT GROUP**

**Are you a carer, bereaved or lonely? Then come along and join our Group. Tea, Coffee and plenty of friendly chat and, when possible, local trips to various venues.**

**Meetings are held every third Thursday of each month at 11.30.a.m.  
Meet in Millennium House car park.**

**For any information please contact Jean Connor 01579 363221**



## **Struggling with Sight Loss?**

iSight Cornwall offers practical help to people living with sight loss in Cornwall including:

Low Vision: Advice for low vision aids

Assistive Technology: Advice on products

Benefits Advice: Assistance to claim entitlements

Equipment Demonstration: Advice on gadgets

Social Clubs & Activities: Links to clubs & activities in the county

For more details Telephone 01872 261110 or visit

[www.isightcornwall.org.uk](http://www.isightcornwall.org.uk)



# **St Ive Methodist Chapel**

## ***Services for July 2019***

<b>Sun 7th July</b>	11am	No morning service
	4pm	Afternoon Tea
	6pm	Chapel Anniversary Concert by Liskeard Community Choir
<b>Sun 14th July</b>	11am	Rev Iris Bray
	6pm	United "Green Shoots" service at Bealbury MC with Rev Steve Wild
<b>Sun 21st July</b>	11am	Mrs Barbara Snowling
<b>Sun 28th July</b>	11am	Local arrangement
	5pm	United Food4Thought Service, Pensilva

"Village Churches Together" on Tuesday 2nd July at 7:30pm at St Ive MC, please ring Keith on 382334 for details. Everyone welcome.

The Chattermakers Craft group will meet on Thursday 11th & 25th July in the Guild Room from 7:30pm. More details from Kathryn on 01579 382334. All welcome.

The Village Church Prayer meeting will be held in the Guild Room on Wed 3rd, 17th and 31st July from 7:30pm. All welcome.

Any queries on any of the above please ring Keith or Kathryn on 01579 382334.

## **St Ive Games Evenings**

**Board Games, Card Games and Table Tennis**

**Next Games Evening will be on**

**Friday July 12th, 2019 at 7pm**

For further details contact Maggie or Wendy on:

**01579 208572**

or email: **wendycarr21@gmail.com**

# St Ive Church

## **Services at 11:15am every Sunday**

July 7th Holy Communion

July 14th Morning Worship

July 21st Holy Communion *Lunch follows this service*

July 28th Family Service *Small pets welcome.*

---

## Other July Events

**Sunday 7th, 14th, 21st, 28th. Cream Teas 2:30pm to 5pm.**

**Fri 5th Produce Market and Bric-a-brac 10:30**

Home made cakes etc, fresh vegetables, locally made pasties, pickles, jams and much more. Farm fresh meat from Trehill Farm Produce.

**Sun 21st Lunch in Church 12.45** All welcome. Only £7 for 2 courses.

As shown above, our Cream Teas continue every Sunday until September. Come along and enjoy homemade scones and cakes, lashings of cream, a very warm welcome, friendly conversation with a chance to put the world and everything else to rights.

Priest in Charge Revd Becca Bell **07899 363458** [revbeccabell@gmail.com](mailto:revbeccabell@gmail.com)

Church Wardens Brian Dwelly **01579 364010** [btdwelly@aol.com](mailto:btdwelly@aol.com)

Richard Connell **01579 363833**

Please let the Priest or Churchwardens know of anyone requiring a home or hospital visit.

Donations for Liskeard Food Bank can be left in the Church each day between 10am & 4pm

## **Alford Joinery - For all your joinery needs** **Specialists in bespoke doors, windows, staircases, conservatories, etc.**

- 20 years experience
  - Large or small jobs
  - All joinery hand-crafted
  - Top quality FSC certified timbers
  - All joinery can be fitted if required.
- 01208 873444 or 07757 666460**  
**[info@alfordjoinery.com](mailto:info@alfordjoinery.com)**  
**[www.alfordjoinery.com](http://www.alfordjoinery.com)**

# ST JOHN'S CHURCH, PENSILVA

## *Services for July 2019*

*Anglicans and Methodists share services at 11 am each Sunday, coffee served before service*

Sunday 7th      11 am   Rev. Chloe Jones. Holy Communion

Sunday 14th    11am   Café Church

Sunday 21st    11 am   Anglican Service

Sunday 28th    11 am   Circuit Service at Liskeard Methodist Church

**5pm   Food for Thought**

**Café Style Church** followed by coffee and chat, Thursday mornings 10am. Everyone very welcome.

**Christian Aid.** A very big thank you to all who contributed to this good cause. £410 was raised from Pensilva.

**Fun Fair.** Wednesday 3rd July, 3:45-4:45 & 5-6 pm at Millennium House.

**Strawberry Tea** on Friday 5th July, 3pm at St John's Church, Bring and Buy. Everyone welcome. Funds for Global Family Mission.

**Prayer Walks.** 7pm on Mon 8th July from St Ives Chapel and Monday 15th July from St John's Church.

**Fellowship:** 7:30pm Friday 12th and 26th July. Contact Carolyn on 362698 for further details

**Saturday Gathering.** 13th July at 10am, St John's Church.

**Sew, Knit & Natter:** Tuesday 30th July, 2-4pm at St. John's Church. All very welcome.

**Memory Café:** Thursday 25th July, 2-4pm in St. John's Church.

**Prayer Group:** 2pm Fri. 15<sup>th</sup> and 19<sup>th</sup> July. Please ring Eileen on 362580 or Carolyn on 362698 if you would like prayer for yourself or someone else.

*For further details of the Services held in St John's, if you know of any illness or need in the village or if you would like your wedding or baptism in the church, please ring: Geoff Cox, 362698 or Frances Tucker, 363718.*

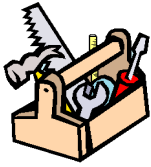


**Collection point open every  
day, 10am to 4pm  
in St John's Church, Pensilva.**



# KEEP IT TIDY

General Property Maintenance  
including Decorating, plus Electrical



**HONEST PRICE  
for  
QUALITY WORK.**



**No Job Too Small**

**Kit Rickard**

18 Higher Glen Park  
Pensilva

**Phone:** 01579 363378

**Mobile:** 07855 699071

**Email:** [KITKeepItTidy@hotmail.com](mailto:KITKeepItTidy@hotmail.com)



**August 17th**

**Music - The Lost Cousins from 3pm**

**Kings Smokey Shufflers from 6pm**

**Gln Cocktails**

**Hog Roast**

**Cornish Ales & Ciders**

**From 2pm rain or shine**

## **DOG GROOMING**

**40 YEARS EXPERIENCE**



**SMALL and MEDIUM Dogs  
Groomed to Your Request**

**LISKEARD AREA  
Inquiries Welcome**

**Call Patricia: 07517 658862**

**38 TO YOU OR TO ME**



Domestic Electrical  
Property Maintenance  
Interior & Exterior Work  
Carpentry :: Decking  
Kitchens :: Bathrooms  
Wall & Floor Tiling  
General Plumbing

**MCCARTHY PROPERTY MAINTENANCE**

**Electrical Safety  
Register** incorporating  
ELECTSA  ECA  
Certification Ltd

**HIGHLY REGARDED LOCAL BUILDER  
COMPETITIVELY PRICED  
COVERING THE SOUTH WEST**

Contact Dominic

07968 599 675

01579 362 945

[info@mccarthypropertymaintenance.co.uk](mailto:info@mccarthypropertymaintenance.co.uk)

[www.mccarthypropertymaintenance.co.uk](http://www.mccarthypropertymaintenance.co.uk)

be inspired  
with  
Slimming World®

**CONTACT HAYLEY**

**07966 370233**

The Pensilva Group meets in Millennium House on Mondays at 10:00am, 5:30pm and 7:30pm .

A Wednesday morning group meets at 09:30am in the Sports club, Liskeard



[slimmingworld.co.uk](http://slimmingworld.co.uk)



## **DO YOU NEED A HELPING HAND?**

Reliable, friendly,  
experienced, mature  
local resident offering  
the following services:



**Cleaning     Ironing**

**Shopping     Light Gardening     Dog Walking**

CRB/DBS checked and fully insured.     Competitive rates.

**Contact Jess:** Telephone or text: 07934 764 327.

Email: [homeangel77@yahoo.com](mailto:homeangel77@yahoo.com). Find us on Facebook







## PENSILVA GARDENER

**20 years experience in Garden  
and Countryside skills.**

**All garden work undertaken.**

**Call Chris on 01579 383047  
or 07792 936413**

## Face Yoga

**Now at Millennium House,  
Pensilva**



**Mondays 10:30am**

Get a more youthful look  
with facial exercises, relaxation,  
massage with essential oils,  
facial acupressure.  
A feeling of Well Being



**FOR ALL YOUR CELEBRATION NEEDS**

Visit our shop: 12 Fore Street, Callington

Call us on 01579 384386

Find us on Facebook or visit our website:

**[www.victoriaeyton.co.uk](http://www.victoriaeyton.co.uk)**

- Helium Balloons - Balloon Arches -
- Bespoke Balloon Designs -
- Personalised Balloons - Partyware -
- Huge selection of greetings cards -
- **Weddings, Parties and Corporate events catered for.**





# GENERAL GARDEN & HOUSE MAINTENANCE

**NO JOB TOO SMALL**

Call to discuss your requirements.  
NO OBLIGATION quotes given.

One off jobs or regular work catered for.

Here are some examples...

## OUTSIDE

MOWING

HEDGE CUTTING

FENCE PAINTING

BOARDER WEEDING

PATIOS & DRIVES

CLEANED

## INSIDE

WINDOWS CLEANED  
INSIDE & OUT.

PAINTING

CLEANING

SHOPPING

IRONING

**CALL ANDREW CARLIN**  
now on:

**07407 323888**

*Thank you.*





## Affordable Counselling

Caring, confidential,  
non-judgemental

- Increased confidence and self esteem
- Help to cope better at difficult times
- Improved relationships
- Clarify confused thoughts & feelings
- Assertiveness
- Personal insight
- Improved emotional health
- Available for youth and adults

**Isabelle McGarahan BA, PGCE**  
**Dip in Therapeutic Counselling,**  
**Accredited ACC, DBS cleared**  
**[www.im-counselling.org](http://www.im-counselling.org) email:**  
**[isabelle@im-counselling.org](mailto:isabelle@im-counselling.org)**  
**01579 344090/07857326229**



**P BRADLEY PLUMBING & HEATING**

Email: [info@pbplumbingheating.co.uk](mailto:info@pbplumbingheating.co.uk)

Web: [www.pbplumbingheating.co.uk](http://www.pbplumbingheating.co.uk)

Facebook: @PDBradleyPlumbingandHeating

**NO JOB TOO BIG OR SMALL**

**24hr Emergency Call Out**

**Based in Liskeard**

**Call Today 07598956760**

## ***"The complete bathroom installation service"***

**New bathrooms fitted,  
floor and wall tiling specialist**

**General Plumbing including:**

- Bathroom makeovers
- Dripping taps and burst pipes
- Pump and cylinder changes
- Radiator upgrades and additions
- Specialist in Leadwork
- No job too small
- No Call out charge



**.Hale**  
*Plumbing*

**Friendly Service, Quality Work**

**NO VAT**

**City and Guilds Qualified  
established 1983**

**Call William Hale on**

**Tel: 01579 362132 Mobile: 07826 699719**



- ✓ LPG Bottled Gas
- ✓ Patio, BBQ & Camping Gas
- ✓ Kiln Dried Logs
- ✓ Coal & Smokeless Fuel
- ✓ Eco Heatlogs
- ✓ No Contracts
- ✓ FREE DELIVERY



**01208 816 827**

[sales@loganslogs.com](mailto:sales@loganslogs.com)

[www.loganslogs.com](http://www.loganslogs.com)

## The Treatment Barn



Treatments include;  
Bowen, Child Clinical Psychology, Colour  
Therapy, Crystal Healing, Hypnotherapy,  
Massage, Reiki, Reflexology

(Massage Therapies include; Swedish, Deep  
tissue, Hot stones, Indian Head Massage)

*Briston Orchard, St Mellion, PL12 6RQ*

*[therapies@treatmentbarn.co.uk](mailto:therapies@treatmentbarn.co.uk)*

*01579 351568*

## MARK FITCH CHIMNEY SWEEP

- \* BRUSH & VACUUM
- \* CLEAN, RELIABLE SERVICE
- \* COVERING ALL S.E. CORNWALL
- \* DISCOUNT FOR MULTIPLE CHIMNEYS
- \* COWLS & GUARDS FITTED
- \* STOVES SERVICED



*Call  
Mark on:*

**01579 350762**

**07773 462643**

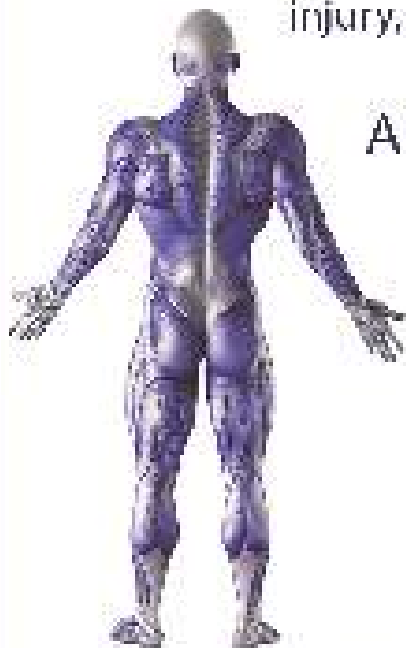




## QUALIFIED RAYNOR MASSAGE THERAPIST

RELAXING AND THERAPEUTIC DEEP TISSUE MASSAGE TREATMENTS

Effective for many different types of chronic pain, sports injury, stress and tension related problems



### APPOINTMENTS AVAILABLE AT

THE WELLBEING CENTRE  
LISKEARD 01579 344090

THE NATURAL WAY  
LISKEARD 01579 345300

Contact : Tina North  
Phone : 07720 832322

[tina-north@massage-therapy-cornwall.co.uk](mailto:tina-north@massage-therapy-cornwall.co.uk)



## R J Gardening & Handyman Services

All aspects of gardening and handyman work undertaken.

- ~Local and Trustworthy
- ~Hard Working
- ~Reliable and Experienced
- ~No job too small
- ~Competitive rates

Contact Raymond on:

07541 229064 or 01579 347622

[raymond\\_pearcegb@yahoo.com](mailto:raymond_pearcegb@yahoo.com)

Find us on Facebook



# SCOTT BERRIDGE

Complete Property Refurbishment & Building Maintenance

**INTERNAL & EXTERNAL DECORATING  
PAPER HANGING • TILING SPECIALISTS  
PLASTERING • PLUMBING • CARPENTRY  
FENCING • DECKING • PATIOS**

- Local Pensilva • 25 years experience in Cornwall.
- Proper job • Clean & Tidy • Good references
- Trustworthy • Excellent prices. • Free estimates.

**scottberridge@me.com**

**07889 218 710 (Daytime)    01579 362 006 (evenings)**

## PENROSS

Rosecraddoc Lodge Holiday Bungalows  
(Between Pensilva & Liskeard)

Ideal for family & friends coming to visit!



Refurbished in 2018. Sleeps 4. Electric, heating, bedding & towels inc in rent. Patio. Free wi-fi. Follow us on Facebook.

Sorry no pets or smoking.

Contact Julie Tucker on 01579 362221 or

email [penhargetfarm@gmail.com](mailto:penhargetfarm@gmail.com)

for 15% discount

## NICOLA GREENE

BSc (hons) Podiatry MChs

HPC Registered Chiropodist/Podiatrist

**Home Visit Practice treating all  
your foot care needs:**

- Nail Cutting
- Corns and Calluses
- Thickened Nails
- Dry Cracked Skin
- Verrucae
- Foot Pain
- Diabetic Foot Assessments
- Wound Care

**T: 01579 590027**

**T: 01752 291565**

**M: 07786164205**

**E: [nicki\\_greene@yahoo.com](mailto:nicki_greene@yahoo.com)**





# R&C



Groundworks and  
Landscapes

Fencing  
Paths & Steps  
Turf & Astro turf  
Driveways  
Retaining walls  
Digger work  
Footings & foundations

Patios  
Rendering  
Decking

**And more**

Free no obligation quotes

**Call Rob on:**

**07518246666 or**

# Window Cleaner

Also any upvc cleaned

i.e. fascias, gutters, etc.

gutters cleared & unblocked

Please phone Rob

**07709 053464**

# Window Cleaner

**Save Costly Energy!**



**SOLARTEC** Windows &  
Conservatories Ltd

**'A' Rated WINDOWS & DOORS  
at BEST PRICES EVER!**



Professionally fitted and finished by us with a  
10 year ins. guarantee.  
In all colours

FENSA  
REGISTERED

**NEW**

**FACTORY SHOP  
SUPPLY ONLY**

For all your windows, doors, conservatories,  
fascia, trims, guttering and sealants

**7-10 DAY TURN AROUND ON WINDOWS,  
DOORS and CONSERVATORIES**

**TEL: 01579 343425**

**FAX: 01579 344500**



WEBSITE: [www.solartecwindows.co.uk](http://www.solartecwindows.co.uk)

EMAIL: [sales@solartecwindows.co.uk](mailto:sales@solartecwindows.co.uk)

**KEEPING JOBS IN CORNWALL**

*PJR Garden Services*

**Phil Rule**

**All aspects of garden  
work - grass / hedge  
cutting, patios, fencing  
etc.**

**Mobile 07387 449004**



**Tom Marshall**

**TM Plastering**

Plasterer and Property Care

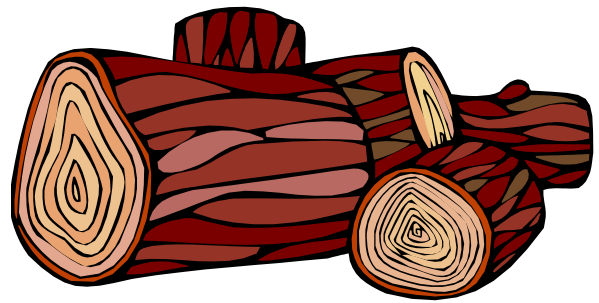
**07544819284**

Tommarshallcornwall@gmail.com

**Free estimates**

- Internal plastering
- Internal / external rendering
- Damp proofing
- Stud Walls
- Patio laying
- Chimney repairs
- Pointing
- Painting

**SEASONED LOGS**



**MIXED LOAD**

**or**

**HARDWOOD**

**Tel. Jonathan**

**Mobile 07966 070725**

**or**

**01579 363157**

**DAVID HEWETT GARDEN SERVICES**

**For all aspects of garden care:**

**lawn mowing, grass cutting,  
strimming, hedge cutting,  
clearance, and more.**

**25 years experience.  
Fully insured.**

**01579 363796**

Alphaplas Limited t/a  
**Trims&Windows**

[www.trimsandwindows.co.uk](http://www.trimsandwindows.co.uk)

**Double Glazed uPVC  
Windows-Doors-Conservatories**

'Conservation' vertical sliders a speciality



Supply only to Trade & DIY or  
Full installation registered with

**FENSA inc**

**10yr insurance backed guarantee**



Email: [alphaplas@btconnect.com](mailto:alphaplas@btconnect.com)

**01752 840078**

Installation team based in  
Pensilva, Looe & Torpoint



# Group Travel

Enterprise Park, Midway Road,

Bodmin, Cornwall

PL31 2FQ

Tel: 01208 77989



## BODMIN M.O.T. CENTRE at Group Travel

Class 4, 5 and 7. Trade enquiries available upon request. Tel: 01208 77989

### 2019 COACH EXCURSIONS & TOURS

17 <sup>th</sup> JUL	STEAM TRAIN TO MINEHEAD *	25 <sup>th</sup> OCT	HALLOWEEN SPOOKTACULAR MYSTERY TOUR
4 <sup>th</sup> AUG	FESTIVAL OF BRITISH EVENTING, GATCOMBE	2 <sup>nd</sup> NOV	BRIDGWATER CARNIVAL
9 <sup>th</sup> AUG	CORNISH SEAL SANCTUARY	16 <sup>th</sup> NOV	LONGLEAT FESTIVAL OF LIGHT
14 <sup>th</sup> AUG	BRITISH FIREWORK CHAMPIONSHIPS	22 <sup>nd</sup> – 25 <sup>th</sup> NOV	TURKEY & TINSEL AT SANDOWN, ISLE OF WIGHT
29 <sup>th</sup> AUG	SEATON TRAMWAY & SIDMOUTH	30 <sup>th</sup> NOV	BUCKFAST ABBEY CHRISTMAS FOOD & CRAFT FAYRE
10 <sup>th</sup> SEP	TAMAR CRUISE TO CALSTOCK	7 <sup>th</sup> DEC	BATH CHRISTMAS MARKET
7 <sup>th</sup> – 11 <sup>th</sup> OCT	AUTUMN TOUR TO OXFORDSHIRE	15 <sup>th</sup> DEC	TOUR OF CORNISH CHRISTMAS LIGHTS
16 <sup>th</sup> OCT	CLARKS SHOPPING VILLAGE & WELLS *	21 <sup>st</sup> DEC	SNOW WHITE @ THE EXETER CORN EXCHANGE
		7 <sup>th</sup> JAN 2020	CINDERELLA @ THEATRE ROYAL, PLYMOUTH

\* In conjunction with North Hill Good Companions Group

**16 TO 70 SEAT COACHES AVAILABLE FOR PRIVATE HIRE. CORPORATE/ VIP, EVENTS & CONFERENCES, WEDDINGS (CAN INCLUDE STAG & HEN PARTY PACKAGE), HOLIDAY TRANSFERS, FUNERALS, DAYS OUT, GROUP TOURS, GOLFING HOLIDAYS & SPORTING EVENTS.**

**FOR BOOKINGS AND A BROCHURE PLEASE CALL**

**01208 77989 / 01208 72669**

Website: [grouptravelcoachhire.com](http://grouptravelcoachhire.com) Email: [grouptravelcornwall@btconnect.com](mailto:grouptravelcornwall@btconnect.com)

## Martin Hoare – Local, Reliable, Competitive



WHEEL DIGGER FOR HIRE  
ALSO AVAILABE 'BREAKER'  
AND NEW CONCRETE  
'CRUSHER BUCKET'

ALL AT COMPETITIVE RATES

GROUND WORKS  
DRAINAGE  
NEW DRIVEWAYS  
SEPTIC TANKS &  
'SOAK AWAYS' INSTALLED



LASER LEVEL FOR HIRE  
QUOTES AVAILABLE



Phone 01579 363517

or

Mob 07863 291213





**INDEPENDENT  
FAMILY  
FUNERAL  
DIRECTORS**



Undertaking your individual  
needs with efficiency,  
compassion and care...

Perfect Choice Prepayment  
Funeral Plans from £3249.00

(Prices correct as at 01.01.2018)

**01579 362358**



Avalennek, Caradon Town,  
Upton Cross, Liskeard  
Cornwall PL14 5AR  
Telephone 01579 363598  
Mobile 07901 538132  
[chrisrounsevell@tiscali.co.uk](mailto:chrisrounsevell@tiscali.co.uk)

**HOG ROAST EQUIPMENT HIRE  
AND MEAT SUPPLY**

Hog Roasts For Those Special Occasions  
Self Catering or Hassle Free Service  
Everything done to your special requirements

**CHRIS ROUNSEVELL**  
**TRADITIONAL BUTCHER**



KV Accounting Solutions

ACCA

## Local Accountant offering fixed fee accounting services

With over 20 years experience, I am a fully qualified, friendly, local accountant

- |   |  |
|---|--|
| ✓ Annual Accounts for Sole Traders and Partnerships | ✓ Self Assessment tax returns                        |
| ✓ Book Keeping & Payroll                            | ✓ iXBRL tax filing                                   |
| ✓ Personal Tax Planning                             | ✓ Tax investigation Fees Insurance                   |
| ✓ Company Accounts                                  | ✓ Company Secretarial work                           |
| ✓ Business Support & Advice                         | ✓ Tax calculations for Sole Traders and Partnerships |

Kate Vaughnley FCCA - Chartered Certified Accountant

Website : [www.kvaccountingsolutions.co.uk](http://www.kvaccountingsolutions.co.uk) or Email : [katevaughnley@gmail.com](mailto:katevaughnley@gmail.com)

Telephone : 01579 364083



**GRAB LORRY HIRE**  
PLANT HIRE & GROUNDWORKS  
**07970 270218 | 01579 344402**

**MORE COST-EFFECTIVE THAN SKIPS  
FOR SOIL, RUBBLE & GREEN WASTE  
REMOVAL!**

CAN REACH OVER WALLS &  
FENCES FOR COLLECTION  
FROM INACCESSIBLE AREAS

SKIP BAGS AVAILABLE FOR  
SMALL JOBS



Come and visit our recently updated  
**Tile & Bathroom showroom** in PENSILVA

We offer a generous discount to all Pump Readers

Unit 24 Pensilva Ind Est, St Ive Road, Cornwall PL14 5RE 01579 362264

**CORNWALL TILE**  
CENTRE

Pensilva Showroom

Open	Mon - Fri	8.30am - 5pm
	Saturday	9.00am - 1pm

Tiles & Mosaics for:

Bathrooms & Kitchens Living Areas Conservatories  
Patios & External Areas Wet Rooms & Spas Swimming Pools  
& All Commercial Applications

 **atlas concorde**

[www.cornwalltile.com](http://www.cornwalltile.com)

**OPEN FOR RETAIL, TRADE & COMMERCIAL ENQUIRIES**





# *The* RACEHORSE INN



## *Gastro Pub*

**Head Chef Phillip Bradshaw**

Ray and Flori welcome you to  
the Racehorse INN

A fine food experience in a convivial  
atmosphere

Our superb Sunday lunch is one to be tried

Open Every Day for Lunch and Dinner

[info@racehorseinn.co.uk](mailto:info@racehorseinn.co.uk)  
[www.racehorseinn.co.uk](http://www.racehorseinn.co.uk)

Take-out: Pizzas & Fish'n'Chips now available



North Hill Village, Cornwall, PL15 7PG

01566 786 916

## J. H. Simmons

Painting & Decorating



**No Job Too Small**

For more information  
Please call John  
01579 362688

7 East Park, Pensilva

## D.J.A. BUILDING SERVICES

ALL ASPECTS OF PROPERTY  
MAINTENANCE BUILDING &  
REFURBISHMENT

- \* Bespoke Furniture and Kitchens
- \* Wardrobes and Bookcases
- \* Garden Sheds, Poultry Houses & Small Animal Shelters
- \* Over 30 years' experience
- \* Fully insured
- \* References available
- \* Free estimates
- \* No VAT

**Call David on 01579  
364050 / 07767662635**

## Westwood Garden Maintenance



*Antony Watts*

*Grass Cutting, Clearance*

*Weeding, Turfing*

*Hedge Cutting*

*Patio Cleaning, Planting*

*Regular Visits / One-off Contracts*

*Residential & Commercial*

**FREE ESTIMATES**

01579 362019    [www.westwoodgm.co.uk](http://www.westwoodgm.co.uk)    07952 094472



# WH BOND

**BOND**  
TIMBER

**BOND**  
AGRI

**BOND**  
HIRE & SALES

**BOND**  
FARMS



**BOND TIMBER**  
BAKE SAWMILL  
TRERULEFOOT  
SALTASH  
PL12 5BW

01503 240 308  
[WWW.BONDTIMBER.CO.UK](http://WWW.BONDTIMBER.CO.UK)

**BOND HIRE & SALES**  
MOORDOWN  
ST IVE  
LISKEARD  
PL14 3NA

01579 383 185  
[WWW.WHBOND.CO.UK](http://WWW.WHBOND.CO.UK)

**BOND AGRI**  
UNIT 4  
LITTLE TRETHEW  
HORNINGTOPS  
PL13 3PZ

01503 240 171  
[WWW.BONDAGRI.CO.UK](http://WWW.BONDAGRI.CO.UK)



# Pensilva Stores

**Amazing Value**

**Premier**  
a great deal more from your local store  
**Mon-Sat. 7:00 AM. – 9:30 PM.**  
**Sunday 8:00 AM. – 9:30 PM.**

- ✓ Fantastic Special Offers every month!!! (See store leaflets)
- ✓ Come and Check out our great deals on Wine, Beer and Spirits
- ✓ Local Produce: Homemade Butter and Clotted Cream, Meat from our local butcher
- ✓ Cornish Fresh Fruit and Vegetables
- ✓ Fresh Bread, Pasties and Cakes
- ✓ Take Away Coffee, tea and hot chocolate
- ✓ Newspapers and Magazines, Greeting Cards
- ✓ Paypoint, Lottery

**\* Free to use ATM \***

**\* Card Payment \***

**Friendly Staff + Service with a Smile !!!**

**Pensilva Stores is a family run business who have been serving local people and visitors for more than 21 years.**

Higher Road, Pensilva, Liskeard, Cornwall PL14 5NQ

Tel: 01579 362547

## MENDOLOGY

### Garage Door Specialist

- ☐ Repairs
- ☐ Servicing
- ☐ Installations

Out of hours service  
call Dave anytime 07974 442645

**MENDOLOGY** COMMERCIAL DOORS LTD  
www.mendologydoors.co.uk

**01579 363760**

# PensilvaCars

01579 363516

- ✓ MOTs Class 4
- ✓ Service
- ✓ Repair
- ✓ Tyres
- ✓ FREE Courtesy Car

- ✓ Car & Van Sales
- ✓ Diagnostics
- ✓ Air Conditioning



**We have offered a supply, fit & balance of tyre service for 10 years at competitive prices.**

**Most of our tyres can be supplied the same day.**

**LOCAL RECOVERY £45.00**

**[www.pensilvacars.co.uk](http://www.pensilvacars.co.uk)**

**[pensilvacars@hotmail.co.uk](mailto:pensilvacars@hotmail.co.uk)**

We can service and repair your car to manufacturer specification, keeping your dealer warranty without main dealer expense.





# KEITH RICHARDS

## Motor Body Repair Specialists

A family run business with fully equipped & maintained workshops & a focus on  
Customer Care

- ♦ Motor Body Repair Specialist
- ♦ Mechanical Repairs
- ♦ Servicing to All Makes & Models
- ♦ Computer 4 Wheel Alignment
- ♦ 24 Hour Recovery Service
- ♦ Renovations & Re-sprays
- ♦ Member of RMI (Retail Motor Industry Federation)
- ♦ Latest Diagnostics (including specialists for VW, Audi, Seat,  
Skoda & Vauxhall)

With over 30 years' experience we aim to provide you with:- Value for Money -  
Friendly Service - Professional Approach - Expert Advice that you Can Trust  
(Visit our website for more details)

Pensilva Industrial Estate, St Ive Road, Pensilva, Liskeard, Cornwall PL14 5RE

Tel: 01579 362593

Email: [keith@keithrichardsmotorbody.co.uk](mailto:keith@keithrichardsmotorbody.co.uk)

Fax: 01579 363194

Website: [www.keithrichardsmotorbody.co.uk](http://www.keithrichardsmotorbody.co.uk)



Wm. Newham & Sons *Est. 1835*

Proprietor Robbie Savill AWCB

## **CHIMNEY SWEEPS & BLACKSMITHS**



**CHIMNEY SWEEPING**

**BIRD GUARDS, COWLS & POTS FITTED**

**CCTV INSPECTIONS & SURVEYS**

**STACK REPAIRS & REBUILDS**

**RIGID STEEL SYSTEMS ERECTED**

**STAINLESS STEEL and PUMPED CONCRETE  
CHIMNEY LINING**

**STOVES SUPPLIED, INSTALLED & REPAIRED**

**FIREPLACE ALTERATIONS & RENOVATIONS**

**FULL RANGE OF FIREPLACE FURNITURE**  
made to order

**01579 347777**

**need somewhere to stay ?  
between homes ?  
family/friends visiting ?**



**ideal for Pensilva  
& St.Ive**

**please call Jackie on  
01579 362216**

# **J.J.CHILD**

**PLUMBING AND HEATING ENGINEER**

**OIL AND GAS APPLIANCE**

**SERVICE , REPAIR AND BREAKDOWNS**

**LANDLORD'S CERTIFICATES**

**OVER 25 YEARS EXPERIENCE**

**CALL JOHN ON 01579 362336**

**MOBILE 07837921086**



**502322**

# Bargain Corner Free Ads up to £50

Ads are free for items up to £50. £5 charge for items over £50. Please ring the Parish Office on **01579 363096** or leave a note at Millennium House reception or email **parishpump@btconnect.com**.

**\*\*\*Please let us know when your item has sold\*\*\***

**Pine Bookcase** with three shelves. H49", W33" D10½". **£15.** **01579 362643.**

**Easylife Cobbled Stone Edging** for 'stone' border to create any shape up to 8' long per box. 8 boxes of 10 sections. **£20.** **01579 362128** (Rilla Mill)

2 x Medium Weight **Car Ramps** **£20.**  
**Push Mower** **£5.**  
**01579 363199**

Beige **Easy Chair** VGC. **£35**  
**01579 346492**

Sit Up bench – adjustable incline height, folds flat for storage - **£10**  
**01579 363573 or 07841 717913**

Maximuscle **home gym** system **£100** ono.  
Black leather **chaise longue**. Excellent condition. **£100** ono.

**Scelextric** Sport Le Mans set. Still in box. Great condition. **£100.**

**Plastering gear:** 110v paddle mix with transformer, various trowels, hawk and other bits. Good for DIY etc. **£70** ono.

EasyCamp Tour Ligata **6 berth tent**. Used only 3 times. **£100** or offers.

Dark brown **leather chair**. **£50**

**07980 380224 - Pensilva area.**

Hi-Gear Aura 3 **tent**, green, ideal for 2 people, fully waterproof with sewn-in groundsheet. Tall enough to stand up in comfortably. Inner bedroom. Can be erected by one person. Cost £179.99. Only used for 8 nights. Now offered for **£80**  
**01579 362574 / 07887 787202 (Pensilva).**

2 x 225/45 r17 **used tyres**, good tread. **£20** the pair.

Set of **Snow chains**, new and unused fit 14" to 19" rims, self adjusting. **£40**

Pensilva **01579 362207**

**Door Canopy**. Brand new still in box. Black sides, white roof. **£15.**  
Wooden **hall seat** with cushion. Two-door opening for shoes. **£15**  
Call **07856 534691** for more details.

Brown speckled **carpet**, 2m x 5m. Brand new (over ordered). **£50.**

Arch design **headboards**. **£20 each or £35 pair.**

**01579 362211**

**2-Drawer Filing Cabinets (2)** H 710mm, W 475mm D 620mm. Could deliver in local area **£25 each**

**07796 091259**

Brand new, never worn, **motor bike helmet**, with visor and inside sun visor, red, grey & white. Size medium. Paid £90, will accept **£30** or nearest offer.

**07980 284002**

Wood-framed **mirror** 2'6" x 3'7". **£10.**  
**01579 363812**

**Artist Easel** by Windsor & Newman for use on table top or work top. GC. **£10.**  
Tom Tom 1 Complete **satellite navigation system**, with plug and go, Spoken Instructions and GB maps. **£30.**  
Clartas 10x40 wide angel rubber protected military style **binoculars** & case **£25.**  
2 large size lightweight **camouflage military jackets**. **£10 each or £15 both.**  
**4 Cobblers Shoe Irons**, including a rare ladies shoe iron all in VGC. For use or ornamental displays. **£30.**  
**015679 384658**

**Mobility Walker** Hardly used. Cost about £80 new from Argos. Will sell for **£40**  
**18 Demijohns £1 each. 01579 362001**

1 x HAMA Omega Premium **photo/video tripod - £23**  
1 x VELBON CX Mini **photo/video tripod - £15**  
1 x Heiwa Sumo Junior TH250 **photo/video tripod - £10**  
All items in very good used condition.  
**Pensilva 01579 362207**

**Leather black briefcase** 17½" x 12½" x 4". **£10 o.n.o.** In good condition.  
**01579 362846**

**Please let us know when your item has sold**  
parishpump@btconnect.com, or phone 01579 363096 or leave a note at Millennium House.

# Art Classes *with Yvette*

**Millennium Centre, Pensilva.**

*If you have always wanted to Sketch or Paint 'Why Wait'??*

*Come and Join one of my classes, they are fully structured, suitable for both beginners and improvers.*

*Kick start your hobby in a 'friendly and relaxed' atmosphere, aimed at 'enjoyment'.*

**Drawing Class - Wednesday Mornings 9.30am to 12.30pm**

**Watercolour Art Class - Wednesday Afternoon 1.30 to 4.30pm**

*Other Classes & One day workshops or demonstrations also available.*

*Contact Yvette on 07886 343621 or*

*email: yvettewiltshire@sky.com website: www.artwithyvette.com*



## What's on in St Ive Parish ?

WHAT'S ON	WHEN	CONTACT DETAILS
<b>MILLENNIUM HOUSE</b>		
Aikido	Thursday 7:00pm	
Antique & Collectors Fair	4th Sunday Monthly 10:00 - 4:00	
Badminton Club	Mon & Tues 7:30pm. Fr. 8.00pm	01579 363594 (Carol & Nigel)
Book Exchange	Daily	01579 363096
Pensilva Breathers	Monday 12.30pm - 2.30pm	01579 532467 Pauline
Country Dancing	Alternate Thursdays 8.00 - 10.00pm	01579 382402 Ray Buckingham
Drawing Class	Wednesdays 09.30am - 12.30pm	07886 343621 (Yvette Wiltshire)
Face Yoga	Monday from 10:30am.	lilianjones@hotmail.co.uk
Ladies Netball	Friday 09.15 - 10:15am	07985 387472
Penmill Art Group	Friday 10am - 2pm	01579 363441
Pensioners Lunches	Tuesday 12:00 - 2:00pm	01579 363096
Short Mat Bowls	Thursday 7:00pm	01579 208528
Watercolour Art Class	Wednesdays 1.30pm - 4.30pm	07886 343621 (Yvette Wiltshire)
Wildlife Group	Quarterly	01579 362539 ( Hilary)
Woman's Institute	2nd Wed Monthly 7:15pm	01579 362531 (Jean Hoare)
Yoga	Wednesday 7:00pm	01579 344464
<b>PENSILVA VILLAGE HALL</b>		
Brownies	Monday 4:00 - 6:00pm	01579 362239 Martha Oliver
Pensilva Wednesday Club	Wednesday 2:30pm	01579 363221 Mrs Jean Conner
Pensilva Snooker Club	Wed 7:00pm + Various times	01579 362091 Phillip Bond
Guides	Thursday 6:00 - 8:00pm	01579 363228 Caroline Hambly
MIMS	Friday 1.00 - 3.00pm	01579 343702 (Chris)
Rainbows	Friday 4:00 - 5:00pm	01579 362091 Lynne Bond
Rangers	For Info	01579 362982 Kirsty Oliver
<b>PENSILVA PRE-SCHOOL</b>		
Pensilva Pre-School	Monday-Fridays 9:00 - 3:15 (session times available)	07890 023924 Mrs Suzanne Kinsman (Manager)
Tiny Tots Toddler group	Friday 9:15 - 11:15am	07890 023924 Mrs Suzanne Kinsman (Manager)

## ST IVE INSTITUTE

Gardening Club	1st Monday monthly 7:30pm	01579 382762
St Ive Snooker Club	Monday & Thursday 7:00pm	01579 382315 R Bunkum
Art & Craft Group	Tuesday 1:00 - 5:00pm	01579 362216 (Jackie)
Post Office	Wednesday 10:30 - 12 noon	
Coffee Morning	Wednesday 10:30 - 12:00	
St. Ive Singing Group	Thursday 4.00 - 5:30pm	01579 382341 (Clare)

**St Ive Institute available for hire, £3.50 per hour.** This includes the use of the kitchen & electric (excluding wall heaters, which are on a £1 coin meter)

**Contact Sue Sedgewick on 01579 383291**

Hall meetings will now be held quarterly on the second Tuesday of the month in January, April (includes AGM), July and October.



## ST IVE & DISTRICT GARDENING ASSOCIATION



**Meetings in St Ive Village Hall 1st Monday in the month at 7.30pm**

**Monday 3rd June** A visit to the garden at **Links Lodge**, Golf Links Road, Yelverton, PL20 6BN. Assemble in St Ive car park to leave at 6.40pm.

**Monday 1<sup>st</sup> July** A visit to the garden at **Dye Cottage**, St Neot, PL14 6NG. Assemble in St Ive car park to leave at 6.50pm. Car share £1.50. Refreshments : donation. Entry £4.00

**Monday 5<sup>th</sup> August** A visit to the garden at **Mary Newman's Cottage**, Saltash, PL12 4DT. Meet St Ive car park to leave at 6.30pm. Car share £1.50. Refreshments: £1.50. Entry £2.50



*Visitors and new members are always welcome to join us.*



### ART AND CRAFT GROUP

We are a small friendly informal group who enjoy doing art and craft. If you paint or do any type of craftwork and would like to join us we'd love to welcome you.

There is no 'teaching' but help/advice is always forthcoming!

We meet at St. Ive Institute Hall from 1.00pm to 5.00pm Tuesday afternoons.

Only £3.00 for the afternoon plus 50p for tea/coffee and biccies.

If you are interested please give Jackie a call on **01579 362216**.

We look forward to meeting you.

# Pensilva Post Office

Located through the Café on the 1<sup>st</sup> floor of Millennium House



## Opening times:

Tuesday	-	9am to 1pm
Wednesday	-	9am to 12 noon
Friday	-	9am to 12 noon

## ***THE MEL BAR*** ***MILLENNIUM HOUSE*** ***Licensed Free House***

**GUEST ALES - LAGERS - CIDERS - WINES - SPIRITS**

### **Opening Hours**

Mon - Thu	-	5 pm to 10 pm
Friday	-	3 pm to 10 pm
Saturday	-	12 noon to 11 pm
Sunday	-	12 noon to 11 pm

**PLEASE NOTE FRIDAY OPENING HOURS**

**01579 363096**