

THE PARISH PUMP

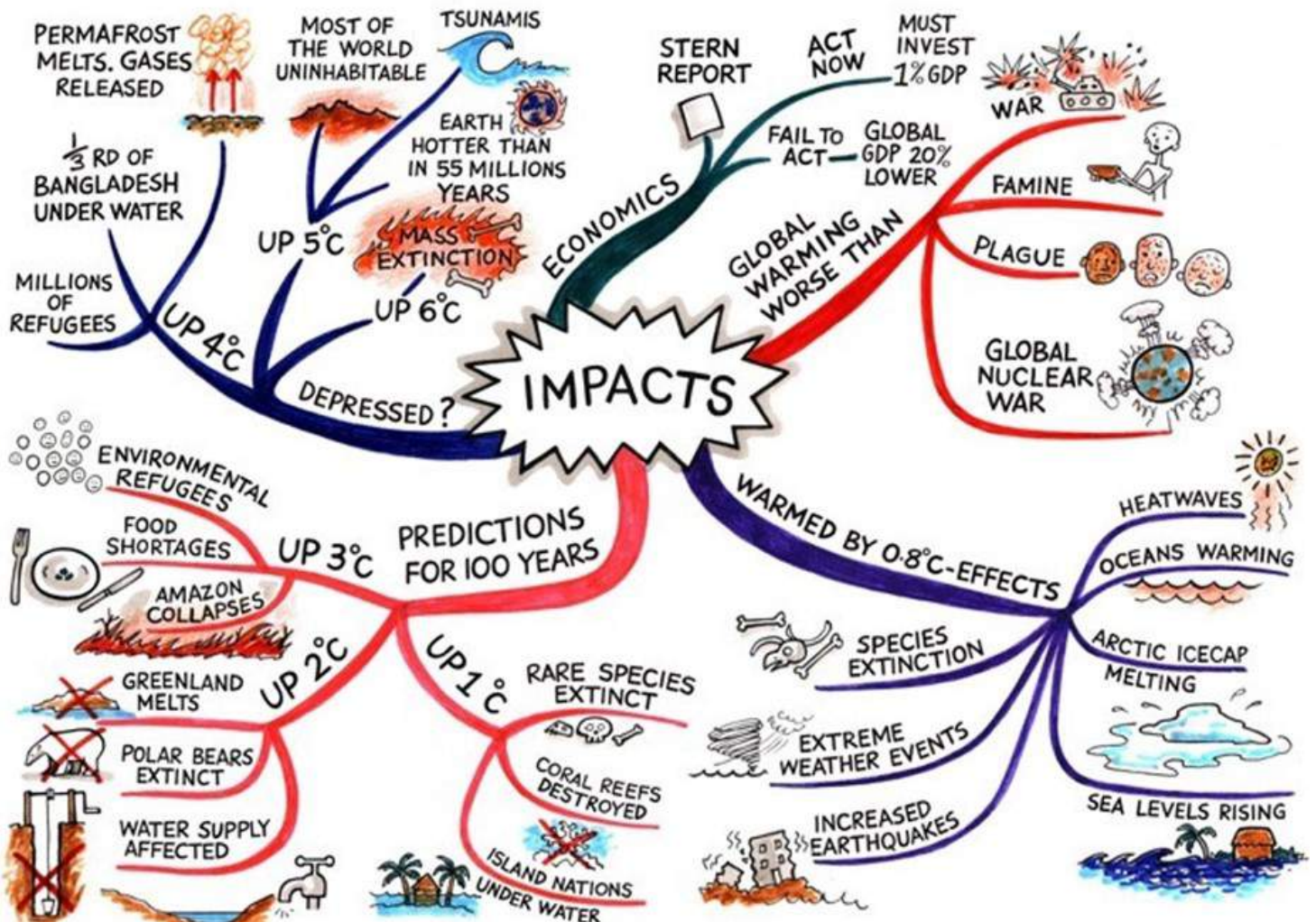


April 2019
Edition 449



The Newsletter for the Parish of St Ives

St Ives Parish Council follows Cornwall Council and dozens of other county, town and district councils, in declaring a climate emergency. (Report inside)



Disclaimer

The articles appearing in this magazine do not necessarily reflect the views of the Parish Council nor of the Parish Pump Editor.

Parish Councillors Telephone List

Peter Haimes (chair)	01579 362459	Alan Moss (vice-chair)	01579 362064
James Bruce	07411 192645	Marlene Carr	01579 362919
Martin Corney	01579 382450	Angie Haimes	01579 362459
Rosemary Farley	01579 384810	Tony Hodson	07973 536964
Nigel Libby	07968 891814	Kath Parkes	01579 362005
Ivor Vaughan	07979 934604	Craig Vaughnley	01579 364083

Samantha Reilly

Sharon Daw (Cornwall Councillor) 07837 379305 slash.dash.daw@gmail.com

Meetings of St Ive Parish Council

2nd Monday monthly: Parish Council Meeting, alternating between St Ive Village Hall and Millennium House (please refer to notice boards for the agenda showing start time and venue each month). Any changes to the regular dates (i.e. Bank Holidays etc.) will be publicised accordingly.

4th Tuesday Monthly: Parish Council Planning Committee Meeting, 7 pm at Millennium House Pensilva, followed by the Parish Council Finance & Administration Committee Meeting commencing at 7.30 in the same venue.

Date of Next Parish Council Meeting

Monday, April 8th, 2019



Devon & Cornwall Police
Building safer communities together



101

Minicom 18001 101

Police Community Neighbourhood Office

Your Community Support Officer is PCSO Steve Edser 30173.

email: CIOSNBMLiskeard@devonandcornwall.pnn.police.uk

To report a crime call 101 or go to www.devon-cornwall.police.uk

In an emergency call 999

Contact details for St. Ive Parish Council and for Millennium House

Address for correspondence: Millennium House, Century Square, Pensilva PL14 5NF

General Parish matters should be raised initially with the Parish Clerk, Jenny Hoskin, who will present them to the Parish Council.

Telephone: 01579 363096, email: stiveparish@btconnect.com

For accounts matters for the Parish and for Millennium House contact John Body, Finance Officer: 01579 362102, email: millenniumhouseadmin@btconnect.com

Millennium House enquiries and reservations: 01579 363096

email: millenniumhouse@btconnect.com.

On the web: Millennium House Website: www.cornwallvenue.com

Parish website: st-ive-parishcouncil.gov.uk Facebook: facebook.com/stiveparishcouncil

Parish Pump Information and Contact Details

To contact the editor please email: parishpump@btconnect.com

or phone the Parish office: **01579 363096**.

Hardcopy submissions by post or by hand to the Parish office, Millennium House.

Softcopy submissions: By email to the editor in MS Word, MS Publisher, pdf, Tiff or jpeg. Please use A4 pages and minimum 16 point font as the Pump is initially produced in A4 size and reduced to an A5 booklet at the printing stage. If in doubt please contact the editor.

Current Advertising Prices including VAT at 20%

Per issue: Quarter Page £7.50 Half Page £15.00 Full Page £25.00

10% discount for 12 months paid in advance.

Bargain Corner free ads by email to the editor or drop off at the Parish Office.

Deadline for the Parish Pump is STRICTLY 15th of every month

THE MEL BAR

Relax and wind down
at the Mel Bar, Millennium House



From the Editor

I was wrong last month about what the weather was going to do this month. In fact I am writing this on a beautiful Spring day in late **March**, confident in the expectation that, this time **next** month, I will be writing something similar on a bitterly cold Winter day in late **April** :) In which case I would have been right last month, only one month out .

Joking aside, as you all know, the weather and the climate are not the same thing. Please find a moment to read the item about the climate initiative on page 7. If everyone does their bit we can make a difference. If everyone leaves it to everyone else, nothing good come of it.

All the best - Joe

From our Community Police Officer Steve Edser.

Dog-walking on Bodmin Moor

Please remember that from March 1st to July 31st all dogs must be kept on leads at all times while walking on the moor, and leads must be no more than 2 metres in length.

Millennium House Opening Hours

Reception

9am till 2.30pm Monday to Friday

Community Coffee Shop

See separate notice on next page

Bar

5pm till 10pm Monday to Friday
12am till 11pm Saturday and Sunday

If no-one is available please leave a message in our **letter box** at the front of the building or on our answer phone by calling **01579 363096**.

COMMUNITY COFFEE SHOP *MILLENNIUM HOUSE, PENSILVA*

OPENING HOURS

Monday	10.a.m. to 1.p.m.
Tuesday	9.a.m. to 1.p.m.
Wednesday	9.a.m. to 1.p.m.
Thursday	9.a.m. to 1.p.m.
Friday	9.a.m. to 1.p.m.

Open to small groups (pre booked) for Cream Teas - Buffet - Lunch Bites

The Coffee Shop is run by volunteers who aim to offer a cheery, relaxed atmosphere for you to sit and enjoy a cuppa. We adapt our service in response to feedback from members of the public, whose support we rely on to continue. We would like to offer our sincere thanks for your support of the Coffee Shop.

Pensilva Carnival - Carnival Queen, King & Flower Girl

Entry forms are available at Millennium House reception and must be returned by 3pm on May 3rd, 2019.

Don't forget, **Carnival is on Saturday, July 6th**. Enquiries or offers of help to Ruth at MH reception or Karen on 01579 362196.

DEFIBRILLATOR TRAINING at Pensilva and St Ive

The Parish Council has installed two Defibrillators in the two wards. One at Millennium House, the other at St Ive Village Hall.

There is another opportunity for training on how to use the newly installed Defibrillators, date to be confirmed. Please register your interest by contacting the Parish Clerk on 01579 363096.

Supporting Guiding & Scouting Activities in Pensilva **200 CLUB Draw Results for February 2019**

1st No. 3 Mr P Elliot	2nd No 153 Mrs J Mann	3rd No 30 Mrs A Worden
--	--	---

Thank you for your support

CHAIRMAN'S COLUMN

At last spring is here and the days are getting longer, and with it I hope comes the warmer weather. March saw a few new things at Millennium House. It started with Yn Poynt Da presenting their comedy revue, which was very well received, and they have promised to make it an annual event. We also had a presentation given by the team from the Caradon Observatory, this was a very interesting evening, but marred by the poor weather, which prevented any outdoor observations. However, the team said that they would look at coming back again, then hopefully we may have better weather and more people attending to enjoy the benefits our dark sky status gives us when viewing the night sky. On the 5th and 6th of May as part of Millennium House birthday celebrations, we will be having a beer festival along with a Chris Rounsevell hog roast. On Monday the 6th there will also be family entertainment. (more details elsewhere in the Pump).

At the Parish Council meeting in March the Council debated the declaration of a Climate Emergency, in line with that declared by Cornwall Council earlier in the year. It calls on us to try and reduce our carbon footprint, and we would encourage all of us to try and reduce our reliance on fossil fuels, even switching off unwanted lights helps, and it saves money!! (every little helps).

A final note, after a long quiet spell on the dog-fouling front, we are again getting complaints. PLEASE pick up after your dog and think of others who may be walking the same route after you.

Pete Haines

PUBLIC MEETING to discuss the implications of the **Climate Emergency Declarations** passed by St Ive Parish Council.
7pm Friday 12th April 2019, at Millennium House Pensilva

CLIMATE EMERGENCY DECLARATION

The following motion, proposed by Councillor Martin Corney and seconded by Cllr James Bruce, was approved by St Ive Parish Council at its meeting on March 11, 2019.

“St Ive Parish Council notes that Cornwall Council declared a Climate Emergency on 22nd January 2019 and we also declare a Climate Emergency. We will do our best to reduce carbon emissions and encourage the move to renewable energy within our parish. We also call upon our Member of Parliament, Sheryll Murray, to pressure the government to take measures, both nationally and internationally, to move to zero carbon in timescales recommended by the Intergovernmental Panel on Climate Change’s (IPCC) special report on Global Warming, published Oct 2018.”

The image on this month’s cover charts the catastrophic consequences of allowing global temperatures to continue to increase. Martin Corney writes: “The graphic is already out of date since a rise of 0.8C has been passed and we are at the +1C stage if not +1.1C. Some might deny that climate is changing because of human activity. No! Even the BBC now excludes such deniers from the debate. Others may say that this is too big a problem for a Parish Council to solve alone. This is true, but it is no reason for us not to do what we can, and by joining with all levels of government the problem can, and must be solved.”

Just four days after our Council passed the resolution, Intense Tropical Cyclone Idai made landfall on the coast of Mozambique, with devastating consequences. Idai may turn out to have been the deadliest storm ever to have hit the southern hemisphere. Climatologists predict that extreme weather events such this will only get more frequent and deadlier as global temperatures continue to rise. The point where our actions will no longer be able to reverse the trend may not be far off. We must all do our bit..

The Parish Council will be holding a public meeting at Millennium House on Friday 12th April at 7 pm to discuss the way forward. This will probably involve restarting the process of creating a Neighbourhood Development Plan (NDP) for St Ive Parish, but may also involve setting of a committee to take actions that would be outside the scope of an NDP or need acting on more quickly than would be delivered by the NDP.

The Editor

The 42nd St Ive Village Show

Saturday 7th September 2019

opens at 2.30pm in the village hall

Entries open to all

**Adult classes for Flower Arranging, Cookery, Vegetables,
Cut flowers, Houseplants, Handicrafts, Photography, and Art**

Young people's classes (up to 16yrs)

Entries to be submitted between 6.00 pm and 8.00pm on Thursday 5th
September or in advance

Schedules available from 1st April

by email from Sally at sales@keasonplantservices.com

from Coffee Morning 10.30 to 12.00 on Wednesdays in the village hall

or from Jayne (382512) Veronica (382762) Katherine (382334)

St Ive and District Gardening Association

St Ive Games Evenings

Board Games, Card Games and Table Tennis

We are starting a monthly games evening for all ages
at St Ive Village Hall

commencing early May

For further details contact Maggie or Wendy on:

01579 208572

or email: wendycarr21@gmail.com

Pensilva WI March report

Electrics, candles, cooking, the three main causes of fire in the home you would think, right? Wrong – according to Martin and Graham from Liskeard Fire Station when they came to speak to the ladies of Pensilva WI about safety in the home, it's men, women and children! Without human interference there would be far fewer house fires. They gave us a lot of good advice to help keep us safe and therefore prevent us having to call out the fire brigade. Good smoke alarms help of course, as do carbon monoxide alarms for those with gas or wood-burning appliances. They also said thinking out an escape route is useful so should the worst happen you would be able to make it out of the house quickly. It made us all query how safe our homes really are. President Jean Hoare thanked both the fire officers for their help and guidance.

A new member, Margaret Hanger, was warmly welcomed by President Jean Hoare.

There were many birthdays this month, Eileen Adgo, Janet Sheer, Elaine Burden, Violet Ann Gold, Jenny Rendle, Mary Yates, Jill Pascoe, Pauline Millar and Sheila Wherly.

Monthly competitions: Flower of the month 1st Jill Pascoe, 2nd Frances Tucker, 3rd Mary Yates. Picture of fire or water 1st Cherry Woodhouse, 2nd Verna Dawe, 3rd Irene Elliott.

Dates for your diary:

Wednesday 17th April – Spring Countdown, Redruth

Thursday 18th April – Liskeard WI Group social evening, Wesley Church Hall

Friday 10th May – Pensilva WI Birthday dinner, The Victoria, Pensilva, 6.30 for 7.00pm.

Saturday 11th May – Village litter pick, meet Millennium House 10.30am

Saturday 18th May – 'Fly like a bird', Eden Project.

April's meeting will be held on Wednesday 10th at 7.15pm at Millennium House, Pensilva where the speaker will be Jo Delbridge who will tell us 'what a judge looks for' to help when entering competitions, which should be most helpful to us all. The competition will be 4 home-made scones. All visitors will be made most welcome, so we hope to see you then.

THE Growing Project

PENSILVA

March has certainly felt more spring like than Chilly February but our maximum/minimum thermometers in our polytunnels are still reading down to zero overnight, we have plenty of seedlings coming on waiting to go either in the polytunnels or in our outside beds. At the moment we have tomatoes, bell peppers, chilli peppers, cucumbers, squashes, pumpkins, courgettes, herbs and various brassicas being brought on by project volunteers and friends.

We have successfully used a rainwater drip watering system in our larger polytunnels for many years and are currently planning a similar system for our smaller polytunnel, the difference will be a huge 1000 litre IBC tank rather than the water butts on our existing system. Last Wednesday on our volunteer day the tank was carried across our site by our volunteers and also visitors from Pentiddy (that turned up at the right moment !). The tank has now been secured into place and we are currently plotting and planning the next stage with possibly 3 lines of hoses to water all of the beds.

We would be grateful for donations of garden tables for our volunteers to sit outside as the weather improves, sadly we have lost both of ours when they were battered by gales in the autumn.

We are currently collecting eggshells in a bin alongside our kitchen compost bin just inside our gate, these are crushed and sprinkled on the raised beds in our polytunnels to keep the slugs off the plants.

Our volunteer days are continuing on Wednesdays 10-2pm and Thursday 12-3pm with jobs for all abilities and we would be delighted to welcome any new faces.

Our stalls are currently well topped up with our own Purple sprouting broccoli, chard, kale and salad alongside a selection of organically grown vegetables from Riverford and also local suppliers.

Our contact details are: Email growingprojectpensilva@gmail.com

Phone : Admin 07854 353865 and 07398 828783 for veg boxes

Pensilva Country Dance Club

We are a small, friendly group that meets once a fortnight in Millennium House, Thursdays, 7.30pm to 9.30pm. If you would like to join us to try country dancing, we would give you a warm welcome. No previous experience needed!

For more information ring Jill 362819 or Liz 340942.

Pensilva Health Centre



Pensilva Health Centre is changing its opening hours from 1st April 2019. It will be open from 8am until 6pm - Monday to Friday. This means that you are able to call in to make your appointments from 8am instead of 8.30am.

Also did you know that Pensilva Health Centre had a website? You can access it at this online address: <http://www.pensilvahealthcentre.co.uk/> There you can find regular updates, including information about all services at the Health Centre as well as who works there!

And if you have any suggestions, want to leave feedback, or if you have an issue then you can write in on following email address :

feedback.oaktreeandpensilva@nhs.net . This will go directly to the new Practice Manager of both Pensilva Health Service and Oak Tree Surgery. Her name is Amanda Tamblin and she wants to hear from their patients, whether good or less good!

RELAY FOR LIFE 2019

This annual family fundraiser for Cancer Research UK is on May 25/26th. Our local team, Pensilva Posse will be holding a meeting **Tuesday April 9th** at the The Victoria Inn at 7pm. Everyone welcome to join us to find out more,. All offers of help greatly appreciated, from joining the team to donating raffle prizes or baking cakes.

Many thanks.

Contact Alex 07985387472 , email info@liskeardrelay.org.uk or see you at the meeting.

FACE YOGA CLASSES COMING TO PENSILVA AND GOLBERDON

Some of you may not know what Face Yoga is; others may already know or might have seen the recent Twinstitute programme on TV, where the twin doctors compared Face Yoga against a £1000 facial and scientifically tested the results. Within a month, Face Yoga made them look 3 years younger than the £1000 facial!

Weekly Face Yoga classes run by Lilian Jones will start after Easter at Pensilva Village Hall and Golberdon Village Hall. The classes combine facial exercises, acupuncture, massage, relaxation, breathing and visualisation techniques for your mind, body and soul. Face Yoga is a natural way to make you look and feel younger and healthier. As an aromatherapist, Lilian will mix specific oils that improve the quality of your skin. Lilian has been practising yoga for nearly forty years, fourteen of them as a teacher, so the Face Yoga classes will put all the skills she has learned into practice. Come along and do something for yourself. Relax and look forward to more youthful looks as you turn back the age clock.

The classes will cost £6 or £50 if you book 10 and start on:

Pensilva Village Hall	10.30am	Monday 29 April, 2019
Golberdon Village Hall	10.15am	Wednesday 24 April 2019

07460 476619



openarms@uymail.com

OpenArms Fitness and Massage

Purestretch flexibility and core classes

Gentle group exercise classes to increase general mobility, flexibility and core strength. I am able to tailor the class to your own specific needs, ensuring it is achievable for all.

Classes at : Pensilva Millennium Centre, 10am on Tuesdays
and Menheniot Parish Hall, 10am on Wednesdays,

Other therapies: Warm Bamboo Massage and Sports Massage.
Please call or email for details.

St Ive and District Gardening Association

We were taken on a visual tour of Cornwall at our March meeting when Dorothy Kirk shared her enthusiasm for the work of the artist Joseph Turner here in the 18th century. Turner travelled around Cornwall sketching notable views which he then used to create some of his famous paintings. Dorothy has researched his journeys matching sketches to paintings and to modern photographs of the same views so we could see that things have changed only superficially.

At our next meeting on Monday 1st April we will be out and about again being guided on a daffodil walk in the gardens at Cotehele, St Dominick. We will leave St Ive car park at the earlier than usual time of 5.35pm.



Collection point open every day, 10am to 4pm in St John's Church, Pensilva.

MOBILE LIBRARY

The County Mobile Library visits our area once a month on Fridays of "Week 3" (NOTE: not necessarily the 3rd Friday of the month).

Next visits: Apr 12th, 2019

Then May 10th, Jun 7th.



Stops at:

**The Victoria Inn, Pensilva, 10.25- 10.45am;
Quethiock bus stop. 11.00 to 11.20am.**



SEW, KNIT AND NATTER.

WHY NOT JOIN US ON

THE LAST TUESDAY OF EACH MONTH

for sewing, knitting or just for a chat and a cup of tea or coffee and cake.

We meet at ST JOHN'S CHURCH, PENSILVA from 2pm to 4pm.

Ruth and Colleen's Monthly

BINGO

At Millennium House

on Tuesday April 2nd

Then on May 7th

Eyes down at 7:30pm

Over 18's only

£££ CASH PRIZES £££

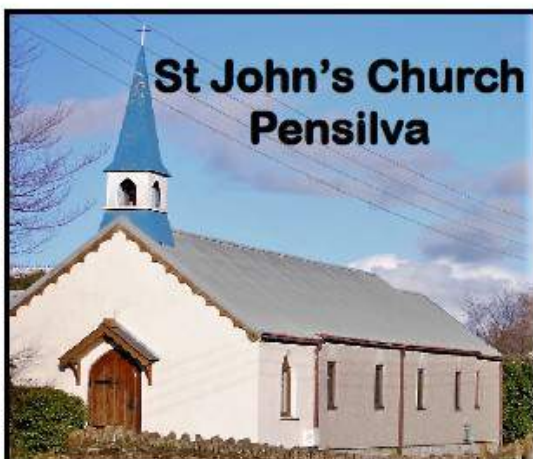


LENT LUNCHES

Thursday 4th April
and

Thursday 11th April

Between 12.00 and 1.30 pm



Please come & enjoy a simple meal
of homemade soup
with a roll & cheese,
coffee or tea.

Suggested minimum donation £3.50

MILLENNIUM HOUSE EVENTS PRESENTS

EASTER



GAMES FUN PRIZE

**APRIL 3RD / EYES DOWN 7:30PM
AT MILLENNIUM HOUSE, PENSILVA**

millenniumhouse.org.uk

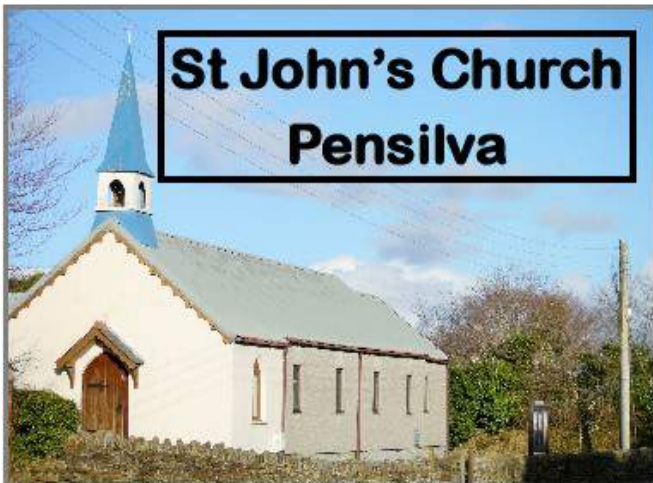
Princess Rd, Pensilva, Liskeard PL14 5NF





EVERY THURSDAY 4-5.30PM
ST IVE VILLAGE HALL

NO EXPERIENCE NEEDED, ALL WELCOME
FROM POP TO CORNISH SONGS. WE ONLY SING IT IF IT'S FUN!
PLEASE CONTACT CLARE: 01579 382341
OR EMAIL: CONTACT@CLARENORRISH.COM
WEBSITE: clarenorrish.com



Holy Saturday
20th April
2.00 to 4.00 pm



Easter
themed activities
followed by refreshments

FREE ENTRY

MILLENNIUM HOUSE

BEER FESTIVAL!



SUNDAY, MAY 5TH 2019

FROM 12PM AT MILLENNIUM HOUSE

HOG ROAST BY CHRIS ROUNSEVELL



**Can't make it Sunday? Don't worry,
we'll have a Family Fun event on Monday too!**



MILLENNIUM HOUSE
EVENTS COMMITTEE
PRESENTS



MAY 6TH 2019
12-5PM

MAY DAY TEA PARTY

TEA, COFFEE, CAKES AND PASTIES

LIVE MUSIC

BOUNCY CASTLE, FACE PAINTING

AND MORE

FREE ENTRY



**Bank Holiday
Monday May
6th
1pm – 4pm**

Blossom Fair

**Linkinhorne Parish Hall
Upton Cross PL14 5AX**

**Craft Stalls
Trees and Plants
Local Produce
Music
Coffee and Cake**

**Organised by Caradon Orchard Group
www.caradonorchardgroup.org
info@caradonorchardgroup.org**

Pensilva Wednesday Club RVS

Meet in Pensilva Village Hall at 2.30.p.m. on alternate Wednesdays.

All Adults welcome to join - £1 per meeting - Refreshments -
Various Activities - Entertainment - Coach Trips - Raffle

Coach Trips planned for the year – also open to non-members

15th May Par Market and The Range
10th July Atlantic Village
13th Nov Truro

Anyone is interested in any of the above trips, please contact Jane Mann on 01579 362960

Mar 20th meeting Albert Hall Remembrance
Apr 3rd meeting Climbing Mount Everest
Apr 17th meeting Easter Celebrations

For Information please contact Jean Connor on 01579 363221

An evening with... **JOHNNY COWLING**



**Ticket only event
£12.50 including
Pasty Supper**

**Eliot House, Liskeard
Friday 17th May 2019
at 7:30pm**

Contact Pat On 01579 362959



VICTORIA INN



Brunch Fridays & Saturdays from 9.30am – 11.30am

Opening Hours

Monday	Closed all day		
Tuesday		5pm to 11pm
Wednesday	12pm to 3pm and	5pm to 11pm
Thursday	12pm to 3pm and	5pm to 11pm
Friday	9.30am	to	11pm
Saturday	9.30am	to	11pm
Sunday	12pm to	10pm

FOOD

Tuesday Curry night and full menu.

Carvery every Wednesday 12-3pm and Sunday 12-5pm

Sunday evening food 5pm - 8pm

Fish and Chip Friday Special!

KIDS EAT FREE!!! (Little Tackers Menu) Tue–Fri 5-7pm
For every adult main meal, one child under 12 eats free

Thursday night 2 for £12

Check out our new menu including “Healthy options.”

LIVE MUSIC EVERY MONTH



CALL – 01579 363933



LET'S MEET (chat and eat!)



@Gorfenna

St. Ive, PL14 3LX



LUNCH CLUB.

A chance to meet up and socialise. All welcome.



**1st Monday of
every month**



11.30 - 2pm.

£2.50 pay on the day.

01579 384810

Call for information or just come along.

A friendly welcome, a warm lunch and conversation await!

www.gorfennacommunity.co.uk



ROYAL
VOLUNTARY
SERVICE

Social Farms
& Gardens



PENSILVA MEMORY CAFE

DO YOU HAVE MEMORY PROBLEMS OR CARE FOR SOMEONE WHO DOES? WHETHER IT'S MILD, MODERATE OR SEVERE YOU CAN SOMETIMES FEEL A BIT ISOLATED AND ALONE.



DON'T BE LONELY. KEEP SMILING. THERE ARE MANY OTHERS LIVING WITH THIS CONDITION.

COME AND JOIN US ONCE A MONTH FOR SOME FUN AND LAUGHTER, MUSIC & REMINISCENCES.

WE MEET ON THE FOURTH THURSDAY OF EACH MONTH AT ST JOHN'S CHURCH FROM 2PM – 4PM.

WE ALSO SUPPLY TEA/COFFEE AND CAKES.

DONATIONS OF £1 PER PERSON APPRECIATED FOR MORE INFO PHONE PAT 01579 363461 OR CAROLYN 01579 362698

Pensioners Lunch

2 Course Meal plus Tea or Coffee

Only £6.00

Every Tuesday here at Millennium House

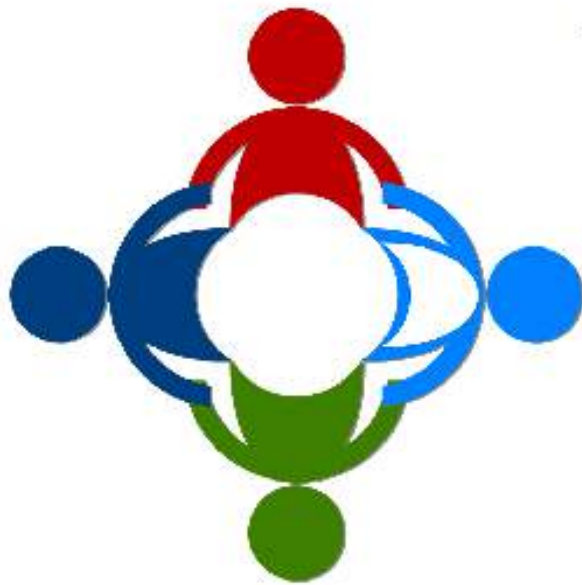
Speak to our reception or

telephone Millennium House on **01579 363096**



So why not join us for Good Food and Good Company, all on the day you collect your pension?

Liskeard Methodist Church, Barn Street, Liskeard PL14 4BL



Wesley Online Centre

**Computers, Internet &
Support - FREE!**

Opening Times:

Tuesday: 7-9pm;

Wednesday: 10am-1pm

Friday: 2-5pm;

Saturday: 10am-12pm



Badminton?

Come and join our relaxed and friendly group at Pensilva Millennium House

Mon & Tue 7.30 - 9.30pm

Friday 8.00 - 10.00pm

For further info phone

Nigel or Carol on

01579 363594 or

07885 798370

All Being Well

Your local, friendly gym.

Over 18 years working in our local community to improve health, fitness and well being. Call **01579 363890**, drop in at Millennium House, Pensilva, or email abwgym@gmail.com

Opening hours:

Mon/Fri 10am-3pm & 5pm-9pm

Wed 10am to 3pm

Tues/Thur 9am to 1pm

Saturday 10am to 1pm

Ask about GP exercise referrals!

PENMILL ART GROUP

We are a small, friendly group using all art mediums. If you paint we would love you to join us.

We meet at

Millennium House

10-2 every Friday.

Please come & see us or phone Pam on **01579 363441.**

LISKERRET MALE VOICE CHOIR

We are currently looking for new members in all sections. No previous experience necessary.

Practice Mondays 7:30pm at the Royal British Legion, Liskeard.

Enquiries to the secretary on

01579 363881

Email: charaton@btinternet.com

Website: www.liskerretmvc.org

Charity No. 1120243

PENSILVA VILLAGE HALL

Anyone wishing to book the hall for meetings, birthday parties or fundraisers please contact Peter or Jackie Browning on **01579 363212** or email **peterpensilva@gmail.com**



Please note that as well as hall rent there is a coin meter for heating at 60p/hr.

We hold a Hall a users and committee meeting on the fourth Monday of every 2nd month starting in January at 7.00pm. Please feel free to come along and support us.

There will be a jumble sale on 9th March. Please contact Jackie if you wish to donate. We can collect.

Organisations that meet in Pensilva Village Hall

Meeting Times	Organisation	Contact Person	Telephone
Mon .from 10:30	Face Yoga	Lilian Jones	lilianjones@hotmail.co.uk
Mon. 4:00 - 6:00	Brownies	Mrs Martha Oliver	01579 362239
AlternateWed. 2:30 - 4:00	Wednesday Club	Mrs Jean Conner	01579 363221
Wed. 7:00 & various	Snooker Club	Mr Philip Bond	01579 362091
Thu. 6:00 - 8:00	Guides	Miss Caroline Hambly	01579 363228
Fri. 1:00 - 3:00	MIMS	Chris	01579 343702
Fri. 4:00 - 5:00	Rainbows	Mrs Lynne Bond	01579 362091

St Ive Institute & Village Hall

Every Wednesday	10:30am to 12 noon 10:30am to 11:30am	Coffee morning Travelling Post Office
First Monday	7:30pm	St Ive Gardening Club
Every Monday & Thursday 26	7:00pm	St Ive Snooker Club

PENSILVA HEALTH CENTRE - PATIENT PARTICIPATION GROUP
We are a group of patients who meet regularly with the Health Centre to bring forward for discussion ideas, comments and suggestions about your surgery. In the past we have held open days, helped at the flu clinics and participated in a trial People's Commissioning Board Project.

We also organise a Carer's and bereavement group (see below) and a 'Walking for Health' group

(Contact Marlene Carr 362919).

You can contact us directly or through the Health Centre.

PENSILVA HEALTH CENTRE CARERS AND BEREAVEMENT GROUP

Are you a carer, bereaved or lonely? Then come along and join our Group. Tea, Coffee and plenty of friendly chat and, when possible, local trips to various venues.

**Meetings are held every third Thursday of each month at 11.30.a.m.
Meet in Millennium House car park.**

For any information please contact Jean Connor 01579 363221



Struggling with Sight Loss?

iSight Cornwall offers practical help to people living with sight loss in Cornwall including:

Low Vision: Advice for low vision aids

Assistive Technology: Advice on products

Benefits Advice: Assistance to claim entitlements

Equipment Demonstration: Advice on gadgets

Social Clubs & Activities: Links to clubs & activities in the county

For more details Telephone 01872 261110 or visit

www.isightcornwall.org.uk



Supported by
local Doctors



Started by PATIENTS Run by PATIENTS For the PATIENTS
with COPD and long term conditions

Are you living with COPD or another long term lung condition?

Why not join our friendly group for company, light exercise & support?

We meet upstairs in Millennium House, Pensilva, Mondays 12.30 - 2.30

First week FREE. Thereafter £3 per week. Refreshments provided.

If you would like more information please call us

Pauline: 01579 532467

Jeanette: 01579 363691

St Ive Methodist Chapel

Services for April 2019

Sun 7th Apr	11am	Mrs Margaret Halls-Falconer
Sun 14th Apr	11am	Rev Iris Bray
	6pm	United "Green Shoots" service led by Keith Mutton
Sun 21st Apr	11am	Easter Day Mr Julian Langston
Sun 28th Apr	11am	Mrs Linda Eastlake
	5pm	Food for Thought at St John's Pensilva

Real Junk Food Project Lent Lunch at Chapel 12th April 12 noon.

The Chattermakers Craft group will meet at Chapel 7.30pm on Thursday 4th and 18th Apr from 7.30pm. All welcome.

The Village Prayer group will be held at Chapel on Wed 10th April 7.30pm.
Thurs 14th & 28th Mar at 2pm. All welcome.

St Ive Church

Services at 11:15am every Sunday

- Apr 7th Holy Communion (**Rev Becca Bell's first service at St Ive**)
Apr 14th Morning Worship
Apr 18th Maundy Thursday Service 7pm
Apr 19th Good Friday Hour Before The Cross 11am
Apr 21st Easter Sunday 11.15am. *Lunch follows this service*
Apr 28th Family Service. *Small pets welcome*
-

Other April Events

- Fri 5th Produce Market with Lent Lunch 10:30**
Home made cakes etc, fresh vegetables, locally made pasties, pickles, jams and much more. Farm fresh meat from Trehill Farm Produce.
- Fri 12th Lent Lunch in Chapel 12 noon**
- Sun 21st Lunch in Church 12.45** All welcome. Only £7 for 2 courses.
- Mon 22nd Easter Egg hunt 11am**
Find an extra supply of Easter Eggs and enjoy homemade refreshments..

Church Wardens Brian Dwelly 01579 364010 btdwelly@aol.com

Colin Catchpole 01579 383867 ccatchpole@hotmail.com

Please let Churchwardens know of anyone requiring a home or hospital visit.

Donations for Liskeard Food Bank can be left in the Church each day between 10am & 4pm

Alford Joinery - For all your joinery needs

Specialists in bespoke doors, windows, staircases, conservatories, etc.

- 20 years experience
- Large or small jobs 01208 873444 or 07757 666460
- All joinery hand-crafted info@alfordjoinery.com
- Top quality FSC certified timbers www.alfordjoinery.com
- All joinery can be fitted if required.

ST JOHN'S CHURCH, PENSILVA

Services for April 2019

Anglicans and Methodists share services at 11 am each Sunday, coffee served before service

Sunday 7 th	11am	Rev Sue Hill
Sunday 14 th	11 am	Café Church
Sunday 21 st	11am	EASTER SUNDAY , Anglican Service
Sunday 28 th	11 am	Mr David Wenmouth
	5pm	Food for Thought

Café Style Church followed by coffee and chat, Thursday mornings 10am.

Everyone very welcome.

Afternoon Tea on Friday 5th March at St John's Church, Bring and Buy.

Everyone welcome.

Lent Lunches on Thursday 4th & 11th 12.00 to 1.30 at St John's Church.

Soup, roll & cheese followed by coffee/tea. Look forward to seeing you there.

Memory Café Thursday 24th April, 2-4pm in St. John's Church

Lent Course Friday 5th and 12th April. Contact Carolyn on 362698 for further details.

Prayer Group 2pm Friday 12th and 26th April. Please ring Eileen on 362580 or Carolyn on 362698, if you would like prayer for yourself or someone else.

For further details of the Services held in St John's, if you know of any illness or need in the village or if you would like your wedding or baptism in the church, please ring: Geoff Cox, 362698 or Frances Tucker, 363718

be inspired
with
Slimming World®

CONTACT HAYLEY

07966 370233

The Pensilva Group meets in Millennium House on Mondays at 10:00am, 5:30pm and 7:30pm .

A Wednesday morning group meets at 09:30am in the Sports club, Liskeard



slimmingworld.co.uk



DO YOU NEED A HELPING HAND?

Reliable, friendly,
experienced, mature
local resident offering
the following services:



Cleaning Ironing

Shopping Light Gardening Dog Walking

CRB/DBS checked and fully insured. Competitive rates.

Contact Jess: Telephone or text: 07934 764 327.

Email: homeangel77@yahoo.com. Find us on Facebook





Westcountry HOME CARE

We can help you to get the most out of your life by delivering personalised care from daily visits to 24 hr care.

By working together we will find the right care services for your Individual needs

Speak to us to claim your free visit*

Our Team Is Your Team

www.westcountrycare.co.uk

 @WCHCLTD

01579 342256
01566 775960



Care Quality
Commission

Good

*T&C Apply



Affordable Counselling

Caring, confidential,
non-judgemental

- Increased confidence and self esteem
- Help to cope better at difficult times
- Improved relationships
- Clarify confused thoughts & feelings
- Assertiveness
- Personal insight
- Improved emotional health
- Available for youth and adults

**Isabelle McGarahan BA, PGCE
Dip in Therapeutic Counselling,
Accredited ACC, DBS cleared**

www.im-counselling.org email:

**isabelle@im-counselling.org
01579 344090/07857326229**



Paul Bradley - Proprietor

**Mobile:
07598 956 760**

**Email:
info@pbplumbingheating.co.uk**

**Web:
www.pbplumbingheating.co.uk**



**Follow me on Facebook:
[p.d. bradley plumbing & heating](https://www.facebook.com/p.d.bradleyplumbingheating)**

***"The complete bathroom
installation service"***

**New bathrooms fitted,
floor and wall tiling specialist**

General Plumbing including:

- Bathroom makeovers
- Dripping taps and burst pipes
- Pump and cylinder changes
- Radiator upgrades and additions
- Specialist in Leadwork
- No job too small
- No Call out charge



**W.Hale
Plumbing**

Friendly Service, Quality Work

**NO VAT
City and Guilds Qualified
established 1983**

Call William Hale on

Tel: 01579 362132 Mobile: 07826 699719



- ✓ LPG Bottled Gas
- ✓ Patio, BBQ & Camping Gas
- ✓ Kiln Dried Logs
- ✓ Coal & Smokeless Fuel
- ✓ Eco Heatlogs
- ✓ No Contracts
- ✓ FREE DELIVERY



01208 816 827

sales@loganslogs.com

www.loganslogs.com

The Treatment Barn



Treatments include;
Bowen, Child Clinical Psychology, Colour
Therapy, Crystal Healing, Hypnotherapy,
Massage, Reiki, Reflexology
(Massage Therapies include; Swedish, Deep
tissue, Hot stones, Indian Head Massage)

Briston Orchard, St Mellion, PL12 6RQ

therapies@treatmentbarn.co.uk

01579 351568

MARK FITCH CHIMNEY SWEEP

- * BRUSH & VACUUM
- * CLEAN, RELIABLE SERVICE
- * COVERING ALL S.E. CORNWALL
- * DISCOUNT FOR MULTIPLE CHIMNEYS
- * COWLS & GUARDS FITTED
- * STOVES SERVICED



*Call
Mark on:*

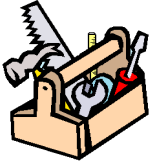
01579 350762

07773 462643



KEEP IT TIDY

General Property Maintenance
including Decorating, plus Electrical



HONEST PRICE
for
QUALITY WORK.



No Job Too Small

Kit Rickard

18 Higher Glen Park
Pensilva

Phone: 01579 363378

Mobile: 07855 699071

Email: KITKeepItTidy@hotmail.com

Do you enjoy growing your own
fruit and vegetables, but have no
space in your own polytunnel?



**WE HAVE TWO LARGE COMMERCIAL
POLYTUNNELS FOR HIRE.**

**Fully connected to power & water.
Hydroponic equipment available.**

**If interested, please email:
info@trevallicks.com**

DOG GROOMING

40 YEARS EXPERIENCE



**SMALL and MEDIUM Dogs
Groomed to Your Request**

**LISKEARD AREA
Inquiries Welcome**

**Call Patricia: 07517 658862
TO YOU OR TO ME**



Domestic Electrical
Property Maintenance
Interior & Exterior Work
Carpentry :: Decking
Kitchens :: Bathrooms
Wall & Floor Tiling
General Plumbing

MCCARTHY PROPERTY MAINTENANCE

**Electrical Safety
Register** incorporating
ELECTSA  ECA
Certification Ltd

**HIGHLY REGARDED LOCAL BUILDER
COMPETITIVELY PRICED
COVERING THE SOUTH WEST**

Contact Dominic

07968 599 675

01579 362 945

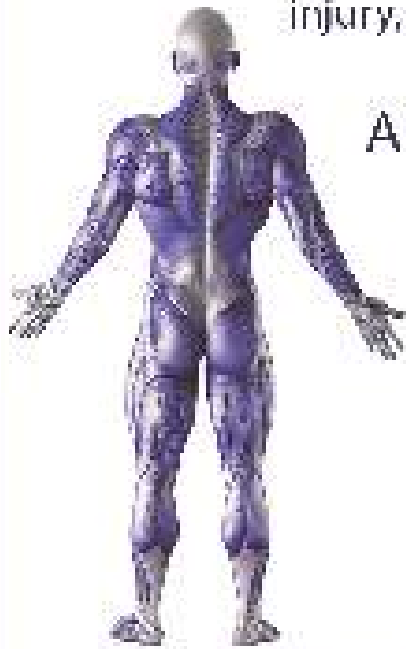
info@mccarthypropertymaintenance.co.uk

www.mccarthypropertymaintenance.co.uk

QUALIFIED RAYNOR MASSAGE THERAPIST

RELAXING AND THERAPEUTIC DEEP TISSUE MASSAGE TREATMENTS

Effective for many different types of chronic pain, sports injury, stress and tension related problems



APPOINTMENTS AVAILABLE AT

THE WELLBEING CENTRE
LISKEARD 01579 344090

THE NATURAL WAY
LISKEARD 01579 345300

Contact : Tina North
Phone : 07720 832322

tina-north@massage-therapy-cornwall.co.uk



R J Gardening & Handyman Services

All aspects of gardening and handyman work undertaken.

- ~Local and Trustworthy
- ~Hard Working
- ~Reliable and Experienced
- ~No job too small
- ~Competitive rates

Contact Raymond on:

07541 229064 or 01579 347622

raymond_pearcegb@yahoo.com

Find us on Facebook.



SCOTT BERRIDGE

Complete Property Refurbishment & Building Maintenance

**INTERNAL & EXTERNAL DECORATING
PAPER HANGING • TILING SPECIALISTS
PLASTERING • PLUMBING • CARPENTRY
FENCING • DECKING • PATIOS**

- Local Pensilva • 25 years experience in Cornwall.
- Proper job • Clean & Tidy • Good references
- Trustworthy • Excellent prices. • Free estimates.

scottberridge@me.com

07889 218 710 (Daytime) 01579 362 006 (evenings)

PENROSS

Rosecraddoc Lodge Holiday Bungalows
(Between Pensilva & Liskeard)

Ideal for family & friends coming to visit!



Refurbished in 2018. Sleeps 4. Electric, heating, bedding & towels inc in rent. Patio. Free wi-fi. Follow us on Facebook.

Sorry no pets or smoking.

Contact Julie Tucker on 01579 362221 or
email penhargetfarm@gmail.com

for 15% discount

NICOLA GREENE

BSc (hons) Podiatry MChs

HPC Registered Chiropodist/Podiatrist

**Home Visit Practice treating all
your foot care needs:**

- Nail Cutting
- Corns and Calluses
- Thickened Nails
- Dry Cracked Skin
- Verrucae
- Foot Pain
- Diabetic Foot Assessments
- Wound Care

T: 01579 590027

T: 01752 291565

M: 07786164205

E: nicki_greene@yahoo.com



R&C



Groundworks and Landscapes

Fencing	Patios
Paths & Steps	
Turf & Astro turf	
Driveways	Rendering
Retaining walls	Decking
Digger work	
Footings & foundations	

And more

Free no obligation quotes

Call Rob on:

07518246666 or

Window Cleaner Window Cleaner

Also any upvc cleaned

i.e. fascias, gutters, etc.

gutters cleared & unblocked

Please phone Rob

07709 053464

Window Cleaner Window Cleaner

Save Costly Energy!



SOLARTEC

Windows &
Conservatories Ltd

**'A' Rated WINDOWS & DOORS
at BEST PRICES EVER!**



Professionally fitted and finished by us with a



10 year ins. guarantee.
In all colours



NEW

**FACTORY SHOP
SUPPLY ONLY**

For all your windows, doors, conservatories,
fascia, trims, guttering and sealants

**7-10 DAY TURN AROUND ON WINDOWS,
DOORS and CONSERVATORIES**

TEL: 01579 343425

FAX: 01579 344500

WEBSITE: www.solartecwindows.co.uk

EMAIL: sales@solartecwindows.co.uk

KEEPING JOBS IN CORNWALL



PJR Garden Services

Phil Rule

All aspects of garden
work - grass / hedge
cutting, patios, fencing
etc.

Mobile 07387 449004

Tom Marshall

TM Plastering

Plasterer and Property Care

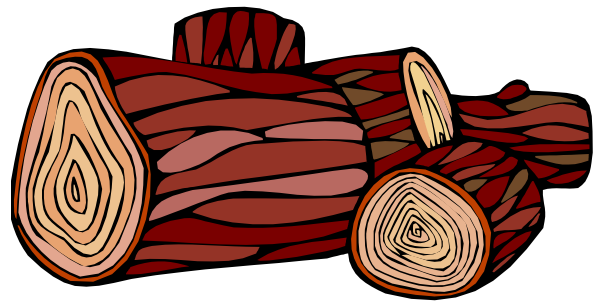
07544819284

Tommarshallcornwall@gmail.com

Free estimates

- Internal plastering
- Internal / external rendering
- Damp proofing
- Stud Walls
- Patio laying
- Chimney repairs
- Pointing
- Painting

SEASONED LOGS



MIXED LOAD

or

HARDWOOD

Tel. Jonathan

Mobile 07966 070725

or

01579 363157

DAVID HEWETT GARDEN SERVICES

For all aspects of garden care:

lawn mowing, grass cutting,

strimming, hedge cutting,

clearance, and more.

01579 363796

25 years experience.

Fully insured.

Alphaplas Limited t/a
Trims&Windows

www.trimsandwindows.co.uk

Double Glazed uPVC
Windows-Doors-Conservatories
'Conservation' vertical sliders a speciality



Supply only to Trade & DIY or
Full installation registered with

FENSA inc
10yr insurance backed guarantee



Email: alphaplas@btconnect.com

01752 840078

Installation team based in
Pensilva, Looe & Torpoint

Group Travel

Enterprise Park, Midway Road,

Bodmin, Cornwall

PL31 2FQ

Tel: 01208 77989



2019 COACH EXCURSIONS & TOURS

30 th MAR	IKEA EXETER	14 th AUG	BRITISH FIREWORK CHAMPIONSHIPS
16 th APR	BUCKFAST ABBEY, BUTTERFLIES & OTTERS	29 th AUG	SEATON TRAMWAY & SIDMOUTH
3 rd MAY	BLUEBELLS @ ENYS GARDENS	10 th SEP	TAMAR CRUISE TO CALSTOCK
8 th MAY	HELSTON FLORA DAY	7 th - 11 th OCT	AUTUMN TOUR TO OXFORDSHIRE
18 th MAY	DEVON COUNTY SHOW	16 th OCT	CLARKS SHOPPING VILLAGE & WELLS *
1 st JUN	BUCKFAST GARDEN FAYRE	25 th OCT	HALLOWEEN SPOOKTACULAR MYSTERY TOUR
11 th JUN	ST IVES & TRAIN	2 nd NOV	BRIDGWATER CARNIVAL
14 th - 17 th JUN	WEYMOUTH *	16 th NOV	LONGLEAT FESTIVAL OF LIGHT
20 th JUN	HIGHGROVE GARDENS	22 nd - 25 th NOV	TURKEY & TINSEL AT SANDOWN, ISLE OF WIGHT
1 st JUL	PAIGNTON STEAM TRAIN & PADDLE STEAMER	7 th DEC	BATH CHRISTMAS MARKET
17 th JUL	STEAM TRAIN TO MINEHEAD *	15 th DEC	TOUR OF CORNISH CHRISTMAS LIGHTS
4 th AUG	FESTIVAL OF BRITISH EVENTING	21 st DEC	SNOW WHITE @ THE EXETER CORN EXCHANGE
9 th AUG	CORNISH SEAL SANCTUARY	7 th JAN 2020	CINDERELLA @ THEATRE ROYAL, PLYMOUTH

* In conjunction with North Hill Good Companions Group

16 TO 70 SEAT COACHES AVAILABLE FOR PRIVATE HIRE. CORPORATE/ VIP, EVENTS & CONFERENCES, WEDDINGS (CAN INCLUDE STAG & HEN PARTY PACKAGE), HOLIDAY TRANSFERS, FUNERALS, DAYS OUT, GROUP TOURS, GOLFING HOLIDAYS & SPORTING EVENTS.

FOR BOOKINGS AND A BROCHURE PLEASE CALL

01208 77989 / 01208 72669

Website: grouptourcoachhire.com Email: grouptourcornwall@btconnect.com

Martin Hoare – Local, Reliable, Competitive



WHEEL DIGGER FOR HIRE
ALSO AVAILABE 'BREAKER'
AND NEW CONCRETE
'CRUSHER BUCKET'

ALL AT COMPETITIVE RATES

GROUND WORKS
DRAINAGE
NEW DRIVEWAYS
SEPTIC TANKS &
'SOAK AWAYS' INSTALLED



LASER LEVEL FOR HIRE
QUOTES AVAILABLE



Phone 01579 363517

or

Mob 07863 291213



INDEPENDENT
FAMILY
FUNERAL
DIRECTORS



Undertaking your individual
needs with efficiency,
compassion and care...

Perfect Choice Prepayment
Funeral Plans from £3249.00

(Prices correct as at 01.01.2013)

01579 362358



Avalennek, Caradon Town,
Upton Cross, Liskeard
Cornwall PL14 5AR
Telephone 01579 363598
Mobile 07901 538132
chrisrounsevell@tiscali.co.uk

HOG ROAST EQUIPMENT HIRE AND MEAT SUPPLY

Hog Roasts For Those Special Occasions
Self Catering or Hassle Free Service
Everything done to your special requirements

CHRIS ROUNSEVELL
TRADITIONAL BUTCHER



Local Accountant offering fixed fee accounting services

With over 20 years experience, I am a fully qualified, friendly, local accountant

- ✓ Annual Accounts for Sole Traders and Partnerships
- ✓ Book Keeping & Payroll
- ✓ Personal Tax Planning
- ✓ Company Accounts
- ✓ Business Support & Advice

- ✓ Self Assessment tax returns
- ✓ iXBRL tax filing
- ✓ Tax investigation Fees Insurance
- ✓ Company Secretarial work
- ✓ Tax calculations for Sole Traders and Partnerships

Kate Vaughnley FCCA - Chartered Certified Accountant

Website : www.kvaccountingsolutions.co.uk or Email : katevaughnley@gmail.com
Telephone : 01579 364083



GRAB LORRY HIRE

PLANT HIRE & GROUNDWORKS

07970 270218 | 01579 344402

**MORE COST-EFFECTIVE THAN SKIPS
FOR SOIL, RUBBLE & GREEN WASTE
REMOVAL!**

CAN REACH OVER WALLS &
FENCES FOR COLLECTION
FROM INACCESSIBLE AREAS

SKIP BAGS AVAILABLE FOR
SMALL JOBS



Come and visit our recently updated
Tile & Bathroom showroom in PENSILVA

We offer a generous discount to all Pump Readers

Unit 24 Pensilva Ind Est, St Ive Road, Cornwall PL14 5RE 01579 362264



CORNWALL TILE
CENTRE

Pensilva Showroom

Open Mon - Fri 8.30am - 5pm
Saturday 9.00am - 1pm

Tiles & Mosaics for:

Bathrooms & Kitchens Living Areas Conservatories
Patios & External Areas Wet Rooms & Spas Swimming Pools
& All Commercial Applications

 atlas concorde

www.cornwalltile.com

OPEN FOR RETAIL, TRADE & COMMERCIAL ENQUIRIES



The
**RACEHORSE
INN**



Gastro Pub

Head Chef Phillip Bradshaw

Ray and Flori welcome you to
the Racehorse INN

A fine food experience in a convivial
atmosphere

Our superb Sunday lunch is one to be tried

Open Every Day for Lunch and Dinner

info@racehorseinn.co.uk
www.racehorseinn.co.uk

Take-out: Pizzas & Fish'n'Chips now available



North Hill Village, Cornwall, PL15 7PG

01566 786 916

J. H. Simmons

Painting & Decorating



No Job Too Small

For more information
Please call John
01579 362688

7 East Park, Pensilva

D.J.A. BUILDING SERVICES

ALL ASPECTS OF PROPERTY
MAINTENANCE BUILDING &
REFURBISHMENT

- * Bespoke Furniture and Kitchens
- * Wardrobes and Bookcases
- * Garden Sheds, Poultry Houses & Small Animal Shelters
- * Over 30 years' experience
- * Fully insured
- * References available
- * Free estimates
- * No VAT

**Call David on 01579
364050 / 07767662635**

Westwood Garden Maintenance



Antony Watts

Grass Cutting, Clearance

Weeding, Turfing

Hedge Cutting

Patio Cleaning, Planting

Regular Visits / One-off Contracts

Residential & Commercial

FREE ESTIMATES

01579 362019 www.westwoodgm.co.uk 07952 094472

WH BOND

BOND
TIMBER

BOND
AGRI

BOND
HIRE & SALES

BOND
FARMS



BOND TIMBER
BAKE SAWMILL
TRERULEFOOT
SALTASH
PL12 5BW

BOND HIRE & SALES
MOORDOWN
ST IVE
LISKEARD
PL14 3NA

BOND AGRI
UNIT 4
LITTLE TRETREW
HORNINGTOPS
PL13 3PZ

01503 240 308
WWW.BONDTIMBER.CO.UK

01579 383 185
WWW.WHBOND.CO.UK

01503 240 171
WWW.BONDAGRI.CO.UK

Pensilva Stores

Amazing Value

Premier
a great deal more from your local store
Mon-Sat. 7:00 AM. – 9:30 PM.
Sunday 8:00 AM. – 9:30 PM.

- ✓ Fantastic Special Offers every month!!! (See store leaflets)
- ✓ Come and Check out our great deals on Wine, Beer and Spirits
- ✓ Local Produce: Homemade Butter and Clotted Cream, Meat from our local butcher
- ✓ Cornish Fresh Fruit and Vegetables
- ✓ Fresh Bread, Pasties and Cakes
- ✓ Take Away Coffee, tea and hot chocolate
- ✓ Newspapers and Magazines, Greeting Cards
- ✓ Paypoint, Lottery

*** Free to use ATM ***
*** Card Payment ***

Friendly Staff + Service with a Smile !!!

Pensilva Stores is a family run business who have been serving local people and visitors for more than 21 years.

Higher Road, Pensilva, Liskeard, Cornwall PL14 5NQ

Tel: 01579 362547

MENDOLOGY Garage Door Specialist

- Repairs
- Servicing
- Installations

Out of hours service
call Dave anytime 07974 442645


MENDOLOGY COMMERCIAL DOORS LTD

www.mendologydoors.co.uk

01579 363760

PensilvaCars

01579 363516

- ✓ MOTs Class 4
- ✓ Service
- ✓ Repair
- ✓ Tyres
- ✓ FREE Courtesy Car
- ✓ Car & Van Sales
- ✓ Diagnostics
- ✓ Air Conditioning
- ✓ 

We have offered a supply, fit & balance of tyre service for 10 years at competitive prices.

Most of our tyres can be supplied the same day.

LOCAL RECOVERY £45.00

www.pensilvacars.co.uk

pensilvacars@hotmail.co.uk

We can service and repair your car to manufacturer specification, keeping your dealer warranty without main dealer expense.





KEITH RICHARDS

Motor Body Repair Specialists

A family run business with fully equipped & maintained workshops & a focus on
Customer Care

- ◇ Motor Body Repair Specialist
- ◇ Mechanical Repairs
- ◇ Servicing to All Makes & Models
- ◇ Computer 4 Wheel Alignment
- ◇ 24 Hour Recovery Service
- ◇ Renovations & Re-sprays
- ◇ Member of RMI (Retail Motor Industry Federation)
- ◇ Latest Diagnostics (including specialists for VW, Audi, Seat, Skoda & Vauxhall)

With over 30 years' experience we aim to provide you with:- Value for Money -
Friendly Service - Professional Approach - Expert Advice that you Can Trust
(Visit our website for more details)

Pensilva Industrial Estate, St Ive Road, Pensilva, Liskeard, Cornwall PL14 5RE

Tel: 01579 362593

Email: keith@keithrichardsmotorbody.co.uk

Fax: 01579 363194

Website: www.keithrichardsmotorbody.co.uk

Wm. Newham & Sons Est. 1835

Proprietor Robbie Savill AWCB

CHIMNEY SWEEPS & BLACKSMITHS



CHIMNEY SWEEPING

BIRD GUARDS, COWLS & POTS FITTED

CCTV INSPECTIONS & SURVEYS

STACK REPAIRS & REBUILDS

RIGID STEEL SYSTEMS ERECTED

STAINLESS STEEL and PUMPED CONCRETE
CHIMNEY LINING

STOVES SUPPLIED, INSTALLED & REPAIRED

FIREPLACE ALTERATIONS & RENOVATIONS

FULL RANGE OF FIREPLACE FURNITURE
made to order

01579 347777

need somewhere to stay ?
between homes ?
family/friends visiting ?



ideal for Pensilva
& St.Ive

please call Jackie on
01579 362216

J.J.CHILD

PLUMBING AND HEATING ENGINEER

OIL AND GAS APPLIANCE SERVICE , REPAIR AND BREAKDOWNS

LANDLORD'S CERTIFICATES

OVER 25 YEARS EXPERIENCE
CALL JOHN ON 01579 362336
MOBILE 07837921086



502322

Bargain Corner Free Ads up to £50

Ads are free for items up to £50. £5 charge for items over £50. Please ring the Parish Office on **01579 363096** or leave a note at Millennium House reception or email **parishpump@btconnect.com**.

*****Please let us know when your item has sold*****

Door Canopy. Brand new still in box. Black sides, white roof. **£15.**
Wooden **hall seat** with cushion. Two-door opening for shoes. **£15**
Call 07856 534691 for more details.

Mahogany **tea caddy** with glass mixer **£35**
Various **pictures** £25 each.
Assorted **old china.** **£5 - £30.**
01579 363626

Brown speckled **carpet**, 2m x 5m. Brand new (over ordered). **£50.**
Arch design **headboards.** **£20 each or £35 pair.**
01579 362211

2 x 225/45 r17 **used tyres**, good tread. **£20** the pair.
House coal 3 full 25kg bags and 2 lightly used open bags **£30**
Set of **Snow chains**, new and unused fit 14" to 19" rims, self adjusting. **£40**
Pensilva **01579 362207**

FREE Dining Table (Teak) & 4 chairs. In perfect condition. Fully extended 138x100cm. Oval shape, black & white check upholstery on padded seating. Buyer collects. Table can be dismantled into 2 pieces. Call Aisha on **01579 363673**

LEC Fridge. As new. 50W/55D/85H. 1 year old. (Cost £150). **£45.** Pensilva.
01579 363812

2-Drawer Filing Cabinets (2) H 710mm, W 475mm D 620mm. Could deliver in local area **£25 each**
07796 091259

Electric **Hostess Serving trolley** with four warming dishes. **£45.**
01579 320401

Apollo FS24 **child's mountain bike** and helmet. Suit 8 - 10 year old. **£25**
01579 362581

1 x HAMA Omega Premium **photo/video tripod - £23**
1 x VELBON CX Mini photo/video tripod - **£15**
1 x Heiwa Sumo **Junior TH250 photo/video tripod - £10**
All items in very good used condition.
Pensilva 01579 362207

4 **Cobblers Shoe Irons**, including a rare ladies shoe iron all in VGC. For use or ornamental displays. **£30.**
HP Deskjet Printer in VGC with 5 new HP 21 Black Ink Cartridges and 2 HP Extra large Colour Ink Cartridges **£45 ono.**
2 large size lightweight **camouflage military jackets.** **£10 each, £15 for both.**
Hardwood School Play Ground **Waste Basket Plant Display Holder** 26" high by 16" diameter. Hardwood slats on a galvanised steel wood frame and legs, which can be bolted to the ground. VG solid condition. **£10.**
015679 384658

Morphy Richards Breadmaker as new **£10**
Challenge Leaf Blower **£10**
Hand Mower **£5**
Giant Phone **£3**
3 Cocktail Glasses with Shaker and
recipes **£15**
07969 310603

Concrete Coal Bunker **£20**
Heavy Duty Plastic Composter **£15**
01579 363892

AURA 3 Tent, colour Green; only used
for 8 nights camping. Bought for £179.99
but offering it now for **£100** as I have had
to give up camping.
Also the **matching Porch Extension** -
BRAND NEW, never unpacked since
buying for £99.99, but now for sale at
£50. Real bargains. If you're interested
in both, please make me a reasonable
offer as I can no longer make use of
them. **01579 362574** (Pensilva)
Please note corrected telephone number

Wood-framed **mirror** 2'6" x 3'7". **£10.**
01579 363812

Mobility Walker Hardly used. Cost about
£80 new from Argos. Will sell for **£40**
18 Demijohns **£1 each.** **01579 362001**

4 frame honey extractor (plastic). Good
order. **£45.**
Carpet shampooer **£6**
Dyson hoover **£5**
01579 320401.

Brand new, never worn, **motor bike**
helmet, with visor and inside sun visor,
red, grey & white. Size medium. Paid £90,
will accept **£30** or nearest offer.
07980 284002

Leather black briefcase 17½" x 12½" x
4". **£10 o.n.o.** In good condition.
01579 362846

Please let us know when your item has sold.

Art Classes *with Yvette*

Millennium Centre, Pensilva.

*If you have always wanted to Sketch or Paint 'Why Wait'??
Come and Join one of my classes, they are fully structured,
suitable for both beginners and improvers.*

Kick start your hobby in a 'friendly and relaxed' atmosphere, aimed at 'enjoyment'.

Drawing Class - Wednesday Mornings 9.30am to 12.30pm

Watercolour Art Class - Wednesday Afternoon 1.30 to 4.30pm

Other Classes & One day workshops or demonstrations also available.

Contact Yvette on 07886 343621 or

email: yvettewiltshire@sky.com website: www.artwithyvette.com

What's on in St Ive Parish ?

WHAT'S ON	WHEN	CONTACT DETAILS
MILLENNIUM HOUSE		
Aikido	Thursday 7:00pm	
Antique & Collectors Fair	4th Sunday Monthly 10:00 - 4:00	
Badminton Club	Mon & Tues 7:30pm. Fr. 8.00pm	01579 363594 (Carol & Nigel)
Book Exchange	Daily	01579 363096
Pensilva Breathers	Monday 12.30pm - 2.30pm	01579 532467 Pauline
Country Dancing	Alternate Thursdays 8.00 - 10.00pm	01579 382402 Ray Buckingham
Drawing Class	Wednesdays 09.30am - 12.30pm	07886 343621 (Yvette Wiltshire)
Ladies Netball	Friday 09.15 - 10:15am	07985 387472
Penmill Art Group	Friday 10am - 2pm	01579 363441
Pensioners Lunches	Tuesday 12:00 - 2:00pm	01579 363096
Short Mat Bowls	Thursday 7:00pm	01579 208528
Watercolour Art Class	Wednesdays 1.30pm - 4.30pm	07886 343621 (Yvette Wiltshire)
Wildlife Group	Quarterly	01579 362539 (Hilary)
Woman's Institute	2nd Wed Monthly 7:15pm	01579 363718 (Frances Tucker)
Yoga	Wednesday 7:00pm	01579 344464
PENSILVA VILLAGE HALL		
Face Yoga	Monday from 10:30am. Starts April 29	lilianjones@hotmail.co.uk
Brownies	Monday 4:00 - 6:00pm	01579 362239 Martha Oliver
Pensilva Wednesday Club	Wednesday 2:30pm	01579 363221 Mrs Jean Conner
Pensilva Snooker Club	Wed 7:00pm + Various times	01579 362091 Phillip Bond
Guides	Thursday 6:00 - 8:00pm	01579 363228 Caroline Hambly
MIMS	Friday 1.00 - 3.00pm	01579 343702 (Chris)
Rainbows	Friday 4:00 - 5:00pm	01579 362091 Lynne Bond
Rangers	For Info	01579 362982 Kirsty Oliver
PENSILVA PRE-SCHOOL		
Pensilva Pre-School	Monday-Fridays 9:00 - 3:15 (session times available)	07890 023924 Mrs Suzanne Kinsman (Manager)
Tiny Tots Toddler group	Friday 9:15 - 11:15am	07890 023924 Mrs Suzanne Kinsman (Manager)

ST IVE INSTITUTE

Gardening Club	1st Monday monthly 7:30pm	01579 382762
St Ive Snooker Club	Monday & Thursday 7:00pm	01579 382315 R Bunkum
Art & Craft Group	Tuesday 1:00 - 5:00pm	01579 362216 (Jackie)
Post Office	Wednesday 10:30 - 11:30	
Coffee Morning	Wednesday 10:30 - 12:00	
St. Ive Singing Group	Thursday 4.00 - 5:30pm	01579 382341 (Clare)

St Ive Institute available for hire, £3.50 per hour. This includes the use of the kitchen & electric (excluding wall heaters, which are on a £1 coin meter)

Contact Sue Sedgewick on 01579 383291

Hall meetings will now be held quarterly on the second Tuesday of the month in January, April (includes AGM), July and October.

ST IVE & DISTRICT GARDENING ASSOCIATION

Meetings in St Ive Village Hall 1st Monday in the month at 7.30pm

Mon 1st April **A Daffodil walk at Cotehele.** St Dominick PL12 6TA.
Leave St Ive car park at 5.35pm. Car Share £1.50. Entry £2.50. No refreshments.

Mon 13th May A visit to the garden at **Pendower House**, Lanteglos-by-Fowey.
Leave St Ive car park at 6.40pm. Car share £2.50. Refreshments £3.50. Entry £4.50.

Sat 25th May **Plant Sale** in **St Ive Village Hall**. Doors open 1.30pm.
Bring along your spare seedlings and cuttings for sale and find yourself something new.

Visitors and new members are always welcome to join us.

ART AND CRAFT GROUP

We are a small friendly informal group who enjoy doing art and craft. If you paint or do any type of craftwork and would like to join us we'd love to welcome you.

There is no 'teaching' but help/advice is always forthcoming!

We meet at St. Ive Institute Hall from 1.00pm to 5.00pm Tuesday afternoons.

Only £3.00 for the afternoon plus 50p for tea/coffee and biccies.

If you are interested please give Jackie a call on **01579 362216**.

We look forward to meeting you.

Pensilva Post Office

Located through the Café on the 1st floor of Millennium House



Opening times:

Tuesday	-	9am to 1pm
Wednesday	-	9am to 12 noon
Friday	-	9am to 12 noon

THE MEL BAR ***MILLENNIUM HOUSE*** ***Licensed Free House***

GUEST ALES - LAGERS - CIDERS - WINES - SPIRITS

Opening Hours

Mon - Fri	-	5 pm to 10 pm
Saturday	-	12 noon to 11 pm
Sunday	-	12 noon to 11 pm

PLEASE NOTE CHANGE TO FRIDAY OPENING HOURS

01579 363096