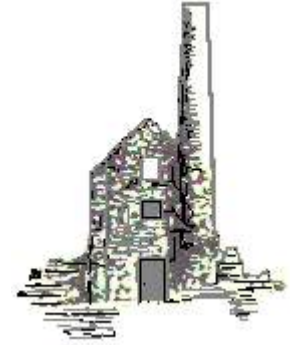


# THE PARISH PUMP



December 2017  
Edition 433



**The Newsletter for the Parish of St Ives**



Barbara Bennett from Pensilva donates her 100th pint of blood at Millennium House. See page 7.

## Disclaimer

The articles appearing in this magazine do not necessarily reflect the views of the Parish Council nor of the Parish Pump Editor.

## Parish Councillors Telephone List

Peter Haines (chair)	01579 362459	Ruth Wilson (vice chair)	01579 363684
James Bruce	01579 362983	Marlene Carr	01579 362919
Martin Corney	01579 382450	Angie Haines	01579 362459
Rosemary Farley	01579 384810	Tony Hodson	07973 536964
Nigel Libby	07968 891814	Alan Moss	01579 362064
Kath Parkes	01579 362005	Ivor Vaughan	07979 934604

Sharon Daw (Cornwall Councillor)

## Meetings of St Ive Parish Council

**2nd Monday monthly:** Parish Council Meeting, alternating between St Ive Village Hall and Millennium House (please refer to notice boards for the agenda showing start time and venue each month). Any changes to the regular dates (i.e. Bank Holidays etc.) will be publicised accordingly.

**4th Tuesday Monthly:** Parish Council Planning Committee Meeting, 7 pm at Millennium House Pensilva, followed by the Parish Council Finance & Administration Committee Meeting commencing at 7.30 in the same venue.

## Date of Next Parish Council Meeting

Monday 11th December 2017 at 7:30pm at Pensilva



Devon & Cornwall Police  
Building safer communities together



**101**

Minicom 18001 101

**Police Community Neighbourhood Office 01579 325454 at any time**

Your Community Support Officer is PCSO 30271 Linda Phillips.

Contact: [linda.phillips@devonandcornwall.pnn.police.uk](mailto:linda.phillips@devonandcornwall.pnn.police.uk).

Phone for a chat on 07703 885654. Leave a message & I'll call back when on duty

To report a crime call 101 or go to [www.devon-cornwall.police.uk](http://www.devon-cornwall.police.uk)

In an emergency call 999

## Contact details for St. Ive Parish Council and for Millennium House

Address for correspondence: Millennium House, Century Square, Pensilva PL14 5NF

General Parish matters should be raised initially with the Parish Clerk (Leesa Childs) who will present them to the Parish Council.

Telephone: 01579 363096, email: [stiveparish@btconnect.com](mailto:stiveparish@btconnect.com)

For accounts matters for the Parish and for Millennium House contact John Body, Finance Officer: 01579 363096, email: [millenniumhouseadmin@btconnect.com](mailto:millenniumhouseadmin@btconnect.com)

Millennium House enquiries and reservations: 01579 363096

email: [millenniumhouse@btconnect.com](mailto:millenniumhouse@btconnect.com).

On the web: Millennium House Website: [www.cornwallvenue.com](http://www.cornwallvenue.com)

Parish website: [st-ive-parishcouncil.gov.uk](http://st-ive-parishcouncil.gov.uk) Facebook: [facebook.com/stiveparishcouncil](https://facebook.com/stiveparishcouncil)

## Parish Pump Information and Contact Details

To contact the editor please email: [parishpump@btconnect.com](mailto:parishpump@btconnect.com)

or phone the Parish office: **01579 363096**.

Hardcopy submissions by post or by hand to the Parish office, Millennium House.

Softcopy submissions: By email to the editor in MS Word, MS Publisher, pdf, Tiff or jpeg. Please use A4 pages and minimum 16 point font as the Pump is initially produced in A4 size and reduced to an A5 booklet at the printing stage. If in doubt please contact the editor.

**Current Advertising Prices** including VAT at 20%

Per issue:     Quarter Page £7.50             Half Page £15.00             Full Page £25.00

10% discount for 12 months paid in advance.

Bargain Corner free ads by email to the editor or drop off at the Parish Office.

**Deadline for the Parish Pump is STRICTLY 15th of every month**

## THE MEL BAR

Relax and wind down  
at the Mel Bar, Millennium House



## From the Editor

Like many people, I suspect, I often get nostalgic at this time of year. This morning, I found myself wondering what I was doing at this time last year. Well, that didn't take much working out - I was working on the December edition of the Parish Pump. That led me to think about how, in fact, most of us do much the same things, at about the same time, every Christmas. But, unlike my Parish Pump preparations, which are much the same every month, our Christmas traditions are quite different from what we do the rest of the year round: singing Christmas Carols, buying presents, wearing elf hats or pretend reindeer antlers, killing millions of fir trees then enthusiastically decorating them with malfunctioning lights, tinsel and baubles, sending cards to people we haven't seen for years... And that last one got me thinking about how Christmas is the season for the annual catch-up. Whether it's getting together with family members, or making a point of visiting those who can't get about, or phoning those we can't see in person. Somehow we feel compelled to get in touch with as many people as possible and wish them a happy Christmas and new year, ideally without slurring the words too much and giving the game away. And what a wonderful thing that is! (No, not that bit, the getting in touch part). Especially if, like me, you have moved around a fair bit in the course of your life, it somehow does you good to touch base every now and then with bits of your past life that you don't come in contact with so much any more.

Congratulations Barbara Bennett, who in the course of her life has donated 100 pints of blood to the blood transfusion service. It's a rare achievement!

All the best! Joe

## Millennium House Opening Hours

### Reception

9am till 2.30pm Monday to Friday

### Community Coffee Shop

See separate notice on next page

### Bar (see also next page for Christmas and New Year opening times)

5pm till 11pm Monday to Thursday

3pm till 11pm Friday

12am till 11pm Saturday and Sunday

If no-one is available please leave a message in our **letter box** at the front of the building or on our answer phone by calling **01579 363096**.

# MILLENNIUM HOUSE CHRISTMAS AND NEW YEAR BAR OPENING HOURS

Sat. Dec. 23rd 12 pm to 11pm  
Sun. Dec. 24th 12 pm to 11pm  
Mon. Dec. 25th 12 pm to 2pm  
Tue. Dec. 26th 12 pm to 11pm  
Wed. Dec. 27th 5pm to 11pm  
Thu. Dec. 28th 5pm to 11pm

Fri. Dec. 29th 3pm to 11pm  
Sat. Dec. 30th 12pm to 11pm  
Sun. Dec. 31st 12pm to 2am  
Mon. Jan. 1st 12pm to 11pm  
Tue. Jan 2nd 5pm to 11pm  
Wed. Jan 3rd 5pm to 11pm

## COMMUNITY COFFEE SHOP

### in MILLENNIUM HOUSE PENSILVA

THE COFFEE SHOP IS NOW OPEN AT THE FOLLOWING TIMES:

**MONDAYS** 10.00am - 1.00pm

**TUESDAYS** 9.00am - 1.00pm

**WEDNESDAYS** 9.00am - 12 noon

**FRIDAYS** 9.00am - 12 noon

## MOBILE LIBRARY

The County Mobile Library visits our area once a month on Fridays of "Week 3" (NOTE: not necessarily the 3rd Friday of the month).



**Next visits: Dec 22.**

**Stops at:**

**The Victoria Inn, Pensilva at 10.25 to 10.45am;**

**Quethiock bus stop. 11.00 to 11.20am.**



## **Parish Council Chairman's Column**

Winter is well and truly with us now, so don't forget lights on bikes and wear something light coloured on unlit roads at night, or preferably carry a torch.

At the November Parish Council meeting the Parish Council part of the council tax was set for the 2018/19 period and we have kept it the same as this year. This has been achieved with a lot of hard work renegotiating contracts for Millennium House services and reducing other expenditure where possible, although we had to consider our wage bill will rise again. We are also starting to refurbish Millennium House, starting with the bar, thanks to a grant from the brewery and then, a rolling programme of redecoration throughout the building, mainly with a band of volunteers, (if you want to help contact Ruth on reception on a Monday or Thursday morning). Work is also in hand to get the Car park at Millennium house resurfaced, which should start in the new year.

A big thankyou now to the band of volunteers who helped clean up the area around the war memorial in Millennium House garden. It was looking really nice for the remembrance service, which was very well attended.

By the time you are reading this the Christmas season will be under way and the lights will be up at Millennium House, we also hope this year to have a Christmas tree on the lawn in front of Millennium House, to really brighten up the centre of the village. Again if you would like to help contact Ruth on reception.  
Pete H.

### **From Millennium House Management:**

Unfortunately, our request for funds to turn the upstairs gallery room into an official micro-library were denied. However, we'd still like to go ahead with the plans to expand our free library service (and hopefully include puzzle swaps too), and are therefore seeking any local businesses that might have some tall bookshelves they could donate.

Please email Parish Councillor James Bruce:

[james@makeuseof.com](mailto:james@makeuseof.com) if you may be able to help. Thank you!

***On November 7<sup>th</sup>, 2017, Pensilva resident Barbara Bennett donated her 100<sup>th</sup> pint of blood. Here she reminisces about some of the changes that have taken place during her time as a blood donor.***

I first gave blood in 1964, when I was 21! In those days the service was the National Blood Service and you donated just once a year. Until about the mid-1980s, your form would come in the post with a box of 14 ferrous sulphate pills and you took one a day for the seven days either side of giving blood.

When you arrived at the centre, a haematologist with a white jacket and red lapel would test your blood by taking a sample from your earlobe. Meanwhile you signed a form stating that you had not recently had any of the conditions or visited any of the places on the list. If you had, you could not donate. Then you were put in with a nurse on a double-height camp bed. A doctor was always on hand and when he came in you were ready to donate. The nurse would be there the whole time while your blood was collected in a round glass jar. Afterwards she would place a piece of cotton wool over the needle hole and tell you to keep the bandage on for three days! You would then need to rest for a while, so the nurse would usher you to another area where you would half sit, half lie on a camp bed for about half an hour with a cup of tea or coffee and two biscuits.

Things have changed quite a bit since then! Now we can donate three times a year, there are no iron sulphate pills and the service is called Blood Donation, part of NHSBT – NHS Blood and Transplant. They take the sample from the third finger of our right hand, not the earlobe, and the blood is collected in bags. We sit in a swing chair and it's the nurses that get us ready. They insert the needle and the machine does the rest, so one nurse can attend to two or three donors at a time. Afterwards, we sit at a table for our coffee, tea and biscuits. It's also much quicker - all over in three-quarters of an hour!

I am quite proud of my bronze, silver, gold and emerald badges, which I have earned for donating 10, 25, 50 and 75 pints of blood, respectively. I'm looking forward to seeing what the badge is like for 100 pints. Even the design of the insignia has changed over the years; they dropped the crown at the top in about 1993 or 1994, I think.

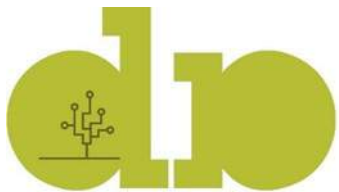
I never had any trouble with the blood test until a month ago when I went for my appointment to donate my 100<sup>th</sup> pint. On that visit they would not take my blood because the iron content was too low. I had to rebook - with instructions to eat lots of spinach and other green-leaf vegetables in the interim. This time, I successfully made my 100<sup>th</sup> blood donation. Perhaps they should have stuck with the Ferrous Sulphate pills after all!

**Barbara Bennett**

**St Ive-based Gorfenna CIC has been chosen to participate in a Lottery-funded project to expand outdoor activity for people with dementia.**



Everyone at Gorfenna CIC is delighted to be one of only nine Care Farms selected nationally by Care Farming UK, who in turn are one of five partners that will work with Dementia Adventure on a three year project to help people living with dementia to get outdoors and so retain a sense of adventure in their lives.



dementia adventure®

Award-winning charity Dementia Adventure has received nearly half a million pounds from the Big Lottery Fund. Through its partners, it will create and sustain outdoor activities for people with dementia as well as making their existing activities more inclusive. According to Neil Mapes, CEO at Dementia Adventure, people living with dementia can benefit emotionally, socially and physically from activity outdoors. Engaging with nature can improve quality of life, build confidence and help lessen the impact of the dementia.

If you would like to come along and see why **Gorfenna** was selected to take part, please give us a ring and come and take a look. 01579 384810.

Just one response to the editor's suggestion last month that local groups use the Pump to showcase what they do!

**LISKEARD AND DISTRICT TREFOIL GUILD**

**Members of Liskeard and District Trefoil Guild meet once a month at Guide Headquarters at Liskeard School, when they are not out playing skittles or having a barbecue or out on a trip. This year we had a coach trip to Falmouth and boat trip across the bay and up the River Helford. It was very much enjoyed. The Trefoil Guild is for those who have in the past made the Guide or Brownie Promise, and who like to enjoy time with like-minded people. We welcome new members. Please give Jane Mann a ring on 01579 362960.**



# *Pensilva Community Association CIO*

## **Notice of AGM**

Notice is hereby given of the Annual General Meeting of Pensilva Community Association CIO to be held at Millennium House, Pensilva on **Wednesday, December 13th, 2017 at 7:30pm.**

In accordance with the CIO's constitution, in the course of the meeting the current trustees will all resign. For a variety of reasons, most of the current trustees, including the Chair and Secretary, have stated that they do not intend to stand for re-election. If there are not enough suitable candidates to take their place, then the current trustees will continue to serve but only for as long as it takes to dissolve the CIO.

It is the strong wish of the retiring trustees that the PCA project concerning the management of Millennium House should continue and that PCA should become a major hub for community activities in our area. We, the current trustees, strongly urge everybody interested in seeing Millennium House prosper as a community centre, and as a hub for community activities, to attend this meeting and to consider putting their names forward for election as trustees of PCA.

There are no other items on the agenda for the meeting.

The trustees of Pensilva Community Association CIO.

## **Supporting Guiding & Scouting Activities in Pensilva 200 CLUB Draw Results for October**

<b>1st No. 25 Mr. R Southcott</b>	<b>2nd No 89 Mr I. Leiper</b>	<b>3rd No 78 Mr M. Green</b>
---------------------------------------	-----------------------------------	----------------------------------

**Thank you for your support**

## PENSILVA W.I.

Our Vice-President Cherry Woodhouse opened the meeting and welcomed our visitors. The past month has been a busy one for our members. This included our very lively and fun Harvest Supper and Produce Auction which raised £114. We also ran a cake stall at the village hall sale which raised a further £85.

The coming month has plenty to look forward to with three craft days, at Pillaton, Lanreath and Cowslip near Launceston. Our Christmas lunch will be held this year at the Whitsand Bay Hotel. The Eden Project are hosting the Cornwall W.I. Candlelit Christmas Concert which promises to be a wonderful evening.

Our speaker this month was Dave Bouch, Head Gardener at Cotehele House. He gave us a brief resumé of his background prior to becoming Head Gardener in 2004. He told us of the starting of the Christmas Garland tradition 60 years ago when it was just made of foliage. By 1981 flowers were being put in it. The Garden Team were responsible for making the garland but the House Team would put it up. Each year the garland is a little different. It all starts in October with the preparation of the ground. Green manure (red clover, white clover, mustard and Italian rye grass) is used to improve the nutrients in the soil. This is left over the winter and in the spring the ground is further prepared by double digging. This is very hard work. The plants are grown from seed in pots, planted in February and pricked out usually until the end of March. They plant out during April. The flowers are picked once ready but need a lot of preparation. The leaves are removed then bunched, tied and hung up to dry in a dark, well-ventilated area. The foliage garland is made up of Pittisporum and this is hung up then the flowers are added. Each of the flowers are put in individually. A total of 32,000 flowers make up the 60 foot long garland. The garland is on show at Cotehele from Saturday 11<sup>th</sup> November – Saturday 6<sup>th</sup> January between 11a.m. and 4 p.m. This was a really interesting talk and all the members enjoyed hearing how the tradition began and were surprised by the amount of work that went into producing such a wonderful display.

Our December meeting is our Christmas Party with a bring and share supper.

Competition winners this month:

Flower of the month :

1 Cherry Woodhouse 2 Sue Turpin 3 Gill Pascoe

Artificial flower arrangement:

1 Sue Turpin<sup>10</sup> 2 Cherry Woodhouse 3 Janet Butcher

*St John's Church Pensilva  
wishes you a very Happy  
Christmas and a Peaceful  
New Year*

*May the humility of the Shepherds  
The perseverance of the Wise Men  
The joy of the Angels  
And the peace of the Christ-Child  
Be God's gift to you this Christmastide  
And always*



## *Christmas Events*

Fridays 1<sup>st</sup>, 8<sup>th</sup> and 15<sup>th</sup> December  
at 7.30 pm an **Advent Course led  
by Mrs Anita Nicholson**

*Christmas in Pensilva  
Church begins with a  
Festival!*

8<sup>th</sup> – 10<sup>th</sup> December **Festival of  
Christmas Handicrafts**

**Fri. 8<sup>th</sup>** Festival open 10am to 4pm

**Sat. 9<sup>th</sup>** Festival open 10am to 4pm

Noon–2pm **Jacket Potato & Dessert  
Lunch**

2-4pm **Christmas Bazaar**

**Sunday 10<sup>th</sup>** Café Church at 11am

Festival open from 12 noon to 4pm

And at 6pm a **Candlelight Carol  
Concert with Con Brio**

**Sunday 17<sup>th</sup>** at 11am Carol Service  
with Holy Communion

**Sunday 24<sup>th</sup>** at 6pm **Carols around  
the Tree with Christingles**

**Monday 25<sup>th</sup>** 10.30am Short, all-  
age, **Christmas Day Service**



FRIENDS OF PENSILVA HEALTH CENTRE



**CHRISTMAS TEA**

TO BE HELD AT MILLENNIUM HOUSE, PENSILVA

FRIDAY, 1st DECEMBER 2017 at 2.p.m.

**STALLS**

**RAFFLE**

ENTRANCE £3

EVERYONE WELCOME

Enquiries please contact:

Marlene Carr 01579 362919



**Ruth and Colleen's Monthly**

**BINGO**

**At Millennium House**

**on Tuesday 5th December**

**Then 5th December**

**Eyes down at 7:30pm**

**Over 18's only**

**£££ CASH PRIZES £££**



# CHRISTMAS TREE FESTIVAL *St Ive Church*



Christmas Trees and  
Festive Decorations

Soup and Roll on Fri 8<sup>th</sup>

Bacon rolls on Sat 9<sup>th</sup>

Light Refreshments other weekdays

**Thur 7<sup>th</sup> – Fri 15<sup>th</sup> December. 10am to 4.00pm**

## Quethiock Church Christmas Concert

Featuring



Quethiock School Choir



Levow Kesson



Rosevere Hand Bell Ringers



**On Saturday 9<sup>th</sup> December at 7pm**

**\*\*\* Refreshments \*\*\* Raffle \*\*\***





**CHRISTMAS**  
**BINGO**

**Friday 15<sup>th</sup> December**

**2017**

**7:30pm**

**Eyes down at 8:00pm**

**At Millennium House,  
Pensilva**

# Johnny Cowling Christmas Special at St Ive Church

**Sunday 17<sup>th</sup> December at 7pm**

**Tickets £10 to include a pasty supper**

**Tickets available from:**

**Pat 362959**

**Brian 364010**



## Group Travel



Enterprise Park, Midway Road, Bodmin, Cornwall. PL31 2FQ

 +44 (0) 1208 77989

 [grouptourcoachhire.co.uk](http://grouptourcoachhire.co.uk)  [grouptourtravelcwl](https://www.facebook.com/grouptourtravelcwl)  [@grouptourtravelcwl](https://twitter.com/grouptourtravelcwl)

### 2018 EXCURSIONS

#### 2018

5 <sup>th</sup> JAN	PETER PAN, THEATRE ROYAL, PLYMOUTH
22 <sup>nd</sup> MAR	MYSTERY TOUR
10 <sup>th</sup> APR	SOUTH DEVON RAILWAY & DART CRUISE
18-24 APR	SCOTLAND AND THE ISLES
12&13 MAY	WINDSOR HORSE SHOW AND LONDON EXPERIENCE
22 <sup>ND</sup> MAY	KILLERTON HOUSE & GARDENS
19 <sup>TH</sup> JUN	HELFDOR RIVER CRUISE
22 <sup>ND</sup> JUL	JURASSIC SEA CRUISE

16 TO 70 SEAT COACHES AVAILABLE FOR PRIVATE HIRE, CORPORATE WORK, WEDDINGS  
(CAN INCLUDE STAG & HEN PARTY PACKAGE) AIRPORT BUS TRANSFERS.

FOR BOOKINGS AND BROCHURE PLEASE CALL

01208 77989 / 01208 72669

Website: [grouptourcoachhire.com](http://grouptourcoachhire.com) Email: [benneymoon@btinternet.com](mailto:benneymoon@btinternet.com)

# **CAROLS IN THE CAR PARK!**



**7PM TUESDAY 19<sup>TH</sup>  
DECEMBER**

**ST IVE CARPARK  
(BY PLAYGROUND)**

**COME AND SING WITH ST IVE SINGING  
GROUP ROUND THE CHRISTMAS TREE  
THEN ON TO ST IVE VILLAGE HALL FOR  
MINCE PIES AND HOT DRINKS! IF YOU WOULD  
LIKE TO BRING A BOTTLE, PLEASE DO.**

**BRING A TORCH! WORDS PROVIDED  
IF RAINING AT 7PM, MEET AT VILLAGE  
HALL.**

**FURTHER INFO: CLARE 382341**



# Chistingle

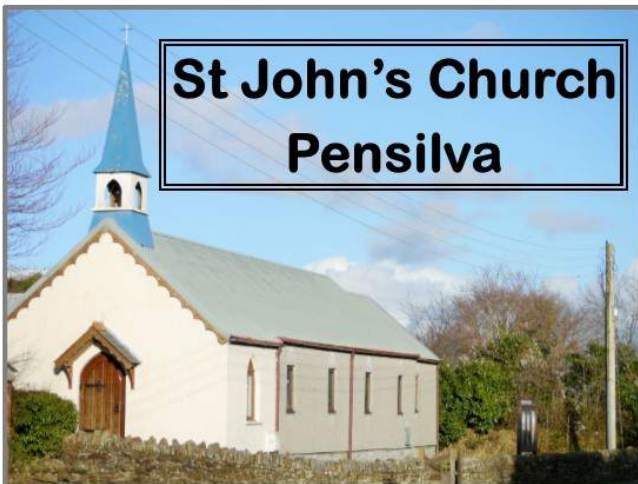
St John's Church

Pensilva

6.00 pm

Sunday 24th December

Come and join the celebration



3.00 to 5.00pm  
Sunday 28th January  
Sunday 25th February  
Sunday 25th March



These are events  
for family groups  
Look out for  
further details in  
the January Pump



NEW YEAR'S EVE

PARTY

Glitter

MILLENNIUM HOUSE,

7:30pm - 12:30am

ADULT'S £10, CHILD 2 - 16 £5,

TO INCLUDE DISCO & BUFFET

TICKETS ARE ONLY AVAILABLE

IN ADVANCE AND CAN BE

PURCHASED NOW BY

CONTACTING KAREN ON

01579 362196





New Years Eve at  
**The Manor House**



Rilla Mill, PL17 7NT  
Italian Themed Evening  
Food served 6pm – 9pm  
Booking is Essential  
please call 01579 362354

With a music request show to end the night with a bang!!!  
Italian Fancy Dress is Optional

**Starters & Desserts only available to accompany a main meal**

Starters

- Bruschetta served with olives & breaded mozzarella sticks - £5.95
- Homemade Minestrone Soup served with a warm crusty roll - £4.95
- Antipasto – selection of cured meats, olives, vegetables in oil, anchovies, Italian cheese, fig jam and slices of ciabatta - £6.95

Mains

- 9' Margarita Pizza - £9.95
- 9' Pepperoni Pizza - £11.95
- 9' Hawaiian Pizza - £11.95
- 9' Hot & Spicy Meat Feast Pizza - £13.95
- Meatballs in a tomato, garlic & chilli sauce on a bed of linguine - £10.95
- Classic Carbonara - £10.95
- Sandy's famous Meat Lasagne - £9.50
- Vegetable Lasagne - £9.50

Desserts

- Classic Tiramisu - £5.25
- Amaretto Pannetone & Butter Pudding served with Double Cream - £5.25
- Pannacotta served with fresh Raspberries & Raspberry Coulis - £5.25

Side Orders – To Add to a Main Course only

- Garlic Bread - £2.95
- Cheesy Garlic Bread - £3.50
- Side Salad - £2.75
- Our Rustic Chips - £2.75
- Cheesy Rustic Chips - £3.50
- Onion Rings - £2.00



# ***Pentiddy Community Woodland Volunteer Days***

Your chance to get involved with helping to look after  
Pentiddy woods!

---

**Sunday 14th January, Sunday 25th February and Sunday  
25th March 10am-4pm**

*Drinks, soup, bread and cake provided*

Come along and bring family and friends. This is a fun and rewarding way to give a little back to a local community project. It's a great opportunity to meet new people, learn new skills, spend time in the woods and have fun!

Those that come along and help get a share of some of the timber (once we have put aside the few loads for sale to raise funds for the years' insurance.)

***Accompanied children and dogs very welcome!***

Bring hand tools and work gloves if you have them. Loppers, billhooks, bow saws. We will have a small supply available. No experience necessary. Training given. Work to suit all abilities and ages.

***Come and share some good company, wholesome and  
productive work and delicious food!***

*Please contact us if you would like to come along so we know  
how much cake to make!*

*Ele and Anthony Waters: 01579 363775 or 07765 103504*

# St Ive Church Produce Market

Every 1<sup>st</sup> Friday 10:30 to 1:30pm

Homemade Cakes Fresh Vegetables

Jams Pickles Local made Pasties

Bric-a-brac and much more - also

## Home Reared Traditional Meat

Pork, Beef, Chicken, Dry Cured Bacon, Sausages from

## Trehill Farm Produce

*Cooked Lunch available from 11:30 only £4.50*

### DO YOU NEED A HELPING HAND?

Reliable, Friendly, Experienced, Mature local resident offering the following services:-

- Cleaning
- Ironing
- Shopping
- Light Gardening
- Dog Walking



CRB/DBS checked and fully insured.  
Competitive rates.

### Contact Jess

Telephone or text: 07934 764 327

Email: homeangel77@yahoo.com



Find us on Facebook

# OFFICES TO RENT COMING SOON

## MOMENTUM HOUSE



# UNIT 26

**PENSILVA IND. ESTATE  
ST. IVE ROAD, PENSILVA**

**Contact Mel Steeds  
for further details**

**07719 384 954**

**01579 363 282**



## Pensilva Memory Café

Are you caring for someone with Dementia, or do you perhaps have concerns about your own memory? It can be lonely and worrying but you're not on your own. Many people around you are in the same boat. You don't have to feel isolated. More people than ever are becoming dementia aware, and most organisations need, and want, to be dementia friendly.

You may have seen posters for Memory Cafes and wondered what they are about. They are a great place for people with dementia and memory problems to socialise in an informal and friendly atmosphere. Memory Cafes are held in Liskeard, Callington, Launceston, Downterry, Looe, and many more places in the South West. Most are held monthly, some are more frequent.

Pensilva has its own Memory Cafe. It is a small friendly group who meet once a month for tea and cake and a bit of relaxing fun. We might have some music, a simple game or quiz, and a bit of reminiscing. You can join in if you want to, but nothing is compulsory. We hope you will just relax and not worry about anything for a couple of hours. There is no charge but we do appreciate a donation in the region of £1 each towards expenses.

It might be worth coming along to join us just to see what goes on. You might find it beneficial to yourself, or your partner, or a parent, or friend. You might even enjoy it. Why not give it a try? You'd be most welcome. There's nothing to lose.

We meet on the fourth Thursday of each month from 2pm - 4pm. We'd love to see you at St John's Church, next to the Millennium Centre, PL14 5NF.

For more information contact Carolyn or Pat - 01579 363461 or 01579 362698  
email carolynandgeoff@gmail.com or patdilworth@hotmail.co.uk

If you are a carer of anyone, of any age or condition (not just dementia), you will benefit enormously from the help of Kernow Carers Service. Freephone 0800 587 8191. Leaflets are available at the cafe.

## *PENMILL ART GROUP*

**We are a small, friendly group using all art mediums. If you paint we would love you to join us. We meet at Millennium House  
10-2 every Monday.**

**Please come & see us or phone Pam on  
01579 363441.**

# **Community Lunch**

First Sunday of every month 12pm for 12.30pm  
3 Course Lunch with Tea and Coffee

**Adults £7.95p**

**Children (*Under 12*) £4.95p**

At Millennium House, Pensilva

**Bookings required:**

**Call Graham or**

**Charmayne**

**on 01579 363096**



# **Pensioners Lunch**

2 Course Meal plus Tea or Coffee  
**Only £5.50**

**Every Tuesday here at Millennium House**

**Speak to our reception or  
telephone Graham on 01579 363096**



**So why not join us for Good  
Food and Good Company, all  
on the day you collect your  
pension?**



## Cornwall Good Neighbours Service

Could you be a Friend?  
Or do you need Befriending?

**Doing the small things that make a big difference**



Many older people in Cornwall can have their lives changed through contact with befriending schemes. Loneliness and isolation are common among older people living alone.

Volunteers provide a range of services to people who require additional support to remain independent and active in their community. Anyone can become a volunteer and make an incredible difference to someone else's life. Even an hour a week will make a difference.

### Services provided by volunteers include:

- Home visits, sharing a cup of tea and a good conversation
- Reading to those who are visually impaired
- Assisting with correspondence
- Accompany people on short walks
- Play a game of cards or scrabble for example
- Accompany clients on shopping trips or shopping on their behalf

### There is no specialised requirement for volunteers, you just need to;

- Possess a willingness and desire to help
- Be committed to providing reliable, consistent support
- Identify how much time you are able to comfortably give
- Identify the kind of service you would like to offer
- Enjoy sharing your time with others and meeting new people

### The benefits to both volunteers and older people are numerous and rewarding;

- You meet new people
- People retain their independence and self-esteem
- Real difference to the life of someone else
- Volunteers experience a feeling of contributing to an invaluable service and of making a real difference to the life of someone else
- You learn new things about others and the area in which you live

Could you be a member of this fantastic team and help to improve someone's quality of life? If you would like more information, please contact:

Carol Jane, Service Manager

**Tel : 07771 345337**

ROYAL  
VOLUNTARY  
SERVICE

Together for older people



## All Being Well

Your local, friendly gym.

Over 17 years working in our local community to improve health, fitness and well being.

Call us on **01579 363890** or drop in to see us at Millennium House, Pensilva.

### Opening hours:

Mon/Wed/Fri 10.00 to 3.00

Mon & Fri 5.00 to 9.00

Tues/Thur 9.00 to 1.00

Saturday 10.00 to 1.00

Email: [abwgym@gmail.com](mailto:abwgym@gmail.com)

## Badminton?

Come and join our relaxed and friendly group at Pensilva

Millennium House

**Mon & Tue 7.30 - 9.30pm**

**Friday 8.00 - 10.00pm**

For further info phone

**Nigel or Carol on**

**01579 363594 or**

**07885 798370**

## PENSILVA VILLAGE HALL

Anyone wishing to book the hall for meetings, birthday parties or fundraisers please contact Peter or Jackie Browning on **01579 363212** or email **peter@pensilva.freeserve.co.uk**.



Please note that as well as hall rent there is a coin meter for heating at 40p/hr.

We hold a Hall users and committee meeting on the fourth Monday of each month at 7.00pm. Please feel free to come along and support us.

### Organisations that meet in Pensilva Village Hall

Meeting Times	Organisation	Contact Person	Telephone
Mon. 4:00 - 6:00	Brownies	Mrs Martha Oliver	01579 362239
Alternate Wed. 2:30 - 4:00	Wednesday Club	Mrs Jean Conner	01579 363221
Wed. 7:00 & various	Snooker Club	Mr Philip Bond	01579 362091
Thu. 6:00 - 8:00	Guides	Miss Caroline Hambly	01579 363228
Fri. 1:00 - 3:00	MIMS	Chris	01579 343702
Fri. 4:00 - 5:00	Rainbows	Mrs Lynne Bond	01579 362091

### St Ive Institute & Village Hall

Every Wednesday	10:30am to 12 noon 10:30am to 11:30am	Coffee morning Travelling Post Office
First Monday	7:30pm	St Ive Gardening Club
Every Monday & Thursday	7:00pm	St Ive Snooker Club

**NHS  
REGISTERED**



**SUPPORTED BY  
LOCAL DOCTORS**

## **Do you suffer with various long term health conditions?**

Come along and join our small, friendly group.  
For company, light exercise and support.

Upstairs in Millennium House every Monday from 12.30pm - 2.30pm

For more information contact us:

Pauline **01579 345989**

Jeanette **01579 363691**



The **co-operative**  
Community Fund



### **Struggling with Sight Loss?**

iSight Cornwall offers practical help to people living  
with sight loss in Cornwall including:

Low Vision: Advice for low vision aids

Assistive Technology: Advice on products

Benefits Advice: Assistance to claim entitlements

Equipment Demonstration: Advice on gadgets

Social Clubs & Activities: Links to clubs & activities in the county

For more details Telephone 01872 261110 or visit

[www.isightcornwall.org.uk](http://www.isightcornwall.org.uk)

## **PENSILVA HEALTH CENTRE - PATIENT PARTICIPATION GROUP**

We are a group of patients who meet regularly with the Health Centre to bring forward for discussion ideas, comments and suggestions about your surgery. In the past we have held open days, helped at the flu clinics and participated in a trial Peoples Commissioning Board Project.

We also organise a Carer's and bereavement group (see below) and a 'Walking for Health' group

**(Contact Ivor Vaughan 07979 934604 ).**

You can contact us directly or through the Health Centre.

## **PENSILVA HEALTH CENTRE CARERS AND BEREAVEMENT GROUP**

**Are you a carer, bereaved or lonely? Then come along and join our Group. Tea, Coffee and plenty of friendly chat and, when possible, local trips to various venues.**

**Meetings are held every third Thursday of each month at 11.30.a.m.  
Meet in Millennium House car park.**

**For any information please contact Jean Connor 01579 363221**

## **PENSILVA HEALTH CENTRE - Baby Clinic**

**First Thursday of every month, from 1 to 2pm**

A friendly health visitor will be on hand to weigh your baby and give friendly, professional advice.

**For information call the health centre on**

**01579 362249**

# St Ive Church

## Services at 11:15am Every Sunday

- Dec 3rd      **Holy Communion**
- Dec 10th     **Family Service.** Christmas lunch follows this service.
- Dec 17th     **Holy Communion**
- Dec 24th     **Christmas Eve Holy Communion 9:30pm**
- Dec 31st     **Together at Ten at Menheniot 10am**

---

## Other December Events

- Fri 1st    **Home Produce and Bric-a-brac with Lunch** 10:30-1:00pm  
Home made cakes etc, fresh vegetables, locally made pasties, pickles, jams and much more plus farm-fresh meat from Trehill Farm Produce.
- Fri 1st    **St Ive Live Nativity** 7pm with live animals, carols, and children dressed up as kings, angels and shepherds. Followed by mince pies.
- Thu 7th to    **Christmas Tree Festival** 10am to 4pm Light refreshments. Soup  
Fri 15th.        on Friday 8th. Bacon Rolls on Sat 9th.
- Sun 10th     **Christmas Lunch** 12:45. Booking essential.
- Thu 14th     **Carol Service** 11am
- Sun 17th     **Johnny Cowling Christmas Special** 7pm

Reverend Margot Davies                      **01579 208698** email [margotaj@tiscali.co.uk](mailto:margotaj@tiscali.co.uk)

Church Wardens            Brian Dwelly            **01579 364010** email [btdwelly@aol.com](mailto:btdwelly@aol.com)

Colin Catchpole **01579 383867** [ccatchpole@hotmail.co.uk](mailto:ccatchpole@hotmail.co.uk)

Donations for Liskeard Food Bank can be left in the Church each day between 10am & 4pm

Please let the Priest or Churchwarden know of anyone requiring a home or hospital visit.



# ST JOHN'S CHURCH, PENSILVA

## Services for December 2017

*Anglicans and Methodists share services at 11 am each Sunday, coffee served before service*

Sunday 3rd	(9.30am 11 am	Anglican Benefice Eucharist at St Cleer) Rev. Chloe Jones, Holy Communion
Sunday 10th	11 am	Café Church
Sunday 17th	11 am	<b>Carol Service</b>
Monday 25th	10.30 am	Christmas Day Worship, Rev. Sue Hill
Sunday 31st	11 am	United Benefice Service

**Christmas Festival at St. John's**, 10am to 4pm on Friday 8th, Saturday 9th and Sunday 10th, with light refreshments.

**Lunch 12 - 2pm on Saturday 9th** Dec followed by stalls and afternoon tea.

### Sunday 10th December, 6pm Candlelit Concert with Con Brio

**Café Style Church** followed by coffee and chat, Thursday mornings, 10am, everyone welcome.

**No Afternoon Tea** in December.

**Prayer Group:** Fri 17th & Tue 28th November. Please ring Eileen on 362580 or Carolyn 362698 if you would like prayer for yourself or someone else.

*For further details of the Services held in St John's, if you know of any illness or need in the village or if you would like your wedding or baptism in the church, please contact: Geoff Cox - 362698 or Frances Tucker - 363718*



**SEW, KNIT AND NATTER.  
WHY NOT JOIN US ON  
THE LAST TUESDAY OF EACH MONTH  
for sewing, knitting or just for a chat and a  
cup of tea or coffee and cake.**

**We meet at ST JOHN'S CHURCH, PENSILVA from 2pm to 4pm.**

# **St Ive Methodist Chapel**

## ***Services for December 2017***

- Sun 3rd Dec**      11am    Mr Bernard Melling  
                                No Evening Service
- Sun 10th Dec**    11am    Mr Chris Clark  
                                6pm    Concert at St John's Pensilva
- Sun 17th Dec**    11am    Mrs Linda Eastlake  
                                3pm    Cornish Language Carol Service  
                                No Evening Service
- Christmas Day**    9:30am Christmas Celebration. All welcome.
- Sun 26th Dec**    11am    Carol Service with Mr Keith Mutton  
                                6pm    Carols and Christingle around the tree at St John's

"Village Churches Together" group will meet 7:30pm at St Ive Methodist Church on Tuesday 5th December. Everyone welcome. More details from Keith on 01579 382334.

The Chattermakers Group will meet on Thursday 7th and possibly the 21st December in the Guild room from 7:30pm. This is a group open to anyone that likes to do any craft and would like to share with others of a like mind (hence the 'Chatter' bit !!) Anyone wanting more details please contact Kathryn on 01579 382334. All welcome.

The Village Church Prayer meeting will also be held at St Ive Chapel on Thursday 7th and 21st December from 7:30pm. All welcome

# **Trerosa Studios**

## **Pottery & Woodturning activities for you to enjoy**

**Well equipped**

**All materials provided**

**Help / tuition from qualified teacher if required**

**01579 647247 or 07486 089466**

**Email: [bob@trerosacrafts.co.uk](mailto:bob@trerosacrafts.co.uk) [www.trerosacrafts.co.uk](http://www.trerosacrafts.co.uk)**

**INDEPENDENT  
FAMILY  
FUNERAL  
DIRECTORS**



Undertaking your individual  
needs with efficiency,  
compassion and care...

Perfect Choice Prepayment  
Funeral Plans from £3189.00

(Prices correct as at 01.01.2017)

**01579 362358**



Avalennek, Caradon Town,  
Upton Cross, Liskeard  
Cornwall PL14 5AR  
Telephone 01579 363598  
Mobile 07901 538132  
[chrisrounsevell@tiscali.co.uk](mailto:chrisrounsevell@tiscali.co.uk)

## **HOG ROAST EQUIPMENT HIRE AND MEAT SUPPLY**

Hog Roasts For Those Special Occasions  
Self Catering or Hassle Free Service  
Everything done to your special requirements

**CHRIS ROUNSEVELL  
TRADITIONAL BUTCHER**



## Local Accountant offering fixed fee accounting services

With over 20 years experience, I am a fully qualified, friendly, local accountant

- ✓ Annual Accounts for Sole Traders and Partnerships
- ✓ Book Keeping & Payroll
- ✓ Personal Tax Planning
- ✓ Company Accounts
- ✓ Business Support & Advice

- ✓ Self Assessment tax returns
- ✓ iXBRL tax filing
- ✓ Tax investigation Fees Insurance
- ✓ Company Secretarial work
- ✓ Tax calculations for Sole Traders and Partnerships

Kate Vaughnley FCCA - Chartered Certified Accountant

Website : [www.kvaccountingsolutions.co.uk](http://www.kvaccountingsolutions.co.uk) or Email : [katevaughnley@gmail.com](mailto:katevaughnley@gmail.com)  
Telephone : 01579 364083



## GRAB LORRY HIRE

PLANT HIRE & GROUNDWORKS

07970 270218 | 01579 344402

**MORE COST-EFFECTIVE THAN SKIPS  
FOR SOIL, RUBBLE & GREEN WASTE  
REMOVAL!**

CAN REACH OVER WALLS &  
FENCES FOR COLLECTION  
FROM INACCESSIBLE AREAS

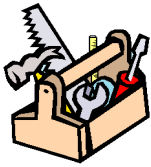
SKIP BAGS AVAILABLE FOR  
SMALL JOBS





# KEEP IT TIDY

General Property Maintenance  
including Decorating, plus Electrical



**HONEST PRICE**  
for  
**QUALITY WORK.**



**No Job Too Small**

**Kit Rickard**

18 Higher Glen Park  
Pensilva

**Phone:** 01579 363378

**Mobile:** 07855 699071

**Email:** [KITKeepItTidy@hotmail.com](mailto:KITKeepItTidy@hotmail.com)



## FERN LODGE

Boarding Kennels & Cattery

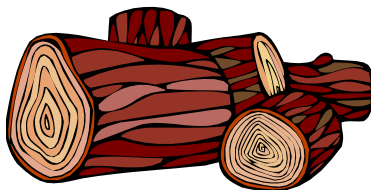
- Fully insured and licensed
- Individual care and attention
- All diets cared for
- Early morning walks, late evening Strolls & plenty of playtime
- Quiet rural setting
- Dog Training
- Knowledgeable & friendly staff
- Collection & delivery service.



Come and visit our on site pet shop  
Vast variety of Dog and Cat food  
Top names all at competitive prices.  
FREE delivery service inside the parish!

Tel: 01579 363030  
Golberdon Road, Pensilva

## SEASONED LOGS



**MIXED LOAD**  
or  
**HARDWOOD**

Tel Jonathan

Mobile 07966 070725

or  
01579 363157

Also tree/hedge work  
undertaken

## DAVID HEWETT GARDEN SERVICES

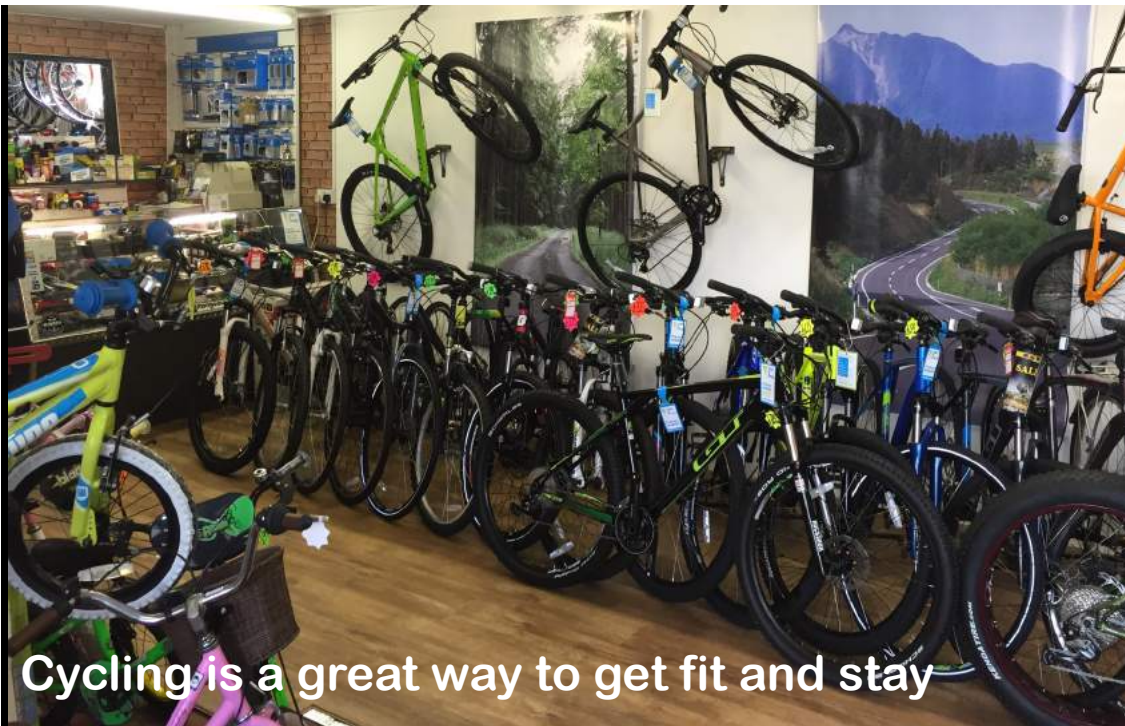


Lawn mowing, grass cutting,  
strimming, hedge cutting,  
general garden maintenance

20 years' experience

Fully insured

**01579 363796**



Cycling is a great way to get fit and stay

Great range of bikes always in stock!  
Expert repairs with quick turnaround!  
Reasonable prices!  
0% Finance available on new bikes!  
Professional, friendly advice!

**Liskeard Cycles** Pig Meadow Lane, Liskeard.

Proprietor: Russell Hall      [www.liskeardcycles.co.uk](http://www.liskeardcycles.co.uk)

Tel: 01579 347696      email: [liskeardcycles@gmail.com](mailto:liskeardcycles@gmail.com)

# SCOTT BERRIDGE

Complete Property Refurbishment & Building Maintenance

INTERNAL & EXTERNAL DECORATING

PAPER HANGING • TILING SPECIALISTS

PLASTERING • PLUMBING • CARPENTRY

FENCING • DECKING • PATIOS

- 
- Local Pensilva • 25 years experience in Cornwall.
  - Proper job • Clean & Tidy • Good references
  - Trustworthy • Excellent prices. • Free estimates.

[scottberridge@me.com](mailto:scottberridge@me.com)

07889 218 710 (Daytime)      01579 362 006 (evenings)



# Computer Tamer

Home help

for all your Computing needs.

01579 320547 t.bedden@btinternet.com

Down to earth, jargon-free tuition, advice, repairs, troubleshooting, upgrades & installation.

Puzzled by email setup, anti virus, backing up photos or any other aspect of using your machine?

Need that computer set up or repaired?

Need a website designed or updated?

For all this and more call Tony for a free chat about your needs. I can visit you at your home. A reasonable hourly rate with a 1 hour minimum to cover travel costs. Talk to you soon.

# Window Cleaner Window Cleaner

Also any upvc cleaned

i.e. fascias, gutters, etc.

gutters cleared & unblocked

Please phone Rob

07709 053464

# Window Cleaner Window Cleaner

Save Costly Energy!



## SOLARTEC

Windows & Conservatories Ltd

**'A' Rated WINDOWS & DOORS  
at BEST PRICES EVER!**



Professionally fitted and finished by us with a



10 year ins. guarantee.

In all colours



**NEW**

**FACTORY SHOP  
SUPPLY ONLY**

For all your windows, doors, conservatories, fascia, trims, guttering and sealants

**7-10 DAY TURN AROUND ON WINDOWS,  
DOORS and CONSERVATORIES**

**TEL: 01579 343425**

**FAX: 01579 344500**

WEBSITE: [www.solartecwindows.co.uk](http://www.solartecwindows.co.uk)

EMAIL: [sales@solartecwindows.co.uk](mailto:sales@solartecwindows.co.uk)

**KEEPING JOBS IN CORNWALL**



# PJR Garden Services

## Phil Rule

All aspects of garden work - grass / hedge cutting, patios, fencing etc.

**Mobile (note new number):**

**07387 449004**



**OPEN FOR RETAIL, TRADE & COMMERCIAL ENQUIRIES**

# CORNWALL TILE CENTRE

[www.cornwalltile.com](http://www.cornwalltile.com)

tileitalia

The Natural  
TILE & STONE COMPANY

BESPOKE  
TILE IMPORTS



Tiles & Stone for:

- ◆ Bathrooms & Kitchens
- ◆ Living Areas
- ◆ Conservatories
- ◆ Patios & External Areas
- ◆ Wet Rooms & Spas
- ◆ Swimming Pools
- ◆ All Commercial Applications

- ◆ Local & National Delivery Service
- ◆ Sample Loan Service
- ◆ Free Quotations
- ◆ Free Design Ideas & Planning Advice
- ◆ Trade Enquiries Welcome
- ◆ Wet Room Specialist
- ◆ Full Range of Adhesives & Grouts

### Pensilva Showroom

Open Mon - Thurs 8.30am - 5pm  
Friday 8.30am - 3pm  
Saturday 9.00am - 1pm

### Wadebridge Showroom

Open Mon - Fri 9am - 5pm  
Sat 10am - 3pm



**01579  
362264**

**DISCOUNT TO ALL PUMP READERS**



## Affordable Counselling

Caring, confidential,  
non-judgemental

- Increased confidence and self esteem
- Help to cope better at difficult times
- Improved relationships
- Clarify confused thoughts & feelings
- Assertiveness
- Personal insight
- Improved emotional health
- Available for youth and adults

**Isabelle McGarahan BA, PGCE**  
**Dip in Therapeutic Counselling,**  
**Member of ACC, DBS cleared**  
[www.im-counselling.org](http://www.im-counselling.org) email:  
[isabelle@im-counselling.org](mailto:isabelle@im-counselling.org)  
**01579 344090/07857326229**

## PROBLEM?

Folks coming to visit? No space to put them up?

## SOLUTION!

Book them into "**The Birches**", purpose built holiday bungalow, just two miles from Pensilva.

Sleeps 6: fully equipped: linen & towels provided : dogs welcome: free WiFi.



Call Vanessa on **01579 362377**.  
**10% off** tariff with this ad!

## PENHARGET FARM B&B

PENSILVA



TEL: JULIE ON 0 1579 36222 1

[www.penarget-farm-cornwall.co.uk](http://www.penarget-farm-cornwall.co.uk)

[penargetfarm@gmail.com](mailto:penargetfarm@gmail.com)



## NICOLA GREENE

BSc (hons) Podiatry MChs

HPC Registered Chiropodist/Podiatrist

**Home Visit Practice treating all  
your foot care needs:**

- Nail Cutting
- Corns and Calluses
- Thickened Nails
- Dry Cracked Skin
- Verrucae
- Foot Pain
- Diabetic Foot Assessments
- Wound Care

T: 01579 590027

T: 01752 291565

M: 07786164205

E: [nicki\\_greene@yahoo.com](mailto:nicki_greene@yahoo.com)





*The*  
**RACEHORSE  
INN**



*Gastro Pub*

---

**Head Chef Phillip Bradshaw**

---

Ray and Flori welcome you to  
the Racehorse INN

A fine food experience in a convivial  
atmosphere

Our superb Sunday lunch is one to be tried

Open Every Day for Lunch and Dinner

[info@racehorseinn.co.uk](mailto:info@racehorseinn.co.uk)  
[www.racehorseinn.co.uk](http://www.racehorseinn.co.uk)

Take-out: Pizzas & Fish'n'Chips now available



**North Hill Village, Cornwall, PL15 7PG**

**01566 786 916**

# MARK FITCH CHIMNEY SWEEP

- \* BRUSH & VACUUM
- \* CLEAN, RELIABLE SERVICE
- \* COVERING ALL S.E. CORNWALL
- \* DISCOUNT FOR MULTIPLE CHIMNEYS
- \* COWLS & GUARDS FITTED
- \* STOVES SERVICED



*Call  
Mark on:*



01579 350762  
07773 462643

## Caradon Gas Services Limited

Service Agents for Intergas and ATAG heating range of boilers



[www.intergasheaters.co.uk](http://www.intergasheaters.co.uk)



[www.atagheating.co.uk](http://www.atagheating.co.uk)

**Barry Matthews Eng Tech MIGEM**  
Homeleigh, Crow's Nest, Liskeard  
Cornwall PL14 5JT  
01579 342934



## J. H. Simmons

Painting & Decorating



Interior  
&  
Exterior



**No Job Too Small**

References Available

For more information  
Please call John  
01579 362688

7 East Park, Pensilva

## D.J.A. BUILDING SERVICES

ALL ASPECTS OF PROPERTY  
MAINTENANCE BUILDING &  
REFURBISHMENT

- \* Bespoke Furniture and Kitchens
- \* Wardrobes and Bookcases
- \* Garden Sheds, Poultry Houses & Small Animal Shelters
- \* Over 30 years' experience
- \* Fully insured
- \* References available
- \* Free estimates
- \* No VAT

**Call David on 01579  
364050 / 07767662635**

# Westwood Garden Maintenance



*Antony Watts*

*Grass Cutting, Clearance*

*Weeding, Turfing*

*Hedge Cutting*

*Patio Cleaning, Planting*

*Regular Visits / One-off Contracts*

*Residential & Commercial*

**FREE ESTIMATES**

01579 362019 [www.westwoodgm.co.uk](http://www.westwoodgm.co.uk) 07952 094472

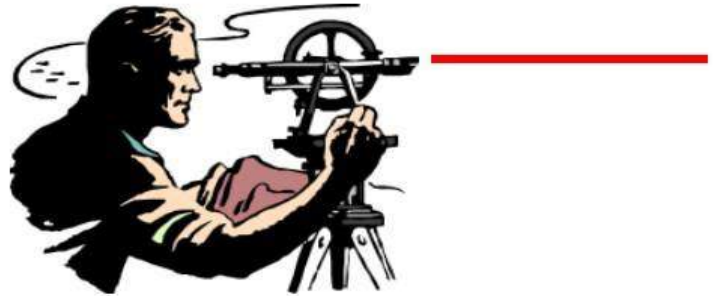
## Martin Hoare – Local, Reliable, Competitive



WHEEL DIGGER FOR HIRE  
ALSO AVAILABE 'BREAKER'  
AND NEW CONCRETE  
'CRUSHER BUCKET'

ALL AT COMPETITIVE RATES

GROUND WORKS  
DRAINAGE  
NEW DRIVEWAYS  
SEPTIC TANKS &  
'SOAK AWAYS' INSTALLED



LASER LEVEL FOR HIRE  
QUOTES AVAILABLE



Phone 01579 363517

or

Mob 07863 291213



## Steve West Aerial Services

Installations / Repairs to  
TV Aerials, Satellite Dishes  
and Radio

Customised to your requirements

Wireless network &  
Mobile phone extensions

TV mounting on walls  
Help setting up systems  
and demonstrating.

Phone 01726 212761

Mobile 07941 606 183

e-mail [stevewestaerials@uwclub.net](mailto:stevewestaerials@uwclub.net)

## CORNWALL PET SERVICES

HOME BOARDING FOR DOGS  
DOG WALKING  
HOME VISITS

Situation: Between Liskeard and Callington

- Home Boarding for Dogs – safe home environment, off-road walking
- House calls to suit your family pets
- Dog walking
- Fully insured
- Police Checked

**Chris Day**  
**Birchill**  
**Quethiock**  
**Liskeard Cornwall**  
**PL14 3SQ**  
**Tel 01579 340438**

Email – [cornwallpetservices@gmail.com](mailto:cornwallpetservices@gmail.com)  
[www.cornwallpetservices.wix.com](http://www.cornwallpetservices.wix.com)





**THE HOME OF WOOD**



**OPEN TO THE TRADE & PUBLIC  
FOR ALL YOUR HOME AND GARDEN NEEDS**

**DECKING • FENCE PANELS • OAK FLOORING • STRUCTURAL TIMBER  
GARDEN FURNITURE • GATES • DOORS • CEDAR CLADDING**

**TELEPHONE 01503 240308**

**EMAIL: STACY@WHBOND.CO.UK**

---

**WWW.BONDTIMBER.CO.UK**

**TRERULEFOOT • SALTASH • PL12 5BW**



# **DOG GROOMING**

**40 YEARS EXPERIENCE**



**SMALL and MEDIUM Dogs  
Groomed to Your Request**

**LISKEARD AREA  
Inquiries Welcome**

**Call Patricia: 07517 658862  
TO YOU OR TO ME**



Domestic Electrical  
Property Maintenance  
Interior & Exterior Work  
Carpentry :: Decking  
Kitchens :: Bathrooms  
Wall & Floor Tiling  
General Plumbing

**MCCARTHY PROPERTY MAINTENANCE**

**Electrical Safety  
Register** incorporating  
ELECTSA  ECA  
Certification Ltd

**HIGHLY REGARDED LOCAL BUILDER  
COMPETITIVELY PRICED  
COVERING THE SOUTH WEST**

Contact Dominic

07968 599 675

01579 362 945

[info@mccarthypropertymaintenance.co.uk](mailto:info@mccarthypropertymaintenance.co.uk)

[www.mccarthypropertymaintenance.co.uk](http://www.mccarthypropertymaintenance.co.uk)

## **VISIT CALLINGTON**

**A Fair Trade Town**

**Whether you need white goods or carpets for your home,  
or need to mark a special occasion, with a gift or card,  
you can find it in Callington. From a light bite in a tea room or  
Cornish Pasties to take away to dinner in a restaurant.**

**From antiques and curios, bicycles and D.I.Y. to bridal wear.**

**A great choice of independent specialist shops.**

**There is so much more - Visit to see for yourself**

**Callington Traders Association**



**SHOP LOCAL  
AND KEEP CALM**



# Pensilva Stores

**Amazing Value**

**Premier**  
a great deal more from your local store  
**Mon-Sat. 7:00 AM. – 9:30 PM.**  
**Sunday 8:00 AM. – 9:30 PM.**

- ✓ Fantastic Special Offers every month!!! (See store leaflets)
- ✓ Come and Check out our great deals on Wine, Beer and Spirits
- ✓ Local Produce: Homemade Butter and Clotted Cream, Meat from our local butcher
- ✓ Cornish Fresh Fruit and Vegetables
- ✓ Fresh Bread, Pasties and Cakes
- ✓ Take Away Coffee, tea and hot chocolate
- ✓ Newspapers and Magazines, Greeting Cards
- ✓ Paypoint, Lottery

**\* Free to use ATM \***  
**\* Card Payment \***

*Friendly Staff + Service with a Smile !!!*

**Pensilva Stores is a family run business who have been serving local people and visitors for more than 21 years.**

Higher Road, Pensilva, Liskeard, Cornwall PL14 5NQ

Tel: 01579 362547

# MENDOLOGY

## Garage Door Specialist

- Repairs
- Servicing
- Installations

Out of hours service  
call Dave anytime 07974 442645


**MENDOLOGY** COMMERCIAL DOORS LTD

[www.mendologydoors.co.uk](http://www.mendologydoors.co.uk)

**01579 363760**

# PensilvaCars

01579 363516

- ✓ MOTs Class 4
- ✓ Service
- ✓ Repair
- ✓ Tyres
- ✓ FREE Courtesy Car
- ✓ Car & Van Sales
- ✓ Diagnostics
- ✓ Air Conditioning
- ✓ 

**We have offered a supply, fit & balance of tyre service for 10 years at competitive prices.**

**Most of our tyres can be supplied the same day.**

**LOCAL RECOVERY £45.00**

**[www.pensilvacars.co.uk](http://www.pensilvacars.co.uk)**

**[pensilvacars@hotmail.co.uk](mailto:pensilvacars@hotmail.co.uk)**

We can service and repair your car to manufacturer specification, keeping your dealer warranty without main dealer expense.







# KEITH RICHARDS

## Motor Body Repair Specialists

A family run business with fully equipped & maintained workshops & a focus on  
Customer Care

- ◇ Motor Body Repair Specialist
- ◇ Mechanical Repairs
- ◇ Servicing to All Makes & Models
- ◇ Computer 4 Wheel Alignment
- ◇ 24 Hour Recovery Service
- ◇ Renovations & Re-sprays
- ◇ Member of RMI (Retail Motor Industry Federation)
- ◇ Latest Diagnostics (including specialists for VW, Audi, Seat, Skoda & Vauxhall)

With over 30 years' experience we aim to provide you with:- Value for Money -  
Friendly Service - Professional Approach - Expert Advice that you Can Trust  
(Visit our website for more details)

Pensilva Industrial Estate, St Ive Road, Pensilva, Liskeard, Cornwall PL14 5RE

Tel: 01579 362593

Email: [keith@keithrichardsmotorbody.co.uk](mailto:keith@keithrichardsmotorbody.co.uk)

Fax: 01579 363194

Website: [www.keithrichardsmotorbody.co.uk](http://www.keithrichardsmotorbody.co.uk)



Wm. Newham & Sons Est. 1835

Proprietor Robbie Savill AWCB

## CHIMNEY SWEEPS & BLACKSMITHS



CHIMNEY SWEEPING

BIRD GUARDS, COWLS & POTS FITTED

CCTV INSPECTIONS & SURVEYS

STACK REPAIRS & REBUILDS

RIGID STEEL SYSTEMS ERECTED

STAINLESS STEEL and PUMPED CONCRETE  
CHIMNEY LINING

STOVES SUPPLIED, INSTALLED & REPAIRED

FIREPLACE ALTERATIONS & RENOVATIONS

FULL RANGE OF FIREPLACE FURNITURE  
made to order

**01579 347777**

need somewhere to stay ?  
between homes ?  
family/friends visiting ?

Cutkive Wood  
  
Holiday Lodges

ideal for Pensilva  
& St.Ive

please call Jackie on  
01579 362216

# J.J.CHILD

## PLUMBING AND HEATING ENGINEER

### OIL AND GAS APPLIANCE SERVICE , REPAIR AND BREAKDOWNS

### LANDLORD'S CERTIFICATES

OVER 25 YEARS EXPERIENCE  
CALL JOHN ON 01579 362336  
MOBILE 07837921086



502322

# Bargain Corner Free Ads up to £50

Ads are free for items up to £50. £5 charge for items over £50. Please ring the Parish Office on **01579 363096** or leave a note at Millennium House reception or email [parishpump@btconnect.com](mailto:parishpump@btconnect.com).

**\*\*\*Please let us know when your item has sold\*\*\***

Complete new **Toilet set** inc fittings & seat. Never installed. **£25**.  
Wickes **Garden Shredder** **£10**  
**01579 363812**

**Riding helmet**, unused, size 55 - 6<sup>3</sup>/<sub>8</sub>.  
**£25** ono.  
Pair half brown suede chaps, size med., unused, with gloves size small. **£10**  
**01579 382315**

King-size (5') **bed w/ headboard**. Sprung base & mattress. Good quality **£20**.  
Grey metal, 4-drawer **filing cabinet**. Good storage, suitable for use in garage. **£10**  
Free-standing **cupboard**. 103cm tall. Two shelves plus base. Suit larder items, books or other. **£5**.  
**Exercise Bike** **£10**  
Hotpoint **spin-dryer** de-luxe **£10**  
**Buyer collects. 07475 589587**

4ft 6ins x 6ft 3ins double metal **bed frame**, black and brass, no mattress. Extremely good condition. **£30** Buyer collects.  
**01579 383915**

Waterproof **Walking Shoes** with long laces and ski hooks. Grey. Size 6. Worn once. **£20. 01579 382888** (St Ives Cross)

Dremel Moto Saw. As new condition **scroll saw/fret saw**. Ideal for hobbyists. Own, plastic carry case but is missing vacuum cleaner adapter & instruction booklet. Instructions available on line. **£40. 01579 362207** (Pensilva)

5ft teak coloured, rattan effect **wooden bed** with metal base. No mattress.  
**07841 717913**

Royal Sovereign **Strawberry Plants**. Potted £0.75 each. Bare rooted £0.60 each. **01579 320401**

Britax child's **car seat** for toddler. Hardly used. **£40. 01579 343435**.

**Armchair**. In good condition. Mushroom pink. **£15. 01579 384029** (St. Ives)

ZIA Petite Star 3 double wheels **buggy**. No waterproof cover but extremely good condition. **£40**.  
**07733 057857** or **01579 382198**

Brand new, never worn, **motor bike helmet**, with visor and inside sun visor, red, grey & white. Size medium. Paid £90, will accept **£30** or nearest offer.  
**07980 284002**

Superdry clothing **2 windcheaters**, black with fleece lining. excellent condition **£20 each** ono **2 hoodies**, 1 purple, 1 navy, good condition **£15** each or ono  
Black sherpa lined **windcheater**, excellent condition **£30** ono  
All sizes XS & S  
Jack Wills **wool sweater** size 8 and Johnnie B red Sherpa lined hoodie age 11-12 **£10** each ono  
Photos can be emailed. **07724 111132**

Berry's **sideboard**. Circa 1960s. 171cm high x 44.5cm deep x 78cm high. 2 cupboards with one reversible door. 4 drawers, one felt cutlery drawer. **£50** ono.  
Unusual iridescent paper **side lamp**. Approx 31" high on small base. **£5**.  
**Buyer collects. 01579 345783**.

**Chico table-mounted baby seat £10.**  
**01579 383560.**

Child's Encore **Spanish Guitar**, Model Number ENC34. John Hornby Shewes & Co Ltd. With case in VGC. **£25.** No Offers. Original **Belfast sink** 24"L x 18"W x 10" D. One slight chip. Ideal for garden use. **£35.** New Dulux Trade Vinyl Matt Tough Wipeable Finish Cornflower **White Emulsion.** **£20** per 5l tin. 5 tins available. (Normal price £40+VAT per tin). Bosch Universal **300mm cutting disc** for bricks, blocks and concrete, only used for a few minutes. Still in packaging. **£10.**  
**01579 384658**

**Underground Cable**, approximately 16m, 3 core, 2.5mm, 20mm diameter. **£20** 5ft teak coloured rattan effect wooden bed with metal base. No mattress. Good condition. **07841 717913**

**Reikie or Massage Table etc.** Very good condition. (Fold away). **£35.** Pensilva area. **01579 363192**

**WELMAR Piano.** Upright, 2 pedals, 52 keys, Length 55", height 41". Bought from and regularly tuned by Evan Hatch (Pianos) at Launceston. **£1300.**  
**01579 363010**

**Ladies motorbike jacket** Rayven, size 12, black/pink, as new. **£50.**  
**Men's motorbike boots** size 11, RST, breathable/waterproof, vgc. **£25.**  
**Men's black leather bike jacket,** 52L, & trousers, 40L, TARCA, vgc. **£50** the set.  
**Baby car seat** (Graco) blue with cream/pink flowers design, vgc. **£10.**  
**Baby front carrier,** blue check with teddy motif design material, new, still in bag. **£5.**  
**Baby bouncer** for up to 6mths. East coast, light fawn/with white polka dots design material, vgc, **£10.**  
**07743 416676** (Minions area)

Folding **3-wheel walker** with brakes and bag. Ideal mobility aid. Suitable indoor/outdoor. Hardly used. **£50. 01579 363081.**

**Bath Hoist** Gentle lifting/lowering. As new. Cost £180. Sell for **£50. 01579 362800.**

Electric Sovereign 1800W **Chainsaw** with manual **£35.** No offers.  
**01579 362340**

**Nest of 3 tables** yew wood and glass top. Good condition **£45.**  
**3ft Mattress** in clean condition. Ex quality. **£50.**  
**3ft Divan** to match mattress. VGC. **£40.**  
**3ft Pine headboard** very attractive **£20.**  
**01579 343990** or **07553 928333**

**Artificial Christmas Tree** (Green, 6' 6") Lovely tree in good condition. **£10.** Buyer collects. St Ive. **01579 383583**

Targus Notepac plus classic 16" **laptop case.** **Black £5.**  
**Leather black briefcase** 17½" x 12½" x 4". **£10 o.n.o.**  
Both in good condition. **01579 362846**

3 ft **Pine Bed** complete with fire-resistant mattress. Excellent condition. Hardly used. Buyer collects. **£30 ono.**  
**01579 362753**

**Half Brogues** black size 10. Cost £140 new; **now £50.**  
Gents classic black **leather jacket** size 46. **£50. 07789 861546**

**Shires Show jacket.** Black with purple Collar. Only been worn a couple of times. Ex. Con. **£25.**  
**01579 343992** or **07810 178802**

**Homedics Back Massager.** Full lumbar or Lower Lumbar only options. Plus variable intensity. Fits any armchair. Can be seen working. Only used twice. Great Xmas present. **£50 ono.**  
**07973 510693** St Ive.

**WANTED to buy,** a small piece of non-development, flat, accessible **land** within 5 miles of St Ive. Any type of land considered.  
**Tel 01579 - 384658.**

## What's on in St Ive Parish ?

WHAT'S ON	WHEN	CONTACT DETAILS
<b>MILLENNIUM HOUSE</b>		
Aikido	Thursday 7:00pm	
Antique & Collectors Fair	4th Sunday Monthly 10:00 - 4:00	
Badminton Club	Mon & Tues 7:30pm. Fr. 8.00pm	01579 363594 (Carol & Nigel)
Book Exchange	Daily	01579 363096
Breath of Air	Monday 12.30pm - 2.30pm	01579 345989 Pauline
Country Dancing	Alternate Thursdays 8.00 - 10.00pm	01579 382402 Ray Buckingham
Fitness Pilates	Monday 9:30 - 10:30am	07850 473428 (Dianne)
Ladies Netball	Friday 09:15 - 10:15am	07985 387472
Pensioners Lunches	Tuesday 12:00 - 2:00pm	01579 363096
Short Mat Bowls	Thursday 7:00pm	01579 208528
Village History Group	Last Monday Monthly 7:30pm	01579 208754 (Angus)
Wildlife Group	Quarterly	01579 362539 ( Hilary)
Woman's Institute	2nd Wed Monthly 7:15pm	01579 363718 (Frances Tucker)
Yoga	Wednesday 7:00pm	01579 344464
Zumba Fitness Classes	Wednesday 7:00 - 8:00pm	01579 363096 (Millennium House)
<b>PENSILVA VILLAGE HALL</b>		
Brownies	Monday 4:00 - 6:00pm	01579 362239 Martha Oliver
Pensilva Wednesday Club	Wednesday 2:30pm	01579 363221 Mrs Jean Conner
Pensilva Snooker Club	Wed 7:00pm + Various times	01579 362091 Phillip Bond
Guides	Thursday 6:00 - 8:00pm	01579 363228 Caroline Hambly
MIMS	Friday 1.00 - 3.00pm	01579 343702 (Chris)
Rainbows	Friday 4:00 - 5:00pm	01579 362091 Lynne Bond
Rangers	For Info	01579 362982 Kirsty Oliver
<b>PENSILVA PRE-SCHOOL</b>		
Pensilva Pre-School	Monday-Fridays 9:00 - 3:15 (session times available)	07890 023924 Mrs Suzanne Kinsman (Manager)
Tiny Tots Toddler group	Friday 9:15 - 11:15am	07890 023924 Mrs Suzanne Kinsman (Manager)



## ST IVE INSTITUTE

Gardening Club	1st Monday monthly 7:30pm	01579 382762
St Ive Snooker Club	Monday & Thursday 7:00pm	01579 382315 R Bunkum
Art & Craft Group	Tuesday 1:00 - 5:00pm	01579 362216 (Jackie)
Post Office	Wednesday 10:30 - 11:30	
Coffee Morning	Wednesday 10:30 - 12:00	
St. Ive Singing Group	Thursday 4.00 - 5:30pm	01579 382341 (Clare)

**St Ive Institute available for hire. £3.50 per hour.** This includes the use of the kitchen & electric (excluding wall heaters which operate on a £1 coin meter)

**Contact Jill Ede 01579 384095**

Hall meetings will now be held bi-monthly on the second Tuesday of the month



## ST IVE & DISTRICT GARDENING ASSOCIATION



Meetings in St Ive Village Hall 1st Monday in the month at 7.30pm

**Monday 4<sup>th</sup> Dec**      **Charlie Pridham**, Maximum effect, Minimum effort, streamlining your garden

**Saturday 6<sup>th</sup> Jan 18** **Annual Lunch** details tbc

**Monday 5<sup>th</sup> Feb**      **Jenny Edrich**, Stinkbombs, Samphire & Squills, wild flowers around Cornwall

*Visitors and new members are always welcome to join us.*



### ART AND CRAFT GROUP

We are a small friendly informal group who enjoy doing art and craft. If you paint or do any type of craftwork and would like to join us we'd love to welcome you.

There is no 'teaching' but help/advice is always forthcoming!

We meet at St. Ive Institute Hall from 1.00pm to 5.00pm Tuesday afternoons.

Only £3.00 for the afternoon plus 50p for tea/coffee and biccies.

If you are interested please give Jackie a call on **01579 362216**.

We look forward to meeting you.

# Pensilva Post Office

Located through the Café on the 1<sup>st</sup> floor of Millennium House



## Opening times:

Tuesday	-	9am to 1pm
Wednesday	-	9am to 12 noon
Friday	-	9am to 12 noon



## **MILLENNIUM HOUSE**

### **THE MEL**

**Licensed Bar  
Free House**

#### **Opening Hours**

Mon - Thu	-	5 pm to 11 pm
Fridays	-	3 pm to 11 pm
Saturday	-	12 noon to 11 pm
Sunday	-	12 noon to 11 pm

Millennium House 01579 363096

