

THE PARISH PUMP



April 2017
Edition 425



The Newsletter for the Parish of St Ives



A big thank you from the WI to everyone who supported our **Marie Curie afternoon tea** at Pensilva Village Hall. We made a wonderful total of £400 and donations are still coming in.

Disclaimer

The articles appearing in this magazine do not necessarily reflect the views of the Parish Council nor of the Parish Pump Editor.

Parish Councillors Telephone List

David Waddington (chair)	01579 362654
Martin Corney	01579 382450
Roger Bennison	01579 363967
Pam Carter	01579 362640
Alan Neal	01579 362478
Stephanie McWilliam (Cornwall Councillor)	01579 362037

Meetings of St Ive Parish Council

2nd Monday monthly: Parish Council Meeting, alternating between St Ive Village Hall and Millennium House (please refer to notice boards for the agenda showing start time and venue each month). Any changes to the regular dates (i.e. Bank Holidays etc.) will be publicised accordingly.

4th Tuesday Monthly: Parish Council Planning Committee Meeting, 7 pm at Millennium House Pensilva, followed by the Parish Council Finance & Administration Committee Meeting commencing at 7.30 in the same venue.

Date of Next Parish Council Meeting:

Monday 10th April 2017 at 7.30pm at Pensilva



Devon & Cornwall Police
Building safer communities together



101

Minicom 18001 101

Police Community Neighbourhood Office 01579 325454 at any time

Your Community Support Officer is PCSO 30271 Linda Phillips.

Contact: linda.phillips@devonandcornwall.pnn.police.uk.

Phone for a chat on 07703 885654. Leave a message & I'll call back when on duty

To report a crime call 101 or go to www.devon-cornwall.police.uk

In an emergency call 999

Contact details for St. Ives Parish Council and for Millennium House

Address for correspondence: Millennium House, Century Square, Pensilva PL14 5NF

General Parish matters should be raised initially with the Parish Clerk (Leesa Childs) who will present them to the Parish Council.

Telephone: 01579 363096, email: stiveparish@btconnect.com

For accounts matters for the Parish and for Millennium House contact John Body, Finance Officer: 01579 363096, email: millenniumhouseadmin@btconnect.com

Millennium House enquiries and reservations: 01579 363096

email: millenniumhouse@btconnect.com.

On the web: Millennium House Website: www.cornwallvenue.com

Parish website: st-ive-parishcouncil.gov.uk Facebook: facebook.com/stiveparishcouncil

Parish Pump Information and Contact Details

To contact the editor please email: parishpump@btconnect.com

or phone the Parish office: **01579 363096**.

Hardcopy submissions by post or by hand to the Parish office, Millennium House.

Softcopy submissions: By email to the editor in MS Word, MS Publisher, pdf, Tiff or jpeg. Please use A4 pages and minimum 16 point font as the Pump is initially produced in A4 size and reduced to an A5 booklet at the printing stage. If in doubt please contact the editor.

Current Advertising Prices including VAT at 20%

Per issue: Quarter Page £7.50 Half Page £15.00 Full Page £25.00

10% discount for 12 months paid in advance.

Bargain Corner free ads by email to the editor or drop off at the Parish Office.

Deadline for the Parish Pump is STRICTLY 15th of every month

THE MEL BAR

**Relax and wind down
at the Mel Bar, Millennium House**



sky SPORTS

From the Editor

My sincere apologies to Pensilva Health Centre for an item in last month's Pump which caused concern among many patients. I urge everybody to read the announcement opposite; welcome reassurance that our popular and successful health centre is not at risk from the Sustainability and Transformation Plan.

An unusual item this month. The middle eight pages of this edition are devoted to the publication of a legal opinion concerning the correct process to be followed if the management of Millennium House is to be transferred to PCA, or to any other third party. The parish council had previously been reluctant to share this legal opinion but it resolved, at its meeting on Monday March 20th, not only to publish it on the council's website, but also to reproduce it in full in the Parish Pump. The decision to make this document public is very welcome. Parishioners are now in a better position to decide for themselves about future options for Millennium House.

It struck me as I was preparing this edition that, apart from the contributions from our churches, there is barely a mention of Easter. So let me try to redress the balance slightly by wishing everybody a very, very happy Easter.

All the best! Joe

Millennium House Opening Hours

Reception

9am till 2.30pm Monday to Friday

Cafe (Angie's Pantry)

9am till 4pm Monday & Wednesday to Friday

9am till 2pm Tuesday

10am till 4pm Saturday

Bar

5pm till 11pm Monday to Thursday

3pm till 11pm Friday

12am till 11pm Saturday and Sunday

If no-one is available please leave a message in our **letter box** at the front of the building or on our answer phone by calling **01579 363096**.

An announcement from Pensilva Health Centre

Practice Announcement

Further to the recent article in the Parish Pump, Pensilva Health Centre would like to reassure all its patients that we are not closing.

Many smaller surgeries are at risk, however Pensilva Health Centre is not one of them. We have been one of the top three fastest growing surgeries in Cornwall over the last few years and our patient numbers continue to rise. We have responded to this by successfully recruiting more doctors, nurses and more support staff to ensure we continue to provide the high quality patient care that we strive for. In this current climate many surgeries are struggling to recruit clinical and support staff, however Pensilva Health Centre's excellent reputation, our strong patient focus ethos and cohesive, motivated team has enabled us to recruit.

We have a community of loyal patients and wish to thank you all for your continued support. We also have great support groups, including The Friends, The Patient Participation Group and all the many groups they have initiated.

We are aware many people have been upset by this article and we wish to reassure you Pensilva Health Centre remains here for you.

The Practice Manager

Pensilva WI March Meeting

Frances Tucker opened the meeting by welcoming two visitors and one new member. Following the reading of the minutes by our Secretary Jean Hoare, Frances went through the County News and highlighted some good opportunities. We were reminded that there was a Village Tidy morning on Saturday 13th May and also a Group Social Meeting on 21st April.

We have several trips arranged. A visit to Kelly's Ice Cream in Bodmin on 17th May. A trip to Cotehele for a game of croquet on 7th June and a visit to TR2 in Plymouth on Tuesday 13th June.

A new innovation for our WI is the setting up of a Facebook page, appropriately called Pensilva WI – please take a look and tell us what you think.

Bob from Trerosa Studios was welcomed as our Speaker. He describes himself as an amateur potter who having tried it at school, liked it and came back to it every few years. Since moving to Pensilva, he has built himself a studio and now enjoys his hobby a great deal.

Bob began his talk by handing out small lumps of clay to members and instructing them on how to make a thumb pot. The members enjoyed this task and made some great looking small pots which they then decorated. Using an electric wheel, Bob then gave us a demonstration of throwing a small pot and we were all very impressed by how easy he made it look. Some of our members then tried their hands at throwing a small pot and enjoyed it a great deal. We were all enthusiastic in showing our thanks to Bob for a very informative and enjoyable talk.

Bob was then invited to judge our competitions. Item of Pottery was won by 1) Liz Clayton 2) Frances Tucker 3) Mary Gilbert

Flower of the month was won by 1) Gill Pascoe 2) Jean Hoare 3) Liz Clayton

Pensilva School Official opening of new pergola



On Wednesday, March 8th, County Councillor Stephanie McWilliams came to officially open the pergola. Despite the dreary weather there were smiles all round.

We have to say a big thank you to the PSA for providing this much-needed shelter from rain and sun. With a special mention for Jill and Jeremy Harris for raising £3000 and to the gardening club for providing all the plants.

The opening was completed by Jill and Jeremy putting the finishing touches to the planting.

LETTER TO THE EDITOR

Please would the owner of the dog fouling the pavement outside no 78 Glen Park, remove it and bin it. It is not only totally irresponsible but against the by-laws.

[Name and email address supplied.]



QUETHIOCK CofE SCHOOL
Quethiock, Liskeard PL14 3SQ
Telephone 01579 343588



Lead Practitioner – Annie Lapham

alapham@stbarnabasmat.com

*We aim 'To bring the world to our children
which will prepare them to go out into the world'*

Quethiock School has had a very busy time, Swallow class have been enjoying Muddy Mondays and have been investigating spring and the children have some frogspawn and are enjoying watching their journey from tadpole to frogs. Swan Class have been learning Spanish as well as performing songs from around the world at the Songfest concert in Torpoint. We also have some great news to share we are really excited to be opening a Pre-School in September for children from 3 years of age. If anyone would like to register their interest then please contact Helen on 01579 343588 or email hnewbitt@stbarnabasmat.com for further details.

The 40th St Ive Village Show

Saturday 2nd September 2017

opens at 2.30pm in the village hall

Entries open to all

**Adult classes for Flower Arranging, Cookery, Vegetables,
Cut flowers, Houseplants, Handicrafts, Photography, Art
and Young people's classes (up to 16yrs)**

Entries to be submitted between 6 pm and 8.30pm on Thursday
31st August, or in advance

Schedules available

by email from Sally at sales@keasonplantservices.com

or from Doreen (383054) or Veronica (382762)

St Ive and District Gardening Association

St Ive Park Project Pancake Event

Many thanks to all who supported this event. We raised £170 for St Ive Park. A very enjoyable morning was had by all. Many pancakes were consumed with all sorts of toppings! The money will go towards maintaining our excellent facilities in St Ive Park.



VOLUNTEERING OPPORTUNITIES NOW TWICE A WEEK meeting every Weds 10am - 2pm and Thurs 12-2.30 p.m. will give us the chance to get ahead with our planting, weeding and digging.

Lunch is provided, plus good company and exercise. All welcome: the more the merrier. We will also be joined by our overseas volunteers who stay for 2-4 weeks and help out in return for food and lodging. We've met people from all around the world this way and made many friends too.

CROPS AND PLANTING it's always a red-letter day when the potatoes go in and this year was no exception. We had decided not to plant any main crop this year but double up on the earlies. All 50kg (Orla and Anoe) have gone in and they were a delight to plant in such magnificent soil, full of worms and humus. Fingers crossed now that we have a fantastic crop. Also planted outside this month are broad beans, parsnips, carrots, beetroot, radish, chard, oriental greens and lettuce. Under cover, we have onions, peas, more broad beans, lettuce, radish and cabbage: peppers, chillies, tomatoes and aubergines are propagating over heat for an early start. It's looking good for another good growing season, weather and pests willing

OUR VEG BOXES this month included our own greens, leeks, salad leaves and PSB, bursting full of freshness. We will hit the 'hungry gap' soon as winter crops end and before summer crops arrive, but we will have plenty of chard and some greens to bridge the gap until we crop courgettes, beans, tomatoes and our usual summer plenty.

To enjoy fabulous fresh local fruit and veg, delivered to your door every Wednesday pm, order your mixed veg box now. Prices: *£7.50 for 1/2 people, £10 for 3/4 people, £15 family box & the very popular £5 fruit bag.*

OUR VEG STALL has two new additions. We have Free Wonky Veg and a 50p box for those items that might have lost their initial bloom but which will still taste good. People seem to be enjoying them and, since we hate food waste, we're delighted. The stall remains popular and we appreciate your custom. Please put your cash in the post-box on the gate.

COMMUNITY COMPOST SCHEME We welcome your lawn clippings, used rabbit bedding, cuttings, etc at our compost bins by the gate. If you use weed-killer on your lawn, please dispose of your clippings through the Council scheme.

The Growing Project CIC is a Community Interest Company producing organic fruit and vegetables. We have opened the growing space at Kenwyn, Higher Rd to the community and welcome volunteers for all sorts of jobs. Contact Ruth Wilson

01579 363684/ 07853 244934 thegrowingproject@orangehome.co.uk

www.thegrowingproject.org.uk

WWW.PENTIDDY.CO.UK 01579 363775



Saturday **8**th April

10am-4pm

Pentiddy Open Day and Bean Pole Fair

Celebrating Sustainability in South East Cornwall

a free event for all the family

Car parking is limited so please walk, cycle or lift where ever possible. If over-flow parking is needed then it will be sign posted on the day, though be aware it may involve an extra 10 minute walk!



Unfortunately some areas of the site are not suitable for wheelchairs or pushchairs but a visit to the house, garden and some of the stalls will still be possible. Please phone for further information.

Pentiddy Woods,
Attwood Lane,
Pensiva, Liskeard
PL14 5QJ

Ruth and Colleen's Monthly

BINGO

At Millennium House

on Tuesday 11th April

Then on May 9th and June 6th

Eyes down at 7:30pm

Over 18's only

£££ CASH PRIZES £££

Pensilva Wednesday Club R.V.S.

Meet in Pensilva Village Hall at 2.30pm on alternate Wednesdays

**ALL ADULTS WELCOME TO JOIN THE WEDNESDAY CLUB
ALL WELCOME ON TRIPS**

12 APRIL	Easter Challenge - Best bonnet, card, picture or flower display - or anything Easter related.
26 April	Annual General Meeting

PENSILVA WILDLIFE GROUP

A G M

Thursday 27th April 2017 7.30pm

Millennium House, Pensilva

NEW MEMBERS WELCOME

The Callington Singers are delighted to announce that they have been awarded a grant by Cornwall Council's 'Community Chest' scheme. We will use the money to fund a singing workshop with proceeds to Callington Heritage Museum. The workshop is designed so that anybody with any singing ability can sing well-known choral works. Non-singers can help by coming to the concert where the workshop participants will perform what they have learnt.

Singing Workshop & Concert

The Greatest Hits of Choral Music

with

The Callington Singers



St Mary's Church, Callington, 29th April 2017

£10 per singer £5 admission to concert

Workshop 11am-5pm. Concert Performance at 5:30 p.m.

To include: Zadok the Priest & Hallelujah Chorus by Handel; Gloria (opening movement) by Vivaldi;
Ave Verum, Laudate Dominum & Lacrimosa by Mozart; In Paradisum & Cantique de Jean Racine by Fauré;
Jerusalem by Parry; Antiphon by Vaughan Williams; Panis Angelicus by Franck; The Heavens are Telling by Haydn;
Abendlied by Rheinberger and Tollite Hostias by Saint-Saëns

All Proceeds to Callington Heritage Museum

To Book: 01579 370323 or contact via our website www.callingtonsingers.org

Musical Director Graham Williams; Accompanist: Mark Smith



Funded by Cornwall Council Community Chest Grant

For an application form and information pack, please use the contact form on our website, or telephone 01579 370323
<https://callingtonsingers.org/> <https://www.facebook.com/CallSingers/>

Pensilva Carnival

Working Group

This year's Carnival week will run from Sunday July 9th to Saturday July 15th. We are asking for volunteers to come forward to help organise events during the week and for Carnival Saturday.

Any community groups interested in putting on events during the week, please contact Karen on 362196. Date of our next meeting: Tuesday 21st March @ 7:30pm in Millennium House. Please come along.



**MILLENNIUM HOUSE
EVENTS GROUP**



Upcoming Quizzes in Millennium House

Next Quiz
Saturday May 6th 2017
at 7:30pm

**Organised by and raising
funds for**

All Being Well

Supporting
children's hospice
SOUTH WEST
Registered Charity No. 1003314



An evening with...

**JOHNNY
COWLING**

ELIOT HOUSE, LISKEARD

FRIDAY 12TH MAY 2017

at 7.30pm

Ticket only event

Contact Pat

£12.50 including Pasty Supper

on 01579 362959

Pensilva Memory Café

Are you caring for someone with Dementia, or do you perhaps have concerns about your own memory? It can be lonely and worrying but you're not on your own. Many people around you are in the same boat. You don't have to feel isolated. More people than ever are becoming dementia aware, and most organisations need, and want, to be dementia friendly.

You may have seen posters for Memory Cafes and wondered what they are about. They are a great place for people with dementia and memory problems to socialise in an informal and friendly atmosphere. Memory Cafes are held in Liskeard, Callington, Launceston, Downterry, Looe, and many more places in the South West. Most are held monthly, some are more frequent.

Pensilva has its own Memory Cafe. It is a small friendly group who meet once a month for tea and cake and a bit of relaxing fun. We might have some music, a simple game or quiz, and a bit of reminiscing. You can join in if you want to, but nothing is compulsory. We hope you will just relax and not worry about anything for a couple of hours. There is no charge but we do appreciate a donation in the region of £1 each towards expenses.

It might be worth coming along to join us just to see what goes on. You might find it beneficial to yourself, or your partner, or a parent, or friend. You might even enjoy it. Why not give it a try? You'd be most welcome. There's nothing to lose.

We meet on the fourth Thursday of each month from 2pm - 4pm. We'd love to see you at St John's Church, next to the Millennium Centre, PL14 5NF.

For more information contact Carolyn or Pat - 01579 363461 or 01579 362698
email carolynandgeoff@gmail.com or patdilworth@hotmail.co.uk

If you are a carer of anyone, of any age or condition (not just dementia), you will benefit enormously from the help of Kernow Carers Service. Freephone 0800 587 8191. Leaflets are available at the cafe.

PENMILL ART GROUP

We are a small, friendly group using all art mediums. If you paint we would love you to join us. We meet at Millennium House
10-2 every Monday.

Please come & see us or phone Pam on
01579 363441.

St Ive Church

Produce Market

Every 1st Friday 10:30 to 1:30pm

Homemade Cakes Fresh Vegetables

Jams Pickles Local made Pasties

Bric-a-brac and much more

also

Home Reared Traditional Meat

Pork, Beef, Chicken, Dry Cured Bacon, Sausages

from

Trehill Farm Produce

Cooked Lunch available from 11:30 only £4.50

Supporting Guiding & Scouting Activities in Pensilva

200 CLUB Draw Results for February

1st No. 168 Ms P Pascoe	2nd No. 117 Ms P Williams	3rd No. 86 Mrs K Snowdon
----------------------------	------------------------------	-----------------------------

Thank you for your support



SEW, KNIT AND NATTER.
WHY NOT JOIN US ON
THE LAST TUESDAY OF EACH MONTH
for sewing, knitting or just for a chat and a
cup of tea or coffee and cake.

We meet at ST JOHN'S CHURCH, PENSILVA from 2pm to 4pm.

Community Lunch

First Sunday of every month 12pm for 12.30pm
3 Course Lunch with Tea and Coffee

Adults £7.95p

Children (*Under 12*) £4.95p

At Millennium House, Pensilva

Bookings required:

**Call Graham or
Charmayne**

on 01579 363096



Pensioners Lunch

2 Course Meal plus Tea or Coffee
Only £5.50

**Every Tuesday here at Millennium House
Speak to our reception or
telephone Graham on 01579 363096**



**So why not join us for Good
Food and Good Company, all
on the day you collect your
pension?**

Badminton?

Come and join our relaxed and friendly group at Pensilva Millennium House

Mon & Tue 7.30 - 9.30pm
Friday 8.00 - 10.00pm

For further info phone
Nigel or Carol on
01579 363594 or
07885 798370

All Being Well

Your local, friendly gym.

Seventeen years working in our local community to improve health, fitness and well being.

Give us a call on **01579 363890** or drop in to see us at Millennium House, Pensilva.

Opening hours:

Mon/Wed/Fri	10.00 to 3.00
and	5.00 to 9.00
Tues/Thur	9.00 to 1.00
Saturday	10.00 to 1.00

MOBILE LIBRARY

The County Mobile Library visits our area once a month on Fridays of "Week 3" (NOTE: not necessarily the 3rd Friday of the month).



**Next visits: April 7,
May 12, June 9, July
7. Stops at the
Victoria Inn,
Pensilva at 10.25 to
10.45am and at
Quethiock Church
11.00 to 11.20am.**

PENSILVA VILLAGE HALL

Anyone wishing to book the hall for meetings, birthday parties or fundraisers please contact Peter or Jackie Browning on **01579 363212** or email **peter@pensilva.freeseve.co.uk**.



Please note that as well as hall rent there is a coin meter for heating at 40p/hr.

We hold a Hall users and committee meeting on the fourth Monday of each month at 7.00pm. Please feel free to come along and support us.

Organisations that meet in Pensilva Village Hall

Meeting Times	Organisation	Contact Person	Telephone
Mon. 4:00 - 6:00	Brownies	Mrs Martha Oliver	01579 362239
Mon. 6:30 - 8:00	Guides	Miss Caroline Hambly	01579 363228
Alternate Wed. 2:30 - 4:00	Wednesday Club	Mrs Jean Conner	01579 363221
Wed. 7:00 & various	Snooker Club	Mr Philip Bond	01579 362091
Fri. 1:00 - 3:00	MIMS (light exercise)	Mike	01579 343702
Fri. 4:00 - 5:00	Rainbows	Mrs Lynne Bond	01579 362091

St Ive Institute & Village Hall

Every Wednesday	10:30am to 12 noon 10:30am to 11:30am	Coffee morning Travelling Post Office
First Monday	7:30pm	St Ive Gardening Club
Every Monday & Thursday	7:00pm	St Ive Snooker Club

PENSILVA HEALTH CENTRE - PATIENT PARTICIPATION GROUP

We are a group of patients who meet regularly with the Health Centre to bring forward for discussion ideas, comments and suggestions about your surgery. In the past we have held open days, helped at the flu clinics and participated in a trial Peoples Commissioning Board Project.

We also organise a Carer's and bereavement group (see below) and a 'Walking for Health' group

(Contact Ann Wood 01579 364085).

You can contact us directly or through the Health Centre.

PENSILVA HEALTH CENTRE CARERS AND BEREAVEMENT GROUP

Are you a carer, bereaved or lonely? Then come along and join our Group. Tea, Coffee and plenty of friendly chat and, when possible, local trips to various venues.

**Meetings are held every third Thursday of each month at 11.30.a.m.
Meet in Millennium House car park.**

For any information please contact Jean Connor 01579 363221

PENSILVA HEALTH CENTRE - Baby Clinic

First Thursday of every month, from 1 to 2pm

A friendly health visitor will be on hand to weigh your baby and give friendly, professional advice.

For information call the health centre on

01579 362249

**NHS
REGISTERED**



**BREATH
OF AIR**

**SUPPORTED BY
LOCAL DOCTORS**

Do you suffer with various long term health conditions?

Come along and join our small, friendly group.
For company, light exercise and support.

We meet at Millennium House every Monday from 1.00pm - 3.00pm

For more information contact us:

Pauline **01579 345989**

Jeanette **01579 363691**



The **co-operative**
Community Fund



Struggling with Sight Loss?

iSight Cornwall offers practical help to people living
with sight loss in Cornwall including:

Low Vision: Advice for low vision aids

Assistive Technology: Advice on products

Benefits Advice: Assistance to claim entitlements

Equipment Demonstration: Advice on gadgets

Social Clubs & Activities: Links to clubs & activities in the county

For more details Telephone 01872 261110 or visit

St Ive Church

Services at 11:15am Every Sunday

- Apr 2nd Holy Communion & 10th anniversary of Church re-opening
- Apr 9th Family Service - *Small pets welcome.*
- Apr 13th Maundy Thursday Service & Supper **7pm**
- Apr 14th Good Friday Hour before the Cross **11am**
- Apr 16th Easter Day Holy Communion
- Apr 23rd Morning Service
- Apr 30th Together at Ten at Quethiock **10am**

Other April Events

- Fri 7th Home Produce and Bric-a-brac with Lunch 10:30-1:00pm
Home made cakes etc, fresh vegetables, locally made pasties, pickles, jams
and much more. Farm-fresh meat from Trehill Farm Produce.
- Sun 16th Lunch in Church 12:45pm All welcome. Only £7 for 2 courses.
- Mon 17th Easter Egg Hunt and Nature Trail 10:30
Lots of Easter Eggs for children to find. Hot dogs & burgers available.

Reverend Margot Davies **01579 208698** email margotaj@tiscali.co.uk

Church Wardens Brian Dwelly **01579 364010** email btdwelly@aol.com

Colin Catchpole **01579 383867** ccatchpole@hotmail.com

Donations for Liskeard Food Bank can be left in the Church each day between 10am & 4pm

Please let the Priest or Churchwarden know of anyone requiring a home or hospital visit.

ST JOHN'S CHURCH, PENSILVA

Services for April 2017

Anglicans and Methodists share services at 11 am each Sunday, coffee served before service

Sunday 2nd	(9.30am	Anglican Benefice Eucharist at St Cleer)
	11 am	Rev Mark Pengelly
Sunday 9th	11 am	Anglican Holy Communion Service
	5pm	Food 4 Thought at St John's Church
Sunday 16th	11 am	EASTER DAY , Rev Becca Ball
Sunday 23rd	11 am	Rev. Mark Pengelly, Holy Communion
Sunday 30th	11 am	United Benefice Service

Maundy Thursday Service 13th April, 7:30pm at St Cleer Church or Liskeard Methodist

Good Friday Service 14th april, 3pm at St John's Church

Afternoon Tea Friday 7th April at 3pm at St John's Church. Bring & Buy, everyone very welcome.

Thursdays 10am at St. John's Church there is a **Café-style Service** followed by coffee and chat. Everyone welcome to join us.

Lent Lunch at St John's, from 12 noon Thursday 6th April. Come along and enjoy home made soup.

Prayer Group: Tuesday 11th and Friday 28th April. Please ring Eileen on 362580 or Carolyn 362698 if you would like prayer for yourself or someone else.

Fellowship Group, 7:30pm at St. John's Church on Friday 7th with John Howard and 21st April with Patrick Clark. Further information from Geoff or Carolyn on 362698.

For further details of the Services held in St John's, if you know of any illness or need in the village or if you would like your wedding or baptism in the church, please contact: Geoff Cox - 362698 or

Frances Tucker - 363718

St Ive Methodist Chapel

Services for April 2017

Sun 2nd Apr	11am	Mrs Barbara Snowling. No evening service.
Sun 9th Apr	11am	Rev Tom Osborne with Communion
	5pm	United 'Food for Thought' at Pensilva
Fri 14th Apr	11am	Good Friday, Hour at the Cross at St Ive Church
Sun 16th Apr	11am	Easter Day - Mr Steve Wherly
		No evening Service
Sun 23rd Apr	11am	Mrs Helen Burke
	6pm	United Service
Sun 30th Apr	11am	Mr Noel Morgan. No evening service.

Lent lunch Friday 7th April at St Ive Church from 12pm

"Village Churches Together" on Tuesday 4th April at 7:30pm at St Ive Methodist Chapel. Please ring Keith on 382334 for details. Everyone welcome.

The Chattermakers Craft Group will meet on Thursday 13th and 27th April in the Guild room from 7:30pm. Anyone wanting more details please contact Kathryn on 01579 382334. All welcome.

The Village Church Prayer meeting will be held in the Guild room on Wednesday 12th and 26th April from 7:30pm. All welcome.

Trerosa Studios

Pottery & Woodturning activities for you to enjoy

Well equipped

All materials provided

Help / tuition from qualified teacher if required

01579 647247 or 07486 089466

Email: bob@trerosacrafts.co.uk www.trerosacrafts.co.uk



8 page pull-out booklet containing:

Legal advice relating to Disposal of Millennium House: High level advice on powers and processes.

The advice was requested by St Ive Parish Council from Stephens and Scown, solicitors, and is reproduced here at the instruction of St Ive Parish Council.

Also available from the Parish Council website:

Go to <http://st-ive-parishcouncil.gov.uk/>

From the Parish Council tab, select Meetings / Parish Council Meetings. The link to the legal opinion is next to the link for the minutes of the EGM held on November 28, 2016.

CONFIDENTIAL

Disposal of Millenium House: High level advice on powers and processes

Further to our previous correspondence in relation to this matter, we now report on the appropriate powers available to the Parish Council.

Executive Summary.

- The offering of a long lease and the provision of a grant to PCA without having undergone any form of valuation or public marketing exercise is extremely likely to be unlawful.
- If the Parish Council wishes to allow a third party to operate Millenium House, it should do so using a transparent and robust process designed to ensure that the Parish Council is obtaining good value for money, complying with all applicable legal requirements, and making a good quality decision.

Project Overview.

It is proposed that the Parish Council offers a long lease (a "Disposal") of Millennium House ("the Property") at nominal rent to a local charitable association, Pensilva Community Association ("PCA"). It is envisaged that PCA will be able to operate the Property in a more cost-effective manner than the Parish Council currently is, however the Parish will make available to Millennium House a substantial part of its precept for use over the next five years. The Parish Council is primarily concerned with ascertaining the precise statutory basis on which the envisaged arrangements will operate, with, in particular, focus on:

- Whether the Parish is legally able to provide these sums from its precept; and
- The Statutory authority that must be relied on for this purpose.

The Parish Council is currently unable to take advantage of the General Power of Competence pursuant to the Localism Act 2011.

The Property is the Parish Council's primary asset and its disposal raises a series of questions not just relating to acting within the Parish Council's powers, but including ensuring that it complies with:

- appropriate procurement and state aid requirements;
- its own standing orders and financial procedures;
- the requirements of its grant funders; and
- the need to ensure that it is making a good quality decision which enhances the wellbeing of the people of the Parish of St Ive.

To identify an appropriate power, it is necessary to consider what the project entails. In essence, the project represents:

1. A disposal of land to PCA; and
2. A grant of funding to PCA to fulfil it.

This note will consider these aspects separately.

Can the Parish Council dispose of the land to PCA?

Disposal of land. LGA S 127.

First and foremost, the Council needs to be comfortable that it has the statutory ability to sell the land. Section 127 of the Local Government Act 1972 (LGA) sets out that a parish council can dispose of land in any manner as they wish, as long as such disposal is at the best value that can reasonably be obtained. Disposals at an undervalue are only permitted with Secretary of State consent, or where:

1. The Parish Council considers that the purpose for which the land is to be disposed is likely to contribute to the achievement of any one or more of:
 - i) the promotion or improvement of economic well-being;
 - ii) the promotion or improvement of social well-being;
 - iii) the promotion or improvement of environmental well-being; and
2. the "undervalue" (i.e. the difference between the unrestricted value of the interest to be disposed of and the consideration accepted) is £2,000,000 or less.

Where the disposal does not achieve these requirements, an application to the Secretary of State for a specific consent is required.

In this case, this process does not seem to have been followed as no valuation has yet been undertaken. If the Property is to be disposed of in situations other than representing best value, the reasons for this are carefully identified; this does not seem to have taken place.

Such a valuation would not only serve to assist the Parish Council in meeting its legal obligations but would assist the Parish Council in ascertaining the strength of its bargaining position with regard to disposal of the Property.

It is assumed that no part of this land is public open space or village green.

Conclusion: It is unlawful for the Parish Council to dispose of the Property a peppercorn rent to PCA unless the formal process in LHA S 127 has been complied with.

Can the Parish Council make an award of grant funding to PCA?

It is understood that PCA will need a grant of at least £57,000 over the next five years in order to run the Property. A number of powers exist in relation to this.

Grant to PCA. LGA S 137.

The Parish Council has the statutory ability to incur expenditure not otherwise authorised on anything which in the council's opinion is in the interests of the area or part of it or all or some of the inhabitants. As the Parish Council will be aware, there are a number of limitations on such expenditure, which:

- must be in the interests of, and bring direct benefit to, the Parish Council's area or any part of it or all or some of its inhabitants;
- must be commensurate with the benefit; and
- is not prohibited or otherwise catered for under any other legislation.

The rules also make clear that Parish Councils may incur expenditure on contributions to any charitable funds or public services. However the amount of expenditure that the Parish Council can incur under this section in any financial year shall not exceed the amount produced by multiplying—

- (a) a prescribed "appropriate" sum, (which for 2016-17 is £7.42); and
- (b) the relevant population of the authority's area.

It is envisaged that the assistance to be provided to PCA would exceed these levels. It is therefore suggested that alternative justification is sought. In any event, this power would need to be carefully exercised in a way which did not conflict with any other legal requirements imposed on the Parish Council.

Provision of community centres. LGA 1972 S 133.

This power gives the Parish Council the ability to acquire or provide and furnish buildings to be used for public meetings and assemblies or contribute towards the expenses incurred by any any other person in acquiring or providing and furnishing such a building.

This would appear to be a useful power for the Parish Council; however the power to provide the community centre would need to be carefully exercised in a way which did not conflict with any other legal requirements imposed on the Parish Council.

Recreational Facilities: S 19 Local Government (Miscellaneous Provisions) Act 1976

A local authority may provide, inside or outside its area, such recreational facilities as it thinks fit; the A local authority may contribute, by way of grant or loan towards the expenses incurred or to be incurred by any voluntary organisation in providing any recreational facilities which the authority has power to provide. "Voluntary organisation" means any person carrying on or proposing to carry on an undertaking otherwise than for profit.

It is understood that businesses occupy the Property on the basis that they are operating commercial businesses; Further, one of the primary functions of the building is as the Parish hall. It therefore seems unlikely that a grant which supported such businesses could be said to be "recreational facilities". Funding could be provided to support elements of the Property that were purely recreational, however care would need to be taken to ensure that the non-recreational elements were not subsidised.

Are there any other powers that may exist?

Subsidiary Powers. LGA 1972 S111

This gives the Parish Council a broad power to do what is necessary for the advancement (whether or not involving the expenditure, borrowing or lending of money or the acquisition or disposal of any property or rights) which is calculated to facilitate, or is conducive or incidental to, the discharge of any of their functions.

Although arguments could be made that this section allows the Parish Council to enter into contracts and incur expenditure to dispose of the centre, it will not prevent the requirement to comply with any other functions and would not allow the Parish Council to circumvent the measures set out elsewhere in this note. It is accordingly of limited value.

Are there any other issues that may prevent the Parish Council lawfully disposing of the land to PCA?

State Aid.

If the occupier is being given an opportunity to use the site in a way which gives it a competitive advantage over its competitors, (For instance it acquires the site on less than

market value) it may be in receipt of unlawful State Aid. However if it can be demonstrated that the occupier is using the Property on market rates, there will be no grant of State Aid. It will be necessary to keep the proposed arrangements under review as the matter progresses to ensure that any potential State Aid is identified. There are a number of ways in which Property can be transferred at an undervalue without representing State Aid, and if it appears that State Aid is present, it will be necessary to consider whether any of these apply.

Public Procurement.

If, under the agreement that the Parish Council is entering into with the occupier, the occupier will be providing a service to the Parish Council, (Which might, for example, include the provision of management services in relation to the Property) it will be necessary to ensure that those arrangements are procured in a way that complies with the Parish Council's standing orders, or if the value of the services is big enough, the full Public Procurement Regime.

Grant Funding.

It is understood that the Property has benefitted from substantial capital grant investment. It is proposed that the requirements of the grant funding agreement that the Parish Council entered into are checked to ensure that the Property can be disposed of. Depending on what the terms say, it may be necessary to obtain permission from the grant funder before the Property is disposed of.

Public Law.

The Parish Council is obliged to ensure that any decision it takes is reasonable. Unreasonable decisions may be challenged by way of Judicial Review.

Conclusion: It is understood that PCA will need a grant of at least £57,000 over the next five years in order to run the Property.

The power under Section 19 of the Local Government (Miscellaneous Provisions) Act 1976 would appear to be a suitable power as it allows the Parish Council to fund the costs of providing such a building. However The Parish Council has not, at this stage, made any independent assessment of whether this represents good value. Until this has been done, it is difficult to see a decision to award such funding, without looking at the wider potential uses of the building or the other solutions available, could be deemed to be "reasonable".

Is the PCA proposal lawful?

The PCA proposal.

On the information provided, the acceptance of the PCA proposal in its current form is extremely likely to be unlawful for a number of reasons.

1. The Parish Council is not able to demonstrate that the price it is receiving (i.e. a nominal sum) is the best that can reasonably be obtained;
2. The Parish Council does not have the ability to make a grant to the extent necessary;
3. The disposal of the Property at a nominal value and the grant funding could, potentially, represent a grant of unlawful State Aid;

4. The imposition of contractual arrangements on PCA could, potentially, represent the grant of a Public Service Contract otherwise than in accordance with the Public Procurement regime or the Parish Council's standing orders or financial procedure rules;
5. In transferring the Property to PCA without considering any of the alternatives, the Parish Council may struggle to show that their decision had been reasonable (ie took into account all factors which a reasonable person would have taken into account) and therefore be potentially subject to Judicial Review.

From a non- legal perspective, it is also difficult to see how offering the property to PCA is a decision that would demonstrate to the residents of St Ive that the Parish Council was making a good quality decision and effectively using the site.

How can the Parish Council lawfully achieve its aims?

Disposing of the Property.

In relation to the disposal of the Property, In order to demonstrate that the disposal of the Property accords with all applicable legal requirements and obtain demonstrably best value, it is strongly suggested that the Parish Council undertakes a fair and transparent process whereby the site is offered to the wider community in order to ascertain the best possible options for the site rather than simply given to PCA. The process should comply with the strict requirements of S 127 PCA.

Making a payment for the upkeep of the Property (at least in the short term).

In relation to the Parish Council's ability to provide grant funding to the occupier of the Property in order to contribute to running costs, it seems to us that what the Council is doing is properly incurring costs necessary for the up keep of the community centre. If the Parish Council undertakes the valuation process as set out above and opens up the opportunity to operate the Property to the wider community, it will be able to demonstrate that it is achieving good value. (It may be the case that having gone through this process, the occupier may not need a subsidy- and potentially may even be able to pay rent to the Parish Council.)

Indicative process.

Once the Parish Council is content that the current arrangements cannot be sustained and that there are no viable alternative arrangements under which it can be retained, it would need to devise a process for offering the Property to the wider market. Such a process would be likely to include the following measures:

1. The Parish Council checks that the Grant Funding agreement allows the disposal of the Property.
2. The Parish Council decides exactly what it wants for the Property by preparing a specification of the attributes that the Property (and its occupier) must have, following exchange; which (for example) might include the following:
 - a. That the Property will remain the parish hall and will need to be made available for parish meetings and business on set times and dates;
 - b. That the site will still need to be available for community business and cannot simply be redeveloped;

- c. That the occupier has sufficient skills and expertise to operate the organisation; (i.e. knowledge of information security, record keeping, safeguarding and the other matters that you would expect someone fulfilling this role to have);
 - d. That the occupier will have a suitable business plan in place to enable it to properly administer the Property;
 - e. That the occupier is sufficiently robust from a financial perspective to be entrusted with a significant public asset and finances;
 - f. Any other aspects that you deem to be appropriate; We note that a risk assessment has been prepared which identifies a number of the risks that will need to be addressed and some of these could potentially be mitigated at this stage.
3. Undertake a valuation of the site which complies with the applicable legal requirements;
4. Market the Property to the public, inviting organisations to come forward with a proposal for how they will operate the Property in a way which is sustainable and meets the Parish Council's needs in the longer term; Such a process would be designed to:
 - a. Ensure compliance with the Public Procurement Regime (if necessary) and the requirements of LGA S 127;
 - b. Test the solutions that potential occupiers propose against your specification.

This will enable the Parish Council to identify which bidder submitted the best proposals in terms of value and quality. If the PCA decides to bid to become the occupier, the Parish Council will have the opportunity to test how well it is able to perform the brief that the Parish Council has set.

The successful bidder would then lease the Property from the Parish Council. Depending on the Parish Council's identified needs, it may also enter into a service contract. These documents would govern the relationship between the Parish Council and the Occupier.

Assuming this process is properly structured, the Parish Council will be able to comply with the regulatory issues referred to at (1) above, in terms of:

- Complying with the requirements of LGA S127;
- Complying with the Public Procurement Regime;
- Complying with the State Aid regime;
- Not inadvertently breaching LGA S139;

and also demonstrate that it has made a really good quality decision in relation to the main asset of the Parish Council.

Referendum.

It has been suggested that the Parish Council holds a referendum to decide the future of the site. It is entirely within the Parish Council's rights to undertake a consultation exercise and it will be another step that the Parish Council can take to show that they have made a really good quality decision. It is, however, worth carefully considering what it is the Parish Council wants to consult on. This could be, for example, the principle of whether the Property should be disposed of in the first place; or it could be to identify the particular longer term priorities for the site; i.e. whether it is important to have a site available in the community any more or whether it should be developed in an alternative manner.

The Parish Council will need to ensure that the consultation is fair, and that it is undertaken at a stage in the process when the project is still at its formulative stages; and sufficient information must be given to consultees to ensure that an intelligent response is forthcoming. Finally, the Parish Council should not necessarily be bound to follow the outcome of the consultation, but give conscientious consideration to the outcomes of the consultation in developing its plans.

It is also worth thinking about whether, in a relatively small area, a formal referendum is the best way forward; or whether something relatively simple, taking the form of (for example) a public meeting followed an opportunity for attendees to leave their thoughts on a piece of paper may be more appropriate.

Next Steps.

We hope that this advice is of assistance; We appreciate that this is a fairly high- level view of the matters to be borne in mind however if we can be of any further assistance, please do not hesitate to contact us.

We would be happy to discuss further; for example if you wish us to review the grant funding agreement, or work with the Clerk to further develop the process, we would be delighted to assist.

Please note that this advice has been provided for the benefit of St Ive Parish Council only and not for the benefit of any other third party.

Stephens Scown LLP

16 January 2017

KEEP IT TIDY

General Property Maintenance
including Decorating, plus Electrical



HONEST PRICE
for
QUALITY WORK.



No Job Too Small

Kit Rickard

18 Higher Glen Park
Pensilva

Phone: 01579 363378

Mobile: 07855 699071

Email: KITKeepItTidy@hotmail.com



GROOM
WITH A VIEW

**Offering a Caring
& Experienced
Dog Grooming Service**

City and Guilds Qualified

Telephone **01579 326652**

Email

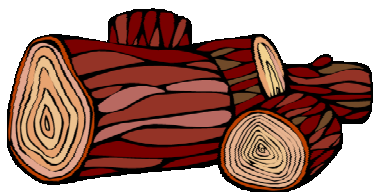
groomwithaview@btinternet.com



Find us on
Facebook

Minutes from Golitha Falls & Siblyback

SEASONED LOGS



MIXED LOAD
or
HARDWOOD

Tel Jonathan

Mobile 07966 070725

or
01579 363157

Also tree/hedge work
undertaken

DAVID HEWETT GARDEN SERVICES



Lawn mowing, grass cutting,
strimming, hedge cutting,
general garden maintenance

20 years' experience

Fully insured

01579 363796

PENHARGET FARM B&B

PENSILVA



TEL: JULIE ON 01579 362221

www.penharget-farm-cornwall.co.uk

penhargetfarm@gmail.com



D.J.A. BUILDING SERVICES

ALL ASPECTS OF PROPERTY
MAINTENANCE
BUILDING & REFURBISHMENT

- * Bespoke Furniture and Kitchens
- * Wardrobes and Bookcases
- * Garden Sheds, Poultry Houses & Small Animal Shelters
- * Over 30 years' experience
- * Fully insured * References available
- * Free estimates * No VAT

Call David

**01579 364050 /
07767662635**



KV Accounting Solutions

Guide to automatic enrolment

Information for Employers

The law on workplace pensions has changed. Under the Pensions Act 2008, every employer in the UK must put certain staff into a pension scheme and contribute towards it. This is called 'automatic enrolment'.

Whether you're a hairdresser, an architect or employ a personal care assistant, if you employ at least one person you are an employer and you have certain legal duties.

For your FREE Guide to Auto enrolment and what it could mean for your business contact us.

Email

Katevaughnley@gmail.com

Tel

01579 364083 / 07725004152

www.kvaccountingsolutions.co.uk



automatic
enrolment



Avalennek, Caradon Town,
Upton Cross, Liskeard
Cornwall PL14 5AR
Telephone 01579 363598
Mobile 07901 538132
chrisrounsevell@tiscali.co.uk

HOG ROAST EQUIPMENT HIRE AND MEAT SUPPLY

Hog Roasts For Those Special Occasions
Self Catering or Hassle Free Service
Everything done to your special requirements

CHRIS ROUNSEVELL
TRADITIONAL BUTCHER

Save Costly Energy!



Windows &
Conservatories Ltd

**'A' Rated WINDOWS & DOORS
at BEST PRICES EVER!**



Professionally fitted and finished by us with a
10 year ins. guarantee.
In all colours

FENSA
REGISTERED

NEW

**FACTORY SHOP
SUPPLY ONLY**

For all your windows, doors, conservatories,
fascia, trims, guttering and sealants

**7-10 DAY TURN AROUND ON WINDOWS,
DOORS and CONSERVATORIES**

TEL: 01579 343425

FAX: 01579 344500

WEBSITE: www.solartecwindows.co.uk

EMAIL: sales@solartecwindows.co.uk

KEEPING JOBS IN CORNWALL



D. Hall

Painter & Decorator

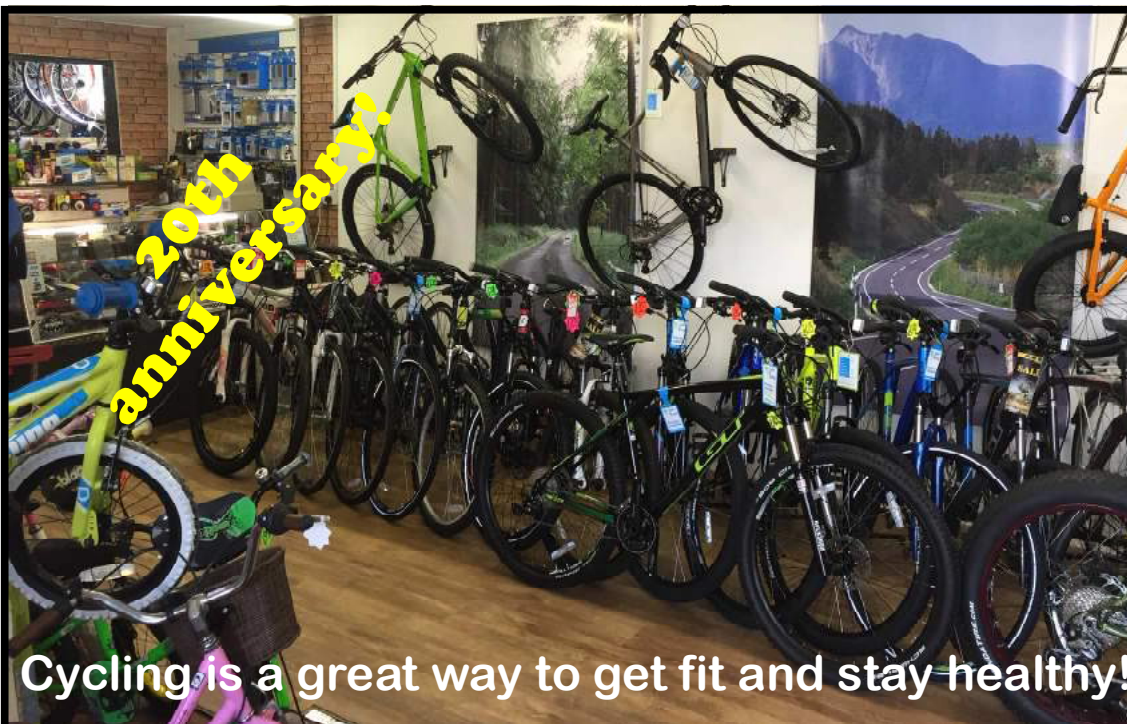
Interior & Exterior Painting
Kitchens & Bathrooms
Wall & Floor Tiling
Covering all General
Household Maintenance



Derek Hall

Mobile: 07974 066 292

Tel: 01579 362 783



Cycling is a great way to get fit and stay healthy!

Great range of bikes always in stock!
 Expert repairs with quick turnaround!
 Reasonable prices!
 0% Finance available on new bikes!
 Professional, friendly advice!

Liskeard Cycles Pig Meadow Lane, Liskeard.

Proprietor: Russell Hall www.liskeardcycles.co.uk

Tel: 01579 347696 email: liskeardcycles@gmail.com

SCOTT BERRIDGE

Complete Property Refurbishment & Building Maintenance

INTERNAL & EXTERNAL DECORATING
 PAPER HANGING • TILING SPECIALISTS
 PLASTERING • PLUMBING • CARPENTRY
 FENCING • DECKING • PATIOS

- Local Pensilva • 25 years experience in Cornwall.
- Proper job • Clean & Tidy • Good references
- Trustworthy • Excellent prices. • Free estimates.

scottberridge@me.com

07889 218 710 (Daytime) 01579 362 006 (evenings)



Computer Tamer

Home help

for all your Computing needs.

01579 320547 t.bedden@btinternet.com

Down to earth, jargon-free tuition, advice,
repairs, troubleshooting, upgrades & installation.

Puzzled by email setup, anti virus, backing up
photos or any other aspect of using your machine?

Need that computer set up or repaired?

Need a website designed or updated?

For all this and more call Tony for a free chat
about your needs. I can visit you at your home. A
reasonable hourly rate with a 1 hour minimum to
cover travel costs. Talk to you soon.

Window Cleaner Window Cleaner

Also any upvc cleaned

i.e. fascias, gutters, etc.

gutters cleared & unblocked

Please phone Rob

01579 384435

07990 996886

Window Cleaner Window Cleaner

PJR Garden Services

Phil Rule

All aspects of garden
work - grass / hedge
cutting, patios, fencing
etc.

Mobile:

07551 969241



Toe Nail Cutting Service

Home visits £15

Michelle Molloy

Foot Health Practitioner

Tel: 0751 030 0875

**Friendly, Professional Service
Fully Qualified and Insured**

OPEN FOR RETAIL, TRADE & COMMERCIAL ENQUIRIES

CORNWALL TILE CENTRE

www.cornwalltile.com

tile**italia**

The **Natural**
TILE & STONE COMPANY

BESPOKE
TILE IMPORTS



Tiles & Stone for:

- ◆ Bathrooms & Kitchens
- ◆ Living Areas
- ◆ Conservatories
- ◆ Patios & External Areas
- ◆ Wet Rooms & Spas
- ◆ Swimming Pools
- ◆ All Commercial Applications

- ◆ Local & National Delivery Service
- ◆ Sample Loan Service
- ◆ Free Quotations
- ◆ Free Design Ideas & Planning Advice
- ◆ Trade Enquiries Welcome
- ◆ Wet Room Specialist
- ◆ Full Range of Adhesives & Grouts

Pensilva Showroom

Open Mon - Thurs 8.30am - 5pm
Friday 8.30am - 3pm
Saturday 9.00am - 1pm

Wadebridge Showroom

Open Mon - Fri 9am - 5pm
Sat 10am - 3pm



**01579
362264**

DISCOUNT TO ALL PUMP READERS



Affordable Counselling

**Caring, confidential,
non-judgemental**

- Increased confidence and self esteem
- Help to cope better at difficult times
- Improved relationships
- Clarify confused thoughts & feelings
- Assertiveness
- Personal insight
- Improved emotional health
- Available for youth and adults

**Isabelle McGarahan BA, PGCE
Dip in Therapeutic Counselling,
Member of ACC, DBS cleared
www.im-counselling.org email:
isabelle@im-counselling.org
01579 344090/07857326229**

PROBLEM?

Folks coming to visit? No space to put them up?

SOLUTION!

Book them into “**The Birches**”, purpose built holiday bungalow, just two miles from Pensilva.

Sleeps 6: fully equipped: linen & towels provided : dogs welcome: free WiFi.



Call Vanessa on **01579 362377**.
10% off tariff with this ad!

Jason Sobey

Plumber and

HETAS stove installer

- * **Supplier of new & used woodburning stoves & Rayburns.**
- * **Oftec registered to supply & install oil boilers / Heritage cookers.**
- * **Anything plumbing!!**
- * **Tiling, plastering**

**CALL: 01503 220901
or visit our website
www.jasonsobey.plumbing**



NICOLA GREENE

BSc (hons) Podiatry MChs

HPC Registered Chiropodist/Podiatrist

**Home Visit Practice treating all
your foot care needs:**

- Nail Cutting
- Corns and Calluses
- Thickened Nails
- Dry Cracked Skin
- Verrucae
- Foot Pain
- Diabetic Foot Assessments
- Wound Care

T: 01579 590027

T: 01752 291565

M: 07786164205

E: nicki_greene@yahoo.com

Group Travel

Enterprise Park, Midway Road, Bodmin
Cornwall PL31 2FQ. Tel: 01208 77989



BODMIN M.O.T. CENTRE at Group Travel

Class 4,5 and 7. Trade enquiries available upon request. 01208 77989



2017 COACH EXCURSIONS

6th MAY - BADMINTON HORSE TRIALS
16th MAY - TAMAR CRUISE & MOUNT EDGCUMBE
29th MAY - EASTBOURNE (5 days, 4 nights)
15th JUN - DART CRUISE & STEAM TRAIN
8th JUL - BARBURY CASTLE TRIALS
25th JUL - MYSTERY TOUR

8th AUG - PAIGNTON ZOO
9th AUG - FIREWORK CHAMPIONSHIPS
18th AUG - ROSEMOOR GARDEN SHOW
15th - 17th SEP - BLENHEIM HORSE TRIALS
4th NOV - BRIDGWATER CARNIVAL
PLUS MORE TO BE ADDED.

16 TO 70 SEAT COACHES AVAILABLE FOR PRIVATE HIRE

CORPORATE/VIP, EVENTS & CONFERENCES, WEDDINGS (CAN INCLUDE STAG & HEN PARTY PACKAGE), HOLIDAY TRANSFERS, FUNERALS, DAYS OUT, GROUP TOURS, SPORTING EVENTS & GOLFING HOLIDAYS.

FOR BOOKINGS AND A BROCHURE PLEASE CALL
01208 77989 / 01208 72669

Website: grouptravelcoachhire.com Email: benneymoon@btinternet.com

**INDEPENDENT
FAMILY
FUNERAL
DIRECTORS**



Undertaking your individual
needs with efficiency,
compassion and care...

Perfect Choice Prepayment
Funeral Plans from £3189.00

(Prices correct as at 01.01.2017)

01579 362358





The RACEHORSE INN



Gastro Pub

Head Chef Phillip Bradshaw

Ray and Flori welcome you to
the Racehorse INN

A fine food experience in a convivial
atmosphere

Our superb Sunday lunch is one to be tried

Open Every Day for Lunch and Dinner

info@racehorseinn.co.uk
www.racehorseinn.co.uk

Take-out: Pizzas & Fish'n'Chips now available



North Hill Village, Cornwall, PL15 7PG

01566 786 916

The Pasty Boys

Unit B, Pensilva industrial estate
St Ive Road, Pensilva PL14 4RE

**Traditional Cornish
Pasties, Pies and
Sausage Rolls**

Frozen pasties available to order.

Shop now open 10-2 Monday to Saturday

07437 600605

benlangton@thepastyboys.co.uk

MARK FITCH CHIMNEY SWEEP

- * BRUSH & VACUUM
- * CLEAN, RELIABLE SERVICE
- * COVERING ALL S.E. CORNWALL
- * DISCOUNT FOR MULTIPLE CHIMNEYS
- * COWLS & GUARDS FITTED
- * STOVES SERVICED



*Call
Mark on:*

01579 350762
07773 462643



Caradon Gas Services Limited

Service Agents for Intergas and ATAG heating range of boilers



www.intergasheaters.co.uk



www.atagheating.co.uk

Barry Matthews Eng Tech MIGEM

Homeleigh, Crow's Nest, Liskeard

Cornwall PL14 5JT

01579 342934

J. H. Simmons

Painting & Decorating



Interior
&
Exterior



No Job Too Small

References Available

For more information
Please call John
01579 362688

7 East Park, Pensilva



FERN LODGE

Boarding Kennels & Cattery

- Fully insured and licensed
- Individual care and attention
- All diets cared for
- Early morning walks, late evening Strolls & plenty of playtime
- Quiet rural setting
- Dog Training
- Knowledgeable & friendly staff
- Collection & delivery service.



Come and visit our on site pet shop
Vast variety of Dog and Cat food
Top names all at competitive prices.
FREE delivery service inside the parish!

Tel: 01579 363030
Golberdon Road, Pensilva

Westwood Garden Maintenance



Antony Watts

Grass Cutting, Clearance

Weeding, Turfing

Hedge Cutting

Patio Cleaning, Planting

Regular Visits / One-off Contracts

Residential & Commercial

FREE ESTIMATES

01579 362019 www.westwoodgm.co.uk 07952 094472

Martin Hoare – Local, Reliable, Competitive



WHEEL DIGGER FOR HIRE
ALSO AVAILABLE 'BREAKER'
AND NEW CONCRETE
'CRUSHER BUCKET'

ALL AT COMPETITIVE RATES

GROUND WORKS
DRAINAGE
NEW DRIVEWAYS
SEPTIC TANKS &
'SOAK AWAYS' INSTALLED



LASER LEVEL FOR HIRE
QUOTES AVAILABLE



Phone 01579 363517

or

Mob 07863 291213



Steve West Aerial Services



Installations / Repairs to
TV Aerials, Satellite Dishes
and Radio

Customised to your requirements

Wireless network &
Mobile phone extensions

TV mounting on walls
Help setting up systems
and demonstrating.

Phone 01726 212761

Mobile 07941 606 183

e-mail stevewestaerials@uwclub.net

CORNWALL PET SERVICES

HOME BOARDING FOR DOGS
DOG WALKING
HOME VISITS

Situation: Between Liskeard and Callington

- Home Boarding for Dogs – safe home environment, off-road walking
- House calls to suit your family pets
- Dog walking
- Fully insured
- Police Checked

Chris Day
Birchill
Quethiock
Liskeard Cornwall
PL14 3SQ
Tel 01579 340438

Email – cornwallpetservices@gmail.com
www.cornwallpetservices.wix.com



Experts in wood, trust us we're good

Decking
Fencing
Flooring inc. Oak
Plywoods + Hardwoods
Construction graded timber
Cladding inc. cedar

Large car park
Full certification FSC/PEFC
Retail Shop
Clinton Gates
Local friendly team
Large stock displayed



Buy online at
www.bondtimber.co.uk
or call 01503 240 308

Use this discount code for
all orders: S9347775

Orders can be collected or
delivered



Bake Sawmill, Trevelfoot, Saltash, Cornwall, PL12 5BW

DOG GROOMING

40 YEARS EXPERIENCE



**SMALL and MEDIUM Dogs
Groomed to Your Request**

**LISKEARD AREA
Inquiries Welcome**

**Call Patricia: 07517 658862
TO YOU OR TO ME**



Domestic Electrical
Property Maintenance
Interior & Exterior Work
Carpentry :: Decking
Kitchens :: Bathrooms
Wall & Floor Tiling
General Plumbing

MCCARTHY PROPERTY MAINTENANCE

**Electrical Safety
Register** incorporating
ELECSA  ECA
Certification Ltd

**HIGHLY REGARDED LOCAL BUILDER
COMPETITIVELY PRICED
COVERING THE SOUTH WEST**

Contact Dominic

07968 599 675

01579 362 945

info@mccarthypropertymaintenance.co.uk

www.mccarthypropertymaintenance.co.uk

VISIT CALLINGTON

A Fair Trade Town

**Whether you need white goods or carpets for your home,
or need to mark a special occasion, with a gift or card,
you can find it in Callington. From a light bite in a tea room or
Cornish Pasties to take away to dinner in a restaurant.**

From antiques and curios, bicycles and D.I.Y. to bridal wear.

A great choice of independent specialist shops.

There is so much more - Visit to see for yourself

Callington Traders Association



**SHOP LOCAL
AND KEEP CALM**



Pensilva Stores

Amazing Value

Premier
a great deal more from your local store
Mon-Sat. 7:00 AM. – 9:30 PM.
Sunday 8:00 AM. – 9:30 PM.

- ✓ Fantastic Special Offers every month!!! (See store leaflets)
- ✓ Come and Check out our great deals on Wine, Beer and Spirits
- ✓ Local Produce: Homemade Butter and Clotted Cream, Meat from our local butcher
- ✓ Cornish Fresh Fruit and Vegetables
- ✓ Fresh Bread, Pasties and Cakes
- ✓ Take Away Coffee, tea and hot chocolate
- ✓ Newspapers and Magazines, Greeting Cards
- ✓ Paypoint, Lottery

*** Free to use ATM ***

*** Card Payment ***

Friendly Staff + Service with a Smile !!!

Pensilva Stores is a family run business who have been serving local people and visitors for more than 21 years.

Higher Road, Pensilva, Liskeard, Cornwall PL14 5NQ

Tel: 01579 362547

MENDOLOGY

Garage Door Specialist

- ☐ Repairs
- ☐ Servicing
- ☐ Installations

Out of hours service
call Dave anytime 07974 442645


MENDOLOGY DOORS

www.mendologydoors.co.uk

01579 363760

PensilvaCars

01579 363516

- ✓ MOTs Class 4
- ✓ Service
- ✓ Repair
- ✓ Tyres
- ✓ FREE Courtesy Car
- ✓ Car & Van Sales
- ✓ Diagnostics
- ✓ Air Conditioning
- ✓ 

We have offered a supply, fit & balance of tyre service for 10 years at competitive prices.

Most of our tyres can be supplied the same day.

LOCAL RECOVERY £45.00

www.pensilvacars.co.uk

pensilvacars@hotmail.co.uk

We can service and repair your car to manufacturer specification, keeping your dealer warranty without main dealer expense.





KEITH RICHARDS

Motor Body Repair Specialists

A family run business with fully equipped & maintained workshops & a focus on
Customer Care

- ♦ **Motor Body Repair Specialist**
- ♦ **Mechanical Repairs**
- ♦ **Servicing to All Makes & Models**
- ♦ **Computer 4 Wheel Alignment**
- ♦ **24 Hour Recovery Service**
- ♦ **Renovations & Re-sprays**
- ♦ **Member of RMI (Retail Motor Industry Federation)**
- ♦ **Latest Diagnostics (including specialists for VW, Audi, Seat, Skoda & Vauxhall)**

With over 30 years' experience we aim to provide you with:- Value for Money -
Friendly Service - Professional Approach - Expert Advice that you Can Trust
(Visit our website for more details)

Pensilva Industrial Estate, St Ive Road, Pensilva, Liskeard, Cornwall PL14 5RE

Tel: 01579 362593

Email: keith@keithrichardsmotorbody.co.uk

Fax: 01579 363194

Website: www.keithrichardsmotorbody.co.uk

Wm. Newham & Sons Est. 1835

Proprietor Robbie Savill AWCB

CHIMNEY SWEEPS & BLACKSMITHS



CHIMNEY SWEEPING

BIRD GUARDS, COWLS & POTS FITTED

CCTV INSPECTIONS & SURVEYS

STACK REPAIRS & REBUILDS

RIGID STEEL SYSTEMS ERECTED

**STAINLESS STEEL and PUMPED CONCRETE
CHIMNEY LINING**

STOVES SUPPLIED, INSTALLED & REPAIRED

FIREPLACE ALTERATIONS & RENOVATIONS

**FULL RANGE OF FIREPLACE FURNITURE
made to order**

01579 347777

**need somewhere to stay ?
between homes ?
family/friends visiting ?**



**ideal for Pensilva
& St.Ive**

**please call Jackie on
01579 362216**

J.J.CHILD

PLUMBING AND HEATING ENGINEER

OIL AND GAS APPLIANCE

SERVICE , REPAIR AND BREAKDOWNS

LANDLORD'S CERTIFICATES

OVER 25 YEARS EXPERIENCE

CALL JOHN ON 01579 362336

MOBILE 07837921086



502322

Bargain Corner Free Ads up to £50

Ads are free for items up to £50. £5 charge for items over £50. Please ring the Parish Office on **01579 363096** or leave a note at Millennium House reception or email **parishpump@btconnect.com**.

*****Please let us know when your item has sold*****

Caravan items for sale.

Wastemaster. **£20**

Aquaroll. **£20**

Single aluminium caravan step. **£10**

Towing mirrors (screw on). **£20**

Milenco Hitchlock **£20**

Milenco Wheel lock **£30**

01579 362334.

17" TFT LCD flat **display monitor** with separate 19" unpacked frameless LCD eye protector. Both items for **£50.00 ono**.
Vintage Stationary Engine **Starting Handle**, to fit over a $\frac{3}{4}$ " drive shaft. $4\frac{3}{4}$ " long grip/handle, $5\frac{3}{4}$ " arm, $1\frac{1}{2}$ " insert, in green. **£25.00**

Collector's item, Salter 9" dia, solid brass faced hanging **scales**, made in England. Will weigh up to 200 lb. **£25.00**

01579 384658

Samsung 19" **TV**. Excellent condition. Freeview. With stand. **£50**.

Round, wooden, **drop leaf table** in excellent condition. **£20**

01579 362922

Dremel Moto Saw. As new condition **scroll saw/fret saw**. Ideal for hobbyists. Own, plastic carry case but is missing vacuum cleaner adapter & instruction booklet. Instructions available on line. **£50.00**

James Ultra 7000 Ultrasonic **cleaner for jewellery** and other items. Very good condition. Instructions available on line. **£20.00**

01579 362207 (Pensilva)

Vintage **display cabinet**, colour Tan. **£25**
Solar Tiffany 10 lamps 3 lampposts **£35**
Soda stream, just tested, unused. **£19**
Phone/text **07855 016596** Pensilva area

3 ft **Pine Bed** complete with fire-resistant mattress. Excellent condition. Hardly used. Buyer collects. **£30 ono**.
01579 362753

Brand new tyre. Goodyear 205/55R16 on alloy wheel. Kept as spare tyre for Touran, never used. Selling due to change of car. Now **£20**. **01579 641431**. **St Ive**

Samsung CLX3185 Colour Multi-Function **Laser Printer/Scanner/Copier** including 4 New Boxed Toner Cartridges. Hardly ever used. **£50**
Handy small Impact **Garden Shredder**
As new **£40**

Tel : 07891 849603

3 piece suite. Two-seater sofa plus two chairs. **£50**.

01579 363712

Printer Canon Pixma MG315D. Black colour, Exc condition. **£40 - 01579 362473**

White wooden double bed frame 'Avignon' range from house of home **£50 ono** reason for sale - moving
White $\frac{3}{4}$ size dishwasher, Bosch, good working order **£50 ono**
07724 111132

Tiger rug 31" x 58" - £5
Small jug kettle - £1
Paper shredder - £5
01579 362034

Samsung **computer monitor** 21 inch. 4 months old. Analog. **£45. 01579 362417**

Half Brogues black size 10. Cost £140 new; **now £50.**
Gents classic black **leather jacket** size 46. **£50.**
07789 861546

Modern steel frame **single beds** (pair). Aluminium effect. Complete with new memory foam mattresses. **£50 each.**
01579 362293

Shires Show jacket. Black with purple Collar. Only been worn a couple of times. Ex. Con. **£25.**
01579 343992 or 07810 178802

Wicker, glass top **coffee table** with shelf. L 39", W 27", H 19". VGC. Buyer collects. **£30. 01579 347474**

Homedics Back Massager. Full lumbar or Lower Lumbar only options. Plus variable intensity. Fits any armchair. Can be seen working. Only used twice. Great Xmas present. **£50 ono.**
07973 510693 St Ive.

WANTED to buy, a small piece of non-development, flat, accessible **land** within 5 miles of St Ive. Any type of land considered.
Tel 01579 - 384658.

Little Tikes **Wendy House** -a bit faded with the weather but perfectly sound **£25.**
Proline **fridge/freezer** in good condition, 4 years old. **£50.**
Tel. 01579 363609.

Thick **Blue Slate Fireplace Hearth Stone** 28" x 28" x 1½". **£50.** No offers.
01579 384658

EV7000 ELITE **Treadmill**, no incline, mains operated. Only used a dozen times. Very good condition. Buyer collects please (St Ive). **£150.**
01579 382304.

Blind for VELUX® Window
Blind colour Acacia Pebble (Cream)
Model Code:CGL Size Code:M08
Frame colour: silver
Size: Width 613mm, Drop 1160mm
Supplied in original unopened packaging:
£21.50 ono 01579 363497

Greenhouse, 8'x6' Poly Carb,
£30 (buyer to dismantle)
01579 383137

Ladies Genuine Leather **Motorbike Jacket**
- £20 ono
Higher Tremar **01579 346986**

Leopard Coat, faux fur. Calf length, cowl collar, matching hat. Medium size, 38"/40" bust. **£30 - 01579 345783**

Blue-grey **ladies bike**, Falcon Safari, Very good condition. Shimano brakes, front and bike light. Clip-in water bottle included. **£50** Please contact Alison on **01579 383361** In Callington, can deliver.

Pressure Washer £40
Leaf blower / vacuum £30
Peugeot 407SW **roof bars £40**
01579 362064

Very large, Swiss, circular, **stainless steel barbeque.** Little used. With 45kg charcoal. **£150. 01579 363997**

Lindam Safe & Secure metal **playpen £40**
ono 01579 363791

What's on in St Ive Parish ?		
WHAT'S ON	WHEN	CONTACT DETAILS
MILLENNIUM HOUSE		
Aikido	Thursday 7:00pm	
Antique & Collectors Fair	4th Sunday Monthly 10:00 - 4:00	
Badminton Club	Mon & Tues 7:30pm. Fr. 8.00pm	01579 363594 (Carol & Nigel)
Book Exchange	Daily	01579 363096
Breath of Air	Monday 1.00pm - 3.00pm	01579 345989 Pauline
Country Dancing	Alternate Thursdays 8.00 - 10.00pm	01579 382402 Ray Buckingham
Farmers Market	2nd Sat Monthly 9:30 - 12:30	01579 363096
Fitness Pilates	Monday 9:30 - 10:30am	07850 473428 (Dianne)
Ladies Netball	Friday 09:15 - 10:15am	07985 387472
Pensioners Lunches	Tuesday 12:00 - 2:00pm	01579 363096
Short Mat Bowls	Thursday 7:00pm	01579 208528
Village History Group	Last Monday Monthly 7:30pm	01579 208754 (Angus)
Wildlife Group	Quarterly	01579 362539 (Hilary)
Woman's Institute	2nd Wed Monthly 7:15pm	01579 363718 (Frances Tucker)
Yoga	Wednesday 7:00pm	01579 344464
Zumba Fitness Classes	Wednesday 7:00 - 8:00pm	01579 363096 (Millennium House)
PENSILVA VILLAGE HALL		
Brownies	Monday 4:00 - 6:00pm	01579 362239 Martha Oliver
Girl Guides	Monday 6:30 - 8:00pm	01579 363212 Jackie Browning
Pensilva Wednesday Club	Wednesday 2:30pm	01579 363221 Mrs Jean Conner
Pensilva Snooker Club	Wed 7:00pm + Various times	01579 362091 Phillip Bond
MIMS (light exercise)	Friday 1.00 - 3.00pm	01579 343702 (Mike)
Rainbows	Friday 4:00 - 5:00pm	01579 362091 Lynne Bond
Rangers	For Info	01579 362982 Kirsty Oliver
PENSILVA PRE-SCHOOL		
Pensilva Pre-School	Monday-Fridays 9:00 - 3:15 (session times available)	07890 023924 Mrs Suzanne Kinsman (Manager)
Tiny Tots Toddler group	Friday 9:15 - 11:15am	07890 023924 Mrs Suzanne Kinsman (Manager)

What's on in St Ive ?

ST IVE INSTITUTE

Art & Craft Group	Tuesday 1:00 - 5:00pm	01579 362216 (Jackie)
Coffee Morning	Wednesday 10:30 - 12:00	
Gardening Club	1st Monday monthly 7:30pm	01579 382762
Post Office	Wednesday 10:30 - 11:30	
St Ive Snooker Club	Monday & Thursday 7:00pm	01579 382315 R Bunkum

St Ive Institute available for hire. £3.50 per hour. This includes the use of the kitchen & electric (excluding wall heaters which operate on a £1 coin meter)

Contact Jill Ede 01579 384095

Hall meetings will now be held bi-monthly on the second Tuesday of the month

ST IVE & DISTRICT GARDENING ASSOCIATION

Meetings in St Ive Village Hall 1st Monday in the month at 7.30pm

Monday 3rd April A visit to **The Lodge**, Fletchers Bridge, Bodmin, PL30 4AN Assemble in St Ive car park to leave at 6.00 pm

Monday 8th May A visit to **Calamazag Nursery**, St Martin's Road, Looe, PL13 1NX. Assemble St Ive car park. Leave at 7.00 pm

Saturday 20th May **Plant Sale** in **St Ive Village Hall**. Doors open 1.30pm

Monday 5th June A visit to **East Down Barn**, Menhenoit, PL14 3QU
Assemble in St Ive car park to leave at 7.10pm

Visitors and new members are always welcome to join us.

ART AND CRAFT GROUP

We are a small friendly informal group who enjoy doing art and craft. If you paint or do any type of craftwork and would like to join us we'd love to welcome you.

There is no 'teaching' but help/advice is always forthcoming!

We meet at St. Ive Institute Hall from 1.00pm to 5.00pm Tuesday afternoons.

Only £3.00 for the afternoon plus 50p for tea/coffee and biccies.

If you are interested please give Jackie a call on **01579 362216**.

We look forward to meeting you.

Pensilva Post Office

Located through the Café on the 1st floor of Millennium House



Opening times:

Tuesday	-	9am to 1pm
Wednesday	-	9am to 12 noon
Friday	-	9am to 12 noon



MILLENNIUM HOUSE

THE MEL

**Licensed Bar
Free House**

Opening Hours

Mon - Thu	-	5 pm to 11 pm
Fridays	-	3 pm to 11 pm
Saturday	-	12 noon to 11 pm
Sunday	-	12 noon to 11 pm

Millennium House 01579 363096

