

**A 100 year old decaying ash tree is dismantled in St Ive churchyard (full story on page 6)**

## Disclaimer

The articles appearing in this magazine do not necessarily reflect the views of the Parish Council nor of the Parish Pump Editor.

## Parish Councillors Telephone List

David Waddington (acting chair)	01579 362654
Martin Corney	01579 382450
Roger Bennison	01579 363967
Pam Carter	01579 362640
Alan Neal	01579 362478
Stephanie McWilliam (Cornwall Councillor )	01579 362037

## Meetings of St Ive Parish Council

**2nd Monday monthly:** Parish Council Meeting, alternating between St Ive Village Hall and Millennium House (please refer to notice boards for the agenda showing start time and venue each month). Any changes to the regular dates (i.e. Bank Holidays etc.) will be publicised accordingly.

**4th Tuesday Monthly:** Parish Council Planning Committee Meeting, 7 pm at Millennium House Pensilva, followed by the Parish Council Finance & Administration Committee Meeting commencing at 7.30 in the same venue.

## Date of Next Parish Council Meeting:

Monday 13th March 2017 at 7.30pm at St Ive



Devon & Cornwall Police  
Building safer communities together



**101**

Minicom 18001 101

**Police Community Neighbourhood Office 01579 325454 at any time**

Your Community Support Officer is PCSO 30271 Linda Phillips.

Contact: [linda.phillips@devonandcornwall.pnn.police.uk](mailto:linda.phillips@devonandcornwall.pnn.police.uk).

Phone for a chat on 07703 885654. Leave a message & I'll call back when on duty

To report a crime call 101 or go to [www.devon-cornwall.police.uk](http://www.devon-cornwall.police.uk)

In an emergency call 999



## Contact details for St. Ives Parish Council and for Millennium House

Address for correspondence: Millennium House, Century Square, Pensilva PL14 5NF

General Parish matters should be raised initially with the Parish Clerk (Leesa Childs) who will present them to the Parish Council.

Telephone: 01579 363096, email: [stiveparish@btconnect.com](mailto:stiveparish@btconnect.com)

For accounts matters for the Parish and for Millennium House contact John Body, Finance Officer: 01579 363096, email: [millenniumhouseadmin@btconnect.com](mailto:millenniumhouseadmin@btconnect.com)

Millennium House enquiries and reservations: 01579 363096

email: [millenniumhouse@btconnect.com](mailto:millenniumhouse@btconnect.com).

On the web: Millennium House Website: [www.cornwallvenue.com](http://www.cornwallvenue.com)

Parish website: [st-ive-parishcouncil.gov.uk](http://st-ive-parishcouncil.gov.uk) Facebook: [facebook.com/stiveparishcouncil](https://facebook.com/stiveparishcouncil)

## Parish Pump Information and Contact Details

To contact the editor please email: [parishpump@btconnect.com](mailto:parishpump@btconnect.com)

or phone the Parish office: **01579 363096**.

Hardcopy submissions by post or by hand to the Parish office, Millennium House.

Softcopy submissions: By email to the editor in MS Word, MS Publisher, pdf, Tiff or jpeg. Please use A4 pages and minimum 16 point font as the Pump is initially produced in A4 size and reduced to an A5 booklet at the printing stage. If in doubt please contact the editor.

**Current Advertising Prices** including VAT at 20%

Per issue:      Quarter Page £7.50      Half Page £15.00      Full Page £25.00

10% discount for 12 months paid in advance.

Bargain Corner free ads by email to the editor or drop off at the Parish Office.

**Deadline for the Parish Pump is STRICTLY 15th of every month**

# THE MEL BAR

**Relax and wind down  
at the Mel Bar, Millennium House**



**sky SPORTS**

### From the Editor

The Parish Pump doesn't receive too many letters, so two letters a month, two months in a row, feels like a record! There's lots of other news too, including the sad news that Angie's Pantry (the café at Millennium House) will be closing on March 25th (see page 13). As yet I haven't heard what the arrangements will be after that date. I personally would like to thank Angie and the rest of the team for having provided such an excellent service for the last two years. I am sure that plenty of other well-wishers will join them on the 25th to say thanks.

There's a bit more about the Council elections this month but this may be the last time for a while. Nomination packs will go out on about March 20th and special rules (commonly known as 'Purdah') will come into force, preventing Council resources from being used for anything that could be construed as campaigning. As the Parish Pump belongs to St Ive Parish Council then (as I understand it) candidates, or groups of candidates, may not make statements in the Pump until the election is over. I hope you Pump readers will manage to overcome your disappointment and I will try my best to make it up to you by finding other interesting stuff to report in April and May :)

The election is on May 4th so the June edition will carry the results. All the best! Joe

### Millennium House Opening Hours

#### Reception

9am till 2.30pm Monday to Friday

#### Cafe (Angie's Pantry)

9am till 4pm Monday & Wednesday to Friday

9am till 2pm Tuesday

10am till 4pm Saturday

#### Bar

5pm till 11pm Monday to Thursday

3pm till 11pm Friday

12am till 11pm Saturday and Sunday

If no-one is available please leave a message in our **letter box** at the front of the building or on our answer phone by calling **01579 363096**.

## Letters to the Editor

From Chair of Governors - Pensilva School.

Over the past few weeks we have had increasing numbers of parents parking directly across the coned area in School Road. This coned area is in place to create a safe crossing area for children, parents and carers.

As a school we have decided to look at creating a parking charter that will be communicated to parents and the governing body will look at this shortly.

I have also asked the children to design some posters to communicate which areas are ok to park in and which are not.

But in simple terms - the 4 cones outside the school are there to prevent parking, under NO circumstances should you stop, park or even drop off your children in this area. Please drive further down the road.

When children arrive and leave school they are generally excited and sometimes won't be concentrating on the road. This SAFE area outside the school was created after we lost the School crossing patrol and was seen as the best alternative. If you park on the safe area you remove that safe area and reduce visibility for car drivers. If you decide to park in this safe area you increase the risk of a child being injured or killed.

**PLEASE THINK CAREFULLY BEFORE YOU PARK OUTSIDE THE SCHOOL.**

Regards

Craig Vaughnley - Chair of Governors

Dear Editor

I have just seen the minutes on the Parish Council website of the EGM held by the Parish Council on November 28, 2016 and see that there were questions raised about Martin Corney being conflicted due to his being a trustee of PCA.

To set the record straight, Martin was a trustee for a period of less than two months between May 21 and July 13 2015. He resigned almost a year and a half prior to the EGM and we registered his resignation with the charity commission very soon after we became a charity and were included on their website. In the period he was a trustee there were no trustee meetings at all.

All of this information is in the public domain and could have been easily checked.

Yours

Vickie Bishop

Secretary, Pensilva Community Association CIO

## Cover story - removal of the Ash tree from St Ive churchyard.

*Story and photographs provided by the contractor, Empire Tree and Garden Services of Liskeard. More info and photographs on their Facebook page.*

The removal of a majestic, mature Ash tree (*Fraxinus excelsior*) from the cemetery at St Ive church was sad, but necessary. With significant deadwood in the crown, decay in structural limbs and more than 30% decay at the stem, the tree would not be sustainable in the longer term and its removal was essential for the safety of those visiting graves and to prevent possible structural damage to the church and headstones. Delay would certainly have further compromised the structural integrity of the tree possibly removing the option of climbing and dismantling and resulting in the need for a crane dismantle at considerable expense. Whilst already a technically challenging task to climb and dismantle large pieces of timber and lower them safely between the headstones without causing any damage, there was also a keen focus upon the sensitivities of working in and around recent graves. Despite some dreadful weather conditions, the climbing and dismantling was completed successfully. Removal of the timber will be facilitated by an articulated mini-loader which provides power and manoeuvrability, albeit a tight squeeze at the churchyard gate! Whilst the removal of a mature tree is always a significant and noticeable loss to visual amenity and biodiversity, it is heartening to see the relatively recent planting of young trees within the churchyard. These young trees will enhance the species and age diversification of the tree population within the area and provide future generations with the benefits of a healthy and diverse tree population.

Kevin Johnson MBE 07720 892133

## **Pensilva Wednesday Club R.V.S.**

Meet in Pensilva Village Hall at 2.30pm on alternate Wednesdays

**ALL ADULTS WELCOME TO JOIN THE WEDNESDAY CLUB  
ALL WELCOME ON TRIPS**

<b>1 MARCH</b>	<b>Bingo</b>
<b>15 MARCH</b>	<b>A talk on Pig Farming by Ian Leiper</b>
<b>29 MARCH</b> 6	<b>Coach trip to The Range and Par Market. Non members very welcome. £8.00 For details and to book please ring Jane 362960.</b>

## **From Cllr Steph McWilliam - March 2017**

Well this is my last newsletter as your Cornwall Councillor for this administration. By the time the next edition comes out, we will be into the campaign period for the May election and it will be inappropriate for me to be using your parish magazine for communicating with you. I therefore want to thank you for your support over the last four years. It has been an honour and a privilege to be your representative. It has been a difficult period because of the huge savings that had to be made in the council's budget but I hope I have made a small contribution to minimising the impact. I am proud of my local community and wish the very best to whoever you choose to represent you next.

Despite the above, I remain your councillor until the election on May 4<sup>th</sup> so, if you have any problems relating to council services, please don't hesitate to give me a call. (01579 362037)

Speaking of which, I had a message left on my answerphone that was completely incomprehensible. It sounded as though the caller was underwater, though I'm pretty sure that wasn't the case! I don't know what went wrong but if you are still waiting for me to get back to you, please try again.

We are reaching the end of the process to make a recommendation on how many Cornwall Councillors there should be from 2021 onwards. It was made clear that we were expected to reduce the number significantly and our recommendation to Full Council will be for 99, down about 20% from the current 123. One important consideration for me is that the smallest division is 0.7 sq km and the largest is over 137 sq km. This is likely to go up to about 165 sq km if the recommendation of 99 is approved. I really believe this is as much as one Councillor should be expected to cover unless they cut right back on case work and their community leadership role, and just concentrate on the strategic role at County Hall. It would also mean that some councillors might be working with eight or even nine parishes, which again seems an awful lot of parish councillors and issues to represent and to work with in an effective way.

There is a great deal of debate at County Hall about the pressure on the NHS and social care. There are STPs (Sustainability and Transformation Plans) being developed and it is hoped that these will help GPs, hospitals and the local council work together to find new and more efficient ways of working by integrating health and social care. Integrating these services sounds simple, everybody thinks the idea makes sense but many of us are very concerned that it will be difficult to achieve. It still won't generate enough in savings to offset the increased costs of more elderly people with more complex problems, newer and more expensive drugs and treatments plus the increase in the population overall. Please keep an eye on this.

There is a lot of work going on to prepare for leaving the European Union and the impact this will have on Cornwall. I am glad to say that work is concentrating on both the risks and the opportunities, so whichever way you voted in the referendum, your hopes or your concerns are being carefully considered.

The referendum brought many people back to the democratic process so I hope this will continue. Whoever (or whichever party) you support, please make sure you are on the electoral register and use your vote in May.

Once again, thank you for your support over the last four years. It really has been a pleasure and a privilege. Thank you.

## The Latest from Your Parish Councillor - Martin Corney



The last Caradon Community Network Panel meeting had more members of the public than I've ever seen. This was because NHS Kernow and Cornwall Council presented their Sustainability and Transformation Plan which will change how our health and social care services are delivered in Cornwall. The plan is to supposed to provide a better service with less money. Inevitably hospital beds

or even complete local hospitals are at risk. It has been rumoured that Pensilva Health Centre is at risk of closure since GP practices with less than 5,000 patients are not thought to be sustainable. I asked about the possible closure of Pensilva Health Centre and was told that 5,000 is only a guideline, and not an absolute figure. I believe that the number of patients registered with Pensilva Health Centre is only a few hundred below the 5,000 needed for sustainability.

I've changed the name of the Google calendar I told you about last month to 'Millennium House What's On' as it was getting confused with the Millennium House Events Group which is a different thing altogether.

The Cornwall Council and Parish Council elections are due on 4th May and from the 20th March, when the election is called, the councils are not allowed to publish pieces by candidates. So there will be no pieces from me in the April and May Parish Pumps.

Don't forget the parish website [st-ive-parishcouncil.gov.uk](http://st-ive-parishcouncil.gov.uk) with council meeting agendas and minutes; also downloadable copies of the Parish Pump. For those of you who do Facebook, our St Ives Parish Council page is still being updated with parish news. Phone me, email me on [martin.corney@btinternet.com](mailto:martin.corney@btinternet.com) or "martin corney blog st ives" in search engines will find my blogs for you to comment on this article & other gems.

### **Pensilva Carnival Working Group**

This year's Carnival week will run from Sunday July 9th to Saturday July 15th.

We are asking for volunteers to come forward to help organise events during the week and for Carnival Saturday.

Any community groups interested in putting on events during the week, please contact Karen on 362196.

Date of our next meeting: Tuesday 21st March @ 7:30pm in Millennium House. Please come along.



MILLENNIUM HOUSE  
EVENTS GROUP



## Parish Elections – preliminary meeting of the Platform for Change group.

Following Ruth Wilson's letter in the February Parish Pump, people who had so far expressed an interest were invited to a meeting on February 23rd. Nine people attended, seven prospective candidates for the parish council elections, and two others who are not able to stand but who are keen to support. The purpose of the meeting was to establish a common platform of issues upon which the group could jointly contest the election. A consensus was easily achieved, as follows:

### If elected as councillors, we will:

- Make ourselves accessible and visible to the community at large. There will be regular 'surgeries' or drop-in sessions where one or more of us will be available to talk to people about their concerns. We will consult parishioners on important decisions. Information about parish council business will be made freely available.
- Work directly, and in conjunction with community groups, to find solutions to the problems affecting our parish and to improve the lives of its people, especially the most vulnerable.
- Find and implement a long-term solution to the Millennium House problem that does not place an undue burden on the parish ratepayers.
- Ensure that there is equality of representation for all parishioners. We are committed to ensuring that the make-up of the council is a fair match for the demographics of the parish as a whole, in terms of age and gender. The concerns of residents from all our villages and hamlets will be given equal attention: no 'poor relations'.
- Maintain our local amenities (including the bus shelters, some of which are looking shabby). If, in our age of austerity, money is tight, we will organise community work days for all who are willing and able to help.

This list is not final. We are very keen to hear from you all about your concerns on local matters and together we can devise strategies to help. To that end, there will be three public meetings (separate notice pg 14) where people can meet the candidates and question them, collectively and one-to-one. We very much hope that more potential candidates will emerge from this consultation process; we would particularly like to hear from women and younger people, who are so far underrepresented in our group (as they have been on the current and past parish councils). Our aim is to create a happy, united, cohesive group with an ambitious agenda for improvement. This will be an exciting time for our community and we would love more people to be a part of it by stepping aboard our Platform for Change.

Contacts: Ruth Wilson on 01579 363684 or Alan Moss on 01579 362064.



**VOLUNTEERING AT THE GROWING PROJECT IS CHANGING** Now that Spring has sprung, we will once again run 2 volunteer sessions a week. These will be Weds 10am - 2pm and Thurs 12-2.30 p.m. so we can get into full swing with our planting, weeding, digging and sowing. All welcome: the more the merrier. I would like to thank everyone who works alongside us week in, week out. Your contribution is most appreciated.

**CROPS AND PLANTING** We had to re-sow pea seeds after a 4 legged friend ate the first lot, but they are coming on nicely in my porch now. Those that were planted in the tunnel last autumn are in flower already, so we shall have an early crop: there is nothing like the first peas. We also have broad beans in flower and in modules. Some lucky box customers will be having our own salad leaves, coriander and purple sprouting broccoli this coming week and we still have red cabbage ready to cut. Garlic, red onions and shallots are in and shooting up outdoors; more lettuce has just been sown indoors. The busy planting season will start very soon now that the days are getting longer.

Our experiment this year will be sweet potatoes; they are very popular, but we've never grown them before, so keep your eyes peeled.

**OUR VEG BOXES** are beginning to include more of our own produce at last. We have been blessed for the last few weeks with fantastic tasty cabbages, caulis and potatoes from Jim Candy at Downterry. If I ever learn to grow like that, I shall be most happy.

To enjoy fabulous fresh local fruit and veg, delivered to your door every Wednesday afternoon, order your mixed veg box now. Prices are: £7.50 for 1 /2 people, £10 for 3/ 4 people, £15 family box and the very popular £5 fruit bag.

**OUR VEG STALL** has a new addition. We have a Free Wonky Veg box for those items that might have lost their initial bloom but which will still taste good. People seem to be enjoying them and, since we hate food waste, we're delighted. The stall remains popular and we appreciate your custom. Please put your cash in the post-box on the gate.

**COMMUNITY COMPOST SCHEME** We welcome your lawn clippings, used rabbit bedding, cuttings, etc at our compost bins by the gate. If you use weed-killer on your lawn, please dispose of your clippings through the Council scheme.

**The Growing Project CIC is a Community Interest Company** producing organic fruit and vegetables. We have opened the growing space at Kenwyn, Higher Rd to the community and welcome volunteers for all sorts of jobs. Contact Ruth Wilson 01579 363684/ 07853 244934 [thegrowingproject@orangehome.co.uk](mailto:thegrowingproject@orangehome.co.uk)  
[www.thegrowingproject.org.uk](http://www.thegrowingproject.org.uk)

## **Pensilva W.I Annual and February Meetings**

Frances Tucker president welcomed members and Marilyn Leggett, W.I County Adviser, to the annual meeting of Pensilva W.I.

Frances in her report thanked the committee and members for all their support for the last year stating that it has been a very busy year with lots of well supported activities. Jenny Thomas retiring secretary gave her report and it always surprises us how much we have managed to cram into the year. Frances thanked Jenny for all the help and support she has given her in the last 4 years as secretary. She was presented with a bowl of spring plants.

Frances has agreed to take on the post as President for another year, Verna Dawe as treasurer and Jean Hoare as Secretary. Marilyn gave us a short update on county news and presented cups and gifts for the competition winners for most points for the year. The flower of the month cup. 1st Verna Dawe. 2nd Jill Pascoe. 3rd Cherry Woodhouse. The cup for most points in the competitions 1st Cherry Woodhouse. 2nd Verna Dawe. 3rd Sheila Wherley.

Carol Vivian historian gave a fascinating talk on the Barretts of Duloe and the History of Farming in that area. It was certainly an evening down memory lane for our president as a lot of the photos had been supplied by Mrs Jean Julian, Frances's mother. Carol started her journey by showing old tithe maps of some of the farms. We saw photos of Jack Barrett at Peakes Water with his horses. This photo was taken in the early nineteen hundreds. The family later moved to a farm in Duloe parish and we saw photos of farmhouses and farmyards past and present at Badham, Westnorth, Tredinnick and Tremadart. Also Shire horses, South Devon cattle with long horns, also sheep and Lucy the pig who looks a real caricature. (We wonder where she ended up too). Harvest time was not only a time of hard work but also a time when families got together to share work and enjoy themselves. There were some lovely photos of harvest time. Carol explained that a lot of the early photos were taken by holiday visitors who stayed at the farms as most families at that time did not possess a camera. It was a very interesting talk enjoyed by us all.

We were reminded of the Marie Curie Daffodil Tea 2.30 at Pensilva Village Hall on Saturday 11th March. Donations of cakes, raffle prizes and articles for the bring and buy stall are requested. Winners of this month's competitions: A poem on Farming. 1st Jenny Thomas 2nd Verna Dawe. Flower of the month: 1st Jean Hoare. 2nd Mary Gilbert 3rd Jill Pascoe. The next meeting: 8th March 7.15pm at Millennium House. Bob from Trerosa Studio will give a pottery demonstration, so this will be a chance for us to have a go if we wish. It should be fun so why not come along to the meeting as a visitor you would be most welcome.



## **Clean sweep by Pensilva Pupils**

Table tennis players from Pensilva Primary took part in a local tournament held at Dobwalls Primary School. Over 24 children took part and played initially in group stages before progressing to the quarter finals, semi finals and final. Competition was very tight

and all the players played magnificently. Four children from Pensilva reached the finals!!

In the girl's final Daisy Minns defeated Isobel Wilton 11-9 and in the boy's final Samuel Lambert beat George Rule Hodson 11-7.

## **Quethiock School**

It has been a very busy half a term at the School, the children have visited Liskeard Fire Station for a Life Skills event. Zero Gravity have been visiting for gymnastics coaching and the children have also had weekly coaching from Plymouth Raiders basketball team. A very informative visit from Liskeard museum has inspired the children to consider opening their own museum. The final week before half term has been filled with science experiments and lots of fun activities including our KS1 children making Egyptian Cake. There is lots happening when we return including fencing coaching and the introduction of Muddy Mondays for the early years. The School would be really grateful if any members of the community who shop in Sainsbury's could collect the vouchers they are offering at the moment for the school, Thank you. Visits to the school are welcomed by any prospective parents. Please call the school to book an appointment. 01579 343588



**WE REGRET TO ANNOUNCE THAT**

***ANGIE'S PANTRY***

**WILL CLOSE ITS DOORS FOR THE LAST TIME ON  
SAT 25TH MARCH, AFTER TWO YEARS. PLEASE  
JOIN US ON THE 25TH FOR A DAY-LONG PARTY  
(10-4) TO THANK ALL OUR LOYAL CUSTOMERS.**

**THANKS. ANGIE.**

**1st floor Millennium House Tel: 07716 905242**

**OPENING Mon & Wed to Fri - 9am to 4pm**

**TIMES Tue - 9am to 2pm Sat 10am - 4pm**

**10% discount for senior citizens.**

**Ruth and Colleen's Monthly**

**BINGO**

**At Millennium House**

**on Tuesday 7th March**

**Eyes down at 7:30pm**

**Over 18's only**

**£££ CASH PRIZES £££**

# **Parish Council Elections - Public Meetings**

Meet the candidates from **PLATFORM FOR CHANGE**

Your chance to raise your concerns with the people who want to bring positive change to our parish. Help us to shape a better future!

Thursday March 9th from 9.00am at Pensilva School.

Thursday March 9th from 7.30pm at Millennium House.

Friday March 10th from 1.00pm at St Ive Institute and Village Hall

Tea, Coffee and biscuits will be served at the three events.

Please come and talk to us.

Tell us what you want us to do to make our parish better.

For more information about the group or about the meetings contact -  
Ruth Wilson 01579 363684. email: [ruth@ruthwilson1.orangehome.co.uk](mailto:ruth@ruthwilson1.orangehome.co.uk)  
or Alan Moss 01579 362064. email [alan@alan693.orangehome.co.uk](mailto:alan@alan693.orangehome.co.uk)

**PLATFORM FOR CHANGE**

**A VERY DIFFERENT KIND OF COUNCIL**

## ***FRIENDS OF PENSILVA HEALTH CENTRE***

*On behalf of the Friends of Pensilva Health Centre I wish to express our sincere thanks to Staff and customers of Pensilva Stores for the truly generous donation of £655. The support and generosity is very much appreciated. All monies received are used to help purchase extra equipment for the Health Centre that the Doctors feel would be of benefit to us all - the Patients. I would add that a substantial amount of equipment has been purchased in the past few months, thanks to the generosity and kindness of supporters, be it through fund raising, bequests or donations received.*

## Village Churches Together.

### What's next?

This group is not solely for members of the Anglican and Methodist Churches in St Ive and Pensilva and the Methodist Church in Menheniot so if you worship elsewhere (or nowhere) and would like to be a part of this initiative you will find a warm welcome at our meetings.



**Tuesday 7<sup>th</sup> March at St John's Church Pensilva at 7.30pm**

**Tuesday 4<sup>th</sup> April at St Ive Methodist Church at 7.30pm**



**Plans for our Village Churches  
Together Treasure Hunt  
which will be loosely  
based on the TV  
programme 'Treasure Hunt'**



**are taking shape slowly and we are now looking to  
hold the event in May.**



**In the meantime we are holding an  
afternoon tea and get together on  
Saturday 18<sup>th</sup> March at St Ive Methodist  
Church from 2 to 4pm. Hope to see you  
there.**

For further information please contact via email

Keith Mutton [amutton620@btinternet.com](mailto:amutton620@btinternet.com)





## **ST IVE & DISTRICT GARDENING ASSOC. PROGRAMME 2017-18**

Meetings are held in St Ive Village Hall at 7.30pm

**Visitors and new members are always welcome to join us.**

<b>Monday 3<sup>rd</sup> April</b>	A visit to <b>The Lodge</b> , Fletchers Bridge, Bodmin, PL30 4AN Assemble in St Ive car park to leave at 6.00 pm
<b>Monday 8<sup>th</sup> May</b>	A visit to <b>Calamazag Nursery</b> , St Martin's Road, Looe, PL13 1NX. Assemble in St Ive car park to leave at 7.00 pm
<b>Saturday 20<sup>th</sup> May</b>	<b>Plant Sale</b> in St Ive Village Hall. Doors open 1.30pm
<b>Monday 5<sup>th</sup> June</b>	A visit to <b>East Down Barn</b> , Menhenoit, PL14 3QU Assemble in St Ive car park to leave at 7.10pm
<b>Saturday 24<sup>th</sup> June</b>	A visit to <b>Lethytep</b> , Penadlake, Lanreath, PL13 2PG Assemble in St Ive car park to leave at <b>1.30pm</b>
<b>Monday 3<sup>rd</sup> July</b>	A visit to <b>Melyn Gy</b> , Halton Quay, PL12 6SL Assemble in St Ive car park to leave at 7.00pm
<b>Saturday 5<sup>th</sup> Aug</b>	A visit to <b>Lower Charaton Cottage</b> , Charaton Cross, Pensilva PL14 5RQ. Assemble St Ive car park leave at <b>1.40pm</b>
<b>Saturday 2<sup>nd</sup> Sep</b>	<b>St Ive Village Show</b> with classes for your fruit, vegetables, flowers, cookery and handwork
<b>Monday 4<sup>th</sup> Sep</b>	<b>Michael Stephens</b> , Creating a scented garden
<b>Monday 2<sup>nd</sup> Oct</b>	<b>Simon Miles</b> , Forest Gardening, how it works
<b>Monday 6<sup>th</sup> Nov</b>	<b>Gary Long</b> , China, its plants, people and places
<b>Monday 4<sup>th</sup> Dec</b>	<b>Charlie Pridham</b> , Maximum effect, Minimum effort, streamlining your garden
<b>Saturday 6<sup>th</sup> Jan</b>	<b>Annual Lunch</b> details tbc
<b>Monday 5<sup>th</sup> Feb</b>	<b>Jenny Edrich</b> , Stinkbombs, Samphire & Squills, wild flowers around Cornwall
<b>Monday 5<sup>th</sup> Mar</b>	<b>7pm Annual General Meeting</b> Then 7.30pm <b>Jo Toterdell</b> , Daffodils in the Tamar valley

**Membership £4 a year. For further details call 01579 382762 or 382512**





**PENSILVA W.I. will be holding an  
AFTERNOON TEA**

**IN AID MARIE CURIE CANCER CARE**

**At PENSILVA VILLAGE HALL**

**On SATURDAY 11<sup>TH</sup> MARCH at 2.30pm.**

**RAFFLE AND BRING AND BUY.**

**Entry £2.50 to include tea and cakes.**



**MILLENNIUM HOUSE**  
**PENSILVA**  
**INDOOR CAR BOOT SALE**  
**12<sup>TH</sup> MARCH 2017**  
**10AM - 2PM**  
**£5 PER TABLE**  
**BOOKINGS - 01579 363096**



**Upcoming Quizzes in  
Millennium House**

**Next Quiz**  
**Saturday March 25th 2017**  
**at 7:30pm**  
**Then May 6th 2017**

**Organised by and raising  
funds for**

***All Being Well***

## **East Cornwall Bach Choir concert at** **St Martin's Church, Liskeard**

On April 1st , 7.30pm at St Martin's Church Liskeard, our choir will perform a concert of lovely East European Music by Zoltan Kodaly, Antonin Dvorak and others. We have a classical violinist playing very exciting Gypsy music plus Jonathan Delbridge, who is very well known locally, as the concert accompanist. It promises to be a very memorable musical event. Very many thanks. Ruth Atkinson (East Cornwall Bach Choir Publicity Team.)

### **Pensilva Primary School**



Sainsbury's  
**Active Kids**  
Eat well • Move well • Live well

Pensilva School are collecting the Sainsbury's Active Kids Sports vouchers. If you shop in Sainsbury's and would like to help local children benefit from a healthier lifestyle, there is a collection box at the school. Thank you in advance.

### **Supporting Guiding & Scouting Activities in Pensilva** **200 CLUB Draw Results for January**

<b>1st No. 39</b> <b>Mr T Hicks</b>	<b>2nd No. 76</b> <b>Mrs S Rogers</b>	<b>3rd No. 3</b> <b>Mr P Elliott</b>
--	--	---

**Thank you for your support**

WWW.PENTIDDY.CO.UK 01579 363775



Saturday **8**th April

10am-4pm

# Pentiddy Open Day and Bean Pole Fair

## *Celebrating Sustainability in South East Cornwall*

a free event for all the family

Car parking is limited so please walk, cycle or lift where ever possible. If over-flow parking is needed then it will be sign posted on the day, though be aware it may involve an extra 10 minute walk!



Unfortunately some areas of the site are not suitable for wheelchairs or pushchairs but a visit to the house, garden and some of the stalls will still be possible. Please phone for further information.

Pentiddy Woods,  
Attwood Lane,  
Pensiva, Liskeard  
PL14 5QJ



The Callington Singers are delighted to announce that they have been awarded a grant by Cornwall Council's 'Community Chest' scheme. We will use the money to fund a singing workshop with proceeds to Callington Heritage Museum. The workshop is designed so that anybody with any singing ability can sing well-known choral works. Non-singers can help by coming to the concert where the workshop participants will perform what they have learnt.

# Singing Workshop & Concert

## The Greatest Hits of Choral Music

with

## The Callington Singers



**St Mary's Church, Callington, 29th April 2017**

**£10 per singer £5 admission to concert**

**Workshop 11am-5pm. Concert Performance at 5:30 p.m.**

To include: Zadok the Priest & Hallelujah Chorus by Handel; Gloria (opening movement) by Vivaldi;  
Ave Verum, Laudate Dominum & Lacrimosa by Mozart; In Paradisum & Cantique de Jean Racine by Fauré;  
Jerusalem by Parry; Antiphon by Vaughan Williams; Panis Angelicus by Franck; The Heavens are Telling by Haydn;  
Abendlied by Rheinberger and Tollite Hostias by Saint-Saëns

**All Proceeds to Callington Heritage Museum**

**To Book: 01579 370323 or contact via our website [www.callingtonsingers.org](http://www.callingtonsingers.org)**

Musical Director Graham Williams; Accompanist: Mark Smith



Funded by Cornwall Council Community Chest Grant

For an application form and information pack, please use the contact form on our website, or telephone 01579 370323  
<https://callingtonsingers.org/> <https://www.facebook.com/CallSingers/>



Supporting  
children's hospice  
SOUTH WEST  
Registered Charity No. 1003314



An evening with...

**JOHNNY  
COWLING**

ELIOT HOUSE, LISKEARD

FRIDAY 12TH MAY 2017

at 7.30pm

**Ticket only event**

**Contact Pat**

**£12.50 including Pasty Supper**

**on 01579 362959**

## Pensilva Memory Café

Are you caring for someone with Dementia, or do you perhaps have concerns about your own memory? It can be lonely and worrying but you're not on your own. Many people around you are in the same boat. You don't have to feel isolated. More people than ever are becoming dementia aware, and most organisations need, and want, to be dementia friendly.

You may have seen posters for Memory Cafes and wondered what they are about. They are a great place for people with dementia and memory problems to socialise in an informal and friendly atmosphere. Memory Cafes are held in Liskeard, Callington, Launceston, Downterry, Looe, and many more places in the South West. Most are held monthly, some are more frequent.

Pensilva has its own Memory Cafe. It is a small friendly group who meet once a month for tea and cake and a bit of relaxing fun. We might have some music, a simple game or quiz, and a bit of reminiscing. You can join in if you want to, but nothing is compulsory. We hope you will just relax and not worry about anything for a couple of hours. There is no charge but we do appreciate a donation in the region of £1 each towards expenses.

It might be worth coming along to join us just to see what goes on. You might find it beneficial to yourself, or your partner, or a parent, or friend. You might even enjoy it. Why not give it a try? You'd be most welcome. There's nothing to lose.

We meet on the fourth Thursday of each month from 2pm - 4pm. We'd love to see you at St John's Church, next to the Millennium Centre, PL14 5NF.

For more information contact Carolyn or Pat - 01579 363461 or 01579 362698  
email carolynandgeoff@gmail.com or patdilworth@hotmail.co.uk

If you are a carer of anyone, of any age or condition (not just dementia), you will benefit enormously from the help of Kernow Carers Service. Freephone 0800 587 8191. Leaflets are available at the cafe.

## *PENMILL ART GROUP*

We are a small, friendly group using all art mediums. If you paint we would love you to join us. We meet at Millennium House  
**10-2 every Monday.**

Please come & see us or phone Pam on  
**01579 363441.**



# **Community Lunch**

First Sunday of every month 12pm for 12.30pm  
3 Course Lunch with Tea and Coffee

**Adults £7.95p**

**Children (*Under 12*) £4.95p**

At Millennium House, Pensilva

**Bookings required:**

**Call Graham or**

**Charmayne**

**on 01579 363096**



## **Pensioners Lunch**

2 Course Meal plus Tea or Coffee  
**Only £5.50**

**Every Tuesday here at Millennium House**  
**Speak to our reception or**  
**telephone Graham on 01579 363096**



**So why not join us for Good  
Food and Good Company, all  
on the day you collect your  
pension?**



# ***Badminton?***

Come and join our relaxed and friendly group at Pensilva Millennium House

**Mon & Tue 7.30 - 9.30pm**  
**Friday 8.00 - 10.00pm**

**For further info phone**  
**Nigel or Carol on**  
**01579 363594 or**  
**07885 798370**

## *All Being Well*

**Your local, friendly gym.**

Seventeen years working in our local community to improve health, fitness and well being.

Give us a call on **01579 363890** or drop in to see us at Millennium House, Pensilva.

### Opening hours:

Mon/Wed/Fri	10.00 to 3.00
and	5.00 to 9.00
Tues/Thur	9.00 to 1.00
Saturday	10.00 to 1.00

## **MOBILE LIBRARY**

The County Mobile Library visits our area once a month on Fridays of "Week 3" (NOTE: not necessarily the 3rd Friday of the month).



**Next visits: March 17, April 7, May 12, June 9, July 7.**  
**Stops at the Victoria Inn, Pensilva at 10.25 to 10.45am and at Quethiock Church 11.00 to 11.20am.**

## PENSILVA VILLAGE HALL

Anyone wishing to book the hall for meetings, birthday parties or fundraisers please contact Peter or Jackie Browning on **01579 363212** or email **[peter@pensilva.freeseve.co.uk](mailto:peter@pensilva.freeseve.co.uk)**.



Please note that as well as hall rent there is a coin meter for heating at 40p/hr.

We hold a Hall users and committee meeting on the fourth Monday of each month at 7.00pm. Please feel free to come along and support us.

### Organisations that meet in Pensilva Village Hall

Meeting Times	Organisation	Contact Person	Telephone
Mon. 4:00 - 6:00	Brownies	Mrs Martha Oliver	01579 362239
Mon. 6:30 - 8:00	Guides	Miss Caroline Hambly	01579 363228
Alternate Wed. 2:30 - 4:00	Wednesday Club	Mrs Jean Conner	01579 363221
Wed. 7:00 & various	Snooker Club	Mr Philip Bond	01579 362091
Fri. 1:00 - 3:00	MIMS (light exercise)	Mike	01579 343702
Fri. 4:00 - 5:00	Rainbows	Mrs Lynne Bond	01579 362091

### St Ive Institute & Village Hall

Every Wednesday	10:30am to 12 noon 10:30am to 11:30am	Coffee morning Travelling Post Office
First Monday	7:30pm	St Ive Gardening Club
Every Monday & Thursday	7:00pm	St Ive Snooker Club

## **PENSILVA HEALTH CENTRE - PATIENT PARTICIPATION GROUP**

We are a group of patients who meet regularly with the Health Centre to bring forward for discussion ideas, comments and suggestions about your surgery. In the past we have held open days, helped at the flu clinics and participated in a trial Peoples Commissioning Board Project.

We also organise a Carer's and bereavement group (see below) and a 'Walking for Health' group

**(Contact Ann Wood 01579 364085).**

You can contact us directly or through the Health Centre.

## **PENSILVA HEALTH CENTRE CARERS AND BEREAVEMENT GROUP**

**Are you a carer, bereaved or lonely? Then come along and join our Group. Tea, Coffee and plenty of friendly chat and, when possible, local trips to various venues.**

**Meetings are held every third Thursday of each month at 11.30.a.m.  
Meet in Millennium House car park.**

**For any information please contact Jean Connor 01579 363221**

## **PENSILVA HEALTH CENTRE - Baby Clinic First Thursday of every month, from 1 to 2pm**

A friendly health visitor will be on hand to weigh your baby and give friendly, professional advice.

**For information call the health centre on**

**01579 362249**

**NHS  
REGISTERED**



**BREATH  
OF AIR**

**SUPPORTED BY  
LOCAL DOCTORS**

## **Do you suffer with various long term health conditions?**

Come along and join our small, friendly group.  
For company, light exercise and support.

We meet at Millennium House every Monday from 1.00pm - 3.00pm

For more information contact us:

Pauline **01579 345989**

Jeanette **01579 363691**



The **co-operative**  
Community Fund



### **Struggling with Sight Loss?**

iSight Cornwall offers practical help to people living  
with sight loss in Cornwall including:

Low Vision: Advice for low vision aids

Assistive Technology: Advice on products

Benefits Advice: Assistance to claim entitlements

Equipment Demonstration: Advice on gadgets

Social Clubs & Activities: Links to clubs & activities in the county

For more details Telephone 01872 261110 or visit



# St Ive Church

## Services at 11:15am Every Sunday

- Mar 5th      Holy Communion
- Mar 12th     Family Service - *Small pets welcome.*
- Mar 19th     Holy Communion. Lunch follows this Service
- Mar 26th     Morning Worship
- Mar 30th     Healing Workshop 11am to 1pm
- .....

## Other March Events

- Fri 3rd      **Home Produce and Bric-a-brac with Lunch** 10:30-1:00pm  
Home made cakes etc, fresh vegetables, locally made pasties, pickles, jams and much more. Farm-fresh meat from Trehill Farm Produce.
- Sat 4th      **Table Top Sale** 10:30 to 3pm.  
Lots of Tables, Bargain Prices, Homemade Refreshments, Farm Fresh Meat, Ample Parking
- Sun 12th     **Cream Teas** 2:30 to 5pm
- Sun 19th     **Lunch in Church.** 12:45pm. All welcome. Only £7 for 2 courses.
- Fri 24th     **Lent lunch**

Reverend Margot Davies      **01579 208698** email [margotaj@tiscali.co.uk](mailto:margotaj@tiscali.co.uk)

Church Wardens Brian Dwelly      **01579 364010** email [btdwelly@aol.com](mailto:btdwelly@aol.com)

Colin Catchpole      **01579 383867** [ccatchpole@hotmail.com](mailto:ccatchpole@hotmail.com)

Please let the Priest or Churchwarden know of anyone requiring a home or hospital visit.



## Skittles Evening at St Ive Village Hall

18th March at 7pm

Adults £2 - Children Free



# ST JOHN'S CHURCH, PENSILVA

## *Services for March 2017*

*Anglicans and Methodists share services at 11 am each Sunday, coffee served before service*

Sunday 5th	(9.30am 11 am	Anglican Benefice Eucharist at St Cleer) Mrs Anita Nicholson
Sunday 12th	11 am 5pm	Anglican Holy Communion Service <b>Food 4 Thought</b> at St Ive Methodist Chapel
Sunday 19th	11 am	<b>Café Church</b>
Sunday 26th	11 am	Rev. Sue Hill

**Afternoon Tea** Friday 3rd March at 3pm. Bring & Buy, everyone very welcome.

Thursdays 10am at St. John's Church there is a **Café-style Service** followed by coffee and chat. Everyone welcome to join us.

**Ashing Service** Wednesday 1st March, 7pm at St. John's Church

**Lent Lunches** at St John's, from 12 noon every Thursday from 2nd March to 6th April. Come along and enjoy home made soup.

**Prayer Group:** Friday 17th and 31st March. Please ring Eileen on 362580 or Carolyn 362698 if you would like prayer for yourself or someone else.

**Fellowship Group,** 7:30pm at St. John's Church on Friday 10th and 24th March. Further information from Geoff or Carolyn on 362698.

*For further details of the Services held in St John's, if you know of any illness or need in the village or if you would like your wedding or baptism in the church, please contact: Geoff Cox - 362698 or Frances Tucker - 363718*



**SEW, KNIT AND NATTER.**  
**WHY NOT JOIN US ON**  
**THE LAST TUESDAY OF EACH MONTH**  
**for sewing, knitting or just for a chat and a**  
**cup of tea or coffee and cake.**

# **St Ive Methodist Chapel**

## ***Services for March 2017***

**Sun 5th Mar**      11am    Rev Tom Osborne with Communion

No evening service

**Sun 12th Mar**      11am    Mr Julian Langston

5pm    United 'Food for Thought' at St Ive

**Sun 19th Mar**      11am    Mr Brian Westlake

No Evening Service

**Sun 26th Mar**      11am    Mr Alan Libby

6pm    United Service

Most services during the winter months will be held in the Schoolroom  
"Village Churches Together" on Tuesday 7th March at 7:30pm at St John's Church Pensilva. Please ring Keith on 382334 for details. Everyone welcome.

The Chattermakers Craft Group will meet on Thursday 2nd, 16th and 30th March in the Guild room from 7:30pm. Anyone wanting more details please contact Kathryn on 01579 382334. All welcome.

The Village Church Prayer meeting will be held in the Guild room on Wednesday 1st, 15th and 29th March from 7:30pm. All welcome.

Callington & St Ive Methodist Guild meetings at Callington Methodist Church on Mondays @ 7:30pm:

6th Mar - Musical evening with Gabrielle Lewis & friends

13th Mar - Tony Smith, "Faith at work" "housing international cricketers"

20th Mar - 6.15pm AGM 7.30pm Meal.



## **Skittles Evening at St Ive Village Hall**

**18th March at 7pm**

**Adults £2 - Children Free**





## ROMA SORRENTO

20 mile range between charges

Driver weight up to 21 stone

4" ground clearance

Serviced by *More Than Mobility* Plymouth

Used only for 3 short  
journeys in 4 years.

**£600**

Tel: 07796 335117



## Westwood Garden Maintenance



*Antony Watts*

*Grass Cutting, Clearance*

*Weeding, Turfing*

*Hedge Cutting*

*Patio Cleaning, Planting*

*Regular Visits / One-off Contracts*

*Residential & Commercial*

**FREE ESTIMATES**

01579 362019   [www.westwoodgm.co.uk](http://www.westwoodgm.co.uk)   07952 094472



## PENHARGET FARM B&B

PENSILVA



TEL: JULIE ON 01579 362221

[www.penharget-farm-cornwall.co.uk](http://www.penharget-farm-cornwall.co.uk)

[penhargetfarm@gmail.com](mailto:penhargetfarm@gmail.com)



## D.J.A. BUILDING SERVICES

ALL ASPECTS OF PROPERTY  
MAINTENANCE  
BUILDING & REFURBISHMENT

- \* Bespoke Furniture and Kitchens
- \* Wardrobes and Bookcases
- \* Garden Sheds, Poultry Houses & Small Animal Shelters
- \* Over 30 years' experience
- \* Fully insured \* References available
- \* Free estimates \* No VAT

Call David

**01579 364050 /  
07767662635**



# KV Accounting Solutions

## Guide to automatic enrolment

### *Information for Employers*

The law on workplace pensions has changed. Under the Pensions Act 2008, every employer in the UK must put certain staff into a pension scheme and contribute towards it. This is called 'automatic enrolment'.

Whether you're a hairdresser, an architect or employ a personal care assistant, if you employ at least one person you are an employer and you have certain legal duties.

**For your FREE Guide to Auto enrolment and what it could mean for your business contact us.**

Email

[Katevaughnley@gmail.com](mailto:Katevaughnley@gmail.com)

Tel

01579 364083 / 07725004152

[www.kvaccountingsolutions.co.uk](http://www.kvaccountingsolutions.co.uk)





Avalennek, Caradon Town,  
Upton Cross, Liskeard  
Cornwall PL14 5AR  
Telephone 01579 363598  
Mobile 07901 538132  
[chrisrounsevell@tiscali.co.uk](mailto:chrisrounsevell@tiscali.co.uk)

## **HOG ROAST EQUIPMENT HIRE AND MEAT SUPPLY**

Hog Roasts For Those Special Occasions  
Self Catering or Hassle Free Service  
Everything done to your special requirements

**CHRIS ROUNSEVELL**  
**TRADITIONAL BUTCHER**

## **Trerosa Studios**

**Pottery & Woodturning  
activities for you to enjoy**

- ✓ Well equipped
- ✓ High quality professional tools
- ✓ All materials provided
- ✓ Small friendly atmosphere
- ✓ Help / tuition from qualified teacher if required

**01579 647247 or**

**07486 089466**

Email: [bob@trerosacrafts.co.uk](mailto:bob@trerosacrafts.co.uk)  
**[www.trerosacrafts.co.uk](http://www.trerosacrafts.co.uk)**

## **D. Hall**

### **Painter & Decorator**

Interior & Exterior Painting  
Kitchens & Bathrooms  
Wall & Floor Tiling  
Covering all General  
Household Maintenance



## **Derek Hall**

Mobile: 07974 066 292

Tel: 01579 362 783

# KEEP IT TIDY

General Property Maintenance  
including Decorating, plus Electrical



**HONEST PRICE**  
for  
**QUALITY WORK.**



**No Job Too Small**

**Kit Rickard**

18 Higher Glen Park  
Pensilva

**Phone:** 01579 363378

**Mobile:** 07855 699071

**Email:** KITKeepItTidy@hotmail.com



**GROOM**  
**WITH A VIEW**

Offering a Caring  
& Experienced  
**Dog Grooming Service**

City and Guilds Qualified

Telephone **01579 326652**

Email

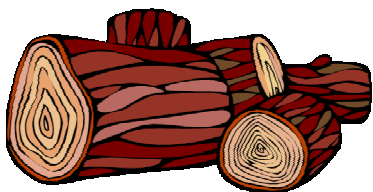
[groomwithaview@btinternet.com](mailto:groomwithaview@btinternet.com)



Find us on  
**Facebook**

Minutes from Golitha Falls & Siblyback

## SEASONED LOGS



**MIXED LOAD**  
or  
**HARDWOOD**

Tel Jonathan

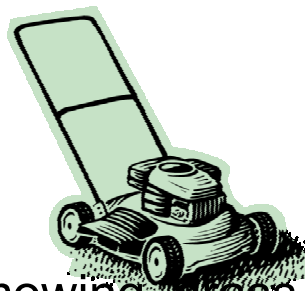
Mobile 07966 070725

or

01579 363157

Also tree/hedge work  
undertaken

## DAVID HEWETT GARDEN SERVICES



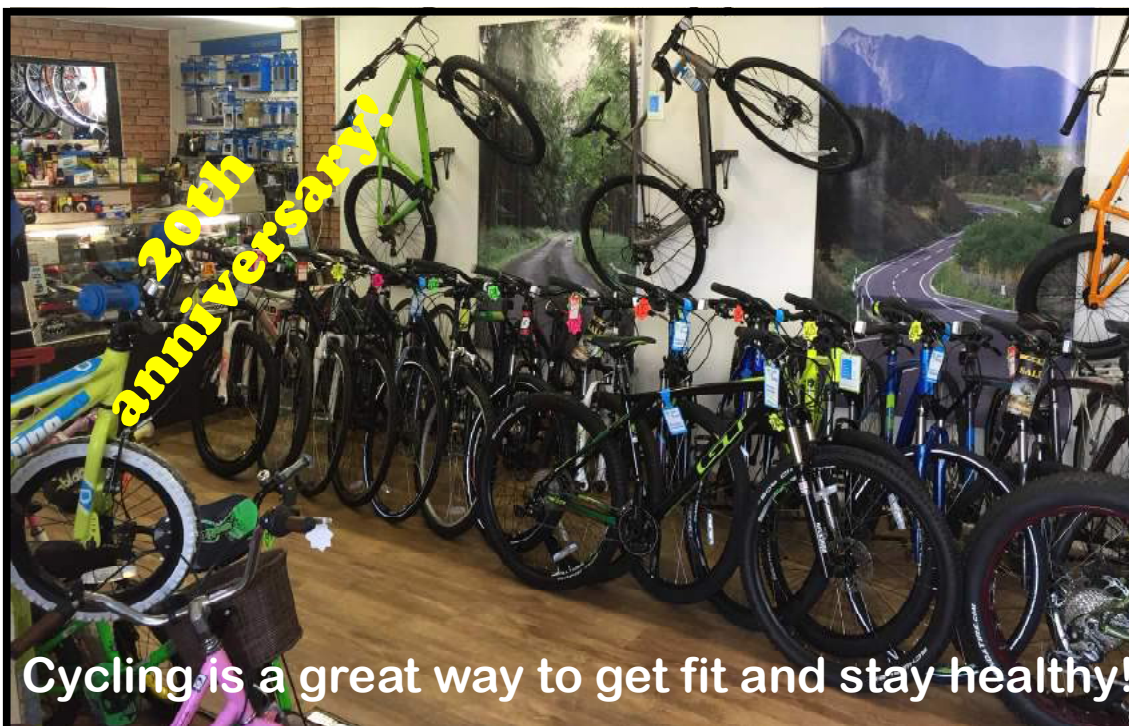
Lawn mowing, grass cutting,  
strimming, hedge cutting,  
general garden maintenance

20 years' experience

Fully insured

**01579 363796**





Cycling is a great way to get fit and stay healthy!

Great range of bikes always in stock!  
 Expert repairs with quick turnaround!  
 Reasonable prices!  
 0% Finance available on new bikes!  
 Professional, friendly advice!

**Liskeard Cycles** Pig Meadow Lane, Liskeard.

Proprietor: Russell Hall      [www.liskeardcycles.co.uk](http://www.liskeardcycles.co.uk)

Tel: 01579 347696      email: [liskeardcycles@gmail.com](mailto:liskeardcycles@gmail.com)

# SCOTT BERRIDGE

Complete Property Refurbishment & Building Maintenance

INTERNAL & EXTERNAL DECORATING  
 PAPER HANGING • TILING SPECIALISTS  
 PLASTERING • PLUMBING • CARPENTRY  
 FENCING • DECKING • PATIOS

- Local Pensilva • 25 years experience in Cornwall.
- Proper job • Clean & Tidy • Good references
- Trustworthy • Excellent prices. • Free estimates.

[scottberridge@me.com](mailto:scottberridge@me.com)

07889 218 710 (Daytime)      01579 362 006 (evenings)





## **Computer Tamer**

Home help

for all your Computing needs.

01579 320547 t.bedden@btinternet.com

Down to earth, jargon-free tuition, advice, repairs, troubleshooting, upgrades & installation.

Puzzled by email setup, anti virus, backing up photos or any other aspect of using your machine?

Need that computer set up or repaired?

Need a website designed or updated?

For all this and more call Tony for a free chat about your needs. I can visit you at your home. A reasonable hourly rate with a 1 hour minimum to cover travel costs. Talk to you soon.

## **Window Cleaner Window Cleaner**

Also any upvc cleaned

i.e. fascias, gutters, etc.

**gutters cleared & unblocked**

**Please phone Rob**

**01579 384435**

**07990 996886**

## **Window Cleaner Window Cleaner**

## **PJR Garden Services**

### **Phil Rule**

All aspects of garden work - grass / hedge cutting, patios, fencing etc.

**Mobile:**

**07551 969241**



## **Toe Nail Cutting Service**

**Home visits £15**

**Michelle Molloy**

**Foot Health Practitioner**

**Tel: 01579 208595**

**Friendly, Professional Service  
Fully Qualified and Insured**

**OPEN FOR RETAIL, TRADE & COMMERCIAL ENQUIRIES**

# CORNWALL TILE CENTRE

[www.cornwalltile.com](http://www.cornwalltile.com)

tile**italia**

The **Natural**  
TILE & STONE COMPANY

BESPOKE  
TILE IMPORTS



Tiles & Stone for:

- ◆ Bathrooms & Kitchens
- ◆ Living Areas
- ◆ Conservatories
- ◆ Patios & External Areas
- ◆ Wet Rooms & Spas
- ◆ Swimming Pools
- ◆ All Commercial Applications

- ◆ Local & National Delivery Service
- ◆ Sample Loan Service
- ◆ Free Quotations
- ◆ Free Design Ideas & Planning Advice
- ◆ Trade Enquiries Welcome
- ◆ Wet Room Specialist
- ◆ Full Range of Adhesives & Grouts

## Pensilva Showroom

Open Mon - Thurs 8.30am - 5pm  
Friday 8.30am - 3pm  
Saturday 9.00am - 1pm

## Wadebridge Showroom

Open Mon - Fri 9am - 5pm  
Sat 10am - 3pm



**01579  
362264**

**DISCOUNT TO ALL PUMP READERS**





## Affordable Counselling

**Caring, confidential,  
non-judgemental**

- Increased confidence and self esteem
- Help to cope better at difficult times
- Improved relationships
- Clarify confused thoughts & feelings
- Assertiveness
- Personal insight
- Improved emotional health
- Available for youth and adults

**Isabelle McGarahan BA, PGCE  
Dip in Therapeutic Counselling,  
Member of ACC, DBS cleared  
[www.im-counselling.org](http://www.im-counselling.org) email:  
[isabelle@im-counselling.org](mailto:isabelle@im-counselling.org)  
01579 344090/07857326229**

## PROBLEM?

Folks coming to visit? No space to put them up?

## SOLUTION!

Book them into “**The Birches**”, purpose built holiday bungalow, just two miles from Pensilva.

Sleeps 6: fully equipped: linen & towels provided : dogs welcome: free WiFi.



Call Vanessa on **01579 362377**.  
**10% off tariff with this ad!**

## Jason Sobey

**Plumber and**

**HETAS stove installer**

- \* **Supplier of new & used woodburning stoves & Rayburns.**
- \* **Oftec registered to supply & install oil boilers / Heritage cookers.**
- \* **Anything plumbing!!**
- \* **Tiling, plastering**

**CALL: 01503 220901  
or visit our website  
[www.jasonsobey.plumbing](http://www.jasonsobey.plumbing)**



## NICOLA GREENE

**BSc (hons) Podiatry MChs**

HPC Registered Chiropodist/Podiatrist

**Home Visit Practice treating all  
your foot care needs:**

- Nail Cutting
- Corns and Calluses
- Thickened Nails
- Dry Cracked Skin
- Verrucae
- Foot Pain
- Diabetic Foot Assessments
- Wound Care

**T: 01579 590027**

**T: 01752 291565**

**M: 07786164205**

**E: [nicki\\_greene@yahoo.com](mailto:nicki_greene@yahoo.com)**

# Group Travel

Enterprise Park, Midway Road  
Bodmin PL31 2FQ  
01208 77989 / 01208 72669

## EXCURSIONS

11th APR - WEST SOMERSET RAILWAY & DUNSTER CASTLE

6th MAY - BADMINTON HORSE TRIALS

16th MAY - TAMAR CRUISE & MOUNT EDGECOMBE ESTATE

MAY 29-JUNE 2 - EASTBOURNE (5 days, 4 nights)

15th JUNE - RIVER DART CRUISE & STEAM TRAIN

8th JULY - BARBURY HORSE TRIALS

25th JULY - MYSTERY TOUR

8th AUG - PAIGNTON ZOO

9th AUG - BRITISH FIREWORK CHAMPIONSHIPS

18th AUG - ROSEMOOR GARDEN SHOW

15-17 SEP - BLENHEIM HORSE TRIALS

**16 - 70 SEAT COACHES FOR PRIVATE HIRE, CORPORATE WORK & WEDDINGS  
(CAN INCLUDE STAG & HEN PARTY PACKAGE) AIRPORT BUS TRANSFERS**

FOR BOOKINGS & BROCHURE PLEASE CALL 01208 77989 / 01208 772669

Or Website: [www.grouptravelcoachhire.com](http://www.grouptravelcoachhire.com) Email: [benneymoon@btinternet.com](mailto:benneymoon@btinternet.com)

**INDEPENDENT  
FAMILY  
FUNERAL  
DIRECTORS**



Undertaking your individual  
needs with efficiency,  
compassion and care...

Perfect Choice Prepayment  
Funeral Plans from £3189.00

(Prices correct as at 01.01.2017)

**01579 362358**







# *The* RACEHORSE INN



## *Gastro Pub*

**Head Chef Phillip Bradshaw**

Ray and Flori welcome you to  
the Racehorse INN

A fine food experience in a convivial  
atmosphere

Our superb Sunday lunch is one to be tried

Open Every Day for Lunch and Dinner

[info@racehorseinn.co.uk](mailto:info@racehorseinn.co.uk)  
[www.racehorseinn.co.uk](http://www.racehorseinn.co.uk)

Take-out: Pizzas & Fish'n'Chips now available



North Hill Village, Cornwall, PL15 7PG

01566 786 916

# The Pasty Boys

Unit B, Pensilva industrial estate  
St Ive Road, Pensilva PL14 4RE

## Traditional Cornish Pasties, Pies and Sausage Rolls

Frozen pasties available to order.

Shop now open 10-2 Monday to Saturday

**07437 600605**

[benlangton@thepastyboys.co.uk](mailto:benlangton@thepastyboys.co.uk)

# MARK FITCH CHIMNEY SWEEP

- \* BRUSH & VACUUM
- \* CLEAN, RELIABLE SERVICE
- \* COVERING ALL S.E. CORNWALL
- \* DISCOUNT FOR MULTIPLE CHIMNEYS
- \* COWLS & GUARDS FITTED
- \* STOVES SERVICED



*Call  
Mark on:*

01579 350762  
07773 462643



## Caradon Gas Services Limited

Service Agents for Intergas and ATAG heating range of boilers



[www.intergasheaters.co.uk](http://www.intergasheaters.co.uk)



[www.atagheating.co.uk](http://www.atagheating.co.uk)

**Barry Matthews Eng Tech MIGEM**

Homeleigh, Crow's Nest, Liskeard

Cornwall PL14 5JT

01579 342934



# J. H. Simmons

Painting & Decorating



Interior  
&  
Exterior



**No Job Too Small**

References Available

For more information  
Please call John  
01579 362688

7 East Park, Pensilva



## FERN LODGE

Boarding Kennels & Cattery

- Fully insured and licensed
- Individual care and attention
- All diets cared for
- Early morning walks, late evening Strolls & plenty of playtime
- Quiet rural setting
- Dog Training
- Knowledgeable & friendly staff
- Collection & delivery service.



Come and visit our on site pet shop  
Vast variety of Dog and Cat food  
Top names all at competitive prices.  
FREE delivery service inside the parish!

Tel: 01579 363030  
Golberdon Road, Pensilva

## Manor House Care Home



Specialists in Dementia Care

Permanent, respite and day care available

Please call for further information

**01579 343 534**

Email: [manorhouse.tremar@yahoo.co.uk](mailto:manorhouse.tremar@yahoo.co.uk)

Website: [www.manorhousecare.co.uk](http://www.manorhousecare.co.uk)

**Save Costly Energy!**



**SOLARTEC** Windows & Conservatories Ltd

**'A' Rated WINDOWS & DOORS  
at BEST PRICES EVER!**



Professionally fitted and finished by us with a  
10 year ins. guarantee.  
In all colours



**FACTORY SHOP  
SUPPLY ONLY**

For all your windows, doors, conservatories,  
fascia, trims, guttering and sealants  
**7-10 DAY TURN AROUND ON WINDOWS,  
DOORS and CONSERVATORIES**

**TEL: 01579 343425**

**FAX: 01579 344500**

WEBSITE: [www.solartecwindows.co.uk](http://www.solartecwindows.co.uk)

EMAIL: [sales@solartecwindows.co.uk](mailto:sales@solartecwindows.co.uk)

**KEEPING JOBS IN CORNWALL**





## Martin Hoare – Local, Reliable, Competitive



WHEEL DIGGER FOR HIRE  
ALSO AVAILABLE 'BREAKER'  
AND NEW CONCRETE  
'CRUSHER BUCKET'

ALL AT COMPETITIVE RATES

GROUND WORKS  
DRAINAGE  
NEW DRIVEWAYS  
SEPTIC TANKS &  
'SOAK AWAYS' INSTALLED



LASER LEVEL FOR HIRE  
QUOTES AVAILABLE



Phone 01579 363517

or

Mob 07863 291213



## Steve West Aerial Services



Installations / Repairs to  
TV Aerials, Satellite Dishes  
and Radio

Customised to your requirements

Wireless network &  
Mobile phone extensions

TV mounting on walls  
Help setting up systems  
and demonstrating.

Phone 01726 212761

Mobile 07941 606 183

e-mail [stevewestaerials@uwclub.net](mailto:stevewestaerials@uwclub.net)

## CORNWALL PET SERVICES

HOME BOARDING FOR DOGS  
DOG WALKING  
HOME VISITS

Situation: Between Liskeard and Callington

- Home Boarding for Dogs – safe home environment, off-road walking
- House calls to suit your family pets
- Dog walking
- Fully insured
- Police Checked

**Chris Day**  
**Birchill**  
**Quethiock**  
**Liskeard Cornwall**  
**PL14 3SQ**  
**Tel 01579 340438**

Email – [cornwallpetservices@gmail.com](mailto:cornwallpetservices@gmail.com)  
[www.cornwallpetservices.wix.com](http://www.cornwallpetservices.wix.com)



# Experts in wood, trust us we're good

Decking  
Fencing  
Flooring inc. Oak  
Plywoods + Hardwoods  
Construction graded timber  
Cladding inc. cedar

Large car park  
Full certification FSC/PEFC  
Retail Shop  
Clinton Gates  
Local friendly team  
Large stock displayed



Buy online at  
**[www.bondtimber.co.uk](http://www.bondtimber.co.uk)**  
or call 01503 240 308

Use this discount code for  
all orders: S9347775

Orders can be collected or  
delivered



Bake Sawmill, Trevelfoot, Saltash, Cornwall, PL12 5BW

# **DOG GROOMING**

**40 YEARS EXPERIENCE**



**SMALL and MEDIUM Dogs  
Groomed to Your Request**

**LISKEARD AREA  
Inquiries Welcome**

**Call Patricia: 07517 658862  
TO YOU OR TO ME**



Domestic Electrical  
Property Maintenance  
Interior & Exterior Work  
Carpentry :: Decking  
Kitchens :: Bathrooms  
Wall & Floor Tiling  
General Plumbing

**MCCARTHY PROPERTY MAINTENANCE**

**Electrical Safety  
Register**

incorporating  
ELECTSA + ECA  
Certification Ltd

**HIGHLY REGARDED LOCAL BUILDER  
COMPETITIVELY PRICED  
COVERING THE SOUTH WEST**

Contact Dominic

**07968 599 675**

**01579 362 945**

[info@mccarthypropertymaintenance.co.uk](mailto:info@mccarthypropertymaintenance.co.uk)

[www.mccarthypropertymaintenance.co.uk](http://www.mccarthypropertymaintenance.co.uk)

## **VISIT CALLINGTON**

**A Fair Trade Town**

**Whether you need white goods or carpets for your home,  
or need to mark a special occasion, with a gift or card,  
you can find it in Callington. From a light bite in a tea room or  
Cornish Pasties to take away to dinner in a restaurant.**

**From antiques and curios, bicycles and D.I.Y. to bridal wear.**

**A great choice of independent specialist shops.**

**There is so much more - Visit to see for yourself**

**Callington Traders Association**



**SHOP LOCAL  
AND KEEP CALM**





# Pensilva Stores

**Amazing Value**



- ✓ Fantastic Special Offers every month!!! (See store leaflets)
- ✓ Come and Check out our great deals on Wine, Beer and Spirits
- ✓ Local Produce: Homemade Butter and Clotted Cream, Meat from our local butcher
- ✓ Cornish Fresh Fruit and Vegetables
- ✓ Fresh Bread, Pasties and Cakes
- ✓ Take Away Coffee, tea and hot chocolate
- ✓ Newspapers and Magazines, Greeting Cards
- ✓ Paypoint, Lottery

**\* Free to use ATM \***

**\* Card Payment \***

**Friendly Staff + Service with a Smile !!!**

**Pensilva Stores is a family run business who have been serving local people and visitors for more than 21 years.**

Higher Road, Pensilva, Liskeard, Cornwall PL14 5NQ

Tel: 01579 362547

# MENDOLOGY

## Garage Door Specialist

- ☐ Repairs
- ☐ Servicing
- ☐ Installations

Out of hours service  
call Dave anytime 07974 442645

**MENDOLOGY** DOORS


[www.mendologydoors.co.uk](http://www.mendologydoors.co.uk)

# 01579 363760



# PensilvaCars

01579 363516

- ✓ MOTs Class 4
- ✓ Service
- ✓ Repair
- ✓ Tyres
- ✓ FREE Courtesy Car
- ✓ Car & Van Sales
- ✓ Diagnostics
- ✓ Air Conditioning
- ✓ 

**We have offered a supply, fit & balance of tyre service for 10 years at competitive prices.**

**Most of our tyres can be supplied the same day.**

**LOCAL RECOVERY £45.00**

**[www.pensilvacars.co.uk](http://www.pensilvacars.co.uk)**

**[pensilvacars@hotmail.co.uk](mailto:pensilvacars@hotmail.co.uk)**

We can service and repair your car to manufacturer specification, keeping your dealer warranty without main dealer expense.





# **KEITH RICHARDS**

## **Motor Body Repair Specialists**

A family run business with fully equipped & maintained workshops & a focus on  
Customer Care

- ♦ **Motor Body Repair Specialist**
- ♦ **Mechanical Repairs**
- ♦ **Servicing to All Makes & Models**
- ♦ **Computer 4 Wheel Alignment**
- ♦ **24 Hour Recovery Service**
- ♦ **Renovations & Re-sprays**
- ♦ **Member of RMI (Retail Motor Industry Federation)**
- ♦ **Latest Diagnostics (including specialists for VW, Audi, Seat, Skoda & Vauxhall)**

With over 30 years' experience we aim to provide you with:- Value for Money -  
Friendly Service - Professional Approach - Expert Advice that you Can Trust  
(Visit our website for more details)

Pensilva Industrial Estate, St Ive Road, Pensilva, Liskeard, Cornwall PL14 5RE

Tel: 01579 362593

Email: [keith@keithrichardsmotorbody.co.uk](mailto:keith@keithrichardsmotorbody.co.uk)

Fax: 01579 363194

Website: [www.keithrichardsmotorbody.co.uk](http://www.keithrichardsmotorbody.co.uk)

Wm. Newham & Sons Est. 1835

Proprietor Robbie Savill AWCB

## **CHIMNEY SWEEPS & BLACKSMITHS**



**CHIMNEY SWEEPING**

**BIRD GUARDS, COWLS & POTS FITTED**

**CCTV INSPECTIONS & SURVEYS**

**STACK REPAIRS & REBUILDS**

**RIGID STEEL SYSTEMS ERECTED**

**STAINLESS STEEL and PUMPED CONCRETE  
CHIMNEY LINING**

**STOVES SUPPLIED, INSTALLED & REPAIRED**

**FIREPLACE ALTERATIONS & RENOVATIONS**

**FULL RANGE OF FIREPLACE FURNITURE  
made to order**

**01579 347777**

**need somewhere to stay ?  
between homes ?  
family/friends visiting ?**



**ideal for Pensilva  
& St.Ive**

**please call Jackie on  
01579 362216**

# **J.J.CHILD**

**PLUMBING AND HEATING ENGINEER**

**OIL AND GAS APPLIANCE**

**SERVICE , REPAIR AND BREAKDOWNS**

**LANDLORD'S CERTIFICATES**

**OVER 25 YEARS EXPERIENCE**

**CALL JOHN ON 01579 362336**

**MOBILE 07837921086**



**502322**



# Bargain Corner Free Ads up to £50

Ads are free for items up to £50. £5 charge for items over £50. Please ring the Parish Office on **01579 363096** or leave a note at Millennium House reception or email **parishpump@btconnect.com**.

**\*\*\*Please let us know when your item has sold\*\*\***

3 ft **Pine Bed** complete with fire-resistant mattress. Excellent condition. Hardly used. Buyer collects. **£30 ono.**  
**01579 362753**

Old G plan **three piece suite** & footstool. Fabric faded but v comfortable & sound.  
**01579 363609**

**Brand new tyre.** Goodyear 205/55R16 on alloy wheel. Kept as spare tyre for Touran, never used. Selling due to change of car. Now **£20.** **01579 641431. St Ive**

Samsung CLX3185 Colour Multi-Function **Laser Printer/Scanner/Copier** including 4 New Boxed Toner Cartridges. Hardly ever used. **£50**  
Handy small Impact **Garden Shredder**  
As new **£40**  
**Tel : 07891 849603**

**3 piece suite.** Two-seater sofa plus two chairs. **£50 - 01579 363712**

**Printer** Canon Pixma MG315D. Black colour, Exc condition. **£40 - 01579 362473**

White wooden double bed frame 'Avignon' range from house of home **£50 ono** reason for sale - moving  
White 3/4 size dishwasher, Bosch, good working order **£50 ono**  
**07724 111132**

**Tiger rug** 31" x 58" - **£5**  
**Small jug kettle** - **£1**  
**Paper shredder** - **£5**  
**01579 362034**

Samsung **computer monitor** 21 inch. 4 months old. Analog. **£45.** **01579 362417**

**Half Brogues** black size 10. Cost £140 new; **now £50.**  
Gents classic black **leather jacket** size 46. **£50.**  
**07789 861546**

Modern steel frame **single beds** (pair). Aluminium effect. Complete with new memory foam mattresses. **£50 each.**  
**01579 362293**

Pair of traditional, pine **bedside cabinets.** 27"h, 13"w, 9"d, **£25.**  
**6 dumbbell tree set.** Various sizes. As new. **£10**  
**07891 849603**

**Shires Show jacket.** Black with purple Collar. Only been worn a couple of times. Ex. Con. **£25.**  
**01579 343992 or 07810 178802**

Wicker, glass top **coffee table** with shelf. L 39", W 27", H 19". VGC. Buyer collects. **£30.** **01579 347474**

**Homedics** Back Massager. Full lumbar or Lower Lumbar only options. Plus variable intensity. Fits any armchair. Can be seen working. Only used twice. Great Xmas present. **£50 ono.**  
**07973 510693 St Ive.**

Vintage **display unit** on casters. Colour tan. **£50.**  
**Tel: 07855 016596 Pensilva area**



**WANTED:** At least 10 full-size good condition **railway sleepers**.

**WANTED:** A small piece of non-development, flat accessible **land** within 5 miles of St Ive. Anything considered.

**Tel 01579 - 384658.**

Little Tikes **Wendy House** -a bit faded with the weather but perfectly sound **£25**.

Proline **fridge/freezer** in good condition, 4 years old. **£50**.

**Tel. 01579 363609.**

**Pressure Washer £40**

**Leaf blower / vacuum £30**

Peugeot 407SW **roof bars £40**

**01579 362064**

**Saddle**, 18" approx (Keith Bryan). About medium width. Suit lightweight cob.

**£200 ono. 01579 345863**

Very large, Swiss, circular, **stainless steel barbeque**. Little used. With 45kg charcoal. **£150. 01579 363997**

E1system **desktop PC** Intel pentium dual core processor-1GB memory-250GB hard drive-Windows Vista Home Premium. Full spec available. **£50**. In working order.

**LCD monitor** 19 inch c/w Logitech webcam, wireless keyboard plus mouse. **£25**. All in working order.

Space required reason for sale. Pensilva village. **01579 362950**

Lindam Safe & Secure metal **playpen £40**  
**ono 01579 363791**

Thick **Blue Slate Fireplace Hearth Stone** 28" x 28" x 1½". **£50**. No offers.

**01579 384658**

EV7000 ELITE **Treadmill**, no incline, mains operated. Only used a dozen times. Very good condition. Buyer collects please (St Ive). **£150**.

**01579 382304.**

**Blind for VELUX® Window**

Blind colour Acacia Pebble (Cream)

Model Code:CGL Size Code:M08

Frame colour: silver

Size: Width 613mm, Drop 1160mm

Supplied in original unopened packaging:

**£21.50 ono 01579 363497**

**Greenhouse**, 8'x6' Poly Carb,  
**£30** (buyer to dismantle)

**01579 383137**

Ladies Genuine Leather **Motorbike Jacket**  
**- £20 ono**

Higher Tremar **01579 346986**

**Leopard Coat**, faux fur. Calf length, cowl collar, matching hat. Medium size, 38"/40" bust. **£30 - 01579 345783**

Blue-grey **ladies bike**, Falcon Safari, Very good condition. Shimano brakes, front and bike light. Clip-in water bottle included. **£50** Please contact Alison on **01579 383361** In Callington, can deliver.

**Please let us know when your item has sold.**

**By email to [parishpump@btconnect.com](mailto:parishpump@btconnect.com)**

**Or leave a note at Millennium House, Pensilva.**

**Thanks!**

## What's on in St Ive Parish ?

WHAT'S ON	WHEN	CONTACT DETAILS
<b>MILLENNIUM HOUSE</b>		
Aikido	Thursday 7:00pm	
Antique & Collectors Fair	4th Sunday Monthly 10:00 - 4:00	
Badminton Club	Mon & Tues 7:30pm. Fr. 8.00pm	01579 363594 (Carol & Nigel)
Book Exchange	Daily	01579 363096
Breath of Air	Monday 1.00pm - 3.00pm	01579 345989 Pauline
Country Dancing	Alternate Thursdays 8.00 - 10.00pm	01579 382402 Ray Buckingham
Farmers Market	2nd Sat Monthly 9:30 - 12:30	01579 363096
Fitness Pilates	Monday 9:30 - 10:30am	07850 473428 (Dianne)
Ladies Netball	Friday 09:15 - 10:15am	07985 387472
Pensioners Lunches	Tuesday 12:00 - 2:00pm	01579 363096
Short Mat Bowls	Thursday 7:00pm	01579 208528
Village History Group	Last Monday Monthly 7:30pm	01579 208754 (Angus)
Wildlife Group	Quarterly	01579 362539 ( Hilary)
Woman's Institute	2nd Wed Monthly 7:15pm	01579 363718 (Frances Tucker)
Yoga	Wednesday 7:00pm	01579 344464
Zumba Fitness Classes	Wednesday 7:00 - 8:00pm	01579 363096 (Millennium House)
<b>PENSILVA VILLAGE HALL</b>		
Brownies	Monday 4:00 - 6:00pm	01579 362239 Martha Oliver
Girl Guides	Monday 6:30 - 8:00pm	01579 363212 Jackie Browning
Pensilva Wednesday Club	Wednesday 2:30pm	01579 363221 Mrs Jean Conner
Pensilva Snooker Club	Wed 7:00pm + Various times	01579 362091 Phillip Bond
MIMS (light exercise)	Friday 1.00 - 3.00pm	01579 343702 (Mike)
Rainbows	Friday 4:00 - 5:00pm	01579 362091 Lynne Bond
Rangers	For Info	01579 362982 Kirsty Oliver
<b>PENSILVA PRE-SCHOOL</b>		
Pensilva Pre-School	Monday-Fridays 9:00 - 3:15 (session times available)	07890 023924 Mrs Suzanne Kinsman (Manager)
Tiny Tots Toddler group	Friday 9:15 - 11:15am	07890 023924 Mrs Suzanne Kinsman (Manager)

## What's on in St Ive ?

### ST IVE INSTITUTE

Art & Craft Group	Tuesday 1:00 - 5:00pm	01579 362216 (Jackie)
Coffee Morning	Wednesday 10:30 - 12:00	
Gardening Club	1st Monday monthly 7:30pm	01579 382762
Post Office	Wednesday 10:30 - 11:30	
St Ive Snooker Club	Monday & Thursday 7:00pm	01579 382315 R Bunkum

**St Ive Institute available for hire. £3.50 per hour.** This includes the use of the kitchen & electric (excluding wall heaters which operate on a £1 coin meter)

**Contact Jill Ede 01579 384095**

Hall meetings will now be held bi-monthly on the second Tuesday of the month

### ST IVE & DISTRICT GARDENING ASSOCIATION

Meetings in St Ive Village Hall 1st Monday in the month at 7.30pm

**Monday 6<sup>th</sup> March** **7pm Annual General Meeting** then at **7:30pm Carol Richards** will show us how to have **Fun with Fuscias.**

**Monday 3<sup>rd</sup> April** A visit to **The Lodge**, Fletchers Bridge, Bodmin, PL30 4AN Assemble in St Ive car park to leave at 6.00 pm

**Monday 8<sup>th</sup> May** A visit to **Calamazag Nursery**, St Martin's Road, Looe, PL13 1NX. Assemble St Ive car park. Leave at 7.00 pm

*Visitors and new members are always welcome to join us.*

### ART AND CRAFT GROUP

We are a small friendly informal group who enjoy doing art and craft. If you paint or do any type of craftwork and would like to join us we'd love to welcome you.

There is no 'teaching' but help/advice is always forthcoming!

We meet at St. Ive Institute Hall from 1.00pm to 5.00pm Tuesday afternoons.

Only £3.00 for the afternoon plus 50p for tea/coffee and biccies.

If you are interested please give Jackie a call on **01579 362216.**

We look forward to meeting you.



# Pensilva Post Office

Located through the Café on the 1<sup>st</sup> floor of Millennium House



## Opening times:

Tuesday	-	9am to 1pm
Wednesday	-	9am to 12 noon
Friday	-	9am to 12 noon



## **MILLENNIUM HOUSE**

### **THE MEL**

**Licensed Bar  
Free House**

#### **Opening Hours**

Mon - Thu	-	5 pm to 11 pm
Fridays	-	3 pm to 11 pm
Saturday	-	12 noon to 11 pm
Sunday	-	12 noon to 11 pm

Millennium House 01579 363096

