

THE PARISH PUMP



October 2014
Edition 395



The Newsletter for the Parish of St Ives



St Ives youngsters unhappy about the state of their playground. A donation from the solar farm may help to cheer them up!

See item on page 5 and find [St-Ives-Community-Park-Project](#) on Facebook

Disclaimer

The articles appearing in this magazine do not necessarily reflect the views of the Parish Council nor of the Parish Pump Editor.

Parish Councillors Telephone List

Peter Dipper (Chair)	01579 362315
Martin Corney (Vice Chair)	01579 382450
Roger Bennison	01579 363967
Pam Carter	01579 362640
John Kendrick-Crawshaw	07929 496795
Alan Moss	01579 362064
Keith Mutton	01579 382334
Alan Neal	01579 362478
Linda Olver	01579 383137
Charles Wadge	01579 363933
Stephanie McWilliam (Cornwall Councillor)	01579 362037

Meetings of St Ive Parish Council

2nd Monday monthly: Parish Council Meeting, alternating between St Ive Village Hall and Millennium House (please refer to notice boards for the agenda showing start time and venue each month). Any changes to the regular dates (i.e. Bank Holidays etc.) will be publicised accordingly.

4th Tuesday Monthly: Parish Council Planning Committee Meeting, 7 pm at Millennium House Pensilva, followed by the Parish Council Finance & Administration Committee Meeting commencing at 7.30 in the same venue.

Date of Next Parish Council Meeting:

Monday October 13th 2014 at Millennium House Pensilva at 7.30pm.



Devon & Cornwall Police
Building safer communities together



101

Minicom 18001 101

Police Community Officers can be contacted on 01579 325454 at any time

PC Garth Hatt garth.hatt@devonandcornwall.pnn.police.uk

PCSO Bob Anslow robert.anslow2@devonandcornwall.pnn.police.uk

² PCSO Becky Steed rebecca.steed@devonandcornwall.pnn.police.uk

Contact details for St. Ive Parish Council and for Millennium House

Address for correspondence: Millennium House, Century Square, Pensilva PL14 5NF

General Parish matters should be raised initially with the Parish Clerk (Angela Fisher) who will present them to the Parish Council.

Telephone: 01579 363096, email: stiveparish@btconnect.com

For accounts matters for the Parish and for Millennium House please contact the Finance Clerk: 01579 329002, email: millenniumhouseadmin@btconnect.com

The Millennium House General Manager (Sarah Hylands-Thorpe) can be reached on: 01579 363096, email: millenniumhouse@btconnect.com

Millennium House enquiries and reservations: 01579 363096
email: millenniumhouse@btconnect.com.

On the web: Millennium House Website: www.cornwallvenue.com

Parish website: st-ive-parishcouncil.gov.uk Facebook: facebook.com/stiveparishcouncil

Parish Pump Information and Contact Details

To contact the editor please email: parishpump@btconnect.com
or phone the Parish office: **01579 363096**.

Hardcopy submissions by post or by hand to the Parish office, Millennium House.

Softcopy submissions: By email to the editor in MS Word, MS Publisher, pdf, Tiff or jpeg. Please use A4 pages and minimum 16 point font as the Pump is initially produced in A4 size and reduced to an A5 booklet at the printing stage. If you would like a template, please contact the editor.

Current Advertising Prices including VAT at 20%

Per issue: Quarter Page £7.50 Half Page £15.00 Full Page £25.00

10% discount for 12 months paid in advance.

Bargain Corner free ads by email to the editor or drop off at the Parish Office.

Deadline for the Parish Pump is STRICTLY 15th of every month

THE MEL BAR

Come relax and wind down
after work

At the Mel Bar, Millennium House

HAPPY HOUR

From opening time till 7pm Weekdays
50p off all alcoholic drinks.



From the Editor

The skittles season is finally under way and for about 100 or so people of our Parish that signals the start of another episode of obsession with gutsers, spares, floppers and the like. So, if you come across two or more people deep in conversation about the manifest injustice of Life and the Universe in general, don't be alarmed, they're probably just skittlers.

Of course there's much more going on, not just skittles, and you can read all about it in this month's edition. If you are involved in a village group or activity that is not reported here then let me know and we'll try to find some space.

Enjoy the last of the good weather!

All the best - Joe

PLANNING - October 2014

Planning Applications

PA14/ 07851	First floor extension and changes to living room and entrance porch (resubmission of PA14/05096) Gang Farm Bungalow, St Ive, Liskeard, PL14 3NB	Mr & Mrs K Hoare
PA14/ 07892	Listed building consent to replace all windows on property like-for-like—Cornelly, St Ive, Liskeard	Mr Corney

Decision Notices

PA14/ 05209	Construction of new dwelling including: Demolition of existing garage to Couchs Lodge, new vehicle and pedestrian access, 2 parking spaces and turning area, external landscaping, new boundary fencing and walls (outline application with all matters reserved).- Mr M Briggs	Refused
PA14/ 05664	Stationing of container for storage of maintenance equipment and spare parts for use in association with existing solar farm permitted under PA12/0666, together with erection of 2m high Palladin Security fencing Ford Farm, St Ive, PL14 3LX	Approved
PA14/ 06218 4	Conversion of redundant piggery to two holiday lets – Fairview, Bicton Road, St Ive, PL14 5RF, Mr M Even	Refused

Millennium House Opening Hours

Reception

9am till 2.30pm Monday to Friday

Cafe

9am till 2pm Monday

11am till 2pm Tuesday to Friday

Bar

5pm till 11pm Monday to Thursday

4pm till 11pm Friday

12am till 11pm Saturday and Sunday

If a member of staff is not available please leave a message in our **letter box** at the front of the building or on our answer phone by calling **01579 363096**.

St Ive Community Park Project

Saturday 4th October from 2pm

Fun Day for all the Family

**BBQ, Bouncy Castle,
Cakes, Refreshments,
Lucky Dip, Raffle,
Games.**



**Please come along and have your say on
how we can improve the community park!**

The following courses are being offered By Cornwall Council at Millennium House Pensilva, starting Sep/Oct 2014. Anybody interested should contact Cornwall Adult Learning on 01579 345384 or go to www.cornwall.gov.uk/adultlearning. The courses will only run if enough people enrol, so don't delay!

Cornwall Council Adult Learning Courses at Millennium House Pensilva 2014-15

Tutor	Course Starts	Day / Time	Weeks	Price (Concessions)
Certificate in Fashion - Tailoring City and Guilds - Level 2				
Pauline Millar	26/09/14	FRI 9:30 to 12:30	43	£365 (£0)
Landscapes in Stitch				
Lisa Hartill	30/09/14	TUE 10.00 to 2:30	10	£120 (£70)
Dynamic Still Life - oils and acrylics. An Introduction				
Colin Pethick	1/10/14	WED 2.00pm	10	£137 (£77)
Expressive Landscapes - oils and acrylics				
Colin Pethick	1/10/14	WED 10.00 - 1.00	10	£137 (£77)
Life Drawing - An Introduction				
Colin Pethick	2/10/14	THU 10.00 to 1.00	10	£152 (£92)
Portraiture from Life - oils and acrylics - Part 1				
Colin Pethick	2/10/14	THU 2.00 - 5.00	10	£147 (£87)
Garden Design				
Lucilla Spencer-Phillips	3/10/14	FRI 9.30 - 12.30	8	£110 (£62.60)
Textiles - Making 3D Textile Items				
Wendy Stedman	3/10/14	FRI 9.30 - 12.30	10	£152 (£92)

For more information go to
www.cornwall.gov.uk/adultlearning
 Or call Liskeard 01579 345384

Join John?

Want a free sandwich and refreshment
for your time and efforts?

Volunteering Opportunities at Millennium House

Gardening, Litter Picking, Reception, Painting, Cleaning,
Web Site Support

For more information please just pop in for a chat with

Sarah Hylands-Thorpe, email:

millenniumhouse@btconnect.com or tel: **01579 363 096**

Join John & make a difference

Pensilva Post Office



Located through the Café on the 1st floor of Millennium House

the opening times are:

Tuesday - **9am to 1pm**
Wednesday - **9m to 12 noon**
Friday - **9am to 12 noon**

Position Vacant at Millennium House

General Assistant - Main Duties: - Bar, Catering and Reception.

- Must be well presented, polite and have a sense of humour.
- A Personal Licence is an advantage but not essential.
- You should be capable of working both on your own and with other members of staff.
- This is an extremely varied position so flexibility is essential, helping with holiday cover and functions.

Please note you must have previous Bar experience to apply for this post.

Immediate start, £6.50p/hr, min.10 hrs/week, could well be more.

To apply please send CV and covering letter to:

Sarah Hylands-Thorpe, General Manager. Millennium House, Century Square, Princes Road, Pensilva. Cornwall. PL14 5NF or email millenniumhouse@btconnect.com

Funding available for local community projects.

Local groups in need of funding may be interested to know that the High Down Wind Turbine project are making funds available for projects in our Parish. Grants from £250 to £3000. These are the criteria:

The High Down Wind Power Community Fund shall exist for the promotion of projects, with priority given to the Parish of St Ive, with potential for the improvement of environmental education in the face of climate change, highlighting the need for sustainability, for renewable energy and energy efficiency, or which address problems of rural isolation, especially for younger members of the community or projects which otherwise address local needs.

Anybody interested please contact the parish clerk at:

stiveparish@btconnect.com

From Cllr Steph McWilliam – October 2014

Well, now the budget discussions are underway in earnest. Due to the reduction in central government funding, Cornwall Council has to cut spending by about 30% over the next four years. This is a huge amount and every service will be affected. However, some services are being protected as much as possible and others will be harder hit or even disappear. Full details of the draft budget are publicly available and there will be meetings held right across Cornwall where you can hear more, although by the time you read this, some will have already taken place. The majority of the budget is committed to the provision of statutory services so options are limited.

I am pleased to see that other councillors and the cabinet have come up with the same priority areas as me. Support for the vulnerable (including respite for carers), highways maintenance and rural bus services are high on this list. Cornwall Council is a large and complex organisation but the budget cuts are forcing us to look at what we do and how we do it. Overall, though I do still have some concerns which I will be raising, there are some really good ideas and our staff deserve credit for the initiative they are showing in coming up with these suggestions. It is always easy to criticise and focus on the negatives but we must also be willing to recognise the good work being done. I am also pleased that this is a four year plan. There will have to be some modifications and amendments in some areas along the way but it will provide for better planning of services and changes.

More locally, the Neighbourhood Development Plan is making good progress, largely due to the number of you who completed the survey. Thank you so much for this. It really will help to shape the future of the parish the way you want it to be.

A project to provide St Ive young people with a better equipped play area is also off to a good start. Thank you to everyone who is supporting that and I hope I can also play a small part.

Before too long you are probably going to see work underway to repair the speed cushions in Higher Road. I have warned CORMAC that this is likely to be very unpopular, given the number of people who just want them removed. Unfortunately it isn't that simple. Your parish council is as aware as I am that these have been unwelcome since they were put in but there is no funding available to have them removed. It becomes complicated because of the need for traffic orders, a scheme design, not fitting with wider policy etc etc. Unless or until we can find a way to fund such a scheme, Cornwall Council is required to keep them in good repair. Rest assured that when you are quietly fuming about the money being spent on this work, I will be too and if I can find a solution, I will. In the meantime, please don't take it out on the CORMAC guys doing their job. It isn't their fault!

Thank you.



The latest from your Parish Councillor—Martin Corney

The St Ive Community Park Project is up and running. We have loads of pictures of play equipment on our Facebook page. This is an ideal place for people to put ideas and photos of what people want in the new play area. We are throwing a Fun Day on Saturday 4th October at 2pm to raise money and awareness. Also children will be able to vote on which equipment they like best.

The Neighbourhood Development Plan Survey went very well with our 23% response rate beating neighbouring St Cleer's 20%. Well done everyone. The report is available on the parish website under NDP. To reassure the people of St Ive who worried that the larger population of Pensilva would unfairly say build everything in St Ive, if anything it was the other way round. I hope that hasn't spoiled the story, by telling how it ends!

This month's Millennium House Forum meeting on Wednesday 8th is going to be the most important one yet, with a draft business plan to consider. Don't forget that you can also have your say on the parish website or parish Facebook page.

The youth club Café is now opening on a Tuesday evening as well as Thursday and Friday. This fits in with having to move the Friday Flipdance to Tuesdays during term time when the Friday Club have the sports hall. Don't forget the parish website st-ive-parishcouncil.gov.uk with council meeting agendas and minutes; also downloadable copies of the Parish Pump. For those of you who do Facebook, our St Ive Parish Council page is still being updated with parish news. Phone me, email me on martin.corney@btinternet.com or "martin corney blog st ive" in search engines will find my blogs for you to comment on these articles and other gems.

The new head of Quethiock School introduces herself.

My name is Clare Collins and I am delighted to have been seconded to Quethiock Primary School as Head of Teaching and Learning. I live in Liskeard with my husband and family. I had been actively looking to move to a small school to broaden my teaching experience and I am really looking forward to taking up my new position. I hope to build positive partnerships with children, staff, parents, the church and wider community in order to provide an exciting environment and curriculum where our children can achieve¹⁰ their dreams!

Coffee and Cake Morning

in aid St John's Church, Pensilva.



Saturday 4th October 10am to 12.

**At the home of Ivor and Jean Hoare
4 Slade Park Cottages, Slade Park Road, Pensilva.**

**Bring and buy and raffle. Coffee and cakes £2.00.
All welcome**

**2ND SAT MONTHLY
9.30 - 12.30**

PENSILVA FARMERS MARKET

FRESH LOCAL PRODUCE

- Meat
- Bakery
- Vegetables

CRAFTS

- Quilts
- Cushions
- Embroidery
- Greeting Cards



**NEXT MARKET
SAT 11th October 2014**

Pensilva W.I. report

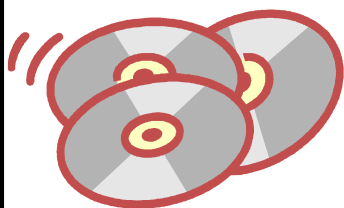
At the meeting on 10th September, Matt Lewis, Lead Ranger, from Lanhydrock House, talked to us about the work being done on the grounds. The National Trust, although still interested in their many historic houses, want to encourage the general public to be able to enjoy the grounds as well. Lanhydrock has about 1000 acres comprising of woodland, parkland, allotments and has the River Fowey running through it. They have opened up many paths by taking away the vegetation overgrowing the original paths and opening many more. Trees and bushes have been planted in the fields bordering the A30 to deaden the constant noise from the traffic. The recent ploughing of some fields has provide the local people with allotments, 90 in all. Lanhydrock borders on the edge of Cardinham Woods and in cooperation with them they have opened many cycle tracks for all to enjoy. In the woodlands, some of the trees are hundreds of years old and some are a thousand years old. When a tree dies they leave most of it for the many insects that live in it. Trees are covered in lichen and there are over a hundred species at Lanhydrock. In the 13/14 winter storms they lost many trees, many of them mature trees. Beech avenue lost over 300 trees in the storms. All the trees are regularly inspected for diseases and any that have a disease are often felled.

The talk from Matt was very interesting and the slides were very good. Our meeting in August was a social evening with a trip to Ken-Caro's garden and a bring and share supper at Jean's and a good gossip and a laugh.

Our next meeting in October is a Harvest Supper and all are welcome to join us for supper and purchase the produce auctioned by Ivor.

Knit and Natter is on 30th September in the Millennium Centre. This is not just for W.I. Members, anyone can come along.

Flower of the month was won by Cherry Woodhouse, 2nd Ann Robinson, 3rd. Gill Pascoe.



ANY UNWANTED DVD'S, CD'S AND GAMES

**WE CAN TURN THEM INTO CASH FOR
PENSILVA PRIMARY SCHOOL FUNDS.
PLEASE GIVE ANY UNWANTED ITEMS INTO SCHOOL
RECEPTION OR MILLENNIUM HOUSE RECEPTION.**

FOR MORE INFORMATION PLEASE CONTACT

PENSILVA PRIMARY SCHOOL ON 01579 362546

Pensilva F.C. - October 2014

<u>First Team Fixtures</u>				<u>Second Team Fixtures</u>		
<u>Date</u>	<u>H/A</u>	<u>Versus</u>	<u>K/O</u>	<u>H/A</u>	<u>Versus</u>	<u>K/O</u>
Sat 4				H	Kilkhampton	14:30
Sat 11				H	Packhorse (Cup)	14:00
Sat 18	A	Millbrook (Cup)	14:30			
Sat 25	A	Bodmin Town	14:30	A	Week St Mary	14:30
Sun 26				A	Ashwater or Kilkhampton (Cup)	14:30
<u>1st Team Results and scoreres</u>				<u>Second Team Results</u>		
Home to Nanpean W 3-0. S Rogers (3)				Away to St Dennis L 2-1		
Away to Camelford L 5-2. D Cole, J Filbey				Home to Real Saltash D 3-3		
Home to Mevagissey D 2-2 C Wilson, J Filbey				Home to St Mawgan L 2-4		
Home to St Stephens Borough W 6-0. J Filbey (4), R Hooper, S Rogers				Home to St Teath D 3-3		
Away to Millbrook L 1-0				H to Mevagissey (Cup) W 4-3		
Away to St Blazey L 3-1. N Kennedy,						
Away to Torpoint L 5-0 (Cup)						
Away to Lanreath D 1-1, S. Rogers						
Away to Lanreath L 2-1 (Cup), S. Rogers						



**You can now donate locally in St Johns Church
Pensilva. Thursdays 10.00am - 11.15**

Dry or tinned food only, please

Please note new collection times



VOLUNTEERS FOR YOUTH GROUP

Parents – are your children at a loose end of an evening?

We need volunteers to run more evening sessions at our Youth
Café in Millennium House.

We have a successful Thursday evening session from 7 to 9 pm and would like to run further evenings, but we need volunteers willing to help with the teenagers.

If you can commit regularly to one evening a week and would like to know more please contact the Parish Clerk on 01579 363096 or stiveparish@btconnect.com

Millennium House Forum – 4th meeting, September 10, 2014

At the September meeting the decision was taken to move to the next stage. We've had ample opportunity now to discuss ideas and it's time to pull everything together into a coherent business plan. So the upcoming meetings of the Events subgroup and the Finance subgroup will be encouraged to come up with concrete proposals that can be included in a draft business plan that will be presented to the full Forum meeting on 8th October. Anybody or any group wanting to have a say at this point should make sure they attend or are represented at these meetings. We will then have a month to refine the business plan in line with the feedback from the October meeting. At the same time we will be contacting all MH user groups to encourage them to come to the November meeting, where we hope to get the plan approved and formally endorsed by as many of these groups as possible. The final stage of our work will then be to present the plan to the Parish Council for them to implement it if they see fit.

We hope to make contact with Lanreath Village Hall to see how they manage things there.

Events Group meeting Mon. 27th September, 7:30pm at Millennium House
Finance Group meeting Thu. 2nd October, 7:30pm at Millennium House
Full Forum meeting Wed 8th October, 7:30pm in Millennium House

BUMPER HARVESTS of potatoes, sweetcorn, apples, tomatoes, runner and French beans have made this summer a great season for us. Our veg boxes and fruit bags are overflowing with gorgeous-ness and look really lush. Laura from Tregillis Organic Farm brought us butternut squashes one week that were so big we had to cut them in half just to get them in the boxes. We've been using our seconds to make the volunteer lunches; the tomato and pepper soup was just fab.

Sadly, the plenty is beginning to slow down now and we'll be taking out exhausted plants to make way for autumn and winter crops.

GROWING I am sitting down this week with Laura to plan our winter crops, who's going to grow what and maybe trial some things we haven't grown before. Emma and I have started sowing autumn salads and oriental greens in the tunnel: less than a week later, their heads are up, as if by magic.

VOLUNTEERS we are having an influx of new volunteers as the young ones go back to school and the Parish Pump has been really helpful for pointing new village residents in our direction. Volunteering here is a great way to meet new people and get healthy too. Do come along and meet us between 10-2 any Wednesday.

DONATIONS AND AN APPEAL many thanks to all the people who pop useful things like compost bins and seep-hose over the gate: it all gets used by Martin to improve the site and make our growing easier. We need more seep (leaky) hose to improve our irrigation systems, so if you have some in your shed doing nothing, please fling it over the gate. We also need topsoil for new beds we're developing this winter to increase our growing area.

VEG BOX SCHEME. To enjoy fabulous fresh local fruit and veg, order your veg box now. Box Prices are:

£7.50 for 1 /2 people, £10 for 3/ 4 people, £15 large family box and the very popular £5 fruit bag.

We also supply organic wholefoods and have a stall at the monthly Farmers Market.

The Growing Project CIC is a Community Interest Company producing organic fruit and vegetables. We have opened the growing space at Kenwyn to the community and welcome volunteers for all sorts of jobs.

Contact Ruth Wilson 01579 363684/ 07853 244934

thegrowingproject@orangehome.co.uk

www.thegrowingproject.org.uk

PENSILVA W.I. HORTICULTURAL SHOW

Ladies of the village WI organised their Horticultural Show held on Saturday, 13th September, which was declared open by County Councillor, Stephanie McWilliam.

Villagers and visitors alike enjoyed viewing a variety of handicrafts, selection of vegetables, pot plants, flowers, diverse photographs and a delightful children's section.

Cream teas were served throughout the afternoon and there were many lucky raffle winners.

CUPS & AWARDS:

Most Points in Vegetables/Pensilva WI Committee Cup: Mr. H. Hollingsworth.

Pot Plants/Tessa Cup: Mrs. F. Richards.

Flowers/F. French-Blake Cup: Mrs. J. Hoare.

Domestic/Albert Moore Cup: Mrs. J. Ludlow-Ockelford.

Handicraft/Nicholls Cup: Mrs. G. Bunkham.

Photography-Best Photo/Les Morcom Cup: Mr. P. Browning.

Photography-Most Points/Barnard Cup: Mr. A. Collins.

Photography-Under 15 Years/Shield: William Hicks.

Children-Under 7 Years/Miss Glennon Cup: Harry Mitchell.

Children-8-11 Years/Parfitt Cup: Tom Sichel.

Children-12-15 Years/Harry Cup: Victoria Sichel.

Overall Winner-Most Points (omitting vegetables)/Pensilva WI Committee Cup: Mrs. J. Ludlow-Ockelford.

Most Points Gained in the Vegetable Section/Dr. Tregarthen Cup:
Mr. H. Hollingsworth.

Most Outstanding Exhibit in Pot Plants/Smerdon Trowel: Mr. P. Morse.

Opener's Choice/Bennett Cup: Mrs. D. Upton.

Judges' Choice/Coombes Cup: Mr. P. Morse.

WI Members' Photography/Members' Memorial Shield: Mrs. V. Dawe.

Annual Craft Fair

St Ive Church

Sat 11th October 10am-4pm

Lots of Crafts on display including:-

Jams & Pickles, Local Produce,
Wood Turning, Gifts, Cards etc

Home Cooked Refreshments

Local Made Pasties

Cream Teas

Ample Parking in Car Park Behind the Church

For more information call 01579 382237

Community Lunch



Sunday 5th October

12pm for 12.30pm

3 Course Lunch

Inclusive of Tea and Coffee

Adults £7.95p

Children (*Under 12*) £4.95p

Bookings required

Call Graham or Charmayne

01579 363096



Millennium House
Century Square
Princess Road
Pensilva
Nr Liskeard
Cornwall
PL14 5NF

At the October meeting of the **Pensilva Memory Café** in St. John's Church on Thursday 23rd from 2pm-4pm we will have the opportunity of learning a bit more about really practical first aid. And if you think first aid is boring you haven't met Charlet!!

So if your memory is less good than it used to be, or you are caring for someone with memory problems, please do come and join us. More info from Carolyn on 01579 362698.



Phyllis's Coffee Morning

Millennium House Café

Thursday morning

10:30am - 12:30pm

Come along for a chat with friends and enjoy a cup of tea or coffee with a cake for just £2.50

Supporting Guiding & Scouting Activities in Pensilva

200 CLUB Draw Results for August 2014

1st No. 158 Mrs F Gilbert	2nd No. 94 Mr G Coombes	3rd No. 10 Mrs F Tucker
--------------------------------------	------------------------------------	------------------------------------

Thank you for your support

Upcoming Quizzes in Millennium House



Next Quiz

**Saturday November 1st
7:30pm**

Also (advance notice):
Saturday December 13th

**Organised by and raising funds
for *All Being Well***



PENSILVA WILDLIFE GROUP



Are you interested in Wildlife and/or Photography?

Why not join us for a wildlife photography workshop.

Sat 18th October 10.00am. Pensilva Village Hall

Local wildlife photographer David Chapman will be giving a talk on his photography of Cornwall followed by a trip to Golitha Falls (car share) where you will be given hints and tips on wildlife photography.

Booking essential as places are limited . £5 per person.

Book early to avoid disappointment



More details & bookings:- Tel. Sue 01579 362905 or Hilary 01579 362539

Please bring a camera and tripod if you have one.

Wear suitable clothing and footwear and bring a packed lunch

Badminton?

Come and join our relaxed and friendly group at Pensilva Millennium House

Mon & Tue 7.30 - 9.30pm

Friday 8.00 - 10.00pm

For further info phone

Nigel or Carol on

01579 363594 or

07885 798370

All Being Well

Your local, friendly gym.

Almost 15 years working in our local community to improve health, fitness and well being.

Give us a call on **01579 363890**

or drop in to see us at

Millennium House, Pensilva.

Opening hours:

Mon/Wed/Fri	10.00 to 3.00
and	5.00 to 9.00
Tues/Thur	9.00 to 1.00
Saturday	10.00 to 1.00

1

Monthly

20

BINGO

90

Millennium House

Tuesday 14th October

(then Tuesday 11th November)

77

Eyes Down 7:30pm

Over 18's only

88

CASH PRIZES

9

21

MOBILE LIBRARY

The County Mobile Library visits

Pensilva every other
TUESDAY afternoon

3.50 - 4.05pm Victoria Inn

4.10 - 4.20pm Village Hall Car Park

4.25 - 4.45pm Glen Park



Come and join us for fun and play at

Tiny Tots **Baby and Toddler Group**



Thursdays
9.15am to 11.15am
at Pensilva Village Hall

£1.50 per child

Babies under 6 months and additional children 50p
Includes snack, activity and hot drink for parent/carer

Contact Cathy for further details 01579 363376

St Ive Institute & Village Hall

Every Wednesday
10.30 am until 12 noon
Coffee Morning

Every Wednesday
10.30 am until 11.30 am
Travelling Post Office

1st Monday at 7.30 pm
St Ive Gardening Club

Pensilva Wednesday Club

Meet in Pensilva Village Hall
at 2.30 pm Alternate Wednesdays

Wed 1st Oct. Helen Sparks, A
chaplain at Derriford Hospital

Wed 15th Oct. A Quiz

Wed 29th Oct. Zena Jones, My
Holiday on the Isle of Mann.

**ALL SENIOR CITIZENS
WELCOME TO JOIN THE
WEDNESDAY CLUB**



CHRISTMAS CRAFT FAIR

**Millennium House
Pensilva**

**SUNDAY 2nd November
10-00am 4-00pm**

Come and get in the
Christmas Spirit.

Limited spaces available,
so please book your stall early to avoid
disappointment.

Sarah: 01579 363096

Millennium House, Century Square,
Princess Road, Pensilva, Nr Liskeard,
Cornwall, PL14 5NF

PENSILVA VILLAGE HALL

Pensilva Village Hall no longer collects paper for recycling as Cornwall Council has decided to stop paying recycling/re-use credits to any charities. The Village Hall committee would like to thank everybody for their donations over the years that we have been collecting paper. Over the last few years you have helped us raise an average of £370 a year.



Anyone wishing to book the hall for meetings, birthday parties or fundraisers please contact Peter or Jackie Browning on **01579 363212** or email peter@pensilva.freeserve.co.uk. Please note that in addition to hall rent there is a coin meter for heating at 40p per hour.

WANTED: Jumble and white elephant for a jumble sale on Saturday 1st November. Any donations contact Jackie as above and we can collect.

Organisations that meet in Pensilva Village Hall

Meeting Times	Organisation	Contact Person	Telephone
Mon. 1:00 - 3:00	Breath of Air	Pauline	01579 345989
Mon. 4:00 - 6:00	Brownies	Mrs Martha Oliver	01579 362239
Alternate Wed. 2:30 - 4:00	Wednesday Club	Miss June Mills	01579 362407
Wed. 7:00 & various	Snooker Club	Mr Philip Bond	01579 362091
Thu. 9:15 -11:15	Tiny Tots Baby & Toddler	Cathy	01579 363376
Thu. 7.00—8.00	Beavers and Cubs	Kathleen Hocking	01579 363686
Fri. 1:00 - 3:00	MIMS (light exercise)	Mike	01579 343702
Fri. 4:00 - 5:00	Rainbows	Mrs Lynne Bond	01579 362091
Fri. 6:00 - 8:00	Guides	Miss Caroline Hambly	01579 363228



Survived a brain injury / stroke?

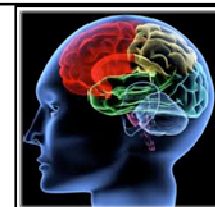
Headway Cornwall-the brain injury association will be offering a monthly support & advice service, activities to include massage, exercise, arts crafts and cognitive games.

At Millennium Centre, Pensilva every 2nd Tuesday of the month between 10am & 4pm.

Drop in for a chat and a cuppa

For more information call Frances or Debbie on

01208 873567 or 07715336853





MOVEMENT IN MOTION SOCIETY OCTOBER NEWSLETTER



Here is another catch up from M.I.M.S as we call ourselves.

The summer is passing us by and autumn is rapidly approaching, however we have had our summer outing and decided to go to Seaton for a walk followed by lunch at the Beach Cafe which all members thoroughly enjoyed. The weather was very kind to us and it turned out very warm and sunny without any wind.

The group has also enrolled three new members again in August which was very nice to see, (so we are doing something right). This brings our membership to approximately 26 including our honorary members who visit us from time to time when they are in the village visiting family and friends.

As you know we are a group of people with various illnesses who like to socialise for a little bit of light exercise, some gossip and a laugh with a cup of tea thrown in for good measure. We use the Pensilva village hall on a weekly basis every Friday between 1.00pm and 3pm. All are very welcome to come and try us out without any obligation whatsoever.

You will find contact details in the Village Hall section of the Parish Pump so we are looking forward to seeing you in the future

I will close now until the next time. Henry Woods. Secretary. 01579 362479

Cornwall Blind Association	Improving the lives of visually impaired people
----------------------------------	---

Struggling with Sight Loss?

Cornwall Blind Association offers emotional and practical help to people living with sight loss in Cornwall including:

Low Vision: Advice for low vision aids

Access Technology: Advice on products

Benefits Advice: Assistance to claim entitlements

Equipment Demonstration: Advice on gadgets

Audio Books: Information on books and equipment

Talking Support: Telephone befriending scheme

Counselling: For those affected by sight loss

Transport: Subsidised travel for some activities

Social Clubs and Activities: Links to clubs and activities across the county

For more details Telephone 01872 261110 or visit www.cornwallblind.org.uk

Registered charity number 1108761

All Being Well - Monthly Newsletter

Tel: 01579 363890

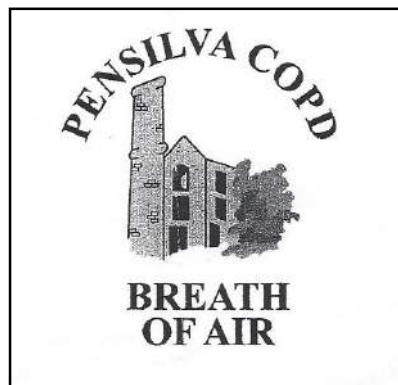
The Iron Man/Woman challenge is in progress during September and, as usual, it seems to have inspired a few people to pull all the stops out!

It's time once again to say a massive and sincere thank you to the local businesses that advertise on our walls, bringing in some much-needed cash. We couldn't do it without you! If there are any other businesses out there that want to put their message in front of a captive audience of grateful potential customers ... get in touch! Apart from hopefully boosting your own sales you'll be helping a local charity to continue to improve the health and well being of our community.

Is there anybody out there who understands VAT, and specifically the rules around VAT exemption for charities? If so, we would really appreciate your help! It all revolves around whether our use of our room in Millennium House constitutes a "relevant charitable purpose" in HMRC terms. It's a bit specialised for us but it would be an enormous help to our finances if it turned out that we fit the bill. If you can help, please get in touch!

Keep well.

NHS registered with
support from local
Doctors



First session is
FREE !

We meet every Monday 12.30 to 2.30pm at Pensilva Village Hall

We are people with long term conditions

Everyone is welcome. Come along for some fun, a cup of tea and biscuits, with a social, light exercise group.

Instead of sitting at home come and meet us for some company.



The **co-operative**

More information from Pauline ²⁶01579 345989 or Fred 01566 775460

ME TIME @ MERLIN



ME TIME FOR CARERS

Do you care for someone 24/7 and would welcome a break

ME TIME FOR YOU

Would you like to have a day in a friendly, stimulating and social environment?

We provide a day facility with activities, creative workshops, outings, lunch, relaxation and support in a wonderful relaxed and friendly centre

Access to a range of therapies to improve health and well-being

Refreshments and lunch provided

Free assessments to establish individual needs

Centrally located in mid-Cornwall

Available to anyone with a neurological condition including Multiple Sclerosis, Parkinson's, Stroke, ME/CFS, polymyalgia, who would benefit from this service

Please contact Shelley King or Lisa Miners for more information

Contact Merlin MS Centre
on 01726 885530

Bradbury House
Hewas Water,
St Austell,
Cornwall PL26 7JF



**Merlin
MS Centre**

A centre of support, therapy
and information for Cornwall

UK Charity Reg No: 1091691

PENSILVA HEALTH CENTRE - PATIENT PARTICIPATION GROUP

We are a group of patients who meet regularly with the Health Centre to bring forward for discussion ideas, comments and suggestions about your surgery. In the past we have held open days, helped at the flu clinics and participated in a trial Peoples Commissioning Board Project.

We also organise a Carer's and bereavement group (see below) and a 'Walking for Health' group (**Contact Ann Wood 01579 364085**).

If you would like to talk to one of us you can contact us directly or through the Health Centre.

PENSILVA HEALTH CENTRE - PATIENT PARTICIPATION GROUP CARERS AND BEREAVEMENT GROUP

Are you a carer, bereaved or lonely? Then come along and join our group.

Tea, coffee, biscuits and plenty of friendly chat.

Every 2nd Tuesday of the month 1:30 to 3:30. Enter by Health Centre side door.

Jean Conner 01 579 363 221 or 07 899 694 670



**Due to funding issues
the Hearing Aid Maintenance drop-
in clinic service at Millennium
House has been reduced.**



The service will operate quarterly on the following dates:

Wednesday 5th November 2014 10.00am to 12:30pm

Wednesday 4th February 2014 10.00am to 12:30pm

Other local drop-in services:

2nd Thursday of every month, 2.00-4:30pm at Oak Tree Surgery, Liskeard.

2nd Friday of every month, 2.00-4:30pm at Launceston Medical Centre.

4th Thursday of every month, 10.00-12noon, at Chatlink, Old School House, Torpoint.

2nd Tuesday of every month, 1.00-3.00pm, Saltash Library.

**For further information contact Karen Squire;
Regional Information Officer**

Karen.squire@hearingloss.org.uk

01752 228657

Action on Hearing Loss is the trading name of The Royal National Institute for Deaf People.
A registered charity in England and Wales (207720) and Scotland (SC038926) A0044/0511

Memory[®] Walk

Fighting dementia together

Plymouth Memory Walk

The Hoe, Plymouth

Sunday 5th October 2014

Walk starts at 11am

To register visit www.memorywalk.org.uk

Stalls and entertainment from 11am to 3.30pm

memorywalk.org.uk

Registered charity, 278453, Alzheimer's Society operates in England, Wales and Northern Ireland.



**Alzheimer's
Society**

Leading the
fight against
dementia

Pensilva Primary School PSA Registered Charity Number:
1098548

Centenary Club Draw

If you would like to take part then please complete this form in full and hand into reception along with your £12 in cash or cheque for each number required in an envelope addressed to the PSA Centenary Club **by the 31st October 2014.**

Cheques to be made payable to Pensilva Primary School PSA.

You can purchase as many numbers as you wish, the more numbers allocated = the larger the prizes!!!!

Once we have firm figures of how many people have joined the club you will be given a receipt and your allocated number/s along with further information of prize money.

If you wish to continue next year your £12 for each number will need to be paid the 30th September 2015.

Name:

Address:

Telephone Number:

Signed:

Date:

Pensilva Primary School PSA Registered Charity Number:
1098548

St Ive Church

Services at 11:15am Every Sunday

- Oct 5th** Holy Communion
Oct 12th Family Service *Small pets welcome*
Oct 19th Holy Communion - Lunch follows this service
Oct 26th Morning Service
-

Other October Events

Fri 3rd Home Produce & Bric-a brac with Lunch & Coffee 10:30 -1pm
Home Made Cakes, Fresh Veg, Local Made Pasties, Pickles, Jams & much more.

Sat 4th Safari Supper at Millennium House 6:30pm

Sat 11th Annual Craft Fair in the Church 10am to 4pm

Sun 19th Lunch in the Church, all welcome, 12:45pm, only £7

Reverend Margot Davies **01579 208698** email margottaj@tiscali.co.uk

Church Wardens: Brian Dwelly **01579 364010** (btdwelly@aol.com)

Paddy Long **01579 364006**

Please tell the Priest or Churchwardens of anyone requiring a home or hospital visit

St Ive Methodist Church

Services for October 2014

- | | | |
|------------------------|---------|---|
| Sunday 5th Oct | 11:00am | Mrs Helen Burke |
| | 6:00pm | Rev. Jonathan Budd |
| Sunday 12th Oct | 11:00am | Rev Ruth Goodland with Communion |
| | 5:00pm | Pizza and Praise at Pensilva |
| Sunday 19th Oct | 11:00am | Rev Tim Wilkinson |
| | 6.00pm | No service at St Ive due to concert in Callington |
| Sunday 26th Oct | 11.00am | Miss Helen Sparkes |
| | 6.00pm | Rev Tom Osborne |

Knit and Natter craft group will meet on Thurs 9th and 23rd at 2pm.

Chattermakers craft group will meet on Thurs 2nd, 16th & 30th at 7:30pm.

Bible Study group will meet on Thurs 9th and 23rd at 3pm.

ST JOHN'S CHURCH, PENSILVA

Services for October 2014

Anglicans and Methodists share services at 11 am each Sunday, coffee served before service

Sunday 5th	9.30 am	Anglican Benefice Eucharist at St Cleer
	11 am	Rev. Mark Pengelly, Holy Communion Service
Sunday 12th	11am	Anglican led Holy Communion Service
	5 pm	Pizza and Praise at Millennium House
Sunday 19th	11 am	Cafe Church
Sunday 26th	11 am	Mr. Paul Harold

Pizza and Praise on 12th October is an informal worship for busy families, with a bite to eat before we leave. All are welcome to come and join in.

Every Thursday at 10 am there is a short **Holy Communion** service. A **coffee morning** is held afterwards, open to all.

Afternoon Tea on Friday 3rd October, 3pm at St. John's Church. Bring and Buy. Everyone very welcome.

Coffee and Cake Saturday 4th October at Jean and Ivor Hoare's House, 4 Slade Park Cottages, 10am - 12 for St John's Church. £2. (see separate notice).

Prayer Group meets Friday 17th and 31st October. Please ring Rev Keith on 343240 or Rev Kev. on 363336 if you would like prayer for yourself or someone else.

Fellowship will be on Friday 10th and 24th October. Further information from Geoff or Carolyn on 362698.

*For further details of the Services held in St John's, if you know of any illness or need in the village or if you would like your wedding or baptism in the church, please contact:
Geoff Cox - 362698, Maria Parker - 362098, Frances Tucker - 363718*

ST CLEER – PENSILVA PARISH CHURCHES

MINISTRY TEAM FIRST CONTACTS

Baptisms: Libby on 340942 Weddings: Linda on 344834

Funerals: Geoff on 362698 Home Visits: David on 345374

Vicar: Reverend Keith Jones

Associate Priests: Rev Margaret Millson & Rev Raymond Chudley



Experts in wood, trust us we're good

Decking
Fencing
Flooring inc. Oak
Plywoods + Hardwoods
Construction graded timber
Cladding inc. cedar

Large car park
Full certification FSC/PEFC
Retail Shop
Clinton Gates
Local friendly team
Large stock displayed



Buy online at
www.bondtimber.co.uk
or call 01503 240 308

Use this discount code for
all orders: S9347775

Orders can be collected or
delivered





Avalennek, Caradon Town,
Upton Cross, Liskeard
Cornwall PL14 5AR
Telephone 01579 363598
Mobile 07901 538132
chrisrousevell@tiscali.co.uk

HOG ROAST EQUIPMENT HIRE AND MEAT SUPPLY

Hog Roasts For Those Special Occasions
Self Catering or Hassle Free Service
Everything done to your special requirements

CHRIS ROUNSEVELL
TRADITIONAL BUTCHER

D. Hall

Painter & Decorator

Interior & Exterior Painting
Kitchens & Bathrooms
Wall & Floor Tiling
Covering all General
Household Maintenance



Derek Hall

Mobile: 07974 066 292
Tel: 01579 362 783

KEEP IT TIDY

General Property Maintenance
including Decorating, plus
Electrical



HONEST PRICE
for **QUALITY** work.

No Job Too Small

Kit Rickard

18 Higher Glen Park
Pensilva

Phone: 01579 363378

Mobile: 07855 699071

Email: KITKeepItTidy@hotmail.com



Computer Tamer

Home help

for all your Computing needs.

Down to earth, jargon-free tuition, advice, repairs, troubleshooting, upgrades & installation.

Puzzled by email setup, anti virus, backing up photos or any other aspect of using your machine?

Need that computer set up or repaired?

Need a website designed or updated?

For all this and more call Tony for a free chat about your needs. Then I can visit you at your home. No callout fee for a local visit, just a reasonable hourly rate.

Talk to you soon. Gift vouchers available

01579 320547 t.bedden@btinternet.com



FIT PAWS



Dog walking and/or home boarding.

Home visits for feeding and toileting also available.

£ 5.00 per half hour for feeding, toileting and/or walking.

£10.00 per day for home boarding with food included.

Telephone Sarah:

01579 363385

or **07715582135**

Email: info@fit-paws.co.uk

The **co-operative** personal travel advisors



Let me introduce myself, **Tamsin Gladwell**. With 10 years travel industry experience, I run my own business through **The Co-operative Personal Travel Advisors**. I would love to assist you with any travel arrangements.

With **ABTA membership and ATOL bonding**, you will have complete peace of mind as your booking will be with a secure travel organisation.

No need to spend time on endless phone calls or searching the internet. Fully equipped with the latest travel technology, I will do the all the hard work, saving you time and tailoring your travel requirements to suit you.

- ◆ UK & Overseas City/Short breaks
- ◆ Bespoke itineraries tailored for you
- ◆ **Lots more ...** I'll use my contacts and expertise to find exactly what you want!
- ◆ Flight only & Accommodation only
- ◆ Cruise, Ski, Beach & activity holidays

Tamsin Gladwell 01579 345873 in or out of office hours.

tamsin.gladwell@co-operativetravelpta.co.uk

36

Follow me on Facebook for my latest offers.



**D.J.A.
BUILDING SERVICES**

ALL ASPECTS OF PROPERTY
MAINTENANCE
BUILDING & REFURBISHMENT

- * Bespoke Furniture and Kitchens
- * Wardrobes and Bookcases
- * Garden Sheds, Poultry Houses & Small Animal Shelters
- * Over 30 years' experience
- * Fully insured * References available
- * Free estimates * No VAT

Call David

**01579 364050 /
07767662635**

PROBLEM?

Folks coming to visit? No space to put them up?

SOLUTION!

Book them into "The Birches", purpose built holiday bungalow, just two miles from Pensilva.

Sleeps 6: fully equipped: linen & towels provided : dogs welcome: free WiFi.



Call Vanessa on 01579 362377.
10% off tariff with this ad!

Manor House Care Home



Specialists in Dementia Care

Permanent, respite and day care available

Please call for further information

01579 343 534

Email: manorhouse.tremar@yahoo.co.uk

Website: www.manorhousecare.co.uk



Domestic Electrical
Property Maintenance
Interior & Exterior Work
Carpentry :: Decking
Kitchens :: Bathrooms
Wall & Floor Tiling
General Plumbing

MCCARTHY PROPERTY MAINTENANCE

Electrical Safety
Register incorporating
ELECTSA  ECA
Certification Ltd

HIGHLY REGARDED LOCAL BUILDER
COMPETITIVELY PRICED
COVERING THE SOUTH WEST

Contact Dominic

07968 599 675

01579 362 945

info@mccarthypropertymaintenance.co.uk

www.mccarthypropertymaintenance.co.uk

VISIT CALLINGTON

A Fair Trade Town

Whether you need white goods or carpets for your home,
or need to mark a special occasion, with a gift or card,
you can find it in Callington. From a light bite in a tea room or
Cornish Pasties to take away to dinner in a restaurant.

From antiques and curios, bicycles and D.I.Y. to bridal wear.

A great choice of independent specialist shops.

There is so much more - Visit to see for yourself

Callington Traders Association



SHOP LOCAL
AND KEEP CALM



Have You Made Your Will?

**Make Your Will (or update your old Will) in the privacy
and comfort of your own home at a time to suit you.**

Lasting Power of Attorney: *Property Trusts*

Childrens Trusts: Executor Support/Probate

Help Protect Your Home From Care Fees

**For a FREE brochure, arrange a Home Visit
or just need advice on making a Will;**

Call 01579 362033

Or email: donmadden@btinternet.com

www.justwillsandlegalservices.co.uk

Member of the Society of Will Writers & the Professional Association of Legal Services.

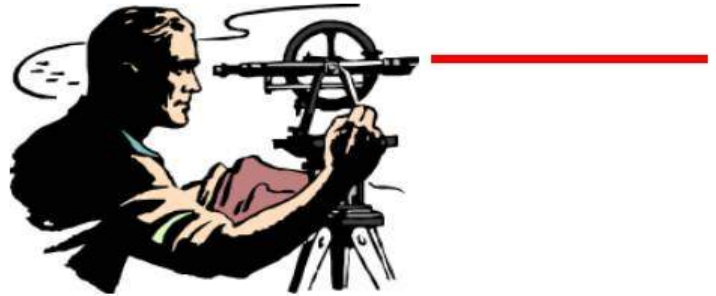
Martin Hoare – Local, Reliable, Competitive



WHEEL DIGGER FOR HIRE
ALSO AVAILABE 'BREAKER'
AND NEW CONCRETE
'CRUSHER BUCKET'

ALL AT COMPETITIVE RATES

GROUND WORKS
DRAINAGE
NEW DRIVEWAYS
SEPTIC TANKS &
'SOAK AWAYS' INSTALLED



LASER LEVEL FOR HIRE
QUOTES AVAILABLE



Phone 01579 363517

or

Mob 07863 291213



Steve West Aerial Services



Installations / Repairs to
TV Aerials, Satellite Dishes
and Radio

Customised to your requirements

Wireless network &
Mobile phone extensions

TV mounting on walls
Help setting up systems
and demonstrating.

Phone 01726 212761

Mobile 07941 606 183

e-mail stevewestaerials@uwclub.net

CORNWALL PET SERVICES

HOME BOARDING FOR DOGS
DOG WALKING
HOME VISITS

Situation: Between Liskeard and Callington

- Home Boarding for Dogs – safe home environment, off-road walking
- House calls to suit your family pets
- Dog walking
- Fully insured
- Police Checked

Chris Day
Birchill
Quethiock
Liskeard Cornwall
PL14 3SQ
Tel 01579 340438

Email – cornwallpetservices@gmail.com
www.cornwallpetservices.wix3.com

J. H. Simmons

Painting & Decorating



Interior
&
Exterior



No Job Too Small

References Available

For more information
Please call John
01579 362688

7 East Park, Pensilva



FERN LODGE

Boarding Kennels & Cattery

- Fully insured and licensed
- Individual care and attention
- All diets cared for
- Early morning walks, late evening Strolls & plenty of playtime
- Quiet rural setting
- Dog Training
- Knowledgeable & friendly staff
- Collection & delivery service.



Come and visit our on site pet shop
Vast variety of Dog and Cat food
Top names all at competitive prices.
FREE delivery service inside the parish!

Tel: 01579 363030
Golberdon Road, Pensilva

Calming Hands

The Holistic Therapy Room

-Swedish body massage-Aromatherapy-Reflexology-
-Hopi Ear Candles-
-Indian Head Massage-

MILLIE PARROTT

Therapist

Tel: 07787 400702
Email: enquiries@calming-hands.co.uk
Measham, Rilla Mill
PL17 7PQ
www.calming-hands.co.uk





Don't bury your head in the sand - Get your Self Assessment Tax return done now

If you would like help with your Business Accounts or Tax Return please feel free to contact me. I am a fully qualified Accountant with over 20 years experience.

- Annual Accounts and tax calculations for Sole Traders and Partnerships
- Self Assessment Returns – Individual or Partnership
- Book Keeping & Payroll
- Personal Tax Planning
- Company Accounts, iXBRL tax filing & Company Secretarial
- Business Support & Advice



Kate Vaughnley FCCA - Chartered Certified Accountant
 Website : www.kvaccountingsolutions.co.uk or Email : katevaughnley@gmail.com
 Telephone : 01579 364083 / 07725 004152

Penharget Farm B&B



Pensilva

Quality 4* en-suite Accommodation

For more information call Julie

01579 362221



www.penharget-farm-cornwall.co.uk

Bruce Jack
Upholsterer of Fine Furniture
Traditional & Modern



For all aspects of Upholstery and Loose Covers, including fabric sales, contact Bruce on;

01822 834433

or visit our website at www.bruce-jack.co.uk



41

"We have already written our Wills, leaving everything to one another and then to the children when we've both gone ...".

- sounds familiar, doesn't it!

... but your children could end up with very little, irrespective of your worth today. The principle reason is that one or both of you could need residential care at some stage in your life, whether it's owing to an accident, say a car crash that leaves you physically or mentally incapable, or just through old age and not being able to manage.

Once upon a time this would not have been a problem because we relied upon the NHS or local authority to provide for our care. After all, we've paid our taxes and contributed to the National Insurance fund — but it doesn't work that way any more!

The Government does provide a safety net — if you have very few assets; but if you have assets over certain limits you will be expected to meet all your own care costs, and these can vary from £500 to £800 per week or more. It doesn't take long to spend thousands of pounds in this way.

Do you want to be absolutely certain the assets you have worked hard to acquire during your lifetime will provide for those you love when you've gone? If so, you need to protect them now, and not rely on your Will, which takes effect at the time of death, and in many cases is too late to protect assets from the challenges we face during life.

No two situations or circumstances are the same, so getting some free advice is a positive step in the right direction!

Have you written a **Will**?

Have you appointed **Lasting Power of Attorney**?

Have you **protected your property** by placing it in a **Trust**?

Do you have a pre-paid **funeral plan**?

Would **equity release** improve your quality of life?

LEGACY
WILL WRITING • TRUSTS • ESTATE PLANNING

Free advice from Philip Head, Legacy Legal Services, Liskeard
in the comfort of your home

call on Freephone: **0800 959 6171** or **07817 990230**

www.LegacyLegalServices.org.uk

Kilmar House Residential Care Home

**We pride ourselves on being different!
01579 343066**



Kilmar House is the smallest elderly residential home in Liskeard and the personal touch really shows. Each resident is treated as an individual who is free to spend their days as they

wish. We have no rigid routine or schedule that you need to fit into, you tell us your schedule and that is what we work towards!



We may be the smallest home but have a very large house with lots of rooms for residents to spend their time how they wish. We have all the required facilities and activities to make your stay very comfortable as well as a large and productive garden to enjoy.

Please come and visit our beautiful Jacobean home which has been lovingly restored and maintained. You do not need to make an appointment to come and look around, we will always be pleased to welcome you.

We are pleased to offer permanent placements in some of our most beautiful rooms, some with en-suite facilities as well as respite and day care to whatever suits your needs.



DOG GROOMING

40 YEARS EXPERIENCE



SMALL and MEDIUM Dogs Groomed to Your Request

**LISKEARD AREA
Inquiries Welcome**

**Call Patricia: 07517 658862
TO YOU OR TO ME**

Sarisen Mechanical

“Let the workshop come to you”
Experienced and qualified mobile mechanic and engineer

- ◆ Repairs & servicing of cars, light vans, campers & trailers
- ◆ Welding of vehicles & light steel fabrications
- ◆ Recovery & roadside repairs
- ◆ Mechanical Restoration of classic vehicles and machinery
- ◆ M.O.T's arranged

No job too small or to big



**Major debit/
credit cards
accepted**

**Phone: 01579 363548
Mobile (24 hr): 07780526602
Email:sarisen1953@yahoo.co.uk**

**Manor House Inn
Rilla Mill**



**Traditional rural pub where families and dogs are welcome...
recommended by The Real Ale Guide
and The Good Dog Guide**

BAR OPENING HOURS

**Sat & Sun 12-11, Mon 6-11
Tue to Fri 12-3 & 5-11**

**Home-cooked food served Tue to Sun 12-2 and 6-9
Delicious Sunday Roast 12-2: £7.00 adult, £4.95 smaller/child**

Free WiFi, Pool tables, Dart boards, Games, Live Music

WHAT'S ON THIS MONTH

**LIVE MUSIC - Fri. 17th October - "Without Johnny"
Fri 31st October - Fancy Dress Halloween
Call or check Facebook for details**

Check out our website for full details www.manorhouserilla.co.uk
also⁴⁴ like & follow us on **Facebook** for the latest events & offers



Victoria Inn



The Cross, Pensilva, PL14 5NB

Tel. 01579 363933

Charles & Vicky would like to
welcome you to the Victoria Inn.



Good beer and ales
Pool Table and Sky TV
Open from 12.00 Daily



Crafts @ Gorfenna

Craft Courses for Beginners, Improvers
and more Advanced Crafters in our

PURPOSE BUILT STUDIOS

Email:

craftsgorfenna@gmail.com



The Gorfenna Gallery

**Cornish Arts and Crafts
Exhibition**

Pop in and support LOCAL Artists and
their Work

If you are interested in exhibiting yourself,
please contact either Mandy or Lesley

Gorfenna, St. Ive, Nr Liskeard, PL14 3LX

01579 384810 / 07833 513347

Open: Monday-Friday 8.30-5.00

www.craftsgorfenna.com



Pensilva Stores

Amazing Value

Premier
a great deal more from your local store
Mon-Sat. 7:00 AM. – 9:30 PM.
Sunday 8:00 AM. – 9:30 PM.

- ✓ Fantastic Special Offers every month!!! (See store leaflets)
- ✓ Come and Check out our great deals on Wine, Beer and Spirits
- ✓ Local Produce: Homemade Butter and Clotted Cream, Meat from our local butcher
- ✓ Cornish Fresh Fruit and Vegetables
- ✓ Fresh Bread, Pasties and Cakes
- ✓ Take Away Coffee, tea and hot chocolate
- ✓ Newspapers and Magazines, Greeting Cards
- ✓ Paypoint, Lottery

*** Free to use ATM ***
*** Card Payment ***

Friendly Staff + Service with a Smile !!!

Pensilva Stores is a family run business who have been serving local people and visitors for more than 21 years.

Higher Road, Pensilva, Liskeard, Cornwall PL14 5NQ

Tel: 01579 362547

MENDOLOGY

Garage Door Specialist

- Repairs
- Servicing
- Installations

Out of hours service
call Dave anytime 07974 442645

MENDOLOGY COMMERCIAL DOORS LTD
www.mendologydoors.co.uk

01579 363760

Pensilva Cars

Unit 6, Ten Acres Ind. Est. Pensilva, Liskeard, PL14 5RE

01579 363516

pensilvacars@hotmail.co.uk

<http://www.pensilvacars.co.uk>



- ◇ Local Recovery £45
- ◇ Servicing from £60
- ◇ Cam belt and clutch specialist
- ◇ Diagnostics using the latest Equipment
- ◇ **Free** Mini courtesy cars
- ◇ Car and Van Sales
- ◇ M.O.T Class 4 from £39
- ◇ Fully licensed air conditioning repairs
- ◇ Good Garage Scheme - approved member

Now offering “Elite” remapping to improve performance and economy.

We can service and repair your car to Manufacturer specification, keeping your Dealer Warranty without main dealer expense.

TREVALLICK'S



FARM SHOP

Tea & Room

Summer hours

Mon-Sat 9-6, Sunday 10-5

We are situated in Pensilva
PL14 5PJ near Liskeard,
on the B3254

Tel: 01579 364061

www.facebook.com/trevallicks

***New...** The tea room is now fully licensed so you can enjoy a selection of Cornish Ales, Beers and Ciders.*

***Afternoon Teas** ... for that special treat ...*

Trevallick's Afternoon Tea £12.95pp

... Or ... Just the Sweet Stuff Afternoon Tea £8.95pp

**We cater for any dietary requirement.
Booking in advance is essential 01579 364061**

Hire a Trevallick's Rucksack Hamper

**....filled with a delicious pack lunch
(available for up to 4 people) prices vary.**

SUMMER FUELdisposable BBQ's,
charcoal and instant lighting charcoal.
Logs and kindling available all year!

FEED THE PIGSthe piggies are
back from holiday and meet the
NEW Trevallick's bunnies.



tile *italia*

SPECIALITY TILE IMPORTERS

**WAREHOUSE SALE
AND
SPECIAL OFFERS TO
PUMP READERS
FROM
JUNE - SEPTEMBER 2014**

Visit us on Pensilva Industrial Estate

Tel: 362264

www.tileitaliauk.com

Professional Cleaner

- Experienced
- Reliable
- Reasonable rates

I was previously a cleaning supervisor for Waitrose where I managed a small team of cleaners. I have also worked for commercial cleaning companies in homes, offices, banks etc. If you want a cleaner for your home or office call Steve on:

01579 362707
or **07449 127567**

Wm. Newham & Sons Est. 1835

Proprietor Robbie Savill AWCB

**CHIMNEY SWEEPS
& BLACKSMITHS**



CHIMNEY SWEEPING

BIRD GUARDS, COWLS & POTS FITTED

CCTV INSPECTIONS & SURVEYS

STACK REPAIRS & REBUILDS

RIGID STEEL SYSTEMS ERECTED

**STAINLESS STEEL and PUMPED CONCRETE
CHIMNEY LINING**

STOVES SUPPLIED, INSTALLED & REPAIRED

FIREPLACE ALTERATIONS & RENOVATIONS

FULL RANGE OF FIREPLACE FURNITURE

made to order

01579 347777

Personal Carer

Experienced Mature
Carer

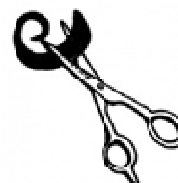
Available for all personal care
needs

Personal Care, Domestic,
Shopping Trips

Tel 01579 363373

Mobile 07799422253

Email: harvey008@hotmail.com



Vanessa
Mobile Hair Stylist
Nail Technician
Spray Tans

Prices@www.vanessahair.co.uk

TEL: 01579 363197

or

07833227866



KEITH RICHARDS

Motor Body Repair Specialists

A family run business with fully equipped & maintained workshops & a focus on
Customer Care

- ◇ Motor Body Repair Specialist
- ◇ Mechanical Repairs
- ◇ Servicing to All Makes & Models
- ◇ Computer 4 Wheel Alignment
- ◇ 24 Hour Recovery Service
- ◇ Renovations & Re-sprays
- ◇ Member of RMI (Retail Motor Industry Federation)
- ◇ Latest Diagnostics (including specialists for VW, Audi, Seat, Skoda & Vauxhall)

With over 30 years' experience we aim to provide you with:- Value for Money -
Friendly Service - Professional Approach - Expert Advice that you Can Trust
(Visit our website for more details)

Pensilva Industrial Estate, St Ive Road, Pensilva, Liskeard, Cornwall PL14 5RE

Tel: 01579 362593

Email: keith@keithrichardsmotorbody.co.uk

Fax: 01579 363194

Website: www.keithrichardsmotorbody.co.uk

GROUP TRAVEL

Dunmere Road Garage, Dunmere Road, Bodmin, Cornwall, PL31 2QN

2014 COACH EXCURSIONS

5 th OCT	ROSEMORE APPLE DAY
8 th OCT	GOOSEY FAIR
NOVEMBER	TURKEY & TINSEL (Details to follow or give us a call)
1 st NOV	BRIDGWATER CARNIVAL
28th NOV	TAVISTOCK DICKENSIAN EVENING
6TH DEC	CLERKS SHOPPING VILLAGE

FOR BOOKINGS & ENQUIRIES CONTACT 01208 77989

More details on www.grouptravelcoachhire.com

Save Costly Energy!



SOLARTEC

Windows &
Conservatories Ltd

**'A' Rated WINDOWS & DOORS
at BEST PRICES EVER!**



Professionally fitted and finished by us with a

FENSA REGISTERED 10 year ins. guarantee.
In all colours



NEW

**FACTORY SHOP
SUPPLY ONLY**

For all your windows, doors, conservatories,
fascia, trims, guttering and sealants

**7-10 DAY TURN AROUND ON WINDOWS,
DOORS and CONSERVATORIES**

TEL: 01579 343425

FAX: 01579 344500

WEBSITE: www.solartecwindows.co.uk

EMAIL: sales@solartecwindows.co.uk

KEEPING JOBS IN CORNWALL

NICOLA GREENE

BSc (hons) Podiatry MChs

HPC Registered Chiropodist/Podiatrist

**Home Visit Practice treating all
your foot care needs:**

- Nail Cutting
- Corns and Calluses
- Thickened Nails
- Dry Cracked Skin
- Verrucae
- Foot Pain
- Diabetic Foot Assessments
- Wound Care

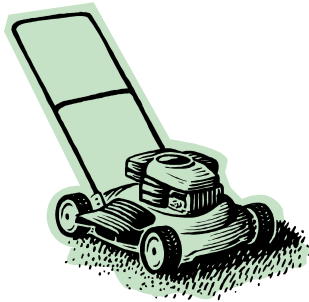
T: 01579 590027

T: 01752 291565

M: 07786164205

E: nicki_green@yahoo.com

DAVID HEWETT GARDEN SERVICES



Lawn mowing, grass cutting,
strimming, hedge cutting,
general garden maintenance

20 years' experience

Fully insured

01579 363796

need somewhere to stay ?
between homes ?
family/friends visiting ?



ideal for Pensilva
& St.Ive

please call Jackie on
01579 362216

J.J.CHILD

PLUMBING AND HEATING ENGINEER

OIL AND GAS APPLIANCE SERVICE , REPAIR AND BREAKDOWNS

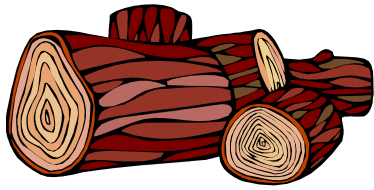
LANDLORD'S CERTIFICATES

OVER 25 YEARS EXPERIENCE
CALL JOHN ON 01579 362336
MOBILE 07837921086



502322

SEASONED LOGS



MIXED LOAD
or
HARDWOOD

Tel Jonathan

Mobile 07966 070725
or
01579 363157

Also tree/hedge work
undertaken

Mark Fitch

CHIMNEY SWEEP

- Brush & Vac
- No Mess
- Professional Affordable Service
- Discount on Multiple Chimneys

Covering all S.E. Cornwall



Tel: 01579 343899

Mobile: 077734 62643

B & P Electrics

Local, Experienced and Reliable

All Types of Electrical Work Covered

- Domestic
- Commercial
- PAT Testing
- Landlord Certification
- Free Estimates
- 24 Hour Call Out

Contact :- 07772571932 Or

Landline :- 01579 343701

Bargain Corner Free Ads up to £50

Ads are free for items up to £50. There is a £5 charge for items over £50.

Please contact the Parish Office on **01579 363096** or leave a note at Millennium House reception or email **parishpump@btconnect.com**.

Please let us know when your item has sold.

Quantity of **strong cardboard boxes** for house removals, some still flat-packed and wrapped, 15 Large (flat/wrapped) plus 12 small/medium (made up) All stored in dry conditions. **£15**

Prestige Non-Stick 28cm **Multi-Cooker**, electric plus colour recipe book and operating instructions. **£15**

Ladies' Karrimor Waterproof **Walking Boots**, size 7, Dark Grey/Cochineal. Brand new with Tags. **£40**

Metal Post Box, dark green, with lock and key. Fixes to outside wall. **£15**

12v Battery Charger - £10

Andrew James **Mini Oven and Grill**, black, 3 shelf positions, Grill Pan/Meat Tray. Immaculate, used only a very few times while awaiting delivery of new cooker. Cost £49.99 Bargain at **£30**

Please phone Rosemary on **01579 362574** or **07887 787202**

Mothercare Pine Cot - £45

Moses Basket - £10

AGA Large Roasting Tin - £20

AGA Kettle - £25

AGA Cake Baker incl. 3 tins - £35

01579 362012

WANTED - Electric Treadmill.

Preferably with incline but will view any.

Call Una on 07855 689403

Tri Walker with bag £30 o.n.o.

01579 363945

House Plant in S/Steel pot. Now 6' high.

Strappy green leaves on long stem.

Suitable for conservatory or office. **£20**

01579 362643

Oak Bureau £7.50

Mahogany TV Table (G-Plan) £5.00

01579 363892

Victorian Curved Shower Screen.

Aluminium half framed. 4mm toughened glass. Suitable for either end of bath.

H 130cm W 76cm **£25.**

01579 382772

15" Pink TV. Perfect working order. Just changed for a larger one. **£20.**

01579 362684

Two internal staircases

1. Unused flight of pine **stairs:** 10 ft long, 3 ft wide, 9 steps **£50**
2. Used old flight of wooden **stairs:** 8 ft long, 3 ft wide 10 steps **£35.**
Call John on **01579 362293**

Dog guard, as new, will fit Land Rover Discovery. **£50. 01579 362446**

Bargain Corner Free Ads up to £50

One white faced chipboard 'Teenager' **Desk** in reasonable condition – approx. size 1080mm (42”) x 500mm (20”) x 690mm (27”) high - **£10**.

One wood effect finish **Corner Unit** (with three shelves) in reasonable condition – approx. size 400mm (15.75”) x 400mm (15.75”) x 807mm (34.25”) high - **£5**.

One white wood pattern finish **Kitchen Wall Unit** (incl. one shelf) in reasonable condition – approx. size 300mm (12”) x 300mm (12”) x 560mm (22”) high - **£10**.

Two wood **wine racks** in reasonable condition – approx. dimensions 22” x 16” x 7 3/16ths” (560mm x 407mm x 182mm) – **£5** each.

One **Pond / Pool electrical vacuum cleaner** unit complete with hoses - **£15**.

Contact Peter/Maureen **01579 208519**.

Greenhouse Glass

2ft x 2 ft x 10 sheets
2ft x 1ft 6ins x 12 sheets
Plus 2ft x various lengths

£5 the lot

01579 362581.

Leather Office Chair

Excellent condition **£40** ono

01579 346982

Internal doors

6 @ 2ft 6ins: 1 @ 2ft 3ins. Any offer considered. **01579 362852**

Hilka advanced digital multimeter with own case and stand. Hardly used. **£10**.

56

01579 362066

Tummy Trimmer £10

Air Strider £10

Roll Tummy exerciser £8 ono

White bidet brand new with taps £45

Saddle, very comfy “wide” fitting £49

Stirrups / Stirrup leathers £8

Various tack, haynets, bits, martingales, numnahs & more - Offers

Suitcase full of dolls / dolls clothes £10

Kodak Easyshare photoviewer digital picture frame. New. £25

Call Pat on **01579 362959**

Expanding dining room table, 4 chairs and 2 carvers. £50

01579 362064

Fridgemaster Larder Fridge £30

01579 364086

3 city scene **lampshades**, 1 ceiling & 2 table. Metallic silver in colour. **£10**

Complete set of Avon Sarah and Theodore **Loveable Teddies ornaments**. 13 in total, 1 musical.

£4 each or **£40** the lot.

07971 253766

Quality White Ceramic Toilet & Cistern

Complete with handle, flush etc. **£40**

White Ceramic Slim Line Hand Basin

complete with Chrome Taps **£25**

Paint:

Crown Quick DrySatin White 750ml **£5**

Dulux Magic White Silk 4 Ltr **£10**

Dulux Sea Blue 2.5ltr **£10**

1929 Adam Cream 4Ltr **£10**

01579 363497

Please let us know when your item has sold.

Bargain Corner Free Ads up to £50

Gazco Linea wall mounted **gas fire** with remote control and balanced flue, black glass front. Hardly used **Offers.**

1 pair Dunelm Mill ready made curtains width 76" drop 54" design Gabriella, Colour Duck egg blue/flowers. New and never used. cost £125 will take £50

01579 363497

Metal cabin bed with new, still boxed, desk and chair to go underneath.

Good condition. **£50 ono.**

Small fish tank w/ gravel and log. **£5.00**

Home phone - binatone, with power cables and manual. **£5.00**

01579 383361.

Honeywell **24 hour electronic central heating/hot water programmer** - brand new still boxed. **£15**

01579 362851

VAX mojo 111 1200 small cylinder **vacuum cleaner**, with hose, attachment & spare bags. In good condition. **£15**

Hoover 2000W upright **vacuum cleaner** with power edge cleaning, in good clean working order. **£35.**

01579 363642

Please let us know when your item has sold.

Children's Food Boxes

Now available in the Millennium House Cafe

- ✓ Sausage & Chips / Nuggets & Chips or Ham Sandwich / Cheese Sandwich
- ✓ Packet of Quavers
- ✓ 2 Finger Kit Kat
- ✓ Blackcurrant, Raspberry or Orange Drink

£3.50



What's on in St Ive Parish ?

WHAT'S ON	WHEN	CONTACT DETAILS
MILLENNIUM HOUSE		
Aikido	Thursday 7:00pm	
Antique & Collectors Fair	4th Sunday Monthly 10:00 - 4:00	
Badminton Club	Mon & Tues 7:30pm. Fr. 8.00pm	01579 363594 (Carol & Nigel)
Book Exchange	Daily	01579 363096
Country Dancing	Alternate Thursdays 8.00 - 10.00pm	01579 382402 Ray Buckingham
Farmers Market	2nd Sat Monthly 9:30 - 12:30	01579 363096
Fitness Pilates	Monday 9:30 - 10:30am	07850 473428 (Dianne)
Friday Club (Supervised play 5—12 year olds)	Friday 6.00pm - 7.30pm	07715557645 after 3.30pm Pam
Hearing Aid Maintenance	1st Wednesday 10.00 - 12.30	01752 228657 Karen Squire
Ladies Netball	Friday 09:15 - 10:15am	07985 387472
Pensioners Lunches	Tuesday 12:00 - 2:00pm	01579 363096
Short Mat Bowls	Thursday 7:00pm	
Tai Chi	Tuesday 7:00 - 8:00pm	07949763256 (Bob)
Village History Group	Last Monday Monthly 7:30pm	01579 208754 (Angus)
Wildlife Group	Quarterly	01579 362539 (Hilary)
Woman's Institute	2nd Wed Monthly 7:15pm	01579 363718 (Frances Tucker)
Yoga	Wednesday 7:00pm	01579344464
Zumba Fitness Classes	Wednesday 7:30 - 8:30pm	07850 646207 (Sarah)
PENSILVA VILLAGE HALL		
Beavers and Cubs	Thursday 7.00pm - 8.00pm	01579 363686 Kathleen Hocking
Breathers Group	Monday 1.00pm - 3.00pm	01579 345989 Pauline
Brownies	Monday 4:00 - 6:00pm	01579 362239 Martha Oliver
Girl Guides	Friday 6:00 - 8:00pm	01579 363212 Jackie Browning
Pensilva Wednesday Club	Wednesday 2:30pm	01579 362407 Miss J Mills
Rainbows	Friday 4:00 - 5:00pm	01579 362091 Lynne Bond
Rangers	For Info	01579 362982 Kirsty Oliver
Pensilva Snooker Club	Wed 7:00pm + Various times	01579 362091 Phillip Bond
Tiny Tots	Thursday 9:15 - 11:15am	01579 363376 Cathy
PENSILVA SCHOOL		
Pensilva Pre-School	Monday-Fridays 9-12.00 noon	

What's on in St Ive ?

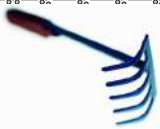
ST IVE INSTITUTE

Art & Craft Group	Tuesday 1:00 - 5:00pm	01579 362216 (Jackie)
Coffee Morning	Wednesday 10:30 - 12:00	
Gardening Club	1st Monday monthly 7:30pm	01579 382762
Post Office	Wednesday 10:30 - 11:30	
St Ive Snooker Club	Monday & Thursday 7:00pm	01579 382315 R Bunkum

St Ive Institute available for hire. £3 per hour. This includes the use of the kitchen & electric (excluding wall heaters which operate on a £1 coin meter)

Contact Jill Ede 01579 384095

Hall meetings will now be held bi-monthly on the second Tuesday of the month



ST IVE & DISTRICT GARDENING ASSOCIATION



Meetings in St Ive Village Hall 1st Monday in the month at 7.30pm

Monday 1st Sept.

A tour of Cotehele gardens with Head Gardner Dave Bouch. Assemble in St Ive Car Park to leave at 6:30pm.

Monday 6th Oct.

Mark Meredith will talk about the Tamar Bridge

Monday 3rd Nov.

Simon Dell: A talk on Tin Mining and the Stannary Laws

Monday 1st Dec.

George Kestell will demonstrate how to take cuttings and propagate plants



Visitors and new members are always welcome to join us.



ART AND CRAFT GROUP

We are a small friendly informal group who enjoy doing art and craft. If you paint or do any type of craftwork and would like to join us we'd love to welcome you.

There is no 'teaching' but help/advice is always forthcoming!

We meet at St. Ive Institute Hall from 1.00pm to 5.00pm Tuesday afternoons.

Only £3.00 for the afternoon plus 50p for tea/coffee and biccies.

If you are interested please give Jackie a call on **01579 362216**.⁵⁹

We look forward to meeting you.

Millennium House



CAFE

Hot & Cold Lunches Snacks & Drinks

All day Breakfast
Jacket Potatoes
Bacon Rolls
Chocolate
Hot & Cold drinks
And much more

Salads
Quiche
Chips
Cakes

Opening Hours

Mon, 9.00am - 2.00pm
Tues & Wed 11.00am - 2.00pm
Thurs & Fri. 11.00am - 2.00pm

***PLEASE NOTE
REVISED
OPENING TIMES***

Millennium House 01579 363096



Millennium House

THE MEL

Licensed Bar Free House

Opening Hours

Mon - Thu - 5 pm to 11 pm
Friday - 4 pm to 11 pm
Saturday - 12 noon to 11 pm
Sunday - 12 noon to 11 pm

Millennium House 01579 363096

