

THE PARISH PUMP



January 2019
Edition 446



The Newsletter for the Parish of St Ives



Bah Humbug The Musical (see page 7)

Disclaimer

The articles appearing in this magazine do not necessarily reflect the views of the Parish Council nor of the Parish Pump Editor.

Parish Councillors Telephone List

| | | | |
|--|--------------|------------------------|--------------|
| Peter Haines (chair) | 01579 362459 | Alan Moss (vice-chair) | 01579 362064 |
| James Bruce | 07411 192645 | Marlene Carr | 01579 362919 |
| Martin Corney | 01579 382450 | Angie Haines | 01579 362459 |
| Rosemary Farley | 01579 384810 | Tony Hodson | 07973 536964 |
| Nigel Libby | 07968 891814 | Kath Parkes | 01579 362005 |
| Ivor Vaughan | 07979 934604 | Craig Vaughnley | 01579 364083 |
| Sharon Daw (Cornwall Councillor) 07837 379305 slash.dash.daw@gmail.com | | | |

Meetings of St Ive Parish Council

2nd Monday monthly: Parish Council Meeting, alternating between St Ive Village Hall and Millennium House (please refer to notice boards for the agenda showing start time and venue each month). Any changes to the regular dates (i.e. Bank Holidays etc.) will be publicised accordingly.

4th Tuesday Monthly: Parish Council Planning Committee Meeting, 7 pm at Millennium House Pensilva, followed by the Parish Council Finance & Administration Committee Meeting commencing at 7.30 in the same venue.

Date of Next Parish Council Meeting

Monday, 14th January 2019



Devon & Cornwall Police
Building safer communities together



101

Minicom 18001 101

Police Community Neighbourhood Office

Your Community Support Officer is PCSO Bex STEED 30169.

email: CIOSNBMLiskeard@devonandcornwall.pnn.police.uk

To report a crime call 101 or go to www.devon-cornwall.police.uk

In an emergency call 999

Contact details for St. Ive Parish Council and for Millennium House

Address for correspondence: Millennium House, Century Square, Pensilva PL14 5NF

General Parish matters should be raised initially with the Parish Clerk, Jenny Hoskin, who will present them to the Parish Council.

Telephone: 01579 363096, email: stiveparish@btconnect.com

For accounts matters for the Parish and for Millennium House contact John Body, Finance Officer: 01579 362102, email: millenniumhouseadmin@btconnect.com

Millennium House enquiries and reservations: 01579 363096

email: millenniumhouse@btconnect.com.

On the web: Millennium House Website: www.cornwallvenue.com

Parish website: st-ive-parishcouncil.gov.uk Facebook: facebook.com/stiveparishcouncil

Parish Pump Information and Contact Details

To contact the editor please email: parishpump@btconnect.com

or phone the Parish office: **01579 363096**.

Hardcopy submissions by post or by hand to the Parish office, Millennium House.

Softcopy submissions: By email to the editor in MS Word, MS Publisher, pdf, Tiff or jpeg. Please use A4 pages and minimum 16 point font as the Pump is initially produced in A4 size and reduced to an A5 booklet at the printing stage. If in doubt please contact the editor.

Current Advertising Prices including VAT at 20%

Per issue: Quarter Page £7.50 Half Page £15.00 Full Page £25.00

10% discount for 12 months paid in advance.

Bargain Corner free ads by email to the editor or drop off at the Parish Office.

Deadline for the Parish Pump is STRICTLY 15th of every month

THE MEL BAR

Relax and wind down
at the Mel Bar, Millennium House



From the Editor

My sincere apologies for the mistake on the cover of the December edition - or was it the November edition? Things were a bit hectic and ... well, actually I have no idea how it happened.

Maybe the less I say the better, so I will just wish everybody a very happy new year. Let's all hope that it is a good year for our parish.

Joe

Trerosa Studios

Pottery & Woodturning activities for you to enjoy

Well equipped

All materials provided

Help / tuition from qualified teacher if required

01579 647247 or 07486 089466

Email: bob@trerosacrafts.co.uk www.trerosacrafts.co.uk

High quality professional tools

Small friendly atmosphere

Millennium House Opening Hours

Reception

9am till 2.30pm Monday to Friday

Community Coffee Shop

See separate notice on next page

Bar

5pm till 11pm Monday to Thursday

3pm till 11pm Friday

12am till 11pm Saturday and Sunday

If no-one is available please leave a message in our **letter box** at the front of the building or on our answer phone by calling **01579 363096**.

COMMUNITY COFFEE SHOP MILLENNIUM HOUSE, PENSILVA

Now open Monday to Friday!

| | |
|-----------|-------------------|
| Monday | 10.a.m. to 1.p.m. |
| Tuesday | 9.a.m. to 1.p.m. |
| Wednesday | 9.a.m. to 1.p.m. |
| *Thursday | 9.a.m. to 1.p.m.* |
| Friday | 9.a.m. to 1.p.m. |

*Incorporating a Coffee Morning from 10.a.m. to 12 noon. To include free raffle ticket per week - raffle drawn end of each month.

Open to small groups (pre booked) for Cream Teas - Buffet - Lunch Bites



Collection point open every day, 10am to 4pm in St John's Church, Pensilva.



**BOOK YOUR CHRISTMAS PARTY AT
MILLENNIUM HOUSE ON A FRIDAY OR
SATURDAY IN JANUARY OR FEBRUARY
FOR AS LITTLE AS £10**



**Supporting Guiding & Scouting Activities in Pensilva
200 CLUB Draw Results for November**

**1st No. 83
Mrs L Rendle**

**2nd No 172
Mrs P Thomas**

**3rd No 50
Mrs B Henderson**

Thank you for your support

CHAIRMAN'S COLUMN

Well here we are in 2019 and the time to relax a bit after the lead up to, and the actual, Christmas festivities. I hope you all had a nice time and that you will all have a good new year.

It was nice to see a good gathering for the carols around the Christmas tree at Millennium House. The tree decorations made by Kiddie winks nursery and several individual children were excellent, A big thankyou to all of them. The hot chocolate and mince pies also went down well during the informal singing by the choir inside Millennium House afterwards. We had many requests to do it again next year, so I hope we can.

Its nice to see that the team organising the new bus shelter at Belmont Park managed to get it in place before Christmas and the start of the worst of the winter weather. Well done.

The installation of the electric car charging point at Millennium House, for use by the Age Concern hospital car service, is on target and due to complete early in the new year (weather permitting)!!

Well that's enough from me, so take care and stay safe in 2019.

Pete Haimes.

Message from Pensilva Community Association:

PCA is still alive - we have a charity number, which we means we can apply for funding for local projects. If you have an idea, please get in touch. We urgently seek volunteers.

Would anyone be interested in running a CRAFT SESSION on MONDAYS? PCA would be happy to cover the room rental charges for the first few months until a sizeable group is established. We know the demand is there, but there's no one to run the group! Please get in touch if you could help with this!

Email: james@makeuseof.com

Bah Humbug the Musical

To celebrate the Christmas season KS2 pupils at Pensilva Primary School put on their own production of a Christmas Carol called, 'Bah Humbug the Musical'. Children from year 3 up to year 6 took part with singing – including solos, dancing and many had speaking roles. All the children did a fantastic job in only a few weeks of rehearsals. A special mention must go to Eddie, a year 6 pupil, who took on the lead role of Ebenezer Scrooge and did an amazing job learning many lines and actions. The children performed to parents, friends and wider family members. Mrs Halliday stated, 'A big thank you must firstly go to all the children who were fantastic. Also a big thank you must go to all who provided costumes for the children, painted spectacular backdrops and provided many props and scenery. It was a real team effort from the staff, parents, children and wider school community to make it a big success, thank you.'



Parishioners may be interested in the Devon and Cornwall Alert service. This is a two-way community messaging system operated by Devon and Cornwall Police, helping them to connect with local communities. It tells people what is happening in their area and allows them to respond directly with any information.

I have joined the scheme myself, on behalf of the Parish Pump, with the idea of posting any relevant information here in future editions. However, the police recommend that everybody joins, and by doing so you would receive relevant information much more quickly.

I registered online here: <https://alerts.dc.police.uk> where you can also read more about the scheme.

I am grateful to Pensilva resident Andrew Collins for putting me onto this.
Joe (editor)

MEMORY CAFÉ

The Christmas season has been a busy time for the Memory Café just as it has been for everyone else.

Christmas dinner was at the Highwayman in Dobwalls. 24 members and helpers enjoyed a sumptuous carvery lunch with an exciting selection of desserts, which were enormous! Tea and coffee was served on arrival, and also after lunch, and the staff were friendly and helpful to all our members.

The December Café afternoon was enhanced by the choir from Pensilva School coming to sing a variety of Christmas songs and carols. The Twelve Days of Christmas was sung with lots of gusto and much laughter. The children made the event memorable for everyone present. We thank all of them and the staff who lead and encourage them. It was a great gift before Christmas.

All at the Memory Café wish you a happy and, most of all, peaceful New Year.

Geoff.

St Ive & District Gardening Association

The speaker at our last talk of the year was Tricia Howard from Hidden Valley Gardens sharing her love of Fantastic Ferns. We learned that though ferns pre-date the dinosaurs they are now back in fashion in our gardens. There are 70 species in U.K. alone and they happily grow in more difficult and shady spots so it's well worth trying some .

We will be having our annual lunch on 12th January at The Royal Inn at Horsebridge, then starting the year with a talk about The Tamar Valley on Monday 4th February at St Ive village hall at 7.30pm. Visitors are always welcome.

PENSILVA WI DECEMBER REPORT

Christmas is the time for meeting up with friends, eating too much and having fun, which is exactly what the members of Pensilva WI did this month. Firstly it was the Christmas lunch at Trethorne where following a lovely meal Father Christmas called in and gave everyone presents. This was followed a few days later by the Christmas party, with family and friends joining us for both events.

The spread for the party was up to the usual WI standards and everybody soon tucked in. There were the obligatory games – Irish Bingo (Last man standing) organised by Jane and Bingo run by Verna. We then sang some Christmas songs with Don Wherly playing the organ. A great evening thoroughly enjoyed by members and guests alike.

Birthday girl this month was Pat Bates and everybody sang Happy Birthday.

Dates for your diary:

Saturday 18th January – Centenary Kick-off Buffet Lunch at Chy Noweth

Saturday 23rd February – Centenary Cake Fest, 10.00-12.00 noon.

Saturday 9th March – Bodmin Gaolbirds 6 corner day

The first meeting of 2019 will be held on Wednesday 9th January at 7.15pm at Millennium House where the speaker will be Tina Barrett from the Cornish Gansey Co. Why not make a New Year's Resolution to join the WI and come along to hear Tina, you will be made most welcome.



THE Growing Project

PENSILVA

We hope you are reading this at the beginning of the new year after a peaceful Christmas !

There are some months when the goings on at The Growing Project are quite routine and I feel there isn't much to write about, December has not been one of those quiet months !

We started the month with plans for trenches being dug to install the project's own water and electric supply separate from Kenwyn. The first day the digger broke down, twice in fact !

I am writing this article overlooking a half dug trench that is rapidly filling up with rainwater, our volunteers have worked hard with the areas that needed to be hand dug and have been barrowing gravel to fill the trenches before the water pipe, more gravel, and the electric cable are put in, closely followed by more gravel and then the soil filled in. This will all likely be completed around the time you read this.

Also in the next few days we will be holding our annual Christmas dinner for our volunteers to thank everyone for their efforts throughout the year. We all contribute a dish with several made from our own produce and a good time is had by all.

We are also planning and getting ready to pack our Christmas veg boxes. We have had a dramatic increase in orders since last year and I am currently working out what produce we have ready to be picked and what we will have to order in. At the moment it is looking like 10kg of sprouts and 20 of each type of cabbage, along with our own homegrown celery and purple sprouting broccoli. Our Christmas veg boxes will have been delivered on the 21st of December so that everything is fresh for Christmas, and then we will have had a week long break until around the 1st of January .

We have plenty of our own produce along with other locally grown organic produce available on our purple stalls including our lovely purple sprouting broccoli which we have started picking.

Our contact details are : Email: growingprojectpensilva@gmail.com

Phone: 07398 828783 for veg. box orders. 07854 353865 for project admin.



Volunteers Christmas Dinner at the Growing Project

Jumble Sale

At Pensilva Village Hall

On Saturday March 9th, 2019 from 2.00pm

***** Raising funds for the Village Hall *****

If you wish to donate, please contact Jackie Browning on **01579 363212** or email **peterpensilva@gmail.com**. We can collect.



SEW, KNIT AND NATTER.

WHY NOT JOIN US ON

THE LAST TUESDAY OF EACH MONTH

for sewing, knitting or just for a chat and a cup of tea or coffee and cake.

We meet at ST JOHN'S CHURCH, PENSILVA from 2pm to 4pm.

FRIENDS OF PENSILVA HEALTH CENTRE

A MEETING WILL BE HELD AT MILLENNIUM HOUSE, PENSILVA
ON TUESDAY 15TH JANUARY 2019 AT 2.P.M.

OUR HEALTH CENTRE IS A VITAL RESOURCE

THE MEETING IS OPEN TO MEMBERS OF THE PUBLIC
WE WOULD WELCOME SUPPORT - (THREE MEETINGS PER YEAR)

Pantomime Time Again

for the over 60's.

Liskeard Lions present

TREASURE ISLAND

Friday 25th January

The Public Hall, Liskeard.

A bus will pick up from **Glen Park, the Shop,**
and **The Cross, Pensilva, at 6.00 pm,** and from
St Ive Village Car Park at 6.15 pm.

To book ring Ivor & Jean Hoare on 362531

by the 20th January.

Free to senior citizens.



christians
against
poverty

CAP

St John's Church Pensilva

*Events to raise funds for
Liskeard & District*

Christians Against Poverty

Friday 4th January
Afternoon Tea
3.00 pm
Penharget Cottage

Saturday 9th February
Coffee Morning
10.00 am
St John's Church

always hope.

Ruth and Colleen's Monthly

BINGO

At Millennium House

on Tuesday January 8th

Then on February 5th

Eyes down at 7:30pm

Over 18's only

£££ CASH PRIZES £££

LET'S MEET (chat and eat!) @Gorfenna LUNCH CLUB.

St. Ive, PL14 3LX

A chance to meet up and socialise. All welcome.

Every first Monday of the month

11.30 - 2pm

£2.50 pay on the day.

01579 384810



Call for information or just come along.

A friendly welcome, a warm lunch and conversation await!

www.gorfennacommunity.co.uk



PENSILVA MEMORY CAFE

DO YOU HAVE MEMORY PROBLEMS OR CARE FOR SOMEONE WHO DOES? WHETHER IT'S MILD, MODERATE OR SEVERE YOU CAN SOMETIMES FEEL A BIT ISOLATED AND ALONE.



DON'T BE LONELY. KEEP SMILING. THERE ARE MANY OTHERS LIVING WITH THIS CONDITION.

COME AND JOIN US ONCE A MONTH FOR SOME FUN AND LAUGHTER, MUSIC & REMINISCENCES.

WE MEET ON THE FOURTH THURSDAY OF EACH MONTH AT ST JOHN'S CHURCH FROM 2PM – 4PM.

WE ALSO SUPPLY TEA/COFFEE AND CAKES.

DONATIONS OF £1 PER PERSON APPRECIATED

FOR MORE INFO PHONE PAT 01579 363461

OR CAROLYN 01579 362698

Art Classes *with Yvette*

Millennium Centre, Pensilva.

If you have always wanted to Sketch or Paint 'Why Wait'??

*Come and Join one of my classes, they are fully structured,
suitable for both beginners and improvers.*

Kick start your hobby in a 'friendly and relaxed' atmosphere, aimed at 'enjoyment'.

Drawing Class - Wednesday Mornings 9.30am to 12.30pm

Watercolour Art Class - Wednesday Afternoon 1.30 to 4.30pm

Other Classes & One day workshops or demonstrations also available.

Contact Yvette on 07886 343621 or

email: yvettewiltshire@sky.com website: www.artwithyvette.com

St Ive Church Produce Market **NO PRODUCE MARKET IN JANUARY**

The date for next year's Pensilva Carnival has been set for 6th July, 2019. Please get in touch with the Events Group to volunteer (phone Karen on 362196 or email James on jamesbruce@makeuseof.com). We cannot go ahead next year without more help!

The next Events Group meeting will be on Wednesday, January 9th, 2019, 7:30pm at Millennium House.

PENSILVA WEDNESDAY CLUB R.V.S

**Meet in Pensilva Village Hall at 2.30.p.m. on alternate
Wednesdays**

**All Adults welcome to join - £1 per meeting –
Refreshments - Various activities - Entertainment -
Coach Trips - Raffle**

Info: please contact Jean Connor 01579 363221

Pensioners Lunch

**2 Course Meal plus Tea or Coffee
Only £5.50**

**Every Tuesday here at Millennium House
Speak to our reception or
telephone Millennium House on 01579 363096**



**So why not join us for Good
Food and Good Company, all on
the day you collect your
pension?**

MOBILE LIBRARY

The County Mobile Library visits our area once a month on Fridays of “Week 3” (NOTE: not necessarily the 3rd Friday of the month).

Next visits: Jan 18th, 2019

Then Feb 15th, Mar 15th, Apr 12th, May 10th, Jun 7th.

Stops at:

**The Victoria Inn, Pensilva, 10.25- 10.45am;
Quethiock bus stop. 11.00 to 11.20am.**



Badminton?

Come and join our relaxed and friendly group at Pensilva Millennium House

Mon & Tue 7.30 - 9.30pm

Friday 8.00 - 10.00pm

For further info phone

Nigel or Carol on

01579 363594 or

07885 798370

All Being Well

Your local, friendly gym.

Over 18 years working in our local community to improve health, fitness and well being. Call **01579 363890**, drop in at Millennium House, Pensilva, or email abwgym@gmail.com

Opening hours:

Mon/Fri 10am-3pm & 5pm-9pm

Wed 10am to 3pm

Tues/Thur 9am to 1pm

Saturday 10am to 1pm

Ask about GP exercise referrals!

PENMILL ART GROUP

We are a small, friendly group using all art mediums. If you paint we would love you to join us.

We meet at

Millennium House

10-2 every Friday.

Please come & see us or phone Pam on **01579 363441.**

LISKERRET MALE VOICE CHOIR

We are currently looking for new members in all sections. No previous experience necessary.

Practice Mondays 7:30pm at the Royal British Legion, Liskeard.

Enquiries to the secretary on

01579 363881

Email: charaton@btinternet.com

Website: www.liskerretmvc.org

Charity No. 1120243

PENSILVA VILLAGE HALL

Anyone wishing to book the hall for meetings, birthday parties or fundraisers please contact Peter or Jackie Browning on **01579 363212** or email **peterpensilva@gmail.com**



Please note that as well as hall rent there is a coin meter for heating at 60p/hr.

We hold a Hall a users and committee meeting on the fourth Monday of every 2nd month starting in January at 7.00pm. Please feel free to come along and support us.

There will be a jumble sale on 9th March. Please contact Jackie if you wish to donate. We can collect.

Organisations that meet in Pensilva Village Hall

| Meeting Times | Organisation | Contact Person | Telephone |
|----------------------------|---------------------|-----------------------|------------------|
| Mon. 4:00 - 6:00 | Brownies | Mrs Martha Oliver | 01579 362239 |
| Alternate Wed. 2:30 - 4:00 | Wednesday Club | Mrs Jean Conner | 01579 363221 |
| Wed. 7:00 & various | Snooker Club | Mr Philip Bond | 01579 362091 |
| Thu. 6:00 - 8:00 | Guides | Miss Caroline Hambly | 01579 363228 |
| Fri. 1:00 - 3:00 | MIMS | Chris | 01579 343702 |
| Fri. 4:00 - 5:00 | Rainbows | Mrs Lynne Bond | 01579 362091 |

St Ive Institute & Village Hall

| | | |
|-------------------------|--|--|
| Every Wednesday | 10:30am to 12 noon 10:30am to 11:30am | Coffee morning Travelling Post Office |
| First Monday | 7:30pm | St Ive Gardening Club |
| Every Monday & Thursday | 7:00pm | St Ive Snooker Club |

PENSILVA GROUP MEETINGS NOW AT 10:00am, 5:30pm and 7:30pm.

be inspired
with
**Slimming
World**



MONDAY PENSILVA 10am, 5:30 & 7:30 pm
The Millennium Centre, Princess Road,
Pensilva, Liskeard PL14 5NF.
Tel: Hayley **07966 370233**

TUESDAY LISKEARD
9:30am, 11:30am, 5:30pm or 7:30pm
Lower Hall, Church St., Liskeard
PL14 3AQ. Tel: Vicki **07973 402829**

WEDNESDAY LISKEARD 9:30am
Liskeard & District Sports Association,
Lux Park Coldstyle Road Liskeard
PL14 3HZ. Tel: Sammy **07807 289801**

THURSDAY DOBWALLS 5:30 or 7:30pm
Dobwalls Football Club Dobwalls Liskeard
PL14 4LU. Tel: Sammy **07807 289801**

FRIDAY GOLBERDON 9:30am
Golberdon Village Hall Nr Callington
PL17 7ND. Tel: Jane **07769 734316**



slimmingworld.co.uk



BRIGHT SKY HOME SUPPORT (Pensilva area)

would like to offer a trusting, helpful service in a cheerful, friendly way
for
occasional sessions / short-term regular support / extended support
with

Personal Care
Practical Support in the Home

Carers / Family Support
Help with De-Cluttering

For further information please contact Angela on: Mobile 07484 853760
Fully Qualified Health & Social Care Professional , DBS CHECKED - FULLY INSURED
Email angela.hooper2@btinternet.com

DO YOU NEED A HELPING HAND?

Reliable, friendly,
experienced, mature
local resident offering
the following services:

Cleaning Ironing

Shopping Light Gardening Dog Walking

CRB/DBS checked and fully insured. Competitive rates.

Contact Jess: Telephone or text: 07934 764 327.

Email: homeangel77@yahoo.com. Find us on Facebook





Westcountry HOME CARE

We can help you to get the most out of your life by delivering personalised care from daily visits to 24 hr care.

By working together we will find the right care services for your Individual needs

Speak to us to claim your free visit*

Our Team Is Your Team

www.westcountrycare.co.uk

 @WCHCLTD

01579 342256
01566 775960



CareQuality
Commission

Good

*T&C Apply

PENSILVA HEALTH CENTRE - PATIENT PARTICIPATION GROUP

We are a group of patients who meet regularly with the Health Centre to bring forward for discussion ideas, comments and suggestions about your surgery. In the past we have held open days, helped at the flu clinics and participated in a trial People's Commissioning Board Project.

We also organise a Carer's and bereavement group (see below) and a 'Walking for Health' group

(Contact Marlene Carr 362919).

You can contact us directly or through the Health Centre.

PENSILVA HEALTH CENTRE CARERS AND BEREAVEMENT GROUP

Are you a carer, bereaved or lonely? Then come along and join our Group. Tea, Coffee and plenty of friendly chat and, when possible, local trips to various venues.

**Meetings are held every third Thursday of each month at 11.30.a.m.
Meet in Millennium House car park.**

For any information please contact Jean Connor 01579 363221



Struggling with Sight Loss?

iSight Cornwall offers practical help to people living with sight loss in Cornwall including:

Low Vision: Advice for low vision aids

Assistive Technology: Advice on products

Benefits Advice: Assistance to claim entitlements

Equipment Demonstration: Advice on gadgets

Social Clubs & Activities: Links to clubs & activities in the county

For more details Telephone 01872 261110 or visit

www.isightcornwall.org.uk

**NHS
REGISTERED**



**SUPPORTED BY
LOCAL DOCTORS**

Do you suffer with various long term health conditions?

Come along and join our small, friendly group.
For company, light exercise and support.

Upstairs in Millennium House every Monday from 12.30pm - 2.30pm

For more information contact us:



Pauline **07437 195862**

Jeanette **01579 363691**

The **co-operative**
Community Fund

★ NEW OWNERS AT VICTORIA INN ★

New lunch and Evening menu

Brunch Fridays & Saturdays from 9.30am – 11.30am

New Opening Hours

| | | |
|------------------|-----------------------------|------------------------------------|
| Monday | Closed all day | |
| Tuesday | | 5pm to 11pm |
| Wednesday | | 12pm to 3pm and 5pm to 11pm |
| Thursday | | 12pm to 3pm and 5pm to 11pm |
| Friday | 9.30am | to 11pm |
| Saturday | 9.30am | to 11pm |
| Sunday | | 12pm to 7pm |

Tuesday Curry night and full menu. Thursday night 2 for £12

Quiz - 2nd Tuesday every month - Teams of 6



LIVE MUSIC EVERY MONTH
CALL – 01579 363933



St Ive Methodist Chapel

Services for January 2019

| | | |
|---------------------|------|--------------------------------------|
| Sun 6th Jan | 11am | Rev C Tomlinson with Communion |
| Sun 13th Jan | 11am | United Covenant Service at Blunts MC |
| Sun 20th Jan | 11am | Rev Iris Bray |
| Sun 27th Jan | 11am | Mrs H Pengelly |
| | 5pm | Food for Thought at St John's |

For regular updates on Services etc at Chapel as well as around the area look at the St Ive Methodist Church Facebook page.

"Village Churches Together" group will meet 7.30pm @ St Ive Methodist Church on Tuesday 15th January. Everyone welcome, more details from Keith on 01579 382334

The Chattermakers Craft group will meet on Thursday 10th and 24th January in the Guildroom at 7:30pm. This is a group open to anyone who likes to do any craft and would like to share with others of like mind (hence the "chatter" bit. Anyone wanting more details please contact Kathryn on 01579 382334. All welcome.

The Village Church Prayer meeting will also be held at St Ive Chapel on Thursday 3rd, 17th and 31st January from 7.30pm. All welcome.

St Ive Church

Services at 11:15am Every Sunday

| | |
|----------|---|
| Jan 6th | Holy Communion |
| Jan 13th | Morning Worship |
| Jan 20th | Holy Communion Lunch follows this Service |
| Jan 27th | Family Service <i>Small pets welcome</i> |

Other January Events

No Produce Market this Month next one Friday February 1st

Sun 21st Lunch in Church 12:45pm All Welcome Only £7 for 2 courses

Church Wardens Brian Dwelly 01579 364010 btdwelly@aol.com

Colin Catchpole 01579 383867 ccatchpole@hotmail.com

Please let the Churchwardens know of anyone needing a home or hospital visit

Donations for Liskeard Food Bank can be left in the Church each day between 10am & 4pm

ST JOHN'S CHURCH, PENSILVA

Services for January 2019

Anglicans and Methodists share services at 11 am each Sunday, coffee served before service

| | | |
|-------------|------------|---------------------------------------|
| Sunday 6th | 11am | Rev Sue Hill, Covenant Service |
| Sunday 13th | 11 am | Café Church |
| Sunday 20th | 11am | Anglican Service |
| | 5pm | Food for Thought |
| Sunday 27th | 11 am | Rev. Chloe Jones |

Café Style Church followed by coffee and chat, Thursday mornings 10am.
Everyone very welcome.

Afternoon Tea on Friday 4th at 3pm in aid of **Christians Against Poverty** (CAP) at Penharget Cottage, Bring and Buy. Come along and support this worthy cause. Contact Frances at 363718 for details.

Rural Churches Together meeting, Tue 15th Jan 7.30 at St. Ive Methodist Church.

Joint Leadership meeting Wed. 16th Jan. 1.30pm at St. John's Church

Memory Café Thursday 24th January, 2-4pm in St. John's Church

Fellowship Group, Friday 11th and 25th January . Contact Carolyn on 362698 for further details

Prayer Group 2pm Friday 18th January Please ring Eileen on 362580 Carolyn on 362698, if you would like prayer for yourself or someone else.

For further details of the Services held in St John's, if you know of any illness or need in the village or if you would like your wedding or baptism in the church, please ring: Geoff Cox, 362698 or Frances Tucker, 363718

Alford Joinery - For all your joinery needs

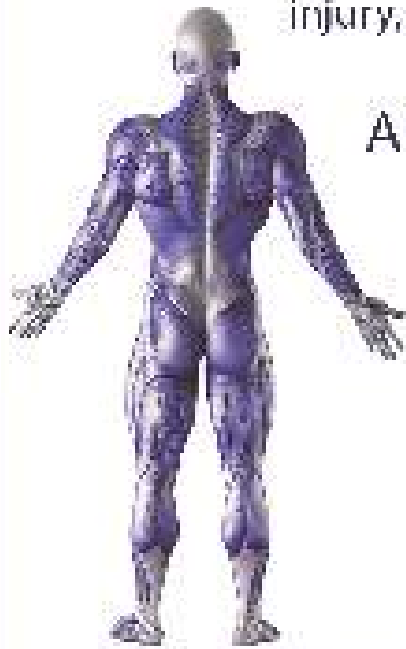
Specialists in bespoke doors, windows, staircases, conservatories, etc.

- 20 years experience
 - Large or small jobs
 - All joinery hand-crafted
 - Top quality FSC certified timbers
 - All joinery can be fitted if required.
- 01208 873444 or 07757 666460
info@alfordjoinery.com
www.alfordjoinery.com

QUALIFIED RAYNOR MASSAGE THERAPIST

RELAXING AND THERAPEUTIC DEEP TISSUE MASSAGE TREATMENTS

Effective for many different types of chronic pain, sports injury, stress and tension related problems



APPOINTMENTS AVAILABLE AT

THE WELLBEING CENTRE
LISKEARD 01579 344090

THE NATURAL WAY
LISKEARD 01579 345300

Contact : Tina North
Phone : 07720 832322

tina-north@massage-therapy-cornwall.co.uk



R J Gardening & Handyman Services

All aspects of gardening and handyman work undertaken.

- ~Local and Trustworthy
- ~Hard Working
- ~Reliable and Experienced
- ~No job too small
- ~Competitive rates

Contact Raymond on:

07541 229064 or 01579 347622

raymond_pearcegb@yahoo.com

Find us on Facebook.





R&C



Groundworks and Landscapes

| | |
|------------------------|-----------|
| Fencing | Patios |
| Paths & Steps | |
| Turf & Astro turf | |
| Driveways | Rendering |
| Retaining walls | Decking |
| Digger work | |
| Footings & foundations | |

And more

Free no obligation quotes

Call Rob on:

**07518246666 or
01579 641802**

Window Cleaner Window Cleaner

Also any upvc cleaned

i.e. fascias, gutters, etc.

gutters cleared & unblocked

Please phone Rob

07709 053464

Window Cleaner Window Cleaner

Save Costly Energy!



SOLARTEC Windows &
Conservatories Ltd

**'A' Rated WINDOWS & DOORS
at BEST PRICES EVER!**



Professionally fitted and finished by us with a

FENSA REGISTERED 10 year ins. guarantee.
In all colours



NEW

**FACTORY SHOP
SUPPLY ONLY**

For all your windows, doors, conservatories,
fascia, trims, guttering and sealants

**7-10 DAY TURN AROUND ON WINDOWS,
DOORS and CONSERVATORIES**

TEL: 01579 343425

FAX: 01579 344500

WEBSITE: www.solartecwindows.co.uk

EMAIL: sales@solartecwindows.co.uk

KEEPING JOBS IN CORNWALL



PJR Garden Services

Phil Rule

All aspects of garden
work - grass / hedge
cutting, patios, fencing
etc.

Mobile 07387 449004

Tom Marshall

TM Plastering

Plasterer and Property Care

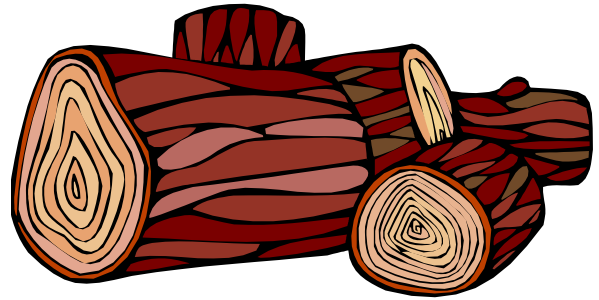
07544819284

Tommarshallcornwall@gmail.com

Free estimates

- Internal plastering
- Internal / external rendering
- Damp proofing
- Stud Walls
- Patio laying
- Chimney repairs
- Pointing
- Painting

SEASONED LOGS



MIXED LOAD

or

HARDWOOD

Tel. Jonathan

Mobile 07966 070725

or

01579 363157

DAVID HEWETT GARDEN SERVICES

For all aspects of garden care:

lawn mowing, grass cutting,

strimming, hedge cutting,

clearance, and more.

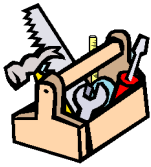
01579 363796

25 years experience.

Fully insured.

KEEP IT TIDY

General Property Maintenance
including Decorating, plus Electrical



HONEST PRICE
for
QUALITY WORK.



No Job Too Small

Kit Rickard

18 Higher Glen Park
Pensilva

Phone: 01579 363378

Mobile: 07855 699071

Email: KITKeepItTidy@hotmail.com

Chiropodist

Fully qualified, experienced and
insured Chiropodist/Podiatrist

- Nail cutting, corns/callus,
diabetic foot care etc
- Personal home visits, groups
and residential homes

Contact Clare:
07757973709



DOG GROOMING

40 YEARS EXPERIENCE



SMALL and MEDIUM Dogs
Groomed to Your Request

LISKEARD AREA
Inquiries Welcome

Call Patricia: 07517 658862
TO YOU OR TO ME



Domestic Electrical
Property Maintenance
Interior & Exterior Work
Carpentry :: Decking
Kitchens :: Bathrooms
Wall & Floor Tiling
General Plumbing

MCCARTHY PROPERTY MAINTENANCE

Electrical Safety
Register incorporating
ELECSA  ECA
Certification Ltd

HIGHLY REGARDED LOCAL BUILDER
COMPETITIVELY PRICED
COVERING THE SOUTH WEST

Contact Dominic

07968 599 675

01579 362 945

info@mccarthypropertymaintenance.co.uk

www.mccarthypropertymaintenance.co.uk

Alphaplas Limited t/a
Trims&Windows

www.trimsandwindows.co.uk

Double Glazed uPVC
Windows-Doors-Conservatories
'Conservation' vertical sliders a speciality



Supply only to Trade & DIY or
Full installation registered with

FENSA inc
10yr insurance backed guarantee



Email: alphaplas@btconnect.com

01752 840078

Installation team based in
Pensilva, Looe & Torpoint

Owna

Mobile Device and PC repair

07766013897

alex@owna.co.uk



For repair of mashed mobiles, trashed tablets, or poorly PC's visit www.owna.co.uk or call Alex for a free quote, no fix no fee

MARK FITCH CHIMNEY SWEEP

- * BRUSH & VACUUM
- * CLEAN, RELIABLE SERVICE
- * COVERING ALL S.E. CORNWALL
- * DISCOUNT FOR MULTIPLE CHIMNEYS
- * COWLS & GUARDS FITTED
- * STOVES SERVICED



*Call
Mark on:*

01579 350762
07773 462643





Affordable Counselling

Caring, confidential,
non-judgemental

- Increased confidence and self esteem
- Help to cope better at difficult times
- Improved relationships
- Clarify confused thoughts & feelings
- Assertiveness
- Personal insight
- Improved emotional health
- Available for youth and adults

Isabelle McGarahan BA, PGCE
Dip in Therapeutic Counselling,
Accredited ACC, DBS cleared
www.im-counselling.org email:
isabelle@im-counselling.org
01579 344090/07857326229

ADVERTISE HERE!

This box for **just £7.50 per month** including VAT.
10% discount for a 12 month order. i.e. **£5.63 + VAT** per month for 12 mths

See the full tariff on page 3

One thousand copies per month distributed free of charge to households in the Parish of St Ive.

PENROSS

Rosecraddoc Lodge Holiday Bungalows
(Between Pensilva & Liskeard)



Ideal for visiting family and friends !
Refurbished in 2018. Sleeps 4. Electric, heating, bedding and towels inc in rent. Patio. Free wi-fi. Follow us on Facebook.

Sorry no pets and no smoking.
Contact Julie Tucker 01579 362221 or
penhargetfarm@gmail.com
for 15% discount

NICOLA GREENE

BSc (hons) Podiatry MChs

HPC Registered Chiropodist/Podiatrist

Home Visit Practice treating all your foot care needs:

- Nail Cutting
- Corns and Calluses
- Thickened Nails
- Dry Cracked Skin
- Verrucae
- Foot Pain
- Diabetic Foot Assessments
- Wound Care

T: 01579 590027

T: 01752 291565

M: 07786164205

E: nicki_greene@yahoo.com

Group Travel

Enterprise Park, Midway Road, Bodmin
Cornwall PL31 2FQ. Tel: 01208 77989



BODMIN M.O.T. CENTRE at Group Travel

Class 4, 5 and 7. Trade enquiries available upon request. Tel: 01208 77989

2019

26th APR– 1st MAY - ISLE OF MAN SPRING TOUR

PLUS LOTS MORE OF EXCITING EXCURSIONS INCLUDING
EXETER CANAL CRUISE.

16 TO 70 SEAT COACHES AVAILABLE FOR PRIVATE HIRE. CORPORATE/ VIP, EVENTS & CONFERENCES, WEDDINGS (CAN INCLUDE STAG & HEN PARTY PACKAGE), HOLIDAY TRANSFERS, FUNERALS, DAYS OUT, GROUP TOURS, GOLFING HOLIDAYS & SPORTING EVENTS.

FOR BOOKINGS AND A BROCHURE PLEASE CALL

01208 77989 / 01208 72669

Website: grouptravelcoachhire.com Email: benneymoon@btinternet.com

Martin Hoare – Local, Reliable, Competitive



WHEEL DIGGER FOR HIRE
ALSO AVAILABE 'BREAKER'
AND NEW CONCRETE
'CRUSHER BUCKET'

ALL AT COMPETITIVE RATES

GROUND WORKS
DRAINAGE
NEW DRIVEWAYS
SEPTIC TANKS &
'SOAK AWAYS' INSTALLED



LASER LEVEL FOR HIRE
QUOTES AVAILABLE



Phone 01579 363517

or

Mob 07863 291213



INDEPENDENT
FAMILY
FUNERAL
DIRECTORS



Undertaking your individual
needs with efficiency,
compassion and care...

Perfect Choice Prepayment
Funeral Plans from £3249.00

(Prices correct as at 01.01.2019)

01579 362358



Avalennek, Caradon Town,
Upton Cross, Liskeard
Cornwall PL14 5AR
Telephone 01579 363598
Mobile 07901 538132
chrisrounsevell@tiscali.co.uk

HOG ROAST EQUIPMENT HIRE AND MEAT SUPPLY

Hog Roasts For Those Special Occasions
Self Catering or Hassle Free Service
Everything done to your special requirements

CHRIS ROUNSEVELL
TRADITIONAL BUTCHER



Local Accountant offering fixed fee accounting services

With over 20 years experience, I am a fully qualified, friendly, local accountant

- ✓ Annual Accounts for Sole Traders and Partnerships
- ✓ Book Keeping & Payroll
- ✓ Personal Tax Planning
- ✓ Company Accounts
- ✓ Business Support & Advice

- ✓ Self Assessment tax returns
- ✓ iXBRL tax filing
- ✓ Tax investigation Fees Insurance
- ✓ Company Secretarial work
- ✓ Tax calculations for Sole Traders and Partnerships

Kate Vaughnley FCCA - Chartered Certified Accountant

Website : www.kvaccountingsolutions.co.uk or Email : katevaughnley@gmail.com
Telephone : 01579 364083



GRAB LORRY HIRE

PLANT HIRE & GROUNDWORKS

07970 270218 | 01579 344402

**MORE COST-EFFECTIVE THAN SKIPS
FOR SOIL, RUBBLE & GREEN WASTE
REMOVAL!**

CAN REACH OVER WALLS &
FENCES FOR COLLECTION
FROM INACCESSIBLE AREAS

SKIP BAGS AVAILABLE FOR
SMALL JOBS



Come and visit our recently updated
Tile & Bathroom showroom in PENSILVA

We offer a generous discount to all Pump Readers

Unit 24 Pensilva Ind Est, St Ive Road, Cornwall PL14 5RE 01579 362264



CORNWALL TILE
CENTRE

Pensilva Showroom

Open Mon - Fri 8.30am - 5pm
Saturday 9.00am - 1pm

Tiles & Mosaics for:

Bathrooms & Kitchens Living Areas Conservatories
Patios & External Areas Wet Rooms & Spas Swimming Pools
& All Commercial Applications

 atlas concorde

www.cornwalltile.com

OPEN FOR RETAIL, TRADE & COMMERCIAL ENQUIRIES



The
**RACEHORSE
INN**



Gastro Pub

Head Chef Phillip Bradshaw

Ray and Flori welcome you to
the Racehorse INN

A fine food experience in a convivial
atmosphere

Our superb Sunday lunch is one to be tried

Open Every Day for Lunch and Dinner

info@racehorseinn.co.uk
www.racehorseinn.co.uk

Take-out: Pizzas & Fish'n'Chips now available



North Hill Village, Cornwall, PL15 7PG

01566 786 916

J. H. Simmons

Painting & Decorating



No Job Too Small

For more information
Please call John
01579 362688

7 East Park, Pensilva

D.J.A. BUILDING SERVICES

ALL ASPECTS OF PROPERTY
MAINTENANCE BUILDING &
REFURBISHMENT

- * Bespoke Furniture and Kitchens
- * Wardrobes and Bookcases
- * Garden Sheds, Poultry Houses & Small Animal Shelters
- * Over 30 years' experience
- * Fully insured
- * References available
- * Free estimates
- * No VAT

**Call David on 01579
364050 / 07767662635**

Westwood Garden Maintenance



Antony Watts

Grass Cutting, Clearance

Weeding, Turfing

Hedge Cutting

Patio Cleaning, Planting

Regular Visits / One-off Contracts

Residential & Commercial

FREE ESTIMATES

01579 362019 www.westwoodgm.co.uk 07952 094472

WH BOND

BOND
TIMBER

BOND
AGRI

BOND
HIRE & SALES

BOND
FARMS



BOND TIMBER
BAKE SAWMILL
TRERULEFOOT
SALTASH
PL12 5BW

BOND HIRE & SALES
MOORDOWN
ST IVE
LISKEARD
PL14 3NA

BOND AGRI
UNIT 4
LITTLE TRETHEW
HORNINGTOPS
PL13 3PZ

01503 240 308
WWW.BONDTIMBER.CO.UK

01579 383 185
WWW.WHBOND.CO.UK

01503 240 171
WWW.BONDAGRI.CO.UK

Pensilva Stores

Amazing Value

Premier
a great deal more from your local store
Mon-Sat. 7:00 AM. – 9:30 PM.
Sunday 8:00 AM. – 9:30 PM.

- ✓ Fantastic Special Offers every month!!! (See store leaflets)
- ✓ Come and Check out our great deals on Wine, Beer and Spirits
- ✓ Local Produce: Homemade Butter and Clotted Cream, Meat from our local butcher
- ✓ Cornish Fresh Fruit and Vegetables
- ✓ Fresh Bread, Pasties and Cakes
- ✓ Take Away Coffee, tea and hot chocolate
- ✓ Newspapers and Magazines, Greeting Cards
- ✓ Paypoint, Lottery

*** Free to use ATM ***
*** Card Payment ***

Friendly Staff + Service with a Smile !!!

Pensilva Stores is a family run business who have been serving local people and visitors for more than 21 years.

Higher Road, Pensilva, Liskeard, Cornwall PL14 5NQ

Tel: 01579 362547

MENDOLOGY Garage Door Specialist

- Repairs
- Servicing
- Installations

Out of hours service
call Dave anytime 07974 442645


MENDOLOGY COMMERCIAL DOORS LTD

www.mendologydoors.co.uk

01579 363760

PensilvaCars

01579 363516

- ✓ MOTs Class 4
- ✓ Service
- ✓ Repair
- ✓ Tyres
- ✓ FREE Courtesy Car
- ✓ Car & Van Sales
- ✓ Diagnostics
- ✓ Air Conditioning
- ✓ 

We have offered a supply, fit & balance of tyre service for 10 years at competitive prices.

Most of our tyres can be supplied the same day.

LOCAL RECOVERY £45.00

www.pensilvacars.co.uk

pensilvacars@hotmail.co.uk

We can service and repair your car to manufacturer specification, keeping your dealer warranty without main dealer expense.





KEITH RICHARDS

Motor Body Repair Specialists

A family run business with fully equipped & maintained workshops & a focus on
Customer Care

- ◇ Motor Body Repair Specialist
- ◇ Mechanical Repairs
- ◇ Servicing to All Makes & Models
- ◇ Computer 4 Wheel Alignment
- ◇ 24 Hour Recovery Service
- ◇ Renovations & Re-sprays
- ◇ Member of RMI (Retail Motor Industry Federation)
- ◇ Latest Diagnostics (including specialists for VW, Audi, Seat, Skoda & Vauxhall)

With over 30 years' experience we aim to provide you with:- Value for Money -
Friendly Service - Professional Approach - Expert Advice that you Can Trust
(Visit our website for more details)

Pensilva Industrial Estate, St Ive Road, Pensilva, Liskeard, Cornwall PL14 5RE

Tel: 01579 362593

Email: keith@keithrichardsmotorbody.co.uk

Fax: 01579 363194

Website: www.keithrichardsmotorbody.co.uk

Wm. Newham & Sons Est. 1835

Proprietor Robbie Savill AWCB

CHIMNEY SWEEPS & BLACKSMITHS



CHIMNEY SWEEPING

BIRD GUARDS, COWLS & POTS FITTED

CCTV INSPECTIONS & SURVEYS

STACK REPAIRS & REBUILDS

RIGID STEEL SYSTEMS ERECTED

STAINLESS STEEL and PUMPED CONCRETE
CHIMNEY LINING

STOVES SUPPLIED, INSTALLED & REPAIRED

FIREPLACE ALTERATIONS & RENOVATIONS

FULL RANGE OF FIREPLACE FURNITURE
made to order

01579 347777

need somewhere to stay ?
between homes ?
family/friends visiting ?



ideal for Pensilva
& St.Ive

please call Jackie on
01579 362216

J.J.CHILD

PLUMBING AND HEATING ENGINEER

OIL AND GAS APPLIANCE SERVICE , REPAIR AND BREAKDOWNS

LANDLORD'S CERTIFICATES

OVER 25 YEARS EXPERIENCE
CALL JOHN ON 01579 362336
MOBILE 07837921086



502322

Bargain Corner Free Ads up to £50

Ads are free for items up to £50. £5 charge for items over £50. Please ring the Parish Office on **01579 363096** or leave a note at Millennium House reception or email **parishpump@btconnect.com**.

*****Please let us know when your item has sold*****

Morphy Richards 800watt 20 litre microwave oven. Silver, almost new and barely used. £45
Fridgemaster white under counter fridge 500mm wide. Very good condition. £39
Pensilva 01579 362207

Pine Bunk Beds H 4'6", L 6'. FREE.
01579 363679

2-Drawer Filing Cabinets (2) H 710mm, W 475mm D 620mm. Could deliver in local area £25 each
07796 091259

Electric **Hostess Serving trolley** with four warming dishes. **£45.**
01579 320401

Wooden **High Chair**, good condition. **£5.**
Heated **Towel Rail**, chrome, 800mm high, 400mm wide. **£10.**
01579 362012

1 x HAMA Omega Premium **photo/video tripod - £23**
1 x VELBON CX **Mini photo/video tripod - £15**
1 x Heiwa Sumo **Junior TH250 photo/video tripod - £10**
All items in very good used condition.
Pensilva 01579 362207

2 light wood **curtain poles** with rings. 142cm/56" L; 28mm/1.1" diam. **£3 each, £5 pair.**
Unused **pine shelf kit**. 200mmW; 600mmL. Still packaged. **£2**
Metal dome **lampshade**. Black with white interior. 30cm diam. £35 new - **£5**
01579 208836 (Pensilva)

4 **Cobblers Shoe Irons**, including a rare ladies shoe iron all in VGC. For use or ornamental displays. **£30.**
HP Deskjet Printer in VGC with 5 new HP 21 Black Ink Cartridges and 2 HP Extra large Colour Ink Cartridges **£45 ono.**
2 large size lightweight **camouflage military jackets. £10 each, £15 for both.**
Hardwood School Play Ground **Waste Basket Plant Display Holder** 26" high by 16" diameter. Hardwood slats on a galvanised steel wood frame and legs, which can be bolted to the ground. VG solid condition. **£10.**
015679 384658

Apollo FS24 **child's mountain bike** and helmet. Suit 8 - 10 year old. **£25**
01579 362581

Free standing **wooden screen** w/ opaque glass panels on top. 5'6" x 5'6". **£30.**
01579 362204

Concrete Coal Bunker **£20**
Heavy Duty Plastic Composter **£15**
01579 363892

Morphy Richards Breadmaker as new **£10**
Challenge Leaf Blower **£10**
Hand Mower **£5**
Giant Phone **£3**
3 Cocktail Glasses with Shaker and recipes **£15**
07969 310603

Sony **Home Cinema System** CD/DVD/ Tuner/Amplifier with 5 small wired speakers, sub-woofer and remote control. **£50.**
07841 717913.

Child's garden metal **swing** & accessories. **£15. 01579 362085**

AURA 3 Tent, colour Green; only used for 8 nights camping. Bought for £179.99 but offering it now for **£100** as I have had to give up camping.

Also the **matching Porch Extension** - BRAND NEW, never unpacked since buying for £99.99, but now for sale at **£50**. Real bargains. If you're interested in both, please make me a reasonable offer as I can no longer make use of them. **01579 362574** (Pensilva)
Please note corrected telephone number

Wood-framed **mirror** 2'6" x 3'7". **£10. 01579 363812**

Mobility Walker Hardly used. Cost about £80 new from Argos. Will sell for **£40**
18 **Demijohns** £1 each. **01579 362001**

Lec **Fridge**. Excellent working order. **£50**
Can deliver Pensilva area. **01579 363791**

4 frame honey extractor (plastic). Good order. **£45.**

Carpet shampooer **£6**

Dyson hoover **£5**
01579 320401.

Three wheel disability walker with bag and brakes. **£30. 01579 362417**

Brand new, never worn, **motor bike helmet**, with visor and inside sun visor, red, grey & white. Size medium. Paid £90, will accept **£30** or nearest offer.

07980 284002

Leather black briefcase 17½" x 12½" x 4". **£10 o.n.o.** In good condition.

01579 362846

Please let us know when your item has sold.

01579 363096 or

parishpump@btconnect.com



EVERY THURSDAY 4-5.30PM
ST IVE VILLAGE HALL

NO EXPERIENCE NEEDED, ALL WELCOME
FROM POP TO CORNISH SONGS. WE ONLY SING IT IF IT'S FUN!

PLEASE CONTACT CLARE: 01579 382341

OR EMAIL: CONTACT@CLARENORRISH.COM

45

WEBSITE: clarenorrish.com

What's on in St Ive Parish ?

| WHAT'S ON | WHEN | CONTACT DETAILS |
|------------------------------|--|---|
| MILLENNIUM HOUSE | | |
| Aikido | Thursday 7:00pm | |
| Antique & Collectors Fair | 4th Sunday Monthly 10:00 - 4:00 | |
| Badminton Club | Mon & Tues 7:30pm. Fr. 8.00pm | 01579 363594 (Carol & Nigel) |
| Book Exchange | Daily | 01579 363096 |
| Breath of Air | Monday 12.30pm - 2.30pm | 01579 345989 Pauline |
| Country Dancing | Alternate Thursdays 8.00 - 10.00pm | 01579 382402 Ray Buckingham |
| Drawing Class | Wednesdays 09.30am - 12.30pm | 07886 343621 (Yvette Wiltshire) |
| Ladies Netball | Friday 09.15 - 10:15am | 07985 387472 |
| Penmill Art Group | Friday 10am - 2pm | 01579 363441 |
| Pensioners Lunches | Tuesday 12:00 - 2:00pm | 01579 363096 |
| Short Mat Bowls | Thursday 7:00pm | 01579 208528 |
| Village History Group | Last Monday Monthly 7:30pm | 01579 208754 (Angus) |
| Watercolour Art Class | Wednesdays 1.30pm - 4.30pm | 07886 343621 (Yvette Wiltshire) |
| Wildlife Group | Quarterly | 01579 362539 (Hilary) |
| Woman's Institute | 2nd Wed Monthly 7:15pm | 01579 363718 (Frances Tucker) |
| Yoga | Wednesday 7:00pm | 01579 344464 |
| Zumba Fitness Classes | Wednesday 7:00 - 8:00pm | 01579 363096 (Millennium House) |
| PENSILVA VILLAGE HALL | | |
| Brownies | Monday 4:00 - 6:00pm | 01579 362239 Martha Oliver |
| Pensilva Wednesday Club | Wednesday 2:30pm | 01579 363221 Mrs Jean Conner |
| Pensilva Snooker Club | Wed 7:00pm + Various times | 01579 362091 Phillip Bond |
| Guides | Thursday 6:00 - 8:00pm | 01579 363228 Caroline Hambly |
| MIMS | Friday 1.00 - 3.00pm | 01579 343702 (Chris) |
| Rainbows | Friday 4:00 - 5:00pm | 01579 362091 Lynne Bond |
| Rangers | For Info | 01579 362982 Kirsty Oliver |
| PENSILVA PRE-SCHOOL | | |
| Pensilva Pre-School | Monday-Fridays 9:00 - 3:15 (session times available) | 07890 023924 Mrs Suzanne Kinsman (Manager) |
| Tiny Tots Toddler group | Friday 9:15 - 11:15am | 07890 023924 Mrs Suzanne Kinsman (Manager) |

ST IVE INSTITUTE

| | | |
|-----------------------|---------------------------|-----------------------|
| Gardening Club | 1st Monday monthly 7:30pm | 01579 382762 |
| St Ive Snooker Club | Monday & Thursday 7:00pm | 01579 382315 R Bunkum |
| Art & Craft Group | Tuesday 1:00 - 5:00pm | 01579 362216 (Jackie) |
| Post Office | Wednesday 10:30 - 11:30 | |
| Coffee Morning | Wednesday 10:30 - 12:00 | |
| St. Ive Singing Group | Thursday 4.00 - 5:30pm | 01579 382341 (Clare) |

St Ive Institute available for hire, £3.50 per hour. This includes the use of the kitchen & electric (excluding wall heaters, which are on a £1 coin meter)

Contact Sue Sedgewick on 01579 383291

Hall meetings will now be held quarterly on the second Tuesday of the month in January, April (includes AGM), July and October.



ST IVE & DISTRICT GARDENING ASSOCIATION



Meetings in St Ive Village Hall 1st Monday in the month at 7.30pm

Sat 12th Jan **Annual Lunch** - Bookings now being taken

Mon 4th Feb **Crossing the Tamar, Les Deering.**

Mon 9th Apr **Visit to Duskhunter Cottage,** Roborough, Plymouth, PL6 7BU.
Assemble in St Ive car park to leave at 6.15 pm. Plants for sale.

Visitors and new members are always welcome to join us.



ART AND CRAFT GROUP

We are a small friendly informal group who enjoy doing art and craft. If you paint or do any type of craftwork and would like to join us we'd love to welcome you.

There is no 'teaching' but help/advice is always forthcoming!

We meet at St. Ive Institute Hall from 1.00pm to 5.00pm Tuesday afternoons.

Only £3.00 for the afternoon plus 50p for tea/coffee and biccies.

If you are interested please give Jackie a call on **01579 362216.**

We look forward to meeting you.

Pensilva Post Office

Located through the Café on the 1st floor of Millennium House



Opening times:

| | | |
|-----------|---|----------------|
| Tuesday | - | 9am to 1pm |
| Wednesday | - | 9am to 12 noon |
| Friday | - | 9am to 12 noon |

THE MEL BAR ***MILLENNIUM HOUSE*** ***Licensed Free House***

GUEST ALES - LAGERS - CIDERS - WINES - SPIRITS

Opening Hours

| | | |
|-----------|---|------------------|
| Mon - Thu | - | 5 pm to 11 pm |
| Fridays | - | 3 pm to 11 pm |
| Saturday | - | 12 noon to 11 pm |
| Sunday | - | 12 noon to 11 pm |

01579 363096

