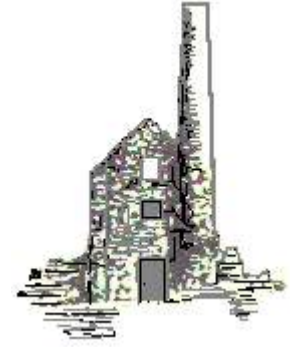


THE PARISH PUMP



November 2018
Edition 444



The Newsletter for the Parish of St Ives



At the "Light Party", St John's Church, Pensilva,
on October 31st.

Disclaimer

The articles appearing in this magazine do not necessarily reflect the views of the Parish Council nor of the Parish Pump Editor.

Parish Councillors Telephone List

Peter Haines (chair)	01579 362459	Alan Moss (vice-chair)	01579 362064
James Bruce	07411 192645	Marlene Carr	01579 362919
Martin Corney	01579 382450	Angie Haines	01579 362459
Rosemary Farley	01579 384810	Tony Hodson	07973 536964
Nigel Libby	07968 891814	Kath Parkes	01579 362005
Ivor Vaughan	07979 934604	Craig Vaughnley	01579 364083
Sharon Daw (Cornwall Councillor) 07837 379305 slash.dash.daw@gmail.com			

Meetings of St Ive Parish Council

2nd Monday monthly: Parish Council Meeting, alternating between St Ive Village Hall and Millennium House (please refer to notice boards for the agenda showing start time and venue each month). Any changes to the regular dates (i.e. Bank Holidays etc.) will be publicised accordingly.

4th Tuesday Monthly: Parish Council Planning Committee Meeting, 7 pm at Millennium House Pensilva, followed by the Parish Council Finance & Administration Committee Meeting commencing at 7.30 in the same venue.

Date of Next Parish Council Meeting

***** PLEASE NOTE: NO PARISH MEETINGS IN DECEMBER *****



Devon & Cornwall Police
Building safer communities together



101

Minicom 18001 101

Police Community Neighbourhood Office

Your Community Support Officer is PCSO Bex STEED 30169.

email: CIOSNBMLiskeard@devonandcornwall.pnn.police.uk

To report a crime call 101 or go to www.devon-cornwall.police.uk

In an emergency call 999

Contact details for St. Ive Parish Council and for Millennium House

Address for correspondence: Millennium House, Century Square, Pensilva PL14 5NF

General Parish matters should be raised initially with the Parish Clerk, Jenny Hoskin, who will present them to the Parish Council.

Telephone: 01579 363096, email: stiveparish@btconnect.com

For accounts matters for the Parish and for Millennium House contact John Body, Finance Officer: 01579 362102, email: millenniumhouseadmin@btconnect.com

Millennium House enquiries and reservations: 01579 363096

email: millenniumhouse@btconnect.com.

On the web: Millennium House Website: www.cornwallvenue.com

Parish website: st-ive-parishcouncil.gov.uk Facebook: facebook.com/stiveparishcouncil

Parish Pump Information and Contact Details

To contact the editor please email: parishpump@btconnect.com

or phone the Parish office: **01579 363096**.

Hardcopy submissions by post or by hand to the Parish office, Millennium House.

Softcopy submissions: By email to the editor in MS Word, MS Publisher, pdf, Tiff or jpeg. Please use A4 pages and minimum 16 point font as the Pump is initially produced in A4 size and reduced to an A5 booklet at the printing stage. If in doubt please contact the editor.

Current Advertising Prices including VAT at 20%

Per issue: Quarter Page £7.50 Half Page £15.00 Full Page £25.00

10% discount for 12 months paid in advance.

Bargain Corner free ads by email to the editor or drop off at the Parish Office.

Deadline for the Parish Pump is STRICTLY 15th of every month

THE MEL BAR

Relax and wind down
at the Mel Bar, Millennium House



From the Editor

I imagine most of us are pacifists at some level. There are degrees of pacifism, of course, but even those who find it relatively easy to justify going to war would surely prefer if war could somehow be avoided, at least when they themselves, or their families, are likely to be in the line of fire. But, no matter where you find yourself on that pacifism scale, you must surely have found yourselves thinking seriously about these issues while watching or listening to the extensive reporting, or participating in the many events, around the WW1 armistice centenary. And even while we mourn the loss of all those people, and perhaps try to imagine what it must have been like to get caught up in that “war to end all wars,” we are only too aware that it failed to end all wars; the media keep us informed about equally horrendous conflicts taking place, around the globe, right now.

Speaking for myself, as a member of a generation that has lived through considerably more than half of the years since the WW1 armistice, I find it deeply dispiriting to have to admit that we have failed to make any real progress towards World peace in the course of our shift on this Earth.

I make a point of keeping the Parish Pump “local” because I know that you readers have plenty of other sources from which to gain information about national and international affairs, so the above is an unusual digression for these editorials. I will justify it by pointing you towards three pages of “remembrance” reports, from four different sources (pages 14 - 16), that collectively show that our parish was not left behind when it came to commemorating those who have died, and continue to die, in man-made conflicts.

More and more Parish Pump content is now submitted in colour but printed in B&W: the online version, in colour, can be seen on the Parish Council website, here: <http://st-ive-parishcouncil.gov.uk/parish-pump/>

Have a very happy Christmas - Joe

Millennium House Opening Hours

Reception

9am till 2.30pm Monday to Friday

Community Coffee Shop

See separate notice on next page

Bar

5pm till 11pm Monday to Thursday

3pm till 11pm Friday

12am till 11pm Saturday and Sunday

If no-one is available please leave a message in our **letter box** at the front of the building or on our answer phone by calling **01579 363096**.

COMMUNITY COFFEE SHOP MILLENNIUM HOUSE, PENSILVA

Now open Monday to Friday!

Monday	10.a.m. to 1.p.m.
Tuesday	9.a.m. to 1.p.m.
Wednesday	9.a.m. to 1.p.m.
Thursday	9.a.m. to 1.p.m.
Friday	9.a.m. to 1.p.m.

*Incorporating a Coffee Morning from 10.a.m. to 12 noon. To include free raffle ticket per week - raffle drawn end of each month.

Open to small groups (pre booked) for Cream Teas - Buffet - Lunch Bites



Collection point open every day, 10am to 4pm in St John's Church, Pensilva.



**BOOK YOUR CHRISTMAS PARTY AT
MILLENNIUM HOUSE ON A FRIDAY OR
SATURDAY IN JANUARY OR FEBRUARY
FOR AS LITTLE AS £10**



**Supporting Guiding & Scouting Activities in Pensilva
200 CLUB Draw Results for October**

**1st No. 138
Mrs K Price**

**2nd No 144
Ms T Haimes**

**3rd No 136
Mr P Gibson**

Thank you for your support

CHAIRMAN'S COLUMN

Well here we are in December already and the festive season is upon us. To get us in the mood, there will be carols around the Christmas tree outside Millennium House at 7.15pm on the 11th of December. (Thanks to Pauline and Mick Miller for donating the tree). Please come along and enjoy yourselves, the singing will be led by Con-Brio, a local choir, and there will be free mince pies and hot drinks available to all singers. The bar will also be open. See adverts elsewhere in the Pump for other events around the Parish on the run up to Christmas.

You may have noticed that we now have two defibrillators in the Parish, one outside the door to the Village Hall at St Ive and the other outside the front door of Millennium House. It was nice to see several people turn up to the free training session in their use, and to see how easy and foolproof they are to use. If we can get sufficient interest we may set up another training session in the New Year. It was nice to see a good turnout for the Remembrance services, both at St Ive and Pensilva and it was also noticeable the number of young people that attended.

All around the Parish I get complaints of cars being parked in dangerous places, like junctions etc. This prevents drivers from having a good view of the road ahead, so they are unable to pull out from junctions safely.

Please think "safety" when you park. Also, with the dark mornings and evenings, don't forget to check that your vehicle lights are all working correctly. A quick note for your diaries, there will be **NO Parish Council meeting in December.**

That only leaves me to wish you all, on behalf of myself and the Parish Council, a Merry Christmas and a Happy New Year.

Pete Haimes.

The date for next year's Pensilva Carnival has been set for 6th July, 2019. Please get in touch with the Events Group to volunteer (phone Karen on 362196 or email James on jamesbruce@makeuseof.com). We cannot go ahead next year without more help!

The next Events Group meeting will be on Wednesday, January 9th, 2019, 7:30pm at Millennium House.



Parish Defibrillators

The Parish Council has installed two Defibrillators in the two wards. One at Millennium House, the other at St Ive Village Hall.

The evening training course carried out by South Western Ambulance Service on the 29th October was attended by approximately 12 people from the two wards, which was a little disappointing considering the size of the Parish.

The use of the Defibrillators is not just for the Paramedics but for the general public to use in case of emergency. It's important to give aid to a casualty quickly whilst waiting for the Ambulance to arrive and the training certainly helps to understand how and when to use them. Hopefully they will never have to be used, but they could save the life of a neighbour or family member.

There is an opportunity for a further training course later in the year. Please register your interest by contacting the Parish Clerk on 01579 363096.

Children's Christmas Party on Saturday 22nd December, 2018

Please invite to the Parish Children's Christmas party:

Name of Child

Who is a (boy/girl)is (age) (Must be 12 or under)

And lives at:

.....

.....

.....

Phone Number.....

Please pass this request to the Parish Clerk at Millennium House by Friday 14th December.

Children must be accompanied by a parent at all times.

Senior Parishioners Christmas Lunch

There is still time to nominate a Senior Parishioner/s to be invited to a Christmas Meal on Sunday 23rd December.

Nominations must be onto the Parish Office by Friday 14th December.

Christmas Carols

A Christmas tree has been donated to the Parish which will be placed in front of Millennium House. We would like to encourage the children of the Parish to make a decoration to be placed on the tree on **Tuesday 11th December at 7 pm.**

Hot Chocolate and mince pies will be served. Christmas Carols with the Con Brio Singers

Many thanks to all who came to the hugely popular MH Kids Halloween Party this year. Here are the winners of the costume contest, congrats everyone!



MILLENNIUM HOUSE

COMMUNITY CENTRE, AND DYNAMIC EVENT
VENUE IN THE HEART OF EAST CORNWALL



Conferencing

We have four meeting rooms for all your corporate needs.



Function Room

For parties, discos, or just larger events; with adjoining kitchen and bar.

Our Facilities

Sports Hall

For sports or larger events requiring a stage, the sports hall is our biggest venue.



Coffee Shop

Providing tea, coffee and cake. And for something stronger, there's the Mel, a licensed bar.



Enquire today:
01579 363096

What Do We Do?

From wedding to wakes, kids or adults, corporate or community, we can host and cater your event. If you have an idea that's not covered here, get in touch and see if we're the right venue for you.

We're also home to:

- ✓ The Mel bar
- ✓ All Being Well Fitness Centre
- ✓ Post Office
- ✓ Sunflower Park kids playground
- ✓ Extensive playing fields
- ✓ Community Library

www.millenniumhouse.org.uk
PRINCESS ROAD, PENSILVA, PL14 5NF

Mel Bar

New Alcohol License

To comply with the Cornwall Council Alcohol Licensing Regulations the Parish Council has to post its intention to update the terms and conditions of the Mel Bar Alcohol License. The new Terms and Conditions have been compiled with the help of the Police Licensing Officer.

If you would like to view the new Terms and Conditions please contact the Parish Clerk.

Christmas Opening Times

Christmas Eve	-	5 pm to 12 midnight
Christmas Day	-	Closed
Boxing Day	-	12 midday to 11 pm
New Years Eve	-	2 or 3 pm to 2 am
New years Day	-	12 midday to 11 pm

Winter Opening Times as of 1st January 2019:

Mon- Fri	-	5 pm to 10 pm
Sat - Sun	-	12 noon to 10 pm

The bar will be open longer for functions.

If you have any experience in organising a Darts Team or a Euchre Team please contact the bar staff. Full support will be given.

St Ive & District Gardening Association

At our November meeting we enjoyed an interesting and thoroughly entertaining evening when Max Simpson brought along his collection of old tools. We were challenged to guess the use of each one but weren't very successful.

At our next meeting, on December 3rd, Tricia Howard will be talking about Fantastic Ferns. Visitors are welcome to join us in St Ive village hall at 7.30pm.

We will also be taking bookings for our annual lunch to be held on 12th January 2019.

PENSILVA WI NOVEMBER MEETING



If you or a member of your family are not keen on Christmas pudding, or you would simply like to try something a bit different, then the subject of Pensilva WI's guest speaker at the November meeting was just for you when Sharon Clemens from Duloe WI demonstrated three wonderfully decadent desserts; Amaretti & White Chocolate Pudding, Choux Ring (with lots of chocolate and cream) and a simple Apply Strudel. Everyone's mouths were soon watering and members couldn't wait to try each one. There was very little left of the puddings at the end of the evening. President Frances Tucker warmly thanked Sharon for giving us all some brilliant ideas for the Festive season.

Dates for your diary:

Thursday 6th December – Christmas County Lunch, Falcon Hotel, Bude

Friday 7th December – County Christmas Carol Service, St.Petroc;s Church, Bodmin. 3.00pm

Saturday 8th December – Christmas lunch at Trethorne. 12.30pm

Monday 10th December – Christmas visit to Cowslip. 10.00-12.30pm

Wednesday 12th December – Pensilva WI Christmas party

Birthdays this month: Lorna Truscott who received a lovely spray of flowers.

Competitions: Flower of the month – 1st Jean Hoare, 2nd Frances Tucker, 3rd Jill Pascoe. Home-made Christmas decoration – 1st Jean Hoare, 2nd Frances Tucker, 3rd Alison Willis.

The members of Pensilva WI wish everybody a very Merry Christmas and a Happy Year and look forward to enjoying a packed programme in 2019.

Millennium House Library

Thank you to all those that are using the Library, and doing the puzzle. It has now settled into a useful facility. I have had a couple of requests for audio books on CD for those people with sight problems. If you have any, please bring them to the Library as I know they will be greatly appreciated. Thank you. Jill Goodey.¹¹

Received from Rev. Becca Ball, St John's Church.



Thank you to everyone who dipped by the church at Halloween! We loved meeting folk, offering hot chocolate (with marshmallows and cream of course!!) and goodie bags and crafts. It was a really lovely evening and we loved seeing so many folk coming through the church.

Halloween and Remembrance have passed so that turns us toward the next big event that some folk may be trying to ignore: The John Lewis ad has been released and Kevin the Carrot is gaining popularity... But if you are struggling at all with any part of Christmas, perhaps if you have lost a loved one either recently or long ago, or you are struggling with money, or life feels uncertain, we would like to offer you a space to come to St John's Church for a "Blue Carol" service. It is not long but is a quiet, reflective service. We also have a chance to light candles if we want to. The most important thing is that we can be honest before God about how we feel in our own private way. Or there will be people to talk to if that would help. As Christmas approaches, we have all our usual festive services, but we wanted to particularly make people aware of this one as we know so many folk struggle in so many different ways. Please know that your church prays for you.

A couple more Halloween "Light Party" pictures.



**JACKET POTATO AND DESERT LUNCH
FROM 12 NOON
ON SATURDAY DECEMBER 15TH
AT ST. JOHN'S CHURCH, PENSILVA**

THE Growing Project

PENSILVA

We would like to start this month with a huge thankyou to our parish council for their contribution from the 'Solar farm fund' towards the project's utilities. We value their support and are looking forward to the project's future.

I am writing this on a very chilly evening with the end of November approaching rapidly!

It is looking like our Celeriac, carrots, shallots, garlic and purple sprouting broccoli are all on track and will be in time to be packed into our Christmas boxes, however our sprouts are a little behind and are more likely to be harvested in January.

At the moment we are picking the last of our salad leaves and Kale but they will soon be replaced with our cabbages, chard and winter broad beans. Also in the last few days we have peas and garlic just poking their heads above the compost in the polytunnels.

Our volunteer work days continue on Wednesdays, 10am-2pm ish, with hot soup and bread provided at lunchtime. New faces always welcome. We have a range of tasks to suit all abilities.

Our organic fruit and vegetable boxes continue to be delivered on a Wednesday. Our extra special Christmas boxes are to be delivered on Friday 21st December, to be fresh for the following week. For details please get in touch with us.

Our purple roadside stalls are currently full to the brim with mainly our own produce

although we are also stocking a small variety from Riverford and also local organic growers.

Our contact details are: Email growingprojectpensilva@gmail.com

Phone: Veg Boxes 07398 828783 ;

Growing Project Admin (Becky) 07854 353865

Volunteering at the
THE Growing Project
PENSILVA



“There but Not There” primary school visit at Merryhue Farm.

On Nov. 1st, Merryhue Farm hosted 75 primary school children from Landrake, St Dominic and St Mellion, who came together for a very special event.

“There but Not There” was a day event to commemorate and celebrate the end of World War 1, and to remember not only the soldiers who served but also the people left at home and the impact of the war on our local rural communities. Merryhue staff and volunteers were helped throughout the day by enthusiastic and cheerful cadets from Duchy College and Devon Army Cadet Force, who helped to answer questions from some very excited children.

The day was full of activity from beginning to end. The replica trench was great fun. Ossie Glover, a former Royal Marine, took the children through the trench, complete with life-like models of rats, and explained what everyday life was like for soldiers on the front line. The children climbed the sniper’s ladders and looked down the barrel of a (decommissioned) WW1 rifle over no-man’s land.

From there, it was on to a calmer but no less enthralling question and answer session with Harry Staff, a local military historian. We learned how a cavalryman would have to chop off his dead horse’s hoof and take it to his commander to get a new horse! Harry also showed us some snakes made of tiny beads by POWs in Turkey in WW1, some of which had messages embedded into the beads.

After a packed lunch down by the field kitchen we turned our hand to crafts – making poppies from tissue paper and colouring. We also planted acorns and sweet chestnuts, each with a named cross remembering one of the local fallen. These will eventually be planted up at Merryhue as a memorial avenue.

The children then took the minibus up to the top of the site to meet the giant Poitou donkeys which were used for breeding mules for use in the war, and to meet the 2-day old lamb born to our Swiss Valais Black Nosed sheep – no war connection there, just very cute.

At the end of the day we all gathered at the field kitchen to try some of the food the soldiers would have eaten at the frontline, cooked by Steve, a Royal Navy veteran. Goat and pea soup was a firm favourite, as was the corn bread with corned beef stew.

Then it was time for a more sombre moment. Children, teachers, staff, volunteers and cadets gathered together to remember all those who died in the war. Cheryl read “For the Fallen” a poem by Lawrence Binyon, then one of the cadets bugled the last post, followed by 2 minutes silence. After the reveille was sounded Merryhue staff read 15 names from a list of local soldiers who died, to represent the loss to the community.

The day₄ was a huge success, with several teachers saying it was “the best school trip they’d been on”.



“There but Not There” at Merryhue Farm.

Pictured left: Getting a feel for what life in the trenches was like for the World War 1 troops - and for the rats!

“There but Not There” at Merryhue Farm.

Pictured right: Looking down the barrel of a World War 1 rifle.

Note the “there but not there” soldier behind the machine gun.



Remembrance Day

The nation and our Pensilva community made a special effort in remembering the fallen in the service of our country this 2018 Remembrance Sunday. The hundred years since the first world war made the commemoration even more poignant than usual.

The uniformed groups as always paraded with great dignity making their parents and our community so proud. It was also heart-warming to have some who serve this country now in uniform. And despite the warning of heavy showers we were blessed with blue skies and sunshine. The wreaths laid covered many of the groups and organisations in the village including the school and pre-school.

As time rolls on, in order to maintain our act of Remembrance into the future, we will need others to be part of the organisation process. If you would like to be a part of that future please let me know. We would welcome your input.

Geoff Cox, 01579 362698.

From St Ive Parish Council. Armistice Day 11th November 2018

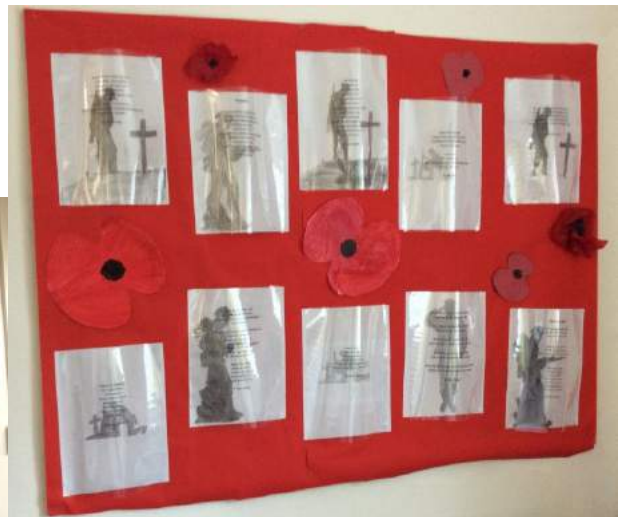


A good number of people turned out to pay their respects on Armistice Day, 100 years since the end of WW1. It was good to see the children taking part laying wreaths, teaching the next generation to be thankful for the sacrifice is important.

Pensilva Primary School Commemorates WW1 Centenary



Every child in the school made a poppy for our outdoor display of 100 poppies to mark 100 years. Alongside the poppies are the names of those we remember from the parish from both WW1 and WW2. Pictured with the display are Macy and Henry from our School Council. We had a whole school assembly to mark the event alongside a two minute silence.



Children from years 5 and 6 wrote poetry about the war and created a display of soldiers covered in poppies.



LET'S MEET (chat and eat!)



@Gorfenna



St. Ive, PL14 3LX

LUNCH CLUB.

A chance to meet up and socialise. All welcome.



Starting Monday

3rd December



Then 1st Monday every month

11.30 - 2pm

£2.50 pay on the day.

01579 384810

Call for information or just come along.

A friendly welcome, a warm lunch and conversation await!

www.gorfennacommunity.co.uk



Ruth and Colleen's Monthly

BINGO

At Millennium House

on Tuesday December 4th

Eyes down at 7:30pm

Over 18's only

£££ CASH PRIZES £££

FRIENDS OF PENSILVA HEALTH CENTRE

CHRISTMAS TEA

AT MILLENNIUM HOUSE ON
FRIDAY 7TH DECEMBER 2018

AT 2.30.pm.

Bring and Buy

(New or nearly new - No videos or books please)

Cards

Raffle

£3 entry to include food and drink

EVERYONE WELCOME

QUIZZES AT MILLENNIUM HOUSE

NEXT QUIZ: SATURDAY DEC. 8TH, 7:30PM

Organised by and raising funds for

All Being Well

Improving the health of our community

PENSILVA MEMORY CAFE

SPECIAL NOTICE! SPECIAL NOTICE! SPECIAL NOTICE!

THE DECEMBER MEMORY CAFE IN PENSILVA WILL TAKE PLACE ON THURS.13TH DECEMBER INSTEAD OF THE USUAL FOURTH THURSDAY. IT WILL BE A "CHRISTMASSY" AFTERNOON WITH ENTERTAINMENT FROM PENSILVA SCHOOL CHOIR.

DO YOU HAVE MEMORY PROBLEMS OR CARE FOR SOMEONE WHO DOES? WHETHER IT'S MILD, MODERATE OR SEVERE YOU CAN SOMETIMES FEEL A BIT ISOLATED AND ALONE.

DON'T BE LONELY. KEEP SMILING. THERE ARE MANY OTHERS LIVING WITH THIS CONDITION.

COME AND JOIN US ONCE A MONTH FOR SOME FUN AND LAUGHTER, MUSIC & REMINISCENCES.

WE MEET ON THE FOURTH THURSDAY OF EACH MONTH AT ST JOHN'S CHURCH FROM 2PM – 4PM.. WE ALSO SUPPLY TEA/COFFEE AND CAKES.

DONATIONS OF £1 PER PERSON APPRECIATED

19

MORE INFO FROM PAT 01579 363461 OR CAROLYN 01579 362698

POLPERRO FISHERMAN'S CHOIR

IN AID OF THE TRIANGLE CENTRE, CORNWALL AIR
AMBULANCE, AND MILLENNIUM HOUSE EVENTS



Live Music

MILLENNIUM HOUSE

PENSILVA, PL14 5NF

DECEMBER 15th 2018

7:30pm £5 ON THE DOOR

ST. IVE CHURCH



JOHNNY COWLING: CHRISTMAS SPECIAL

TICKETS
£10



INCLUDES A PASTY SUPPER

SUNDAY 16TH DECEMBER AT 7PM

TICKETS AVAILABLE FROM PAT: 362959 BRIAN: 364010 DENNIS: 383054

MILLENNIUM HOUSE EVENTS GROUP
PRESENTS

CRIMBO
BINGO

GREAT CHANCES TO WIN!

EYES DOWN 8PM
WEDNESDAY, DECEMBER 19TH 2018
@ MILLENNIUM HOUSE

CAROLS IN THE CAR PARK!



**7PM SATURDAY
22ND DECEMBER
ST IVE CARPARK
(BY PLAYGROUND)**

**COME AND SING WITH ST IVE SINGING GROUP
ROUND THE CHRISTMAS TREE THEN ON TO ST
IVE VILLAGE HALL FOR MINCE PIES AND HOT
DRINKS! IF YOU WOULD LIKE TO BRING A
BOTTLE, PLEASE DO.**

BRING A TORCH! WORDS PROVIDED.

IF RAINING AT 7PM, MEET AT VILLAGE HALL .

COLLECTION FOR ACTION FOR CHILDREN

FURTHER INFO: CLARE 01579 382341



**SEW, KNIT AND NATTER.
WHY NOT JOIN US ON
THE LAST TUESDAY OF EACH MONTH
for sewing, knitting or just for a chat and a
cup of tea or coffee and cake.**

We meet at ST JOHN'S CHURCH, PENSILVA from 2pm to 4pm.

Christingle
50
YEARS

Christingle

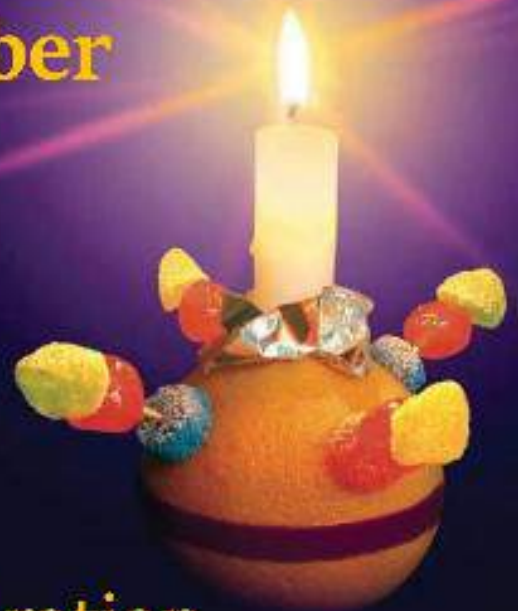
Monday 24th December

6.00 pm

St John's Church

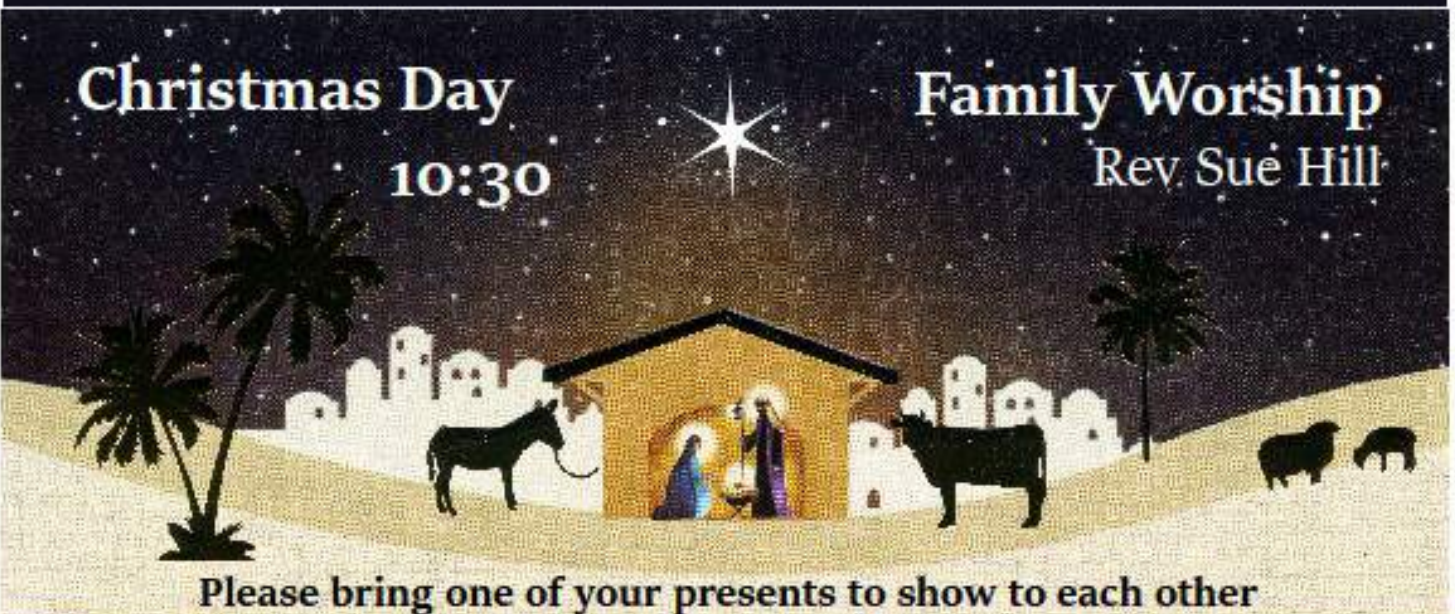
Pensilva

Come and join the celebration



Christmas Day
10:30

Family Worship
Rev. Sue Hill



Please bring one of your presents to show to each other



MILLENNIUM HOUSE

PENSILVA, PL14 5NF



NEW YEAR'S EVE PARTY

★ MEXICAN THEME ★

MONDAY
31ST DEC

FROM
7:30^{PM}

★ INCLUDES BUFFET AND DISCO ★

£10 PER PERSON /
£5 CHILD (2-16)

TO BOOK CALL
KAREN
01579 362 196



★ NEW OWNERS AT VICTORIA INN ★

New lunch and Evening menu

Brunch Fridays & Saturdays from 9.30am – 11.30am

New Opening Hours

Monday	Closed all day		
Tuesday		5pm to 11pm
Wednesday	12pm to 3pm and	5pm to 11pm
Thursday	12pm to 3pm and	5pm to 11pm
Friday	9.30am	to	11pm
Saturday	9.30am	to	11pm
Sunday	12pm to	7pm

★ **Tuesdays** **Curry night and full menu** ★

★ **Thursday nights** **2 for £12** ★

★ **Quiz - 2nd Tuesday every month (Dec 11th) Teams of 6** ★

New Year's Eve:

'A night at the movies' fancy dress theme, with red carpet, photo shoot.

ElevenEves "free" pasties and snacks served at 11pm.

£5 a square Charity Raffle, £50 first prize, drawn on the night, squares can be bought throughout December.

Other charity activities throughout the evening.

Book now for Christmas parties & Christmas Day Lunch!!!!

★ **LIVE MUSIC EVERY MONTH** ★

CALL – 01579 363933

Art Classes *with Yvette*

Millennium Centre, Pensilva.

*If you have always wanted to Sketch or Paint 'Why Wait'??
Come and Join one of my classes, they are fully structured,
suitable for both beginners and improvers.*

Kick start your hobby in a 'friendly and relaxed' atmosphere, aimed at 'enjoyment'.

Drawing Class - Wednesday Mornings 9.30am to 12.30pm

Watercolour Art Class - Wednesday Afternoon 1.30 to 4.30pm

Other Classes & One day workshops or demonstrations also available.

Contact Yvette on 07886 343621 or

email: yvettewiltshire@sky.com website: www.artwithyvette.com

St Ive Church Produce Market

Every 1st Friday 10:30 to 1:30pm

Homemade Cakes Fresh Vegetables

Jams Pickles Local made Pasties

Bric-a-brac and much more - also

Home Reared Traditional Meat

Pork, Beef, Chicken, Dry Cured Bacon, Sausages from

Trehill Farm Produce

Cooked Lunch available from 11:30 only £4.50

PENSILVA WEDNESDAY CLUB R.V.S

**Meet in Pensilva Village Hall at 2.30.p.m. on alternate
Wednesdays**

**All Adults welcome to join - £1 per meeting –
Refreshments - Various activities - Entertainment -
Coach Trips - Raffle**

Info: please contact Jean Connor 01579 363221

Pensioners Lunch

**2 Course Meal plus Tea or Coffee
Only £5.50**

**Every Tuesday here at Millennium House
Speak to our reception or
telephone Millennium House on 01579 363096**



**So why not join us for Good
Food and Good Company, all on
the day you collect your
pension?**

MOBILE LIBRARY

The County Mobile Library visits our area once a month on Fridays of "Week 3" (NOTE: not necessarily the 3rd Friday of the month).



Next visits: 21st Dec.

**Stops at: The Victoria Inn, Pensilva at
10.25 to 10.45am;
Quethiock bus stop. 11.00 to 11.20am.**

Badminton?

Come and join our relaxed and friendly group at Pensilva Millennium House

Mon & Tue 7.30 - 9.30pm

Friday 8.00 - 10.00pm

For further info phone

Nigel or Carol on

01579 363594 or

07885 798370

All Being Well

Your local, friendly gym.

Over 18 years working in our local community to improve health, fitness and well being.

Call **01579 363890**, drop in at Millennium House, Pensilva, or email abwgym@gmail.com

Opening hours:

Mon/Fri 10am-3pm & 5pm-9pm

Wed 10am to 3pm

Tues/Thur 9am to 1pm

Saturday 10am to 1pm

Ask about GP exercise referrals!

PENMILL ART GROUP

We are a small, friendly group using all art mediums. If you paint we would love you to join us.

We meet at

Millennium House

10-2 every Friday.

Please come & see us or phone Pam on

01579 363441.

LISKERRET MALE VOICE CHOIR

We are currently looking for new members in all sections. No previous experience necessary.

Practice Mondays 7:30pm at the Royal British Legion, Liskeard.

Enquiries to the secretary on

01579 363881

Email: charaton@btinternet.com

Website: www.liskerretmvc.org

Charity No. 1120243

PENSILVA VILLAGE HALL

Anyone wishing to book the hall for meetings, birthday parties or fundraisers please contact Peter or Jackie Browning on **01579 363212** or email **peter@pensilva.freeserve.co.uk**.



Please note that as well as hall rent there is a coin meter for heating at 40p/hr.

We hold a Hall users and committee meeting on the fourth Monday of each month at 7.00pm. Please feel free to come along and support us.

Organisations that meet in Pensilva Village Hall

Meeting Times	Organisation	Contact Person	Telephone
Mon. 4:00 - 6:00	Brownies	Mrs Martha Oliver	01579 362239
Alternate Wed. 2:30 - 4:00	Wednesday Club	Mrs Jean Conner	01579 363221
Wed. 7:00 & various	Snooker Club	Mr Philip Bond	01579 362091
Thu. 6:00 - 8:00	Guides	Miss Caroline Hambly	01579 363228
Fri. 1:00 - 3:00	MIMS	Chris	01579 343702
Fri. 4:00 - 5:00	Rainbows	Mrs Lynne Bond	01579 362091

St Ive Institute & Village Hall

Every Wednesday	10:30am to 12 noon 10:30am to 11:30am	Coffee morning Travelling Post Office
First Monday	7:30pm	St Ive Gardening Club
Every Monday & Thursday	7:00pm	St Ive Snooker Club

PENSILVA GROUP MEETINGS NOW AT 10:00am, 5:30pm and 7:30pm.

be inspired
with
**Slimming
World**



MONDAY PENSILVA 10am, 5:30 & 7:30 pm
The Millennium Centre, Princess Road,
Pensilva, Liskeard PL14 5NF.
Tel: Hayley **07966 370233**

TUESDAY LISKEARD
9:30am, 11:30am, 5:30pm or 7:30pm
Lower Hall, Church St., Liskeard
PL14 3AQ. Tel: Vicki **07973 402829**

WEDNESDAY LISKEARD 9:30am
Liskeard & District Sports Association,
Lux Park Coldstyle Road Liskeard
PL14 3HZ. Tel: Sammy **07807 289801**

THURSDAY DOBWALLS 5:30 or 7:30pm
Dobwalls Football Club Dobwalls Liskeard
PL14 4LU. Tel: Sammy **07807 289801**

FRIDAY GOLBERDON 9:30am
Golberdon Village Hall Nr Callington
PL17 7ND. Tel: Jane **07769 734316**



slimmingworld.co.uk



BRIGHT SKY HOME SUPPORT (Pensilva area)

would like to offer a trusting, helpful service in a cheerful, friendly way
for
occasional sessions / short-term regular support / extended support
with

Personal Care
Practical Support in the Home

Carers / Family Support
Help with De-Cluttering

For further information please contact Angela on: Mobile 07484 853760
Fully Qualified Health & Social Care Professional , DBS CHECKED - FULLY INSURED
Email angela.hooper2@btinternet.com

DO YOU NEED A HELPING HAND?

Reliable, friendly,
experienced, mature
local resident offering
the following services:

Cleaning Ironing

Shopping Light Gardening Dog Walking

CRB/DBS checked and fully insured. Competitive rates.

Contact Jess: Telephone or text: 07934 764 327.

Email: homeangel77@yahoo.com. Find us on Facebook





Westcountry HOME CARE

We can help you to get the most out of your life by delivering personalised care from daily visits to 24 hr care.

By working together we will find the right care services for your Individual needs

Speak to us to claim your free visit*

Our Team Is Your Team

www.westcountrycare.co.uk

 @WCHCLTD

01579 342256
01566 775960



CareQuality
Commission

Good

*T&C Apply

PENSILVA HEALTH CENTRE - PATIENT PARTICIPATION GROUP

We are a group of patients who meet regularly with the Health Centre to bring forward for discussion ideas, comments and suggestions about your surgery. In the past we have held open days, helped at the flu clinics and participated in a trial People's Commissioning Board Project.

We also organise a Carer's and bereavement group (see below) and a 'Walking for Health' group

(Contact Marlene Carr 362919).

You can contact us directly or through the Health Centre.

PENSILVA HEALTH CENTRE CARERS AND BEREAVEMENT GROUP

Are you a carer, bereaved or lonely? Then come along and join our Group. Tea, Coffee and plenty of friendly chat and, when possible, local trips to various venues.

**Meetings are held every third Thursday of each month at 11.30.a.m.
Meet in Millennium House car park.**

For any information please contact Jean Connor 01579 363221



Struggling with Sight Loss?

iSight Cornwall offers practical help to people living with sight loss in Cornwall including:

Low Vision: Advice for low vision aids

Assistive Technology: Advice on products

Benefits Advice: Assistance to claim entitlements

Equipment Demonstration: Advice on gadgets

Social Clubs & Activities: Links to clubs & activities in the county

For more details Telephone 01872 261110 or visit

www.isightcornwall.org.uk

**NHS
REGISTERED**



**SUPPORTED BY
LOCAL DOCTORS**

Do you suffer with various long term health conditions?

Come along and join our small, friendly group.
For company, light exercise and support.

Upstairs in Millennium House every Monday from 12.30pm - 2.30pm

For more information contact us:

Pauline **01579 345989**

Jeanette **01579 363691**

The **co-operative**
Community Fund



St Ive Methodist Chapel

Services for December 2018

Sun 2nd Dec	11am	Mr Alan Libby
Sun 9th Dec	11am	Rev Iris Bray with Communion
Sun 16th Nov	11am	Mr Keith Mutton
	3 pm	Cornish Language Carol Service with refreshments.
Sun 23rd Nov	11am	Carol Service
Christmas Day	9.30pm	Rev Iris Bray
Sun 30th Dec	11am	Mrs Marguerite Smith

Please follow us on our Chapel Facebook page.

The Chattermakers craft group will meet in the Guildroom at 7:30pm on Thursday 13th December, with nibbles.

Dates for your diaries: Fri. 4th and Sat. 5th January, we will be holding an Epiphany Nativity Scene Exhibition each day 10am-12pm and 2-4pm. On the Saturday from 10-12 we will also be holding a Coffee Morning in aid of St Petroc's Society, which works with the homeless in Cornwall. All welcome.

St Ive Church

Services at 11:15am

- Dec 2nd** No service at St Ive. Together at Ten at Merrymeet 10am
Dec 9th Morning Service 11:15am. Christmas Lunch follows this service
Dec 16th Holy Communion. 11.15am
Dec 23rd Family Service. 11.15am Small pets welcome
Dec 24th Christmas Eve Holy Communion 9:30pm
Dec 30th Together at Ten at Menheniot 10am

Other Events

- Fri 7th** **Produce Market and Bric-a-brac**
Home made cakes etc, fresh vegetables, locally made pasties, pickles, jams and much more. **Farm fresh meat from Trehill Farm Produce.**
- Thu 6 to 13** **Christmas Tree Festival. 10am to 4pm. Refreshments available.**
- Sun 9th** **Christmas Lunch in Church. 12:45. Booking essential.**
- Sun 16th** **Johnny Cowling Special. 7pm.**

Tickets £10 incl. a pasty supper. Tickets from Pat 362959, Brian 364010 or Dennis 383054

Church Wardens Brian Dwelly 01579 364010 btdwelly@aol.com

Colin Catchpole 01579 383867 ccatchpole@hotmail.com

Donations for Liskeard Food Bank can be left in the Church each day between 10am & 4pm

Trerosa Studios

Pottery & Woodturning activities for you to enjoy

Well equipped

All materials provided

Help / tuition from qualified teacher if required

01579 647247 or 07486 089466

36

Email: **bob@trerosacrafts.co.uk** www.trerosacrafts.co.uk

High quality professional tools

Small friendly atmosphere

ST JOHN'S CHURCH, PENSILVA

Services for December 2018

Anglicans and Methodists share services at 11 am each Sunday, coffee served before service

Sunday 2nd	11am	Mr Derek Packman
Sunday 9th	11 am	Café Church
Sunday 16th	11am	<u>Carol Service</u>
Sunday 23rd	11 am	Rev. Sue Hill, Holy Communion
<u>Monday 24th</u>	<u>6pm</u>	<u>Christingle Service</u>
Tuesday 25th	10.30am	Christmas Day Service with Rev. Sue Hill
Sunday 30th	11 am	Rev. Mark Pengelly

Café Style Church followed by coffee and chat, Thursday mornings 10am.
Everyone very welcome.

No Afternoon Tea in December

Jacket Potato and Desert Lunch from 12 noon on Saturday 15th.

Blue Christmas Service for those who feel sad due to loss of a loved one, loneliness or unemployment and would find comfort in knowing you are not alone. Wednesday 19th December 2pm at St John's.

Advent Course, 7:30pm at St John's Church, Friday evenings for 4 weeks from 30th November. All very welcome to come along for the evening. Ring Carolyn on 362698 for details.

Prayer Group: 2pm Fri. 14th December. Please ring Eileen 362580 or Carolyn 362698 if you would like prayer for yourself or someone else.

For further details of the Services held in St John's, if you know of any illness or need in the village or if you would like your wedding or baptism in the church, please ring: Geoff Cox, 362698 or Frances Tucker, 363718

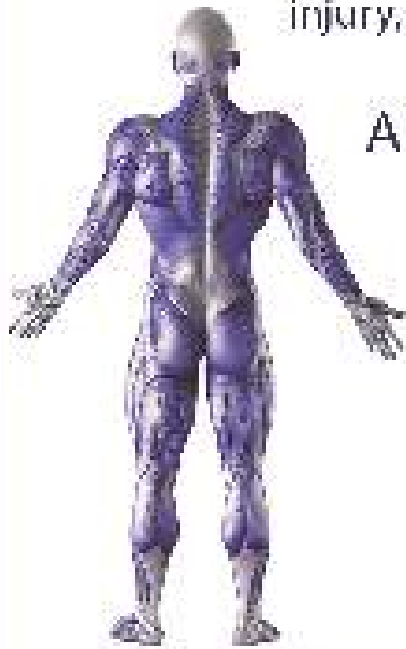
Alford Joinery - For all your joinery needs Specialists in bespoke doors, windows, staircases, conservatories, etc.

- 20 years experience
 - Large or small jobs
 - All joinery hand-crafted
 - Top quality FSC certified timbers
 - All joinery can be fitted if required.
- 01208 873444 or 07757 666460
info@alfordjoinery.com
www.alfordjoinery.com

QUALIFIED RAYNOR MASSAGE THERAPIST

RELAXING AND THERAPEUTIC DEEP TISSUE MASSAGE TREATMENTS

Effective for many different types of chronic pain, sports injury, stress and tension related problems



APPOINTMENTS AVAILABLE AT

THE WELLBEING CENTRE
LISKEARD 01579 344090

THE NATURAL WAY
LISKEARD 01579 345300

Contact : Tina North
Phone : 07720 832322

tina-north@massage-therapy-cornwall.co.uk



R J Gardening & Handyman Services

All aspects of gardening and handyman work undertaken.

- ~Local and Trustworthy
- ~Hard Working
- ~Reliable and Experienced
- ~No job too small
- ~Competitive rates

Contact Raymond on:

07541 229064 or 01579 347622

raymond_pearcegb@yahoo.com

Find us on Facebook.





R&C



Groundworks and Landscapes

Fencing	Patios
Paths & Steps	
Turf & Astro turf	
Driveways	Rendering
Retaining walls	Decking
Digger work	
Footings & foundations	

And more

Free no obligation quotes

Call Rob on:

**07518246666 or
01579 641802**

Window Cleaner Window Cleaner

Also any upvc cleaned

i.e. fascias, gutters, etc.

gutters cleared & unblocked

Please phone Rob

07709 053464

Window Cleaner Window Cleaner

Save Costly Energy!



SOLARTEC

Windows &
Conservatories Ltd

**'A' Rated WINDOWS & DOORS
at BEST PRICES EVER!**



Professionally fitted and finished by us with a

FENSA REGISTERED 10 year ins. guarantee.
In all colours



NEW

**FACTORY SHOP
SUPPLY ONLY**

For all your windows, doors, conservatories,
fascia, trims, guttering and sealants

**7-10 DAY TURN AROUND ON WINDOWS,
DOORS and CONSERVATORIES**

TEL: 01579 343425

FAX: 01579 344500

WEBSITE: www.solartecwindows.co.uk

EMAIL: sales@solartecwindows.co.uk

KEEPING JOBS IN CORNWALL



PJR Garden Services

Phil Rule

All aspects of garden
work - grass / hedge
cutting, patios, fencing
etc.

Mobile 07387 449004

Tom Marshall

TM Plastering

Plasterer and Property Care

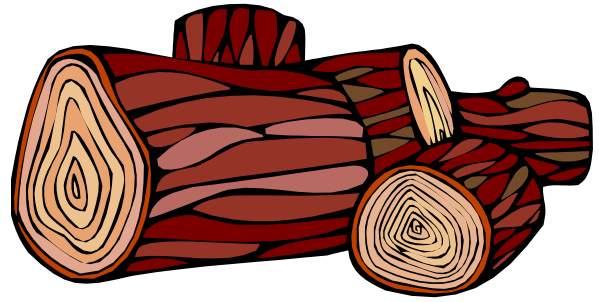
07544819284

Tommarshallcornwall@gmail.com

Free estimates

- Internal plastering
- Internal / external rendering
- Damp proofing
- Stud Walls
- Patio laying
- Chimney repairs
- Pointing
- Painting

SEASONED LOGS



MIXED LOAD

or

HARDWOOD

Tel. Jonathan

Mobile 07966 070725

or

01579 363157

DAVID HEWETT GARDEN SERVICES

For all aspects of garden care:

lawn mowing, grass cutting,

strimming, hedge cutting,

clearance, and more.

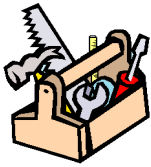
01579 363796

25 years experience.

Fully insured.

KEEP IT TIDY

General Property Maintenance
including Decorating, plus Electrical



HONEST PRICE
for
QUALITY WORK.



No Job Too Small

Kit Rickard

18 Higher Glen Park
Pensilva

Phone: 01579 363378

Mobile: 07855 699071

Email: KITKeepItTidy@hotmail.com

Chiropodist

Fully qualified, experienced and
insured Chiropodist/Podiatrist

- Nail cutting, corns/callus,
diabetic foot care etc
- Personal home visits, groups
and residential homes

Contact Clare:
07757973709



DOG GROOMING

40 YEARS EXPERIENCE



SMALL and MEDIUM Dogs
Groomed to Your Request

LISKEARD AREA
Inquiries Welcome

Call Patricia: 07517 658862
TO YOU OR TO ME



Domestic Electrical
Property Maintenance
Interior & Exterior Work
Carpentry :: Decking
Kitchens :: Bathrooms
Wall & Floor Tiling
General Plumbing

MCCARTHY PROPERTY MAINTENANCE

Electrical Safety
Register incorporating
ELECSA  ECA
Certification Ltd

HIGHLY REGARDED LOCAL BUILDER
COMPETITIVELY PRICED
COVERING THE SOUTH WEST

Contact Dominic

07968 599 675

01579 362 945

info@mccarthypropertymaintenance.co.uk

www.mccarthypropertymaintenance.co.uk

Alphaplas Limited t/a
Trims&Windows

www.trimsandwindows.co.uk

Double Glazed uPVC
Windows-Doors-Conservatories
'Conservation' vertical sliders a speciality



Supply only to Trade & DIY or
Full installation registered with

FENSA inc
10yr insurance backed guarantee



Email: alphaplas@btconnect.com

01752 840078

Installation team based in
Pensilva, Looe & Torpoint

Owna

Mobile Device and PC repair

07766013897

alex@owna.co.uk



For repair of mashed mobiles, trashed tablets, or poorly PC's visit www.owna.co.uk or call Alex for a free quote, no fix no fee

MARK FITCH CHIMNEY SWEEP

- * BRUSH & VACUUM
- * CLEAN, RELIABLE SERVICE
- * COVERING ALL S.E. CORNWALL
- * DISCOUNT FOR MULTIPLE CHIMNEYS
- * COWLS & GUARDS FITTED
- * STOVES SERVICED



*Call
Mark on:*

01579 350762
07773 462643





Affordable Counselling

Caring, confidential,
non-judgemental

- Increased confidence and self esteem
- Help to cope better at difficult times
- Improved relationships
- Clarify confused thoughts & feelings
- Assertiveness
- Personal insight
- Improved emotional health
- Available for youth and adults

Isabelle McGarahan BA, PGCE
Dip in Therapeutic Counselling,
Accredited ACC, DBS cleared
www.im-counselling.org email:
isabelle@im-counselling.org
01579 344090/07857326229

ADVERTISE HERE!

This box for **just £7.50 per month** including VAT.
10% discount for a 12 month order. i.e. **£5.63 + VAT** per month for 12 mths

See the full tariff on page 3

One thousand copies per month distributed free of charge to households in the Parish of St Ive.

PENROSS

Rosecraddoc Lodge Holiday Bungalows
(Between Pensilva & Liskeard)



Ideal for visiting family and friends !
Refurbished in 2018. Sleeps 4. Electric, heating, bedding and towels inc in rent. Patio. Free wi-fi. Follow us on Facebook.

Sorry no pets and no smoking.
Contact Julie Tucker 01579 362221 or
penhargetfarm@gmail.com
for 15% discount

NICOLA GREENE

BSc (hons) Podiatry MChs

HPC Registered Chiropodist/Podiatrist

Home Visit Practice treating all your foot care needs:

- Nail Cutting
- Corns and Calluses
- Thickened Nails
- Dry Cracked Skin
- Verrucae
- Foot Pain
- Diabetic Foot Assessments
- Wound Care

T: 01579 590027

T: 01752 291565

M: 07786164205

E: nicki_greene@yahoo.com

Group Travel

Enterprise Park, Midway Road, Bodmin
Cornwall PL31 2FQ. Tel: 01208 77989



BODMIN M.O.T. CENTRE at Group Travel

Class 4, 5 and 7. Trade enquiries available upon request. Tel: 01208 77989

2018 COACH EXCURSIONS

8th DEC - BATH CHRISTMAS MARKET
16th DEC - MOUSEHOLE & ANGARRACK LIGHTS

2019 SPRING TOUR
26th APR – 1st MAY - ISLE OF MAN

PLUS MANY MORE EXCITING EXCURSIONS IN 2019 INCLUDING
THE POPULAR EXETER CANAL CRUISE

16 TO 70 SEAT COACHES AVAILABLE FOR PRIVATE HIRE. CORPORATE/ VIP, EVENTS & CONFERENCES, WEDDINGS (CAN INCLUDE STAG & HEN PARTY PACKAGE), HOLIDAY TRANSFERS, FUNERALS, DAYS OUT, GROUP TOURS, GOLFING HOLIDAYS & SPORTING EVENTS.

FOR BOOKINGS AND A BROCHURE PLEASE CALL

01208 77989 / 01208 72669

Website: grouptourcoachhire.com Email: grouptourcornwall@btconnect.com

Martin Hoare – Local, Reliable, Competitive



WHEEL DIGGER FOR HIRE
ALSO AVAILABE 'BREAKER'
AND NEW CONCRETE
'CRUSHER BUCKET'

ALL AT COMPETITIVE RATES

GROUND WORKS
DRAINAGE
NEW DRIVEWAYS
SEPTIC TANKS &
'SOAK AWAYS' INSTALLED



LASER LEVEL FOR HIRE
QUOTES AVAILABLE



Phone 01579 363517

or

Mob 07863 291213



INDEPENDENT
FAMILY
FUNERAL
DIRECTORS



Undertaking your individual
needs with efficiency,
compassion and care...

Perfect Choice Prepayment
Funeral Plans from £3249.00

(Prices correct as at 01.01.2013)

01579 362358



Avalennek, Caradon Town,
Upton Cross, Liskeard
Cornwall PL14 5AR
Telephone 01579 363598
Mobile 07901 538132
chrisrounsevell@tiscali.co.uk

HOG ROAST EQUIPMENT HIRE AND MEAT SUPPLY

Hog Roasts For Those Special Occasions
Self Catering or Hassle Free Service
Everything done to your special requirements

CHRIS ROUNSEVELL
TRADITIONAL BUTCHER



Local Accountant offering fixed fee accounting services

With over 20 years experience, I am a fully qualified, friendly, local accountant

- ✓ Annual Accounts for Sole Traders and Partnerships
- ✓ Book Keeping & Payroll
- ✓ Personal Tax Planning
- ✓ Company Accounts
- ✓ Business Support & Advice

- ✓ Self Assessment tax returns
- ✓ iXBRL tax filing
- ✓ Tax investigation Fees Insurance
- ✓ Company Secretarial work
- ✓ Tax calculations for Sole Traders and Partnerships

Kate Vaughnley FCCA - Chartered Certified Accountant

Website : www.kvaccountingsolutions.co.uk or Email : katevaughnley@gmail.com
Telephone : 01579 364083



GRAB LORRY HIRE

PLANT HIRE & GROUNDWORKS

07970 270218 | 01579 344402

**MORE COST-EFFECTIVE THAN SKIPS
FOR SOIL, RUBBLE & GREEN WASTE
REMOVAL!**

CAN REACH OVER WALLS &
FENCES FOR COLLECTION
FROM INACCESSIBLE AREAS

SKIP BAGS AVAILABLE FOR
SMALL JOBS



Come and visit our recently updated
Tile & Bathroom showroom in PENSILVA

We offer a generous discount to all Pump Readers

Unit 24 Pensilva Ind Est, St Ive Road, Cornwall PL14 5RE 01579 362264



CORNWALL TILE
CENTRE

Pensilva Showroom

Open Mon - Fri 8.30am - 5pm
Saturday 9.00am - 1pm

Tiles & Mosaics for:

Bathrooms & Kitchens Living Areas Conservatories
Patios & External Areas Wet Rooms & Spas Swimming Pools
& All Commercial Applications

 **atlas concorde**

www.cornwalltile.com

OPEN FOR RETAIL, TRADE & COMMERCIAL ENQUIRIES



The
**RACEHORSE
INN**



Gastro Pub

Head Chef Phillip Bradshaw

Ray and Flori welcome you to
the Racehorse INN

A fine food experience in a convivial
atmosphere

Our superb Sunday lunch is one to be tried

Open Every Day for Lunch and Dinner

info@racehorseinn.co.uk
www.racehorseinn.co.uk

Take-out: Pizzas & Fish'n'Chips now available



North Hill Village, Cornwall, PL15 7PG

01566 786 916

J. H. Simmons

Painting & Decorating



No Job Too Small

For more information
Please call John
01579 362688

7 East Park, Pensilva

D.J.A. BUILDING SERVICES

ALL ASPECTS OF PROPERTY
MAINTENANCE BUILDING &
REFURBISHMENT

- * Bespoke Furniture and Kitchens
- * Wardrobes and Bookcases
- * Garden Sheds, Poultry Houses & Small Animal Shelters
- * Over 30 years' experience
- * Fully insured
- * References available
- * Free estimates
- * No VAT

**Call David on 01579
364050 / 07767662635**

Westwood Garden Maintenance



Antony Watts

Grass Cutting, Clearance

Weeding, Turfing

Hedge Cutting

Patio Cleaning, Planting

Regular Visits / One-off Contracts

Residential & Commercial

FREE ESTIMATES

01579 362019 www.westwoodgm.co.uk 07952 094472

WH BOND

BOND
TIMBER

BOND
AGRI

BOND
HIRE & SALES

BOND
FARMS



BOND TIMBER
BAKE SAWMILL
TRERULEFOOT
SALTASH
PL12 5BW

BOND HIRE & SALES
MOORDOWN
ST IVE
LISKEARD
PL14 3NA

BOND AGRI
UNIT 4
LITTLE TRETHEW
HORNINGTOPS
PL13 3PZ

01503 240 308
WWW.BONDTIMBER.CO.UK

01579 383 185
WWW.WHBOND.CO.UK

01503 240 171
WWW.BONDAGRI.CO.UK

Pensilva Stores

Amazing Value

Premier
a great deal more from your local store
Mon-Sat. 7:00 AM. – 9:30 PM.
Sunday 8:00 AM. – 9:30 PM.

- ✓ Fantastic Special Offers every month!!! (See store leaflets)
- ✓ Come and Check out our great deals on Wine, Beer and Spirits
- ✓ Local Produce: Homemade Butter and Clotted Cream, Meat from our local butcher
- ✓ Cornish Fresh Fruit and Vegetables
- ✓ Fresh Bread, Pasties and Cakes
- ✓ Take Away Coffee, tea and hot chocolate
- ✓ Newspapers and Magazines, Greeting Cards
- ✓ Paypoint, Lottery

*** Free to use ATM ***
*** Card Payment ***

Friendly Staff + Service with a Smile !!!

Pensilva Stores is a family run business who have been serving local people and visitors for more than 21 years.

Higher Road, Pensilva, Liskeard, Cornwall PL14 5NQ

Tel: 01579 362547

MENDOLOGY Garage Door Specialist

- Repairs
- Servicing
- Installations

Out of hours service
call Dave anytime 07974 442645


MENDOLOGY COMMERCIAL DOORS LTD

www.mendologydoors.co.uk

01579 363760

PensilvaCars

01579 363516

- ✓ MOTs Class 4
- ✓ Service
- ✓ Repair
- ✓ Tyres
- ✓ FREE Courtesy Car
- ✓ Car & Van Sales
- ✓ Diagnostics
- ✓ Air Conditioning
- ✓ 

We have offered a supply, fit & balance of tyre service for 10 years at competitive prices.

Most of our tyres can be supplied the same day.

LOCAL RECOVERY £45.00

www.pensilvacars.co.uk

pensilvacars@hotmail.co.uk

We can service and repair your car to manufacturer specification, keeping your dealer warranty without main dealer expense.





KEITH RICHARDS

Motor Body Repair Specialists

A family run business with fully equipped & maintained workshops & a focus on
Customer Care

- ◇ Motor Body Repair Specialist
- ◇ Mechanical Repairs
- ◇ Servicing to All Makes & Models
- ◇ Computer 4 Wheel Alignment
- ◇ 24 Hour Recovery Service
- ◇ Renovations & Re-sprays
- ◇ Member of RMI (Retail Motor Industry Federation)
- ◇ Latest Diagnostics (including specialists for VW, Audi, Seat, Skoda & Vauxhall)

With over 30 years' experience we aim to provide you with:- Value for Money -
Friendly Service - Professional Approach - Expert Advice that you Can Trust
(Visit our website for more details)

Pensilva Industrial Estate, St Ive Road, Pensilva, Liskeard, Cornwall PL14 5RE

Tel: 01579 362593

Email: keith@keithrichardsmotorbody.co.uk

Fax: 01579 363194

Website: www.keithrichardsmotorbody.co.uk

Wm. Newham & Sons Est. 1835

Proprietor Robbie Savill AWCB

CHIMNEY SWEEPS & BLACKSMITHS



CHIMNEY SWEEPING

BIRD GUARDS, COWLS & POTS FITTED

CCTV INSPECTIONS & SURVEYS

STACK REPAIRS & REBUILDS

RIGID STEEL SYSTEMS ERECTED

STAINLESS STEEL and PUMPED CONCRETE
CHIMNEY LINING

STOVES SUPPLIED, INSTALLED & REPAIRED

FIREPLACE ALTERATIONS & RENOVATIONS

FULL RANGE OF FIREPLACE FURNITURE
made to order

01579 347777

need somewhere to stay ?
between homes ?
family/friends visiting ?

Cutkive Wood

Holiday Lodges

ideal for Pensilva
& St.Ive

please call Jackie on
01579 362216

J.J.CHILD

PLUMBING AND HEATING ENGINEER

OIL AND GAS APPLIANCE SERVICE , REPAIR AND BREAKDOWNS

LANDLORD'S CERTIFICATES

OVER 25 YEARS EXPERIENCE
CALL JOHN ON 01579 362336
MOBILE 07837921086



502322

Bargain Corner Free Ads up to £50

Ads are free for items up to £50. £5 charge for items over £50. Please ring the Parish Office on **01579 363096** or leave a note at Millennium House reception or email **parishpump@btconnect.com**.

*****Please let us know when your item has sold*****

Pine Bunk Beds H 4'6", L 6'. FREE.
01579 363679

2-Drawer Filing Cabinets (2) H 710mm, W 475mm D 620mm. Could deliver in local area £25 each
07796 091259

Electric Hostess Serving trolley with four warming dishes. £45.
01579 320401

Wooden High Chair, good condition. £5.
Heated Towel Rail, chrome, 800mm high, 400mm wide. £10.
01579 362012

4 Cobblers Shoe Irons, including a rare ladies shoe iron all in VGC. For use or ornamental displays. **£30.**
HP Deskjet Printer in VGC with 5 new HP 21 Black Ink Cartridges and 2 HP Extra large Colour Ink Cartridges **£45 ono.**
2 large size lightweight camouflage military jackets. £10 each, £15 for both.
Hardwood School Play Ground Waste Basket Plant Display Holder 26" high by 16" diameter. Hardwood slats on a galvanised steel wood frame and legs, which can be bolted to the ground. VG solid condition. **£10.**
015679 384658

1 x HAMA Omega Premium photo/video tripod - £23
1 x VELBON CX Mini photo/video tripod - £15
1 x Heiwa Sumo Junior TH250 photo/video tripod - £10
All items in very good used condition.
Pensilva 01579 362207

2 light wood curtain poles with rings. 142cm/56" L; 28mm/1.1" diam. £3 each, £5 pair.

Unused pine shelf kit. 200mmW; 600mmL. Still packaged. £2

Metal dome lampshade. Black with white interior. 30cm diam. £35 new - £5
01579 208836 (Pensilva)

Apollo FS24 child's mountain bike and helmet. Suit 8 - 10 year old. £25
01579 362581

Free standing wooden screen w/ opaque glass panels on top. 5'6" x 5'6". £30.
01579 362204

Concrete Coal Bunker £20
Heavy Duty Plastic Composter £15
01579 363892

Morphy Richards Breadmaker as new £10
Challenge Leaf Blower £10
Hand Mower £5
Giant Phone £3
3 Cocktail Glasses with Shaker and recipes £15
07969 310603

AURA 3 Tent, colour Green; only used for 8 nights camping. Bought for £179.99 but offering it now for **£100** as I have had to give up camping.
Also the **matching Porch Extension - BRAND NEW**, never unpacked since buying for £99.99, but now for sale at **£50**. Real bargains. If you're interested in both, please make me a reasonable offer as I can no longer make use of them. **01579 362574 (Pensilva)**
Please note corrected telephone number

Child's garden metal **swing** & accessories. **£15. 01579 362085**

4 frame honey extractor (plastic). Good order. **£45.**

Carpet shampooer £6

Dyson hoover £5

01579 320401.

Wood-framed **mirror** 2'6" x 3'7". **£10.**

01579 363812

Mobility Walker Hardly used. Cost about £80 new from Argos. Will sell for **£40**

18 Demijohns £1 each. 01579 362001

Lec Fridge. Excellent working order. **£50**

Can deliver Pensilva area. **01579 363791**

Sony Home Cinema System CD/DVD/Tuner/Amplifier with 5 small wired speakers, sub-woofer and remote control. **£50.**

07841 717913.

Three wheel disability walker with bag and brakes. **£30.**

01579 362417

Superdry clothing **2 windcheaters**, black with fleece lining. excellent condition **£20 each** ono **2 hoodies**, 1 purple, 1 navy, good condition **£15** each or ono

Black sherpa lined **windcheater**, excellent condition **£30** ono

All sizes XS & S

Jack Wills **wool sweater** size 8 and Johnnie B red Sherpa lined hoodie age 11-12 **£10** each ono

Photos can be emailed. **07724 111132**

Berry's **sideboard.** Circa 1960s. 171cm high x 44.5cm deep x 78cm high. 2 cupboards with one reversible door. 4 drawers, one felt cutlery drawer. **£50** ono.

Unusual iridescent paper **side lamp.**

Approx 31" high on small base. **£5.**

Buyer collects. 01579 345783.

Reikie or Massage Table etc. Very good condition. (Fold away). **£35.**

Pensilva area. **01579 363192**

Brand new, never worn, **motor bike helmet**, with visor and inside sun visor, red, grey & white. Size medium. Paid £90, will accept **£30** or nearest offer.

07980 284002

Folding **3-wheel walker** with brakes and bag. Ideal mobility aid. Hardly used. **£50.**

01579 363081.

Automatic guitar tuner (quick tune) includes electronic pitchpipe.v.g.c as only used a few times/with box. **£5.**

Inflatable punch tower, foot pump included, (160cm h). New still in box. **£5.**

Ladies motorbike jacket Rayven, size 12, black/pink, as new. **£50.**

Men's black leather bike jacket, 52L, & trousers, 40L, TARCA, vgc. **£50** the set.

Baby bouncer for up to 6mths. East coast, light fawn/with white polka dots design material, vgc, **£10.**

07743 416676 (Minions area)

Nest of 3 tables yew wood and glass top. Good condition **£45.**

3ft Mattress in clean condition. Ex quality. **£50.**

3ft Divan to match mattress. VGC. **£40.**

3ft Pine headboard very attractive **£20.**

01579 343990 or **07553 928333**

Leather black briefcase 17½" x 12½" x 4". **£10** o.n.o. In good condition.

01579 362846

Shires Show jacket. Black with purple Collar. Only been worn a couple of times. Ex. Con. **£25.**

01579 343992 or **07810 178802**

Homedics Back Massager. Full lumbar or Lower Lumbar only options. Plus variable intensity. Fits any armchair. Can be seen working. Only used twice. Great Xmas present. **£50** ono.

07973 510693 St Ive.

Please let us know when your item has sold.

01579 363096 or

parishpump@btconnect.com

What's on in St Ive Parish ?

WHAT'S ON	WHEN	CONTACT DETAILS
MILLENNIUM HOUSE		
Aikido	Thursday 7:00pm	
Antique & Collectors Fair	4th Sunday Monthly 10:00 - 4:00	
Badminton Club	Mon & Tues 7:30pm. Fr. 8.00pm	01579 363594 (Carol & Nigel)
Book Exchange	Daily	01579 363096
Breath of Air	Monday 12.30pm - 2.30pm	01579 345989 Pauline
Country Dancing	Alternate Thursdays 8.00 - 10.00pm	01579 382402 Ray Buckingham
Drawing Class	Wednesdays 09.30am - 12.30pm	07886 343621 (Yvette Wiltshire)
Ladies Netball	Friday 09.15 - 10:15am	07985 387472
Penmill Art Group	Friday 10am - 2pm	01579 363441
Pensioners Lunches	Tuesday 12:00 - 2:00pm	01579 363096
Short Mat Bowls	Thursday 7:00pm	01579 208528
Village History Group	Last Monday Monthly 7:30pm	01579 208754 (Angus)
Watercolour Art Class	Wednesdays 1.30pm - 4.30pm	07886 343621 (Yvette Wiltshire)
Wildlife Group	Quarterly	01579 362539 (Hilary)
Woman's Institute	2nd Wed Monthly 7:15pm	01579 363718 (Frances Tucker)
Yoga	Wednesday 7:00pm	01579 344464
Zumba Fitness Classes	Wednesday 7:00 - 8:00pm	01579 363096 (Millennium House)
PENSILVA VILLAGE HALL		
Brownies	Monday 4:00 - 6:00pm	01579 362239 Martha Oliver
Pensilva Wednesday Club	Wednesday 2:30pm	01579 363221 Mrs Jean Conner
Pensilva Snooker Club	Wed 7:00pm + Various times	01579 362091 Phillip Bond
Guides	Thursday 6:00 - 8:00pm	01579 363228 Caroline Hambly
MIMS	Friday 1.00 - 3.00pm	01579 343702 (Chris)
Rainbows	Friday 4:00 - 5:00pm	01579 362091 Lynne Bond
Rangers	For Info	01579 362982 Kirsty Oliver
PENSILVA PRE-SCHOOL		
Pensilva Pre-School	Monday-Fridays 9:00 - 3:15 (session times available)	07890 023924 Mrs Suzanne Kinsman (Manager)
Tiny Tots Toddler group	Friday 9:15 - 11:15am	07890 023924 Mrs Suzanne Kinsman (Manager)

ST IVE INSTITUTE

Gardening Club	1st Monday monthly 7:30pm	01579 382762
St Ive Snooker Club	Monday & Thursday 7:00pm	01579 382315 R Bunkum
Art & Craft Group	Tuesday 1:00 - 5:00pm	01579 362216 (Jackie)
Post Office	Wednesday 10:30 - 11:30	
Coffee Morning	Wednesday 10:30 - 12:00	
St. Ive Singing Group	Thursday 4.00 - 5:30pm	01579 382341 (Clare)

St Ive Institute available for hire, £3.50 per hour. This includes the use of the kitchen & electric (excluding wall heaters, which are on a £1 coin meter)

Contact Sue Sedgewick on 01579 383291

Hall meetings will now be held quarterly on the second Tuesday of the month in January, April (includes AGM), July and October.



ST IVE & DISTRICT GARDENING ASSOCIATION



Meetings in St Ive Village Hall 1st Monday in the month at 7.30pm

Mon 3rd Dec **Fantastic Ferns**, Tricia Howard. Plants for sale

Sat 12th Jan **Annual Lunch** - Bookings now being taken

Mon 4th Feb **Crossing the Tamar**, Les Deering.



Visitors and new members are always welcome to join us.



ART AND CRAFT GROUP

We are a small friendly informal group who enjoy doing art and craft. If you paint or do any type of craftwork and would like to join us we'd love to welcome you.

There is no 'teaching' but help/advice is always forthcoming!

We meet at St. Ive Institute Hall from 1.00pm to 5.00pm Tuesday afternoons.

Only £3.00 for the afternoon plus 50p for tea/coffee and biccies.

If you are interested please give Jackie a call on **01579 362216**.

We look forward to meeting you.

Pensilva Post Office

Located through the Café on the 1st floor of Millennium House



Opening times:

Tuesday	-	9am to 1pm
Wednesday	-	9am to 12 noon
Friday	-	9am to 12 noon

THE MEL BAR ***MILLENNIUM HOUSE*** ***Licensed Free House***

GUEST ALES - LAGERS - CIDERS - WINES - SPIRITS

Opening Hours

Mon - Thu	-	5 pm to 11 pm
Fridays	-	3 pm to 11 pm
Saturday	-	12 noon to 11 pm
Sunday	-	12 noon to 11 pm

01579 363096

