

# THE PARISH PUMP



September 2018  
Edition 442



**The Newsletter for the Parish of St Ives**



© 2018 Peter Dukes

Pensilva School Year Six pupils in their own production of "Thank You for the Music"  
See page 7.

## Disclaimer

The articles appearing in this magazine do not necessarily reflect the views of the Parish Council nor of the Parish Pump Editor.

## Parish Councillors Telephone List

Peter Haines (chair)	01579 362459	Alan Moss (vice-chair)	01579 362064
James Bruce	07411 192645	Marlene Carr	01579 362919
Martin Corney	01579 382450	Angie Haines	01579 362459
Rosemary Farley	01579 384810	Tony Hodson	07973 536964
Nigel Libby	07968 891814	Kath Parkes	01579 362005
Ivor Vaughan	07979 934604	Craig Vaughnley	01579 364083
Sharon Daw (Cornwall Councillor) 07837 379305 slash.dash.daw@gmail.com			

## Meetings of St Ive Parish Council

**2nd Monday monthly:** Parish Council Meeting, alternating between St Ive Village Hall and Millennium House (please refer to notice boards for the agenda showing start time and venue each month). Any changes to the regular dates (i.e. Bank Holidays etc.) will be publicised accordingly.

**4th Tuesday Monthly:** Parish Council Planning Committee Meeting, 7 pm at Millennium House Pensilva, followed by the Parish Council Finance & Administration Committee Meeting commencing at 7.30 in the same venue.

## Date of Next Parish Council Meeting

Monday 10th September 2018 at 7:30pm at Pensilva



Devon & Cornwall Police  
Building safer communities together



101

Minicom 18001 101

## Police Community Neighbourhood Office

Your Community Support Officer is PCSO Bex STEED 30169.

email: CIOSNBMLiskeard@devonandcornwall.pnn.police.uk

To report a crime call 101 or go to [www.devon-cornwall.police.uk](http://www.devon-cornwall.police.uk)

In an emergency call 999

## Contact details for St. Ive Parish Council and for Millennium House

Address for correspondence: Millennium House, Century Square, Pensilva PL14 5NF

General Parish matters should be raised initially with the Parish Clerk, Jenny Hoskin, who will present them to the Parish Council.

Telephone: 01579 363096, email: [stiveparish@btconnect.com](mailto:stiveparish@btconnect.com)

For accounts matters for the Parish and for Millennium House contact John Body, Finance Officer: 01579 363096, email: [millenniumhouseadmin@btconnect.com](mailto:millenniumhouseadmin@btconnect.com)

Millennium House enquiries and reservations: 01579 363096

email: [millenniumhouse@btconnect.com](mailto:millenniumhouse@btconnect.com).

On the web: Millennium House Website: [www.cornwallvenue.com](http://www.cornwallvenue.com)

Parish website: [st-ive-parishcouncil.gov.uk](http://st-ive-parishcouncil.gov.uk) Facebook: [facebook.com/stiveparishcouncil](https://facebook.com/stiveparishcouncil)

## Parish Pump Information and Contact Details

To contact the editor please email: [parishpump@btconnect.com](mailto:parishpump@btconnect.com)

or phone the Parish office: **01579 363096**.

Hardcopy submissions by post or by hand to the Parish office, Millennium House.

Softcopy submissions: By email to the editor in MS Word, MS Publisher, pdf, Tiff or jpeg. Please use A4 pages and minimum 16 point font as the Pump is initially produced in A4 size and reduced to an A5 booklet at the printing stage. If in doubt please contact the editor.

**Current Advertising Prices** including VAT at 20%

Per issue:      Quarter Page £7.50      Half Page £15.00      Full Page £25.00

10% discount for 12 months paid in advance.

Bargain Corner free ads by email to the editor or drop off at the Parish Office.

**Deadline for the Parish Pump is STRICTLY 15th of every month**

## THE MEL BAR

Relax and wind down  
at the Mel Bar, Millennium House



## From the Editor

The Penmill art group have been meeting in the Millennium House Arts and Crafts room for many years. They have contacted me to say that they are changing their day to Fridays with effect from September 7th. If you are free on Fridays and might like to join this group, you will find their details on pg. 23.

If you see me driving around the parish in my pickup truck, don't be too harsh on me: there's a reason why it's in such a disgusting state. The fields around us are full of brambles which, at this time of year, are loaded with blackberries. The birds eat the blackberries. The birds roost in the trees. My pickup is parked under the trees. The next bit I will leave to your imagination, but it explains why my originally white truck is currently a motley purple. It's not pretty, but that's nature! What we need now is some heavy rain, then the truck might revert to it's habitual pale green - the colour of chlorophyll, also resulting from its being parked under trees. If you're thinking that I should wash it, well I did! A couple of years ago. And yes, it is due for another wash soon - in about another couple of years :)

Keep well - Joe

## Millennium House Opening Hours

### Reception

9am till 2.30pm Monday to Friday

### Community Coffee Shop

See separate notice on next page

### Bar

5pm till 11pm Monday to Thursday

3pm till 11pm Friday

12am till 11pm Saturday and Sunday

If no-one is available please leave a message in our **letter box** at the front of the building or on our answer phone by calling **01579 363096**.

# *COMMUNITY COFFEE SHOP MILLENNIUM HOUSE, PENNSILVA*

**Now open Monday to Friday!**

<b>Monday</b>	<b>10.a.m. to 1.p.m.</b>
<b>Tuesday</b>	<b>9.a.m. to 1.p.m.</b>
<b>Wednesday</b>	<b>9.a.m. to 1.p.m.</b>
<b>* Thursday</b>	<b>9.a.m. to 1.p.m.*</b>
<b>Friday</b>	<b>9.a.m. to 1.p.m.</b>

**\*Incorporating a Coffee Morning from 10.a.m. to 12 noon. To include free raffle ticket per week - raffle drawn end of each month. Special offer on coffee/tea/cake during this period. \***

**Revised menu, offering more choices.**

**Open to smaller groups of up to 25 (pre booked) for  
Cream teas - buffet- lunch bites.**

## **MILLENNIUM HOUSE LIBRARY**

Dear Residents, since the Parish council invested in bookshelves for the Library (next to the gym) a number of you have shown great interest and use it frequently. This is very pleasing, however, we would like to remind you that the essence of the library is an exchange facility. We now have plenty of books/dvd`s/jigsaws etc to fill the available shelves and would request that large quantities be taken elsewhere. We will inform you, through the Pump, if further stocks are required in the future.

Thank You Jill and Norman Goodey

P.S. Parents/grandparents/friends do bring your children as we have lots of books for them.

Free or very low cost lunches are available for local families every Friday from 12 noon in the Hall at Liskeard Methodist Church (or St Martins Church Hall on the 1st Friday of each month) with activities for pre-school age children beforehand.

## CHAIRMAN'S COLUMN

It is with sadness that I have to tell you of the death of Jo Treseder, after a short illness. She could often be seen along with her friend Anne, planting and tending the flower beds and grounds around Millennium House. She will be greatly missed.

By now you will probably have seen the resurfaced car park at Millennium House, it is sad to note that during the closed period several people found it necessary to move the road closed signs to gain access to the car park. This was a matter of safety concerns to both the council and the contractors. A speed hump and improved signage will soon be installed, along with a few other actions, in conjunction with the Police, to try to stop the antisocial behaviour of some car park users.

Following many complaints of overgrown hedges obstructing pavements and paths, I must remind land owners and house owners of their responsibility to keep their hedges trimmed so as not to obstruct pathways. Now the nesting season is over this problem can be addressed. Failure to comply may result in Cornwall Council carrying out the work and charging you for it.

Don't forget September is the month for horticultural shows, starting with St Ive on Saturday 1st September in the village Hall, and then Pensilva in Millennium House, on Saturday the 8th September. Please support them if you can.

Millennium House is now able to offer A3 and A4 colour and black and white photo copying if required.

As I write this we have had the first weekend with the new car park at Millennium House and sadly we again had to pick up one and a half black bags of rubbish where people just empty their cars onto the car park, why not use the litter bins provided!?

Enjoy the last few days of the school holidays.

Pete Haimes.

## Pensilva Primary does 'Thank You for the Music'

Pensilva Primary School's year 6 pupils put on their own performance of 'Thank You for the Music', based on the well-known production 'Mamma Mia', to end their year and time at the school.

Many staff, parents, governors and wider members of the community were involved in a range of ways, from supplying costumes and props (including a bed from a local resident in the village), to playing music, taking photos or filming and painting scenery. However, the real success was down to the children themselves, who worked incredibly hard to produce an amazing performance in barely six weeks. They learnt many lines and song lyrics and many children sang their first ever solos in front of an audience.

Mrs Halliday (the year 6 teacher) noted how truly proud she was of the amazing effort that all of the children had gone to, to learn lines and sing solos by overcoming their personal fears and building their own confidence. 'It was one of those moments in teaching that reminds you of why you do the job. It really was a real team effort and I'd like to say a huge thank you, once again, to all that were involved, from staff, parents, governors and members of the wider school community for helping to make the production such a success.'



Several parents noted how fantastic it was to see the enjoyment from the children and everyone singing along to some well-known Abba hits. It was hard work, but a great way to end the school year and the children will definitely have some memories to take with them from Pensilva Primary School as they move onto secondary school.

Photos left and on the cover are courtesy of Peter Dukes of Class Photography.

## Gorfenna Community Open Day

All at Gorfenna were overjoyed by the tremendous turnout for their Open Day which took place on a very sunny Saturday in August. The purpose of the day was so people could have a look around but also for anyone who may have some time to volunteer to meet the team.

Gorfenna offers a **safe, supportive and inclusive environment** for people who are **living with dementia** or **feeling lonely** or **isolated** as well as being a **Day Service** for **Vulnerable Adults with Learning Disabilities, Mental Health issues** or **Acquired Brain Injuries**.

They were delighted to be joined by The Mayor and her husband who were very early visitors and stayed and joined in with all the attractions – whether they were looking at the Vintage Tractors or talking with Sarah Worne, the Bird Lady of Fowey who brought Peanut and Whisper with her to say Hello. Jane Ford from MVV UK very kindly gave some information to help with the recycling process and made mice and masks out of old egg boxes for the children.

Many of the children enjoyed interacting with the miniature horses Jim and Dave as well as being able to pet a pair of sheep and see the pigs in their sty. It was lovely that so many joined in with the Accessible Nature Trail and the winner has already received the prize of a pair of nesting boxes. They were also delighted also to be joined by Mandy Turner and Lisa Knight from the Royal Voluntary Service along with Mark Lane from Active Plus who will be running some more activities at Gorfenna in the near future.

Most agreed that their favourite thing was the pasties and cakes supplied throughout the day and many a cream tea was had by those who attended. If you, anyone you know are living with **dementia** or **feeling lonely** or **isolated** or if you have some time and would be interested in volunteering, please contact Gorfenna either via their website

[www.gorfennacommunity.co.uk](http://www.gorfennacommunity.co.uk) or on 01579 384810 and arrange to visit.





# THE Growing Project

PENSILVA

Thankyou to everyone that came and supported us on our open day on the 21st of July. You will have seen the photos in August's Parish pump, but the August article had been written before then !

The sun shone , we welcomed old and new friends, we sold lots of our own fruit and veg and lots of tea was drunk and cake eaten !

August has seen the harvesting of tomatoes, cucumbers including our round "Crystal Lemon", runner beans, French beans and large quantities of courgettes.

We have picked our first aubergines in the last few days with hopefully more to follow in the next days and weeks. Our next harvest will be sweetcorn which have done well in the combination of sun and rain although had to be staked to stop the wind blowing them over. We do have a large amount of sweet peppers in our poly tunnels but now need a few weeks of sun to ripen.



Our crops for autumn and winter are doing well with 3 varieties of Kale, 4 varieties of Purple sprouting broccoli, Chard and Cabbages all growing well but unfortunately we have lost most of our sprout seedlings so have started again and sown more seed.

Thanks to all those in our community for their donations of tools, wood and pots and trays and

an extra big thankyou to the lovely people that donated a garden shed which has enabled us to tidy and sort all our pots and trays and put everything out of the way.

Our compost bins have been re-located to the top of our site, please take any garden waste to the top left hand corner of the site, we do still have a bin for kitchen waste inside our gate.

Our vegetables are available through our box scheme and also from our purple roadside stalls where you can find a variety of vegetables grown on our land with a small amount from Riverford such as lemons and limes.

Our contact details are Email [growingprojectpensilva@gmail.com](mailto:growingprojectpensilva@gmail.com)

Phone: 07398 828783 for veg boxes and 07854 353865 for admin



## The Growing Project needs you !

Volunteers required for our regular work sessions on Wednesday 10am-2pm and Thursday 12-3pm, Also help required for fundraising and information events on weekends .

Volunteer tasks include site maintenance, sowing seeds, watering, weeding, harvesting, weighing produce for vegetable boxes and stalls and manning stalls at local events.

Lunch is provided on our volunteer days from our own organic produce.

For more information please contact on 07854 353865 or 07398 828783

Firewood from  
Pentiddy Community  
Woodland



£120/load+ approx. 1m<sup>3</sup> dry Ash - delivery free within a 5mile radius.



Buying this firewood helps to maintain and promote the sustainable management of this charity run public access woodland, and benefits wildlife, people and the local economy.

[www.pentiddy.co.uk/communitywoodland](http://www.pentiddy.co.uk/communitywoodland)

Call Ele or Anthony: 01579 363775 or 07765 103504

## **Jurassic Coast Challenge.**

We just wanted to say a huge thank-you to everyone who supported, encouraged, sponsored and donated to our challenge. We have to date raised over £5000 for Cornwall MNDA. It was a huge physical and mental challenge over 2 days, but nothing in comparison to what MND sufferers and their families face every day.

Thank you all once again

Sue and Tom Horler and all the Lifton Self Preservation Society.

## **St Ive and District Gardening Association**

Unknown to us, although very close, lies an undiscovered gem of a plant nursery at Troutbeck Farm, Merrymeet.

St Ive Gardening Association members visited this month and were impressed by the range of well kept plants. After an introductory talk, a tour of the facilities led to many “can’t resist” purchases. The subsequent challenge of finding spaces in our home gardens followed, though the extreme dry weather has led to a few casualties i.e. gaps to be filled.

Our season of talks in St Ive Village Hall starts on September 3rd with Caroline Stone talking about her passion, Nerines. Our talks start at 7:30pm and visitors are always welcome.

For further details please ring 01579 382762 or 382512.



**SEW, KNIT AND NATTER.  
WHY NOT JOIN US ON  
THE LAST TUESDAY OF EACH MONTH  
for sewing, knitting or just for a chat and a  
cup of tea or coffee and cake.**

**We meet at ST JOHN’S CHURCH, PENSILVA from 2pm to 4pm.**

**Ruth and Colleen's Monthly**

**BINGO**

**At Millennium House**

**on Tuesday 4th September**

**Then October 9th**

**Eyes down at 7:30pm**

**Over 18's only**

**£££ CASH PRIZES £££**

**QUIZZES AT MILLENNIUM HOUSE**

**NEXT QUIZ: SATURDAY SEPT. 1ST, 7:30PM**

**Then: October 13th, December 8th**

**All at 7:30pm**

**Organised by and raising funds for**

***All Being Well***

**Improving the health of our community**



# PENSILVA WOMEN'S INSTITUTE HORTICULTURAL SHOW

To be held in  
**MILLENNIUM HOUSE, PENSILVA on  
SATURDAY 8<sup>th</sup> SEPTEMBER, 2018.**

To be opened at 2.15pm.

**By Margaret Johnson.**

**Cornwall Federation W.I Chairman.**

Classes for Cookery, photography, cut flowers and flower  
arranging, plants and vegetables, handicrafts and art.

**Schedules available from Jill Pascoe 362819,**

**also from Millennium House.**

**Cream Teas**

**Raffle.**



**Please support your local show.**

**FREE ENTRY**

**PENSILVA W.I**

**COFFEE and CAKE  
MORNING**

**In aid of Macmillan  
Cancer Support**



THE VILLAGE HALL, PENSILVA.  
SATURDAY 22<sup>ND</sup> SEPT. 10.30am to 12pm

Bring and Buy - Raffle

## **PATCHWORK & QUILTING EXHIBITION**

in aid of **Bowel Cancer UK**

28<sup>th</sup>, 29<sup>th</sup> & 30<sup>th</sup> September 10am - 4pm

At **Cartwheels Craft Centre**

**Merrymeet Liskeard PL14 3LW**



Featuring:-

- Exhibits from Cartwheels Sewing Groups
- Access to Cartwheels Patchwork & Quilting Shop
- Raffle in aid of Bowel Cancer UK
- Refreshments
- Ample free off road parking
- Disabled access and facilities



# COMMUNITY APPLE DAY



LINKINHORNE PARISH HALL  
@ UPTON CROSS

On the B3254 PL14 5AX

Sunday 30<sup>th</sup> September 2018

11am to 4pm

APPLE PRESSING DEMONSTRATIONS (bring your apples  
and containers for the juice - 30p per litre charge)

LOCAL PRODUCE/PRESERVES      COUNTRY CRAFTS

APPLE DISPLAY TABLE

APPLE COMPETITIONS      CIDER FOR SALE

RAFFLE

TOFFEE APPLES AND CAKES      LUNCHES

WILDLIFE AND HISTORY GROUP DISPLAYS

Further information contact  
Frank Werkmeister 01579 364053

[fpwerkmeister@btinternet.com](mailto:fpwerkmeister@btinternet.com)



# LISKERRET MVC & LEVOW KESSON

## JOINT WORKSHOP/CONCERT EVENT

Liskerret MVC and Levow Kesson Mixed Voice Choir are partnering up for a day long work shop and evening Concert

**Saturday 20th October 2018**  
**Registration 10.30am**

**Wesley Methodist Church**  
**Barn Street, Liskeard**

Leaflets/application forms are available from Liskeard Information Centre, Public Hall, The Royal British Legion & Wesley Methodist church.

A great place to hear, sing and play music, this will be an exciting event for those people who wish to join with our choirs and have the opportunity to sing music especially chosen and arranged for such an occasion.

Joint choirs and guest singers will be learning and performing two pieces; Amazing Grace by John Newton and Alleluia by Gordon Young.

Your Musical Directors for the day will be; Kerry Hackworth, Liskerret MVC and Heather Taylor, Levow Kesson, mixed voices, both are well qualified and experienced musicians and singers. Kerry Hackworth, singing coach and pianist, teaching at Truro College and Heather Taylor, also Pianist, Music and singing teacher and church organist. Our choirs share the same accompanist, Graham Bray, who is very intuitive and does a fine job for both choirs. The concert at the end of the workshop day will include a number of songs by each choir together with songs practised jointly with you, our special singing guests. Teas and coffees for everyone afterwards; even the audience!

For further enquiries, Contact the Secretary at: [charaton@btinternet.com](mailto:charaton@btinternet.com) or 01579363881



***Liskeard Spinners***  
**Open Day**  
**Saturday 13<sup>th</sup> October**  
**10am – 3pm**

St Martins Church Hall, Liskeard  
(Behind St Martins Church)

***Displays and Demonstrations  
of Spinning & Weaving.***

***Come along and have a go!***

***Refreshments available.***

***Tea, Coffee, Homemade Cakes.***

**For further information please  
call Nikki Little on 01579 345821**

**Supporting Guiding &  
Scouting Activities in  
Pensilva  
200 CLUB**

**Draw Results for July**

**1st No. 191  
Mrs. Mrs B Welch**

**2nd No 55  
Mrs J Rendle**

**3rd No 105  
Ms K Olver**

**Thank you for your  
support**

**BRIGHT SKY HOME SUPPORT (Pensilva area)**

**would like to offer a trusting, helpful service to its customers in a cheerful,  
friendly way**

**for**

**occasional sessions or short-term regular support**

**with**

**Personal Care**

**Practical Support in the Home**

**Carers / Family Support**

**Help with De-Cluttering**

Established by Angela Hooper

Fully Qualified Health & Social Care Professional , DBS CHECKED - FULLY INSURED

For further information please contact Angela on: Mobile 07484853760

Email [angela.hooper2@btinternet.com](mailto:angela.hooper2@btinternet.com)



**EVERY THURSDAY 4-5.30PM**  
**ST IVE VILLAGE HALL**

**FROM SEPTEMBER 6TH**

**NO EXPERIENCE NEEDED, ALL WELCOME**  
**FROM POP TO CORNISH SONGS. WE ONLY SING IT IF IT'S FUN!**

**PLEASE CONTACT CLARE: 01579 382341**

**OR EMAIL: [CONTACT@CLARENORRISH.COM](mailto:CONTACT@CLARENORRISH.COM)**

**WEBSITE: [clarenorrish.com](http://clarenorrish.com)**

## **St Ive Church Produce Market**

**Every 1<sup>st</sup> Friday 10:30 to 1:30pm**

**Homemade Cakes Fresh Vegetables**

**Jams Pickles Local made Pasties**

**Bric-a-brac and much more - also**

### **Home Reared Traditional Meat**

**Pork, Beef, Chicken, Dry Cured Bacon, Sausages from**

### **Trehill Farm Produce**

***Cooked Lunch available from 11:30 only £4.50***

## **PENSILVA WEDNESDAY CLUB R.V.S**

**Meet in Pensilva Village Hall at 2.30.p.m. on alternate  
Wednesdays**

**All Adults welcome to join - £1 per meeting –  
Refreshments - Various activities - Entertainment -  
Coach Trips - Raffle**

**Information: please contact Jane Mann 01579 362960**

## **Pensioners Lunch**

**2 Course Meal plus Tea or Coffee  
Only £5.50**

**Every Tuesday here at Millennium House  
Speak to our reception or  
telephone Millennium House on 01579 363096**



**So why not join us for Good  
Food and Good Company, all on  
the day you collect your  
pension?**

## **MOBILE LIBRARY**

The County Mobile Library visits our area once a month on Fridays of "Week 3" (NOTE: not necessarily the 3rd Friday of the month).



**Next visits: 28<sup>th</sup> Sept, 26<sup>th</sup> Oct, 23<sup>rd</sup> Nov, 21<sup>st</sup>  
Dec.**

**Stops at: The Victoria Inn, Pensilva at  
10.25 to 10.45am;  
Quethiock bus stop. 11.00 to 11.20am.**

# Wheal Tor Hotel 01579 363401

New for Autumn . Log fires, candles ,real ales , dogs and children welcome

Opening hours from 1st October

Monday -Closed

Tuesday - 4-1 1pm

Wednesday 4-1 1pm

Thursday 4-1 1pm

Friday 4-1 1pm

Saturday 12-1 1pm

Sunday 12-10pm

From the 1st October

Wednesdays fish and chip night , two full size fish and chips for only £12

Saturday all you can eat pizza night , unlimited salad bar , unlimited pizzas ,get to try all the flavours , all freshly made to order only £10 per person £5 children

Sundays , serve yourself Sunday roast , a full platter of a whole roast chicken , fresh vegetables , crispy roast potatoes , yorkies, rich gravy loads for two or enough for four only £16 per platter ( bookings only )  
Full food menu also available

## **ADVERTISE HERE!**

This box for **just £15 per month** incl. VAT.

**10% discount** for a 12 month order.

i.e. **£11.25 + VAT** per month for 12 months

See the full tariff on page 3

**One thousand copies per month**

distributed free of charge

to households in the Parish of St Ive.

## **PENSILVA MEMORY CAFE**

DO YOU HAVE MEMORY PROBLEMS OR CARE FOR SOMEONE WHO DOES? WHETHER IT'S MILD, MODERATE OR SEVERE YOU CAN SOMETIMES FEEL A BIT ISOLATED AND ALONE.



DON'T BE LONELY. KEEP SMILING. THERE ARE MANY OTHERS LIVING WITH THIS CONDITION.

COME AND JOIN US ONCE A MONTH FOR SOME FUN AND LAUGHTER, MUSIC & REMINISCENCES.

WE MEET ON THE FOURTH THURSDAY OF EACH MONTH AT ST JOHN'S CHURCH FROM 2PM – 4PM.

WE ALSO SUPPLY TEA/COFFEE AND CAKES.

DONATIONS OF £1 PER PERSON APPRECIATED FOR MORE INFO PHONE PAT 01579 363461 OR CAROLYN 01579 362698

The collection point for the

**foodbank**

is now open every day from  
10am to 4pm

in St John's Church, Pensilva.

# PENSILVA GROUP MEETINGS NOW AT 5:30pm AS WELL AS 7:30pm

be inspired  
with  
Slimming  
World



**MONDAY PENSILVA 5:30 and 7:30 pm**  
The Millennium Centre, Princess Road,  
Pensilva, Liskeard PL14 5NF.  
Tel: Hayley **07966 370233**

**TUESDAY LISKEARD**  
**9:30am, 11:30am, 5:30pm or 7:30pm**  
Lower Hall, Church St., Liskeard  
PL14 3AQ. Tel: Vicki **07973 402829**

**WEDNESDAY LISKEARD 9:30am**  
Liskeard & District Sports Association,  
Lux Park Coldstyle Road Liskeard  
PL14 3HZ. Tel: Sammy **07807 289801**

**THURSDAY DOBWALLS 5:30 or 7:30pm**  
Dobwalls Football Club Dobwalls Liskeard  
PL14 4LU. Tel: Sammy **07807 289801**

**FRIDAY GOLBERDON 9:30am**  
Golberdon Village Hall Nr Callington  
PL17 7ND. Tel: Jane **07769 734316**



[slimmingworld.co.uk](http://slimmingworld.co.uk)



# **Badminton?**

Come and join our relaxed and friendly group at Pensilva Millennium House

**Mon & Tue 7.30 - 9.30pm**

**Friday 8.00 - 10.00pm**

**For further info phone**

**Nigel or Carol on**

**01579 363594 or**

**07885 798370**

## *All Being Well*

Your local, friendly gym.

Over 18 years working in our local community to improve health, fitness and well being.

Call **01579 363890**, drop in at Millennium House, Pensilva, or email [abwgym@gmail.com](mailto:abwgym@gmail.com)

### Opening hours:

Mon/Fri 10am-3pm & 5pm-9pm

Wed 10am to 3pm

Tues/Thur 9am to 1pm

Saturday 10am to 1pm

**Ask about GP exercise referrals!**

## *PENMILL ART GROUP*

We are a small, friendly group using all art mediums. If you paint we would love you to join us.

We meet at

Millennium House

**10-2 every Friday.**

Please come & see us or phone Pam on

**01579 363441.**

## **LISKERRET MALE VOICE CHOIR**

We are currently looking for new members in all sections. No previous experience necessary.

Practice Mondays 7:30pm at the Royal British Legion, Liskeard.

Enquiries to the secretary on

**01579 363881**

Email: [charaton@btinternet.com](mailto:charaton@btinternet.com)

Website: [www.liskerretmvc.org](http://www.liskerretmvc.org)

Charity No. 1120243

## **PENSILVA VILLAGE HALL**

Anyone wishing to book the hall for meetings, birthday parties or fundraisers please contact Peter or Jackie Browning on **01579 363212** or email **[peter@pensilva.freeserve.co.uk](mailto:peter@pensilva.freeserve.co.uk)**.



Please note that as well as hall rent there is a coin meter for heating at 40p/hr.

We hold a Hall users and committee meeting on the fourth Monday of each month at 7.00pm. Please feel free to come along and support us.

### **Organisations that meet in Pensilva Village Hall**

<b>Meeting Times</b>	<b>Organisation</b>	<b>Contact Person</b>	<b>Telephone</b>
Mon. 4:00 - 6:00	Brownies	Mrs Martha Oliver	01579 362239
Alternate Wed. 2:30 - 4:00	Wednesday Club	Mrs Jean Conner	01579 363221
Wed. 7:00 & various	Snooker Club	Mr Philip Bond	01579 362091
Thu. 6:00 - 8:00	Guides	Miss Caroline Hambly	01579 363228
Fri. 1:00 - 3:00	MIMS	Chris	01579 343702
Fri. 4:00 - 5:00	Rainbows	Mrs Lynne Bond	01579 362091

### **St Ive Institute & Village Hall**

Every Wednesday	10:30am to 12 noon 10:30am to 11:30am	Coffee morning Travelling Post Office
First Monday	7:30pm	St Ive Gardening Club
Every Monday & Thursday	7:00pm	St Ive Snooker Club



**NHS  
REGISTERED**



**SUPPORTED BY  
LOCAL DOCTORS**

## **Do you suffer with various long term health conditions?**

Come along and join our small, friendly group.  
For company, light exercise and support.

Upstairs in Millennium House every Monday from 12.30pm - 2.30pm

For more information contact us:

Pauline **01579 345989**

Jeanette **01579 363691** The **co-operative**  
Community Fund



## **DO YOU NEED A HELPING HAND?**

Reliable, friendly,  
experienced, mature  
local resident offering  
the following services:



**Cleaning Ironing**

**Shopping Light Gardening Dog Walking**

CRB/DBS checked and fully insured. Competitive rates.

**Contact Jess:** Telephone or text: 07934 764 327.



Email: [homeangel77@yahoo.com](mailto:homeangel77@yahoo.com). Find us on Facebook

**PENSILVA HEALTH CENTRE - PATIENT PARTICIPATION GROUP**  
We are a group of patients who meet regularly with the Health Centre to bring forward for discussion ideas, comments and suggestions about your surgery. In the past we have held open days, helped at the flu clinics and participated in a trial Peoples Commissioning Board Project.

We also organise a Carer's and bereavement group (see below) and a 'Walking for Health' group

**(Contact Ivor Vaughan 07979 934604 ).**

You can contact us directly or through the Health Centre.

## **PENSILVA HEALTH CENTRE CARERS AND BEREAVEMENT GROUP**

**Are you a carer, bereaved or lonely? Then come along and join our Group. Tea, Coffee and plenty of friendly chat and, when possible, local trips to various venues.**

**Meetings are held every third Thursday of each month at 11.30.a.m.  
Meet in Millennium House car park.**

**For any information please contact Jean Connor 01579 363221**



## **Struggling with Sight Loss?**

iSight Cornwall offers practical help to people living with sight loss in Cornwall including:

Low Vision: Advice for low vision aids

Assistive Technology: Advice on products

Benefits Advice: Assistance to claim entitlements

Equipment Demonstration: Advice on gadgets

Social Clubs & Activities: Links to clubs & activities in the county

For more details Telephone 01872 261110 or visit

[www.isightcornwall.org.uk](http://www.isightcornwall.org.uk)

# **St Ive Methodist Chapel**

## ***Services for September 2018***

<b>Sun 2nd Sep</b>	11am	Mr Bernard Melling
<b>Sun 9th Sep</b>	11am	Mrs Helen Burke
<b>Sun 16th Sep</b>	11 am	No service
	3:00pm	Cornish Language Harvest Festival Service with refreshments
	6 pm	Rev Iris Bray
<b>Sun 23rd Sep</b>	11 am	Mrs Marguerite Smith
	5pm	Food 4 Thought at Pensilva
<b>Sun 30th Sep</b>	11 am	Mr Keith Mutton

Chattermakers craft group 7:30pm Thursday 13th and 27th September. All welcome.

Village Prayer Meeting 7:30pm Thursday 13th and 27th September. All welcome.

Saturday 29th September 11am to 1pm. Macmillan Cancer care coffee morning and cake stall to be held at the chapel. Please pop along and join us and let your friends know.

## **Trerosa Studios**

**Pottery & Woodturning activities for you to enjoy**

**Well equipped**

**All materials provided**

**Help / tuition from qualified teacher if required**

**01579 647247 or 07486 089466**

**Email: [bob@trerosacrafts.co.uk](mailto:bob@trerosacrafts.co.uk) [www.trerosacrafts.co.uk](http://www.trerosacrafts.co.uk)**

**High quality professional tools**

**Small friendly atmosphere**

# St Ive Church

## Services at 11:15am Every Sunday

- Sep 2nd**            **Together at Ten Merrymeet 10am**
- Sep 9th**            **Morning Service**
- Sep 16th**           **Holy Communion.** Lunch follows this service
- Sep 23rd**           **Family Service.** Small pets welcome
- Sep 30th**           **Together at Ten Quethiock 10am**

---

## Other September Events

- Fri 7th**            **Produce Market and Bric-a-brac**  
Home made cakes etc, fresh vegetables, locally made pasties, pickles, jams and much more. Farm fresh meat from Trehill Farm Produce.
- Sun 16th**        **Lunch in Church 12:45pm.** All welcome. 2 course lunch only £7.

**Reverend Margot Davies retired on the 31st August.** We were all very sorry to see her go and thank her for the time she has spent with us. We wish her the long and happy retirement she deserves.

Services will remain the same all at 11:15 except for the first Sunday of the month when there will be no service at St Ive but we will join our friends at Merrymeet for a Together at Ten Service. Until a new appointment is made, please contact the Church Wardens for any information.

Church Wardens        Brian Dwelly        **01579 364010** btdwelly@aol.com  
   Colin Catchpole **01579 383867** ccatchpole@hotmail.com

Donations for Liskeard Food Bank can be left in the Church each day between 10am & 4pm

# ST JOHN'S CHURCH, PENSILVA

## Services for September 2018

Anglicans and Methodists share services at 11 am each Sunday, coffee served before service

Sunday 2nd	11am	Rev Mark Pengelly
Sunday 9th	11 am	Café Church
Sunday 16th	11am	Anglican Holy Communion
Sunday 23rd	11 am	Rev. Sue Hill with Holy Communion
	5pm	<b>Food for Thought</b> at St John's Church
Sunday 30th	11 am	Rev Chloe Jones

**Café Style Church** followed by coffee and chat, Thursday mornings, 10am, everyone very welcome.

**Afternoon Tea**, Friday 7th Sep, 3pm at St John's. Cup of tea and a chat. Everyone welcome to join us.

**Fellowship Group** 7:30 pm on Friday 14th and 28th September. Contact Carolyn on 362698 for details.

**Prayer Group:** 2pm Fri. 7th & 21st September. Please ring Carolyn 362698 if you would like prayer for yourself or someone else.

*For further details of the Services held in St John's, if you know of any illness or need in the village or if you would like your wedding or baptism in the church, please contact:*

*Geoff Cox - 362698 or Frances Tucker - 363718*

## Alford Joinery - For all your joinery needs

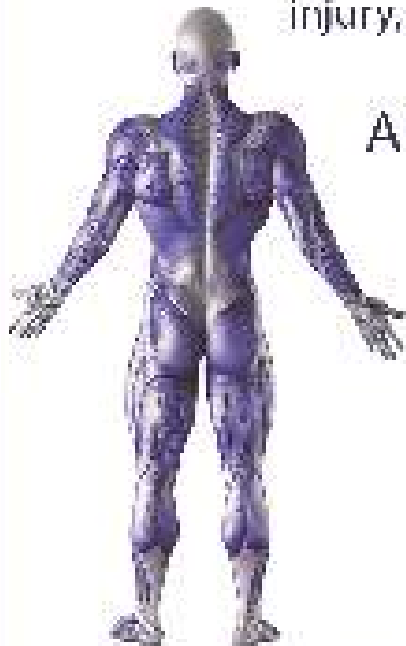
Specialists in bespoke doors, windows, staircases, conservatories, etc.

- 20 years experience
  - Large or small jobs
  - All joinery hand-crafted
  - Top quality FSC certified timbers
  - All joinery can be fitted if required.
- 01208 873444 or 07757 666460  
info@alfordjoinery.com  
www.alfordjoinery.com

## QUALIFIED RAYNOR MASSAGE THERAPIST

RELAXING AND THERAPEUTIC DEEP TISSUE MASSAGE TREATMENTS

Effective for many different types of chronic pain, sports injury, stress and tension related problems



APPOINTMENTS AVAILABLE AT

THE WELLBEING CENTRE  
LISKEARD 01579 344090

THE NATURAL WAY  
LISKEARD 01579 345300

Contact : Tina North  
Phone : 07720 832322

[tina-north@massage-therapy-cornwall.co.uk](mailto:tina-north@massage-therapy-cornwall.co.uk)



## R J Gardening & Handyman Services

All aspects of gardening and handyman work undertaken.

- ~Local and Trustworthy
- ~Hard Working
- ~Reliable and Experienced
- ~No job too small
- ~Competitive rates

Contact Raymond on:

07541 229064 or 01579 347622

[raymond\\_pearcegb@yahoo.com](mailto:raymond_pearcegb@yahoo.com)

Find us on Facebook.





# R&C



## Groundworks and Landscapes

Fencing	Patios
Paths & Steps	
Turf & Astro turf	
Driveways	Rendering
Retaining walls	Decking
Digger work	
Footings & foundations	

**And more**

Free no obligation quotes

**Call Rob on:**

**07518246666 or  
01579 641802**

# Window Cleaner Window Cleaner

Also any upvc cleaned

i.e. fascias, gutters, etc.

gutters cleared & unblocked

Please phone Rob

**07709 053464**

# Window Cleaner Window Cleaner

Save Costly Energy!



## SOLARTEC

Windows &  
Conservatories Ltd

**'A' Rated WINDOWS & DOORS  
at BEST PRICES EVER!**



Professionally fitted and finished by us with a



10 year ins. guarantee.  
In all colours



**NEW**

**FACTORY SHOP  
SUPPLY ONLY**

For all your windows, doors, conservatories,  
fascia, trims, guttering and sealants

**7-10 DAY TURN AROUND ON WINDOWS,  
DOORS and CONSERVATORIES**

**TEL: 01579 343425**

**FAX: 01579 344500**

WEBSITE: [www.solartecwindows.co.uk](http://www.solartecwindows.co.uk)

EMAIL: [sales@solartecwindows.co.uk](mailto:sales@solartecwindows.co.uk)

**KEEPING JOBS IN CORNWALL**



# PJR Garden Services

## Phil Rule

All aspects of garden  
work - grass / hedge  
cutting, patios, fencing  
etc.

**Mobile 07387 449004**

**Tom Marshall**

**TM Plastering**

Plasterer and Property Care

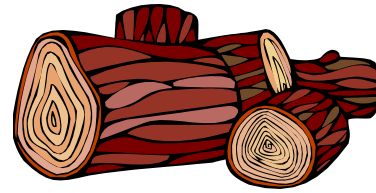
**07544819284**

Tommarshallcornwall@gmail.com

**Free estimates**

- Internal plastering
- Internal / external rendering
- Damp proofing
- Stud Walls
- Patio laying
- Chimney repairs
- Pointing
- Painting

**SEASONED LOGS**



**MIXED LOAD**  
or  
**HARDWOOD**

Tel Jonathan

Mobile 07966 070725

or  
01579 363157

Also tree/hedge work  
undertaken

## **DAVID HEWETT GARDEN SERVICES**

**For all aspects of garden care:**

**lawn mowing, grass cutting,**

**strimming, hedge cutting,**

**clearance, and more.**

**01579 363796**

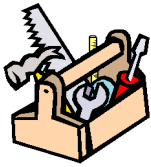
**25 years experience.**

**Fully insured.**



# KEEP IT TIDY

General Property Maintenance  
including Decorating, plus Electrical



**HONEST PRICE**  
for  
**QUALITY WORK.**



**No Job Too Small**

**Kit Rickard**

18 Higher Glen Park  
Pensilva

**Phone:** 01579 363378

**Mobile:** 07855 699071

**Email:** [KITKeepItTidy@hotmail.com](mailto:KITKeepItTidy@hotmail.com)

# Chiropodist

Fully qualified, experienced and  
insured Chiropodist/Podiatrist

- Nail cutting, corns/callus,  
diabetic foot care etc
- Personal home visits, groups  
and residential homes

**Contact Clare:**

**07757973709**



# DOG GROOMING

**40 YEARS EXPERIENCE**



**SMALL and MEDIUM Dogs  
Groomed to Your Request**

**LISKEARD AREA  
Inquiries Welcome**

**Call Patricia: 07517 658862  
TO YOU OR TO ME**



Domestic Electrical  
Property Maintenance  
Interior & Exterior Work  
Carpentry :: Decking  
Kitchens :: Bathrooms  
Wall & Floor Tiling  
General Plumbing

**MCCARTHY PROPERTY MAINTENANCE**

**Electrical Safety  
Register** incorporating  
ELECSA  ECA  
Certification Ltd

**HIGHLY REGARDED LOCAL BUILDER  
COMPETITIVELY PRICED  
COVERING THE SOUTH WEST**

Contact Dominic

07968 599 675

01579 362 945

[info@mccarthypropertymaintenance.co.uk](mailto:info@mccarthypropertymaintenance.co.uk)

[www.mccarthypropertymaintenance.co.uk](http://www.mccarthypropertymaintenance.co.uk)

Alphaplas Limited t/a  
**Trims&Windows**

[www.trimsandwindows.co.uk](http://www.trimsandwindows.co.uk)

**Double Glazed uPVC**  
**Windows-Doors-Conservatories**  
'Conservation' vertical sliders a speciality



Supply only to Trade & DIY or  
Full installation registered with

**FENSA inc**  
10yr insurance backed guarantee



Email: [alphaplas@btconnect.com](mailto:alphaplas@btconnect.com)

**01752 840078**

Installation team based in  
Pensilva, Looe & Torpoint

# Owna

Mobile Device and PC repair

07766013897

alex@owna.co.uk



For repair of mashed mobiles, trashed tablets, or poorly PC's visit [www.owna.co.uk](http://www.owna.co.uk) or call Alex for a free quote, no fix no fee

## MARK FITCH CHIMNEY SWEEP

- \* BRUSH & VACUUM
- \* CLEAN, RELIABLE SERVICE
- \* COVERING ALL S.E. CORNWALL
- \* DISCOUNT FOR MULTIPLE CHIMNEYS
- \* COWLS & GUARDS FITTED
- \* STOVES SERVICED



*Call  
Mark on:*

01579 350762  
07773 462643





## Affordable Counselling

**Caring, confidential,  
non-judgemental**

- Increased confidence and self esteem
- Help to cope better at difficult times
- Improved relationships
- Clarify confused thoughts & feelings
- Assertiveness
- Personal insight
- Improved emotional health
- Available for youth and adults

**Isabelle McGarahan BA, PGCE  
Dip in Therapeutic Counselling,  
Member of ACC, DBS cleared**  
[www.im-counselling.org](http://www.im-counselling.org) email:  
[isabelle@im-counselling.org](mailto:isabelle@im-counselling.org)  
**01579 344090/07857326229**



Steve West



## Aerial Services

Installations / Repairs to  
TV Aerials, Satellite Dishes  
and Radio

Customised to your requirements

Wireless network &  
Mobile phone extensions

TV mounting on walls  
Help setting up systems  
and demonstrating.

Phone 01726 212761

Mobile 07941 606 183

e-mail [stevewestaerials@uwclub.net](mailto:stevewestaerials@uwclub.net)

## PENROSS

Rosecraddoc Lodge Holiday Bungalows  
(Between Pensilva & Liskeard)



Ideal for visiting family and friends !  
Refurbished in 2018. Sleeps 4. Electric,  
heating, bedding and towels inc in rent.  
Patio. Free wi-fi. Follow us on Facebook.

Sorry no pets and no smoking.  
Contact Julie Tucker 01579 362221 or  
[penhargetfarm@gmail.com](mailto:penhargetfarm@gmail.com)  
for 15% discount

## NICOLA GREENE

BSc (hons) Podiatry MChs

HPC Registered Chiropodist/Podiatrist

**Home Visit Practice treating all  
your foot care needs:**

- Nail Cutting
- Corns and Calluses
- Thickened Nails
- Dry Cracked Skin
- Verrucae
- Foot Pain
- Diabetic Foot Assessments
- Wound Care

**T: 01579 590027**

**T: 01752 291565**

**M: 07786164205**

**E: [nicki\\_greene@yahoo.com](mailto:nicki_greene@yahoo.com)**

# Group Travel

Enterprise Park, Midway Road,

Bodmin, Cornwall

PL31 2FQ

Tel: 01208 77989



## 2018 COACH EXCURSIONS

11<sup>th</sup> SEP - WIDECOMBE FAIR  
15<sup>th</sup> SEP - TOBY'S HARVEST FESTIVAL  
27<sup>th</sup> - 1<sup>st</sup> OCT - SHROPSHIRE BY COACH, RAIL & CANAL  
3<sup>rd</sup> NOV - BRIDGWATER CARNIVAL  
17<sup>th</sup> NOV - FESTIVAL OF LIGHT @ LONGLEAT  
23<sup>rd</sup> - 26<sup>th</sup> NOV - TURKEY & TINSEL @ BOURNEMOUTH

24<sup>th</sup> NOV - CLARKS SHOPPING VILLAGE, STREET  
8<sup>th</sup> DEC - BATH CHRISTMAS MARKET  
16<sup>th</sup> DEC - MOUSEHOLE & ANGARRACK LIGHTS  
2019  
26<sup>th</sup> APR - 1<sup>st</sup> MAY - ISLE OF MAN SPRING TOUR

16 TO 70 SEAT COACHES AVAILABLE FOR PRIVATE HIRE. CORPORATE/ VIP, EVENTS & CONFERENCES, WEDDINGS (CAN INCLUDE STAG & HEN PARTY PACKAGE), HOLIDAY TRANSFERS, FUNERALS, DAYS OUT, GROUP TOURS, GOLFING HOLIDAYS & SPORTING EVENTS.

FOR BOOKINGS AND A BROCHURE PLEASE CALL

**01208 77989 / 01208 72669**

Website: [grouptourcoachhire.com](http://grouptourcoachhire.com) Email: [benneymoon@btinternet.com](mailto:benneymoon@btinternet.com)

## Martin Hoare – Local, Reliable, Competitive



WHEEL DIGGER FOR HIRE  
ALSO AVAILABE 'BREAKER'  
AND NEW CONCRETE  
'CRUSHER BUCKET'

ALL AT COMPETITIVE RATES

GROUND WORKS  
DRAINAGE  
NEW DRIVEWAYS  
SEPTIC TANKS &  
'SOAK AWAYS' INSTALLED



LASER LEVEL FOR HIRE  
QUOTES AVAILABLE



Phone 01579 363517

or

Mob 07863 291213



INDEPENDENT  
FAMILY  
FUNERAL  
DIRECTORS



Undertaking your individual  
needs with efficiency,  
compassion and care...

Perfect Choice Prepayment  
Funeral Plans from £3249.00

(Prices correct as at 01.01.2013)

01579 362358



Avalennek, Caradon Town,  
Upton Cross, Liskeard  
Cornwall PL14 5AR  
Telephone 01579 363598  
Mobile 07901 538132  
[chrisrounsevell@tiscali.co.uk](mailto:chrisrounsevell@tiscali.co.uk)

## HOG ROAST EQUIPMENT HIRE AND MEAT SUPPLY

Hog Roasts For Those Special Occasions  
Self Catering or Hassle Free Service  
Everything done to your special requirements

**CHRIS ROUNSEVELL**  
TRADITIONAL BUTCHER



## Local Accountant offering fixed fee accounting services

With over 20 years experience, I am a fully qualified, friendly, local accountant

- |   |   |
|---|---|
| <ul style="list-style-type: none"><li>✓ Annual Accounts for Sole Traders and Partnerships</li><li>✓ Book Keeping &amp; Payroll</li><li>✓ Personal Tax Planning</li><li>✓ Company Accounts</li><li>✓ Business Support &amp; Advice</li></ul> | <ul style="list-style-type: none"><li>✓ Self Assessment tax returns</li><li>✓ iXBRL tax filing</li><li>✓ Tax investigation Fees Insurance</li><li>✓ Company Secretarial work</li><li>✓ Tax calculations for Sole Traders and Partnerships</li></ul> |
|---|---|

Kate Vaughnley FCCA - Chartered Certified Accountant  
Website : [www.kvaccountingsolutions.co.uk](http://www.kvaccountingsolutions.co.uk) or Email : [katevaughnley@gmail.com](mailto:katevaughnley@gmail.com)  
Telephone : 01579 364083



## GRAB LORRY HIRE

PLANT HIRE & GROUNDWORKS

07970 270218 | 01579 344402

**MORE COST-EFFECTIVE THAN SKIPS  
FOR SOIL, RUBBLE & GREEN WASTE  
REMOVAL!**

CAN REACH OVER WALLS &  
FENCES FOR COLLECTION  
FROM INACCESSIBLE AREAS

SKIP BAGS AVAILABLE FOR  
SMALL JOBS



**OPEN FOR RETAIL, TRADE & COMMERCIAL ENQUIRIES**

# CORNWALL TILE CENTRE

[www.cornwalltile.com](http://www.cornwalltile.com)

tileitalia

The Natural  
TILE & STONE COMPANY

BESPOKE  
TILE IMPORTS



Tiles & Stone for:

- ◆ Bathrooms & Kitchens
- ◆ Living Areas
- ◆ Conservatories
- ◆ Patios & External Areas
- ◆ Wet Rooms & Spas
- ◆ Swimming Pools
- ◆ All Commercial Applications

- ◆ Local & National Delivery Service
- ◆ Sample Loan Service
- ◆ Free Quotations
- ◆ Free Design Ideas & Planning Advice
- ◆ Trade Enquiries Welcome
- ◆ Wet Room Specialist
- ◆ Full Range of Adhesives & Grouts

### Pensilva Showroom

Open Mon - Thurs 8.30am - 5pm  
Friday 8.30am - 3pm  
Saturday 9.00am - 1pm

### Wadebridge Showroom

Open Mon - Fri 9am - 5pm  
Sat 10am - 3pm



**01579  
362264**

**DISCOUNT TO ALL PUMP READERS**





*The*  
**RACEHORSE  
INN**



*Gastro Pub*

---

**Head Chef Phillip Bradshaw**

---

Ray and Flori welcome you to  
the Racehorse INN

A fine food experience in a convivial  
atmosphere

Our superb Sunday lunch is one to be tried

Open Every Day for Lunch and Dinner

[info@racehorseinn.co.uk](mailto:info@racehorseinn.co.uk)  
[www.racehorseinn.co.uk](http://www.racehorseinn.co.uk)

Take-out: Pizzas & Fish'n'Chips now available



**North Hill Village, Cornwall, PL15 7PG**

**01566 786 916**

## J. H. Simmons

Painting & Decorating



**No Job Too Small**

For more information  
Please call John  
01579 362688

7 East Park, Pensilva

## D.J.A. BUILDING SERVICES

ALL ASPECTS OF PROPERTY  
MAINTENANCE BUILDING &  
REFURBISHMENT

- \* Bespoke Furniture and Kitchens
- \* Wardrobes and Bookcases
- \* Garden Sheds, Poultry Houses & Small Animal Shelters
- \* Over 30 years' experience
- \* Fully insured
- \* References available
- \* Free estimates
- \* No VAT

**Call David on 01579  
364050 / 07767662635**

# Westwood Garden Maintenance



*Antony Watts*

*Grass Cutting, Clearance*

*Weeding, Turfing*

*Hedge Cutting*

*Patio Cleaning, Planting*

*Regular Visits / One-off Contracts*

*Residential & Commercial*

**FREE ESTIMATES**

01579 362019 [www.westwoodgm.co.uk](http://www.westwoodgm.co.uk) 07952 094472



**THE HOME OF WOOD**



**OPEN TO THE TRADE & PUBLIC  
FOR ALL YOUR HOME AND GARDEN NEEDS**

**DECKING • FENCE PANELS • OAK FLOORING • STRUCTURAL TIMBER  
GARDEN FURNITURE • GATES • DOORS • CEDAR CLADDING**

**TELEPHONE 01503 240308  
EMAIL: STACY@WHBOND.CO.UK**

---

**WWW.BONDTIMBER.CO.UK**  
TRERULEFOOT • SALTASH • PL12 5BW

# Pensilva Stores

## Amazing Value

**Premier**  
a great deal more from your local store  
**Mon-Sat. 7:00 AM. – 9:30 PM.**  
**Sunday 8:00 AM. – 9:30 PM.**

- ✓ Fantastic Special Offers every month!!! (See store leaflets)
- ✓ Come and Check out our great deals on Wine, Beer and Spirits
- ✓ Local Produce: Homemade Butter and Clotted Cream, Meat from our local butcher
- ✓ Cornish Fresh Fruit and Vegetables
- ✓ Fresh Bread, Pasties and Cakes
- ✓ Take Away Coffee, tea and hot chocolate
- ✓ Newspapers and Magazines, Greeting Cards
- ✓ Paypoint, Lottery

**\* Free to use ATM \***  
**\* Card Payment \***

*Friendly Staff + Service with a Smile !!!*

**Pensilva Stores is a family run business who have been serving local people and visitors for more than 21 years.**

Higher Road, Pensilva, Liskeard, Cornwall PL14 5NQ

Tel: 01579 362547

# MENDOLOGY

## Garage Door Specialist

- Repairs
- Servicing
- Installations

Out of hours service  
call Dave anytime 07974 442645


**MENDOLOGY** COMMERCIAL DOORS LTD

[www.mendologydoors.co.uk](http://www.mendologydoors.co.uk)

**01579 363760**

# PensilvaCars

01579 363516

- ✓ MOTs Class 4
- ✓ Service
- ✓ Repair
- ✓ Tyres
- ✓ FREE Courtesy Car
- ✓ Car & Van Sales
- ✓ Diagnostics
- ✓ Air Conditioning
- ✓ 

**We have offered a supply, fit & balance of tyre service for 10 years at competitive prices.**

**Most of our tyres can be supplied the same day.**

**LOCAL RECOVERY £45.00**  
**[www.pensilvacars.co.uk](http://www.pensilvacars.co.uk)**  
**[pensilvacars@hotmail.co.uk](mailto:pensilvacars@hotmail.co.uk)**

We can service and repair your car to manufacturer specification, keeping your dealer warranty without main dealer expense.





# KEITH RICHARDS

## Motor Body Repair Specialists

A family run business with fully equipped & maintained workshops & a focus on  
Customer Care

- ◇ Motor Body Repair Specialist
- ◇ Mechanical Repairs
- ◇ Servicing to All Makes & Models
- ◇ Computer 4 Wheel Alignment
- ◇ 24 Hour Recovery Service
- ◇ Renovations & Re-sprays
- ◇ Member of RMI (Retail Motor Industry Federation)
- ◇ Latest Diagnostics (including specialists for VW, Audi, Seat, Skoda & Vauxhall)

With over 30 years' experience we aim to provide you with:- Value for Money -  
Friendly Service - Professional Approach - Expert Advice that you Can Trust  
(Visit our website for more details)

Pensilva Industrial Estate, St Ive Road, Pensilva, Liskeard, Cornwall PL14 5RE

Tel: 01579 362593

Email: [keith@keithrichardsmotorbody.co.uk](mailto:keith@keithrichardsmotorbody.co.uk)

Fax: 01579 363194

Website: [www.keithrichardsmotorbody.co.uk](http://www.keithrichardsmotorbody.co.uk)

Wm. Newham & Sons Est. 1835

Proprietor Robbie Savill AWCB

## CHIMNEY SWEEPS & BLACKSMITHS



CHIMNEY SWEEPING

BIRD GUARDS, COWLS & POTS FITTED

CCTV INSPECTIONS & SURVEYS

STACK REPAIRS & REBUILDS

RIGID STEEL SYSTEMS ERECTED

STAINLESS STEEL and PUMPED CONCRETE  
CHIMNEY LINING

STOVES SUPPLIED, INSTALLED & REPAIRED

FIREPLACE ALTERATIONS & RENOVATIONS

FULL RANGE OF FIREPLACE FURNITURE  
made to order

**01579 347777**

need somewhere to stay ?  
between homes ?  
family/friends visiting ?

Cutkive Wood  
  
Holiday Lodges

ideal for Pensilva  
& St.Ive

please call Jackie on  
01579 362216

# J.J.CHILD

## PLUMBING AND HEATING ENGINEER

### OIL AND GAS APPLIANCE SERVICE , REPAIR AND BREAKDOWNS

### LANDLORD'S CERTIFICATES

OVER 25 YEARS EXPERIENCE  
CALL JOHN ON 01579 362336  
MOBILE 07837921086



502322

# Bargain Corner Free Ads up to £50

Ads are free for items up to £50. £5 charge for items over £50. Please ring the Parish Office on **01579 363096** or leave a note at Millennium House reception or email [parishpump@btconnect.com](mailto:parishpump@btconnect.com).

**\*\*\*Please let us know when your item has sold\*\*\***

Free standing **wooden screen** w/ opaque glass panels on top. 5'6" x 5'6". **£30.**  
**01579 362204**

Concrete Coal Bunker **£20**  
Heavy Duty Plastic Composter **£15**  
**01579 363892**

Morphy Richards Breadmaker as new **£10**  
Challenge Leaf Blower **£10**  
Hand Mower **£5**  
Giant Phone **£3**  
3 Cocktail Glasses with Shaker and recipes **£15**  
**07969 310603**

Electric **sewing machine**, sews well, ideal for beginners **£30 ono.**  
Electric **clothes dryer** (Dry Buddie). Brand new, never used. **£30.**  
**07980 284002**

Old Metal **School Locker** with six compartments, 6' tall x 3' wide x 1'6" deep. Ideal for all sorts of storage uses. **£45.**  
**Fire Fighting Hose**, to BS 3169 1986 standard 100ft long with a 1" internal bore with a wall mountable reel all in good condition ideal for all sorts of uses, market gardening, building sites etc. **£50 ono.**  
Set of 3 solid galvanised watering cans for use or as garden ornaments **£20 ono.**  
Wooden **Sewing Box** in Good Condition with five slid out compartments. **£15 ono**  
**01579 384658**

**Please let us know when your item has sold.**  
**01579 363096 or**  
**[parishpump@btconnect.com](mailto:parishpump@btconnect.com)**

**AURA 3 Tent**, colour Green; only used for 8 nights camping. Bought for £179.99 but offering it now for **£100** as I have had to give up camping.

Also the **matching Porch Extension** - BRAND NEW, never unpacked since buying for £99.99, but now for sale at **£50**. Real bargains. If you're interested in both, please make me a reasonable offer as I can no longer make use of them. **01579 362574** (Pensilva)  
Please note corrected telephone number

**WANTED. Chicken coop** in reasonable condition. Large enough for three hens.  
**01579 363833**

**4 frame** honey extractor (plastic). Good order. **£45.**

**Carpet shampooer** **£6**

**Dyson hoover** **£5**

**01579 320401.**

Child's garden metal **swing** & accessories. **£15. 01579 362085**

Wood-framed **mirror** 2'6" x 3'7". **£10.**  
**01579 363812**

**Car Ramp** 6' long. Folds in half. Unused. Good for loading mobility cars. **£49.**  
**01579 384222 or 07828 016665.**

**Mobility Walker** Hardly used. Cost about £80 new from Argos. Will sell for **£40**

18 **Demijohns** **£1 each.** **01579 362001**

**Lec Fridge.** Excellent working order. **£50**  
Can deliver Pensilva area. **01579 363791**



TOSHIBA Regza **32" TV**. Digital , HD ready 1080p, 3xHMDI, 2 x Scart. Freeview Ready. Full Instructions & remote controller. **£50. 01579 362607**

Sony **Home Cinema System** CD/DVD/ Tuner/Amplifier with 5 small wired speakers, sub-woofer and remote control. **£50. 07841 717913.**

Four wheel disability walker with seat and brakes. **£35.**  
Three wheel disability walker with bag and brakes. **£30. 01579 362417**

Dremel Moto Saw. As new condition **scroll saw/fret saw**. Ideal for hobbyists. Own, plastic carry case but is missing vacuum cleaner adapter & instruction booklet. Instructions available on line. \*\*\* Now **£20 \*\*\* 01579 362207**

Superdry clothing **2 windcheaters**, black with fleece lining. excellent condition **£20 each** ono **2 hoodies**, 1 purple, 1 navy, good condition **£15** each or ono

Black sherpa lined **windcheater**, excellent condition **£30** ono

All sizes XS & S

Jack Wills **wool sweater** size 8 and Johnnie B red Sherpa lined hoodie age 11-12 **£10** each ono

Photos can be emailed. **07724 111132**

Berry's **sideboard**. Circa 1960s. 171cm high x 44.5cm deep x 78cm high. 2 cupboards with one reversible door. 4 drawers, one felt cutlery drawer. **£50 ono.** Unusual iridescent paper **side lamp**. Approx 31" high on small base. **£5.** **Buyer collects. 01579 345783.**

**Reikie** or **Massage Table etc.** Very good condition. (Fold away). **£35.** Pensilva area. **01579 363192**

Folding **3-wheel walker** with brakes and bag. Ideal mobility aid. Hardly used. **£50. 01579 363081.**

Brand new, never worn, **motor bike helmet**, with visor and inside sun visor, red, grey & white. Size medium. Paid £90, will accept **£30** or nearest offer. **07980 284002**

**Automatic guitar tuner** (quick tune) includes electronic pitchpipe.v.g.c as only used a few times/with box.**£5.**

**Inflatable punch tower**, foot pump included, (160cm h). New still in box. **£5.**

**Ladies motorbike jacket** Rayven, size 12, black/pink, as new. **£50.**

**Men's black leather bike jacket**, 52L, & trousers, 40L, TARCA, vgc. **£50** the set.

**Baby bouncer** for up to 6mths. East coast, light fawn/with white polka dots design material, vgc, **£10.**

**07743 416676** (Minions area)

**Nest of 3 tables** yew wood and glass top. Good condition **£45.**

**3ft Mattress** in clean condition. Ex quality. **£50.**

**3ft Divan** to match mattress. VGC. **£40.**

**3ft Pine headboard** very attractive **£20.**

**01579 343990** or **07553 928333**

Targus Notepac plus classic 16" **laptop case. Black £5.**

**Leather black briefcase** 17½" x 12½" x 4". **£10 o.n.o.**

Both in good condition. **01579 362846**

**Shires Show jacket.** Black with purple Collar. Only been worn a couple of times. Ex. Con. **£25.**

**01579 343992** or **07810 178802**

**Homedics** Back Massager. Full lumbar or Lower Lumbar only options. Plus variable intensity. Fits any armchair. Can be seen working. Only used twice. Great Xmas present. **£50 ono.**

**07973 510693** St Ive.

**WANTED to buy**, a small piece of non-development, flat, accessible **land** within 5 miles of St Ive. Any type of land considered.

**Tel 01579 384658.**

## What's on in St Ive Parish ?

WHAT'S ON	WHEN	CONTACT DETAILS
<b>MILLENNIUM HOUSE</b>		
Aikido	Thursday 7:00pm	
Antique & Collectors Fair	4th Sunday Monthly 10:00 - 4:00	
Badminton Club	Mon & Tues 7:30pm. Fr. 8.00pm	01579 363594 (Carol & Nigel)
Book Exchange	Daily	01579 363096
Breath of Air	Monday 12.30pm - 2.30pm	01579 345989 Pauline
Country Dancing	Alternate Thursdays 8.00 - 10.00pm	01579 382402 Ray Buckingham
Ladies Netball	Friday 09:15 - 10:15am	07985 387472
Penmill Art Group	Friday 10am - 2pm	01579 363441
Pensioners Lunches	Tuesday 12:00 - 2:00pm	01579 363096
Short Mat Bowls	Thursday 7:00pm	01579 208528
Village History Group	Last Monday Monthly 7:30pm	01579 208754 (Angus)
Wildlife Group	Quarterly	01579 362539 ( Hilary)
Woman's Institute	2nd Wed Monthly 7:15pm	01579 363718 (Frances Tucker)
Yoga	Wednesday 7:00pm	01579 344464
Zumba Fitness Classes	Wednesday 7:00 - 8:00pm	01579 363096 (Millennium House)
<b>PENSILVA VILLAGE HALL</b>		
Brownies	Monday 4:00 - 6:00pm	01579 362239 Martha Oliver
Pensilva Wednesday Club	Wednesday 2:30pm	01579 363221 Mrs Jean Conner
Pensilva Snooker Club	Wed 7:00pm + Various times	01579 362091 Phillip Bond
Guides	Thursday 6:00 - 8:00pm	01579 363228 Caroline Hambly
MIMS	Friday 1.00 - 3.00pm	01579 343702 (Chris)
Rainbows	Friday 4:00 - 5:00pm	01579 362091 Lynne Bond
Rangers	For Info	01579 362982 Kirsty Oliver
<b>PENSILVA PRE-SCHOOL</b>		
Pensilva Pre-School	Monday-Fridays 9:00 - 3:15 (session times available)	07890 023924 Mrs Suzanne Kinsman (Manager)
Tiny Tots Toddler group	Friday 9:15 - 11:15am	07890 023924 Mrs Suzanne Kinsman (Manager)

## ST IVE INSTITUTE

Gardening Club	1st Monday monthly 7:30pm	01579 382762
St Ive Snooker Club	Monday & Thursday 7:00pm	01579 382315 R Bunkum
Art & Craft Group	Tuesday 1:00 - 5:00pm	01579 362216 (Jackie)
Post Office	Wednesday 10:30 - 11:30	
Coffee Morning	Wednesday 10:30 - 12:00	
St. Ive Singing Group	Thursday 4.00 - 5:30pm	01579 382341 (Clare)

**St Ive Institute available for hire, £3.50 per hour.** This includes the use of the kitchen & electric (excluding wall heaters, which are on a £1 coin meter)

**Contact Sue Sedgewick on 01579 383291**

Hall meetings will now be held quarterly on the second Tuesday of the month in January, April (includes AGM), July and October.

## ST IVE & DISTRICT GARDENING ASSOCIATION

**Meetings in St Ive Village Hall 1st Monday in the month at 7.30pm**

**Sat 1<sup>st</sup> Sep St Ive Village Show** with classes for your fruit, veg & flowers.

**Mon 3<sup>rd</sup> Sep** A talk on **Nerines**, Caroline Stone

**Mon 1<sup>st</sup> Oct** **Cornish Policing**, Simon Dell

*Visitors and new members are always welcome to join us.*

## ART AND CRAFT GROUP

We are a small friendly informal group who enjoy doing art and craft. If you paint or do any type of craftwork and would like to join us we'd love to welcome you.

There is no 'teaching' but help/advice is always forthcoming!

We meet at St. Ive Institute Hall from 1.00pm to 5.00pm Tuesday afternoons.

Only £3.00 for the afternoon plus 50p for tea/coffee and biccies.

If you are interested please give Jackie a call on **01579 362216**.

We look forward to meeting you.

# Pensilva Post Office

Located through the Café on the 1<sup>st</sup> floor of Millennium House



## Opening times:

Tuesday	-	9am to 1pm
Wednesday	-	9am to 12 noon
Friday	-	9am to 12 noon

## ***THE MEL BAR*** ***MILLENNIUM HOUSE*** ***Licensed Free House***

**GUEST ALES - LAGERS - CIDERS - WINES - SPIRITS**

### **Opening Hours**

Mon - Thu	-	5 pm to 11 pm
Fridays	-	3 pm to 11 pm
Saturday	-	12 noon to 11 pm
Sunday	-	12 noon to 11 pm

**01579 363096**

