

# THE PARISH PUMP



August 2018  
Edition 441



**The Newsletter for the Parish of St Ives**



**OPEN DAY AT THE GROWING PROJECT ON A  
SUNNY SATURDAY IN JULY!**

## Disclaimer

The articles appearing in this magazine do not necessarily reflect the views of the Parish Council nor of the Parish Pump Editor.

## Parish Councillors Telephone List

Peter Haimes (chair)	01579 362459	Alan Moss (vice-chair)	01579 362064
James Bruce	07411 192645	Marlene Carr	01579 362919
Martin Corney	01579 382450	Angie Haimes	01579 362459
Rosemary Farley	01579 384810	Tony Hodson	07973 536964
Nigel Libby	07968 891814	Kath Parkes	01579 362005
Ivor Vaughan	07979 934604	Craig Vaughnley	01579 364083
Sharon Daw (Cornwall Councillor) 07837 379305 slash.dash.daw@gmail.com			

## Meetings of St Ive Parish Council

**2nd Monday monthly:** Parish Council Meeting, alternating between St Ive Village Hall and Millennium House (please refer to notice boards for the agenda showing start time and venue each month). Any changes to the regular dates (i.e. Bank Holidays etc.) will be publicised accordingly.

**4th Tuesday Monthly:** Parish Council Planning Committee Meeting, 7 pm at Millennium House Pensilva, followed by the Parish Council Finance & Administration Committee Meeting commencing at 7.30 in the same venue.

## Date of Next Parish Council Meeting

Monday 13th August 2018 at 7:30pm at Pensilva



Devon & Cornwall Police  
Building safer communities together



101

Minicom 18001 101

## Police Community Neighbourhood Office

Your Community Support Officer is PCSO Bex STEED 30169.

email: CIOSNBMLiskeard@devonandcornwall.pnn.police.uk

To report a crime call 101 or go to [www.devon-cornwall.police.uk](http://www.devon-cornwall.police.uk)

In an emergency call 999



## Contact details for St. Ive Parish Council and for Millennium House

Address for correspondence: Millennium House, Century Square, Pensilva PL14 5NF

General Parish matters should be raised initially with the Parish Clerk, Jenny Hoskin, who will present them to the Parish Council.

Telephone: 01579 363096, email: [stiveparish@btconnect.com](mailto:stiveparish@btconnect.com)

For accounts matters for the Parish and for Millennium House contact John Body, Finance Officer: 01579 363096, email: [millenniumhouseadmin@btconnect.com](mailto:millenniumhouseadmin@btconnect.com)

Millennium House enquiries and reservations: 01579 363096

email: [millenniumhouse@btconnect.com](mailto:millenniumhouse@btconnect.com).

On the web: Millennium House Website: [www.cornwallvenue.com](http://www.cornwallvenue.com)

Parish website: [st-ive-parishcouncil.gov.uk](http://st-ive-parishcouncil.gov.uk) Facebook: [facebook.com/stiveparishcouncil](https://facebook.com/stiveparishcouncil)

## Parish Pump Information and Contact Details

To contact the editor please email: [parishpump@btconnect.com](mailto:parishpump@btconnect.com)

or phone the Parish office: **01579 363096**.

Hardcopy submissions by post or by hand to the Parish office, Millennium House.

Softcopy submissions: By email to the editor in MS Word, MS Publisher, pdf, Tiff or jpeg. Please use A4 pages and minimum 16 point font as the Pump is initially produced in A4 size and reduced to an A5 booklet at the printing stage. If in doubt please contact the editor.

**Current Advertising Prices** including VAT at 20%

Per issue:      Quarter Page £7.50      Half Page £15.00      Full Page £25.00

10% discount for 12 months paid in advance.

Bargain Corner free ads by email to the editor or drop off at the Parish Office.

**Deadline for the Parish Pump is STRICTLY 15th of every month**

## THE MEL BAR

Relax and wind down  
at the Mel Bar, Millennium House



## From the Editor

What's in this month's edition?

Quite a bit about the resurfacing of Millennium House car park including a letter from some concerned residents.

A report on the Pensilva Carnival. The Events Group / Carnival committee worked very hard again this year and are appealing for more people to join them so as to spread the load. There must be people put there who would enjoy getting involved in something like this. Take the plunge!

Nick Horler (my predecessor as Parish Pump editor) has thrown himself into fundraising efforts to raise money for MNDA, the Motor neurone disease association. Read his report on page 11. Good luck to Nick's wife and son, Sue and Tom, who are walking the Jurassic coast just about now to raise even more funds. Support if you can.

Lots more, but don't miss the baby donkey on page 16 !

Keep well - Joe

## Millennium House Opening Hours

### Reception

9am till 2.30pm Monday to Friday

### Community Coffee Shop

See separate notice on next page

### Bar

5pm till 11pm Monday to Thursday

3pm till 11pm Friday

12am till 11pm Saturday and Sunday

If no-one is available please leave a message in our **letter box** at the front of the building or on our answer phone by calling **01579 363096**.

# **IMPORTANT NOTICE**

## **MILLENNIUM HOUSE CAR PARK**

**WILL BE CLOSED FOR RESURFACING**

**FROM MON. AUGUST 6<sup>TH</sup> FOR 2 WEEKS.**

**Look out for notices about alternative parking areas, or walk if possible.**

**Sorry for the inconvenience.**

## *COMMUNITY COFFEE SHOP MILLENNIUM HOUSE, PENNSILVA*

Now open Monday to Friday!

Monday	10.a.m. to 1.p.m.
Tuesday	9.a.m. to 1.p.m.
Wednesday	9.a.m. to 1.p.m.
* Thursday	9.a.m. to 1.p.m.*
Friday	9.a.m. to 1.p.m.

\*Incorporating a Coffee Morning from 10.a.m. to 12 noon. To include free raffle ticket per week - raffle drawn end of each month. Special offer on coffee/tea/cake during this period. \*

Revised menu, offering more choices.

Open to smaller groups of up to 25 (pre booked) for  
Cream teas - buffet- lunch bites.

## Correspondence regarding the resurfacing of Millennium House Car Park

To Mr and Mrs Peter and Angie Haines and Pensilva Council.

We are unable at this time to put our names and contact details to this message as, unlike yourselves, we live in the village and cannot risk reprisals against us and our families as, unlike you, we would get little protection from the law.

In the next few weeks you are to get the Millennium car park resurfaced and we're not sure you understand the repercussions of such an act. What you are doing is creating a space where the local and not so local young car drivers are going to come and practice their own form of racing.

Almost every night and sometimes during the day, groups of youths gather in the car park and play loud music, hoot their horns, rev their very loud engines and then, eventually, leave the car park in a cloud of burning rubber having destroyed the peace and quiet that a village like Pensilva deserves. They then proceed to race up and down the road ignoring any speed limits or noise level regulations.

Unless you install severe speed reduction methods in the form of very large speed ramps (they totally ignore the speed cushions in Princess Road) you are likely to attract ever more numbers of the so-called "hoonigans" not only from this village but also from local towns.

Failure to address the issue of misuse of the car park will, we have no doubt, eventually result in death or serious injury to innocent users of the car park, the access roads or the main roads of Pensilva generally.

There is no threat, stated or implied in this message but video evidence has been gathered and will continue to be so until eventually no doubt it will be used in a court of law in the event of someone being hurt. Because of your refusal to acknowledge the danger that these people represent and/or your refusal to do anything about it, you become complicit in any motoring crime that is committed by these people so you should treat this letter as a wake-up call.

We implore you to take the sentiments in this letter seriously and do something about these people, something that will at least persuade them to practice their anti-social activities in a more remote area.

Kind regards, for now,

Concerned residents of Pensilva.

## Reply from St Ive Parish Council

Dear Concerned residents

The Parish Council would have liked to reply to you personally, however your anonymity makes that impossible.

The decision to resurface the car park was not taken lightly. The current surface is hazardous to users and an accident is waiting. Such an accident could result in severe injury claims as well as in pain and suffering to the injured person(s).

Your conclusion that the Parish Council neither acknowledges nor does anything about the behaviour of local boy-racers could not be further from the truth. The council is not however a police force and although reports are made, and the police do attend, we need your help.

The police are under pressure and an issue that on the face of it is problematic may not always receive their full attention. Unless and until you as individuals notify the police, they will not be aware of your concerns.

Contact details are on the inside front cover of the Parish Pump every month and are reproduced again below for your convenience. Essentially, ring 101 to report a crime or 999 in an emergency.



**Devon & Cornwall Police**  
Building safer communities together



**101**

Minicom 18001 101

### **Police Community Neighbourhood Office**

Your Community Support Officer is PCSO Bex STEED 30169.  
email: CIOsnbmliskeard@devonandcornwall.pnn.police.uk

To report a crime call 101 or go to:

[www.devon-cornwall.police.uk](http://www.devon-cornwall.police.uk)

**In an emergency call 999**

## CHAIRMAN'S COLUMN

I would like to start this month with a couple of thankyou's. Firstly to the Carnival Committee who once again organised a very successful Carnival, however if you want it to continue, the committee desperately want some more volunteers to help them. If you think you can help in any way contact Karen or Ruth in Millennium House. Secondly I would like to thank the W.I. who gave up the function room on the night of the World Cup semi-final, to allow the match to be shown on the big screen for all the fans, (sadly England lost). By the time you are reading this the resurfacing of Millennium House car park will be about to start, it starts on 6th of August and the car park will be closed for two weeks. We are trying to identify alternative parking so look out for notices in Millennium House, or walk if you can. (The bar, Coffee shop, Post Office and the rest of the building will be open as normal). July saw the start of the Police/Fire service road shows, in Millennium House car park, this event will happen each month. Please come and talk to the Police and tell them of your concerns, (its no good complaining to each other, or on social media that you never see a Policeman). If you don't tell them the problems, they can't do anything, and don't rely on others to tell them. Also the fire brigade will be in attendance to advise on all aspects of fire safety. Last month I said there would be no Parish Council meeting in August, but we have decided to have one after all. so there WILL be a Council meeting in August. Well that's all for now, I hope the weather stays fine for the school holidays, although the odd shower may be welcome for the garden. Pete Haimes.



**SEW, KNIT AND NATTER.**  
**WHY NOT JOIN US ON**  
**THE LAST TUESDAY OF EACH MONTH**  
**for sewing, knitting or just for a chat and a**  
**cup of tea or coffee and cake.**

**We meet at ST JOHN'S CHURCH, PENSILVA from 2pm to 4pm.**



## **Carnival 2018 - Report and Thanks**

Yet another great display of scarecrows. Thank you to all exhibitors.

To start the week the preschool and P.S.A. ran a walking and car treasure hunt. The rain didn't dampen enthusiasm and the car treasure hunt had a record number of entries. Fantastic support! Not so the euchre night, All Being Well quiz, film night, bingo and donkey derby which could all have done with more support. But thank you to the organisers of all these events; hopefully there will be more support next year!

Carnival Day, well the sun shone brightly, the atmosphere was buzzing, amazing, even with a certain football match going on. Thank you for turning up and supporting us.

Thank you to: Lynsey for our procession leader, handsome 'Fenton' your young shire such a lovely boy! The Tavistock Majorettes for giving it the carnival twist! All the fancy dress participants - fantastic! It wouldn't be a carnival without you. The same goes for our carnival queens Ellie and Alicia, King Roger and flower girls Primrose, Isla and Ruby; beautiful, thank you. Also to the Battens and Burns Carnival float, brilliant, thank you too!

The dog show was well supported. Thank you to Charlotte, Helen and Louise for organising it. To Ruth and her sisters for the baby show, which was won by Frazer Saunders. Thanks Vicky Bishop and Rachel Allin, our lovely raffle ladies and to everyone who donated prizes.

Thanks to Martin for our sound and electric, Pete Haines for commentary, James for setting up the outside screen, Mick and Pat for organising classic cars, Preschool and P.S.A. for the delicious BBQ, the café ladies for their refreshments, Tommy for helping Keith, Clive, Tony, Nigel and Phillip with all the tables, chairs, etc. And a big thank you to Summer, Ross and Colleen who worked so hard behind the bar. Thanks to anyone who put on a table or stall and to everybody who helped in any way at all. I hope I haven't forgotten anyone - sorry if I have!

A last thank you to all who came along and supported us. We do this for you all and for our community. Please come along and support our events group, we need more people! Next year, no support, no Carnival, I'm afraid. The date of the next events group meeting will be announced after the summer. Have a good one!

Karen x 😊

## Carnival Winners

### **FANCY DRESS:**

6-11 years	1st.	William Hicks
	2nd.	Scarlett McCarthy
	3rd.	Lottie & Katherine Thomas
12+ years	1st.	Iron Man, Dave Hicks
	2nd.	Thor, Nigel Hicks
	3rd.	Shirley
Pairs	1st.	The Vikings, Jeremy & Jill Harris
	2nd.	Iron Man and Thor
	3rd	Layla & Jack Johnson
Groups	1st	Preschool
	2nd	Hungry Caterpillar
	3rd	The Superheroes
Float	1st	The Cornish Circus
Best Baby		Frazer Saunders

### **SCARECROWS:**

1st	Slade Park Farm. Red Riding Hood
2nd	Fore Street. Gruffalo
3rd	School Road. Suffragettes.
4th	Fore Street. Hedge Cutter.

## **PLAY CHESS?**

Free tuition is offered to anyone wishing to play basic chess. This service is completely free and with no obligation. For anyone aged between 8 and 88.

Please phone William on 01579 362939

## CHARITY MUSIC NIGHT

A charity music night held at Millennium House on Friday 29th June was a great success with over £500 being raised for Motor Neurones Disease Association. Many thanks to those who attended and everyone who donated raffle prizes. Thanks must also go to “The Lost Cousins” for a great performance. This event was one of many put on by a group of fundraisers in memory of a relative and great friend Jeremy Durrant.

By the time this is published 7 intrepid walkers including local mother and son, Sue & Tom Horler, will have completed The Jurassic Coast Challenge, a 100Km [63 miles] walk on the Jurassic Coast in Dorset. The target set for this walk was £3000 but to date it is standing around £5000.

These fundraisers known as the Lifton Self Preservation Society started raising funds for MNDA in 2016. They have cycled John-o-Groats to Lands End, rowed a Cornish gig up the Thames in The Great River Race and put on several fundraising events. Their grand total excluding this years event stands in the region of £42000.

All money raised goes directly to the Cornwall branch of MNDA.



## **St Ive and District Gardening Association**

“What a treat!” One member’s comment summed up our visit to Marion Symons’ garden at Lynhaven in Gunnislake. Having started with a steeply sloping field Marion has created a treasure trove. Clever use of pots of all shapes and sizes bursting with colour and texture forms a front piece to a background of trees, shrubs, a pond and planted borders. The smaller pots give a flexibility enabling an ongoing floral display.

On Monday 6th August we will be visiting Troutbeck Nursery, leaving St Ive car park at 7:15pm. Visitors and new members are always welcome to join us. Then it’s time to get ready for St Ive Show on Saturday 1st September. For further details please ring 01579 382762 or 382512.

### **Supporting Guiding & Scouting Activities in Pensilva 200 CLUB Draw Results for June**

<b>1st No. 198 Mrs. T Bunkum £75</b>	<b>2nd No 145 Mr G Perrett £50</b>	<b>3rd No 35 Mrs M Kent £20</b>
------------------------------------------	----------------------------------------	-------------------------------------

**Thank you for your support**

### **MILLENNIUM HOUSE CAR PARK**

**WILL BE CLOSED FOR RESURFACING**

**FROM MON. AUGUST 6<sup>TH</sup> FOR 2 WEEKS.**

**Look out for notices about alternative parking areas, or walk if possible.**

**Sorry for the inconvenience.**



## PENSILVA WI JULY MEETING

Maybe you're one of those people who are confused by information on packaging in the supermarkets. You want to eat healthily, but don't understand the different ways the information is listed. Well, the ladies of Pensilva WI had the opportunity to test their knowledge when Kamella Clough showed an easy way of making sense of it all. She gave us a card she had produced and set us the task of putting everyday items of packaging into three piles, healthy, not healthy and somewhere in between. The members were also encouraged to try out the scales she had brought which didn't just show their weight, but Fat %, Bone Mass, BMI and Metabolic age amongst other things. Kamella then proceeded to explain the data on the printouts each lady had received from the scales. A very interesting, informative and dare I say 'healthy' evening was enjoyed by all. President Frances Tucker then warmly thanked Kamella for her talk.

Dates for your diary:

Wednesday 1st August – Social evening at Jean Hoare's. Bring and share supper.

Friday 3rd August – Flower Patch Quilt Show at Launceston and lunch at Cowslip.

Saturday 25th August – 'Oliver' at Sterts

Saturday 8th September – Horticultural Show. (It's not too early to start thinking of your entries).

Thursday 20th September 'Take a town like Saltash', Saltash Baptist Church 9.45am.

Tuesday 20th November – Flower arranging at St.Breward Church. 10.30am.

Birthdays this month: Barbara Bennett, Evelyn Dwelly and Jane Hall.

Monthly competition 'a Healthy recipe' 1st Jean Hoare, 2nd Janet Butcher, 3rd Verna Dawe.

Flower of the month: 1st Cherry Woodhouse, 2nd Jill Pascoe, 3rd Mandy Smee.

There is no August meeting, the next meeting will be on Wednesday 12th September at Millennium House, 7.15pm. when Alan Moss will be talking about the work of Blood Bikes. All will be made most welcome.

**SCHEDULES FOR THE HORTICULTURAL SHOW ARE AVAILABLE AT MILLENNIUM HOUSE, PENSILVA. PLEASE SUPPORT THIS EVENT.**

# THE Growing Project

PENSILVA



As I am writing this it is raining, for the first time in at least 14 days! I realise I write about the weather entirely too much but the current conditions have made growing veg a real struggle. The intense heat has been beyond the temperature salad leaves and Kohl Rabi germinate at, and for the first time since autumn we have no lettuces to pack into our veg boxes. Our dedicated volunteers have had to water our outside beds daily for the first time in several years and it has paid off with sweetcorn growing tall, purple sprouting broccoli bushing out and squashes and courgettes popping up everywhere, literally overnight.

This year we are experimenting with some different varieties of vegetable including round cucumbers 'Crystal Lemon', round courgettes 'Geode' and spaghetti squash. These were part of the seed order that we put together with our founder Ruth in the last weeks of her life, I hope she would be happy with the results and that our customers like them also.

By the time you read this on the 1st of August our open day will have been a week before and hopefully lots of you will have visited to see what we grow and what we do.

Our volunteer days are continuing on Wednesday 10-2pm and Thursday 12-3pm and we would be delighted to welcome anyone that would like to come along.

For those that are not our customers, there are two ways you can buy from us - you can order a vegetable box and have it delivered to your door weekly or fortnightly. We offer a regular and a large box and also a fruit box. You can also shop at our purple roadside stalls where you can find a variety of veg grown on our land and also from Riverford at competitive prices.

Our contact details are : Email [growingprojectpensilva@gmail.com](mailto:growingprojectpensilva@gmail.com)

Phone: 07398 828783 for veg box enquiries

Phone: 07854 332865 for project admin/board secretary

You can also find us on facebook

# Students Win at Royal Cornwall Flower Show

Transferable Skills Training special needs students scope a prestigious third prize at the Royal Cornwall Show for their planted container which they built in the shape of a tractor to celebrate the importance of farming within our community.



Ashley Bonner, Sam Pitt, Jordan Rollins, Jay Mobbs and Ethan Gordon spent three months designing and building the wooden tractor planter. It was then planted up with a mixture of herbs and flowers grown by adults who suffer from mental health disorders who attend Merryhue Farm every

Wednesday to gain confidence and learn coping strategies to help them deal their mental health conditions.

Nikki Markham founder of Transferable Skills Training said, “This demonstrates what I have always believed that anyone given the right opportunities and support can achieve amazing things. Watching different groups come together and support each other to produce such an incredible planter demonstrates just that. I am so proud of everyone involved in this project”

All the young people involved in building the planter live in St Ive, Pensilva or in Callington and have been attending TST’s Outdoor Activity programme a course designed to help young people with autism or special educational needs learn outdoor skills that will help them go into supported work placements or long-term volunteering positions.



## Very Rare New Arrival at Merryhue Care Farm

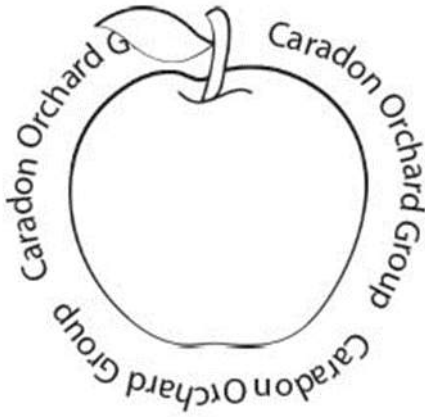
Few people driving between Callington and Liskeard have failed to notice the two large Poitou donkeys in the fields at Merryhue Care Farm. The Poitou donkey is a breed of donkey originating in the Poitou region of France. It is one of the largest donkey breeds, and was selected for size so that it could be used for the production of large working mules, in conjunction with the Poitevin horse breed. It is known for its distinctive coat, called a cadanette, which hangs in long, ungroomed cords.

In an audit conducted in 1977 it was revealed that there were only 44 Poitou donkeys worldwide. Even now after decades of dedicated conservation breeding the Poitou breed is still registered as "Critical" and is on the Conservation Priority List, a category for breeds with less than 2,000 animals worldwide. There are believed to be less than 800 world wide and only 60 in the UK.

We are therefore delighted to be able to announce the birth of Sam, a little jack (male) Poitou donkey born on the 2<sup>nd</sup> July. A very precious little foal who will contribute to the conservation effort to protect these gentle giants!<sup>6</sup>







Barbara Wolstenholme from **Caradon Orchard Group (COG)** has been in touch with the Parish Pump asking us to help spread the word about this interesting group. Barbara is keen for people to understand that COG "is not some exclusive group of orchard owners but open to all. Members can attend grafting and pruning sessions, an annual visit to RHS Rosemoor and even the AGM is usually 20 minutes of "business" followed by talks from, for

example, bee keepers, cider makers or Cotethele head gardeners, and an opportunity to eat cake!"

Members range from those with just a few fruit trees to some who have planted orchards of up to 100 trees. Some have old and neglected orchards and are keen to get them back into healthy production while others are in the early stages of planting up a field with new trees. Membership is currently drawn from around Caradon Hill, notably Henwood, Rilla Mill, Pensilva, Golberdon, Crow's Nest and Darite, but the group welcomes anyone in Cornwall.



COG is involved with just about everything to do with apples in our area, from researching the history of orchards in Cornwall, to hands-on training in skills such as tree pruning and juicing. Members can also benefit from use of the group's apple processing equipment, which includes a mobile apple press and a steriliser. Future plans include continuing to build community links, for instance with schools, as well as the hosting of "Apple Days" and wassailing events, "so that everyone can celebrate local orchards, fruit, cider, juice and pies." (There must surely be something on that list for everyone!)

Membership costs just £7 per person per year, or £12 for annual joint membership.

Interested? Pick up a leaflet from Millennium House, or contact:

Barbara Wolstenholme, Blackoombe Farm Henwood, PL14 5QN.

Email: [bewolstenholme@gmail.com](mailto:bewolstenholme@gmail.com)

**Ruth and Colleen's Monthly**

**BINGO**

**At Millennium House**

**on Tuesday 7th August**

**Then 4th September**

**Eyes down at 7:30pm**

**Over 18's only**

**£££ CASH PRIZES £££**

**QUIZZES AT MILLENNIUM HOUSE**

**NEXT QUIZ: SATURDAY SEPT. 1ST, 7:30PM**

**Then: October 13th, December 8th**

**All at 7:30pm**

**Organised by and raising funds for**

***All Being Well***

**Improving the health of our community**

*ST JOHN'S* *Presents an afternoon*  
*CHURCH* *of activities on*

*Wednesday*  
*August*  
*8th*

**GAMES**

**ARTS and CRAFTS**

**CREATIVE DANCE**

**ACTIVITIES**

*for children from*  
*Reception to Year 6*  
*in Millennium House*

*Free admission Registration from 1.30 to 2.00 pm*

*Activities from 2.15 to 4.45 pm*

*Children under 5 must be accompanied by an adult at all times*

# Craft and Gift Fair with Coffee and Cake!



Everyone is welcome!

Saturday 18<sup>th</sup> August  
12pm – 4pm

The Function Room,  
Millennium House, Pensilva

Local crafts, stalls, refreshments,  
cakes, sweepstake and guess the  
weight of the chocolate cake!





# PENSILVA WOMEN'S INSTITUTE HORTICULTURAL SHOW

To be held in  
**MILLENNIUM HOUSE, PENSILVA on  
SATURDAY 8<sup>th</sup> SEPTEMBER, 2018.**

To be opened at 2.15pm.

**By Margaret Johnson.**

**Cornwall Federation W.I Chairman.**

Classes for Cookery, photography, cut flowers and flower  
arranging, plants and vegetables, handicrafts and art.

**Schedules available from Jill Pascoe 362819,**

**also from Millennium House.**

**Cream Teas**

**Raffle.**



**Please support your local show.**

**FREE ENTRY**

## **COMMUNITY COFFEE SHOP**

### **in MILLENNIUM HOUSE PENSILVA**

THE COFFEE SHOP IS NOW OPEN AT THE FOLLOWING TIMES:

MONDAYS	10.00am - 1.00pm
TUESDAYS	9.00am - 1.00pm
WEDNESDAYS	9.00am - 1.00pm
THURSDAYS	9.00am - 1.00pm (coffee morning 10-12)
FRIDAYS	9.00am - 1.00pm

## **Pensioners Lunch**

2 Course Meal plus Tea or Coffee

**Only £5.50**

Every Tuesday here at Millennium House  
Speak to our reception or  
telephone Millennium House on **01579 363096**



So why not join us for Good  
Food and Good Company, all on  
the day you collect your  
pension?

## **MOBILE LIBRARY**

The County Mobile Library visits our area once a month on Fridays of "Week 3" (NOTE: not necessarily the 3rd Friday of the month).



Next visits: 3<sup>rd</sup> Aug, 31<sup>st</sup> Aug, 28<sup>th</sup> Sept, 26<sup>th</sup>  
Oct, 23<sup>rd</sup> Nov, 21<sup>st</sup> Dec.

Stops at: The Victoria Inn, Pensilva at  
10.25 to 10.45am;  
Quethiock bus stop. 11.00 to 11.20am.



## **ST IVE SINGING GROUP...**

... is on summer break from June until September 6th.  
You can hear us at the St Ive Show, on Saturday Sept. 1st.

For more info call Clare on 01579 382341

### **PENSILVA WEDNESDAY CLUB R.V.S**

**Meet in Pensilva Village Hall at 2.30.p.m. on alternate  
Wednesdays**

**All Adults welcome to join - £1 per meeting -  
Refreshments - Various activities - Entertainment -  
Coach Trips - Raffle**

**Information: please contact Jane Mann 01579 362960**

## **St Ive Church Produce Market**

Every 1<sup>st</sup> Friday 10:30 to 1:30pm

Homemade Cakes Fresh Vegetables

Jams Pickles Local made Pasties

Bric-a-brac and much more - also

### **Home Reared Traditional Meat**

Pork, Beef, Chicken, Dry Cured Bacon, Sausages from

### **Trehill Farm Produce**

*Cooked Lunch available from 11:30 only £4.50*

## PENSILVA MEMORY CAFE

DO YOU HAVE MEMORY PROBLEMS OR CARE FOR SOMEONE WHO DOES? WHETHER IT'S MILD, MODERATE OR SEVERE YOU CAN SOMETIMES FEEL A BIT ISOLATED AND ALONE.



DON'T BE LONELY. KEEP SMILING. THERE ARE MANY OTHERS LIVING WITH THIS CONDITION.

COME AND JOIN US ONCE A MONTH FOR SOME FUN AND LAUGHTER, MUSIC & REMINISCENCES.

WE MEET ON THE FOURTH THURSDAY OF EACH MONTH AT ST JOHN'S CHURCH FROM 2PM – 4PM.

WE ALSO SUPPLY TEA/COFFEE AND CAKES.

DONATIONS OF £1 PER PERSON APPRECIATED FOR MORE INFO PHONE PAT 01579 363461 OR CAROLYN 01579 362698

The collection point for the

**foodbank**

is now open every day from  
10am to 4pm

in<sup>24</sup> St John's Church, Pensilva.



# PENSILVA GROUP MEETINGS NOW AT 5:30pm AS WELL AS 7:30pm

be inspired  
with  
**Slimming  
World**



**MONDAY PENSILVA 5:30 and 7:30 pm**  
The Millennium Centre, Princess Road,  
Pensilva, Liskeard PL14 5NF.  
Tel: Hayley **07966 370233**

**TUESDAY LISKEARD**  
**9:30am, 11:30am, 5:30pm or 7:30pm**  
Lower Hall, Church St., Liskeard  
PL14 3AQ. Tel: Vicki **07973 402829**

**WEDNESDAY LISKEARD 9:30am**  
Liskeard & District Sports Association,  
Lux Park Coldstyle Road Liskeard  
PL14 3HZ. Tel: Sammy **07807 289801**

**THURSDAY DOBWALLS 5:30 or 7:30pm**  
Dobwalls Football Club Dobwalls Liskeard  
PL14 4LU. Tel: Sammy **07807 289801**

**FRIDAY GOLBERDON 9:30am**  
Golberdon Village Hall Nr Callington  
PL17 7ND. Tel: Jane **07769 734316**

    
[slimmingworld.co.uk](http://slimmingworld.co.uk)



# ***Badminton?***

Come and join our relaxed and friendly group at Pensilva Millennium House

**Mon & Tue 7.30 - 9.30pm**

**Friday 8.00 - 10.00pm**

**For further info phone**

**Nigel or Carol on**

**01579 363594 or**

**07885 798370**

# ***All Being Well***

Your local, friendly gym.

Over 18 years working in our local community to improve health, fitness and well being.

Call **01579 363890**, drop in at Millennium House, Pensilva, or email [abwgym@gmail.com](mailto:abwgym@gmail.com)

## Opening hours:

Mon/Fri 10am-3pm & 5pm-9pm

Wed 10am to 3pm

Tues/Thur 9am to 1pm

Saturday 10am to 1pm

**Ask about GP exercise referrals!**

# ***PENMILL ART GROUP***

We are a small, friendly group using all art mediums. If you paint we would love you to join us.

We meet at

Millennium House

**10-2 every Monday.**

Please come & see us or phone Pam on

**01579 363441.**

# **LISKERRET MALE VOICE CHOIR**

We are currently looking for new members in all sections. No previous experience necessary.

Practice Mondays 7:30pm at the Royal British Legion, Liskeard.

Enquiries to the secretary on

**01579 363881**

Email: [charaton@btinternet.com](mailto:charaton@btinternet.com)

Website: [www.liskerretmvc.org](http://www.liskerretmvc.org)

Charity No. 1120243

## **PENSILVA VILLAGE HALL**

Anyone wishing to book the hall for meetings, birthday parties or fundraisers please contact Peter or Jackie Browning on **01579 363212** or email **[peter@pensilva.freeserve.co.uk](mailto:peter@pensilva.freeserve.co.uk)**.



Please note that as well as hall rent there is a coin meter for heating at 40p/hr.

We hold a Hall users and committee meeting on the fourth Monday of each month at 7.00pm. Please feel free to come along and support us.

### **Organisations that meet in Pensilva Village Hall**

<b>Meeting Times</b>	<b>Organisation</b>	<b>Contact Person</b>	<b>Telephone</b>
Mon. 4:00 - 6:00	Brownies	Mrs Martha Oliver	01579 362239
Alternate Wed. 2:30 - 4:00	Wednesday Club	Mrs Jean Conner	01579 363221
Wed. 7:00 & various	Snooker Club	Mr Philip Bond	01579 362091
Thu. 6:00 - 8:00	Guides	Miss Caroline Hambly	01579 363228
Fri. 1:00 - 3:00	MIMS	Chris	01579 343702
Fri. 4:00 - 5:00	Rainbows	Mrs Lynne Bond	01579 362091

### **St Ive Institute & Village Hall**

Every Wednesday	10:30am to 12 noon 10:30am to 11:30am	Coffee morning Travelling Post Office
First Monday	7:30pm	St Ive Gardening Club
Every Monday & Thursday	7:00pm	St Ive Snooker Club

**NHS  
REGISTERED**



**SUPPORTED BY  
LOCAL DOCTORS**

## **Do you suffer with various long term health conditions?**

Come along and join our small, friendly group.  
For company, light exercise and support.

Upstairs in Millennium House every Monday from 12.30pm - 2.30pm

For more information contact us:

Pauline **01579 345989**

Jeanette **01579 363691** The **co-operative**  
Community Fund



## **DO YOU NEED A HELPING HAND?**

Reliable, friendly,  
experienced, mature  
local resident offering  
the following services:



**Cleaning Ironing**

**Shopping Light Gardening Dog Walking**

CRB/DBS checked and fully insured. Competitive rates.

**Contact Jess:** Telephone or text: 07934 764 327.



Email: [homeangel77@yahoo.com](mailto:homeangel77@yahoo.com). Find us on Facebook



**PENSILVA HEALTH CENTRE - PATIENT PARTICIPATION GROUP**  
We are a group of patients who meet regularly with the Health Centre to bring forward for discussion ideas, comments and suggestions about your surgery. In the past we have held open days, helped at the flu clinics and participated in a trial Peoples Commissioning Board Project.

We also organise a Carer's and bereavement group (see below) and a 'Walking for Health' group

**(Contact Ivor Vaughan 07979 934604 ).**

You can contact us directly or through the Health Centre.

## **PENSILVA HEALTH CENTRE CARERS AND BEREAVEMENT GROUP**

**Are you a carer, bereaved or lonely? Then come along and join our Group. Tea, Coffee and plenty of friendly chat and, when possible, local trips to various venues.**

**Meetings are held every third Thursday of each month at 11.30.a.m.  
Meet in Millennium House car park.**

**For any information please contact Jean Connor 01579 363221**



## **Struggling with Sight Loss?**

iSight Cornwall offers practical help to people living with sight loss in Cornwall including:

Low Vision: Advice for low vision aids

Assistive Technology: Advice on products

Benefits Advice: Assistance to claim entitlements

Equipment Demonstration: Advice on gadgets

Social Clubs & Activities: Links to clubs & activities in the county

For more details Telephone 01872 261110 or visit

[www.isightcornwall.org.uk](http://www.isightcornwall.org.uk)

# St Ive Methodist Chapel

## *Services for August 2018*

<b>Sun 5th Aug</b>	11am	Rev Iris Bray with Communion
	6pm	Rural Churches Worship at Blunts M.C.
<b>Sun 12th Aug</b>	11am	Mr Keith Mutton
<b>Sun 19th Aug</b>	11 am	Mr Noel Morgan
<b>Sun 26th Aug</b>	11 am	Mr Alan Libby

For regular updates on services etc at the Chapel, as well as around the area, look at the St Ive Methodist Church Facebook page.

The Chattermakers craft group will meet on Thursday 2nd, 16th and 30th August in the Guild room from 7:30pm. This is a group open to anyone that likes to do any craft and would like to share with others of a like mind (hence the 'Chatter' bit!!) More details from Kathryn on 01579 382334. All welcome.

The Village Church Prayer meeting will also be held at St Ive Chapel on Thursday 2nd, 16th and 30th August from 7:30pm. **All welcome**

## Trerosa Studios

**Pottery & Woodturning activities for you to enjoy**

**Well equipped**

**All materials provided**

**Help / tuition from qualified teacher if required**

**01579 647247 or 07486 089466**

**Email: [bob@trerosacrafts.co.uk](mailto:bob@trerosacrafts.co.uk) [www.trerosacrafts.co.uk](http://www.trerosacrafts.co.uk)**

**High quality professional tools**

**Small friendly atmosphere**

# St Ive Church

Services at 11:15am Every Sunday

- Aug 5th            Holy Communion  
Aug 12th          Family Service. Small pets welcome  
Aug 19th          Holy Communion. Lunch follows this service  
Aug 26th          Morning Worship

.....  
Other August Events

- Fri 6th            **Produce Market and Bric-a-brac**  
Home made cakes etc, fresh vegetables, locally made pasties, pickles, jams and much more. Farm fresh meat from Trehill Farm Produce.
- Cream Teas in Church. Sun 5th and every Sunday till September. 2 - 5pm**  
Delicious homemade scones and cakes.
- Sun 19th          **Lunch in Church 12:45pm.** All welcome. 2 course lunch only £7.

Reverend Margot Davies                      **01579 208698** email [margotaj@tiscali.co.uk](mailto:margotaj@tiscali.co.uk)

Church Wardens            Brian Dwelly            **01579 364010** [btdwelly@aol.com](mailto:btdwelly@aol.com)  
                                         Colin Catchpole    **01579 383867** [ccatchpole@hotmail.com](mailto:ccatchpole@hotmail.com)

Donations for Liskeard Food Bank can be left in the Church each day between 10am & 4pm

## **Alford Joinery - For all your joinery needs** Specialists in bespoke doors, windows, staircases, conservatories, etc.

- 20 years experience
- Large or small jobs                      **01208 873444 or 07757 666460**
- All joinery hand-crafted                      **[info@alfordjoinery.com](mailto:info@alfordjoinery.com)**
- Top quality FSC certified timbers                      **[www.alfordjoinery.com](http://www.alfordjoinery.com)**
- All joinery can be fitted if required.

# ST JOHN'S CHURCH, PENSILVA

## Services for August 2018

*Anglicans and Methodists share services at 11 am each Sunday, coffee served before service*

Sunday 5th	(10am	Anglican Benefice Eucharist at St Cleer)
	11 am	Mrs Jill Ware
Sunday 12th	11 am	Café Church
Sunday 19th	11 am	Anglican Holy Communion
Sunday 26th	11 am	Rev. Sue Hill
	5 pm	<b>Food for Thought</b> at St John's Church

**Café Style Church** followed by coffee and chat, Thursday mornings, 10am, everyone very welcome.

**Afternoon Tea**, Friday 3rd August, 3pm at St John's. Cup of tea and a chat. Everyone welcome to join us.

Children's Activity Afternoon. Wednesday 8th August. Registration from 1:30-2 at Millennium House. A afternoon of Creative Dance, Art, Craft and Games for children of Primary School age.

**Fellowship Group** No meetings in August.

**Prayer Group:** 2pm Fri. 10th & 24th August. Please ring Eileen on 362580 or Carolyn 362698 if you would like prayer for yourself or someone else.

*For further details of the Services held in St John's, if you know of any illness or need in the village or if you would like your wedding or baptism in the church, please contact:*

*Geoff Cox - 362698 or Frances Tucker - 363718*

## Received from Carolyn Cox.

Local families may like to know that there are free or very low cost lunches available every Friday from 12 noon in the hall at Liskeard Methodist Church, with activities for the children beforehand.



# **ADVERTISE**

# **HERE!**

This box for **just £25 per month** including VAT.

**10% discount** for a 12 month order.

i.e. **£18.75 + VAT** per month for 12 months

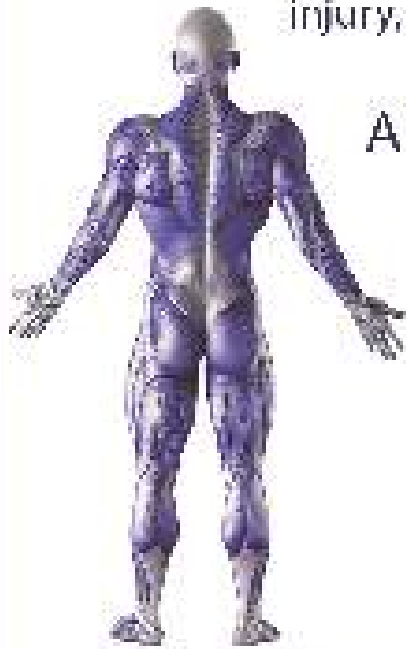
See the full tariff on page 3

One thousand copies per month  
distributed free of charge to  
households in the Parish of St Ive.

## QUALIFIED RAYNOR MASSAGE THERAPIST

RELAXING AND THERAPEUTIC DEEP TISSUE MASSAGE TREATMENTS

Effective for many different types of chronic pain, sports injury, stress and tension related problems



APPOINTMENTS AVAILABLE AT

THE WELLBEING CENTRE  
LISKEARD 01579 344090

THE NATURAL WAY  
LISKEARD 01579 345300

Contact : Tina North  
Phone : 07720 832322

[tina-north@massage-therapy-cornwall.co.uk](mailto:tina-north@massage-therapy-cornwall.co.uk)



## R J Gardening & Handyman Services

All aspects of gardening and handyman work undertaken.

- ~Local and Trustworthy
- ~Hard Working
- ~Reliable and Experienced
- ~No job too small
- ~Competitive rates

Contact Raymond on:

07541 229064 or 01579 347622

[raymond\\_pearcegb@yahoo.com](mailto:raymond_pearcegb@yahoo.com)

Find us on Facebook.





# R&C



## Groundworks and Landscapes

Fencing	Patios
Paths & Steps	
Turf & Astro turf	
Driveways	Rendering
Retaining walls	Decking
Digger work	
Footings & foundations	

**And more**

Free no obligation quotes

**Call Rob on:**

**07518246666 or  
01579 641802**

# Window Cleaner Window Cleaner

Also any upvc cleaned

i.e. fascias, gutters, etc.

gutters cleared & unblocked

Please phone Rob

**07709 053464**

# Window Cleaner Window Cleaner

Save Costly Energy!



## SOLARTEC

Windows &  
Conservatories Ltd

**'A' Rated WINDOWS & DOORS  
at BEST PRICES EVER!**



Professionally fitted and finished by us with a



10 year ins. guarantee.

In all colours



**NEW**

**FACTORY SHOP  
SUPPLY ONLY**

For all your windows, doors, conservatories,  
fascia, trims, guttering and sealants

**7-10 DAY TURN AROUND ON WINDOWS,  
DOORS and CONSERVATORIES**

**TEL: 01579 343425**

**FAX: 01579 344500**

WEBSITE: [www.solartecwindows.co.uk](http://www.solartecwindows.co.uk)

EMAIL: [sales@solartecwindows.co.uk](mailto:sales@solartecwindows.co.uk)

**KEEPING JOBS IN CORNWALL**

*PJR Garden Services*

**Phil Rule**

All aspects of garden  
work - grass / hedge  
cutting, patios, fencing  
etc.

**Mobile 07387 449004**



**Tom Marshall**

**TM Plastering**

Plasterer and Property Care

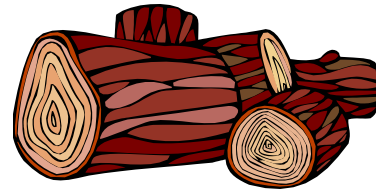
**07544819284**

Tommarshallcornwall@gmail.com

**Free estimates**

- Internal plastering
- Internal / external rendering
- Damp proofing
- Stud Walls
- Patio laying
- Chimney repairs
- Pointing
- Painting

**SEASONED LOGS**



**MIXED LOAD**  
or  
**HARDWOOD**

Tel Jonathan

Mobile 07966 070725

or  
01579 363157

Also tree/hedge work  
undertaken

## **DAVID HEWETT GARDEN SERVICES**

**For all aspects of garden care:**

**lawn mowing, grass cutting,**

**strimming, hedge cutting,**

**clearance, and more.**

**01579 363796**

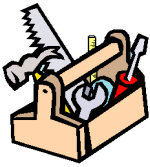
**25 years experience.**

**Fully insured.**



# KEEP IT TIDY

General Property Maintenance  
including Decorating, plus Electrical



**HONEST PRICE**  
for  
**QUALITY WORK.**



**No Job Too Small**

**Kit Rickard**

18 Higher Glen Park  
Pensilva

**Phone:** 01579 363378

**Mobile:** 07855 699071

**Email:** [KITKeepItTidy@hotmail.com](mailto:KITKeepItTidy@hotmail.com)

# Chiropodist

Fully qualified, experienced and  
insured Chiropodist/Podiatrist

- Nail cutting, corns/callus,  
diabetic foot care etc
- Personal home visits, groups  
and residential homes

**Contact Clare:**  
**07757973709**



# DOG GROOMING

**40 YEARS EXPERIENCE**



**SMALL and MEDIUM Dogs**  
**Groomed to Your Request**

**LISKEARD AREA**  
**Inquiries Welcome**

**Call Patricia: 07517 658862**  
**TO YOU OR TO ME**



Domestic Electrical  
Property Maintenance  
Interior & Exterior Work  
Carpentry :: Decking  
Kitchens :: Bathrooms  
Wall & Floor Tiling  
General Plumbing

**MCCARTHY PROPERTY MAINTENANCE**

**Electrical Safety**  
**Register** incorporating  
ELECSA  ECA  
Certification Ltd

**HIGHLY REGARDED LOCAL BUILDER**  
**COMPETITIVELY PRICED**  
**COVERING THE SOUTH WEST**

Contact Dominic

07968 599 675

01579 362 945

[info@mccarthypropertymaintenance.co.uk](mailto:info@mccarthypropertymaintenance.co.uk)

[www.mccarthypropertymaintenance.co.uk](http://www.mccarthypropertymaintenance.co.uk)

Alphaplas Limited t/a  
**Trims&Windows**

[www.trimsandwindows.co.uk](http://www.trimsandwindows.co.uk)

**Double Glazed uPVC**  
**Windows-Doors-Conservatories**  
'Conservation' vertical sliders a speciality



Supply only to Trade & DIY or  
Full installation registered with

**FENSA inc**  
10yr insurance backed guarantee



Email: [alphaplas@btconnect.com](mailto:alphaplas@btconnect.com)

**01752 840078**

Installation team based in  
Pensilva, Looe & Torpoint

# Owna

Mobile Device and PC repair

07766013897

alex@owna.co.uk



For repair of mashed mobiles, trashed tablets, or poorly PC's visit [www.owna.co.uk](http://www.owna.co.uk) or call Alex for a free quote, no fix no fee

## MARK FITCH CHIMNEY SWEEP

- \* BRUSH & VACUUM
- \* CLEAN, RELIABLE SERVICE
- \* COVERING ALL S.E. CORNWALL
- \* DISCOUNT FOR MULTIPLE CHIMNEYS
- \* COWLS & GUARDS FITTED
- \* STOVES SERVICED



*Call  
Mark on:*

01579 350762  
07773 462643







## Affordable Counselling

**Caring, confidential,  
non-judgemental**

- Increased confidence and self esteem
- Help to cope better at difficult times
- Improved relationships
- Clarify confused thoughts & feelings
- Assertiveness
- Personal insight
- Improved emotional health
- Available for youth and adults

**Isabelle McGarahan BA, PGCE  
Dip in Therapeutic Counselling,  
Member of ACC, DBS cleared**  
[www.im-counselling.org](http://www.im-counselling.org) email:  
[isabelle@im-counselling.org](mailto:isabelle@im-counselling.org)  
**01579 344090/07857326229**



Steve West



## Aerial Services

Installations / Repairs to  
TV Aerials, Satellite Dishes  
and Radio

Customised to your requirements

Wireless network &  
Mobile phone extensions

TV mounting on walls  
Help setting up systems  
and demonstrating.

Phone 01726 212761

Mobile 07941 606 183

e-mail [stevewestaerials@uwclub.net](mailto:stevewestaerials@uwclub.net)

## PENROSS

Rosecraddoc Lodge Holiday Bungalows  
(Between Pensilva & Liskeard)



Ideal for visiting family and friends !  
Refurbished in 2018. Sleeps 4. Electric,  
heating, bedding and towels inc in rent.  
Patio. Free wi-fi. Follow us on Facebook.

Sorry no pets and no smoking.  
Contact Julie Tucker 01579 362221 or  
[penhargetfarm@gmail.com](mailto:penhargetfarm@gmail.com)  
for 15% discount

## NICOLA GREENE

BSc (hons) Podiatry MChs

HPC Registered Chiropodist/Podiatrist

**Home Visit Practice treating all  
your foot care needs:**

- Nail Cutting
- Corns and Calluses
- Thickened Nails
- Dry Cracked Skin
- Verrucae
- Foot Pain
- Diabetic Foot Assessments
- Wound Care

T: 01579 590027

T: 01752 291565

M: 07786164205

E: [nicki\\_greene@yahoo.com](mailto:nicki_greene@yahoo.com)



# Group Travel

Enterprise Park, Midway Road, Bodmin  
Cornwall PL31 2FQ. Tel: 01208 77989



**BODMIN M.O.T. CENTRE at Group Travel**

Class 4, 5 and 7. Trade enquiries available upon request. Tel: 01208 77989

## 2018 COACH EXCURSIONS

11<sup>th</sup> SEP - WIDECOMBE FAIR  
15<sup>th</sup> SEP - TOBY'S HARVEST FESTIVAL  
27<sup>th</sup> - 1<sup>st</sup> OCT - SHROPSHIRE BY COACH, RAIL & CANAL  
3<sup>rd</sup> NOV - BRIDGWATER CARNIVAL  
17<sup>th</sup> NOV - FESTIVAL OF LIGHT @ LONGLEAT  
23<sup>rd</sup> - 26<sup>th</sup> NOV - TURKEY & TINSEL @ BOURNEMOUTH

24<sup>th</sup> NOV - CLARKS SHOPPING VILLAGE, STREET  
8<sup>th</sup> DEC - BATH CHRISTMAS MARKET  
16<sup>th</sup> DEC - MOUSEHOLE & ANGARRACK LIGHTS  
2019  
26<sup>th</sup> APR- 1<sup>st</sup> MAY - ISLE OF MAN SPRING TOUR

16 TO 70 SEAT COACHES AVAILABLE FOR PRIVATE HIRE. CORPORATE/ VIP, EVENTS & CONFERENCES, WEDDINGS (CAN INCLUDE STAG & HEN PARTY PACKAGE), HOLIDAY TRANSFERS, FUNERALS, DAYS OUT, GROUP TOURS, GOLFING HOLIDAYS & SPORTING EVENTS.

FOR BOOKINGS AND A BROCHURE PLEASE CALL

**01208 77989 / 01208 72669**

Website: [grouptravelcoachhire.com](http://grouptravelcoachhire.com) Email: [benneymoon@btinternet.com](mailto:benneymoon@btinternet.com)

## Martin Hoare – Local, Reliable, Competitive



WHEEL DIGGER FOR HIRE  
ALSO AVAILABE 'BREAKER'  
AND NEW CONCRETE  
'CRUSHER BUCKET'

ALL AT COMPETITIVE RATES

GROUND WORKS  
DRAINAGE  
NEW DRIVEWAYS  
SEPTIC TANKS &  
'SOAK AWAYS' INSTALLED



LASER LEVEL FOR HIRE  
QUOTES AVAILABLE



Phone 01579 363517

or

Mob 07863 291213



INDEPENDENT  
FAMILY  
FUNERAL  
DIRECTORS



Undertaking your individual  
needs with efficiency,  
compassion and care...

Perfect Choice Prepayment  
Funeral Plans from £3249.00

(Prices correct as at 01.01.2013)

01579 362358



Avalennek, Caradon Town,  
Upton Cross, Liskeard  
Cornwall PL14 5AR  
Telephone 01579 363598  
Mobile 07901 538132  
[chrisrounsevell@tiscali.co.uk](mailto:chrisrounsevell@tiscali.co.uk)

## HOG ROAST EQUIPMENT HIRE AND MEAT SUPPLY

Hog Roasts For Those Special Occasions  
Self Catering or Hassle Free Service  
Everything done to your special requirements

**CHRIS ROUNSEVELL**  
TRADITIONAL BUTCHER



## Local Accountant offering fixed fee accounting services

With over 20 years experience, I am a fully qualified, friendly, local accountant

- ✓ Annual Accounts for Sole Traders and Partnerships
- ✓ Book Keeping & Payroll
- ✓ Personal Tax Planning
- ✓ Company Accounts
- ✓ Business Support & Advice

- ✓ Self Assessment tax returns
- ✓ iXBRL tax filing
- ✓ Tax investigation Fees Insurance
- ✓ Company Secretarial work
- ✓ Tax calculations for Sole Traders and Partnerships

Kate Vaughnley FCCA - Chartered Certified Accountant

Website : [www.kvaccountingsolutions.co.uk](http://www.kvaccountingsolutions.co.uk) or Email : [katevaughnley@gmail.com](mailto:katevaughnley@gmail.com)  
Telephone : 01579 364083



## GRAB LORRY HIRE

PLANT HIRE & GROUNDWORKS

07970 270218 | 01579 344402

**MORE COST-EFFECTIVE THAN SKIPS  
FOR SOIL, RUBBLE & GREEN WASTE  
REMOVAL!**

CAN REACH OVER WALLS &  
FENCES FOR COLLECTION  
FROM INACCESSIBLE AREAS

SKIP BAGS AVAILABLE FOR  
SMALL JOBS





**OPEN FOR RETAIL, TRADE & COMMERCIAL ENQUIRIES**

# CORNWALL TILE CENTRE

[www.cornwalltile.com](http://www.cornwalltile.com)

tileitalia

The Natural  
TILE & STONE COMPANY

BESPOKE  
TILE IMPORTS



Tiles & Stone for:

- ◆ Bathrooms & Kitchens
- ◆ Living Areas
- ◆ Conservatories
- ◆ Patios & External Areas
- ◆ Wet Rooms & Spas
- ◆ Swimming Pools
- ◆ All Commercial Applications

- ◆ Local & National Delivery Service
- ◆ Sample Loan Service
- ◆ Free Quotations
- ◆ Free Design Ideas & Planning Advice
- ◆ Trade Enquiries Welcome
- ◆ Wet Room Specialist
- ◆ Full Range of Adhesives & Grouts

## Pensilva Showroom

Open Mon - Thurs 8.30am - 5pm  
Friday 8.30am - 3pm  
Saturday 9.00am - 1pm

## Wadebridge Showroom

Open Mon - Fri 9am - 5pm  
Sat 10am - 3pm



**01579  
362264**

**DISCOUNT TO ALL PUMP READERS**





*The*  
**RACEHORSE  
INN**



*Gastro Pub*

---

**Head Chef Phillip Bradshaw**

---

Ray and Flori welcome you to  
the Racehorse INN

A fine food experience in a convivial  
atmosphere

Our superb Sunday lunch is one to be tried

Open Every Day for Lunch and Dinner

[info@racehorseinn.co.uk](mailto:info@racehorseinn.co.uk)  
[www.racehorseinn.co.uk](http://www.racehorseinn.co.uk)

Take-out: Pizzas & Fish'n'Chips now available



**North Hill Village, Cornwall, PL15 7PG**

**01566 786 916**

## J. H. Simmons

Painting & Decorating



**No Job Too Small**

For more information  
Please call John  
01579 362688

7 East Park, Pensilva

## D.J.A. BUILDING SERVICES

ALL ASPECTS OF PROPERTY  
MAINTENANCE BUILDING &  
REFURBISHMENT

- \* Bespoke Furniture and Kitchens
- \* Wardrobes and Bookcases
- \* Garden Sheds, Poultry Houses & Small Animal Shelters
- \* Over 30 years' experience
- \* Fully insured
- \* References available
- \* Free estimates
- \* No VAT

**Call David on 01579  
364050 / 07767662635**

# Westwood Garden Maintenance



*Antony Watts*

*Grass Cutting, Clearance*

*Weeding, Turfing*

*Hedge Cutting*

*Patio Cleaning, Planting*

*Regular Visits / One-off Contracts*

*Residential & Commercial*

**FREE ESTIMATES**

01579 362019 [www.westwoodgm.co.uk](http://www.westwoodgm.co.uk) 07952 094472





**THE HOME OF WOOD**



**OPEN TO THE TRADE & PUBLIC  
FOR ALL YOUR HOME AND GARDEN NEEDS**

**DECKING • FENCE PANELS • OAK FLOORING • STRUCTURAL TIMBER  
GARDEN FURNITURE • GATES • DOORS • CEDAR CLADDING**

**TELEPHONE 01503 240308**

**EMAIL: STACY@WHBOND.CO.UK**

---

**WWW.BONDTIMBER.CO.UK**

**TRERULEFOOT • SALTASH • PL12 5BW**

# Pensilva Stores

## Amazing Value

**Premier**  
a great deal more from your local store  
**Mon-Sat. 7:00 AM. – 9:30 PM.**  
**Sunday 8:00 AM. – 9:30 PM.**

- ✓ Fantastic Special Offers every month!!! (See store leaflets)
- ✓ Come and Check out our great deals on Wine, Beer and Spirits
- ✓ Local Produce: Homemade Butter and Clotted Cream, Meat from our local butcher
- ✓ Cornish Fresh Fruit and Vegetables
- ✓ Fresh Bread, Pasties and Cakes
- ✓ Take Away Coffee, tea and hot chocolate
- ✓ Newspapers and Magazines, Greeting Cards
- ✓ Paypoint, Lottery

**\* Free to use ATM \***  
**\* Card Payment \***

*Friendly Staff + Service with a Smile !!!*

**Pensilva Stores is a family run business who have been serving local people and visitors for more than 21 years.**

Higher Road, Pensilva, Liskeard, Cornwall PL14 5NQ

Tel: 01579 362547

# MENDOLOGY

## Garage Door Specialist

- Repairs
- Servicing
- Installations

Out of hours service  
call Dave anytime 07974 442645

**MENDOLOGY** COMMERCIAL DOORS LTD


[www.mendologydoors.co.uk](http://www.mendologydoors.co.uk)

**01579 363760**



# PensilvaCars

01579 363516

- ✓ MOTs Class 4
- ✓ Service
- ✓ Repair
- ✓ Tyres
- ✓ FREE Courtesy Car
- ✓ Car & Van Sales
- ✓ Diagnostics
- ✓ Air Conditioning
- ✓ 

**We have offered a supply, fit & balance of tyre service for 10 years at competitive prices.**

**Most of our tyres can be supplied the same day.**

**LOCAL RECOVERY £45.00**

**[www.pensilvacars.co.uk](http://www.pensilvacars.co.uk)**

**[pensilvacars@hotmail.co.uk](mailto:pensilvacars@hotmail.co.uk)**

We can service and repair your car to manufacturer specification, keeping your dealer warranty without main dealer expense.





# KEITH RICHARDS

## Motor Body Repair Specialists

A family run business with fully equipped & maintained workshops & a focus on  
Customer Care

- ◇ Motor Body Repair Specialist
- ◇ Mechanical Repairs
- ◇ Servicing to All Makes & Models
- ◇ Computer 4 Wheel Alignment
- ◇ 24 Hour Recovery Service
- ◇ Renovations & Re-sprays
- ◇ Member of RMI (Retail Motor Industry Federation)
- ◇ Latest Diagnostics (including specialists for VW, Audi, Seat, Skoda & Vauxhall)

With over 30 years' experience we aim to provide you with:- Value for Money -  
Friendly Service - Professional Approach - Expert Advice that you Can Trust  
(Visit our website for more details)

Pensilva Industrial Estate, St Ive Road, Pensilva, Liskeard, Cornwall PL14 5RE

Tel: 01579 362593

Email: [keith@keithrichardsmotorbody.co.uk](mailto:keith@keithrichardsmotorbody.co.uk)

Fax: 01579 363194

Website: [www.keithrichardsmotorbody.co.uk](http://www.keithrichardsmotorbody.co.uk)

Wm. Newham & Sons Est. 1835

Proprietor Robbie Savill AWCB

## CHIMNEY SWEEPS & BLACKSMITHS



CHIMNEY SWEEPING

BIRD GUARDS, COWLS & POTS FITTED

CCTV INSPECTIONS & SURVEYS

STACK REPAIRS & REBUILDS

RIGID STEEL SYSTEMS ERECTED

STAINLESS STEEL and PUMPED CONCRETE  
CHIMNEY LINING

STOVES SUPPLIED, INSTALLED & REPAIRED

FIREPLACE ALTERATIONS & RENOVATIONS

FULL RANGE OF FIREPLACE FURNITURE  
made to order

**01579 347777**

need somewhere to stay ?  
between homes ?  
family/friends visiting ?

Cutkive Wood  
  
Holiday Lodges

ideal for Pensilva  
& St.Ive

please call Jackie on  
01579 362216

# J.J.CHILD

## PLUMBING AND HEATING ENGINEER

### OIL AND GAS APPLIANCE SERVICE , REPAIR AND BREAKDOWNS

### LANDLORD'S CERTIFICATES

OVER 25 YEARS EXPERIENCE  
CALL JOHN ON 01579 362336  
MOBILE 07837921086



502322



# Bargain Corner Free Ads up to £50

Ads are free for items up to £50. £5 charge for items over £50. Please ring the Parish Office on **01579 363096** or leave a note at Millennium House reception or email **parishpump@btconnect.com**.

**\*\*\*Please let us know when your item has sold\*\*\***

Electric **sewing machine**, sews well, ideal for beginners **£30 ono**.

Electric **clothes dryer** (Dry Buddie).

Brand new, never used. **£30**.

**07980 284002**

Black and Decker GX530 30cm electric rotary **Lawn Mower**. Working order. **£15**.

**01579 364016**

Old Metal **School Locker** with six compartments, 6' tall x 3' wide x 1'6" deep. Ideal for all sorts of storage uses. **£45**.

**Fire Fighting Hose**, to BS 3169 1986 standard 100ft long with a 1" internal bore with a wall mountable reel all in good condition ideal for all sorts of uses, market gardening, building sites etc. **£50 ono**.

Set of 3 solid galvanised watering cans for use or as garden ornaments **£20 ono**.

Wooden **Sewing Box** in Good Condition with five slid out compartments. **£15 ono**

**01579 384658**

**AURA 3 Tent**, colour Green; only used for 8 nights camping. Bought for £179.99 but offering it now for **£100** as I have had to give up camping.

Also the **matching Porch Extension** - BRAND NEW, never unpacked since buying for £99.99, but now for sale at **£50**. Real bargains. If you're interested in both, please make me a reasonable offer as I can no longer make use of them. **01579 362574** (Pensilva)  
Please note corrected telephone number

**WANTED. Chicken coop** in reasonable condition. Large enough for three hens.

**01579 363833**

**Baby carrier** back pack - Bush Baby Lite. Excellent condition. **£40. 01579 363525**.

**4 frame** honey extractor (plastic). Good order. **£45**.

**Carpet shampooer** **£6**

**Dyson hoover** **£5**

**01579 320401**.

Child's garden metal **swing** & accessories. **£15. 01579 362085**

Wood-framed **mirror** 2'6" x 3'7". **£10**.

**01579 363812**

**Car Ramp** 6' long. Folds in half. Unused. Good for loading mobility cars. **£49**.

**01579 384222 or 07828 016665**.

**Mobility Walker** Hardly used. Cost about £80 new from Argos. Will sell for **£40**

18 **Demijohns** **£1 each. 01579 362001**

**TOSHIBA Regza 32" TV**. Digital, HD ready 1080p, 3xHDMI, 2 x Scart. Freeview Ready. Full Instructions & remote controller. **£50. 01579 362607**

**GRACO TRAVEL COT** in very good condition, Multi coloured base, (blue, red, yellow and green squares). **£10**

**01579 382772**

**Lec Fridge**. Excellent working order. **£50**  
Can deliver Pensilva area. **01579 363791**

**Sony Home Cinema System** CD/DVD/ Tuner/Amplifier with 5 small wired speakers, sub-woofer and remote control. **£50. 07841 717913**.



Four wheel disability walker with seat and brakes. **£35.**

Three wheel disability walker with bag and brakes. **£30.** **01579 362417**

Dremel Moto Saw. As new condition **scroll saw/fret saw.** Ideal for hobbyists. Own, plastic carry case but is missing vacuum cleaner adapter & instruction booklet. Instructions available on line. **£40.** **01579 362207** (Pensilva)

Superdry clothing **2 windcheaters**, black with fleece lining. excellent condition **£20 each** ono **2 hoodies**, 1 purple, 1 navy, good condition **£15** each or ono  
Black sherpa lined **windcheater**, excellent condition **£30** ono  
All sizes XS & S  
Jack Wills **wool sweater** size 8 and Johnnie B red Sherpa lined hoodie age 11-12 **£10** each ono  
Photos can be emailed. **07724 111132**

Berry's **sideboard.** Circa 1960s. 171cm high x 44.5cm deep x 78cm high. 2 cupboards with one reversible door. 4 drawers, one felt cutlery drawer. **£50** ono. Unusual iridescent paper **side lamp.** Approx 31" high on small base. **£5.** **Buyer collects. 01579 345783.**

Brand new, never worn, **motor bike helmet**, with visor and inside sun visor, red, grey & white. Size medium. Paid £90, will accept **£30** or nearest offer. **07980 284002**

**Reikie** or **Massage Table** etc. Very good condition. (Fold away). **£35.** Pensilva area. **01579 363192**

Folding **3-wheel walker** with brakes and bag. Ideal mobility aid. Hardly used. **£50.** **01579 363081.**

**Automatic guitar tuner** (quick tune) includes electronic pitchpipe.v.g.c as only used a few times/with box.**£5.**

**Inflatable punch tower**, foot pump included, (160cm h). New still in box. **£5.**

**Ladies motorbike jacket** Rayven, size 12, black/pink, as new. **£50.**

**Men's black leather bike jacket**, 52L, & trousers, 40L, TARCA, vgc. **£50** the set.

**Baby bouncer** for up to 6mths. East coast, light fawn/with white polka dots design material, vgc, **£10.**

**07743 416676** (Minions area)

**Nest of 3 tables** yew wood and glass top. Good condition **£45.**

**3ft Mattress** in clean condition. Ex quality. **£50.**

**3ft Divan** to match mattress. VGC. **£40.**

**3ft Pine headboard** very attractive **£20.**

**01579 343990** or **07553 928333**

Targus Notepac plus classic 16" **laptop case.** **Black £5.**

**Leather black briefcase** 17½" x 12½" x 4". **£10** o.n.o.

Both in good condition. **01579 362846**

**Shires Show jacket.** Black with purple Collar. Only been worn a couple of times. Ex. Con. **£25.**

**01579 343992** or **07810 178802**

**Homedics** Back Massager. Full lumbar or Lower Lumbar only options. Plus variable intensity. Fits any armchair. Can be seen working. Only used twice. Great Xmas present. **£50** ono.

**07973 510693** St Ive.

**WANTED to buy**, a small piece of non-development, flat, accessible **land** within 5 miles of St Ive. Any type of land considered.

**Tel 01579 384658.**

**Please let us know when your item has sold.**

## What's on in St Ive Parish ?

WHAT'S ON	WHEN	CONTACT DETAILS
<b>MILLENNIUM HOUSE</b>		
Aikido	Thursday 7:00pm	
Antique & Collectors Fair	4th Sunday Monthly 10:00 - 4:00	
Badminton Club	Mon & Tues 7:30pm. Fr. 8.00pm	01579 363594 (Carol & Nigel)
Book Exchange	Daily	01579 363096
Breath of Air	Monday 12.30pm - 2.30pm	01579 345989 Pauline
Country Dancing	Alternate Thursdays 8.00 - 10.00pm	01579 382402 Ray Buckingham
Ladies Netball	Friday 09:15 - 10:15am	07985 387472
Pensioners Lunches	Tuesday 12:00 - 2:00pm	01579 363096
Short Mat Bowls	Thursday 7:00pm	01579 208528
Village History Group	Last Monday Monthly 7:30pm	01579 208754 (Angus)
Wildlife Group	Quarterly	01579 362539 ( Hilary)
Woman's Institute	2nd Wed Monthly 7:15pm	01579 363718 (Frances Tucker)
Yoga	Wednesday 7:00pm	01579 344464
Zumba Fitness Classes	Wednesday 7:00 - 8:00pm	01579 363096 (Millennium House)
<b>PENSILVA VILLAGE HALL</b>		
Brownies	Monday 4:00 - 6:00pm	01579 362239 Martha Oliver
Pensilva Wednesday Club	Wednesday 2:30pm	01579 363221 Mrs Jean Conner
Pensilva Snooker Club	Wed 7:00pm + Various times	01579 362091 Phillip Bond
Guides	Thursday 6:00 - 8:00pm	01579 363228 Caroline Hambly
MIMS	Friday 1.00 - 3.00pm	01579 343702 (Chris)
Rainbows	Friday 4:00 - 5:00pm	01579 362091 Lynne Bond
Rangers	For Info	01579 362982 Kirsty Oliver
<b>PENSILVA PRE-SCHOOL</b>		
Pensilva Pre-School	Monday-Fridays 9:00 - 3:15 (session times available)	07890 023924 Mrs Suzanne Kinsman (Manager)
Tiny Tots Toddler group	Friday 9:15 - 11:15am	07890 023924 Mrs Suzanne Kinsman (Manager)

## ST IVE INSTITUTE

Gardening Club	1st Monday monthly 7:30pm	01579 382762
St Ive Snooker Club	Monday & Thursday 7:00pm	01579 382315 R Bunkum
Art & Craft Group	Tuesday 1:00 - 5:00pm	01579 362216 (Jackie)
Post Office	Wednesday 10:30 - 11:30	
Coffee Morning	Wednesday 10:30 - 12:00	
St. Ive Singing Group	Thursday 4.00 - 5:30pm	01579 382341 (Clare)

**St Ive Institute available for hire, £3.50 per hour.** This includes the use of the kitchen & electric (excluding wall heaters, which are on a £1 coin meter)

**Contact Sue Sedgewick on 01579 383291**

Hall meetings will now be held quarterly on the second Tuesday of the month in January, April (includes AGM), July and October.

## ST IVE & DISTRICT GARDENING ASSOCIATION

**Meetings in St Ive Village Hall 1st Monday in the month at 7.30pm**

**Mon Aug 6** A visit to **Troutbeck plants and nursery**, Troutbeck Farm, St Ive, PL14 3ND Assemble in St Ive car park to leave at 7.15pm

**Sat 1<sup>st</sup> Sep** **St Ive Village Show** with classes for your fruit, veg & flowers.

**Mon 3<sup>rd</sup> Sep** A talk on **Nerines**, Caroline Stone

*Visitors and new members are always welcome to join us.*

## ART AND CRAFT GROUP

We are a small friendly informal group who enjoy doing art and craft. If you paint or do any type of craftwork and would like to join us we'd love to welcome you.

There is no 'teaching' but help/advice is always forthcoming!

We meet at St. Ive Institute Hall from 1.00pm to 5.00pm Tuesday afternoons.

Only £3.00 for the afternoon plus 50p for tea/coffee and biccies.

If you are interested please give Jackie a call on **01579 362216**.

We look forward to meeting you.



# Pensilva Post Office

Located through the Café on the 1<sup>st</sup> floor of Millennium House



## Opening times:

Tuesday	-	9am to 1pm
Wednesday	-	9am to 12 noon
Friday	-	9am to 12 noon

## ***THE MEL BAR*** ***MILLENNIUM HOUSE*** ***Licensed Free House***

**GUEST ALES - LAGERS - CIDERS - WINES - SPIRITS**

### **Opening Hours**

Mon - Thu	-	5 pm to 11 pm
Fridays	-	3 pm to 11 pm
Saturday	-	12 noon to 11 pm
Sunday	-	12 noon to 11 pm

**01579 363096**



### **NEWS from *the MEL***

We will be open as usual during the work on the Millennium House Car Park.