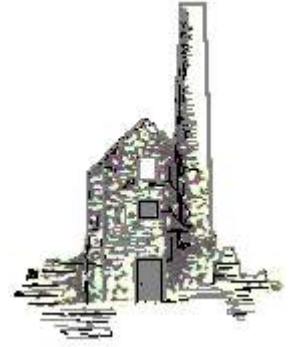


# THE PARISH PUMP



July 2018  
Edition 440



**The Newsletter for the Parish of St Ives**



Pensilva School - proud of its positive Ofsted report. (pg 7)

## Disclaimer

The articles appearing in this magazine do not necessarily reflect the views of the Parish Council nor of the Parish Pump Editor.

## Parish Councillors Telephone List

Peter Haimes (chair)	01579 362459	Alan Moss (vice-chair)	01579 362064
James Bruce	07411 192645	Marlene Carr	01579 362919
Martin Corney	01579 382450	Angie Haimes	01579 362459
Rosemary Farley	01579 384810	Tony Hodson	07973 536964
Nigel Libby	07968 891814	Kath Parkes	01579 362005
Ivor Vaughan	07979 934604	Craig Vaughnley	01579 364083
Sharon Daw (Cornwall Councillor) 07837 379305 slash.dash.daw@gmail.com			

## Meetings of St Ive Parish Council

**2nd Monday monthly:** Parish Council Meeting, alternating between St Ive Village Hall and Millennium House (please refer to notice boards for the agenda showing start time and venue each month). Any changes to the regular dates (i.e. Bank Holidays etc.) will be publicised accordingly.

**4th Tuesday Monthly:** Parish Council Planning Committee Meeting, 7 pm at Millennium House Pensilva, followed by the Parish Council Finance & Administration Committee Meeting commencing at 7.30 in the same venue.

## Date of Next Parish Council Meeting

Monday 9th July 2018 at 7:30pm at St Ive



Devon & Cornwall Police  
Building safer communities together



101

Minicom 18001 101

## Police Community Neighbourhood Office

Your Community Support Officer is PCSO Bex STEED 30169.

email: CIOSNBMLiskeard@devonandcornwall.pnn.police.uk

To report a crime call 101 or go to [www.devon-cornwall.police.uk](http://www.devon-cornwall.police.uk)

In an emergency call 999

## Contact details for St. Ive Parish Council and for Millennium House

Address for correspondence: Millennium House, Century Square, Pensilva PL14 5NF

General Parish matters should be raised initially with the Parish Clerk, Jenny Hoskin, who will present them to the Parish Council.

Telephone: 01579 363096, email: [stiveparish@btconnect.com](mailto:stiveparish@btconnect.com)

For accounts matters for the Parish and for Millennium House contact John Body, Finance Officer: 01579 363096, email: [millenniumhouseadmin@btconnect.com](mailto:millenniumhouseadmin@btconnect.com)

Millennium House enquiries and reservations: 01579 363096

email: [millenniumhouse@btconnect.com](mailto:millenniumhouse@btconnect.com).

On the web: Millennium House Website: [www.cornwallvenue.com](http://www.cornwallvenue.com)

Parish website: [st-ive-parishcouncil.gov.uk](http://st-ive-parishcouncil.gov.uk) Facebook: [facebook.com/stiveparishcouncil](https://facebook.com/stiveparishcouncil)

## Parish Pump Information and Contact Details

To contact the editor please email: [parishpump@btconnect.com](mailto:parishpump@btconnect.com)

or phone the Parish office: **01579 363096**.

Hardcopy submissions by post or by hand to the Parish office, Millennium House.

Softcopy submissions: By email to the editor in MS Word, MS Publisher, pdf, Tiff or jpeg. Please use A4 pages and minimum 16 point font as the Pump is initially produced in A4 size and reduced to an A5 booklet at the printing stage. If in doubt please contact the editor.

**Current Advertising Prices** including VAT at 20%

Per issue:     Quarter Page £7.50     Half Page £15.00     Full Page £25.00

10% discount for 12 months paid in advance.

Bargain Corner free ads by email to the editor or drop off at the Parish Office.

**Deadline for the Parish Pump is STRICTLY 15th of every month**

## THE MEL BAR

Relax and wind down  
at the Mel Bar, Millennium House



## From the Editor

Well the exam season is just about over for most of our young people taking GCSE's, A' levels, and other qualifications. I still vividly remember coming out of that last exam and gradually registering that the World was still turning and I was, apparently, still a part of it. Exams can be a great trial, but the euphoria afterwards is second to none; a bit like the man who keeps bashing his head against a wall because he likes how it feels when he stops! So, you recent examinees, enjoy it! In fact, the same applies to those who have yet to be subjected to exams, and to those for whom education is a not-so-recent memory. Between the end of the exam season and the arrival of the results we have what is traditionally referred to in our country (often with a trace of irony) as "The Summer". OK, so the summer doesn't always live up to expectations, but the weather as I write this is truly spectacular and the forecast has to be seen to be believed! Of course there is more to life than the weather, but nevertheless, let's all enjoy this time, come what may!

Keep well - Joe

## Millennium House Opening Hours

### Reception

9am till 2.30pm Monday to Friday

### Community Coffee Shop

See separate notice on next page

### Bar

5pm till 11pm Monday to Thursday

3pm till 11pm Friday

12am till 11pm Saturday and Sunday

If no-one is available please leave a message in our **letter box** at the front of the building or on our answer phone by calling **01579 363096**.

# *COMMUNITY COFFEE SHOP MILLENNIUM HOUSE, PENSILVA*

We are pleased to announce that the Volunteers have agreed to open the Coffee Shop on Thursdays from 5th July 2018 making it a full week.

Monday	10.a.m. to 1.p.m.
Tuesday	9.a.m. to 1.p.m.
Wednesday	9.a.m. to 1.p.m.
* Thursday	9.a.m. to 1.p.m.*
Friday	9.a.m. to 1.p.m.

\*Incorporating a Coffee Morning from 10.a.m. to 12 noon. To include free raffle ticket per week - raffle drawn end of each month. Special offer on coffee/tea/cake during this period. \*

A revised menu will be available, offering more choices.

Open to smaller groups of up to 25 (pre booked) for Cream teas - buffet- lunch bites.

We are happy to provide a service but rely on the valued support of the community.

*OUR SINCERE THANKS TO EVERYONE*

## **FIFA WORLD CUP**

England's matches and all the other big games will continue to be shown live at Millennium House, Pensilva, in the bar or on the big screen in the function room.



## **Parish Council Chairman's Column**

By the time you are reading this Carnival week will be upon us, so please enjoy yourselves and support the various groups putting on events and the Carnival committee who work hard to bring it all together.

We have at last got a date to have the car park at Millennium House to be resurfaced. Unfortunately we were unable, for various reasons, to get it done before Carnival, but it will be starting on the 7th of August, which means the car park will be closed for two weeks from then to allow the work to be completed.

At the last Council meeting it was agreed that there will be no Council or Committee meetings in August. This allows for Councillors holidays and the car park being closed.

The Council is investigating the possibility of refurbishing the village pump house and would like to know if anyone has any old photographs or pictures of the pump house and associated pump, that the Council could look at and perhaps copy, to aid the refurbishment.

The weather forecasters keep telling us we are in for a hot summer, I hope they are right and that the sun shines for Carnival, and that the children have good weather for the school holidays.

Pete Haimes.



**SEW, KNIT AND NATTER.  
WHY NOT JOIN US ON  
THE LAST TUESDAY OF EACH MONTH  
for sewing, knitting or just for a chat and a  
cup of tea or coffee and cake.**

**We meet at ST JOHN'S CHURCH, PENSILVA from 2pm to 4pm.**

## COVER STORY - News from Pensilva Primary School

Pensilva Primary School are celebrating following their recent Ofsted inspection which confirms that the “**school continues to be good**”.

The Headteacher, Teresa Clinick remarked that, “Governors and staff are pleased the inspector recognised that, *“teachers in all classes stimulate pupils’ interest through a range of thought-provoking texts and topics.”* Delivery of a broad, exciting and engaging curriculum is of high importance to us; we want to enthuse our pupils and everybody to become lifelong learners.” The positive and effective links forged by the Reception Year staff with parents and with the on-site Pre-School was praised. The Ofsted report also notes that the parent questionnaire showed that they *“highly value the work of the school and would recommend it to other parents. A typical comment included, ‘My children love going to school and say that although sometimes it is hard work, they also have a lot of fun learning.’”*

Responses showed that pupils are well looked after and feel safe at this school. Pupils who spoke with the Ofsted inspector *“wholeheartedly expressed this same view. They said, ‘We feel safe in school because there is always an adult to go to who will listen to us.’ Pupils also said, ‘We know how to stay safe when using computers and feel safe because we have lots of friends.’”* We would like to thank everybody linked to our school for all their hard work and continued dedication. The school continually strives to enhance provision. From the 19<sup>th</sup> June 2018, the school will be offering afterschool care as well as the existing breakfast club. This will run every school day until 5.30pm.

### **Supporting Guiding & Scouting Activities in Pensilva 200 CLUB Draw Results for April**

<b>1st No. 42 Mrs. L. Pengelly</b>	<b>2nd No 148 Mr A Worden</b>	<b>3rd No 59 Mrs C Woodhouse</b>
--	-----------------------------------	--------------------------------------

**Thank you for your support**

## **Pensilva Community Association**

We have been busy! In the last few months Pensilva Community Association has been planning activities in the village to meet the needs of our community, bring people together, and – most importantly – that people will enjoy.

We have lots of ideas, including:

- Computer classes for those who want to learn how to use their phone, tablet, or laptop, from complete beginners to those who want to use specific packages. We've already held some introduction sessions, and are about to start the classes on a Thursday. Our provider is contacting people this week who attended our open days.
- Board games or cards sessions in the café once every two weeks. If you enjoy a game of Scrabble or Euchre and would be interested in this, please get in touch so we can keep you informed of progress.
- An exercise class, the details of which are still being worked out.
- Coffee and cake morning (after the school run) for mums, dads, and carers.
- A holiday club for 5 to 11 year olds during the school holidays, to help working parents. This is very much a long term idea as it takes a lot of work to set up and get funding to run it.
- A regular youth group meeting. We know the village has been seriously lacking in youth activities for a long time now.
- To bring back the village pantomime!

These are our ideas, but what we really need to know is what do YOU want to see running in your Millennium House Community Centre? We're open to all ideas, and may be able to secure some funding for them. We'd especially like to hear from anyone who help to run one of the proposed groups!

You can leave a note for PCA at the Millennium Centre reception, or by email on [pensilvacommunity@gmail.com](mailto:pensilvacommunity@gmail.com) , and tell us what you want!

**The Committee, Pensilva Community Association**



## Volunteering Opportunity

**Gorfenna Community** in conjunction with **The Royal Voluntary Service** are asking for volunteers to enlist and help to provide older people and those living with Dementia with regular company and conversation.

The Royal Voluntary Service relies on teams of local volunteers to run community activities and is supported by funds raised by players of the Peoples Postcode Lottery. The RVS is one of Britain's largest volunteering charities with over 25,000 volunteers supporting thousands of older people each month in hospitals and the community. Gorfenna Community has joined with RVS to provide services for older people and people of any age who may be living with Dementia. Mandy Turner, Royal Voluntary Service's Community Engagement and Development worker for Devon & Cornwall, said: "For anyone with a little spare time that is looking for a way to contribute to the local community, for example people that are recently retired, volunteering is hugely rewarding." Previous research for the RVS found that people who volunteer are happier and healthier than their counterparts who don't.

Working with Gorfenna Community will widen the support network, giving older people and also anyone living with dementia the opportunity to mix and socialise in a safe, supportive environment. The focus is on building confidence, improving well-being and keeping loneliness at bay through an array of social activities and more structured support.

If you think you would like to become a volunteer or find out more about what is taking place, please come along to the **Open Day** taking place on **4<sup>th</sup> August 2018 from 11.00-2.00** at Gorfenna, St Ive, Near Liskeard, PL14 3LX or call Gorfenna Community on 01579 384810. If you are interested in volunteering but are unable to attend on the day please contact Mandy Turner via Mobil Phone 07787105160 or email [mandy.turner@royalvoluntaryservice.org.uk](mailto:mandy.turner@royalvoluntaryservice.org.uk)

## Pensilva WI June meeting

How well do you think you know your own town? Well at the June meeting the members found out when Brian Oldham came to show us old photographs of Liskeard and told historic tales about its buildings. One of them showed the town on VE Day when the news the war was over was announced. There were throngs of jubilant people as far as the eye could see. A reservoir which was useful in case the water supply had been interrupted was also visible. From the photographs many of the buildings were familiar and you were able to make the comparison between then and now. To many it brought back happy memories of how the town was many years ago.

President Frances Tucker warmly thanked Brian for his enlightening talk and it was thought that another visit might be on the cards as he had so many stories to tell and pictures to show which he had not had the time to use.

We ran through the business which included an excellent report by Jean who had attended the Annual Meeting in Cardiff. She encouraged members to attend in the future if they could as it was very inspiring.

Dates for your diary:

Saturday 7<sup>th</sup> July – Pensilva Gala Day

Saturday 7<sup>th</sup> July – ‘The Magic of the Beatles’ at Sterts. 7.30pm

Monday 30<sup>th</sup> July – ‘Steel Magnolias’ at Sterts

Saturday 25<sup>th</sup> August – ‘Oliver’ at Sterts

Saturday 9<sup>th</sup> September – Horticultural Show’

Competitions: Flower of the month, 1<sup>st</sup> Trish Thomas, 2<sup>nd</sup> Lorna Truscott, 3<sup>rd</sup> Jean Hoare. Monthly competition: ‘Photo or postcard of old Liskeard’ 1<sup>st</sup> Cherry Woodhouse, 2<sup>nd</sup> Pat Bates, 3<sup>rd</sup> Verna Dawe.

Next meeting: Wednesday 11<sup>th</sup> July when Kamella Clough will share her knowledge of healthy eating and weight control. We meet at Millennium House, Pensilva at 7.15pm and we look forward to welcoming you.

# THE Growing Project

PENSILVA



June has been a busy month with all of our summer crops now planted in situ, this includes tomatoes, squashes, cucumbers, aubergines and courgettes/marrows which are all in raised beds in our polytunnels and also kale, cabbages, purple sprouting broccoli and our outside varieties of cucumbers in our outside beds.

Our Autumn/Winter crops are at the stage of being potted on by our volunteers and we are hoping that later in the year we will be harvesting spinach, calabrese, cauliflowers, swedes, sprouts, kalettes as well as multiple varieties of cabbage, it would be fantastic if these all do well and can be delivered in our Christmas veg boxes (apologies to those avoiding the C word until December).

I was hoping we could slow down now and take things a little easier but while we have been planting crops the weeds have crept up on us, we also have some of our volunteers taking charge of our large quantities of compost, layering it correctly into various bins and moving it round the site. A big thankyou to all our volunteers for their hard work!

Our open day has been planned for Saturday the 21<sup>st</sup> of July 12pm- 3pm with tours of our site, tea and cake, children's activities and also a plant stall with some of our spare seedlings. Please send sunshine!

Our volunteer days are still running Wednesday 10am-2.30pm and Thursday 12- 3pm and anyone is welcome to turn up or, if you have any questions, give us a ring. We have recently welcomed 4 students taking part in the Duke of Edinburgh scheme who are putting in work on Tuesday and Friday evenings and are doing fantastic work watering, weeding, planting, picking, painting signs and making bird scarers.

Thank you for the recent donations of pallets, compost bins and water butts, all of which are now in use! We are currently in need of any spare plastic water pipe to make frames for brassica nets to keep the dreaded cabbage whites away from our cabbages.

Thank you to our regular vegetable box customers and those that buy from our roadside stalls for your support, if you are not yet buying our organic vegetables there are 2 ways you can buy from us – you can order a vegetable box and have it delivered to your door weekly or fortnightly, we offer a regular or large box and also an organic fruit box. You can also shop at our purple roadside stalls where you can find a variety of organic veg grown on our land and also from Riverford, at very competitive prices.

Our contact details are: Email [growingprojectpensilva@gmail.com](mailto:growingprojectpensilva@gmail.com)

Phone: 07398 828783 for veg box enquiries

Phone: 07854 353865 for admin / board secretary

## **St Ive and District Gardening Association**

June's visit saw St Ive & District Gardening Association making the most of a dry and warm evening following a day of sharp downpours, with a visit to two delightful gardens in South Hill – Anvil Cottage owned by Geoff & Barbara Clemerson and Windmills owned by the Tunnickliffes. The Clemersons have created an immaculate and very interesting garden in the decade or so they have been at Anvil Cottage after the garden had laid untouched for around 25 years. It boasts a very wide range of plants - some rare - and features a series of themed rooms including winding paths leading through exotic planting, a wildflower area and a lovely rose garden surrounding a circular lawn. Next door, Windmills is a lovely and extremely varied garden with a great deal to see. As well as lawns fringed with interesting trees and shrubs, a large pond, rockery and pergola, there is a large vegetable plot and soft fruit area. With lots of plants in flower, the club members thoroughly enjoyed exploring both gardens.

The club's August visit is to Troutbeck Plants and Nursery on Monday 6 August. For further details please ring 01579 382762 or 382512.

## **PENSILVA CARNIVAL PROCESSION**

Unfortunately, due to a lack of volunteers, this year's procession will only go from Slade Park Road to the Recreation Field top gate.

## **PARISH PUMP DISTRIBUTION**

I would like to thank Mike and Janet Marsh for their help with the Parish Pump distribution over the last few months. Unfortunately they have moved out of the Parish, leaving us short of an overall distribution co-ordinator and of distributors for Glen Park.

If anybody can help, please contact me on 01579 364016, or email [parishpump@btconnect.com](mailto:parishpump@btconnect.com).

Many thanks - Joe Bicarregui (editor)

## **COMMUNITY COFFEE SHOP**

### **in MILLENNIUM HOUSE PENSILVA**

THE COFFEE SHOP IS NOW OPEN AT THE FOLLOWING TIMES:

MONDAYS	10.00am - 1.00pm
TUESDAYS	9.00am - 1.00pm
WEDNESDAYS	9.00am - 1.00pm
THURSDAYS	9.00am - 1.00pm (coffee morning 10-12)
FRIDAYS	9.00am - 1.00pm

## **Pensioners Lunch**

2 Course Meal plus Tea or Coffee  
**Only £5.50**

Every Tuesday here at Millennium House  
Speak to our reception or  
telephone Millennium House on **01579 363096**



So why not join us for Good  
Food and Good Company, all on  
the day you collect your  
pension?

## **MOBILE LIBRARY**

The County Mobile Library visits our area once a month on Fridays of "Week 3" (NOTE: not necessarily the 3rd Friday of the month).



Next visits: 8th Jun, 6th Jul.

**Stops at:**

**The Victoria Inn, Pensilva at 10.25 to 10.45am;**

**Quethiock bus stop. 11.00 to 11.20am.**

**Ruth and Colleen's Monthly**

**BINGO**

**At Millennium House**

**on Tuesday 3rd July**

**Then 7th August**

**Eyes down at 7:30pm**

**Over 18's only**

**£££ CASH PRIZES £££**

**QUIZZES AT MILLENNIUM HOUSE**

**NEXT QUIZ: SATURDAY JULY 3RD, 7:30PM**

Then: September 1st, October 13th, December 8th

**All at 7:30pm**

**Organised by and raising funds for**

***All Being Well***

**Improving the health of our community**

# Don't miss the Liskeard Show



at Merrymeet, from 8am



## Saturday 14th July

Main Ring Attractions, Horses, Cattle,  
Sheep, Donkeys, Dog Show, Trade Stands,  
Live Music, Shopping/Craft, Cornish Food  
and Homes & Gardens Marquees,  
Pet's Corner, Children's Entertainer,  
Fun Fair and Bouncy Castle



### A GREAT FAMILY DAY OUT



Adults £10, Children (5-15yrs) £4, Under 5's free  
Family (2&2) £22 **Free Car Parking**

[www.liskeardshow.org](http://www.liskeardshow.org)

Email: [info@liskeardshow.org](mailto:info@liskeardshow.org)

Tel: 07894 456 099 Registered Charity No. 1170999

1st

South Hill Parish Hall in Golberdon  
PL177ND



July 21<sup>st</sup>



from 7:30pm

tickets

hallbookings@south-hill.co.uk  
or South Hill Parish FB page  
refreshments extra



Outside seating available, (inside if wet) or  
bring your loungers and picnic rugs.



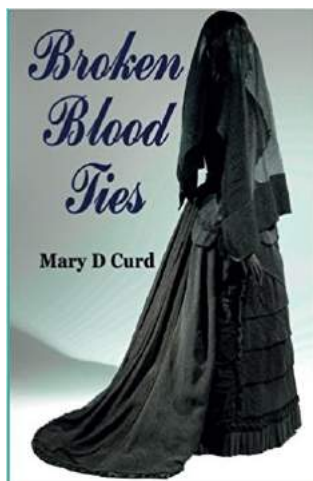
Enjoy the evening with us and  
help raise funds for new hall flooring.



## LOOKING FOR A SUMMER READ?

*LOCAL AUTHOR*, Mary Curd, has recently published the awaited second mystery/suspense title in her Victorian Trilogy. The third title to be published in time for Christmas!

Both novels are available on Amazon in Kindle and paperback. Preview freely available on Amazon books ([www.amazon.co.uk/books](http://www.amazon.co.uk/books))



*Can a dream be prophetic..?*

*Mary will be at Pensilva Carnival Day on July 7th signing copies of her books!*



*The Saga continues...*

# 42ND QUETHIOCK SHOW

## SATURDAY JULY 21ST

TO BE OPENED BY PHIL SEEVA AT 2:30PM

STALLS, BOUNCY CASTLE, REFRESHMENT

SCHEDULES FROM GILL KENT 01579 346643

STALLS WELCOME



## **ST IVE SINGING GROUP...**

... is on summer break from June until September 6th.  
You can hear us at the St Ive Show, on Saturday Sept. 1st.

For more info call Clare on 01579 382341

### **PENSILVA WEDNESDAY CLUB R.V.S**

**Meet in Pensilva Village Hall at 2.30.p.m. on alternate  
Wednesdays**

**All Adults welcome to join - £1 per meeting -  
Refreshments - Various activities - Entertainment -  
Coach Trips - Raffle**

**Information: please contact Jane Mann 01579 362960**

## **St Ive Church Produce Market**

Every 1<sup>st</sup> Friday 10:30 to 1:30pm

Homemade Cakes Fresh Vegetables

Jams Pickles Local made Pasties

Bric-a-brac and much more - also

### **Home Reared Traditional Meat**

Pork, Beef, Chicken, Dry Cured Bacon, Sausages from

### **Trehill Farm Produce**

*Cooked Lunch available from 11:30 only £4.50*

## **PENSILVA MEMORY CAFE**

DO YOU HAVE MEMORY PROBLEMS OR CARE FOR SOMEONE WHO DOES? WHETHER IT'S MILD, MODERATE OR SEVERE YOU CAN SOMETIMES FEEL A BIT ISOLATED AND ALONE.



DON'T BE LONELY. KEEP SMILING. THERE ARE MANY OTHERS LIVING WITH THIS CONDITION.

COME AND JOIN US ONCE A MONTH FOR SOME FUN AND LAUGHTER, MUSIC & REMINISCENCES.

WE MEET ON THE FOURTH THURSDAY OF EACH MONTH AT ST JOHN'S CHURCH FROM 2PM – 4PM.

WE ALSO SUPPLY TEA/COFFEE AND CAKES.

DONATIONS OF £1 PER PERSON APPRECIATED FOR MORE INFO PHONE PAT 01579 363461 OR CAROLYN 01579 362698

The collection point for the

**foodbank**

is now open every day from  
10am to 4pm

in St John's Church, Pensilva.

# PENSILVA GROUP MEETINGS NOW AT 5:30pm AS WELL AS 7:30pm

be inspired  
with  
**Slimming  
World**



**MONDAY PENSILVA 5:30 and 7:30 pm**  
The Millennium Centre, Princess Road,  
Pensilva, Liskeard PL14 5NF.  
Tel: Hayley **07966 370233**

**TUESDAY LISKEARD**  
**9:30am, 11:30am, 5:30pm or 7:30pm**  
Lower Hall, Church St., Liskeard  
PL14 3AQ. Tel: Vicki **07973 402829**

**WEDNESDAY LISKEARD 9:30am**  
Liskeard & District Sports Association,  
Lux Park Coldstyle Road Liskeard  
PL14 3HZ. Tel: Sammy **07807 289801**

**THURSDAY DOBWALLS 5:30 or 7:30pm**  
Dobwalls Football Club Dobwalls Liskeard  
PL14 4LU. Tel: Sammy **07807 289801**

**FRIDAY GOLBERDON 9:30am**  
Golberdon Village Hall Nr Callington  
PL17 7ND. Tel: Jane **07769 734316**



[slimmingworld.co.uk](http://slimmingworld.co.uk)



# ***Badminton?***

Come and join our relaxed and friendly group at Pensilva Millennium House

**Mon & Tue 7.30 - 9.30pm**

**Friday 8.00 - 10.00pm**

**For further info phone**

**Nigel or Carol on**

**01579 363594 or**

**07885 798370**

# ***All Being Well***

Your local, friendly gym.

Over 18 years working in our local community to improve health, fitness and well being. Call **01579 363890**, drop in at Millennium House, Pensilva, or email [abwgym@gmail.com](mailto:abwgym@gmail.com)

## Opening hours:

Mon/Fri	10am-3pm & 5pm-9pm
Wed	10am to 3pm
Tues/Thur	9am to 1pm
Saturday	10am to 1pm

**Ask about GP exercise referrals!**

# ***PENMILL ART GROUP***

We are a small, friendly group using all art mediums. If you paint we would love you to join us.

We meet at

Millennium House

**10-2 every Monday.**

Please come & see us or phone Pam on

**01579 363441.**

# **LISKERRET MALE VOICE CHOIR**

We are currently looking for new members in all sections. No previous experience necessary.

Practice Mondays 7:30pm at the Royal British Legion, Liskeard.

Enquiries to the secretary on

**01579 363881**

Email: [charaton@btinternet.com](mailto:charaton@btinternet.com)

Website: [www.liskerretmvc.org](http://www.liskerretmvc.org)

Charity No. 1120243

## PENSILVA VILLAGE HALL

Anyone wishing to book the hall for meetings, birthday parties or fundraisers please contact Peter or Jackie Browning on **01579 363212** or email **peter@pensilva.freeserve.co.uk**.



Please note that as well as hall rent there is a coin meter for heating at 40p/hr.

We hold a Hall users and committee meeting on the fourth Monday of each month at 7.00pm. Please feel free to come along and support us.

### Organisations that meet in Pensilva Village Hall

Meeting Times	Organisation	Contact Person	Telephone
Mon. 4:00 - 6:00	Brownies	Mrs Martha Oliver	01579 362239
Alternate Wed. 2:30 - 4:00	Wednesday Club	Mrs Jean Conner	01579 363221
Wed. 7:00 & various	Snooker Club	Mr Philip Bond	01579 362091
Thu. 6:00 - 8:00	Guides	Miss Caroline Hambly	01579 363228
Fri. 1:00 - 3:00	MIMS	Chris	01579 343702
Fri. 4:00 - 5:00	Rainbows	Mrs Lynne Bond	01579 362091

### St Ive Institute & Village Hall

Every Wednesday	10:30am to 12 noon 10:30am to 11:30am	Coffee morning Travelling Post Office
First Monday	7:30pm	St Ive Gardening Club
Every Monday & Thursday	7:00pm	St Ive Snooker Club

**NHS  
REGISTERED**



**SUPPORTED BY  
LOCAL DOCTORS**

## **Do you suffer with various long term health conditions?**

Come along and join our small, friendly group.  
For company, light exercise and support.

Upstairs in Millennium House every Monday from 12.30pm - 2.30pm

For more information contact us:

Pauline **01579 345989**

Jeanette **01579 363691** The **co-operative**  
Community Fund



## **DO YOU NEED A HELPING HAND?**

Reliable, friendly,  
experienced, mature  
local resident offering  
the following services:



**Cleaning      Ironing**

**Shopping      Light Gardening      Dog Walking**

CRB/DBS checked and fully insured.      Competitive rates.

**Contact Jess:** Telephone or text: 07934 764 327.



Email: [homeangel77@yahoo.com](mailto:homeangel77@yahoo.com). Find us on Facebook

## PENSILVA HEALTH CENTRE - PATIENT PARTICIPATION GROUP

We are a group of patients who meet regularly with the Health Centre to bring forward for discussion ideas, comments and suggestions about your surgery. In the past we have held open days, helped at the flu clinics and participated in a trial Peoples Commissioning Board Project.

We also organise a Carer's and bereavement group (see below) and a 'Walking for Health' group

**(Contact Ivor Vaughan 07979 934604 ).**

You can contact us directly or through the Health Centre.

## PENSILVA HEALTH CENTRE CARERS AND BEREAVEMENT GROUP

**Are you a carer, bereaved or lonely? Then come along and join our Group. Tea, Coffee and plenty of friendly chat and, when possible, local trips to various venues.**

**Meetings are held every third Thursday of each month at 11.30.a.m.  
Meet in Millennium House car park.**

**For any information please contact Jean Connor 01579 363221**



## **Struggling with Sight Loss?**

iSight Cornwall offers practical help to people living with sight loss in Cornwall including:

Low Vision: Advice for low vision aids

Assistive Technology: Advice on products

Benefits Advice: Assistance to claim entitlements

Equipment Demonstration: Advice on gadgets

Social Clubs & Activities: Links to clubs & activities in the county

For more details Telephone 01872 261110 or visit

[www.isightcornwall.org.uk](http://www.isightcornwall.org.uk)



# **St Ive Methodist Chapel**

## ***Services for July 2018***

<b>Sun 1st July</b>	11am	Mr Bernard Melling
	4.30pm	Circuit Service at The Zone, Dowlerry
<b>Sun 8th July</b>	11am	No Service
	4pm	Anniversary Tea, followed by, at
	6pm	By a concert by Levow Kesson from St Neot.
<b>Sun 15th July</b>	11 am	Mrs Barbara Snowling
<b>Sun 22nd July</b>	11 am	Mr Bernard Melling
	5pm	“Food for Thought” at St John’s
<b>Sun 29th July</b>	11am	Rev Iris Bray with Communion

For regular updates on services etc at the Chapel, as well as around the area, look at the St Ive Methodist Church Facebook page.

Saturday 30th June and Sunday 1st July, our Circuit are holding a Circuit Celebration event at "The Zone", formerly Dowlerry Methodist Chapel, to celebrate the work done by all the Churches within the Circuit. Please keep an eye on our Facebook page for more details.

Sunday 8th is the 2nd part of our 158th Anniversary Celebrations with a tea in the schoolroom to which all are welcome to join with us, followed by a Choir Concert, no charge for either but a collection will be taken.

Village Churches Together group will meet 7:30pm at St John’s Pensilva on Tuesday 17th July. Everyone welcome. More details from Keith on 01579 382334.

The Chattermakers craft group will meet on Thursday 5th and 19th July in the Guild room from 7:30pm. This is a group open to anyone that likes to do any craft and would like to share with others of a like mind (hence the ‘Chatter’ bit!!) More details from Kathryn on 01579 382334. All welcome.

The Village Church Prayer meeting will also be held at St Ive Chapel on Thursday 5th and 19th July from 7:30pm. All welcome

# St Ive Church

## **Services at 11:15am Every Sunday**

- Jul 1st**            **Holy Communion**
- Jul 8th**            **Family Service.** Small pets welcome
- Jul 15th**          **Holy Communion.** Lunch follows this service
- Jul 22nd**         **Morning Worship**
- Jul 29th**         **Together at Ten at Menheniot 10am** (No service at St Ive)
- .....

## Other July Events

- Fri 6th**         **Produce Market and Bric-a-brac**  
Home made cakes etc, fresh vegetables, locally made pasties, pickles, jams and much more. Farm fresh meat from Trehill Farm Produce.
- Cream Teas in Church. Sun 1st and every Sunday till September. 2.30 - 5pm**  
Delicious homemade scones and cakes.
- Sun 15th**     **Lunch in Church 12:45pm.** All welcome. 2 course lunch only £7.

Reverend Margot Davies                     **01579 208698** email [margotaj@tiscali.co.uk](mailto:margotaj@tiscali.co.uk)

Church Wardens            Brian Dwelly         **01579 364010** [btdwelly@aol.com](mailto:btdwelly@aol.com)  
    Colin Catchpole **01579 383867** [ccatchpole@hotmail.com](mailto:ccatchpole@hotmail.com)

Donations for Liskeard Food Bank can be left in the Church each day between 10am & 4pm

## **Alford Joinery - For all your joinery needs**

**Specialists in bespoke doors, windows, staircases, conservatories, etc.**

- **20 years experience**
- **Large or small jobs**                                     **01208 873444 or 07757 666460**
- **All joinery hand-crafted**                                 **info@alfordjoinery.com**
- **Top quality FSC certified timbers**                 **www.alfordjoinery.com**
- **All joinery can be fitted if required.**

# Your Pull-Out **PENSILVA CARNIVAL GUIDE**

MILLENNIUM HOUSE EVENTS COMMITTEE PRESENTS

**JULY**  
**7<sup>th</sup> 2018**

# **PENSILVA CARNIVAL**



**SCREECH OWL SANCTUARY  
FANCY DRESS  
CARNIVAL PROCESSION  
CAR BOOT SALE  
EVENING DISCO**

**BBQ  
ZORBING  
DOG SHOW  
VINTAGE CARS  
AND MORE!**

**MILLENNIUM HOUSE, PENSILVA,  
PL14-5NF**

## Your Pull-Out **PENSILVA CARNIVAL GUIDE**

# **PENSILVA CARNIVAL WEEK** 2018

**01**  
JUL

**WALKING TREASURE HUNT (PRESCHOOL)**  
SUNDAY, MEET AT 10:30AM AT MILLENNIUM HOUSE

**01**  
JUL

**AFTERNOON TEA AND CAR TREASURE HUNT**  
AFTERNOON TEA AND STALLS FROM 2:30PM. CAR REGISTRATION AT 3PM

**02**  
JUL

**BOARD GAMES & EUCHRE (RELAY FOR LIFE)**  
MONDAY NIGHT, BOARDGAMES FROM 6PM, ADULTS EUCHRE FROM 7:30

**03**  
JUL

**QUIZ NIGHT (ALL BEING WELL)**  
TUESDAY 7:30PM

**04**  
JUL

**MOVIE NIGHT (PSA)**  
WEDNESDAY 5:30PM KIDS - "EARLY MAN"; 8:30PM ADULTS - "SEX IN THE CITY"

**05**  
JUL

**BINGO (BRITISH HEART FOUNDATION)**  
THURSDAY, DOORS AT 7:30PM

**06**  
JUL

**DONKEY DERBY (FOOTBALL CLUB)**  
FRIDAY 7:30PM

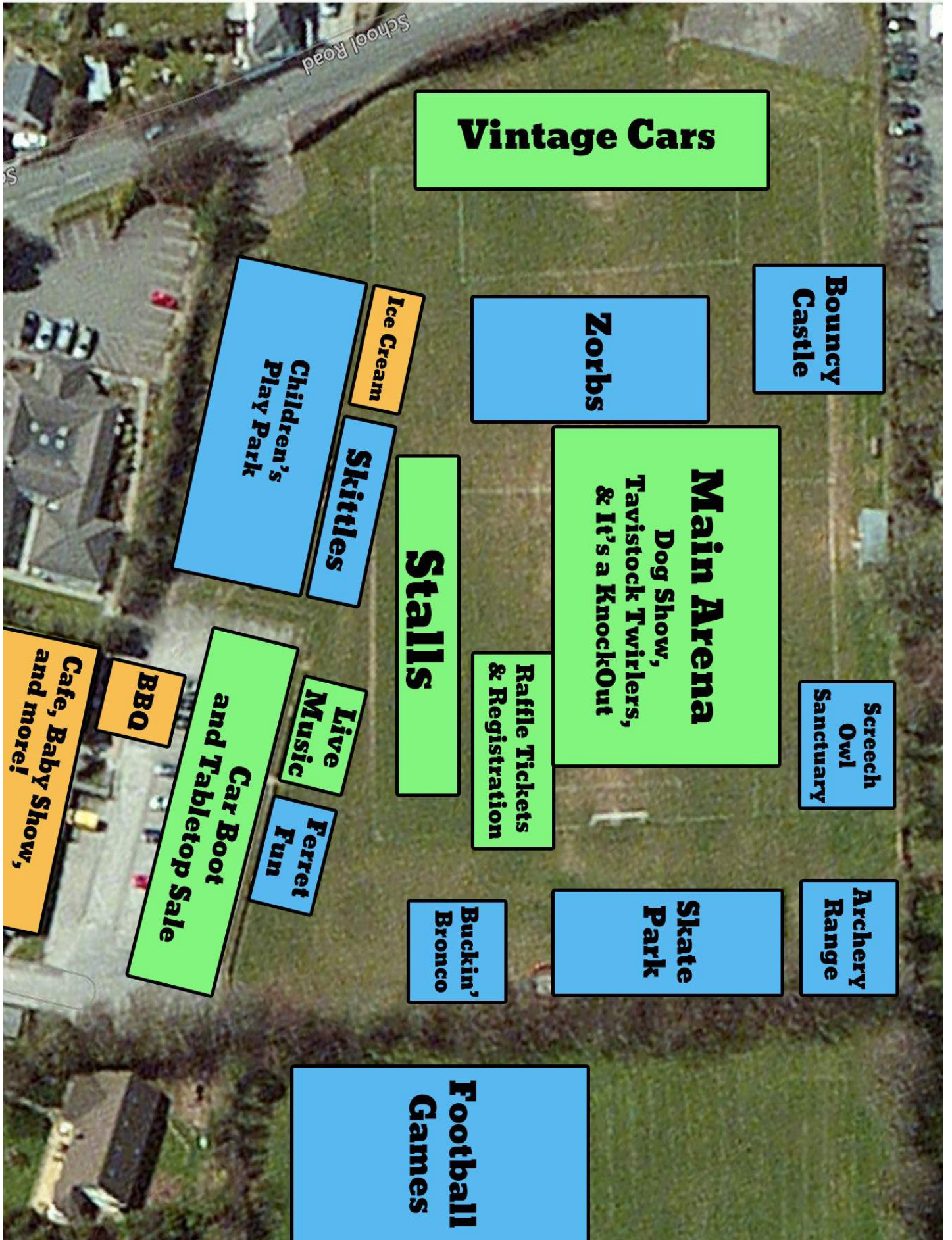
## **Your Pull-Out PENSILVA CARNIVAL GUIDE**

# **PENSILVA CARNIVAL DAY**

**7th July 2018**  
**Programme of Events**

- 12:00**      **Fancy dress registration:**  
**-12:30**      **50p entry per person**  
                 **5 and under, 6-11, 12+, pairs,**  
                 **groups, and floats.**
- 12:30**      **Fancy dress judging and**  
                 **presentations.**
- 13:00**      **Parade begins.**
- 13:30**      **Dog show:**  
                 **£1 entry per class,**  
                 **details on day**
- 14:00**      **Baby Show (free entry):**  
                 **0-6 months, 7-12, 13-18.**
- 14:30**      **Tavistock twirlers**
- 15:45**      **Raffle draw**
- 16:15**      **It's a Knockout!**
- 19:30**      **Disco @ Millennium House**  
**till late**      **(£1 entry)**

# Your Pull-Out PENSILVA CARNIVAL GUIDE



# ST JOHN'S CHURCH, PENSILVA

## Services for July 2018

Anglicans and Methodists share services at 11 am each Sunday, coffee served before service

Sunday 1st	(10am 11 am	Anglican Benefice Eucharist at St Cleer) Dr Marin O'Connell
Sunday 8th	11 am	Café Church
Sunday 15th	11 am	Anglican Holy Communion
Sunday 22nd	11 am	Mr David Wenmouth
	5 pm	<b>Food for Thought</b> at St John's Church
Sunday 29th	11am	Rev. Sue Hill, Holy Communion

**Café Style Church** followed by coffee and chat, Thursday mornings, 10am, everyone very welcome.

**Strawberry Tea**, Friday 6th July, 3pm at St John's. Strawberries & cream etc, cup of tea and a chat, in aid of Global Family Mission, everyone welcome to join us.

**Fellowship Group** 7:30pm on Friday 6th and Friday 20th July. Contact Carolyn on 362698 for details.

**Prayer Group:** 2pm Fri. 13th & 27th July. Please ring Eileen on 362580 or Carolyn 362698 if you would like prayer for yourself or someone else.

*For further details of the Services held in St John's, if you know of any illness or need in the village or if you would like your wedding or baptism in the church, please contact:*

*Geoff Cox - 362698 or Frances Tucker - 363718*

## Trerosa Studios

**Pottery & Woodturning activities for you to enjoy**

Well equipped

All materials provided

Help / tuition from qualified teacher if required

01579 647247 or 07486 089466

Email: [bob@trerosacrafts.co.uk](mailto:bob@trerosacrafts.co.uk) [www.trerosacrafts.co.uk](http://www.trerosacrafts.co.uk)

High quality professional tools

Small friendly atmosphere

# **ADVERTISE**

# **HERE!**

This box for **just £25 per month** including VAT.

**10% discount** for a 12 month order.

i.e. **£18.75 + VAT** per month for 12 months

See the full tariff on page 3

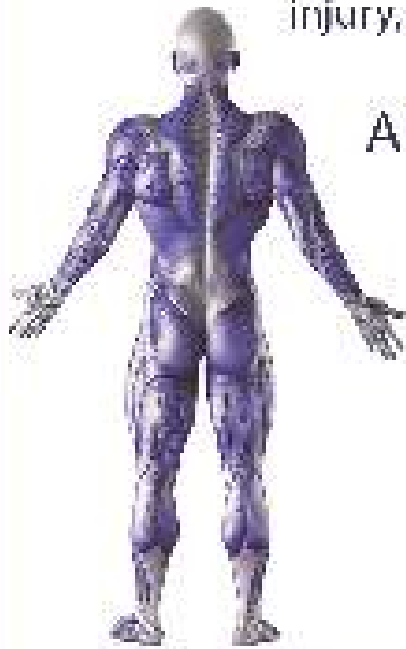
One thousand copies per month  
distributed free of charge to  
households in the Parish of St Ive.



## QUALIFIED RAYNOR MASSAGE THERAPIST

RELAXING AND THERAPEUTIC DEEP TISSUE MASSAGE TREATMENTS

Effective for many different types of chronic pain, sports injury, stress and tension related problems



APPOINTMENTS AVAILABLE AT

THE WELLBEING CENTRE  
LISKEARD 01579 344090

THE NATURAL WAY  
LISKEARD 01579 345300

Contact : Tina North  
Phone : 07720 832322

[tina-north@massage-therapy-cornwall.co.uk](mailto:tina-north@massage-therapy-cornwall.co.uk)



## R J Gardening & Handyman Services

All aspects of gardening and handyman work undertaken.

- ~Local and Trustworthy
- ~Hard Working
- ~Reliable and Experienced
- ~No job too small
- ~Competitive rates

Contact Raymond on:

07541 229064 or 01579 347622

[raymond\\_pearcegb@yahoo.com](mailto:raymond_pearcegb@yahoo.com)

Find us on Facebook.





# R&C



## Groundworks and Landscapes

Fencing	Patios
Paths & Steps	
Turf & Astro turf	
Driveways	Rendering
Retaining walls	Decking
Digger work	
Footings & foundations	

**And more**

Free no obligation quotes

**Call Rob on:**

**07518246666 or  
01579 641802**

# Window Cleaner Window Cleaner

Also any upvc cleaned

i.e. fascias, gutters, etc.

gutters cleared & unblocked

Please phone Rob

**07709 053464**

# Window Cleaner Window Cleaner

**Save Costly Energy!**



## SOLARTEC

Windows &  
Conservatories Ltd

**'A' Rated WINDOWS & DOORS  
at BEST PRICES EVER!**



Professionally fitted and finished by us with a



10 year ins. guarantee.  
In all colours



**NEW**

**FACTORY SHOP  
SUPPLY ONLY**

For all your windows, doors, conservatories,  
fascia, trims, guttering and sealants

**7-10 DAY TURN AROUND ON WINDOWS,  
DOORS and CONSERVATORIES**

**TEL: 01579 343425**

**FAX: 01579 344500**

WEBSITE: [www.solartecwindows.co.uk](http://www.solartecwindows.co.uk)

EMAIL: [sales@solartecwindows.co.uk](mailto:sales@solartecwindows.co.uk)

**KEEPING JOBS IN CORNWALL**



# PJR Garden Services

## Phil Rule

All aspects of garden  
work - grass / hedge  
cutting, patios, fencing  
etc.

**Mobile 07387 449004**

**Tom Marshall**

**TM Plastering**

Plasterer and Property Care

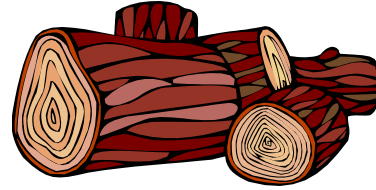
**07544819284**

Tommarshallcornwall@gmail.com

**Free estimates**

- Internal plastering
- Internal / external rendering
- Damp proofing
- Stud Walls
- Patio laying
- Chimney repairs
- Pointing
- Painting

**SEASONED LOGS**



**MIXED LOAD**  
or  
**HARDWOOD**

Tel Jonathan

Mobile 07966 070725

or  
01579 363157

Also tree/hedge work  
undertaken

## **DAVID HEWETT GARDEN SERVICES**

**For all aspects of garden care:**

**lawn mowing, grass cutting,**

**strimming, hedge cutting,**

**clearance, and more.**

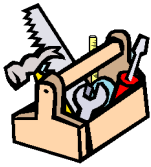
**01579 363796**

**25 years experience.**

**Fully insured.**

# KEEP IT TIDY

General Property Maintenance  
including Decorating, plus Electrical



**HONEST PRICE**  
for  
**QUALITY WORK.**



**No Job Too Small**

**Kit Rickard**

18 Higher Glen Park  
Pensilva

**Phone:** 01579 363378

**Mobile:** 07855 699071

**Email:** [KITKeepItTidy@hotmail.com](mailto:KITKeepItTidy@hotmail.com)

# Chiropodist

Fully qualified, experienced and  
insured Chiropodist/Podiatrist

- Nail cutting, corns/callus,  
diabetic foot care etc
- Personal home visits, groups  
and residential homes

**Contact Clare:**  
**07757973709**



# DOG GROOMING

**40 YEARS EXPERIENCE**



**SMALL and MEDIUM Dogs**  
**Groomed to Your Request**

**LISKEARD AREA**  
**Inquiries Welcome**

**Call Patricia: 07517 658862**  
<sup>36</sup> **TO YOU OR TO ME**



Domestic Electrical  
Property Maintenance  
Interior & Exterior Work  
Carpentry :: Decking  
Kitchens :: Bathrooms  
Wall & Floor Tiling  
General Plumbing

**MCCARTHY PROPERTY MAINTENANCE**

**Electrical Safety**  
**Register** incorporating  
ELECTSA  ECA  
Certification Ltd

**HIGHLY REGARDED LOCAL BUILDER**  
**COMPETITIVELY PRICED**  
**COVERING THE SOUTH WEST**

Contact Dominic

07968 599 675

01579 362 945

[info@mccarthypropertymaintenance.co.uk](mailto:info@mccarthypropertymaintenance.co.uk)

[www.mccarthypropertymaintenance.co.uk](http://www.mccarthypropertymaintenance.co.uk)

Alphaplas Limited t/a  
**Trims&Windows**

[www.trimsandwindows.co.uk](http://www.trimsandwindows.co.uk)

**Double Glazed uPVC**  
**Windows-Doors-Conservatories**  
'Conservation' vertical sliders a speciality



Supply only to Trade & DIY or  
Full installation registered with

**FENSA inc**  
10yr insurance backed guarantee



Email: [alphaplas@btconnect.com](mailto:alphaplas@btconnect.com)

**01752 840078**

Installation team based in  
Pensilva, Looe & Torpoint

# Owna

Mobile Device and PC repair

07766013897

alex@owna.co.uk



For repair of mashed mobiles, trashed tablets, or poorly PC's visit [www.owna.co.uk](http://www.owna.co.uk) or call Alex for a free quote, no fix no fee

## MARK FITCH CHIMNEY SWEEP

- \* BRUSH & VACUUM
- \* CLEAN, RELIABLE SERVICE
- \* COVERING ALL S.E. CORNWALL
- \* DISCOUNT FOR MULTIPLE CHIMNEYS
- \* COWLS & GUARDS FITTED
- \* STOVES SERVICED



*Call  
Mark on:*

01579 350762  
07773 462643





## Affordable Counselling

**Caring, confidential,  
non-judgemental**

- Increased confidence and self esteem
- Help to cope better at difficult times
- Improved relationships
- Clarify confused thoughts & feelings
- Assertiveness
- Personal insight
- Improved emotional health
- Available for youth and adults

**Isabelle McGarahan BA, PGCE  
Dip in Therapeutic Counselling,  
Member of ACC, DBS cleared**  
**[www.im-counselling.org](http://www.im-counselling.org) email:  
[isabelle@im-counselling.org](mailto:isabelle@im-counselling.org)  
01579 344090/07857326229**



Steve West



## Aerial Services

Installations / Repairs to  
TV Aerials, Satellite Dishes  
and Radio

Customised to your requirements

Wireless network &  
Mobile phone extensions

TV mounting on walls  
Help setting up systems  
and demonstrating.

Phone 01726 212761

Mobile 07941 606 183

e-mail [stevewestaerials@uwclub.net](mailto:stevewestaerials@uwclub.net)

## PENROSS

Rosecraddoc Lodge Holiday Bungalows  
(Between Pensilva & Liskeard)



Ideal for visiting family and friends !  
Refurbished in 2018. Sleeps 4. Electric,  
heating, bedding and towels inc in rent.  
Patio. Free wi-fi. Follow us on Facebook.

Sorry no pets and no smoking.  
Contact Julie Tucker 01579 362221 or  
[penhargetfarm@gmail.com](mailto:penhargetfarm@gmail.com)  
for 15% discount

## NICOLA GREENE

BSc (hons) Podiatry MChs

HPC Registered Chiropodist/Podiatrist

**Home Visit Practice treating all  
your foot care needs:**

- Nail Cutting
- Corns and Calluses
- Thickened Nails
- Dry Cracked Skin
- Verrucae
- Foot Pain
- Diabetic Foot Assessments
- Wound Care

**T: 01579 590027**

**T: 01752 291565**

**M: 07786164205**

**E: [nicki\\_greene@yahoo.com](mailto:nicki_greene@yahoo.com)**

# Group Travel

Enterprise Park, Midway Road, Bodmin  
Cornwall PL31 2FQ. Tel: 01208 77989



**BODMIN M.O.T. CENTRE at Group Travel**

Class 4, 5 and 7. Trade enquiries available upon request. Tel: 01208 77989

## 2018 COACH EXCURSIONS

4<sup>th</sup> AUG - COUNTRYFILE LIVE  
5<sup>th</sup> AUG - FESTIVAL OF BRITISH EVENTING  
21<sup>st</sup> AUG - DARTMOOR ZOO  
25<sup>th</sup> - 26<sup>th</sup> AUG - DORSET STEAM FAIR  
31<sup>st</sup> - 2<sup>nd</sup> SEP - BURGHLEY HORSE TRIALS  
11<sup>th</sup> SEP - WIDECOMBE FAIR  
15<sup>th</sup> SEP - TOBY'S HARVEST FESTIVAL  
27<sup>th</sup> - 1<sup>st</sup> OCT - SHROPSHIRE BY COACH, RAIL & CANAL

3<sup>rd</sup> NOV - BRIDGWATER CARNIVAL  
17<sup>th</sup> NOV - FESTIVAL OF LIGHT @ LONGLEAT  
23<sup>rd</sup> - 26<sup>th</sup> NOV - TURKEY & TINSEL @ BOURNEMOUTH  
24<sup>th</sup> NOV - CLARKS SHOPPING VILLAGE, STREET  
8<sup>th</sup> DEC - BATH CHRISTMAS MARKET  
16<sup>th</sup> DEC - MOUSEHOLE & ANGARRACK LIGHTS  
2019  
26<sup>th</sup> APR - 1<sup>st</sup> MAY - ISLE OF MAN SPRING TOUR

**16 TO 70 SEAT COACHES AVAILABLE FOR PRIVATE HIRE. CORPORATE/ VIP, EVENTS & CONFERENCES, WEDDINGS (CAN INCLUDE STAG & HEN PARTY PACKAGE), HOLIDAY TRANSFERS, FUNERALS, DAYS OUT, GROUP TOURS, GOLFING HOLIDAYS & SPORTING EVENTS.**

FOR BOOKINGS AND A BROCHURE PLEASE CALL

**01208 77989 / 01208 72669**

Website: [grouptravelcoachhire.com](http://grouptravelcoachhire.com) Email: [benneymoon@btinternet.com](mailto:benneymoon@btinternet.com)

# SCOTT BERRIDGE

Complete Property Refurbishment & Building Maintenance

**INTERNAL & EXTERNAL DECORATING**

**PAPER HANGING • TILING SPECIALISTS**

**PLASTERING • PLUMBING • CARPENTRY**

**FENCING • DECKING • PATIOS**

- Local Pensilva • 25 years experience in Cornwall.
- Proper job • Clean & Tidy • Good references
- Trustworthy • Excellent prices. • Free estimates.

**[scottberridge@me.com](mailto:scottberridge@me.com)**

**07889 218 710 (Daytime) 01579 362 006 (evenings)**



INDEPENDENT  
FAMILY  
FUNERAL  
DIRECTORS



Undertaking your individual  
needs with efficiency,  
compassion and care...

Perfect Choice Prepayment  
Funeral Plans from £3249.00

(Prices correct as at 01.01.2013)

01579 362358



Avalennek, Caradon Town,  
Upton Cross, Liskeard  
Cornwall PL14 5AR  
Telephone 01579 363598  
Mobile 07901 538132  
[chrisrounsevell@tiscali.co.uk](mailto:chrisrounsevell@tiscali.co.uk)

## HOG ROAST EQUIPMENT HIRE AND MEAT SUPPLY

Hog Roasts For Those Special Occasions  
Self Catering or Hassle Free Service  
Everything done to your special requirements

**CHRIS ROUNSEVELL**  
TRADITIONAL BUTCHER



## Local Accountant offering fixed fee accounting services

With over 20 years experience, I am a fully qualified, friendly, local accountant

- ✓ Annual Accounts for Sole Traders and Partnerships
- ✓ Book Keeping & Payroll
- ✓ Personal Tax Planning
- ✓ Company Accounts
- ✓ Business Support & Advice

- ✓ Self Assessment tax returns
- ✓ iXBRL tax filing
- ✓ Tax investigation Fees Insurance
- ✓ Company Secretarial work
- ✓ Tax calculations for Sole Traders and Partnerships

Kate Vaughnley FCCA - Chartered Certified Accountant

Website : [www.kvaccountingsolutions.co.uk](http://www.kvaccountingsolutions.co.uk) or Email : [katevaughnley@gmail.com](mailto:katevaughnley@gmail.com)  
Telephone : 01579 364083



## GRAB LORRY HIRE

PLANT HIRE & GROUNDWORKS

07970 270218 | 01579 344402

**MORE COST-EFFECTIVE THAN SKIPS  
FOR SOIL, RUBBLE & GREEN WASTE  
REMOVAL!**

CAN REACH OVER WALLS &  
FENCES FOR COLLECTION  
FROM INACCESSIBLE AREAS

SKIP BAGS AVAILABLE FOR  
SMALL JOBS



**OPEN FOR RETAIL, TRADE & COMMERCIAL ENQUIRIES**

# CORNWALL TILE CENTRE

[www.cornwalltile.com](http://www.cornwalltile.com)

tileitalia

The Natural  
TILE & STONE COMPANY

BESPOKE  
TILE IMPORTS



Tiles & Stone for:

- ◆ Bathrooms & Kitchens
- ◆ Living Areas
- ◆ Conservatories
- ◆ Patios & External Areas
- ◆ Wet Rooms & Spas
- ◆ Swimming Pools
- ◆ All Commercial Applications

- ◆ Local & National Delivery Service
- ◆ Sample Loan Service
- ◆ Free Quotations
- ◆ Free Design Ideas & Planning Advice
- ◆ Trade Enquiries Welcome
- ◆ Wet Room Specialist
- ◆ Full Range of Adhesives & Grouts

### Pensilva Showroom

Open Mon - Thurs 8.30am - 5pm  
Friday 8.30am - 3pm  
Saturday 9.00am - 1pm

### Wadebridge Showroom

Open Mon - Fri 9am - 5pm  
Sat 10am - 3pm



**01579  
362264**

**DISCOUNT TO ALL PUMP READERS**



*The*  
**RACEHORSE  
INN**



*Gastro Pub*

---

**Head Chef Phillip Bradshaw**

---

Ray and Flori welcome you to  
the Racehorse INN

A fine food experience in a convivial  
atmosphere

Our superb Sunday lunch is one to be tried

Open Every Day for Lunch and Dinner

[info@racehorseinn.co.uk](mailto:info@racehorseinn.co.uk)  
[www.racehorseinn.co.uk](http://www.racehorseinn.co.uk)

Take-out: Pizzas & Fish'n'Chips now available



**North Hill Village, Cornwall, PL15 7PG**

**01566 786 916**

## J. H. Simmons

Painting & Decorating



Interior  
&  
Exterior



**No Job Too Small**

References Available

For more information  
Please call John  
01579 362688

7 East Park, Pensilva

## D.J.A. BUILDING SERVICES

ALL ASPECTS OF PROPERTY  
MAINTENANCE BUILDING &  
REFURBISHMENT

- \* Bespoke Furniture and Kitchens
- \* Wardrobes and Bookcases
- \* Garden Sheds, Poultry Houses & Small Animal Shelters
- \* Over 30 years' experience
- \* Fully insured
- \* References available
- \* Free estimates
- \* No VAT

**Call David on 01579  
364050 / 07767662635**

# Westwood Garden Maintenance



*Antony Watts*

*Grass Cutting, Clearance*

*Weeding, Turfing*

*Hedge Cutting*

*Patio Cleaning, Planting*

*Regular Visits / One-off Contracts*

*Residential & Commercial*

**FREE ESTIMATES**

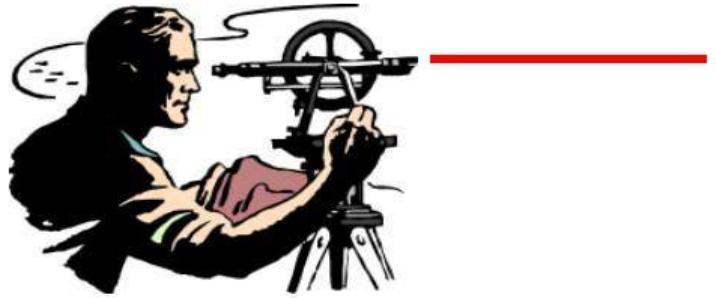
01579 362019 [www.westwoodgm.co.uk](http://www.westwoodgm.co.uk) 07952 094472

## Martin Hoare – Local, Reliable, Competitive



WHEEL DIGGER FOR HIRE  
ALSO AVAILABE 'BREAKER'  
AND NEW CONCRETE  
'CRUSHER BUCKET'  
ALL AT COMPETITIVE RATES

GROUND WORKS  
DRAINAGE  
NEW DRIVEWAYS  
SEPTIC TANKS &  
'SOAK AWAYS' INSTALLED



Phone 01579 363517

or

Mob 07863 291213

LASER LEVEL FOR HIRE  
QUOTES AVAILABLE



# ADVERTISE HERE!

This box for just **£15 per month** including VAT.

**10% discount** for a 12 month order.

i.e. **£11.25 + VAT** per month for 12 months

See the full tariff on page 3

**One thousand copies per month** distributed free of

charge to households in the Parish of St Ive.



**THE HOME OF WOOD**



**OPEN TO THE TRADE & PUBLIC  
FOR ALL YOUR HOME AND GARDEN NEEDS**

**DECKING • FENCE PANELS • OAK FLOORING • STRUCTURAL TIMBER  
GARDEN FURNITURE • GATES • DOORS • CEDAR CLADDING**

**TELEPHONE 01503 240308**

**EMAIL: STACY@WHBOND.CO.UK**

---

**WWW.BONDTIMBER.CO.UK**

**TRERULEFOOT • SALTASH • PL12 5BW**

# Pensilva Stores

**Amazing Value**

**Premier**  
a great deal more from your local store  
**Mon-Sat. 7:00 AM. – 9:30 PM.**  
**Sunday 8:00 AM. – 9:30 PM.**

- ✓ Fantastic Special Offers every month!!! (See store leaflets)
- ✓ Come and Check out our great deals on Wine, Beer and Spirits
- ✓ Local Produce: Homemade Butter and Clotted Cream, Meat from our local butcher
- ✓ Cornish Fresh Fruit and Vegetables
- ✓ Fresh Bread, Pasties and Cakes
- ✓ Take Away Coffee, tea and hot chocolate
- ✓ Newspapers and Magazines, Greeting Cards
- ✓ Paypoint, Lottery

**\* Free to use ATM \***  
**\* Card Payment \***

*Friendly Staff + Service with a Smile !!!*

**Pensilva Stores is a family run business who have been serving local people and visitors for more than 21 years.**

Higher Road, Pensilva, Liskeard, Cornwall PL14 5NQ

Tel: 01579 362547

## MENDOLOGY Garage Door Specialist

- Repairs
- Servicing
- Installations

Out of hours service  
call Dave anytime 07974 442645

**MENDOLOGY** COMMERCIAL DOORS LTD


[www.mendologydoors.co.uk](http://www.mendologydoors.co.uk)

**01579 363760**



# PensilvaCars

01579 363516

- ✓ MOTs Class 4
- ✓ Service
- ✓ Repair
- ✓ Tyres
- ✓ FREE Courtesy Car
- ✓ Car & Van Sales
- ✓ Diagnostics
- ✓ Air Conditioning
- ✓ 

**We have offered a supply, fit & balance of tyre service for 10 years at competitive prices.**

**Most of our tyres can be supplied the same day.**

**LOCAL RECOVERY £45.00**

**[www.pensilvacars.co.uk](http://www.pensilvacars.co.uk)**

**[pensilvacars@hotmail.co.uk](mailto:pensilvacars@hotmail.co.uk)**

We can service and repair your car to manufacturer specification, keeping your dealer warranty without main dealer expense.





# **KEITH RICHARDS**

## **Motor Body Repair Specialists**

A family run business with fully equipped & maintained workshops & a focus on  
Customer Care

- ◇ **Motor Body Repair Specialist**
- ◇ **Mechanical Repairs**
- ◇ **Servicing to All Makes & Models**
- ◇ **Computer 4 Wheel Alignment**
- ◇ **24 Hour Recovery Service**
- ◇ **Renovations & Re-sprays**
- ◇ **Member of RMI (Retail Motor Industry Federation)**
- ◇ **Latest Diagnostics (including specialists for VW, Audi, Seat, Skoda & Vauxhall)**

With over 30 years' experience we aim to provide you with:- Value for Money -  
Friendly Service - Professional Approach - Expert Advice that you Can Trust  
**(Visit our website for more details)**

Pensilva Industrial Estate, St Ive Road, Pensilva, Liskeard, Cornwall PL14 5RE

Tel: 01579 362593

Email: [keith@keithrichardsmotorbody.co.uk](mailto:keith@keithrichardsmotorbody.co.uk)

Fax: 01579 363194

Website: [www.keithrichardsmotorbody.co.uk](http://www.keithrichardsmotorbody.co.uk)

Wm. Newham & Sons Est. 1835

Proprietor Robbie Savill AWCB

## CHIMNEY SWEEPS & BLACKSMITHS



CHIMNEY SWEEPING

BIRD GUARDS, COWLS & POTS FITTED

CCTV INSPECTIONS & SURVEYS

STACK REPAIRS & REBUILDS

RIGID STEEL SYSTEMS ERECTED

STAINLESS STEEL and PUMPED CONCRETE  
CHIMNEY LINING

STOVES SUPPLIED, INSTALLED & REPAIRED

FIREPLACE ALTERATIONS & RENOVATIONS

FULL RANGE OF FIREPLACE FURNITURE  
made to order

**01579 347777**

need somewhere to stay ?  
between homes ?  
family/friends visiting ?



ideal for Pensilva  
& St.Ive

please call Jackie on  
01579 362216

# J.J.CHILD

## PLUMBING AND HEATING ENGINEER

### OIL AND GAS APPLIANCE SERVICE , REPAIR AND BREAKDOWNS

### LANDLORD'S CERTIFICATES

OVER 25 YEARS EXPERIENCE  
CALL JOHN ON 01579 362336  
MOBILE 07837921086



502322

# Bargain Corner Free Ads up to £50

Ads are free for items up to £50. £5 charge for items over £50. Please ring the Parish Office on **01579 363096** or leave a note at Millennium House reception or email **parishpump@btconnect.com**.

**\*\*\*Please let us know when your item has sold\*\*\***

**Baby carrier** back pack - Bush Baby Lite. Excellent condition. **£40. 01579 363525.**

**4 frame** honey extractor (plastic). Good order. **£45.**

**Carpet shampooer £6**

**Dyson hoover £5**

**01579 320401.**

**AURA 3 Tent**, colour Green; only used for 8 nights camping. Bought for £179.99 but offering it now for **£100** as I have had to give up camping.

Also the **matching Porch Extension** - BRAND NEW, never unpacked since buying for £99.99, but now for sale at **£50**. Real bargains. If you're interested in both, please make me a reasonable offer as I can no longer make use of them. **01579 364574** (Pensilva)

**WANTED. Chicken coop** in reasonable condition. Large enough for three hens. **01579 363833**

Wood-framed **mirror** 2'6" x 3'7". **£10.**

**Bench saw £15.**

**01579 363812**

**Car Ramp** 6' long. Folds in half. Unused. Good for loading mobility cars. **£49.**

**01579 384222 or 07828 016665.**

**Mobility Walker** Hardly used. Cost about £80 new from Argos. Will sell for **£40**

**18 Demijohns £1 each. 01579 362001**

Child's garden metal **swing & accessories. £15. 01579 362085**

**WELMAR Piano.** Upright, 2 pedals, 52 keys, Length 55", height 41". Bought from and regularly tuned by Evan Hatch (Pianos) at Launceston. Now **£600.**

**01579 363010**

**TOSHIBA Regza 32" TV.** Digital, HD ready 1080p, 3xHDMI, 2 x Scart. Freeview Ready. Full Instructions & remote controller. **£50. 01579 362607**

**GRACO TRAVEL COT** in very good condition, Multi coloured base, (blue, red, yellow and green squares). **£10**

**01579 382772**

Very Comfortable 3 seater Dark Red **Leather Settee** in Good Condition. **£50** ono. (Buyer Collects)

Wooden **Sewing Box** in Good Condition with five sliding compartments, **£15** ono  
**3 Cobblers Shoes Irons**, including a rare ladies shoe iron all in VGC. For use or ornaments. **£30.**

**Binoculars** 1 pair Vesper non-reflective titanic coated binoculars/optics, super field 7 x 50 with leather case **£25.**

Bosch Universal 300mm **cutting disc** for bricks, blocks and concrete, only used for a few minutes. In original packaging. **£10.**

Youngman Space-maker, **former Loft Ladder**, 9 runs, 9ft high x 1ft wide **£15.**

1 section of Aluminium **extension ladder** 12 runs, 11ft high x 13" wide **£10.**

1 section of Aluminium **extension ladder**, 13 runs, 10ft high x 13" wide **£10.**

**01579 384658**

**Lec Fridge.** Excellent working order. **£50**  
Can deliver Pensilva area. **01579 363791**

**Sony Home Cinema System** CD/DVD/  
Tuner/Amplifier with 5 small wired  
speakers, sub-woofer and remote control.  
**£50. 07841 717913.**

Four wheel disability walker with seat and  
brakes. **£35.**  
Three wheel disability walker with bag and  
brakes. **£30. 01579 362417**

Dremel Moto Saw. As new condition  
**scroll saw/fret saw.** Ideal for hobbyists.  
Own, plastic carry case but is missing  
vacuum cleaner adapter & instruction  
booklet. Instructions available on line. **£40.**  
**01579 362207** (Pensilva)

Superdry clothing **2 windcheaters**, black  
with fleece lining. excellent condition **£20**  
**each** ono **2 hoodies**, 1 purple, 1 navy,  
good condition **£15** each or ono  
Black sherpa lined **windcheater**, excellent  
condition **£30** ono  
All sizes XS & S  
Jack Wills **wool sweater** size 8 and  
Johnnie B red Sherpa lined hoodie age 11-  
12 **£10** each ono  
Photos can be emailed. **07724 111132**

Berry's **sideboard.** Circa 1960s. 171cm  
high x 44.5cm deep x 78cm high. 2  
cupboards with one reversible door. 4  
drawers, one felt cutlery drawer. **£50** ono.  
Unusual iridescent paper **side lamp.**  
Approx 31" high on small base. **£5.**  
**Buyer collects. 01579 345783.**

Brand new, never worn, **motor bike**  
**helmet**, with visor and inside sun visor,  
red, grey & white. Size medium. Paid £90,  
will accept **£30** or nearest offer.  
**07980 284002**

**Reikie or Massage Table etc.** Very good  
condition. (Fold away). **£35.**  
Pensilva area. **01579 363192**

**Automatic guitar tuner** (quick tune)  
includes electronic pitchpipe.v.g.c as only  
used a few times/with box. **£5.**

**Inflatable punch tower**, foot pump  
included, (160cm h). New still in box. **£5.**

**Ladies motorbike jacket** Rayven, size  
12, black/pink, as new. **£50.**

**Men's black leather bike jacket**, 52L, &  
trousers, 40L, TARCA, vgc. **£50** the set.

**Baby bouncer** for up to 6mths. East  
coast, light fawn/with white polka dots  
design material, vgc, **£10.**

**07743 416676** (Minions area)

Folding **3-wheel walker** with brakes and  
bag. Ideal mobility aid. Suitable indoor/  
outdoor. Hardly used. **£50. 01579 363081.**

**Nest of 3 tables** yew wood and glass top.  
Good condition **£45.**

**3ft Mattress** in clean condition. Ex quality.  
**£50.**

**3ft Divan** to match mattress. VGC. **£40.**

**3ft Pine headboard** very attractive **£20.**

**01579 343990** or **07553 928333**

Targus Notepac plus classic 16" **laptop**  
**case. Black £5.**

**Leather black briefcase** 17½" x 12½" x  
4". **£10 o.n.o.**

Both in good condition. **01579 362846**

**Shires Show jacket.** Black with purple  
Collar. Only been worn a couple of times.  
Ex. Con. **£25.**

**01579 343992** or **07810 178802**

**Homedics** Back Massager. Full lumbar or  
Lower Lumbar only options. Plus variable  
intensity. Fits any armchair. Can be seen  
working. Only used twice. Great Xmas  
present. **£50** ono.

**07973 510693** St Ive.

**WANTED to buy**, a small piece of non-  
development, flat, accessible **land** within 5  
miles of St Ive. Any type of land  
considered.

**Tel 01579 384658.**

## What's on in St Ive Parish ?

WHAT'S ON	WHEN	CONTACT DETAILS
<b>MILLENNIUM HOUSE</b>		
Aikido	Thursday 7:00pm	
Antique & Collectors Fair	4th Sunday Monthly 10:00 - 4:00	
Badminton Club	Mon & Tues 7:30pm. Fr. 8.00pm	01579 363594 (Carol & Nigel)
Book Exchange	Daily	01579 363096
Breath of Air	Monday 12.30pm - 2.30pm	01579 345989 Pauline
Country Dancing	Alternate Thursdays 8.00 - 10.00pm	01579 382402 Ray Buckingham
Fitness Pilates	Monday 9:30 - 10:30am	07850 473428 (Dianne)
Ladies Netball	Friday 09:15 - 10:15am	07985 387472
Pensioners Lunches	Tuesday 12:00 - 2:00pm	01579 363096
Short Mat Bowls	Thursday 7:00pm	01579 208528
Village History Group	Last Monday Monthly 7:30pm	01579 208754 (Angus)
Wildlife Group	Quarterly	01579 362539 ( Hilary)
Woman's Institute	2nd Wed Monthly 7:15pm	01579 363718 (Frances Tucker)
Yoga	Wednesday 7:00pm	01579 344464
Zumba Fitness Classes	Wednesday 7:00 - 8:00pm	01579 363096 (Millennium House)
<b>PENSILVA VILLAGE HALL</b>		
Brownies	Monday 4:00 - 6:00pm	01579 362239 Martha Oliver
Pensilva Wednesday Club	Wednesday 2:30pm	01579 363221 Mrs Jean Conner
Pensilva Snooker Club	Wed 7:00pm + Various times	01579 362091 Phillip Bond
Guides	Thursday 6:00 - 8:00pm	01579 363228 Caroline Hambly
MIMS	Friday 1.00 - 3.00pm	01579 343702 (Chris)
Rainbows	Friday 4:00 - 5:00pm	01579 362091 Lynne Bond
Rangers	For Info	01579 362982 Kirsty Oliver
<b>PENSILVA PRE-SCHOOL</b>		
Pensilva Pre-School	Monday-Fridays 9:00 - 3:15 (session times available)	07890 023924 Mrs Suzanne Kinsman (Manager)
Tiny Tots Toddler group	Friday 9:15 - 11:15am	07890 023924 Mrs Suzanne Kinsman (Manager)

## ST IVE INSTITUTE

Gardening Club	1st Monday monthly 7:30pm	01579 382762
St Ive Snooker Club	Monday & Thursday 7:00pm	01579 382315 R Bunkum
Art & Craft Group	Tuesday 1:00 - 5:00pm	01579 362216 (Jackie)
Post Office	Wednesday 10:30 - 11:30	
Coffee Morning	Wednesday 10:30 - 12:00	
St. Ive Singing Group	Thursday 4.00 - 5:30pm	01579 382341 (Clare)

**St Ive Institute available for hire, £3.50 per hour.** This includes the use of the kitchen & electric (excluding wall heaters, which are on a £1 coin meter)

**Contact Sue Sedgewick on 01579 383291**

Hall meetings will now be held quarterly on the second Tuesday of the month in January, April (includes AGM), July and October.

## ST IVE & DISTRICT GARDENING ASSOCIATION

**Meetings in St Ive Village Hall 1st Monday in the month at 7.30pm**

**Mon Jul 2** A visit to **Lynhaven**, Bealswood Close, Gunnislake PL18 9DE.  
Assemble in St Ive car park to leave at 7pm

**Mon Aug 6** A visit to **Troutbeck plants and nursery**, Troutbeck Farm, St Ive, PL14 3ND Assemble in St Ive car park to leave at 7.15pm

**Sat 1<sup>st</sup> Sep** **St Ive Village Show** with classes for your fruit, veg & flowers.

*Visitors and new members are always welcome to join us.*

## ART AND CRAFT GROUP

We are a small friendly informal group who enjoy doing art and craft. If you paint or do any type of craftwork and would like to join us we'd love to welcome you.

There is no 'teaching' but help/advice is always forthcoming!

We meet at St. Ive Institute Hall from 1.00pm to 5.00pm Tuesday afternoons.

Only £3.00 for the afternoon plus 50p for tea/coffee and biccies.

If you are interested please give Jackie a call on **01579 362216**.

We look forward to meeting you.

# Pensilva Post Office

Located through the Café on the 1<sup>st</sup> floor of Millennium House



## Opening times:

Tuesday	-	9am to 1pm
Wednesday	-	9am to 12 noon
Friday	-	9am to 12 noon

## ***THE MEL BAR*** ***MILLENNIUM HOUSE*** ***Licensed Free House***

**GUEST ALES - LAGERS - CIDERS - WINES - SPIRITS**

### **Opening Hours**

Mon - Thu	-	5 pm to 11 pm
Fridays	-	3 pm to 11 pm
Saturday	-	12 noon to 11 pm
Sunday	-	12 noon to 11 pm

**01579 363096**



### **NEWS from *the MEL***

England's World Cup matches and all the other big games will continue to be shown live in the bar or on the big screen in the function room.