

THE PARISH PUMP



June 2018
Edition 439



The Newsletter for the Parish of St Ives



Jeremy Vine and Vickie Michelle present the Soldiering On Award for Family Values to Tony and Liz Connell and daughter Nikki Markham, from Merryhue Farm. (Full story on page 6)

Disclaimer

The articles appearing in this magazine do not necessarily reflect the views of the Parish Council nor of the Parish Pump Editor.

Parish Councillors Telephone List

Peter Haimes (chair)	01579 362459	Alan Moss (vice-chair)	01579 362064
James Bruce	07411 192645	Marlene Carr	01579 362919
Martin Corney	01579 382450	Angie Haimes	01579 362459
Rosemary Farley	01579 384810	Tony Hodson	07973 536964
Nigel Libby	07968 891814	Kath Parkes	01579 362005
Ivor Vaughan	07979 934604	Craig Vaughnley	01579 364083
Sharon Daw (Cornwall Councillor) 07837 379305 slash.dash.daw@gmail.com			

Meetings of St Ive Parish Council

2nd Monday monthly: Parish Council Meeting, alternating between St Ive Village Hall and Millennium House (please refer to notice boards for the agenda showing start time and venue each month). Any changes to the regular dates (i.e. Bank Holidays etc.) will be publicised accordingly.

4th Tuesday Monthly: Parish Council Planning Committee Meeting, 7 pm at Millennium House Pensilva, followed by the Parish Council Finance & Administration Committee Meeting commencing at 7.30 in the same venue.

Date of Next Parish Council Meeting

Monday 11th June 2018 at 7:30pm at Pensilva



Devon & Cornwall Police
Building safer communities together



101

Minicom 18001 101

Police Community Neighbourhood Office

Your Community Support Officer is PCSO Bex STEED 30169.

email: CIOSNBMLiskeard@devonandcornwall.pnn.police.uk

To report a crime call 101 or go to www.devon-cornwall.police.uk

In an emergency call 999

Contact details for St. Ive Parish Council and for Millennium House

Address for correspondence: Millennium House, Century Square, Pensilva PL14 5NF

General Parish matters should be raised initially with the Parish Clerk, Jenny Hoskin, who will present them to the Parish Council.

Telephone: 01579 363096, email: stiveparish@btconnect.com

For accounts matters for the Parish and for Millennium House contact John Body, Finance Officer: 01579 363096, email: millenniumhouseadmin@btconnect.com

Millennium House enquiries and reservations: 01579 363096

email: millenniumhouse@btconnect.com.

On the web: Millennium House Website: www.cornwallvenue.com

Parish website: st-ive-parishcouncil.gov.uk Facebook: facebook.com/stiveparishcouncil

Parish Pump Information and Contact Details

To contact the editor please email: parishpump@btconnect.com

or phone the Parish office: **01579 363096**.

Hardcopy submissions by post or by hand to the Parish office, Millennium House.

Softcopy submissions: By email to the editor in MS Word, MS Publisher, pdf, Tiff or jpeg. Please use A4 pages and minimum 16 point font as the Pump is initially produced in A4 size and reduced to an A5 booklet at the printing stage. If in doubt please contact the editor.

Current Advertising Prices including VAT at 20%

Per issue: Quarter Page £7.50 Half Page £15.00 Full Page £25.00

10% discount for 12 months paid in advance.

Bargain Corner free ads by email to the editor or drop off at the Parish Office.

Deadline for the Parish Pump is STRICTLY 15th of every month

THE MEL BAR

Relax and wind down
at the Mel Bar, Millennium House



From the Editor

Unusually for me, I find that I have nothing to say, which is just as well because I also find that I have no time in which to say it. The bank holiday has messed up my calculations and I'm rushing to get this month's edition off to the printers in time. So feel free to supply your own words about what you think I might have said, or better still, about what I ought to have said!

Have fun! Joe

FIFA WORLD CUP

Begins June 14th.
All of England's games
will be shown live at
Millennium House,
Pensilva, in the bar or on
the big screen in the
function room.



Millennium House Opening Hours

Reception

9am till 2.30pm Monday to Friday

Community Coffee Shop

See separate notice on next page

Bar

5pm till 11pm Monday to Thursday

3pm till 11pm Friday

12am till 11pm Saturday and Sunday

If no-one is available please leave a message in our **letter box** at the front of the building or on our answer phone by calling **01579 363096**.

JOB VACANCIES WITH ST.IVE PARISH COUNCIL.

These are all paid vacancies.

Admin Assistant:-

We are looking for an Admin. Assistant to the Parish Clerk and Finance Officer. Must be used to working with computers and money.

Hours:- Part-time 9 hours a week spread over 3 days.

To apply:- Application forms available from Millennium House. Telephone 01579 363096. Closing date for applications:- 14th June 2018.

Relief Bar Person.

We are looking for a relief bar person to cover sick leave, holidays and functions. This person must have experience of bar and cellar work.

To apply:- Application forms available from Millennium House. Telephone 01579 363096. Closing date for applications is 14th June 2018.

Evening Receptionists.

We are looking for 1 or more receptionists to cover three evenings a week in Millennium House. This will be to answer phone and enquiries, take payment from users, and assist bar person in securing building at shut down. Hours approximately 4 hours an evening.

Applications forms available from Millennium House. Telephone 01579 363096.

Closing date for applications 14th June 2018.

AN OPPORTUNITY FOR SELF-EMPLOYED CATERERS

We are looking for caterers who could cater functions at Millennium House for our patrons. This could be for parties, working lunches, funerals etc.

If you are interested, please send a business plan and contact details to:-
The Parish Clerk, Millennium House, Century Square, Pensilva, Liskeard
PL14 5NF.

Received from our Cornwall Councillor, Sharon Dawe:

Cornwall second homes: 13,406 let out and owner holidays registered on business and 7,987 holiday letsnow you can have your own opinion but that's 21,393 homes that are not housing local people ... local people who do the very jobs all year around that need homes... we need balance not holiday lets????

National Award for local family

A local family has won the National Soldiering On Award for Family Values for their voluntary work supporting Armed Forces veterans and vulnerable adults and young people at Battling On, which is based at Merryhue Farm in our Parish. At a star-studded event Nikki Markham and parents Tony and Liz Connell received the Family Values award from Jeremy Vine and Vickie Michelle.

Battling On was founded by Nikki, who recognised that there were veterans within the community who need support transitioning from the services into civilian life. Realising that veterans made wonderful role models, Nikki designed a programme to train veterans to work with vulnerable young people. With support from Nicki's parents and her sister, Katie Connell, Battling On grew into a multi award winning organisation. On average Battling On helps between 280-350 people a year, providing innovative solutions to complex social programmes. These include:

Inspiring Lives trains veterans as mentors and instructors.

Together We Can Succeed: veterans support young disadvantaged people to re-engage through volunteering (normally 5000 per year) and to learn vocational skills.

Eco-therapy: adults and young people learn strategies and techniques to improve mental health and re-engage.

Creative Aging: addresses the issue of the rural isolation for the elderly.

Combat Cooking: teaches disadvantaged young people to cook healthy meals, on a budget, and on a WW1 Field Kitchen!

Inspiring Confidence Through Animals: Using animal intervention techniques, young people with problems gain confidence and learn to control their emotions.

Emotional Resilience Programme: veterans support young people with low self-esteem to become more emotionally resilient and confident.

We hope to hear more about these schemes in future editions!

Battling On is a multi-award winning organisation that was awarded the Queens Award for Voluntary Services, the MBE for the Third Sector. <https://www.battling-on.com/>

COMMUNITY COFFEE SHOP

in MILLENNIUM HOUSE PENSILVA

THE COFFEE SHOP IS NOW OPEN AT THE FOLLOWING TIMES:

MONDAYS	10.00am - 1.00pm
TUESDAYS	9.00am - 1.00pm
WEDNESDAYS	9.00am - 12 noon
FRIDAYS	9.00am - 12 noon

Pensioners Lunch

2 Course Meal plus Tea or Coffee
Only £5.50

Every Tuesday here at Millennium House
Speak to our reception or
telephone Millennium House on **01579 363096**



So why not join us for Good
Food and Good Company, all on
the day you collect your
pension?

MOBILE LIBRARY

The County Mobile Library visits our area once a month on Fridays of "Week 3" (NOTE: not necessarily the 3rd Friday of the month).



Next visits: 8th Jun, 6th Jul.

Stops at:

The Victoria Inn, Pensilva at 10.25 to 10.45am;

Quethiock bus stop. 11.00 to 11.20am.

Parish Council Chairman's Column

Well the 20th anniversary party for Millennium House was a great success and it was nice to see so many of the community enjoying the day. The new library was also opened in the room next to the gym, so the books that were in reception are now upstairs, along with jigsaws and in the future, dvd's etc.

Age U.K. have said that Millennium House has been selected as a place to base an electric car and charging point for the benefit of the community, with Age U.K. volunteer drivers for hospital/doctor appointments etc. More details will be given later.

It is intended to refurbish the Cemetery shed and install a water butt to provide a water supply, then the existing water supply can be removed, with a resultant saving in water rates. We would also like to introduce a wild flower border around the edge of the cemetery. We would welcome your views on this.

By the time you are reading this carnival will be fast approaching, so don't forget applications for carnival King and Queen and also entries for the scarecrow competition (lets have lots this year).

A big thankyou must go out again to the W.I. for their litter picking work, which does a great deal to keep the Parish tidy and a more pleasant place to walk around. Well Done.

As a final note, with the better weather upon us, please enjoy the sun and B.B.Q.s etc but please keep music to a reasonable volume, not everyone enjoys your taste.

Pete Haines.

Millennium House Anniversary - Thanks

A big thank you to the Parish Council from Pensilva W.I for all their hard work in organizing the 20 years of Millennium House event . It was a lovely afternoon and very much enjoyed by us all.

Pensilva WI May meeting

President Francis Tucker welcomed members and said that due to our speaker Kim Sudell being unwell and unable to attend, we would be having something a little different later. More on that come!

Following the business meeting, everybody separated into tables of eight and bingo cards were distributed. Verna took on the job of bingo caller, which she did admirably. The ladies helped out on occasions with the bingo rhyming phrases, although Verna had her own, much to the merriment of everybody. Prizes were given for a line, 2 lines and a full house. Verna was given a rousing thank-you by the members.

Dates for your diary:

7/8/9th June – Royal Cornwall Show

Tuesday 19th June – Picnic & croquet on the lawn at Cotehele

Saturday 30th June – Summer outing to Heligan Gardens

Saturday 7th July – Pensilva Gala Day

Saturday 7th July – ‘The Magic of the Beatles’ at Sterts. 7.30pm

Monday 30th July – ‘Oliver’ at Sterts

The schedules for the Horticultural Show on Saturday 9th September are now available at Millennium House.

Competitions: Flower of the month 1st Janet Butcher, 2nd Francis Tucker, 3rd Rachael Palmer. Monthly competition: ‘an old coin’ 1st Kay Price, 2nd Trish Thomas, 3rd Sue Turpin.

There were no birthdays this month.

Next meeting: Wednesday 13th June when Brian Oldham will tell historic tales from behind Liskeard buildings. We meet at Millennium House, Pensilva at 7.15pm. All welcome, why not come along – a warm welcome awaits you.

THE Growing Project

PENSILVA

May has been the month that our crops have finally taken off after the perfect combination of rain and sunshine!

Our beautiful Rainbow chard, our spring staple, has very nearly finished and is being replaced by tomatoes and courgettes, with cucumbers, peppers and aubergines ready to shortly follow.

As I write this we were harvesting our first broad beans of the year, however when you read the article in roughly 14 days, we will be on our third week of picking them. Our peas are very nearly ready to pick and as you read this on the 1st of June we expect to be packing them into veg boxes and have some out on our purple stall.

After the wet April we have had quite a battle with the local rodent and slug population who seem to like our crops as much as we do! But with the aid of eggshells (keep them coming) to deter slugs and mint plants and used tea bags on our vegetable beds to persuade the local mouse population to hop it we are getting there.

To remind you all that our volunteer days are on Wednesday 10 – 2pm and Thursday 12-3pm, we also have jobs that need doing in the evenings if anyone would be available.

Thank you very much to all those in our community that have donated wood, pallets, compost bins and tools to us, but we still do need more. Thank you to our regular vegetable box customers and those that buy from our roadside stalls for your support, if you are not yet buying our organic vegetables there are 2 ways you can buy from us - you can order a vegetable box and have it delivered to your door weekly or fortnightly. We offer a regular or large box and also a fruit box. You can also shop at our purple roadside stalls where you can find a variety of veg grown on our land and also from Riverford, at very competitive prices .

Our contact details are: Email growingprojectpensilva@gmail.com

Phone: 07398 828783 for veg box enquiries

Phone: 07854 353865 for admin / board secretary

Received from Pam Carter. Fly tipping on unmade roads.

Please do not empty left over cement and builders rubble into unmade roads in the Parish. It is bad for the environment, especially when leaving plastic and other rubbish amongst it. It is considered fly-tipping and is illegal.

Johnny Cowling Evening - THANKS

Thank you to everybody who came and supported the Johnny Cowling evening on May 11th for the Children's Hospice South West. Also for all the lovely gifts and donations we received. We raised a fantastic sum making a grand total of £17,290 raised for the hospice over seven years.

Thank you

Pat Mitchell



The Annual General Meeting of PENSILVA HEALTH AND FITNESS ASSOCIATION LTD

also known as *All Being Well*

will be held on Wednesday, June 6th, 2018 at
7:30pm in Millennium House, Pensilva.

The agenda is on display in the gym. All
members are encouraged to attend. Members of
the general public are welcome.

News from Pensilva Primary School

This half term, the school topic is “Water” and there are some very interesting activities. In Tiddy class, the children had great fun observing a selection of fish (which they had on loan from Pre-School). They enjoyed looking at the fish, touching them and even smelling them. A fabulous range of descriptive words about fish was collated from their ideas.



Following this experience, the children were inspired to be fishing pirates catching fish from the pirate ship in our outside area.

Also linked to our Water theme, Warleggan class have been rehearsing **The Tempest** and filming their performance. (They are the only ones in school who have been hoping for rain!)

St Ive and District Gardening Association

Our gardening club has been to many gardens over the years and Linda Mavin's, in North Sillaton, which we visited in May was one of the best, full of interest and character. Developed from a paddock over the last thirty years, the numerous splendid specimen trees are underplanted with a wide variety of colourful shrubs and perennials. Numerous paths wind through the garden from the series of ponds down to the house. The evening sunshine added to the beauty and tranquillity.

Our next outing will be to Anvil Cottage in South Hill on 4th June leaving St Ive car park at 7:10pm.

Supporting Guiding & Scouting Activities in Pensilva **200 CLUB** Draw Results for **April**

1st No. 5 Miss. B. Elliott	2nd No 78 Mr M. Green	3rd No 147 Mrs T Brice
---	--	---

Thank you for your support



As part of the Keep Britain Tidy campaign, these WI ladies did a litter pick around Pensilva village and playing fields on a sunny morning in May.

PENSILVA CARNIVAL SCARECROW COMPETITION ENTRY FORM

CARNIVAL IS ON SATURDAY 7TH JULY 2018

Scarecrow must be on display from Sunday 1st July to end of Carnival Day.

Judging will take place during the week commencing Monday 2nd July, and the winner will be announced on Carnival Day. Judge's decision is final.

Name: _____

Address: _____

Postcode: _____ - _____

Telephone: _____

Email: _____



Ruth and Colleen's Monthly

BINGO

At Millennium House

on Tuesday 5th June

Then 3rd July

Eyes down at 7:30pm

Over 18's only

£££ CASH PRIZES £££

QUIZZES AT MILLENNIUM HOUSE

NEXT QUIZ: SATURDAY JUNE 9TH, 7:30PM

Then: Tuesday July 3rd, (Pensilva Carnival Week),

September 1st, October 13th, December 8th

All at 7:30pm

Organised by and raising funds for

All Being Well

Improving the health of our community



Cartwheels Craft Centre Summer Fair

Saturday 16th June 10am - 4pm

- Locally produced quality arts and crafts on sale.
- Stands from The Felted Sheep, Loveny Willow, Cornish Pebbles, Clarabelle Crafts, Caradon Country Seat, Rock Cottage Pottery, Lily Burl, Penny O'Connor, Sampford Alpacas and many more.
- Troutbeck Plants will be here with their large selection of excellent quality plants, bedding, shrubs, roses, perennials, herbs, hedging and hanging baskets.
- Visit Cartwheels shop for all your patchwork and quilting supplies as well as cushions, bags, wall hangings and gifts.
- Refreshments, disabled access and facilities with ample free off road parking.

Penhawger Farm, Merrymeet, Liskeard, PL143LW

Tel: 01579 343675/340026 or visit
www.cartwheelscraftcentre.co.uk



Pensilva W.I trip to Heligan Gardens.

Saturday 30th June.

Leaving Millennium House at 9.30am.

Picking up from Glen Park and the Shop.

Cost (includes coach and entry to Heligan):

£16 senior. £20.80 under 65's. £11.50 Children.

To book phone Jean 362531, Cherry 363863,

Verna 363674 or any W.I. member.

Also picking up from Moorland View and Webbs, Liskeard.

CHARITY MUSIC NIGHT
WITH
THE LOST COUSINS

MILLENNIUM HOUSE

PENSILVA

FRIDAY 29TH JUNE 2018

8.00PM

A mix of jazz, folk, indie, pop, country...and anything else we can think of from Bruce Springsteen to Paramore, Cheryl Crow to Prince.

FREE ENTRY

DONATION BUCKET

This event is being organised by Nick Horler to raise funds and awareness of **Motor Neurone Disease**

In July a group of family and friends are taking on The Jurassic Coast Challenge a 100Km walk over 2 days in memory of Jeremy Durrant, who lost his fight to this dreadful disease.

All donations will go to MNDA Cornwall Branch



mnnda
motor neurone disease
association

THE BURRATON BOYS and QUETHIOCK SCHOOL CHOIR

Saturday 23rd June at 7.30 pm

in Pensilva School

Light Supper after

In aid of Pensilva Church

Tickets £7 on the door.

PENSILVA WEDNESDAY CLUB R.V.S

**Meet in Pensilva Village Hall at 2.30.p.m. on alternate
Wednesdays**

**All Adults welcome to join - £1 per meeting –
Refreshments - Various activities - Entertainment -
Coach Trips - Raffle**

Wed. 13th June - Coach Trip to Trago, Newton Abbot

Leave Millennium House 10.00 am.

Information: please contact Jane Mann 01579 362960

St Ive Church Produce Market

Every 1st Friday 10:30 to 1:30pm

Homemade Cakes Fresh Vegetables

Jams Pickles Local made Pasties

Bric-a-brac and much more - also

Home Reared Traditional Meat

Pork, Beef, Chicken, Dry Cured Bacon, Sausages from

Trehill Farm Produce

Cooked Lunch available from 11:30 only £4.50

PENSILVA CARNIVAL DAY

7th July 2018
Programme of Events

- 12:00** **Fancy dress registration:**
-12:30 **50p entry per person**
 5 and under, 6-11,12+, pairs,
 groups, and floats.
- 12:30** **Fancy dress judging and**
 presentations.
- 13:00** **Parade begins.**
- 13:30** **Dog show:**
 £1 entry per class,
 details on day
- 14:00** **Baby Show (free entry):**
 0-6 months, 7-12, 13-18.
- 14:30** **Tavistock twirlers**
- 15:45** **Raffle draw**
- 16:15** **It's a Knockout!**
- 19:30** **Disco @ Millennium House**
till late **(£1 entry)**

PENSILVA CARNIVAL WEEK 2018

01

JUL

WALKING TREASURE HUNT (PRESCHOOL)
SUNDAY MORNING

01

JUL

CAR TREASURE HUNT & AFTERNOON TEA (PSA)
SUNDAY AFTERNOON

02

JUL

BOARD GAMES & ADULTS-ONLY EUCHRE (PSA)
MONDAY 7:30PM

03

JUL

QUIZ NIGHT (ALL BEING WELL)
TUESDAY 7:30PM

04

JUL

MOVIE NIGHT (PSA)
WEDNESDAY

05

JUL

BINGO (BRITISH HEART FOUNDATION)
THURSDAY, DOORS AT 7:30PM

06

JUL

DONKEY DERBY (FOOTBALL CLUB)
FRIDAY 7:30PM

MILLENNIUM HOUSE EVENTS COMMITTEE PRESENTS

JULY
7th 2018

PENSILVA CARNIVAL



**SCREECH OWL SANCTUARY
FANCY DRESS
CARNIVAL PROCESSION
CAR BOOT SALE
EVENING DISCO**

**BBQ
ZORBING
DOG SHOW
VINTAGE CARS
AND MORE!**

**MILLENNIUM HOUSE, PENSILVA,
PL14-5NF**

7th July 2018 at PENSILVA CARNIVAL

**Be
there!**

FAMILY DOG SHOW

£1 entry per class

**Rosettes to 4th place
in each class.**

**Judge Louise England
Littlewood**

**Best Puppy under 12
months**

**Fancy dress dog and
handler**

Fastest biscuit eater

Prettiest bitch

Handsome male

Scruffiest dog

Best trick

Best in show

For more info call Charlotte on 078 6507 3157

Sponsored by Fern Lodge Boarding Kennels and Cattery



ADULTS ONLY
EUCHRE
NIGHT
MONDAY 2ND JULY
AT THE MEL BAR, MILLENNIUM HOUSE



Organized by Pensilva School Association. Board Games will also be available in the function room.

PENSILVA MEMORY CAFE

DO YOU HAVE MEMORY PROBLEMS OR CARE FOR SOMEONE WHO DOES? WHETHER IT'S MILD, MODERATE OR SEVERE YOU CAN SOMETIMES FEEL A BIT ISOLATED AND ALONE.



DON'T BE LONELY. KEEP SMILING. THERE ARE MANY OTHERS LIVING WITH THIS CONDITION.

COME AND JOIN US ONCE A MONTH FOR SOME FUN AND LAUGHTER, MUSIC & REMINISCENCES.

WE MEET ON THE FOURTH THURSDAY OF EACH MONTH AT ST JOHN'S CHURCH FROM 2PM – 4PM.

WE ALSO SUPPLY TEA/COFFEE AND CAKES.

DONATIONS OF £1 PER PERSON APPRECIATED FOR MORE INFO PHONE PAT 01579 363461 OR CAROLYN 01579 362698

ST IVE SINGING GROUP...



is on summer break from June until September 6th. You can hear us at the St Ive Show, Saturday September 1st. For more info call Clare on 01579

PENSILVA GROUP MEETINGS NOW AT 5:30pm AS WELL AS 7:30pm

be inspired
with
**Slimming
World**



MONDAY PENSILVA 5:30 and 7:30 pm
The Millennium Centre, Princess Road,
Pensilva, Liskeard PL14 5NF.
Tel: Hayley **07966 370233**

TUESDAY LISKEARD
9:30am, 11:30am, 5:30pm or 7:30pm
Lower Hall, Church St., Liskeard
PL14 3AQ. Tel: Vicki **07973 402829**

WEDNESDAY LISKEARD 9:30am
Liskeard & District Sports Association,
Lux Park Coldstyle Road Liskeard
PL14 3HZ. Tel: Sammy **07807 289801**

THURSDAY DOBWALLS 5:30 or 7:30pm
Dobwalls Football Club Dobwalls Liskeard
PL14 4LU. Tel: Sammy **07807 289801**

FRIDAY GOLBERDON 9:30am
Golberdon Village Hall Nr Callington
PL17 7ND. Tel: Jane **07769 734316**



slimmingworld.co.uk



Badminton?

Come and join our relaxed and friendly group at Pensilva Millennium House

Mon & Tue 7.30 - 9.30pm

Friday 8.00 - 10.00pm

For further info phone

Nigel or Carol on

01579 363594 or

07885 798370

All Being Well

Your local, friendly gym.

Over 18 years working in our local community to improve health, fitness and well being. Call **01579 363890**, drop in at Millennium House, Pensilva, or email abwgym@gmail.com

Opening hours:

Mon/Fri	10am-3pm & 5pm-9pm
Wed	10am to 3pm
Tues/Thur	9am to 1pm
Saturday	10am to 1pm

Ask about GP exercise referrals!

PENMILL ART GROUP

We are a small, friendly group using all art mediums. If you paint we would love you to join us.

We meet at

Millennium House

10-2 every Monday.

Please come & see us or phone Pam on

01579 363441.

LISKERRET MALE VOICE CHOIR

We are currently looking for new members in all sections. No previous experience necessary.

Practice Mondays 7:30pm at the Royal British Legion, Liskeard.

Enquiries to the secretary on

01579 363881

Email: charaton@btinternet.com

Website: www.liskerretmvc.org

Charity No. 1120243

PENSILVA VILLAGE HALL

Anyone wishing to book the hall for meetings, birthday parties or fundraisers please contact Peter or Jackie Browning on **01579 363212** or email **peter@pensilva.freeserve.co.uk**.



Please note that as well as hall rent there is a coin meter for heating at 40p/hr.

We hold a Hall users and committee meeting on the fourth Monday of each month at 7.00pm. Please feel free to come along and support us.

Organisations that meet in Pensilva Village Hall

Meeting Times	Organisation	Contact Person	Telephone
Mon. 4:00 - 6:00	Brownies	Mrs Martha Oliver	01579 362239
Alternate Wed. 2:30 - 4:00	Wednesday Club	Mrs Jean Conner	01579 363221
Wed. 7:00 & various	Snooker Club	Mr Philip Bond	01579 362091
Thu. 6:00 - 8:00	Guides	Miss Caroline Hambly	01579 363228
Fri. 1:00 - 3:00	MIMS	Chris	01579 343702
Fri. 4:00 - 5:00	Rainbows	Mrs Lynne Bond	01579 362091

St Ive Institute & Village Hall

Every Wednesday	10:30am to 12 noon 10:30am to 11:30am	Coffee morning Travelling Post Office
First Monday	7:30pm	St Ive Gardening Club
Every Monday & Thursday	7:00pm	St Ive Snooker Club

**NHS
REGISTERED**



**SUPPORTED BY
LOCAL DOCTORS**

Do you suffer with various long term health conditions?

Come along and join our small, friendly group.
For company, light exercise and support.

Upstairs in Millennium House every Monday from 12.30pm - 2.30pm

For more information contact us:

Pauline **01579 345989**

Jeanette **01579 363691**



The **co-operative**
Community Fund



Struggling with Sight Loss?

iSight Cornwall offers practical help to people living
with sight loss in Cornwall including:

Low Vision: Advice for low vision aids

Assistive Technology: Advice on products

Benefits Advice: Assistance to claim entitlements

Equipment Demonstration: Advice on gadgets

Social Clubs & Activities: Links to clubs & activities in the county

For more details Telephone 01872 261110 or visit

www.isightcornwall.org.uk

DO YOU NEED A HELPING HAND?

Reliable, Friendly, Experienced, Mature local resident offering the following services:

Cleaning **Ironing** **Shopping**
Light Gardening **Dog Walking**

CRB/DBS checked and fully insured. Competitive rates.

Contact Jess: Telephone or text: 07934 764 327.

Email: homeangel77@yahoo.com.



Find us on Facebook



PENSILVA HEALTH CENTRE - PATIENT PARTICIPATION GROUP

We are a group of patients who meet regularly with the Health Centre to bring forward for discussion ideas, comments and suggestions about your surgery. In the past we have held open days, helped at the flu clinics and participated in a trial Peoples Commissioning Board Project.

We also organise a Carer's and bereavement group (see below) and a 'Walking for Health' group

(Contact Ivor Vaughan 07979 934604).

You can contact us directly or through the Health Centre.

PENSILVA HEALTH CENTRE CARERS AND BEREAVEMENT GROUP

Are you a carer, bereaved or lonely? Then come along and join our Group. Tea, Coffee and plenty of friendly chat and, when possible, local trips to various venues.

**Meetings are held every third Thursday of each month at 11.30.a.m.
Meet in Millennium House car park.**

For any information please contact Jean Connor 01579 363221

St Ive Church

Services at 11:15am Every Sunday

- Jun 3d** **Holy Communion**
- Jun 10th** **Family Service.** Small pets welcome
- Jun 17th** **Holy Communion.** Lunch follows this service
- Jun 24th** **Morning Worship**

Other June Events

- Fri 1st** **Produce Market and Bric-a-brac**
Home made cakes etc, fresh vegetables, locally made pasties, pickles, jams and much more. **Farm fresh meat from Trehill Farm Produce.**
- Sun 3rd and every Sunday until September. Cream Teas in Church. 2 - 5pm**
Delicious homemade scones and cakes.
- Sun 17th** **Lunch in Church** 12:45pm. All welcome. 2 course lunch only £7.

Reverend Margot Davies **01579 208698** email margotaj@tiscali.co.uk

Church Wardens Brian Dwelly **01579 364010** btdwelly@aol.com

Colin Catchpole **01579 383867** ccatchpole@hotmail.com

Donations for Liskeard Food Bank can be left in the Church each day between 10am & 4pm



SEW, KNIT AND NATTER.
WHY NOT JOIN US ON
THE LAST TUESDAY OF EACH MONTH
for sewing, knitting or just for a chat and a
cup of tea or coffee and cake.

We meet at ST JOHN'S CHURCH, PENSILVA from 2pm to 4pm.

ST JOHN'S CHURCH, PENSILVA

Services for June 2018

Anglicans and Methodists share services at 11 am each Sunday, coffee served before service

Sunday 3rd	(10am	Anglican Benefice Eucharist at St Cleer)
	11 am	Rev Sue Hill, Holy Communion
Sunday 10th	11 am	Café Church
Sunday 17th	11 am	Anglican Holy Communion
Sunday 24th	11 am	Dr Kathy Lang
	5 pm	Food for Thought at St John's Church

Café Style Church followed by coffee and chat, Thursday mornings, 10am, everyone very welcome.

Afternoon Tea, Friday 1st June at 3pm. Cup of tea and a chat. Everyone welcome to join us.

Fellowship Group 7:30pm on Friday 8th and Friday 22nd June. Contact Carolyn on 362698 for details.

Prayer Group: 2pm Fri 1st, 15th & 29th June. Please ring Eileen on 362580 or Carolyn 362698 if you would like prayer for yourself or someone else.

For further details of the Services held in St John's, if you know of any illness or need in the village or if you would like your wedding or baptism in the church, please contact:

Geoff Cox - 362698 or Frances Tucker - 363718

Alford Joinery - For all your joinery needs

Specialists in bespoke doors, windows, staircases, conservatories, etc.

- 20 years experience
 - Large or small jobs
 - All joinery hand-crafted
 - Top quality FSC certified timbers
 - All joinery can be fitted if required.
- 01208 873444 or 07757 666460
info@alfordjoinery.com
www.alfordjoinery.com

St Ive Methodist Chapel

Services for June 2018

- Sun 3rd June** 11am Miss Judith Walker 158th Chapel Anniversary
 6pm United Rural Church Service at St Ive MC.
- Sun 10th June** 11am Mr Steve Wherly
- Sun 17th June** 11 am Mrs Margaret Halls-Falconer
- Sun 24th June** 11 am Mrs Linda Eastlake
 5pm "Food for Thought" at St John's

For regular updates on services etc at the Chapel, as well as around the area, look at the St Ive Methodist Church Facebook page.

Village Churches Together group will meet 7:30pm at St Ive MC on Tuesday 5th June. Everyone welcome. More details from Keith on 01579 382334.

The Chattermakers craft group will meet on Thursday 7th and 21st June in the Guild room from 7:30pm. This is a group open to anyone that likes to do any craft and would like to share with others of a like mind (hence the 'Chatter' bit!!) More details from Kathryn on 01579 382334. All welcome.

The Village Church Prayer meeting will also be held at St Ive Chapel on Thursday 7th and 21st June from 7:30pm. All welcome

Trerosa Studios

Pottery & Woodturning activities for you to enjoy

Well equipped

All materials provided

Help / tuition from qualified teacher if required

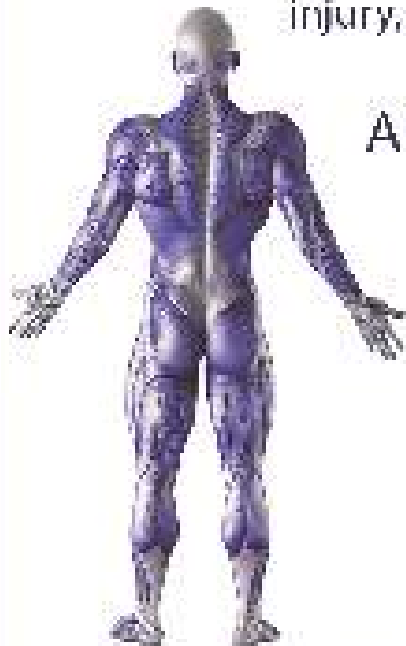
01579 647247 or 07486 089466

Email: bob@trerosacrafts.co.uk www.trerosacrafts.co.uk

QUALIFIED RAYNOR MASSAGE THERAPIST

RELAXING AND THERAPEUTIC DEEP TISSUE MASSAGE TREATMENTS

Effective for many different types of chronic pain, sports injury, stress and tension related problems



APPOINTMENTS AVAILABLE AT

THE WELLBEING CENTRE
LISKEARD 01579 344090

THE NATURAL WAY
LISKEARD 01579 345300

Contact : Tina North
Phone : 07720 832322

tina-north@massage-therapy-cornwall.co.uk



R J Gardening & Handyman Services

All aspects of gardening and handyman work undertaken.

- ~Local and Trustworthy
- ~Hard Working
- ~Reliable and Experienced
- ~No job too small
- ~Competitive rates

Contact Raymond on:

07541 229064 or 01579 347622

raymond_pearcegb@yahoo.com

Find us on Facebook.





R&C



Groundworks and Landscapes

Fencing	Patios
Paths & Steps	
Turf & Astro turf	
Driveways	Rendering
Retaining walls	Decking
Digger work	
Footings & foundations	

And more

Free no obligation quotes

Call Rob on:

**07518246666 or
01579 641802**

Window Cleaner

Window Cleaner

Also any upvc cleaned

i.e. fascias, gutters, etc.

gutters cleared & unblocked

Please phone Rob

07709 053464

Window Cleaner

Window Cleaner

Save Costly Energy!



SOLARTEC

Windows &
Conservatories Ltd

**'A' Rated WINDOWS & DOORS
at BEST PRICES EVER!**



Professionally fitted and finished by us with a

FENSA REGISTERED 10 year ins. guarantee.
In all colours



NEW

**FACTORY SHOP
SUPPLY ONLY**

For all your windows, doors, conservatories,
fascia, trims, guttering and sealants

**7-10 DAY TURN AROUND ON WINDOWS,
DOORS and CONSERVATORIES**

TEL: 01579 343425

FAX: 01579 344500

WEBSITE: www.solartecwindows.co.uk

EMAIL: sales@solartecwindows.co.uk

KEEPING JOBS IN CORNWALL



PJR Garden Services

Phil Rule

All aspects of garden
work - grass / hedge
cutting, patios, fencing
etc.

Mobile 07387 449004

Tom Marshall

TM Plastering

Plasterer and Property Care

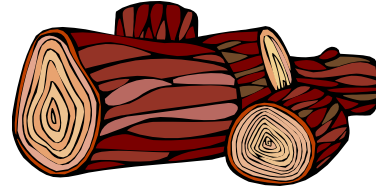
07544819284

Tommarshallcornwall@gmail.com

Free estimates

- Internal plastering
- Internal / external rendering
- Damp proofing
- Stud Walls
- Patio laying
- Chimney repairs
- Pointing
- Painting

SEASONED LOGS



MIXED LOAD
or
HARDWOOD

Tel Jonathan

Mobile 07966 070725

or
01579 363157

Also tree/hedge work
undertaken

DAVID HEWETT GARDEN SERVICES

For all aspects of garden care:

lawn mowing, grass cutting,

strimming, hedge cutting,

clearance, and more.

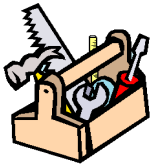
01579 363796

25 years experience.

Fully insured.

KEEP IT TIDY

General Property Maintenance
including Decorating, plus Electrical



HONEST PRICE
for
QUALITY WORK.



No Job Too Small

Kit Rickard

18 Higher Glen Park
Pensilva

Phone: 01579 363378

Mobile: 07855 699071

Email: KITKeepItTidy@hotmail.com

Chiropodist

Fully qualified, experienced and
insured Chiropodist/Podiatrist

- Nail cutting, corns/callus,
diabetic foot care etc
- Personal home visits, groups
and residential homes

Contact Clare:
07757973709



DOG GROOMING

40 YEARS EXPERIENCE



SMALL and MEDIUM Dogs
Groomed to Your Request

LISKEARD AREA
Inquiries Welcome

Call Patricia: 07517 658862
TO YOU OR TO ME



Domestic Electrical
Property Maintenance
Interior & Exterior Work
Carpentry :: Decking
Kitchens :: Bathrooms
Wall & Floor Tiling
General Plumbing

MCCARTHY PROPERTY MAINTENANCE

Electrical Safety
Register incorporating
ELECSA  ECA
Certification Ltd

HIGHLY REGARDED LOCAL BUILDER
COMPETITIVELY PRICED
COVERING THE SOUTH WEST

Contact Dominic

07968 599 675

01579 362 945

info@mccarthypropertymaintenance.co.uk

www.mccarthypropertymaintenance.co.uk

Alphaplas Limited t/a
Trims&Windows

www.trimsandwindows.co.uk

Double Glazed uPVC
Windows-Doors-Conservatories
'Conservation' vertical sliders a speciality



Supply only to Trade & DIY or
Full installation registered with

FENSA inc
10yr insurance backed guarantee



Email: alphaplas@btconnect.com

01752 840078

Installation team based in
Pensilva, Looe & Torpoint

Owna

Mobile Device and PC repair

07766013897

alex@owna.co.uk



For repair of mashed mobiles, trashed tablets, or poorly PC's visit www.owna.co.uk or call Alex for a free quote, no fix no fee

MARK FITCH CHIMNEY SWEEP

- * BRUSH & VACUUM
- * CLEAN, RELIABLE SERVICE
- * COVERING ALL S.E. CORNWALL
- * DISCOUNT FOR MULTIPLE CHIMNEYS
- * COWLS & GUARDS FITTED
- * STOVES SERVICED



*Call
Mark on:*

01579 350762
07773 462643





Affordable Counselling

**Caring, confidential,
non-judgemental**

- Increased confidence and self esteem
- Help to cope better at difficult times
- Improved relationships
- Clarify confused thoughts & feelings
- Assertiveness
- Personal insight
- Improved emotional health
- Available for youth and adults

**Isabelle McGarahan BA, PGCE
Dip in Therapeutic Counselling,
Member of ACC, DBS cleared**
www.im-counselling.org email:
isabelle@im-counselling.org
01579 344090/07857326229



**Patchwork and Quilting fabric shop.
Contemporary fabrics from leading
Brands Lewis & Irene, Michael Miller,
Riley Blake, Robert Kaufman, Blend
Fabrics & Dashwood Studios.**

**Unit 4 -5 Holwood Business Centre
Holwood Farm**

Blunts

Cornwall

PL12 5DW

Opening hours:

Friday 10-4

Saturday 10-5

Sunday 11-4

www.sewinspiredplymouth.co.uk

**Follow us on Facebook and
Instagram.**

PENROSS

**Rosecraddoc Lodge Holiday Bungalows
(Between Pensilva & Liskeard)**



**Ideal for visiting family and friends !
Refurbished in 2018. Sleeps 4. Electric,
heating, bedding and towels inc in rent.
Patio. Free wi-fi. Follow us on Facebook.**

**Sorry no pets and no smoking.
Contact Julie Tucker 01579 362221 or
penhargetfarm@gmail.com
for 15% discount**

NICOLA GREENE

BSc (hons) Podiatry MChs

HPC Registered Chiropodist/Podiatrist

**Home Visit Practice treating all
your foot care needs:**

- Nail Cutting
- Corns and Calluses
- Thickened Nails
- Dry Cracked Skin
- Verrucae
- Foot Pain
- Diabetic Foot Assessments
- Wound Care

T: 01579 590027

T: 01752 291565

M: 07786164205

E: nicki_greene@yahoo.com

Group Travel

Enterprise Park, Midway Road, Bodmin
Cornwall PL31 2FQ. Tel: 01208 77989



2018 COACH EXCURSIONS

2nd - 6th JUL - LLANDUDNO TOUR

22nd JUL - EXMOUTH SEA CRUISE

4th AUG - COUNTRYFILE LIVE

5th AUG - FESTIVAL OF BRITISH EVENTING

21st AUG - DARTMOOR ZOO

25th - 26th AUG - DORSET STEAM FAIR

31st - 2nd SEP - BURGHLEY HORSE TRIALS

11th SEP - WIDECOMBE FAIR

15th SEP - TOBY'S HARVEST FESTIVAL

27th - 1st OCT - SHROPSHIRE BY COACH, RAIL & CANAL

3rd NOV - BRIDGWATER CARNIVAL

17th NOV - FESTIVAL OF LIGHT @ LONGLEAT

23rd - 26th NOV - TURKEY & TINSEL @ BOURNEMOUTH

24th NOV - CLARKS SHOPPING VILLAGE, STREET

8th DEC - BATH CHRISTMAS MARKET

16th DEC - MOUSEHOLE & ANGARRACK LIGHTS

2019

26th APR - 1st MAY - ISLE OF MAN SPRING TOUR

16 TO 70 SEAT COACHES AVAILABLE FOR PRIVATE HIRE. CORPORATE/ VIP, EVENTS & CONFERENCES, WEDDINGS (CAN INCLUDE STAG & HEN PARTY PACKAGE), HOLIDAY TRANSFERS, FUNERALS, DAYS OUT, GROUP TOURS, GOLFING HOLIDAYS & SPORTING EVENTS.

FOR BOOKINGS AND A BROCHURE PLEASE CALL

01208 77989 / 01208 72669

Website: grouptravelcoachhire.com Email: grouptravelcornwall@btconnect.com

SCOTT BERRIDGE

Complete Property Refurbishment & Building Maintenance

INTERNAL & EXTERNAL DECORATING

PAPER HANGING • TILING SPECIALISTS

PLASTERING • PLUMBING • CARPENTRY

FENCING • DECKING • PATIOS

- Local Pensilva • 25 years experience in Cornwall.
- Proper job • Clean & Tidy • Good references
- Trustworthy • Excellent prices. • Free estimates.

scottberridge@me.com

07889 218 710 (Daytime) 01579 362 006 (evenings)

INDEPENDENT
FAMILY
FUNERAL
DIRECTORS



Undertaking your individual
needs with efficiency,
compassion and care...

Perfect Choice Prepayment
Funeral Plans from £3249.00

(Prices correct as at 01.01.2013)

01579 362358



Avalennek, Caradon Town,
Upton Cross, Liskeard
Cornwall PL14 5AR
Telephone 01579 363598
Mobile 07901 538132
chrisrounsevell@tiscali.co.uk

HOG ROAST EQUIPMENT HIRE AND MEAT SUPPLY

Hog Roasts For Those Special Occasions
Self Catering or Hassle Free Service
Everything done to your special requirements

CHRIS ROUNSEVELL
TRADITIONAL BUTCHER



Local Accountant offering fixed fee accounting services

With over 20 years experience, I am a fully qualified, friendly, local accountant

- ✓ Annual Accounts for Sole Traders and Partnerships
- ✓ Book Keeping & Payroll
- ✓ Personal Tax Planning
- ✓ Company Accounts
- ✓ Business Support & Advice

- ✓ Self Assessment tax returns
- ✓ iXBRL tax filing
- ✓ Tax investigation Fees Insurance
- ✓ Company Secretarial work
- ✓ Tax calculations for Sole Traders and Partnerships

Kate Vaughnley FCCA - Chartered Certified Accountant

Website : www.kvaccountingsolutions.co.uk or Email : katevaughnley@gmail.com
Telephone : 01579 364083



GRAB LORRY HIRE

PLANT HIRE & GROUNDWORKS

07970 270218 | 01579 344402

**MORE COST-EFFECTIVE THAN SKIPS
FOR SOIL, RUBBLE & GREEN WASTE
REMOVAL!**

CAN REACH OVER WALLS &
FENCES FOR COLLECTION
FROM INACCESSIBLE AREAS

SKIP BAGS AVAILABLE FOR
SMALL JOBS



OPEN FOR RETAIL, TRADE & COMMERCIAL ENQUIRIES

CORNWALL TILE CENTRE

www.cornwalltile.com

tileitalia

The Natural
TILE & STONE COMPANY

BESPOKE
TILE IMPORTS



Tiles & Stone for:

- ◆ Bathrooms & Kitchens
- ◆ Living Areas
- ◆ Conservatories
- ◆ Patios & External Areas
- ◆ Wet Rooms & Spas
- ◆ Swimming Pools
- ◆ All Commercial Applications

- ◆ Local & National Delivery Service
- ◆ Sample Loan Service
- ◆ Free Quotations
- ◆ Free Design Ideas & Planning Advice
- ◆ Trade Enquiries Welcome
- ◆ Wet Room Specialist
- ◆ Full Range of Adhesives & Grouts

Pensilva Showroom

Open Mon - Thurs 8.30am - 5pm
Friday 8.30am - 3pm
Saturday 9.00am - 1pm

Wadebridge Showroom

Open Mon - Fri 9am - 5pm
Sat 10am - 3pm



**01579
362264**

DISCOUNT TO ALL PUMP READERS



The
**RACEHORSE
INN**



Gastro Pub

Head Chef Phillip Bradshaw

Ray and Flori welcome you to
the Racehorse INN

A fine food experience in a convivial
atmosphere

Our superb Sunday lunch is one to be tried

Open Every Day for Lunch and Dinner

info@racehorseinn.co.uk
www.racehorseinn.co.uk

Take-out: Pizzas & Fish'n'Chips now available



North Hill Village, Cornwall, PL15 7PG

01566 786 916

J. H. Simmons

Painting & Decorating



Interior
&
Exterior



No Job Too Small

References Available

For more information
Please call John
01579 362688

7 East Park, Pensilva

D.J.A. BUILDING SERVICES

ALL ASPECTS OF PROPERTY
MAINTENANCE BUILDING &
REFURBISHMENT

- * Bespoke Furniture and Kitchens
- * Wardrobes and Bookcases
- * Garden Sheds, Poultry Houses & Small Animal Shelters
- * Over 30 years' experience
- * Fully insured
- * References available
- * Free estimates
- * No VAT

**Call David on 01579
364050 / 07767662635**

Westwood Garden Maintenance



Antony Watts

Grass Cutting, Clearance

Weeding, Turfing

Hedge Cutting

Patio Cleaning, Planting

Regular Visits / One-off Contracts

Residential & Commercial

FREE ESTIMATES

01579 362019 www.westwoodgm.co.uk 07952 094472

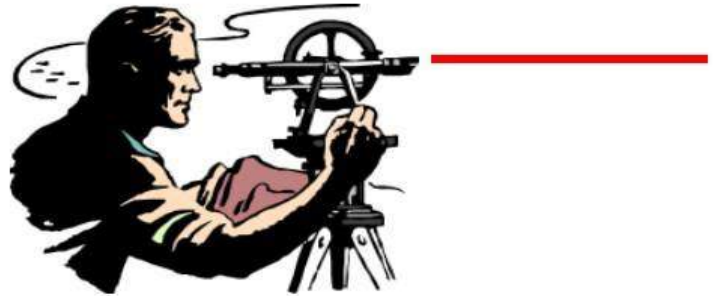
Martin Hoare – Local, Reliable, Competitive



WHEEL DIGGER FOR HIRE
ALSO AVAILABE 'BREAKER'
AND NEW CONCRETE
'CRUSHER BUCKET'

ALL AT COMPETITIVE RATES

GROUND WORKS
DRAINAGE
NEW DRIVEWAYS
SEPTIC TANKS &
'SOAK AWAYS' INSTALLED



LASER LEVEL FOR HIRE
QUOTES AVAILABLE



Phone 01579 363517

or

Mob 07863 291213



Steve West Aerial Services



Installations / Repairs to
TV Aerials, Satellite Dishes
and Radio

Customised to your requirements

Wireless network &
Mobile phone extensions

TV mounting on walls
Help setting up systems
and demonstrating.

Phone 01726 212761

Mobile 07941 606 183

e-mail stevewestaerials@uwclub.net

CORNWALL PET SERVICES

HOME BOARDING FOR DOGS
DOG WALKING
HOME VISITS

Situation: Between Liskeard and Callington

- Home Boarding for Dogs – safe home environment, off-road walking
- House calls to suit your family pets
- Dog walking
- Fully insured
- Police Checked

**Chris Day
Birchill
Quethiock
Liskeard Cornwall
PL14 3SQ
Tel 01579 340438**

Email – cornwallpetservices@gmail.com
www.cornwallpetservices.wix.com



THE HOME OF WOOD



**OPEN TO THE TRADE & PUBLIC
FOR ALL YOUR HOME AND GARDEN NEEDS**

**DECKING • FENCE PANELS • OAK FLOORING • STRUCTURAL TIMBER
GARDEN FURNITURE • GATES • DOORS • CEDAR CLADDING**

TELEPHONE 01503 240308

EMAIL: STACY@WHBOND.CO.UK

WWW.BONDTIMBER.CO.UK

TRERULEFOOT • SALTASH • PL12 5BW

ADVERTISE

HERE!

This box for **just £25 per month** including VAT.

10% discount for a 12 month order.

i.e. **£18.75 + VAT** per month for 12 months

Full tariff on page 3

One thousand copies per month
distributed free of charge to
households in the Parish of St Ive.

Pensilva Stores

Amazing Value

Premier
a great deal more from your local store
Mon-Sat. 7:00 AM. – 9:30 PM.
Sunday 8:00 AM. – 9:30 PM.

- ✓ Fantastic Special Offers every month!!! (See store leaflets)
- ✓ Come and Check out our great deals on Wine, Beer and Spirits
- ✓ Local Produce: Homemade Butter and Clotted Cream, Meat from our local butcher
- ✓ Cornish Fresh Fruit and Vegetables
- ✓ Fresh Bread, Pasties and Cakes
- ✓ Take Away Coffee, tea and hot chocolate
- ✓ Newspapers and Magazines, Greeting Cards
- ✓ Paypoint, Lottery

*** Free to use ATM ***
*** Card Payment ***

Friendly Staff + Service with a Smile !!!

Pensilva Stores is a family run business who have been serving local people and visitors for more than 21 years.

Higher Road, Pensilva, Liskeard, Cornwall PL14 5NQ

Tel: 01579 362547

MENDOLOGY

Garage Door Specialist

- Repairs
- Servicing
- Installations

Out of hours service
call Dave anytime 07974 442645


MENDOLOGY COMMERCIAL DOORS LTD

www.mendologydoors.co.uk

01579 363760

PensilvaCars

01579 363516

- ✓ MOTs Class 4
- ✓ Service
- ✓ Repair
- ✓ Tyres
- ✓ FREE Courtesy Car
- ✓ Car & Van Sales
- ✓ Diagnostics
- ✓ Air Conditioning
- ✓ 

We have offered a supply, fit & balance of tyre service for 10 years at competitive prices.

Most of our tyres can be supplied the same day.

LOCAL RECOVERY £45.00

www.pensilvacars.co.uk

pensilvacars@hotmail.co.uk

We can service and repair your car to manufacturer specification, keeping your dealer warranty without main dealer expense.





KEITH RICHARDS

Motor Body Repair Specialists

A family run business with fully equipped & maintained workshops & a focus on
Customer Care

- ◇ Motor Body Repair Specialist
- ◇ Mechanical Repairs
- ◇ Servicing to All Makes & Models
- ◇ Computer 4 Wheel Alignment
- ◇ 24 Hour Recovery Service
- ◇ Renovations & Re-sprays
- ◇ Member of RMI (Retail Motor Industry Federation)
- ◇ Latest Diagnostics (including specialists for VW, Audi, Seat, Skoda & Vauxhall)

With over 30 years' experience we aim to provide you with:- Value for Money -
Friendly Service - Professional Approach - Expert Advice that you Can Trust
(Visit our website for more details)

Pensilva Industrial Estate, St Ive Road, Pensilva, Liskeard, Cornwall PL14 5RE

Tel: 01579 362593

Email: keith@keithrichardsmotorbody.co.uk

Fax: 01579 363194

Website: www.keithrichardsmotorbody.co.uk

Wm. Newham & Sons Est. 1835

Proprietor Robbie Savill AWCB

CHIMNEY SWEEPS & BLACKSMITHS



CHIMNEY SWEEPING

BIRD GUARDS, COWLS & POTS FITTED

CCTV INSPECTIONS & SURVEYS

STACK REPAIRS & REBUILDS

RIGID STEEL SYSTEMS ERECTED

STAINLESS STEEL and PUMPED CONCRETE
CHIMNEY LINING

STOVES SUPPLIED, INSTALLED & REPAIRED

FIREPLACE ALTERATIONS & RENOVATIONS

FULL RANGE OF FIREPLACE FURNITURE
made to order

01579 347777

need somewhere to stay ?
between homes ?
family/friends visiting ?

Cutkive Wood

Holiday Lodges

ideal for Pensilva
& St.Ive

please call Jackie on
01579 362216

J.J.CHILD

PLUMBING AND HEATING ENGINEER

OIL AND GAS APPLIANCE SERVICE , REPAIR AND BREAKDOWNS

LANDLORD'S CERTIFICATES

OVER 25 YEARS EXPERIENCE
CALL JOHN ON 01579 362336
MOBILE 07837921086



502322

Bargain Corner Free Ads up to £50

Ads are free for items up to £50. £5 charge for items over £50. Please ring the Parish Office on **01579 363096** or leave a note at Millennium House reception or email **parishpump@btconnect.com**.

*****Please let us know when your item has sold*****

***** Note new price *****

WELMAR Piano. Upright, 2 pedals, 52 keys, Length 55", height 41". Bought from and regularly tuned by Evan Hatch (Pianos) at Launceston. Now **£600**.
01579 363010

WANTED. Chicken coop in reasonable condition. Large enough for three hens.
01579 363833

Wood-framed **mirror 2'6" x 3'7"**. **£10**.
Bench saw £15.
Electric strimmer. £10
240 litre **wheelie bin** for garden waste **£8**
01579 363812

TOSHIBA Regza 32" TV. Digital , HD ready 1080p, 3xHDMI, 2 x Scart. Freeview Ready. Full Instructions & remote controller. **£50**. **01579 362607**

Car Ramp 6' long. Folds in half. Unused. Good for loading mobility cars. **£49**.
01579 384222 or 07828 016665.

Mobility Walker Hardly used. Cost about £80 new from Argos. Will sell for **£40**
18 **Demijohns £1 each**. **01579 362001**

LINDAM Soft Folding Bed Rail, used once and in excellent condition. Colour Blue **£15**
GRACO TRAVEL COT in very good condition, Multi coloured base, (blue, red, yellow and green squares). **£10**
01579 382772

Child's garden metal **swing & accessories. £15. 01579 362085**

Very Comfortable 3 seater Dark Red **Leather Settee** in Good Condition. **£50** ono. (Buyer Collects)

Wooden **Sewing Box** in Good Condition with five sliding compartments, **£15** ono
3 Cobblers Shoes Irons, including a rare ladies shoe iron all in VGC. For use or ornaments. **£30**.

Binoculars 1 pair Vesper non-reflective titanic coated binoculars/optics, super field 7 x 50 with leather case **£25**.

Bosch Universal 300mm **cutting disc** for bricks, blocks and concrete, only used for a few minutes. In original packaging. **£10**.

Youngman Space-maker, **former Loft Ladder**, 9 runs, 9ft high x 1ft wide **£15**.

1 section of Aluminium **extension ladder** 12 runs, 11ft high x 13" wide **£10**.

1 section of Aluminium **extension ladder**, 13 runs, 10ft high x 13" wide **£10**.

01579 384658

Lec Fridge. Excellent working order. **£50**
Can deliver Pensilva area. **01579 363791**

Sony Home Cinema System CD/DVD/ Tuner/Amplifier with 5 small wired speakers, sub-woofer and remote control. **£50**. **07841 717913**.

Four wheel disability walker with seat and brakes. **£35**.
Three wheel disability walker with bag and brakes. **£30**.
01579 362417

Wickes Garden Shredder £10
01579 363812

4ft 6ins x 6ft 3ins double metal **bed frame**, black and brass, no mattress. Extremely good condition. **£30** Buyer collects.
01579 383915

Dremel Moto Saw. As new condition **scroll saw/fret saw**. Ideal for hobbyists. Own, plastic carry case but is missing vacuum cleaner adapter & instruction booklet. Instructions available on line. **£40**.
01579 362207 (Pensilva)

Superdry clothing **2 windcheaters**, black with fleece lining. excellent condition **£20 each** ono **2 hoodies**, 1 purple, 1 navy, good condition **£15** each or ono
Black sherpa lined **windcheater**, excellent condition **£30** ono
All sizes XS & S
Jack Wills **wool sweater** size 8 and Johnnie B red Sherpa lined hoodie age 11-12 **£10** each ono
Photos can be emailed. **07724 111132**

Berry's **sideboard**. Circa 1960s. 171cm high x 44.5cm deep x 78cm high. 2 cupboards with one reversible door. 4 drawers, one felt cutlery drawer. **£50** ono.
Unusual iridescent paper **side lamp**. Approx 31" high on small base. **£5**.
Buyer collects. 01579 345783.

Automatic guitar tuner (quick tune) includes electronic pitchpipe.v.g.c as only used a few times/with box. **£5**.
Inflatable punch tower, foot pump included, (160cm h). New still in box. **£5**.
Ladies motorbike jacket Rayven, size 12, black/pink, as new. **£50**.
Men's black leather bike jacket, 52L, & trousers, 40L, TARCA, vgc. **£50** the set.
Baby bouncer for up to 6mths. East coast, light fawn/with white polka dots design material, vgc, **£10**.
07743 416676 (Minions area)

Royal Sovereign **Strawberry Plants**. Potted £0.75 each. Bare rooted £0.60 each. **01579 320401**

Brand new, never worn, **motor bike helmet**, with visor and inside sun visor, red, grey & white. Size medium. Paid £90, will accept **£30** or nearest offer.
07980 284002

Reikie or Massage Table etc. Very good condition. (Fold away). **£35**. Pensilva area. **01579 363192**

Folding **3-wheel walker** with brakes and bag. Ideal mobility aid. Suitable indoor/outdoor. Hardly used. **£50. 01579 363081.**

Nest of 3 tables yew wood and glass top. Good condition **£45**.
3ft Mattress in clean condition. Ex quality. **£50**.
3ft Divan to match mattress. VGC. **£40**.
3ft Pine headboard very attractive **£20**.
01579 343990 or **07553 928333**

Targus Notepac plus classic 16" **laptop case**. **Black £5**.
Leather black briefcase 17½" x 12½" x 4". **£10 o.n.o.**
Both in good condition. **01579 362846**

Shires Show jacket. Black with purple Collar. Only been worn a couple of times. Ex. Con. **£25**.
01579 343992 or **07810 178802**

Homedics Back Massager. Full lumbar or Lower Lumbar only options. Plus variable intensity. Fits any armchair. Can be seen working. Only used twice. Great Xmas present. **£50** ono.
07973 510693 St Ive.

WANTED to buy, a small piece of non-development, flat, accessible **land** within 5 miles of St Ive. Any type of land considered.
Tel 01579 384658.

What's on in St Ive Parish ?

WHAT'S ON	WHEN	CONTACT DETAILS
MILLENNIUM HOUSE		
Aikido	Thursday 7:00pm	
Antique & Collectors Fair	4th Sunday Monthly 10:00 - 4:00	
Badminton Club	Mon & Tues 7:30pm. Fr. 8.00pm	01579 363594 (Carol & Nigel)
Book Exchange	Daily	01579 363096
Breath of Air	Monday 12.30pm - 2.30pm	01579 345989 Pauline
Country Dancing	Alternate Thursdays 8.00 - 10.00pm	01579 382402 Ray Buckingham
Fitness Pilates	Monday 9:30 - 10:30am	07850 473428 (Dianne)
Ladies Netball	Friday 09:15 - 10:15am	07985 387472
Pensioners Lunches	Tuesday 12:00 - 2:00pm	01579 363096
Short Mat Bowls	Thursday 7:00pm	01579 208528
Village History Group	Last Monday Monthly 7:30pm	01579 208754 (Angus)
Wildlife Group	Quarterly	01579 362539 (Hilary)
Woman's Institute	2nd Wed Monthly 7:15pm	01579 363718 (Frances Tucker)
Yoga	Wednesday 7:00pm	01579 344464
Zumba Fitness Classes	Wednesday 7:00 - 8:00pm	01579 363096 (Millennium House)
PENSILVA VILLAGE HALL		
Brownies	Monday 4:00 - 6:00pm	01579 362239 Martha Oliver
Pensilva Wednesday Club	Wednesday 2:30pm	01579 363221 Mrs Jean Conner
Pensilva Snooker Club	Wed 7:00pm + Various times	01579 362091 Phillip Bond
Guides	Thursday 6:00 - 8:00pm	01579 363228 Caroline Hambly
MIMS	Friday 1.00 - 3.00pm	01579 343702 (Chris)
Rainbows	Friday 4:00 - 5:00pm	01579 362091 Lynne Bond
Rangers	For Info	01579 362982 Kirsty Oliver
PENSILVA PRE-SCHOOL		
Pensilva Pre-School	Monday-Fridays 9:00 - 3:15 (session times available)	07890 023924 Mrs Suzanne Kinsman (Manager)
Tiny Tots Toddler group	Friday 9:15 - 11:15am	07890 023924 Mrs Suzanne Kinsman (Manager)

ST IVE INSTITUTE

Gardening Club	1st Monday monthly 7:30pm	01579 382762
St Ive Snooker Club	Monday & Thursday 7:00pm	01579 382315 R Bunkum
Art & Craft Group	Tuesday 1:00 - 5:00pm	01579 362216 (Jackie)
Post Office	Wednesday 10:30 - 11:30	
Coffee Morning	Wednesday 10:30 - 12:00	
St. Ive Singing Group	Thursday 4.00 - 5:30pm	01579 382341 (Clare)

St Ive Institute available for hire. £3.50 per hour. This includes the use of the kitchen & electric (excluding wall heaters which operate on a £1 coin meter)
Hall meetings will now be held bi-monthly on the second Tuesday of the month

ST IVE & DISTRICT GARDENING ASSOCIATION

Meetings in St Ive Village Hall 1st Monday in the month at 7.30pm

Mon Jun 4 A visit to **Anvil Cottage**, South Hill, PL17 7LP

Assemble in St Ive car park to leave at 7.10pm

Mon Jul 2 A visit to **Lynhaven**, Bealswood Close, Gunnislake PL18 9DE.

Assemble in St Ive car park to leave at 7pm

Mon Aug 6 A visit to **Troutbeck plants and nursery**, Troutbeck Farm, St Ive, PL14 3ND Assemble in St Ive car park to leave at 7.15pm

Visitors and new members are always welcome to join us.

ART AND CRAFT GROUP

We are a small friendly informal group who enjoy doing art and craft. If you paint or do any type of craftwork and would like to join us we'd love to welcome you.

There is no 'teaching' but help/advice is always forthcoming!

We meet at St. Ive Institute Hall from 1.00pm to 5.00pm Tuesday afternoons.

Only £3.00 for the afternoon plus 50p for tea/coffee and biccies.

If you are interested please give Jackie a call on **01579 362216**.

We look forward to meeting you.

Pensilva Post Office

Located through the Café on the 1st floor of Millennium House



Opening times:

Tuesday	-	9am to 1pm
Wednesday	-	9am to 12 noon
Friday	-	9am to 12 noon

THE MEL BAR ***MILLENNIUM HOUSE*** ***Licensed Free House***

GUEST ALES - LAGERS - CIDERS - WINES - SPIRITS

Opening Hours

Mon - Thu	-	5 pm to 11 pm
Fridays	-	3 pm to 11 pm
Saturday	-	12 noon to 11 pm
Sunday	-	12 noon to 11 pm

01579 363096



NEWS from *the MEL* **FIFA WORLD CUP**

All of England's games will be shown live at Millennium House, in the bar or on the big screen in the function room.