

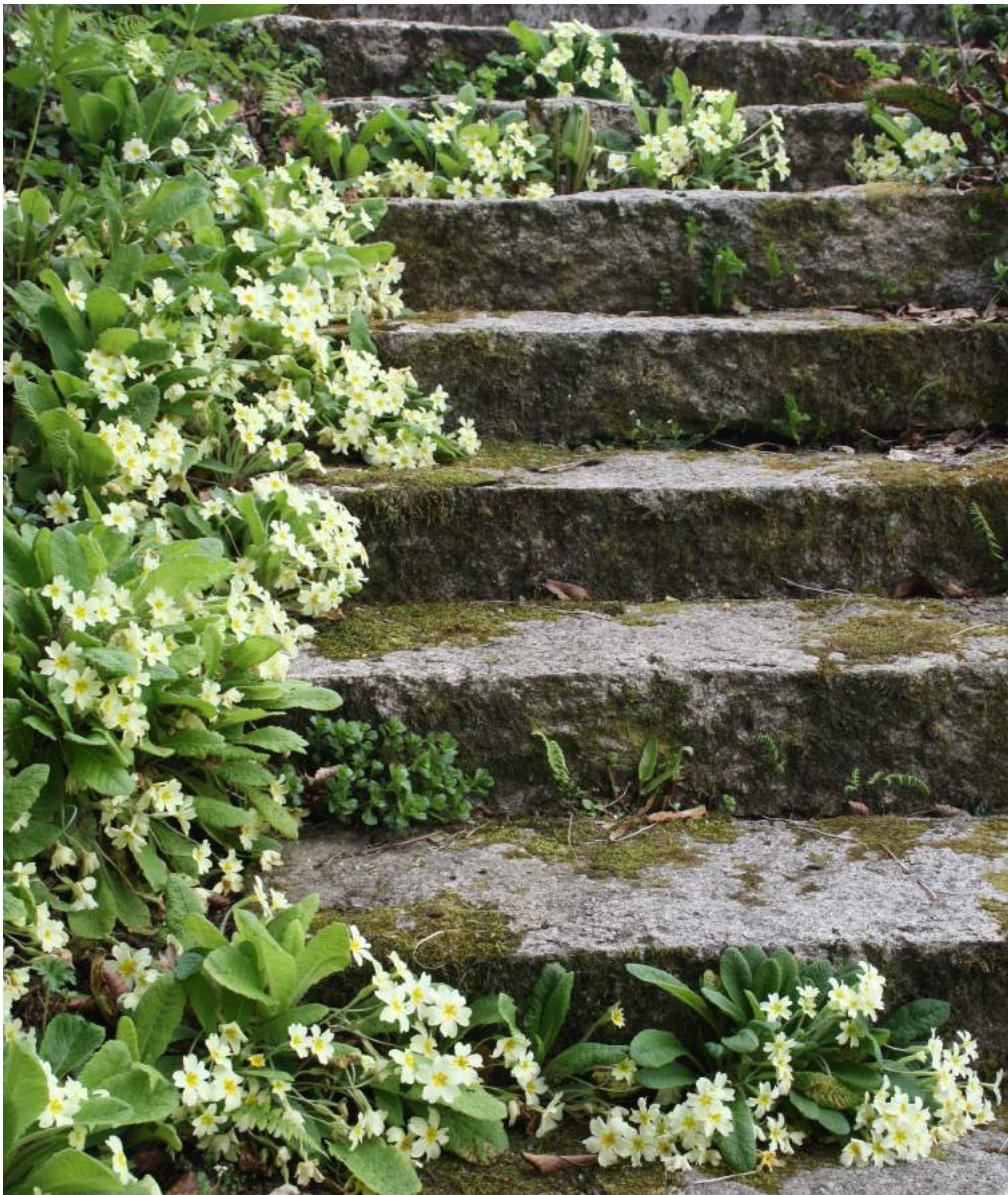
THE PARISH PUMP



May 2018
Edition 438



The Newsletter for the Parish of St Ives



SPRING HAS FINALLY ARRIVED!
(No word yet about how long it is staying.)

Disclaimer

The articles appearing in this magazine do not necessarily reflect the views of the Parish Council nor of the Parish Pump Editor.

Parish Councillors Telephone List

Peter Haimes (chair)	01579 362459	Alan Moss (vice-chair)	01579 362064
James Bruce	07411 192645	Marlene Carr	01579 362919
Martin Corney	01579 382450	Angie Haimes	01579 362459
Rosemary Farley	01579 384810	Tony Hodson	07973 536964
Nigel Libby	07968 891814	Kath Parkes	01579 362005
Ivor Vaughan	07979 934604	Craig Vaughnley	01579 364083
Sharon Daw (Cornwall Councillor) 07837 379305 slash.dash.daw@gmail.com			

Meetings of St Ive Parish Council

2nd Monday monthly: Parish Council Meeting, alternating between St Ive Village Hall and Millennium House (please refer to notice boards for the agenda showing start time and venue each month). Any changes to the regular dates (i.e. Bank Holidays etc.) will be publicised accordingly.

4th Tuesday Monthly: Parish Council Planning Committee Meeting, 7 pm at Millennium House Pensilva, followed by the Parish Council Finance & Administration Committee Meeting commencing at 7.30 in the same venue.

Date of Next Parish Council Meeting

Monday 14th May 2018 at 7:30pm at St Ive



Devon & Cornwall Police
Building safer communities together



101

Minicom 18001 101

Police Community Neighbourhood Office 01579 325454 at any time

Your Community Support Officer is PCSO 30271 Linda Phillips.

Contact: linda.phillips@devonandcornwall.pnn.police.uk.

Phone for a chat on 07703 885654. Leave a message & I'll call back when on duty

To report a crime call 101 or go to www.devon-cornwall.police.uk

In an emergency call 999

Contact details for St. Ive Parish Council and for Millennium House

Address for correspondence: Millennium House, Century Square, Pensilva PL14 5NF

General Parish matters should be raised initially with the Parish Clerk, Jenny Hoskin, who will present them to the Parish Council.

Telephone: 01579 363096, email: stiveparish@btconnect.com

For accounts matters for the Parish and for Millennium House contact John Body, Finance Officer: 01579 363096, email: millenniumhouseadmin@btconnect.com

Millennium House enquiries and reservations: 01579 363096

email: millenniumhouse@btconnect.com.

On the web: Millennium House Website: www.cornwallvenue.com

Parish website: st-ive-parishcouncil.gov.uk Facebook: facebook.com/stiveparishcouncil

Parish Pump Information and Contact Details

To contact the editor please email: parishpump@btconnect.com

or phone the Parish office: **01579 363096**.

Hardcopy submissions by post or by hand to the Parish office, Millennium House.

Softcopy submissions: By email to the editor in MS Word, MS Publisher, pdf, Tiff or jpeg. Please use A4 pages and minimum 16 point font as the Pump is initially produced in A4 size and reduced to an A5 booklet at the printing stage. If in doubt please contact the editor.

Current Advertising Prices including VAT at 20%

Per issue: Quarter Page £7.50 Half Page £15.00 Full Page £25.00

10% discount for 12 months paid in advance.

Bargain Corner free ads by email to the editor or drop off at the Parish Office.

Deadline for the Parish Pump is STRICTLY 15th of every month

THE MEL BAR

Relax and wind down
at the Mel Bar, Millennium House



From the Editor

The skittles season is drawing to a successful close for three Pensilva teams: Rebels have won division one for the third year in a row, Whealie Bins have won division two with games to spare, and Millers look certain to triumph in division three. By contrast two other teams, including mine, are biting their nails near the bottom of division two (wish us luck!) and a sixth Pensilva team will be willing me to end this paragraph right here! (Or here!)

Anybody involved in skittles in the Parish will tell you that the majority of the participants are at the high end of the age spectrum and not getting any younger! There are moves afoot to entice more people of all ages to take up the game. If you are at all interested I would encourage you to come along to the event on May 25th (notice on page 16). It's a fun game - see for yourselves.

And finally, happy birthday Millennium House. Twenty years old this month! (See notice on page 13).

All the best - Joe

Millennium House Opening Hours

Reception

9am till 2.30pm Monday to Friday

Community Coffee Shop

See separate notice on next page

Bar

5pm till 11pm Monday to Thursday

3pm till 11pm Friday

12am till 11pm Saturday and Sunday

If no-one is available please leave a message in our **letter box** at the front of the building or on our answer phone by calling **01579 363096**.

Parish Council Chairman's Column

I have received several complaints this month about parking on pavements. By blocking the pavement you prevent people on mobility scooters from using the pavement. If there is no drop kerb nearby, then they have to go back a long way to get on to the road and pass the obstruction (and their scooter may not be road legal!) or give up on their journey altogether. Also mums with push chairs are forced into the road, which is dangerous for them and their children. So please park on your drive or park somewhere where you are not blocking the pavement.

I have had reports of garden ornaments being stolen in Pensilva, and the same garden has been targeted more than once. Be warned the police are investigating, so if it was a prank, return them.

On the 7th May Millennium House is celebrating its 20th anniversary and, to that end, the events group are organising a tea party with a free pasty and a cream tea, and you are all invited. If you are involved in any group in the Parish and would like to promote it (for free) on a stall in the marquee on the lawn, then contact Ruth at Millennium House to book a table. See the advert elsewhere in the pump for more details.

Sadly, we have had to stop the monthly community lunch at Millennium House due to lack of support, which made the event unviable, however we are investigating several options to start something similar.

Lastly on a brighter note, the bar at Millennium House has just been refurbished (with a grant from the brewery). So come along and see the improvements and enjoy a drink in the Mel bar.

Pete Haimes.

Pensilva WI March Meeting

Pensilva WI 70th Birthday Tea

Pensilva WI were joined by members from Blunts, South Hill, Linkinhome, Liskeard, St. Neot and Menheniot WI's to celebrate their 70th Birthday on Saturday 14th April at Millennium House, Pensilva. Entertainment was provided by Steve Sutton who sang and played a variety of folk tunes, some very funny and some the ladies could join in with. Thank you Steve.

A wonderful spread provided by the ladies of Pensilva WI was enjoyed by all. Each table was provided with a sheet listing well-known people who were born in 1948 and other events which took place in that year. To commemorate 100 years this year since some women were given the vote, a quiz sheet about the Suffragettes was also on each table.

The lovely 70th birthday cake which was made and decorated by Cherry Woodhouse was cut and everyone enjoyed a slice. It was lovely to meet friends old and new and an extremely enjoyable afternoon was had by all.



L to R. Cherry Woodhouse Vice President, Jean Hoare Secretary, Francis Tucker President and Verna Dawe Treasurer cut the celebratory cake.

THE Growing Project

PENSILVA

April has been our month for spring cleaning now it is possible to go up the garden without weather gear and waders or snow boots! We have been clearing our site of brambles and nettles, surplus pots have been donated to Liskeard in bloom and Morley Tamblyn lodge in Liskeard and a number of items that have been kept 'just in case' have found their way to our local refuse site.

Our main growing season is now in full swing and the majority of seeds for our summer crops have now been planted. We have drawn out a plan of where everything will be planted and bare patches of ground have been eyed up to see if a small raised bed or even 2 could be slotted in.

We regularly welcome a dozen volunteers on Wednesdays between 10am and 2.30pm and we are pleased to welcome a new volunteer Chris and equally pleased to welcome Colin and Kirsty back to us. We have just introduced a second volunteer day on Thursdays between 12 and 3 to get extra jobs done and would like to start a monthly volunteer day on a Saturday, we would like to hear from anyone interested in joining us on one of our volunteer days.

We are still in need of pallets and any other surplus wood for our next projects and also any unloved water butts or compost bins.

Thank you to our regular vegetable box customers and those that buy from our roadside stalls for your support, if you are not yet buying our organic vegetables there are 2 ways you can buy from us - you can order a box and have it delivered to your door weekly or fortnightly. We offer a regular or large box and also a fruit box.

You can also shop at our purple roadside stalls where you will find a variety of veg grown on our land and also from Riverford at very competitive prices.

Please note our contact details have changed:

Email growingprojectpensilva@gmail.com

Phone: 07398 828783 (veg boxes)

Phone: 07854 353865 (Admin)

St Ive and District Gardening Association

St Ive & District Gardening Association kicked off its summer visits programme with a trip over the Tamar to Duskhunter Cottage at Roborough. Unfortunately persistent rain and mist accompanied the visit but owner Angela Magee made us welcome and gave a tour of the garden which is very quiet and rural despite being so close to Plymouth. Lawns - including what must have been a delightful crocus lawn in March - slope gently down to a large pond and are surrounded by mixed borders full of trees, shrubs, bulbs and perennials. Sadly the effects of the cruel winter could be seen on some of the more tender specimens but the garden was burgeoning with the promise of much colour to come when the weather picks up again, and the massed bulbs blooming on the terrace were a delight to see. Surprisingly, on return to Liskeard, it was clear that at home there had been no rain or mist at all! The club's next visit is to North Sillaton Farm, North Pillaton on Monday 14 May. For further details please ring 01579 382762 or 382512. And advance notice of a date for your diary - the club's popular annual plant sale will be held in St Ive Village Hall on Saturday 26 May; doors open at 1.30pm.

MOBILE LIBRARY

The County Mobile Library visits our area once a month on Fridays of "Week 3" (NOTE: not necessarily the 3rd Friday of the month).



Next visits: 11th May, 8th Jun, 6th Jul.

**Stops at:
The Victoria Inn, Pensilva at 10.25 to 10.45am;
Quethiock bus stop. 11.00 to 11.20am.**

COMMUNITY COFFEE SHOP

in MILLENNIUM HOUSE PENSILVA

THE COFFEE SHOP IS NOW OPEN AT THE FOLLOWING TIMES:

MONDAYS 10.00am - 1.00pm

TUESDAYS 9.00am - 1.00pm

WEDNESDAYS 9.00am - 12 noon

FRIDAYS 9.00am - 12 noon

Pensioners Lunch

2 Course Meal plus Tea or Coffee

Only £5.50

Every Tuesday here at Millennium House

Speak to our reception or

telephone Graham on 01579 363096



So why not join us for Good Food and Good Company, all on the day you collect your pension?



FREE COMPUTER TRAINING

Want to "get connected"?

**Need help with your tablet or
smartphone?**

**Drop in to our open days at the
Millennium House on the 15th &
24th of May (10am-12pm, 2-4pm)
with your issues.**

**There'll be free tea and cake, and
the opportunity to sign up for
completely free computer classes.**

Don't miss out!

**Organised by Pensilva Community Association, in conjunction with V Learning
Net, both registered charities. For more information call 01566 770729**

FRIENDS OF PENSILVA HEALTH CENTRE
ANNUAL GENERAL MEETING
TUESDAY 15TH MAY 2018 AT 2.P.M.
MILLENNIUM HOUSE, PENSILVA
EVERYONE WELCOME

The Annual General Meeting of
PENSILVA HEALTH AND FITNESS
ASSOCIATION LTD

also known as *All Being Well*

will be held on Wednesday, June 6th, 2018 at
7:30pm in Millennium House, Pensilva.

The agenda is on display in the gym. All
members are encouraged to attend. Members of
the general public are welcome.

Supporting Guiding & Scouting Activities in Pensilva
200 CLUB Draw Results for March

1st No. 161
Mrs. H Clatworthy

2nd No 89
Mr I Lieper

3rd No 129
Mrs K Hocking

Thank you for your support

Pensilva Carnival Day 2018

Saturday July 7th

Any groups who would like to organise events in the preceding week, as part of the carnival, please contact **Karen on 01579 362196.**

Organised by Millennium House Events Group

The 41st St Ive Village Show

Saturday 1st September 2018

opens at 2.30pm in St Ive village hall

Entries open to all

Adult classes for Flower Arranging, Cookery, Vegetables, Cut flowers, Houseplants, Handicrafts, Photography, Art and Young people's classes (up to 16yrs)

Entries to be submitted between 6 pm and 8.30pm on Thursday 30th August, or in advance

Schedules available from mid April

by email from Sally at sales@keasonplantservices.com

or at the Coffee Morning on Wednesdays in the village hall

or from Jayne (382512) Veronica (382762) Katherine (382334)

St Ive and District Gardening Association

MILLENNIUM HOUSE EVENTS COMMITTEE PRESENTS

FREE
EVENT

**MILLENNIUM
HOUSE
20TH
ANNIVERSARY
TEA PARTY**

**BANK HOLIDAY
MONDAY, MAY 7th
2PM - 5PM**

**FREE PASTY
& CREAM TEA**

<https://millenniumhouse.org.uk>

Ruth and Colleen's Monthly

BINGO

At Millennium House

on Tuesday 8th May

Then 5th June

Eyes down at 7:30pm

Over 18's only

£££ CASH PRIZES £££

Pensilva Folk Session

Monthly, 2nd Thursday

Next Session 10th May 2018, 8pm

Mel Bar, Millennium House

**Informal 'singaround' all singers/musicians welcome or
come along and tell a joke, a story or just listen**

Further Details

Steve 07410 447818

steve@stevesutton.plus.com

Supporting
children's hospice
SOUTH WEST
Registered Charity No. 1003314



An evening with...

JOHNNY
COWLING

ELIOT HOUSE, LISKEARD

FRIDAY 11TH MAY 2018
AT 7.30PM

Ticket only event

£12.50 including Pasty Supper

Contact Pat

on 01579 362959

FUN SKITTLES EVENING

At Millennium House, Pensilva
Friday May 25th, 2018

6-8pm for under 18s & 8 till late for seniors.

- ✓ Everybody welcome - beginners to experts
- ✓ Two alleys - games to suit all abilities



Skittles is a big thing around here, for men and women: the local ladies have been British champions twice and there are several league teams based at Millennium House. We are keen for more people (especially young people!) to take up the game. If you find that you like it and are interested in playing regularly, you will be able to talk to some of the team players.

**If this evening is a success, we will
organise similar events in the future...
meanwhile ... come and give it a go!**

More details from Joe Bicarregui:

01579 364016 or joe@prolinguists.com

QUIZZES AT MILLENNIUM HOUSE

NEXT QUIZ: SATURDAY JUNE 9TH, 7:30PM

Then: Tuesday July 9th, (Pensilva Carnival Week),
September 1st, October 13th, December 8th

All at 7:30pm

Organised by and raising funds for

All Being Well

Improving the health of our community

ST IVE SINGING GROUP



EVERY THURSDAY 4-5.30PM AT ST IVE VILLAGE HALL

NO EXPERIENCE NEEDED, ALL WELCOME

OLD SONGS TO NEW TUNES, FROM FOLK TO POP.

SIMPLE (HOPEFULLY TUNEFULL) FUN!

PLEASE CONTACT CLARE: 01579 382341

OR EMAIL: CONTACT@CLARENORRISH.COM

WEBSITE: clarenorrish.com

CHARITY MUSIC NIGHT
WITH
THE LOST COUSINS

MILLENNIUM HOUSE

PENSILVA

FRIDAY 29TH JUNE 2018

8.00PM

FREE ENTRY

DONATION BUCKET

This event is being organised by Nick Horler to raise funds and awareness of **Motor Neurone Disease**

In July a group of family and friends are taking on The Jurassic Coast Challenge a 100Km walk over 2 days in memory of Jeremy Durrant, who lost his fight to this dreadful disease.

The logo for the Motor Neurone Disease Association (MNDa) features the lowercase letters 'mnd' in a dark blue, sans-serif font, followed by a lowercase 'a' in a bright orange color.

motor neurone disease
association

PENSILVA GROUP MEETINGS NOW AT 5:30pm AS WELL AS 7:30pm

be inspired
with
**Slimming
World**



MONDAY PENSILVA 5:30 and 7:30 pm
The Millennium Centre, Princess Road,
Pensilva, Liskeard PL14 5NF.
Tel: Hayley **07966 370233**

TUESDAY LISKEARD
9:30am, 11:30am, 5:30pm or 7:30pm
Lower Hall, Church St., Liskeard
PL14 3AQ. Tel: Vicki **07973 402829**

WEDNESDAY LISKEARD 9:30am
Liskeard & District Sports Association,
Lux Park Coldstyle Road Liskeard
PL14 3HZ. Tel: Sammy **07807 289801**

THURSDAY DOBWALLS 5:30 or 7:30pm
Dobwalls Football Club Dobwalls Liskeard
PL14 4LU. Tel: Sammy **07807 289801**

FRIDAY GOLBERDON 9:30am
Golberdon Village Hall Nr Callington
PL17 7ND. Tel: Jane **07769 734316**

  
slimmingworld.co.uk



PENSILVA WEDNESDAY CLUB R.V.S

**Meet in Pensilva Village Hall at 2.30.p.m. on alternate
Wednesdays**

**All Adults welcome to join - £1 per meeting –
Refreshments - Various activities - Entertainment -
Coach Trips - Raffle**

**Wed. 30th May - Coach trip to Boscastle & Tintagel
Leave Millennium House 9.30.a.m.**

**Wed. 13th June - Coach Trip to Trago, Newton Abbot
Leave Millennium House 10.00 am.**

Information: please contact Jane Mann 01579 362960

St Ive Church Produce Market

Every 1st Friday 10:30 to 1:30pm

Homemade Cakes Fresh Vegetables

Jams Pickles Local made Pasties

Bric-a-brac and much more - also

Home Reared Traditional Meat

Pork, Beef, Chicken, Dry Cured Bacon, Sausages from

Trehill Farm Produce

Cooked Lunch available from 11:30 only £4.50

Pensilva Memory Café

Are you caring for someone with Dementia, or do you perhaps have concerns about your own memory? It can be lonely and worrying but you're not on your own. Many people around you are in the same boat. You don't have to feel isolated. More people than ever are becoming dementia aware, and most organisations need, and want, to be dementia friendly.

You may have seen posters for Memory Cafes and wondered what they are about. They are a great place for people with dementia and memory problems to socialise in an informal and friendly atmosphere. Memory Cafes are held in Liskeard, Callington, Launceston, Downterry, Looe, and many more places in the South West. Most are held monthly, some are more frequent.

Pensilva has its own Memory Cafe. It is a small friendly group who meet once a month for tea and cake and a bit of relaxing fun. We might have some music, a simple game or quiz, and a bit of reminiscing. You can join in if you want to, but nothing is compulsory. We hope you will just relax and not worry about anything for a couple of hours. There is no charge but we do appreciate a donation in the region of £1 each towards expenses.

It might be worth coming along to join us just to see what goes on. You might find it beneficial to yourself, or your partner, or a parent, or friend. You might even enjoy it. Why not give it a try? You'd be most welcome. There's nothing to lose.

We meet on the fourth Thursday of each month from 2pm - 4pm. We'd love to see you at St John's Church, next to the Millennium Centre, PL14 5NF.

For more information contact Carolyn or Pat - 01579 363461 or 01579 362698
email carolynandgeoff@gmail.com or patdilworth@hotmail.co.uk

If you are a carer of anyone, of any age or condition (not just dementia), you will benefit enormously from the help of Kernow Carers Service. Freephone 0800 587 8191. Leaflets are available at the cafe.

Alford Joinery - For all your joinery needs

Specialists in bespoke doors, windows, staircases, conservatories, etc.

- 20 years experience
 - Large or small jobs
 - All joinery hand-crafted
 - Top quality FSC certified timbers
 - All joinery can be fitted if required.
- 01208 873444 or 07757 666460
info@alfordjoinery.com
www.alfordjoinery.com

Badminton?

Come and join our relaxed and friendly group at Pensilva Millennium House

Mon & Tue 7.30 - 9.30pm

Friday 8.00 - 10.00pm

For further info phone

Nigel or Carol on

01579 363594 or

07885 798370

All Being Well

Your local, friendly gym.

Over 18 years working in our local community to improve health, fitness and well being.

Call **01579 363890**, drop in at Millennium House, Pensilva, or email abwgym@gmail.com

Opening hours:

Mon/Fri 10am-3pm & 5pm-9pm

Wed 10am to 3pm

Tues/Thur 9am to 1pm

Saturday 10am to 1pm

Ask about GP exercise referrals!

PENMILL ART GROUP

We are a small, friendly group using all art mediums. If you paint we would love you to join us.

We meet at

Millennium House

10-2 every Monday.

Please come & see us or phone Pam on

01579 363441.

LISKERRET MALE VOICE CHOIR

We are currently looking for new members in all sections. No previous experience necessary.

Practice Mondays 7:30pm at the Royal British Legion, Liskeard.

Enquiries to the secretary on

01579 363881

Email: charaton@btinternet.com

Website: www.liskerretmvc.org

Charity No. 1120243

PENSILVA VILLAGE HALL

Anyone wishing to book the hall for meetings, birthday parties or fundraisers please contact Peter or Jackie Browning on **01579 363212** or email **peter@pensilva.freeserve.co.uk**.



Please note that as well as hall rent there is a coin meter for heating at 40p/hr.

We hold a Hall users and committee meeting on the fourth Monday of each month at 7.00pm. Please feel free to come along and support us.

Organisations that meet in Pensilva Village Hall

Meeting Times	Organisation	Contact Person	Telephone
Mon. 4:00 - 6:00	Brownies	Mrs Martha Oliver	01579 362239
Alternate Wed. 2:30 - 4:00	Wednesday Club	Mrs Jean Conner	01579 363221
Wed. 7:00 & various	Snooker Club	Mr Philip Bond	01579 362091
Thu. 6:00 - 8:00	Guides	Miss Caroline Hambly	01579 363228
Fri. 1:00 - 3:00	MIMS	Chris	01579 343702
Fri. 4:00 - 5:00	Rainbows	Mrs Lynne Bond	01579 362091

St Ive Institute & Village Hall

Every Wednesday	10:30am to 12 noon 10:30am to 11:30am	Coffee morning Travelling Post Office
First Monday	7:30pm	St Ive Gardening Club
Every Monday & Thursday	7:00pm	St Ive Snooker Club

**NHS
REGISTERED**



**SUPPORTED BY
LOCAL DOCTORS**

Do you suffer with various long term health conditions?

Come along and join our small, friendly group.
For company, light exercise and support.

Upstairs in Millennium House every Monday from 12.30pm - 2.30pm

For more information contact us:

Pauline **01579 345989**

Jeanette **01579 363691**



The **co-operative**
Community Fund



Struggling with Sight Loss?

iSight Cornwall offers practical help to people living
with sight loss in Cornwall including:

Low Vision: Advice for low vision aids

Assistive Technology: Advice on products

Benefits Advice: Assistance to claim entitlements

Equipment Demonstration: Advice on gadgets

Social Clubs & Activities: Links to clubs & activities in the county

For more details Telephone 01872 261110 or visit

www.isightcornwall.org.uk

DO YOU NEED A HELPING HAND?

Reliable, Friendly, Experienced, Mature local resident offering the following services:

Cleaning **Ironing** **Shopping**
Light Gardening **Dog Walking**

CRB/DBS checked and fully insured. Competitive rates.

Contact Jess: Telephone or text: 07934 764 327.

Email: homeangel77@yahoo.com.



Find us on Facebook



PENSILVA HEALTH CENTRE - PATIENT PARTICIPATION GROUP

We are a group of patients who meet regularly with the Health Centre to bring forward for discussion ideas, comments and suggestions about your surgery. In the past we have held open days, helped at the flu clinics and participated in a trial Peoples Commissioning Board Project.

We also organise a Carer's and bereavement group (see below) and a 'Walking for Health' group

(Contact Ivor Vaughan 07979 934604).

You can contact us directly or through the Health Centre.

PENSILVA HEALTH CENTRE CARERS AND BEREAVEMENT GROUP

Are you a carer, bereaved or lonely? Then come along and join our Group. Tea, Coffee and plenty of friendly chat and, when possible, local trips to various venues.

**Meetings are held every third Thursday of each month at 11.30.a.m.
Meet in Millennium House car park.**

For any information please contact Jean Connor 01579 363221

St Ive Church

Services at 11:15am Every Sunday

- May 6th** **No Service at St Ive. Together at Ten at Menheniot 10am**
- May 13th** **No service at St. Ive. Together at Ten at Merrymeet 10am**
- May 20th** **Holy Communion Lunch follows this service**
- May 27th** **Morning Worship**

Note. The Together at Ten services on 6th and 13th are to cover Rev Margot's holiday.

.....

Other May Events

- Fri 4th** **Produce Market and Bric-a-brac 10:30**
Home made cakes etc, fresh vegetables, locally made pasties, pickles, jams and much more. **Farm fresh meat from Trehill Farm Produce.**
- Sun 20th** **Lunch in Church 12:45pm. All welcome. Only £7 for 2 courses.**

Reverend Margot Davies **01579 208698** email margotaj@tiscali.co.uk

Church Wardens Brian Dwelly **01579 364010** btdwelly@aol.com

 Colin Catchpole **01579 383867** ccatchpole@hotmail.com

Please let the Priest or Churchwarden know of anyone requiring a home or hospital visit

Donations for Liskeard Food Bank can be left in the Church each day between 10am & 4pm

ST JOHN'S CHURCH, PENSILVA

Services for May 2018

Anglicans and Methodists share services at 11 am each Sunday, coffee served before service

Sunday 6th	(9.30am	Anglican Benefice Eucharist at St Cleer)
	11 am	Mrs Anita Nicholson
Sunday 13th	11 am	Café Church
Sunday 20th	11 am	Anglican Holy Communion
Sunday 27th	11 am	Rev. Sue Hill
	5 pm	Food for Thought at St John's Church

Café Style Church followed by coffee and chat, Thursday mornings, 10am, everyone very welcome.

Afternoon Tea, Friday 4th May at 3pm. Cup of tea and a chat. Everyone welcome.

Christian Aid week. 13th—19th May. Envelopes available from St. John's Church and Pensilva Stores.

Bluebell Walk and Pasty Supper for Christian Aid on Monday 14th May, 7pm at Penharget Cottage. Come and enjoy a walk through the woods.

Con Brio Concert on Wednesday 16th May 7:30pm at St John's Church, followed by refreshments.

Fellowship Group Contact Carolyn on 362698 for details.

Prayer Group: 2pm Fri 4th & 16th May. Please ring Eileen on 362580 or Carolyn 362698 if you would like prayer for yourself or someone else.

For further details of the Services held in St John's, if you know of any illness or need in the village or if you would like your wedding or baptism in the church, please contact:

Geoff Cox - 362698 or Frances Tucker - 363718



SEW, KNIT AND NATTER.
WHY NOT JOIN US ON
THE LAST TUESDAY OF EACH MONTH
for sewing, knitting or just for a chat and a
cup of tea or coffee and cake. ²⁷

We meet at ST JOHN'S CHURCH, PENSILVA from 2pm to 4pm.

St Ive Methodist Chapel

Services for May 2018

- Sun 6th May** 11am United Circuit Service at Saltash Wesley
 6:30pm United Rural Church Service at Bealbury MC.
- Sun 13th May** 11am Local Arrangement
- Sun 20th May** 11 am Mr Noel Morgan
- Sun 27th May** 11 am Rev Iris Bray with communion
 5pm “Food for Thought” at St John’s

For regular updates on services etc at the Chapel, as well as around the area, look at the St Ive Methodist Church Facebook page.

Village Churches Together group will meet 7:30pm at St John’s Church Pensilva on Tuesday 22nd May. Everyone welcome. More details from Keith on 01579 382334.

The Chattermakers Group will meet on Thursday 10th and 24th May in the Guild room from 7:30pm. This is a group open to anyone that likes to do any craft and would like to share with others of a like mind (hence the ‘Chatter’ bit!!) More details from Kathryn on 01579 382334. All welcome.

The Village Church Prayer meeting will also be held at St Ive Chapel on Thursday 10th and 24th May from 7:30pm. All welcome

Trerosa Studios

Pottery & Woodturning activities for you to enjoy

Well equipped

All materials provided

Help / tuition from qualified teacher if required

01579 647247 or 07486 089466

Email: bob@trerosacrafts.co.uk www.trerosacrafts.co.uk

Tom Marshall

TM Plastering

Plasterer and Property Care

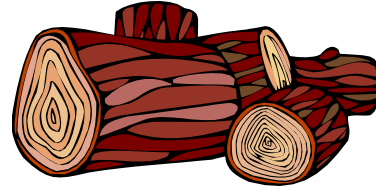
07544819284

Tommarshallcornwall@gmail.com

Free estimates

- Internal plastering
- Internal / external rendering
- Damp proofing
- Stud Walls
- Patio laying
- Chimney repairs
- Pointing
- Painting

SEASONED LOGS



MIXED LOAD
or
HARDWOOD

Tel Jonathan

Mobile 07966 070725

or
01579 363157

Also tree/hedge work
undertaken

DAVID HEWETT GARDEN SERVICES

For all aspects of garden care:

lawn mowing, grass cutting,

strimming, hedge cutting,

clearance, and more.

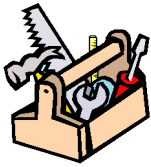
01579 363796

25 years experience.

Fully insured.

KEEP IT TIDY

General Property Maintenance
including Decorating, plus Electrical



HONEST PRICE
for
QUALITY WORK.



No Job Too Small

Kit Rickard

18 Higher Glen Park
Pensilva

Phone: 01579 363378

Mobile: 07855 699071

Email: KITKeepItTidy@hotmail.com

Chiropodist

Fully qualified, experienced and
insured Chiropodist/Podiatrist

- Nail cutting, corns/callus,
diabetic foot care etc
- Personal home visits, groups
and residential homes

Contact Clare:

07757973709



ADVERTISE HERE!

This box for just **£15 per month** including VAT.

10% discount for a 12 month order.

i.e. **£11.25 + VAT** per month for 12 months

See the full tariff on page 3

One thousand copies per month distributed free of
charge to households in the Parish of St Ive.

Alphaplas Limited t/a
Trims&Windows

www.trimsandwindows.co.uk

Double Glazed uPVC
Windows-Doors-Conservatories
'Conservation' vertical sliders a speciality



Supply only to Trade & DIY or
Full installation registered with

FENSA inc
10yr insurance backed guarantee



Email: alphaplas@btconnect.com

01752 840078

Installation team based in
Pensilva, Looe & Torpoint

Owna

Mobile Device and PC repair

07766013897

alex@owna.co.uk



For repair of mashed mobiles, trashed tablets, or poorly PC's visit www.owna.co.uk or call Alex for a free quote, no fix no fee

MARK FITCH CHIMNEY SWEEP

- * BRUSH & VACUUM
- * CLEAN, RELIABLE SERVICE
- * COVERING ALL S.E. CORNWALL
- * DISCOUNT FOR MULTIPLE CHIMNEYS
- * COWLS & GUARDS FITTED
- * STOVES SERVICED



*Call
Mark on:*



01579 350762
07773 462643



Affordable Counselling

**Caring, confidential,
non-judgemental**

- Increased confidence and self esteem
- Help to cope better at difficult times
- Improved relationships
- Clarify confused thoughts & feelings
- Assertiveness
- Personal insight
- Improved emotional health
- Available for youth and adults

**Isabelle McGarahan BA, PGCE
Dip in Therapeutic Counselling,
Member of ACC, DBS cleared**
www.im-counselling.org email:
isabelle@im-counselling.org
01579 344090/07857326229



**Patchwork and Quilting fabric shop.
Contemporary fabrics from leading
Brands Lewis & Irene, Michael Miller,
Riley Blake, Robert Kaufman, Blend
Fabrics & Dashwood Studios.**

**Unit 4 -5 Holwood Business Centre
Holwood Farm**

Blunts

Cornwall

PL12 5DW

Opening hours:

Friday 10-4

Saturday 10-5

Sunday 11-4

www.sewinspiredplymouth.co.uk

**Follow us on Facebook and
Instagram.**

PENROSS

**Rosecraddock Lodge Holiday Bungalows
(Between Pensilva & Liskeard)**



**Ideal for visiting family and friends !
Refurbished in 2018. Sleeps 4. Electric,
heating, bedding and towels inc in rent.
Patio. Free wi-fi. Follow us on Facebook.**

Sorry no pets and no smoking.

**Contact Julie Tucker 01579 362221 or
penhargetfarm@gmail.com
for 15% discount**

NICOLA GREENE

BSc (hons) Podiatry MChs

HPC Registered Chiropodist/Podiatrist

**Home Visit Practice treating all
your foot care needs:**

- Nail Cutting
- Corns and Calluses
- Thickened Nails
- Dry Cracked Skin
- Verrucae
- Foot Pain
- Diabetic Foot Assessments
- Wound Care

T: 01579 590027

T: 01752 291565

M: 07786164205

E: nicki_greene@yahoo.com

Group Travel

Enterprise Park, Midway Road, Bodmin
Cornwall PL31 2FQ. Tel: 01208 77989



2018 COACH EXCURSIONS

22nd MAY - KILLERTON HOUSE & GARDENS
19th JUN - HELFORD RIVER CRUISE
2nd - 6th JUL - LLANDUDNO TOUR
22nd JUL - EXMOUTH SEA CRUISE
4th AUG - COUNTRYFILE LIVE
5th AUG - FESTIVAL OF BRITISH EVENTING
21st AUG - DARTMOOR ZOO
25th - 26th AUG - DORSET STEAM FAIR
31st - 2nd SEP - BURGHLEY HORSE TRIALS
11th SEP - WIDECOMBE FAIR

15th SEP - TOBY'S HARVEST FESTIVAL
27th - 1st OCT - SHROPSHIRE BY COACH, RAIL & CANAL
3rd NOV - BRIDGWATER CARNIVAL
17th NOV - FESTIVAL OF LIGHT @ LONGLEAT
23rd - 26th NOV - TURKEY & TINSEL @ BOURNEMOUTH
24th NOV - CLARKS SHOPPING VILLAGE, STREET
8th DEC - BATH CHRISTMAS MARKET
16th DEC - MOUSEHOLE & ANGARRACK LIGHTS
2019
26th APR - 1st MAY - ISLE OF MAN SPRING TOUR

16 TO 70 SEAT COACHES AVAILABLE FOR PRIVATE HIRE. CORPORATE/ VIP, EVENTS & CONFERENCES, WEDDINGS (CAN INCLUDE STAG & HEN PARTY PACKAGE), HOLIDAY TRANSFERS, FUNERALS, DAYS OUT, GROUP TOURS, GOLFING HOLIDAYS & SPORTING EVENTS.

FOR BOOKINGS AND A BROCHURE PLEASE CALL

01208 77989 / 01208 72669

Website: grouptravelcoachhire.com Email: grouptravelcornwall@btconnect.com

SCOTT BERRIDGE

Complete Property Refurbishment & Building Maintenance

INTERNAL & EXTERNAL DECORATING
PAPER HANGING • TILING SPECIALISTS
PLASTERING • PLUMBING • CARPENTRY
FENCING • DECKING • PATIOS

- Local Pensilva • 25 years experience in Cornwall.
- Proper job • Clean & Tidy • Good references
- Trustworthy • Excellent prices. • Free estimates.

scottberridge@me.com

07889 218 710 (Daytime) 01579 362 006 (evenings)

INDEPENDENT
FAMILY
FUNERAL
DIRECTORS



Undertaking your individual
needs with efficiency,
compassion and care...

Perfect Choice Prepayment
Funeral Plans from £3249.00

(Prices correct as at 01.01.2019)

01579 362358



Avalennek, Caradon Town,
Upton Cross, Liskeard
Cornwall PL14 5AR

Telephone 01579 363598

Mobile 07901 538132

chrisrounsevell@tiscali.co.uk

HOG ROAST EQUIPMENT HIRE AND MEAT SUPPLY

Hog Roasts For Those Special Occasions
Self Catering or Hassle Free Service
Everything done to your special requirements

CHRIS ROUNSEVELL
TRADITIONAL BUTCHER



Local Accountant offering fixed fee accounting services

With over 20 years experience, I am a fully qualified, friendly, local accountant

- ✓ Annual Accounts for Sole Traders and Partnerships
- ✓ Book Keeping & Payroll
- ✓ Personal Tax Planning
- ✓ Company Accounts
- ✓ Business Support & Advice

- ✓ Self Assessment tax returns
- ✓ iXBRL tax filing
- ✓ Tax investigation Fees Insurance
- ✓ Company Secretarial work
- ✓ Tax calculations for Sole Traders and Partnerships

Kate Vaughnley FCCA - Chartered Certified Accountant

Website : www.kvaccountingsolutions.co.uk or Email : katevaughnley@gmail.com
Telephone : 01579 364083



GRAB LORRY HIRE

PLANT HIRE & GROUNDWORKS

07970 270218 | 01579 344402

**MORE COST-EFFECTIVE THAN SKIPS
FOR SOIL, RUBBLE & GREEN WASTE
REMOVAL!**

CAN REACH OVER WALLS &
FENCES FOR COLLECTION
FROM INACCESSIBLE AREAS

SKIP BAGS AVAILABLE FOR
SMALL JOBS





Computer Tamer

Home help

for all your Computing needs.

01579 320547 t.bedden@btinternet.com

Down to earth, jargon-free tuition, advice, repairs, troubleshooting, upgrades & installation.

Puzzled by email setup, anti virus, backing up photos or any other aspect of using your machine?

Need that computer set up or repaired?

Need a website designed or updated?

For all this and more call Tony for a free chat about your needs. I can visit you at your home. A reasonable hourly rate with a 1 hour minimum to cover travel costs. Talk to you soon.

Window Cleaner Window Cleaner

Also any upvc cleaned

i.e. fascias, gutters, etc.

gutters cleared & unblocked

Please phone Rob

07709 053464

Window Cleaner Window Cleaner

Save Costly Energy!



SOLARTEC

Windows & Conservatories Ltd

'A' Rated WINDOWS & DOORS at BEST PRICES EVER!



Professionally fitted and finished by us with a

FENSA REGISTERED 10 year ins. guarantee.
In all colours



NEW

FACTORY SHOP SUPPLY ONLY

For all your windows, doors, conservatories, fascia, trims, guttering and sealants

7-10 DAY TURN AROUND ON WINDOWS, DOORS and CONSERVATORIES

TEL: 01579 343425

FAX: 01579 344500

WEBSITE: www.solartecwindows.co.uk

EMAIL: sales@solartecwindows.co.uk

KEEPING JOBS IN CORNWALL



PJR Garden Services

Phil Rule

All aspects of garden work - grass / hedge cutting, patios, fencing etc.

Mobile 07387 449004

OPEN FOR RETAIL, TRADE & COMMERCIAL ENQUIRIES

CORNWALL TILE CENTRE

www.cornwalltile.com

tileitalia

The Natural
TILE & STONE COMPANY

BESPOKE
TILE IMPORTS



Tiles & Stone for:

- ◆ Bathrooms & Kitchens
- ◆ Living Areas
- ◆ Conservatories
- ◆ Patios & External Areas
- ◆ Wet Rooms & Spas
- ◆ Swimming Pools
- ◆ All Commercial Applications

- ◆ Local & National Delivery Service
- ◆ Sample Loan Service
- ◆ Free Quotations
- ◆ Free Design Ideas & Planning Advice
- ◆ Trade Enquiries Welcome
- ◆ Wet Room Specialist
- ◆ Full Range of Adhesives & Grouts

Pensilva Showroom

Open Mon - Thurs 8.30am - 5pm
Friday 8.30am - 3pm
Saturday 9.00am - 1pm

Wadebridge Showroom

Open Mon - Fri 9am - 5pm
Sat 10am - 3pm



**01579
362264**

DISCOUNT TO ALL PUMP READERS



The
**RACEHORSE
INN**



Gastro Pub

Head Chef Phillip Bradshaw

Ray and Flori welcome you to
the Racehorse INN

A fine food experience in a convivial
atmosphere

Our superb Sunday lunch is one to be tried

Open Every Day for Lunch and Dinner

info@racehorseinn.co.uk
www.racehorseinn.co.uk

Take-out: Pizzas & Fish'n'Chips now available



North Hill Village, Cornwall, PL15 7PG

01566 786 916

J. H. Simmons

Painting & Decorating



Interior
&
Exterior



No Job Too Small

References Available

For more information
Please call John
01579 362688

7 East Park, Pensilva

D.J.A. BUILDING SERVICES

ALL ASPECTS OF PROPERTY
MAINTENANCE BUILDING &
REFURBISHMENT

- * Bespoke Furniture and Kitchens
- * Wardrobes and Bookcases
- * Garden Sheds, Poultry Houses & Small Animal Shelters
- * Over 30 years' experience
- * Fully insured
- * References available
- * Free estimates
- * No VAT

**Call David on 01579
364050 / 07767662635**

Westwood Garden Maintenance



Antony Watts

Grass Cutting, Clearance

Weeding, Turfing

Hedge Cutting

Patio Cleaning, Planting

Regular Visits / One-off Contracts

Residential & Commercial

FREE ESTIMATES

01579 362019 www.westwoodgm.co.uk 07952 094472

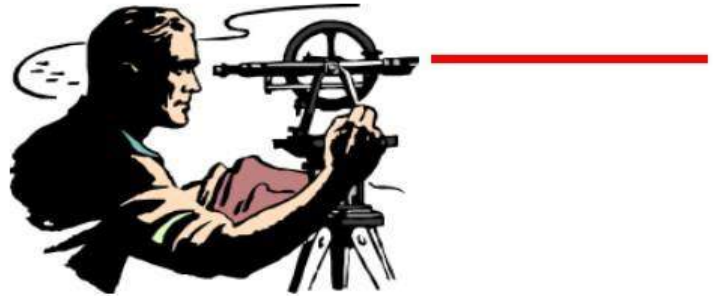
Martin Hoare – Local, Reliable, Competitive



WHEEL DIGGER FOR HIRE
ALSO AVAILABE 'BREAKER'
AND NEW CONCRETE
'CRUSHER BUCKET'

ALL AT COMPETITIVE RATES

GROUND WORKS
DRAINAGE
NEW DRIVEWAYS
SEPTIC TANKS &
'SOAK AWAYS' INSTALLED



LASER LEVEL FOR HIRE
QUOTES AVAILABLE



Phone 01579 363517

or

Mob 07863 291213



Steve West Aerial Services

Installations / Repairs to
TV Aerials, Satellite Dishes
and Radio

Customised to your requirements

Wireless network &
Mobile phone extensions

TV mounting on walls
Help setting up systems
and demonstrating.

Phone 01726 212761

Mobile 07941 606 183

e-mail stevewestaerials@uwclub.net

CORNWALL PET SERVICES

HOME BOARDING FOR DOGS
DOG WALKING
HOME VISITS

Situation: Between Liskeard and Callington

- Home Boarding for Dogs – safe home environment, off-road walking
- House calls to suit your family pets
- Dog walking
- Fully insured
- Police Checked

Chris Day
Birchill
Quethiock
Liskeard Cornwall
PL14 3SQ
Tel 01579 340438

Email – cornwallpetservices@gmail.com
www.cornwallpetservices.wix.com



THE HOME OF WOOD



**OPEN TO THE TRADE & PUBLIC
FOR ALL YOUR HOME AND GARDEN NEEDS**

**DECKING • FENCE PANELS • OAK FLOORING • STRUCTURAL TIMBER
GARDEN FURNITURE • GATES • DOORS • CEDAR CLADDING**

TELEPHONE 01503 240308

EMAIL: STACY@WHBOND.CO.UK

WWW.BONDTIMBER.CO.UK

TRERULEFOOT • SALTASH • PL12 5BW

DOG GROOMING

40 YEARS EXPERIENCE



**SMALL and MEDIUM Dogs
Groomed to Your Request**

**LISKEARD AREA
Inquiries Welcome**

**Call Patricia: 07517 658862
TO YOU OR TO ME**



Domestic Electrical
Property Maintenance
Interior & Exterior Work
Carpentry :: Decking
Kitchens :: Bathrooms
Wall & Floor Tiling
General Plumbing

MCCARTHY PROPERTY MAINTENANCE

**Electrical Safety
Register** incorporating
ELECTSA  ECA
Certification Ltd

**HIGHLY REGARDED LOCAL BUILDER
COMPETITIVELY PRICED
COVERING THE SOUTH WEST**

Contact Dominic

07968 599 675

01579 362 945

info@mccarthypropertymaintenance.co.uk

www.mccarthypropertymaintenance.co.uk

VISIT CALLINGTON

A Fair Trade Town

**Whether you need white goods or carpets for your home,
or need to mark a special occasion, with a gift or card,
you can find it in Callington. From a light bite in a tea room or
Cornish Pasties to take away to dinner in a restaurant.**

From antiques and curios, bicycles and D.I.Y. to bridal wear.

A great choice of independent specialist shops.

There is so much more - Visit to see for yourself

Callington Traders Association



**SHOP LOCAL
AND KEEP CALM**



Pensilva Stores

Amazing Value

Premier
a great deal more from your local store
Mon-Sat. 7:00 AM. – 9:30 PM.
Sunday 8:00 AM. – 9:30 PM.

- ✓ Fantastic Special Offers every month!!! (See store leaflets)
- ✓ Come and Check out our great deals on Wine, Beer and Spirits
- ✓ Local Produce: Homemade Butter and Clotted Cream, Meat from our local butcher
- ✓ Cornish Fresh Fruit and Vegetables
- ✓ Fresh Bread, Pasties and Cakes
- ✓ Take Away Coffee, tea and hot chocolate
- ✓ Newspapers and Magazines, Greeting Cards
- ✓ Paypoint, Lottery

*** Free to use ATM ***
*** Card Payment ***

Friendly Staff + Service with a Smile !!!

Pensilva Stores is a family run business who have been serving local people and visitors for more than 21 years.

Higher Road, Pensilva, Liskeard, Cornwall PL14 5NQ

Tel: 01579 362547

MENDOLOGY Garage Door Specialist

- Repairs
- Servicing
- Installations


Out of hours service
call Dave anytime 07974 442645

MENDOLOGY COMMERCIAL DOORS LTD
www.mendologydoors.co.uk

01579 363760

PensilvaCars

01579 363516

- ✓ MOTs Class 4
- ✓ Service
- ✓ Repair
- ✓ Tyres
- ✓ FREE Courtesy Car
- ✓ Car & Van Sales
- ✓ Diagnostics
- ✓ Air Conditioning
- ✓ 

We have offered a supply, fit & balance of tyre service for 10 years at competitive prices.

Most of our tyres can be supplied the same day.

LOCAL RECOVERY £45.00

www.pensilvacars.co.uk

pensilvacars@hotmail.co.uk

We can service and repair your car to manufacturer specification, keeping your dealer warranty without main dealer expense.





KEITH RICHARDS

Motor Body Repair Specialists

A family run business with fully equipped & maintained workshops & a focus on
Customer Care

- ◇ Motor Body Repair Specialist
- ◇ Mechanical Repairs
- ◇ Servicing to All Makes & Models
- ◇ Computer 4 Wheel Alignment
- ◇ 24 Hour Recovery Service
- ◇ Renovations & Re-sprays
- ◇ Member of RMI (Retail Motor Industry Federation)
- ◇ Latest Diagnostics (including specialists for VW, Audi, Seat, Skoda & Vauxhall)

With over 30 years' experience we aim to provide you with:- Value for Money -
Friendly Service - Professional Approach - Expert Advice that you Can Trust
(Visit our website for more details)

Pensilva Industrial Estate, St Ive Road, Pensilva, Liskeard, Cornwall PL14 5RE

Tel: 01579 362593

Email: keith@keithrichardsmotorbody.co.uk

Fax: 01579 363194

Website: www.keithrichardsmotorbody.co.uk

Wm. Newham & Sons Est. 1835

Proprietor Robbie Savill AWCB

CHIMNEY SWEEPS & BLACKSMITHS



CHIMNEY SWEEPING

BIRD GUARDS, COWLS & POTS FITTED

CCTV INSPECTIONS & SURVEYS

STACK REPAIRS & REBUILDS

RIGID STEEL SYSTEMS ERECTED

STAINLESS STEEL and PUMPED CONCRETE
CHIMNEY LINING

STOVES SUPPLIED, INSTALLED & REPAIRED

FIREPLACE ALTERATIONS & RENOVATIONS

FULL RANGE OF FIREPLACE FURNITURE
made to order

01579 347777

need somewhere to stay ?
between homes ?
family/friends visiting ?



ideal for Pensilva
& St.Ive

please call Jackie on
01579 362216

J.J.CHILD

PLUMBING AND HEATING ENGINEER

OIL AND GAS APPLIANCE SERVICE , REPAIR AND BREAKDOWNS

LANDLORD'S CERTIFICATES

OVER 25 YEARS EXPERIENCE
CALL JOHN ON 01579 362336
MOBILE 07837921086



502322

Bargain Corner Free Ads up to £50

Ads are free for items up to £50. £5 charge for items over £50. Please ring the Parish Office on **01579 363096** or leave a note at Millennium House reception or email **parishpump@btconnect.com**.

*****Please let us know when your item has sold*****

Car Ramp 6' long. Folds in half. Unused. Good for loading mobility cars. **£49.**
01579 384222 or 07828 016665.

Wood-framed **mirror** 2'6" x 3'7". **£10.**
Bench saw £15.
Electric strimmer. £10
240 litre **wheelie bin** for garden waste **£8**

Child's garden metal **swing** & accessories. **£15. 01579 362085**

Mobility Walker Hardly used. Cost about £80 new from Argos. Will sell for **£40**
18 **Demijohns £1 each**
01579 362001

LINDAM **Soft Folding Bed Rail**, used once and in excellent condition. Colour Blue **£15**
GRACO **TRAVEL COT** in very good condition, Multi coloured base, (blue, red, yellow and green squares). **£10**
01579 382772

WANTED. Demountable **camp bed** in reasonable condition. **01579 362939**

Lec **Fridge.** Excellent working order. **£50**
Can deliver Pensilva area. **01579 363791**

Sony **Home Cinema System** CD/DVD/Tuner/Amplifier with 5 small wired speakers, sub-woofer and remote control. **£50.** **07841 717913.**

Wickes **Garden Shredder** **£10**
01579 363812

Four wheel disability walker with seat and brakes. **£35.**
Three wheel disability walker with bag and brakes. **£30.**
Pine four drawer bedroom unit. **£45.**
01579 362417

4ft 6ins x 6ft 3ins double metal **bed frame**, black and brass, no mattress. Extremely good condition. **£30** Buyer collects.
01579 383915

Dremel Moto Saw. As new condition **scroll saw/fret saw.** Ideal for hobbyists. Own, plastic carry case but is missing vacuum cleaner adapter & instruction booklet. Instructions available on line. **£40.**
01579 362207 (Pensilva)

Superdry clothing **2 windcheaters**, black with fleece lining. excellent condition **£20 each** ono **2 hoodies**, 1 purple, 1 navy, good condition **£15** each or ono
Black sherpa lined **windcheater**, excellent condition **£30** ono
All sizes XS & S
Jack Wills **wool sweater** size 8 and Johnnie B red Sherpa lined hoodie age 11-12 **£10** each ono
Photos can be emailed. **07724 111132**

Royal Sovereign **Strawberry Plants.** Potted £0.75 each. Bare rooted £0.60 each. **01579 320401**

Brand new, never worn, **motor bike helmet**, with visor and inside sun visor, red, grey & white. Size medium. Paid £90, will accept **£30** or nearest offer.
07980 284002

Berry's **sideboard**. Circa 1960s. 171cm high x 44.5cm deep x 78cm high. 2 cupboards with one reversible door. 4 drawers, one felt cutlery drawer. **£50 ono**. Unusual iridescent paper **side lamp**. Approx 31" high on small base. **£5**. **Buyer collects. 01579 345783.**

Very Comfortable 3 seater Dark Red **Leather Settee** in Good Condition. **£50** ono. (Buyer Collects)

Gas Cooker Electra Elec G56TCW White 3ft high x 2ft 1" deep x 1ft 7" wide, with top and bottom ovens in VGC. **£50** ono. Original **Belfast sink** 24"L x 18"W x 10" D. One slight chip. Ideal for garden use. **£35**. Child's Encore **Spanish Guitar**, Model Number ENC34. John Hornby Shewes & Co Ltd. With case in VGC. **£25**. No Offers. **01579 384658**

WELMAR Piano. Upright, 2 pedals, 52 keys, Length 55", height 41". Bought from and regularly tuned by Evan Hatch (Pianos) at Launceston. **£1300**. **01579 363010**

Automatic guitar tuner (quick tune) includes electronic pitchpipe.v.g.c as only used a few times/with box. **£5**. **Inflatable punch tower**, foot pump included, (160cm h). New still in box. **£5**. **Ladies motorbike jacket** Rayven, size 12, black/pink, as new. **£50**. **Men's black leather bike jacket**, 52L, & trousers, 40L, TARCA, vgc. **£50** the set. **Baby bouncer** for up to 6mths. East coast, light fawn/with white polka dots design material, vgc, **£10**. **07743 416676** (Minions area)

Reikie or Massage Table etc. Very good condition. (Fold away). **£35**. Pensilva area. **01579 363192**

Folding **3-wheel walker** with brakes and bag. Ideal mobility aid. Suitable indoor/outdoor. Hardly used. **£50. 01579 363081.**

Nest of 3 tables yew wood and glass top. Good condition **£45**. **3ft Mattress** in clean condition. Ex quality. **£50**. **3ft Divan** to match mattress. VGC. **£40**. **3ft Pine headboard** very attractive **£20**. **01579 343990** or **07553 928333**

Targus Notepac plus classic 16" **laptop case**. **Black £5**. **Leather black briefcase** 17½" x 12½" x 4". **£10 o.n.o.** Both in good condition. **01579 362846**

3 ft **Pine Bed** complete with fire-resistant mattress. Excellent condition. Hardly used. Buyer collects. **£30 ono**. **01579 362753**

Shires Show jacket. Black with purple Collar. Only been worn a couple of times. Ex. Con. **£25**. **01579 343992** or **07810 178802**

Homedics Back Massager. Full lumbar or Lower Lumbar only options. Plus variable intensity. Fits any armchair. Can be seen working. Only used twice. Great Xmas present. **£50 ono**. **07973 510693** St Ive.

WANTED to buy, a small piece of non-development, flat, accessible **land** within 5 miles of St Ive. Any type of land considered. **Tel 01579 - 384658.**

**PLEASE LET US KNOW
WHEN YOUR ITEM HAS
SOLD.**

What's on in St Ive Parish ?

WHAT'S ON	WHEN	CONTACT DETAILS
MILLENNIUM HOUSE		
Aikido	Thursday 7:00pm	
Antique & Collectors Fair	4th Sunday Monthly 10:00 - 4:00	
Badminton Club	Mon & Tues 7:30pm. Fr. 8.00pm	01579 363594 (Carol & Nigel)
Book Exchange	Daily	01579 363096
Breath of Air	Monday 12.30pm - 2.30pm	01579 345989 Pauline
Country Dancing	Alternate Thursdays 8.00 - 10.00pm	01579 382402 Ray Buckingham
Fitness Pilates	Monday 9:30 - 10:30am	07850 473428 (Dianne)
Ladies Netball	Friday 09:15 - 10:15am	07985 387472
Pensioners Lunches	Tuesday 12:00 - 2:00pm	01579 363096
Short Mat Bowls	Thursday 7:00pm	01579 208528
Village History Group	Last Monday Monthly 7:30pm	01579 208754 (Angus)
Wildlife Group	Quarterly	01579 362539 (Hilary)
Woman's Institute	2nd Wed Monthly 7:15pm	01579 363718 (Frances Tucker)
Yoga	Wednesday 7:00pm	01579 344464
Zumba Fitness Classes	Wednesday 7:00 - 8:00pm	01579 363096 (Millennium House)
PENSILVA VILLAGE HALL		
Brownies	Monday 4:00 - 6:00pm	01579 362239 Martha Oliver
Pensilva Wednesday Club	Wednesday 2:30pm	01579 363221 Mrs Jean Conner
Pensilva Snooker Club	Wed 7:00pm + Various times	01579 362091 Phillip Bond
Guides	Thursday 6:00 - 8:00pm	01579 363228 Caroline Hambly
MIMS	Friday 1.00 - 3.00pm	01579 343702 (Chris)
Rainbows	Friday 4:00 - 5:00pm	01579 362091 Lynne Bond
Rangers	For Info	01579 362982 Kirsty Oliver
PENSILVA PRE-SCHOOL		
Pensilva Pre-School	Monday-Fridays 9:00 - 3:15 (session times available)	07890 023924 Mrs Suzanne Kinsman (Manager)
Tiny Tots Toddler group	Friday 9:15 - 11:15am	07890 023924 Mrs Suzanne Kinsman (Manager)

ST IVE INSTITUTE

Gardening Club	1st Monday monthly 7:30pm	01579 382762
St Ive Snooker Club	Monday & Thursday 7:00pm	01579 382315 R Bunkum
Art & Craft Group	Tuesday 1:00 - 5:00pm	01579 362216 (Jackie)
Post Office	Wednesday 10:30 - 11:30	
Coffee Morning	Wednesday 10:30 - 12:00	
St. Ive Singing Group	Thursday 4.00 - 5:30pm	01579 382341 (Clare)

St Ive Institute available for hire. £3.50 per hour. This includes the use of the kitchen & electric (excluding wall heaters which operate on a £1 coin meter)

Contact Jill Ede 01579 384095

Hall meetings will now be held bi-monthly on the second Tuesday of the month

ST IVE & DISTRICT GARDENING ASSOCIATION

Meetings in St Ive Village Hall 1st Monday in the month at 7.30pm

Mon May 14 A visit to **N. Sillaton Farm**, N Pillaton, PL12 6PY.

Assemble in St Ive car park to leave at 7.10 pm

Sat May 26 **Plant Sale** in **St Ive Village Hall**. Doors open 1.30pm. Bring your spare seedlings and cuttings and find a new favourite.

Mon Jun 4 A visit to **Anvil Cottage**, South Hill, PL17 7LP

Assemble in St Ive car park to leave at 7.10pm

Visitors and new members are always welcome to join us.

ART AND CRAFT GROUP

We are a small friendly informal group who enjoy doing art and craft. If you paint or do any type of craftwork and would like to join us we'd love to welcome you.

There is no 'teaching' but help/advice is always forthcoming!

We meet at St. Ive Institute Hall from 1.00pm to 5.00pm Tuesday afternoons.

Only £3.00 for the afternoon plus 50p for tea/coffee and biccies.

If you are interested please give Jackie a call on **01579 362216**.

We look forward to meeting you.

Pensilva Post Office

Located through the Café on the 1st floor of Millennium House



Opening times:

Tuesday	-	9am to 1pm
Wednesday	-	9am to 12 noon
Friday	-	9am to 12 noon

THE MEL BAR ***MILLENNIUM HOUSE*** ***Licensed Free House***

GUEST ALES - LAGERS - CIDERS - WINES - SPIRITS

Opening Hours

Mon - Thu	-	5 pm to 11 pm
Fridays	-	3 pm to 11 pm
Saturday	-	12 noon to 11 pm
Sunday	-	12 noon to 11 pm

01579 363096

NEWS from ***the MEL***

- Bar refurbishment due to complete early May. Come and take a look!