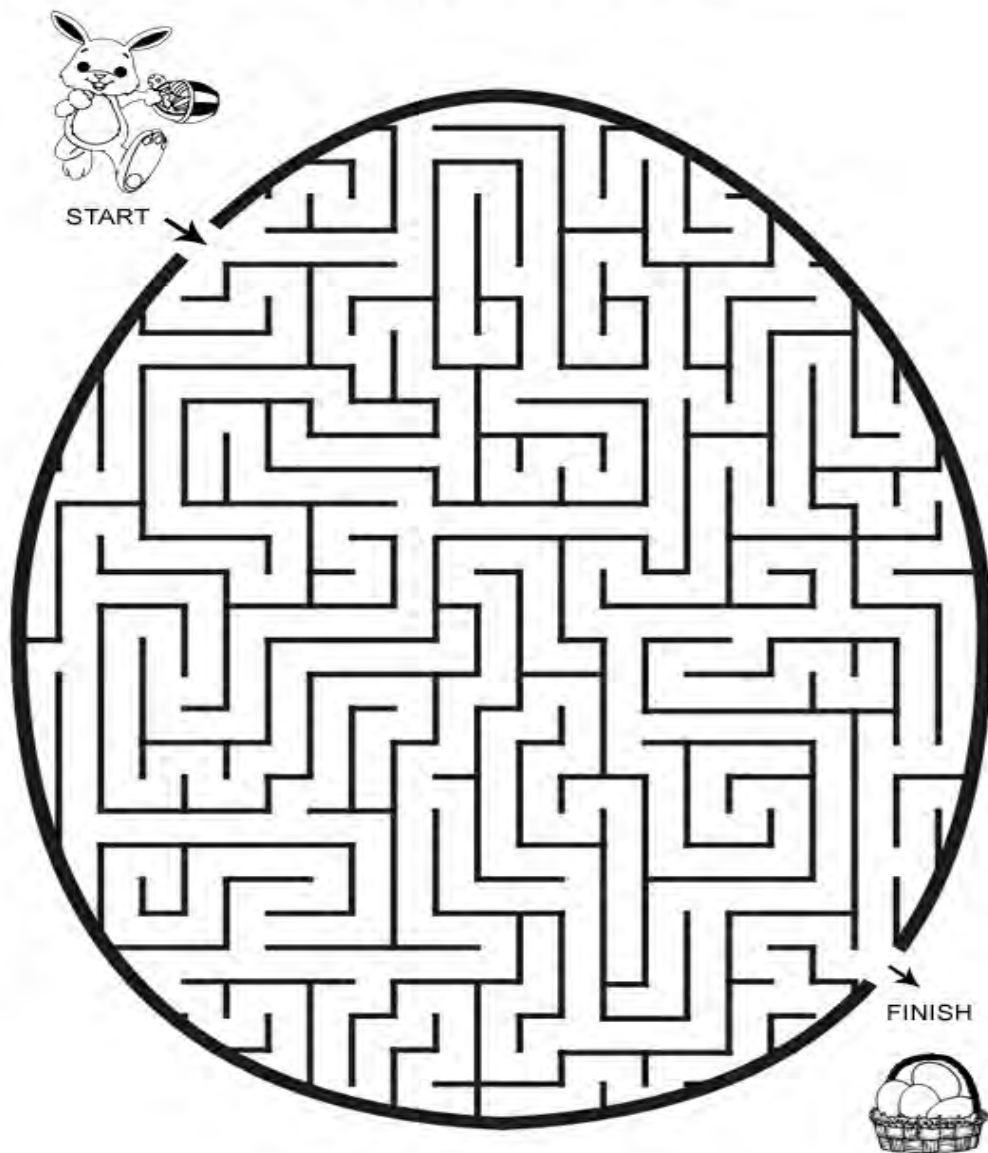


[illegible]

Help the Easter bunny find his way to his egg basket!



No photo's received this month so here's one for the kids

## Parish Councillors Telephone List

Stephanie McWilliam (Chairman)	01579 389386
Roger Bennison	01579 363967
Alan Neal	01579 362478
David Waddington	01579 362654
Harvey Frith	01579 363368
Don Bennett	01579 382762
Paddy Long	01579 364006
Peter Dipper	01579 362315
Pam Carter	01579 362640
Chris Higley	01579 362766

Angela Fisher (Parish Clerk)	01579 363096
Sarah Hylands - Thorpe (RFO / Manager MH)	01579 363096
Sara Rock (Finance Clerk)	01579 363096
John Turner (Cornwall Councillor)	01579 362122

## Date of Next Parish Council Meeting is

Monday 8th April 2013, 7.30pm Millennium House. Pensilva



Devon & Cornwall Police  
Building safer communities together

 **101**

Minicom 18001 101

**Police Community Officers can be contacted at anytime on  
01579 325454**

PC Garth Hatt

[garth.hatt@devonandcornwall.pnn.police.uk](mailto:garth.hatt@devonandcornwall.pnn.police.uk)

or PCSO Bob Anslow

[robert.anslow2@devonandcornwall.pnn.police.uk](mailto:robert.anslow2@devonandcornwall.pnn.police.uk)

or PCSO Becky Steed

[rebecca.steed@devonandcornwall.pnn.police.uk](mailto:rebecca.steed@devonandcornwall.pnn.police.uk)

### Disclaimer

St Ive Parish Council would like to point out that the articles appearing in this magazine do not necessarily reflect the views of the Parish Council.

Hello Everyone.

A short one again this month due to restriction of space. This is good for two reasons, I haven't got to think of too much to say and there is lots more information being submitted each month.

Great news from the Park Project this month (see page 24).

Worrying news from the Parish Council (page 8). It seem that central governments austerity measures have reached local level. I hope the problem can be resolved for the good of the community.

I wish the new owners of the Vic all the best and look forward to having a pint or 2 there in the future.

Please come and support the Charity Quiz on April 13th. Funds raised will be shared between All Being Well and the Chemotherapy Outreach Support Services. I understand that the pasties are very good and worth the entry fee alone.

*Nick Horler*  
*Editor*



**CHARITY  
QUIZ  
&  
PASTY SUPPER**



Millennium House  
Saturday 13th April  
7:30pm

*Raising funds for*

**Chemotherapy Outreach Support Services**  
*and*  
**All Being Well**

**£2.50 per person ( including a pasty )**

# Parish Council Contact Details

(Including Millennium House)

Millennium House, Century Square, Pensilva PL14 5NF

Parish Clerk and  
St Ive Parish Council  
01579 363096  
stiveparish@btconnect.com

Millennium House and reservations  
01579 363096  
millenniumhouse@btconnect.com

Millennium House Manager  
01579 329002  
millenniumhouseman-  
ager@btconnect.com

Parish Council and  
Millennium House accounts  
01579 329002  
millenniumhousead-  
min@btconnect.com

Parish Pump  
parishpump@btconnect.com  
Telephone enquiries to Parish  
Clerk above

Website:  
[www.cornwallvenue.com](http://www.cornwallvenue.com)

## Contact details for St Ive Parish Council

Anyone wishing to discuss matters of the Parish with the Council should first address their comments/enquiry to the Clerk (Angela Fisher), who will then present them to the Council. Angela can be contacted at 01579 363096, by post or [stiveparish@btconnect.com](mailto:stiveparish@btconnect.com)

For matters relating to Parish Council Accounts, please contact 01579 363096 or [millenniumhouseadmin@btconnect.com](mailto:millenniumhouseadmin@btconnect.com)

**2nd Monday monthly:** Parish Council Meeting, alternating between St Ive Village Hall and Millennium House (please refer to notice boards for the agenda showing start time and venue each month). Any changes to the regular dates (I.e. Bank Holidays etc.) will be publicised accordingly.

**4th Tuesday Monthly:** Parish Council Planning Committee Meeting, 7 pm at Millennium House Pensilva, followed by the Parish Council Finance & Administration Committee Meeting commencing at 7.30 in the same venue.

April 2013

This will be my final newsletter as such as the elections will shortly occur. After 10 years of public service I will miss it but will try to put some personal reflections together for May.

I suppose that the biggest decision made by the Council was the setting of the Budget for 2013/14. Following a long and at times heated debate a majority of members voted for a freeze on Council Tax for next year. Without making any political points I do have concerns about the consequences of this and the effect upon Adult Social Care and Childrens Services. I cannot comment further at this time in the run up to the election.

Cabinet voted in favour of developing a revised strategic partnership with BT to deliver support services in collaboration with the NHS. Some services currently delivered by Cornwall Council will be passed over to BT and NHS services such as Telecare and Telehealth will also form part of the contract. It is claimed that significant reductions in mortality rates, hospital admissions and A & E visits have been achieved through these services. Whilst more detailed results are needed what can be said is that Leeds City Council have achieved significant savings through these NHS services.

The results of the 2011 Census which is available online on the Cornwall Council website contain some statistics which may be of interest to some. It shows that 29,000 properties in Cornwall are not permanently lived in and that there has been an increase in single person households. Nothing startling there! What was interesting however was that fewer people were working from home and that more people were going to work in their cars. After the much vaunted 'home working' employers are realising that interaction is important and for employees there is a feeling of isolation and in some cases a lack of motivation.

I am still fighting to get some of the potholes in our roads repaired. Claims for damage to vehicles is rising significantly. There is now a form online if you have the misfortune to need to make use of it.

The Health Scrutiny Committee has been concerned with the issue of delayed discharges from hospital which is causing bed blocking and delays to elective surgery. It is a problem which affects us all but seems worse in the west of Cornwall.

Recommendations include closer working between all organisations to speed up the process of providing support to enable patients to return home with adequate safeguards.

Cllr. John Turner

## **St Ive Parish Council**

### **Meeting Held at St Ive Parish Hall on Monday 11th March**

All members of the council agreed with the Chairman who observed that the recent decoration of St Ive Village Hall was excellent and contributed to the “friendly” atmosphere of the building.

Councillor Don Bennet informed the council of the traffic problems at St Ive Cross. The lack of full visibility and less than adequate signs and road markings had resulted in several near misses, including one accident. After some discussion Cllr. Peter Dipper said he would contact the appropriate Cornwall Council Department and ask for a highway survey of the area and roads at the junction.

Cornwall councillor John Turner gave his monthly update on Cornwall Council business. He concentrated on the recent major decision made by the Council to freeze the budget for the next financial year. This will probably mean a reduction of 135 staff with the resulting decrease in services and service delivery. He commented that the suggested policy of outsourcing was not approved.

On behalf of the council, Chairman Stephanie McWilliam has sent a letter to Jenny Combes who has retired from her employment at Millennium House. The council collectively thanked her for her exemplary work record.

Before proceeding with a closed session to discuss financial matters for 2013/2014, the Chairman reminded all present of the Annual Parish Meeting which will be held on 20th May at 7pm. Venue to be published later.

Rod Pascoe

## **LISKEARD RELAY FOR LIFE 2013**

**Bank Holiday 25<sup>th</sup> / 26<sup>th</sup> May 2013**

**Relay For Life is a 24 hour team walk**

We are looking for team members – those who would like to walk , those who would like to help with promotion, those who have ideas for fundraising events, those who can bake cakes, those who can help run a stall, those who are happy to pack bags at the supermarket.....

**Everyone is Welcome**

to join us with however little or large the time they have to offer.

To find out more contact Alex Putna 07985387472

**Raising funds for Cancer Research**

**Pensilva Women's Institute's Horticultural Show**  
**Millennium House**  
**Saturday 14<sup>th</sup> September from 2.15 pm**

This enjoyable event is open for all to enter and is arranged by members of Pensilva Women's Institute. Schedules will be available later in the year to collect from Millennium House.

**Advance notice for creative items:**

**Handicrafts:**

A knitted or crocheted item  
An item of needlework  
A painting (any medium)  
Any other handicraft  
A toy – any medium  
An article made from recycled materials

**Children's Photography:**

**Junior Under 15**

A Beach Scene  
Flowers  
Own choice

**Photography: topics for adults this year are**

Bodmin Moor  
A Church  
A Tree  
Leaves and Water  
Own choice  
A digitally enhanced photograph –  
black and white or sepia

You can enter one photograph for each topic.

Prints may be colour or black and white, not larger than 7 ins x 5 ins (18 cms x 13 cms), to be mounted on white card.

**There is a desperate need for a Memory Cafe in Pensilva**

Is there anyone out there, or a small group of people, who would like to be part of a steering group to provide a Memory Cafe in the village? The Parochial Church Council of St John's Church is willing to offer the church as a venue, and to provide tea/coffee etc, but they do not have members able to offer their services on the steering group. Interest has already been expressed by several of our older residents (who at present have to travel to Liskeard or Launceston) for a Memory Cafe in Pensilva, and it may be that many others would like to take advantage of it if it were here. If you think you could help, please contact me on 362698 for more details. I do not believe it would be very onerous as there may be little need for fundraising as the venue and refreshments are being offered free. Users of the Cafe could be asked to make a small donation for any materials required for activities. Members of the group could visit other Memory Cafes to get ideas, and training is available.

Could I please appeal to you all out there to consider whether you could help by providing material such as word puzzles, photographs of Pensilva and the surrounding area, or anything else you think might stimulate people suffering memory loss, and coming to the church for an afternoon to help them with whatever you have got. It would mean so much, and especially to the carers, who can be free to chat among themselves for a while. I look forward to hearing from you.

Carolyn Cox, 362698.

## **Millennium House Business Reorganisation**

Millennium House is running at a loss. Fewer people are using it and those that do have less to spend due to rising bills of their own. However, all the bills for Millennium House are going up at the same rate. We have tried various ideas in an attempt to encourage more people to use this facility and our staff are working with us, coming up with ideas of their own. Our aim is to find a way to make Millennium House self-financing again but it is going to be difficult.

The Parish Council has agreed that urgent action is required to reduce costs and move Millennium House to a situation of financial balance within the next few months. A business reorganisation means looking at every aspect of the way this facility works and finding new ways of doing things. All staff have received a letter from the Parish Council explaining this and informal meetings have been held with staff to seek their views, ideas and suggestions. We are very grateful for their honesty and co-operation with this work.

The biggest cost in running MH is wages. Annual staff costs of over £100,000 and rising is unsustainable for a parish council. To expect local council tax payers to continue to finance this level of expenditure when there are so many other pressures on incomes is unreasonable. So it is in the area of staff costs that we must begin the task of addressing our problems. Comparisons with the way the Liskeard Public Hall and Callington Town Hall are operated and with the way St Ive and Pensilva Village Halls are run make it clear that there are some anomalies not entirely down to the size of MH.

We are also looking at opening hours, use of space, income potential, energy efficiency and the use of facilities by our community.

If you feel this Council is not representing your interests fairly and reasonably, you will have the chance to stand as a candidate in the elections for a new Council on May 2<sup>nd</sup> or to vote for different people. It is not an easy job but it does have its rewards. It is a long time since elections for Parish Councillors were held in Cornwall so we would ask you to use the democratic process this Spring.

If you would like to find out more, have any suggestions or to discuss this issue with a councillor, please contact the Parish Clerk, Angela Fisher, on 363096 to make an appointment.





**Pensilva Wildlife Group**

# **A G M**



Wed 17th April

7:00pm

Millennium House

Pensilva

If you would like more information or you're interested in joining this group, please come along.

***EVERYBODY WELCOME***

Events planned for this year include

Talk on Dormice by Jen Bousfield on Wednesday 12<sup>th</sup> June

20th June (walk on the moor above the village)

5th October (Walk around Siblyback and Golitha)

*More details nearer the time*

**Cornwall  
Blind  
Association**

**Improving the  
lives of visually  
impaired people**

## **Struggling with Sight Loss?**

Cornwall Blind Association offers emotional and practical help to people living with sight loss in Cornwall including:

**Low Vision:** Advice for low vision aids

**Access Technology:** Advice on products

**Benefits Advice:** Assistance to claim entitlements

**Equipment Demonstration:** Advice on gadgets

**Audio Books:** Information on books and equipment

**Talking Support:** Telephone befriending scheme

**Counselling:** For those affected by sight loss

**Transport:** Subsidised travel for some activities

**Social Clubs and Activities:** Links to clubs and activities across the county

**For more details**

**Telephone 01872 261110**

or visit [www.cornwallblind.org.uk](http://www.cornwallblind.org.uk)

Registered charity number 1108761

## Planning April 2013

### **Decision notices**

PA12/10652	Construction of white PVCu conservatory to side of property – Langstone, Lower Middle Hill, Pensilva, PL14 5QS – Mrs A Senatore	Approved
------------	---	----------

### **Applications Received – discussed at Planning Meetings**

PA13/00008	Two-storey extension to an existing dwelling Trevilder for an elderly dependant – Trevilder, Fore Street, Pensilva.	Mr Peter Easey
PA13/00739	Construction of a rear conservatory – 2 Trewoolsta Terrace, Pensilva PL14 5NN.	Mr and Mrs B Hocking
PA13/01025	Construction of side extensions and conservatory. Wilena, Lower Middle Hill Lane, Lower Middle Hill, Pensilva.	Mr David Diggins
PA12/08923	Erection of two poly-tunnels each measuring 20M X 7M for growing fresh herbs and chillies using hydroponics and aquaponics – Caradon Farm, Pensilva.	Mr John Batchelor
PA13/00398	Proposal to demolish small non-listed breeze block lean to within the curtilage of Grade II listed house in order to repair roof of listed building and prevent water ingress – Trebeigh Farm, Merrymeet, PL14 3LT	Mr Ian Gillbard
PA13/01198	Proposed 4kW ground mounted photovoltaic solar panels – Gate Farm, St Ive, Liskeard, PL14 3NB	Mr P Long

### **Planning Appeal**

PA11/07798	Construction of a new dwelling – Victoria Cottage, Slade Park Road, Pensilva, PL14 5NA	Mrs Vanessa Marshall
------------	--	----------------------

## **St. Ive Parish Council**

Millennium House, Century Square  
Princess Road, Pensilva,  
Liskeard, Cornwall, PL14 5NF.  
Tel : 01579 363096  
Fax : 01579 362102  
Email: [stiveparish@btconnect.com](mailto:stiveparish@btconnect.com)

### **ANNUAL PARISH MEETING**

The Annual Parish Meeting will be held  
at Millennium House, Pensilva  
on Monday 20<sup>th</sup> May at 7 pm.

This is your chance as a St Ive Parishioner to voice your opinions regarding the Parish. We will have a display of the proposed Traffic Management Plan for Pensilva – your input is essential.

### **Dog Fouling**

We are receiving increasing numbers of complaints from residents about dog fouling particularly in the following areas; Higher Road and Glen Park in Pensilva and the car park by the Recreation Ground at St Ive.

As a responsible dog owner the Parish Council would request that everyone pick up and bin.

The Parish Council do not have the funding or the powers to deal with this issue officially.

*Angela Fisher*

Clerk to St Ive Parish Council



### **Ruth's Coffee Morning**

Function Room      Millennium House  
Thursday morning 10:30am - 12:30pm



Come along for a chat with friends whilst enjoying a cup of tea or coffee with a cake for only £2.50

## **PENSILVA HISTORY GROUP**

The Group held their monthly meeting on Wednesday 27<sup>th</sup> February in Millenium House.

There were several items of 'Business' which were discussed. These included a progress report on the forthcoming grant of £250 from the Caradon Hill Area Heritage Project and a discussion on the Way Ahead and the Future of the Group and the other Heritage and History Groups in the area. This has been prompted by the Caradon Hill Area Heritage Project who have (happily ) advised us that they will continue to be funded by the Heritage Lottery until early 2014 but after that Lottery funding will cease and the local History Groups will have to be self sufficient with regard to funds .

After the 'Business' was dealt with, the Chairman showed the Group a framed certificate, two old photographs and several items of regalia that had been given to the Group. These were donated by a former Pensilva resident, Mr. Drew, and are part of his family's membership of the The Independent Order of Rechabites.

The Rechabites were a temperance friendly society founded in Salford on 25<sup>th</sup> August

1835. There name comes from a Biblical tribe who were commanded 'to drink no wine'. Membership flourished across the country and also in the USA and many towns and villages had their own branch of 'Tent' as it was called. One of the photographs shows a group of young members of 'The Rising Sun Tent - Pensilva'.

An article about the Rechabites and all the photographs and regalia received by the Group can be seen on our website in the 'People' section. See

[www.pensilvahistorygroup.org](http://www.pensilvahistorygroup.org)

The next meeting will be in Millenium House on Wednesday 24<sup>th</sup> APRIL at 7.30pm. Contact: Angus Holland at [Ansholland6@aol.com](mailto:Ansholland6@aol.com) or telephone 01579 208754

## **VALENTINES ROCK AND ROLL**

I would like to thank those people who helped me try to raise money for the school swimming pool. We were kindly given the Millennium Centre Hall free. The disc jockey, Wes & Amanda gave their time free. Julia and Belinda made delicious food and we were given lots of lovely raffle prizes.

It could have been a happy and lucrative evening for the school pool. Sadly nobody from the school bothered to come. Obviously they don't consider it particularly high on their agenda.!

Tessa

# Pensilva Primary School



First of all, a big thank you to Tessa who organised a Valentines Disco to raise money for our Swimming Pool Fund. Thanks to those who donated raffle prizes and to those who attended the event – your support is very much appreciated.

The children have achieved great things in Cross Country Running this year. Congratulations in particular to Isobel Thomas who came second in the Cornwall County Championships. This is a wonderful achievement and we're all very proud of Isobel and the whole team who have all done very well indeed.

We celebrated World Book Day on 7<sup>th</sup> March. The children – and staff! – dressed up as book characters and brought books into school. It was a lovely day which inspired the children in their reading and story writing.

The Pirates of St Piran joined us for a morning. The children in Reception and in Year Four/Five have been learning about pirates and had a great time!

We're busy planning a Science Day for later in March. This will be a whole day of science investigation where the children will work in groups on practical science activities.

As I write, we've just raised around £500 for Comic Relief (the final counting is underway!). It's fantastic to know that our school community thinks of others and makes an effort to raise money to help. Potentially, we've helped to save the lives of 100 children which is amazing and very humbling. Thank you to all those who supported our fundraising.

As always, we welcome anyone who would like to help – regularly or as a one-off. Thank you to those who already do give us their time and energy – it's very much appreciated.

Best wishes,  
Becky Crispin - Headteacher

### **Hear to Help – 1 Year on:**

Hello Everyone – I find it hard to believe that we have been running our hearing aid support drop-in service at Millennium

House for a whole year now, how the time has flown! I just wanted to take this opportunity to say thank you to all those who have come along and made use of our service and to remind those of you who haven't yet paid us a visit that we are still there.

The drop-in is on the 1<sup>st</sup> Wednesday of the month between 10.00 and 12.30pm and you can find us upstairs just by the gym. We can clean, re-tube and provide you with batteries, unfortunately we cannot repair or re-tune the hearing aid.

Nick and Liz are the regular volunteers who run the drop-in and they can also provide you with information and advice on getting the best out of your aids and other useful equipment. If you haven't got hearing aids but have concerns about your hearing drop-in for a chat and take away some free information.

Other local Drop In service :-

Liskeard. Oak Tree Surgery (2nd Thurs 2.00 – 4.30pm)

Launceston Medical Centre ( 2nd Friday 2.00 - 4.30pm )

Torpoint. Chatlink, Old School House ( 4th Thurs 10.00 12.00noon )

Callington Surgery, Tamar Valley Health Centre. 4th Fri 10.00 - 12.00noon )

Please tell your friend

If you want to know more about the service or maybe even fancy joining our friendly group of volunteers please feel free to contact me:

Karen Squire; Senior Community Support Officer

01752 228657; mobile – 07918 755809 (voice & text);

karen.squire@hearingloss.org.uk

## **THE MEL BAR**

**Come relax and wind down  
after work**

**At the Mel Bar, Millennium House**

**HAPPY HOUR**

**Opening time till 7pm**

**Weekdays**

**50p Off**

**all alcoholic drinks.**



## **My Parish Council Experience**

I joined the Parish Council in 2000 and have served in different capacities. Now that I am not standing in the next election I thought it timely to make a few observations.

Firstly, thanks are due to the many fellow councillors who served over that time. All have had the welfare of the Parish at heart and given up time and effort to make St Ive Parish a better place to live. Certainly not all have been united in how that should be achieved but whether I agree or disagree with their views, their approach has been based on what they see as good for the community.

Millennium House has – and must continue to – occupied councillors’ deliberations. MH is a blessing and a millstone! Being so large it costs a lot to run (utilities cost tens of thousands each year). This raises questions such as:-

Do we rent rooms commercially – and with it supply the staffing to do so?

Do we rent rooms to local organizations/clubs at “affordable” rates?

Should MH be financially self supporting or is it a Parish asset to be funded by the Parish (from the precept)?

Planning is one of the more controversial matters put before the Parish Council and one where the Parish has only an advisory role. This can be frustrating when the Parish Council is unanimous in, say, opposing an application only for approval to be granted by higher authority.

However, councillors continue to give their honest opinion and hope some heed is paid!

Most of the councillors will be offering themselves for re-election come May and would be delighted to welcome some new members. Any support you can give will be appreciated by parishioners.

Don Bennett

## **PARISH COUNCIL ELECTIONS**

Town and Parish elections are due to be held on 2nd May 2013. Nomination packs are available through the Parish Clerk at Millennium House.

The closing date for completed nominations is noon on 5th April 2013.

For more information please contact the Parish Office, Millennium House, Pensilva. 01579 363096.

### **Election Timetable**

Publication of Notice of Election

**Thurs 28th March 2013**

Close of Receipt of Nominations

**Noon Fri 5th April 2013**

Publish Statement of Persons Nominated

**Noon Tues 9th April 2013**

Last time for withdrawal of Candidature

**Noon Wed 10th April 2013**

Last day for new postal and postal proxy applications, amendments to or cancellation of existing postal or proxy vote applications. Last day to register as an elector for inclusion on polling day

**Wed 17th April 2013**

Last day for new proxy voting applications

**Wed 24th April 2013**



## PENSILVA VILLAGE HALL

Pensilva Village Hall collects paper for recycling newspapers, junk mail, catalogues and telephone directories.

These can be dropped off at the Village Hall.

Thank you to everyone who left paper in the last month but please note we can not recycle brown paper, brown envelopes or window envelopes unless the window has been torn out.



**Any one wishing to book the hall for Meetings, Birthday Parties or Fund Raisers please contact Peter or Jackie Browning on**

**01579 363212 or email [peter@pensilva.freeseve.co.uk](mailto:peter@pensilva.freeseve.co.uk)**

### Organisations that meet in Pensilva Village Hall

Meeting Times	Organisation	Contact Person	Telephone
Mondays 4:00 - 6:00	Brownies	Mrs Martha Oliver	01579 362239
Mondays 7:00 - 9:00	Rangers	Miss Kirsty Oliver	01579 362982
Tuesdays 7:30	Kick Boxing	Mr Steve Lilley	07773 863518
Alternative Wednesdays	Wednesday Club	Miss June Mills	01579 362407
Thursdays 9.15 - 11.15	Tiny Tots Baby & Toddler	Cathy	01579 363376
Thursdays 6.00 - 7.00 7.00 - 8.00	Beavers & Cubs	Mr Simon Thorpe	01579 363457
Fridays 4.00 - 5.00	Rainbows	Mrs Lynne Bond	01579 362091
Fridays 6.00 - 8.00	Guides	Mrs Jackie Browning	01579 363212
Wednesdays 7.00pm and Various Times	Snooker Club	Mr Philip Bond	01579 362091



# PENSILVA HEALTH CENTRE

## Patient Participation Group

### 'Carers Group'

If you are **BEREAVED** (it doesn't have to be recent) or are **CARING** for a sick relative or friend - come along and have a bit of 'ME TIME' and chat, share your experiences and relax with other people who may be in a similar situation - have a cup of tea or coffee and stay as long as you like.

The '**Carers Group**' meets on the **2nd Tuesday** of every month 1-3pm in the back room of the Health Centre -

(please use the side entrance (front door is locked at 1pm).

Everybody is welcome, though you **must** be a patient at Pensilva Health Centre to attend.

The group will be getting some independent speakers to come along to give advice and to answer questions on various subjects such as benefits, finance or planning for the future.

If you would like to attend,  
contact Jean or just turn up on the day.

No booking necessary.

If you know somebody that may benefit from attending -  
please pass this information on to them.

Jean Connor on 01 579 363 221 or mobile 07 899 694 670



**You can now donate  
locally in Pensilva.  
Every Thursday  
11.00am - 12.00noon  
St Johns Church**

**Dry or tinned food  
Only please**



## **Friends of Pensilva Health Centre**

The next meeting of the Friends of Pensilva Health Centre will be the Annual General Meeting. It will be held on **Tuesday May 21<sup>st</sup>** at 2.00 p.m. in Millennium House.

**All are welcome.**

---

## **HELP!**

The Friends of Pensilva Health Centre will have a vacancy for the voluntary role of Treasurer from May 2013.

The Friends exist to raise and manage funds for the Health Centre. The funds are used to purchase items of equipment that are of benefit to the patients but which are not routinely supplied to GP practices. Over the twenty plus years of our existence many items, from an ECG machine to portable 24 hour blood pressure monitors, have been funded meaning that often patients do not have to wait for a hospital appointment and then make the journey to either Liskeard or Plymouth, but can be treated at the Health Centre. The most recent purchase was a Dopplex machine, which cost over £3,000; it is in daily use detecting potentially life threatening vascular problems.

The role of Treasurer is not greatly time consuming. The Friends have three meetings a year and two fund raising events. In addition there are occasional donations from patients and patients' families and friends. The current Treasurer has offered to answer any questions that may arise from the handover.

If you feel that you would like to help us please contact the Chairman, Mrs Jean Connor on 01579 363221 for more information.

## **Pensilva Health Centre**

Continuing to provide high quality care for our patients.

**Surgery Opening Hours: Monday to Friday 8.30am - 6.00pm**

Appointments 01579 362760

Enquiries 01579 362249 [www.pensilvahealthcentre.co.uk](http://www.pensilvahealthcentre.co.uk)

## **DO YOU SUFFER WITH BREATHING PROBLEMS SUCH AS C.O.P.D.or ASTHMA**

Do you know someone who does?

If so, come along to our breathers group and join other people with similar difficulties for light exercise, a cuppa and a chat

**Pensilva Village Hall**  
**Every Monday 1pm - 3pm**  
**First trial session FREE**  
**Thereafter £3.00 per session**

# *ST JOHN'S CHURCH, PENSILVA*

## *Services for April 2013*

From 1<sup>st</sup> January Anglicans and Methodists will be sharing services at 11 am each Sunday, coffee served before service.

<b>Sunday 7<sup>th</sup></b>	9.30 am	Anglican Benefice Eucharist at St Cleer
	11.00 am	Methodist Service – Miss Shannon O’Connell
<b>Sunday 14<sup>th</sup></b>	11.00 am	Anglican-led Holy Communion
	5 .00pm	<b>Pizza and Praise</b> in Millennium House
<b>Sunday 21<sup>st</sup></b>	11.00 am	Lay-led <b>Family Café-Style Family Service</b>
<b>Sunday 28<sup>th</sup></b>	11.00am	Methodist-led Holy Communion Service with Rev Ruth Goodland

Pizza and Praise on Sunday 14<sup>th</sup> is an informal worship for busy families, with a bite to eat before we leave. All are welcome to join in.

Every Thursday at 10.30 am there is a short Holy Communion service. A coffee morning is held afterwards, open to all.

There will also be a Coffee Afternoon on Friday 5<sup>th</sup> April at 3 pm. Everyone welcome

The **Prayer Group** will meet on Friday 12<sup>th</sup> and Friday 26<sup>th</sup> April at 3.30 pm at 7 Lower Wesley Terrace. Please ring Rev Keith on 343240, or Rev Kevin on 363336, if you would like prayer for yourself or someone else.

The **Fellowship Group** will meet on Friday 5<sup>th</sup> and Friday 9<sup>th</sup> April at 7.30 pm in the church. Please do feel free to come along to this friendly group. Further info from Geoff or Carolyn on 362698.

### **CONCERT BY “LOST IN SONG” ON 20<sup>TH</sup> APRIL IS POSTPONED TO A LATER DATE**

For further details of the Services held in St John’s, if you know of any illness or need in the village, or if you would like your wedding or baptism in the church, please contact one of the church wardens:-

Geoff Cox – 362698    Maria Parker – 349894 Or    Frances Tucker - 363718

# **St Ive Methodist Church**

## ***Preachers for April 2013***

<b>Sunday 7th April</b>	11:00am	L.A
	6:00pm	Miss J. Mills
<b>Sunday 14th April</b>	11:00am	Rt Rev Prof Peter Stephens H.C
	5:00pm	Pizza & Praise Pensilva (No evening service at St Ive)
<b>Sunday 21st April</b>	11:00am	Mr B. Melling
	6:00pm	Rev Tom Osborne U.S
<b>Sunday 28th April</b>	11:00am	Mr K. Mutton
	6:00pm	Miss J. Mills

**Café Church**    Tuesday 9th April - 7:30pm.  
Speaker - Mrs Barbara Snowling

# St Ive Church

## Services at 11:15am Every Sunday

April 7th	Holy Communion Rev Margot Davies
April 14th	Family Service Small pets welcome
April 21st	Holy Communion Rev Margot Davies ( <i>Lunch to follow</i> )
April 28 <sup>th</sup>	Morning Worship

---

## Other April Events

Mon 1 <sup>st</sup>	Easter Monday Egg Hunt & Nature Trail with B.B.Q Starts 11am in Church Car Park
Fri 5th	Coffee, Lunch and Home Produce 10:30 -1pm <i>Home Made Cakes Etc, Fresh Vegetables, Pasties, Bric-a-Brac Pickles, Jams, and much more.</i>
Sat 6 <sup>th</sup>	Whist Drive in St Ive Village Hall 7:30pm
Tues 9 <sup>th</sup>	Cafe Church in St Ive Chapel 7:30pm
Sun 21 <sup>st</sup>	Lunch in Church only £6 all Welcome
Tues 23 <sup>rd</sup>	Cafe Church St Ive Church 7:30pm

Rev'd Margot Davies 01579 208698

Church Wardens

Kenneth Willcock 01579 362446      Brian Dwelly 01579 364010

## **Pensilva W.I March Meeting**

Frances Tucker our new President welcomed us all to the March meeting and introduced our speaker Mr Michael Prettyjohn, who spoke about life as a vet. It was an amusing and informative talk of his experiences over a long career. Having worked in Liverpool, Falmouth and Liskeard, he and his wife decided they would work in Swaziland, taking their 4 young children with them. It was a wonderful experience for all of them in spite of the primitive conditions. He said that the sheep at that time, had to be dipped every week in a mixture of arsenic to keep the pests and diseases at bay, and he was once asked to sew up a porcupine that had had an accident. Returning to this country he worked for the ministry for many years before his retirement. He was thanked by Ann Robinson.

Thanks was also given to Rosemary Farley for the invite to her new workshop, when we enjoyed a day making felt jewellery etc. and also for an excellent lunch of homemade soup and rolls, produced by her husband.

Hampton Court was the venue of our trip to see "Floramania", an exciting exhibition of floral displays and demonstrations depicting Henry VIII's crown. Set in the plush state rooms of the palace it showed off the beautiful displays to perfection.

A boat trip and visit to Windsor Castle completed the weekend.

£220.00 was made at the Marie Curie daffodil tea. Thanks to all for their support.

**Competition: Photograph of an Animal.** 1<sup>st</sup> Elsie Borsby. 2<sup>nd</sup> Verna Dawe.  
3<sup>rd</sup> Frances Tucker

**Flower of the Month:** 1<sup>st</sup> Gillian Pankurst. 2<sup>nd</sup> Jill Pascoe. 3<sup>rd</sup> Verna Dawe.

Frances presented birthday cards and plants to 9 members whose birthdays are this month.

Diary Dates: **Sat. 30<sup>th</sup> March.** Quilting. **Sat. 6<sup>th</sup> April.** Box Making with Audrey Fanning. **Fri. 12<sup>th</sup> April.** Spring Group Meeting. 7.30pm. Liskeard Church Hall.

**Wed. 24<sup>th</sup> April.** Photography Group. **Thurs 2<sup>nd</sup> May.** Lanhydrock "Bluebell Walk"  
**Sat 11<sup>th</sup> May.** Our 65<sup>th</sup> Birthday Dinner at Trelaske.

**Tues. 30<sup>th</sup> April.** Sew, Knit and Natter Millennium House. 2pm. Non W.I members are very welcome to join us on the last Tues. of every month.

Next Meeting: Wed, 10th April. Corinna Langford will speak about the St Pet- rocks Society for the homeless. Why not come along to a meeting as a visitor. We are a friendly group and you will be made very welcome.

Any enquiries please ring Frances 363718 or Jean 362531.



## **"Boiler Room Scams - what are they and how to avoid them"**

### **What is a Boiler Room?**

Boiler Rooms are businesses that use high-pressure sales techniques to sell "sure thing" investments with the promise of massive returns. In fact, what they're selling is worthless stock in often unquoted companies that are either overvalued, or that simply don't exist at all.

### **How they work**

Boiler Room operatives generally cold-call their targets, using phone numbers from publicly-available shareholder lists. Because it's against the law for brokers to cold-call in the UK, they tend to be based abroad (often Spain, Switzerland, or the US) where they are beyond the jurisdiction of the Financial Services Authority (FSA). They can approach anyone, anywhere.

### **Boiler Room techniques**

A Boiler Room can look and sound legitimate. They may mention companies you've heard of, give themselves a UK address or phone number, and possibly even have a professional-looking website. They are notoriously persistent, and can hound a victim for months in the hope of a sale, catching out even seasoned investors. According to the FSA, Boiler Room Scam victims lose on average £20,000. The bottom line is that if an opportunity sounds too good to be true, then it almost certainly is.

The advice is simple. If you think you're being targeted by a Boiler Room, the FSA's advice is not to worry about being polite - just hang up. You should then call the FSA contact centre on 0845 606 1234 with as much detail as you can remember. You'll find more information about Boiler Rooms on the FSA website [www.fsa.gov.uk](http://www.fsa.gov.uk). If you are receiving unwanted calls from companies, you can register with the Telephone Preference Service (TPS) to stop the contact being made. TPS can be contacted 0845 0700707 or visit their website at [www.tpsonline.org.uk](http://www.tpsonline.org.uk)

**PC 4386 Garth HATT**

**Neighbourhood Beat Manager for Liskeard Rural**

[garth.hatt@devonandcornwall.pnn.police.uk](mailto:garth.hatt@devonandcornwall.pnn.police.uk)

**Liskeard Neighbourhood Office - 01579 325454**

**Liskeard Police Station, Luxstowe, Liskeard PL14 3DX**

**Devon and Cornwall Police enquiries - 101**

# Monthly

1

# BINGO

21

Millennium House

**Tuesday 9th April**

Eyes Down 7:30pm

Over 18's only

**CASH PRIZES**

90

7

88

9

**Next Session**

**Tuesday 7th May**



# A Taste of Thailand

Saturday 27th April 4pm

At Millennium House, Pensilva



Tickets include a complimentary Isaan buffet  
A touch of northern Thai culture  
Isaan Dancing and Music

Tickets can be collected from pensilva Stores:  
£15 per adult, £4 per child under 12, under 2s Free

All Proceeds go towards PENSILVA PARK PROJECT



A very quick update this month as we have received some last minute news!

We have recently been successful in receiving up to £50000 funding from Viridor for our park project. This, along with the £30000 from SITA and all of our previous funding and fund-raising, means we now have enough money to progress with the park refurbishment!

This is an amazing achievement in such a short amount of time so I must say a few thank yous. Firstly to my extremely hardworking and dedicated committee. They have all given so much of their precious time around their busy lives and pulled together to make an enthusiastic and dynamic team! There are too many to mention here but I would like to especially say thank you to Vicki Payne and Keira Rendle for their help with endless form filling and attending funding meetings.

I would also like to say thank you to Ruth and co at Millennium House. We have used their venue on many occasions for meetings and fundraising events and continue to do so! How lucky we are to have this facility on our doorstep. Lastly for now, thanks to you the community for putting your hands in your pockets and giving money via our collection pots and at our fundraising events. I hope this community spirit continues.....

We look forward to hopefully seeing you at our Taste of Thailand event on Saturday 27<sup>th</sup> April. It will truly now be a celebration!!!

Clare Lambert, Chairperson. Treban, St Ive Road, Pensilva. PL145RB



# *All Being Well* - Monthly Newsletter

The AGM on March 5<sup>th</sup> was well attended and went off well. The meeting unanimously agreed the changes to our constitution which will now enable us to become a registered charity. Watch this space.

Six teams contested the quiz on March 2<sup>nd</sup>. The scores were very close all evening but eventually "In for a Laugh" emerged victorious on 72 points. Behind them it could not have been closer with "Three's a Crowd" on 70.5, "The Hopefulls" on 70, "The Quiet Ones" on 69.5 and "Us" on 69. The sixth team was "Haven't got a Clue" who did not live up to their name... most of the time J The next quiz is on April 13<sup>th</sup> – see separate notice.

Meanwhile in the gym itself, February was a rowing month. During the month nine people rowed the equivalent of crossing the channel, eight of those rowed the length of the River Camel and five of those rowed the length of the River Tamar, which is 98km (over 60 miles). A separate challenge was the three rivers race. This is an annual gig race starting in Sal-tash and our challenge was to row the 9280 metre distance as fast as possible on our indoor rowers. Fastest man was Graham Doney and fastest woman was Mel Weldon.

The March challenge is to "climb" the highest peaks on seven continents (including Antarctica) on the Cross-Trainers and Treadmills.

We are keen to extend the service we offer to people with special needs. Everybody can benefit from being a bit healthier but it's not always easy for people with special needs to find a place to exercise where they will be safe and where they will be welcome. That is why we are so fortunate to have All Being Well right on our doorstep. If you know of any individuals or groups who might benefit from the service we offer please let us know.

## **St. Ives Village Hall**

### **A.G.M**

Monday 15th April 7.30pm in the committee room at the hall.

All welcome.

Appalachian Dancing - we are in touch with a teacher who can give some lessons in this type of dancing, is there anybody out there interested, day and time subject to interest, if so please ring 01579 384095.

# Pensilva Post Office



Located through the Café on the 1<sup>st</sup> floor of Millennium House  
**the opening times are:**

**Tuesday - 9am to 1pm**  
**Wednesday - 9am to 12 noon**  
**Friday - 9am to 12 noon**

**Come and join us for fun and play at**

**Tiny Tots**  
**Baby and Toddler Group**



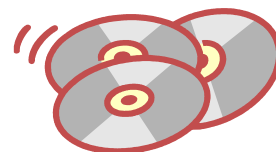
**Thursdays**  
**9.15am to 11.15am**  
**at Pensilva Village Hall**

**£1.50 per child**

Babies under 6 months and additional children 50p  
Includes snack, activity and hot drink for parent/carer

Contact Cathy for further details 01579 363376

**ANY UNWANTED DVD'S, CD'S  
AND GAMES**



**WE CAN TURN THEM INTO CASH  
FOR PENSILVA PRIMARY SCHOOL  
FUNDS**

**PLEASE GIVE ANY UNWANTED  
ITEMS INTO SCHOOL RECEPTION  
OR MILLENNIUM HOUSE RECEPTION**

**PLEASE CONTACT  
PENSILVA PRIMARY SCHOOL  
01579 362546  
FOR MORE INFORMATION**

## **St Ive Institute & Village Hall**

Every Wednesday  
10.30 am until 12 noon  
**Coffee Morning**

Every Wednesday  
10.30 am until 11.30 am  
**Travelling Post Office**

1st Monday at 7.30 pm  
**St Ive Gardening Club**

## **Pensilva Wednesday Club**

Meet in Pensilva Village Hall  
at 2.30 pm Alternate Wednesdays

**Wed 10th April**

Mrs Heather Mounts  
Sing & Monologues

**Wed 24th April**

**A G M**  
Vacancy for Treasurer  
( Urgent )

**ALL SENIOR CITIZENS  
WELCOME**

## **Supporting Guiding & Scouting Activities in Pensilva**

### **200 CLUB**

Draw Results for

**February 2013**

1st	No. 68	Mr M Smith
2nd	No. 126	Mrs V McCarthy
3rd	No. 34	Mr C Buck

**Thank You for your Support**

## **MOBILE LIBRARY**

The County Mobile Library visits  
Pensilva **every other**  
**TUESDAY** afternoon  
from 12th Feb 2013

3.50 - 4.05pm Victoria Inn

4.10 - 4.20pm Village Hall Car Park

4.25 - 4.45pm Glen Park





## Bus Timetables kindly supplied by a lady in Pensilva

CALLINGTON - BLUNTS - QUETHIOCK - MENHENIOT - LISKEARD - DOBWALLS - ST NEOT													283
Monday to Saturday except Bank Holidays From 2nd April 2012													
Service No	283	283	283	283	236	283	283	283	283	283	Service No		
Codes	Sch	SSV			NS						283	236	283
CALLINGTON New Rd	-	0755	-	-	-	1055	-	1255	-	-	Codes	NS	Sch
St Ive Cross	-	-	0900	-	-	-	-	-	-	-	St Neot Car Park	-	-
Blunts	-	-	0905	-	-	-	-	-	-	-	Trago Mills	-	-
Quethiock	-	-	0910	-	-	-	-	-	-	-	East Taphouse	-	-
St Ive Church End	Sal	0805	0915	-	-	1105	-	1305	-	-	Dobwalls Highwayman	-	-
Menheniot Bus Shelte	0815	0815	0925	-	-	1115	-	1315	-	1505	LISKEARD Station	0840	0925
Merrymeet Bus Stop	0822	0822	0932	-	-	1122	-	1322	-	1512	Manley Rd/Lanchard	0842	0927
Liskeard Hospital	0825	0825	0935	-	-	1125	-	1325	-	1515	LISKEARD Lloyds/TSB	0845	0930
Morrisons Plymouth Ro:	0828	0828	0938	-	-	1128	-	1328	-	1518	LISKEARD School	-	-
Briarwood/Lake Lane	-	0830	0940	-	-	1130	-	1330	-	1520	Briarwood/Lake Lane	0848	-
LISKEARD School	0832	-	-	-	-	-	-	-	-	-	Morrisons Plymouth Rd	0850	-
LISKEARD Post Office	0835	0835	0945	1040	1117	1135	1230	1335	1430	1525	Liskeard Hospital	0853	-
LISKEARD Station	0840	0840	-	1045	1122	-	1235	-	1435	-	Merrymeet Bus Stop	0856	-
Manley Rd/Lanchard	0842	0842	-	1047	1120	-	1237	-	1437	-	Menheniot Bus Shelter	-	-
Dobwalls Highwayman	-	-	0952	-	-	1142	-	1342	-	-	St Ive Church End	0859	-
East Taphouse	-	-	-	-	-	1145	-	1345	-	-	Quethiock	-	-
Trago Mills	-	-	-	-	-	1155	-	1355	-	-	Blunts	-	-
St Neot Car Park	-	-	1002	-	-	1203	-	1403	-	-	St Ive Cross	0900	-
											CALLINGTON New Rd	-	-
													1615

Codes **Sch** - Schooldays only    **SSV** - Saturdays & School Holidays only    **Sal** - to or from Saltash via Doddycross  
**NS** - Not Saturdays - Part of service 236 Liskeard - Launceston  
 This service is financially supported by Cornwall Council

LAUNCESTON - SOUTH PETHERWIN - RILLA MILL or NORTH HILL - UPTON CROSS - LISKEARD													236
Monday to Friday except Bank Holidays From 2nd April 2012													
Service No	236	236	236	236	236	236	236	236	236	Service No			
Code	TTh	MWF	TTh	MWF	TTh	MWF				236	236	236	236
LAUNCESTON Westgate St	0835	0835	1035	1035	1300	1300	1700	-	-	Code	TTh	MWF	CD
Launceston Tesco	-	-	-	-	1305	1305	1705	-	-	LISKEARD Station	0925	0925	1127
South Petherwin	0842	0842	1042	1042	1312	1312	1712	-	-	Manley Road/Lanchard Rd	0927	0927	-
CONGDONS SHOP	0848	0848	1048	1048	1318	1318	1718	-	-	Liskeard Post Office	-	-	-
Coads Green	0851	-	1051	-	-	1321	1721	-	-	LISKEARD Lloyds/TSB	0930	0930	1130
Bray Shop	-	-	-	-	-	R	-	-	-	Liskeard Hospital	-	-	1134
Linkinhorne	-	-	-	-	-	R	-	-	-	Pensilva Victoria	0944	0944	-
Rilla Mill	0858	-	1058	-	-	1333	1728	-	-	UPTON CROSS	0950	0950	1145
North Hill	-	0852	-	1052	1322	-	-	-	-	Darley Ford	0952	-	-
Trebartha	-	-	-	-	R	-	-	-	-	Bathpool	0957	-	-
Bathpool	-	-	-	-	R	-	-	-	-	Trebartha	1004	-	-
Darley Ford	-	0901	-	1101	1336	-	-	-	-	North Hill	1006	-	-
UPTON CROSS	0903	0903	1103	1103	1338	1338	1733	1735	-	Rilla Mill	-	0954	1149
Pensilva Victoria	-	-	-	-	1346	1346	-	-	-	Linkinhorne	-	1000	-
Liskeard Hospital	0913	0913	1113	1113	1358	1358	-	-	-	Bray Shop	-	1004	-
LISKEARD Post Office	0917	0917	1117	1117	1402	1402	-	1745	-	Coads Green	-	1007	1157
Manley Road/Lanchard Rd	-	-	1120	1120	-	-	-	-	-	CONGDONS SHOP	1010	1010	1200
LISKEARD Station	0920	0920	1122	1122	1405	1405	-	-	-	South Petherwin	1017	1017	1207
										Launceston Tesco	1025	1025	1215
										LAUNCESTON Westgate St	1030	1030	1220
													1500
													1500
													1802

Codes **TTh** - Tuesday & Thursday only    **MWF** - Monday, Wednesday & Friday only    **CV** - Saltash College Holidays only  
**CD** - Operates on Saltash College Days only departing from Liskeard outside the Post Office  
**DW** - Via Dobwalls, St Cleer & Pensilva  
 This service is financially supported by Cornwall Council



# **Callington - Pensilva - Liskeard** **Bus Timetable** **573**

The 574 service has been incorporated into the 573 service.

I have produced the section Callington to Liskeard.

The full timetable can be downloaded at :-

[www.westerngreyhound.com/route\\_pdf/573.pdf](http://www.westerngreyhound.com/route_pdf/573.pdf)

## **Monday to Saturday buses**

	573	573	573	573	573	573	573	573	573		573	573	573	573	574			
	SSH	SD	SSH	SD	SSH	SD	SSH	SD	SSH	SD		SSH	SD	SSH	SD			
<b>Callington New Road</b>	<b>0630</b>	<b>0630</b>	<b>0730</b>	<b>0830</b>	<b>0930</b>	<b>0940</b>	<b>1034</b>	<b>1130</b>			<b>30</b>			<b>1530c</b>	<b>1630</b>	<b>1730</b>	<b>1830</b>	<b>1930</b>
Callington Liskeard Road Bowling Club	0631	0631	0731	0831	0931	0941	1035	1131			31			1531	1631	1731	1831	1931
Callington Liskeard Road Werrington Drive	0632	0632	0732	0832	0932	0942	1036	1132			32			1532	1632	1732	1832	1932
St Ive opp Keason Cottages	0638	0638	0738	0838	0938	0948	1040	1138			38			1538	1638	1738	1838	1938
St Ive Old Post Office	0639	0639	0739	0839	0939	0949	1042	1139			39			1539	1639	1739	1839	1939
St Ive opp Butchers Arms	0640	0640	0740	0840	0940	0950	1044	1140			40			1540	1640	1740	1840	1940
Pensilva Industrial Estate	0644	0644	0744	0844	0944	0954	1048	1144			44			1544	1644	1744	1844	—
<b>Pensilva Victoria Inn</b>	<b>0645</b>	<b>0645</b>	<b>0745</b>	<b>0845</b>	<b>0945</b>	<b>0955</b>	<b>1049</b>	<b>1145</b>			<b>45</b>			<b>1545</b>	<b>1645</b>	<b>1745</b>	<b>1845</b>	<b>—</b>
Pensilva opp Belmont Park	0646	0646	0746	0846	0946	0956	1050	1146			46			1546	1646	1746	1846	—
opp Crows Nest Inn	0650	0650	0750	0850	0950	1000	1054	1150			50			1550	1650	1750	1850	—
Darite Phone Box	0652	0652	0752	0852	0952	1005	1056	1152			52			1552	1652	1752	1852	—
Higher Tremarcombe Shelter	0654	0654	0754	0854	0954	1004	1058	1154			54			1554	1654	1754	1854	—
opp Commonmoor Turn	0655	0655	0755	0855	0955	1005	1059	1155			55			1555	1655	1755	1855	—
<b>St Cleer Church</b>	<b>0659</b>	<b>0659</b>	<b>0759</b>	<b>0859</b>	<b>0959</b>	<b>1009</b>	<b>1103</b>	<b>1159</b>			<b>59</b>			<b>1559</b>	<b>1659</b>	<b>1759</b>	<b>1859</b>	<b>—</b>
St Cleer opp Primary School	0700	0700	0800	0900	1000	1010	1104	1200			00			1600	1700	1800	1900	—
Tremarcombe Bottom of Well Lane	0701	0701	0801	0901	1001	1011	1105	1201			01			1601	1701	1801	1901	—
Tremar Phone Box	0702	0702	0802	0902	1002	1012	1106	1202			02			1602	1702	1802	1902	—
Lower Tremar Bottom of Tremar Lane	0703	0703	0803	0903	1003	1013	1107	1203			03			1603	1703	1803	1903	—
Merrymeet Shelter	—	—	—	—	—	—	—	—			—			—	—	—	—	1953
Liskeard opp Culverwood Road	0705	0705	0805	0905	1005	1015	1110	1205			05			1605	1705	1805	1905	—
Liskeard Moorland View	0706	0706	0806	0906	1006	1016	1111	1206			06			1606	1706	1806	1906	—
Liskeard Callington Road Filling Station	0707	0707	0807	0907	1007	1017	1112	1207			07			1607	1707	1807	1907	—
Liskeard Hospital	0709	0709	0809	0909	1009	1019	1113	1209			09			1609	1709	1809	1909	1957
Liskeard Greenbank Road opp Fire Stn	—	—	—	—	—	—	—	—			—			—	—	—	—	2000
Liskeard Charter Way opp Peppers Park	0710	0710	0810	0910	1010	1020	1114	1210			10			1610	1710	1810	1910	—
Liskeard opp Morrisons	0712	0712	0812	0912	1012	1022	1116	1212			12			1612	1712	1812	1912	—
Liskeard Plymouth Road Fairlight	0713	0713	0813	0913	1013	1023	1117	1213			13			1613	1713	1813	1913	—
<b>Liskeard Parade Post Office arr</b>	<b>0718</b>	<b>0718</b>	<b>0818</b>	<b>0918</b>	<b>1018</b>	<b>1028</b>	<b>1122</b>	<b>1218</b>			<b>18</b>			<b>1618</b>	<b>1718</b>	<b>1818</b>	<b>1918</b>	<b>2001</b>

<b>Liskeard Parade opp Post Office dep</b>	<b>0654</b>	<b>0738</b>	<b>0838</b>	<b>0856</b>	<b>0941</b>	<b>1038</b>	<b>1138</b>					<b>38</b>				<b>1638</b>	<b>1738</b>	<b>1838</b>	
Liskeard Plymouth Road opp Fairlight	—	0741	0841	—	0944	1041	1141					41				1641	1741	1841	
Liskeard Morrisons	—	0742	0842	—	0945	1042	1142					42				1642	1742	1842	
Liskeard Charter Way Peppers Park	—	0743	0843	—	0946	1043	1143					43				1643	1743	1843	
Liskeard Greenbank Road Fire Station	0655	—	—	0857	—	—	—					—				—	—	—	
Liskeard Hospital	0658	0744	0844	—	0947	1044	1144					44				1644	1744	1844	
Liskeard Callington Road opp Filling Stn	—	0746	0846	—	0948	1045	1145					45				1645	1745	1845	
Liskeard opp Moorland View	—	0747	0847	0858	0949	1046	1146					46				1646	1746	1846	
Liskeard Culverwood Road	—	0748	0848	0859	0950	1047	1147					47				1647	1747	1847	
Merrymeet opp Shelter	0702	—	—	—	—	—	—					—				—	—	—	
Lower Tremar Bottom of Tremar Lane	—	0752	0852	0903	0955	1052	1152					52				1652	1752	1852	
Tremar opp Phone Box	—	0753	0853	0904	0956	1053	1153					53				1653	1753	1853	
Tremarcombe Bottom of Well Lane	—	0754	0854	0905	0957	1054	1154					54				1654	1754	1854	
St Cleer Primary School	—	0755	0855	0906	0958	1055	1155					55				1655	1755	1855	
<b>St Cleer opp Church</b>	<b>—</b>	<b>0756</b>	<b>0856</b>	<b>0907</b>	<b>0959</b>	<b>1056</b>	<b>1156</b>					<b>56</b>				<b>1656</b>	<b>1756</b>	<b>1856</b>	
Commonmoor Turn	—	0758	0858	0909	1001	1058	1158					58				1658	1758	1858	
Higher Tremarcombe opp Shelter	—	0759	0859	0910	1002	1059	1159					59				1659	1759	1859	
Darite opp Phone Box	—	0800	0900	0911	1003	1100	1200					00				1700	1800	1900	
Crows Nest Inn	—	0802	0902	0913	1005	1102	1202					02				1702	1802	1902	
Pensilva Belmont Park	—	0808	0908	0919	1011	1108	1208					08				1708	1808	1908	
<b>Pensilva Victoria Inn</b>	<b>—</b>	<b>0809</b>	<b>0909</b>	<b>0920</b>	<b>1012</b>	<b>1109</b>	<b>1209</b>					<b>09</b>				<b>1709</b>	<b>1809</b>	<b>1909</b>	
Pensilva Industrial Estate	—	0810	0910	0921	1013	1110	1210					10				1710	1810	1910	
St Ive Butchers Arms	0714	0814	0914	0925	1017	1114	1214					14				1714	1814	1914	
St Ive opp Old Post Office	0715	0815	0915	0926	1018	1115	1215					15				1715	1815	1915	
St Ive Keason Cottages	0716	0816	0916	0927	1019	1116	1216					16				1716	1816	1916	
Callington Saltash Road opp Car Park	0722	0822	0922	0933	1025	1122	1222					22				1722	1822	1922	
<b>Callington New Road</b>	<b>0724</b>	<b>0824c</b>	<b>0924</b>	<b>0935</b>	<b>1027</b>	<b>1124</b>	<b>1224</b>					<b>24</b>				<b>1724</b>	<b>1824</b>	<b>1924</b>	



# An Evening with Johnny Cowling

In aid of



## The Cornish Ivy, Liskeard

Friday 17th May 2013 at 7.30pm

Disco & Bar until late

Ticket only event  
£12.50 including Pasty Supper

Tickets are limited so please book early  
Contact Pat on 01579 362959

### 36th Annual St Ive Show Saturday 7th September 2013 St Ive Village Hall

Entries open to all

Schedules will be available May onwards from

Doreen: 383054 Veronica: 382762 Sally: 383933

**Advance notice for Photography, Art and Crafts**

#### **Photography:**

1. A view from Caradon Hill
2. Mining Heritage
3. Any moor animals
4. Moorland flora
5. A place of peace
6. Own chouce (colour or black and white)

#### **Art:**

1. Pencil, charcoal or ink drawing
2. Oil/ acrylic painting or pastels
3. Watercolour painting

#### **Crafts:**

1. A fabric picture ( up to 24" by 24")
2. A handmade greetings card
3. An item made from wool
4. Tapestry or cross-stitch
5. A gift for a friend, any medium
6. An item of home-made jewellery
7. A knitted hat
8. Patchwork or quilting
9. Any embroidered article
10. A gift for a baby
11. A toy animal, any medium

**Junior section:** a photograph you have taken yourself, any subject.



**SPRING IS IN THE VEG BOX** yesterday, one of our lucky box scheme customers had our first picking of fresh, young chard and last week everybody got some gorgeous spring greens. This marks the start of our very early crops and is an exciting time for us here. Soon we will be gently cropping our first salad leaves and beetroot and carrots are starting to bulk up. In fact they will need thinning soon: I so hate that part of the growing cycle: it feels like plant murder, but we haven't quite got the hang of the instruction *sow thinly* yet.

We had 2 new veg box customers (many thanks) last month, both of whom said they'd been thinking about it for a while. If that applies to you too, then pick up the phone or e-mail, to get your share of the limited spring bounty and be first in line for when our main crops are ready. 01579 363684 or [thegrowingproject@orangehome.co.uk](mailto:thegrowingproject@orangehome.co.uk)

**OTHER WORK THIS MONTH** includes digging up and replanting the outdoor strawberries, thinning lettuce plants, sowing brassicas under cover, planting out chard seedlings and preparing trenches for early potatoes. Our next big job is to fence off the growing area from my garden, so that it can be a dog-free space. We may regret that if it then becomes a rabbit playground, but we need to try, since the dogs raid our peas, beans, potatoes and tomatoes if they can.

**RHUBARB FARM** the Board of Directors is heading to Nottinghamshire soon for a study visit a community garden similar to ours, which is further along the road to expansion. They now have 10 acres under cultivation and are slowly developing their community business, which now employs a number of staff and has a great range of volunteers.

**LAND SEARCH** like Rhubarb Farm, we want to expand and so we are looking for 5 -10 acres of good growing land near the village, or on a bus route, for sale or to rent on a long lease. We need somewhere fairly level, south-facing, with easy road access, water, power and preferably an outbuilding or three. If you know of anywhere that may be right for us, do let us know, we'd love to hear from you.

**The Growing Project CIC is a Community Interest Company** producing organic fruit and vegetables and developing training for local people. We are a group of people who have opened the growing space at Kenwyn to the community and welcome volunteers for all sorts of jobs every Weds from 11.30 till 2.30 .

Ruth Wilson 01579 363684/ 07853 244934  
[www.thegrowingproject.org.uk](http://www.thegrowingproject.org.uk)

Kenwyn, Higher Rd, Pensilva PL14 5NH Tel: 01579 363684

[thegrowingproject@orangehome.co.uk](mailto:thegrowingproject@orangehome.co.uk)

Community Interest Company Reg No. 7677387



# NICK THE HANDYMAN

**20 YEARS EXPERIENCE**  
**FREE ESTIMATES - NO JOB TOO SMALL**  
**DEPENDABLE & RELIABLE SERVICE**

**A QUALITY JOB EVERY TIME**

**01579 384770 / 07715 606252**

**PROPERTY MAINTENANCE - GARDENING**  
**PAINTING & DECORATING - CARPENTRY**  
**REMOVALS - RESTORATION - REPAIRS**

## *Crafts @ Gorfenna*

Beginners, Improvers and more  
Advanced Crafters Welcome

### **MAY 2013 COURSES AND WORKSHOPS**

Rag Rugging Needle Felting Jewellery

Jewellery Water-colour Pencil Painting

Knitting Teddy/Polar Bear Workshop

Quilting Wedding Flower Arranging

All courses include materials, lunch  
and parking



All enquiries please call:

Lesley Redfern-Phillips or Rosemary  
Farley

01579 384810 or 07833 513347

Email [craftsgorfenna@gmail.com](mailto:craftsgorfenna@gmail.com)

Gorfenna

St. Ive

Nr Liskeard

PL14 3LX



# Pensilva Cars

**Unit 6  
Ten Acres Ind. Est.  
Pensilva, Liskeard  
PL14 5RE**



**01579 363516    07880 577038**

- Servicing from £60
- Repair
- Diagnostics using the Latest Up to Date Equipment
- Free Courtesy Car
- Car & Van Sales
- M.O.T's Class 4 from £39
- Member of Good Garage Scheme
- Member of Retail Motor Industry

**We can Service & Repair your car to  
Manufacturer Specification, which  
Will Keep your Dealer Warranty  
Without Main Dealer Expense.**

# TREVALLICK'S



## FARM SHOP

### Tea & Room

## Summer hours

8 till 8 seven days a week

**Tel:**

**01579 364061**

We are situated in Pensilva  
PL14 5PJ near Liskeard,  
on the B3254

## NEW LUNCH MENU

### in the Tea Room

- Homemade Cakes
- Cornish Tea
- Pasties



### IN THE FARM SHOP

- Fresh local fruit / veg
- Meat and dairy produce
- Local crafts and gifts

### Winter Fuels

- Kindling wood
- Seasoned logs
- Coal

**Home Delivery  
Available!**



**NEW fun pig feeder for the kids!**

Check out [www.facebook.com/trevallicks](http://www.facebook.com/trevallicks)

## Cornish Cycle Hire

**NOW available to hire at Sibleyback Lake  
see website for more details.**



Check out [www.cornishcyclehire.co.uk](http://www.cornishcyclehire.co.uk) or pop into Trevallick's Farm Shop  
& Tea Room for more information on our suggested route and for hire rates.



Mark Fitch  
**CHIMNEY SWEEP**

- Brush & Vac
- No Mess
- Professional Affordable Service
- Discount on Multiple Chimneys

Covering all S.E. Cornwall



**Tel: 01579 343899**  
**Mobile: 077734 62643**



HIGHLY REGARDED LOCAL BUILDER  
COMPETITIVELY PRICED  
COVERING THE SOUTH WEST

Contact Dom on

**07968 599 675**

**01579 362 945**

[info@mccarthypropertymaintenace.co.uk](mailto:info@mccarthypropertymaintenace.co.uk)

[www.mccarthypropertymaintenance.co.uk](http://www.mccarthypropertymaintenance.co.uk)

**FIONA'S  
MOBILE  
HAIR DRESSING**

Local, friendly,  
Professional

Call Fiona on  
**07837472924**

Or

**01579 362897**

**20% off first appointment**

**Tree Surgeon**

**All types of Tree Surgery  
Work Undertaken**

**Competitive Rates**

**Free Quotation**

**07919 100058**

**01579 363373**

**[harvey008@hotmail.com](mailto:harvey008@hotmail.com)**

# Pensilva Stores



**Shop Local For All**

**Your Local Need**

- ◆ Fantastic Special Offers every month!!! (See store leaflets)
- ◆ Come and Check out our great deals on Wines and much much more!!!
- ◆ Free Weekly Delivery to Pensioners in the village (over £10 Spend)

New in Store - Local Meat from Local Butcher,      Fresh Home made Bakery

Local Hand made butter and Clotted Cream, Yum ! !

***This is one village shop you don't want to lose !***

Higher Road, Pensilva, Liskeard, Cornwall PL14 5NQ Tel: 01579 362547

# MENDOLOGY

## Garage Door Specialist

- ☐ Repairs
- ☐ Servicing
- ☐ Installations

Out of hours service  
call Dave anytime 07974 442645

**MENDOLOGY** COMMERCIAL DOORS LTD

[www.mendologydoors.co.uk](http://www.mendologydoors.co.uk)

# 01579 363760

# **The Natural** **TILE & STONE COMPANY**

**10% Discount To Pump Readers**

- *Exclusive Italian Ceramics , Glass & Porcelain*
- *Specialists in Mosaics, Natural Stone & Slate*
- *Over 30 years of expertise in Tile & Bathroom Design*

## **NEW TILE & BATHROOM SHOWROOM IN PENSILVA**

CONSERVATORIES ♦ SHOWERS ♦ BATHROOMS ♦ KITCHENS ♦ PATIOS ♦ GARAGE AREAS  
PORCHES & HALLWAYS ♦ LOUNGE & DINING AREAS ♦ SWIMMING POOLS ♦ CHANGING ROOMS

**FREE  
WET ROOM  
DESIGN SERVICE**  
**CALL 01579 362264**

**WAREHOUSE  
CLEARANCE  
SALE  
NOW ON**

**Unit 24 Pensilva Industrial Estate**  
**[www.naturaltileandstone.com](http://www.naturaltileandstone.com)**



# wheal tor

eat drink sleep

## SUNDAY LUNCH.

come and join us in our new conservatory  
with cosy log burner and the most amazing  
view .....1 course £7.95 .2 courses £9.95

Easter Sunday 31st March

special lunch menu ... easter egg hunt for children with prizes ....

*please book to guarantee your table.....*

*Spring Special for April*

*juicy steak and chips and a glass of wine for  
two ...only £20 .....*

01579 363401

Wheal tor is situated at the top of Pensilva, on the left hand side as you drive  
towards Upton Cross from Liskeard.

Open every day from 12 pm except Mondays . Delicious food served all day



*Get a Fit and  
Fabulous New  
You for 2013*

**ZUMBA!**

**Wednesdays**

Millennium

House

**7.30-8.30pm**

**£5 per Class**

**£2 off with this Ad**



## **Personal Carer**

Experienced Mature  
Carer

Available for all personal care  
needs

Personal Care, Domestic,  
Shopping Trips

Tel 01579 363373

Mobile 07799422253

Email: harvey008@hotmail.com



01579 345764

[www.thecatcabin.co.uk](http://www.thecatcabin.co.uk)

## *MONSIEUR DECORATEUR*

### **General Property Maintenance**

Internal & Exterior Painting

Woodwork

Roof Repairs

Glazing, Tiling etc.

Power Washing Exterior Walls, Patios etc.

References Available

No Job Too Small

Call Tim 07762 477542

## J. H. Simmons

Painting & Decorating



Interior  
&  
Exterior



**No Job Too Small**

References Available

For more information  
Please call John  
01579 362688

7 East Park, Pensilva



## FERN LODGE

Boarding Kennels & Cattery

- Fully insured and licensed
- Individual care and attention
- All diets cared for
- Early morning walks, late evening Strolls & plenty of playtime
- Quiet rural setting
- Dog Training
- Knowledgeable & friendly staff
- Collection & delivery service.



Come and visit our on site pet shop  
Vast variety of Dog and Cat food  
Top names all at competitive prices.  
FREE delivery service inside the parish!

Tel: 01579 363030  
Golberdon Road, Pensilva

# Calming Hands

The Holistic Therapy Room

-Swedish body massage-Aromatherapy-Reflexology-  
-Hopi Ear Candles-  
-Indian Head Massage-  
All at affordable prices!

**MILLIE PARROTT**

*Therapist*

Tel: 07787 400702  
Email: [enquiries@calming-hands.co.uk](mailto:enquiries@calming-hands.co.uk)  
Measham, Rilla Mill  
PL17 7PQ  
[www.calming-hands.co.uk](http://www.calming-hands.co.uk)







## **T J WEBB PLANTHIRE AND LANDSCAPE**

Driveways, Patios, Buildings, Decorating and Gardens all  
jobs considered

Pictures and References available on request

Local and reliable with 40 years of experience

**FREE QUOTES AVAILABLE WITH NO PRESSURE**

CALL Trevor on; 01579 363087 or 07548738051

**10% OFF WITH THIS AD.**



### **GRAHAM CHINN** Heating & Plumbing



**BOILER - Service - Repair - Central Heating Installations**

**Plumbing - Leaks - Repairs - Hot Water Cylinders**

**Energy Efficient Boiler Replacements**

**AGA / Rayburn - Service - Sales**

**GAS - LPG - OIL**



Member

**Tel: 01579 371230 Mob: 07967 704 211**



S.E. Cornwall W.Devon & Plymouth  
[sales@thecookerstore.com](mailto:sales@thecookerstore.com)





# KEITH RICHARDS

## Motor Body Repair Specialists

A family run business with fully equipped & maintained workshops & a focus on  
Customer Care

- ♦ Motor Body Repair Specialist
- ♦ Mechanical Repairs
- ♦ Servicing to All Makes & Models
- ♦ Computer 4 Wheel Alignment
- ♦ 24 Hour Recovery Service
- ♦ Renovations & Re-sprays
- ♦ Member of RMI (Retail Motor Industry Federation)
- ♦ Latest Diagnostics (including specialists for VW, Audi, Seat,  
Skoda & Vauxhall)

With over 30 years' experience we aim to provide you with:- Value for Money -  
Friendly Service - Professional Approach - Expert Advice that you Can Trust  
(Visit our website for more details)

Pensilva Industrial Estate, St Ive Road, Pensilva, Liskeard, Cornwall PL14 5RE

Tel: 01579 362593

Email: [keith@keithrichardsmotorbody.co.uk](mailto:keith@keithrichardsmotorbody.co.uk)

Fax: 01579 363194

Website: [www.keithrichardsmotorbody.co.uk](http://www.keithrichardsmotorbody.co.uk)

## ***DOG GROOMING***

**40 YEARS EXPERIENCE**



**SMALL and MEDIUM Dogs  
Groomed to Your Request**

**LISKEARD AREA  
Inquiries Welcome**

**Call Patricia: 07517 658862**

## **EcoCleaners for a safe and healthy environment at home**



eco-friendly  
cleaning  
agency  
offering regular  
domestic  
service:

weekly,  
2-weekly  
or 4-weekly

**01503-241166**

**www.ecocleaners.co.uk  
mail.ecocleaners@gmail.com**

## **Penharget Farm B&B**



**Pensilva**

**Quality 4\* en-suite  
Accommodation**

**For more information call  
Julie**

**01579 362221**



**www.penharget-farm-cornwall.co.uk**

## ***Bruce Jack Upholsterer of Fine Furniture Traditional & Modern***



For all aspects of  
Upholstery and Loose  
Covers, including  
fabric sales, contact  
Bruce on;

**01822 834433**

or visit our website at  
[www.bruce-jack.co.uk](http://www.bruce-jack.co.uk)





# GROUP TRAVEL

*Dunmere Road Garage, Dunmere Road, Bodmin, Cornwall, PL31 2QN*

## 2013 COACH EXCURSIONS

5 <sup>th</sup> APRIL	WOOKEY HOLE
5 <sup>th</sup> MAY	BADMINTON HORSE TRIALS CROSS COUNTRY DAY
11 <sup>th</sup> MAY	MALVERN SPRING SHOW
31 <sup>st</sup> MAY	LONGLEAT
28 <sup>TH</sup> JUNE	RIVER DART CRUISE, DARTMOUTH, STEAM TRAIN TO PAIGNTON
11 <sup>TH</sup> JULY	RIVER FAL CRUISE FALMOUTH, & HEARTLANDS
25 <sup>TH</sup> JULY	GREENWAYS, RIVERCRUISE AND DARTMOUTH
3 <sup>RD</sup> AUGUST	NEWTON ABBOT RACES
4 <sup>TH</sup> AUGUST	GATECOMBE OPEN/INTERMEDIATE BRITISH FESTIVAL OF THE HORSE

**FOR BOOKINGS & ENQUIRIES**

**PLEASE CONTACT 01208 77989**

More details on [www.grouptravelcoachhire.com](http://www.grouptravelcoachhire.com)

# K P S

KEASON PLANT SERVICES

**Moordown Works, St Ive**

**Mini Digger &  
Dumper Hire**

**01579 383933**

**NICOLA GREENE**

BSc (hons) Podiatry MChs

HPC Registered Chiropodist/Podiatrist

**Home Visit Practice treating all  
your foot care needs:**

- Nail Cutting
- Corns and Calluses
- Thickened Nails
- Dry Cracked Skin
- Verrucae
- Foot Pain
- Diabetic Foot Assessments
- Wound Care

**T: 01579 590027**

**T: 01752 291565**

**M: 07786164205**

**E: [nicki\\_greene@yahoo.com](mailto:nicki_greene@yahoo.com)**

**GrassHopper  
Garden & Maintenance  
Services**

A quality service offering all aspects of  
garden work and general maintenance

Grass Cutting – Strimming – Hedges

Garden Clearance and Tidying

Patio & Path Cleaning

General Garden Care

General Household Maintenance

Interior & Exterior Painting

Guttering

Window Cleaning

General Help

All Work Considered

Fully Insured

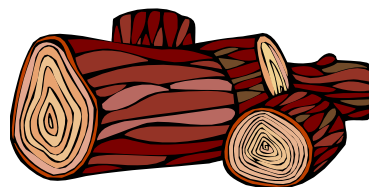
Honest & Trustworthy

**Call Steve**

**07817427997**

**01579 344006**

**SEASONED LOGS**



**MIXED LOAD  
or  
HARDWOOD**

Tel Jonathan

Mobile 07966 070725

or

01579 363157

Also tree/hedge work  
undertaken

**J.J.CHILD**

**PLUMBING AND HEATING ENGINEER**

**OIL AND GAS APPLIANCE**

**SERVICE , REPAIR AND BREAKDOWNS**

**LANDLORD'S CERTIFICATES**

**OVER 25 YEARS EXPERIENCE**

**CALL JOHN ON 01579 362336**

**MOBILE 07837921086**



**502322**



# CARADON HILL AREA HERITAGE PROJECT

## **Bo Foaks Memorial Walk:**

Leave & return to Stuart House, Liskeard,  
Saturday 6th April, 10am – 1pm (approx)

A three mile stroll taking in some of the beautiful footpaths & lanes  
that radiate out from Liskeard.

Stout boots & waterproofs are a must as are all dogs to be on  
leads, some steep descents & inclines, could be muddy!  
Everyone Welcome!

## **Be Moor Aware:**

Crosslink Centre, Upton Cross, Saturday 20th April,  
9:30am - 4:30pm – booking essential

We are running a FREE day school where those who walk on the  
moor can gain a bit of knowledge about basic navigation skills,  
survival techniques, what to do in an emergency etc. Advice will  
also be given also regarding the legal requirements of organisers  
of visits, events etc. and who to approach when thinking about  
organising a visit or holding an event on Bodmin Moor.

Not suitable for under 16's.

## **Make a Willow Wigwam Plant Support:**

Parish Hall, Upton Cross, Saturday 11th May, 9:30am - 4:30pm  
-booking essential. FREE day school for those who work, volunteer  
or live in the Project area, not suitable for under 16's.

## **Date for your Diary – CHAHP Invasive Plant Day:**

Tuesday 14th May

Please contact Iain Rowe on [irowe1@cornwall.gov.uk](mailto:irowe1@cornwall.gov.uk) or call  
01579 341171 to book or for more details,

[www.caradonhill.org.uk](http://www.caradonhill.org.uk)



**LOTTERY FUNDED**



Department  
for Environment  
Food & Rural Affairs

This project is supported by the Rural Development  
Programme for England, for which Defra is the  
Managing Authority, part financed by the European  
Agricultural Fund for Rural Development:  
Europe investing in rural areas



**CORNWALL  
COUNCIL**

**&  
Local  
Partner  
Funded**



**Need Somewhere to Stay?  
Between Homes ?  
Are Family/Friends Visiting ?**



**ST. IVE**

Long Term Stays  
Short Breaks  
Open all Year

**Call Jackie on 01579 362216**



**Computer Tamer**  
Home help  
for all your Computing  
needs.

Down to earth, jargon-free tuition, advice,  
repairs, troubleshooting & installation.  
Puzzled by email setup, anti virus, back-  
ing up photos or any other aspect of using  
your machine?

Need that computer set up or repaired?

Need a website designed or updated?

For all this and more call Tony for a free  
chat about your needs.

Then I can visit you at your home.

No call out fee if a local visit, just a rea-  
sonable hourly rate.

Talk to you soon. Gift vouchers available

**01579 320547**

**t.bedden@btinternet.com**

**Wm. Newham & Sons**

Est. 1835

**Proprietor Robbie Savill**

**CHIMNEY SWEEPS**

**CHIMNEYS SWEEP  
& LINED  
STOVES INSTALLED  
& REPAIRED**

**01579 347 777**

**07794 751281**

*Also Available for Weddings*







Avalennek, Caradon Town,  
Upton Cross, Liskeard  
Cornwall PL14 5AR  
Telephone 01579 363598  
Mobile 01901 538132  
[chrisrounsevell@tiscali.co.uk](mailto:chrisrounsevell@tiscali.co.uk)

## HOG ROAST EQUIPMENT HIRE AND MEAT SUPPLY

Hog Roasts For Those Special Occasions  
Self Catering or Hassle Free Service  
Everything done to your special requirements

**CHRIS ROUNSEVELL**  
TRADITIONAL BUTCHER

**D. Hall**

## Painter & Decorator

Interior & Exterior Painting  
Kitchens & Bathrooms  
Wall & Floor Tiling  
Covering all General  
Household Maintenance

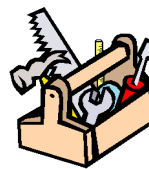


**Derek Hall**

Mobile: 07974 066 292  
Tel: 01579 362 783

**KEEP IT TIDY**

General Property Maintenance  
including Decorating, plus  
Electrical



**HONEST PRICE**  
for **QUALITY** work.

**No Job Too Small**

**Kit Rickard**

18 Higher Glen Park  
Pensilva

**Phone:** 01579 363378

**Mobile:** 07855 699071

**Email:** [KITKeepItTidy@hotmail.com](mailto:KITKeepItTidy@hotmail.com)

# B & P Electrics

Local, Experienced and Reliable

All Types of Electrical Work Covered

- Domestic
- Commercial
- PAT Testing
- Landlord Certification
- Free Estimates
- 24 Hour Call Out

Contact :- 07772571932 Or :- 07738867557

Landline :- 01579 321617

## WHY VISIT CALLINGTON

**Friendly staff who want to help  
Choice of independent specialist shops**

**Cheap car parking**

**First hour repayable with purchase at Co-Op**

- \* ELECTRICAL GOODS \* CYCLES \* GIFTS \* CARDS \*
- \* CORNISH PASTIES \* RESIDENTIAL ART COURSES \*
- \* FINE DINING RESTAURANT \* NEWSAGENTS \*
- \* ANTIQUES & CURIOS \* PET SHOP \* HARDWARE \*
- \* BRIDAL WEAR \* OPTICIANS \* BABY & TODDLER CLOTHES \*
- \* CARPET SHOP \* ACCOUNTANTS \* SOLICITORS \*



**There Is So Much More - Visit To See For Yourself**

**CALLINGTON TRADERS ASSOCIATION**

**SHOP LOCAL AND KEEP CALM**



## Martin Hoare – Local, Reliable, Competitive



WHEEL DIGGER FOR HIRE  
ALSO AVAILABLE 'BREAKER'  
AND NEW CONCRETE  
'CRUSHER BUCKET'

ALL AT COMPETITIVE RATES

GROUND WORKS  
DRAINAGE  
NEW DRIVEWAYS  
SEPTIC TANKS &  
'SOAK AWAYS' INSTALLED



LASER LEVEL FOR HIRE  
QUOTES AVAILABLE



Phone 01579 363517

or

Mob 07863 291213



## Steve West Aerial Services



(Ex Miners Home Appliances)

Installations / Repairs to  
TV Aerials, Satellite Dishes  
and Radio

Customised to your requirements

Repairs to TVs, Recorders,  
Hi Fi etc, starting at £55

TV mounting on walls  
Help setting up systems  
and demonstrating.

Phone 01726 822865

Mobile 07941 606 183

e-mail [steve-west@talktalk.net](mailto:steve-west@talktalk.net)

## CORNWALL PET SERVICES

**HOME BOARDING FOR DOGS  
DOG WALKING  
HOME VISITS**

Situation: Between Liskeard and Callington

- Home Boarding for Dogs – safe home environment, off-road walking
- House calls to suit your family pets
- Dog walking
- Fully insured
- Police Checked

**Chris Day**

**Birchill**

**Quethiock**

**Liskeard Cornwall**

**PL14 3SQ**

**Tel 01579 340438**

Email – [cornwallpetservices@gmail.com](mailto:cornwallpetservices@gmail.com)

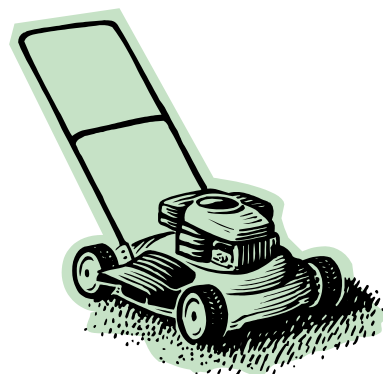
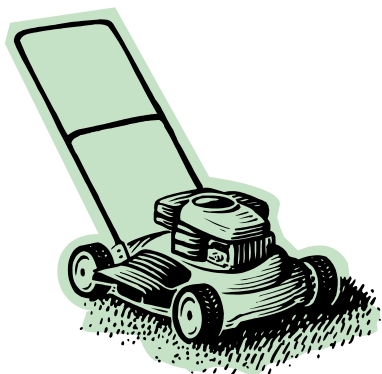
[www.cornwallpetservices.wix.com](http://www.cornwallpetservices.wix.com)

# DAVID HEWETT GARDEN SERVICES

**LAWN MOWING / GRASS CUTTING  
STRIMMING**

**HEDGE CUTTING**

**CLEARING etc/etc**



**FREE QUOTES**

**Tel. 01579 363796**



**All  
About  
Dogs**

**GROOMING SERVICES**

*Advanced City & Guilds Qualified*

*Award Winning Groomer*

*9 Years Experience*

*All Breeds, Sizes & Ages welcome*

*One on One Treatment for Your Dog*

*Call Becky on 07855 420448*

*[www.allaboutdogsgroomingservices.co.uk](http://www.allaboutdogsgroomingservices.co.uk)*

*Unit 26, Holman Road.  
Liskeard Business Park*

**Save Costly Energy!**



**Windows &  
Conservatories Ltd**

**'A' Rated WINDOWS & DOORS  
at BEST PRICES EVER!**



Professionally fitted and finished by us with a  
10 year ins. guarantee.

FENSA  
REGISTERED

In all colours

**NEW**

**FACTORY SHOP  
SUPPLY ONLY**

For all your windows, doors, conservatories,  
fascia, trims, guttering and sealants

**7-10 DAY TURN AROUND ON WINDOWS,  
DOORS and CONSERVATORIES**

**TEL: 01579 343425**

**FAX: 01579 344500**

WEBSITE: [www.solartecwindows.co.uk](http://www.solartecwindows.co.uk)

EMAIL: [sales@solartecwindows.co.uk](mailto:sales@solartecwindows.co.uk)

**KEEPING JOBS IN CORNWALL**



# **BURGER QUEEN**

**SNACK VAN / TAKEAWAY**

**SITUATED @ THE VICTORIA INN, PENSILVA**

**“USING LOCAL BURGERS  
SUPPLIED BY CHRIS ROUNSEVELL”**

**FULL MENU & PRICE LIST AVAILABLE ON  
THE “BURGER QUEEN” FACEBOOK PAGE**

## **OPENING TIMES**

**MONDAY**

**6pm - 9pm**

**WEDNESDAY**

**6pm - 9pm**

**NOW OPEN FRIDAY LUNCHTIMES 12pm - 2pm**

**FRIDAY**

**6pm - 11pm**

**SATURDAY**

**6pm - 11pm**



# **ST IVE AND DISTRICT GARDENING ASSOCIATION**

## **PROGRAMME 2013 - 2014**

Meetings are held in St Ive Village Hall at 7.30pm.

Visitors and new members are always welcome to join us.

- Tuesday 9<sup>th</sup> April**     A visit to Porthpean House Gardens, St Austell.  
(note day)             *Assemble in St Ive car park to leave at 6.30pm*
- Tuesday 7<sup>th</sup> May**     A visit to Kernock Park Plants, Pillaton. Refreshments and sales available.  
(note day)             *Assemble in St Ive car park to leave at 6.10 pm*
- Saturday 1<sup>st</sup> June**     **Plant Sale** held in St Ive Village Hall.                             Doors open at 1.30pm.  
Hope to see you there to bring and buy and enjoy a cuppa and a chat.
- Monday 3<sup>rd</sup> June**     A visit to Gwen's garden at Quethiock House.  
                                 *Assemble in St Ive car park to leave at 7.15pm*
- Monday 1<sup>st</sup> July**     A visit to Cutlinwith, Tideford.  
                                 *Assemble in St Ive car park to leave at 7.10 pm.*
- Monday 5<sup>th</sup> August**   A visit to Brigitte and Jack's garden at Trembraze Farm, Tregay Lane, Liskeard followed by a Summer Social Supper ---- bring a plate of food / bottle  
                                 *Assemble in St Ive car park to leave at 6.40pm*
- Monday 2<sup>nd</sup> September**   Butterflies and wildlife gardening in SE Cornwall, Patrick Saunders.
- Saturday 7<sup>th</sup> September**   **St Ive Village Show.**                             Doors open at 2.30pm.  
Do enter the gardening classes and come to see the exhibits.
- Monday 7<sup>th</sup> October**     Slugs, Aphids and Vine Weevil, Tim Ellis.
- Monday 4<sup>th</sup> November**   Gardening under cover, Alistair Rivers.
- Monday 2<sup>nd</sup> December**   A birdwatcher's year in Cornwall, Gary Lewis.
- Saturday 4<sup>th</sup> January 2014** **Association Annual Lunch**, details to be confirmed.
- Monday 3<sup>rd</sup> February**     Matt Bown will talk about his time with Radio Cornwall.
- Monday 3<sup>rd</sup> March**        **7.00pm ANNUAL GENERAL MEETING**  
7.30pm A talk by James Treseder from Wallcottage Nursery.

# **Bargain Corner** **Free Ads up to** **£50**

You may place an ad for sale up to **£50** Free of Charge. There is a £5 charge for items **over £50**.  
Please contact the Parish office on  
01579 363096 or  
email [parishpump@btconnect.com](mailto:parishpump@btconnect.com).  
Please let us know when your item has sold.

**Single Bed** - Myers single bed base (no mattress included) with two storage drawers and stylish grey metal and glass headboard. **£25.**

**Dressing Table/Chest of Drawers** set - Mahogany colour dressing table (Width 144cm, Depth 47cm, Height 72cm) with stool and three way mirror + separate three drawer chest( W 83cm, D 50cm, H 72cm). **£40**

**Corner TV Stand** - Matt black finish with glass door and one shelf. On castors. (W 70cm, D 45cm, H 45cm). **£10**

**TEL: 01579 364088**

**Singer Sewing Machine** No. 15K88 Form K4380. Has been converted to electric.

**£50.00**

**Kenwood Chef Food Mixer**

**£25.00**

**Vax Vacuum Cleaner.** Combined with vaxing (Wash cleaning) carpets

**£30.00**

**01579 362454**

## **MOTORCYCLE JACKET & TROUSERS**

quality German make, cordura with armour and thermal lining, detachable liners, hardly used, **£50.**

**01579 362216**

**Electric Convector Heater** fully working 6 heat settings & fan assisted optional **£20.00**

**Ark II by Flaming Youth LP.** Phil Collins former band. Collectors item **£45.00**

**Fish Tank** - Small, complete with oxygenator, gravel, plastic plant, goldfish book & fish food.

**£20.00**

**Computer Table** Solid Pine on casters. Keyboard pull-out shelf. Good condition **£30.00**

**Genesis "Archive"** 2 x 4 cd box sets. 1 - P. Gabriel era. 2 - P. Collins era Mint condition

**£30.00**

**Genesis bootleg cassettes**, a case full. Many concerts **£50.00 to collector**

**Quality garden furniture.** Circular fold away table dark stained wood, lattice effect with 4 matching fold away chairs. ( Argos price £100 ) **£45.00**

**Good quality mop.** Twist & squeeze handle to squeeze out mop.

Good condition

**£10.00**

**Moulinex multi purpose food processor mixer.** Good condition, hardly used but jug missing

**£35.00**

**01579 346775**



# Bargain Corner

## Free Ads up to £50

### ELECTRIC.... GRASS CUTTING MACHINE

QUALCAST CONCORDE CYLINDER  
32

1ft cut ...£12 Excellent condition  
Surplus to requirements  
St Ive area. 01579 384092

Mens **Black patent dancing shoes** size  
10 little used. Good condition **£15 ono.**

01579 342820 or 07980427225.

2 x **Bodyboards** – one girls and one  
boys **£3.00** each

**V-Tech my first laptop** – one orange  
and one pink **£5.00** each

Large '**Mr Potatohead**' 3 potatoes and  
several outfits **£5.00**

01579 383933

Tefal Blendforce **glass blender** unused  
**£25.00**

01579 364005

Hi sleeper **metal frame bed** with  
shelves, desk and chair good condition  
also with the single mattress **£50.00**

**Adidas football boots**, F10 junior size 5  
1/2 purple and green hardly worn **£20.00**

Fender squier **electro-acoustic guitar**,  
good condition complete with new string  
and a very nice sound **£50.00**

Encore **juniors guitar** with case **£20.00**

**07980156802      01579 342868**

**Graco booster seat** for child,  
3 – 10 years old (15-36kg)  
Very good condition. **£10.00**  
**01579 362303.**

Black **Playstation 2** (slim) and controller  
Good condition,  
All power cables included  
**£15**

01579 383134

**Electric fire**, coal effect/, brass front/wood  
mantle surround **£40.**

Winnie the pooh **highchair**/converts to  
table&chair/wood frame/upholstered **£25**

BABYLISS shiatsu **bath spa** (new -  
boxed) **£20**

**NO7 facial spa** centre( new-boxed) **£20**

HOMEDICS full body **massage mat**  
(boxed) was £50--accept **£25**

Kids snakes and ladders **playmat**  
**£5.00** new (still sealed)

Kids pink hopscotch **playmat**,  
**£5.00** new(.still sealed)

**ROCKET DOG** flipflops/black wedge/red  
bead detail (new still in box) was £40-  
accept **£20**

**Calligraphy set** and beginners book  
**£10.00**, new(in box)

**Me to You Bears**; 1 is medium size with  
blue coat, glitter around collar, ideal for  
xmas, **£15.00** 1 is small size holding a  
reindeer, ideal for xmas, **£10.00 or**  
**both for £20.00.**

**Giorgio** beverly hills 2011, collectors  
bear in protection box, **£10.00.**

01579362146

or

07743416676

# Bargain Corner

## Free Ads up to £50

Pets at Home Value **Wire Dog Crate**  
(Small 77cm x 49cm x 53cm). Used  
once. Two available **£30.00 each**.

Black Faux **Leather Tub Chair and Foot  
Rest**. Good as new. **£50.00**

Custom made 'L' shaped desk. Very  
strong. Approximately 7ft x 5ft. **£50.00**

Leather **swivel office chair**.  
Good condition. **£40.00**

**01579 363774**

**Wanted, used Railway Sleepers/  
Telegraph Poles** for garden.

**For Sale, New Laminated work surface**  
1600x600 speckled effect **£20.00**  
**07976 570914,**

Motorola **Baby Alarm**  
Brand New  
**£25.00**  
**01579 362619**

### For Sale:

**Sawing Horse**, as new strong treated  
timber six legged folding sawing horse,  
ideal for sawing all types of firewood on.  
**£22.50**

15 **Golf Clubs**, 6 Golf Balls, 2 all weather  
gloves and carrying bag **£35.00. ono**  
Approximate 30 gallon tough **Blue Nylon  
Barrel** with air tight fastening top and  
heavy duty rubber lid. **£20.00**

2 boxes of 1.4, mainly yellow, cartridges  
in 27 calibre strips for Trifix BT160,  
BT400 and BT 60m nail guns and 3  
boxes of Profix **Cartridge Tool Nails**.  
**£25.00.**

32,½" long x 21" deep x 1½" thick **Blue  
Slate Fire Place Hearth Stone** **£50.00**  
Hitachi 8" 240 v **disc cutter** in good  
working order. **£35.00 .**

Collectors Item, **Salter** 9" dia Brass  
Faced made in England, **hanging scales**  
to weight up to 200 lb. **£25.00**

### Wanted

Large sized **walling or hedging stone**  
even if recovered from old building walls  
or other structures. I have several one  
side meters of Cornish hedge which I  
would like to conserve.

Sensibly Priced **Creosote** from 5 litres to  
a 100 litres

**Tel 01579 - 384658**

Now that Sky TV has been installed in The Mel bar you can follow all your  
favourite football teams whilst enjoying a drink with mates



**Live Football at The Mel**

See poster in the bar for matches being played in April



# **Deadline for the Parish Pump is STRICTLY**

**15th** of every month

Contact Parish Office on 01579 363096

E-mail [parishpump@btconnect.com](mailto:parishpump@btconnect.com) and use "Parish Pump"  
In the subject heading.

All ads must be in font size 16 or larger to ensure it is readable as it is reduced from A4 size to the size of the current publication.

Ads to be sent as word or Publisher doc (text ads), Pub, Tiff or Jpeg (picture ads). Please contact the Parish Office for Ad Placement Specifications.

**Advertising Prices (from December 2012) including VAT at 20%**

<b>Add Size</b>	<b>Per Month</b>	<b>Annually</b>	<b>Savings</b>
¼ Page	£ 7.50	£ 81.00	£ 9.00
½ Page	£15.00	£162.00	£18.00
Full Page	£25.00	£270.00	£30.00

The 10% discount for 12 months advertisement paid in advance is subject to the ad remaining unchanged for the fixed period.

**2ND SAT MONTHLY**  
**9.30 - 12.30**

## **PENSILVA FARMERS MARKET** **Millennium House**

### **FRESH LOCAL PRODUCE**

- Meat
- Bakery
- Vegetables

### **CRAFTS**

- Quilts
- Cushions
- Embroidery
- Greeting Cards



**Next Market Sat 13th April**

What's on in St Ive Parish ?		
WHAT'S ON	WHEN	CONTACT DETAILS
<b>MILLENNIUM HOUSE</b>		
Aikido	Thursday 7:00pm	
Antique & Collectors Fair	4th Sunday Monthly 10:00 - 4:00	
Badminton Club	Mon & Tues 7:30pm. Fr. 8.00pm	01579 320741 (Phil)
Book Exchange	Daily	01579 363096
Country Dancing	Alternate Thursdays 8.00 - 10.00pm	01579 382402 Ray Buckingham
Farmers Market	2nd Sat Monthly 9:30 - 12:30	01579 363096
Fitness Pilates	Monday 9:30 - 10:30am	07850 473428 (Dianne)
Friday Club ( Supervised play 5—12 year olds )	Friday 6.00pm - 7.30pm	07715557645 after 3.30pm Pam
Hearing Aid Maintenance	1st Wednesday 10.00 - 12.30	01752 228657 Karen Squire
Ladies Netball	Friday 09:15 - 10:15am	07985 387472
Pensioners Lunches	Tuesday 12:00 - 2:00pm	01579 363096
Short Mat Bowls	Thursday 7:00pm	
Tai Chi	Tuesday 7:00 - 8:00pm	07949763256 (Bob)
Village History Group	Last Wednesday Monthly 7:30pm	01579 208754 (Angus)
Wildlife Group	1st Thursday Monthly	01579 362539 ( Hilary)
Woman's Institute	2nd Wed Monthly 7:15pm	01579 363718 (Frances Tucker)
Yoga	Wednesday 7:00pm	01579344464
Zumba Fitness Classes	Wednesday 7:30 - 8:30pm	07850 646207 (Sarah)
<b>PENSILVA VILLAGE HALL</b>		
Beavers	Thursday 5:30pm	01579 363457 Simon Thorpe
Breathers Group	Monday 1.00pm - 3.00pm	01579 345989 Pauline
Brownies	Monday 4:00 - 6:00pm	01579 362239 Martha Oliver
Cubs	Thursday 6:30pm	01579 363457 Simon Thorpe
Girl Guides	Friday 6:00 - 8:00pm	01579 363212 Jackie Browning
Pensilva Wednesday Club	Wednesday 2:30pm	01579 362407 Miss J Mills
Rainbows	Friday 4:00 - 5:00pm	01579 362091 Lynne Bond
Rangers	For Info	01579 362982 Kirsty Oliver
Pensilva Snooker Club	Wed 7:00pm + Various times	01579 362091 Phillip Bond
Tiny Tots	Thursday 9:15 - 11:15am	01579 363376 Cathy
<b>PENSILVA SCHOOL</b>		
Pensilva Pre-School	Monday-Fridays 9-12.00 noon	07890 023 924 Penny Drake
58		



## What's on in St Ive Parish ?

### ST IVE INSTITUTE

Art Classes	Wednesday Afternoons	01579 344831 Yvette Wiltshire
Art & Craft Group	Tuesday 1:00 - 5:00pm	01579 362216 (Jackie)
Coffee Morning	Wednesday 10:30 - 12:00	
Gardening Club	1st Monday monthly 7:30pm	01579 382762
Post Office	Wednesday 10:30 - 11:30	
St Ive Snooker Club	Monday & Thursday 7:00pm	01579 382315 R Bunkum

**St Ive Institute available for hire. £3 per hour. This includes the use of the kitchen & electric (excluding wall heaters which operate on a £1 coin meter)  
Contact Jill Ede 01579 384095**

## ST IVE & DISTRICT GARDENING ASSOCIATION

**Tuesday 9th April.** A visit to Porthpean House Gardens,  
At Austell. Assemble St Ive car park to leave at 6.30pm



Meetings are held in St Ive Village Hall  
1st Monday in the month at 7.30pm  
Visitors and new members are always welcome to join us.

### ART AND CRAFT GROUP

We are a small friendly informal group who enjoy doing art and craft.  
If you paint or do any type of craftwork and would like to join us we would love to welcome you.

There is no 'teaching' but help/advice is always forthcoming!  
We meet at St. Ive Institute Hall from 1.00pm to 5.00pm Tuesday afternoons.  
Only £3.00 for the afternoon plus 50p for tea/coffee and biccies.

If you are interested please give Jackie a call on 01579 362216.  
We look forward to meeting you.

# Millennium House



## CAFE

### Hot & Cold Lunches Snacks & Drinks

All day Breakfast

Jacket Potatoes

Bacon Rolls

Chocolate

Hot & Cold drinks

And much more

Salads

Quiche

Chips

Cakes

### Opening Hours

Mon, Wed & Fri 9.00am - 2pm

Tues & Thurs 12.30 - 5.30pm

**PLEASE NOTE  
NEW OPENING TIMES**

Millennium House 01579 363096



# Millennium House

## THE MEL

### Licensed Bar Free House

### Opening Hours

Mon - Thu - 5 pm to 11 pm

Friday - 4 pm to 11 pm

Saturday - 12 noon to 11 pm

Sunday - 12 noon to 11 pm

Millennium House 01579 363096

